



Full wwPDB X-ray Structure Validation Report ⓘ

Nov 12, 2024 – 08:58 AM EST

PDB ID : 3C30
Title : Crystal structure of the Vibrio Cholerae LuxQ periplasmic domain (SeMet)
Authors : Slama, B.; Hendrickson, W.
Deposited on : 2008-01-27
Resolution : 2.80 Å(reported)

This is a Full wwPDB X-ray Structure Validation Report for a publicly released PDB entry.

We welcome your comments at validation@mail.wwpdb.org

A user guide is available at

<https://www.wwpdb.org/validation/2017/XrayValidationReportHelp>

with specific help available everywhere you see the ⓘ symbol.

The types of validation reports are described at

<http://www.wwpdb.org/validation/2017/FAQs#types>.

The following versions of software and data (see [references ⓘ](#)) were used in the production of this report:

MolProbity : 4.02b-467
Mogul : 2022.3.0, CSD as543be (2022)
Xtriage (Phenix) : 1.20.1
EDS : 3.0
Percentile statistics : 20231227.v01 (using entries in the PDB archive December 27th 2023)
CCP4 : 9.0.003 (Gargrove)
Density-Fitness : 1.0.11
Ideal geometry (proteins) : Engh & Huber (2001)
Ideal geometry (DNA, RNA) : Parkinson et al. (1996)
Validation Pipeline (wwPDB-VP) : 2.39

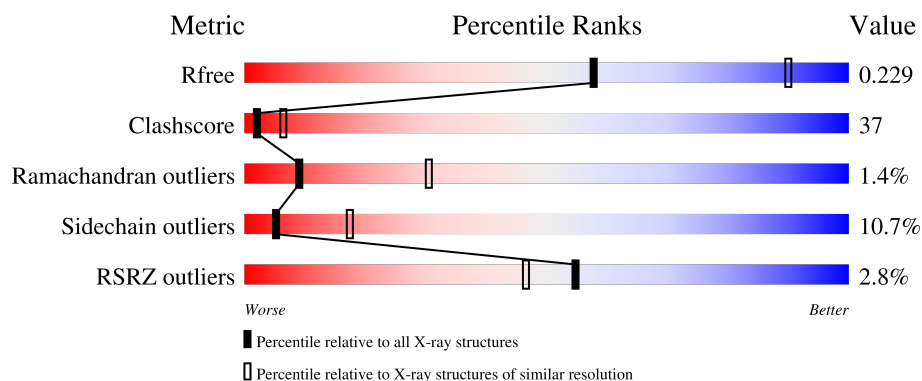
1 Overall quality at a glance

The following experimental techniques were used to determine the structure:

X-RAY DIFFRACTION

The reported resolution of this entry is 2.80 Å.

Percentile scores (ranging between 0-100) for global validation metrics of the entry are shown in the following graphic. The table shows the number of entries on which the scores are based.



Metric	Whole archive (#Entries)	Similar resolution (#Entries, resolution range(Å))
R_{free}	164625	3657 (2.80-2.80)
Clashscore	180529	4123 (2.80-2.80)
Ramachandran outliers	177936	4071 (2.80-2.80)
Sidechain outliers	177891	4073 (2.80-2.80)
RSRZ outliers	164620	3659 (2.80-2.80)

The table below summarises the geometric issues observed across the polymeric chains and their fit to the electron density. The red, orange, yellow and green segments of the lower bar indicate the fraction of residues that contain outliers for ≥ 3 , 2, 1 and 0 types of geometric quality criteria respectively. A grey segment represents the fraction of residues that are not modelled. The numeric value for each fraction is indicated below the corresponding segment, with a dot representing fractions $\leq 5\%$. The upper red bar (where present) indicates the fraction of residues that have poor fit to the electron density. The numeric value is given above the bar.

Mol	Chain	Length	Quality of chain
1	A	270	

2 Entry composition

There are 3 unique types of molecules in this entry. The entry contains 1844 atoms, of which 0 are hydrogens and 0 are deuteriums.

In the tables below, the ZeroOcc column contains the number of atoms modelled with zero occupancy, the AltConf column contains the number of residues with at least one atom in alternate conformation and the Trace column contains the number of residues modelled with at most 2 atoms.

- Molecule 1 is a protein called Autoinducer 2 sensor kinase/phosphatase luxQ.

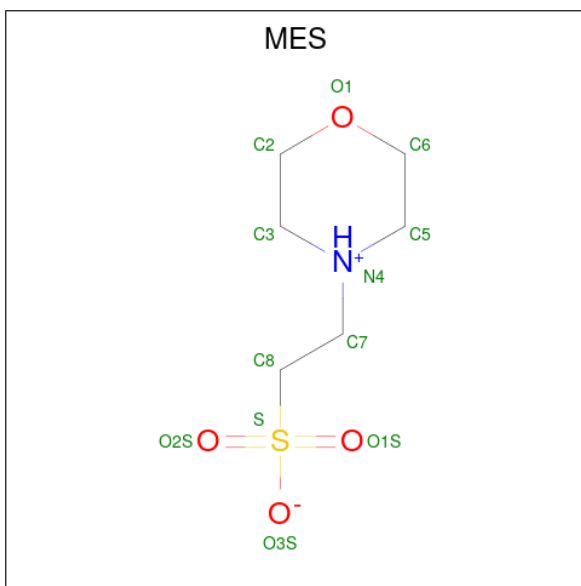
Mol	Chain	Residues	Atoms						ZeroOcc	AltConf	Trace
			Total	C	N	O	S	Se			
1	A	219	1740	1093	300	345	1	1	0	3	0

There are 25 discrepancies between the modelled and reference sequences:

Chain	Residue	Modelled	Actual	Comment	Reference
A	32	GLY	-	expression tag	UNP Q9KLLK7
A	33	SER	-	expression tag	UNP Q9KLLK7
A	34	HIS	-	expression tag	UNP Q9KLLK7
A	35	MSE	-	expression tag	UNP Q9KLLK7
A	281	GLU	-	expression tag	UNP Q9KLLK7
A	282	SER	-	expression tag	UNP Q9KLLK7
A	283	VAL	-	expression tag	UNP Q9KLLK7
A	284	PRO	-	expression tag	UNP Q9KLLK7
A	285	THR	-	expression tag	UNP Q9KLLK7
A	286	TYR	-	expression tag	UNP Q9KLLK7
A	287	LEU	-	expression tag	UNP Q9KLLK7
A	288	CYS	-	expression tag	UNP Q9KLLK7
A	289	VAL	-	expression tag	UNP Q9KLLK7
A	290	TYR	-	expression tag	UNP Q9KLLK7
A	291	SER	-	expression tag	UNP Q9KLLK7
A	292	ILE	-	expression tag	UNP Q9KLLK7
A	293	GLN	-	expression tag	UNP Q9KLLK7
A	294	THR	-	expression tag	UNP Q9KLLK7
A	295	ASN	-	expression tag	UNP Q9KLLK7
A	296	GLN	-	expression tag	UNP Q9KLLK7
A	297	ASN	-	expression tag	UNP Q9KLLK7
A	298	VAL	-	expression tag	UNP Q9KLLK7
A	299	ARG	-	expression tag	UNP Q9KLLK7
A	300	HIS	-	expression tag	UNP Q9KLLK7
A	301	GLN	-	expression tag	UNP Q9KLLK7

- Molecule 2 is 2-(N-MORPHOLINO)-ETHANESULFONIC ACID (three-letter code: MES)

(formula: C₆H₁₃NO₄S).



Mol	Chain	Residues	Atoms					ZeroOcc	AltConf
2	A	1	Total	C	N	O	S	0	0
			12	6	1	4	1		

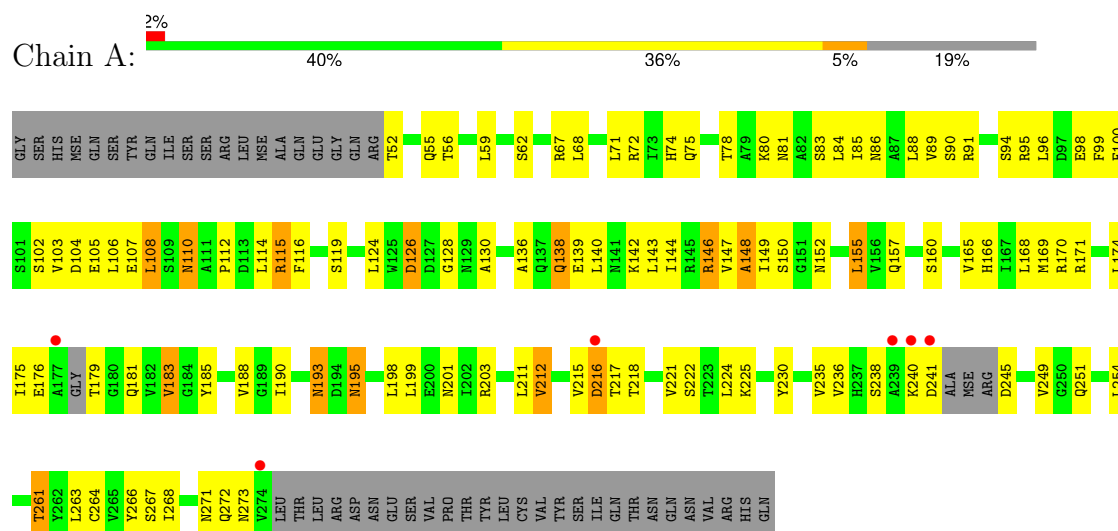
- Molecule 3 is water.

Mol	Chain	Residues	Atoms		ZeroOcc	AltConf
3	A	92	Total	O	0	0
			92	92		

3 Residue-property plots [i](#)

These plots are drawn for all protein, RNA, DNA and oligosaccharide chains in the entry. The first graphic for a chain summarises the proportions of the various outlier classes displayed in the second graphic. The second graphic shows the sequence view annotated by issues in geometry and electron density. Residues are color-coded according to the number of geometric quality criteria for which they contain at least one outlier: green = 0, yellow = 1, orange = 2 and red = 3 or more. A red dot above a residue indicates a poor fit to the electron density ($RSRZ > 2$). Stretches of 2 or more consecutive residues without any outlier are shown as a green connector. Residues present in the sample, but not in the model, are shown in grey.

- Molecule 1: Autoinducer 2 sensor kinase/phosphatase luxQ



4 Data and refinement statistics

Property	Value	Source
Space group	P 41 21 2	Depositor
Cell constants a, b, c, α , β , γ	55.58Å 55.58Å 160.96Å 90.00° 90.00° 90.00°	Depositor
Resolution (Å)	27.86 – 2.80 27.86 – 2.80	Depositor EDS
% Data completeness (in resolution range)	99.8 (27.86-2.80) 99.7 (27.86-2.80)	Depositor EDS
R_{merge}	(Not available)	Depositor
R_{sym}	6.70	Depositor
$\langle I/\sigma(I) \rangle$ ¹	8.40 (at 2.80Å)	Xtriage
Refinement program	CNS 1.1	Depositor
R, R_{free}	0.201 , 0.228 0.195 , 0.229	Depositor DCC
R_{free} test set	319 reflections (4.75%)	wwPDB-VP
Wilson B-factor (Å ²)	44.1	Xtriage
Anisotropy	0.127	Xtriage
Bulk solvent k_{sol} (e/Å ³), B_{sol} (Å ²)	0.33 , 54.9	EDS
L-test for twinning ²	$\langle L \rangle = 0.48$, $\langle L^2 \rangle = 0.32$	Xtriage
Estimated twinning fraction	No twinning to report.	Xtriage
F_o, F_c correlation	0.93	EDS
Total number of atoms	1844	wwPDB-VP
Average B, all atoms (Å ²)	45.0	wwPDB-VP

Xtriage's analysis on translational NCS is as follows: *The largest off-origin peak in the Patterson function is 8.54% of the height of the origin peak. No significant pseudotranslation is detected.*

¹Intensities estimated from amplitudes.

²Theoretical values of $\langle |L| \rangle$, $\langle L^2 \rangle$ for acentric reflections are 0.5, 0.333 respectively for untwinned datasets, and 0.375, 0.2 for perfectly twinned datasets.

5 Model quality

5.1 Standard geometry

Bond lengths and bond angles in the following residue types are not validated in this section: MES

The Z score for a bond length (or angle) is the number of standard deviations the observed value is removed from the expected value. A bond length (or angle) with $|Z| > 5$ is considered an outlier worth inspection. RMSZ is the root-mean-square of all Z scores of the bond lengths (or angles).

Mol	Chain	Bond lengths		Bond angles	
		RMSZ	$\# Z > 5$	RMSZ	$\# Z > 5$
1	A	0.37	0/1767	0.65	0/2398

There are no bond length outliers.

There are no bond angle outliers.

There are no chirality outliers.

There are no planarity outliers.

5.2 Too-close contacts

In the following table, the Non-H and H(model) columns list the number of non-hydrogen atoms and hydrogen atoms in the chain respectively. The H(added) column lists the number of hydrogen atoms added and optimized by MolProbity. The Clashes column lists the number of clashes within the asymmetric unit, whereas Symm-Clashes lists symmetry-related clashes.

Mol	Chain	Non-H	H(model)	H(added)	Clashes	Symm-Clashes
1	A	1740	0	1705	128	0
2	A	12	0	13	5	0
3	A	92	0	0	32	0
All	All	1844	0	1718	128	0

The all-atom clashscore is defined as the number of clashes found per 1000 atoms (including hydrogen atoms). The all-atom clashscore for this structure is 37.

All (128) close contacts within the same asymmetric unit are listed below, sorted by their clash magnitude.

Atom-1	Atom-2	Interatomic distance (Å)	Clash overlap (Å)
1:A:261:THR:HG23	1:A:263:LEU:H	1.19	1.01

Continued on next page...

Continued from previous page...

Atom-1	Atom-2	Interatomic distance (Å)	Clash overlap (Å)
1:A:124:LEU:HG	3:A:327:HOH:O	1.64	0.96
1:A:102:SER:O	1:A:105:GLU:HG2	1.65	0.94
1:A:193:ASN:H	1:A:193:ASN:HD22	1.16	0.92
1:A:149:ILE:HD13	3:A:358:HOH:O	1.76	0.85
1:A:181:GLN:HG2	3:A:371:HOH:O	1.77	0.83
1:A:148:ALA:C	1:A:149:ILE:HD12	1.99	0.83
1:A:75:GLN:NE2	1:A:170:ARG:HH11	1.75	0.83
1:A:67[B]:ARG:NH1	1:A:110:ASN:HD21	1.77	0.82
1:A:212:VAL:HG13	1:A:266:TYR:HB2	1.62	0.81
1:A:216:ASP:HA	3:A:310:HOH:O	1.81	0.80
1:A:147:VAL:HG12	3:A:393:HOH:O	1.80	0.80
1:A:166:HIS:H	1:A:193:ASN:HD21	1.30	0.79
1:A:193:ASN:HD22	1:A:193:ASN:N	1.81	0.78
1:A:71:LEU:HD12	1:A:190:ILE:HD11	1.65	0.78
1:A:199:LEU:HD22	1:A:221:VAL:HG13	1.66	0.76
1:A:146:ARG:NH2	1:A:157[A]:GLN:H	1.84	0.75
1:A:146:ARG:NH2	1:A:157[B]:GLN:H	1.83	0.75
1:A:176:GLU:HB3	3:A:371:HOH:O	1.88	0.74
1:A:171:ARG:HG2	3:A:393:HOH:O	1.88	0.72
1:A:138:GLN:HE22	1:A:142:LYS:HG3	1.52	0.71
1:A:138:GLN:CD	1:A:138:GLN:C	2.49	0.71
1:A:240:LYS:O	1:A:249:VAL:O	2.09	0.71
1:A:67[B]:ARG:NH1	1:A:110:ASN:ND2	2.38	0.71
1:A:107:GLU:HB3	3:A:357:HOH:O	1.89	0.70
1:A:222:SER:HB3	2:A:302:MES:H61	1.71	0.70
1:A:203:ARG:HB2	3:A:343:HOH:O	1.93	0.69
1:A:211:LEU:HB2	3:A:343:HOH:O	1.93	0.68
1:A:249:VAL:HG13	3:A:338:HOH:O	1.93	0.67
1:A:195:ASN:ND2	1:A:198:LEU:H	1.93	0.65
1:A:148:ALA:O	1:A:149:ILE:HD12	1.96	0.65
1:A:142:LYS:HG3	3:A:359:HOH:O	1.97	0.65
1:A:149:ILE:O	1:A:149:ILE:HG22	1.96	0.65
1:A:261:THR:HG23	1:A:263:LEU:N	2.03	0.64
1:A:119:SER:N	3:A:327:HOH:O	2.26	0.64
1:A:193:ASN:H	1:A:193:ASN:ND2	1.93	0.63
1:A:240:LYS:HG2	1:A:241:ASP:OD2	1.99	0.62
1:A:78:THR:HG22	1:A:84:LEU:HD22	1.83	0.60
1:A:195:ASN:HD22	1:A:195:ASN:C	2.04	0.60
1:A:67[B]:ARG:HH12	1:A:110:ASN:HD21	1.46	0.60
1:A:94:SER:O	1:A:98:GLU:HG2	2.02	0.59
1:A:108:LEU:C	1:A:110:ASN:H	2.05	0.59

Continued on next page...

Continued from previous page...

Atom-1	Atom-2	Interatomic distance (Å)	Clash overlap (Å)
1:A:254:LEU:O	1:A:261:THR:HG22	2.02	0.58
1:A:193:ASN:N	1:A:193:ASN:ND2	2.52	0.58
1:A:221:VAL:HA	2:A:302:MES:H62	1.85	0.58
1:A:112:PRO:HB3	1:A:188:VAL:HG13	1.86	0.58
1:A:211:LEU:HD23	1:A:267:SER:HA	1.87	0.57
1:A:179:THR:HB	3:A:371:HOH:O	2.05	0.56
1:A:104:ASP:OD1	1:A:115:ARG:NH2	2.38	0.56
1:A:147:VAL:HG12	1:A:147:VAL:O	2.04	0.56
1:A:116:PHE:HE2	1:A:169:MSE:HE1	1.71	0.55
1:A:215:VAL:HG12	1:A:215:VAL:O	2.06	0.55
1:A:224:LEU:O	2:A:302:MES:H82	2.07	0.55
1:A:114:LEU:HD21	1:A:130:ALA:HA	1.90	0.54
1:A:81:ASN:HD22	1:A:83:SER:HB2	1.73	0.54
1:A:99:PHE:O	1:A:103:VAL:HG23	2.08	0.53
1:A:272:GLN:O	1:A:273:ASN:C	2.46	0.53
1:A:199:LEU:HG	3:A:343:HOH:O	2.09	0.53
1:A:251:GLN:HG3	1:A:264:CYS:SG	2.49	0.53
1:A:80:LYS:HE3	3:A:348:HOH:O	2.09	0.52
1:A:71:LEU:HD21	3:A:340:HOH:O	2.10	0.52
1:A:166:HIS:H	1:A:193:ASN:ND2	2.05	0.52
1:A:203:ARG:HH11	1:A:203:ARG:HG2	1.74	0.52
1:A:74[B]:HIS:CE1	3:A:361:HOH:O	2.62	0.52
1:A:106:LEU:N	3:A:370:HOH:O	2.31	0.51
1:A:72:ARG:HG3	1:A:170:ARG:CZ	2.41	0.51
1:A:52:THR:HG22	1:A:55:GLN:OE1	2.12	0.49
1:A:68:LEU:HD11	1:A:168:LEU:HD13	1.94	0.49
1:A:155:LEU:HD12	1:A:261:THR:OG1	2.13	0.49
1:A:71:LEU:CD1	1:A:190:ILE:HD11	2.40	0.49
1:A:67[B]:ARG:HH11	1:A:110:ASN:ND2	2.09	0.49
1:A:138:GLN:OE1	1:A:139:GLU:HA	2.12	0.49
1:A:107:GLU:HB2	3:A:376:HOH:O	2.13	0.49
1:A:174:LEU:O	1:A:183:VAL:HG12	2.13	0.49
1:A:102:SER:HA	1:A:105:GLU:OE1	2.14	0.48
1:A:138:GLN:CD	1:A:138:GLN:O	2.52	0.48
1:A:138:GLN:O	1:A:138:GLN:NE2	2.47	0.47
1:A:216:ASP:C	1:A:218:THR:H	2.17	0.47
1:A:67[A]:ARG:NH2	3:A:340:HOH:O	2.47	0.47
1:A:138:GLN:O	3:A:359:HOH:O	2.20	0.47
1:A:139:GLU:C	3:A:359:HOH:O	2.52	0.46
1:A:136:ALA:C	1:A:138:GLN:N	2.68	0.46
1:A:140:LEU:O	1:A:144:ILE:HG13	2.15	0.46

Continued on next page...

Continued from previous page...

Atom-1	Atom-2	Interatomic distance (Å)	Clash overlap (Å)
1:A:75:GLN:NE2	1:A:170:ARG:NH1	2.55	0.46
1:A:225:LYS:HE3	3:A:352:HOH:O	2.15	0.46
1:A:230:TYR:CE1	1:A:268:ILE:HD13	2.51	0.46
1:A:139:GLU:O	1:A:143:LEU:HG	2.15	0.46
1:A:254:LEU:O	1:A:261:THR:CG2	2.63	0.46
1:A:147:VAL:O	1:A:149:ILE:N	2.47	0.45
1:A:216:ASP:O	1:A:217:THR:HB	2.15	0.45
1:A:81:ASN:O	1:A:84:LEU:N	2.46	0.45
1:A:119:SER:CB	3:A:327:HOH:O	2.63	0.45
1:A:85:ILE:O	1:A:89:VAL:HG23	2.15	0.45
1:A:138:GLN:OE1	1:A:139:GLU:N	2.50	0.45
1:A:67[B]:ARG:HH11	1:A:110:ASN:HD21	1.62	0.45
1:A:106:LEU:HB2	3:A:370:HOH:O	2.16	0.45
1:A:225:LYS:HG3	3:A:392:HOH:O	2.16	0.45
1:A:160:SER:HB3	1:A:165:VAL:HG23	1.99	0.45
1:A:95:ARG:NH2	3:A:312:HOH:O	2.37	0.45
1:A:72:ARG:HD3	3:A:345:HOH:O	2.16	0.45
1:A:235:VAL:HG11	1:A:268:ILE:HD11	1.99	0.44
1:A:139:GLU:HA	3:A:359:HOH:O	2.16	0.44
1:A:211:LEU:HD12	3:A:343:HOH:O	2.17	0.44
1:A:175:ILE:HG22	1:A:176:GLU:N	2.33	0.44
1:A:96:LEU:O	1:A:100:PHE:HD1	2.01	0.44
1:A:171:ARG:HD2	1:A:185:TYR:CD1	2.52	0.44
1:A:139:GLU:HG3	3:A:326:HOH:O	2.17	0.44
1:A:136:ALA:O	1:A:139:GLU:N	2.51	0.44
1:A:106:LEU:HD23	1:A:106:LEU:HA	1.76	0.43
1:A:75:GLN:HE22	1:A:170:ARG:HH11	1.61	0.43
1:A:203:ARG:HG2	1:A:203:ARG:NH1	2.34	0.43
1:A:238:SER:OG	1:A:249:VAL:HG11	2.19	0.43
1:A:86:ASN:O	1:A:90:SER:HB2	2.19	0.42
1:A:88:LEU:HD23	1:A:183:VAL:HG13	2.02	0.42
1:A:136:ALA:O	1:A:138:GLN:N	2.52	0.42
1:A:85:ILE:HD12	1:A:175:ILE:O	2.20	0.42
1:A:108:LEU:C	1:A:110:ASN:N	2.73	0.42
1:A:138:GLN:C	1:A:138:GLN:OE1	2.57	0.41
1:A:146:ARG:HH22	1:A:157[A]:GLN:H	1.65	0.41
1:A:222:SER:H	2:A:302:MES:C6	2.33	0.41
1:A:126:ASP:CG	1:A:128:GLY:H	2.23	0.41
1:A:146:ARG:HH22	1:A:157[B]:GLN:H	1.66	0.41
1:A:211:LEU:HA	1:A:266:TYR:O	2.21	0.41
1:A:108:LEU:H	1:A:108:LEU:HG	1.59	0.41

Continued on next page...

Continued from previous page...

Atom-1	Atom-2	Interatomic distance (Å)	Clash overlap (Å)
1:A:222:SER:H	2:A:302:MES:H52	1.85	0.41
1:A:75:GLN:HE22	1:A:170:ARG:HG2	1.86	0.40
1:A:99:PHE:CE2	1:A:103:VAL:HG21	2.56	0.40
1:A:146:ARG:NH2	1:A:157[B]:GLN:OE1	2.44	0.40

There are no symmetry-related clashes.

5.3 Torsion angles [i](#)

5.3.1 Protein backbone [i](#)

In the following table, the Percentiles column shows the percent Ramachandran outliers of the chain as a percentile score with respect to all X-ray entries followed by that with respect to entries of similar resolution.

The Analysed column shows the number of residues for which the backbone conformation was analysed, and the total number of residues.

Mol	Chain	Analysed	Favoured	Allowed	Outliers	Percentiles	
1	A	216/270 (80%)	194 (90%)	19 (9%)	3 (1%)	9	30

All (3) Ramachandran outliers are listed below:

Mol	Chain	Res	Type
1	A	148	ALA
1	A	150	SER
1	A	216	ASP

5.3.2 Protein sidechains [i](#)

In the following table, the Percentiles column shows the percent sidechain outliers of the chain as a percentile score with respect to all X-ray entries followed by that with respect to entries of similar resolution.

The Analysed column shows the number of residues for which the sidechain conformation was analysed, and the total number of residues.

Mol	Chain	Analysed	Rotameric	Outliers	Percentiles	
1	A	199/238 (84%)	178 (89%)	21 (11%)	5	18

All (21) residues with a non-rotameric sidechain are listed below:

Mol	Chain	Res	Type
1	A	56	THR
1	A	59	LEU
1	A	62	SER
1	A	91	ARG
1	A	108	LEU
1	A	110	ASN
1	A	115	ARG
1	A	126	ASP
1	A	138	GLN
1	A	146	ARG
1	A	152	ASN
1	A	155	LEU
1	A	183	VAL
1	A	193	ASN
1	A	195	ASN
1	A	201	ASN
1	A	212	VAL
1	A	236	VAL
1	A	245	ASP
1	A	261	THR
1	A	271	ASN

Sometimes sidechains can be flipped to improve hydrogen bonding and reduce clashes. All (9) such sidechains are listed below:

Mol	Chain	Res	Type
1	A	75	GLN
1	A	81	ASN
1	A	110	ASN
1	A	129	ASN
1	A	152	ASN
1	A	193	ASN
1	A	195	ASN
1	A	271	ASN
1	A	273	ASN

5.3.3 RNA ⓘ

There are no RNA molecules in this entry.

5.4 Non-standard residues in protein, DNA, RNA chains [i](#)

There are no non-standard protein/DNA/RNA residues in this entry.

5.5 Carbohydrates [i](#)

There are no oligosaccharides in this entry.

5.6 Ligand geometry [i](#)

1 ligand is modelled in this entry.

In the following table, the Counts columns list the number of bonds (or angles) for which Mogul statistics could be retrieved, the number of bonds (or angles) that are observed in the model and the number of bonds (or angles) that are defined in the Chemical Component Dictionary. The Link column lists molecule types, if any, to which the group is linked. The Z score for a bond length (or angle) is the number of standard deviations the observed value is removed from the expected value. A bond length (or angle) with $|Z| > 2$ is considered an outlier worth inspection. RMSZ is the root-mean-square of all Z scores of the bond lengths (or angles).

Mol	Type	Chain	Res	Link	Bond lengths			Bond angles		
					Counts	RMSZ	# $ Z > 2$	Counts	RMSZ	# $ Z > 2$
2	MES	A	302	-	12,12,12	0.98	1 (8%)	15,16,16	1.15	0

In the following table, the Chirals column lists the number of chiral outliers, the number of chiral centers analysed, the number of these observed in the model and the number defined in the Chemical Component Dictionary. Similar counts are reported in the Torsion and Rings columns. '-' means no outliers of that kind were identified.

Mol	Type	Chain	Res	Link	Chirals	Torsions	Rings
2	MES	A	302	-	-	0/6/14/14	0/1/1/1

All (1) bond length outliers are listed below:

Mol	Chain	Res	Type	Atoms	Z	Observed(Å)	Ideal(Å)
2	A	302	MES	C8-S	2.72	1.81	1.77

There are no bond angle outliers.

There are no chirality outliers.

There are no torsion outliers.

There are no ring outliers.

1 monomer is involved in 5 short contacts:

Mol	Chain	Res	Type	Clashes	Symm-Clashes
2	A	302	MES	5	0

5.7 Other polymers [i](#)

There are no such residues in this entry.

5.8 Polymer linkage issues [i](#)

There are no chain breaks in this entry.

6 Fit of model and data [i](#)

6.1 Protein, DNA and RNA chains [i](#)

In the following table, the column labelled ‘#RSRZ> 2’ contains the number (and percentage) of RSRZ outliers, followed by percent RSRZ outliers for the chain as percentile scores relative to all X-ray entries and entries of similar resolution. The OWAB column contains the minimum, median, 95th percentile and maximum values of the occupancy-weighted average B-factor per residue. The column labelled ‘Q< 0.9’ lists the number of (and percentage) of residues with an average occupancy less than 0.9.

Mol	Chain	Analysed	<RSRZ>	#RSRZ>2	OWAB(Å ²)	Q<0.9
1	A	218/270 (80%)	-0.08	6 (2%) 55 46	14, 40, 83, 100	3 (1%)

All (6) RSRZ outliers are listed below:

Mol	Chain	Res	Type	RSRZ
1	A	177	ALA	3.5
1	A	239	ALA	3.2
1	A	241	ASP	2.9
1	A	274	VAL	2.5
1	A	240	LYS	2.3
1	A	216	ASP	2.3

6.2 Non-standard residues in protein, DNA, RNA chains [i](#)

There are no non-standard protein/DNA/RNA residues in this entry.

6.3 Carbohydrates [i](#)

There are no monosaccharides in this entry.

6.4 Ligands [i](#)

In the following table, the Atoms column lists the number of modelled atoms in the group and the number defined in the chemical component dictionary. The B-factors column lists the minimum, median, 95th percentile and maximum values of B factors of atoms in the group. The column labelled ‘Q< 0.9’ lists the number of atoms with occupancy less than 0.9.

Mol	Type	Chain	Res	Atoms	RSCC	RSR	B-factors(Å ²)	Q<0.9
2	MES	A	302	12/12	0.75	0.28	118,119,128,128	0

6.5 Other polymers [i](#)

There are no such residues in this entry.