



Full wwPDB X-ray Structure Validation Report ⓘ

May 14, 2026 – 02:59 PM EDT

PDB ID : 7IPF / pdb_00007ipf
Title : Crystal structure of A2A in complex with FU428-16
Authors : Huang, C.-Y.; Cheng, R.Y.K.; Metz, A.
Deposited on : 2025-08-21
Resolution : 1.90 Å(reported)

This is a Full wwPDB X-ray Structure Validation Report for a publicly released PDB entry.

We welcome your comments at validation@mail.wwpdb.org

A user guide is available at

<https://www.wwpdb.org/validation/2017/XrayValidationReportHelp>

with specific help available everywhere you see the ⓘ symbol.

The types of validation reports are described at

<http://www.wwpdb.org/validation/2017/FAQs#types>.

The following versions of software and data (see [references ⓘ](#)) were used in the production of this report:

MolProbity : 4-5-2 with Phenix2.0
Mogul : 2022.3.0, CSD as543be (2022)
Xtriage (Phenix) : 2.0
EDS : 3.0
Buster-report : wwPDB partial adaption of 1.1.7 (2018)
Percentile statistics : 20250101.v01 (using entries in the PDB archive January 1st 2025)
CCP4 : 9.0.010 (Gargrove)
Density-Fitness : 1.0.12
Ideal geometry (proteins) : Engh & Huber (2001)
Ideal geometry (DNA, RNA) : Parkinson et al. (1996)
Validation Pipeline (wwPDB-VP) : 2.49

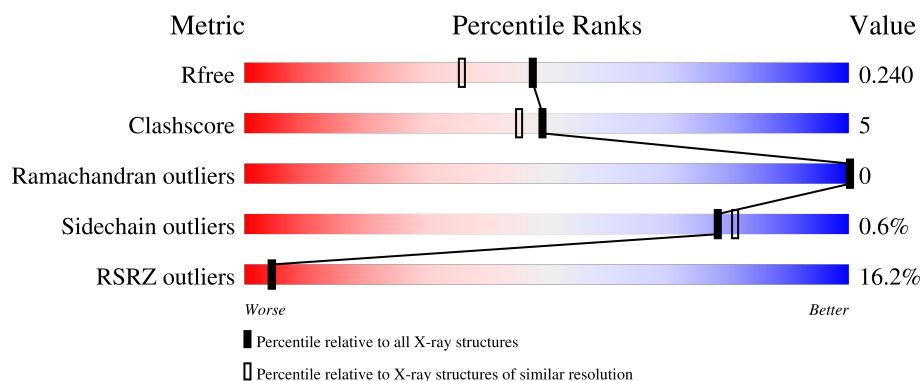
1 Overall quality at a glance

The following experimental techniques were used to determine the structure:

X-RAY DIFFRACTION

The reported resolution of this entry is 1.90 Å.

Percentile scores (ranging between 0-100) for global validation metrics of the entry are shown in the following graphic. The table shows the number of entries on which the scores are based.



Metric	Whole archive (#Entries)	Similar resolution (#Entries, resolution range(Å))
R_{free}	180053	7789 (1.90-1.90)
Clashscore	190562	8410 (1.90-1.90)
Ramachandran outliers	187476	8333 (1.90-1.90)
Sidechain outliers	187428	8333 (1.90-1.90)
RSRZ outliers	180081	7790 (1.90-1.90)

The table below summarises the geometric issues observed across the polymeric chains and their fit to the electron density. The red, orange, yellow and green segments of the lower bar indicate the fraction of residues that contain outliers for ≥ 3 , 2, 1 and 0 types of geometric quality criteria respectively. A grey segment represents the fraction of residues that are not modelled. The numeric value for each fraction is indicated below the corresponding segment, with a dot representing fractions $\leq 5\%$. The upper red bar (where present) indicates the fraction of residues that have poor fit to the electron density. The numeric value is given above the bar.

Mol	Chain	Length	Quality of chain
1	A	433	

The following table lists non-polymeric compounds, carbohydrate monomers and non-standard residues in protein, DNA, RNA chains that are outliers for geometric or electron-density-fit criteria:

Mol	Type	Chain	Res	Chirality	Geometry	Clashes	Electron density
3	TEP	A	2401	-	X	-	-

2 Entry composition

There are 10 unique types of molecules in this entry. The entry contains 3781 atoms, of which 0 are hydrogens and 0 are deuteriums.

In the tables below, the ZeroOcc column contains the number of atoms modelled with zero occupancy, the AltConf column contains the number of residues with at least one atom in alternate conformation and the Trace column contains the number of residues modelled with at most 2 atoms.

- Molecule 1 is a protein called Adenosine receptor A2a/Soluble cytochrome b562/Adenosine receptor A2a chimera.

Mol	Chain	Residues	Atoms					ZeroOcc	AltConf	Trace
1	A	390	Total	C	N	O	S	0	13	0
			3126	2035	532	536	23			

There are 35 discrepancies between the modelled and reference sequences:

Chain	Residue	Modelled	Actual	Comment	Reference
A	-8	ASP	-	expression tag	UNP P29274
A	-7	TYR	-	expression tag	UNP P29274
A	-6	LYS	-	expression tag	UNP P29274
A	-5	ASP	-	expression tag	UNP P29274
A	-4	ASP	-	expression tag	UNP P29274
A	-3	ASP	-	expression tag	UNP P29274
A	-2	ASP	-	expression tag	UNP P29274
A	-1	GLY	-	expression tag	UNP P29274
A	0	ALA	-	expression tag	UNP P29274
A	1	PRO	-	expression tag	UNP P29274
A	54	LEU	ALA	engineered mutation	UNP P29274
A	88	ALA	THR	engineered mutation	UNP P29274
A	107	ALA	ARG	engineered mutation	UNP P29274
A	122	ALA	LYS	engineered mutation	UNP P29274
A	154	ALA	ASN	engineered mutation	UNP P29274
A	202	ALA	LEU	engineered mutation	UNP P29274
A	1007	TRP	MET	conflict	UNP P0ABE7
A	1102	ILE	-	linker	UNP P0ABE7
A	1103	GLN	-	linker	UNP P0ABE7
A	1104	LYS	-	linker	UNP P0ABE7
A	1105	TYR	-	linker	UNP P0ABE7
A	1106	LEU	-	linker	UNP P0ABE7
A	235	ALA	LEU	engineered mutation	UNP P29274
A	239	ALA	VAL	engineered mutation	UNP P29274
A	318	ALA	-	expression tag	UNP P29274
A	319	HIS	-	expression tag	UNP P29274

Continued on next page...

Continued from previous page...

Chain	Residue	Modelled	Actual	Comment	Reference
A	320	HIS	-	expression tag	UNP P29274
A	321	HIS	-	expression tag	UNP P29274
A	322	HIS	-	expression tag	UNP P29274
A	323	HIS	-	expression tag	UNP P29274
A	324	HIS	-	expression tag	UNP P29274
A	325	HIS	-	expression tag	UNP P29274
A	326	HIS	-	expression tag	UNP P29274
A	327	HIS	-	expression tag	UNP P29274
A	328	HIS	-	expression tag	UNP P29274

- Molecule 2 is SODIUM ION (CCD ID: NA) (formula: Na).

Mol	Chain	Residues	Atoms	ZeroOcc	AltConf
2	A	1	Total Na 1 1	0	0

- Molecule 3 is THEOPHYLLINE (CCD ID: TEP) (formula: C₇H₈N₄O₂) (labeled as "Ligand of Interest" by depositor).



Mol	Chain	Residues	Atoms	ZeroOcc	AltConf
3	A	1	Total C N O 13 7 4 2	0	0

- Molecule 4 is CHOLESTEROL (CCD ID: CLR) (formula: C₂₇H₄₆O).



Mol	Chain	Residues	Atoms			ZeroOcc	AltConf
4	A	1	Total	C	O	0	0
			28	27	1		
4	A	1	Total	C	O	0	0
			28	27	1		
4	A	1	Total	C	O	0	0
			28	27	1		

- Molecule 5 is OLEIC ACID (CCD ID: OLA) (formula: C₁₈H₃₄O₂).



Mol	Chain	Residues	Atoms			ZeroOcc	AltConf
5	A	1	Total	C	O	0	0
			20	18	2		

Continued on next page...

Continued from previous page...

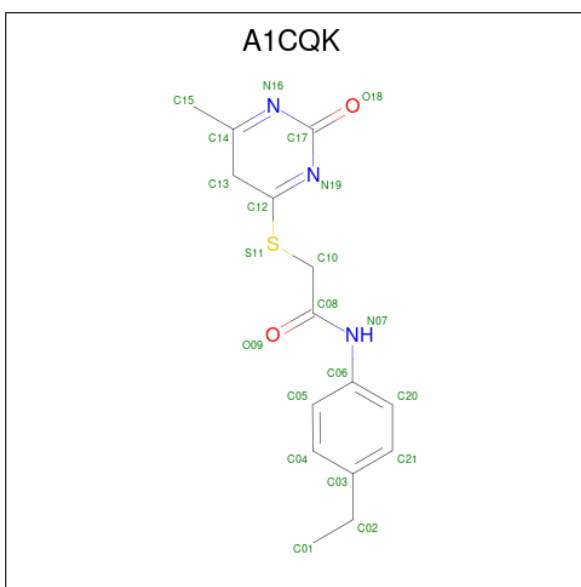
Mol	Chain	Residues	Atoms	ZeroOcc	AltConf
5	A	1	Total C O 10 8 2	0	0
5	A	1	Total C O 9 7 2	0	0
5	A	1	Total C O 18 16 2	0	0
5	A	1	Total C O 20 18 2	0	0
5	A	1	Total C O 20 18 2	0	0
5	A	1	Total C O 12 10 2	0	0
5	A	1	Total C O 8 6 2	0	0
5	A	1	Total C O 15 13 2	0	0
5	A	1	Total C O 11 9 2	0	0
5	A	1	Total C O 19 17 2	0	0
5	A	1	Total C O 20 18 2	0	0
5	A	1	Total C 12 12	0	0
5	A	1	Total C 10 10	0	0
5	A	1	Total C 11 11	0	0
5	A	1	Total C 12 12	0	0
5	A	1	Total C 9 9	0	0
5	A	1	Total C 8 8	0	0
5	A	1	Total C O 15 13 2	0	0
5	A	1	Total C 15 15	0	0
5	A	1	Total C O 13 11 2	0	0
5	A	1	Total C O 20 18 2	0	0

- Molecule 6 is (2R)-2,3-dihydroxypropyl (9Z)-octadec-9-enoate (CCD ID: OLC) (formula: $C_{21}H_{40}O_4$).



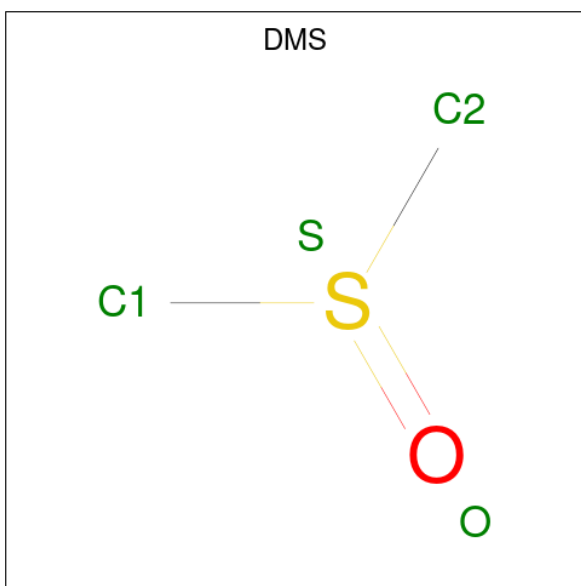
Mol	Chain	Residues	Atoms			ZeroOcc	AltConf
6	A	1	Total	C	O	0	0
			16	12	4		
6	A	1	Total	C	O	0	0
			17	13	4		
6	A	1	Total	C	O	0	0
			23	19	4		
6	A	1	Total	C	O	0	0
			23	19	4		
6	A	1	Total	C	O	0	0
			23	19	4		
6	A	1	Total	C	O	0	0
			18	14	4		
6	A	1	Total	C	O	0	0
			16	12	4		

- Molecule 7 is N-(4-ethylphenyl)-2-[(6-methyl-2-oxo-2,5-dihydropyrimidin-4-yl)sulfanyl]acetamide (CCD ID: A1CQK) (formula: $C_{15}H_{17}N_3O_2S$) (labeled as "Ligand of Interest" by depositor).



Mol	Chain	Residues	Atoms					ZeroOcc	AltConf
7	A	1	Total	C	N	O	S	0	0
			21	15	3	2	1		

- Molecule 8 is DIMETHYL SULFOXIDE (CCD ID: DMS) (formula: C_2H_6OS).



Mol	Chain	Residues	Atoms				ZeroOcc	AltConf
8	A	1	Total	C	O	S	0	1
			4	2	1	1		

- Molecule 9 is DI(HYDROXYETHYL)ETHER (CCD ID: PEG) (formula: $C_4H_{10}O_3$).



Mol	Chain	Residues	Atoms			ZeroOcc	AltConf
9	A	1	Total	C	O	0	0
			7	4	3		

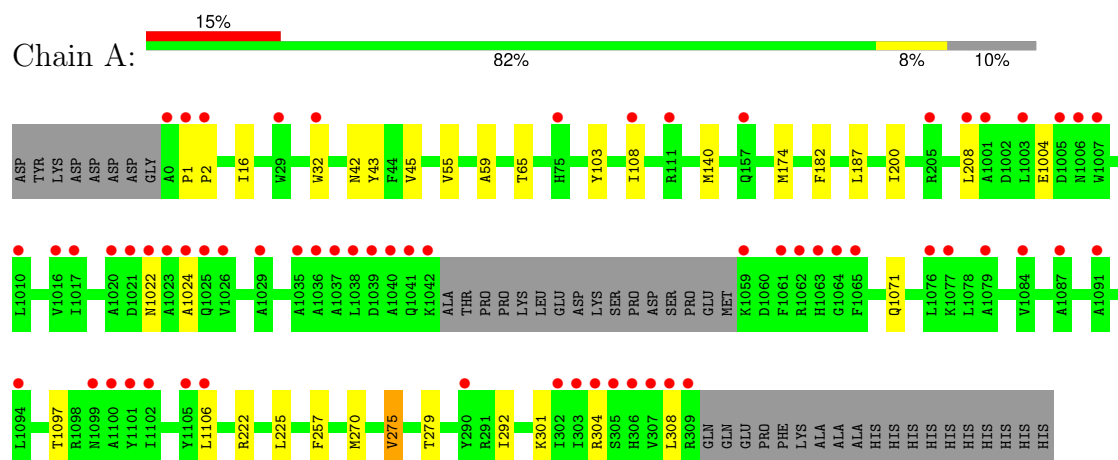
- Molecule 10 is water.

Mol	Chain	Residues	Atoms		ZeroOcc	AltConf
10	A	82	Total	O	0	0
			82	82		

3 Residue-property plots

These plots are drawn for all protein, RNA, DNA and oligosaccharide chains in the entry. The first graphic for a chain summarises the proportions of the various outlier classes displayed in the second graphic. The second graphic shows the sequence view annotated by issues in geometry and electron density. Residues are color-coded according to the number of geometric quality criteria for which they contain at least one outlier: green = 0, yellow = 1, orange = 2 and red = 3 or more. A red dot above a residue indicates a poor fit to the electron density ($RSRZ > 2$). Stretches of 2 or more consecutive residues without any outlier are shown as a green connector. Residues present in the sample, but not in the model, are shown in grey.

- Molecule 1: Adenosine receptor A2a/Soluble cytochrome b562/Adenosine receptor A2a chimera



4 Data and refinement statistics

Property	Value	Source
Space group	C 2 2 21	Depositor
Cell constants a, b, c, α , β , γ	39.32Å 179.52Å 139.73Å 90.00° 90.00° 90.00°	Depositor
Resolution (Å)	89.76 – 1.90 89.76 – 1.90	Depositor EDS
% Data completeness (in resolution range)	77.2 (89.76-1.90) 77.4 (89.76-1.90)	Depositor EDS
R_{merge}	0.16	Depositor
R_{sym}	(Not available)	Depositor
$\langle I/\sigma(I) \rangle$ ¹	1.14 (at 1.90Å)	Xtriage
Refinement program	PHENIX (1.20_4459: ???)	Depositor
R, R_{free}	0.196 , 0.240 0.196 , 0.240	Depositor DCC
R_{free} test set	1552 reflections (3.90%)	wwPDB-VP
Wilson B-factor (Å ²)	29.8	Xtriage
Anisotropy	0.057	Xtriage
Bulk solvent k_{sol} (e/Å ³), B_{sol} (Å ²)	0.34 , 48.9	EDS
L-test for twinning ²	$\langle L \rangle = 0.50$, $\langle L^2 \rangle = 0.33$	Xtriage
Estimated twinning fraction	No twinning to report.	Xtriage
F_o, F_c correlation	0.95	EDS
Total number of atoms	3781	wwPDB-VP
Average B, all atoms (Å ²)	41.0	wwPDB-VP

Xtriage's analysis on translational NCS is as follows: *The largest off-origin peak in the Patterson function is 6.23% of the height of the origin peak. No significant pseudotranslation is detected.*

¹Intensities estimated from amplitudes.

²Theoretical values of $\langle |L| \rangle$, $\langle L^2 \rangle$ for acentric reflections are 0.5, 0.333 respectively for untwinned datasets, and 0.375, 0.2 for perfectly twinned datasets.

5 Model quality

5.1 Standard geometry

Bond lengths and bond angles in the following residue types are not validated in this section: DMS, A1CQK, CLR, OLA, NA, TEP, OLC, PEG

The Z score for a bond length (or angle) is the number of standard deviations the observed value is removed from the expected value. A bond length (or angle) with $|Z| > 5$ is considered an outlier worth inspection. RMSZ is the root-mean-square of all Z scores of the bond lengths (or angles).

Mol	Chain	Bond lengths		Bond angles	
		RMSZ	$\# Z > 5$	RMSZ	$\# Z > 5$
1	A	0.13	0/3191	0.31	0/4338

There are no bond length outliers.

There are no bond angle outliers.

There are no chirality outliers.

There are no planarity outliers.

5.2 Too-close contacts

In the following table, the Non-H and H(model) columns list the number of non-hydrogen atoms and hydrogen atoms in the chain respectively. The H(added) column lists the number of hydrogen atoms added and optimized by MolProbity. The Clashes column lists the number of clashes within the asymmetric unit, whereas Symm-Clashes lists symmetry-related clashes.

Mol	Chain	Non-H	H(model)	H(added)	Clashes	Symm-Clashes
1	A	3126	0	3206	24	0
2	A	1	0	0	0	0
3	A	13	0	8	0	0
4	A	84	0	138	0	0
5	A	307	0	459	18	0
6	A	136	0	186	9	0
7	A	21	0	0	0	0
8	A	4	0	6	1	0
9	A	7	0	10	0	0
10	A	82	0	0	0	0
All	All	3781	0	4013	42	0

The all-atom clashscore is defined as the number of clashes found per 1000 atoms (including hydrogen atoms). The all-atom clashscore for this structure is 5.

All (42) close contacts within the same asymmetric unit are listed below, sorted by their clash magnitude.

Atom-1	Atom-2	Interatomic distance (Å)	Clash overlap (Å)
6:A:2429:OLC:H4A	6:A:2430:OLC:H2	1.74	0.69
5:A:2425:OLA:H62	6:A:2433:OLC:H3A	1.81	0.63
1:A:140[A]:MET:HE2	5:A:2425:OLA:H52	1.84	0.59
1:A:65:THR:HG21	6:A:2430:OLC:H5	1.89	0.55
1:A:42:ASN:HA	1:A:45:VAL:HB	1.88	0.55
1:A:1022:ASN:HD22	1:A:1024:ALA:HB3	1.71	0.55
1:A:292:ILE:HG12	8:A:2435[S]:DMS:H22	1.89	0.54
1:A:275[B]:VAL:O	1:A:279[B]:THR:HG23	2.07	0.54
1:A:301:LYS:N	1:A:301:LYS:HD3	2.22	0.54
1:A:55:VAL:HA	1:A:59:ALA:HB3	1.90	0.53
5:A:2423:OLA:H121	6:A:2427:OLC:H8	1.92	0.52
1:A:1106:LEU:HD11	1:A:222:ARG:NH2	2.26	0.50
5:A:2422:OLA:H51	5:A:2426:OLA:H131	1.96	0.48
6:A:2432:OLC:H2A	6:A:2432:OLC:H5A	1.72	0.47
1:A:174[A]:MET:HG3	1:A:257:PHE:HB2	1.96	0.47
5:A:2410:OLA:H142	5:A:2410:OLA:H111	1.62	0.46
5:A:2416:OLA:H10	5:A:2416:OLA:H132	1.83	0.46
1:A:43:TYR:CE2	6:A:2431:OLC:H24A	2.51	0.45
1:A:1022:ASN:ND2	1:A:1024:ALA:HB3	2.30	0.45
5:A:2409:OLA:H122	5:A:2416:OLA:H151	1.97	0.45
5:A:2426:OLA:H82	5:A:2426:OLA:H112	1.75	0.45
1:A:140[B]:MET:HE3	5:A:2425:OLA:H71	1.98	0.44
1:A:32:TRP:CE3	5:A:2415:OLA:H71	2.53	0.44
1:A:182:PHE:CE1	1:A:187[B]:LEU:HG	2.53	0.43
5:A:2415:OLA:H82	5:A:2415:OLA:H111	1.85	0.43
5:A:2405:OLA:H161	6:A:2430:OLC:H14A	2.01	0.42
5:A:2410:OLA:H183	5:A:2421:OLA:H121	2.00	0.42
5:A:2409:OLA:H151	5:A:2416:OLA:H151	2.01	0.42
1:A:304:ARG:O	1:A:308:LEU:HB2	2.20	0.42
6:A:2429:OLC:H15	6:A:2430:OLC:H14	2.02	0.42
1:A:43:TYR:HB3	6:A:2431:OLC:H2	2.02	0.42
5:A:2410:OLA:H9	5:A:2410:OLA:H61	1.53	0.42
1:A:16:ILE:HD11	1:A:275[A]:VAL:HG13	2.01	0.41
1:A:1071:GLN:OE1	1:A:1097:THR:OG1	2.26	0.41
1:A:1:PRO:HA	1:A:2:PRO:HD3	1.93	0.41
5:A:2422:OLA:C9	5:A:2425:OLA:H72	2.50	0.41
1:A:208:LEU:HG	1:A:225:LEU:HD13	2.03	0.41
5:A:2424:OLA:H112	5:A:2424:OLA:H81	1.78	0.41
1:A:270:MET:HB3	1:A:270:MET:HE3	1.55	0.41
5:A:2426:OLA:H183	5:A:2426:OLA:H151	1.76	0.41

Continued on next page...

Continued from previous page...

Atom-1	Atom-2	Interatomic distance (Å)	Clash overlap (Å)
1:A:103:TYR:HA	1:A:200:ILE:HG12	2.03	0.41
1:A:1004:GLU:HG2	1:A:222:ARG:NH2	2.36	0.40

There are no symmetry-related clashes.

5.3 Torsion angles [i](#)

5.3.1 Protein backbone [i](#)

In the following table, the Percentiles column shows the percent Ramachandran outliers of the chain as a percentile score with respect to all X-ray entries followed by that with respect to entries of similar resolution.

The Analysed column shows the number of residues for which the backbone conformation was analysed, and the total number of residues.

Mol	Chain	Analysed	Favoured	Allowed	Outliers	Percentiles	
1	A	399/433 (92%)	396 (99%)	3 (1%)	0	100	100

There are no Ramachandran outliers to report.

5.3.2 Protein sidechains [i](#)

In the following table, the Percentiles column shows the percent sidechain outliers of the chain as a percentile score with respect to all X-ray entries followed by that with respect to entries of similar resolution.

The Analysed column shows the number of residues for which the sidechain conformation was analysed, and the total number of residues.

Mol	Chain	Analysed	Rotameric	Outliers	Percentiles	
1	A	329/354 (93%)	326 (99%)	3 (1%)	70	73

All (3) residues with a non-rotameric sidechain are listed below:

Mol	Chain	Res	Type
1	A	108	ILE
1	A	275[A]	VAL
1	A	275[B]	VAL

Sometimes sidechains can be flipped to improve hydrogen bonding and reduce clashes. All (1) such sidechains are listed below:

Mol	Chain	Res	Type
1	A	75	HIS

5.3.3 RNA [i](#)

There are no RNA molecules in this entry.

5.4 Non-standard residues in protein, DNA, RNA chains [i](#)

There are no non-standard protein/DNA/RNA residues in this entry.

5.5 Carbohydrates [i](#)

There are no oligosaccharides in this entry.

5.6 Ligand geometry [i](#)

Of 37 ligands modelled in this entry, 1 is monoatomic - leaving 36 for Mogul analysis.

In the following table, the Counts columns list the number of bonds (or angles) for which Mogul statistics could be retrieved, the number of bonds (or angles) that are observed in the model and the number of bonds (or angles) that are defined in the Chemical Component Dictionary. The Link column lists molecule types, if any, to which the group is linked. The Z score for a bond length (or angle) is the number of standard deviations the observed value is removed from the expected value. A bond length (or angle) with $|Z| > 2$ is considered an outlier worth inspection. RMSZ is the root-mean-square of all Z scores of the bond lengths (or angles).

Mol	Type	Chain	Res	Link	Bond lengths			Bond angles		
					Counts	RMSZ	$\# Z > 2$	Counts	RMSZ	$\# Z > 2$
6	OLC	A	2429	-	22,22,24	1.05	1 (4%)	23,23,25	1.34	3 (13%)
5	OLA	A	2409	-	19,19,19	0.59	0	19,19,19	0.95	0
5	OLA	A	2406	-	9,9,19	0.77	0	9,9,19	1.20	0
5	OLA	A	2424	-	14,14,19	0.35	0	13,13,19	0.70	0
5	OLA	A	2413	-	14,14,19	0.64	0	14,14,19	1.12	1 (7%)
5	OLA	A	2420	-	11,11,19	0.38	0	10,10,19	0.80	0
4	CLR	A	2404	-	31,31,31	0.28	0	48,48,48	0.39	0
5	OLA	A	2410	-	19,19,19	0.58	0	19,19,19	1.08	1 (5%)
6	OLC	A	2432	-	17,17,24	1.24	1 (5%)	18,18,25	1.31	2 (11%)
5	OLA	A	2417	-	11,11,19	0.36	0	10,10,19	0.70	0

Mol	Type	Chain	Res	Link	Bond lengths			Bond angles		
					Counts	RMSZ	# Z > 2	Counts	RMSZ	# Z > 2
7	A1CQK	A	2434	-	19,22,22	2.10	9 (47%)	22,29,29	0.90	0
6	OLC	A	2427	-	15,15,24	1.28	1 (6%)	16,16,25	1.36	1 (6%)
5	OLA	A	2423	-	14,14,19	0.69	0	14,14,19	0.97	0
6	OLC	A	2428	-	16,16,24	1.30	1 (6%)	17,17,25	1.30	2 (11%)
5	OLA	A	2412	-	7,7,19	0.87	0	7,7,19	1.25	0
5	OLA	A	2422	-	7,7,19	0.29	0	6,6,19	0.85	0
5	OLA	A	2421	-	8,8,19	0.30	0	7,7,19	0.84	0
5	OLA	A	2415	-	18,18,19	0.60	0	18,18,19	1.05	0
6	OLC	A	2433	-	15,15,24	1.25	1 (6%)	16,16,25	0.98	1 (6%)
5	OLA	A	2405	-	19,19,19	0.59	0	19,19,19	1.00	0
6	OLC	A	2430	-	22,22,24	1.08	1 (4%)	23,23,25	1.30	3 (13%)
5	OLA	A	2425	-	12,12,19	0.72	0	12,12,19	1.19	1 (8%)
5	OLA	A	2414	-	10,10,19	0.72	0	10,10,19	1.22	0
3	TEP	A	2401	-	14,14,14	1.79	4 (28%)	21,21,21	3.26	11 (52%)
5	OLA	A	2408	-	17,17,19	0.59	0	17,17,19	1.06	0
5	OLA	A	2418	-	9,9,19	0.41	0	8,8,19	0.73	0
5	OLA	A	2411	-	11,11,19	0.75	0	11,11,19	1.19	0
5	OLA	A	2407	-	8,8,19	0.81	0	8,8,19	1.24	0
5	OLA	A	2419	-	10,10,19	0.44	0	9,9,19	0.78	0
5	OLA	A	2426	-	19,19,19	0.57	0	19,19,19	1.07	0
4	CLR	A	2402	-	31,31,31	0.30	0	48,48,48	0.46	0
9	PEG	A	2436	-	6,6,6	0.50	0	5,5,5	0.26	0
4	CLR	A	2403	-	31,31,31	0.29	0	48,48,48	0.44	0
5	OLA	A	2416	-	19,19,19	0.62	0	19,19,19	0.85	0
6	OLC	A	2431	-	22,22,24	1.11	1 (4%)	23,23,25	1.33	2 (8%)

In the following table, the Chirals column lists the number of chiral outliers, the number of chiral centers analysed, the number of these observed in the model and the number defined in the Chemical Component Dictionary. Similar counts are reported in the Torsion and Rings columns. '-' means no outliers of that kind were identified.

Mol	Type	Chain	Res	Link	Chirals	Torsions	Rings
6	OLC	A	2429	-	-	11/22/22/24	-
5	OLA	A	2409	-	-	11/17/17/17	-
5	OLA	A	2406	-	-	1/7/7/17	-
5	OLA	A	2424	-	-	1/12/12/17	-
5	OLA	A	2413	-	-	4/12/12/17	-
5	OLA	A	2420	-	-	4/9/9/17	-
4	CLR	A	2404	-	-	1/10/68/68	0/4/4/4
5	OLA	A	2410	-	-	8/17/17/17	-

Continued on next page...

Continued from previous page...

Mol	Type	Chain	Res	Link	Chirals	Torsions	Rings
6	OLC	A	2432	-	-	7/17/17/24	-
5	OLA	A	2417	-	-	3/9/9/17	-
7	A1CQK	A	2434	-	-	0/9/23/23	0/1/2/2
6	OLC	A	2427	-	-	5/15/15/24	-
5	OLA	A	2423	-	-	5/12/12/17	-
6	OLC	A	2428	-	-	8/16/16/24	-
5	OLA	A	2412	-	-	2/5/5/17	-
5	OLA	A	2422	-	-	1/5/5/17	-
5	OLA	A	2421	-	-	2/6/6/17	-
5	OLA	A	2415	-	-	5/16/16/17	-
6	OLC	A	2433	-	-	4/15/15/24	-
5	OLA	A	2405	-	-	10/17/17/17	-
6	OLC	A	2430	-	-	12/22/22/24	-
5	OLA	A	2425	-	-	6/10/10/17	-
5	OLA	A	2414	-	-	3/8/8/17	-
5	OLA	A	2408	-	-	5/15/15/17	-
3	TEP	A	2401	-	-	-	0/2/2/2
5	OLA	A	2418	-	-	1/7/7/17	-
5	OLA	A	2411	-	-	3/9/9/17	-
5	OLA	A	2407	-	-	3/6/6/17	-
5	OLA	A	2419	-	-	6/8/8/17	-
5	OLA	A	2426	-	-	8/17/17/17	-
4	CLR	A	2402	-	-	0/10/68/68	0/4/4/4
9	PEG	A	2436	-	-	2/4/4/4	-
4	CLR	A	2403	-	-	0/10/68/68	0/4/4/4
5	OLA	A	2416	-	-	6/17/17/17	-
6	OLC	A	2431	-	-	11/22/22/24	-

All (20) bond length outliers are listed below:

Mol	Chain	Res	Type	Atoms	Z	Observed(Å)	Ideal(Å)
7	A	2434	A1CQK	C08-N07	4.81	1.45	1.35
7	A	2434	A1CQK	C17-N19	-3.66	1.33	1.38
3	A	2401	TEP	C6-N1	-3.48	1.33	1.40
7	A	2434	A1CQK	C17-N16	-3.44	1.33	1.38
6	A	2427	OLC	O20-C1	3.05	1.42	1.33
6	A	2433	OLC	O20-C1	3.00	1.42	1.33

Continued on next page...

Continued from previous page...

Mol	Chain	Res	Type	Atoms	Z	Observed(Å)	Ideal(Å)
6	A	2428	OLC	O20-C1	2.99	1.42	1.33
7	A	2434	A1CQK	C13-C12	-2.91	1.38	1.49
6	A	2432	OLC	O20-C1	2.88	1.41	1.33
6	A	2431	OLC	O20-C1	2.86	1.41	1.33
6	A	2430	OLC	O20-C1	2.85	1.41	1.33
6	A	2429	OLC	O20-C1	2.76	1.41	1.33
7	A	2434	A1CQK	C13-C14	-2.73	1.38	1.49
3	A	2401	TEP	C5-N7	-2.31	1.34	1.38
3	A	2401	TEP	C5-C6	-2.30	1.38	1.42
3	A	2401	TEP	C5-C4	-2.27	1.34	1.37
7	A	2434	A1CQK	C15-C14	2.19	1.53	1.49
7	A	2434	A1CQK	O18-C17	-2.17	1.19	1.24
7	A	2434	A1CQK	C06-N07	2.12	1.45	1.41
7	A	2434	A1CQK	O09-C08	-2.11	1.19	1.23

All (28) bond angle outliers are listed below:

Mol	Chain	Res	Type	Atoms	Z	Observed(°)	Ideal(°)
3	A	2401	TEP	C4-C5-N7	6.20	108.34	105.29
3	A	2401	TEP	C5-C6-N1	6.03	120.16	112.07
3	A	2401	TEP	C8-N9-C4	5.73	107.29	103.45
3	A	2401	TEP	C5-C4-N9	-4.57	108.43	111.63
3	A	2401	TEP	C6-C5-C4	-3.94	120.02	123.13
6	A	2431	OLC	C8-C9-C10	3.76	153.04	124.83
3	A	2401	TEP	C6-N1-C2	-3.73	119.60	125.66
3	A	2401	TEP	N7-C8-N9	-3.55	108.86	112.98
3	A	2401	TEP	N3-C4-N9	3.52	131.80	126.27
6	A	2429	OLC	C8-C9-C10	3.49	151.02	124.83
6	A	2428	OLC	C8-C9-C10	3.47	151.97	126.65
3	A	2401	TEP	C5-C4-N3	-3.47	119.77	121.73
6	A	2427	OLC	O20-C1-C2	3.46	122.37	111.83
3	A	2401	TEP	O6-C6-C5	-3.42	119.66	126.64
6	A	2430	OLC	C8-C9-C10	3.34	149.85	124.83
6	A	2432	OLC	C8-C9-C10	2.87	152.23	130.48
6	A	2431	OLC	O20-C1-C2	2.72	120.12	111.83
6	A	2432	OLC	O20-C1-C2	2.54	119.58	111.83
6	A	2433	OLC	O20-C1-C2	2.51	119.49	111.83
3	A	2401	TEP	N3-C2-N1	2.50	120.27	117.14
5	A	2410	OLA	C3-C2-C1	-2.45	108.11	114.51
6	A	2430	OLC	O20-C1-C2	2.44	119.26	111.83
6	A	2428	OLC	O20-C1-C2	2.40	119.16	111.83
6	A	2429	OLC	O20-C1-C2	2.14	118.37	111.83

Continued on next page...

Continued from previous page...

Mol	Chain	Res	Type	Atoms	Z	Observed(°)	Ideal(°)
5	A	2425	OLA	C3-C2-C1	-2.09	109.06	114.51
6	A	2430	OLC	C11-C10-C9	-2.06	109.40	124.83
6	A	2429	OLC	C11-C10-C9	-2.05	109.44	124.83
5	A	2413	OLA	C3-C2-C1	-2.03	109.20	114.51

There are no chirality outliers.

All (159) torsion outliers are listed below:

Mol	Chain	Res	Type	Atoms
5	A	2410	OLA	C6-C7-C8-C9
5	A	2417	OLA	C6-C7-C8-C9
6	A	2429	OLC	C21-C22-C24-O25
6	A	2430	OLC	C21-C22-C24-O25
6	A	2430	OLC	O20-C21-C22-O23
6	A	2431	OLC	C10-C11-C12-C13
6	A	2431	OLC	O20-C21-C22-C24
6	A	2432	OLC	O19-C1-O20-C21
6	A	2431	OLC	C2-C1-O20-C21
6	A	2432	OLC	C2-C1-O20-C21
6	A	2431	OLC	O19-C1-O20-C21
5	A	2423	OLA	C1-C2-C3-C4
5	A	2425	OLA	C1-C2-C3-C4
6	A	2431	OLC	C1-C2-C3-C4
6	A	2430	OLC	C1-C2-C3-C4
6	A	2433	OLC	C1-C2-C3-C4
6	A	2427	OLC	O20-C21-C22-O23
6	A	2431	OLC	O20-C21-C22-O23
6	A	2427	OLC	O20-C21-C22-C24
6	A	2430	OLC	O20-C21-C22-C24
5	A	2413	OLA	C10-C11-C12-C13
6	A	2428	OLC	O20-C21-C22-O23
6	A	2432	OLC	O20-C21-C22-O23
9	A	2436	PEG	O1-C1-C2-O2
5	A	2426	OLA	C11-C12-C13-C14
6	A	2429	OLC	O23-C22-C24-O25
6	A	2430	OLC	O23-C22-C24-O25
6	A	2428	OLC	C1-C2-C3-C4
5	A	2405	OLA	C14-C15-C16-C17
5	A	2417	OLA	C12-C13-C14-C15
5	A	2419	OLA	C11-C12-C13-C14
5	A	2423	OLA	C5-C6-C7-C8
6	A	2432	OLC	C5-C6-C7-C8

Continued on next page...

Continued from previous page...

Mol	Chain	Res	Type	Atoms
6	A	2432	OLC	C6-C7-C8-C9
5	A	2407	OLA	C3-C4-C5-C6
5	A	2415	OLA	C5-C6-C7-C8
5	A	2423	OLA	C3-C4-C5-C6
6	A	2430	OLC	C12-C13-C14-C15
5	A	2418	OLA	C9-C10-C11-C12
6	A	2432	OLC	C4-C5-C6-C7
6	A	2429	OLC	C3-C4-C5-C6
6	A	2429	OLC	C10-C11-C12-C13
5	A	2426	OLA	C15-C16-C17-C18
6	A	2429	OLC	C4-C5-C6-C7
5	A	2405	OLA	C12-C13-C14-C15
5	A	2408	OLA	C4-C5-C6-C7
5	A	2426	OLA	C6-C7-C8-C9
5	A	2410	OLA	C15-C16-C17-C18
5	A	2406	OLA	C3-C4-C5-C6
5	A	2405	OLA	C2-C3-C4-C5
5	A	2416	OLA	C3-C4-C5-C6
6	A	2433	OLC	C2-C3-C4-C5
6	A	2432	OLC	C3-C4-C5-C6
5	A	2414	OLA	C4-C5-C6-C7
5	A	2405	OLA	C10-C11-C12-C13
5	A	2408	OLA	C6-C7-C8-C9
5	A	2409	OLA	C10-C11-C12-C13
5	A	2424	OLA	C6-C7-C8-C9
5	A	2409	OLA	C13-C14-C15-C16
6	A	2428	OLC	C3-C4-C5-C6
4	A	2404	CLR	C20-C22-C23-C24
5	A	2416	OLA	C5-C6-C7-C8
5	A	2405	OLA	C6-C7-C8-C9
6	A	2429	OLC	C6-C7-C8-C9
5	A	2411	OLA	C4-C5-C6-C7
5	A	2409	OLA	C6-C7-C8-C9
6	A	2431	OLC	C6-C7-C8-C9
6	A	2431	OLC	C3-C4-C5-C6
5	A	2405	OLA	C15-C16-C17-C18
5	A	2426	OLA	C4-C5-C6-C7
6	A	2430	OLC	C5-C6-C7-C8
5	A	2409	OLA	C14-C15-C16-C17
6	A	2428	OLC	C4-C5-C6-C7
6	A	2430	OLC	C4-C5-C6-C7
6	A	2427	OLC	C6-C7-C8-C9

Continued on next page...

Continued from previous page...

Mol	Chain	Res	Type	Atoms
5	A	2405	OLA	C4-C5-C6-C7
6	A	2429	OLC	C12-C13-C14-C15
5	A	2419	OLA	C12-C13-C14-C15
6	A	2431	OLC	C4-C5-C6-C7
5	A	2405	OLA	C11-C12-C13-C14
5	A	2425	OLA	C5-C6-C7-C8
5	A	2426	OLA	C1-C2-C3-C4
5	A	2410	OLA	C1-C2-C3-C4
6	A	2433	OLC	C6-C7-C8-C9
5	A	2410	OLA	C5-C6-C7-C8
5	A	2410	OLA	C10-C11-C12-C13
5	A	2423	OLA	C2-C3-C4-C5
5	A	2416	OLA	C11-C12-C13-C14
5	A	2417	OLA	C11-C12-C13-C14
5	A	2411	OLA	C1-C2-C3-C4
5	A	2425	OLA	C6-C7-C8-C9
5	A	2426	OLA	C12-C13-C14-C15
5	A	2425	OLA	C2-C3-C4-C5
6	A	2428	OLC	C2-C3-C4-C5
5	A	2419	OLA	C10-C11-C12-C13
5	A	2408	OLA	C12-C13-C14-C15
5	A	2420	OLA	C9-C10-C11-C12
5	A	2420	OLA	C4-C5-C6-C7
9	A	2436	PEG	C4-C3-O2-C2
5	A	2421	OLA	C15-C16-C17-C18
5	A	2409	OLA	C12-C13-C14-C15
5	A	2415	OLA	C11-C12-C13-C14
6	A	2429	OLC	C2-C3-C4-C5
5	A	2425	OLA	C4-C5-C6-C7
5	A	2409	OLA	C3-C4-C5-C6
6	A	2428	OLC	C2-C1-O20-C21
6	A	2430	OLC	C10-C11-C12-C13
6	A	2430	OLC	C2-C3-C4-C5
5	A	2408	OLA	C3-C4-C5-C6
5	A	2421	OLA	C12-C13-C14-C15
6	A	2428	OLC	O19-C1-O20-C21
5	A	2420	OLA	C2-C3-C4-C5
5	A	2409	OLA	C4-C5-C6-C7
5	A	2423	OLA	C4-C5-C6-C7
5	A	2410	OLA	C12-C13-C14-C15
6	A	2433	OLC	C4-C5-C6-C7
5	A	2412	OLA	C2-C3-C4-C5

Continued on next page...

Continued from previous page...

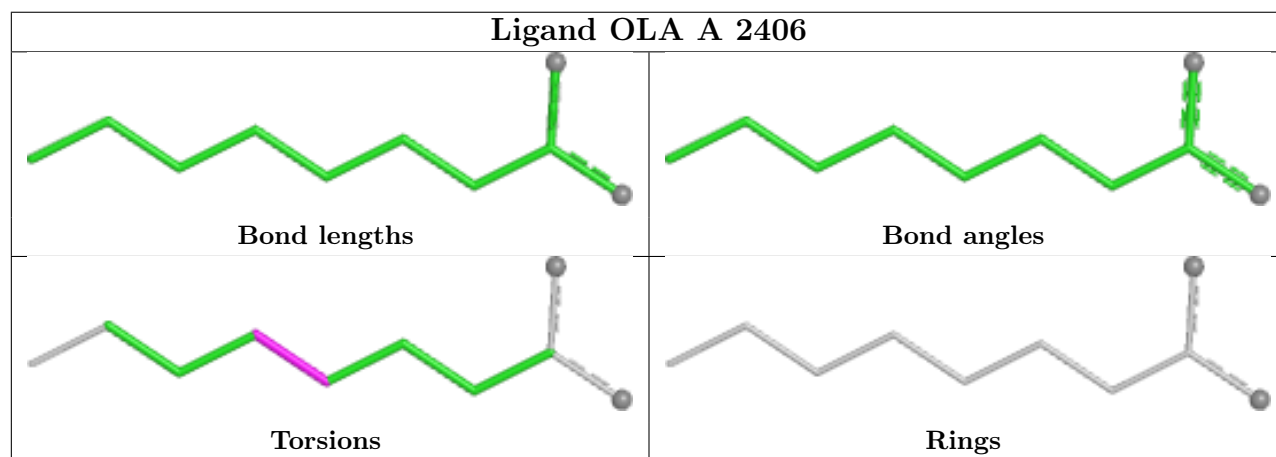
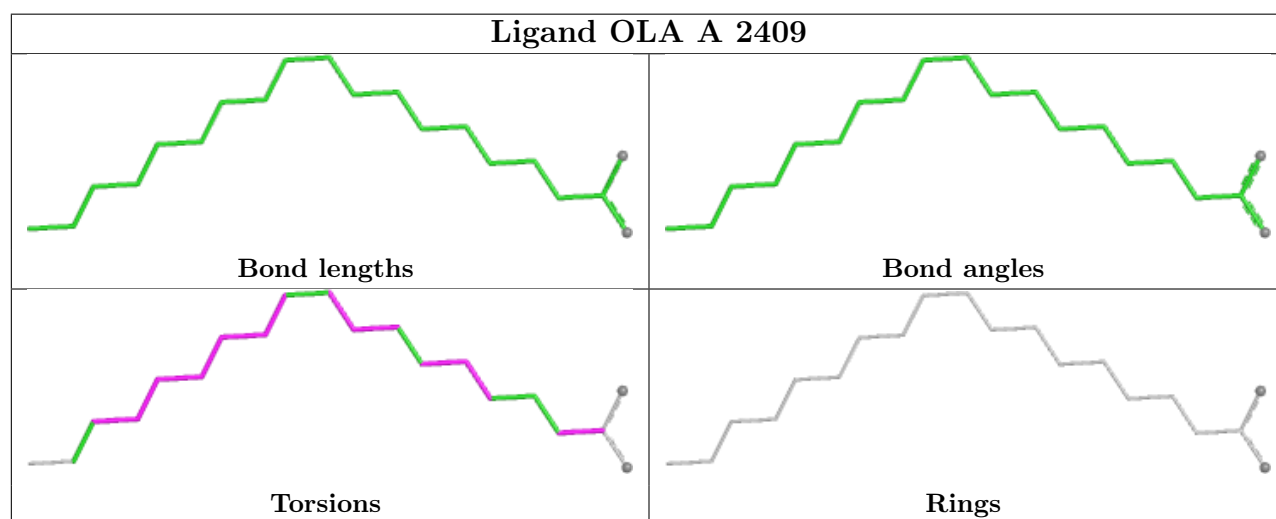
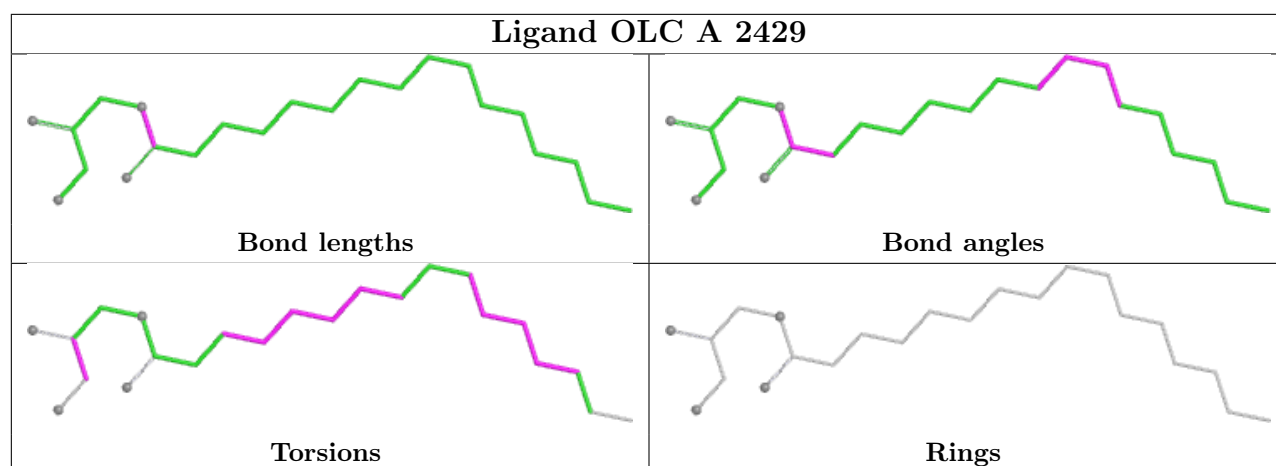
Mol	Chain	Res	Type	Atoms
5	A	2419	OLA	C15-C16-C17-C18
5	A	2426	OLA	C3-C4-C5-C6
5	A	2416	OLA	C12-C13-C14-C15
6	A	2429	OLC	C9-C10-C11-C12
5	A	2410	OLA	C11-C12-C13-C14
5	A	2411	OLA	C3-C4-C5-C6
6	A	2428	OLC	C7-C8-C9-C10
5	A	2409	OLA	C11-C12-C13-C14
6	A	2430	OLC	C2-C1-O20-C21
5	A	2420	OLA	C7-C8-C9-C10
6	A	2430	OLC	O19-C1-O20-C21
5	A	2414	OLA	C3-C4-C5-C6
5	A	2419	OLA	C13-C14-C15-C16
6	A	2427	OLC	C2-C1-O20-C21
5	A	2415	OLA	C3-C4-C5-C6
5	A	2413	OLA	C4-C5-C6-C7
5	A	2405	OLA	C5-C6-C7-C8
6	A	2429	OLC	C11-C12-C13-C14
5	A	2416	OLA	C7-C8-C9-C10
6	A	2431	OLC	C9-C10-C11-C12
5	A	2416	OLA	C13-C14-C15-C16
6	A	2427	OLC	O19-C1-O20-C21
5	A	2407	OLA	O2-C1-C2-C3
5	A	2407	OLA	O1-C1-C2-C3
5	A	2414	OLA	C1-C2-C3-C4
5	A	2409	OLA	C7-C8-C9-C10
5	A	2413	OLA	C9-C10-C11-C12
5	A	2419	OLA	C9-C10-C11-C12
5	A	2425	OLA	C7-C8-C9-C10
5	A	2415	OLA	C7-C8-C9-C10
5	A	2426	OLA	C14-C15-C16-C17
5	A	2409	OLA	C9-C10-C11-C12
6	A	2431	OLC	C5-C6-C7-C8
5	A	2410	OLA	C7-C8-C9-C10
5	A	2413	OLA	C7-C8-C9-C10
6	A	2429	OLC	C5-C6-C7-C8
5	A	2408	OLA	C13-C14-C15-C16
5	A	2415	OLA	C6-C7-C8-C9
5	A	2405	OLA	C3-C4-C5-C6
5	A	2412	OLA	O2-C1-C2-C3
5	A	2422	OLA	C2-C3-C4-C5
5	A	2409	OLA	O1-C1-C2-C3

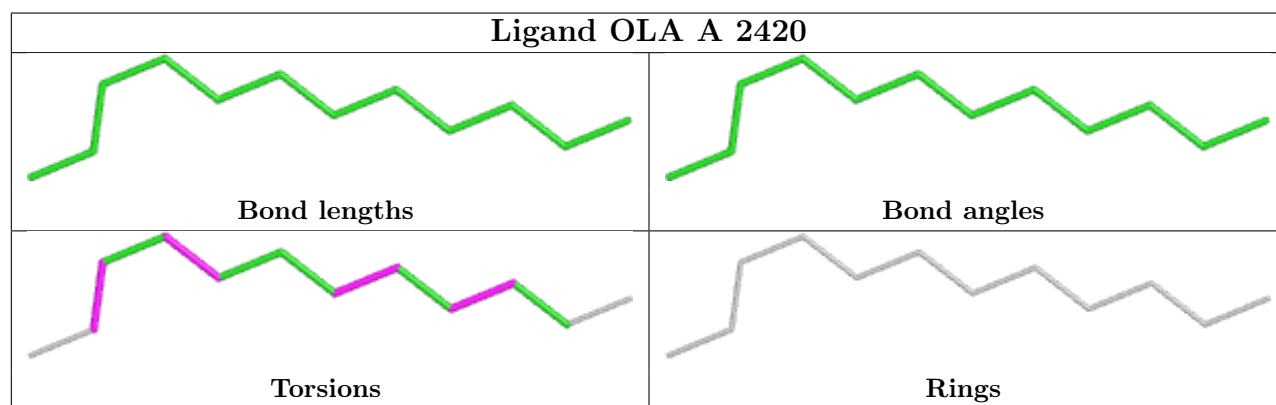
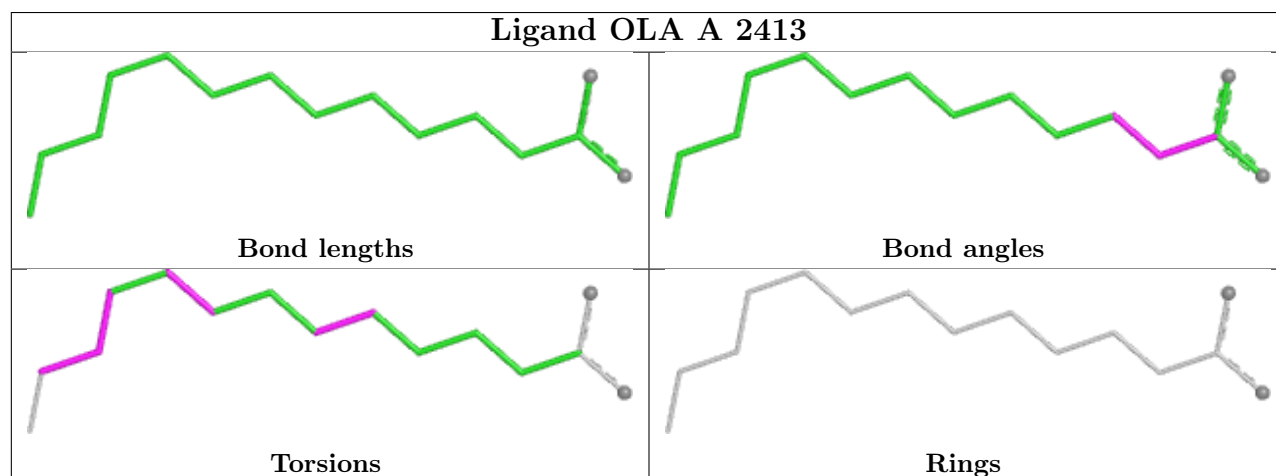
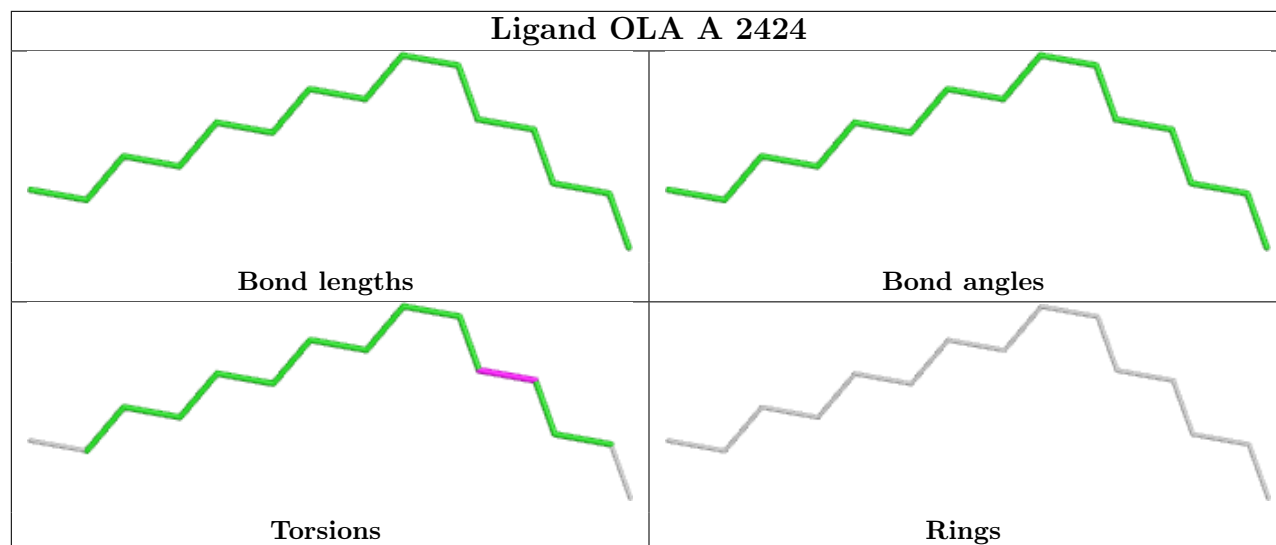
There are no ring outliers.

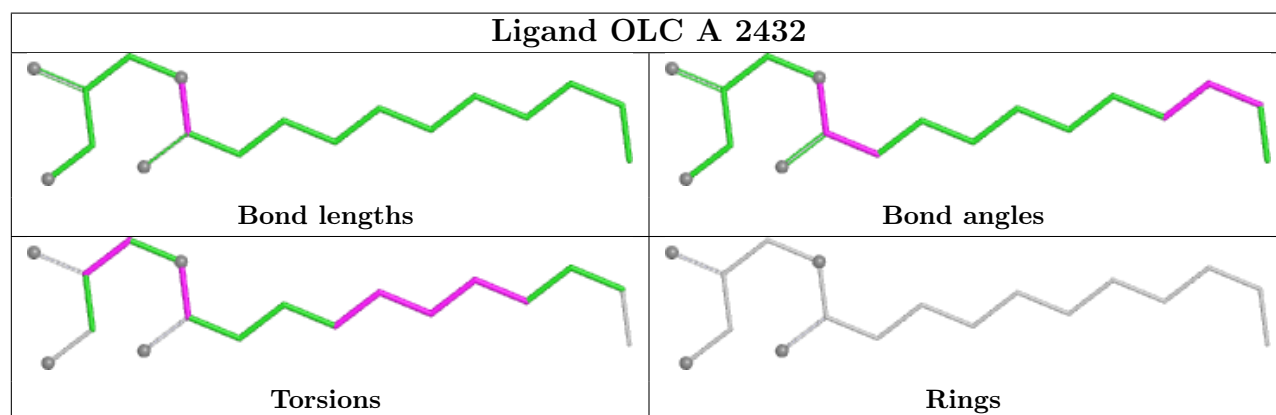
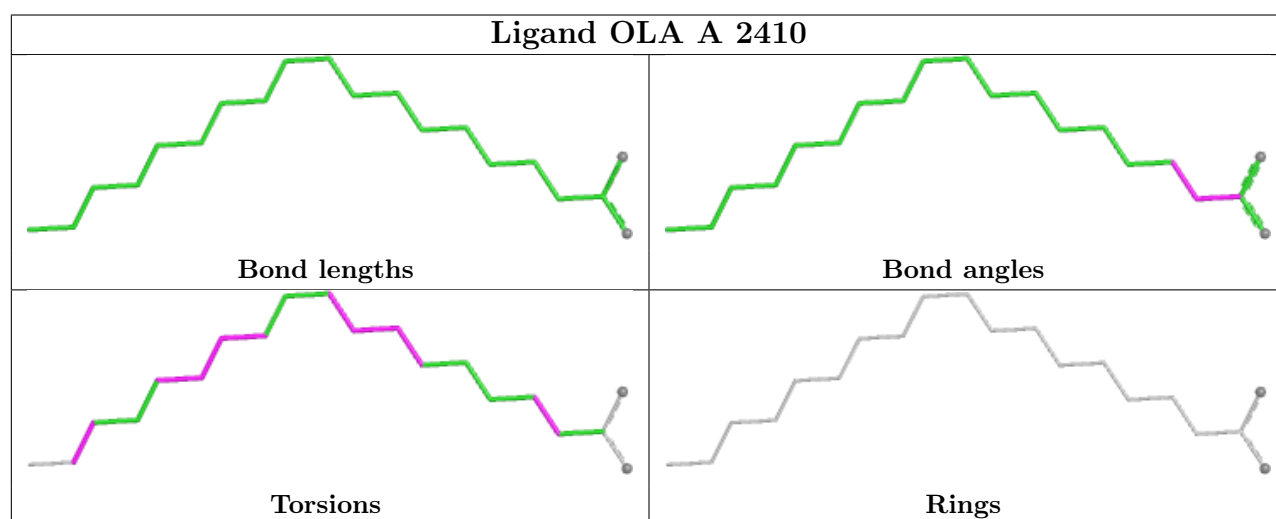
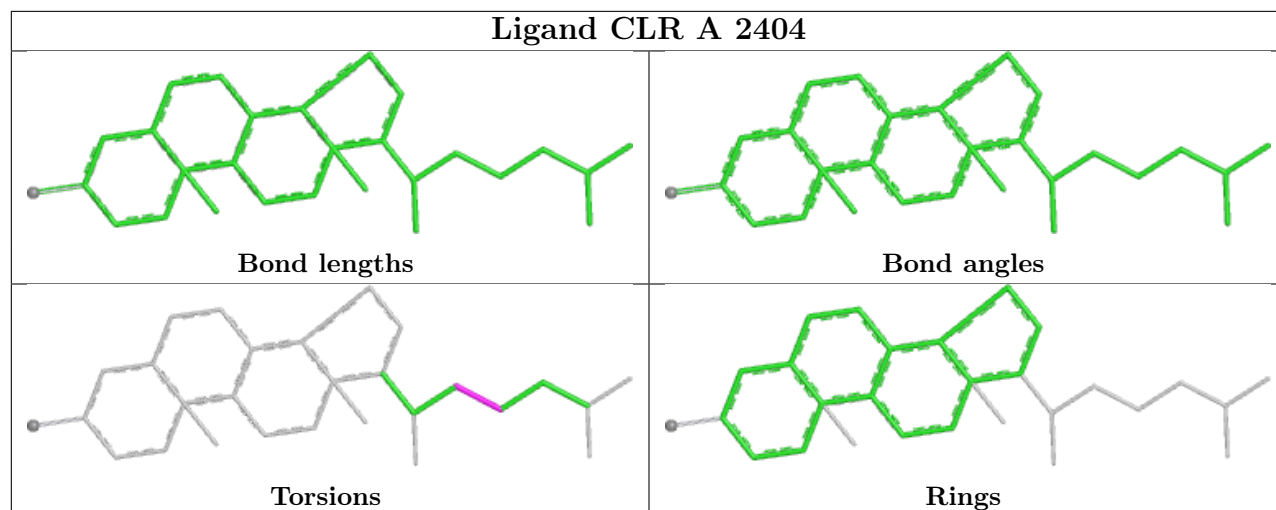
17 monomers are involved in 24 short contacts:

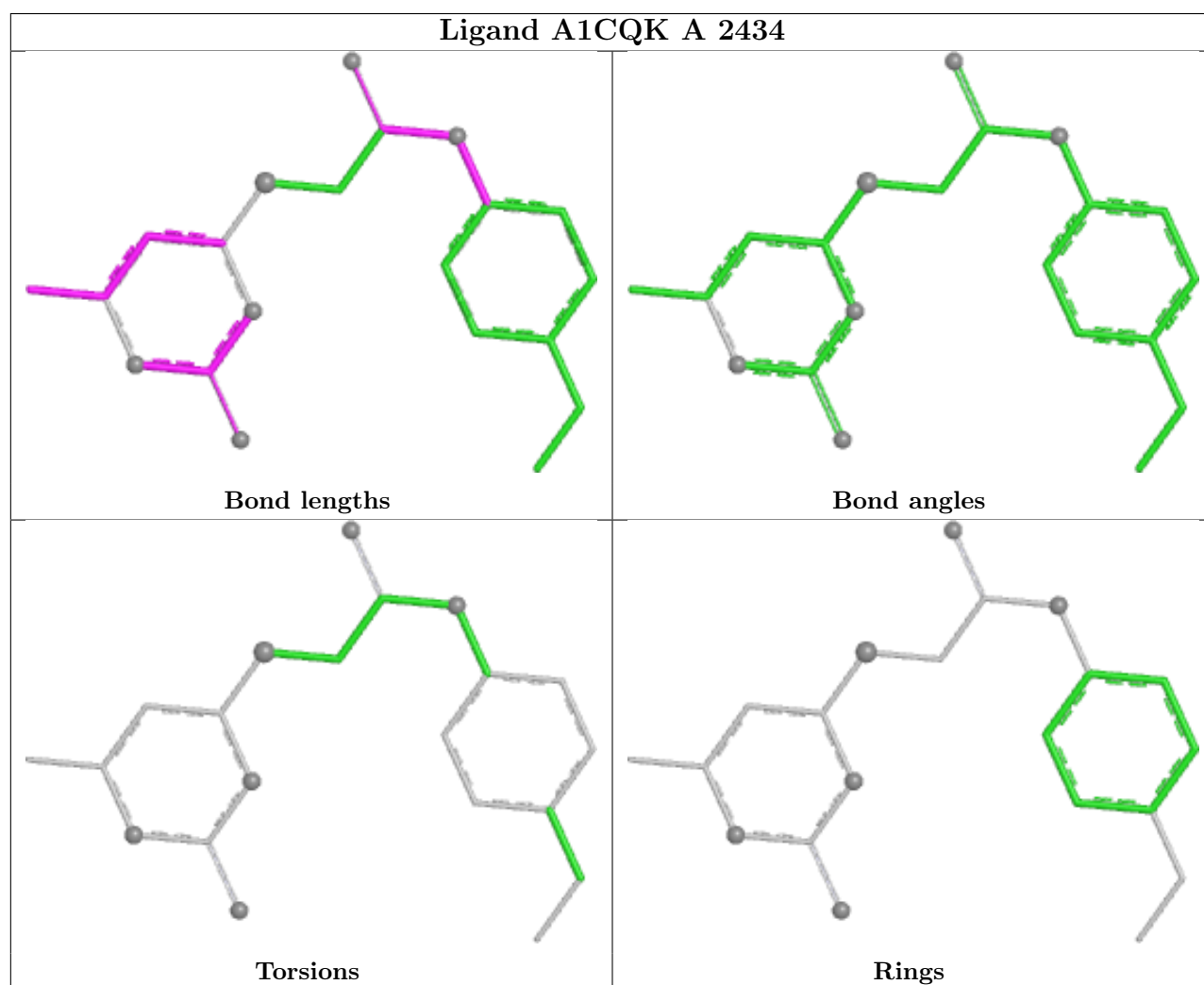
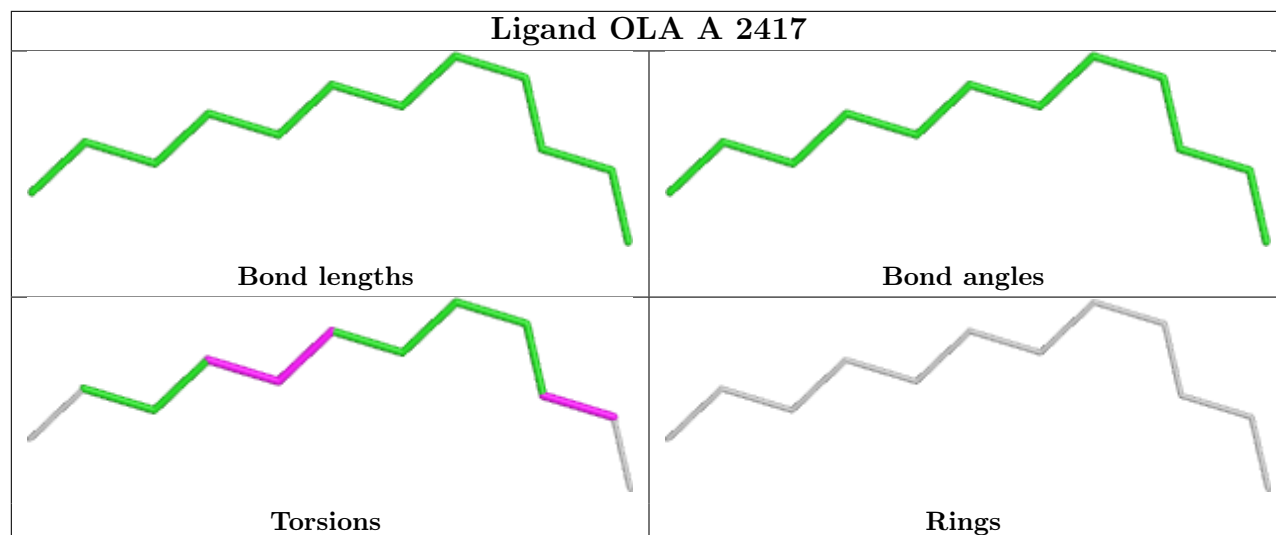
Mol	Chain	Res	Type	Clashes	Symm-Clashes
6	A	2429	OLC	2	0
5	A	2409	OLA	2	0
5	A	2424	OLA	1	0
5	A	2410	OLA	3	0
6	A	2432	OLC	1	0
6	A	2427	OLC	1	0
5	A	2423	OLA	1	0
5	A	2422	OLA	2	0
5	A	2421	OLA	1	0
5	A	2415	OLA	2	0
6	A	2433	OLC	1	0
5	A	2405	OLA	1	0
6	A	2430	OLC	4	0
5	A	2425	OLA	4	0
5	A	2426	OLA	3	0
5	A	2416	OLA	3	0
6	A	2431	OLC	2	0

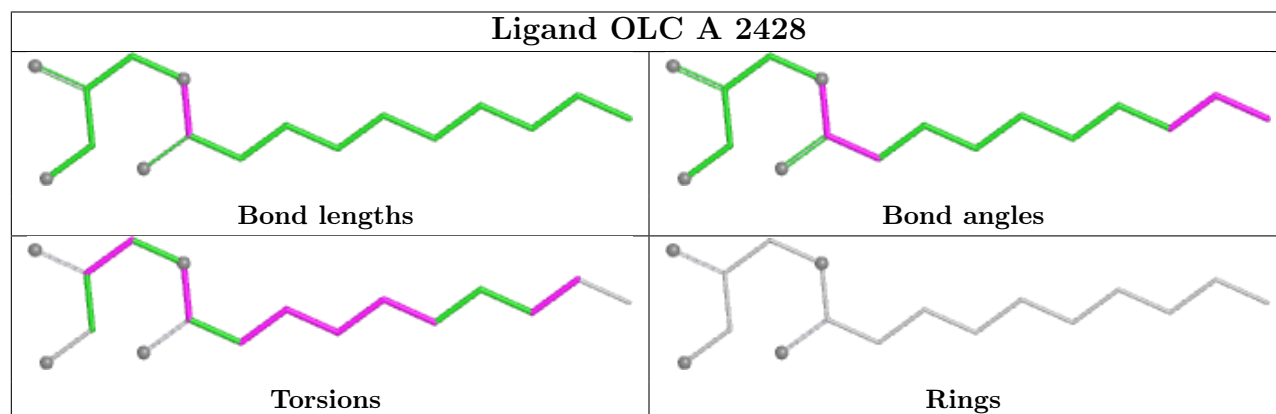
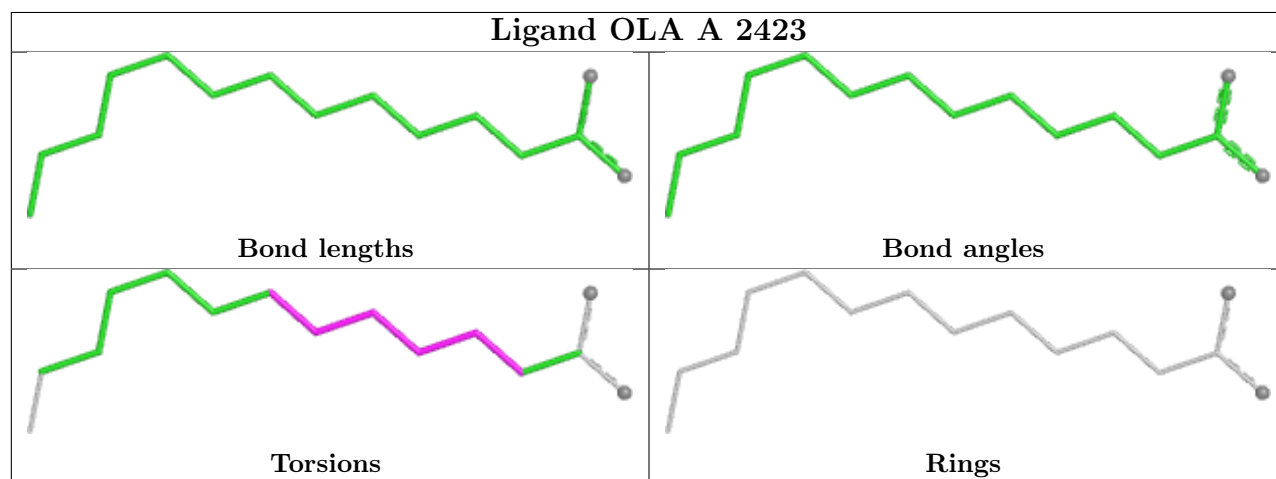
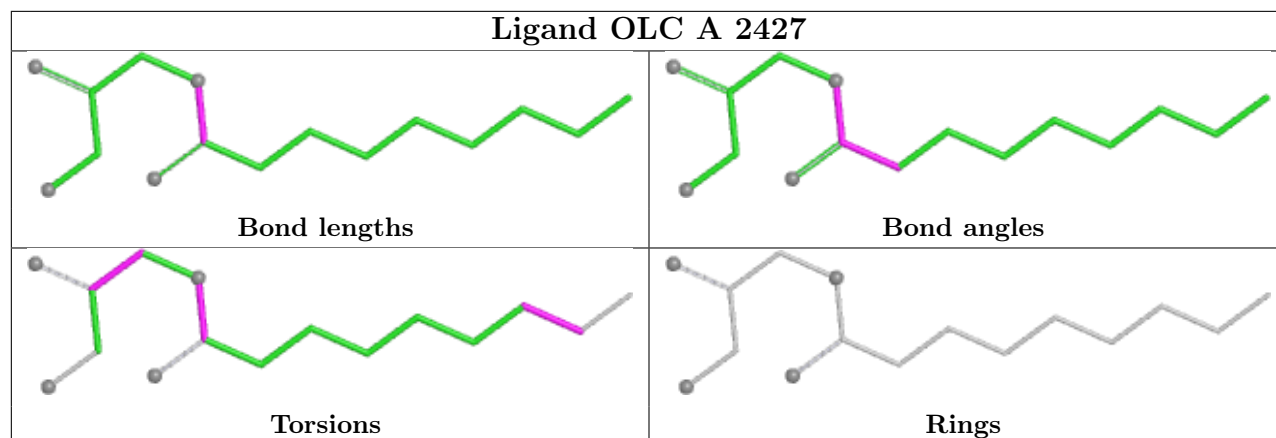
The following is a two-dimensional graphical depiction of Mogul quality analysis of bond lengths, bond angles, torsion angles, and ring geometry for all instances of the Ligand of Interest. In addition, ligands with molecular weight > 250 and outliers as shown on the validation Tables will also be included. For torsion angles, if less than 5% of the Mogul distribution of torsion angles is within 10 degrees of the torsion angle in question, then that torsion angle is considered an outlier. Any bond that is central to one or more torsion angles identified as an outlier by Mogul will be highlighted in the graph. For rings, the root-mean-square deviation (RMSD) between the ring in question and similar rings identified by Mogul is calculated over all ring torsion angles. If the average RMSD is greater than 60 degrees and the minimal RMSD between the ring in question and any Mogul-identified rings is also greater than 60 degrees, then that ring is considered an outlier. The outliers are highlighted in purple. The color gray indicates Mogul did not find sufficient equivalents in the CSD to analyse the geometry.

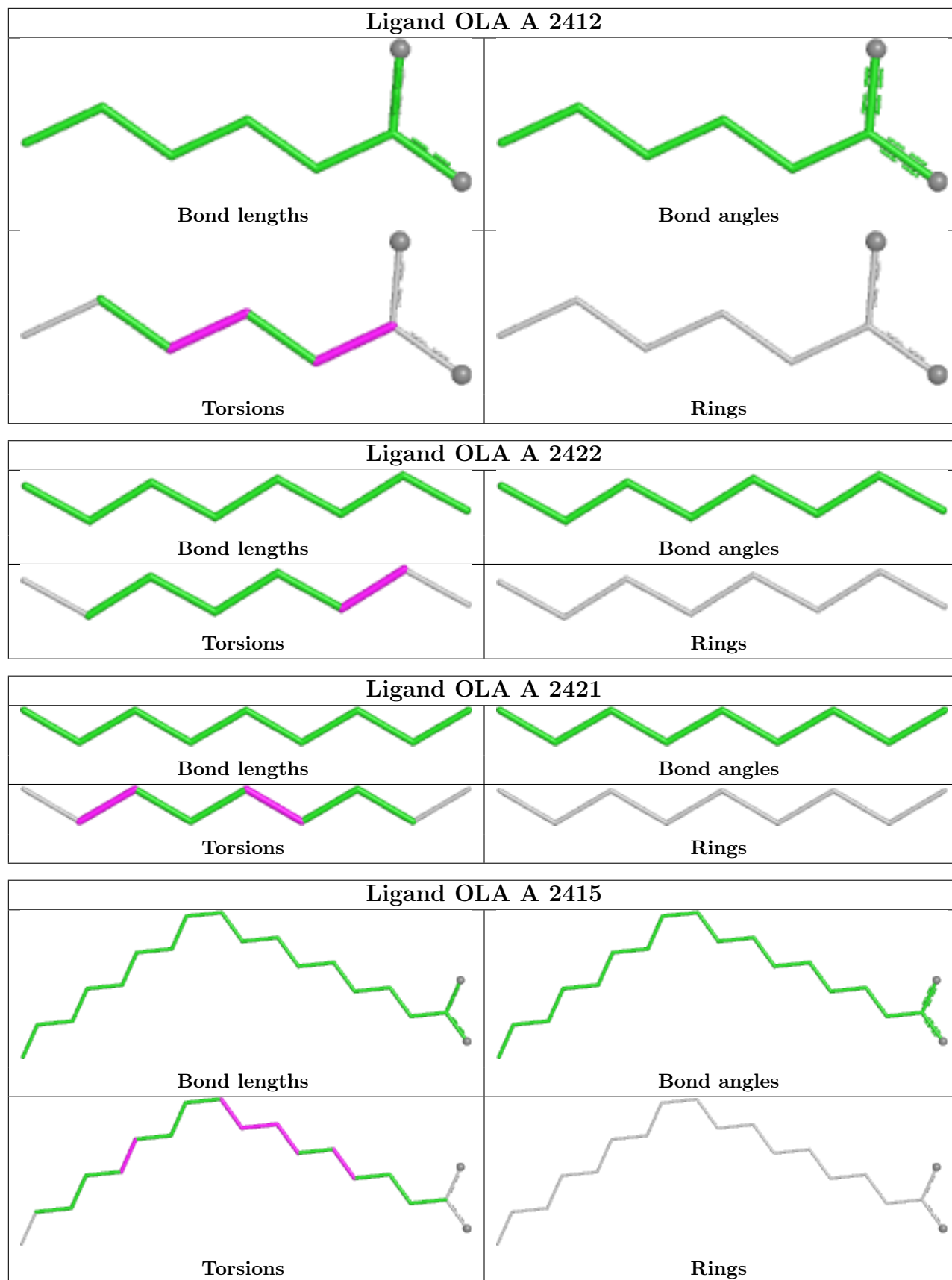


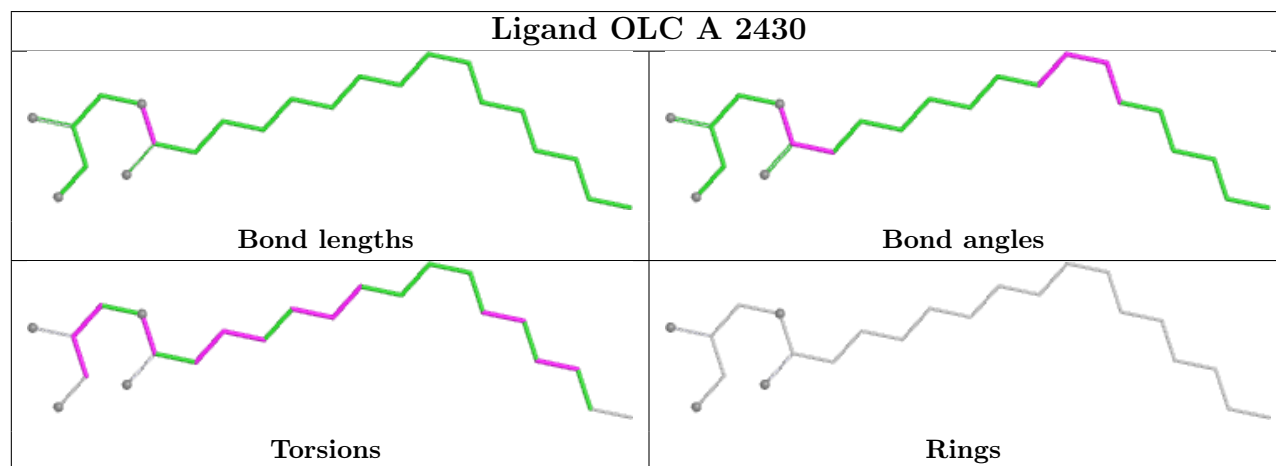
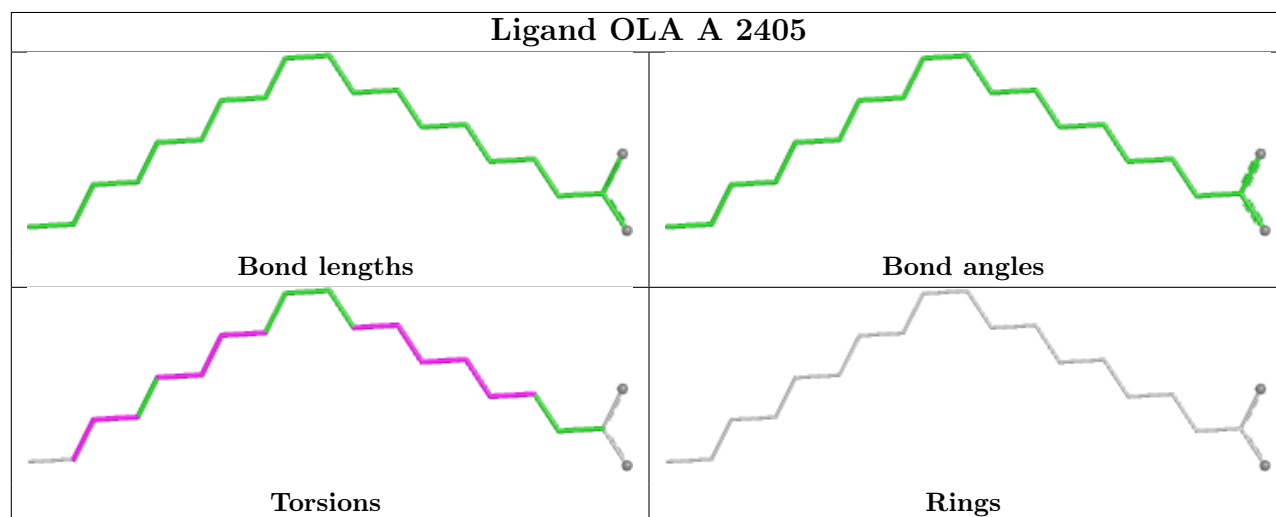
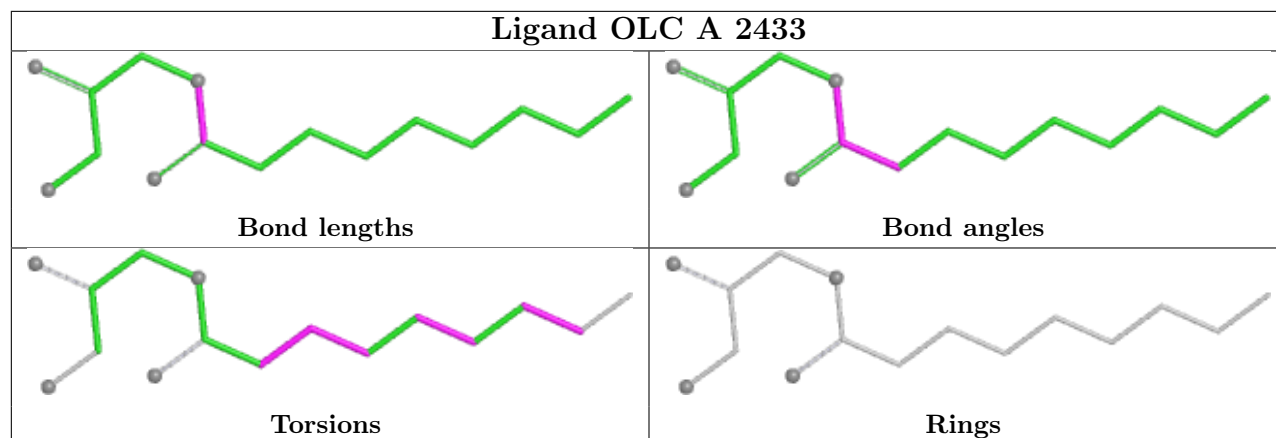


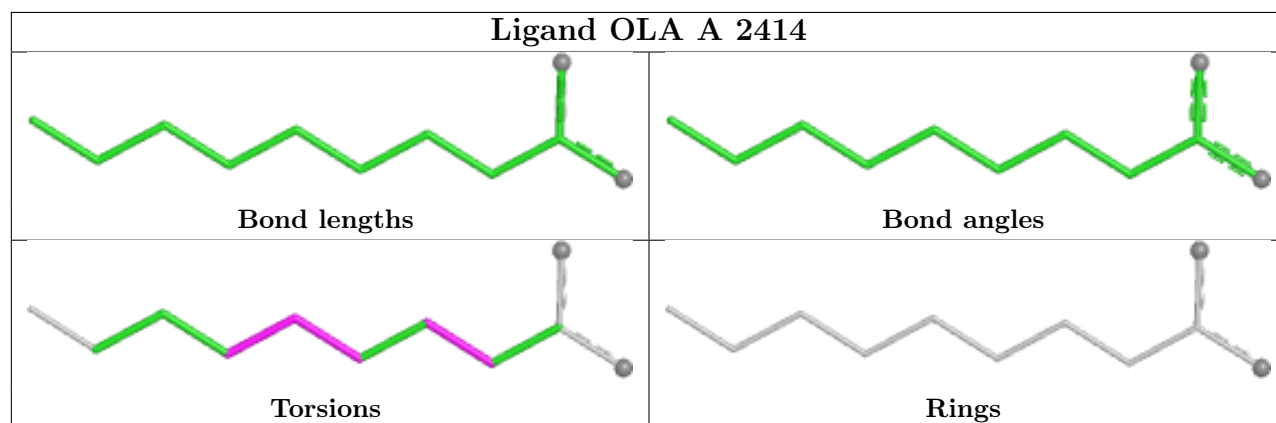
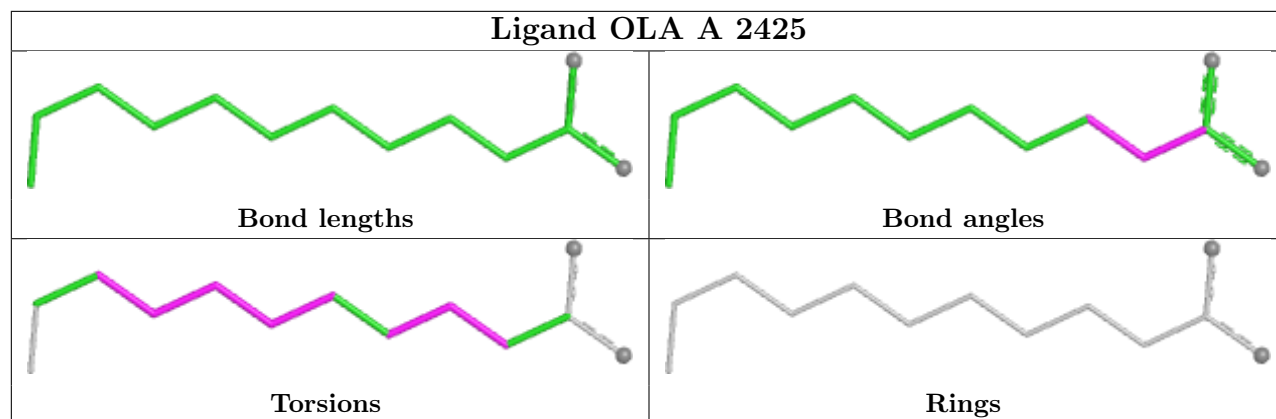




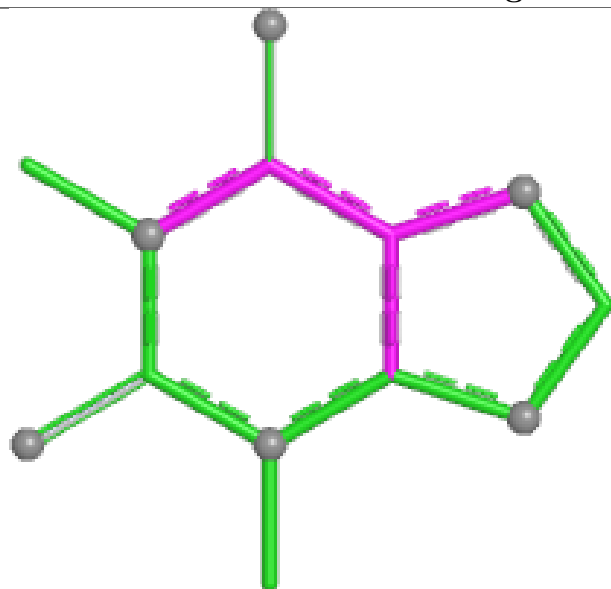




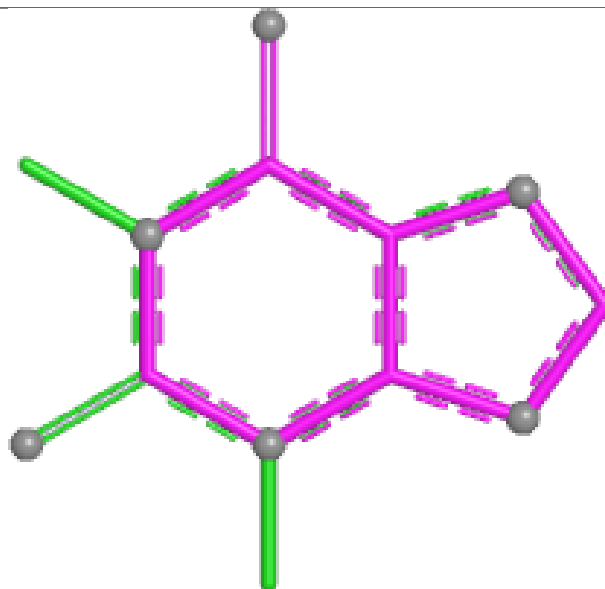




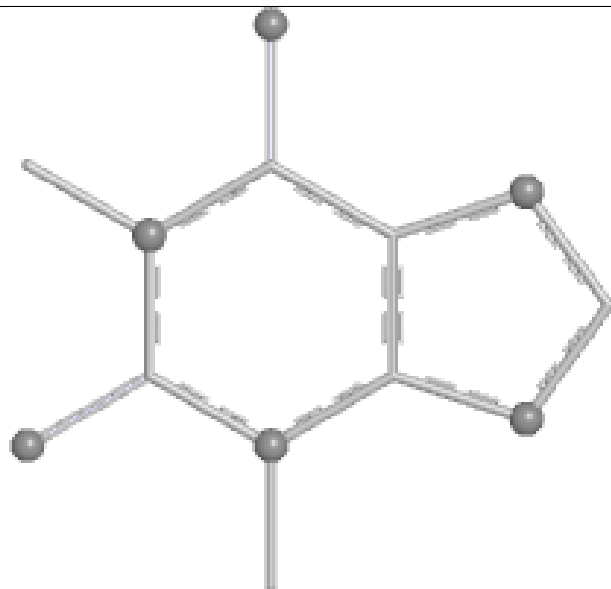
Ligand TEP A 2401



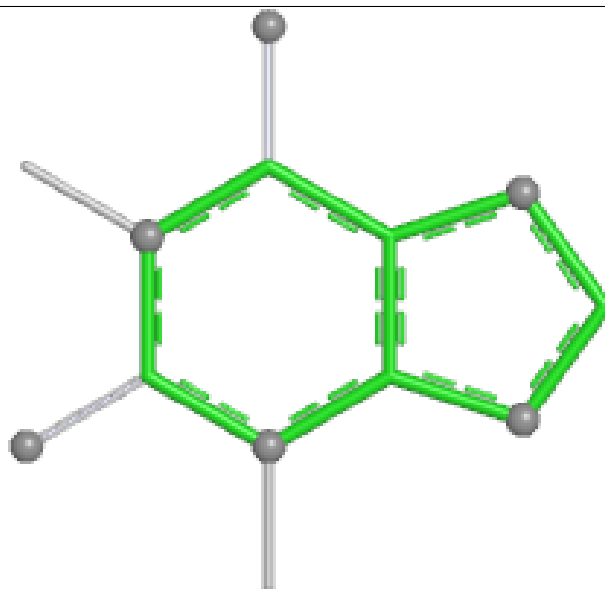
Bond lengths



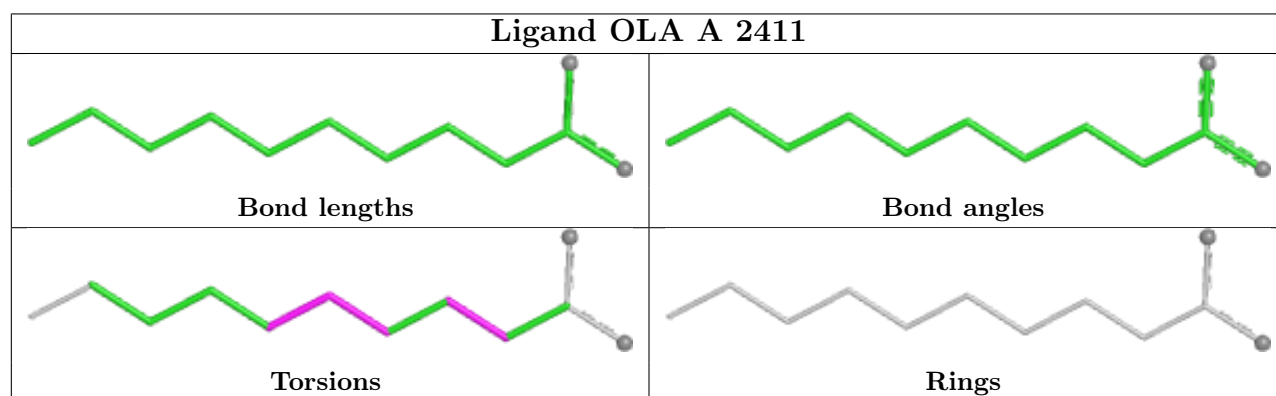
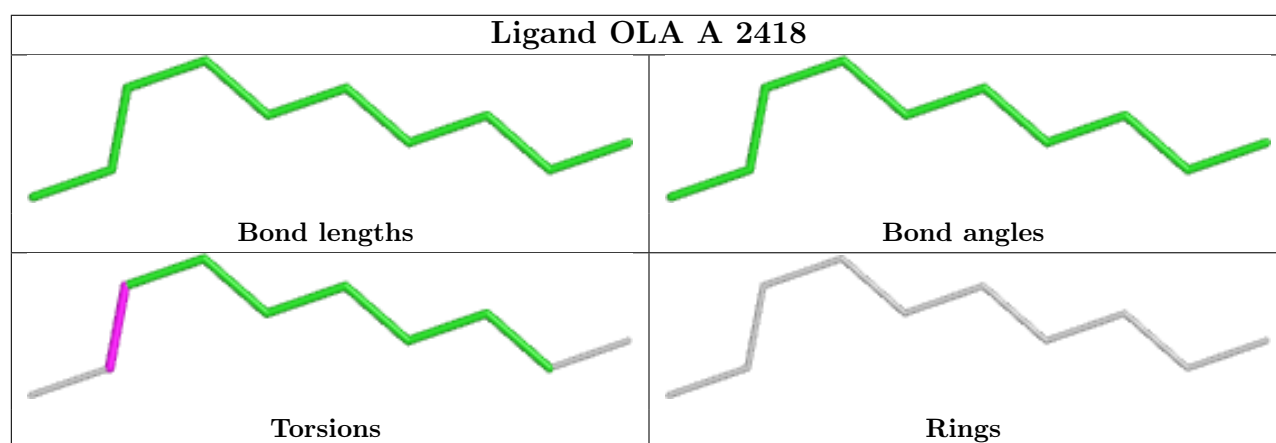
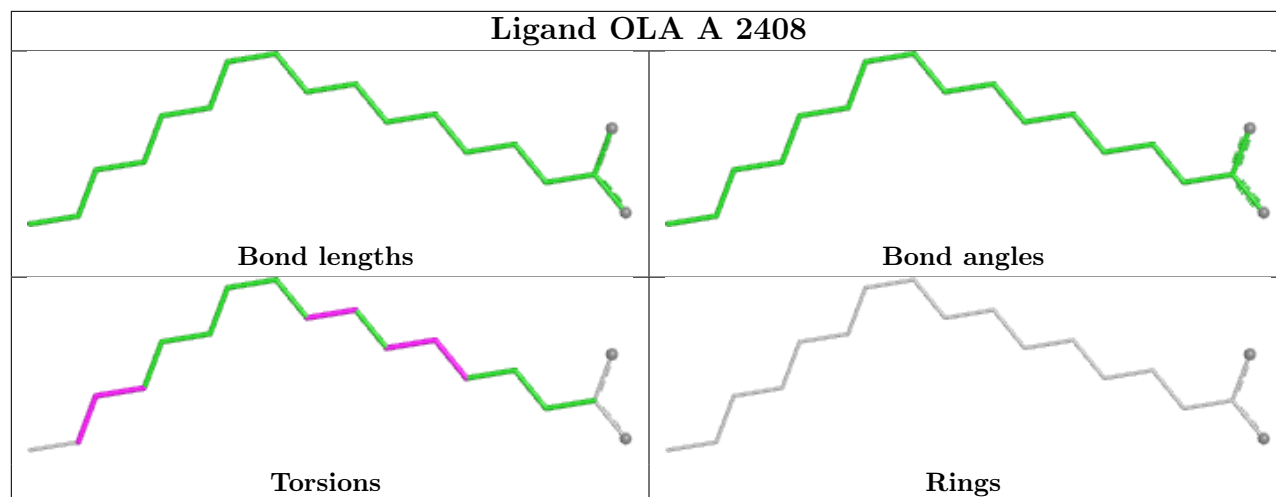
Bond angles

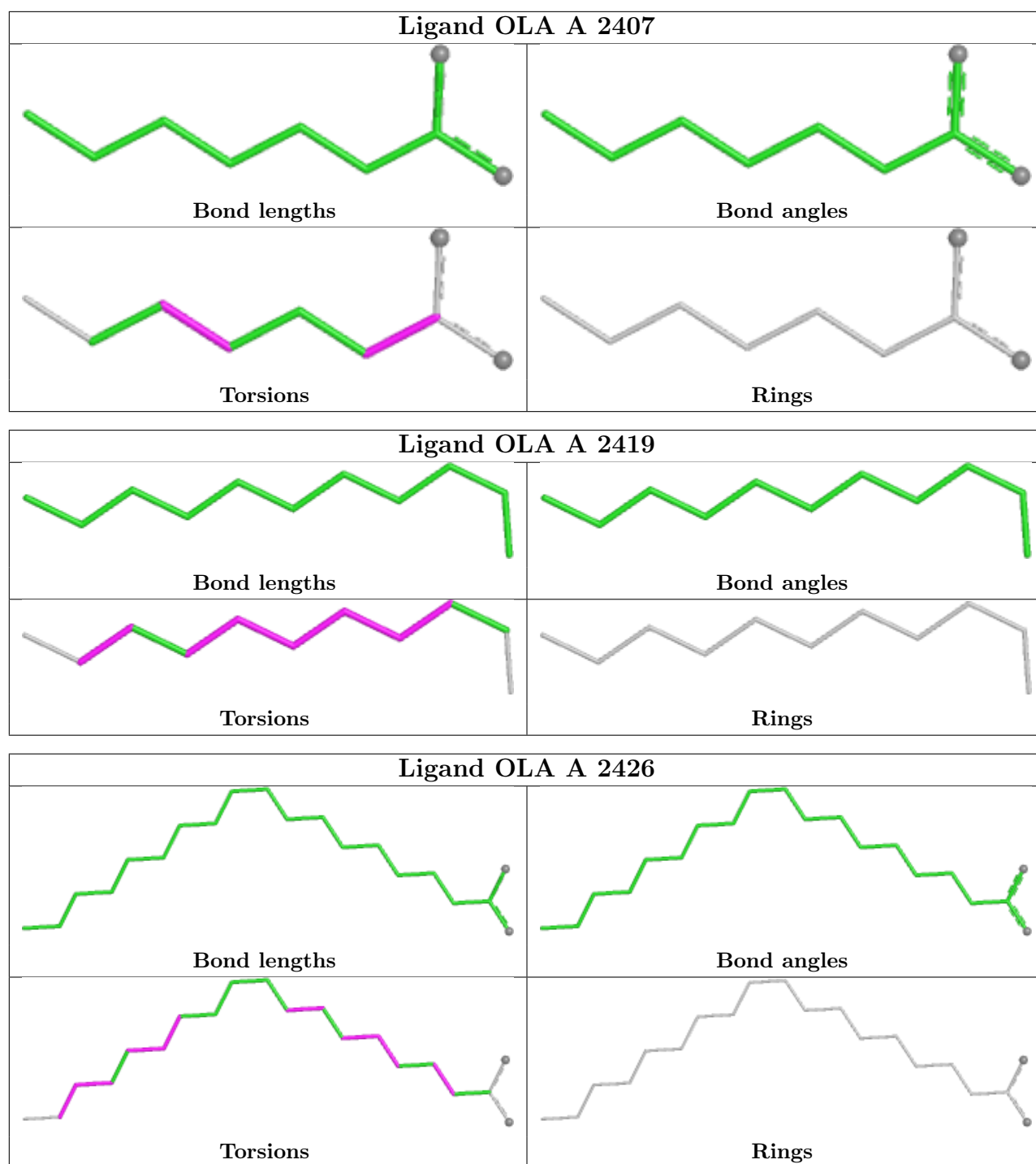


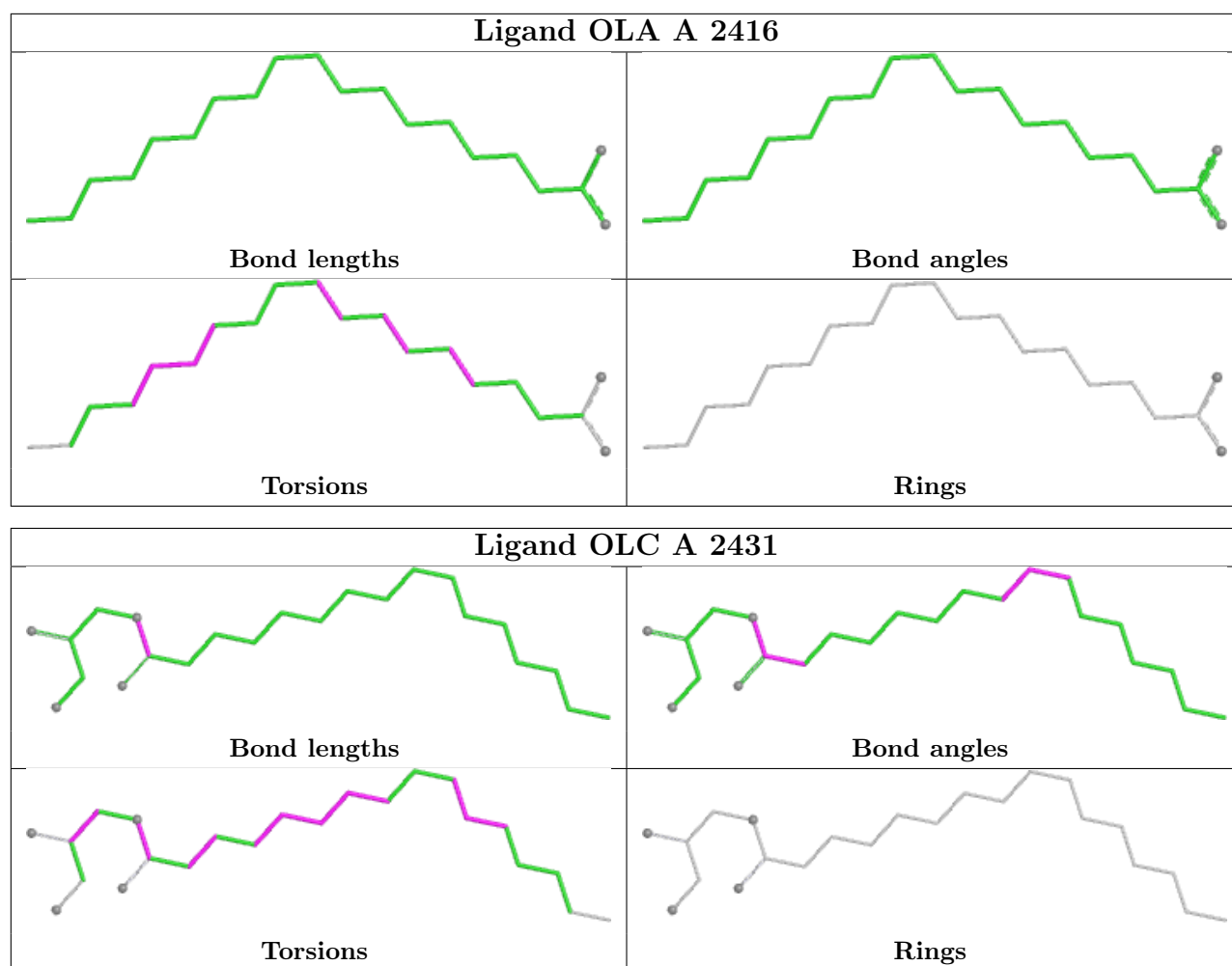
Torsions



Rings







5.7 Other polymers [i](#)

There are no such residues in this entry.

5.8 Polymer linkage issues [i](#)

There are no chain breaks in this entry.

6 Fit of model and data ⓘ

6.1 Protein, DNA and RNA chains ⓘ

In the following table, the column labelled ‘#RSRZ> 2’ contains the number (and percentage) of RSRZ outliers, followed by percent RSRZ outliers for the chain as percentile scores relative to all X-ray entries and entries of similar resolution. The OWAB column contains the minimum, median, 95th percentile and maximum values of the occupancy-weighted average B-factor per residue. The column labelled ‘Q< 0.9’ lists the number of (and percentage) of residues with an average occupancy less than 0.9.

Mol	Chain	Analysed	<RSRZ>	#RSRZ>2	OWAB(Å ²)	Q<0.9
1	A	390/433 (90%)	0.77	63 (16%) 4 4	11, 34, 72, 109	14 (3%)

All (63) RSRZ outliers are listed below:

Mol	Chain	Res	Type	RSRZ
1	A	1061	PHE	7.8
1	A	307	VAL	6.2
1	A	308	LEU	6.1
1	A	306	HIS	5.1
1	A	1106	LEU	4.3
1	A	29	TRP	3.9
1	A	1035	ALA	3.8
1	A	1036	ALA	3.8
1	A	1037	ALA	3.7
1	A	1023	ALA	3.6
1	A	1022	ASN	3.5
1	A	1084	VAL	3.4
1	A	1038	LEU	3.4
1	A	1017	ILE	3.3
1	A	1105	TYR	3.2
1	A	1020	ALA	3.1
1	A	1040	ALA	3.1
1	A	1021	ASP	3.1
1	A	1063	HIS	3.0
1	A	1026	VAL	3.0
1	A	208	LEU	3.0
1	A	1062	ARG	2.9
1	A	0	ALA	2.9
1	A	1016	VAL	2.9
1	A	1003	LEU	2.9
1	A	1001	ALA	2.9
1	A	32	TRP	2.9

Continued on next page...

Continued from previous page...

Mol	Chain	Res	Type	RSRZ
1	A	1042	LYS	2.8
1	A	1059	LYS	2.8
1	A	309	ARG	2.8
1	A	305	SER	2.8
1	A	290	TYR	2.7
1	A	157	GLN	2.6
1	A	1007	TRP	2.6
1	A	1087	ALA	2.5
1	A	111	ARG	2.5
1	A	1	PRO	2.5
1	A	205[A]	ARG	2.4
1	A	1094	LEU	2.4
1	A	303	ILE	2.4
1	A	1006	ASN	2.4
1	A	75	HIS	2.3
1	A	1064	GLY	2.3
1	A	1024	ALA	2.3
1	A	304	ARG	2.3
1	A	1091	ALA	2.2
1	A	1100	ALA	2.2
1	A	1039	ASP	2.2
1	A	1041	GLN	2.2
1	A	1029	ALA	2.2
1	A	1102	ILE	2.2
1	A	302	ILE	2.2
1	A	1065	PHE	2.2
1	A	1099	ASN	2.1
1	A	1077	LYS	2.1
1	A	1101	TYR	2.1
1	A	1076	LEU	2.1
1	A	1079	ALA	2.1
1	A	108	ILE	2.0
1	A	1025	GLN	2.0
1	A	2	PRO	2.0
1	A	1010	LEU	2.0
1	A	1005	ASP	2.0

6.2 Non-standard residues in protein, DNA, RNA chains ⓘ

There are no non-standard protein/DNA/RNA residues in this entry.

6.3 Carbohydrates [i](#)

There are no oligosaccharides in this entry.

6.4 Ligands [i](#)

In the following table, the Atoms column lists the number of modelled atoms in the group and the number defined in the chemical component dictionary. The B-factors column lists the minimum, median, 95th percentile and maximum values of B factors of atoms in the group. The column labelled 'Q< 0.9' lists the number of atoms with occupancy less than 0.9.

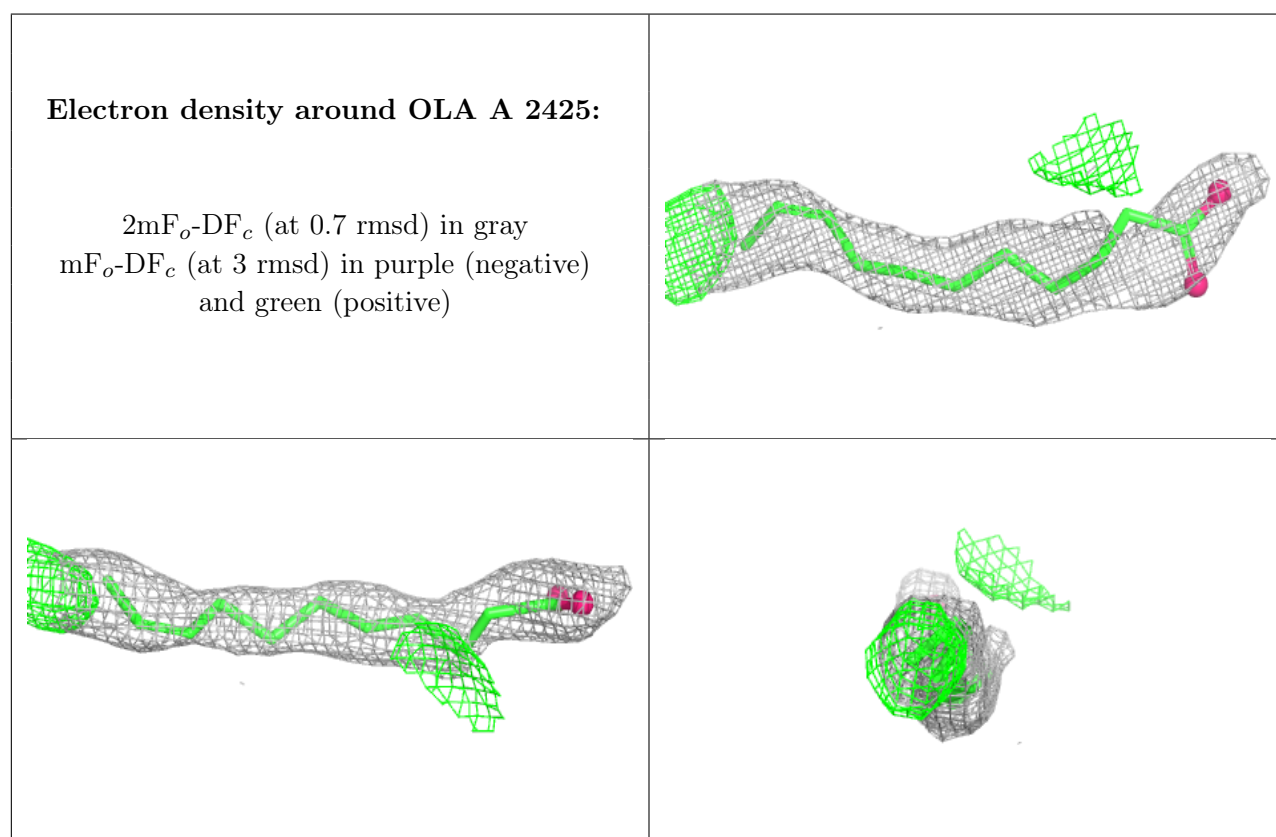
Mol	Type	Chain	Res	Atoms	RSCC	RSR	B-factors(\AA^2)	Q<0.9
5	OLA	A	2425	13/20	0.70	0.18	39,47,70,77	0
5	OLA	A	2416	20/20	0.72	0.22	38,59,66,67	0
5	OLA	A	2426	20/20	0.72	0.22	44,63,72,85	0
5	OLA	A	2419	11/20	0.73	0.22	38,41,57,60	0
5	OLA	A	2412	8/20	0.73	0.18	51,53,54,55	0
5	OLA	A	2406	10/20	0.73	0.20	52,62,70,88	0
5	OLA	A	2420	12/20	0.74	0.20	45,49,54,54	0
5	OLA	A	2421	9/20	0.74	0.25	39,52,69,77	0
6	OLC	A	2428	17/25	0.76	0.19	49,62,75,82	0
8	DMS	A	2435[S]	4/4	0.76	0.23	43,46,53,68	4
5	OLA	A	2414	11/20	0.77	0.15	39,45,63,75	0
5	OLA	A	2423	15/20	0.78	0.21	45,53,78,78	0
5	OLA	A	2408	18/20	0.78	0.17	38,49,65,73	0
5	OLA	A	2413	15/20	0.78	0.19	53,57,65,68	0
5	OLA	A	2418	10/20	0.78	0.22	46,58,63,64	0
6	OLC	A	2431	23/25	0.78	0.18	36,45,69,84	0
5	OLA	A	2422	8/20	0.78	0.22	44,50,53,56	0
5	OLA	A	2409	20/20	0.79	0.20	41,51,65,66	0
5	OLA	A	2415	19/20	0.79	0.20	47,53,62,67	0
9	PEG	A	2436	7/7	0.79	0.18	45,52,57,65	0
7	A1CQK	A	2434	21/21	0.80	0.17	32,44,58,61	21
6	OLC	A	2429	23/25	0.80	0.19	40,47,66,72	0
5	OLA	A	2424	15/20	0.80	0.19	40,44,52,53	0
5	OLA	A	2410	20/20	0.81	0.18	50,57,79,82	0
5	OLA	A	2417	12/20	0.81	0.16	36,43,52,57	0
6	OLC	A	2432	18/25	0.81	0.18	41,50,71,85	0
6	OLC	A	2433	16/25	0.83	0.16	34,43,56,58	0
3	TEP	A	2401	13/13	0.85	0.10	22,26,27,27	0
5	OLA	A	2407	9/20	0.85	0.16	35,37,63,67	0
5	OLA	A	2411	12/20	0.86	0.15	32,52,63,63	0
5	OLA	A	2405	20/20	0.87	0.16	38,50,57,57	0
6	OLC	A	2427	16/25	0.88	0.15	34,42,54,59	0

Continued on next page...

Continued from previous page...

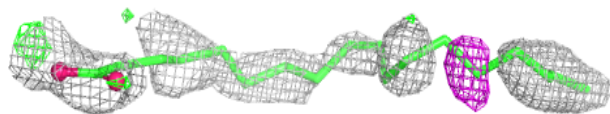
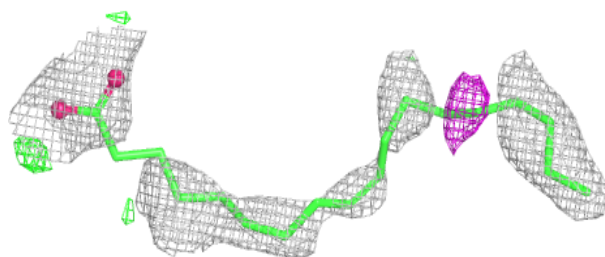
Mol	Type	Chain	Res	Atoms	RSCC	RSR	B-factors(\AA^2)	Q<0.9
6	OLC	A	2430	23/25	0.90	0.14	33,47,61,63	0
4	CLR	A	2404	28/28	0.93	0.09	24,29,47,52	0
4	CLR	A	2402	28/28	0.93	0.10	26,31,50,60	0
4	CLR	A	2403	28/28	0.93	0.10	31,35,42,48	0
2	NA	A	2400	1/1	0.95	0.13	28,28,28,28	0

The following is a graphical depiction of the model fit to experimental electron density of all instances of the Ligand of Interest. In addition, ligands with molecular weight > 250 and outliers as shown on the geometry validation Tables will also be included. Each fit is shown from different orientation to approximate a three-dimensional view.

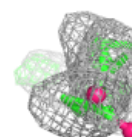
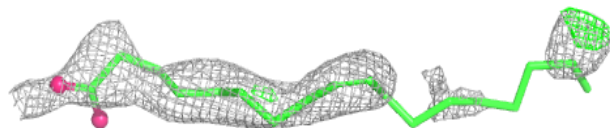


Electron density around OLA A 2416:

$2mF_o-DF_c$ (at 0.7 rmsd) in gray
 mF_o-DF_c (at 3 rmsd) in purple (negative)
and green (positive)

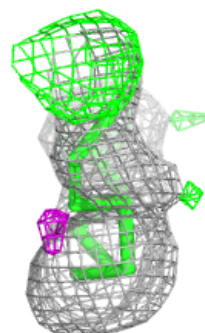
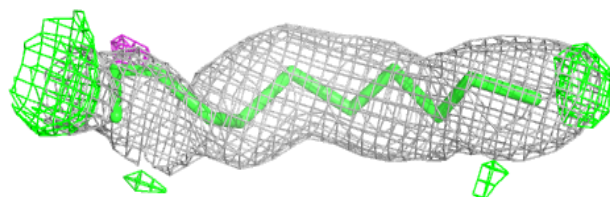
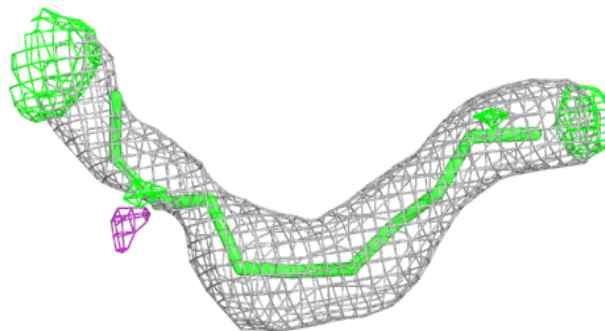
**Electron density around OLA A 2426:**

$2mF_o-DF_c$ (at 0.7 rmsd) in gray
 mF_o-DF_c (at 3 rmsd) in purple (negative)
and green (positive)

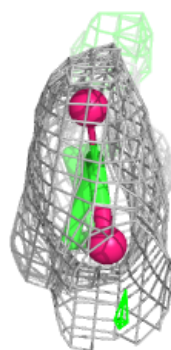
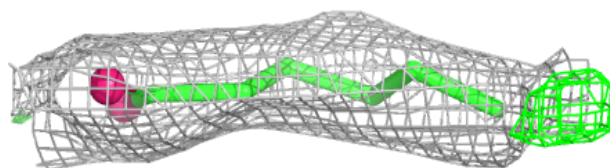
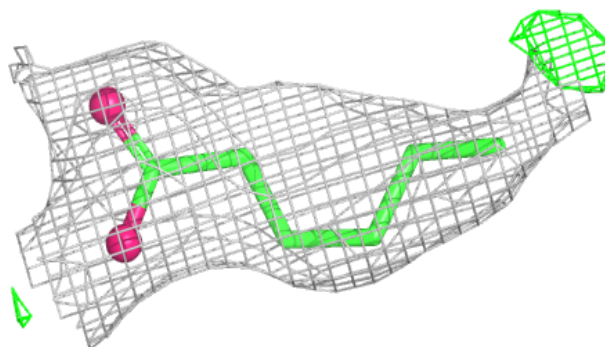


Electron density around OLA A 2419:

$2mF_o-DF_c$ (at 0.7 rmsd) in gray
 mF_o-DF_c (at 3 rmsd) in purple (negative)
and green (positive)

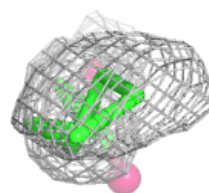
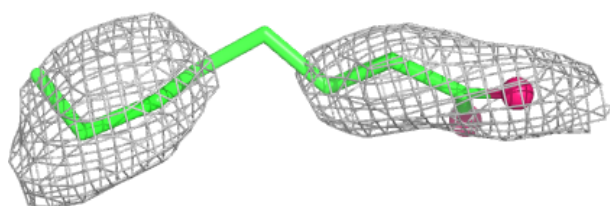
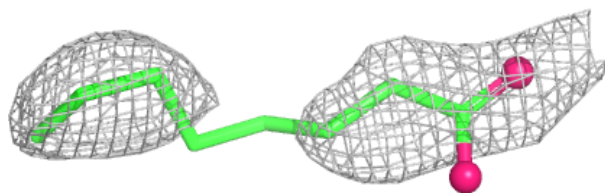
**Electron density around OLA A 2412:**

$2mF_o-DF_c$ (at 0.7 rmsd) in gray
 mF_o-DF_c (at 3 rmsd) in purple (negative)
and green (positive)

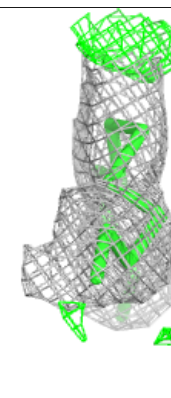
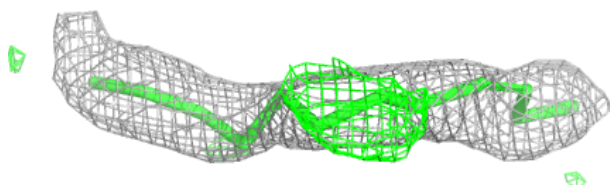
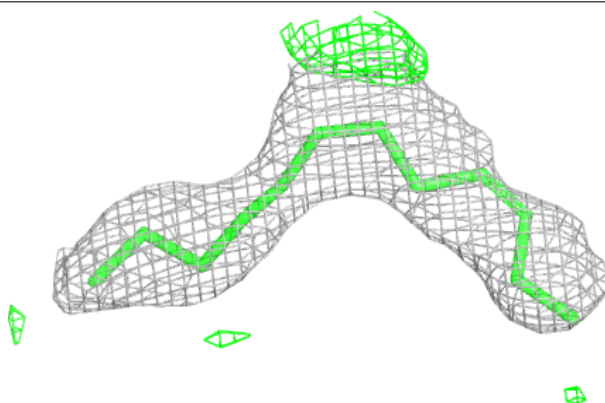


Electron density around OLA A 2406:

$2mF_o-DF_c$ (at 0.7 rmsd) in gray
 mF_o-DF_c (at 3 rmsd) in purple (negative)
and green (positive)

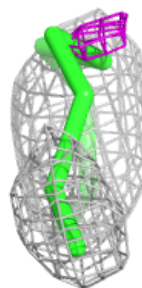
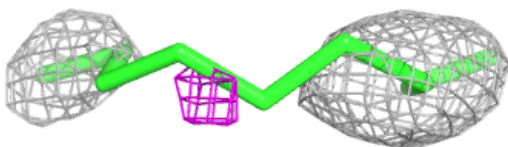
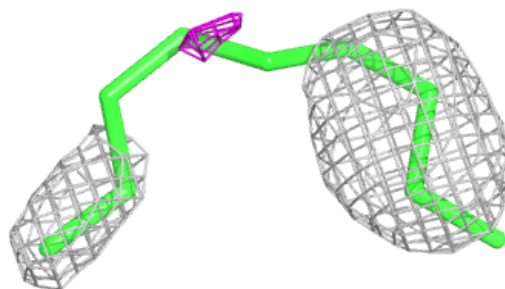
**Electron density around OLA A 2420:**

$2mF_o-DF_c$ (at 0.7 rmsd) in gray
 mF_o-DF_c (at 3 rmsd) in purple (negative)
and green (positive)

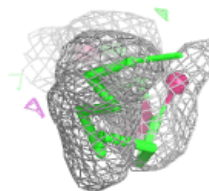
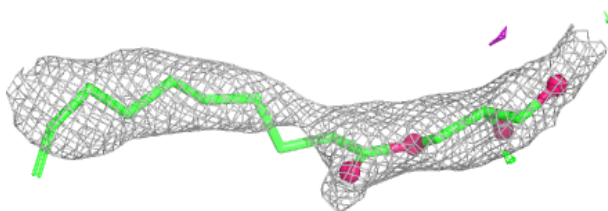
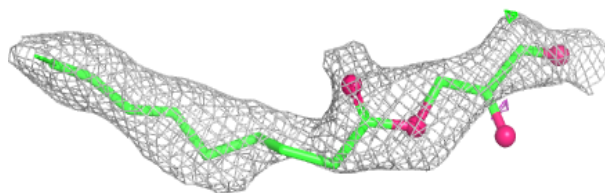


Electron density around OLA A 2421:

$2mF_o-DF_c$ (at 0.7 rmsd) in gray
 mF_o-DF_c (at 3 rmsd) in purple (negative)
and green (positive)

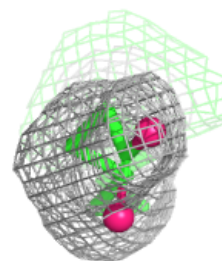
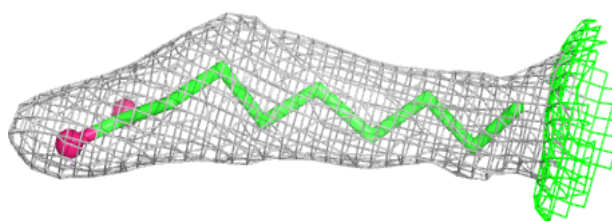
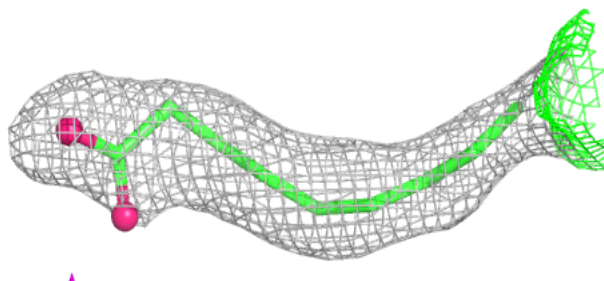
**Electron density around OLC A 2428:**

$2mF_o-DF_c$ (at 0.7 rmsd) in gray
 mF_o-DF_c (at 3 rmsd) in purple (negative)
and green (positive)

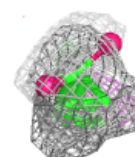
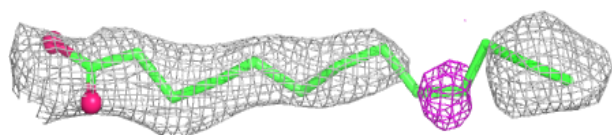
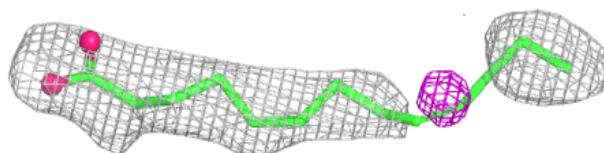


Electron density around OLA A 2414:

$2mF_o-DF_c$ (at 0.7 rmsd) in gray
 mF_o-DF_c (at 3 rmsd) in purple (negative)
and green (positive)

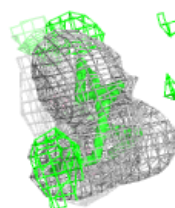
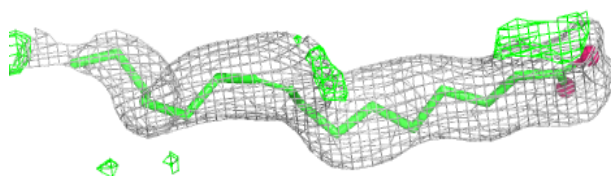
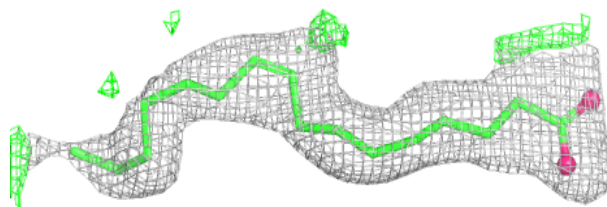
**Electron density around OLA A 2423:**

$2mF_o-DF_c$ (at 0.7 rmsd) in gray
 mF_o-DF_c (at 3 rmsd) in purple (negative)
and green (positive)

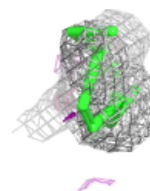
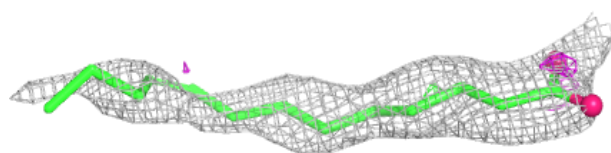
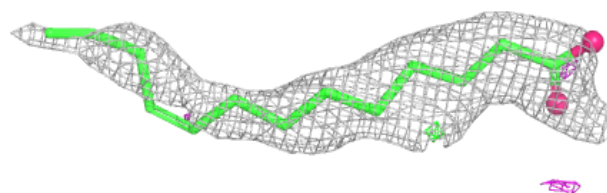


Electron density around OLA A 2408:

$2mF_o-DF_c$ (at 0.7 rmsd) in gray
 mF_o-DF_c (at 3 rmsd) in purple (negative)
and green (positive)

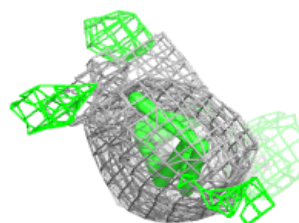
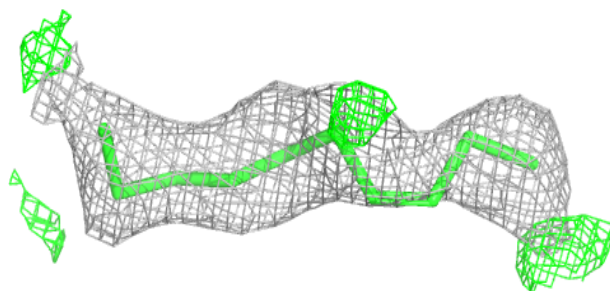
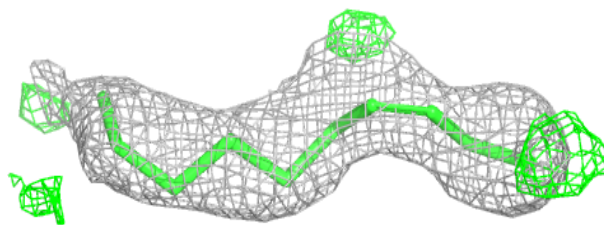
**Electron density around OLA A 2413:**

$2mF_o-DF_c$ (at 0.7 rmsd) in gray
 mF_o-DF_c (at 3 rmsd) in purple (negative)
and green (positive)

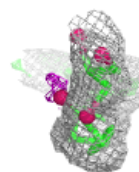
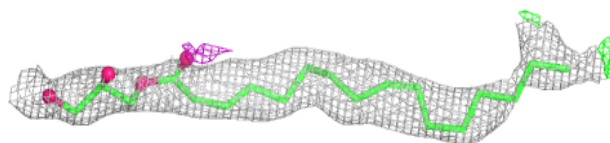
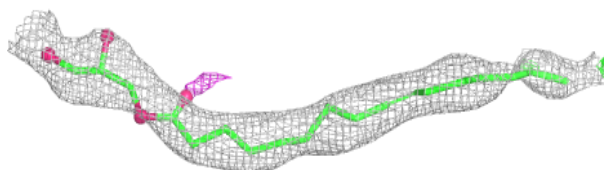


Electron density around OLA A 2418:

$2mF_o-DF_c$ (at 0.7 rmsd) in gray
 mF_o-DF_c (at 3 rmsd) in purple (negative)
and green (positive)

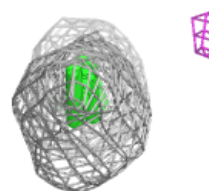
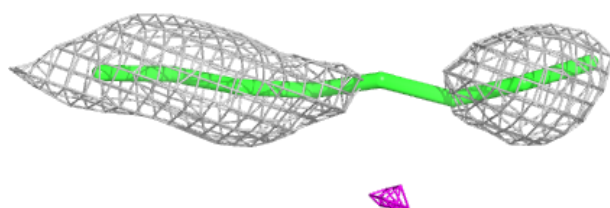
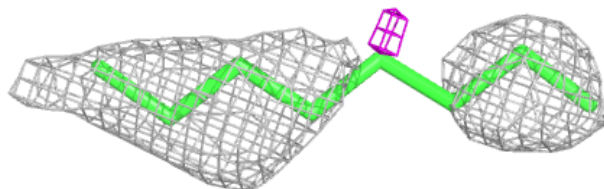
**Electron density around OLC A 2431:**

$2mF_o-DF_c$ (at 0.7 rmsd) in gray
 mF_o-DF_c (at 3 rmsd) in purple (negative)
and green (positive)

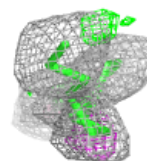
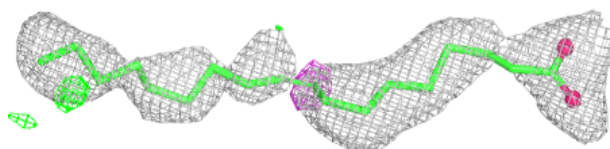
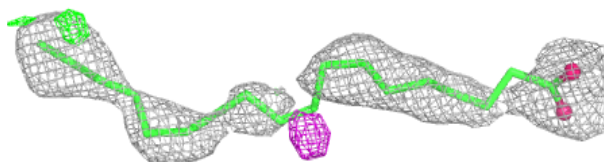


Electron density around OLA A 2422:

$2mF_o-DF_c$ (at 0.7 rmsd) in gray
 mF_o-DF_c (at 3 rmsd) in purple (negative)
and green (positive)

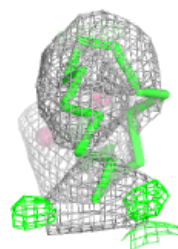
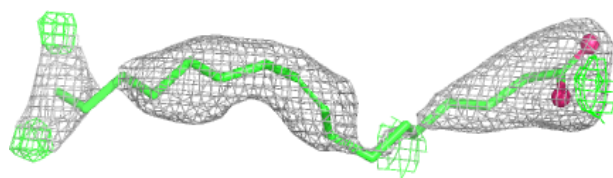
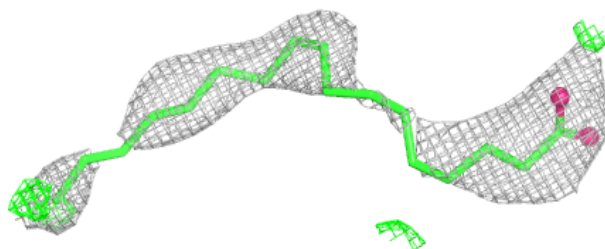
**Electron density around OLA A 2409:**

$2mF_o-DF_c$ (at 0.7 rmsd) in gray
 mF_o-DF_c (at 3 rmsd) in purple (negative)
and green (positive)

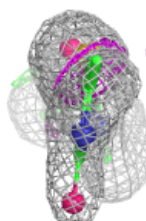
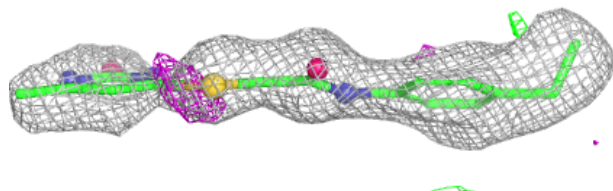
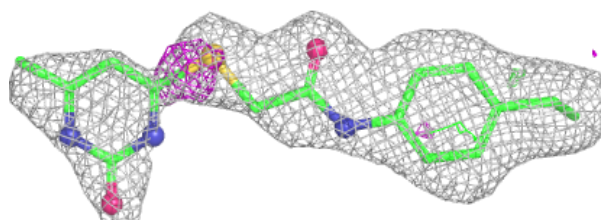


Electron density around OLA A 2415:

$2mF_o-DF_c$ (at 0.7 rmsd) in gray
 mF_o-DF_c (at 3 rmsd) in purple (negative)
and green (positive)

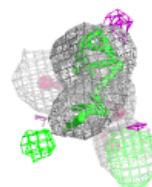
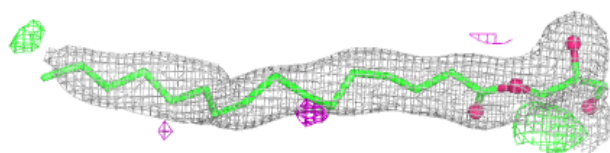
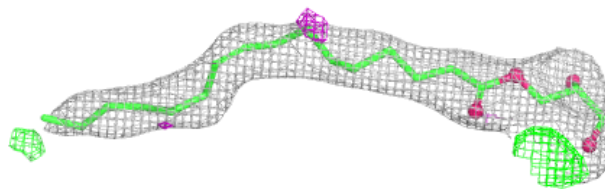
**Electron density around A1CQK A 2434:**

$2mF_o-DF_c$ (at 0.7 rmsd) in gray
 mF_o-DF_c (at 3 rmsd) in purple (negative)
and green (positive)

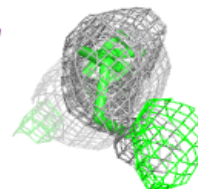
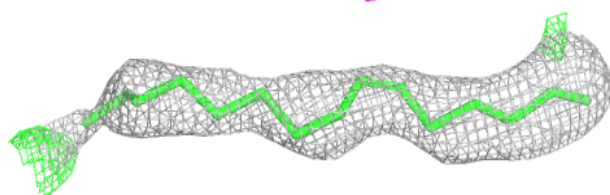
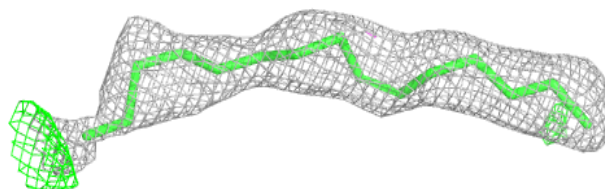


Electron density around OLC A 2429:

$2mF_o-DF_c$ (at 0.7 rmsd) in gray
 mF_o-DF_c (at 3 rmsd) in purple (negative)
and green (positive)

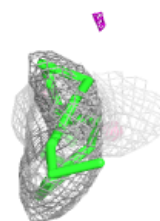
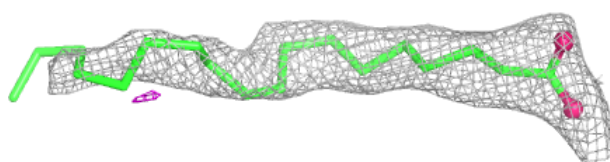
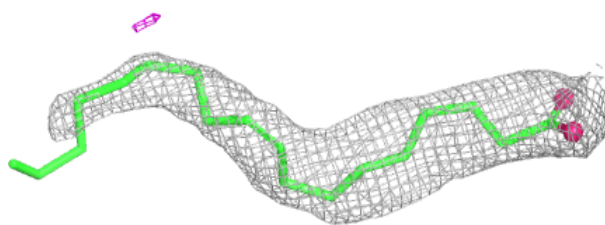
**Electron density around OLA A 2424:**

$2mF_o-DF_c$ (at 0.7 rmsd) in gray
 mF_o-DF_c (at 3 rmsd) in purple (negative)
and green (positive)

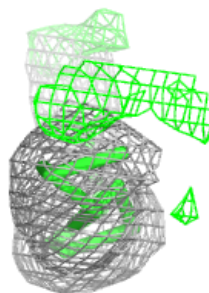
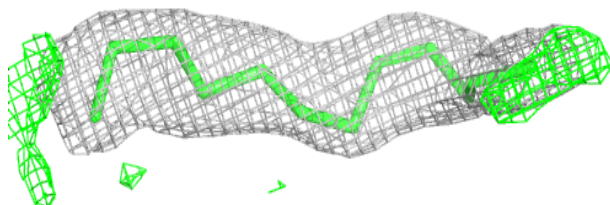
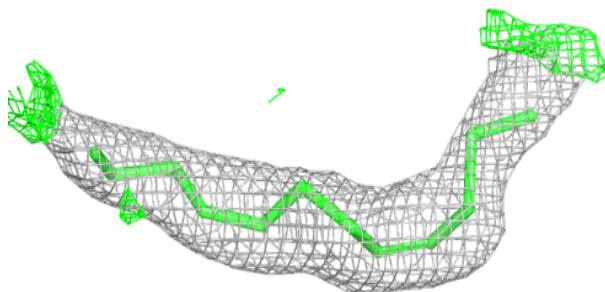


Electron density around OLA A 2410:

$2mF_o-DF_c$ (at 0.7 rmsd) in gray
 mF_o-DF_c (at 3 rmsd) in purple (negative)
and green (positive)

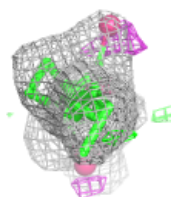
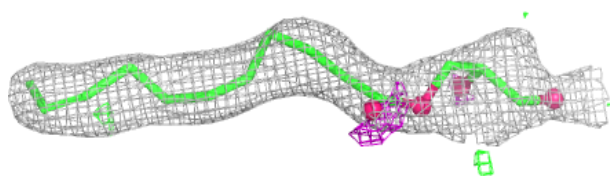
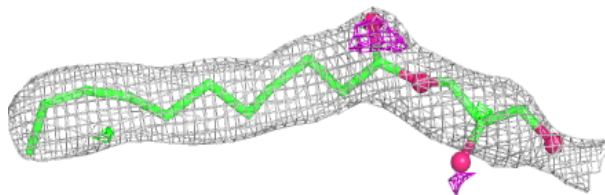
**Electron density around OLA A 2417:**

$2mF_o-DF_c$ (at 0.7 rmsd) in gray
 mF_o-DF_c (at 3 rmsd) in purple (negative)
and green (positive)

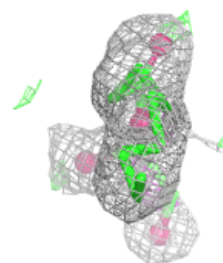
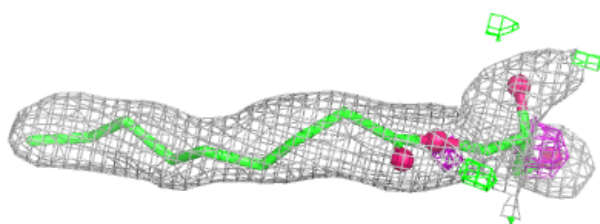
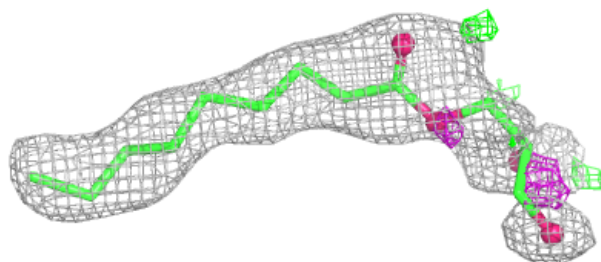


Electron density around OLC A 2432:

$2mF_o-DF_c$ (at 0.7 rmsd) in gray
 mF_o-DF_c (at 3 rmsd) in purple (negative)
and green (positive)

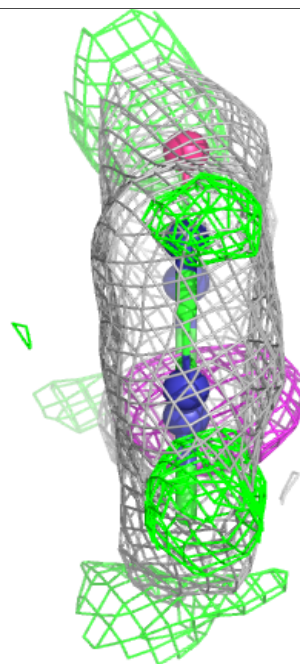
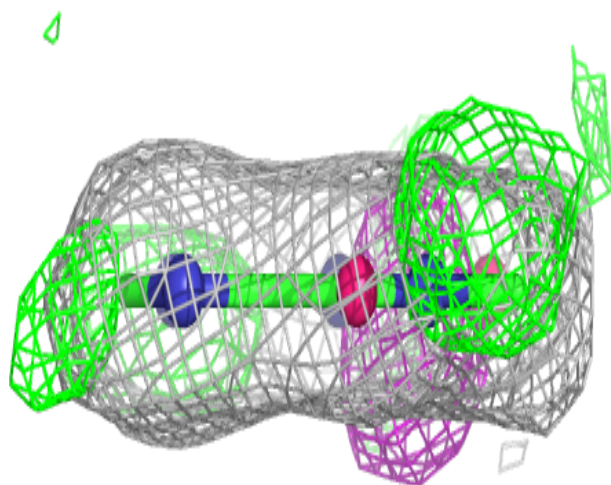
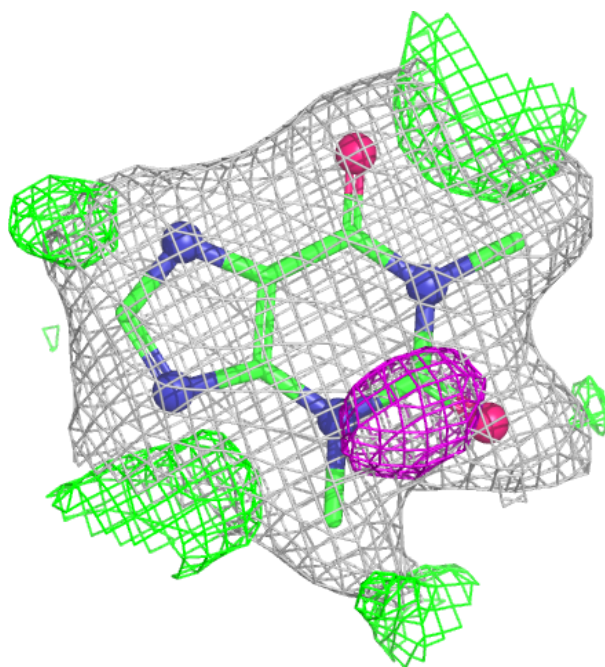
**Electron density around OLC A 2433:**

$2mF_o-DF_c$ (at 0.7 rmsd) in gray
 mF_o-DF_c (at 3 rmsd) in purple (negative)
and green (positive)



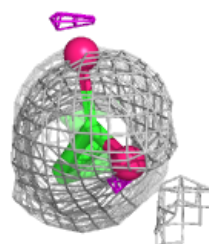
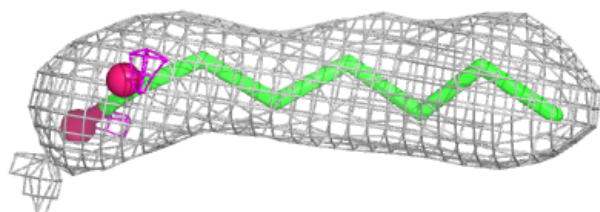
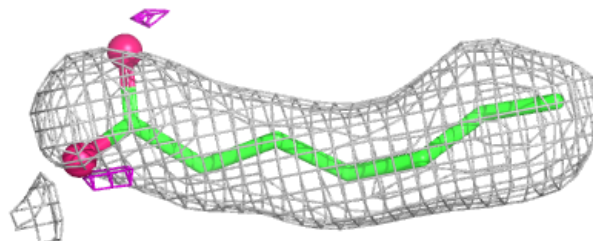
Electron density around TEP A 2401:

$2mF_o-DF_c$ (at 0.7 rmsd) in gray
 mF_o-DF_c (at 3 rmsd) in purple (negative)
and green (positive)

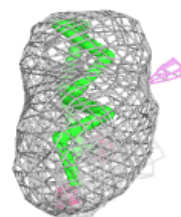
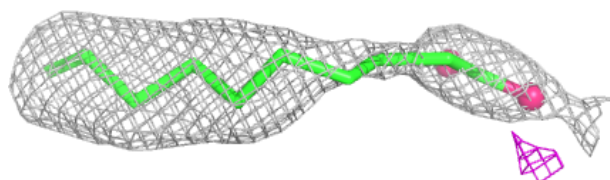
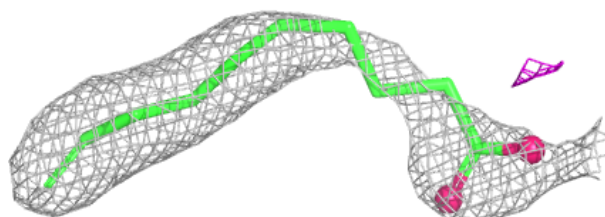


Electron density around OLA A 2407:

$2mF_o-DF_c$ (at 0.7 rmsd) in gray
 mF_o-DF_c (at 3 rmsd) in purple (negative)
and green (positive)

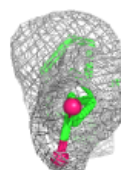
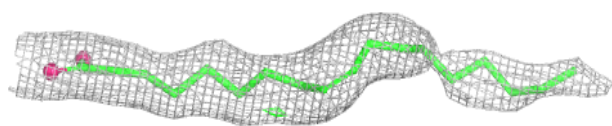
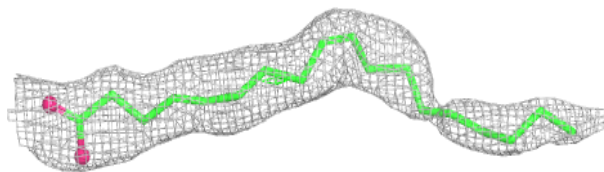
**Electron density around OLA A 2411:**

$2mF_o-DF_c$ (at 0.7 rmsd) in gray
 mF_o-DF_c (at 3 rmsd) in purple (negative)
and green (positive)

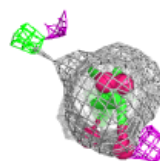
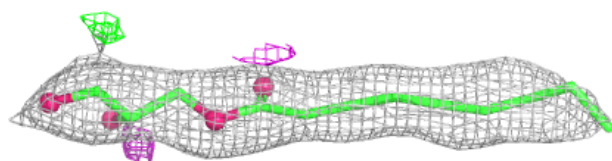
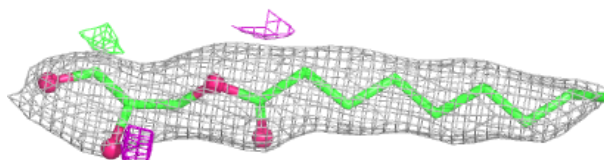


Electron density around OLA A 2405:

$2mF_o-DF_c$ (at 0.7 rmsd) in gray
 mF_o-DF_c (at 3 rmsd) in purple (negative)
and green (positive)

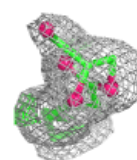
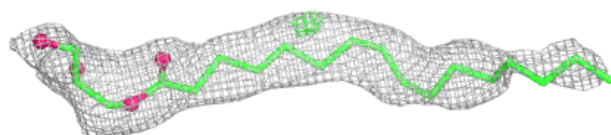
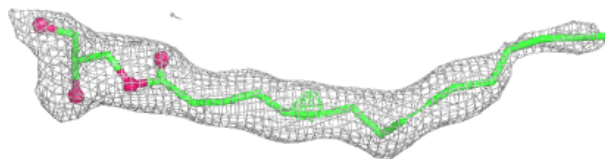
**Electron density around OLC A 2427:**

$2mF_o-DF_c$ (at 0.7 rmsd) in gray
 mF_o-DF_c (at 3 rmsd) in purple (negative)
and green (positive)

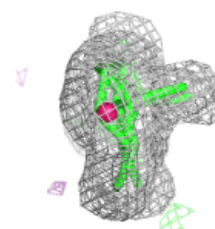
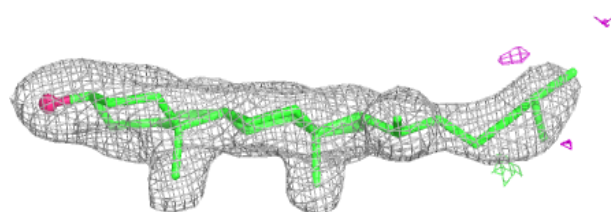
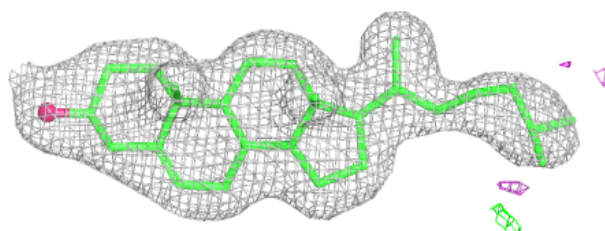


Electron density around OLC A 2430:

$2mF_o-DF_c$ (at 0.7 rmsd) in gray
 mF_o-DF_c (at 3 rmsd) in purple (negative)
and green (positive)

**Electron density around CLR A 2404:**

$2mF_o-DF_c$ (at 0.7 rmsd) in gray
 mF_o-DF_c (at 3 rmsd) in purple (negative)
and green (positive)



6.5 Other polymers [i](#)

There are no such residues in this entry.