



Full wwPDB NMR Structure Validation Report ⓘ

Dec 24, 2024 – 01:41 PM EST

PDB ID : 2KPP
BMRB ID : 16563
Title : Solution NMR structure of Lin0431 protein from *Listeria innocua*. Northeast Structural Genomics Consortium Target LkR112
Authors : Tang, Y.; Xiao, R.; Ciccocanti, C.; Janjua, H.; Lee, D.Y.; Everett, J.K.; Swapna, G.V.T.; Acton, T.B.; Rost, B.; Montelione, G.T.; Northeast Structural Genomics Consortium (NESG)
Deposited on : 2009-10-18

This is a Full wwPDB NMR Structure Validation Report for a publicly released PDB entry.

We welcome your comments at validation@mail.wwpdb.org

A user guide is available at

<https://www.wwpdb.org/validation/2017/NMRValidationReportHelp>

with specific help available everywhere you see the ⓘ symbol.

The types of validation reports are described at

<http://www.wwpdb.org/validation/2017/FAQs#types>.

The following versions of software and data (see [references ⓘ](#)) were used in the production of this report:

MolProbity : 4.02b-467
Percentile statistics : 20231227.v01 (using entries in the PDB archive December 27th 2023)
wwPDB-RCI : v_1n_11_5_13_A (Berjanski et al., 2005)
PANAV : Wang et al. (2010)
wwPDB-ShiftChecker : v1.2
BMRB Restraints Analysis : v1.2
Ideal geometry (proteins) : Engh & Huber (2001)
Ideal geometry (DNA, RNA) : Parkinson et al. (1996)
Validation Pipeline (wwPDB-VP) : 2.40

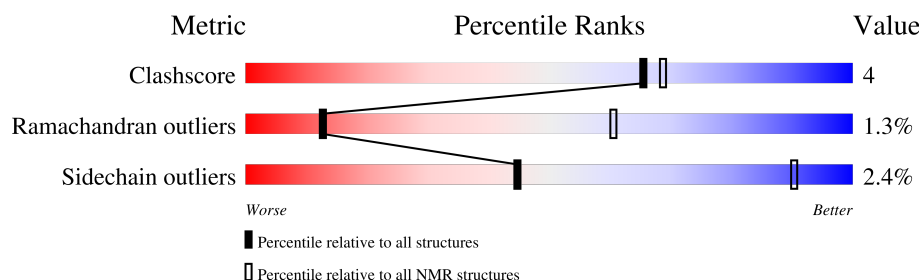
1 Overall quality at a glance

The following experimental techniques were used to determine the structure:

SOLUTION NMR

The overall completeness of chemical shifts assignment is 94%.

Percentile scores (ranging between 0-100) for global validation metrics of the entry are shown in the following graphic. The table shows the number of entries on which the scores are based.



Metric	Whole archive (#Entries)	NMR archive (#Entries)
Clashscore	210492	14027
Ramachandran outliers	207382	12486
Sidechain outliers	206894	12463

The table below summarises the geometric issues observed across the polymeric chains and their fit to the experimental data. The red, orange, yellow and green segments indicate the fraction of residues that contain outliers for ≥ 3 , 2, 1 and 0 types of geometric quality criteria. A cyan segment indicates the fraction of residues that are not part of the well-defined cores, and a grey segment represents the fraction of residues that are not modelled. The numeric value for each fraction is indicated below the corresponding segment, with a dot representing fractions $\leq 5\%$

Mol	Chain	Length	Quality of chain
1	A	114	

2 Ensemble composition and analysis ⓘ

This entry contains 20 models. Model 11 is the overall representative, medoid model (most similar to other models). The authors have identified model 1 as representative, based on the following criterion: *lowest energy*.

The following residues are included in the computation of the global validation metrics.

Well-defined (core) protein residues			
Well-defined core	Residue range (total)	Backbone RMSD (Å)	Medoid model
1	A:7-A:92 (86)	0.62	11

Ill-defined regions of proteins are excluded from the global statistics.

Ligands and non-protein polymers are included in the analysis.

The models can be grouped into 2 clusters. No single-model clusters were found.

Cluster number	Models
1	2, 3, 4, 6, 8, 9, 10, 11, 12, 13, 14, 15, 16, 17, 18, 19, 20
2	1, 5, 7

3 Entry composition

There is only 1 type of molecule in this entry. The entry contains 1803 atoms, of which 905 are hydrogens and 0 are deuteriums.

- Molecule 1 is a protein called Lin0431 protein.

Mol	Chain	Residues	Atoms						Trace
1	A	114	Total	C	H	N	O	S	0
			1803	558	905	164	172	4	

There are 9 discrepancies between the modelled and reference sequences:

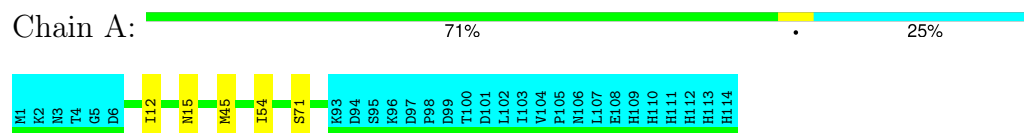
Chain	Residue	Modelled	Actual	Comment	Reference
A	1	MET	-	initiating methionine	UNP Q92EM7
A	107	LEU	-	expression tag	UNP Q92EM7
A	108	GLU	-	expression tag	UNP Q92EM7
A	109	HIS	-	expression tag	UNP Q92EM7
A	110	HIS	-	expression tag	UNP Q92EM7
A	111	HIS	-	expression tag	UNP Q92EM7
A	112	HIS	-	expression tag	UNP Q92EM7
A	113	HIS	-	expression tag	UNP Q92EM7
A	114	HIS	-	expression tag	UNP Q92EM7

4 Residue-property plots [i](#)

4.1 Average score per residue in the NMR ensemble

These plots are provided for all protein, RNA, DNA and oligosaccharide chains in the entry. The first graphic is the same as shown in the summary in section 1 of this report. The second graphic shows the sequence where residues are colour-coded according to the number of geometric quality criteria for which they contain at least one outlier: green = 0, yellow = 1, orange = 2 and red = 3 or more. Stretches of 2 or more consecutive residues without any outliers are shown as green connectors. Residues which are classified as ill-defined in the NMR ensemble, are shown in cyan with an underline colour-coded according to the previous scheme. Residues which were present in the experimental sample, but not modelled in the final structure are shown in grey.

- Molecule 1: Lin0431 protein

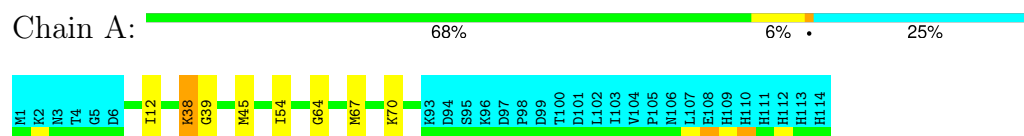


4.2 Scores per residue for each member of the ensemble

Colouring as in section 4.1 above.

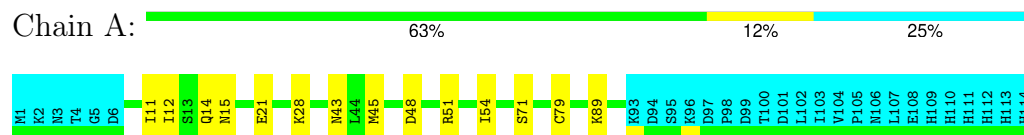
4.2.1 Score per residue for model 1

- Molecule 1: Lin0431 protein



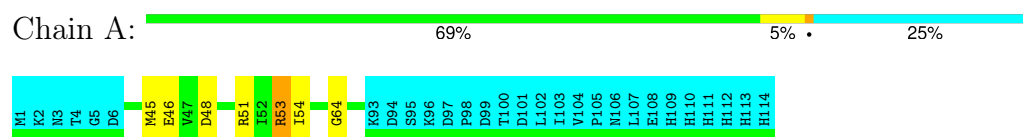
4.2.2 Score per residue for model 2

- Molecule 1: Lin0431 protein



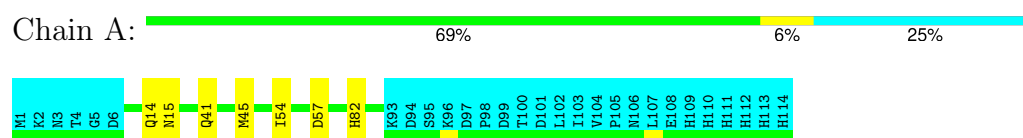
4.2.3 Score per residue for model 3

- Molecule 1: Lin0431 protein



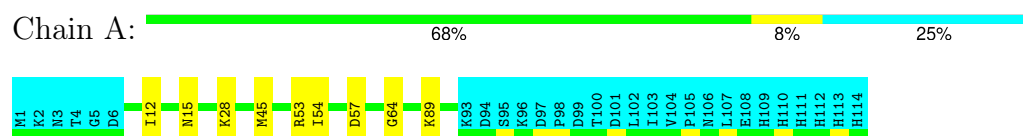
4.2.4 Score per residue for model 4

- Molecule 1: Lin0431 protein



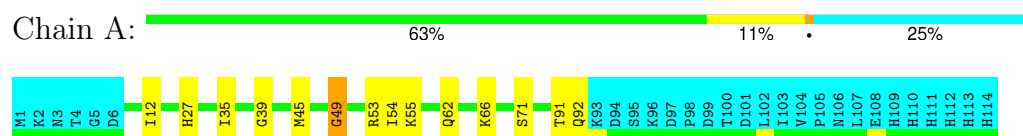
4.2.5 Score per residue for model 5

- Molecule 1: Lin0431 protein



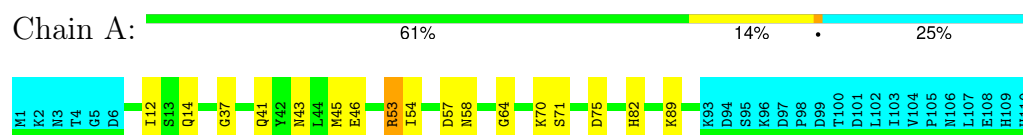
4.2.6 Score per residue for model 6

- Molecule 1: Lin0431 protein



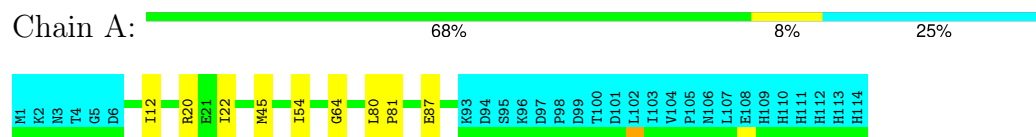
4.2.7 Score per residue for model 7

- Molecule 1: Lin0431 protein



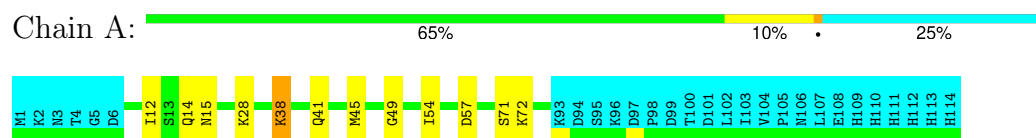
4.2.8 Score per residue for model 8

- Molecule 1: Lin0431 protein



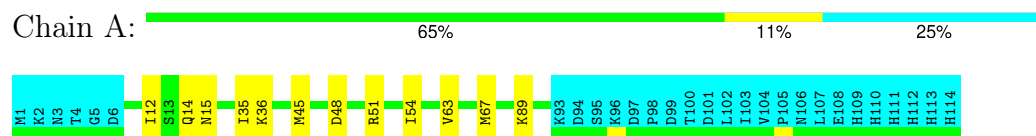
4.2.9 Score per residue for model 9

- Molecule 1: Lin0431 protein



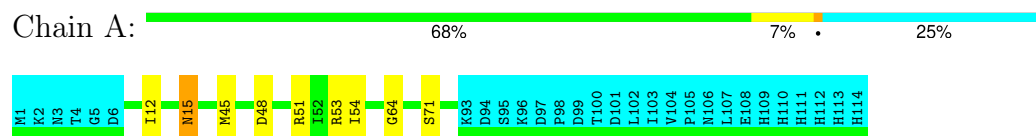
4.2.10 Score per residue for model 10

- Molecule 1: Lin0431 protein



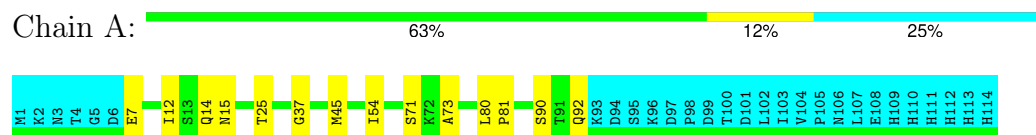
4.2.11 Score per residue for model 11 (medoid)

- Molecule 1: Lin0431 protein



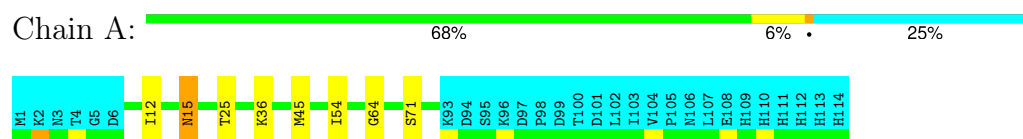
4.2.12 Score per residue for model 12

- Molecule 1: Lin0431 protein



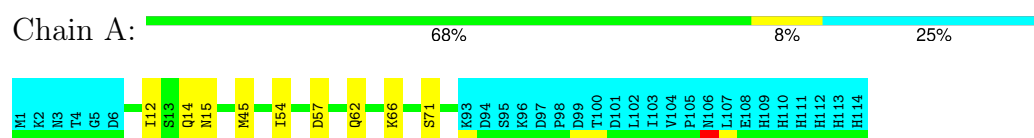
4.2.13 Score per residue for model 13

- Molecule 1: Lin0431 protein



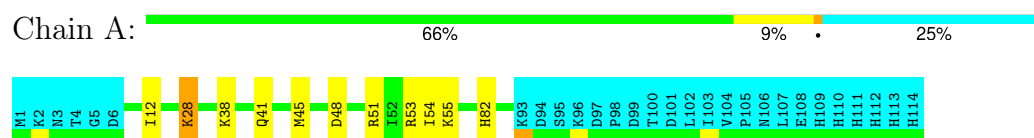
4.2.14 Score per residue for model 14

- Molecule 1: Lin0431 protein



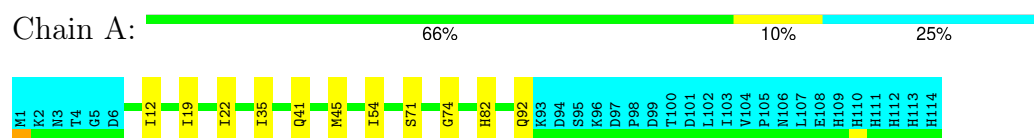
4.2.15 Score per residue for model 15

- Molecule 1: Lin0431 protein



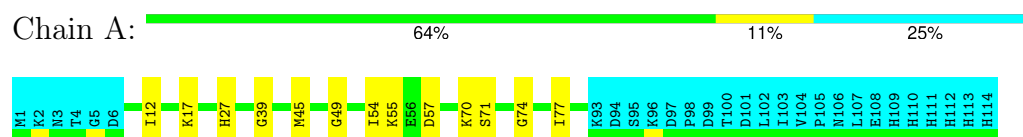
4.2.16 Score per residue for model 16

- Molecule 1: Lin0431 protein



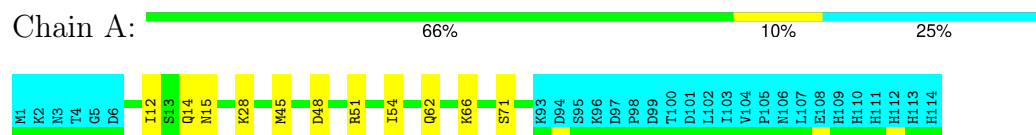
4.2.17 Score per residue for model 17

- Molecule 1: Lin0431 protein



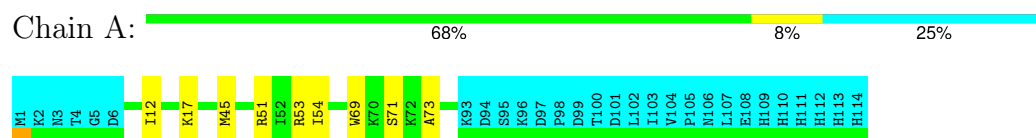
4.2.18 Score per residue for model 18

- Molecule 1: Lin0431 protein



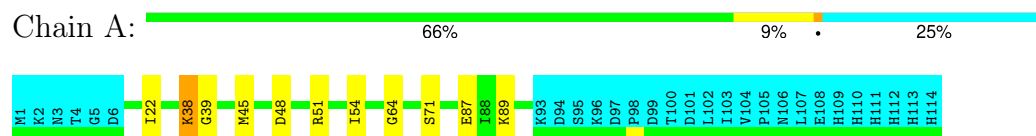
4.2.19 Score per residue for model 19

- Molecule 1: Lin0431 protein



4.2.20 Score per residue for model 20

- Molecule 1: Lin0431 protein



5 Refinement protocol and experimental data overview

The models were refined using the following method: *simulated annealing*.

Of the 100 calculated structures, 20 were deposited, based on the following criterion: *structures with the lowest energy*.

The following table shows the software used for structure solution, optimisation and refinement.

Software name	Classification	Version
AutoStructure	structure solution	2.2.1
CYANA	structure solution	3.0
CNS	refinement	1.1

The following table shows chemical shift validation statistics as aggregates over all chemical shift files. Detailed validation can be found in section 7 of this report.

Chemical shift file(s)	working_cs.cif
Number of chemical shift lists	1
Total number of shifts	1372
Number of shifts mapped to atoms	1372
Number of unparsed shifts	0
Number of shifts with mapping errors	0
Number of shifts with mapping warnings	0
Assignment completeness (well-defined parts)	94%

6 Model quality

6.1 Standard geometry

There are no covalent bond-length or bond-angle outliers.

There are no bond-length outliers.

There are no bond-angle outliers.

There are no chirality outliers.

There are no planarity outliers.

6.2 Too-close contacts

In the following table, the Non-H and H(model) columns list the number of non-hydrogen atoms and hydrogen atoms in each chain respectively. The H(added) column lists the number of hydrogen atoms added and optimized by MolProbity. The Clashes column lists the number of clashes averaged over the ensemble.

Mol	Chain	Non-H	H(model)	H(added)	Clashes
1	A	668	691	689	5±1
All	All	13360	13820	13780	102

The all-atom clashscore is defined as the number of clashes found per 1000 atoms (including hydrogen atoms). The all-atom clashscore for this structure is 4.

All unique clashes are listed below, sorted by their clash magnitude.

Atom-1	Atom-2	Clash(Å)	Distance(Å)	Models	
				Worst	Total
1:A:45:MET:SD	1:A:54:ILE:HG12	0.70	2.26	11	20
1:A:70:LYS:HD3	1:A:75:ASP:HB3	0.62	1.71	7	1
1:A:46:GLU:HB3	1:A:53:ARG:HH21	0.61	1.55	3	1
1:A:72:LYS:HA	1:A:72:LYS:HE2	0.59	1.74	9	1
1:A:14:GLN:NE2	1:A:37:GLY:HA2	0.53	2.18	12	2
1:A:67:MET:SD	1:A:70:LYS:NZ	0.52	2.74	1	1
1:A:46:GLU:HB3	1:A:53:ARG:NH1	0.51	2.20	7	1
1:A:48:ASP:O	1:A:51:ARG:HG2	0.51	2.06	3	7
1:A:14:GLN:HG2	1:A:15:ASN:ND2	0.49	2.22	4	7
1:A:36:LYS:NZ	1:A:36:LYS:HB2	0.47	2.23	10	1
1:A:70:LYS:HG3	1:A:77:ILE:HD11	0.47	1.85	17	1
1:A:38:LYS:HE2	1:A:41:GLN:HG3	0.46	1.87	9	1
1:A:12:ILE:HD12	1:A:12:ILE:N	0.46	2.25	15	17
1:A:38:LYS:HE3	1:A:38:LYS:HA	0.46	1.85	20	1

Continued on next page...

Continued from previous page...

Atom-1	Atom-2	Clash(Å)	Distance(Å)	Models	
				Worst	Total
1:A:54:ILE:HD12	1:A:64:GLY:HA3	0.46	1.88	3	8
1:A:63:VAL:O	1:A:67:MET:HG3	0.46	2.10	10	1
1:A:35:ILE:HD12	1:A:35:ILE:N	0.46	2.26	6	2
1:A:41:GLN:HA	1:A:58:ASN:HB3	0.45	1.89	7	1
1:A:28:LYS:NZ	1:A:28:LYS:HB2	0.45	2.26	15	1
1:A:41:GLN:HB3	1:A:82:HIS:CD2	0.45	2.47	4	2
1:A:15:ASN:N	1:A:15:ASN:HD22	0.45	2.10	11	2
1:A:19:ILE:HD11	1:A:35:ILE:HD13	0.44	1.90	16	1
1:A:91:THR:HG23	1:A:92:GLN:HG2	0.44	1.89	6	1
1:A:22:ILE:HD12	1:A:22:ILE:N	0.44	2.27	8	2
1:A:43:ASN:ND2	1:A:79:CYS:SG	0.44	2.91	2	1
1:A:53:ARG:NH2	1:A:55:LYS:HE3	0.43	2.28	6	1
1:A:62:GLN:O	1:A:66:LYS:HD3	0.43	2.13	18	3
1:A:11:ILE:HG13	1:A:89:LYS:HD3	0.43	1.90	2	1
1:A:80:LEU:HB2	1:A:81:PRO:HD3	0.42	1.91	8	2
1:A:43:ASN:OD1	1:A:82:HIS:ND1	0.42	2.52	7	1
1:A:7:GLU:HA	1:A:25:THR:HB	0.42	1.90	12	1
1:A:27:HIS:HB3	1:A:49:GLY:O	0.41	2.15	17	1
1:A:41:GLN:HB3	1:A:82:HIS:NE2	0.41	2.30	16	1
1:A:51:ARG:HG3	1:A:69:TRP:CE3	0.41	2.50	19	1
1:A:20:ARG:HG3	1:A:22:ILE:HD11	0.40	1.93	8	1
1:A:38:LYS:HE2	1:A:38:LYS:HA	0.40	1.92	1	1
1:A:55:LYS:NZ	1:A:55:LYS:HB3	0.40	2.32	17	1
1:A:90:SER:OG	1:A:92:GLN:HG2	0.40	2.15	12	1
1:A:27:HIS:O	1:A:49:GLY:HA2	0.40	2.16	6	1
1:A:22:ILE:N	1:A:22:ILE:HD12	0.40	2.32	20	1

6.3 Torsion angles ⓘ

6.3.1 Protein backbone ⓘ

In the following table, the Percentiles column shows the percent Ramachandran outliers of the chain as a percentile score with respect to all PDB entries followed by that with respect to all NMR entries. The Analysed column shows the number of residues for which the backbone conformation was analysed and the total number of residues.

Mol	Chain	Analysed	Favoured	Allowed	Outliers	Percentiles	
1	A	86/114 (75%)	79±2 (92±2%)	6±2 (7±2%)	1±1 (1±1%)	13	60
All	All	1720/2280 (75%)	1583 (92%)	114 (7%)	23 (1%)	13	60

All 6 unique Ramachandran outliers are listed below. They are sorted by the frequency of occurrence in the ensemble.

Mol	Chain	Res	Type	Models (Total)
1	A	71	SER	13
1	A	39	GLY	4
1	A	49	GLY	2
1	A	73	ALA	2
1	A	74	GLY	1
1	A	92	GLN	1

6.3.2 Protein sidechains [i](#)

In the following table, the Percentiles column shows the percent sidechain outliers of the chain as a percentile score with respect to all PDB entries followed by that with respect to all NMR entries. The Analysed column shows the number of residues for which the sidechain conformation was analysed and the total number of residues.

Mol	Chain	Analysed	Rotameric	Outliers	Percentiles	
1	A	74/101 (73%)	72±1 (98±2%)	2±1 (2±2%)	45	90
All	All	1480/2020 (73%)	1445 (98%)	35 (2%)	45	90

All 11 unique residues with a non-rotameric sidechain are listed below. They are sorted by the frequency of occurrence in the ensemble.

Mol	Chain	Res	Type	Models (Total)
1	A	53	ARG	6
1	A	57	ASP	6
1	A	28	LYS	5
1	A	38	LYS	4
1	A	89	LYS	4
1	A	15	ASN	3
1	A	87	GLU	2
1	A	17	LYS	2
1	A	21	GLU	1
1	A	36	LYS	1
1	A	55	LYS	1

6.3.3 RNA [i](#)

There are no RNA molecules in this entry.

6.4 Non-standard residues in protein, DNA, RNA chains [i](#)

There are no non-standard protein/DNA/RNA residues in this entry.

6.5 Carbohydrates [i](#)

There are no oligosaccharides in this entry.

6.6 Ligand geometry [i](#)

There are no ligands in this entry.

6.7 Other polymers [i](#)

There are no such molecules in this entry.

6.8 Polymer linkage issues [i](#)

There are no chain breaks in this entry.

7 Chemical shift validation

The completeness of assignment taking into account all chemical shift lists is 94% for the well-defined parts and 88% for the entire structure.

7.1 Chemical shift list 1

File name: working_cs.cif

Chemical shift list name: *assigned_chem_shift_list_1*

7.1.1 Bookkeeping

The following table shows the results of parsing the chemical shift list and reports the number of nuclei with statistically unusual chemical shifts.

Total number of shifts	1372
Number of shifts mapped to atoms	1372
Number of unparsed shifts	0
Number of shifts with mapping errors	0
Number of shifts with mapping warnings	0
Number of shift outliers (ShiftChecker)	2

7.1.2 Chemical shift referencing

The following table shows the suggested chemical shift referencing corrections.

Nucleus	# values	Correction \pm precision, ppm	Suggested action
$^{13}\text{C}_\alpha$	109	-0.16 ± 0.15	None needed (< 0.5 ppm)
$^{13}\text{C}_\beta$	99	-0.10 ± 0.27	None needed (< 0.5 ppm)
$^{13}\text{C}'$	101	0.11 ± 0.17	None needed (< 0.5 ppm)
^{15}N	102	-0.56 ± 0.43	None needed (imprecise)

7.1.3 Completeness of resonance assignments

The following table shows the completeness of the chemical shift assignments for the well-defined regions of the structure. The overall completeness is 94%, i.e. 1109 atoms were assigned a chemical shift out of a possible 1179. 0 out of 12 assigned methyl groups (LEU and VAL) were assigned stereospecifically.

	Total	^1H	^{13}C	^{15}N
Backbone	427/433 (99%)	177/178 (99%)	168/172 (98%)	82/83 (99%)
Sidechain	634/689 (92%)	430/445 (97%)	192/216 (89%)	12/28 (43%)

Continued on next page...

Continued from previous page...

	Total	¹H	¹³C	¹⁵N
Aromatic	48/57 (84%)	24/28 (86%)	23/24 (96%)	1/5 (20%)
Overall	1109/1179 (94%)	631/651 (97%)	383/412 (93%)	95/116 (82%)

The following table shows the completeness of the chemical shift assignments for the full structure. The overall completeness is 88%, i.e. 1372 atoms were assigned a chemical shift out of a possible 1554. 0 out of 15 assigned methyl groups (LEU and VAL) were assigned stereospecifically.

	Total	¹H	¹³C	¹⁵N
Backbone	533/570 (94%)	221/233 (95%)	210/228 (92%)	102/109 (94%)
Sidechain	791/879 (90%)	536/566 (95%)	241/280 (86%)	14/33 (42%)
Aromatic	48/105 (46%)	24/52 (46%)	23/36 (64%)	1/17 (6%)
Overall	1372/1554 (88%)	781/851 (92%)	474/544 (87%)	117/159 (74%)

7.1.4 Statistically unusual chemical shifts [i](#)

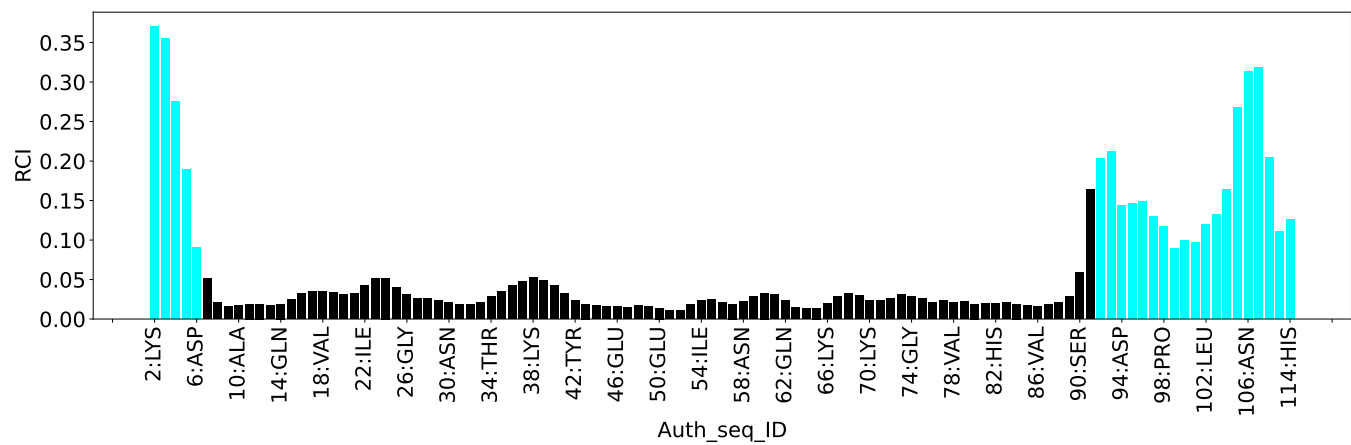
The following table lists the statistically unusual chemical shifts. These are statistical measures, and large deviations from the mean do not necessarily imply incorrect assignments. Molecules containing paramagnetic centres or hemes are expected to give rise to anomalous chemical shifts.

List Id	Chain	Res	Type	Atom	Shift, ppm	Expected range, ppm	Z-score
1	A	53	ARG	HD2	0.10	1.97 – 4.26	-13.2
1	A	41	GLN	HB2	0.12	0.80 – 3.29	-7.8

7.1.5 Random Coil Index (RCI) plots [i](#)

The image below reports *random coil index* values for the protein chains in the structure. The height of each bar gives a probability of a given residue to be disordered, as predicted from the available chemical shifts and the amino acid sequence. A value above 0.2 is an indication of significant predicted disorder. The colour of the bar shows whether the residue is in the well-defined core (black) or in the ill-defined residue ranges (cyan), as described in section 2 on ensemble composition. If well-defined core and ill-defined regions are not identified then it is shown as gray bars.

Random coil index (RCI) for chain A:



8 NMR restraints analysis

8.1 Conformationally restricting restraints

The following table provides the summary of experimentally observed NMR restraints in different categories. Restraints are classified into different categories based on the sequence separation of the atoms involved.

Description	Value
Total distance restraints	2747
Intra-residue ($ i-j =0$)	613
Sequential ($ i-j =1$)	743
Medium range ($ i-j >1$ and $ i-j <5$)	314
Long range ($ i-j \geq 5$)	1021
Inter-chain	0
Hydrogen bond restraints	56
Disulfide bond restraints	0
Total dihedral-angle restraints	94
Number of unmapped restraints	0
Number of restraints per residue	24.9
Number of long range restraints per residue ¹	9.3

¹Long range hydrogen bonds and disulfide bonds are counted as long range restraints while calculating the number of long range restraints per residue

8.2 Residual restraint violations

This section provides the overview of the restraint violations analysis. The violations are binned as small, medium and large violations based on its absolute value. Average number of violations per model is calculated by dividing the total number of violations in each bin by the size of the ensemble.

8.2.1 Average number of distance violations per model

Distance violations less than 0.1 Å are not included in the calculation.

Bins (Å)	Average number of violations per model	Max (Å)
0.1-0.2 (Small)	1.2	0.19
0.2-0.5 (Medium)	0.3	0.38
>0.5 (Large)	10.4	2.51

8.2.2 Average number of dihedral-angle violations per model [i](#)

Dihedral-angle violations less than 1° are not included in the calculation.

Bins (°)	Average number of violations per model	Max (°)
1.0-10.0 (Small)	3.3	4.93
10.0-20.0 (Medium)	None	None
>20.0 (Large)	None	None

9 Distance violation analysis

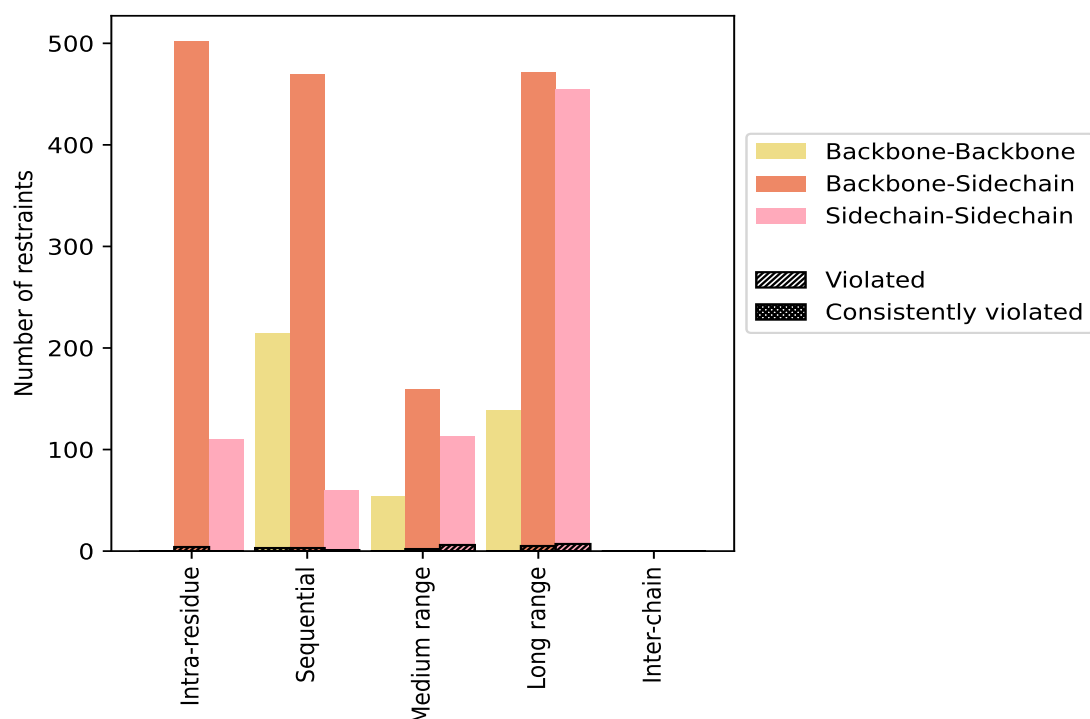
9.1 Summary of distance violations

The following table shows the summary of distance violations in different restraint categories based on the sequence separation of the atoms involved. Each category is further sub-divided into three sub-categories based on the atoms involved. Violations less than 0.1 Å are not included in the statistics.

Restrains type	Count	% ¹	Violated ³			Consistently Violated ⁴		
			Count	% ²	% ¹	Count	% ²	% ¹
Intra-residue ($ i-j =0$)	613	22.3	4	0.7	0.1	0	0.0	0.0
Backbone-Backbone	1	0.0	0	0.0	0.0	0	0.0	0.0
Backbone-Sidechain	502	18.3	4	0.8	0.1	0	0.0	0.0
Sidechain-Sidechain	110	4.0	0	0.0	0.0	0	0.0	0.0
Sequential ($ i-j =1$)	743	27.0	7	0.9	0.3	0	0.0	0.0
Backbone-Backbone	214	7.8	3	1.4	0.1	0	0.0	0.0
Backbone-Sidechain	469	17.1	3	0.6	0.1	0	0.0	0.0
Sidechain-Sidechain	60	2.2	1	1.7	0.0	0	0.0	0.0
Medium range ($ i-j >1$ & $ i-j <5$)	314	11.4	8	2.5	0.3	0	0.0	0.0
Backbone-Backbone	54	2.0	0	0.0	0.0	0	0.0	0.0
Backbone-Sidechain	147	5.4	2	1.4	0.1	0	0.0	0.0
Sidechain-Sidechain	113	4.1	6	5.3	0.2	0	0.0	0.0
Long range ($ i-j \geq 5$)	1021	37.2	12	1.2	0.4	0	0.0	0.0
Backbone-Backbone	139	5.1	0	0.0	0.0	0	0.0	0.0
Backbone-Sidechain	427	15.5	5	1.2	0.2	0	0.0	0.0
Sidechain-Sidechain	455	16.6	7	1.5	0.3	0	0.0	0.0
Inter-chain	0	0.0	0	0.0	0.0	0	0.0	0.0
Backbone-Backbone	0	0.0	0	0.0	0.0	0	0.0	0.0
Backbone-Sidechain	0	0.0	0	0.0	0.0	0	0.0	0.0
Sidechain-Sidechain	0	0.0	0	0.0	0.0	0	0.0	0.0
Hydrogen bond	56	2.0	0	0.0	0.0	0	0.0	0.0
Disulfide bond	0	0.0	0	0.0	0.0	0	0.0	0.0
Total	2747	100.0	31	1.1	1.1	0	0.0	0.0
Backbone-Backbone	408	14.9	3	0.7	0.1	0	0.0	0.0
Backbone-Sidechain	1601	58.3	14	0.9	0.5	0	0.0	0.0
Sidechain-Sidechain	738	26.9	14	1.9	0.5	0	0.0	0.0

¹ percentage calculated with respect to the total number of distance restraints, ² percentage calculated with respect to the number of restraints in a particular restraint category, ³ violated in at least one model, ⁴ violated in all the models

9.1.1 Bar chart : Distribution of distance restraints and violations [i](#)



Violated and consistently violated restraints are shown using different hatch patterns in their respective categories. The hydrogen bonds and disulfied bonds are counted in their appropriate category on the x-axis

9.2 Distance violation statistics for each model [i](#)

The following table provides the distance violation statistics for each model in the ensemble. Violations less than 0.1 Å are not included in the statistics.

Model ID	Number of violations						Mean (Å)	Max (Å)	SD ⁶ (Å)	Median (Å)
	IR ¹	SQ ²	MR ³	LR ⁴	IC ⁵	Total				
1	0	0	0	1	0	1	0.15	0.15	0.0	0.15
2	0	1	7	6	0	14	1.36	2.01	0.63	1.67
3	0	0	7	6	0	13	1.42	2.5	0.61	1.57
4	0	0	6	6	0	12	1.26	2.17	0.55	1.38
5	2	0	7	5	0	14	1.4	2.36	0.73	1.54
6	0	0	7	6	0	13	1.25	2.05	0.58	1.32
7	1	0	7	8	0	16	1.27	2.13	0.76	1.56
8	0	1	7	5	0	13	1.31	2.03	0.54	1.29
9	0	1	0	0	0	1	0.16	0.16	0.0	0.16
10	0	0	7	6	0	13	1.55	2.23	0.58	1.72

Continued on next page...

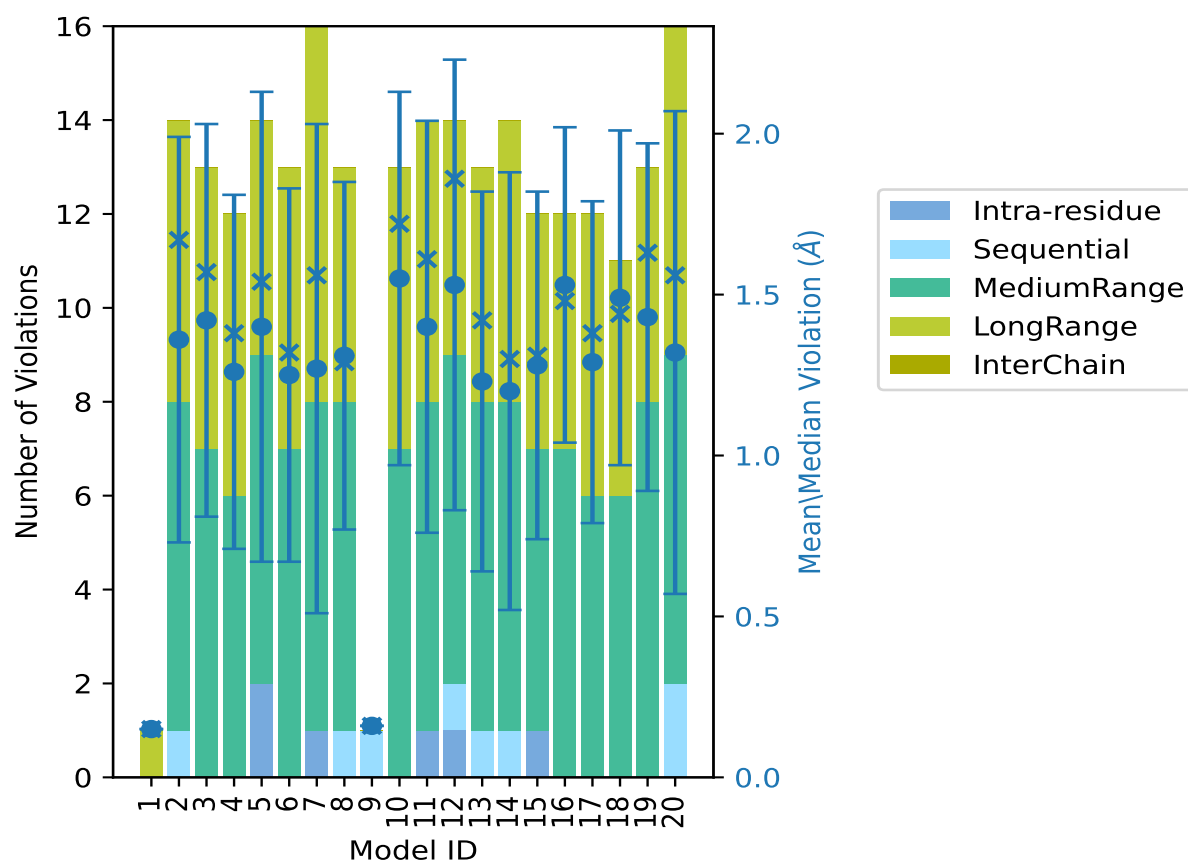
Continued from previous page...

Model ID	Number of violations						Mean (Å)	Max (Å)	SD ⁶ (Å)	Median (Å)
	IR ¹	SQ ²	MR ³	LR ⁴	IC ⁵	Total				
11	1	0	7	6	0	14	1.4	2.06	0.64	1.61
12	1	1	7	5	0	14	1.53	2.26	0.7	1.86
13	0	1	7	5	0	13	1.23	2.22	0.59	1.42
14	0	1	7	6	0	14	1.2	2.47	0.68	1.3
15	1	0	6	5	0	12	1.28	2.15	0.54	1.31
16	0	0	7	5	0	12	1.53	2.51	0.49	1.48
17	0	0	6	6	0	12	1.29	1.88	0.5	1.38
18	0	0	6	5	0	11	1.49	2.41	0.52	1.44
19	0	0	8	5	0	13	1.43	2.03	0.54	1.63
20	0	2	7	7	0	16	1.32	2.41	0.75	1.56

¹Intra-residue restraints, ²Sequential restraints, ³Medium range restraints, ⁴Long range restraints,

⁵Inter-chain restraints, ⁶Standard deviation

9.2.1 Bar graph : Distance Violation statistics for each model ⓘ



The mean(dot),median(x) and the standard deviation are shown in blue with respect to the y axis on the right

9.3 Distance violation statistics for the ensemble

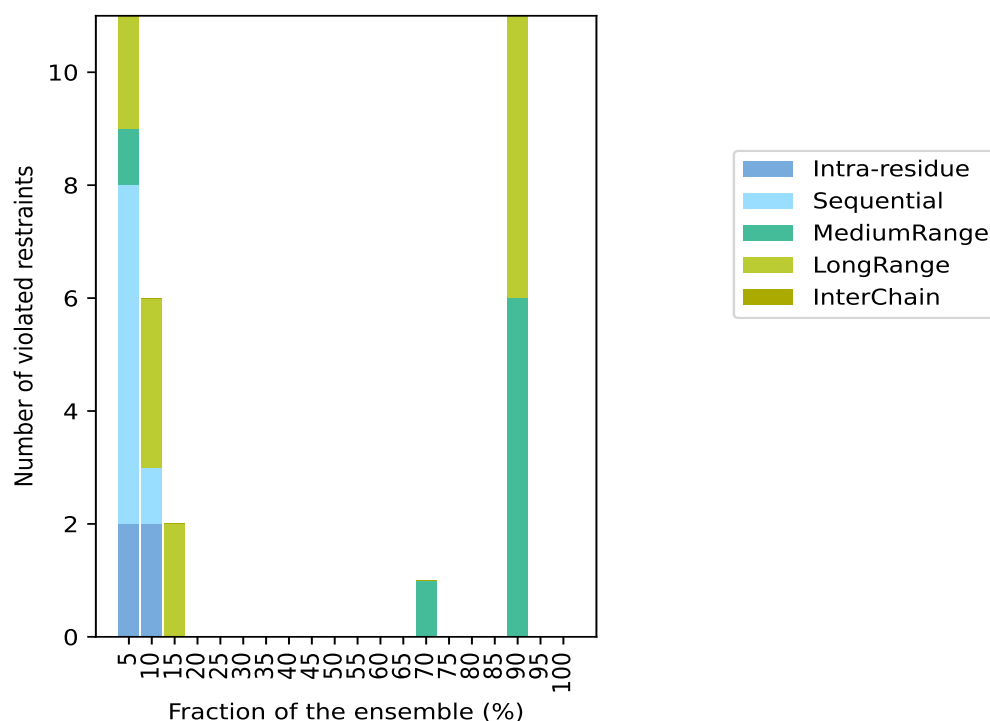
Violation analysis may find that some restraints are violated in few models and some are violated in most of models. The following table provides this information as number of violated restraints for a given fraction of the ensemble. In total, 2660(IR:609, SQ:736, MR:306, LR:1009, IC:0) restraints are not violated in the ensemble.

Number of violated restraints						Fraction of the ensemble	
IR ¹	SQ ²	MR ³	LR ⁴	IC ⁵	Total	Count ⁶	%
2	6	1	2	0	11	1	5.0
2	1	0	3	0	6	2	10.0
0	0	0	2	0	2	3	15.0
0	0	0	0	0	0	4	20.0
0	0	0	0	0	0	5	25.0
0	0	0	0	0	0	6	30.0
0	0	0	0	0	0	7	35.0
0	0	0	0	0	0	8	40.0
0	0	0	0	0	0	9	45.0
0	0	0	0	0	0	10	50.0
0	0	0	0	0	0	11	55.0
0	0	0	0	0	0	12	60.0
0	0	0	0	0	0	13	65.0
0	0	1	0	0	1	14	70.0
0	0	0	0	0	0	15	75.0
0	0	0	0	0	0	16	80.0
0	0	0	0	0	0	17	85.0
0	0	6	5	0	11	18	90.0
0	0	0	0	0	0	19	95.0
0	0	0	0	0	0	20	100.0

¹Intra-residue restraints, ²Sequential restraints, ³Medium range restraints, ⁴Long range restraints,

⁵Inter-chain restraints, ⁶ Number of models with violations

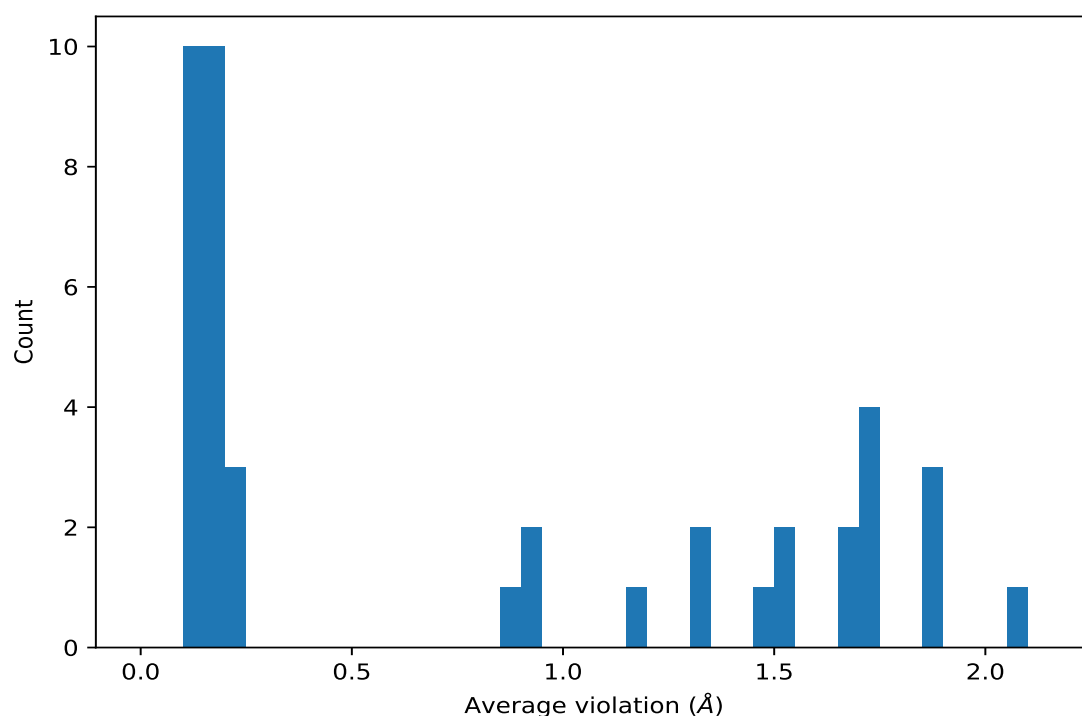
9.3.1 Bar graph : Distance violation statistics for the ensemble [i](#)



9.4 Most violated distance restraints in the ensemble [i](#)

9.4.1 Histogram : Distribution of mean distance violations [i](#)

The following histogram shows the distribution of the average value of the violation. The average is calculated for each restraint that is violated in more than one model over all the violated models in the ensemble



9.4.2 Table: Most violated distance restraints [i](#)

The following table provides the mean and the standard deviation of the violation for each restraint sorted by number of violated models and the mean value. The Key (restraint list ID, restraint ID) is the unique identifier for a given restraint. Rows with same key represent combinatorial or ambiguous restraints and are counted as a single restraint.

Key	Atom-1	Atom-2	Models ¹	Mean (Å)	SD ¹ (Å)	Median (Å)
(1,2103)	1:79:A:CYS:H	1:85:A:PHE:HD2	18	2.07	0.18	2.04
(1,468)	1:78:A:VAL:HG21	1:85:A:PHE:HE2	18	1.85	0.08	1.86
(1,468)	1:78:A:VAL:HG22	1:85:A:PHE:HE2	18	1.85	0.08	1.86
(1,468)	1:78:A:VAL:HG23	1:85:A:PHE:HE2	18	1.85	0.08	1.86
(1,2609)	1:85:A:PHE:HD1	1:87:A:GLU:HB2	18	1.72	0.23	1.72
(1,2609)	1:85:A:PHE:HD1	1:87:A:GLU:HB3	18	1.72	0.23	1.72
(1,47)	1:78:A:VAL:HA	1:85:A:PHE:HD2	18	1.72	0.11	1.72
(1,103)	1:85:A:PHE:HE1	1:87:A:GLU:HB2	18	1.7	0.46	1.75
(1,2610)	1:85:A:PHE:HD1	1:87:A:GLU:HG2	18	1.68	0.34	1.59
(1,2610)	1:85:A:PHE:HD1	1:87:A:GLU:HG3	18	1.68	0.34	1.59
(1,2612)	1:85:A:PHE:HE1	1:87:A:GLU:HG2	18	1.51	0.41	1.48
(1,2612)	1:85:A:PHE:HE1	1:87:A:GLU:HG3	18	1.51	0.41	1.48
(1,2107)	1:85:A:PHE:HD1	1:87:A:GLU:H	18	1.49	0.22	1.45
(1,2323)	1:13:A:SER:HB2	1:85:A:PHE:HD1	18	1.3	0.51	1.08
(1,2323)	1:13:A:SER:HB3	1:85:A:PHE:HD1	18	1.3	0.51	1.08
(1,2269)	1:13:A:SER:H	1:85:A:PHE:HD1	18	1.19	0.13	1.21

Continued on next page...

Continued from previous page...

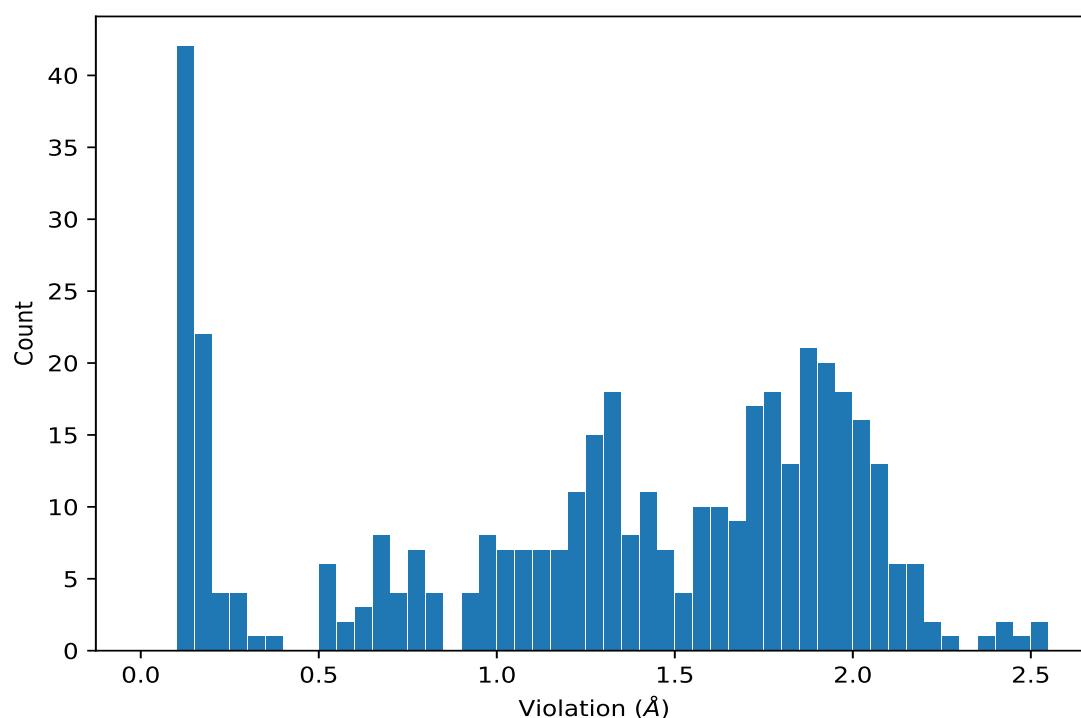
Key	Atom-1	Atom-2	Models ¹	Mean (Å)	SD ¹ (Å)	Median (Å)
(1,2611)	1:85:A:PHE:HE1	1:87:A:GLU:HB2	18	0.94	0.3	1.06
(1,2611)	1:85:A:PHE:HE1	1:87:A:GLU:HB3	18	0.94	0.3	1.06
(1,104)	1:85:A:PHE:HE1	1:87:A:GLU:HB3	14	0.87	0.71	0.72
(1,750)	1:54:A:ILE:HD11	1:67:A:MET:HB2	3	0.15	0.03	0.15
(1,750)	1:54:A:ILE:HD12	1:67:A:MET:HB2	3	0.15	0.03	0.15
(1,750)	1:54:A:ILE:HD13	1:67:A:MET:HB2	3	0.15	0.03	0.15
(1,2593)	1:76:A:THR:HG21	1:87:A:GLU:HG2	3	0.11	0.0	0.11
(1,2593)	1:76:A:THR:HG21	1:87:A:GLU:HG3	3	0.11	0.0	0.11
(1,2593)	1:76:A:THR:HG22	1:87:A:GLU:HG2	3	0.11	0.0	0.11
(1,2593)	1:76:A:THR:HG22	1:87:A:GLU:HG3	3	0.11	0.0	0.11
(1,2593)	1:76:A:THR:HG23	1:87:A:GLU:HG2	3	0.11	0.0	0.11
(1,2593)	1:76:A:THR:HG23	1:87:A:GLU:HG3	3	0.11	0.0	0.11
(1,627)	1:76:A:THR:HG21	1:85:A:PHE:HE1	2	0.24	0.03	0.24
(1,627)	1:76:A:THR:HG22	1:85:A:PHE:HE1	2	0.24	0.03	0.24
(1,627)	1:76:A:THR:HG23	1:85:A:PHE:HE1	2	0.24	0.03	0.24
(1,1912)	1:100:A:THR:HA	1:101:A:ASP:H	2	0.15	0.03	0.15
(1,2298)	1:9:A:VAL:HG21	1:89:A:LYS:HE2	2	0.15	0.03	0.15
(1,2298)	1:9:A:VAL:HG21	1:89:A:LYS:HE3	2	0.15	0.03	0.15
(1,2298)	1:9:A:VAL:HG22	1:89:A:LYS:HE2	2	0.15	0.03	0.15
(1,2298)	1:9:A:VAL:HG22	1:89:A:LYS:HE3	2	0.15	0.03	0.15
(1,2298)	1:9:A:VAL:HG23	1:89:A:LYS:HE2	2	0.15	0.03	0.15
(1,2298)	1:9:A:VAL:HG23	1:89:A:LYS:HE3	2	0.15	0.03	0.15
(1,1857)	1:62:A:GLN:HA	1:62:A:GLN:HE22	2	0.14	0.03	0.14
(1,1786)	1:44:A:LEU:H	1:57:A:ASP:HB3	2	0.13	0.01	0.13
(1,2287)	1:3:A:ASN:HA	1:3:A:ASN:HD21	2	0.12	0.02	0.12
(1,2287)	1:3:A:ASN:HA	1:3:A:ASN:HD22	2	0.12	0.02	0.12

¹Number of violated models, ²Standard deviation

9.5 All violated distance restraints [i](#)

9.5.1 Histogram : Distribution of distance violations [i](#)

The following histogram shows the distribution of the absolute value of the violation for all violated restraints in the ensemble.



9.5.2 Table : All distance violations [i](#)

The following table lists the absolute value of the violation for each restraint in the ensemble sorted by its value. The Key (restraint list ID, restraint ID) is the unique identifier for a given restraint. Rows with same key represent combinatorial or ambiguous restraints and are counted as a single restraint.

Key	Atom-1	Atom-2	Model ID	Violation (Å)
(1,104)	1:85:A:PHE:HE1	1:87:A:GLU:HB3	16	2.51
(1,104)	1:85:A:PHE:HE1	1:87:A:GLU:HB3	3	2.5
(1,2103)	1:79:A:CYS:H	1:85:A:PHE:HD2	14	2.47
(1,2103)	1:79:A:CYS:H	1:85:A:PHE:HD2	18	2.41
(1,103)	1:85:A:PHE:HE1	1:87:A:GLU:HB2	20	2.41
(1,103)	1:85:A:PHE:HE1	1:87:A:GLU:HB2	5	2.36
(1,2103)	1:79:A:CYS:H	1:85:A:PHE:HD2	12	2.26
(1,103)	1:85:A:PHE:HE1	1:87:A:GLU:HB2	10	2.23
(1,2103)	1:79:A:CYS:H	1:85:A:PHE:HD2	13	2.22
(1,2610)	1:85:A:PHE:HD1	1:87:A:GLU:HG2	12	2.19
(1,2610)	1:85:A:PHE:HD1	1:87:A:GLU:HG3	12	2.19
(1,2610)	1:85:A:PHE:HD1	1:87:A:GLU:HG2	5	2.18
(1,2610)	1:85:A:PHE:HD1	1:87:A:GLU:HG3	5	2.18
(1,2103)	1:79:A:CYS:H	1:85:A:PHE:HD2	4	2.17
(1,2103)	1:79:A:CYS:H	1:85:A:PHE:HD2	15	2.15
(1,2612)	1:85:A:PHE:HE1	1:87:A:GLU:HG2	20	2.13

Continued on next page...

Continued from previous page...

Key	Atom-1	Atom-2	Model ID	Violation (Å)
(1,2612)	1:85:A:PHE:HE1	1:87:A:GLU:HG3	20	2.13
(1,2323)	1:13:A:SER:HB2	1:85:A:PHE:HD1	7	2.13
(1,2323)	1:13:A:SER:HB3	1:85:A:PHE:HD1	7	2.13
(1,2610)	1:85:A:PHE:HD1	1:87:A:GLU:HG2	20	2.12
(1,2610)	1:85:A:PHE:HD1	1:87:A:GLU:HG3	20	2.12
(1,2612)	1:85:A:PHE:HE1	1:87:A:GLU:HG2	5	2.09
(1,2612)	1:85:A:PHE:HE1	1:87:A:GLU:HG3	5	2.09
(1,2103)	1:79:A:CYS:H	1:85:A:PHE:HD2	3	2.09
(1,2323)	1:13:A:SER:HB2	1:85:A:PHE:HD1	12	2.08
(1,2323)	1:13:A:SER:HB3	1:85:A:PHE:HD1	12	2.08
(1,2609)	1:85:A:PHE:HD1	1:87:A:GLU:HB2	10	2.06
(1,2609)	1:85:A:PHE:HD1	1:87:A:GLU:HB3	10	2.06
(1,2107)	1:85:A:PHE:HD1	1:87:A:GLU:H	10	2.06
(1,2103)	1:79:A:CYS:H	1:85:A:PHE:HD2	11	2.06
(1,103)	1:85:A:PHE:HE1	1:87:A:GLU:HB2	11	2.06
(1,2609)	1:85:A:PHE:HD1	1:87:A:GLU:HB2	12	2.05
(1,2609)	1:85:A:PHE:HD1	1:87:A:GLU:HB3	12	2.05
(1,2103)	1:79:A:CYS:H	1:85:A:PHE:HD2	6	2.05
(1,2103)	1:79:A:CYS:H	1:85:A:PHE:HD2	5	2.04
(1,2610)	1:85:A:PHE:HD1	1:87:A:GLU:HG2	18	2.03
(1,2610)	1:85:A:PHE:HD1	1:87:A:GLU:HG3	18	2.03
(1,2103)	1:79:A:CYS:H	1:85:A:PHE:HD2	8	2.03
(1,103)	1:85:A:PHE:HE1	1:87:A:GLU:HB2	19	2.03
(1,2612)	1:85:A:PHE:HE1	1:87:A:GLU:HG2	12	2.02
(1,2612)	1:85:A:PHE:HE1	1:87:A:GLU:HG3	12	2.02
(1,2610)	1:85:A:PHE:HD1	1:87:A:GLU:HG2	7	2.02
(1,2610)	1:85:A:PHE:HD1	1:87:A:GLU:HG3	7	2.02
(1,2103)	1:79:A:CYS:H	1:85:A:PHE:HD2	7	2.02
(1,2610)	1:85:A:PHE:HD1	1:87:A:GLU:HG2	10	2.01
(1,2610)	1:85:A:PHE:HD1	1:87:A:GLU:HG3	10	2.01
(1,2103)	1:79:A:CYS:H	1:85:A:PHE:HD2	16	2.01
(1,103)	1:85:A:PHE:HE1	1:87:A:GLU:HB2	2	2.01
(1,2609)	1:85:A:PHE:HD1	1:87:A:GLU:HB2	5	2.0
(1,2609)	1:85:A:PHE:HD1	1:87:A:GLU:HB3	5	2.0
(1,2103)	1:79:A:CYS:H	1:85:A:PHE:HD2	19	1.98
(1,2323)	1:13:A:SER:HB2	1:85:A:PHE:HD1	3	1.97
(1,2323)	1:13:A:SER:HB3	1:85:A:PHE:HD1	3	1.97
(1,468)	1:78:A:VAL:HG21	1:85:A:PHE:HE2	2	1.97
(1,468)	1:78:A:VAL:HG22	1:85:A:PHE:HE2	2	1.97
(1,468)	1:78:A:VAL:HG23	1:85:A:PHE:HE2	2	1.97
(1,468)	1:78:A:VAL:HG21	1:85:A:PHE:HE2	8	1.97
(1,468)	1:78:A:VAL:HG22	1:85:A:PHE:HE2	8	1.97

Continued on next page...

Continued from previous page...

Key	Atom-1	Atom-2	Model ID	Violation (Å)
(1,468)	1:78:A:VAL:HG23	1:85:A:PHE:HE2	8	1.97
(1,2612)	1:85:A:PHE:HE1	1:87:A:GLU:HG2	10	1.96
(1,2612)	1:85:A:PHE:HE1	1:87:A:GLU:HG3	10	1.96
(1,2323)	1:13:A:SER:HB2	1:85:A:PHE:HD1	11	1.96
(1,2323)	1:13:A:SER:HB3	1:85:A:PHE:HD1	11	1.96
(1,2103)	1:79:A:CYS:H	1:85:A:PHE:HD2	2	1.96
(1,468)	1:78:A:VAL:HG21	1:85:A:PHE:HE2	15	1.95
(1,468)	1:78:A:VAL:HG22	1:85:A:PHE:HE2	15	1.95
(1,468)	1:78:A:VAL:HG23	1:85:A:PHE:HE2	15	1.95
(1,103)	1:85:A:PHE:HE1	1:87:A:GLU:HB2	12	1.95
(1,468)	1:78:A:VAL:HG21	1:85:A:PHE:HE2	11	1.93
(1,468)	1:78:A:VAL:HG22	1:85:A:PHE:HE2	11	1.93
(1,468)	1:78:A:VAL:HG23	1:85:A:PHE:HE2	11	1.93
(1,2609)	1:85:A:PHE:HD1	1:87:A:GLU:HB2	7	1.92
(1,2609)	1:85:A:PHE:HD1	1:87:A:GLU:HB3	7	1.92
(1,2609)	1:85:A:PHE:HD1	1:87:A:GLU:HB2	20	1.92
(1,2609)	1:85:A:PHE:HD1	1:87:A:GLU:HB3	20	1.92
(1,468)	1:78:A:VAL:HG21	1:85:A:PHE:HE2	18	1.92
(1,468)	1:78:A:VAL:HG22	1:85:A:PHE:HE2	18	1.92
(1,468)	1:78:A:VAL:HG23	1:85:A:PHE:HE2	18	1.92
(1,2610)	1:85:A:PHE:HD1	1:87:A:GLU:HG2	16	1.91
(1,2610)	1:85:A:PHE:HD1	1:87:A:GLU:HG3	16	1.91
(1,2323)	1:13:A:SER:HB2	1:85:A:PHE:HD1	20	1.91
(1,2323)	1:13:A:SER:HB3	1:85:A:PHE:HD1	20	1.91
(1,468)	1:78:A:VAL:HG21	1:85:A:PHE:HE2	7	1.91
(1,468)	1:78:A:VAL:HG22	1:85:A:PHE:HE2	7	1.91
(1,468)	1:78:A:VAL:HG23	1:85:A:PHE:HE2	7	1.91
(1,47)	1:78:A:VAL:HA	1:85:A:PHE:HD2	18	1.91
(1,2612)	1:85:A:PHE:HE1	1:87:A:GLU:HG2	7	1.9
(1,2612)	1:85:A:PHE:HE1	1:87:A:GLU:HG3	7	1.9
(1,2609)	1:85:A:PHE:HD1	1:87:A:GLU:HB2	11	1.89
(1,2609)	1:85:A:PHE:HD1	1:87:A:GLU:HB3	11	1.89
(1,2609)	1:85:A:PHE:HD1	1:87:A:GLU:HB2	16	1.89
(1,2609)	1:85:A:PHE:HD1	1:87:A:GLU:HB3	16	1.89
(1,468)	1:78:A:VAL:HG21	1:85:A:PHE:HE2	5	1.89
(1,468)	1:78:A:VAL:HG22	1:85:A:PHE:HE2	5	1.89
(1,468)	1:78:A:VAL:HG23	1:85:A:PHE:HE2	5	1.89
(1,468)	1:78:A:VAL:HG21	1:85:A:PHE:HE2	12	1.89
(1,468)	1:78:A:VAL:HG22	1:85:A:PHE:HE2	12	1.89
(1,468)	1:78:A:VAL:HG23	1:85:A:PHE:HE2	12	1.89
(1,47)	1:78:A:VAL:HA	1:85:A:PHE:HD2	14	1.89
(1,468)	1:78:A:VAL:HG21	1:85:A:PHE:HE2	17	1.88

Continued on next page...

Continued from previous page...

Key	Atom-1	Atom-2	Model ID	Violation (Å)
(1,468)	1:78:A:VAL:HG22	1:85:A:PHE:HE2	17	1.88
(1,468)	1:78:A:VAL:HG23	1:85:A:PHE:HE2	17	1.88
(1,47)	1:78:A:VAL:HA	1:85:A:PHE:HD2	15	1.88
(1,2103)	1:79:A:CYS:H	1:85:A:PHE:HD2	10	1.87
(1,2323)	1:13:A:SER:HB2	1:85:A:PHE:HD1	17	1.85
(1,2323)	1:13:A:SER:HB3	1:85:A:PHE:HD1	17	1.85
(1,468)	1:78:A:VAL:HG21	1:85:A:PHE:HE2	14	1.85
(1,468)	1:78:A:VAL:HG22	1:85:A:PHE:HE2	14	1.85
(1,468)	1:78:A:VAL:HG23	1:85:A:PHE:HE2	14	1.85
(1,47)	1:78:A:VAL:HA	1:85:A:PHE:HD2	12	1.84
(1,468)	1:78:A:VAL:HG21	1:85:A:PHE:HE2	13	1.83
(1,468)	1:78:A:VAL:HG22	1:85:A:PHE:HE2	13	1.83
(1,468)	1:78:A:VAL:HG23	1:85:A:PHE:HE2	13	1.83
(1,468)	1:78:A:VAL:HG21	1:85:A:PHE:HE2	19	1.83
(1,468)	1:78:A:VAL:HG22	1:85:A:PHE:HE2	19	1.83
(1,468)	1:78:A:VAL:HG23	1:85:A:PHE:HE2	19	1.83
(1,468)	1:78:A:VAL:HG21	1:85:A:PHE:HE2	4	1.82
(1,468)	1:78:A:VAL:HG22	1:85:A:PHE:HE2	4	1.82
(1,468)	1:78:A:VAL:HG23	1:85:A:PHE:HE2	4	1.82
(1,2609)	1:85:A:PHE:HD1	1:87:A:GLU:HB2	2	1.81
(1,2609)	1:85:A:PHE:HD1	1:87:A:GLU:HB3	2	1.81
(1,103)	1:85:A:PHE:HE1	1:87:A:GLU:HB2	7	1.8
(1,2612)	1:85:A:PHE:HE1	1:87:A:GLU:HG2	2	1.79
(1,2612)	1:85:A:PHE:HE1	1:87:A:GLU:HG3	2	1.79
(1,2103)	1:79:A:CYS:H	1:85:A:PHE:HD2	17	1.79
(1,2609)	1:85:A:PHE:HD1	1:87:A:GLU:HB2	19	1.78
(1,2609)	1:85:A:PHE:HD1	1:87:A:GLU:HB3	19	1.78
(1,103)	1:85:A:PHE:HE1	1:87:A:GLU:HB2	8	1.78
(1,47)	1:78:A:VAL:HA	1:85:A:PHE:HD2	13	1.77
(1,2107)	1:85:A:PHE:HD1	1:87:A:GLU:H	19	1.76
(1,468)	1:78:A:VAL:HG21	1:85:A:PHE:HE2	16	1.76
(1,468)	1:78:A:VAL:HG22	1:85:A:PHE:HE2	16	1.76
(1,468)	1:78:A:VAL:HG23	1:85:A:PHE:HE2	16	1.76
(1,47)	1:78:A:VAL:HA	1:85:A:PHE:HD2	4	1.76
(1,468)	1:78:A:VAL:HG21	1:85:A:PHE:HE2	3	1.75
(1,468)	1:78:A:VAL:HG22	1:85:A:PHE:HE2	3	1.75
(1,468)	1:78:A:VAL:HG23	1:85:A:PHE:HE2	3	1.75
(1,468)	1:78:A:VAL:HG21	1:85:A:PHE:HE2	6	1.75
(1,468)	1:78:A:VAL:HG22	1:85:A:PHE:HE2	6	1.75
(1,468)	1:78:A:VAL:HG23	1:85:A:PHE:HE2	6	1.75
(1,47)	1:78:A:VAL:HA	1:85:A:PHE:HD2	8	1.74
(1,47)	1:78:A:VAL:HA	1:85:A:PHE:HD2	11	1.74

Continued on next page...

Continued from previous page...

Key	Atom-1	Atom-2	Model ID	Violation (Å)
(1,2103)	1:79:A:CYS:H	1:85:A:PHE:HD2	20	1.73
(1,47)	1:78:A:VAL:HA	1:85:A:PHE:HD2	2	1.73
(1,468)	1:78:A:VAL:HG21	1:85:A:PHE:HE2	10	1.72
(1,468)	1:78:A:VAL:HG22	1:85:A:PHE:HE2	10	1.72
(1,468)	1:78:A:VAL:HG23	1:85:A:PHE:HE2	10	1.72
(1,103)	1:85:A:PHE:HE1	1:87:A:GLU:HB2	14	1.72
(1,47)	1:78:A:VAL:HA	1:85:A:PHE:HD2	5	1.72
(1,47)	1:78:A:VAL:HA	1:85:A:PHE:HD2	7	1.72
(1,2610)	1:85:A:PHE:HD1	1:87:A:GLU:HG2	2	1.71
(1,2610)	1:85:A:PHE:HD1	1:87:A:GLU:HG3	2	1.71
(1,2107)	1:85:A:PHE:HD1	1:87:A:GLU:H	6	1.71
(1,47)	1:78:A:VAL:HA	1:85:A:PHE:HD2	3	1.71
(1,468)	1:78:A:VAL:HG21	1:85:A:PHE:HE2	20	1.7
(1,468)	1:78:A:VAL:HG22	1:85:A:PHE:HE2	20	1.7
(1,468)	1:78:A:VAL:HG23	1:85:A:PHE:HE2	20	1.7
(1,2612)	1:85:A:PHE:HE1	1:87:A:GLU:HG2	19	1.68
(1,2612)	1:85:A:PHE:HE1	1:87:A:GLU:HG3	19	1.68
(1,2609)	1:85:A:PHE:HD1	1:87:A:GLU:HB2	3	1.67
(1,2609)	1:85:A:PHE:HD1	1:87:A:GLU:HB3	3	1.67
(1,2609)	1:85:A:PHE:HD1	1:87:A:GLU:HB2	8	1.67
(1,2609)	1:85:A:PHE:HD1	1:87:A:GLU:HB3	8	1.67
(1,47)	1:78:A:VAL:HA	1:85:A:PHE:HD2	6	1.66
(1,2107)	1:85:A:PHE:HD1	1:87:A:GLU:H	20	1.65
(1,103)	1:85:A:PHE:HE1	1:87:A:GLU:HB2	6	1.65
(1,2107)	1:85:A:PHE:HD1	1:87:A:GLU:H	2	1.64
(1,2107)	1:85:A:PHE:HD1	1:87:A:GLU:H	12	1.64
(1,2612)	1:85:A:PHE:HE1	1:87:A:GLU:HG2	11	1.63
(1,2612)	1:85:A:PHE:HE1	1:87:A:GLU:HG3	11	1.63
(1,47)	1:78:A:VAL:HA	1:85:A:PHE:HD2	19	1.63
(1,2609)	1:85:A:PHE:HD1	1:87:A:GLU:HB2	6	1.62
(1,2609)	1:85:A:PHE:HD1	1:87:A:GLU:HB3	6	1.62
(1,2609)	1:85:A:PHE:HD1	1:87:A:GLU:HB2	14	1.6
(1,2609)	1:85:A:PHE:HD1	1:87:A:GLU:HB3	14	1.6
(1,47)	1:78:A:VAL:HA	1:85:A:PHE:HD2	10	1.6
(1,2610)	1:85:A:PHE:HD1	1:87:A:GLU:HG2	11	1.59
(1,2610)	1:85:A:PHE:HD1	1:87:A:GLU:HG3	11	1.59
(1,2610)	1:85:A:PHE:HD1	1:87:A:GLU:HG2	19	1.59
(1,2610)	1:85:A:PHE:HD1	1:87:A:GLU:HG3	19	1.59
(1,2107)	1:85:A:PHE:HD1	1:87:A:GLU:H	8	1.59
(1,47)	1:78:A:VAL:HA	1:85:A:PHE:HD2	16	1.59
(1,2610)	1:85:A:PHE:HD1	1:87:A:GLU:HG2	3	1.57
(1,2610)	1:85:A:PHE:HD1	1:87:A:GLU:HG3	3	1.57

Continued on next page...

Continued from previous page...

Key	Atom-1	Atom-2	Model ID	Violation (Å)
(1,47)	1:78:A:VAL:HA	1:85:A:PHE:HD2	17	1.57
(1,2107)	1:85:A:PHE:HD1	1:87:A:GLU:H	11	1.55
(1,2612)	1:85:A:PHE:HE1	1:87:A:GLU:HG2	18	1.54
(1,2612)	1:85:A:PHE:HE1	1:87:A:GLU:HG3	18	1.54
(1,2610)	1:85:A:PHE:HD1	1:87:A:GLU:HG2	13	1.52
(1,2610)	1:85:A:PHE:HD1	1:87:A:GLU:HG3	13	1.52
(1,2107)	1:85:A:PHE:HD1	1:87:A:GLU:H	4	1.49
(1,103)	1:85:A:PHE:HE1	1:87:A:GLU:HB2	17	1.48
(1,47)	1:78:A:VAL:HA	1:85:A:PHE:HD2	20	1.48
(1,2609)	1:85:A:PHE:HD1	1:87:A:GLU:HB2	13	1.47
(1,2609)	1:85:A:PHE:HD1	1:87:A:GLU:HB3	13	1.47
(1,2609)	1:85:A:PHE:HD1	1:87:A:GLU:HB2	17	1.45
(1,2609)	1:85:A:PHE:HD1	1:87:A:GLU:HB3	17	1.45
(1,2609)	1:85:A:PHE:HD1	1:87:A:GLU:HB2	18	1.44
(1,2609)	1:85:A:PHE:HD1	1:87:A:GLU:HB3	18	1.44
(1,103)	1:85:A:PHE:HE1	1:87:A:GLU:HB2	13	1.44
(1,2269)	1:13:A:SER:H	1:85:A:PHE:HD1	10	1.43
(1,2612)	1:85:A:PHE:HE1	1:87:A:GLU:HG2	13	1.42
(1,2612)	1:85:A:PHE:HE1	1:87:A:GLU:HG3	13	1.42
(1,2107)	1:85:A:PHE:HD1	1:87:A:GLU:H	14	1.41
(1,2609)	1:85:A:PHE:HD1	1:87:A:GLU:HB2	4	1.4
(1,2609)	1:85:A:PHE:HD1	1:87:A:GLU:HB3	4	1.4
(1,2107)	1:85:A:PHE:HD1	1:87:A:GLU:H	7	1.4
(1,103)	1:85:A:PHE:HE1	1:87:A:GLU:HB2	4	1.4
(1,103)	1:85:A:PHE:HE1	1:87:A:GLU:HB2	15	1.38
(1,2610)	1:85:A:PHE:HD1	1:87:A:GLU:HG2	4	1.37
(1,2610)	1:85:A:PHE:HD1	1:87:A:GLU:HG3	4	1.37
(1,2107)	1:85:A:PHE:HD1	1:87:A:GLU:H	13	1.37
(1,2107)	1:85:A:PHE:HD1	1:87:A:GLU:H	16	1.37
(1,2612)	1:85:A:PHE:HE1	1:87:A:GLU:HG2	15	1.36
(1,2612)	1:85:A:PHE:HE1	1:87:A:GLU:HG3	15	1.36
(1,2107)	1:85:A:PHE:HD1	1:87:A:GLU:H	5	1.35
(1,2269)	1:13:A:SER:H	1:85:A:PHE:HD1	16	1.33
(1,2611)	1:85:A:PHE:HE1	1:87:A:GLU:HB2	10	1.32
(1,2611)	1:85:A:PHE:HE1	1:87:A:GLU:HB3	10	1.32
(1,2611)	1:85:A:PHE:HE1	1:87:A:GLU:HB2	20	1.32
(1,2611)	1:85:A:PHE:HE1	1:87:A:GLU:HB3	20	1.32
(1,2269)	1:13:A:SER:H	1:85:A:PHE:HD1	6	1.32
(1,2107)	1:85:A:PHE:HD1	1:87:A:GLU:H	17	1.32
(1,2610)	1:85:A:PHE:HD1	1:87:A:GLU:HG2	15	1.31
(1,2610)	1:85:A:PHE:HD1	1:87:A:GLU:HG3	15	1.31
(1,2612)	1:85:A:PHE:HE1	1:87:A:GLU:HG2	14	1.3

Continued on next page...

Continued from previous page...

Key	Atom-1	Atom-2	Model ID	Violation (Å)
(1,2612)	1:85:A:PHE:HE1	1:87:A:GLU:HG3	14	1.3
(1,2610)	1:85:A:PHE:HD1	1:87:A:GLU:HG2	6	1.3
(1,2610)	1:85:A:PHE:HD1	1:87:A:GLU:HG3	6	1.3
(1,2610)	1:85:A:PHE:HD1	1:87:A:GLU:HG2	14	1.3
(1,2610)	1:85:A:PHE:HD1	1:87:A:GLU:HG3	14	1.3
(1,2609)	1:85:A:PHE:HD1	1:87:A:GLU:HB2	15	1.3
(1,2609)	1:85:A:PHE:HD1	1:87:A:GLU:HB3	15	1.3
(1,2269)	1:13:A:SER:H	1:85:A:PHE:HD1	18	1.3
(1,2610)	1:85:A:PHE:HD1	1:87:A:GLU:HG2	8	1.29
(1,2610)	1:85:A:PHE:HD1	1:87:A:GLU:HG3	8	1.29
(1,103)	1:85:A:PHE:HE1	1:87:A:GLU:HB2	18	1.29
(1,2269)	1:13:A:SER:H	1:85:A:PHE:HD1	19	1.28
(1,2107)	1:85:A:PHE:HD1	1:87:A:GLU:H	3	1.28
(1,2612)	1:85:A:PHE:HE1	1:87:A:GLU:HG2	4	1.27
(1,2612)	1:85:A:PHE:HE1	1:87:A:GLU:HG3	4	1.27
(1,2269)	1:13:A:SER:H	1:85:A:PHE:HD1	8	1.27
(1,2611)	1:85:A:PHE:HE1	1:87:A:GLU:HB2	5	1.26
(1,2611)	1:85:A:PHE:HE1	1:87:A:GLU:HB3	5	1.26
(1,2323)	1:13:A:SER:HB2	1:85:A:PHE:HD1	19	1.26
(1,2323)	1:13:A:SER:HB3	1:85:A:PHE:HD1	19	1.26
(1,2611)	1:85:A:PHE:HE1	1:87:A:GLU:HB2	16	1.25
(1,2611)	1:85:A:PHE:HE1	1:87:A:GLU:HB3	16	1.25
(1,2269)	1:13:A:SER:H	1:85:A:PHE:HD1	2	1.25
(1,2269)	1:13:A:SER:H	1:85:A:PHE:HD1	7	1.24
(1,2611)	1:85:A:PHE:HE1	1:87:A:GLU:HB2	3	1.23
(1,2611)	1:85:A:PHE:HE1	1:87:A:GLU:HB3	3	1.23
(1,2269)	1:13:A:SER:H	1:85:A:PHE:HD1	11	1.22
(1,2269)	1:13:A:SER:H	1:85:A:PHE:HD1	17	1.21
(1,2612)	1:85:A:PHE:HE1	1:87:A:GLU:HG2	8	1.2
(1,2612)	1:85:A:PHE:HE1	1:87:A:GLU:HG3	8	1.2
(1,2611)	1:85:A:PHE:HE1	1:87:A:GLU:HB2	12	1.2
(1,2611)	1:85:A:PHE:HE1	1:87:A:GLU:HB3	12	1.2
(1,2269)	1:13:A:SER:H	1:85:A:PHE:HD1	20	1.2
(1,2107)	1:85:A:PHE:HD1	1:87:A:GLU:H	15	1.2
(1,2323)	1:13:A:SER:HB2	1:85:A:PHE:HD1	2	1.18
(1,2323)	1:13:A:SER:HB3	1:85:A:PHE:HD1	2	1.18
(1,2612)	1:85:A:PHE:HE1	1:87:A:GLU:HG2	6	1.17
(1,2612)	1:85:A:PHE:HE1	1:87:A:GLU:HG3	6	1.17
(1,2610)	1:85:A:PHE:HD1	1:87:A:GLU:HG2	17	1.17
(1,2610)	1:85:A:PHE:HD1	1:87:A:GLU:HG3	17	1.17
(1,2269)	1:13:A:SER:H	1:85:A:PHE:HD1	13	1.16
(1,2323)	1:13:A:SER:HB2	1:85:A:PHE:HD1	15	1.13

Continued on next page...

Continued from previous page...

Key	Atom-1	Atom-2	Model ID	Violation (Å)
(1,2323)	1:13:A:SER:HB3	1:85:A:PHE:HD1	15	1.13
(1,2269)	1:13:A:SER:H	1:85:A:PHE:HD1	4	1.13
(1,2611)	1:85:A:PHE:HE1	1:87:A:GLU:HB2	7	1.12
(1,2611)	1:85:A:PHE:HE1	1:87:A:GLU:HB3	7	1.12
(1,2269)	1:13:A:SER:H	1:85:A:PHE:HD1	3	1.1
(1,2269)	1:13:A:SER:H	1:85:A:PHE:HD1	12	1.1
(1,2612)	1:85:A:PHE:HE1	1:87:A:GLU:HG2	17	1.09
(1,2612)	1:85:A:PHE:HE1	1:87:A:GLU:HG3	17	1.09
(1,2611)	1:85:A:PHE:HE1	1:87:A:GLU:HB2	2	1.09
(1,2611)	1:85:A:PHE:HE1	1:87:A:GLU:HB3	2	1.09
(1,2107)	1:85:A:PHE:HD1	1:87:A:GLU:H	18	1.09
(1,2611)	1:85:A:PHE:HE1	1:87:A:GLU:HB2	11	1.08
(1,2611)	1:85:A:PHE:HE1	1:87:A:GLU:HB3	11	1.08
(1,2611)	1:85:A:PHE:HE1	1:87:A:GLU:HB2	19	1.04
(1,2611)	1:85:A:PHE:HE1	1:87:A:GLU:HB3	19	1.04
(1,2323)	1:13:A:SER:HB2	1:85:A:PHE:HD1	16	1.04
(1,2323)	1:13:A:SER:HB3	1:85:A:PHE:HD1	16	1.04
(1,2323)	1:13:A:SER:HB2	1:85:A:PHE:HD1	14	1.01
(1,2323)	1:13:A:SER:HB3	1:85:A:PHE:HD1	14	1.01
(1,2269)	1:13:A:SER:H	1:85:A:PHE:HD1	15	1.0
(1,2323)	1:13:A:SER:HB2	1:85:A:PHE:HD1	6	0.99
(1,2323)	1:13:A:SER:HB3	1:85:A:PHE:HD1	6	0.99
(1,2323)	1:13:A:SER:HB2	1:85:A:PHE:HD1	18	0.98
(1,2323)	1:13:A:SER:HB3	1:85:A:PHE:HD1	18	0.98
(1,2323)	1:13:A:SER:HB2	1:85:A:PHE:HD1	8	0.95
(1,2323)	1:13:A:SER:HB3	1:85:A:PHE:HD1	8	0.95
(1,2269)	1:13:A:SER:H	1:85:A:PHE:HD1	5	0.95
(1,2269)	1:13:A:SER:H	1:85:A:PHE:HD1	14	0.95
(1,2612)	1:85:A:PHE:HE1	1:87:A:GLU:HG2	16	0.92
(1,2612)	1:85:A:PHE:HE1	1:87:A:GLU:HG3	16	0.92
(1,104)	1:85:A:PHE:HE1	1:87:A:GLU:HB3	10	0.92
(1,104)	1:85:A:PHE:HE1	1:87:A:GLU:HB3	20	0.9
(1,104)	1:85:A:PHE:HE1	1:87:A:GLU:HB3	12	0.84
(1,2611)	1:85:A:PHE:HE1	1:87:A:GLU:HB2	8	0.83
(1,2611)	1:85:A:PHE:HE1	1:87:A:GLU:HB3	8	0.83
(1,104)	1:85:A:PHE:HE1	1:87:A:GLU:HB3	5	0.82
(1,103)	1:85:A:PHE:HE1	1:87:A:GLU:HB2	16	0.79
(1,103)	1:85:A:PHE:HE1	1:87:A:GLU:HB2	3	0.77
(1,104)	1:85:A:PHE:HE1	1:87:A:GLU:HB3	7	0.76
(1,2323)	1:13:A:SER:HB2	1:85:A:PHE:HD1	10	0.75
(1,2323)	1:13:A:SER:HB3	1:85:A:PHE:HD1	10	0.75
(1,2323)	1:13:A:SER:HB2	1:85:A:PHE:HD1	13	0.75

Continued on next page...

Continued from previous page...

Key	Atom-1	Atom-2	Model ID	Violation (Å)
(1,2323)	1:13:A:SER:HB3	1:85:A:PHE:HD1	13	0.75
(1,2611)	1:85:A:PHE:HE1	1:87:A:GLU:HB2	14	0.74
(1,2611)	1:85:A:PHE:HE1	1:87:A:GLU:HB3	14	0.74
(1,2323)	1:13:A:SER:HB2	1:85:A:PHE:HD1	5	0.72
(1,2323)	1:13:A:SER:HB3	1:85:A:PHE:HD1	5	0.72
(1,2323)	1:13:A:SER:HB2	1:85:A:PHE:HD1	4	0.67
(1,2323)	1:13:A:SER:HB3	1:85:A:PHE:HD1	4	0.67
(1,104)	1:85:A:PHE:HE1	1:87:A:GLU:HB3	2	0.67
(1,2612)	1:85:A:PHE:HE1	1:87:A:GLU:HG2	3	0.66
(1,2612)	1:85:A:PHE:HE1	1:87:A:GLU:HG3	3	0.66
(1,2611)	1:85:A:PHE:HE1	1:87:A:GLU:HB2	6	0.65
(1,2611)	1:85:A:PHE:HE1	1:87:A:GLU:HB3	6	0.65
(1,104)	1:85:A:PHE:HE1	1:87:A:GLU:HB3	11	0.65
(1,2611)	1:85:A:PHE:HE1	1:87:A:GLU:HB2	13	0.63
(1,2611)	1:85:A:PHE:HE1	1:87:A:GLU:HB3	13	0.63
(1,104)	1:85:A:PHE:HE1	1:87:A:GLU:HB3	19	0.6
(1,2611)	1:85:A:PHE:HE1	1:87:A:GLU:HB2	17	0.55
(1,2611)	1:85:A:PHE:HE1	1:87:A:GLU:HB3	17	0.55
(1,2611)	1:85:A:PHE:HE1	1:87:A:GLU:HB2	15	0.54
(1,2611)	1:85:A:PHE:HE1	1:87:A:GLU:HB3	15	0.54
(1,2611)	1:85:A:PHE:HE1	1:87:A:GLU:HB2	4	0.53
(1,2611)	1:85:A:PHE:HE1	1:87:A:GLU:HB3	4	0.53
(1,2611)	1:85:A:PHE:HE1	1:87:A:GLU:HB2	18	0.52
(1,2611)	1:85:A:PHE:HE1	1:87:A:GLU:HB3	18	0.52
(1,104)	1:85:A:PHE:HE1	1:87:A:GLU:HB3	8	0.38
(1,1926)	1:92:A:GLN:HA	1:93:A:LYS:H	8	0.34
(1,627)	1:76:A:THR:HG21	1:85:A:PHE:HE1	20	0.27
(1,627)	1:76:A:THR:HG22	1:85:A:PHE:HE1	20	0.27
(1,627)	1:76:A:THR:HG23	1:85:A:PHE:HE1	20	0.27
(1,104)	1:85:A:PHE:HE1	1:87:A:GLU:HB3	14	0.27
(1,825)	1:104:A:VAL:HB	1:105:A:PRO:HD2	13	0.22
(1,627)	1:76:A:THR:HG21	1:85:A:PHE:HE1	10	0.21
(1,627)	1:76:A:THR:HG22	1:85:A:PHE:HE1	10	0.21
(1,627)	1:76:A:THR:HG23	1:85:A:PHE:HE1	10	0.21
(1,750)	1:54:A:ILE:HD11	1:67:A:MET:HB2	3	0.19
(1,750)	1:54:A:ILE:HD12	1:67:A:MET:HB2	3	0.19
(1,750)	1:54:A:ILE:HD13	1:67:A:MET:HB2	3	0.19
(1,1912)	1:100:A:THR:HA	1:101:A:ASP:H	20	0.18
(1,1857)	1:62:A:GLN:HA	1:62:A:GLN:HE22	11	0.18
(1,104)	1:85:A:PHE:HE1	1:87:A:GLU:HB3	13	0.18
(1,2298)	1:9:A:VAL:HG21	1:89:A:LYS:HE2	6	0.17
(1,2298)	1:9:A:VAL:HG21	1:89:A:LYS:HE3	6	0.17

Continued on next page...

Continued from previous page...

Key	Atom-1	Atom-2	Model ID	Violation (Å)
(1,2298)	1:9:A:VAL:HG22	1:89:A:LYS:HE2	6	0.17
(1,2298)	1:9:A:VAL:HG22	1:89:A:LYS:HE3	6	0.17
(1,2298)	1:9:A:VAL:HG23	1:89:A:LYS:HE2	6	0.17
(1,2298)	1:9:A:VAL:HG23	1:89:A:LYS:HE3	6	0.17
(1,104)	1:85:A:PHE:HE1	1:87:A:GLU:HB3	6	0.17
(1,2664)	1:98:A:PRO:HG2	1:99:A:ASP:H	9	0.16
(1,2664)	1:98:A:PRO:HG3	1:99:A:ASP:H	9	0.16
(1,1556)	1:93:A:LYS:HD3	1:94:A:ASP:H	12	0.16
(1,750)	1:54:A:ILE:HD11	1:67:A:MET:HB2	20	0.15
(1,750)	1:54:A:ILE:HD12	1:67:A:MET:HB2	20	0.15
(1,750)	1:54:A:ILE:HD13	1:67:A:MET:HB2	20	0.15
(1,698)	1:11:A:ILE:HD11	1:89:A:LYS:HD2	1	0.15
(1,698)	1:11:A:ILE:HD12	1:89:A:LYS:HD2	1	0.15
(1,698)	1:11:A:ILE:HD13	1:89:A:LYS:HD2	1	0.15
(1,2287)	1:3:A:ASN:HA	1:3:A:ASN:HD21	12	0.14
(1,2287)	1:3:A:ASN:HA	1:3:A:ASN:HD22	12	0.14
(1,1786)	1:44:A:LEU:H	1:57:A:ASP:HB3	4	0.14
(1,285)	1:85:A:PHE:HA	1:85:A:PHE:HD2	15	0.13
(1,2593)	1:76:A:THR:HG21	1:87:A:GLU:HG2	11	0.12
(1,2593)	1:76:A:THR:HG21	1:87:A:GLU:HG3	11	0.12
(1,2593)	1:76:A:THR:HG22	1:87:A:GLU:HG2	11	0.12
(1,2593)	1:76:A:THR:HG22	1:87:A:GLU:HG3	11	0.12
(1,2593)	1:76:A:THR:HG23	1:87:A:GLU:HG2	11	0.12
(1,2593)	1:76:A:THR:HG23	1:87:A:GLU:HG3	11	0.12
(1,2298)	1:9:A:VAL:HG21	1:89:A:LYS:HE2	2	0.12
(1,2298)	1:9:A:VAL:HG21	1:89:A:LYS:HE3	2	0.12
(1,2298)	1:9:A:VAL:HG22	1:89:A:LYS:HE2	2	0.12
(1,2298)	1:9:A:VAL:HG22	1:89:A:LYS:HE3	2	0.12
(1,2298)	1:9:A:VAL:HG23	1:89:A:LYS:HE2	2	0.12
(1,2298)	1:9:A:VAL:HG23	1:89:A:LYS:HE3	2	0.12
(1,1912)	1:100:A:THR:HA	1:101:A:ASP:H	14	0.12
(1,1786)	1:44:A:LEU:H	1:57:A:ASP:HB3	17	0.12
(1,2669)	1:101:A:ASP:H	1:102:A:LEU:HB2	2	0.11
(1,2669)	1:101:A:ASP:H	1:102:A:LEU:HB3	2	0.11
(1,2593)	1:76:A:THR:HG21	1:87:A:GLU:HG2	7	0.11
(1,2593)	1:76:A:THR:HG21	1:87:A:GLU:HG3	7	0.11
(1,2593)	1:76:A:THR:HG22	1:87:A:GLU:HG2	7	0.11
(1,2593)	1:76:A:THR:HG22	1:87:A:GLU:HG3	7	0.11
(1,2593)	1:76:A:THR:HG23	1:87:A:GLU:HG2	7	0.11
(1,2593)	1:76:A:THR:HG23	1:87:A:GLU:HG3	7	0.11
(1,2593)	1:76:A:THR:HG21	1:87:A:GLU:HG2	14	0.11
(1,2593)	1:76:A:THR:HG21	1:87:A:GLU:HG3	14	0.11

Continued on next page...

Continued from previous page...

Key	Atom-1	Atom-2	Model ID	Violation (Å)
(1,2593)	1:76:A:THR:HG22	1:87:A:GLU:HG2	14	0.11
(1,2593)	1:76:A:THR:HG22	1:87:A:GLU:HG3	14	0.11
(1,2593)	1:76:A:THR:HG23	1:87:A:GLU:HG2	14	0.11
(1,2593)	1:76:A:THR:HG23	1:87:A:GLU:HG3	14	0.11
(1,2287)	1:3:A:ASN:HA	1:3:A:ASN:HD21	5	0.11
(1,2287)	1:3:A:ASN:HA	1:3:A:ASN:HD22	5	0.11
(1,1857)	1:62:A:GLN:HA	1:62:A:GLN:HE22	7	0.11
(1,1787)	1:57:A:ASP:HB3	1:59:A:SER:H	19	0.11
(1,1506)	1:70:A:LYS:HD2	1:75:A:ASP:H	7	0.11
(1,750)	1:54:A:ILE:HD11	1:67:A:MET:HB2	7	0.11
(1,750)	1:54:A:ILE:HD12	1:67:A:MET:HB2	7	0.11
(1,750)	1:54:A:ILE:HD13	1:67:A:MET:HB2	7	0.11
(1,2243)	1:3:A:ASN:HA	1:3:A:ASN:HD22	5	0.1
(1,1931)	1:95:A:SER:HA	1:96:A:LYS:H	20	0.1

10 Dihedral-angle violation analysis [i](#)

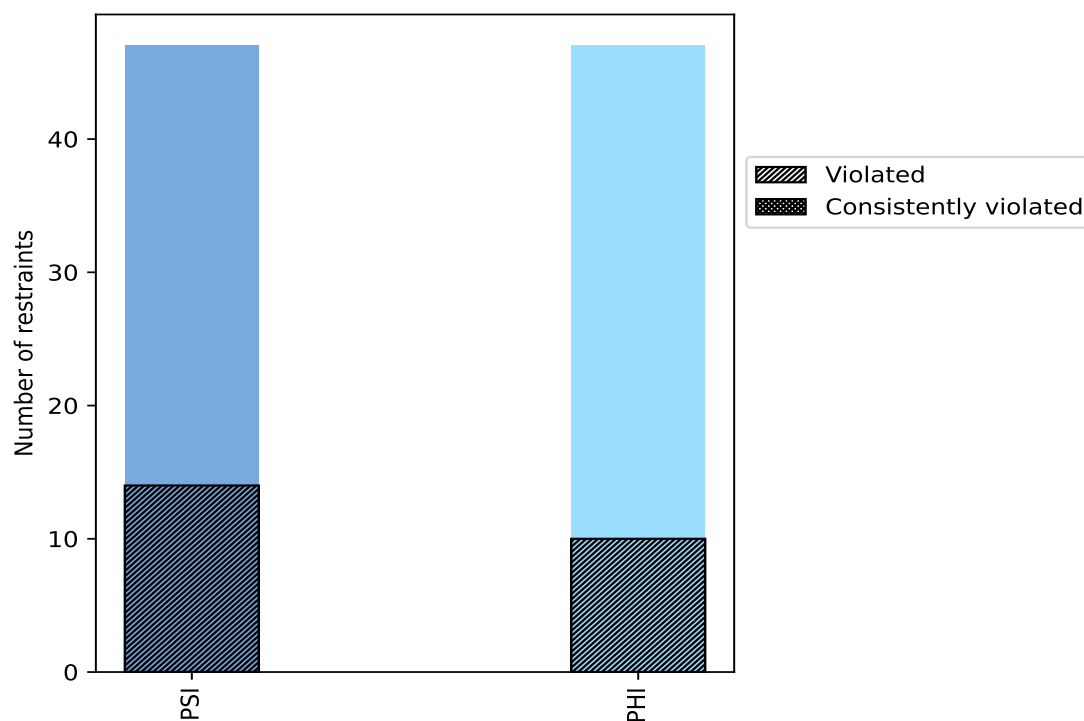
10.1 Summary of dihedral-angle violations [i](#)

The following table provides the summary of dihedral-angle violations in different dihedral-angle types. Violations less than 1° are not included in the calculation.

Angle type	Count	% ¹	Violated ³			Consistently Violated ⁴		
			Count	% ²	% ¹	Count	% ²	% ¹
PSI	47	50.0	14	29.8	14.9	0	0.0	0.0
PHI	47	50.0	10	21.3	10.6	0	0.0	0.0
Total	94	100.0	24	25.5	25.5	0	0.0	0.0

¹ percentage calculated with respect to total number of dihedral-angle restraints, ² percentage calculated with respect to number of restraints in a particular dihedral-angle type, ³ violated in at least one model, ⁴ violated in all the models

10.1.1 Bar chart : Distribution of dihedral-angles and violations [i](#)



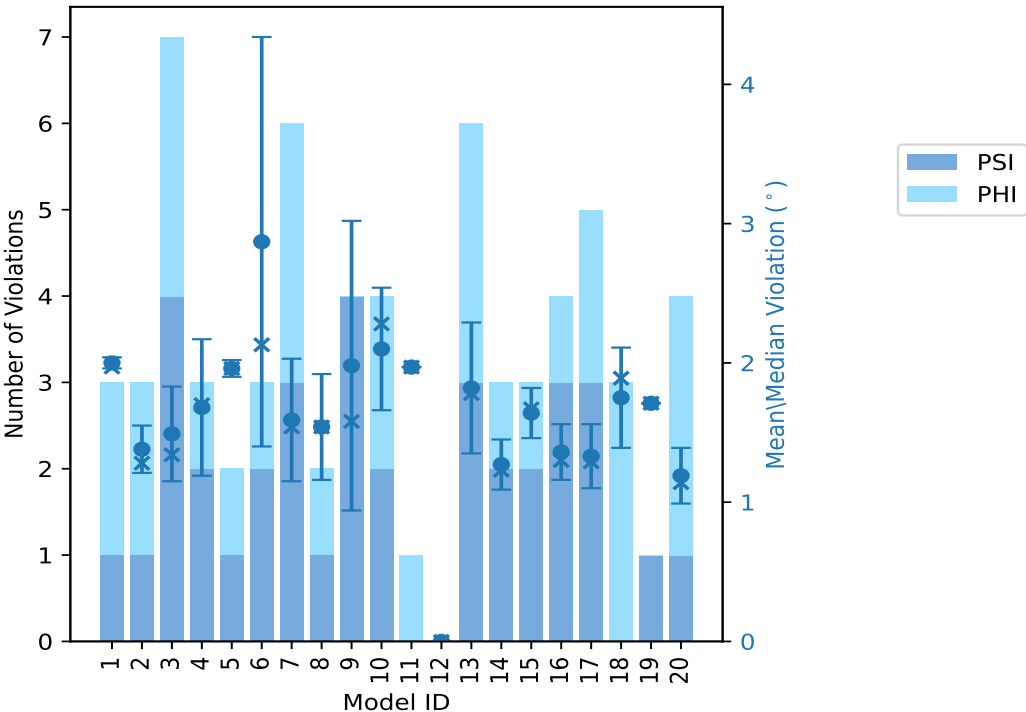
Violated and consistently violated restraints are shown using different hatch patterns in their respective categories

10.2 Dihedral-angle violation statistics for each model

The following table provides the dihedral-angle violation statistics for each model in the ensemble. Violations less than 1° are not included in the statistics.

Model ID	Number of violations			Mean (°)	Max (°)	SD (°)	Median (°)
	PSI	PHI	Total				
1	1	2	3	2.0	2.06	0.04	1.97
2	1	2	3	1.38	1.61	0.17	1.28
3	4	3	7	1.49	2.03	0.34	1.34
4	2	1	3	1.68	2.27	0.49	1.7
5	1	1	2	1.96	2.03	0.06	1.96
6	2	1	3	2.87	4.93	1.47	2.13
7	3	3	6	1.59	2.15	0.44	1.54
8	1	1	2	1.54	1.91	0.38	1.54
9	4	0	4	1.98	3.72	1.04	1.58
10	2	2	4	2.1	2.47	0.44	2.28
11	0	1	1	1.97	1.97	0.0	1.97
12	0	0	0	0.0	0.0	0.0	0.0
13	3	3	6	1.82	2.37	0.47	1.78
14	2	1	3	1.27	1.51	0.18	1.23
15	2	1	3	1.64	1.84	0.18	1.67
16	3	1	4	1.36	1.67	0.2	1.3
17	3	2	5	1.33	1.68	0.23	1.29
18	0	3	3	1.75	2.1	0.36	1.89
19	1	0	1	1.71	1.71	0.0	1.71
20	1	3	4	1.19	1.48	0.2	1.14

10.2.1 Bar graph : Dihedral violation statistics for each model [i](#)



The mean(dot),median(x) and the standard deviation are shown in blue with respect to the y axis on the right

10.3 Dihedral-angle violation statistics for the ensemble [i](#)

Violation analysis may find that some restraints are violated in very few models and some are violated in most of models. The following table provides this information as number of violated restraints for a given fraction of ensemble.

Number of violated restraints			Fraction of the ensemble	
PSI	PHI	Total	Count ¹	%
6	4	10	1	5.0
3	2	5	2	10.0
3	1	4	3	15.0
0	0	0	4	20.0
0	1	1	5	25.0
0	0	0	6	30.0
1	1	2	7	35.0
1	1	2	8	40.0
0	0	0	9	45.0
0	0	0	10	50.0
0	0	0	11	55.0

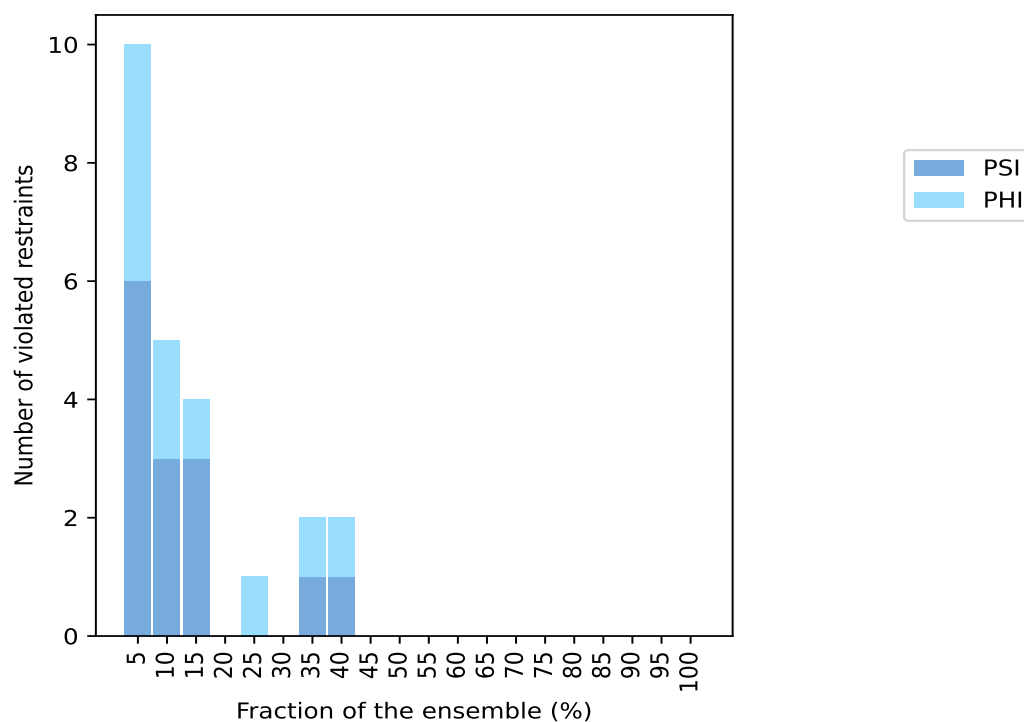
Continued on next page...

Continued from previous page...

Number of violated restraints			Fraction of the ensemble	
PSI	PHI	Total	Count ¹	%
0	0	0	12	60.0
0	0	0	13	65.0
0	0	0	14	70.0
0	0	0	15	75.0
0	0	0	16	80.0
0	0	0	17	85.0
0	0	0	18	90.0
0	0	0	19	95.0
0	0	0	20	100.0

¹ Number of models with violations

10.3.1 Bar graph : Dihedral-angle Violation statistics for the ensemble [i](#)

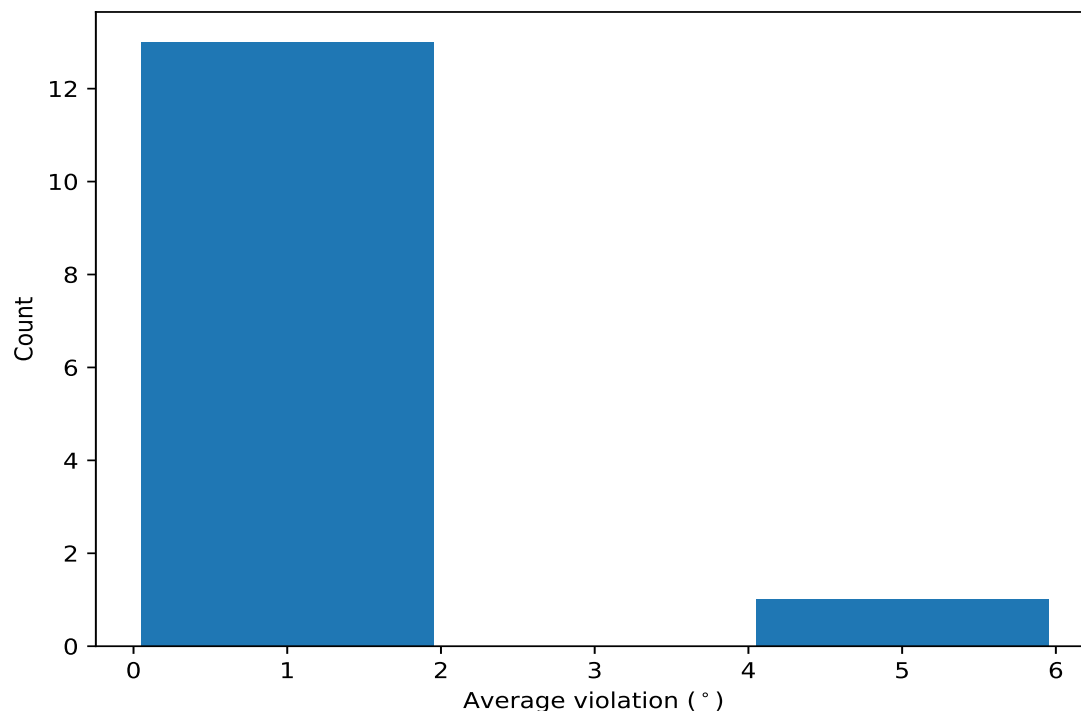


10.4 Most violated dihedral-angle restraints in the ensemble [i](#)

10.4.1 Histogram : Distribution of mean dihedral-angle violations [i](#)

The following histogram shows the distribution of the average value of the violation. The average is calculated for each restraint that is violated in more than one model over all the violated models

in the ensemble



10.4.2 Table: Most violated dihedral-angle restraints [i](#)

The following table provides the mean and the standard deviation of the violation for each restraint sorted by number of violated models and the mean value. The Key (restraint list ID, restraint ID) is the unique identifier for a given restraint.

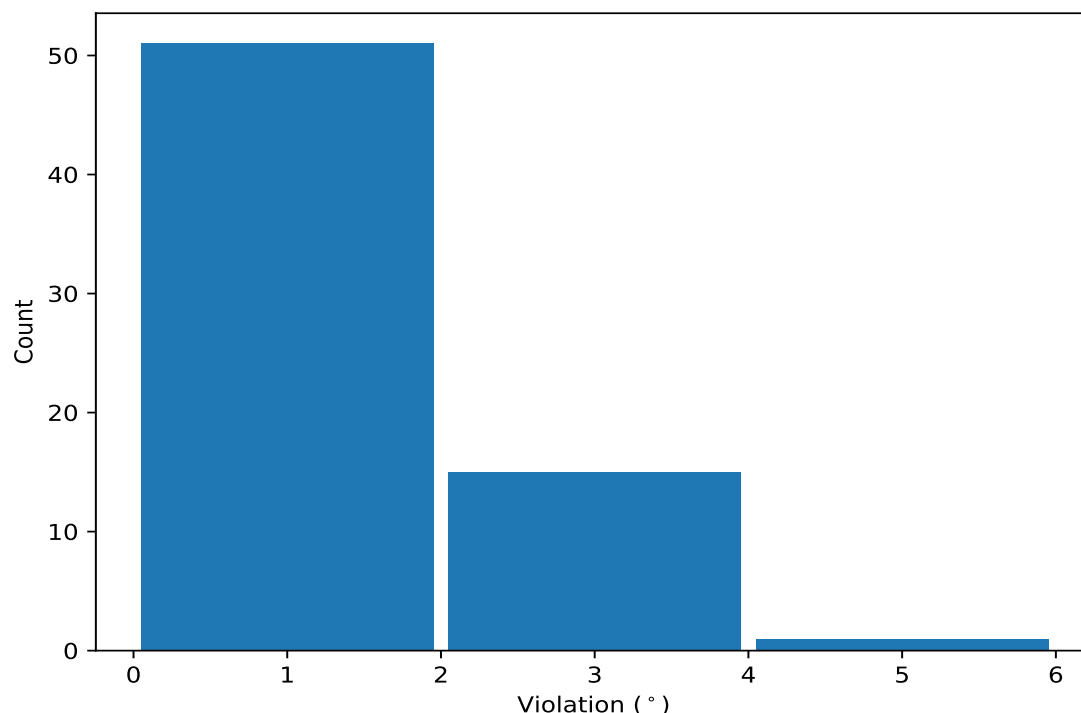
Key	Atom-1	Atom-2	Atom-3	Atom-4	Models ¹	Mean	SD ²	Median
(1,79)	1:78:A:VAL:C	1:79:A:CYS:N	1:79:A:CYS:CA	1:79:A:CYS:C	8	1.7	0.51	1.76
(1,94)	1:90:A:SER:N	1:90:A:SER:CA	1:90:A:SER:C	1:91:A:THR:N	8	1.69	0.45	1.6
(1,78)	1:78:A:VAL:N	1:78:A:VAL:CA	1:78:A:VAL:C	1:79:A:CYS:N	7	1.74	0.48	1.49
(1,51)	1:47:A:VAL:C	1:48:A:ASP:N	1:48:A:ASP:CA	1:48:A:ASP:C	7	1.73	0.31	1.89
(1,27)	1:29:A:GLY:C	1:30:A:ASN:N	1:30:A:ASN:CA	1:30:A:ASN:C	5	1.66	0.41	1.7
(1,63)	1:62:A:GLN:C	1:63:A:VAL:N	1:63:A:VAL:CA	1:63:A:VAL:C	3	1.39	0.1	1.44
(1,74)	1:76:A:THR:N	1:76:A:THR:CA	1:76:A:THR:C	1:77:A:ILE:N	3	1.27	0.28	1.08
(1,56)	1:53:A:ARG:N	1:53:A:ARG:CA	1:53:A:ARG:C	1:54:A:ILE:N	3	1.26	0.04	1.28
(1,42)	1:43:A:ASN:N	1:43:A:ASN:CA	1:43:A:ASN:C	1:44:A:LEU:N	3	1.21	0.11	1.16
(1,52)	1:48:A:ASP:N	1:48:A:ASP:CA	1:48:A:ASP:C	1:49:A:GLY:N	2	4.32	0.6	4.32
(1,75)	1:76:A:THR:C	1:77:A:ILE:N	1:77:A:ILE:CA	1:77:A:ILE:C	2	1.9	0.12	1.9
(1,55)	1:52:A:ILE:C	1:53:A:ARG:N	1:53:A:ARG:CA	1:53:A:ARG:C	2	1.85	0.18	1.85
(1,70)	1:66:A:LYS:N	1:66:A:LYS:CA	1:66:A:LYS:C	1:67:A:MET:N	2	1.78	0.07	1.78
(1,64)	1:63:A:VAL:N	1:63:A:VAL:CA	1:63:A:VAL:C	1:64:A:GLY:N	2	1.27	0.23	1.27

¹ Number of violated models, ²Standard deviation, All angle values are in degree (°)

10.5 All violated dihedral-angle restraints [i](#)

10.5.1 Histogram : Distribution of violations [i](#)

The following histogram shows the distribution of the absolute value of the violation for all violated restraints in the ensemble.



10.5.2 Table: All violated dihedral-angle restraints [i](#)

The following table lists the absolute value of the violation for each restraint in the ensemble sorted by its value. The Key (restraint list ID, restraint ID) is the unique identifier for a given restraint.

Key	Atom-1	Atom-2	Atom-3	Atom-4	Model ID	Violation (°)
(1,52)	1:48:A:ASP:N	1:48:A:ASP:CA	1:48:A:ASP:C	1:49:A:GLY:N	6	4.93
(1,52)	1:48:A:ASP:N	1:48:A:ASP:CA	1:48:A:ASP:C	1:49:A:GLY:N	9	3.72
(1,94)	1:90:A:SER:N	1:90:A:SER:CA	1:90:A:SER:C	1:91:A:THR:N	10	2.47
(1,79)	1:78:A:VAL:C	1:79:A:CYS:N	1:79:A:CYS:CA	1:79:A:CYS:C	10	2.4
(1,78)	1:78:A:VAL:N	1:78:A:VAL:CA	1:78:A:VAL:C	1:79:A:CYS:N	13	2.37
(1,79)	1:78:A:VAL:C	1:79:A:CYS:N	1:79:A:CYS:CA	1:79:A:CYS:C	13	2.34
(1,78)	1:78:A:VAL:N	1:78:A:VAL:CA	1:78:A:VAL:C	1:79:A:CYS:N	4	2.27
(1,78)	1:78:A:VAL:N	1:78:A:VAL:CA	1:78:A:VAL:C	1:79:A:CYS:N	10	2.17
(1,62)	1:56:A:GLU:N	1:56:A:GLU:CA	1:56:A:GLU:C	1:57:A:ASP:N	7	2.15
(1,94)	1:90:A:SER:N	1:90:A:SER:CA	1:90:A:SER:C	1:91:A:THR:N	6	2.13
(1,27)	1:29:A:GLY:C	1:30:A:ASN:N	1:30:A:ASN:CA	1:30:A:ASN:C	13	2.11
(1,51)	1:47:A:VAL:C	1:48:A:ASP:N	1:48:A:ASP:CA	1:48:A:ASP:C	7	2.1
(1,27)	1:29:A:GLY:C	1:30:A:ASN:N	1:30:A:ASN:CA	1:30:A:ASN:C	18	2.1
(1,94)	1:90:A:SER:N	1:90:A:SER:CA	1:90:A:SER:C	1:91:A:THR:N	1	2.06

Continued on next page...

Continued from previous page...

Key	Atom-1	Atom-2	Atom-3	Atom-4	Model ID	Violation (°)
(1,75)	1:76:A:THR:C	1:77:A:ILE:N	1:77:A:ILE:CA	1:77:A:ILE:C	5	2.03
(1,55)	1:52:A:ILE:C	1:53:A:ARG:N	1:53:A:ARG:CA	1:53:A:ARG:C	3	2.03
(1,79)	1:78:A:VAL:C	1:79:A:CYS:N	1:79:A:CYS:CA	1:79:A:CYS:C	1	1.97
(1,51)	1:47:A:VAL:C	1:48:A:ASP:N	1:48:A:ASP:CA	1:48:A:ASP:C	11	1.97
(1,51)	1:47:A:VAL:C	1:48:A:ASP:N	1:48:A:ASP:CA	1:48:A:ASP:C	3	1.96
(1,15)	1:16:A:GLY:C	1:17:A:LYS:N	1:17:A:LYS:CA	1:17:A:LYS:C	1	1.96
(1,79)	1:78:A:VAL:C	1:79:A:CYS:N	1:79:A:CYS:CA	1:79:A:CYS:C	8	1.91
(1,12)	1:13:A:SER:N	1:13:A:SER:CA	1:13:A:SER:C	1:14:A:GLN:N	5	1.9
(1,51)	1:47:A:VAL:C	1:48:A:ASP:N	1:48:A:ASP:CA	1:48:A:ASP:C	18	1.89
(1,70)	1:66:A:LYS:N	1:66:A:LYS:CA	1:66:A:LYS:C	1:67:A:MET:N	15	1.84
(1,22)	1:20:A:ARG:N	1:20:A:ARG:CA	1:20:A:ARG:C	1:21:A:GLU:N	9	1.81
(1,75)	1:76:A:THR:C	1:77:A:ILE:N	1:77:A:ILE:CA	1:77:A:ILE:C	7	1.78
(1,70)	1:66:A:LYS:N	1:66:A:LYS:CA	1:66:A:LYS:C	1:67:A:MET:N	19	1.71
(1,27)	1:29:A:GLY:C	1:30:A:ASN:N	1:30:A:ASN:CA	1:30:A:ASN:C	4	1.7
(1,94)	1:90:A:SER:N	1:90:A:SER:CA	1:90:A:SER:C	1:91:A:THR:N	17	1.68
(1,74)	1:76:A:THR:N	1:76:A:THR:CA	1:76:A:THR:C	1:77:A:ILE:N	16	1.67
(1,55)	1:52:A:ILE:C	1:53:A:ARG:N	1:53:A:ARG:CA	1:53:A:ARG:C	15	1.67
(1,79)	1:78:A:VAL:C	1:79:A:CYS:N	1:79:A:CYS:CA	1:79:A:CYS:C	2	1.61
(1,51)	1:47:A:VAL:C	1:48:A:ASP:N	1:48:A:ASP:CA	1:48:A:ASP:C	6	1.56
(1,94)	1:90:A:SER:N	1:90:A:SER:CA	1:90:A:SER:C	1:91:A:THR:N	14	1.51
(1,64)	1:63:A:VAL:N	1:63:A:VAL:CA	1:63:A:VAL:C	1:64:A:GLY:N	3	1.5
(1,78)	1:78:A:VAL:N	1:78:A:VAL:CA	1:78:A:VAL:C	1:79:A:CYS:N	17	1.49
(1,63)	1:62:A:GLN:C	1:63:A:VAL:N	1:63:A:VAL:CA	1:63:A:VAL:C	20	1.48
(1,63)	1:62:A:GLN:C	1:63:A:VAL:N	1:63:A:VAL:CA	1:63:A:VAL:C	13	1.44
(1,78)	1:78:A:VAL:N	1:78:A:VAL:CA	1:78:A:VAL:C	1:79:A:CYS:N	16	1.4
(1,54)	1:52:A:ILE:N	1:52:A:ILE:CA	1:52:A:ILE:C	1:53:A:ARG:N	15	1.4
(1,51)	1:47:A:VAL:C	1:48:A:ASP:N	1:48:A:ASP:CA	1:48:A:ASP:C	10	1.36
(1,42)	1:43:A:ASN:N	1:43:A:ASN:CA	1:43:A:ASN:C	1:44:A:LEU:N	13	1.36
(1,78)	1:78:A:VAL:N	1:78:A:VAL:CA	1:78:A:VAL:C	1:79:A:CYS:N	3	1.34
(1,28)	1:30:A:ASN:N	1:30:A:ASN:CA	1:30:A:ASN:C	1:31:A:GLU:N	9	1.34
(1,69)	1:65:A:VAL:C	1:66:A:LYS:N	1:66:A:LYS:CA	1:66:A:LYS:C	7	1.3
(1,56)	1:53:A:ARG:N	1:53:A:ARG:CA	1:53:A:ARG:C	1:54:A:ILE:N	17	1.29
(1,94)	1:90:A:SER:N	1:90:A:SER:CA	1:90:A:SER:C	1:91:A:THR:N	13	1.28
(1,56)	1:53:A:ARG:N	1:53:A:ARG:CA	1:53:A:ARG:C	1:54:A:ILE:N	2	1.28
(1,94)	1:90:A:SER:N	1:90:A:SER:CA	1:90:A:SER:C	1:91:A:THR:N	20	1.27
(1,63)	1:62:A:GLN:C	1:63:A:VAL:N	1:63:A:VAL:CA	1:63:A:VAL:C	18	1.25
(1,51)	1:47:A:VAL:C	1:48:A:ASP:N	1:48:A:ASP:CA	1:48:A:ASP:C	2	1.24
(1,27)	1:29:A:GLY:C	1:30:A:ASN:N	1:30:A:ASN:CA	1:30:A:ASN:C	14	1.23
(1,79)	1:78:A:VAL:C	1:79:A:CYS:N	1:79:A:CYS:CA	1:79:A:CYS:C	3	1.22
(1,56)	1:53:A:ARG:N	1:53:A:ARG:CA	1:53:A:ARG:C	1:54:A:ILE:N	16	1.21
(1,44)	1:44:A:LEU:N	1:44:A:LEU:CA	1:44:A:LEU:C	1:45:A:MET:N	3	1.21
(1,42)	1:43:A:ASN:N	1:43:A:ASN:CA	1:43:A:ASN:C	1:44:A:LEU:N	8	1.16
(1,27)	1:29:A:GLY:C	1:30:A:ASN:N	1:30:A:ASN:CA	1:30:A:ASN:C	16	1.16
(1,79)	1:78:A:VAL:C	1:79:A:CYS:N	1:79:A:CYS:CA	1:79:A:CYS:C	17	1.15
(1,94)	1:90:A:SER:N	1:90:A:SER:CA	1:90:A:SER:C	1:91:A:THR:N	3	1.14
(1,78)	1:78:A:VAL:N	1:78:A:VAL:CA	1:78:A:VAL:C	1:79:A:CYS:N	7	1.12
(1,42)	1:43:A:ASN:N	1:43:A:ASN:CA	1:43:A:ASN:C	1:44:A:LEU:N	7	1.11
(1,74)	1:76:A:THR:N	1:76:A:THR:CA	1:76:A:THR:C	1:77:A:ILE:N	14	1.08
(1,74)	1:76:A:THR:N	1:76:A:THR:CA	1:76:A:THR:C	1:77:A:ILE:N	4	1.07
(1,64)	1:63:A:VAL:N	1:63:A:VAL:CA	1:63:A:VAL:C	1:64:A:GLY:N	9	1.04
(1,61)	1:55:A:LYS:C	1:56:A:GLU:N	1:56:A:GLU:CA	1:56:A:GLU:C	17	1.03

Continued on next page...

Continued from previous page...

Key	Atom-1	Atom-2	Atom-3	Atom-4	Model ID	Violation (°)
(1,37)	1:34:A:THR:C	1:35:A:ILE:N	1:35:A:ILE:CA	1:35:A:ILE:C	20	1.01
(1,79)	1:78:A:VAL:C	1:79:A:CYS:N	1:79:A:CYS:CA	1:79:A:CYS:C	20	1.0