



## wwPDB EM Validation Summary Report ⓘ

May 25, 2025 – 03:22 PM EDT

PDB ID : 6N58 / pdb\_00006n58  
EMDB ID : EMD-0349  
Title : Cryo-EM structure of Escherichia coli RNAP polymerase bound with TraR in conformation II  
Authors : Chen, J.; Chiu, C.E.; Campbell, E.A.; Darst, S.A.  
Deposited on : 2018-11-21  
Resolution : 3.78 Å(reported)

This is a wwPDB EM Validation Summary Report for a publicly released PDB entry.

We welcome your comments at [validation@mail.wwpdb.org](mailto:validation@mail.wwpdb.org)

A user guide is available at

<https://www.wwpdb.org/validation/2017/EMValidationReportHelp>  
with specific help available everywhere you see the ⓘ symbol.

The types of validation reports are described at

<http://www.wwpdb.org/validation/2017/FAQs#types>.

---

The following versions of software and data (see [references ⓘ](#)) were used in the production of this report:

EMDB validation analysis : 0.0.1.dev118  
Mogul : 2022.3.0, CSD as543be (2022)  
MolProbity : 4-5-2 with Phenix2.0rc1  
buster-report : 1.1.7 (2018)  
Percentile statistics : 20231227.v01 (using entries in the PDB archive December 27th 2023)  
MapQ : 1.9.13  
Ideal geometry (proteins) : Engh & Huber (2001)  
Ideal geometry (DNA, RNA) : Parkinson et al. (1996)  
Validation Pipeline (wwPDB-VP) : 2.43.1

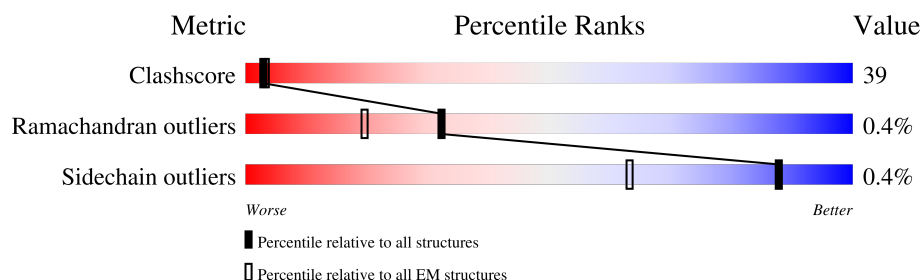
# 1 Overall quality at a glance

The following experimental techniques were used to determine the structure:

*ELECTRON MICROSCOPY*

The reported resolution of this entry is 3.78 Å.

Percentile scores (ranging between 0-100) for global validation metrics of the entry are shown in the following graphic. The table shows the number of entries on which the scores are based.



Metric	Whole archive (#Entries)	EM structures (#Entries)
Clashscore	210492	15764
Ramachandran outliers	207382	16835
Sidechain outliers	206894	16415

The table below summarises the geometric issues observed across the polymeric chains and their fit to the map. The red, orange, yellow and green segments of the bar indicate the fraction of residues that contain outliers for  $\geq 3$ , 2, 1 and 0 types of geometric quality criteria respectively. A grey segment represents the fraction of residues that are not modelled. The numeric value for each fraction is indicated below the corresponding segment, with a dot representing fractions  $\leq 5\%$ . The upper red bar (where present) indicates the fraction of residues that have poor fit to the EM map (all-atom inclusion  $< 40\%$ ). The numeric value is given above the bar.

Mol	Chain	Length	Quality of chain
1	G	329	
1	H	329	
2	I	1342	
3	J	1430	
4	K	91	
5	L	616	
6	M	72	

## 2 Entry composition

There are 9 unique types of molecules in this entry. The entry contains 30345 atoms, of which 156 are hydrogens and 0 are deuteriums.

In the tables below, the AltConf column contains the number of residues with at least one atom in alternate conformation and the Trace column contains the number of residues modelled with at most 2 atoms.

- Molecule 1 is a protein called DNA-directed RNA polymerase subunit alpha.

Mol	Chain	Residues	Atoms					AltConf	Trace
1	G	228	Total	C	N	O	S	0	0
			1766	1101	315	344	6		
1	H	219	Total	C	N	O	S	0	0
			1678	1048	295	329	6		

- Molecule 2 is a protein called DNA-directed RNA polymerase subunit beta.

Mol	Chain	Residues	Atoms					AltConf	Trace
2	I	1341	Total	C	N	O	S	0	0
			10577	6636	1842	2056	43		

- Molecule 3 is a protein called DNA-directed RNA polymerase subunit beta'.

Mol	Chain	Residues	Atoms					AltConf	Trace
3	J	1347	Total	C	N	O	S	0	0
			10479	6584	1869	1976	50		

There are 24 discrepancies between the modelled and reference sequences:

Chain	Residue	Modelled	Actual	Comment	Reference
J	1	VAL	-	expression tag	UNP P0A8T7
J	1408	LEU	-	expression tag	UNP P0A8T7
J	1409	GLU	-	expression tag	UNP P0A8T7
J	1410	LEU	-	expression tag	UNP P0A8T7
J	1411	GLU	-	expression tag	UNP P0A8T7
J	1412	VAL	-	expression tag	UNP P0A8T7
J	1413	LEU	-	expression tag	UNP P0A8T7
J	1414	PHE	-	expression tag	UNP P0A8T7
J	1415	GLN	-	expression tag	UNP P0A8T7
J	1416	GLY	-	expression tag	UNP P0A8T7
J	1417	PRO	-	expression tag	UNP P0A8T7
J	1418	SER	-	expression tag	UNP P0A8T7
J	1419	SER	-	expression tag	UNP P0A8T7

*Continued on next page...*

*Continued from previous page...*

Chain	Residue	Modelled	Actual	Comment	Reference
J	1420	GLY	-	expression tag	UNP P0A8T7
J	1421	HIS	-	expression tag	UNP P0A8T7
J	1422	HIS	-	expression tag	UNP P0A8T7
J	1423	HIS	-	expression tag	UNP P0A8T7
J	1424	HIS	-	expression tag	UNP P0A8T7
J	1425	HIS	-	expression tag	UNP P0A8T7
J	1426	HIS	-	expression tag	UNP P0A8T7
J	1427	HIS	-	expression tag	UNP P0A8T7
J	1428	HIS	-	expression tag	UNP P0A8T7
J	1429	HIS	-	expression tag	UNP P0A8T7
J	1430	HIS	-	expression tag	UNP P0A8T7

- Molecule 4 is a protein called DNA-directed RNA polymerase subunit omega.

Mol	Chain	Residues	Atoms					AltConf	Trace
4	K	79	Total	C	N	O	S	0	0
			627	382	118	126	1		

- Molecule 5 is a protein called RNA polymerase sigma factor RpoD.

Mol	Chain	Residues	Atoms					AltConf	Trace
5	L	547	Total	C	N	O	S	0	0
			4379	2738	773	842	26		

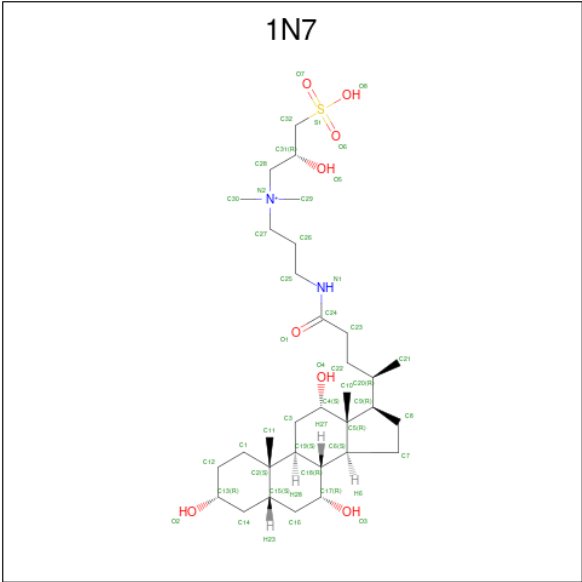
There are 3 discrepancies between the modelled and reference sequences:

Chain	Residue	Modelled	Actual	Comment	Reference
L	-2	SER	-	expression tag	UNP Q0P6L9
L	-1	GLU	-	expression tag	UNP Q0P6L9
L	0	PHE	-	expression tag	UNP Q0P6L9

- Molecule 6 is a protein called Protein TraR.

Mol	Chain	Residues	Atoms					AltConf	Trace
6	M	72	Total	C	N	O	S	0	0
			571	353	105	108	5		

- Molecule 7 is CHAPSO (CCD ID: 1N7) (formula: C<sub>32</sub>H<sub>59</sub>N<sub>2</sub>O<sub>8</sub>S).



Mol	Chain	Residues	Atoms				AltConf
7	I	1	Total	C	H	O	0
			66	24	39	3	
7	L	1	Total	C	H	O	0
			66	24	39	3	
7	L	1	Total	C	H	O	0
			66	24	39	3	
7	M	1	Total	C	H	O	0
			66	24	39	3	

- Molecule 8 is MAGNESIUM ION (CCD ID: MG) (formula: Mg).

Mol	Chain	Residues	Atoms		AltConf
8	J	1	Total	Mg	0
			1	1	

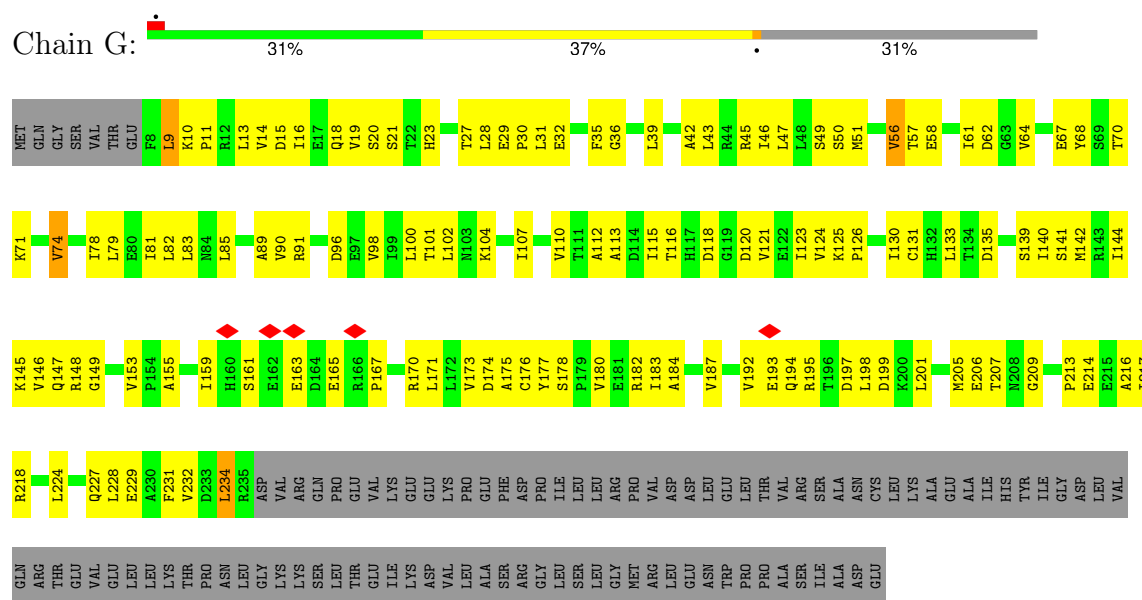
- Molecule 9 is ZINC ION (CCD ID: ZN) (formula: Zn).

Mol	Chain	Residues	Atoms		AltConf
9	J	2	Total	Zn	0
			2	2	
9	M	1	Total	Zn	0
			1	1	

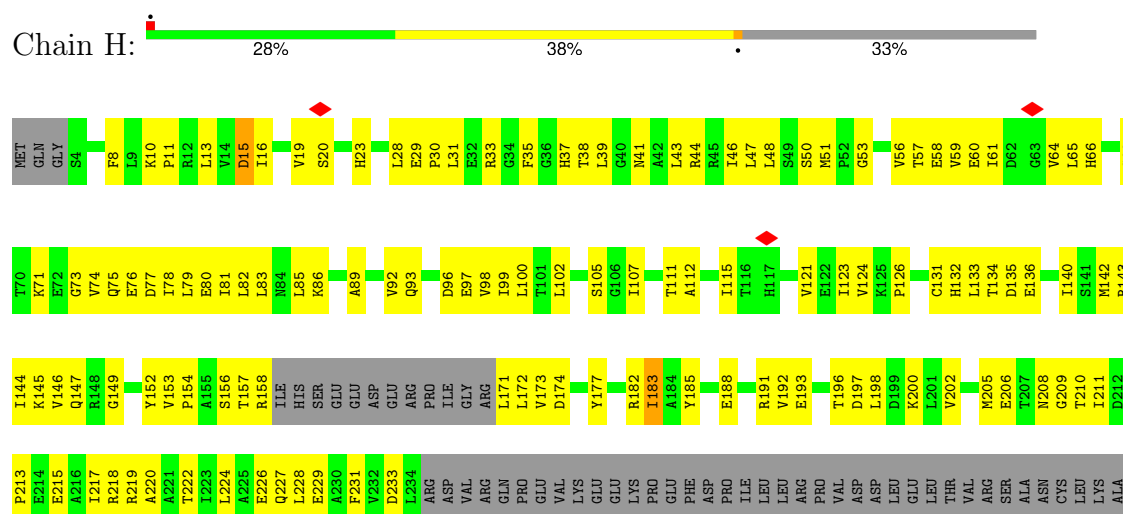
### 3 Residue-property plots

These plots are drawn for all protein, RNA, DNA and oligosaccharide chains in the entry. The first graphic for a chain summarises the proportions of the various outlier classes displayed in the second graphic. The second graphic shows the sequence view annotated by issues in geometry and atom inclusion in map density. Residues are color-coded according to the number of geometric quality criteria for which they contain at least one outlier: green = 0, yellow = 1, orange = 2 and red = 3 or more. A red diamond above a residue indicates a poor fit to the EM map for this residue (all-atom inclusion < 40%). Stretches of 2 or more consecutive residues without any outlier are shown as a green connector. Residues present in the sample, but not in the model, are shown in grey.

#### • Molecule 1: DNA-directed RNA polymerase subunit alpha



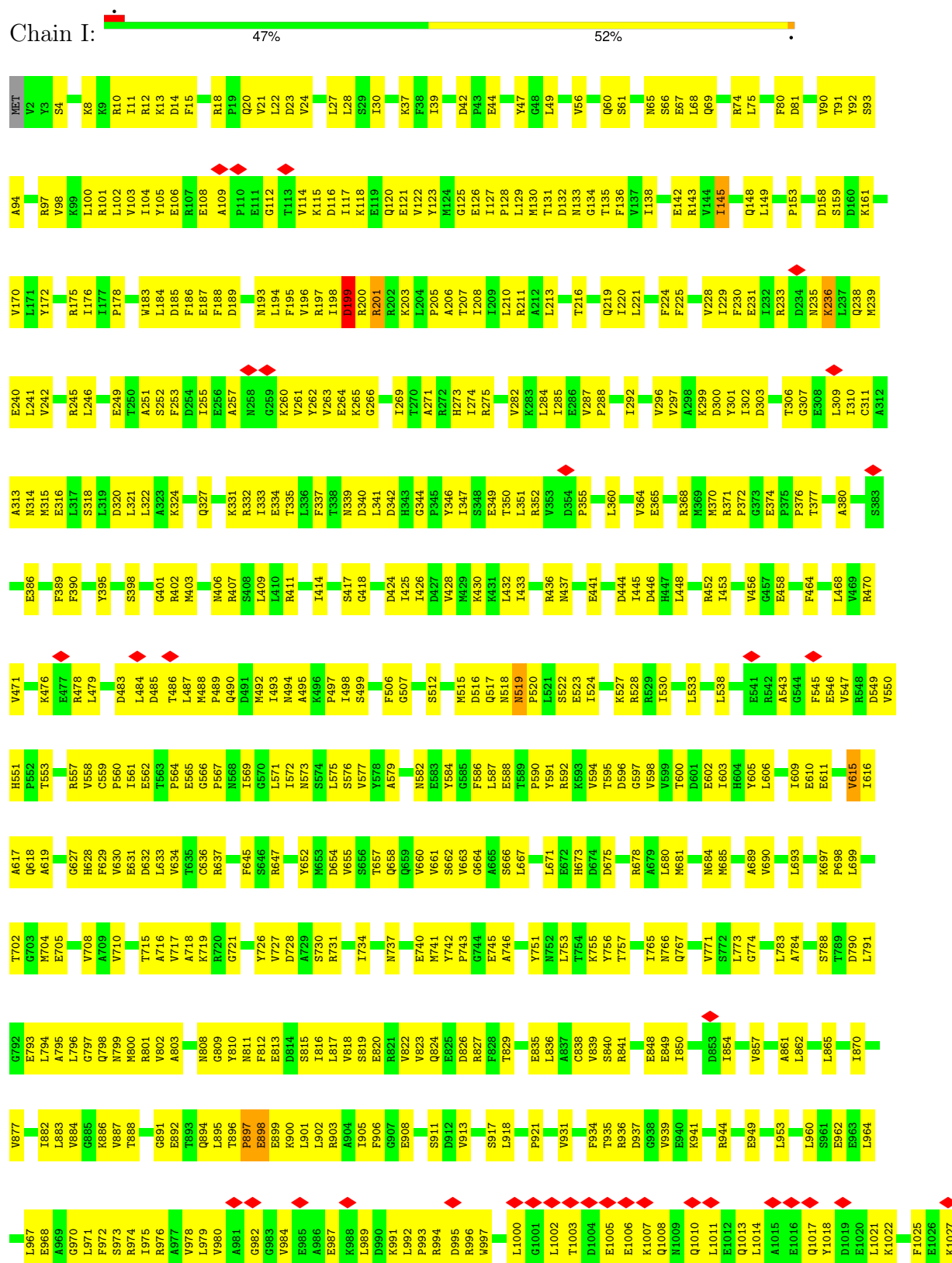
#### • Molecule 1: DNA-directed RNA polymerase subunit alpha

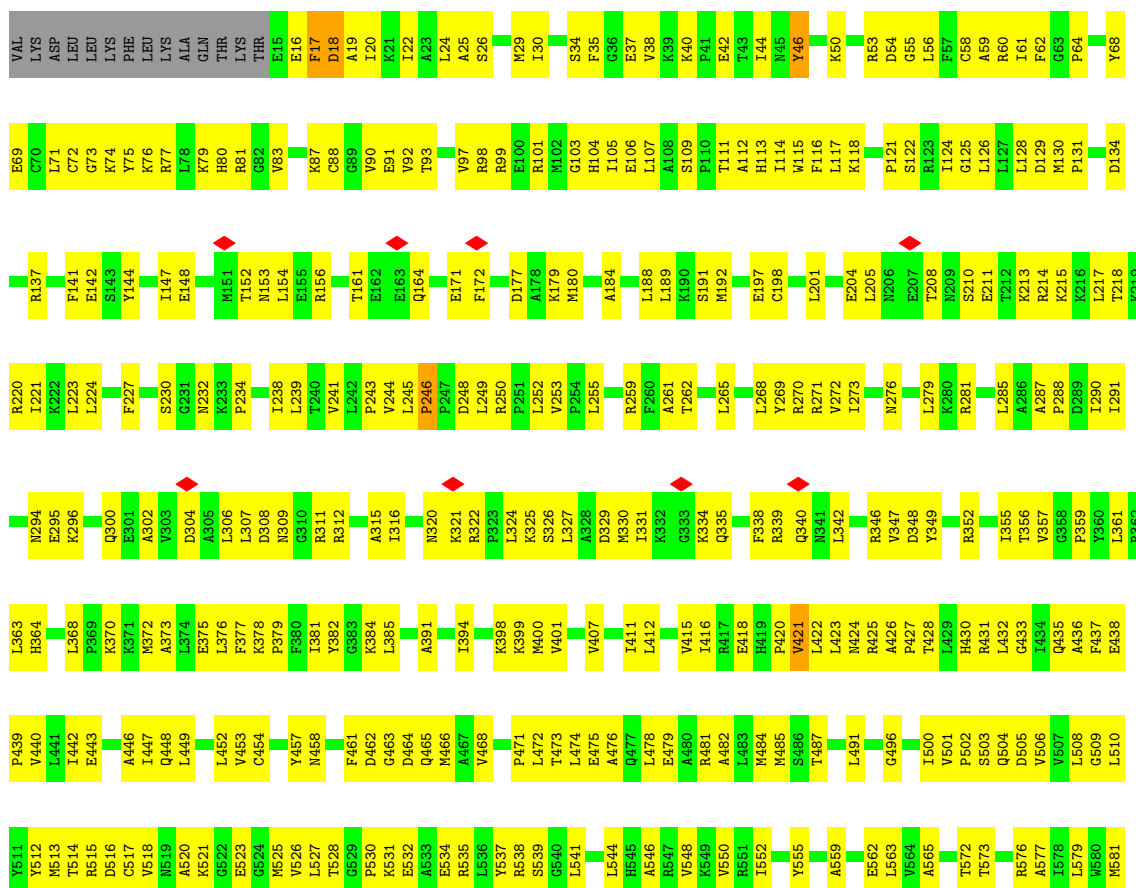


GLU	ALA	ILE	HIS	TVR	ILE	GLY	ASP	VAL	GLN	ARG	THR	GLU	VAL	GLU	LEU	LEU	LYS	THR	PRO	ASN	LEU	GLY	LYS	LYS	SER	THR	GLU	GLY	ILE	LYS	ASP	VAL	VAL	ALA	SER	ARG	GLY	LEU	SER	LEU	ASP	TRP	PRO	ALA	ILE	ALA	ASP	GLU
-----	-----	-----	-----	-----	-----	-----	-----	-----	-----	-----	-----	-----	-----	-----	-----	-----	-----	-----	-----	-----	-----	-----	-----	-----	-----	-----	-----	-----	-----	-----	-----	-----	-----	-----	-----	-----	-----	-----	-----	-----	-----	-----	-----	-----	-----	-----	-----	-----

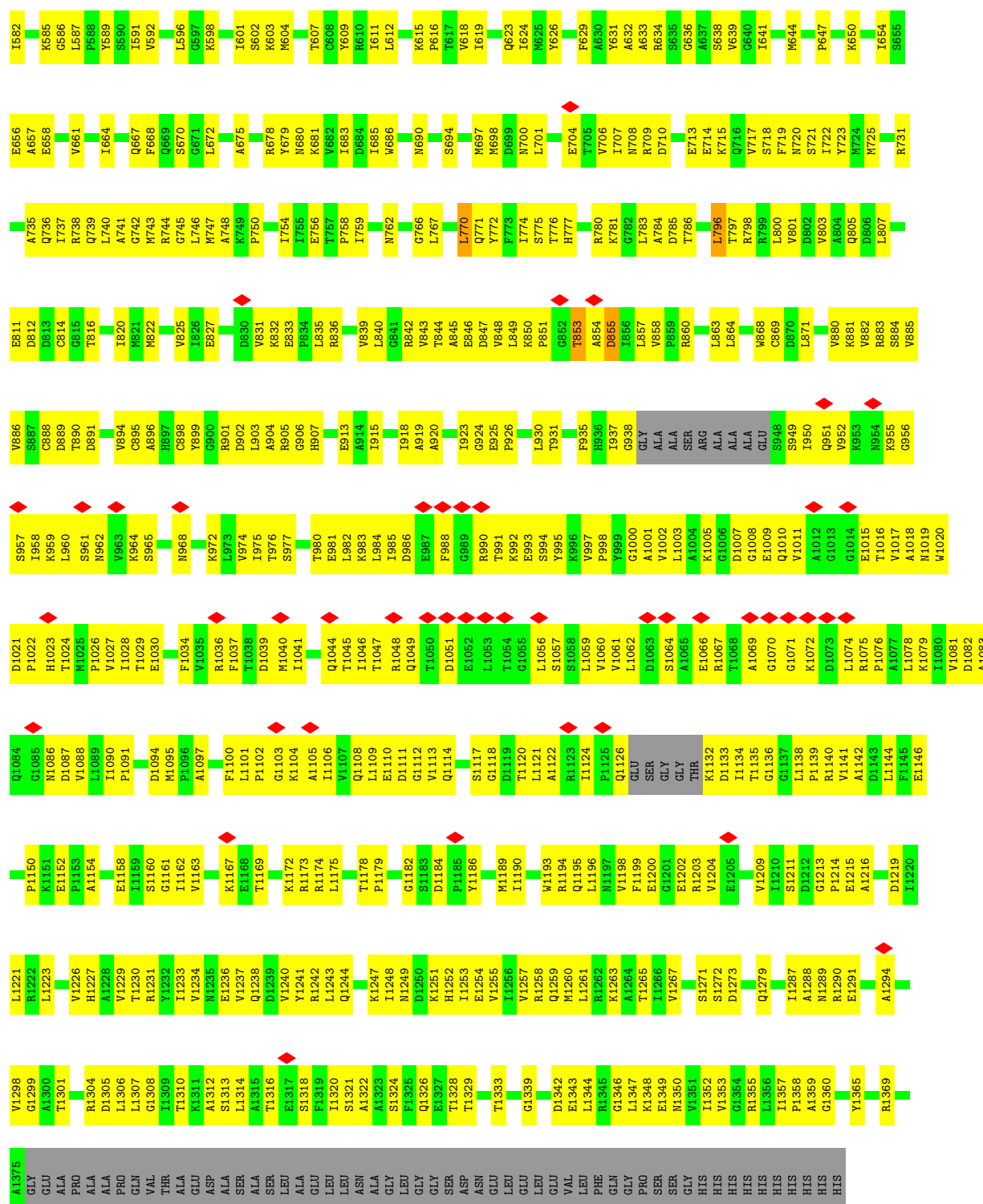
• Molecule 2: DNA-directed RNA polymerase subunit beta

Chain I:

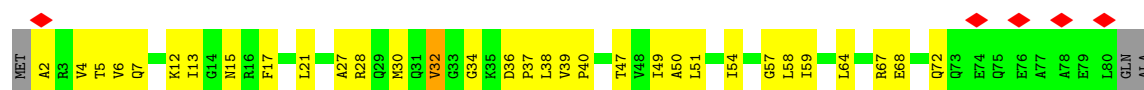








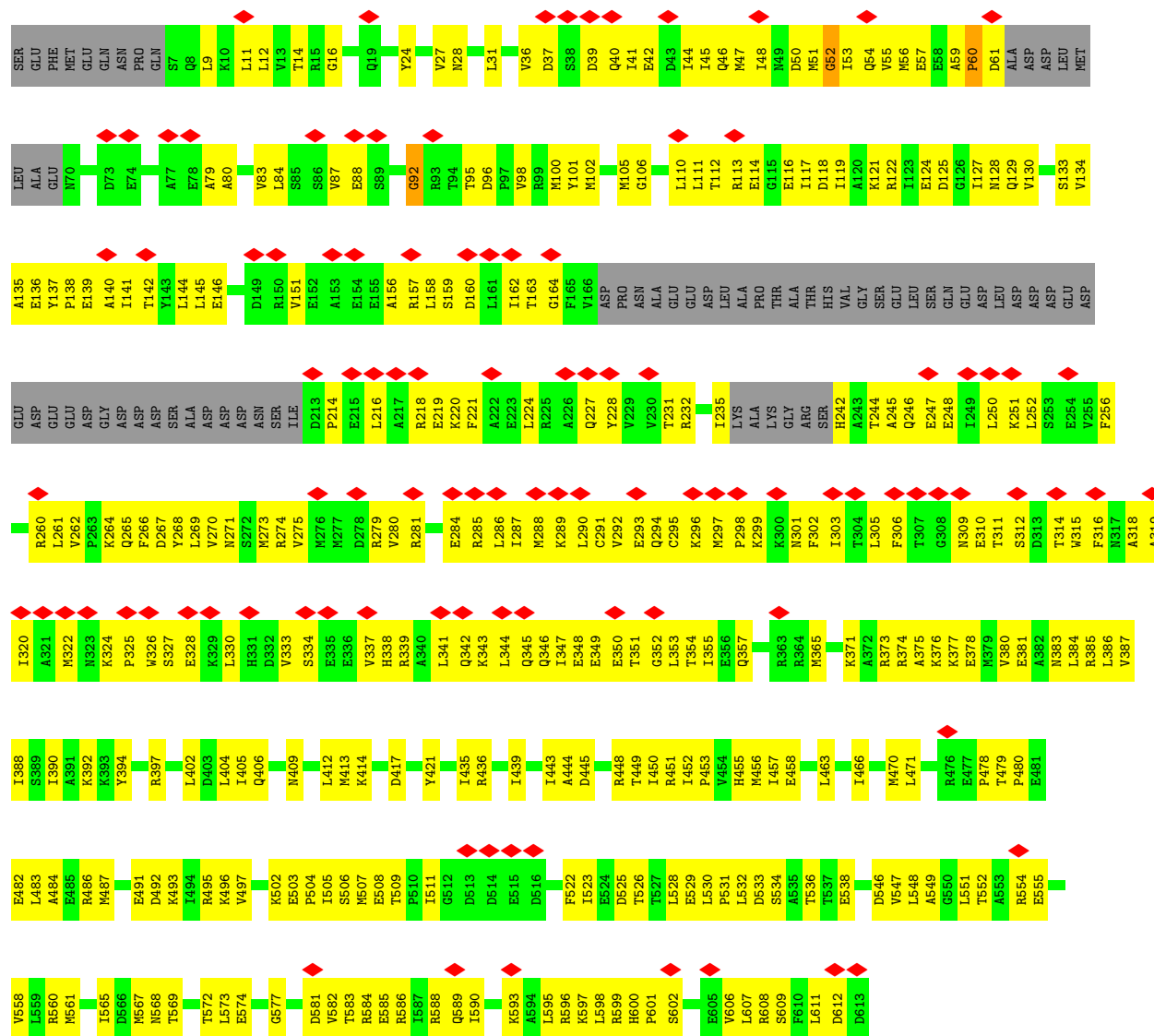
• Molecule 4: DNA-directed RNA polymerase subunit omega



VAL  
THR  
ALA  
ILE  
ALA  
GLU  
GLY  
ARG  
ARG

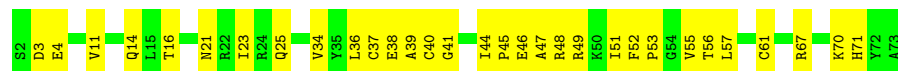
• Molecule 5: RNA polymerase sigma factor RpoD

Chain L: 



• Molecule 6: Protein TraR

Chain M: 



## 4 Experimental information

Property	Value	Source
EM reconstruction method	SINGLE PARTICLE	Depositor
Imposed symmetry	POINT, C1	Depositor
Number of particles used	123607	Depositor
Resolution determination method	FSC 0.143 CUT-OFF	Depositor
CTF correction method	PHASE FLIPPING AND AMPLITUDE CORRECTION	Depositor
Microscope	FEI TITAN KRIOS	Depositor
Voltage (kV)	300	Depositor
Electron dose ( $e^-/\text{\AA}^2$ )	1.42	Depositor
Minimum defocus (nm)	Not provided	
Maximum defocus (nm)	Not provided	
Magnification	Not provided	
Image detector	GATAN K2 SUMMIT (4k x 4k)	Depositor
Maximum map value	0.204	Depositor
Minimum map value	-0.145	Depositor
Average map value	0.000	Depositor
Map value standard deviation	0.006	Depositor
Recommended contour level	0.02	Depositor
Map size (Å)	332.8, 332.8, 332.8	wwPDB
Map dimensions	256, 256, 256	wwPDB
Map angles (°)	90.0, 90.0, 90.0	wwPDB
Pixel spacing (Å)	1.3, 1.3, 1.3	Depositor

## 5 Model quality

### 5.1 Standard geometry

Bond lengths and bond angles in the following residue types are not validated in this section: MG, ZN, 1N7

The Z score for a bond length (or angle) is the number of standard deviations the observed value is removed from the expected value. A bond length (or angle) with  $|Z| > 5$  is considered an outlier worth inspection. RMSZ is the root-mean-square of all Z scores of the bond lengths (or angles).

Mol	Chain	Bond lengths		Bond angles	
		RMSZ	# Z  >5	RMSZ	# Z  >5
1	G	0.58	0/1788	0.75	2/2423 (0.1%)
1	H	0.49	0/1697	0.70	1/2301 (0.0%)
2	I	0.59	0/10746	0.72	2/14499 (0.0%)
3	J	0.56	1/10638 (0.0%)	0.72	6/14362 (0.0%)
4	K	0.46	0/629	0.67	0/847
5	L	0.31	0/4435	0.60	4/5972 (0.1%)
6	M	0.51	0/581	0.71	0/785
All	All	0.53	1/30514 (0.0%)	0.70	15/41189 (0.0%)

Chiral center outliers are detected by calculating the chiral volume of a chiral center and verifying if the center is modelled as a planar moiety or with the opposite hand. A planarity outlier is detected by checking planarity of atoms in a peptide group, atoms in a mainchain group or atoms of a sidechain that are expected to be planar.

Mol	Chain	#Chirality outliers	#Planarity outliers
1	G	0	1
1	H	0	1
2	I	0	4
3	J	0	3
4	K	0	1
5	L	0	2
All	All	0	12

All (1) bond length outliers are listed below:

Mol	Chain	Res	Type	Atoms	Z	Observed(Å)	Ideal(Å)
3	J	246	PRO	C-N	-5.44	1.29	1.33

The worst 5 of 15 bond angle outliers are listed below:

Mol	Chain	Res	Type	Atoms	Z	Observed(°)	Ideal(°)
3	J	1024	THR	CA-C-N	8.96	143.66	121.80
3	J	1024	THR	C-N-CA	8.96	143.66	121.80
1	G	9	LEU	CA-C-N	-7.51	100.60	122.38
1	G	9	LEU	C-N-CA	-7.51	100.60	122.38
3	J	1094	ASP	CA-C-N	6.58	133.93	122.28

There are no chirality outliers.

5 of 12 planarity outliers are listed below:

Mol	Chain	Res	Type	Group
1	G	74	VAL	Peptide
1	H	15	ASP	Peptide
2	I	1134	GLN	Peptide
2	I	199	ASP	Peptide
2	I	236	LYS	Peptide

## 5.2 Too-close contacts

In the following table, the Non-H and H(model) columns list the number of non-hydrogen atoms and hydrogen atoms in the chain respectively. The H(added) column lists the number of hydrogen atoms added and optimized by MolProbity. The Clashes column lists the number of clashes within the asymmetric unit, whereas Symm-Clashes lists symmetry-related clashes.

Mol	Chain	Non-H	H(model)	H(added)	Clashes	Symm-Clashes
1	G	1766	0	1796	141	0
1	H	1678	0	1698	160	0
2	I	10577	0	10591	860	0
3	J	10479	0	10698	926	0
4	K	627	0	634	35	0
5	L	4379	0	4394	407	0
6	M	571	0	556	33	0
7	I	27	39	37	4	0
7	L	54	78	74	7	0
7	M	27	39	37	6	0
8	J	1	0	0	0	0
9	J	2	0	0	0	0
9	M	1	0	0	0	0
All	All	30189	156	30515	2354	0

The all-atom clashscore is defined as the number of clashes found per 1000 atoms (including hydrogen atoms). The all-atom clashscore for this structure is 39.

The worst 5 of 2354 close contacts within the same asymmetric unit are listed below, sorted by

their clash magnitude.

Atom-1	Atom-2	Interatomic distance (Å)	Clash overlap (Å)
7:I:1401:1N7:C3	7:I:1401:1N7:C19	1.84	1.54
7:M:102:1N7:C3	7:M:102:1N7:C19	1.81	1.54
7:L:701:1N7:C19	7:L:701:1N7:C3	1.82	1.53
7:L:702:1N7:C19	7:L:702:1N7:C3	1.82	1.50
2:I:960:LEU:HD11	2:I:1028:LYS:HE3	1.34	1.08

There are no symmetry-related clashes.

## 5.3 Torsion angles [i](#)

### 5.3.1 Protein backbone [i](#)

In the following table, the Percentiles column shows the percent Ramachandran outliers of the chain as a percentile score with respect to all PDB entries followed by that with respect to all EM entries.

The Analysed column shows the number of residues for which the backbone conformation was analysed, and the total number of residues.

Mol	Chain	Analysed	Favoured	Allowed	Outliers	Percentiles	
1	G	226/329 (69%)	181 (80%)	45 (20%)	0	100	100
1	H	215/329 (65%)	178 (83%)	36 (17%)	1 (0%)	25	58
2	I	1339/1342 (100%)	1115 (83%)	215 (16%)	9 (1%)	19	52
3	J	1341/1430 (94%)	1155 (86%)	181 (14%)	5 (0%)	30	63
4	K	77/91 (85%)	69 (90%)	8 (10%)	0	100	100
5	L	539/616 (88%)	474 (88%)	65 (12%)	0	100	100
6	M	70/72 (97%)	62 (89%)	8 (11%)	0	100	100
All	All	3807/4209 (90%)	3234 (85%)	558 (15%)	15 (0%)	32	63

5 of 15 Ramachandran outliers are listed below:

Mol	Chain	Res	Type
2	I	200	ARG
2	I	898	GLU
3	J	854	ALA
2	I	897	PRO
2	I	201	ARG

### 5.3.2 Protein sidechains ⓘ

In the following table, the Percentiles column shows the percent sidechain outliers of the chain as a percentile score with respect to all PDB entries followed by that with respect to all EM entries.

The Analysed column shows the number of residues for which the sidechain conformation was analysed, and the total number of residues.

Mol	Chain	Analysed	Rotameric	Outliers	Percentiles	
1	G	195/286 (68%)	193 (99%)	2 (1%)	73	81
1	H	184/286 (64%)	183 (100%)	1 (0%)	86	91
2	I	1156/1157 (100%)	1152 (100%)	4 (0%)	91	94
3	J	1129/1189 (95%)	1125 (100%)	4 (0%)	89	93
4	K	67/75 (89%)	67 (100%)	0	100	100
5	L	472/543 (87%)	471 (100%)	1 (0%)	92	95
6	M	61/61 (100%)	61 (100%)	0	100	100
All	All	3264/3597 (91%)	3252 (100%)	12 (0%)	88	93

5 of 12 residues with a non-rotameric sidechain are listed below:

Mol	Chain	Res	Type
3	J	421	VAL
3	J	770	LEU
5	L	505	ILE
3	J	796	LEU
2	I	145	ILE

Sometimes sidechains can be flipped to improve hydrogen bonding and reduce clashes. 5 of 59 such sidechains are listed below:

Mol	Chain	Res	Type
2	I	1264	GLN
5	L	464	ASN
3	J	690	ASN
5	L	383	ASN
5	L	227	GLN

### 5.3.3 RNA ⓘ

There are no RNA molecules in this entry.

## 5.4 Non-standard residues in protein, DNA, RNA chains [i](#)

There are no non-standard protein/DNA/RNA residues in this entry.

## 5.5 Carbohydrates [i](#)

There are no oligosaccharides in this entry.

## 5.6 Ligand geometry [i](#)

Of 8 ligands modelled in this entry, 4 are monoatomic - leaving 4 for Mogul analysis.

In the following table, the Counts columns list the number of bonds (or angles) for which Mogul statistics could be retrieved, the number of bonds (or angles) that are observed in the model and the number of bonds (or angles) that are defined in the Chemical Component Dictionary. The Link column lists molecule types, if any, to which the group is linked. The Z score for a bond length (or angle) is the number of standard deviations the observed value is removed from the expected value. A bond length (or angle) with  $|Z| > 2$  is considered an outlier worth inspection. RMSZ is the root-mean-square of all Z scores of the bond lengths (or angles).

Mol	Type	Chain	Res	Link	Bond lengths			Bond angles		
					Counts	RMSZ	# $ Z  > 2$	Counts	RMSZ	# $ Z  > 2$
7	1N7	I	1401	-	30,30,46	5.16	16 (53%)	47,48,72	2.78	19 (40%)
7	1N7	M	102	-	30,30,46	5.03	14 (46%)	47,48,72	2.48	18 (38%)
7	1N7	L	701	-	30,30,46	5.08	15 (50%)	47,48,72	2.15	15 (31%)
7	1N7	L	702	-	30,30,46	5.09	15 (50%)	47,48,72	2.37	14 (29%)

In the following table, the Chirals column lists the number of chiral outliers, the number of chiral centers analysed, the number of these observed in the model and the number defined in the Chemical Component Dictionary. Similar counts are reported in the Torsion and Rings columns. '-' means no outliers of that kind were identified.

Mol	Type	Chain	Res	Link	Chirals	Torsions	Rings
7	1N7	I	1401	-	-	6/7/72/92	0/4/4/4
7	1N7	M	102	-	-	1/7/72/92	0/4/4/4
7	1N7	L	701	-	-	4/7/72/92	0/4/4/4
7	1N7	L	702	-	-	7/7/72/92	0/4/4/4

The worst 5 of 60 bond length outliers are listed below:

Mol	Chain	Res	Type	Atoms	Z	Observed(Å)	Ideal(Å)
7	I	1401	1N7	C3-C19	18.76	1.84	1.53

*Continued on next page...*



*Continued from previous page...*

Mol	Chain	Res	Type	Atoms	Z	Observed(Å)	Ideal(Å)
7	L	702	1N7	C3-C19	18.03	1.82	1.53
7	L	701	1N7	C3-C19	17.96	1.82	1.53
7	M	102	1N7	C3-C19	17.08	1.81	1.53
7	L	701	1N7	C3-C4	12.04	1.72	1.53

The worst 5 of 66 bond angle outliers are listed below:

Mol	Chain	Res	Type	Atoms	Z	Observed(°)	Ideal(°)
7	M	102	1N7	C3-C19-C18	-8.10	98.91	110.89
7	I	1401	1N7	C9-C5-C4	-8.08	110.39	117.67
7	L	702	1N7	C9-C5-C4	-6.83	111.52	117.67
7	I	1401	1N7	C11-C2-C1	-6.28	98.32	108.31
7	L	701	1N7	C9-C5-C4	-6.19	112.10	117.67

There are no chirality outliers.

5 of 18 torsion outliers are listed below:

Mol	Chain	Res	Type	Atoms
7	I	1401	1N7	C21-C20-C9-C5
7	I	1401	1N7	C22-C20-C9-C8
7	I	1401	1N7	C21-C20-C9-C8
7	I	1401	1N7	C22-C20-C9-C5
7	L	702	1N7	C9-C20-C22-C23

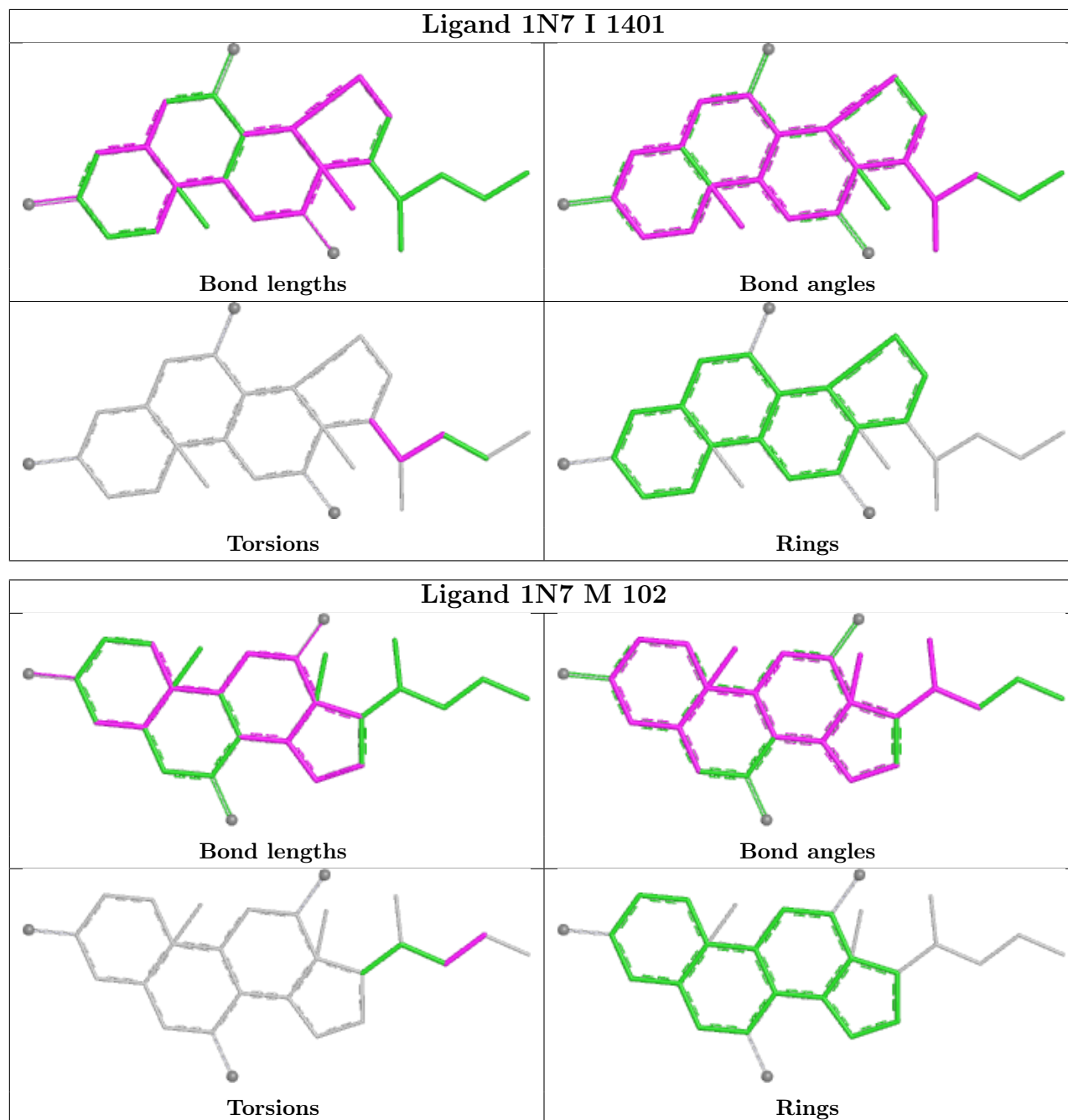
There are no ring outliers.

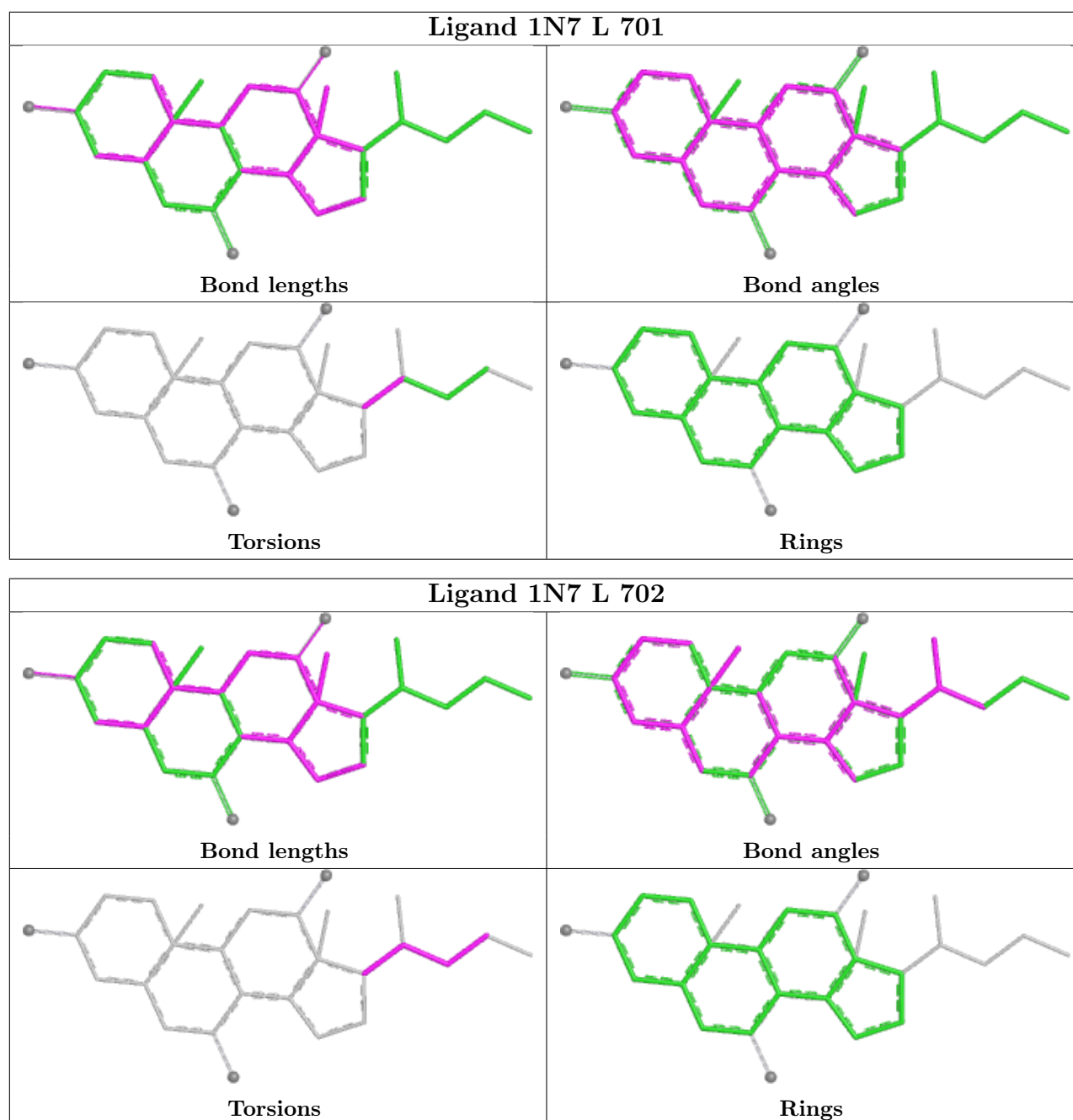
4 monomers are involved in 17 short contacts:

Mol	Chain	Res	Type	Clashes	Symm-Clashes
7	I	1401	1N7	4	0
7	M	102	1N7	6	0
7	L	701	1N7	3	0
7	L	702	1N7	4	0

The following is a two-dimensional graphical depiction of Mogul quality analysis of bond lengths, bond angles, torsion angles, and ring geometry for all instances of the Ligand of Interest. In addition, ligands with molecular weight > 250 and outliers as shown on the validation Tables will also be included. For torsion angles, if less than 5% of the Mogul distribution of torsion angles is within 10 degrees of the torsion angle in question, then that torsion angle is considered an outlier. Any bond that is central to one or more torsion angles identified as an outlier by Mogul will be highlighted in the graph. For rings, the root-mean-square deviation (RMSD) between the ring in question and similar rings identified by Mogul is calculated over all ring torsion angles. If the average RMSD is greater than 60 degrees and the minimal RMSD between the ring in question and

any Mogul-identified rings is also greater than 60 degrees, then that ring is considered an outlier. The outliers are highlighted in purple. The color gray indicates Mogul did not find sufficient equivalents in the CSD to analyse the geometry.





## 5.7 Other polymers [i](#)

There are no such residues in this entry.

## 5.8 Polymer linkage issues [i](#)

There are no chain breaks in this entry.

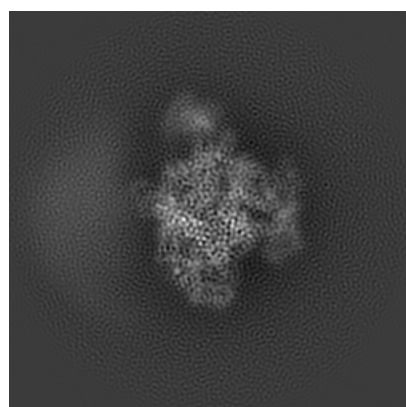
## 6 Map visualisation [i](#)

This section contains visualisations of the EMDB entry EMD-0349. These allow visual inspection of the internal detail of the map and identification of artifacts.

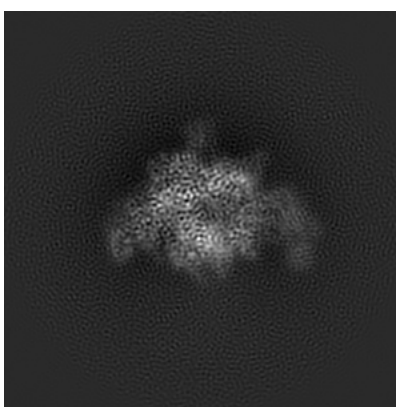
No raw map or half-maps were deposited for this entry and therefore no images, graphs, etc. pertaining to the raw map can be shown.

### 6.1 Orthogonal projections [i](#)

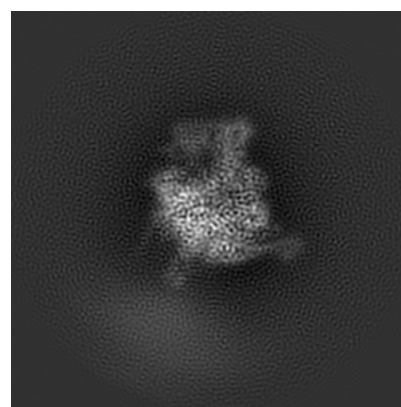
#### 6.1.1 Primary map



X



Y

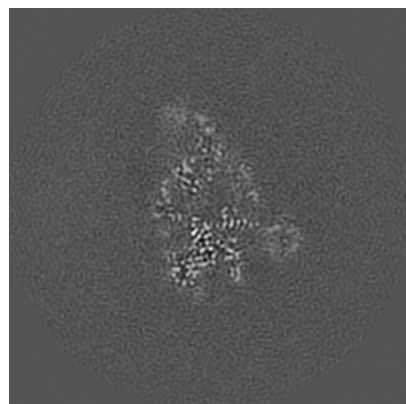


Z

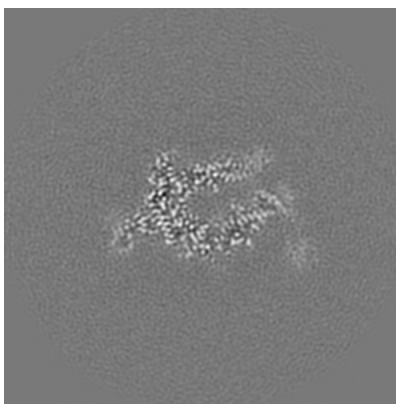
The images above show the map projected in three orthogonal directions.

### 6.2 Central slices [i](#)

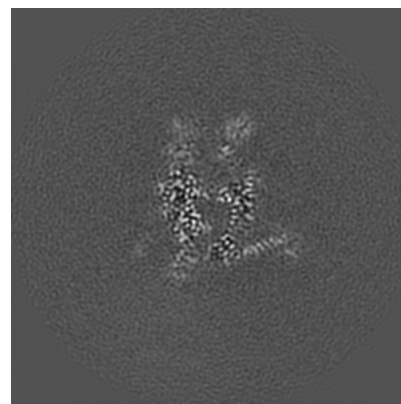
#### 6.2.1 Primary map



X Index: 128



Y Index: 128

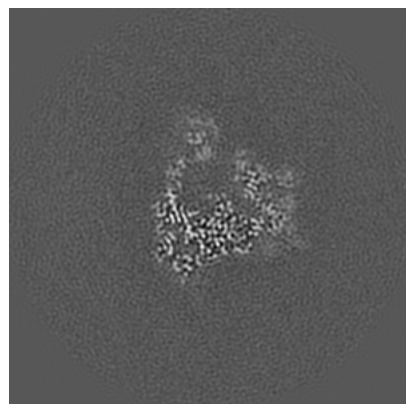


Z Index: 128

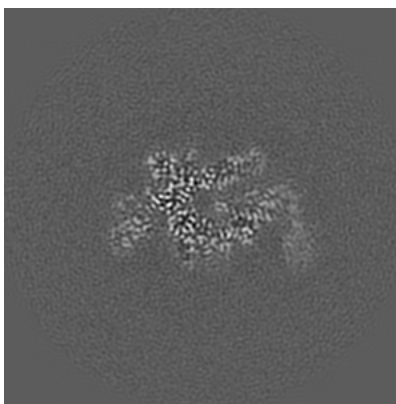
The images above show central slices of the map in three orthogonal directions.

## 6.3 Largest variance slices [i](#)

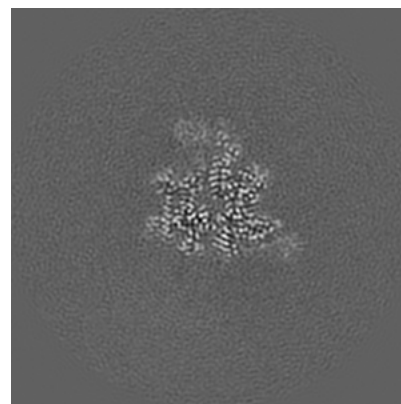
### 6.3.1 Primary map



X Index: 138



Y Index: 122

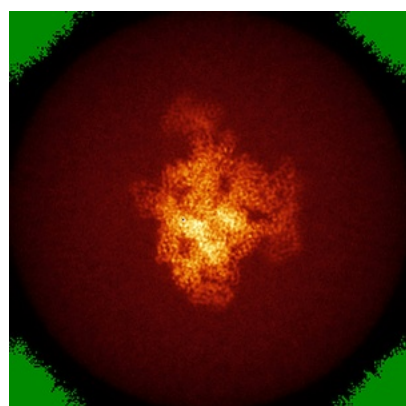


Z Index: 119

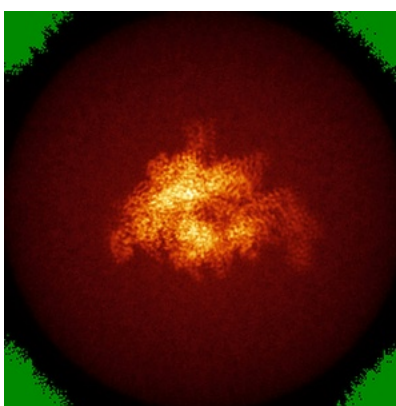
The images above show the largest variance slices of the map in three orthogonal directions.

## 6.4 Orthogonal standard-deviation projections (False-color) [i](#)

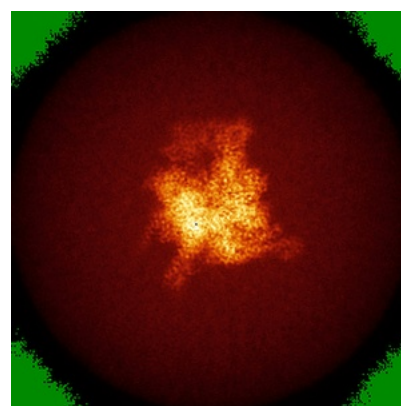
### 6.4.1 Primary map



X



Y

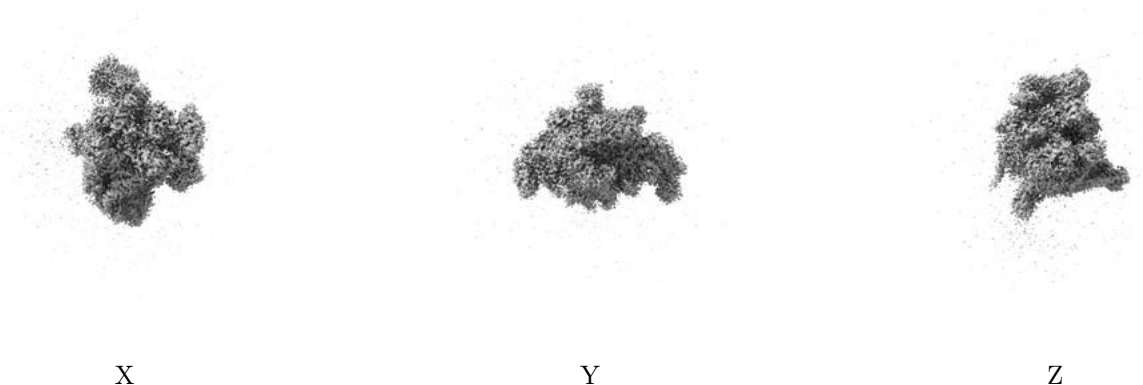


Z

The images above show the map standard deviation projections with false color in three orthogonal directions. Minimum values are shown in green, max in blue, and dark to light orange shades represent small to large values respectively.

## 6.5 Orthogonal surface views [i](#)

### 6.5.1 Primary map



The images above show the 3D surface view of the map at the recommended contour level 0.02. These images, in conjunction with the slice images, may facilitate assessment of whether an appropriate contour level has been provided.

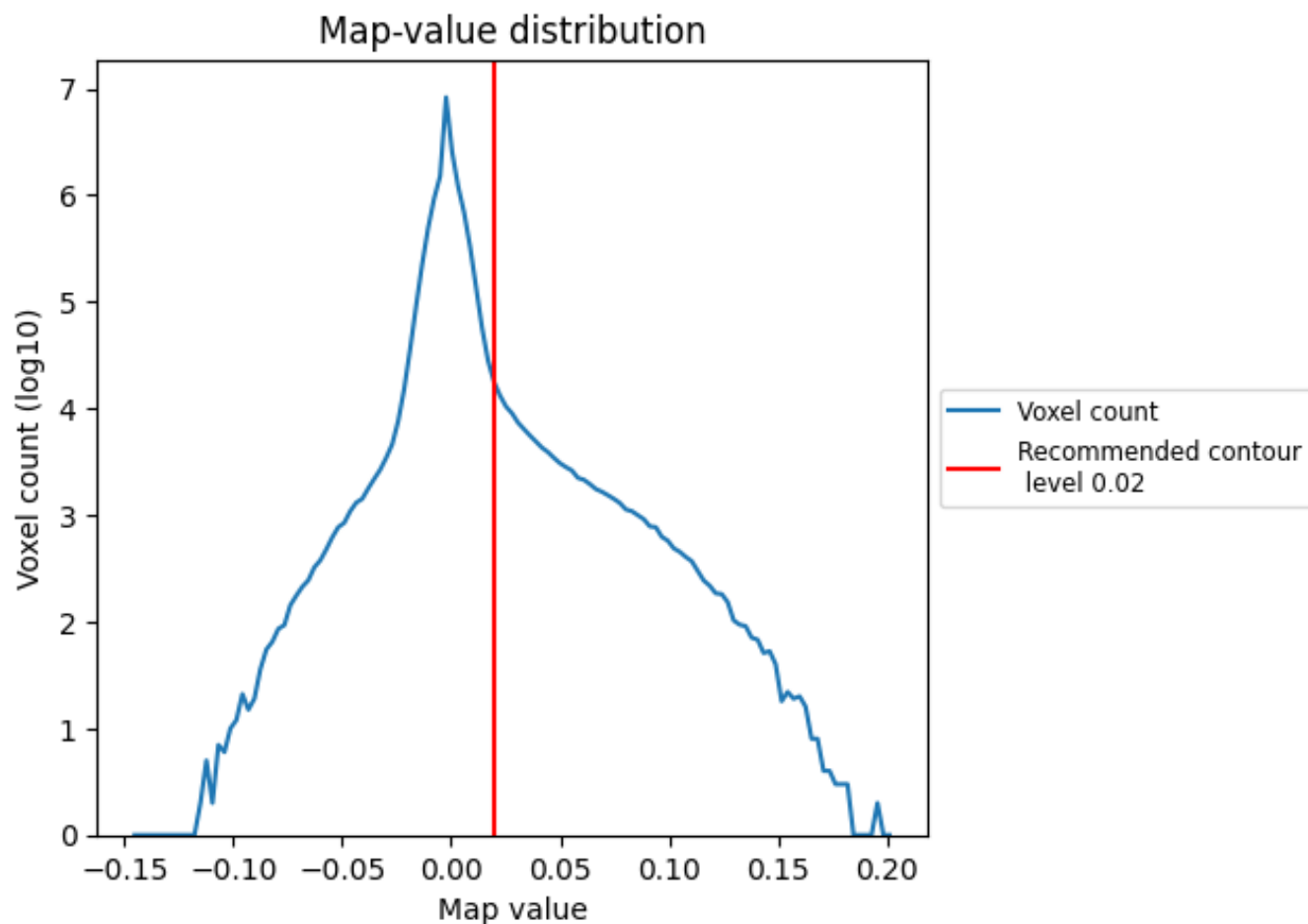
## 6.6 Mask visualisation [i](#)

This section was not generated. No masks/segmentation were deposited.

## 7 Map analysis [i](#)

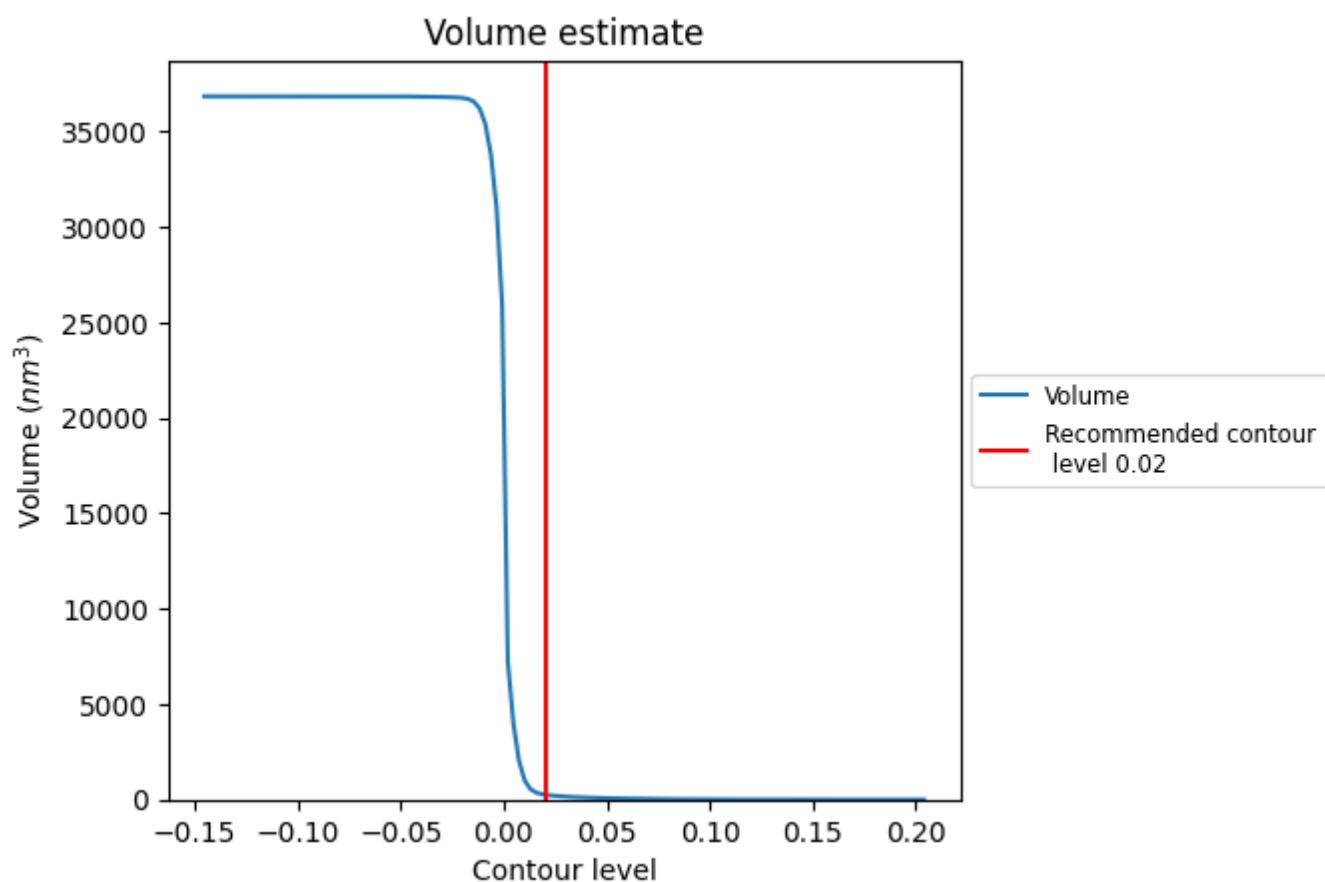
This section contains the results of statistical analysis of the map.

### 7.1 Map-value distribution [i](#)



The map-value distribution is plotted in 128 intervals along the x-axis. The y-axis is logarithmic. A spike in this graph at zero usually indicates that the volume has been masked.

## 7.2 Volume estimate [i](#)

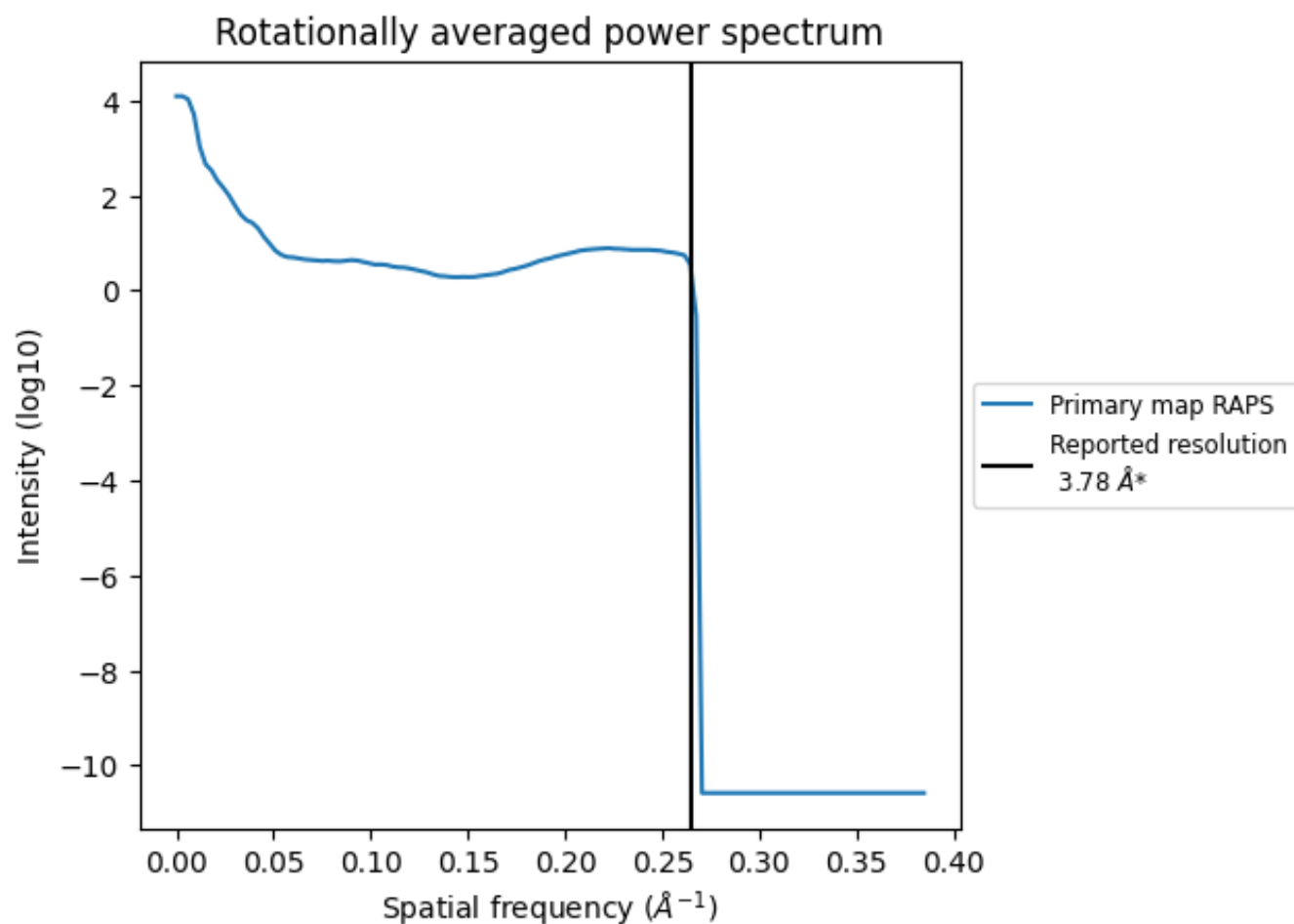


The volume at the recommended contour level is 259 nm<sup>3</sup>; this corresponds to an approximate mass of 234 kDa.

The volume estimate graph shows how the enclosed volume varies with the contour level. The recommended contour level is shown as a vertical line and the intersection between the line and the curve gives the volume of the enclosed surface at the given level.



### 7.3 Rotationally averaged power spectrum ⓘ

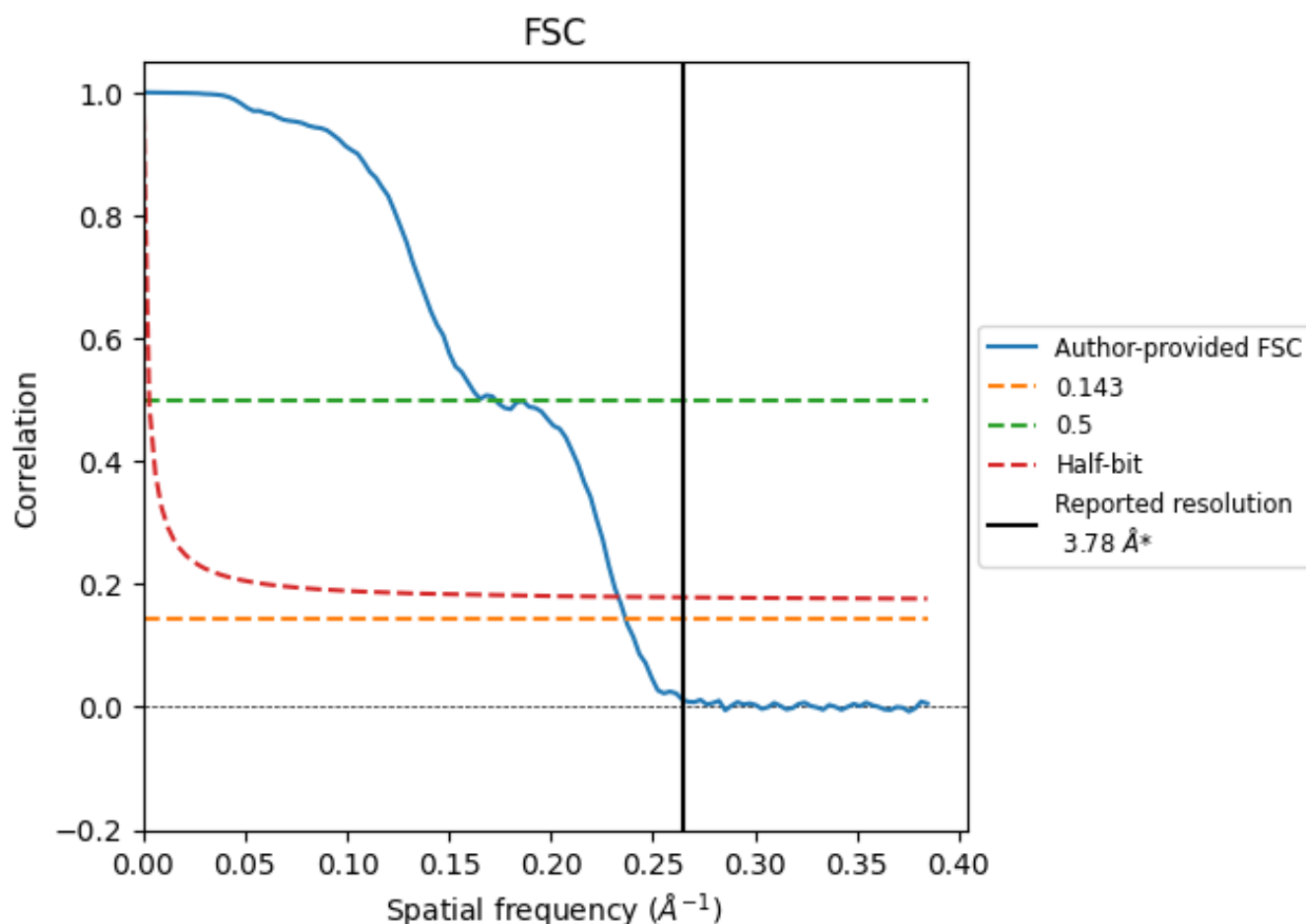


\*Reported resolution corresponds to spatial frequency of 0.265  $\text{\AA}^{-1}$

## 8 Fourier-Shell correlation [i](#)

Fourier-Shell Correlation (FSC) is the most commonly used method to estimate the resolution of single-particle and subtomogram-averaged maps. The shape of the curve depends on the imposed symmetry, mask and whether or not the two 3D reconstructions used were processed from a common reference. The reported resolution is shown as a black line. A curve is displayed for the half-bit criterion in addition to lines showing the 0.143 gold standard cut-off and 0.5 cut-off.

### 8.1 FSC [i](#)



\*Reported resolution corresponds to spatial frequency of 0.265 Å<sup>-1</sup>

## 8.2 Resolution estimates [i](#)

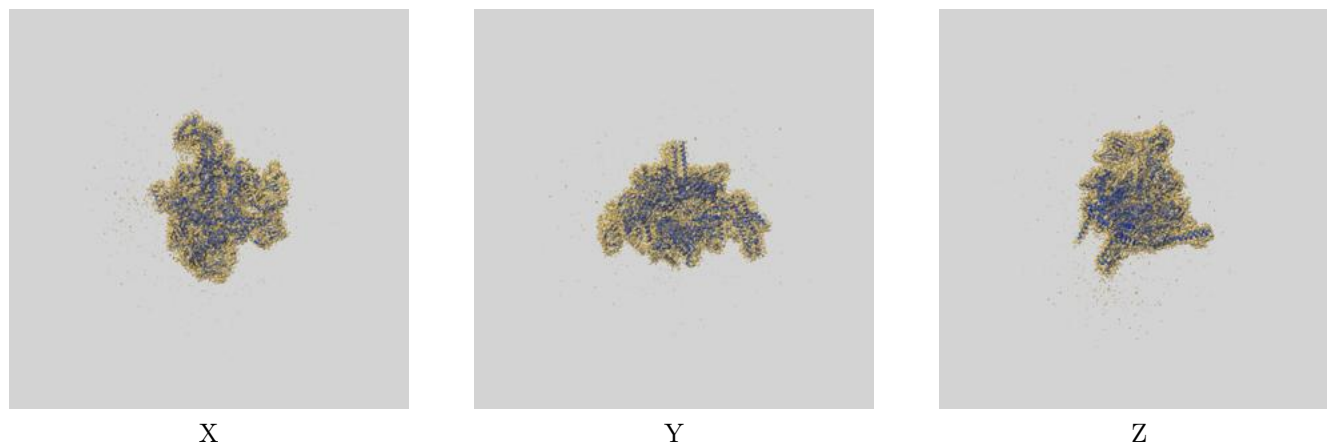
Resolution estimate (Å)	Estimation criterion (FSC cut-off)		
	0.143	0.5	Half-bit
Reported by author	3.78	-	-
Author-provided FSC curve	4.23	5.79	4.29
Unmasked-calculated*	-	-	-

\*Resolution estimate based on FSC curve calculated by comparison of deposited half-maps. The value from author-provided FSC intersecting FSC 0.143 CUT-OFF 4.23 differs from the reported value 3.78 by more than 10 %

## 9 Map-model fit [i](#)

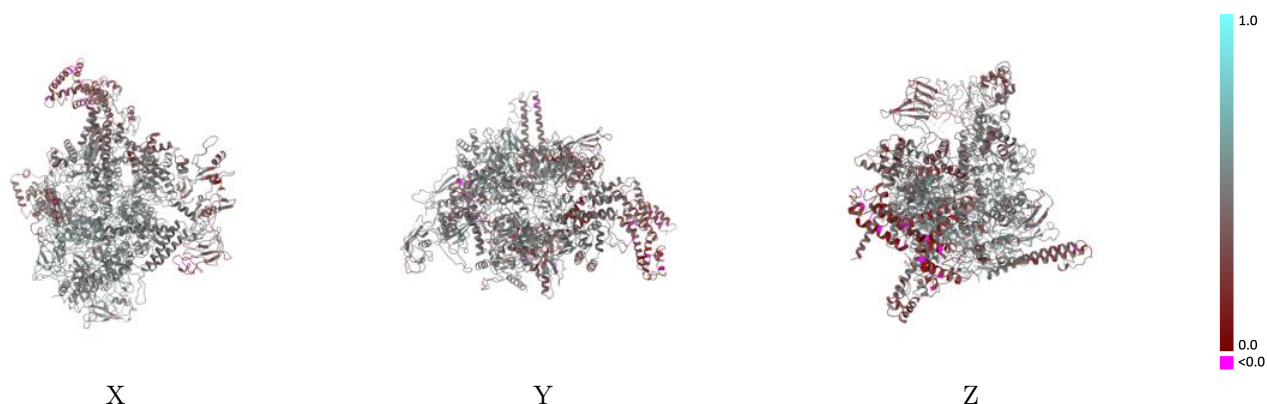
This section contains information regarding the fit between EMDB map EMD-0349 and PDB model 6N58. Per-residue inclusion information can be found in [section 3](#) on [page 6](#).

### 9.1 Map-model overlay [i](#)



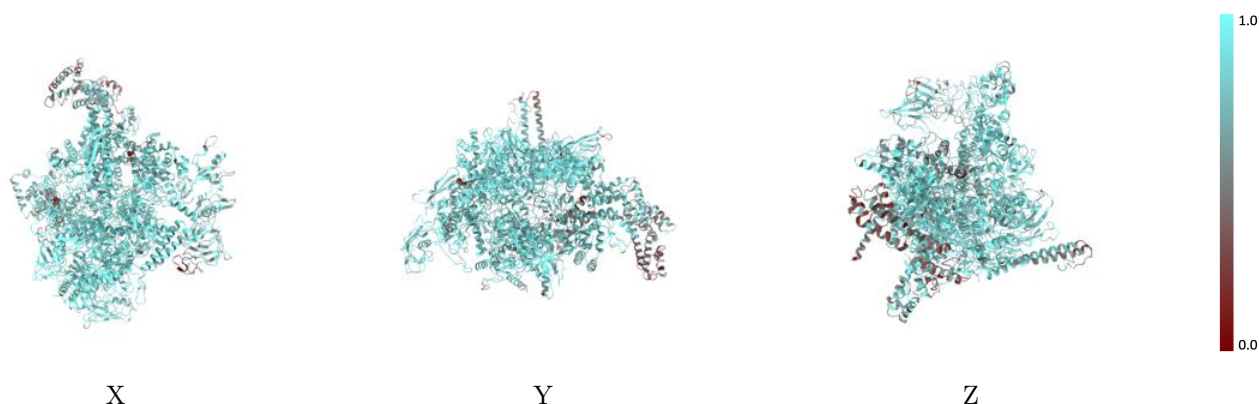
The images above show the 3D surface view of the map at the recommended contour level 0.02 at 50% transparency in yellow overlaid with a ribbon representation of the model coloured in blue. These images allow for the visual assessment of the quality of fit between the atomic model and the map.

## 9.2 Q-score mapped to coordinate model [i](#)



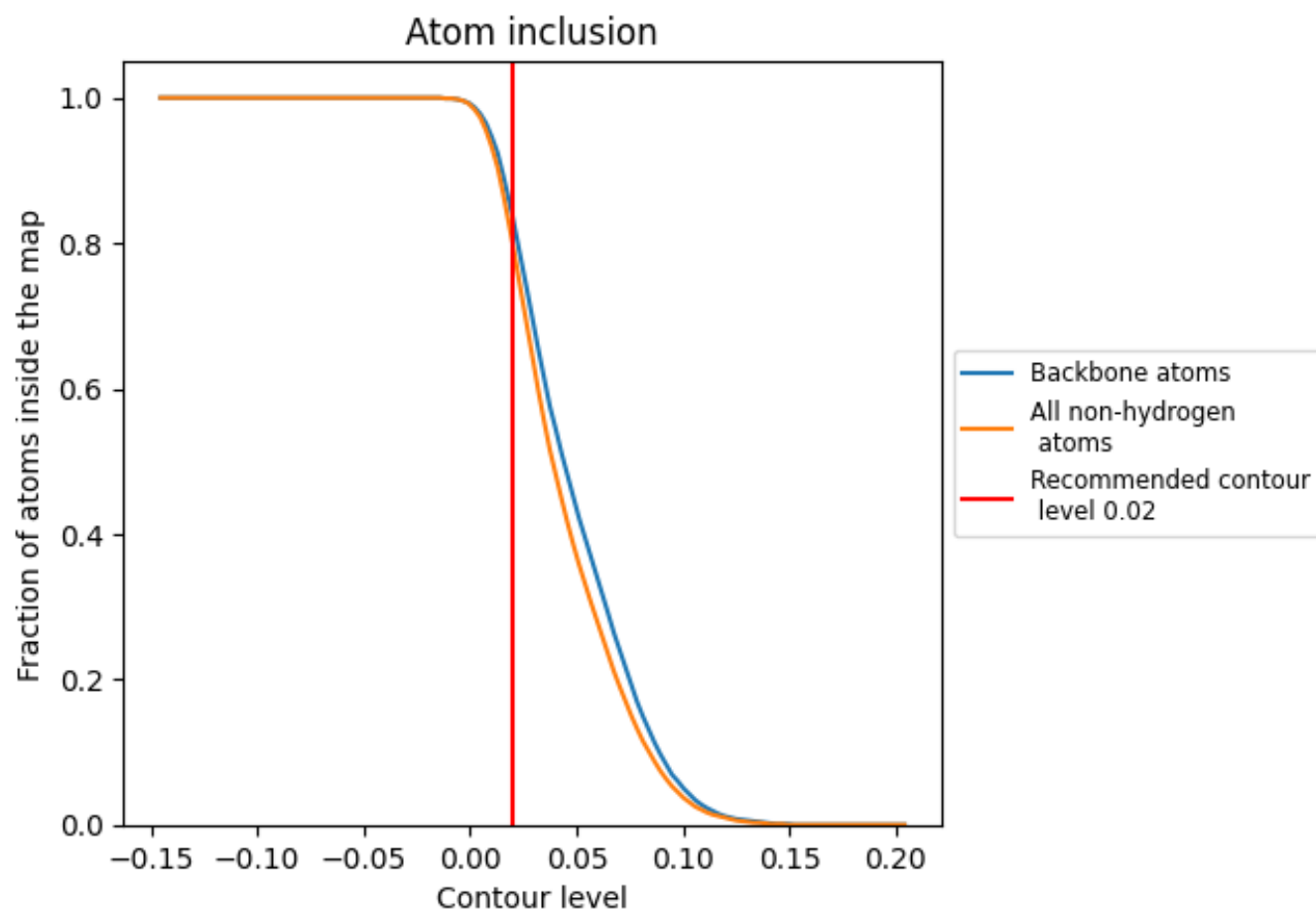
The images above show the model with each residue coloured according to its Q-score. This shows their resolvability in the map with higher Q-score values reflecting better resolvability. Please note: Q-score is calculating the resolvability of atoms, and thus high values are only expected at resolutions at which atoms can be resolved. Low Q-score values may therefore be expected for many entries.

## 9.3 Atom inclusion mapped to coordinate model [i](#)



The images above show the model with each residue coloured according to its atom inclusion. This shows to what extent they are inside the map at the recommended contour level (0.02).

## 9.4 Atom inclusion [i](#)



At the recommended contour level, 84% of all backbone atoms, 80% of all non-hydrogen atoms, are inside the map.

9.5 Map-model fit summary ⓘ

The table lists the average atom inclusion at the recommended contour level (0.02) and Q-score for the entire model and for each chain.

Chain	Atom inclusion	Q-score
All	<div><div></div></div> 0.7990	<div><div></div></div> 0.4430
G	<div><div></div></div> 0.8590	<div><div></div></div> 0.4890
H	<div><div></div></div> 0.8240	<div><div></div></div> 0.4530
I	<div><div></div></div> 0.8380	<div><div></div></div> 0.4710
J	<div><div></div></div> 0.8200	<div><div></div></div> 0.4540
K	<div><div></div></div> 0.7350	<div><div></div></div> 0.4420
L	<div><div></div></div> 0.6420	<div><div></div></div> 0.3230
M	<div><div></div></div> 0.8610	<div><div></div></div> 0.4650

1.0

0.0

<0.0