



Full wwPDB EM Validation Report ⓘ

Jul 3, 2024 – 03:36 am BST

PDB ID : 7APD
EMDB ID : EMD-11852
Title : Bovine Papillomavirus E1 DNA helicase-replication fork complex
Authors : Javed, A.; Major, B.; Stead, J.; Sanders, C.M.; Orlova, E.V.
Deposited on : 2020-10-16
Resolution : 3.90 Å(reported)
Based on initial models : 1KSY, 2GXA

This is a Full wwPDB EM Validation Report for a publicly released PDB entry.

We welcome your comments at validation@mail.wwpdb.org

A user guide is available at

<https://www.wwpdb.org/validation/2017/EMValidationReportHelp>
with specific help available everywhere you see the ⓘ symbol.

The types of validation reports are described at

<http://www.wwpdb.org/validation/2017/FAQs#types>.

The following versions of software and data (see [references ⓘ](#)) were used in the production of this report:

EMDB validation analysis : 0.0.1.dev92
MolProbity : 4.02b-467
Percentile statistics : 20191225.v01 (using entries in the PDB archive December 25th 2019)
MapQ : 1.9.13
Ideal geometry (proteins) : Engh & Huber (2001)
Ideal geometry (DNA, RNA) : Parkinson et al. (1996)
Validation Pipeline (wwPDB-VP) : 2.37.1

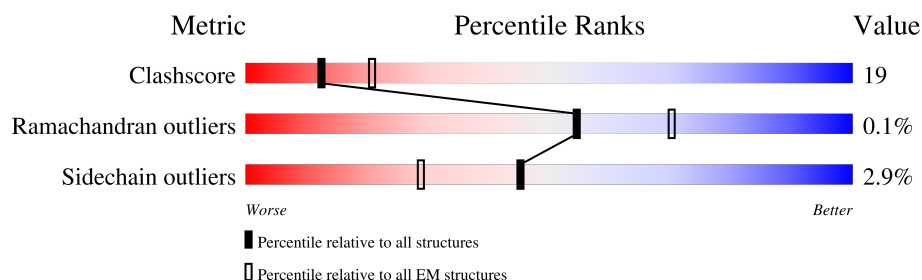
1 Overall quality at a glance

The following experimental techniques were used to determine the structure:

ELECTRON MICROSCOPY

The reported resolution of this entry is 3.90 Å.

Percentile scores (ranging between 0-100) for global validation metrics of the entry are shown in the following graphic. The table shows the number of entries on which the scores are based.



Metric	Whole archive (#Entries)	EM structures (#Entries)
Clashscore	158937	4297
Ramachandran outliers	154571	4023
Sidechain outliers	154315	3826

The table below summarises the geometric issues observed across the polymeric chains and their fit to the map. The red, orange, yellow and green segments of the bar indicate the fraction of residues that contain outliers for ≥ 3 , 2, 1 and 0 types of geometric quality criteria respectively. A grey segment represents the fraction of residues that are not modelled. The numeric value for each fraction is indicated below the corresponding segment, with a dot representing fractions $\leq 5\%$. The upper red bar (where present) indicates the fraction of residues that have poor fit to the EM map (all-atom inclusion $< 40\%$). The numeric value is given above the bar.

Mol	Chain	Length	Quality of chain
1	G	152	
1	H	152	
2	A	298	
2	B	298	
2	C	298	
2	D	298	
2	E	298	
2	F	298	

Continued on next page...

Continued from previous page...

Mol	Chain	Length	Quality of chain
3	P	40	<div><div></div><div>12%</div><div>28%</div><div>65%</div><div>8%</div></div>
4	T	36	<div><div></div><div>31%</div><div>33%</div><div>39%</div><div>28%</div></div>

2 Entry composition

There are 4 unique types of molecules in this entry. The entry contains 17296 atoms, of which 0 are hydrogens and 0 are deuteriums.

In the tables below, the AltConf column contains the number of residues with at least one atom in alternate conformation and the Trace column contains the number of residues modelled with at most 2 atoms.

- Molecule 1 is a protein called Replication protein E1.

Mol	Chain	Residues	Atoms					AltConf	Trace
1	G	152	Total	C	N	O	S	0	0
			1201	776	209	207	9		
1	H	148	Total	C	N	O	S	0	0
			1184	765	206	204	9		

There are 14 discrepancies between the modelled and reference sequences:

Chain	Residue	Modelled	Actual	Comment	Reference
G	156	GLY	-	expression tag	UNP C5IAS0
G	157	SER	-	expression tag	UNP C5IAS0
G	158	ARG	-	expression tag	UNP C5IAS0
G	304	ALA	-	expression tag	UNP C5IAS0
G	305	ALA	-	expression tag	UNP C5IAS0
G	306	ALA	-	expression tag	UNP C5IAS0
G	307	ALA	-	expression tag	UNP C5IAS0
H	156	GLY	-	expression tag	UNP C5IAS0
H	157	SER	-	expression tag	UNP C5IAS0
H	158	ARG	-	expression tag	UNP C5IAS0
H	304	ALA	-	expression tag	UNP C5IAS0
H	305	ALA	-	expression tag	UNP C5IAS0
H	306	ALA	-	expression tag	UNP C5IAS0
H	307	ALA	-	expression tag	UNP C5IAS0

- Molecule 2 is a protein called Replication protein E1.

Mol	Chain	Residues	Atoms					AltConf	Trace
2	B	289	Total	C	N	O	S	0	0
			2238	1439	391	398	10		
2	C	287	Total	C	N	O	S	0	0
			2228	1433	389	396	10		
2	D	287	Total	C	N	O	S	0	0
			2228	1433	389	396	10		

Continued on next page...

Continued from previous page...

Mol	Chain	Residues	Atoms					AltConf	Trace
2	E	287	Total	C	N	O	S	0	0
			2232	1435	389	398	10		
2	F	286	Total	C	N	O	S	0	0
			2229	1433	388	398	10		
2	A	284	Total	C	N	O	S	0	0
			2213	1424	386	393	10		

- Molecule 3 is a DNA chain called DNA (40-MER).

Mol	Chain	Residues	Atoms					AltConf	Trace
3	P	40	Total	C	N	O	P	0	0
			805	390	120	255	40		

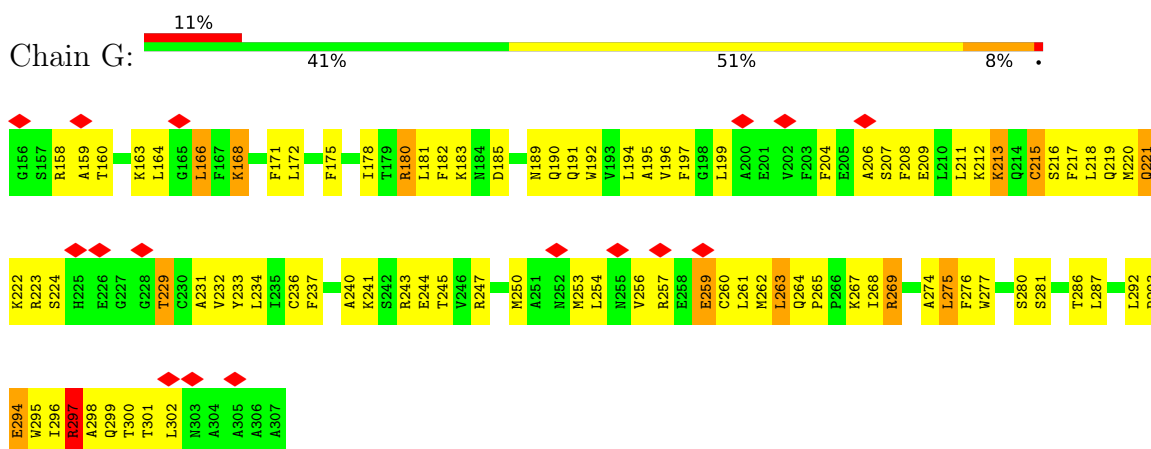
- Molecule 4 is a DNA chain called DNA (36-MER).

Mol	Chain	Residues	Atoms					AltConf	Trace
4	T	36	Total	C	N	O	P	0	0
			738	348	138	216	36		

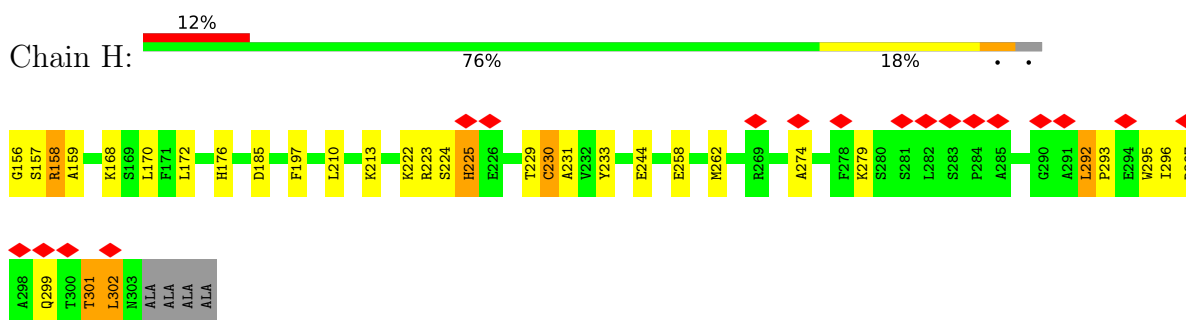
3 Residue-property plots

These plots are drawn for all protein, RNA, DNA and oligosaccharide chains in the entry. The first graphic for a chain summarises the proportions of the various outlier classes displayed in the second graphic. The second graphic shows the sequence view annotated by issues in geometry and atom inclusion in map density. Residues are color-coded according to the number of geometric quality criteria for which they contain at least one outlier: green = 0, yellow = 1, orange = 2 and red = 3 or more. A red diamond above a residue indicates a poor fit to the EM map for this residue (all-atom inclusion < 40%). Stretches of 2 or more consecutive residues without any outlier are shown as a green connector. Residues present in the sample, but not in the model, are shown in grey.

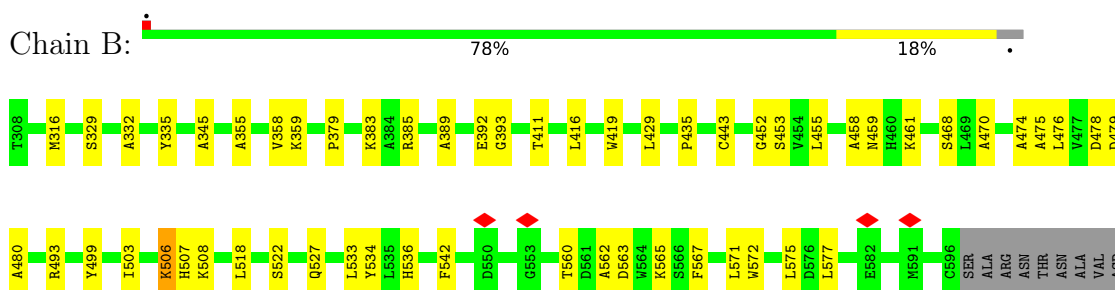
- Molecule 1: Replication protein E1



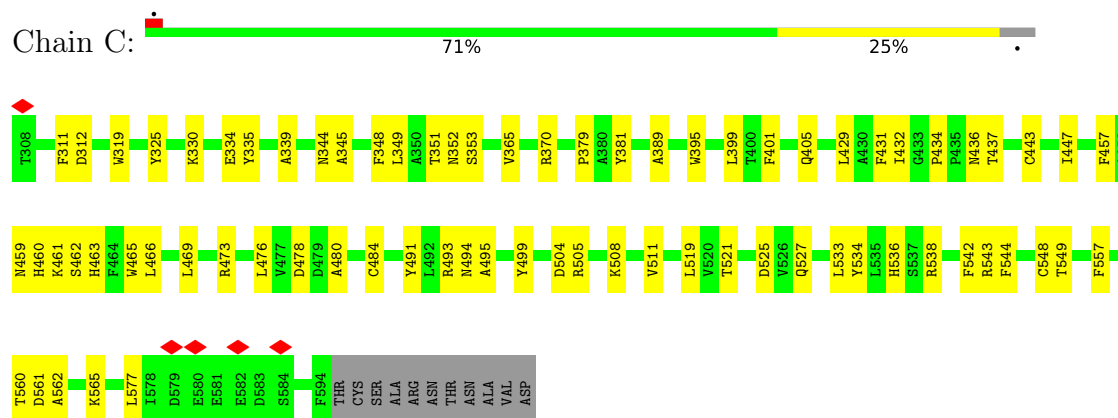
- Molecule 1: Replication protein E1



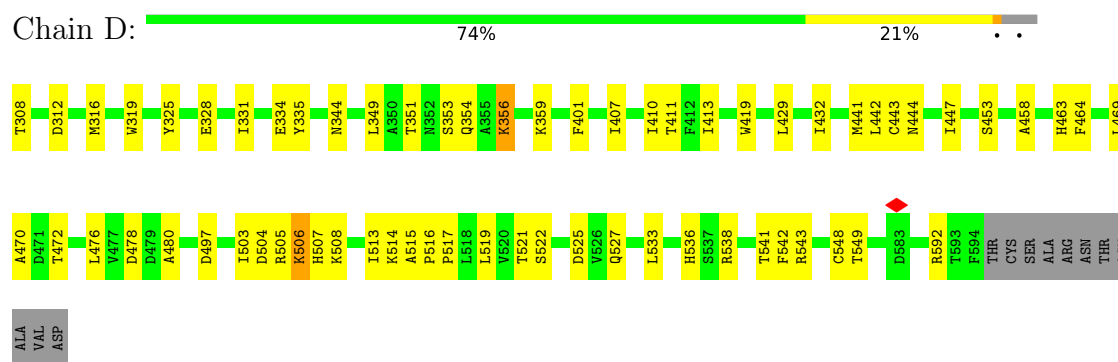
- Molecule 2: Replication protein E1



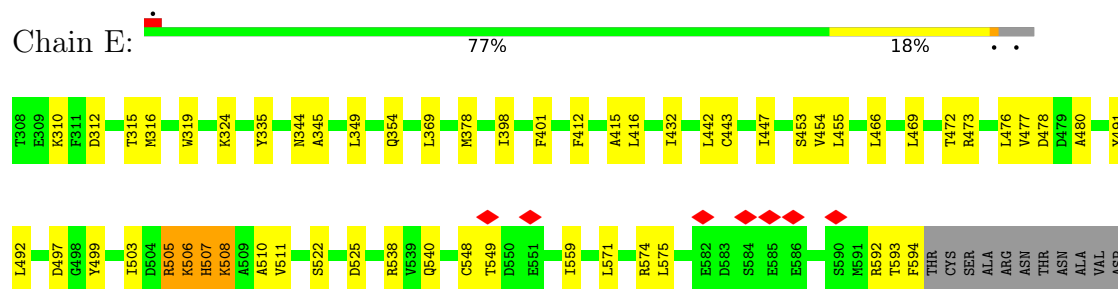
- Molecule 2: Replication protein E1



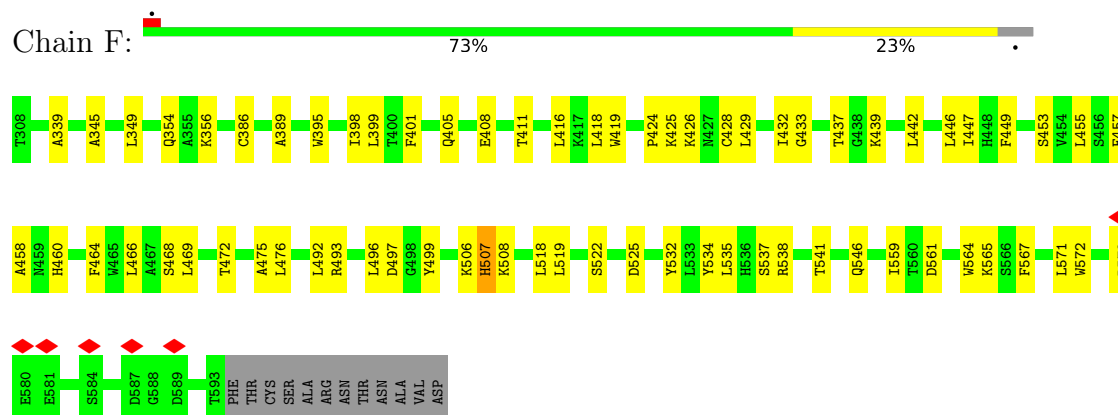
• Molecule 2: Replication protein E1



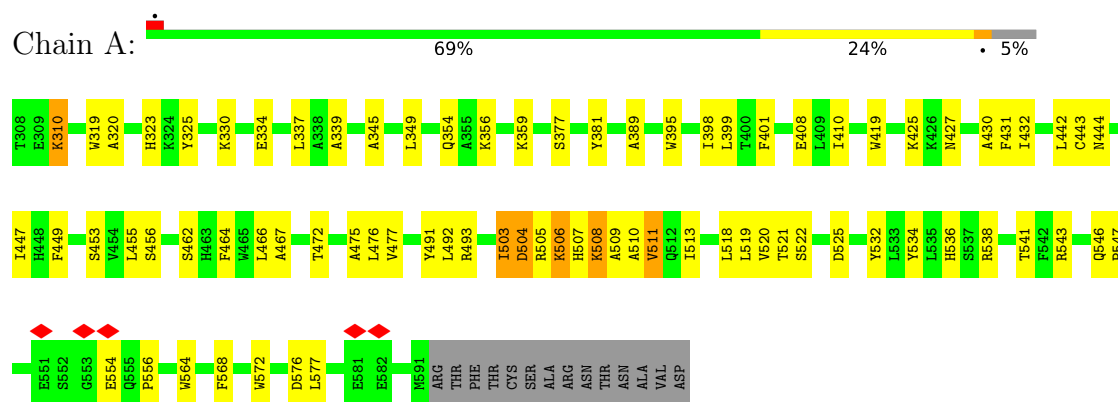
• Molecule 2: Replication protein E1



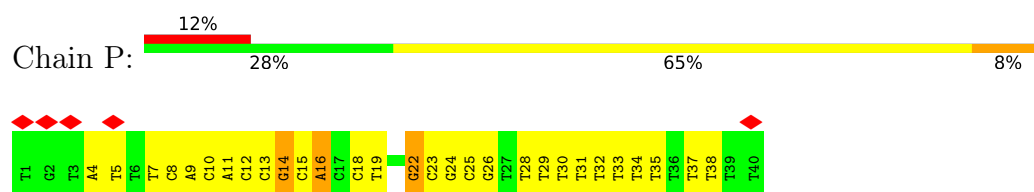
• Molecule 2: Replication protein E1



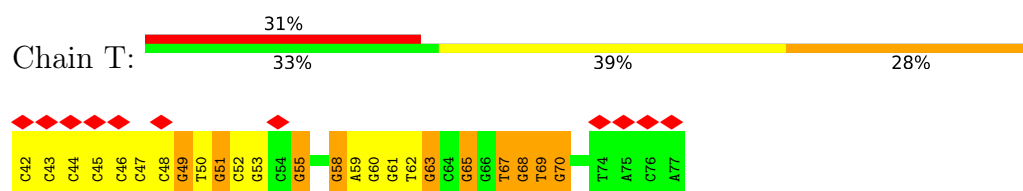
- Molecule 2: Replication protein E1



- Molecule 3: DNA (40-MER)



- Molecule 4: DNA (36-MER)



4 Experimental information

Property	Value	Source
EM reconstruction method	SINGLE PARTICLE	Depositor
Imposed symmetry	POINT, C1	Depositor
Number of particles used	81831	Depositor
Resolution determination method	FSC 0.143 CUT-OFF	Depositor
CTF correction method	PHASE FLIPPING AND AMPLITUDE CORRECTION	Depositor
Microscope	FEI TITAN KRIOS	Depositor
Voltage (kV)	300	Depositor
Electron dose ($e^-/\text{\AA}^2$)	50.4	Depositor
Minimum defocus (nm)	1200	Depositor
Maximum defocus (nm)	2500	Depositor
Magnification	47170	Depositor
Image detector	GATAN K3 BIOQUANTUM (6k x 4k)	Depositor
Maximum map value	65.553	Depositor
Minimum map value	-27.115	Depositor
Average map value	0.048	Depositor
Map value standard deviation	0.782	Depositor
Recommended contour level	3.0	Depositor
Map size (\AA)	325.5, 325.5, 325.5	wwPDB
Map dimensions	300, 300, 300	wwPDB
Map angles ($^\circ$)	90.0, 90.0, 90.0	wwPDB
Pixel spacing (\AA)	1.085, 1.085, 1.085	Depositor

5 Model quality

5.1 Standard geometry

The Z score for a bond length (or angle) is the number of standard deviations the observed value is removed from the expected value. A bond length (or angle) with $|Z| > 5$ is considered an outlier worth inspection. RMSZ is the root-mean-square of all Z scores of the bond lengths (or angles).

Mol	Chain	Bond lengths		Bond angles	
		RMSZ	# $ Z > 5$	RMSZ	# $ Z > 5$
1	G	0.35	0/1227	0.74	2/1653 (0.1%)
1	H	0.58	0/1210	0.70	0/1629
2	A	0.32	0/2272	0.48	0/3085
2	B	0.29	0/2297	0.47	0/3120
2	C	0.29	0/2287	0.45	0/3106
2	D	0.28	0/2287	0.46	0/3106
2	E	0.28	0/2291	0.47	1/3111 (0.0%)
2	F	0.28	0/2288	0.44	0/3107
3	P	0.83	3/894 (0.3%)	1.06	0/1376
4	T	0.90	8/827 (1.0%)	0.97	2/1274 (0.2%)
All	All	0.41	11/17880 (0.1%)	0.58	5/24567 (0.0%)

Chiral center outliers are detected by calculating the chiral volume of a chiral center and verifying if the center is modelled as a planar moiety or with the opposite hand. A planarity outlier is detected by checking planarity of atoms in a peptide group, atoms in a mainchain group or atoms of a sidechain that are expected to be planar.

Mol	Chain	#Chirality outliers	#Planarity outliers
1	G	0	2

All (11) bond length outliers are listed below:

Mol	Chain	Res	Type	Atoms	Z	Observed(Å)	Ideal(Å)
4	T	68	DG	C1'-N9	-6.76	1.37	1.47
4	T	63	DG	C1'-N9	-6.47	1.38	1.47
4	T	49	DG	C1'-N9	-6.07	1.38	1.47
4	T	70	DG	C1'-N9	-5.89	1.39	1.47
4	T	58	DG	C1'-N9	-5.85	1.39	1.47
3	P	22	DG	C1'-N9	-5.63	1.39	1.47
4	T	55	DG	C1'-N9	-5.62	1.39	1.47
3	P	14	DG	C1'-N9	-5.49	1.39	1.47
4	T	65	DG	C1'-N9	-5.47	1.39	1.47
4	T	51	DG	C1'-N9	-5.46	1.39	1.47

Continued on next page...

Continued from previous page...

Mol	Chain	Res	Type	Atoms	Z	Observed(Å)	Ideal(Å)
3	P	16	DA	C1'-N9	-5.15	1.40	1.47

All (5) bond angle outliers are listed below:

Mol	Chain	Res	Type	Atoms	Z	Observed(°)	Ideal(°)
1	G	297	ARG	CA-CB-CG	8.28	131.61	113.40
4	T	69	DT	O4'-C1'-N1	6.21	112.35	108.00
1	G	259	GLU	CA-CB-CG	5.17	124.78	113.40
4	T	67	DT	O4'-C1'-N1	5.15	111.60	108.00
2	E	492	LEU	CA-CB-CG	5.15	127.14	115.30

There are no chirality outliers.

All (2) planarity outliers are listed below:

Mol	Chain	Res	Type	Group
1	G	180	ARG	Peptide
1	G	213	LYS	Peptide

5.2 Too-close contacts [i](#)

In the following table, the Non-H and H(model) columns list the number of non-hydrogen atoms and hydrogen atoms in the chain respectively. The H(added) column lists the number of hydrogen atoms added and optimized by MolProbity. The Clashes column lists the number of clashes within the asymmetric unit, whereas Symm-Clashes lists symmetry-related clashes.

Mol	Chain	Non-H	H(model)	H(added)	Clashes	Symm-Clashes
1	G	1201	0	1225	95	0
1	H	1184	0	1210	55	0
2	A	2213	0	2118	99	0
2	B	2238	0	2128	44	0
2	C	2228	0	2124	56	0
2	D	2228	0	2124	62	0
2	E	2232	0	2128	59	0
2	F	2229	0	2131	65	0
3	P	805	0	461	125	0
4	T	738	0	402	110	0
All	All	17296	0	16051	628	0

The all-atom clashscore is defined as the number of clashes found per 1000 atoms (including hydrogen atoms). The all-atom clashscore for this structure is 19.

All (628) close contacts within the same asymmetric unit are listed below, sorted by their clash magnitude.

Atom-1	Atom-2	Interatomic distance (Å)	Clash overlap (Å)
1:G:168:LYS:NZ	1:G:172:LEU:CD2	1.80	1.42
1:G:168:LYS:HZ3	1:G:172:LEU:CD2	1.28	1.41
1:H:172:LEU:O	4:T:46:DC:C5'	1.68	1.41
2:A:507:HIS:NE2	3:P:33:DT:H5''	1.39	1.35
1:H:172:LEU:O	4:T:46:DC:C4'	1.78	1.30
3:P:14:DG:C2	4:T:65:DG:N2	1.99	1.30
2:E:592:ARG:HA	4:T:49:DG:N1	1.46	1.30
1:H:172:LEU:CB	4:T:46:DC:H5''	1.64	1.24
3:P:11:DA:N1	4:T:68:DG:C6	2.08	1.21
1:G:168:LYS:NZ	1:G:172:LEU:HD23	0.88	1.20
1:H:172:LEU:O	4:T:46:DC:H4'	1.29	1.20
3:P:11:DA:C2	4:T:68:DG:C5	2.30	1.20
2:A:507:HIS:NE2	3:P:33:DT:C5'	2.06	1.18
2:A:507:HIS:O	2:A:508:LYS:HD3	1.43	1.17
1:H:279:LYS:NZ	4:T:47:DC:H5'	1.58	1.16
2:A:507:HIS:CD2	3:P:33:DT:H5''	1.81	1.15
1:H:279:LYS:HZ2	4:T:47:DC:H5'	1.03	1.14
3:P:11:DA:C2	4:T:68:DG:C6	2.36	1.13
2:D:464:PHE:CE1	2:D:506:LYS:HG3	1.84	1.12
2:F:507:HIS:CD2	3:P:31:DT:H4'	1.84	1.12
1:H:172:LEU:O	4:T:46:DC:H5'	1.36	1.10
1:H:172:LEU:C	4:T:46:DC:H5'	1.72	1.09
1:H:176:HIS:CE1	4:T:43:DC:O2	2.04	1.09
1:H:295:TRP:O	1:H:299:GLN:HG3	1.50	1.09
2:F:356:LYS:NZ	3:P:26:DG:C6	2.20	1.08
3:P:14:DG:N3	4:T:65:DG:N2	2.02	1.05
1:G:168:LYS:CE	1:G:172:LEU:HD23	1.85	1.05
2:E:592:ARG:HA	4:T:49:DG:C2	1.92	1.04
2:F:356:LYS:NZ	3:P:26:DG:O6	1.92	1.02
3:P:11:DA:C2	4:T:68:DG:C4	2.46	1.02
3:P:24:DG:N1	4:T:55:DG:C6	2.28	1.01
3:P:24:DG:O6	4:T:55:DG:O6	1.78	1.01
1:H:158:ARG:CZ	1:H:159:ALA:HB3	1.89	1.00
1:H:172:LEU:HB3	4:T:46:DC:H5''	1.01	1.00
1:H:172:LEU:HB3	4:T:46:DC:C5'	1.89	0.99
1:G:168:LYS:HZ3	1:G:172:LEU:CG	1.74	0.99
1:H:172:LEU:C	4:T:46:DC:C5'	2.27	0.98
1:H:172:LEU:CA	4:T:46:DC:H5''	1.94	0.97
3:P:14:DG:C2	4:T:65:DG:C2	2.53	0.97
2:A:464:PHE:CD1	2:A:506:LYS:HE2	2.00	0.97

Continued on next page...

Continued from previous page...

Atom-1	Atom-2	Interatomic distance (Å)	Clash overlap (Å)
3:P:11:DA:N3	4:T:68:DG:C2	2.33	0.97
2:D:506:LYS:NZ	3:P:31:DT:P	2.38	0.96
3:P:15:DC:C4	3:P:16:DA:C6	2.52	0.96
2:D:464:PHE:CD1	2:D:506:LYS:HG3	2.00	0.95
2:D:505:ARG:HH12	2:D:508:LYS:HD2	1.30	0.94
2:E:505:ARG:HB2	2:E:505:ARG:NH1	1.83	0.93
2:B:533:LEU:HA	2:B:536:HIS:HD2	1.34	0.93
2:E:592:ARG:HA	4:T:49:DG:H1	1.30	0.93
2:E:507:HIS:NE2	3:P:29:DT:O2	2.01	0.92
3:P:16:DA:H2	4:T:63:DG:H22	1.13	0.91
3:P:24:DG:N1	4:T:55:DG:N1	2.18	0.91
2:A:507:HIS:CD2	3:P:33:DT:C5'	2.53	0.89
2:B:355:ALA:O	2:B:359:LYS:HG2	1.72	0.89
2:A:507:HIS:O	2:A:508:LYS:CD	2.20	0.88
2:E:310:LYS:HE2	4:T:52:DC:C6	2.08	0.88
4:T:48:DC:H2''	4:T:49:DG:OP2	1.74	0.87
4:T:61:DG:H2''	4:T:62:DT:H72	1.56	0.87
2:A:464:PHE:HE1	2:A:505:ARG:O	1.57	0.87
3:P:24:DG:C6	4:T:55:DG:O6	2.27	0.87
2:A:464:PHE:CD1	2:A:506:LYS:CE	2.58	0.87
3:P:10:DC:O2	4:T:68:DG:N2	2.07	0.86
1:G:168:LYS:NZ	1:G:172:LEU:HA	1.91	0.86
2:E:592:ARG:CA	4:T:49:DG:N1	2.35	0.86
3:P:24:DG:C6	4:T:55:DG:C6	2.64	0.86
1:H:176:HIS:HE1	4:T:43:DC:O2	1.58	0.86
3:P:14:DG:H2''	3:P:15:DC:C5	2.11	0.86
3:P:11:DA:C6	4:T:68:DG:C6	2.63	0.85
2:E:507:HIS:O	2:E:508:LYS:HD2	1.76	0.85
1:G:168:LYS:HZ1	1:G:172:LEU:HD23	1.02	0.84
2:A:464:PHE:HB3	2:A:506:LYS:HD2	1.57	0.84
2:D:464:PHE:HE1	2:D:506:LYS:HG3	1.39	0.84
1:G:168:LYS:CE	1:G:172:LEU:HA	2.08	0.84
2:A:464:PHE:CE1	2:A:505:ARG:O	2.30	0.84
2:F:464:PHE:CE2	2:F:506:LYS:HA	2.13	0.84
2:A:506:LYS:NZ	2:A:506:LYS:HB3	1.94	0.83
2:E:592:ARG:CA	4:T:49:DG:H1	1.93	0.82
2:F:464:PHE:CD2	2:F:506:LYS:HG2	2.15	0.81
1:H:295:TRP:O	1:H:299:GLN:CG	2.28	0.81
2:C:405:GLN:NE2	2:C:548:CYS:SG	2.53	0.81
1:H:292:LEU:HD11	1:H:296:ILE:HB	1.61	0.81
1:H:274:ALA:HB2	1:H:299:GLN:NE2	1.95	0.81

Continued on next page...

Continued from previous page...

Atom-1	Atom-2	Interatomic distance (Å)	Clash overlap (Å)
3:P:7:DT:H2''	3:P:8:DC:C5	2.14	0.81
2:F:464:PHE:HE2	2:F:506:LYS:HA	1.46	0.81
1:H:176:HIS:CE1	4:T:43:DC:C2	2.67	0.80
2:F:469:LEU:HD21	2:F:475:ALA:HB2	1.62	0.80
2:D:506:LYS:HZ1	3:P:31:DT:P	2.03	0.80
3:P:11:DA:C2	4:T:68:DG:C2	2.70	0.80
3:P:26:DG:H2'	3:P:26:DG:N3	1.97	0.80
1:H:168:LYS:HE2	4:T:45:DC:OP2	1.81	0.79
2:F:506:LYS:NZ	3:P:33:DT:OP1	2.15	0.79
1:G:243:ARG:O	1:G:247:ARG:HB2	1.82	0.79
1:G:267:LYS:NZ	1:G:269:ARG:O	2.16	0.78
3:P:8:DC:C4	3:P:9:DA:C6	2.70	0.78
4:T:61:DG:C2'	4:T:62:DT:H72	2.13	0.78
1:G:269:ARG:HE	1:G:269:ARG:HA	1.49	0.78
3:P:8:DC:C4	3:P:9:DA:N6	2.52	0.78
3:P:11:DA:C2	4:T:68:DG:N1	2.50	0.78
1:H:172:LEU:CA	4:T:46:DC:C5'	2.62	0.77
4:T:61:DG:H2''	4:T:62:DT:C7	2.15	0.77
2:D:464:PHE:HE1	2:D:506:LYS:CG	1.97	0.77
1:G:182:PHE:H	1:G:264:GLN:HE22	1.33	0.76
1:G:168:LYS:HZ1	1:G:172:LEU:CD2	1.71	0.76
2:A:572:TRP:HZ3	2:A:577:LEU:HD12	1.50	0.76
2:F:457:PHE:O	2:F:460:HIS:ND1	2.18	0.75
1:H:292:LEU:CD1	1:H:296:ILE:HB	2.17	0.75
1:H:222:LYS:HG3	1:H:231:ALA:HB2	1.68	0.75
3:P:11:DA:H2	4:T:68:DG:C4	1.99	0.75
3:P:15:DC:C4	3:P:16:DA:N1	2.55	0.75
2:E:505:ARG:HB2	2:E:505:ARG:HH11	1.50	0.74
3:P:15:DC:N4	3:P:16:DA:C6	2.55	0.74
2:F:507:HIS:CD2	3:P:31:DT:C4'	2.69	0.74
1:H:172:LEU:CB	4:T:46:DC:C5'	2.55	0.74
3:P:24:DG:C2	4:T:55:DG:N1	2.55	0.74
2:D:464:PHE:CE1	2:D:506:LYS:CG	2.67	0.73
3:P:11:DA:N1	4:T:68:DG:C5	2.47	0.73
3:P:16:DA:H2	4:T:63:DG:N2	1.85	0.73
2:E:548:CYS:SG	2:E:549:THR:N	2.62	0.73
2:F:507:HIS:N	3:P:32:DT:OP1	2.22	0.73
3:P:24:DG:C2	4:T:55:DG:C2	2.76	0.73
1:G:294:GLU:O	1:G:298:ALA:HB2	1.88	0.73
1:H:168:LYS:HE3	4:T:45:DC:O5'	1.88	0.72
2:F:496:LEU:HB2	2:F:538:ARG:HD3	1.72	0.72

Continued on next page...

Continued from previous page...

Atom-1	Atom-2	Interatomic distance (Å)	Clash overlap (Å)
2:D:478:ASP:OD1	2:D:521:THR:OG1	2.08	0.72
3:P:11:DA:H2	4:T:68:DG:C5	2.04	0.71
1:G:294:GLU:O	1:G:298:ALA:CB	2.38	0.71
2:D:505:ARG:HH12	2:D:508:LYS:CD	2.01	0.71
1:H:279:LYS:HZ3	4:T:47:DC:H5'	1.56	0.71
4:T:61:DG:C8	4:T:62:DT:H72	2.26	0.71
2:C:478:ASP:OD1	2:C:521:THR:OG1	2.08	0.70
2:D:506:LYS:NZ	3:P:31:DT:OP1	2.23	0.70
2:A:464:PHE:CG	2:A:506:LYS:CE	2.73	0.70
2:A:507:HIS:C	2:A:508:LYS:HD3	2.11	0.70
1:G:223:ARG:HB3	1:G:224:SER:HA	1.74	0.70
4:T:44:DC:H1'	4:T:45:DC:OP2	1.92	0.70
1:G:168:LYS:CD	1:G:172:LEU:HA	2.21	0.70
2:A:464:PHE:CG	2:A:506:LYS:HE3	2.27	0.70
2:A:507:HIS:NE2	3:P:33:DT:H5'	2.06	0.70
1:G:197:PHE:HD2	1:G:260:CYS:HB2	1.57	0.69
2:E:507:HIS:C	2:E:508:LYS:HD2	2.12	0.69
3:P:7:DT:H72	3:P:8:DC:N4	2.08	0.69
2:B:335:TYR:HE1	2:B:345:ALA:HA	1.58	0.69
2:B:459:ASN:ND2	2:C:504:ASP:OD2	2.25	0.69
2:E:432:ILE:HD13	2:E:525:ASP:HA	1.72	0.69
2:B:478:ASP:OD1	2:B:479:ASP:N	2.25	0.69
2:F:507:HIS:HD2	3:P:31:DT:H4'	1.55	0.68
3:P:15:DC:N4	3:P:16:DA:N6	2.41	0.68
3:P:11:DA:C4	4:T:68:DG:C2	2.82	0.68
2:B:506:LYS:NZ	2:C:508:LYS:O	2.27	0.67
3:P:7:DT:H72	3:P:8:DC:H42	1.60	0.67
3:P:15:DC:N4	3:P:16:DA:N1	2.43	0.67
1:H:170:LEU:HD13	1:H:223:ARG:O	1.94	0.67
3:P:11:DA:C6	4:T:68:DG:O6	2.46	0.67
3:P:15:DC:C5	3:P:16:DA:C6	2.83	0.67
2:B:443:CYS:HB3	2:B:476:LEU:HD11	1.76	0.67
2:B:572:TRP:CH2	2:B:577:LEU:HD22	2.29	0.67
1:G:293:PRO:HB2	1:G:295:TRP:CD1	2.30	0.67
1:G:182:PHE:HZ	4:T:67:DT:H2''	1.60	0.66
3:P:22:DG:C6	3:P:23:DC:N4	2.63	0.66
2:E:497:ASP:OD1	2:E:538:ARG:NH1	2.29	0.66
3:P:24:DG:C6	4:T:55:DG:N1	2.63	0.66
2:F:401:PHE:HE1	2:F:405:GLN:HE21	1.43	0.66
2:A:506:LYS:HE3	3:P:34:DT:OP1	1.96	0.66
2:B:453:SER:OG	2:B:468:SER:OG	2.10	0.65

Continued on next page...

Continued from previous page...

Atom-1	Atom-2	Interatomic distance (Å)	Clash overlap (Å)
3:P:14:DG:N2	4:T:65:DG:C2	2.64	0.65
3:P:22:DG:C6	3:P:23:DC:C4	2.85	0.65
2:E:593:THR:N	4:T:49:DG:H1	1.93	0.65
2:F:447:ILE:HG13	2:F:476:LEU:HB2	1.77	0.65
2:A:506:LYS:HB3	2:A:506:LYS:HZ3	1.60	0.65
2:B:533:LEU:HA	2:B:536:HIS:CD2	2.25	0.65
2:A:356:LYS:NZ	3:P:26:DG:H22	1.94	0.64
2:F:419:TRP:HE1	2:F:518:LEU:H	1.43	0.64
2:F:493:ARG:HG2	2:F:534:TYR:CE2	2.31	0.64
1:G:211:LEU:HD11	1:G:250:MET:HE3	1.79	0.64
2:A:504:ASP:OD1	2:A:504:ASP:N	2.30	0.64
2:E:335:TYR:HE1	2:E:345:ALA:HA	1.61	0.64
2:D:349:LEU:O	2:D:354:GLN:NE2	2.30	0.64
3:P:7:DT:H2''	3:P:8:DC:C6	2.32	0.64
1:G:160:THR:OG1	1:G:163:LYS:NZ	2.26	0.63
2:F:408:GLU:O	2:F:411:THR:OG1	2.15	0.63
1:H:158:ARG:NE	1:H:159:ALA:HB3	2.14	0.63
3:P:7:DT:C7	3:P:8:DC:N4	2.61	0.63
2:A:464:PHE:CD1	2:A:505:ARG:C	2.72	0.63
2:B:527:GLN:NE2	2:B:536:HIS:O	2.32	0.63
2:A:464:PHE:CE1	2:A:506:LYS:HE2	2.33	0.63
2:A:506:LYS:NZ	3:P:33:DT:O3'	2.30	0.63
2:D:349:LEU:HB3	4:T:50:DT:H72	1.79	0.62
2:C:432:ILE:HD13	2:C:525:ASP:HA	1.81	0.62
2:E:378:MET:HE1	2:E:473:ARG:HG2	1.81	0.62
2:A:507:HIS:O	2:A:508:LYS:CE	2.48	0.62
2:E:349:LEU:O	2:E:354:GLN:NE2	2.33	0.62
3:P:22:DG:C5	3:P:23:DC:C5	2.88	0.62
1:H:292:LEU:HD11	1:H:296:ILE:CB	2.29	0.62
2:F:458:ALA:HB2	2:A:491:TYR:CE1	2.34	0.62
3:P:11:DA:N1	4:T:68:DG:O6	2.32	0.62
4:T:45:DC:H5''	4:T:46:DC:OP2	1.99	0.62
3:P:14:DG:N2	4:T:65:DG:N2	2.44	0.61
1:H:158:ARG:HD3	1:H:159:ALA:N	2.15	0.61
2:A:349:LEU:O	2:A:354:GLN:NE2	2.34	0.61
1:G:168:LYS:HD2	1:G:168:LYS:O	2.00	0.61
1:G:168:LYS:HD2	1:G:172:LEU:HA	1.82	0.61
1:H:279:LYS:NZ	4:T:47:DC:C5'	2.51	0.61
2:A:467:ALA:HB2	2:A:505:ARG:HB3	1.82	0.61
3:P:8:DC:C5	3:P:9:DA:N6	2.69	0.61
3:P:22:DG:C5	3:P:23:DC:C4	2.88	0.61

Continued on next page...

Continued from previous page...

Atom-1	Atom-2	Interatomic distance (Å)	Clash overlap (Å)
3:P:28:DT:H5"	3:P:28:DT:O2	2.01	0.61
2:A:432:ILE:HD13	2:A:525:ASP:HA	1.83	0.60
1:H:176:HIS:CE1	4:T:43:DC:N3	2.68	0.60
2:A:453:SER:HB3	2:A:472:THR:HG21	1.83	0.60
1:G:196:VAL:HG21	1:G:254:LEU:HD13	1.83	0.60
1:H:292:LEU:HD13	1:H:293:PRO:HD2	1.83	0.60
2:A:507:HIS:O	2:A:508:LYS:HE2	2.01	0.60
2:F:464:PHE:CD2	2:F:506:LYS:CG	2.84	0.60
2:A:464:PHE:HB3	2:A:506:LYS:CD	2.28	0.60
2:F:453:SER:HB3	2:F:472:THR:HG21	1.84	0.59
2:A:408:GLU:HB3	2:A:410:ILE:HG22	1.84	0.59
2:A:319:TRP:CH2	2:A:334:GLU:OE2	2.55	0.59
3:P:11:DA:C4	4:T:68:DG:N1	2.70	0.59
3:P:25:DC:N3	4:T:53:DG:C6	2.70	0.59
2:C:459:ASN:HB3	2:C:465:TRP:HB3	1.85	0.59
1:G:182:PHE:H	1:G:264:GLN:NE2	2.01	0.58
2:E:511:VAL:HG13	2:E:511:VAL:O	2.02	0.58
2:B:332:ALA:HB2	2:B:358:VAL:HG21	1.85	0.58
2:C:312:ASP:H	2:C:344:ASN:HD21	1.51	0.58
1:G:269:ARG:HA	1:G:269:ARG:NE	2.19	0.58
2:B:393:GLY:H	2:B:562:ALA:HB1	1.67	0.58
1:G:217:PHE:CE2	1:G:219:GLN:HB2	2.38	0.58
3:P:19:DT:C4	4:T:58:DG:O6	2.56	0.58
2:A:447:ILE:HG13	2:A:476:LEU:HD12	1.85	0.58
2:C:494:ASN:OD1	2:C:495:ALA:N	2.37	0.57
2:D:308:THR:N	4:T:51:DG:OP1	2.37	0.57
2:D:506:LYS:HZ3	3:P:31:DT:P	2.27	0.57
2:D:548:CYS:SG	2:D:549:THR:N	2.77	0.57
2:F:395:TRP:CZ3	2:F:399:LEU:HD12	2.39	0.57
2:C:319:TRP:HH2	2:C:334:GLU:OE2	1.87	0.57
2:C:533:LEU:HA	2:C:536:HIS:HE2	1.69	0.57
2:A:464:PHE:CD1	2:A:506:LYS:HD2	2.39	0.57
2:F:398:ILE:HG13	2:F:559:ILE:HD12	1.87	0.57
2:C:401:PHE:HE1	2:C:405:GLN:HE21	1.52	0.57
2:E:398:ILE:HG12	2:E:559:ILE:HD12	1.87	0.57
2:C:459:ASN:OD1	2:C:462:SER:OG	2.22	0.57
2:E:505:ARG:HB2	2:E:505:ARG:CZ	2.35	0.57
2:F:339:ALA:HA	2:F:345:ALA:HB3	1.87	0.56
3:P:9:DA:H2"	3:P:10:DC:C5	2.40	0.56
2:B:567:PHE:CE2	2:B:571:LEU:HD12	2.41	0.56
2:F:349:LEU:O	2:F:354:GLN:NE2	2.39	0.56

Continued on next page...

Continued from previous page...

Atom-1	Atom-2	Interatomic distance (Å)	Clash overlap (Å)
2:C:335:TYR:OH	2:C:344:ASN:OD1	2.21	0.56
2:A:389:ALA:HB2	2:A:449:PHE:HE2	1.68	0.56
2:A:464:PHE:CE1	2:A:505:ARG:C	2.79	0.56
1:G:268:ILE:O	1:G:299:GLN:NE2	2.26	0.55
2:A:464:PHE:CD1	2:A:506:LYS:CD	2.89	0.55
1:H:168:LYS:CE	4:T:45:DC:OP2	2.52	0.55
4:T:45:DC:H2'	4:T:45:DC:O2	2.05	0.55
1:G:244:GLU:HG2	1:G:247:ARG:HH12	1.71	0.55
1:G:274:ALA:HB1	1:G:296:ILE:HG23	1.89	0.55
2:B:493:ARG:HH22	2:A:456:SER:HB2	1.70	0.55
3:P:9:DA:C8	3:P:10:DC:N4	2.75	0.55
1:G:256:VAL:HG22	1:G:257:ARG:H	1.72	0.55
2:D:505:ARG:NH1	2:D:508:LYS:HD2	2.12	0.55
1:G:221:GLN:HG2	1:G:280:SER:HB3	1.88	0.55
4:T:62:DT:N3	4:T:63:DG:C6	2.75	0.55
1:G:234:LEU:HD11	1:G:295:TRP:HZ2	1.72	0.55
2:E:310:LYS:HE2	4:T:52:DC:C5	2.42	0.55
3:P:11:DA:C2	4:T:68:DG:N3	2.75	0.55
4:T:62:DT:C2	4:T:63:DG:C6	2.95	0.55
1:G:208:PHE:HD1	1:G:218:LEU:HD23	1.71	0.55
2:C:429:LEU:HD11	2:C:542:PHE:CE1	2.41	0.55
2:C:505:ARG:HH12	2:C:511:VAL:HG13	1.72	0.55
1:G:206:ALA:O	1:G:209:GLU:HB3	2.08	0.54
1:G:194:LEU:HB3	1:G:233:TYR:HB2	1.88	0.54
2:D:444:ASN:HD22	2:E:499:TYR:HD2	1.55	0.54
2:D:401:PHE:CE1	2:D:442:LEU:HD12	2.42	0.54
2:E:401:PHE:HE2	2:E:442:LEU:HD12	1.72	0.54
1:H:168:LYS:NZ	4:T:46:DC:OP2	2.41	0.54
2:E:466:LEU:HD22	2:E:469:LEU:HD22	1.89	0.54
1:H:292:LEU:HD13	1:H:293:PRO:CD	2.38	0.54
1:H:170:LEU:HD21	1:H:225:HIS:CD2	2.43	0.54
2:C:549:THR:HA	2:C:557:PHE:CE1	2.43	0.54
2:E:316:MET:HG3	2:E:335:TYR:CE2	2.43	0.54
2:F:429:LEU:HB2	2:F:519:LEU:HD23	1.90	0.54
2:F:432:ILE:HD13	2:F:525:ASP:HA	1.89	0.54
2:A:467:ALA:HB2	2:A:505:ARG:HG2	1.88	0.54
2:E:469:LEU:HD23	2:E:503:ILE:HD13	1.90	0.54
4:T:59:DA:H2''	4:T:60:DG:H5'	1.89	0.54
2:D:503:ILE:HG13	2:D:513:ILE:HD11	1.90	0.53
2:B:389:ALA:HB3	2:B:565:LYS:HD3	1.90	0.53
1:G:217:PHE:HE2	1:G:219:GLN:HB2	1.74	0.53

Continued on next page...

Continued from previous page...

Atom-1	Atom-2	Interatomic distance (Å)	Clash overlap (Å)
1:H:159:ALA:CB	1:H:262:MET:SD	2.97	0.53
2:F:534:TYR:O	2:F:538:ARG:NH1	2.42	0.53
2:C:561:ASP:OD1	2:C:562:ALA:N	2.42	0.53
2:D:325:TYR:CE2	2:D:334:GLU:HG2	2.43	0.53
2:E:571:LEU:HG	2:E:574:ARG:HD2	1.89	0.53
1:G:168:LYS:HZ3	1:G:172:LEU:CA	2.22	0.53
2:C:457:PHE:O	2:C:460:HIS:ND1	2.34	0.53
2:F:437:THR:OG1	2:F:546:GLN:O	2.22	0.53
2:A:506:LYS:CE	3:P:34:DT:OP1	2.56	0.53
1:G:168:LYS:HZ3	1:G:172:LEU:CB	2.23	0.52
1:G:194:LEU:O	1:G:233:TYR:N	2.29	0.52
1:G:292:LEU:O	1:G:297:ARG:HG3	2.08	0.52
3:P:8:DC:N4	3:P:9:DA:N6	2.56	0.52
1:G:168:LYS:HZ3	1:G:172:LEU:HA	1.60	0.52
1:G:268:ILE:C	1:G:299:GLN:HE21	2.09	0.52
2:F:507:HIS:NE2	3:P:31:DT:C4'	2.73	0.52
2:A:464:PHE:CB	2:A:506:LYS:HD2	2.36	0.52
3:P:15:DC:N3	3:P:16:DA:C2	2.78	0.52
4:T:48:DC:C2'	4:T:49:DG:OP2	2.55	0.52
2:C:533:LEU:HA	2:C:536:HIS:NE2	2.25	0.52
1:H:159:ALA:HB2	1:H:262:MET:SD	2.50	0.52
2:D:312:ASP:H	2:D:344:ASN:HD21	1.58	0.52
2:F:428:CYS:HB2	2:F:496:LEU:HD22	1.89	0.52
1:H:172:LEU:HB3	4:T:46:DC:H3'	1.91	0.52
2:E:447:ILE:HG13	2:E:476:LEU:HB2	1.91	0.51
2:E:592:ARG:C	4:T:49:DG:H1	2.13	0.51
1:G:189:ASN:HD22	1:G:265:PRO:HB3	1.76	0.51
1:G:219:GLN:HB3	1:G:234:LEU:HB3	1.91	0.51
1:G:168:LYS:HZ3	1:G:172:LEU:HD23	0.71	0.51
2:D:328:GLU:O	2:D:331:ILE:HG22	2.10	0.51
3:P:15:DC:H41	3:P:16:DA:N6	2.08	0.51
1:G:293:PRO:O	1:G:297:ARG:HB3	2.10	0.51
2:D:497:ASP:OD1	2:D:538:ARG:HD3	2.10	0.51
1:H:156:GLY:N	1:H:258:GLU:OE1	2.44	0.51
3:P:12:DC:O2	4:T:68:DG:H5''	2.11	0.51
1:G:182:PHE:CZ	4:T:67:DT:H2''	2.45	0.51
2:C:431:PHE:HD1	2:C:443:CYS:SG	2.33	0.51
2:D:351:THR:HG22	2:D:353:SER:H	1.76	0.51
2:B:493:ARG:HD3	2:B:534:TYR:CD1	2.45	0.50
2:A:425:LYS:HA	2:A:538:ARG:HG3	1.92	0.50
2:C:443:CYS:HB3	2:C:476:LEU:HD11	1.93	0.50

Continued on next page...

Continued from previous page...

Atom-1	Atom-2	Interatomic distance (Å)	Clash overlap (Å)
1:H:170:LEU:HD21	1:H:225:HIS:CG	2.46	0.50
2:A:467:ALA:HB2	2:A:505:ARG:CB	2.41	0.50
2:D:464:PHE:HD1	2:D:506:LYS:HG3	1.70	0.50
1:G:191:GLN:HA	1:G:236:CYS:HA	1.92	0.50
3:P:18:DC:C6	3:P:19:DT:H73	2.47	0.50
3:P:37:DT:H2''	3:P:38:DT:H2'	1.92	0.50
2:A:506:LYS:HZ3	2:A:506:LYS:CB	2.22	0.50
1:H:158:ARG:HD3	1:H:159:ALA:H	1.76	0.50
2:C:434:PRO:HD2	2:C:544:PHE:O	2.11	0.50
2:E:443:CYS:HB3	2:E:476:LEU:HD11	1.93	0.50
1:G:199:LEU:HB3	1:G:222:LYS:NZ	2.27	0.49
1:G:219:GLN:O	1:G:234:LEU:N	2.42	0.49
2:C:436:ASN:HD21	2:D:538:ARG:HH22	1.59	0.49
3:P:14:DG:N1	4:T:65:DG:C2	2.79	0.49
2:D:525:ASP:OD2	2:D:527:GLN:N	2.44	0.49
2:F:433:GLY:O	2:F:439:LYS:NZ	2.45	0.49
2:A:425:LYS:HD3	2:A:538:ARG:HE	1.76	0.49
2:F:507:HIS:NE2	3:P:31:DT:H4'	2.26	0.49
2:C:466:LEU:HD22	2:C:469:LEU:HD11	1.94	0.49
1:H:279:LYS:HZ2	4:T:47:DC:C5'	1.97	0.49
2:F:449:PHE:CD1	2:F:564:TRP:HB3	2.47	0.49
1:H:292:LEU:HD13	1:H:293:PRO:N	2.27	0.49
2:F:401:PHE:HE2	2:F:442:LEU:HB2	1.78	0.49
2:F:419:TRP:HE1	2:F:518:LEU:N	2.10	0.49
3:P:14:DG:N1	4:T:65:DG:N1	2.60	0.49
1:G:171:PHE:HB3	1:G:276:PHE:HE1	1.77	0.49
1:G:197:PHE:CD2	1:G:260:CYS:HB2	2.45	0.49
2:C:436:ASN:HD21	2:D:538:ARG:HH12	1.59	0.49
2:E:592:ARG:HA	4:T:49:DG:N2	2.24	0.49
1:G:281:SER:HA	1:G:286:THR:HG21	1.93	0.48
2:B:392:GLU:O	2:B:392:GLU:HG3	2.13	0.48
2:B:493:ARG:HD3	2:B:534:TYR:CE1	2.48	0.48
2:C:525:ASP:OD1	2:C:527:GLN:N	2.46	0.48
3:P:15:DC:C5	3:P:16:DA:C5	3.01	0.48
2:F:464:PHE:HD2	2:F:506:LYS:CG	2.26	0.48
1:G:166:LEU:HD23	1:G:197:PHE:HE1	1.78	0.48
2:D:443:CYS:HB3	2:D:476:LEU:HD11	1.94	0.48
2:D:458:ALA:HA	2:E:491:TYR:HE2	1.79	0.48
1:H:292:LEU:HD11	1:H:296:ILE:CG2	2.43	0.48
2:C:429:LEU:HB3	2:C:519:LEU:HD23	1.96	0.48
2:F:447:ILE:HD11	2:F:519:LEU:HD12	1.94	0.48

Continued on next page...

Continued from previous page...

Atom-1	Atom-2	Interatomic distance (Å)	Clash overlap (Å)
2:A:319:TRP:HE1	2:A:323:HIS:CE1	2.31	0.48
2:B:453:SER:HG	2:B:468:SER:HG	1.49	0.48
2:A:419:TRP:NE1	2:A:518:LEU:O	2.47	0.48
4:T:61:DG:C8	4:T:62:DT:C7	2.95	0.48
1:G:297:ARG:HA	1:G:301:THR:OG1	2.13	0.48
2:C:311:PHE:CE1	2:C:348:PHE:HB2	2.49	0.48
2:A:449:PHE:HE1	2:A:568:PHE:CD1	2.31	0.48
4:T:69:DT:H4'	4:T:70:DG:H5''	1.95	0.48
2:D:447:ILE:HG13	2:D:476:LEU:HB2	1.95	0.48
2:E:401:PHE:CE2	2:E:442:LEU:HD12	2.48	0.48
2:E:592:ARG:CA	4:T:49:DG:C2	2.83	0.48
2:A:493:ARG:HG3	2:A:534:TYR:HE2	1.78	0.48
2:A:576:ASP:O	2:A:577:LEU:HD23	2.13	0.48
2:A:330:LYS:O	2:A:334:GLU:HG3	2.12	0.48
2:A:425:LYS:HE2	2:A:538:ARG:HH21	1.79	0.48
2:A:466:LEU:HD11	2:A:492:LEU:HD11	1.96	0.48
2:B:435:PRO:HG2	2:C:534:TYR:CZ	2.49	0.47
2:B:480:ALA:HB3	2:B:522:SER:HB3	1.97	0.47
2:C:434:PRO:HG2	2:C:437:THR:HG21	1.96	0.47
2:D:441:MET:SD	2:D:442:LEU:N	2.88	0.47
2:E:335:TYR:OH	2:E:344:ASN:ND2	2.42	0.47
2:E:415:ALA:HB1	2:E:540:GLN:NE2	2.29	0.47
2:E:594:PHE:O	4:T:50:DT:O4	2.32	0.47
3:P:12:DC:OP2	3:P:13:DC:H5	1.97	0.47
2:C:312:ASP:H	2:C:344:ASN:ND2	2.12	0.47
2:D:525:ASP:OD1	2:D:543:ARG:NH1	2.44	0.47
2:E:480:ALA:HB3	2:E:522:SER:HB3	1.97	0.47
2:A:525:ASP:OD1	2:A:543:ARG:NH1	2.47	0.47
2:C:339:ALA:HA	2:C:345:ALA:HB3	1.96	0.47
2:E:506:LYS:O	3:P:31:DT:OP1	2.32	0.47
2:A:449:PHE:CD1	2:A:564:TRP:HB3	2.50	0.47
2:C:476:LEU:HD21	2:C:478:ASP:HB2	1.96	0.47
1:H:224:SER:HB2	1:H:229:THR:HG22	1.96	0.47
4:T:42:DC:O3'	4:T:43:DC:C6	2.68	0.47
2:D:453:SER:HB3	2:D:472:THR:HG21	1.96	0.47
2:D:506:LYS:HG2	3:P:30:DT:H5''	1.95	0.47
3:P:22:DG:O6	3:P:23:DC:N4	2.47	0.47
2:C:351:THR:HG22	2:C:353:SER:H	1.79	0.47
2:F:537:SER:OG	2:F:538:ARG:NH1	2.48	0.47
3:P:11:DA:N3	4:T:68:DG:N3	2.60	0.47
1:G:168:LYS:HD2	1:G:168:LYS:C	2.30	0.47

Continued on next page...

Continued from previous page...

Atom-1	Atom-2	Interatomic distance (Å)	Clash overlap (Å)
2:B:499:TYR:HE1	2:A:444:ASN:HD21	1.62	0.47
1:G:222:LYS:NZ	1:G:231:ALA:HB2	2.29	0.47
2:B:493:ARG:HH12	2:A:456:SER:CB	2.28	0.47
2:A:339:ALA:HA	2:A:345:ALA:HB3	1.96	0.47
2:A:467:ALA:HB2	2:A:505:ARG:CG	2.45	0.47
3:P:24:DG:C5	3:P:25:DC:C5	3.02	0.47
1:G:211:LEU:HD13	1:G:218:LEU:HD11	1.97	0.46
2:C:459:ASN:HD21	2:D:504:ASP:CG	2.17	0.46
2:F:464:PHE:CD2	2:F:506:LYS:HA	2.50	0.46
2:B:383:LYS:HD3	2:B:572:TRP:CH2	2.50	0.46
2:B:470:ALA:HB2	2:B:503:ILE:HG21	1.97	0.46
2:E:324:LYS:HD2	2:E:369:LEU:HD21	1.97	0.46
2:B:329:SER:HB3	2:C:370:ARG:NH2	2.31	0.46
2:A:330:LYS:HD2	2:A:330:LYS:HA	1.69	0.46
2:A:464:PHE:HD1	2:A:505:ARG:C	2.14	0.46
2:E:469:LEU:HD23	2:E:503:ILE:CD1	2.45	0.46
1:G:181:LEU:HA	1:G:264:GLN:NE2	2.31	0.46
2:E:447:ILE:HG13	2:E:476:LEU:HD12	1.98	0.46
2:F:497:ASP:OD2	2:F:534:TYR:OH	2.32	0.46
1:G:190:GLN:HA	1:G:240:ALA:HA	1.97	0.46
2:B:560:THR:HG23	2:B:563:ASP:H	1.80	0.46
3:P:8:DC:N4	3:P:9:DA:H61	2.14	0.46
1:G:208:PHE:CD1	1:G:218:LEU:HD23	2.51	0.46
2:C:389:ALA:HB3	2:C:565:LYS:HD3	1.96	0.46
3:P:24:DG:N2	4:T:55:DG:C2	2.84	0.46
4:T:42:DC:O3'	4:T:43:DC:H6	1.98	0.46
3:P:7:DT:C2'	3:P:8:DC:C5	2.93	0.46
1:G:175:PHE:HA	1:G:178:ILE:HG12	1.98	0.46
2:C:494:ASN:HB2	2:C:499:TYR:HB2	1.97	0.46
2:F:497:ASP:HB3	2:F:499:TYR:CE2	2.51	0.46
3:P:12:DC:H2'	3:P:13:DC:C6	2.51	0.46
2:A:467:ALA:CB	2:A:505:ARG:HB3	2.47	0.45
1:H:197:PHE:CD1	1:H:230:CYS:HB2	2.51	0.45
1:G:185:ASP:OD1	1:G:243:ARG:HD2	2.16	0.45
2:D:410:ILE:O	2:D:413:ILE:HG22	2.16	0.45
2:E:319:TRP:CZ3	2:E:335:TYR:HD2	2.34	0.45
2:F:507:HIS:NE2	3:P:31:DT:O4'	2.50	0.45
2:B:411:THR:HG22	2:B:542:PHE:HE2	1.82	0.45
2:B:506:LYS:O	2:B:506:LYS:HD3	2.16	0.45
2:D:463:HIS:NE2	2:D:504:ASP:OD2	2.43	0.45
2:D:469:LEU:HD22	2:D:516:PRO:HG2	1.99	0.45

Continued on next page...

Continued from previous page...

Atom-1	Atom-2	Interatomic distance (Å)	Clash overlap (Å)
1:G:263:LEU:O	1:G:264:GLN:HG2	2.16	0.45
2:F:466:LEU:HD11	2:F:492:LEU:HD11	1.98	0.45
2:A:532:TYR:O	2:A:536:HIS:ND1	2.46	0.45
2:B:429:LEU:HD23	2:B:542:PHE:CE1	2.52	0.45
2:C:525:ASP:OD2	2:C:543:ARG:NH2	2.45	0.45
2:F:386:CYS:SG	2:F:565:LYS:HG3	2.57	0.45
2:A:310:LYS:HD2	2:A:310:LYS:HA	1.40	0.45
1:G:269:ARG:HH21	1:G:299:GLN:HG2	1.82	0.45
2:B:416:LEU:HD12	2:B:419:TRP:HE3	1.81	0.45
2:F:469:LEU:HD23	2:F:469:LEU:HA	1.71	0.45
1:G:190:GLN:HG3	1:G:191:GLN:HG3	1.98	0.45
2:D:316:MET:HG3	2:D:335:TYR:CE1	2.52	0.45
2:E:455:LEU:HB2	2:E:477:VAL:HG22	1.98	0.45
2:E:571:LEU:HB3	2:E:575:LEU:HD12	1.99	0.45
3:P:29:DT:H2''	3:P:30:DT:C6	2.52	0.45
1:G:208:PHE:CD2	1:G:287:LEU:HB3	2.52	0.44
2:C:395:TRP:CZ3	2:C:399:LEU:HD22	2.53	0.44
2:F:418:LEU:HD13	2:F:426:LYS:HD2	1.97	0.44
2:A:493:ARG:HG3	2:A:534:TYR:CE2	2.51	0.44
1:H:176:HIS:NE2	4:T:43:DC:N3	2.65	0.44
3:P:26:DG:N3	3:P:26:DG:C2'	2.73	0.44
2:D:444:ASN:ND2	2:E:499:TYR:HD2	2.15	0.44
2:C:493:ARG:HH12	2:C:538:ARG:HH12	1.65	0.44
2:F:455:LEU:HD23	2:F:455:LEU:HA	1.84	0.44
2:B:458:ALA:HB2	2:C:491:TYR:HB3	1.99	0.44
2:D:349:LEU:CB	4:T:50:DT:H72	2.47	0.44
2:A:475:ALA:HB3	2:A:518:LEU:HD23	1.99	0.44
3:P:22:DG:C4	3:P:23:DC:C5	3.05	0.44
2:E:312:ASP:O	2:E:315:THR:OG1	2.34	0.44
2:A:430:ALA:HA	2:A:520:VAL:HG13	1.97	0.44
2:D:514:LYS:HG3	2:D:515:ALA:H	1.82	0.44
2:E:454:VAL:HG12	2:E:476:LEU:HB3	1.99	0.44
2:A:507:HIS:CE1	3:P:33:DT:H5''	2.35	0.44
3:P:8:DC:H6	3:P:8:DC:O5'	2.00	0.44
2:D:533:LEU:HA	2:D:536:HIS:CE1	2.52	0.44
2:A:431:PHE:CE1	2:A:519:LEU:HD11	2.53	0.44
1:G:215:CYS:HB3	1:G:237:PHE:HA	2.00	0.44
2:B:316:MET:HG3	2:B:335:TYR:CE2	2.53	0.44
2:E:453:SER:HB3	2:E:472:THR:HG21	1.99	0.44
2:F:432:ILE:HA	2:F:522:SER:O	2.18	0.44
4:T:43:DC:H6	4:T:43:DC:P	2.41	0.44

Continued on next page...

Continued from previous page...

Atom-1	Atom-2	Interatomic distance (Å)	Clash overlap (Å)
1:G:256:VAL:HG11	1:G:260:CYS:SG	2.58	0.43
2:D:458:ALA:HA	2:E:491:TYR:CE2	2.52	0.43
2:F:532:TYR:HB3	2:F:535:LEU:HB2	1.99	0.43
1:H:210:LEU:O	1:H:213:LYS:HG2	2.18	0.43
1:G:158:ARG:NH1	1:G:159:ALA:HB3	2.33	0.43
2:B:452:GLY:HA3	2:B:474:ALA:O	2.18	0.43
2:D:480:ALA:HB3	2:D:522:SER:HB3	2.00	0.43
2:F:389:ALA:HB1	2:F:561:ASP:HB3	2.00	0.43
2:F:416:LEU:HD12	2:F:419:TRP:HE3	1.83	0.43
3:P:15:DC:C4	3:P:16:DA:N6	2.84	0.43
3:P:31:DT:C2	3:P:32:DT:C4	3.07	0.43
2:C:459:ASN:HB3	2:C:465:TRP:CB	2.47	0.43
2:F:567:PHE:CE2	2:F:571:LEU:HD22	2.53	0.43
2:A:319:TRP:HH2	2:A:334:GLU:OE2	2.00	0.43
2:A:476:LEU:HD23	2:A:477:VAL:N	2.33	0.43
1:H:185:ASP:O	1:H:244:GLU:HG3	2.18	0.43
4:T:62:DT:N3	4:T:63:DG:O6	2.51	0.43
2:D:470:ALA:HA	2:D:513:ILE:HD13	2.00	0.43
2:D:506:LYS:O	2:D:508:LYS:HG3	2.18	0.43
1:H:297:ARG:O	1:H:301:THR:OG1	2.36	0.43
1:G:223:ARG:HB3	1:G:224:SER:CA	2.44	0.43
1:G:294:GLU:O	1:G:298:ALA:HB3	2.18	0.43
2:F:506:LYS:NZ	3:P:33:DT:P	2.92	0.43
1:G:158:ARG:NH1	1:G:264:GLN:HE21	2.16	0.43
2:B:461:LYS:HB2	2:C:463:HIS:CE1	2.53	0.43
2:B:379:PRO:HB3	2:B:577:LEU:HD21	2.00	0.43
2:F:432:ILE:HD12	2:F:541:THR:OG1	2.18	0.43
2:F:507:HIS:CA	3:P:32:DT:OP1	2.66	0.43
1:G:194:LEU:CD1	1:G:262:MET:H	2.30	0.43
1:G:243:ARG:O	1:G:247:ARG:CB	2.62	0.43
2:B:475:ALA:HB3	2:B:518:LEU:HD23	2.01	0.43
2:A:427:ASN:O	2:A:427:ASN:ND2	2.52	0.43
2:A:467:ALA:CB	2:A:505:ARG:HG2	2.49	0.43
2:A:503:ILE:HB	2:A:511:VAL:HG23	2.01	0.43
2:A:507:HIS:CD2	3:P:33:DT:H5'	2.47	0.43
1:G:189:ASN:O	1:G:192:TRP:NE1	2.51	0.42
1:G:195:ALA:HA	1:G:232:VAL:HA	2.01	0.42
2:D:514:LYS:HG3	2:D:515:ALA:N	2.33	0.42
2:D:325:TYR:HE2	2:D:334:GLU:HG2	1.84	0.42
2:F:507:HIS:HA	3:P:32:DT:OP1	2.20	0.42
2:A:377:SER:O	2:A:381:TYR:N	2.41	0.42

Continued on next page...

Continued from previous page...

Atom-1	Atom-2	Interatomic distance (Å)	Clash overlap (Å)
4:T:67:DT:H2''	4:T:68:DG:OP2	2.19	0.42
1:G:158:ARG:HD3	1:G:264:GLN:NE2	2.35	0.42
1:G:275:LEU:HD23	1:G:275:LEU:HA	1.93	0.42
2:D:356:LYS:HE3	2:D:356:LYS:HB2	1.65	0.42
2:E:505:ARG:CZ	2:E:505:ARG:CB	2.97	0.42
3:P:12:DC:OP2	3:P:13:DC:C5	2.72	0.42
1:G:217:PHE:CG	1:G:218:LEU:N	2.88	0.42
1:G:296:ILE:C	1:G:298:ALA:H	2.22	0.42
2:D:331:ILE:HD12	2:D:331:ILE:HA	1.91	0.42
1:G:178:ILE:HD12	1:G:277:TRP:HZ2	1.85	0.42
2:C:560:THR:HG22	2:C:561:ASP:H	1.84	0.42
2:A:462:SER:HB3	2:A:464:PHE:HD2	1.83	0.42
2:C:480:ALA:HB1	2:C:484:CYS:HB3	2.01	0.42
2:F:425:LYS:O	2:F:538:ARG:HA	2.20	0.42
2:A:455:LEU:HD23	2:A:455:LEU:HA	1.86	0.42
3:P:11:DA:N3	4:T:68:DG:N1	2.58	0.42
1:G:197:PHE:HA	1:G:229:THR:O	2.19	0.42
1:G:204:PHE:O	1:G:207:SER:OG	2.22	0.42
1:G:204:PHE:CZ	1:G:220:MET:HB3	2.54	0.42
1:G:292:LEU:HB3	1:G:297:ARG:HB2	2.02	0.42
2:D:411:THR:HG22	2:D:542:PHE:HE1	1.85	0.42
2:A:508:LYS:HB3	2:A:509:ALA:H	1.62	0.42
2:D:429:LEU:HB2	2:D:519:LEU:HD23	2.02	0.42
3:P:4:DA:H1'	3:P:5:DT:H5'	2.02	0.42
1:G:196:VAL:HG23	1:G:231:ALA:HB3	2.01	0.42
1:G:277:TRP:HB2	1:G:296:ILE:HD13	2.01	0.42
2:D:407:ILE:HD11	2:D:543:ARG:O	2.19	0.42
2:F:339:ALA:HA	2:F:345:ALA:CB	2.49	0.42
3:P:24:DG:O6	3:P:25:DC:N4	2.33	0.42
2:C:534:TYR:O	2:C:538:ARG:NH1	2.53	0.41
2:A:395:TRP:HZ3	2:A:399:LEU:HD13	1.84	0.41
2:A:401:PHE:CE2	2:A:442:LEU:HD22	2.55	0.41
2:A:431:PHE:HE1	2:A:519:LEU:HD11	1.85	0.41
2:A:432:ILE:HA	2:A:522:SER:O	2.20	0.41
2:C:349:LEU:HD13	2:D:592:ARG:HA	2.02	0.41
2:E:412:PHE:HE2	2:E:416:LEU:HD22	1.85	0.41
2:A:319:TRP:CE3	2:A:320:ALA:N	2.88	0.41
2:A:395:TRP:O	2:A:398:ILE:HG22	2.20	0.41
2:A:337:LEU:HD12	2:A:337:LEU:HA	1.90	0.41
1:H:301:THR:HB	1:H:302:LEU:H	1.56	0.41
4:T:61:DG:H1'	4:T:62:DT:C6	2.55	0.41

Continued on next page...

Continued from previous page...

Atom-1	Atom-2	Interatomic distance (Å)	Clash overlap (Å)
1:G:217:PHE:CE2	1:G:292:LEU:HD13	2.56	0.41
1:G:220:MET:HG2	1:G:233:TYR:CD1	2.56	0.41
2:B:508:LYS:NZ	2:A:359:LYS:HG3	2.35	0.41
2:C:493:ARG:HH12	2:C:538:ARG:NH1	2.18	0.41
2:E:592:ARG:CA	4:T:49:DG:N2	2.84	0.41
2:E:594:PHE:O	4:T:50:DT:H73	2.21	0.41
2:F:424:PRO:HB3	2:F:497:ASP:O	2.20	0.41
2:F:447:ILE:HG13	2:F:476:LEU:HD12	2.02	0.41
2:A:325:TYR:CE1	2:A:334:GLU:HG2	2.55	0.41
3:P:11:DA:C5	4:T:68:DG:N1	2.89	0.41
2:F:446:LEU:HD23	2:F:519:LEU:HD11	2.02	0.41
2:F:458:ALA:HB2	2:A:491:TYR:HE1	1.82	0.41
3:P:35:DT:H6	3:P:35:DT:H2'	1.70	0.41
1:G:194:LEU:HD11	1:G:261:LEU:HD23	2.03	0.41
1:G:297:ARG:NH2	1:G:302:LEU:HA	2.36	0.41
2:D:432:ILE:HD12	2:D:541:THR:HG23	2.02	0.41
3:P:8:DC:N3	3:P:9:DA:C6	2.87	0.41
2:B:385:ARG:HD3	2:B:385:ARG:HA	1.86	0.41
2:C:443:CYS:HB3	2:C:476:LEU:CD1	2.50	0.41
2:C:447:ILE:HD11	2:C:519:LEU:HD12	2.02	0.41
2:E:506:LYS:HZ3	2:E:506:LYS:HB3	1.85	0.41
3:P:18:DC:H2'	3:P:19:DT:H71	2.03	0.41
2:A:554:GLU:O	2:A:556:PRO:HD3	2.21	0.41
2:C:330:LYS:HA	2:C:330:LYS:HD2	1.79	0.41
2:D:319:TRP:CZ3	2:D:335:TYR:HD1	2.39	0.41
2:E:476:LEU:HD21	2:E:478:ASP:HB3	2.03	0.41
3:P:15:DC:H6	3:P:15:DC:H2'	1.71	0.41
1:G:241:LYS:HB3	1:G:245:THR:OG1	2.21	0.41
2:C:461:LYS:HE2	2:C:461:LYS:HB2	1.71	0.41
2:D:419:TRP:NE1	2:D:517:PRO:HB3	2.36	0.41
2:E:478:ASP:OD1	2:E:478:ASP:N	2.51	0.41
2:A:443:CYS:SG	2:A:521:THR:HG22	2.61	0.41
2:A:506:LYS:H	2:A:506:LYS:HG2	1.65	0.41
3:P:16:DA:H2	4:T:63:DG:H1	1.64	0.41
2:C:325:TYR:O	2:C:365:VAL:HG11	2.20	0.40
2:C:381:TYR:CD2	2:C:473:ARG:HD3	2.56	0.40
2:A:319:TRP:CD2	2:A:319:TRP:C	2.93	0.40
1:H:296:ILE:O	1:H:299:GLN:HB2	2.21	0.40
3:P:16:DA:C2	4:T:63:DG:N1	2.83	0.40
2:A:432:ILE:HD12	2:A:541:THR:HG23	2.04	0.40
3:P:28:DT:O2	3:P:28:DT:H3'	2.21	0.40

Continued on next page...

Continued from previous page...

Atom-1	Atom-2	Interatomic distance (Å)	Clash overlap (Å)
2:B:455:LEU:HD21	2:B:468:SER:HB3	2.02	0.40
2:D:506:LYS:O	2:D:507:HIS:HB2	2.20	0.40
2:A:476:LEU:HA	2:A:519:LEU:O	2.22	0.40
3:P:15:DC:N4	3:P:16:DA:H61	2.17	0.40
2:B:506:LYS:HE3	2:B:506:LYS:HB2	1.82	0.40
2:B:575:LEU:O	2:B:575:LEU:HD23	2.21	0.40
2:F:572:TRP:HE1	2:F:579:ASP:N	2.20	0.40
2:B:493:ARG:HH12	2:A:456:SER:HB2	1.87	0.40
2:C:379:PRO:HG3	2:C:577:LEU:HD22	2.04	0.40
2:D:401:PHE:HE1	2:D:442:LEU:HD12	1.86	0.40
2:E:466:LEU:HB3	2:E:503:ILE:CG2	2.50	0.40
2:F:455:LEU:HD21	2:F:468:SER:HB2	2.02	0.40
2:A:546:GLN:HA	2:A:547:PRO:HD3	1.94	0.40
3:P:11:DA:C6	4:T:68:DG:N1	2.87	0.40

There are no symmetry-related clashes.

5.3 Torsion angles

5.3.1 Protein backbone

In the following table, the Percentiles column shows the percent Ramachandran outliers of the chain as a percentile score with respect to all PDB entries followed by that with respect to all EM entries.

The Analysed column shows the number of residues for which the backbone conformation was analysed, and the total number of residues.

Mol	Chain	Analysed	Favoured	Allowed	Outliers	Percentiles	
1	G	150/152 (99%)	134 (89%)	15 (10%)	1 (1%)	22	60
1	H	146/152 (96%)	141 (97%)	5 (3%)	0	100	100
2	A	282/298 (95%)	258 (92%)	23 (8%)	1 (0%)	34	71
2	B	287/298 (96%)	258 (90%)	29 (10%)	0	100	100
2	C	285/298 (96%)	261 (92%)	24 (8%)	0	100	100
2	D	285/298 (96%)	265 (93%)	20 (7%)	0	100	100
2	E	285/298 (96%)	257 (90%)	27 (10%)	1 (0%)	34	71
2	F	284/298 (95%)	257 (90%)	27 (10%)	0	100	100
All	All	2004/2092 (96%)	1831 (91%)	170 (8%)	3 (0%)	54	84

All (3) Ramachandran outliers are listed below:

Mol	Chain	Res	Type
1	G	297	ARG
2	A	510	ALA
2	E	510	ALA

5.3.2 Protein sidechains [i](#)

In the following table, the Percentiles column shows the percent sidechain outliers of the chain as a percentile score with respect to all PDB entries followed by that with respect to all EM entries.

The Analysed column shows the number of residues for which the sidechain conformation was analysed, and the total number of residues.

Mol	Chain	Analysed	Rotameric	Outliers	Percentiles	
1	G	128/129 (99%)	109 (85%)	19 (15%)	3	18
1	H	129/129 (100%)	121 (94%)	8 (6%)	18	48
2	A	219/252 (87%)	212 (97%)	7 (3%)	39	63
2	B	219/252 (87%)	217 (99%)	2 (1%)	78	87
2	C	219/252 (87%)	218 (100%)	1 (0%)	88	93
2	D	219/252 (87%)	216 (99%)	3 (1%)	67	81
2	E	220/252 (87%)	216 (98%)	4 (2%)	59	77
2	F	221/252 (88%)	219 (99%)	2 (1%)	78	87
All	All	1574/1770 (89%)	1528 (97%)	46 (3%)	45	65

All (46) residues with a non-rotameric sidechain are listed below:

Mol	Chain	Res	Type
1	G	164	LEU
1	G	166	LEU
1	G	168	LYS
1	G	180	ARG
1	G	183	LYS
1	G	212	LYS
1	G	213	LYS
1	G	215	CYS
1	G	216	SER
1	G	221	GLN
1	G	229	THR

Continued on next page...

Continued from previous page...

Mol	Chain	Res	Type
1	G	253	MET
1	G	259	GLU
1	G	263	LEU
1	G	269	ARG
1	G	275	LEU
1	G	294	GLU
1	G	297	ARG
1	G	300	THR
2	B	506	LYS
2	B	507	HIS
2	C	352	ASN
2	D	356	LYS
2	D	359	LYS
2	D	506	LYS
2	E	505	ARG
2	E	506	LYS
2	E	507	HIS
2	E	508	LYS
2	F	507	HIS
2	F	508	LYS
2	A	310	LYS
2	A	503	ILE
2	A	504	ASP
2	A	506	LYS
2	A	508	LYS
2	A	511	VAL
2	A	513	ILE
1	H	157	SER
1	H	158	ARG
1	H	225	HIS
1	H	230	CYS
1	H	233	TYR
1	H	292	LEU
1	H	301	THR
1	H	302	LEU

Sometimes sidechains can be flipped to improve hydrogen bonding and reduce clashes. All (6) such sidechains are listed below:

Mol	Chain	Res	Type
2	B	536	HIS
2	C	405	GLN
2	F	344	ASN

Continued on next page...

Continued from previous page...

Mol	Chain	Res	Type
2	F	507	HIS
1	H	176	HIS
1	H	299	GLN

5.3.3 RNA [i](#)

There are no RNA molecules in this entry.

5.4 Non-standard residues in protein, DNA, RNA chains [i](#)

There are no non-standard protein/DNA/RNA residues in this entry.

5.5 Carbohydrates [i](#)

There are no monosaccharides in this entry.

5.6 Ligand geometry [i](#)

There are no ligands in this entry.

5.7 Other polymers [i](#)

There are no such residues in this entry.

5.8 Polymer linkage issues [i](#)

There are no chain breaks in this entry.

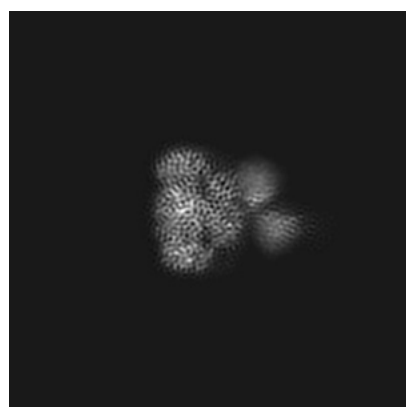
6 Map visualisation [i](#)

This section contains visualisations of the EMDB entry EMD-11852. These allow visual inspection of the internal detail of the map and identification of artifacts.

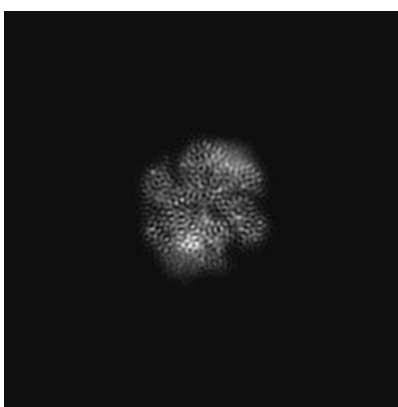
No raw map or half-maps were deposited for this entry and therefore no images, graphs, etc. pertaining to the raw map can be shown.

6.1 Orthogonal projections [i](#)

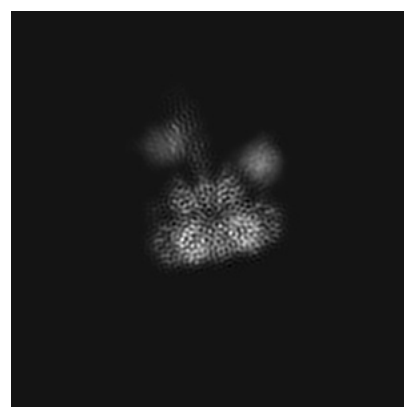
6.1.1 Primary map



X



Y



Z

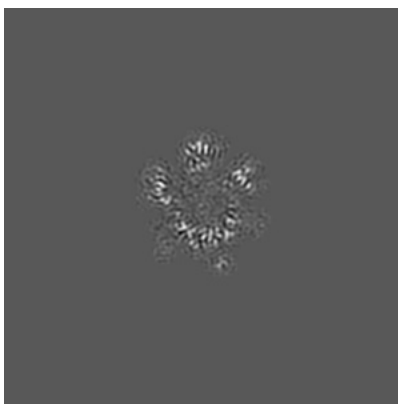
The images above show the map projected in three orthogonal directions.

6.2 Central slices [i](#)

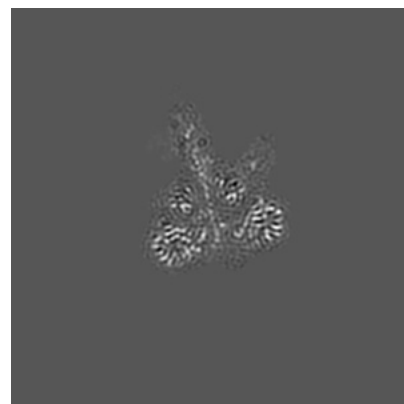
6.2.1 Primary map



X Index: 150



Y Index: 150



Z Index: 150

The images above show central slices of the map in three orthogonal directions.

6.3 Largest variance slices [i](#)

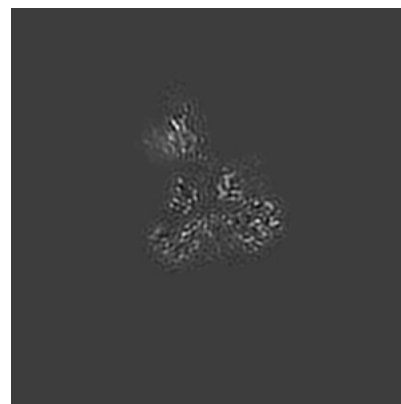
6.3.1 Primary map



X Index: 129



Y Index: 135

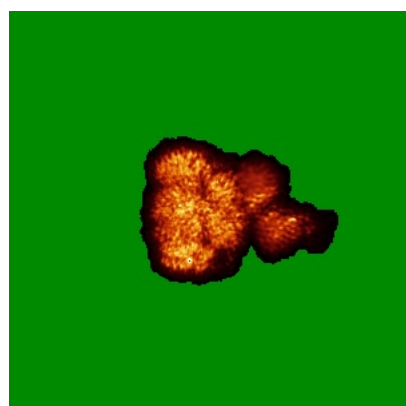


Z Index: 142

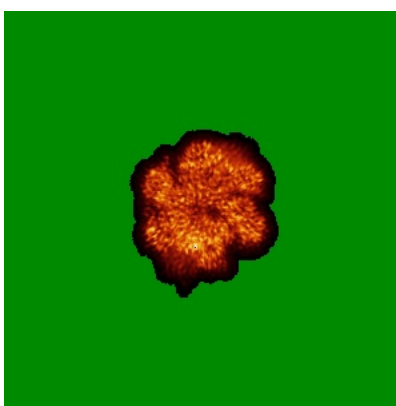
The images above show the largest variance slices of the map in three orthogonal directions.

6.4 Orthogonal standard-deviation projections (False-color) [i](#)

6.4.1 Primary map



X



Y



Z

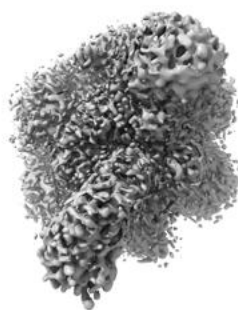
The images above show the map standard deviation projections with false color in three orthogonal directions. Minimum values are shown in green, max in blue, and dark to light orange shades represent small to large values respectively.

6.5 Orthogonal surface views [i](#)

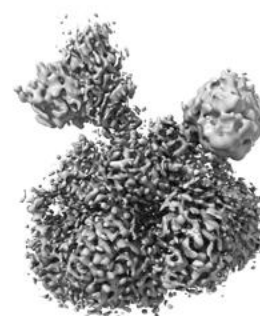
6.5.1 Primary map



X



Y



Z

The images above show the 3D surface view of the map at the recommended contour level 3.0. These images, in conjunction with the slice images, may facilitate assessment of whether an appropriate contour level has been provided.

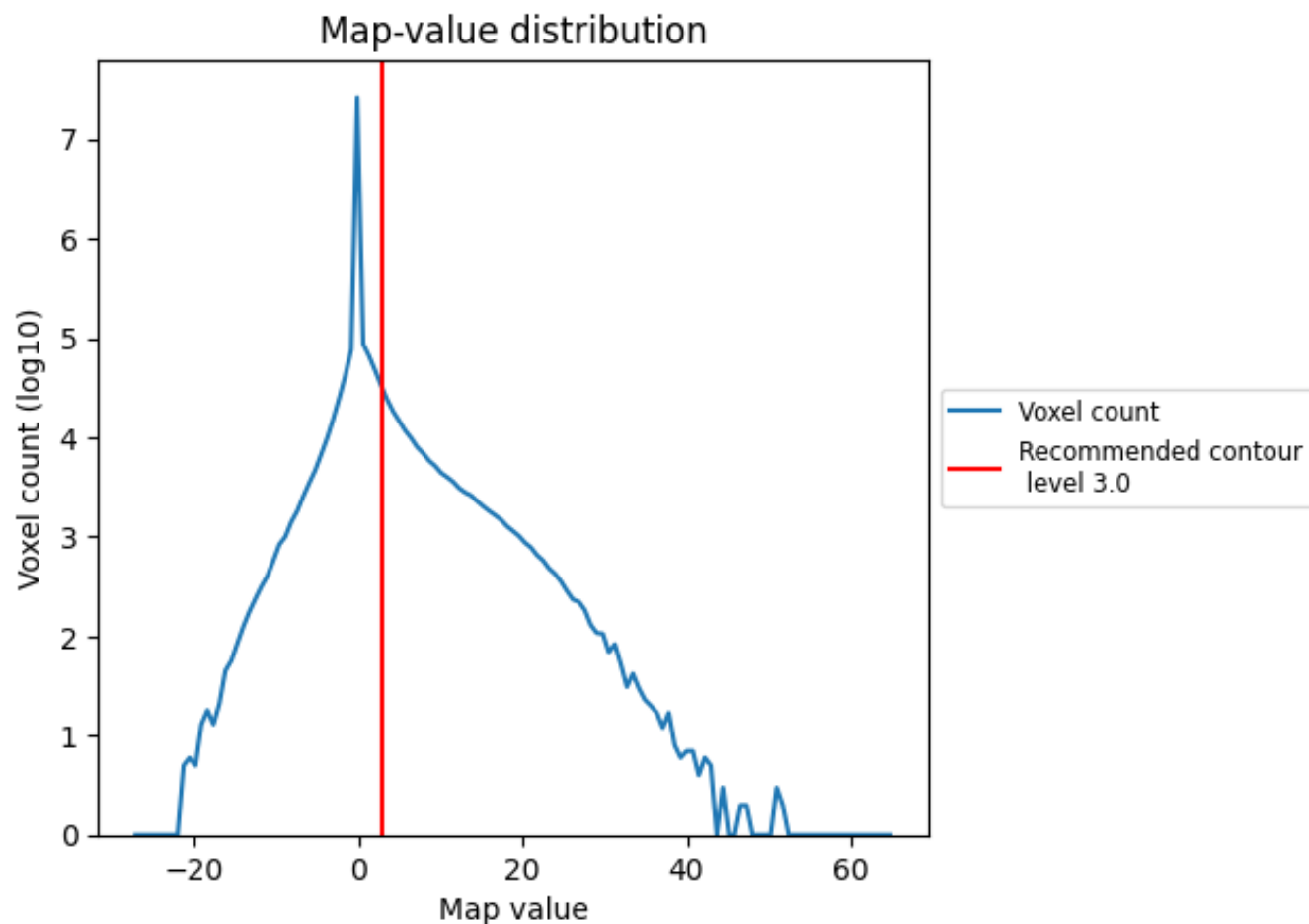
6.6 Mask visualisation [i](#)

This section was not generated. No masks/segmentation were deposited.

7 Map analysis [i](#)

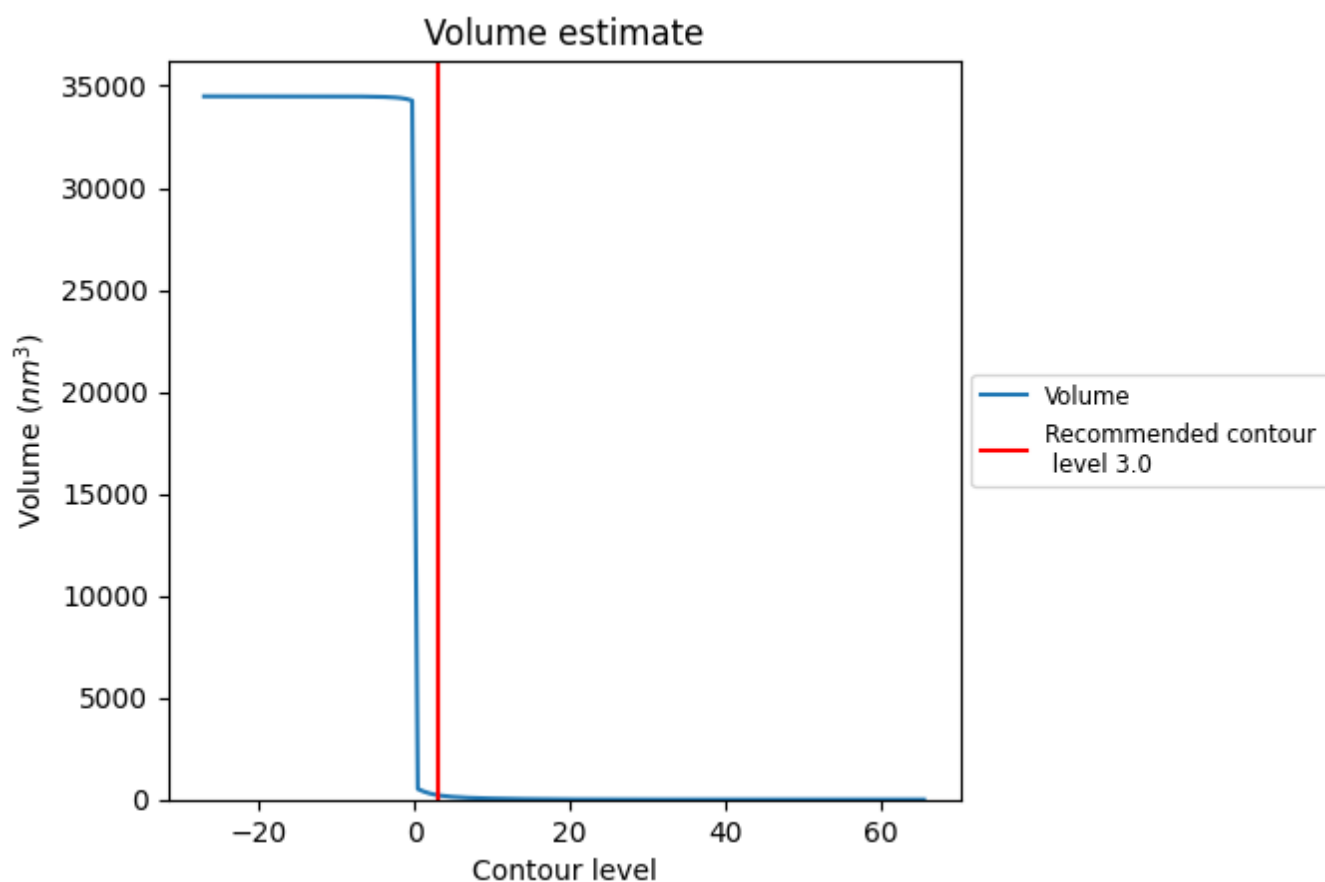
This section contains the results of statistical analysis of the map.

7.1 Map-value distribution [i](#)



The map-value distribution is plotted in 128 intervals along the x-axis. The y-axis is logarithmic. A spike in this graph at zero usually indicates that the volume has been masked.

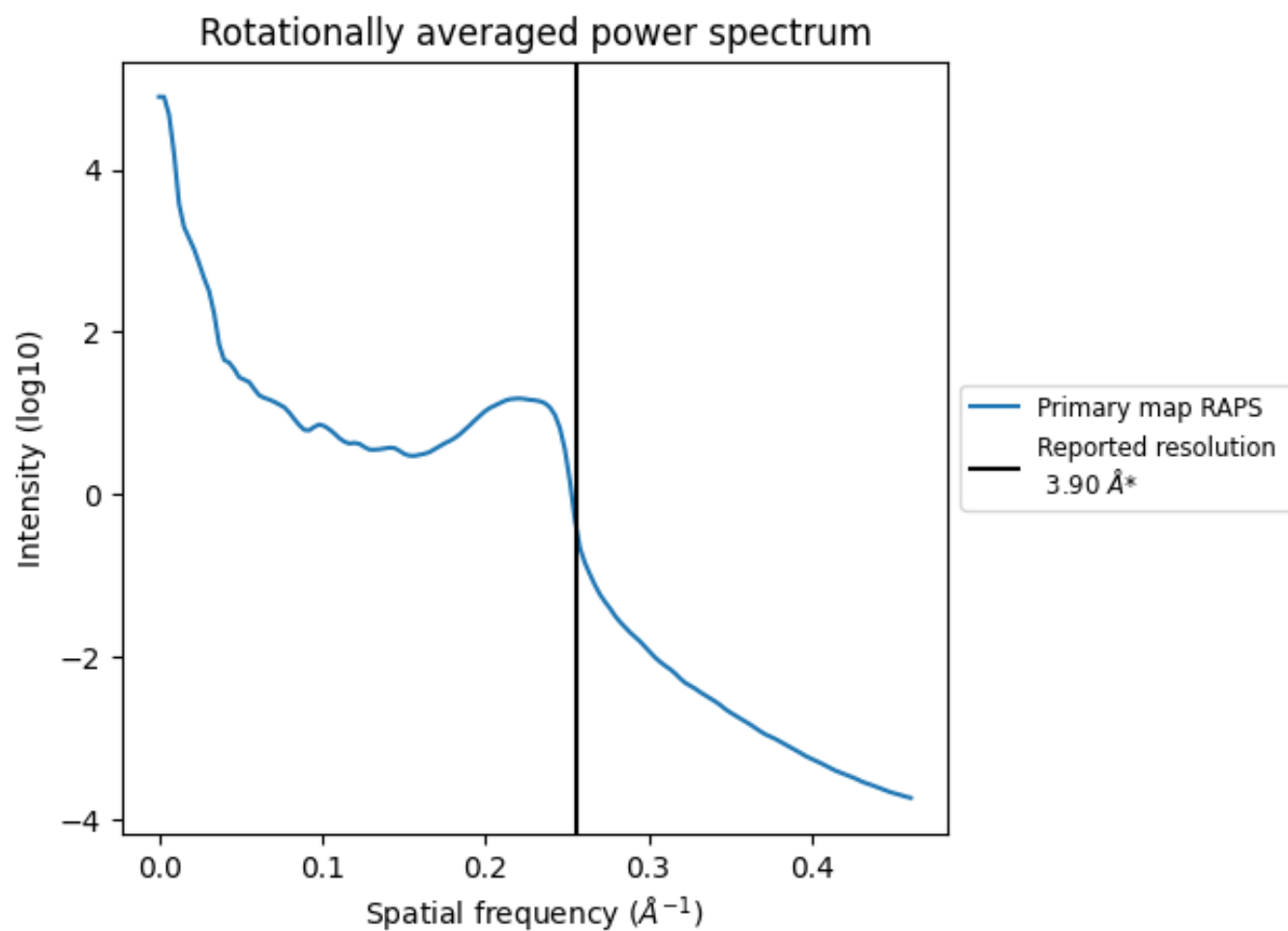
7.2 Volume estimate [i](#)



The volume at the recommended contour level is 214 nm^3 ; this corresponds to an approximate mass of 194 kDa.

The volume estimate graph shows how the enclosed volume varies with the contour level. The recommended contour level is shown as a vertical line and the intersection between the line and the curve gives the volume of the enclosed surface at the given level.

7.3 Rotationally averaged power spectrum ⓘ

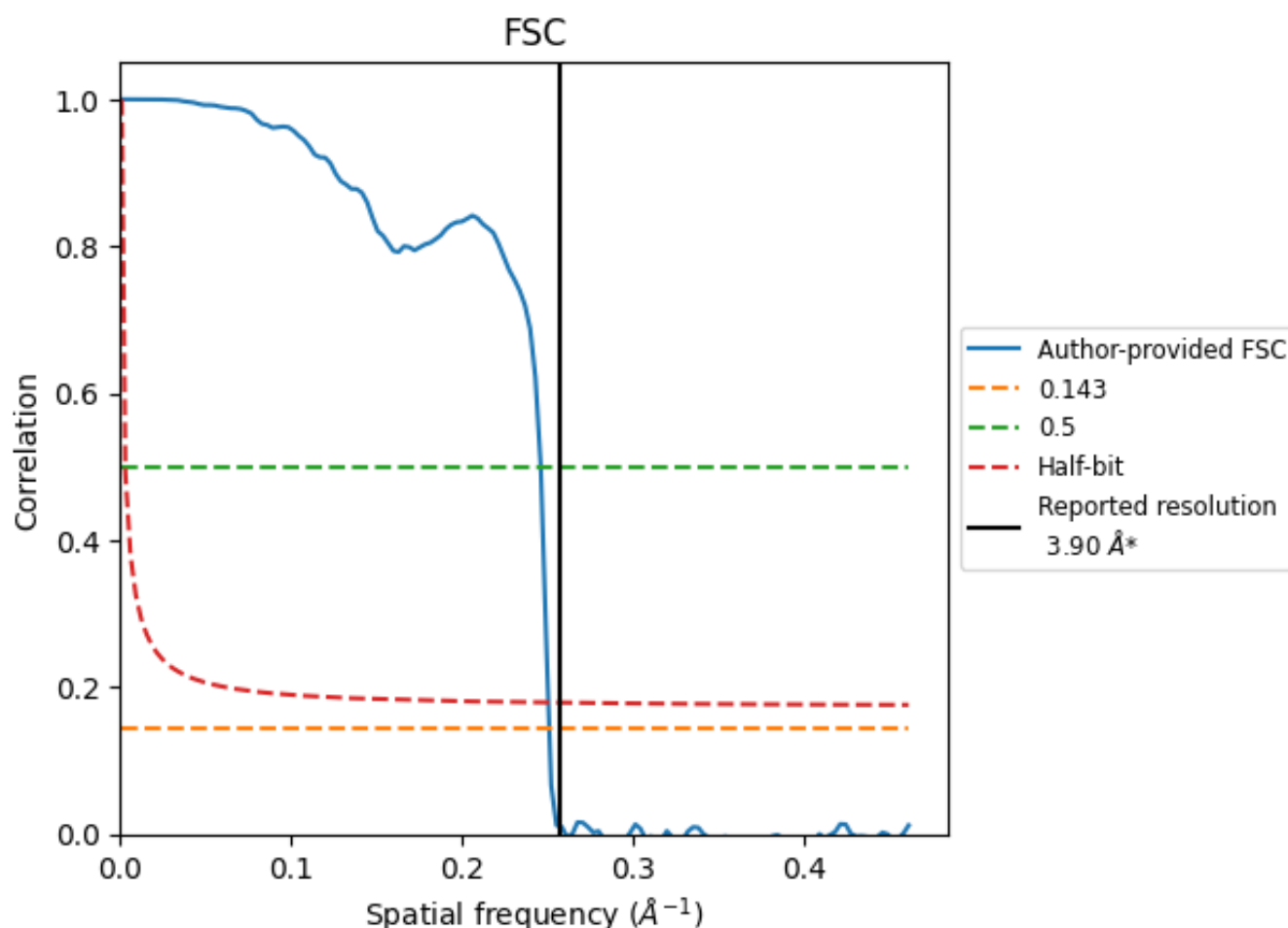


*Reported resolution corresponds to spatial frequency of 0.256 Å⁻¹

8 Fourier-Shell correlation [i](#)

Fourier-Shell Correlation (FSC) is the most commonly used method to estimate the resolution of single-particle and subtomogram-averaged maps. The shape of the curve depends on the imposed symmetry, mask and whether or not the two 3D reconstructions used were processed from a common reference. The reported resolution is shown as a black line. A curve is displayed for the half-bit criterion in addition to lines showing the 0.143 gold standard cut-off and 0.5 cut-off.

8.1 FSC [i](#)



*Reported resolution corresponds to spatial frequency of 0.256 \AA^{-1}

8.2 Resolution estimates [i](#)

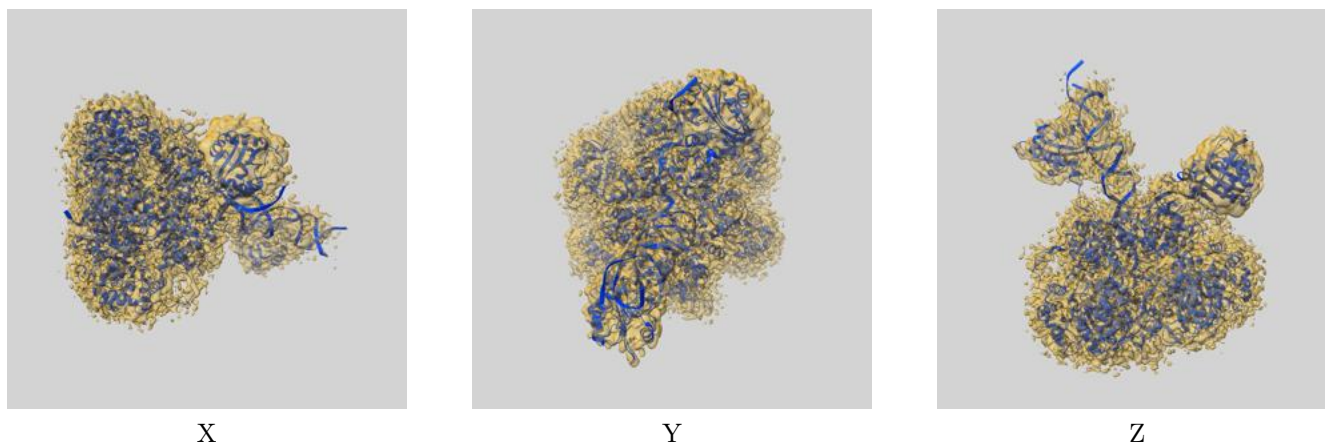
Resolution estimate (Å)	Estimation criterion (FSC cut-off)		
	0.143	0.5	Half-bit
Reported by author	3.90	-	-
Author-provided FSC curve	3.99	4.07	4.00
Unmasked-calculated*	-	-	-

*Resolution estimate based on FSC curve calculated by comparison of deposited half-maps.

9 Map-model fit [i](#)

This section contains information regarding the fit between EMDB map EMD-11852 and PDB model 7APD. Per-residue inclusion information can be found in section [3](#) on page [6](#).

9.1 Map-model overlay [i](#)



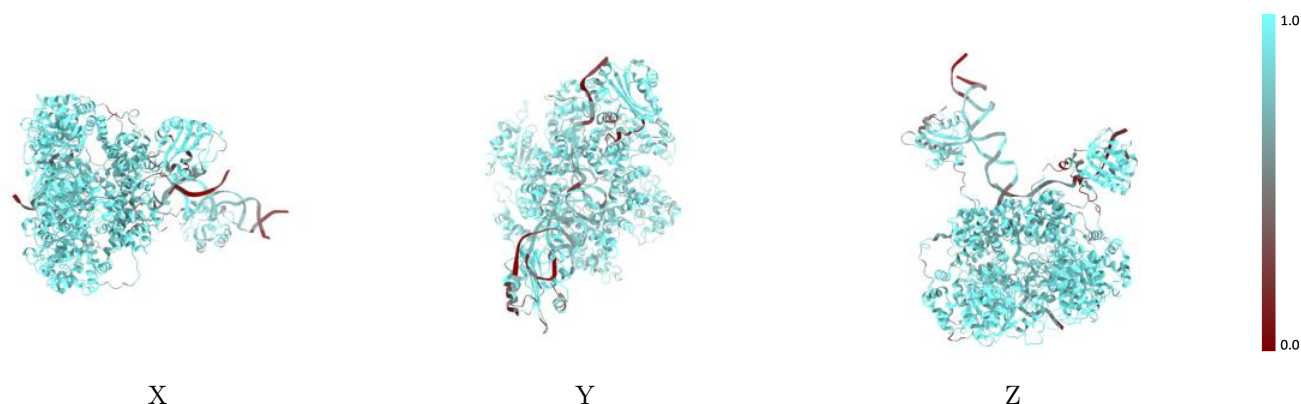
The images above show the 3D surface view of the map at the recommended contour level 3.0 at 50% transparency in yellow overlaid with a ribbon representation of the model coloured in blue. These images allow for the visual assessment of the quality of fit between the atomic model and the map.

9.2 Q-score mapped to coordinate model [i](#)



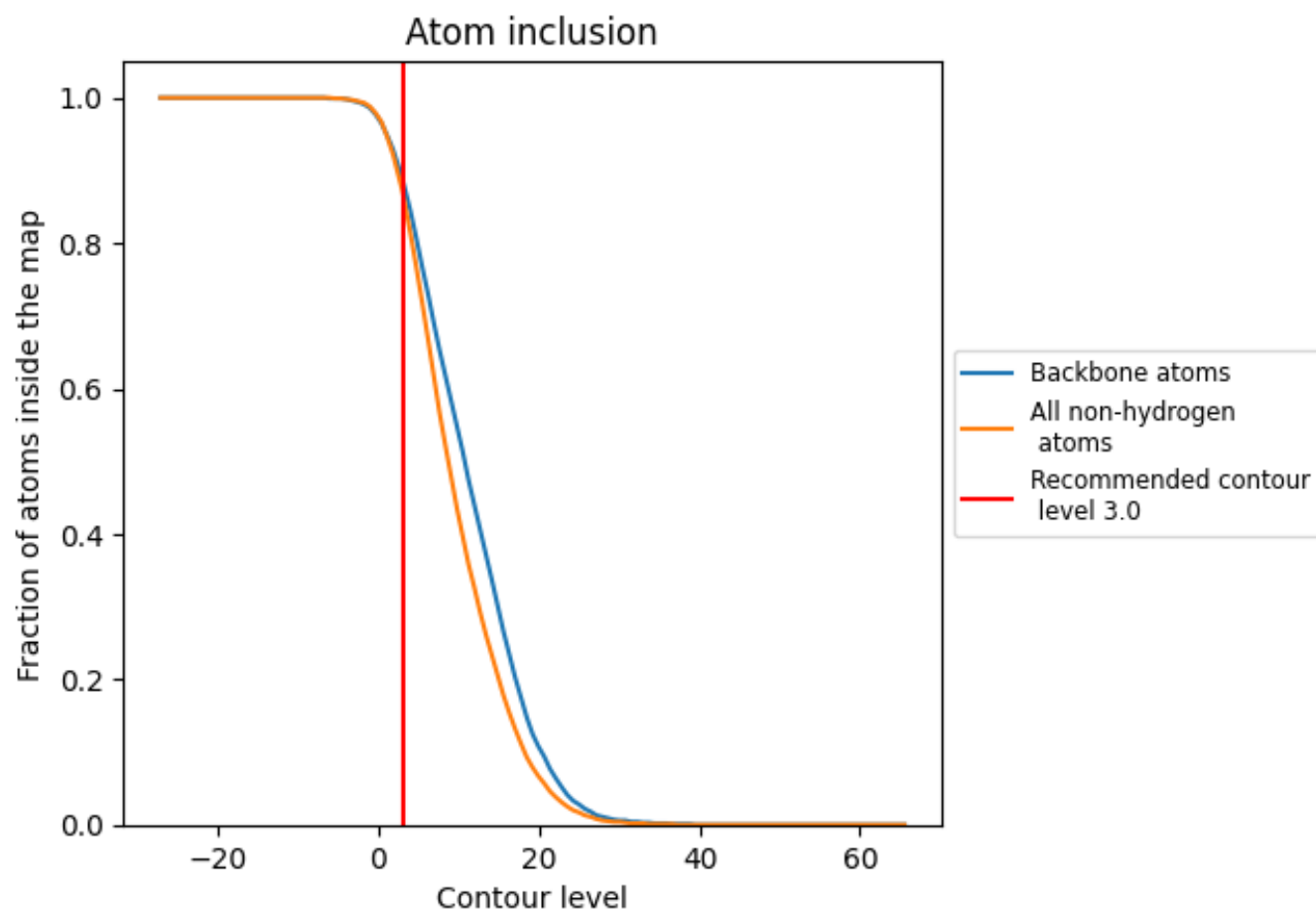
The images above show the model with each residue coloured according to its Q-score. This shows their resolvability in the map with higher Q-score values reflecting better resolvability. Please note: Q-score is calculating the resolvability of atoms, and thus high values are only expected at resolutions at which atoms can be resolved. Low Q-score values may therefore be expected for many entries.

9.3 Atom inclusion mapped to coordinate model [i](#)



The images above show the model with each residue coloured according to its atom inclusion. This shows to what extent they are inside the map at the recommended contour level (3.0).

9.4 Atom inclusion [i](#)



At the recommended contour level, 89% of all backbone atoms, 87% of all non-hydrogen atoms, are inside the map.

9.5 Map-model fit summary ⓘ

The table lists the average atom inclusion at the recommended contour level (3.0) and Q-score for the entire model and for each chain.

Chain	Atom inclusion	Q-score
All	<div></div> 0.8720	<div></div> 0.3960
A	<div></div> 0.9040	<div></div> 0.4520
B	<div></div> 0.9220	<div></div> 0.4570
C	<div></div> 0.9150	<div></div> 0.4590
D	<div></div> 0.9300	<div></div> 0.4800
E	<div></div> 0.9220	<div></div> 0.4590
F	<div></div> 0.9200	<div></div> 0.4620
G	<div></div> 0.8060	<div></div> 0.2930
H	<div></div> 0.8040	<div></div> 0.0130
P	<div></div> 0.6380	<div></div> 0.2610
T	<div></div> 0.5110	<div></div> 0.1420

1.0

0.0

<0.0