



# wwPDB X-ray Structure Validation Summary Report ⓘ

Dec 15, 2024 – 09:00 AM EST

PDB ID : 6BPL  
Title : E. coli MsbA in complex with LPS and inhibitor G907  
Authors : Ho, H.; Koth, C.M.; Payandeh, J.  
Deposited on : 2017-11-23  
Resolution : 2.91 Å(reported)

This is a wwPDB X-ray Structure Validation Summary Report for a publicly released PDB entry.

We welcome your comments at [validation@mail.wwpdb.org](mailto:validation@mail.wwpdb.org)

A user guide is available at

<https://www.wwpdb.org/validation/2017/XrayValidationReportHelp>

with specific help available everywhere you see the ⓘ symbol.

The types of validation reports are described at

<http://www.wwpdb.org/validation/2017/FAQs#types>.

---

The following versions of software and data (see [references ⓘ](#)) were used in the production of this report:

MolProbity	:	4.02b-467
Mogul	:	2022.3.0, CSD as543be (2022)
Xtriage (Phenix)	:	1.21
EDS	:	3.0
buster-report	:	1.1.7 (2018)
Percentile statistics	:	20231227.v01 (using entries in the PDB archive December 27th 2023)
CCP4	:	9.0.004 (Gargrove)
Density-Fitness	:	1.0.11
Ideal geometry (proteins)	:	Engh & Huber (2001)
Ideal geometry (DNA, RNA)	:	Parkinson et al. (1996)
Validation Pipeline (wwPDB-VP)	:	2.40

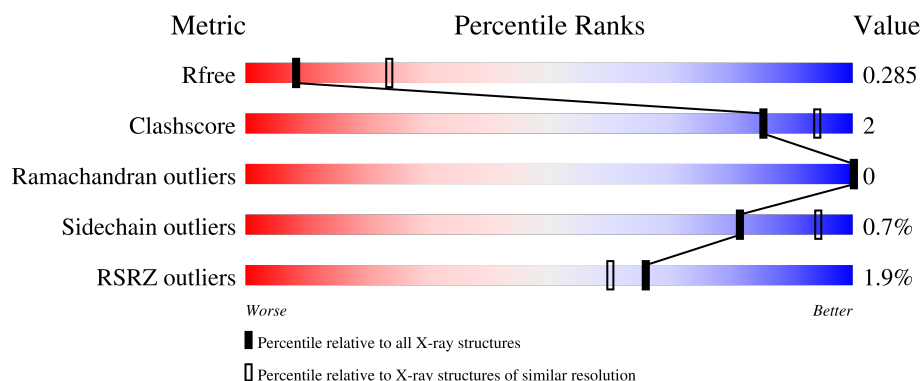
# 1 Overall quality at a glance

The following experimental techniques were used to determine the structure:

## *X-RAY DIFFRACTION*

The reported resolution of this entry is 2.91 Å.

Percentile scores (ranging between 0-100) for global validation metrics of the entry are shown in the following graphic. The table shows the number of entries on which the scores are based.



Metric	Whole archive (#Entries)	Similar resolution (#Entries, resolution range(Å))
$R_{free}$	164625	2335 (2.90-2.90)
Clashscore	180529	2564 (2.90-2.90)
Ramachandran outliers	177936	2514 (2.90-2.90)
Sidechain outliers	177891	2516 (2.90-2.90)
RSRZ outliers	164620	2337 (2.90-2.90)

The table below summarises the geometric issues observed across the polymeric chains and their fit to the electron density. The red, orange, yellow and green segments of the lower bar indicate the fraction of residues that contain outliers for  $\geq 3$ , 2, 1 and 0 types of geometric quality criteria respectively. A grey segment represents the fraction of residues that are not modelled. The numeric value for each fraction is indicated below the corresponding segment, with a dot representing fractions  $\leq 5\%$ . The upper red bar (where present) indicates the fraction of residues that have poor fit to the electron density. The numeric value is given above the bar.

Mol	Chain	Length	Quality of chain
1	A	582	<div> <div>2%</div> <div> <div></div> <div>94%</div> <div>5%</div> </div> </div>
1	B	582	<div> <div>2%</div> <div> <div></div> <div>94%</div> <div></div> </div> </div>
2	C	5	<div> <div>40%</div> <div>60%</div> </div>
3	D	4	<div> <div>50%</div> <div>50%</div> </div>

## 2 Entry composition [i](#)

There are 11 unique types of molecules in this entry. The entry contains 9180 atoms, of which 0 are hydrogens and 0 are deuteriums.

In the tables below, the ZeroOcc column contains the number of atoms modelled with zero occupancy, the AltConf column contains the number of residues with at least one atom in alternate conformation and the Trace column contains the number of residues modelled with at most 2 atoms.

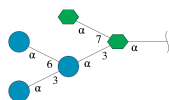
- Molecule 1 is a protein called Lipid A export ATP-binding/permease protein MsbA.

Mol	Chain	Residues	Atoms					ZeroOcc	AltConf	Trace
1	A	576	Total	C	N	O	S	0	0	0
			4469	2829	778	835	27			
1	B	565	Total	C	N	O	S	0	0	0
			4358	2764	757	812	25			

There are 6 discrepancies between the modelled and reference sequences:

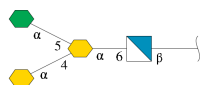
Chain	Residue	Modelled	Actual	Comment	Reference
A	1	SER	-	expression tag	UNP Q8FJB1
A	65	VAL	MET	conflict	UNP Q8FJB1
A	84	VAL	ILE	conflict	UNP Q8FJB1
B	1	SER	-	expression tag	UNP Q8FJB1
B	65	VAL	MET	conflict	UNP Q8FJB1
B	84	VAL	ILE	conflict	UNP Q8FJB1

- Molecule 2 is an oligosaccharide called alpha-D-glucopyranose-(1-3)-[alpha-D-glucopyranose-(1-6)]alpha-D-glucopyranose-(1-3)-[L-glycero-alpha-D-manno-heptopyranose-(1-7)]L-glycero-alpha-D-manno-heptopyranose.



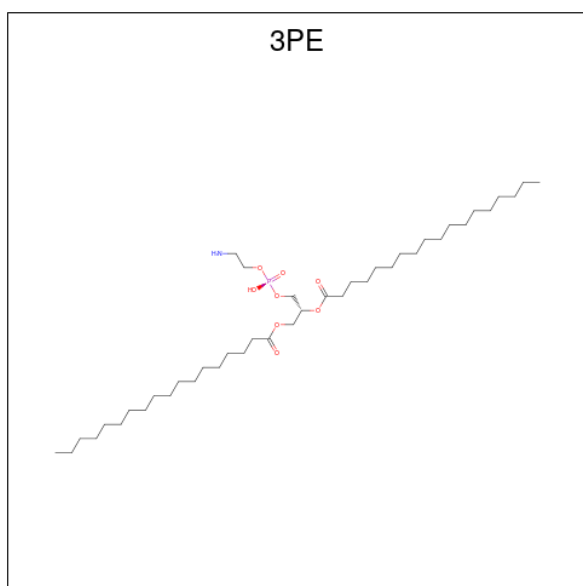
Mol	Chain	Residues	Atoms			ZeroOcc	AltConf	Trace
2	C	5	Total	C	O	0	0	0
			59	32	27			

- Molecule 3 is an oligosaccharide called 3-deoxy-alpha-D-manno-oct-2-ulopyranosonic acid-(2-4)-[L-glycero-alpha-D-manno-heptopyranose-(1-5)]3-deoxy-alpha-D-manno-oct-2-ulopyranosonic acid-(2-6)-2-amino-2-deoxy-beta-D-glucopyranose.



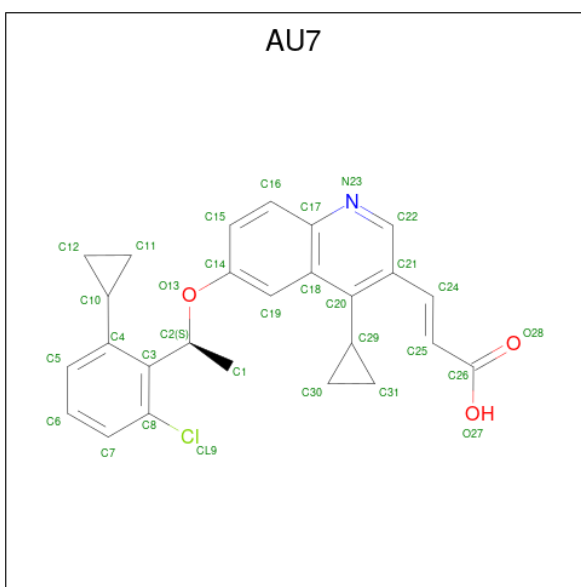
Mol	Chain	Residues	Atoms				ZeroOcc	AltConf	Trace
3	D	4	Total	C	N	O	0	0	0
			54	29	1	24			

- Molecule 4 is 1,2-Distearoyl-sn-glycerophosphoethanolamine (three-letter code: 3PE) (formula:  $C_{41}H_{82}NO_8P$ ).



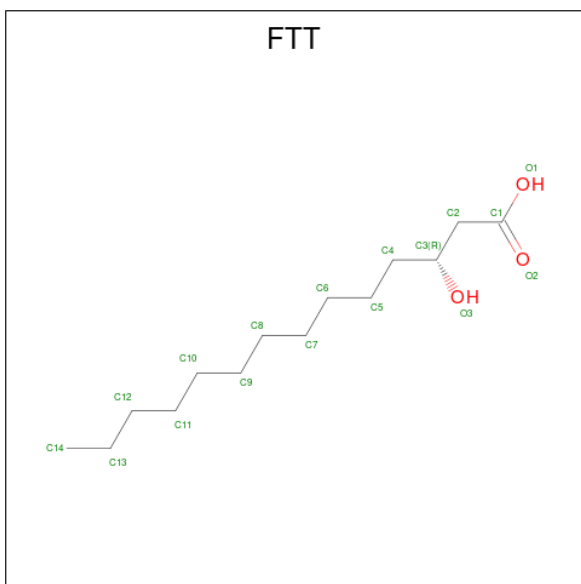
Mol	Chain	Residues	Atoms					ZeroOcc	AltConf	
4	A	1	Total 22	C 12	N 1	O 8	P 1	0	0	
4	B	1	Total 19	C 9	N 1	O 8	P 1	0	0	
4	B	1	Total 10		C 10		0			0
4	B	1	Total 7		C 7		0			0

- Molecule 5 is (2E)-3-{6-[(1S)-1-(2-chloro-6-cyclopropylphenyl)ethoxy]-4-cyclopropylquinolin-3-yl}prop-2-enoic acid (three-letter code: AU7) (formula:  $C_{26}H_{24}ClNO_3$ ).



Mol	Chain	Residues	Atoms					ZeroOcc	AltConf
5	A	1	Total	C	Cl	N	O	0	0
			31	26	1	1	3		
5	B	1	Total	C	Cl	N	O	0	0
			31	26	1	1	3		

- Molecule 6 is 3-HYDROXY-TETRADECANOIC ACID (three-letter code: FTT) (formula:  $C_{14}H_{28}O_3$ ).



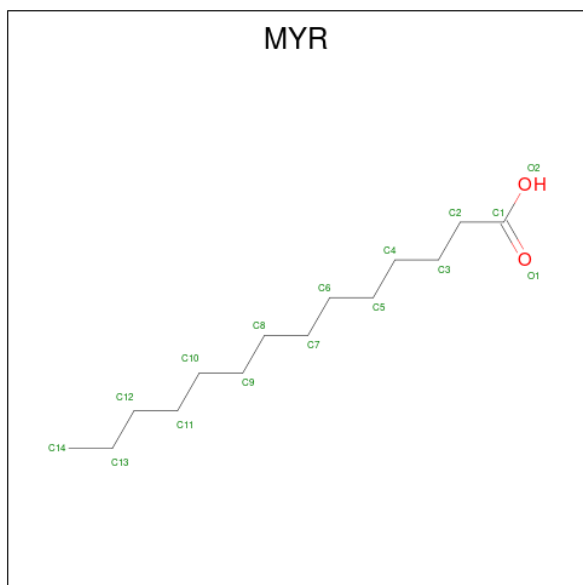
Mol	Chain	Residues	Atoms			ZeroOcc	AltConf
6	A	1	Total	C	O	0	0
			16	14	2		

*Continued on next page...*

*Continued from previous page...*

Mol	Chain	Residues	Atoms			ZeroOcc	AltConf
6	A	1	Total	C	O	0	0
			16	14	2		
6	A	1	Total	C	O	0	0
			16	14	2		
6	B	1	Total	C	O	0	0
			16	14	2		

- Molecule 7 is MYRISTIC ACID (three-letter code: MYR) (formula:  $C_{14}H_{28}O_2$ ).



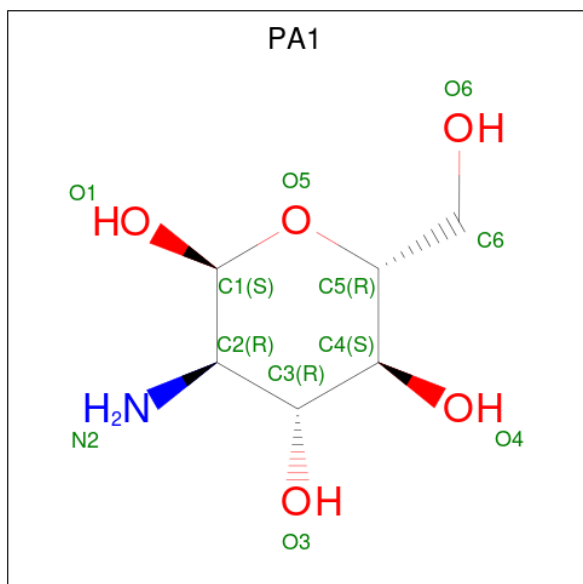
Mol	Chain	Residues	Atoms			ZeroOcc	AltConf
7	A	1	Total	C	O	0	0
			15	14	1		

- Molecule 8 is PHOSPHATE ION (three-letter code: PO4) (formula:  $O_4P$ ).



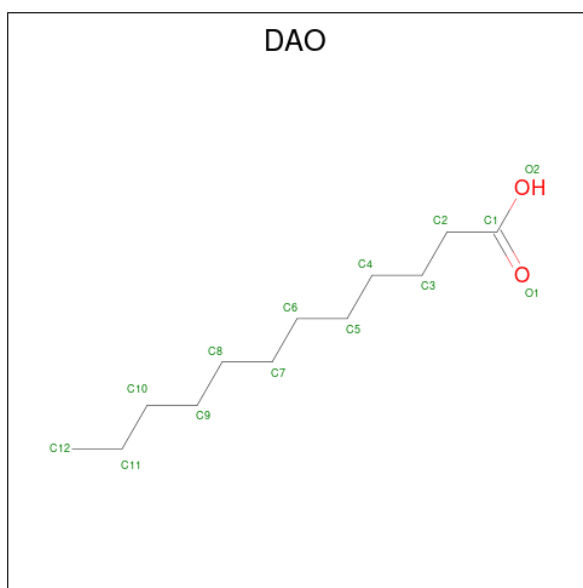
Mol	Chain	Residues	Atoms			ZeroOcc	AltConf
8	A	1	Total	O	P	0	0
			4	3	1		
8	B	1	Total	O	P	0	0
			4	3	1		

- Molecule 9 is 2-amino-2-deoxy-alpha-D-glucopyranose (three-letter code: PA1) (formula:  $C_6H_{13}NO_5$ ).



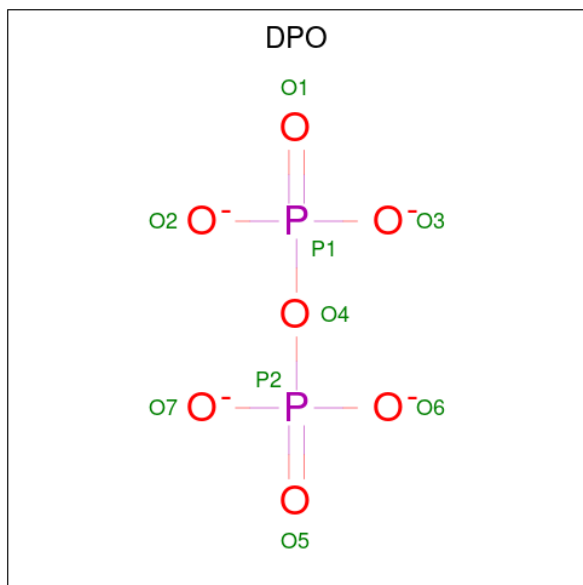
Mol	Chain	Residues	Atoms				ZeroOcc	AltConf
9	B	1	Total	C	N	O	0	0
			12	6	1	5		

- Molecule 10 is LAURIC ACID (three-letter code: DAO) (formula:  $C_{12}H_{24}O_2$ ).



Mol	Chain	Residues	Atoms			ZeroOcc	AltConf
10	B	1	Total	C	O	0	0
			13	12	1		

- Molecule 11 is DIPHOSPHATE (three-letter code: DPO) (formula:  $O_7P_2$ ).



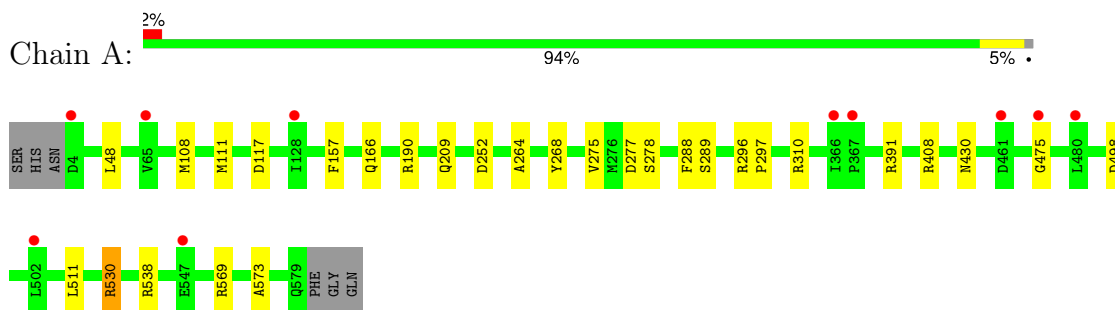
Mol	Chain	Residues	Atoms			ZeroOcc	AltConf
11	B	1	Total	O	P	0	0
			8	6	2		



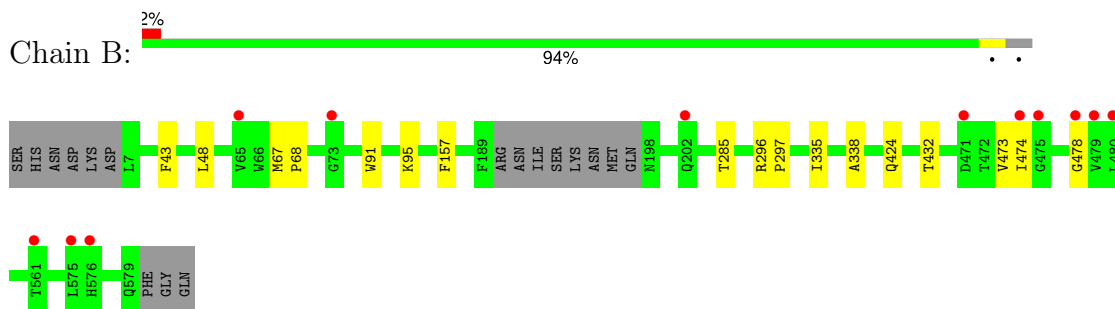
### 3 Residue-property plots

These plots are drawn for all protein, RNA, DNA and oligosaccharide chains in the entry. The first graphic for a chain summarises the proportions of the various outlier classes displayed in the second graphic. The second graphic shows the sequence view annotated by issues in geometry and electron density. Residues are color-coded according to the number of geometric quality criteria for which they contain at least one outlier: green = 0, yellow = 1, orange = 2 and red = 3 or more. A red dot above a residue indicates a poor fit to the electron density ( $RSRZ > 2$ ). Stretches of 2 or more consecutive residues without any outlier are shown as a green connector. Residues present in the sample, but not in the model, are shown in grey.

- Molecule 1: Lipid A export ATP-binding/permease protein MsbA



- Molecule 1: Lipid A export ATP-binding/permease protein MsbA



- Molecule 2: alpha-D-glucopyranose-(1-3)-[alpha-D-glucopyranose-(1-6)]alpha-D-glucopyranose-(1-3)-[L-glycero-alpha-D-manno-heptopyranose-(1-7)]L-glycero-alpha-D-manno-heptopyranose



- Molecule 3: 3-deoxy-alpha-D-manno-oct-2-ulopyranosonic acid-(2-4)-[L-glycero-alpha-D-manno-heptopyranose-(1-5)]3-deoxy-alpha-D-manno-oct-2-ulopyranosonic acid-(2-6)-2-amino-2-deoxy-beta-D-glucopyranose



## 4 Data and refinement statistics

Property	Value	Source
Space group	P 1 21 1	Depositor
Cell constants a, b, c, $\alpha$ , $\beta$ , $\gamma$	74.75Å 91.61Å 111.01Å 90.00° 89.39° 90.00°	Depositor
Resolution (Å)	39.90 – 2.91 39.90 – 2.91	Depositor EDS
% Data completeness (in resolution range)	89.6 (39.90-2.91) 89.5 (39.90-2.91)	Depositor EDS
$R_{merge}$	0.10	Depositor
$R_{sym}$	(Not available)	Depositor
$\langle I/\sigma(I) \rangle$ <sup>1</sup>	1.36 (at 2.90Å)	Xtriage
Refinement program	PHENIX (dev_2747: ???)	Depositor
R, $R_{free}$	0.233 , 0.283 0.242 , 0.285	Depositor DCC
$R_{free}$ test set	1678 reflections (4.99%)	wwPDB-VP
Wilson B-factor (Å <sup>2</sup> )	79.9	Xtriage
Anisotropy	0.191	Xtriage
Bulk solvent $k_{sol}$ (e/Å <sup>3</sup> ), $B_{sol}$ (Å <sup>2</sup> )	0.31 , 46.6	EDS
L-test for twinning <sup>2</sup>	$\langle  L  \rangle = 0.48$ , $\langle L^2 \rangle = 0.30$	Xtriage
Estimated twinning fraction	0.027 for h,-k,-l	Xtriage
$F_o, F_c$ correlation	0.92	EDS
Total number of atoms	9180	wwPDB-VP
Average B, all atoms (Å <sup>2</sup> )	77.0	wwPDB-VP

Xtriage's analysis on translational NCS is as follows: *The largest off-origin peak in the Patterson function is 3.93% of the height of the origin peak. No significant pseudotranslation is detected.*

<sup>1</sup>Intensities estimated from amplitudes.

<sup>2</sup>Theoretical values of  $\langle |L| \rangle$ ,  $\langle L^2 \rangle$  for acentric reflections are 0.5, 0.333 respectively for untwinned datasets, and 0.375, 0.2 for perfectly twinned datasets.

## 5 Model quality [i](#)

### 5.1 Standard geometry [i](#)

Bond lengths and bond angles in the following residue types are not validated in this section: FTT, AU7, DAO, KDO, PA1, DPO, PO4, GLC, MYR, GMH, 3PE, GCS

The Z score for a bond length (or angle) is the number of standard deviations the observed value is removed from the expected value. A bond length (or angle) with  $|Z| > 5$  is considered an outlier worth inspection. RMSZ is the root-mean-square of all Z scores of the bond lengths (or angles).

Mol	Chain	Bond lengths		Bond angles	
		RMSZ	# Z  >5	RMSZ	# Z  >5
1	A	0.25	0/4534	0.43	0/6127
1	B	0.26	0/4421	0.43	0/5978
All	All	0.25	0/8955	0.43	0/12105

There are no bond length outliers.

There are no bond angle outliers.

There are no chirality outliers.

There are no planarity outliers.

### 5.2 Too-close contacts [i](#)

In the following table, the Non-H and H(model) columns list the number of non-hydrogen atoms and hydrogen atoms in the chain respectively. The H(added) column lists the number of hydrogen atoms added and optimized by MolProbity. The Clashes column lists the number of clashes within the asymmetric unit, whereas Symm-Clashes lists symmetry-related clashes.

Mol	Chain	Non-H	H(model)	H(added)	Clashes	Symm-Clashes
1	A	4469	0	4592	19	0
1	B	4358	0	4471	9	0
2	C	59	0	50	3	0
3	D	54	0	39	3	0
4	A	22	0	18	0	0
4	B	36	0	44	0	0
5	A	31	0	0	1	0
5	B	31	0	0	2	0
6	A	48	0	79	5	0
6	B	16	0	27	0	0
7	A	15	0	27	2	0

*Continued on next page...*

*Continued from previous page...*

Mol	Chain	Non-H	H(model)	H(added)	Clashes	Symm-Clashes
8	A	4	0	0	0	0
8	B	4	0	0	0	0
9	B	12	0	10	4	0
10	B	13	0	23	2	0
11	B	8	0	0	0	0
All	All	9180	0	9380	38	0

The all-atom clashscore is defined as the number of clashes found per 1000 atoms (including hydrogen atoms). The all-atom clashscore for this structure is 2.

The worst 5 of 38 close contacts within the same asymmetric unit are listed below, sorted by their clash magnitude.

Atom-1	Atom-2	Interatomic distance (Å)	Clash overlap (Å)
9:B:605:PA1:H62	3:D:2:KDO:H81	1.63	0.80
1:A:498:ASP:OD1	1:A:530:ARG:NH2	2.22	0.72
1:A:288:PHE:CD2	6:A:603:FTT:H141	2.25	0.71
1:A:289:SER:HB3	10:B:608:DAO:H92	1.81	0.63
1:B:296:ARG:HB2	1:B:297:PRO:HD3	1.82	0.60

There are no symmetry-related clashes.

## 5.3 Torsion angles [i](#)

### 5.3.1 Protein backbone [i](#)

In the following table, the Percentiles column shows the percent Ramachandran outliers of the chain as a percentile score with respect to all X-ray entries followed by that with respect to entries of similar resolution.

The Analysed column shows the number of residues for which the backbone conformation was analysed, and the total number of residues.

Mol	Chain	Analysed	Favoured	Allowed	Outliers	Percentiles	
1	A	574/582 (99%)	551 (96%)	23 (4%)	0	100	100
1	B	561/582 (96%)	532 (95%)	29 (5%)	0	100	100
All	All	1135/1164 (98%)	1083 (95%)	52 (5%)	0	100	100

There are no Ramachandran outliers to report.

### 5.3.2 Protein sidechains [i](#)

In the following table, the Percentiles column shows the percent sidechain outliers of the chain as a percentile score with respect to all X-ray entries followed by that with respect to entries of similar resolution.

The Analysed column shows the number of residues for which the sidechain conformation was analysed, and the total number of residues.

Mol	Chain	Analysed	Rotameric	Outliers	Percentiles	
1	A	491/496 (99%)	487 (99%)	4 (1%)	79	93
1	B	475/496 (96%)	472 (99%)	3 (1%)	84	95
All	All	966/992 (97%)	959 (99%)	7 (1%)	81	94

5 of 7 residues with a non-rotameric sidechain are listed below:

Mol	Chain	Res	Type
1	A	530	ARG
1	B	43	PHE
1	B	424	GLN
1	B	157	PHE
1	A	209	GLN

Sometimes sidechains can be flipped to improve hydrogen bonding and reduce clashes. There are no such sidechains identified.

### 5.3.3 RNA [i](#)

There are no RNA molecules in this entry.

## 5.4 Non-standard residues in protein, DNA, RNA chains [i](#)

There are no non-standard protein/DNA/RNA residues in this entry.

## 5.5 Carbohydrates [i](#)

9 monosaccharides are modelled in this entry.

In the following table, the Counts columns list the number of bonds (or angles) for which Mogul statistics could be retrieved, the number of bonds (or angles) that are observed in the model and the number of bonds (or angles) that are defined in the Chemical Component Dictionary. The Link column lists molecule types, if any, to which the group is linked. The Z score for a bond length (or angle) is the number of standard deviations the observed value is removed from the

expected value. A bond length (or angle) with  $|Z| > 2$  is considered an outlier worth inspection. RMSZ is the root-mean-square of all Z scores of the bond lengths (or angles).

Mol	Type	Chain	Res	Link	Bond lengths			Bond angles		
					Counts	RMSZ	$\# Z  > 2$	Counts	RMSZ	$\# Z  > 2$
2	GMH	C	1	2	13,13,14	0.48	0	16,18,20	1.07	1 (6%)
2	GLC	C	2	2	11,11,12	0.82	0	15,15,17	1.25	3 (20%)
2	GLC	C	3	2	11,11,12	0.39	0	15,15,17	3.08	2 (13%)
2	GLC	C	4	2	11,11,12	0.49	0	15,15,17	1.40	3 (20%)
2	GMH	C	5	2	13,13,14	0.60	0	16,18,20	1.40	2 (12%)
3	GCS	D	1	3,6,8	11,11,12	0.33	0	13,15,17	0.73	0
3	KDO	D	2	3	15,15,16	0.67	0	17,21,24	1.73	6 (35%)
3	KDO	D	3	3	15,15,16	0.67	0	17,21,24	1.38	4 (23%)
3	GMH	D	4	11,3	13,13,14	0.41	0	16,18,20	1.93	4 (25%)

In the following table, the Chirals column lists the number of chiral outliers, the number of chiral centers analysed, the number of these observed in the model and the number defined in the Chemical Component Dictionary. Similar counts are reported in the Torsion and Rings columns. '-' means no outliers of that kind were identified.

Mol	Type	Chain	Res	Link	Chirals	Torsions	Rings
2	GMH	C	1	2	-	5/6/23/26	0/1/1/1
2	GLC	C	2	2	-	2/2/19/22	0/1/1/1
2	GLC	C	3	2	-	2/2/19/22	0/1/1/1
2	GLC	C	4	2	-	0/2/19/22	0/1/1/1
2	GMH	C	5	2	-	4/6/23/26	0/1/1/1
3	GCS	D	1	3,6,8	-	2/2/19/22	0/1/1/1
3	KDO	D	2	3	-	1/10/26/30	0/1/1/1
3	KDO	D	3	3	-	4/10/26/30	0/1/1/1
3	GMH	D	4	11,3	-	4/6/23/26	0/1/1/1

There are no bond length outliers.

The worst 5 of 25 bond angle outliers are listed below:

Mol	Chain	Res	Type	Atoms	Z	Observed(°)	Ideal(°)
2	C	3	GLC	C1-O5-C5	10.69	126.51	112.19
3	D	4	GMH	C1-C2-C3	5.31	117.37	109.64
2	C	5	GMH	C1-C2-C3	3.86	115.27	109.64
3	D	2	KDO	O6-C6-C7	3.85	114.08	106.60
2	C	3	GLC	C1-C2-C3	3.83	115.22	109.64

There are no chirality outliers.

5 of 24 torsion outliers are listed below:

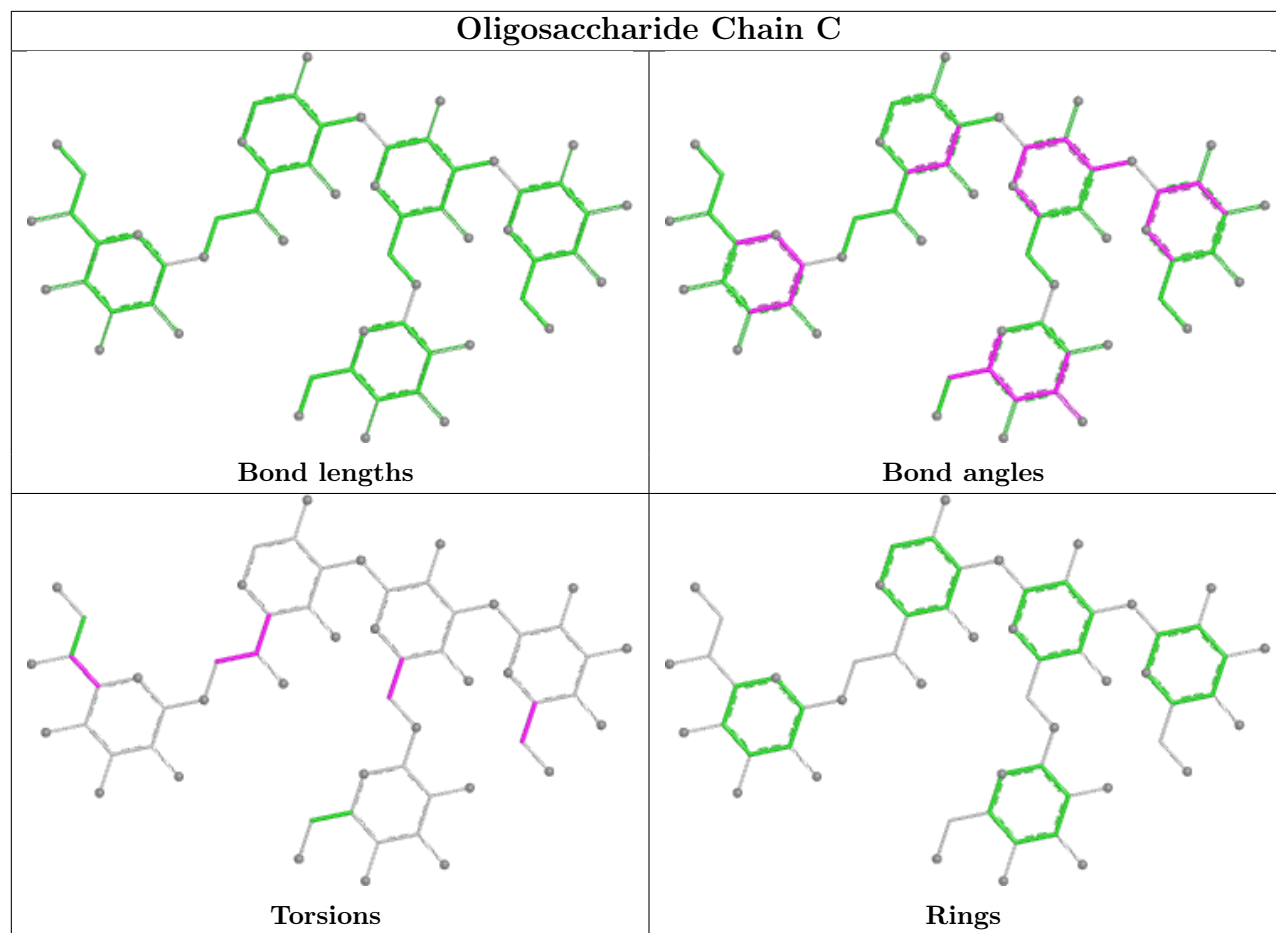
Mol	Chain	Res	Type	Atoms
2	C	1	GMH	C4-C5-C6-C7
2	C	1	GMH	C4-C5-C6-O6
2	C	1	GMH	O5-C5-C6-C7
2	C	1	GMH	O5-C5-C6-O6
2	C	5	GMH	C4-C5-C6-C7

There are no ring outliers.

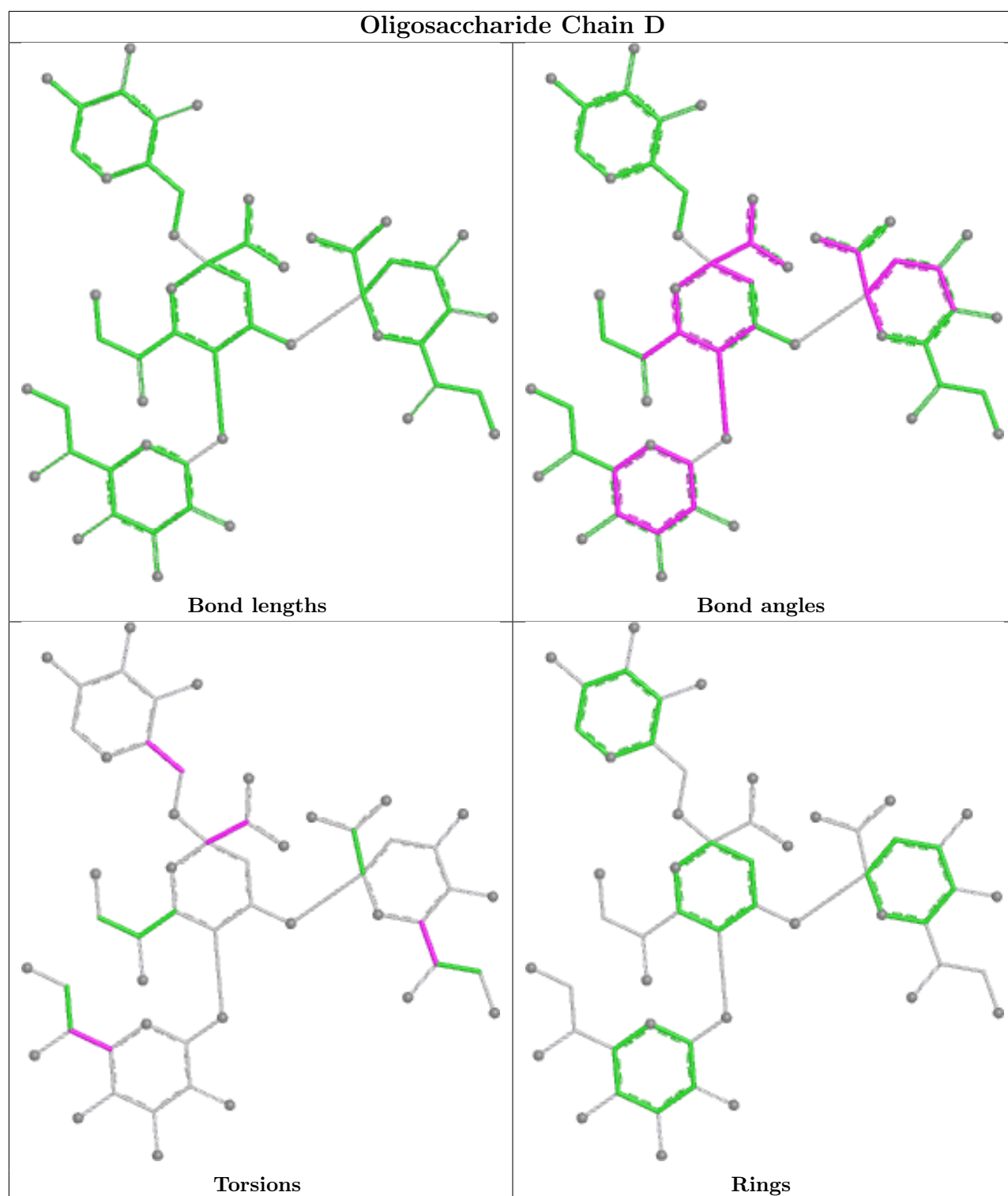
6 monomers are involved in 6 short contacts:

Mol	Chain	Res	Type	Clashes	Symm-Clashes
3	D	1	GCS	1	0
2	C	4	GLC	2	0
2	C	3	GLC	1	0
2	C	2	GLC	2	0
3	D	2	KDO	3	0
3	D	4	GMH	1	0

The following is a two-dimensional graphical depiction of Mogul quality analysis of bond lengths, bond angles, torsion angles, and ring geometry for oligosaccharide.







## 5.6 Ligand geometry [i](#)

16 ligands are modelled in this entry.

In the following table, the Counts columns list the number of bonds (or angles) for which Mogul statistics could be retrieved, the number of bonds (or angles) that are observed in the model and

the number of bonds (or angles) that are defined in the Chemical Component Dictionary. The Link column lists molecule types, if any, to which the group is linked. The Z score for a bond length (or angle) is the number of standard deviations the observed value is removed from the expected value. A bond length (or angle) with  $|Z| > 2$  is considered an outlier worth inspection. RMSZ is the root-mean-square of all Z scores of the bond lengths (or angles).

Mol	Type	Chain	Res	Link	Bond lengths			Bond angles		
					Counts	RMSZ	# Z  > 2	Counts	RMSZ	# Z  > 2
5	AU7	A	602	-	35,35,35	1.33	2 (5%)	48,51,51	1.43	7 (14%)
5	AU7	B	604	-	35,35,35	1.31	3 (8%)	48,51,51	1.43	6 (12%)
6	FTT	A	604	10,3	14,15,16	0.36	0	15,15,17	1.07	1 (6%)
4	3PE	B	601	-	18,18,50	2.00	3 (16%)	21,23,55	1.88	5 (23%)
6	FTT	A	603	9	14,15,16	0.36	0	15,15,17	0.98	1 (6%)
7	MYR	A	606	6	13,14,15	0.35	0	12,13,15	0.65	0
10	DAO	B	608	6	11,12,13	0.34	0	10,11,13	0.66	0
4	3PE	B	602	-	9,9,50	0.77	0	8,8,55	0.16	0
8	PO4	A	607	3	0,3,4	-	-	0,3,6	-	-
11	DPO	B	609	3	3,7,8	0.77	0	6,10,13	1.00	0
4	3PE	A	601	-	21,21,50	1.87	4 (19%)	24,26,55	1.58	4 (16%)
6	FTT	A	605	7,3	14,15,16	0.34	0	15,15,17	1.06	2 (13%)
9	PA1	B	605	6,8	12,12,12	0.74	0	16,17,17	1.43	2 (12%)
4	3PE	B	603	-	6,6,50	0.70	0	5,5,55	0.18	0
8	PO4	B	606	9	0,3,4	-	-	0,3,6	-	-
6	FTT	B	607	9	14,15,16	0.38	0	15,15,17	0.95	1 (6%)

In the following table, the Chirals column lists the number of chiral outliers, the number of chiral centers analysed, the number of these observed in the model and the number defined in the Chemical Component Dictionary. Similar counts are reported in the Torsion and Rings columns. '-' means no outliers of that kind were identified.

Mol	Type	Chain	Res	Link	Chirals	Torsions	Rings
5	AU7	A	602	-	-	1/21/25/25	0/5/5/5
5	AU7	B	604	-	-	2/21/25/25	0/5/5/5
6	FTT	A	604	10,3	-	5/14/14/15	-
4	3PE	B	601	-	-	10/20/20/54	-
6	FTT	A	603	9	-	5/14/14/15	-
7	MYR	A	606	6	-	4/12/12/13	-
10	DAO	B	608	6	-	8/10/10/11	-
4	3PE	B	602	-	-	4/7/7/54	-
11	DPO	B	609	3	-	1/2/5/6	-
4	3PE	A	601	-	-	6/24/24/54	-

Continued on next page...

*Continued from previous page...*

Mol	Type	Chain	Res	Link	Chirals	Torsions	Rings
6	FTT	A	605	7,3	-	3/14/14/15	-
9	PA1	B	605	6,8	-	2/2/22/22	0/1/1/1
4	3PE	B	603	-	-	2/4/4/54	-
6	FTT	B	607	9	-	3/14/14/15	-

The worst 5 of 12 bond length outliers are listed below:

Mol	Chain	Res	Type	Atoms	Z	Observed(Å)	Ideal(Å)
4	B	601	3PE	P-O13	6.09	1.83	1.59
4	A	601	3PE	P-O13	5.60	1.81	1.59
5	A	602	AU7	O28-C26	5.13	1.35	1.23
5	B	604	AU7	O28-C26	4.96	1.35	1.23
5	A	602	AU7	O27-C26	-3.32	1.21	1.30

The worst 5 of 29 bond angle outliers are listed below:

Mol	Chain	Res	Type	Atoms	Z	Observed(°)	Ideal(°)
4	B	601	3PE	O21-C21-C22	5.65	121.16	111.09
5	A	602	AU7	C21-C24-C25	-5.05	117.01	126.91
4	A	601	3PE	O21-C21-C22	4.46	121.14	111.48
5	B	604	AU7	C22-N23-C17	4.12	121.73	116.96
5	A	602	AU7	C22-N23-C17	4.06	121.66	116.96

There are no chirality outliers.

5 of 56 torsion outliers are listed below:

Mol	Chain	Res	Type	Atoms
4	B	601	3PE	C1-O11-P-O12
4	B	601	3PE	C1-O11-P-O14
4	B	601	3PE	C11-O13-P-O11
4	B	601	3PE	C11-O13-P-O14
4	B	601	3PE	C2-C1-O11-P

There are no ring outliers.

7 monomers are involved in 14 short contacts:

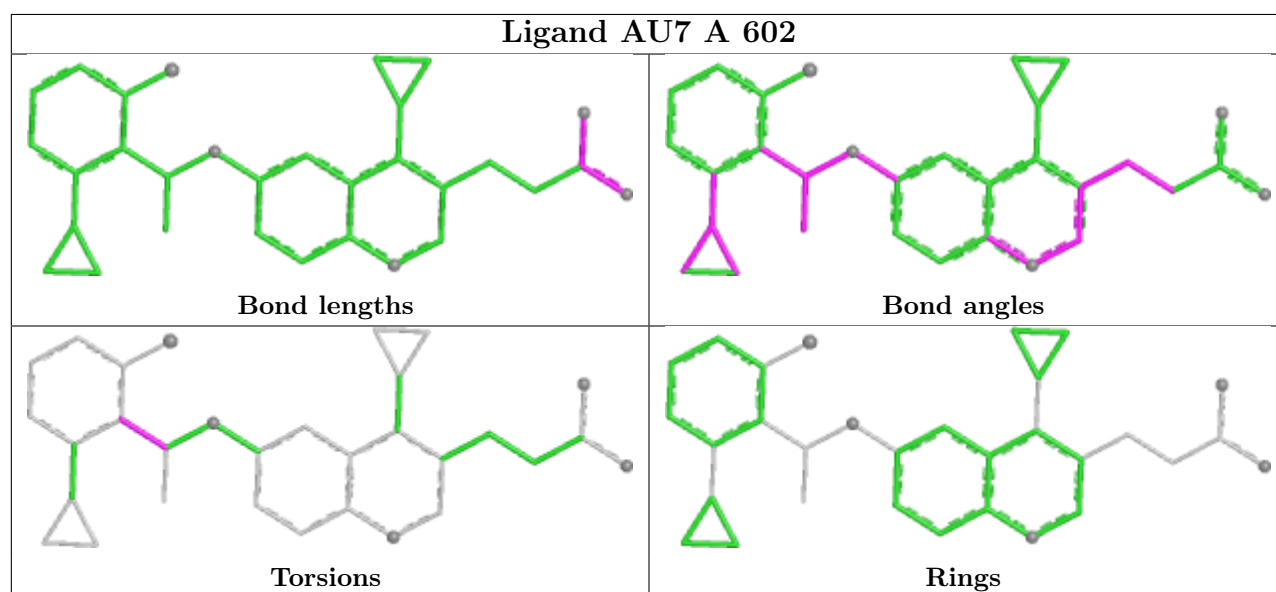
Mol	Chain	Res	Type	Clashes	Symm-Clashes
5	A	602	AU7	1	0
5	B	604	AU7	2	0
6	A	603	FTT	2	0

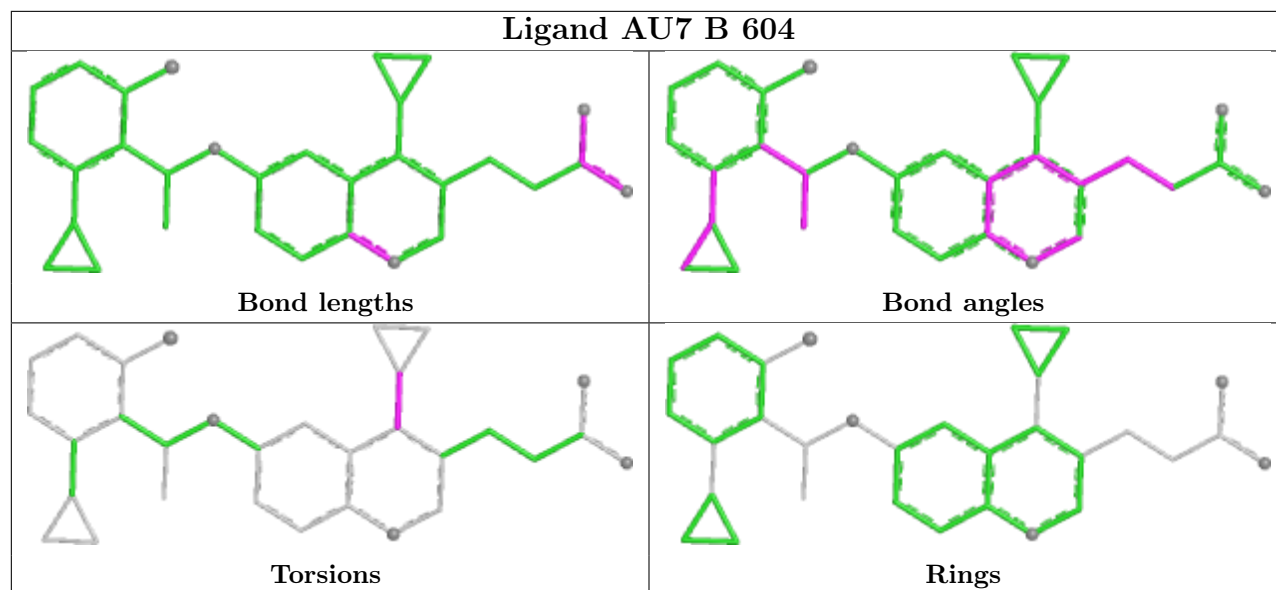
*Continued on next page...*

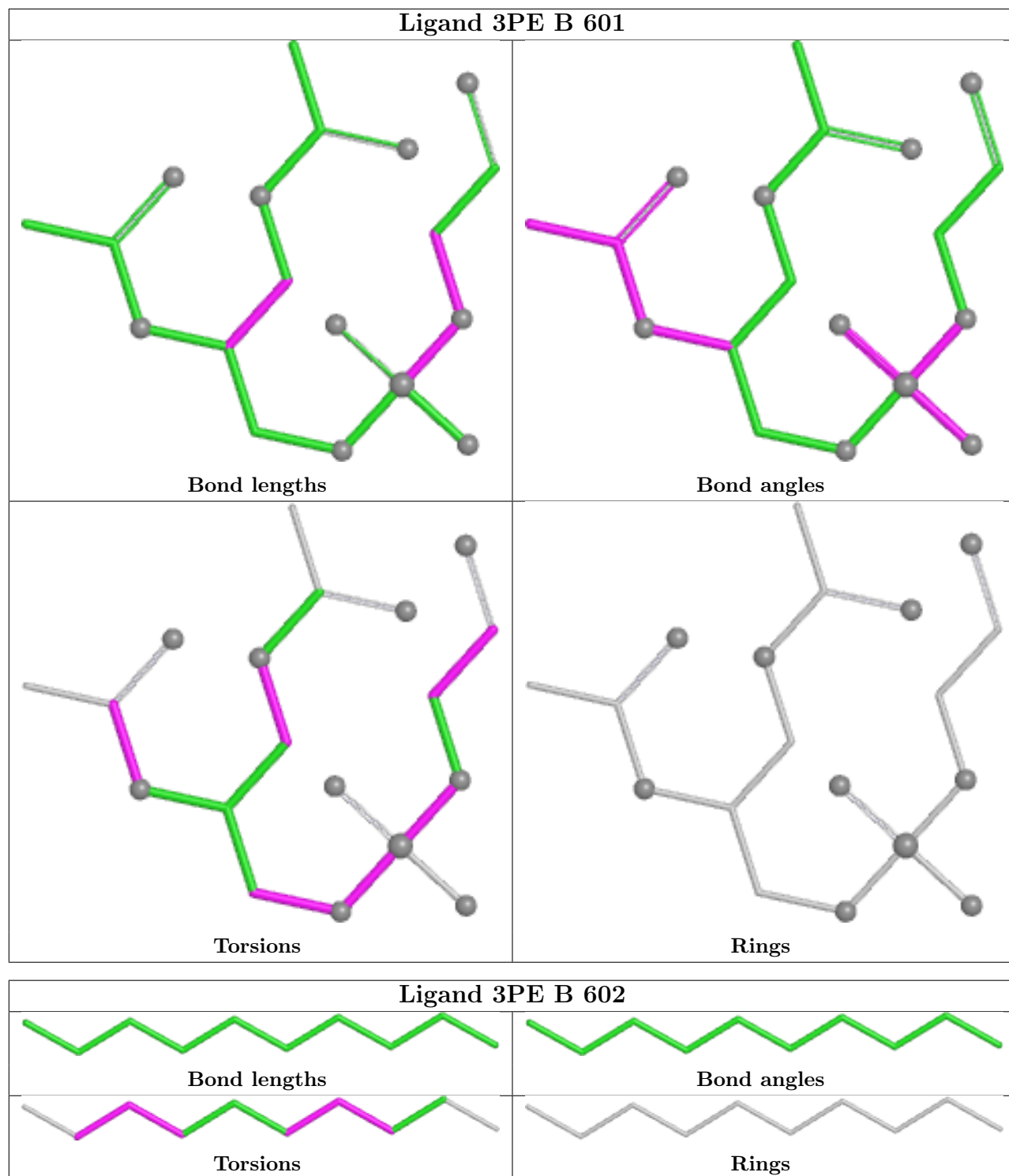
*Continued from previous page...*

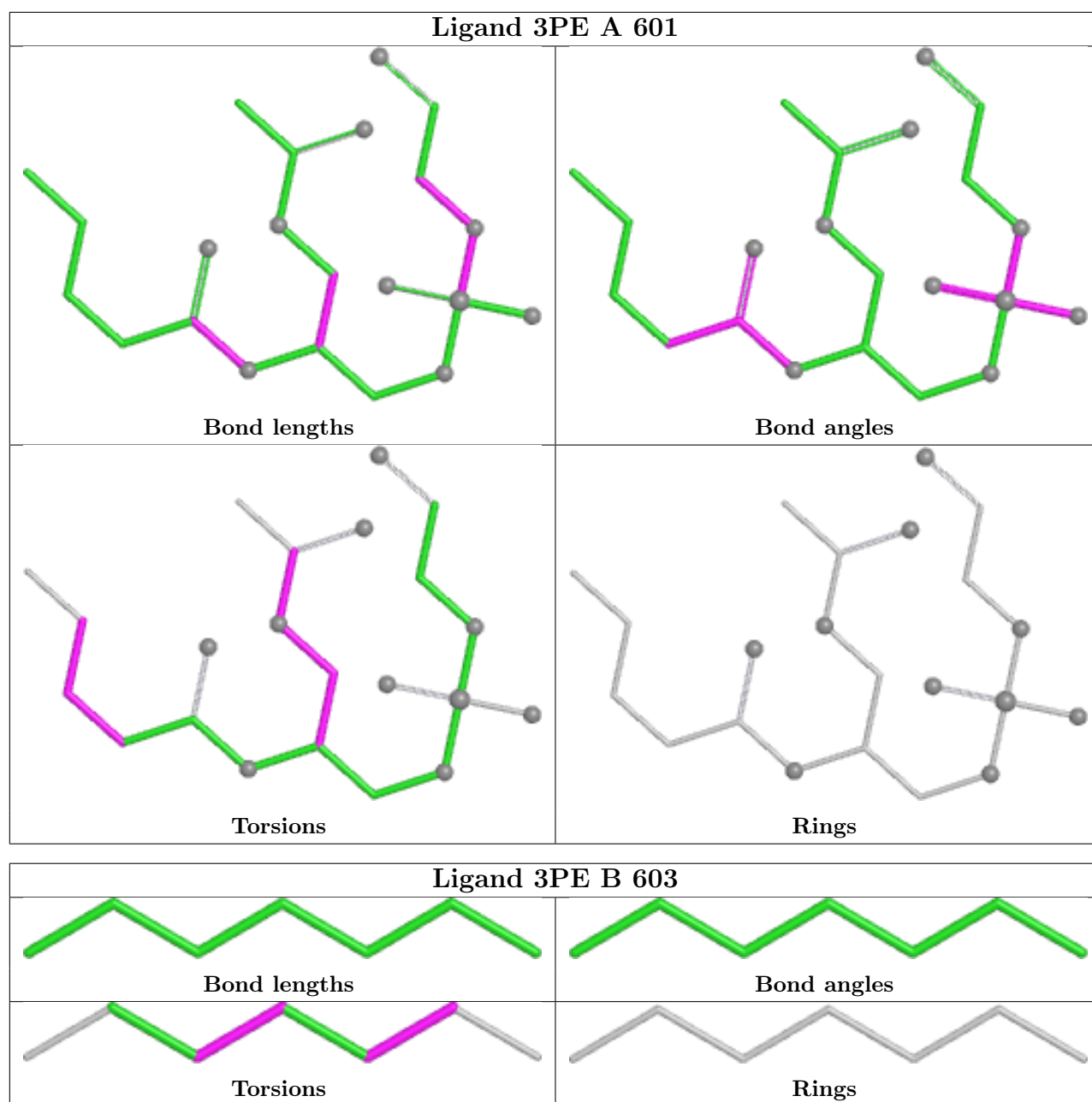
Mol	Chain	Res	Type	Clashes	Symm-Clashes
7	A	606	MYR	2	0
10	B	608	DAO	2	0
6	A	605	FTT	3	0
9	B	605	PA1	4	0

The following is a two-dimensional graphical depiction of Mogul quality analysis of bond lengths, bond angles, torsion angles, and ring geometry for all instances of the Ligand of Interest. In addition, ligands with molecular weight > 250 and outliers as shown on the validation Tables will also be included. For torsion angles, if less than 5% of the Mogul distribution of torsion angles is within 10 degrees of the torsion angle in question, then that torsion angle is considered an outlier. Any bond that is central to one or more torsion angles identified as an outlier by Mogul will be highlighted in the graph. For rings, the root-mean-square deviation (RMSD) between the ring in question and similar rings identified by Mogul is calculated over all ring torsion angles. If the average RMSD is greater than 60 degrees and the minimal RMSD between the ring in question and any Mogul-identified rings is also greater than 60 degrees, then that ring is considered an outlier. The outliers are highlighted in purple. The color gray indicates Mogul did not find sufficient equivalents in the CSD to analyse the geometry.









## 5.7 Other polymers [i](#)

There are no such residues in this entry.

## 5.8 Polymer linkage issues [i](#)

There are no chain breaks in this entry.

## 6 Fit of model and data [i](#)

### 6.1 Protein, DNA and RNA chains [i](#)

In the following table, the column labelled ‘#RSRZ > 2’ contains the number (and percentage) of RSRZ outliers, followed by percent RSRZ outliers for the chain as percentile scores relative to all X-ray entries and entries of similar resolution. The OWAB column contains the minimum, median, 95<sup>th</sup> percentile and maximum values of the occupancy-weighted average B-factor per residue. The column labelled ‘Q < 0.9’ lists the number of (and percentage) of residues with an average occupancy less than 0.9.

Mol	Chain	Analysed	<RSRZ>	#RSRZ>2	OWAB(Å <sup>2</sup> )	Q<0.9
1	A	576/582 (98%)	-0.05	10 (1%) 69 63	44, 68, 111, 135	0
1	B	565/582 (97%)	-0.01	12 (2%) 63 57	43, 77, 112, 147	0
All	All	1141/1164 (98%)	-0.03	22 (1%) 66 60	43, 72, 112, 147	0

The worst 5 of 22 RSRZ outliers are listed below:

Mol	Chain	Res	Type	RSRZ
1	B	575	LEU	4.6
1	B	474	ILE	4.3
1	B	480	LEU	3.8
1	A	128	ILE	3.7
1	B	478	GLY	3.2

### 6.2 Non-standard residues in protein, DNA, RNA chains [i](#)

There are no non-standard protein/DNA/RNA residues in this entry.

### 6.3 Carbohydrates [i](#)

In the following table, the Atoms column lists the number of modelled atoms in the group and the number defined in the chemical component dictionary. The B-factors column lists the minimum, median, 95<sup>th</sup> percentile and maximum values of B factors of atoms in the group. The column labelled ‘Q < 0.9’ lists the number of atoms with occupancy less than 0.9.

Mol	Type	Chain	Res	Atoms	RSCC	RSR	B-factors(Å <sup>2</sup> )	Q<0.9
2	GLC	C	2	11/12	0.03	0.14	161,168,179,181	0
2	GMH	C	1	13/14	0.54	0.13	142,149,165,172	0
3	GMH	D	4	13/14	0.58	0.09	135,149,158,166	0
2	GLC	C	3	11/12	0.60	0.10	154,165,169,171	0
2	GLC	C	4	11/12	0.63	0.09	155,164,179,182	0

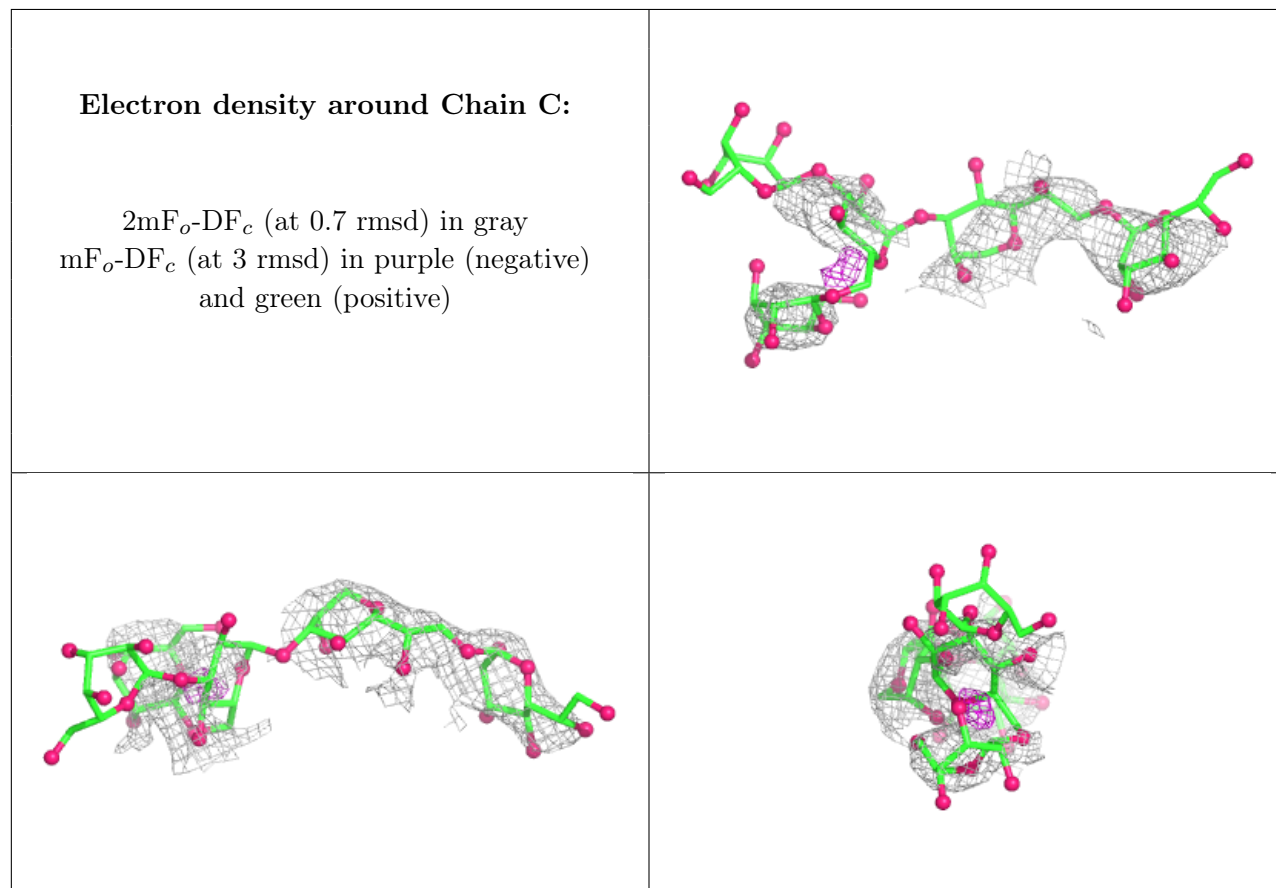
*Continued on next page...*

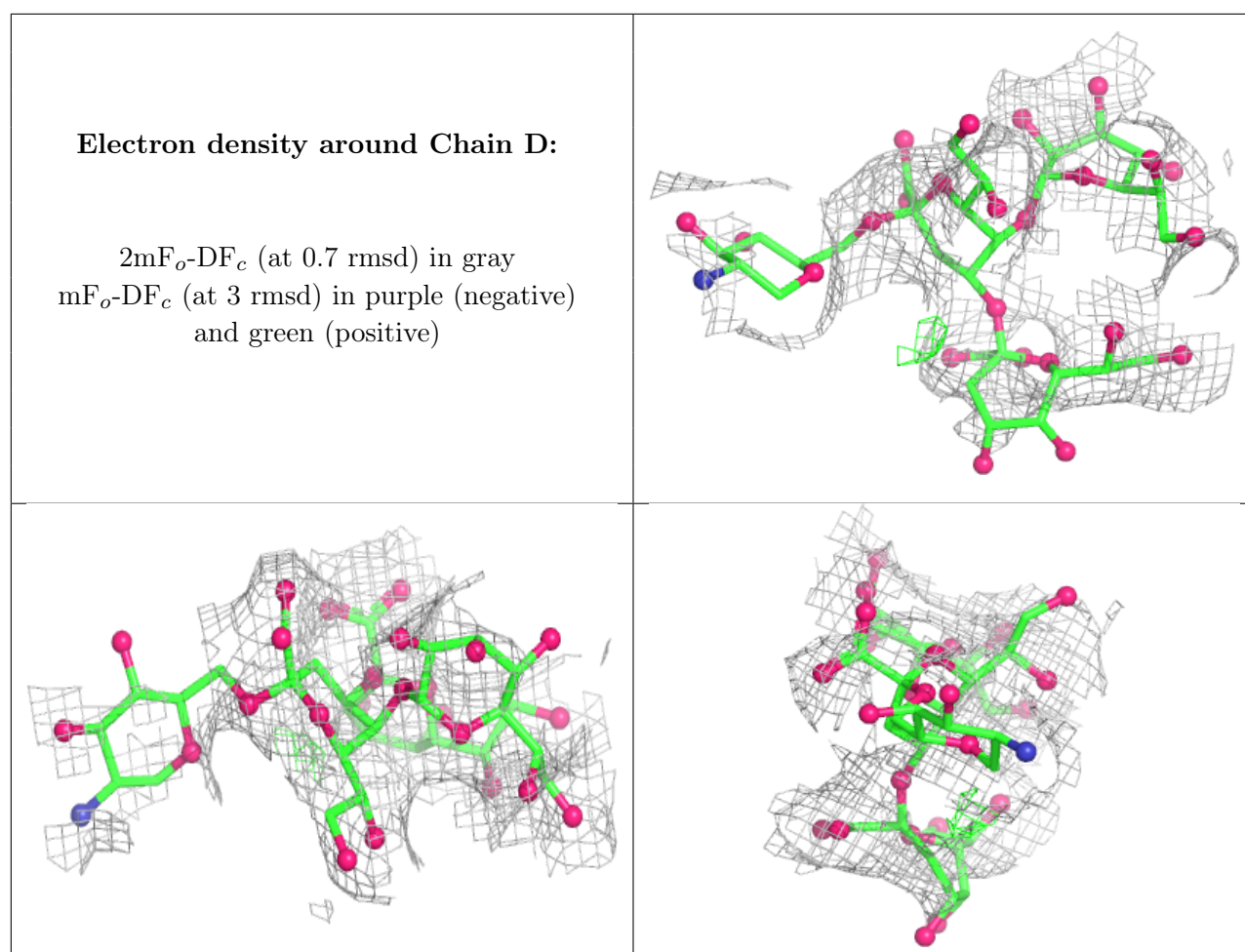


*Continued from previous page...*

Mol	Type	Chain	Res	Atoms	RSCC	RSR	B-factors( $\text{\AA}^2$ )	Q<0.9
3	KDO	D	3	15/16	0.65	0.15	109,129,142,145	0
3	KDO	D	2	15/16	0.72	0.10	125,139,147,149	0
2	GMH	C	5	13/14	0.73	0.09	103,138,146,148	0
3	GCS	D	1	11/12	0.84	0.07	111,118,132,134	0

The following is a graphical depiction of the model fit to experimental electron density for oligosaccharide. Each fit is shown from different orientation to approximate a three-dimensional view.





## 6.4 Ligands [i](#)

In the following table, the Atoms column lists the number of modelled atoms in the group and the number defined in the chemical component dictionary. The B-factors column lists the minimum, median, 95<sup>th</sup> percentile and maximum values of B factors of atoms in the group. The column labelled 'Q< 0.9' lists the number of atoms with occupancy less than 0.9.

Mol	Type	Chain	Res	Atoms	RSCC	RSR	B-factors( $\text{\AA}^2$ )	Q<0.9
11	DPO	B	609	8/9	0.58	0.07	159,167,171,177	0
4	3PE	B	601	19/51	0.72	0.13	85,101,109,119	0
4	3PE	B	603	7/51	0.73	0.31	59,80,85,85	0
4	3PE	A	601	22/51	0.76	0.13	63,94,107,190	0
9	PA1	B	605	12/12	0.82	0.08	103,114,123,131	0
8	PO4	B	606	4/5	0.86	0.06	81,85,116,118	0
6	FTT	A	605	16/17	0.87	0.18	65,94,110,125	0
4	3PE	B	602	10/51	0.87	0.21	58,80,89,94	0
6	FTT	A	604	16/17	0.88	0.17	79,96,114,122	0
6	FTT	A	603	16/17	0.89	0.18	68,88,106,108	0
10	DAO	B	608	13/14	0.91	0.17	62,81,90,96	0

*Continued on next page...*

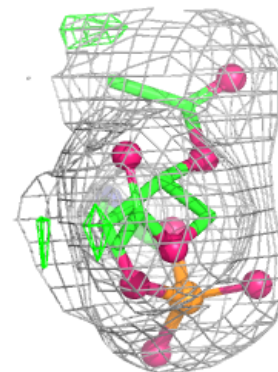
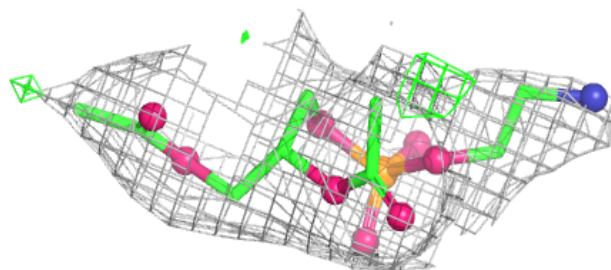
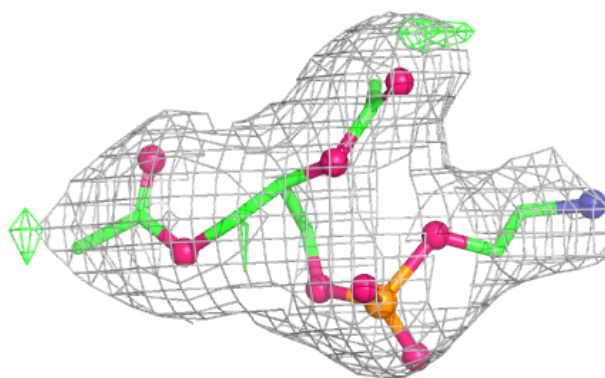
*Continued from previous page...*

Mol	Type	Chain	Res	Atoms	RSCC	RSR	B-factors( $\text{\AA}^2$ )	Q<0.9
7	MYR	A	606	15/16	0.92	0.16	65,75,95,101	0
8	PO4	A	607	4/5	0.92	0.05	85,90,96,112	0
6	FTT	B	607	16/17	0.92	0.15	69,94,113,114	0
5	AU7	A	602	31/31	0.93	0.08	43,54,67,70	0
5	AU7	B	604	31/31	0.93	0.08	50,69,81,82	0

The following is a graphical depiction of the model fit to experimental electron density of all instances of the Ligand of Interest. In addition, ligands with molecular weight > 250 and outliers as shown on the geometry validation Tables will also be included. Each fit is shown from different orientation to approximate a three-dimensional view.

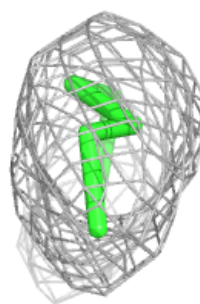
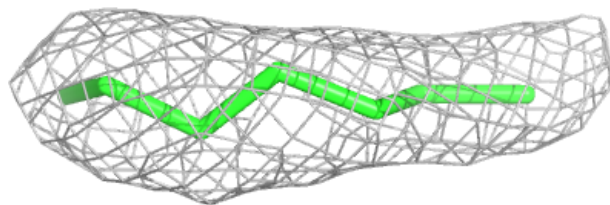
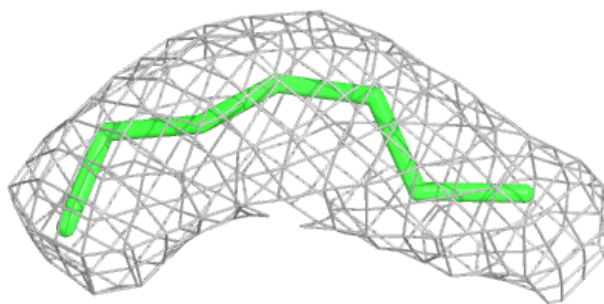
**Electron density around 3PE B 601:**

2mF<sub>o</sub>-DF<sub>c</sub> (at 0.7 rmsd) in gray  
mF<sub>o</sub>-DF<sub>c</sub> (at 3 rmsd) in purple (negative)  
and green (positive)



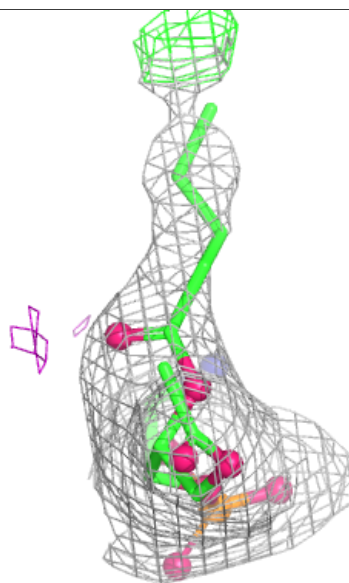
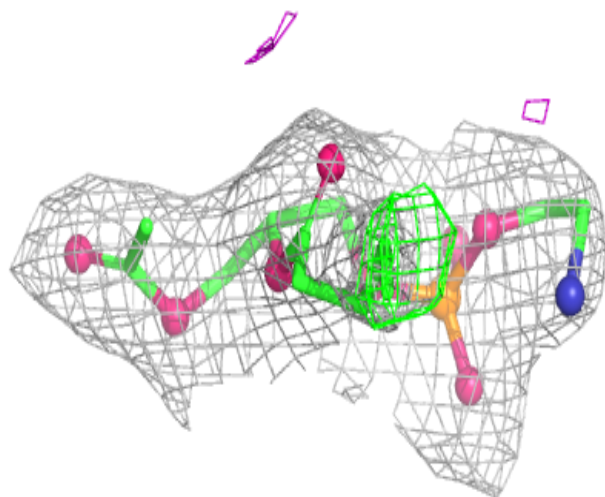
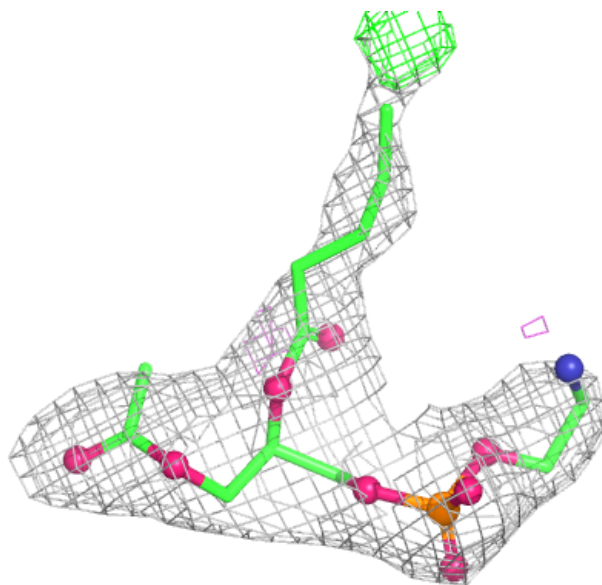
**Electron density around 3PE B 603:**

$2mF_o-DF_c$  (at 0.7 rmsd) in gray  
 $mF_o-DF_c$  (at 3 rmsd) in purple (negative)  
and green (positive)



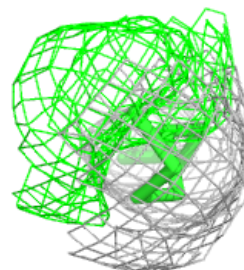
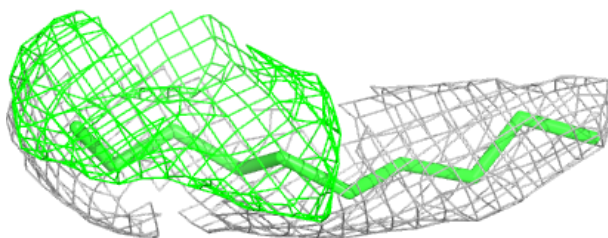
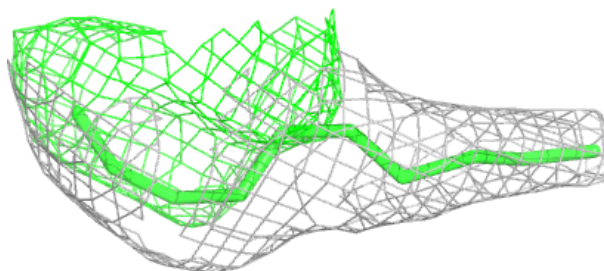
**Electron density around 3PE A 601:**

$2mF_o-DF_c$  (at 0.7 rmsd) in gray  
 $mF_o-DF_c$  (at 3 rmsd) in purple (negative)  
and green (positive)

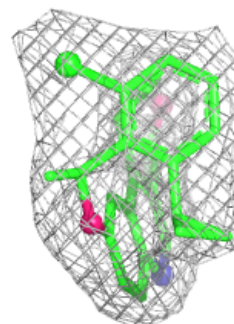
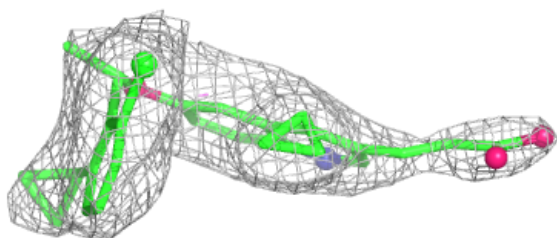
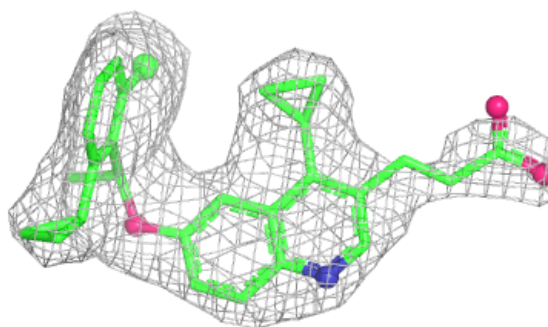


**Electron density around 3PE B 602:**

$2mF_o-DF_c$  (at 0.7 rmsd) in gray  
 $mF_o-DF_c$  (at 3 rmsd) in purple (negative)  
and green (positive)

**Electron density around AU7 A 602:**

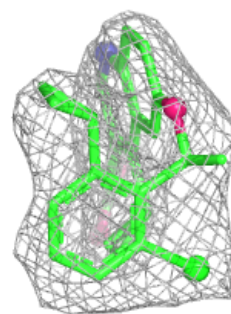
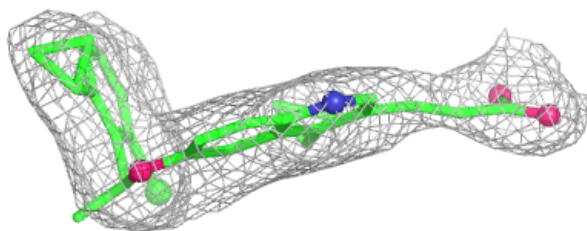
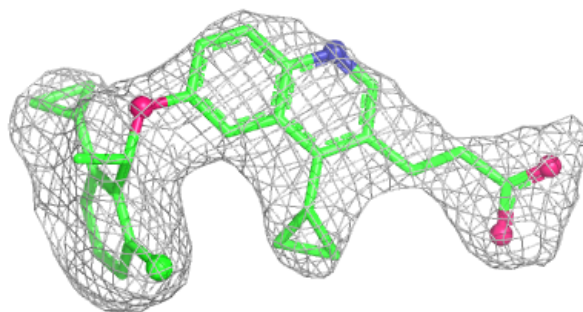
$2mF_o-DF_c$  (at 0.7 rmsd) in gray  
 $mF_o-DF_c$  (at 3 rmsd) in purple (negative)  
and green (positive)





**Electron density around AU7 B 604:**

$2mF_o-DF_c$  (at 0.7 rmsd) in gray  
 $mF_o-DF_c$  (at 3 rmsd) in purple (negative)  
and green (positive)



## 6.5 Other polymers [i](#)

There are no such residues in this entry.