



wwPDB X-ray Structure Validation Summary Report ⓘ

Jun 22, 2024 – 02:55 PM EDT

PDB ID : 5CE8
Title : Crystal structure of branched-chain aminotransferase from thermophilic archaea *Thermoproteus uzoniensis*
Authors : Boyko, K.M.; Nikolaeva, A.Y.; Stekhanova, T.N.; Mardanov, A.V.; Rakitin, A.L.; Ravin, N.V.; Popov, V.O.
Deposited on : 2015-07-06
Resolution : 2.00 Å(reported)

This is a wwPDB X-ray Structure Validation Summary Report for a publicly released PDB entry.

We welcome your comments at validation@mail.wwpdb.org

A user guide is available at

<https://www.wwpdb.org/validation/2017/XrayValidationReportHelp>

with specific help available everywhere you see the ⓘ symbol.

The types of validation reports are described at

<http://www.wwpdb.org/validation/2017/FAQs#types>.

The following versions of software and data (see [references ⓘ](#)) were used in the production of this report:

MolProbity	:	4.02b-467
Mogul	:	1.8.5 (274361), CSD as541be (2020)
Xtriage (Phenix)	:	1.13
EDS	:	2.37.1
Percentile statistics	:	20191225.v01 (using entries in the PDB archive December 25th 2019)
Refmac	:	5.8.0158
CCP4	:	7.0.044 (Gargrove)
Ideal geometry (proteins)	:	Engh & Huber (2001)
Ideal geometry (DNA, RNA)	:	Parkinson et al. (1996)
Validation Pipeline (wwPDB-VP)	:	2.37.1

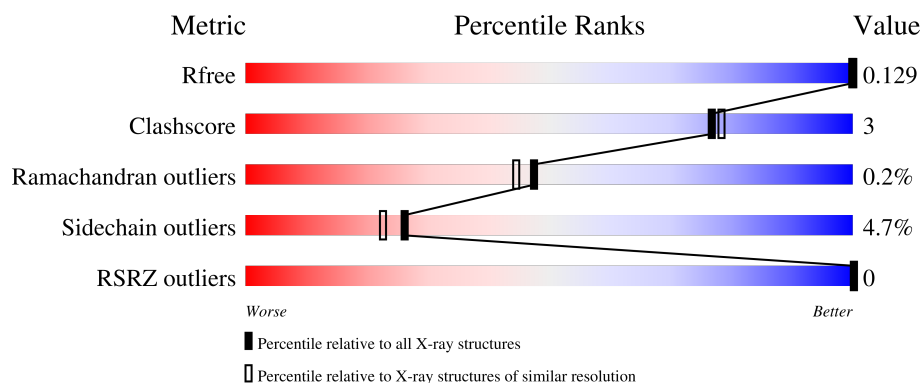
1 Overall quality at a glance

The following experimental techniques were used to determine the structure:

X-RAY DIFFRACTION




The reported resolution of this entry is 2.00 Å.

Percentile scores (ranging between 0-100) for global validation metrics of the entry are shown in the following graphic. The table shows the number of entries on which the scores are based.



Metric	Whole archive (#Entries)	Similar resolution (#Entries, resolution range(Å))
R_{free}	130704	8085 (2.00-2.00)
Clashscore	141614	9178 (2.00-2.00)
Ramachandran outliers	138981	9054 (2.00-2.00)
Sidechain outliers	138945	9053 (2.00-2.00)
RSRZ outliers	127900	7900 (2.00-2.00)

The table below summarises the geometric issues observed across the polymeric chains and their fit to the electron density. The red, orange, yellow and green segments of the lower bar indicate the fraction of residues that contain outliers for ≥ 3 , 2, 1 and 0 types of geometric quality criteria respectively. A grey segment represents the fraction of residues that are not modelled. The numeric value for each fraction is indicated below the corresponding segment, with a dot representing fractions $\leq 5\%$. The upper red bar (where present) indicates the fraction of residues that have poor fit to the electron density. The numeric value is given above the bar.

Mol	Chain	Length	Quality of chain
1	A	307	 81% 14% . .
1	B	307	 83% 10% . . .
1	C	307	 80% 14% . .

2 Entry composition

There are 4 unique types of molecules in this entry. The entry contains 7219 atoms, of which 0 are hydrogens and 0 are deuteriums.

In the tables below, the ZeroOcc column contains the number of atoms modelled with zero occupancy, the AltConf column contains the number of residues with at least one atom in alternate conformation and the Trace column contains the number of residues modelled with at most 2 atoms.

- Molecule 1 is a protein called Branched-chain amino acid aminotransferase.

Mol	Chain	Residues	Atoms					ZeroOcc	AltConf	Trace
1	A	296	Total	C	N	O	S	0	0	0
			2281	1468	382	423	8			
1	B	296	Total	C	N	O	S	0	0	0
			2278	1465	382	424	7			
1	C	295	Total	C	N	O	S	0	1	0
			2275	1467	385	415	8			

There are 36 discrepancies between the modelled and reference sequences:

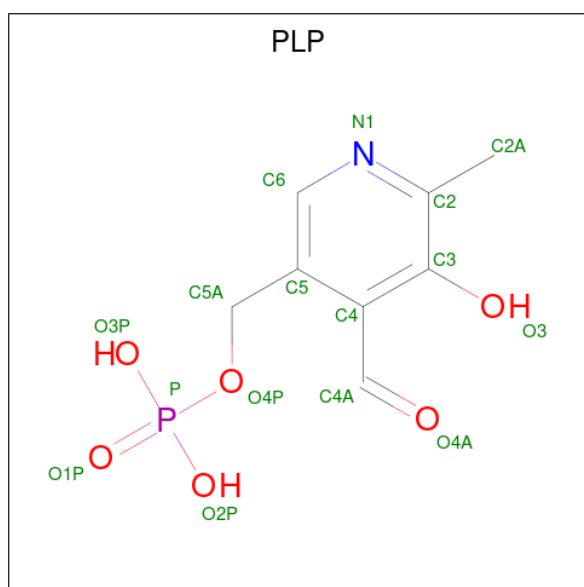
Chain	Residue	Modelled	Actual	Comment	Reference
A	-11	MET	-	initiating methionine	UNP F2L0W0
A	-10	ARG	-	expression tag	UNP F2L0W0
A	-9	GLY	-	expression tag	UNP F2L0W0
A	-8	SER	-	expression tag	UNP F2L0W0
A	-7	HIS	-	expression tag	UNP F2L0W0
A	-6	HIS	-	expression tag	UNP F2L0W0
A	-5	HIS	-	expression tag	UNP F2L0W0
A	-4	HIS	-	expression tag	UNP F2L0W0
A	-3	HIS	-	expression tag	UNP F2L0W0
A	-2	HIS	-	expression tag	UNP F2L0W0
A	-1	GLY	-	expression tag	UNP F2L0W0
A	0	SER	-	expression tag	UNP F2L0W0
B	-11	MET	-	initiating methionine	UNP F2L0W0
B	-10	ARG	-	expression tag	UNP F2L0W0
B	-9	GLY	-	expression tag	UNP F2L0W0
B	-8	SER	-	expression tag	UNP F2L0W0
B	-7	HIS	-	expression tag	UNP F2L0W0
B	-6	HIS	-	expression tag	UNP F2L0W0
B	-5	HIS	-	expression tag	UNP F2L0W0
B	-4	HIS	-	expression tag	UNP F2L0W0
B	-3	HIS	-	expression tag	UNP F2L0W0
B	-2	HIS	-	expression tag	UNP F2L0W0
B	-1	GLY	-	expression tag	UNP F2L0W0

Continued on next page...

Continued from previous page...

Chain	Residue	Modelled	Actual	Comment	Reference
B	0	SER	-	expression tag	UNP F2L0W0
C	-11	MET	-	initiating methionine	UNP F2L0W0
C	-10	ARG	-	expression tag	UNP F2L0W0
C	-9	GLY	-	expression tag	UNP F2L0W0
C	-8	SER	-	expression tag	UNP F2L0W0
C	-7	HIS	-	expression tag	UNP F2L0W0
C	-6	HIS	-	expression tag	UNP F2L0W0
C	-5	HIS	-	expression tag	UNP F2L0W0
C	-4	HIS	-	expression tag	UNP F2L0W0
C	-3	HIS	-	expression tag	UNP F2L0W0
C	-2	HIS	-	expression tag	UNP F2L0W0
C	-1	GLY	-	expression tag	UNP F2L0W0
C	0	SER	-	expression tag	UNP F2L0W0

- Molecule 2 is PYRIDOXAL-5'-PHOSPHATE (three-letter code: PLP) (formula: C₈H₁₀NO₆P).



Mol	Chain	Residues	Atoms					ZeroOcc	AltConf
2	A	1	Total	C	N	O	P	0	0
			15	8	1	5	1		
2	B	1	Total	C	N	O	P	0	0
			15	8	1	5	1		
2	C	1	Total	C	N	O	P	0	0
			15	8	1	5	1		

- Molecule 3 is DI(HYDROXYETHYL)ETHER (three-letter code: PEG) (formula: C₄H₁₀O₃).



Mol	Chain	Residues	Atoms			ZeroOcc	AltConf
3	C	1	Total	C	O	0	0
			7	4	3		

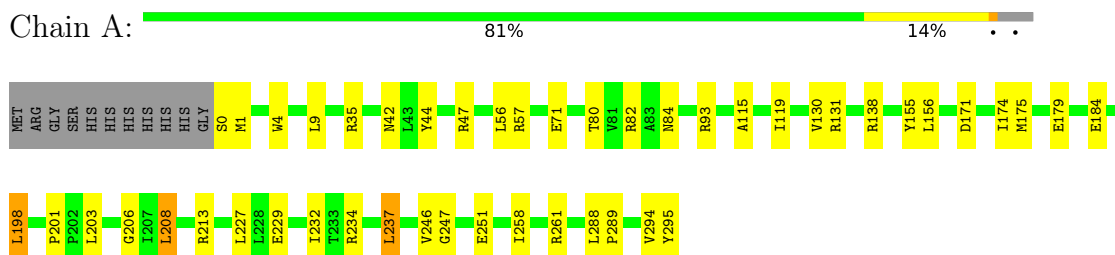
- Molecule 4 is water.

Mol	Chain	Residues	Atoms		ZeroOcc	AltConf
4	A	113	Total	O	0	0
			113	113		
4	B	104	Total	O	0	0
			104	104		
4	C	116	Total	O	0	0
			116	116		

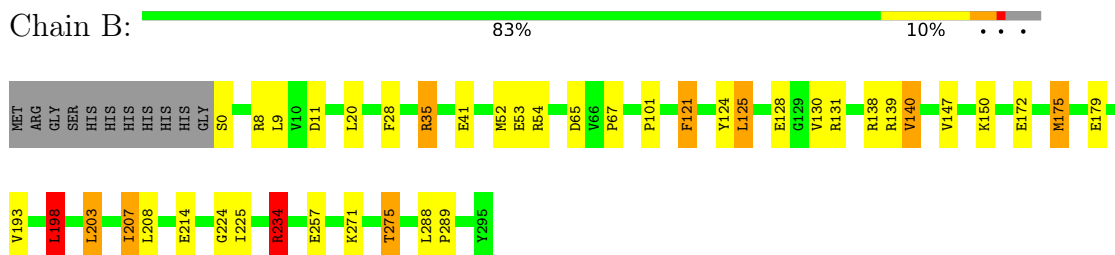
3 Residue-property plots

These plots are drawn for all protein, RNA, DNA and oligosaccharide chains in the entry. The first graphic for a chain summarises the proportions of the various outlier classes displayed in the second graphic. The second graphic shows the sequence view annotated by issues in geometry and electron density. Residues are color-coded according to the number of geometric quality criteria for which they contain at least one outlier: green = 0, yellow = 1, orange = 2 and red = 3 or more. A red dot above a residue indicates a poor fit to the electron density ($RSRZ > 2$). Stretches of 2 or more consecutive residues without any outlier are shown as a green connector. Residues present in the sample, but not in the model, are shown in grey.

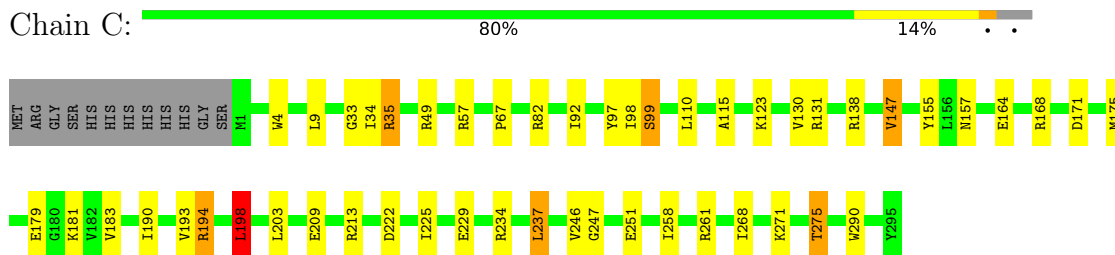
- Molecule 1: Branched-chain amino acid aminotransferase



- Molecule 1: Branched-chain amino acid aminotransferase



- Molecule 1: Branched-chain amino acid aminotransferase



4 Data and refinement statistics

Property	Value	Source
Space group	P 32 1 2	Depositor
Cell constants a, b, c, α , β , γ	93.54Å 93.54Å 212.51Å 90.00° 90.00° 120.00°	Depositor
Resolution (Å)	75.69 – 2.00 75.69 – 2.00	Depositor EDS
% Data completeness (in resolution range)	99.8 (75.69-2.00) 99.9 (75.69-2.00)	Depositor EDS
R_{merge}	0.12	Depositor
R_{sym}	(Not available)	Depositor
$\langle I/\sigma(I) \rangle$ ¹	2.45 (at 2.00Å)	Xtriage
Refinement program	REFMAC 5.8.0107	Depositor
R, R_{free}	0.120 , 0.168 0.128 , 0.129	Depositor DCC
R_{free} test set	3602 reflections (5.00%)	wwPDB-VP
Wilson B-factor (Å ²)	26.9	Xtriage
Anisotropy	0.123	Xtriage
Bulk solvent k_{sol} (e/Å ³), B_{sol} (Å ²)	0.30 , 19.7	EDS
L-test for twinning ²	$\langle L \rangle = 0.38$, $\langle L^2 \rangle = 0.20$	Xtriage
Estimated twinning fraction	0.460 for -h,-k,l	Xtriage
Reported twinning fraction	0.491 for H, K, L 0.509 for K, H, -L	Depositor
Outliers	0 of 72105 reflections	Xtriage
F_o, F_c correlation	0.97	EDS
Total number of atoms	7219	wwPDB-VP
Average B, all atoms (Å ²)	26.0	wwPDB-VP

Xtriage's analysis on translational NCS is as follows: *The largest off-origin peak in the Patterson function is 5.32% of the height of the origin peak. No significant pseudotranslation is detected.*

¹Intensities estimated from amplitudes.

²Theoretical values of $\langle |L| \rangle$, $\langle L^2 \rangle$ for acentric reflections are 0.5, 0.333 respectively for untwinned datasets, and 0.375, 0.2 for perfectly twinned datasets.

5 Model quality

5.1 Standard geometry

Bond lengths and bond angles in the following residue types are not validated in this section: PLP, PEG

The Z score for a bond length (or angle) is the number of standard deviations the observed value is removed from the expected value. A bond length (or angle) with $|Z| > 5$ is considered an outlier worth inspection. RMSZ is the root-mean-square of all Z scores of the bond lengths (or angles).

Mol	Chain	Bond lengths		Bond angles	
		RMSZ	$\# Z > 5$	RMSZ	$\# Z > 5$
1	A	1.27	4/2324 (0.2%)	1.33	21/3158 (0.7%)
1	B	1.28	5/2320 (0.2%)	1.25	14/3151 (0.4%)
1	C	1.26	9/2323 (0.4%)	1.35	24/3156 (0.8%)
All	All	1.27	18/6967 (0.3%)	1.31	59/9465 (0.6%)

Chiral center outliers are detected by calculating the chiral volume of a chiral center and verifying if the center is modelled as a planar moiety or with the opposite hand. A planarity outlier is detected by checking planarity of atoms in a peptide group, atoms in a mainchain group or atoms of a sidechain that are expected to be planar.

Mol	Chain	#Chirality outliers	#Planarity outliers
1	B	0	2

The worst 5 of 18 bond length outliers are listed below:

Mol	Chain	Res	Type	Atoms	Z	Observed(Å)	Ideal(Å)
1	B	172	GLU	CD-OE2	7.01	1.33	1.25
1	A	179	GLU	CD-OE2	6.49	1.32	1.25
1	A	206	GLY	C-O	-6.45	1.13	1.23
1	C	290	TRP	CB-CG	-6.43	1.38	1.50
1	B	28	PHE	C-O	6.43	1.35	1.23

The worst 5 of 59 bond angle outliers are listed below:

Mol	Chain	Res	Type	Atoms	Z	Observed(°)	Ideal(°)
1	A	234	ARG	NE-CZ-NH2	-22.68	108.96	120.30
1	C	234	ARG	NE-CZ-NH2	-19.43	110.58	120.30
1	B	234	ARG	NE-CZ-NH2	-16.50	112.05	120.30
1	B	234	ARG	NE-CZ-NH1	13.01	126.81	120.30
1	C	234	ARG	NE-CZ-NH1	11.46	126.03	120.30

There are no chirality outliers.

All (2) planarity outliers are listed below:

Mol	Chain	Res	Type	Group
1	B	121	PHE	Peptide
1	B	207	ILE	Peptide

5.2 Too-close contacts ⓘ

In the following table, the Non-H and H(model) columns list the number of non-hydrogen atoms and hydrogen atoms in the chain respectively. The H(added) column lists the number of hydrogen atoms added and optimized by MolProbity. The Clashes column lists the number of clashes within the asymmetric unit, whereas Symm-Clashes lists symmetry-related clashes.

Mol	Chain	Non-H	H(model)	H(added)	Clashes	Symm-Clashes
1	A	2281	0	2299	15	0
1	B	2278	0	2296	14	0
1	C	2275	0	2300	13	0
2	A	15	0	7	2	0
2	B	15	0	7	1	0
2	C	15	0	7	0	0
3	C	7	0	10	0	0
4	A	113	0	0	0	0
4	B	104	0	0	1	0
4	C	116	0	0	3	0
All	All	7219	0	6926	42	0

The all-atom clashscore is defined as the number of clashes found per 1000 atoms (including hydrogen atoms). The all-atom clashscore for this structure is 3.

The worst 5 of 42 close contacts within the same asymmetric unit are listed below, sorted by their clash magnitude.

Atom-1	Atom-2	Interatomic distance (Å)	Clash overlap (Å)
1:A:4:TRP:O	1:A:115:ALA:HA	1.99	0.63
1:B:203:LEU:HD12	1:B:207:ILE:HD11	1.82	0.60
1:C:99:SER:HB2	4:C:445:HOH:O	2.05	0.57
1:A:155:TYR:HE2	2:A:301:PLP:HO3	1.57	0.51
1:B:234:ARG:HD2	4:C:479:HOH:O	2.09	0.51

There are no symmetry-related clashes.

5.3 Torsion angles [i](#)

5.3.1 Protein backbone [i](#)

In the following table, the Percentiles column shows the percent Ramachandran outliers of the chain as a percentile score with respect to all X-ray entries followed by that with respect to entries of similar resolution.

The Analysed column shows the number of residues for which the backbone conformation was analysed, and the total number of residues.

Mol	Chain	Analysed	Favoured	Allowed	Outliers	Percentiles	
1	A	294/307 (96%)	287 (98%)	7 (2%)	0	100	100
1	B	294/307 (96%)	281 (96%)	11 (4%)	2 (1%)	22	16
1	C	294/307 (96%)	282 (96%)	12 (4%)	0	100	100
All	All	882/921 (96%)	850 (96%)	30 (3%)	2 (0%)	47	44

All (2) Ramachandran outliers are listed below:

Mol	Chain	Res	Type
1	B	121	PHE
1	B	67	PRO

5.3.2 Protein sidechains [i](#)

In the following table, the Percentiles column shows the percent sidechain outliers of the chain as a percentile score with respect to all X-ray entries followed by that with respect to entries of similar resolution.

The Analysed column shows the number of residues for which the sidechain conformation was analysed, and the total number of residues.

Mol	Chain	Analysed	Rotameric	Outliers	Percentiles	
1	A	233/253 (92%)	226 (97%)	7 (3%)	41	41
1	B	233/253 (92%)	221 (95%)	12 (5%)	23	19
1	C	231/253 (91%)	217 (94%)	14 (6%)	18	14
All	All	697/759 (92%)	664 (95%)	33 (5%)	26	22

5 of 33 residues with a non-rotameric sidechain are listed below:

Mol	Chain	Res	Type
1	C	194	ARG

Continued on next page...

Continued from previous page...

Mol	Chain	Res	Type
1	C	198	LEU
1	C	275	THR
1	B	125	LEU
1	B	53	GLU

Sometimes sidechains can be flipped to improve hydrogen bonding and reduce clashes. There are no such sidechains identified.

5.3.3 RNA [i](#)

There are no RNA molecules in this entry.

5.4 Non-standard residues in protein, DNA, RNA chains [i](#)

There are no non-standard protein/DNA/RNA residues in this entry.

5.5 Carbohydrates [i](#)

There are no monosaccharides in this entry.

5.6 Ligand geometry [i](#)

4 ligands are modelled in this entry.

In the following table, the Counts columns list the number of bonds (or angles) for which Mogul statistics could be retrieved, the number of bonds (or angles) that are observed in the model and the number of bonds (or angles) that are defined in the Chemical Component Dictionary. The Link column lists molecule types, if any, to which the group is linked. The Z score for a bond length (or angle) is the number of standard deviations the observed value is removed from the expected value. A bond length (or angle) with $|Z| > 2$ is considered an outlier worth inspection. RMSZ is the root-mean-square of all Z scores of the bond lengths (or angles).

Mol	Type	Chain	Res	Link	Bond lengths			Bond angles		
					Counts	RMSZ	$\# Z > 2$	Counts	RMSZ	$\# Z > 2$
2	PLP	A	301	1	15,15,16	3.01	5 (33%)	20,22,23	1.52	3 (15%)
2	PLP	C	302	1	15,15,16	3.08	4 (26%)	20,22,23	2.15	8 (40%)
3	PEG	C	301	-	6,6,6	0.33	0	5,5,5	0.99	0
2	PLP	B	301	1	15,15,16	2.72	4 (26%)	20,22,23	1.73	4 (20%)

In the following table, the Chirals column lists the number of chiral outliers, the number of chiral

centers analysed, the number of these observed in the model and the number defined in the Chemical Component Dictionary. Similar counts are reported in the Torsion and Rings columns. '-' means no outliers of that kind were identified.

Mol	Type	Chain	Res	Link	Chirals	Torsions	Rings
2	PLP	A	301	1	-	0/6/6/8	0/1/1/1
2	PLP	C	302	1	-	0/6/6/8	0/1/1/1
3	PEG	C	301	-	-	4/4/4/4	-
2	PLP	B	301	1	-	0/6/6/8	0/1/1/1

The worst 5 of 13 bond length outliers are listed below:

Mol	Chain	Res	Type	Atoms	Z	Observed(Å)	Ideal(Å)
2	A	301	PLP	C5-C4	8.15	1.49	1.40
2	B	301	PLP	C3-C2	7.58	1.48	1.40
2	C	302	PLP	C5-C4	7.57	1.48	1.40
2	C	302	PLP	C3-C2	7.16	1.48	1.40
2	A	301	PLP	C3-C2	5.17	1.46	1.40

The worst 5 of 15 bond angle outliers are listed below:

Mol	Chain	Res	Type	Atoms	Z	Observed(°)	Ideal(°)
2	C	302	PLP	C6-N1-C2	4.14	126.83	119.17
2	B	301	PLP	O3P-P-O4P	-3.98	96.15	106.73
2	C	302	PLP	C2A-C2-N1	3.62	124.73	117.67
2	C	302	PLP	O4P-C5A-C5	3.45	115.93	109.35
2	B	301	PLP	O3-C3-C2	3.36	124.81	117.49

There are no chirality outliers.

All (4) torsion outliers are listed below:

Mol	Chain	Res	Type	Atoms
3	C	301	PEG	O1-C1-C2-O2
3	C	301	PEG	C1-C2-O2-C3
3	C	301	PEG	O2-C3-C4-O4
3	C	301	PEG	C4-C3-O2-C2

There are no ring outliers.

2 monomers are involved in 3 short contacts:

Mol	Chain	Res	Type	Clashes	Symm-Clashes
2	A	301	PLP	2	0
2	B	301	PLP	1	0

5.7 Other polymers [i](#)

There are no such residues in this entry.

5.8 Polymer linkage issues [i](#)

There are no chain breaks in this entry.

6 Fit of model and data [i](#)

6.1 Protein, DNA and RNA chains [i](#)

In the following table, the column labelled ‘#RSRZ> 2’ contains the number (and percentage) of RSRZ outliers, followed by percent RSRZ outliers for the chain as percentile scores relative to all X-ray entries and entries of similar resolution. The OWAB column contains the minimum, median, 95th percentile and maximum values of the occupancy-weighted average B-factor per residue. The column labelled ‘Q< 0.9’ lists the number of (and percentage) of residues with an average occupancy less than 0.9.

Mol	Chain	Analysed	<RSRZ>	#RSRZ>2	OWAB(Å ²)	Q<0.9
1	A	296/307 (96%)	-1.11	0 100 100	16, 24, 39, 47	0
1	B	296/307 (96%)	-1.06	0 100 100	16, 25, 40, 62	0
1	C	295/307 (96%)	-1.08	0 100 100	17, 26, 40, 51	0
All	All	887/921 (96%)	-1.08	0 100 100	16, 25, 40, 62	0

There are no RSRZ outliers to report.

6.2 Non-standard residues in protein, DNA, RNA chains [i](#)

There are no non-standard protein/DNA/RNA residues in this entry.

6.3 Carbohydrates [i](#)

There are no monosaccharides in this entry.

6.4 Ligands [i](#)

In the following table, the Atoms column lists the number of modelled atoms in the group and the number defined in the chemical component dictionary. The B-factors column lists the minimum, median, 95th percentile and maximum values of B factors of atoms in the group. The column labelled ‘Q< 0.9’ lists the number of atoms with occupancy less than 0.9.

Mol	Type	Chain	Res	Atoms	RSCC	RSR	B-factors(Å ²)	Q<0.9
3	PEG	C	301	7/7	0.90	0.17	20,21,26,32	7
2	PLP	B	301	15/16	0.99	0.06	20,23,27,27	0
2	PLP	C	302	15/16	0.99	0.07	20,22,25,26	0
2	PLP	A	301	15/16	0.99	0.07	18,23,24,24	0

6.5 Other polymers [i](#)

There are no such residues in this entry.