



Full wwPDB EM Validation Report ⓘ

May 17, 2025 – 08:06 AM EDT

PDB ID : 6CES / pdb_00006ces
EMDB ID : EMD-7464
Title : Cryo-EM structure of GATOR1-RAG
Authors : Shen, K.; Huang, R.K.; Brignole, E.J.; Yu, Z.; Sabatini, D.M.
Deposited on : 2018-02-12
Resolution : 4.00 Å(reported)

This is a Full wwPDB EM Validation Report for a publicly released PDB entry.

We welcome your comments at validation@mail.wwpdb.org

A user guide is available at

<https://www.wwpdb.org/validation/2017/EMValidationReportHelp>

with specific help available everywhere you see the ⓘ symbol.

The types of validation reports are described at

<http://www.wwpdb.org/validation/2017/FAQs#types>.

The following versions of software and data (see [references ⓘ](#)) were used in the production of this report:

EMDB validation analysis : 0.0.1.dev118
Mogul : 2022.3.0, CSD as543be (2022)
MolProbity : 4-5-2 with Phenix2.0rc1
buster-report : 1.1.7 (2018)
Percentile statistics : 20231227.v01 (using entries in the PDB archive December 27th 2023)
MapQ : 1.9.13
Ideal geometry (proteins) : Engh & Huber (2001)
Ideal geometry (DNA, RNA) : Parkinson et al. (1996)
Validation Pipeline (wwPDB-VP) : 2.43.1

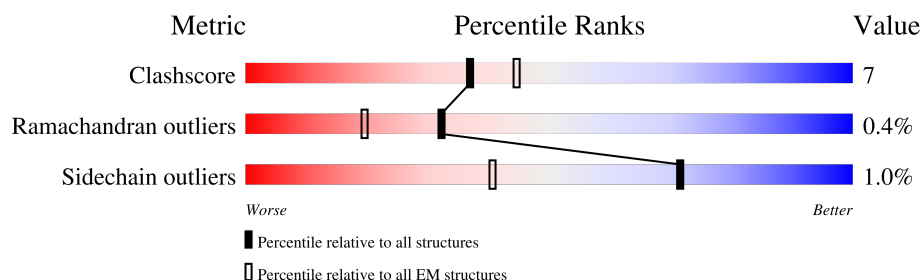
1 Overall quality at a glance

The following experimental techniques were used to determine the structure:

ELECTRON MICROSCOPY

The reported resolution of this entry is 4.00 Å.

Percentile scores (ranging between 0-100) for global validation metrics of the entry are shown in the following graphic. The table shows the number of entries on which the scores are based.



Metric	Whole archive (#Entries)	EM structures (#Entries)
Clashscore	210492	15764
Ramachandran outliers	207382	16835
Sidechain outliers	206894	16415

The table below summarises the geometric issues observed across the polymeric chains and their fit to the map. The red, orange, yellow and green segments of the bar indicate the fraction of residues that contain outliers for ≥ 3 , 2, 1 and 0 types of geometric quality criteria respectively. A grey segment represents the fraction of residues that are not modelled. The numeric value for each fraction is indicated below the corresponding segment, with a dot representing fractions $\leq 5\%$. The upper red bar (where present) indicates the fraction of residues that have poor fit to the EM map (all-atom inclusion $< 40\%$). The numeric value is given above the bar.

Mol	Chain	Length	Quality of chain
1	N	380	
2	M	569	
3	D	1603	
4	A	313	
5	C	399	

2 Entry composition

There are 6 unique types of molecules in this entry. The entry contains 18988 atoms, of which 0 are hydrogens and 0 are deuteriums.

In the tables below, the AltConf column contains the number of residues with at least one atom in alternate conformation and the Trace column contains the number of residues modelled with at most 2 atoms.

- Molecule 1 is a protein called GATOR complex protein NPRL2.

Mol	Chain	Residues	Atoms					AltConf	Trace
1	N	321	Total	C	N	O	S	0	0
			2579	1655	422	484	18		

- Molecule 2 is a protein called GATOR complex protein NPRL3.

Mol	Chain	Residues	Atoms					AltConf	Trace
2	M	519	Total	C	N	O	S	0	0
			4084	2583	721	759	21		

- Molecule 3 is a protein called GATOR complex protein DEPDC5.

Mol	Chain	Residues	Atoms					AltConf	Trace
3	D	901	Total	C	N	O	S	0	0
			7349	4737	1228	1344	40		

- Molecule 4 is a protein called Ras-related GTP-binding protein A.

Mol	Chain	Residues	Atoms					AltConf	Trace
4	A	300	Total	C	N	O	S	0	0
			2459	1561	428	452	18		

- Molecule 5 is a protein called Ras-related GTP-binding protein C.

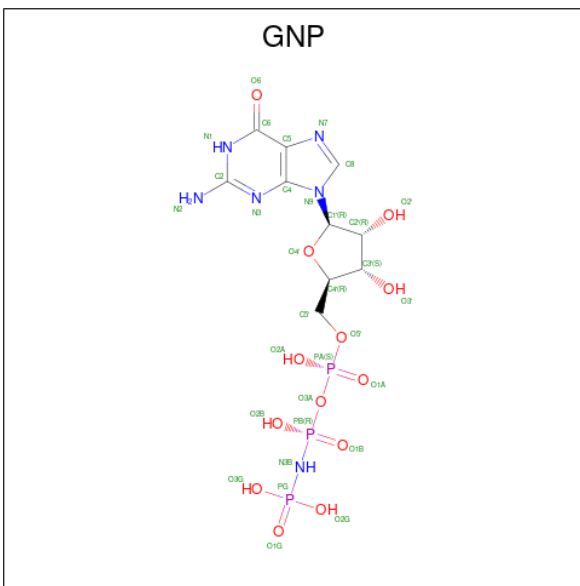
Mol	Chain	Residues	Atoms					AltConf	Trace
5	C	307	Total	C	N	O	S	0	0
			2485	1601	400	470	14		

There is a discrepancy between the modelled and reference sequences:

Chain	Residue	Modelled	Actual	Comment	Reference
C	75	ASN	SER	engineered mutation	UNP Q9HB90

- Molecule 6 is PHOSPHOAMINOPHOSPHONIC ACID-GUANYLATE ESTER (CCD ID:

GNP) (formula: $\text{C}_{10}\text{H}_{17}\text{N}_6\text{O}_{13}\text{P}_3$).

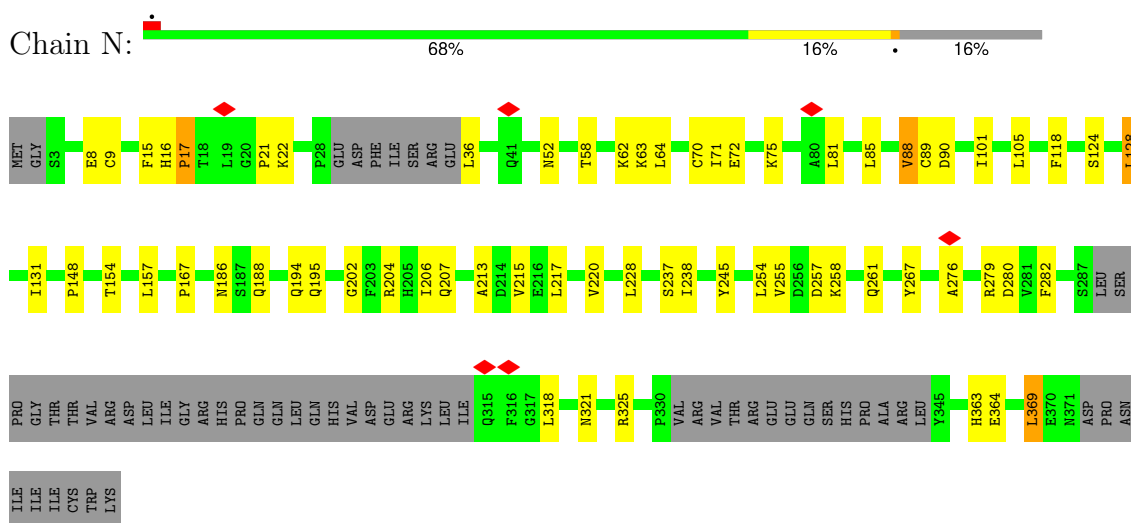


Mol	Chain	Residues	Atoms					AltConf
6	A	1	Total 32	C 10	N 6	O 13	P 3	0

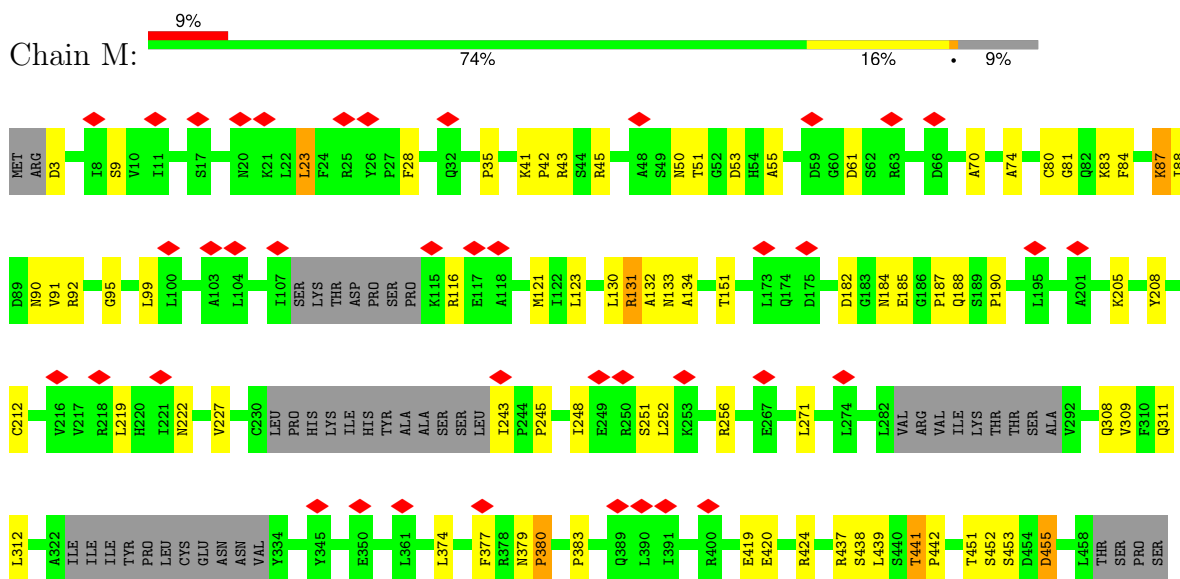
3 Residue-property plots

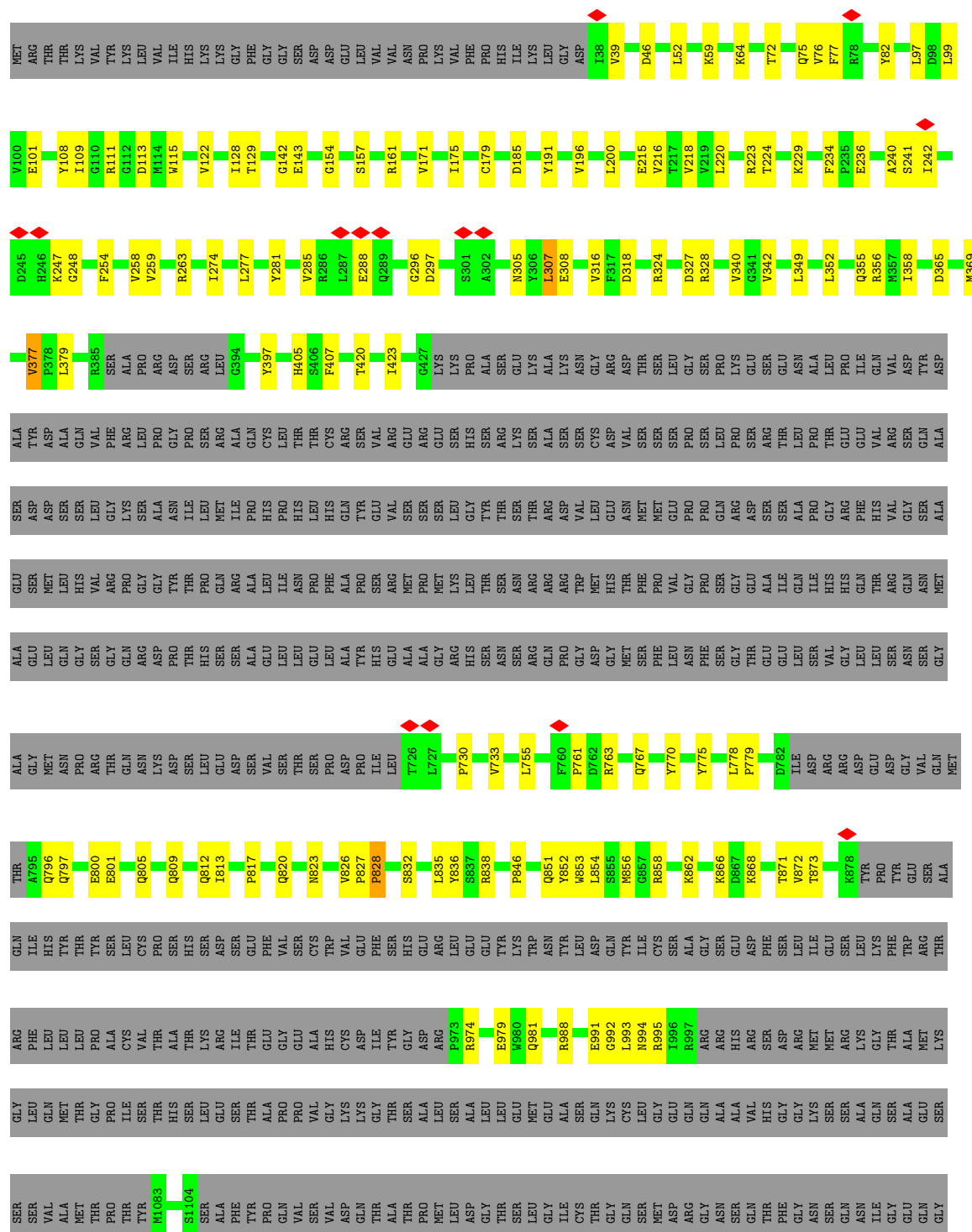
These plots are drawn for all protein, RNA, DNA and oligosaccharide chains in the entry. The first graphic for a chain summarises the proportions of the various outlier classes displayed in the second graphic. The second graphic shows the sequence view annotated by issues in geometry and atom inclusion in map density. Residues are color-coded according to the number of geometric quality criteria for which they contain at least one outlier: green = 0, yellow = 1, orange = 2 and red = 3 or more. A red diamond above a residue indicates a poor fit to the EM map for this residue (all-atom inclusion < 40%). Stretches of 2 or more consecutive residues without any outlier are shown as a green connector. Residues present in the sample, but not in the model, are shown in grey.

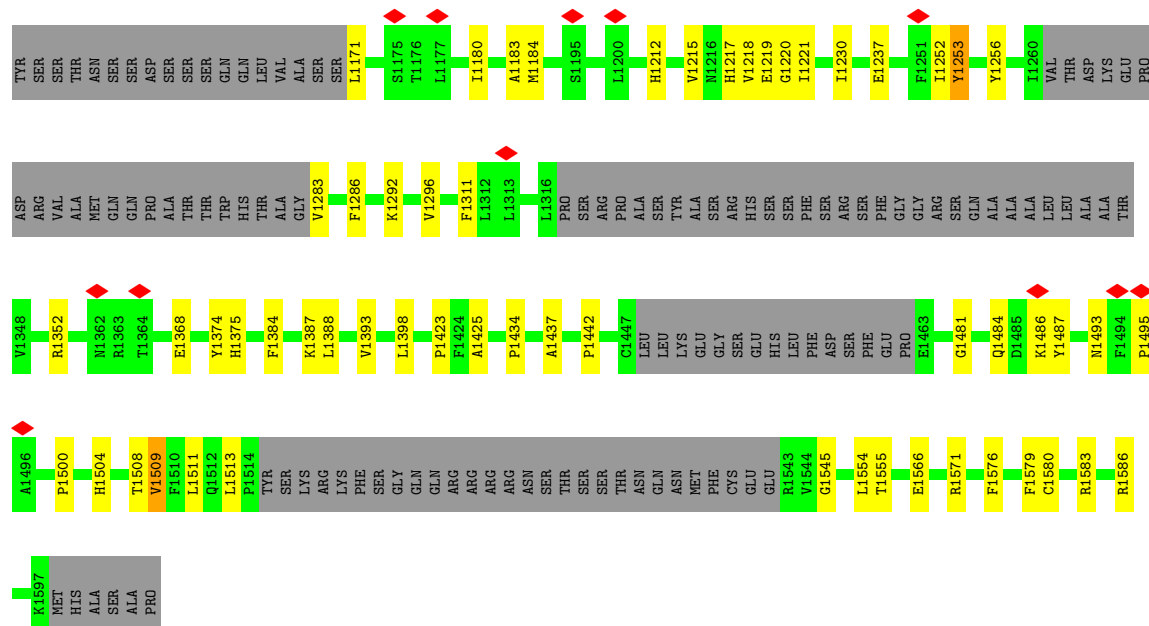
- Molecule 1: GATOR complex protein NPRL2



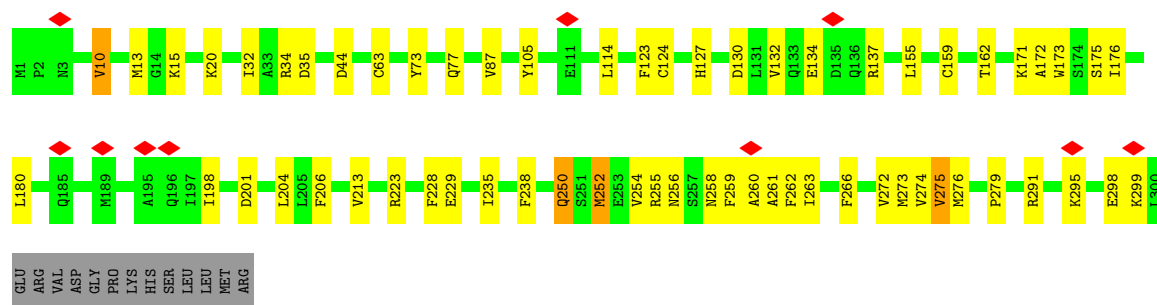
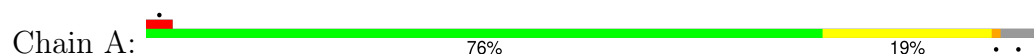
- Molecule 2: GATOR complex protein NPRL3



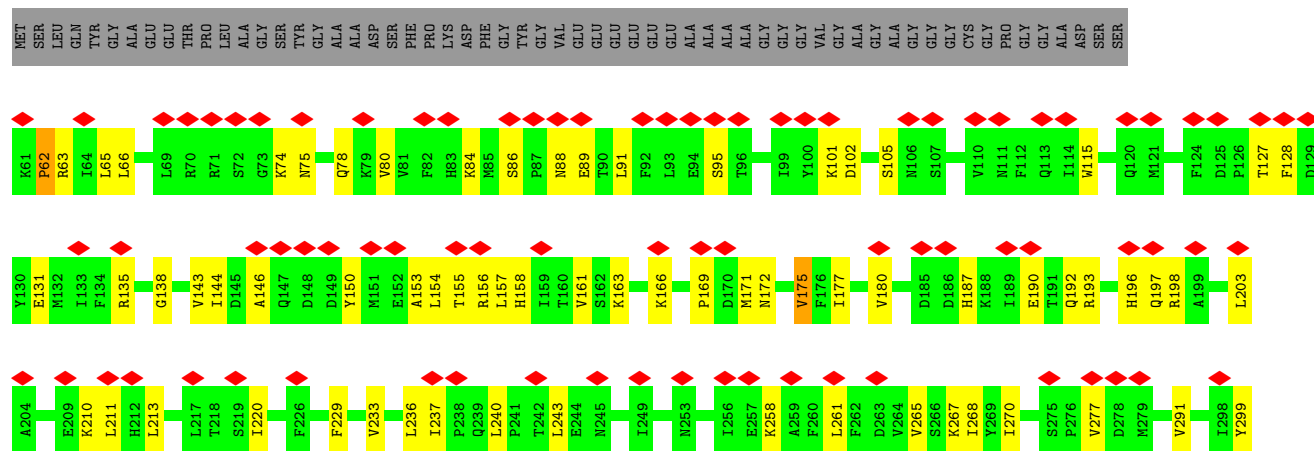


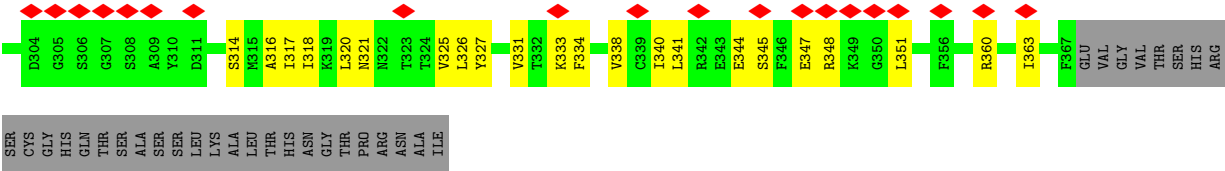


• Molecule 4: Ras-related GTP-binding protein A



• Molecule 5: Ras-related GTP-binding protein C





4 Experimental information

Property	Value	Source
EM reconstruction method	SINGLE PARTICLE	Depositor
Imposed symmetry	POINT, Not provided	
Number of particles used	128533	Depositor
Resolution determination method	FSC 0.143 CUT-OFF	Depositor
CTF correction method	PHASE FLIPPING AND AMPLITUDE CORRECTION	Depositor
Microscope	FEI TITAN KRIOS	Depositor
Voltage (kV)	300	Depositor
Electron dose ($e^-/\text{\AA}^2$)	55	Depositor
Minimum defocus (nm)	Not provided	
Maximum defocus (nm)	Not provided	
Magnification	Not provided	
Image detector	GATAN K2 QUANTUM (4k x 4k)	Depositor
Maximum map value	0.248	Depositor
Minimum map value	-0.158	Depositor
Average map value	0.001	Depositor
Map value standard deviation	0.008	Depositor
Recommended contour level	0.043	Depositor
Map size (Å)	270.0, 270.0, 270.0	wwPDB
Map dimensions	200, 200, 200	wwPDB
Map angles (°)	90.0, 90.0, 90.0	wwPDB
Pixel spacing (Å)	1.35, 1.35, 1.35	Depositor

5 Model quality

5.1 Standard geometry

Bond lengths and bond angles in the following residue types are not validated in this section: GNP

The Z score for a bond length (or angle) is the number of standard deviations the observed value is removed from the expected value. A bond length (or angle) with $|Z| > 5$ is considered an outlier worth inspection. RMSZ is the root-mean-square of all Z scores of the bond lengths (or angles).

Mol	Chain	Bond lengths		Bond angles	
		RMSZ	$\# Z > 5$	RMSZ	$\# Z > 5$
1	N	0.32	0/2629	0.72	2/3559 (0.1%)
2	M	0.30	0/4169	0.80	4/5656 (0.1%)
3	D	0.34	0/7538	0.75	2/10222 (0.0%)
4	A	0.28	0/2505	0.70	0/3374
5	C	0.28	0/2538	0.73	2/3428 (0.1%)
All	All	0.32	0/19379	0.75	10/26239 (0.0%)

Chiral center outliers are detected by calculating the chiral volume of a chiral center and verifying if the center is modelled as a planar moiety or with the opposite hand. A planarity outlier is detected by checking planarity of atoms in a peptide group, atoms in a mainchain group or atoms of a sidechain that are expected to be planar.

Mol	Chain	#Chirality outliers	#Planarity outliers
1	N	0	4
2	M	0	4
3	D	0	8
4	A	0	3
5	C	0	3
All	All	0	22

There are no bond length outliers.

All (10) bond angle outliers are listed below:

Mol	Chain	Res	Type	Atoms	Z	Observed(°)	Ideal(°)
5	C	277	VAL	CA-C-N	5.54	132.13	121.54
5	C	277	VAL	C-N-CA	5.54	132.13	121.54
2	M	502	PRO	CA-C-N	5.33	131.72	121.54
2	M	502	PRO	C-N-CA	5.33	131.72	121.54
2	M	87	LYS	CA-C-N	5.24	127.87	122.27
2	M	87	LYS	C-N-CA	5.24	127.87	122.27

Continued on next page...

Continued from previous page...

Mol	Chain	Res	Type	Atoms	Z	Observed(°)	Ideal(°)
3	D	1495	PRO	CA-C-N	5.19	131.46	121.54
3	D	1495	PRO	C-N-CA	5.19	131.46	121.54
1	N	245	TYR	CA-C-N	5.11	126.14	120.06
1	N	245	TYR	C-N-CA	5.11	126.14	120.06

There are no chirality outliers.

All (22) planarity outliers are listed below:

Mol	Chain	Res	Type	Group
4	A	275	VAL	Peptide
4	A	298	GLU	Peptide,Mainchain
5	C	169	PRO	Peptide
5	C	320	LEU	Peptide
5	C	62	PRO	Peptide
3	D	1484	GLN	Peptide
3	D	1583	ARG	Peptide
3	D	258	VAL	Peptide
3	D	288	GLU	Peptide
3	D	730	PRO	Peptide
3	D	82	TYR	Peptide
3	D	827	PRO	Peptide
3	D	828	PRO	Peptide
2	M	131	ARG	Peptide
2	M	23	LEU	Peptide
2	M	379	ASN	Peptide
2	M	506	ASN	Peptide
1	N	17	PRO	Peptide
1	N	202	GLY	Peptide
1	N	267	TYR	Peptide
1	N	369	LEU	Peptide

5.2 Too-close contacts ⓘ

In the following table, the Non-H and H(model) columns list the number of non-hydrogen atoms and hydrogen atoms in the chain respectively. The H(added) column lists the number of hydrogen atoms added and optimized by MolProbity. The Clashes column lists the number of clashes within the asymmetric unit, whereas Symm-Clashes lists symmetry-related clashes.

Mol	Chain	Non-H	H(model)	H(added)	Clashes	Symm-Clashes
1	N	2579	0	2603	35	0
2	M	4084	0	4086	57	0

Continued on next page...

Continued from previous page...

Mol	Chain	Non-H	H(model)	H(added)	Clashes	Symm-Clashes
3	D	7349	0	7185	102	0
4	A	2459	0	2458	41	0
5	C	2485	0	2452	56	0
6	A	32	0	13	0	0
All	All	18988	0	18797	278	0

The all-atom clashscore is defined as the number of clashes found per 1000 atoms (including hydrogen atoms). The all-atom clashscore for this structure is 7.

All (278) close contacts within the same asymmetric unit are listed below, sorted by their clash magnitude.

Atom-1	Atom-2	Interatomic distance (Å)	Clash overlap (Å)
5:C:171:MET:O	5:C:210:LYS:HB2	1.71	0.90
3:D:241:SER:HA	3:D:247:LYS:O	1.72	0.90
2:M:451:THR:HA	2:M:455:ASP:O	1.78	0.84
2:M:452:SER:O	2:M:455:ASP:HA	1.78	0.82
4:A:255:ARG:O	5:C:314:SER:HA	1.82	0.79
4:A:260:ALA:O	4:A:275:VAL:HA	1.83	0.78
5:C:172:ASN:HA	5:C:210:LYS:O	1.84	0.76
2:M:208:TYR:O	2:M:212:CYS:HB2	1.86	0.74
4:A:261:ALA:HA	4:A:274:VAL:O	1.87	0.74
1:N:276:ALA:O	1:N:280:ASP:HB2	1.89	0.73
5:C:150:TYR:O	5:C:154:LEU:HB2	1.93	0.69
3:D:805:GLN:HE21	3:D:856:MET:HG2	1.58	0.69
3:D:224:THR:HG22	3:D:296:GLY:HA2	1.76	0.68
3:D:240:ALA:O	3:D:248:GLY:HA2	1.93	0.68
2:M:42:PRO:HB3	2:M:55:ALA:HB2	1.77	0.66
3:D:871:THR:HB	3:D:991:GLU:HB2	1.77	0.65
5:C:327:TYR:O	5:C:338:VAL:HA	1.97	0.64
3:D:101:GLU:HB2	3:D:142:GLY:O	1.97	0.64
5:C:88:ASN:HD21	5:C:267:LYS:HG2	1.62	0.64
3:D:809:GLN:NE2	3:D:812:GLN:OE1	2.30	0.64
4:A:256:ASN:HB3	4:A:259:PHE:HB3	1.81	0.62
1:N:257:ASP:OD1	1:N:261:GLN:NE2	2.32	0.62
1:N:318:LEU:HB2	1:N:321:ASN:HD22	1.65	0.62
2:M:88:ILE:HG22	2:M:91:VAL:HG12	1.82	0.62
3:D:196:VAL:O	3:D:200:LEU:HB2	2.00	0.61
2:M:116:ARG:HH22	2:M:121:MET:HE3	1.63	0.61
2:M:308:GLN:NE2	2:M:309:VAL:O	2.33	0.61
2:M:486:LEU:HD21	2:M:490:LEU:HD12	1.83	0.61
4:A:262:PHE:O	4:A:273:MET:HA	2.01	0.61

Continued on next page...

Continued from previous page...

Atom-1	Atom-2	Interatomic distance (Å)	Clash overlap (Å)
5:C:62:PRO:HD2	5:C:236:LEU:HD13	1.81	0.61
2:M:311:GLN:NE2	2:M:312:LEU:O	2.34	0.60
3:D:1387:LYS:NZ	3:D:1493:ASN:OD1	2.34	0.60
2:M:187:PRO:HG2	2:M:188:GLN:HG3	1.83	0.59
2:M:441:THR:HG23	2:M:442:PRO:HD3	1.84	0.59
3:D:1180:ILE:O	3:D:1184:MET:HB2	2.02	0.59
4:A:34:ARG:HH22	5:C:220:ILE:H	1.48	0.59
5:C:240:LEU:HB2	5:C:243:LEU:HB3	1.84	0.59
2:M:70:ALA:O	2:M:74:ALA:HB3	2.03	0.58
5:C:74:LYS:HE3	5:C:78:GLN:HE21	1.68	0.58
5:C:138:GLY:HA3	5:C:171:MET:HG2	1.85	0.58
1:N:257:ASP:O	1:N:261:GLN:NE2	2.36	0.58
4:A:171:LYS:HB2	4:A:229:GLU:HG2	1.86	0.58
1:N:89:CYS:SG	1:N:90:ASP:N	2.71	0.58
3:D:858:ARG:HB2	3:D:862:LYS:HB2	1.84	0.58
3:D:1481:GLY:HA2	3:D:1486:LYS:HA	1.85	0.57
5:C:144:ILE:HB	5:C:177:ILE:HA	1.86	0.57
1:N:204:ARG:NH1	1:N:237:SER:OG	2.38	0.57
3:D:1500:PRO:HG2	3:D:1513:LEU:HB2	1.87	0.57
3:D:770:TYR:HA	3:D:853:TRP:O	2.05	0.56
4:A:213:VAL:HG21	4:A:228:PHE:HB3	1.86	0.56
2:M:543:LEU:O	2:M:546:LYS:NZ	2.39	0.56
4:A:127:HIS:HA	4:A:162:THR:O	2.06	0.56
2:M:80:CYS:SG	2:M:81:GLY:N	2.77	0.56
2:M:184:ASN:ND2	2:M:251:SER:O	2.39	0.56
1:N:58:THR:O	2:M:87:LYS:O	2.23	0.56
4:A:124:CYS:O	4:A:159:CYS:HA	2.06	0.55
2:M:83:LYS:HE3	2:M:95:GLY:HA3	1.88	0.55
1:N:8:GLU:HG3	1:N:36:LEU:HD13	1.87	0.55
3:D:1296:VAL:HG22	3:D:1387:LYS:HG2	1.88	0.55
4:A:32:ILE:HG13	4:A:35:ASP:H	1.71	0.55
1:N:186:ASN:O	1:N:194:GLN:NE2	2.40	0.55
2:M:419:GLU:HG2	2:M:420:GLU:H	1.72	0.54
3:D:52:LEU:HD11	3:D:76:VAL:HG21	1.89	0.54
2:M:50:ASN:O	2:M:51:THR:C	2.49	0.54
2:M:248:ILE:O	2:M:252:LEU:HB2	2.07	0.54
3:D:307:LEU:HD12	3:D:349:LEU:HB3	1.90	0.54
3:D:1508:THR:HG22	3:D:1554:LEU:HD12	1.88	0.54
1:N:70:CYS:SG	1:N:71:ILE:N	2.81	0.54
1:N:188:GLN:HG2	3:D:423:ILE:HD12	1.89	0.54
3:D:72:THR:HA	3:D:75:GLN:HB2	1.89	0.54

Continued on next page...

Continued from previous page...

Atom-1	Atom-2	Interatomic distance (Å)	Clash overlap (Å)
3:D:1286:PHE:HB3	3:D:1292:LYS:HD3	1.89	0.54
3:D:355:GLN:HA	3:D:358:ILE:HD12	1.90	0.54
2:M:243:ILE:HD12	2:M:245:PRO:HD3	1.89	0.53
2:M:542:MET:HA	2:M:545:ASP:HB2	1.89	0.53
3:D:128:ILE:HG13	3:D:129:THR:HG23	1.90	0.53
3:D:215:GLU:OE2	3:D:263:ARG:NH2	2.37	0.53
2:M:9:SER:H	2:M:45:ARG:HB2	1.74	0.53
4:A:260:ALA:H	4:A:275:VAL:HG23	1.72	0.53
3:D:1311:PHE:O	3:D:1571:ARG:NH1	2.40	0.53
3:D:1215:VAL:HG23	3:D:1220:GLY:HA2	1.89	0.53
4:A:13:MET:HG2	4:A:63:CYS:HB2	1.89	0.53
3:D:854:LEU:HD12	3:D:866:LYS:HD2	1.91	0.53
5:C:63:ARG:NH1	5:C:135:ARG:O	2.42	0.53
3:D:377:VAL:HG21	3:D:407:PHE:HZ	1.74	0.53
4:A:252:MET:HE1	4:A:254:VAL:HG12	1.90	0.52
2:M:99:LEU:HB3	2:M:123:LEU:HD13	1.91	0.52
2:M:437:ARG:HG3	2:M:438:SER:H	1.75	0.52
5:C:203:LEU:HD21	5:C:211:LEU:HD13	1.92	0.52
5:C:155:THR:OG1	5:C:198:ARG:NH2	2.42	0.52
5:C:158:HIS:HA	5:C:161:VAL:HG12	1.91	0.52
3:D:277:LEU:O	3:D:281:TYR:HB2	2.10	0.52
4:A:223:ARG:NH2	5:C:299:TYR:O	2.38	0.52
5:C:75:ASN:HA	5:C:78:GLN:HB2	1.91	0.52
3:D:263:ARG:NE	3:D:1555:THR:OG1	2.42	0.52
4:A:198:ILE:HG22	4:A:276:MET:HE1	1.92	0.52
3:D:1375:HIS:HE1	3:D:1384:PHE:HA	1.74	0.51
2:M:441:THR:HG21	2:M:516:LEU:HD21	1.93	0.51
5:C:146:ALA:HB2	5:C:180:VAL:HA	1.93	0.51
1:N:167:PRO:HG2	1:N:228:LEU:HD21	1.92	0.51
3:D:767:GLN:HB3	3:D:851:GLN:HB2	1.91	0.51
3:D:308:GLU:HB3	3:D:838:ARG:HE	1.75	0.51
4:A:44:ASP:O	4:A:73:TYR:OH	2.28	0.51
2:M:550:VAL:HG11	2:M:563:VAL:HG23	1.93	0.51
3:D:342:VAL:HG22	3:D:379:LEU:HD21	1.93	0.51
2:M:28:PHE:HB3	2:M:43:ARG:HH21	1.76	0.50
2:M:490:LEU:HD13	2:M:493:HIS:HD2	1.75	0.50
3:D:318:ASP:OD2	3:D:356:ARG:NH2	2.45	0.50
1:N:128:LEU:HA	1:N:131:ILE:HD12	1.93	0.50
5:C:127:THR:O	5:C:131:GLU:N	2.44	0.50
5:C:258:LYS:HB2	5:C:340:ILE:HG12	1.93	0.50
3:D:988:ARG:O	3:D:988:ARG:NH2	2.42	0.50

Continued on next page...

Continued from previous page...

Atom-1	Atom-2	Interatomic distance (Å)	Clash overlap (Å)
1:N:195:GLN:NE2	3:D:397:TYR:OH	2.44	0.50
3:D:775:TYR:OH	3:D:800:GLU:OE1	2.30	0.50
5:C:88:ASN:HB2	5:C:265:VAL:HG23	1.93	0.50
5:C:88:ASN:ND2	5:C:265:VAL:O	2.44	0.50
2:M:380:PRO:HG2	2:M:383:PRO:HD3	1.93	0.50
1:N:279:ARG:HA	1:N:282:PHE:HD2	1.77	0.50
3:D:820:GLN:HE21	3:D:823:ASN:HB3	1.77	0.50
3:D:122:VAL:O	3:D:157:SER:HA	2.13	0.49
3:D:873:THR:OG1	3:D:994:ASN:ND2	2.45	0.49
5:C:154:LEU:HA	5:C:157:LEU:HD23	1.94	0.49
5:C:261:LEU:HD12	5:C:270:ILE:HD11	1.94	0.49
3:D:809:GLN:NE2	3:D:813:ILE:O	2.45	0.49
4:A:132:VAL:O	4:A:137:ARG:NE	2.46	0.49
3:D:832:SER:HA	3:D:1437:ALA:HB2	1.94	0.49
5:C:128:PHE:O	5:C:131:GLU:HB2	2.13	0.49
1:N:52:ASN:N	1:N:72:GLU:OE2	2.44	0.49
2:M:3:ASP:HB3	2:M:133:ASN:HD21	1.77	0.49
2:M:531:TYR:HD1	2:M:534:ASN:HD22	1.61	0.49
3:D:365:ASP:O	3:D:405:HIS:HA	2.12	0.49
3:D:327:ASP:O	3:D:328:ARG:NH1	2.46	0.48
5:C:193:ARG:NH1	5:C:197:GLN:OE1	2.45	0.48
1:N:15:PHE:HA	1:N:22:LYS:HG2	1.94	0.48
3:D:778:LEU:O	3:D:797:GLN:NE2	2.46	0.48
3:D:1504:HIS:HB2	3:D:1509:VAL:HG23	1.96	0.48
1:N:238:ILE:HD11	1:N:258:LYS:HE2	1.95	0.48
4:A:123:PHE:HD2	4:A:176:ILE:HG12	1.79	0.48
5:C:65:LEU:HD21	5:C:115:TRP:HE1	1.78	0.48
5:C:317:ILE:HA	5:C:326:LEU:O	2.14	0.48
2:M:84:PHE:HZ	2:M:92:ARG:HD3	1.79	0.48
4:A:263:ILE:HA	4:A:272:VAL:O	2.14	0.48
2:M:374:LEU:HA	2:M:377:PHE:HD2	1.79	0.48
3:D:111:ARG:HD2	3:D:988:ARG:HH12	1.78	0.47
3:D:755:LEU:HD23	3:D:988:ARG:HH11	1.78	0.47
5:C:187:HIS:HA	5:C:190:GLU:HG2	1.97	0.47
3:D:236:GLU:HG3	3:D:836:TYR:HA	1.95	0.47
3:D:352:LEU:HD21	3:D:817:PRO:HD2	1.96	0.47
3:D:1252:ILE:HG12	3:D:1352:ARG:HH12	1.79	0.47
3:D:1442:PRO:HA	3:D:1545:GLY:HA3	1.96	0.47
2:M:437:ARG:NH2	2:M:484:GLU:O	2.38	0.47
2:M:438:SER:OG	2:M:439:LEU:N	2.46	0.47
3:D:97:LEU:HD21	3:D:154:GLY:HA3	1.95	0.47

Continued on next page...

Continued from previous page...

Atom-1	Atom-2	Interatomic distance (Å)	Clash overlap (Å)
5:C:66:LEU:HD11	5:C:78:GLN:HB3	1.95	0.47
2:M:61:ASP:OD2	2:M:131:ARG:NH2	2.45	0.47
3:D:340:VAL:HG22	3:D:369:MET:HE2	1.96	0.47
4:A:114:LEU:HD12	4:A:155:LEU:HD23	1.97	0.47
3:D:223:ARG:HE	3:D:305:ASN:HB3	1.79	0.47
4:A:201:ASP:HB2	4:A:275:VAL:HG13	1.97	0.47
5:C:360:ARG:HA	5:C:363:ILE:HG22	1.97	0.47
2:M:219:LEU:HD23	2:M:271:LEU:HB2	1.97	0.46
4:A:172:ALA:O	4:A:175:SER:OG	2.27	0.46
1:N:9:CYS:HB2	1:N:88:VAL:HG13	1.97	0.46
2:M:182:ASP:HB3	2:M:419:GLU:HB2	1.96	0.46
5:C:91:LEU:O	5:C:95:SER:OG	2.34	0.46
2:M:90:ASN:HA	2:M:132:ALA:HB2	1.96	0.46
3:D:39:VAL:HG11	3:D:59:LYS:H	1.80	0.46
3:D:852:TYR:HB2	3:D:868:LYS:HD2	1.97	0.46
4:A:295:LYS:O	4:A:299:LYS:NZ	2.40	0.46
5:C:101:LYS:HD3	5:C:237:ILE:HG23	1.97	0.46
5:C:101:LYS:NZ	5:C:237:ILE:O	2.48	0.46
3:D:218:VAL:HG11	3:D:274:ILE:HD11	1.97	0.46
4:A:258:ASN:HA	4:A:279:PRO:HG3	1.97	0.46
5:C:146:ALA:HA	5:C:180:VAL:HG13	1.98	0.46
1:N:363:HIS:CE1	1:N:364:GLU:HG3	2.52	0.45
5:C:163:LYS:HA	5:C:166:LYS:HG2	1.99	0.45
2:M:219:LEU:HB3	2:M:271:LEU:HD13	1.99	0.45
3:D:1579:PHE:HD1	3:D:1586:ARG:HD3	1.81	0.45
4:A:291:ARG:HH21	4:A:295:LYS:HZ2	1.64	0.45
3:D:171:VAL:O	3:D:216:VAL:HA	2.16	0.45
3:D:185:ASP:HB3	3:D:191:TYR:CZ	2.51	0.45
5:C:318:ILE:O	5:C:325:VAL:HA	2.17	0.45
2:M:486:LEU:HD23	2:M:494:GLU:HG3	1.97	0.45
4:A:130:ASP:OD1	4:A:130:ASP:N	2.48	0.45
2:M:53:ASP:OD1	2:M:53:ASP:N	2.49	0.45
2:M:182:ASP:H	2:M:256:ARG:NH2	2.14	0.45
2:M:452:SER:OG	2:M:453:SER:N	2.50	0.45
3:D:974:ARG:HH22	3:D:979:GLU:HB2	1.81	0.45
4:A:204:LEU:HB3	4:A:206:PHE:CE2	2.52	0.45
4:A:206:PHE:HE1	4:A:213:VAL:HG22	1.80	0.45
2:M:439:LEU:HD11	2:M:442:PRO:HD2	1.99	0.45
3:D:175:ILE:HB	3:D:220:LEU:HD23	1.99	0.45
3:D:179:CYS:N	3:D:297:ASP:O	2.50	0.45
5:C:175:VAL:HG13	5:C:213:LEU:HA	1.98	0.45

Continued on next page...

Continued from previous page...

Atom-1	Atom-2	Interatomic distance (Å)	Clash overlap (Å)
1:N:62:LYS:HD2	2:M:84:PHE:HB3	1.98	0.44
5:C:74:LYS:HE2	5:C:143:VAL:HG21	1.99	0.44
2:M:520:PHE:HA	2:M:560:VAL:HG22	2.00	0.44
3:D:352:LEU:HD11	3:D:817:PRO:HB2	1.99	0.44
3:D:1212:HIS:HA	3:D:1215:VAL:HG12	1.99	0.44
4:A:260:ALA:HB2	4:A:279:PRO:HA	1.98	0.44
3:D:59:LYS:NZ	3:D:64:LYS:O	2.51	0.44
3:D:1368:GLU:HA	3:D:1393:VAL:HG11	1.98	0.44
2:M:185:GLU:HG2	2:M:190:PRO:HD3	1.98	0.44
3:D:242:ILE:HD13	3:D:247:LYS:HD2	2.00	0.44
3:D:852:TYR:O	3:D:868:LYS:HB3	2.17	0.44
1:N:75:LYS:O	1:N:81:LEU:HB3	2.17	0.44
3:D:215:GLU:HG3	3:D:328:ARG:HE	1.83	0.44
5:C:192:GLN:HG2	5:C:196:HIS:CD2	2.53	0.44
1:N:118:PHE:O	1:N:124:SER:OG	2.35	0.43
3:D:229:LYS:HB2	3:D:234:PHE:HE1	1.83	0.43
3:D:988:ARG:HD2	3:D:992:GLY:HA3	2.00	0.43
4:A:259:PHE:H	4:A:279:PRO:HB3	1.82	0.43
5:C:102:ASP:OD1	5:C:105:SER:HB2	2.18	0.43
3:D:377:VAL:HG21	3:D:407:PHE:CZ	2.53	0.43
4:A:134:GLU:HA	4:A:137:ARG:HD2	2.00	0.43
4:A:238:PHE:HB2	5:C:291:VAL:HG21	1.99	0.43
3:D:316:VAL:HG22	3:D:1434:PRO:HD2	2.00	0.43
2:M:35:PRO:O	2:M:41:LYS:NZ	2.42	0.43
3:D:1253:TYR:N	3:D:1374:TYR:OH	2.52	0.43
1:N:16:HIS:ND1	1:N:17:PRO:O	2.38	0.43
3:D:355:GLN:HE22	3:D:846:PRO:HD3	1.82	0.43
1:N:101:ILE:HG23	1:N:157:LEU:HD22	2.00	0.43
4:A:254:VAL:HG23	5:C:316:ALA:HB2	2.00	0.43
2:M:222:ASN:HD21	2:M:227:VAL:HB	1.83	0.43
3:D:1218:VAL:HG12	3:D:1219:GLU:H	1.84	0.43
4:A:123:PHE:CD2	4:A:176:ILE:HG12	2.54	0.43
5:C:348:ARG:HH21	5:C:351:LEU:HD22	1.84	0.43
1:N:207:GLN:NE2	1:N:325:ARG:O	2.52	0.43
1:N:217:LEU:HA	1:N:220:VAL:HG12	2.00	0.43
3:D:1423:PRO:O	3:D:1425:ALA:N	2.52	0.43
3:D:108:TYR:CZ	3:D:324:ARG:HD3	2.54	0.43
3:D:872:VAL:HA	3:D:993:LEU:O	2.18	0.42
4:A:15:LYS:HZ1	4:A:105:TYR:HE2	1.65	0.42
5:C:331:VAL:HG23	5:C:360:ARG:HH22	1.84	0.42
1:N:58:THR:O	2:M:87:LYS:C	2.62	0.42

Continued on next page...

Continued from previous page...

Atom-1	Atom-2	Interatomic distance (Å)	Clash overlap (Å)
3:D:1487:TYR:HE1	3:D:1511:LEU:HD12	1.85	0.42
5:C:80:VAL:O	5:C:84:LYS:HB2	2.19	0.42
2:M:70:ALA:O	2:M:74:ALA:CB	2.66	0.42
3:D:115:TRP:HE1	3:D:981:GLN:HE22	1.67	0.42
2:M:130:LEU:HD22	2:M:134:ALA:HB2	2.02	0.42
3:D:111:ARG:CZ	3:D:988:ARG:HH22	2.33	0.41
3:D:826:VAL:HG11	3:D:835:LEU:HD22	2.02	0.41
4:A:173:TRP:CD1	4:A:176:ILE:HD12	2.54	0.41
3:D:1183:ALA:HB2	3:D:1230:ILE:HD13	2.02	0.41
1:N:206:ILE:HD12	2:M:518:HIS:NE2	2.36	0.41
1:N:215:VAL:HG12	3:D:733:VAL:HB	2.02	0.41
3:D:101:GLU:HG3	3:D:143:GLU:HG3	2.01	0.41
4:A:250:GLN:HE22	5:C:321:ASN:HA	1.85	0.41
3:D:796:GLN:HG2	3:D:1283:VAL:HG22	2.02	0.41
3:D:1171:LEU:HD13	3:D:1217:HIS:CG	2.55	0.41
4:A:10:VAL:HA	4:A:87:VAL:O	2.20	0.41
1:N:148:PRO:HA	1:N:154:THR:HA	2.02	0.41
3:D:46:ASP:N	3:D:46:ASP:OD1	2.53	0.41
3:D:1237:GLU:HA	3:D:1256:TYR:CE1	2.56	0.41
5:C:341:LEU:HD21	5:C:344:GLU:HB3	2.02	0.41
1:N:213:ALA:HB1	1:N:215:VAL:HG13	2.02	0.41
3:D:99:LEU:HA	3:D:161:ARG:O	2.20	0.41
3:D:109:ILE:HG23	3:D:113:ASP:HB2	2.02	0.41
3:D:761:PRO:HG3	3:D:995:ARG:HH22	1.86	0.41
5:C:86:SER:HA	5:C:89:GLU:HB2	2.03	0.41
5:C:333:LYS:HG2	5:C:334:PHE:CD2	2.55	0.41
4:A:20:LYS:HB2	4:A:20:LYS:HE3	1.89	0.41
5:C:229:PHE:CD2	5:C:268:ILE:HD13	2.56	0.41
1:N:254:LEU:HG	1:N:255:VAL:HG23	2.03	0.40
3:D:111:ARG:HH11	3:D:988:ARG:HH12	1.69	0.40
3:D:254:PHE:HD2	3:D:285:VAL:HG22	1.87	0.40
4:A:276:MET:HE3	4:A:276:MET:HB3	1.98	0.40
3:D:801:GLU:OE2	3:D:858:ARG:NH1	2.45	0.40
3:D:779:PRO:HA	3:D:797:GLN:HE22	1.85	0.40
3:D:1576:PHE:O	3:D:1580:CYS:HB2	2.21	0.40
1:N:63:LYS:HE2	1:N:64:LEU:HD13	2.02	0.40
1:N:105:LEU:HD21	1:N:157:LEU:HD11	2.03	0.40
2:M:205:LYS:HA	2:M:208:TYR:CZ	2.56	0.40
5:C:233:VAL:HG11	5:C:268:ILE:HG12	2.02	0.40
5:C:267:LYS:HD2	5:C:267:LYS:HA	1.92	0.40
5:C:345:SER:OG	5:C:347:GLU:OE1	2.33	0.40

Continued on next page...

Continued from previous page...

Atom-1	Atom-2	Interatomic distance (Å)	Clash overlap (Å)
2:M:523:ARG:HE	2:M:526:LEU:HG	1.86	0.40
3:D:1388:LEU:HD13	3:D:1398:LEU:HD21	2.04	0.40
5:C:153:ALA:HA	5:C:156:ARG:HG3	2.03	0.40

There are no symmetry-related clashes.

5.3 Torsion angles [i](#)

5.3.1 Protein backbone [i](#)

In the following table, the Percentiles column shows the percent Ramachandran outliers of the chain as a percentile score with respect to all PDB entries followed by that with respect to all EM entries.

The Analysed column shows the number of residues for which the backbone conformation was analysed, and the total number of residues.

Mol	Chain	Analysed	Favoured	Allowed	Outliers	Percentiles	
1	N	313/380 (82%)	271 (87%)	41 (13%)	1 (0%)	37	71
2	M	507/569 (89%)	405 (80%)	98 (19%)	4 (1%)	16	53
3	D	879/1603 (55%)	728 (83%)	148 (17%)	3 (0%)	37	71
4	A	298/313 (95%)	257 (86%)	39 (13%)	2 (1%)	19	55
5	C	305/399 (76%)	245 (80%)	60 (20%)	0	100	100
All	All	2302/3264 (70%)	1906 (83%)	386 (17%)	10 (0%)	32	66

All (10) Ramachandran outliers are listed below:

Mol	Chain	Res	Type
4	A	77	GLN
3	D	1566	GLU
1	N	21	PRO
2	M	23	LEU
2	M	151	THR
2	M	455	ASP
3	D	763	ARG
4	A	250	GLN
3	D	259	VAL
2	M	380	PRO

5.3.2 Protein sidechains ⓘ

In the following table, the Percentiles column shows the percent sidechain outliers of the chain as a percentile score with respect to all PDB entries followed by that with respect to all EM entries.

The Analysed column shows the number of residues for which the sidechain conformation was analysed, and the total number of residues.

Mol	Chain	Analysed	Rotameric	Outliers	Percentiles	
1	N	296/351 (84%)	292 (99%)	4 (1%)	62	75
2	M	456/504 (90%)	453 (99%)	3 (1%)	81	86
3	D	809/1412 (57%)	801 (99%)	8 (1%)	73	81
4	A	275/287 (96%)	270 (98%)	5 (2%)	54	71
5	C	280/340 (82%)	279 (100%)	1 (0%)	89	91
All	All	2116/2894 (73%)	2095 (99%)	21 (1%)	71	81

All (21) residues with a non-rotameric sidechain are listed below:

Mol	Chain	Res	Type
1	N	85	LEU
1	N	88	VAL
1	N	128	LEU
1	N	369	LEU
2	M	424	ARG
2	M	441	THR
2	M	550	VAL
3	D	77	PHE
3	D	307	LEU
3	D	377	VAL
3	D	420	THR
3	D	828	PRO
3	D	1221	ILE
3	D	1253	TYR
3	D	1509	VAL
4	A	10	VAL
4	A	180	LEU
4	A	235	ILE
4	A	252	MET
4	A	266	PHE
5	C	175	VAL

Sometimes sidechains can be flipped to improve hydrogen bonding and reduce clashes. All (56)

such sidechains are listed below:

Mol	Chain	Res	Type
1	N	26	GLN
1	N	195	GLN
1	N	205	HIS
1	N	218	ASN
1	N	321	ASN
1	N	349	HIS
2	M	50	ASN
2	M	54	HIS
2	M	102	HIS
2	M	133	ASN
2	M	144	ASN
2	M	192	HIS
2	M	311	GLN
2	M	392	GLN
2	M	480	GLN
2	M	493	HIS
2	M	565	GLN
3	D	176	GLN
3	D	197	ASN
3	D	303	GLN
3	D	311	ASN
3	D	315	ASN
3	D	355	GLN
3	D	383	HIS
3	D	384	ASN
3	D	768	ASN
3	D	797	GLN
3	D	805	GLN
3	D	981	GLN
3	D	994	ASN
3	D	1186	HIS
3	D	1238	GLN
3	D	1389	HIS
3	D	1438	GLN
3	D	1473	GLN
3	D	1498	ASN
3	D	1551	ASN
4	A	47	HIS
4	A	107	GLN
4	A	136	GLN
4	A	179	GLN
4	A	186	GLN

Continued on next page...

Continued from previous page...

Mol	Chain	Res	Type
4	A	222	GLN
4	A	250	GLN
4	A	258	ASN
5	C	75	ASN
5	C	78	GLN
5	C	88	ASN
5	C	106	ASN
5	C	111	ASN
5	C	178	HIS
5	C	187	HIS
5	C	192	GLN
5	C	196	HIS
5	C	212	HIS
5	C	364	HIS

5.3.3 RNA [i](#)

There are no RNA molecules in this entry.

5.4 Non-standard residues in protein, DNA, RNA chains [i](#)

There are no non-standard protein/DNA/RNA residues in this entry.

5.5 Carbohydrates [i](#)

There are no oligosaccharides in this entry.

5.6 Ligand geometry [i](#)

1 ligand is modelled in this entry.

In the following table, the Counts columns list the number of bonds (or angles) for which Mogul statistics could be retrieved, the number of bonds (or angles) that are observed in the model and the number of bonds (or angles) that are defined in the Chemical Component Dictionary. The Link column lists molecule types, if any, to which the group is linked. The Z score for a bond length (or angle) is the number of standard deviations the observed value is removed from the expected value. A bond length (or angle) with $|Z| > 2$ is considered an outlier worth inspection. RMSZ is the root-mean-square of all Z scores of the bond lengths (or angles).

Mol	Type	Chain	Res	Link	Bond lengths			Bond angles		
					Counts	RMSZ	# Z > 2	Counts	RMSZ	# Z > 2
6	GNP	A	500	-	29,34,34	2.53	6 (20%)	33,54,54	1.94	7 (21%)

In the following table, the Chirals column lists the number of chiral outliers, the number of chiral centers analysed, the number of these observed in the model and the number defined in the Chemical Component Dictionary. Similar counts are reported in the Torsion and Rings columns. '-' means no outliers of that kind were identified.

Mol	Type	Chain	Res	Link	Chirals	Torsions	Rings
6	GNP	A	500	-	-	2/14/38/38	0/3/3/3

All (6) bond length outliers are listed below:

Mol	Chain	Res	Type	Atoms	Z	Observed(Å)	Ideal(Å)
6	A	500	GNP	PG-O1G	9.96	1.61	1.46
6	A	500	GNP	PG-N3B	4.40	1.74	1.63
6	A	500	GNP	PB-N3B	4.29	1.74	1.63
6	A	500	GNP	C5-C6	3.85	1.48	1.41
6	A	500	GNP	PG-O2G	-3.18	1.48	1.56
6	A	500	GNP	PB-O3A	2.22	1.61	1.59

All (7) bond angle outliers are listed below:

Mol	Chain	Res	Type	Atoms	Z	Observed(°)	Ideal(°)
6	A	500	GNP	C2-N3-C4	5.05	120.93	115.48
6	A	500	GNP	C2-N1-C6	4.39	122.07	115.96
6	A	500	GNP	C5-C6-N1	-4.17	117.85	123.42
6	A	500	GNP	N3-C2-N1	-3.21	123.13	127.21
6	A	500	GNP	O1B-PB-N3B	-3.17	107.11	111.77
6	A	500	GNP	C4-C5-N7	-3.04	106.12	109.34
6	A	500	GNP	C4-C5-C6	-2.24	117.80	121.23

There are no chirality outliers.

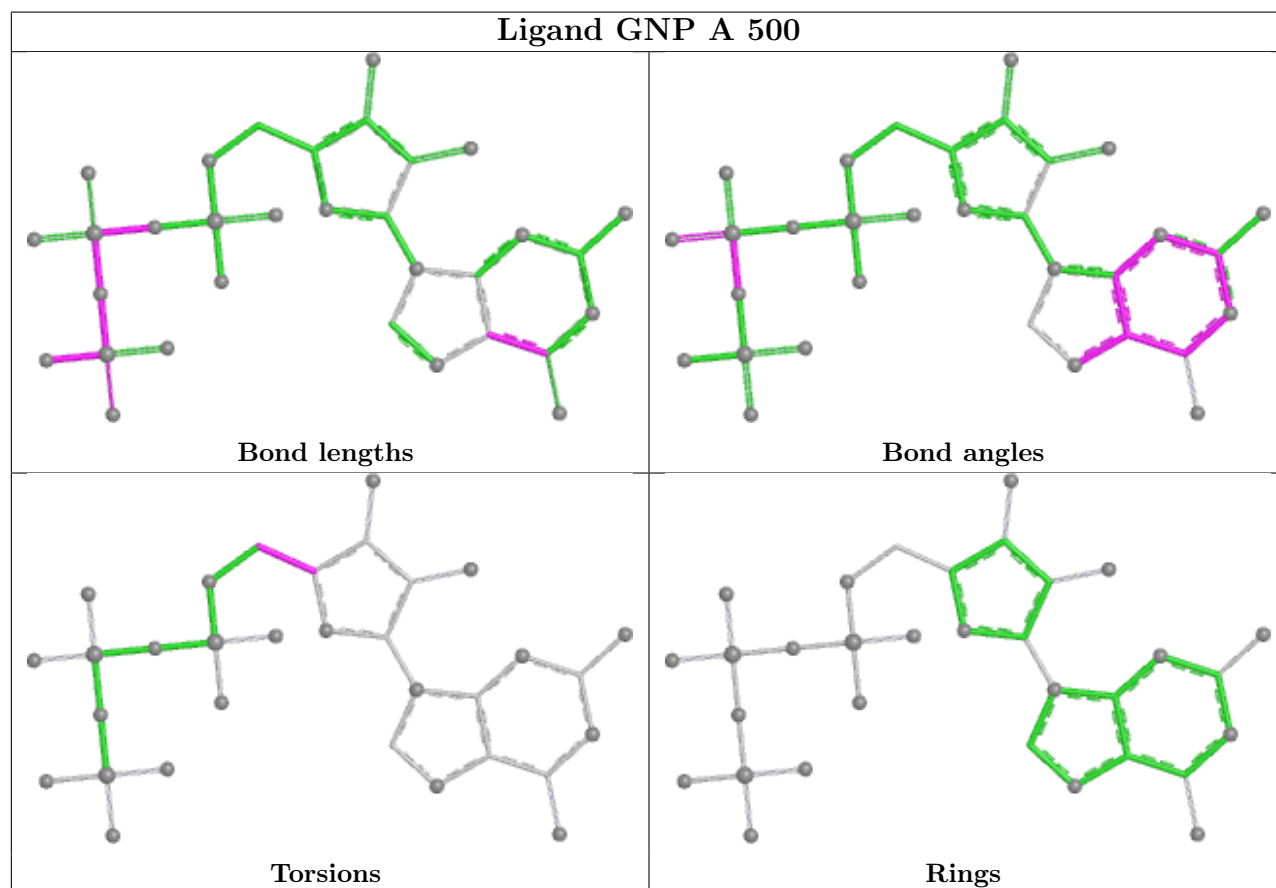
All (2) torsion outliers are listed below:

Mol	Chain	Res	Type	Atoms
6	A	500	GNP	O4'-C4'-C5'-O5'
6	A	500	GNP	C3'-C4'-C5'-O5'

There are no ring outliers.

No monomer is involved in short contacts.

The following is a two-dimensional graphical depiction of Mogul quality analysis of bond lengths, bond angles, torsion angles, and ring geometry for all instances of the Ligand of Interest. In addition, ligands with molecular weight > 250 and outliers as shown on the validation Tables will also be included. For torsion angles, if less than 5% of the Mogul distribution of torsion angles is within 10 degrees of the torsion angle in question, then that torsion angle is considered an outlier. Any bond that is central to one or more torsion angles identified as an outlier by Mogul will be highlighted in the graph. For rings, the root-mean-square deviation (RMSD) between the ring in question and similar rings identified by Mogul is calculated over all ring torsion angles. If the average RMSD is greater than 60 degrees and the minimal RMSD between the ring in question and any Mogul-identified rings is also greater than 60 degrees, then that ring is considered an outlier. The outliers are highlighted in purple. The color gray indicates Mogul did not find sufficient equivalents in the CSD to analyse the geometry.



5.7 Other polymers [i](#)

There are no such residues in this entry.

5.8 Polymer linkage issues [i](#)

There are no chain breaks in this entry.

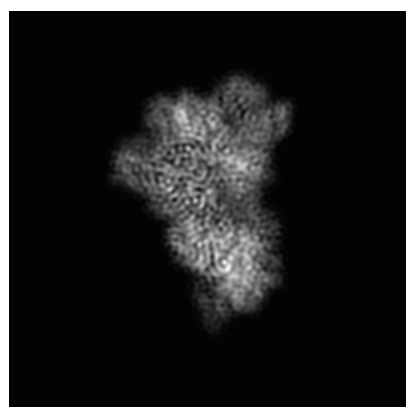
6 Map visualisation [i](#)

This section contains visualisations of the EMDB entry EMD-7464. These allow visual inspection of the internal detail of the map and identification of artifacts.

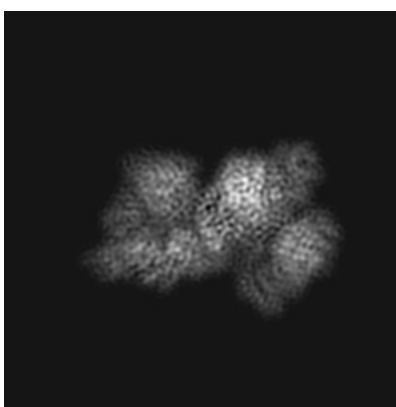
No raw map or half-maps were deposited for this entry and therefore no images, graphs, etc. pertaining to the raw map can be shown.

6.1 Orthogonal projections [i](#)

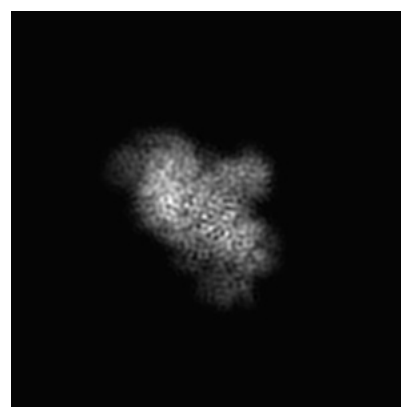
6.1.1 Primary map



X



Y

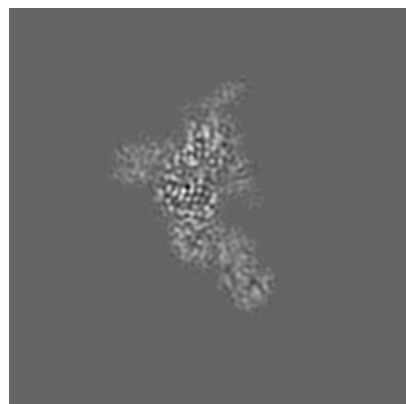


Z

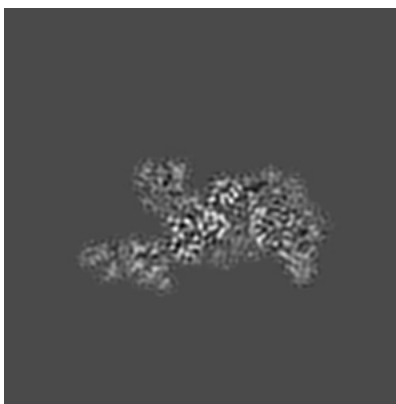
The images above show the map projected in three orthogonal directions.

6.2 Central slices [i](#)

6.2.1 Primary map



X Index: 100



Y Index: 100

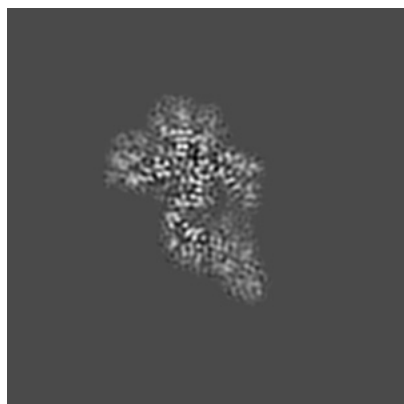


Z Index: 100

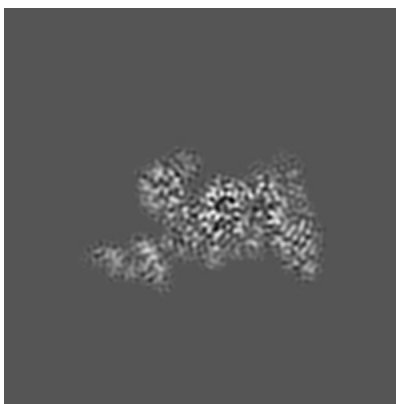
The images above show central slices of the map in three orthogonal directions.

6.3 Largest variance slices [i](#)

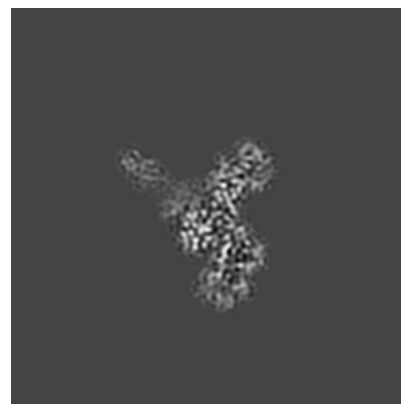
6.3.1 Primary map



X Index: 107



Y Index: 96



Z Index: 117

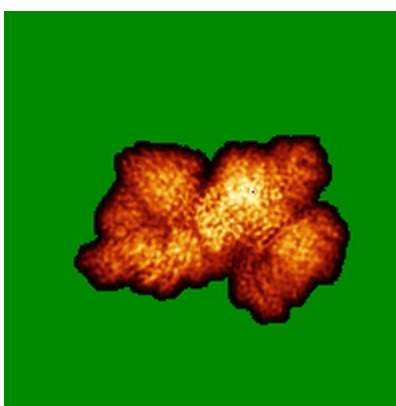
The images above show the largest variance slices of the map in three orthogonal directions.

6.4 Orthogonal standard-deviation projections (False-color) [i](#)

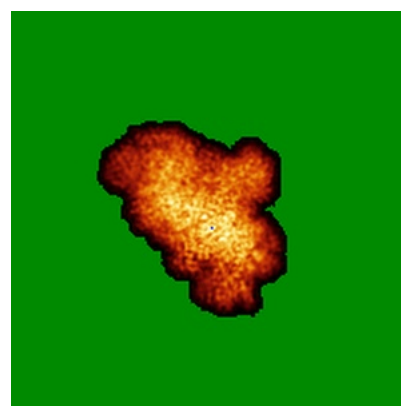
6.4.1 Primary map



X



Y



Z

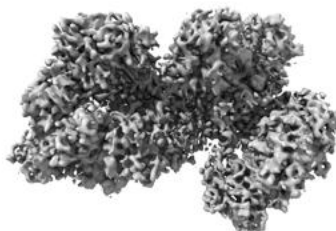
The images above show the map standard deviation projections with false color in three orthogonal directions. Minimum values are shown in green, max in blue, and dark to light orange shades represent small to large values respectively.

6.5 Orthogonal surface views [i](#)

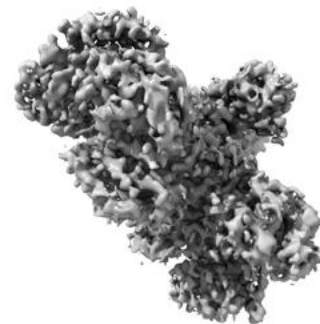
6.5.1 Primary map



X



Y



Z

The images above show the 3D surface view of the map at the recommended contour level 0.043. These images, in conjunction with the slice images, may facilitate assessment of whether an appropriate contour level has been provided.

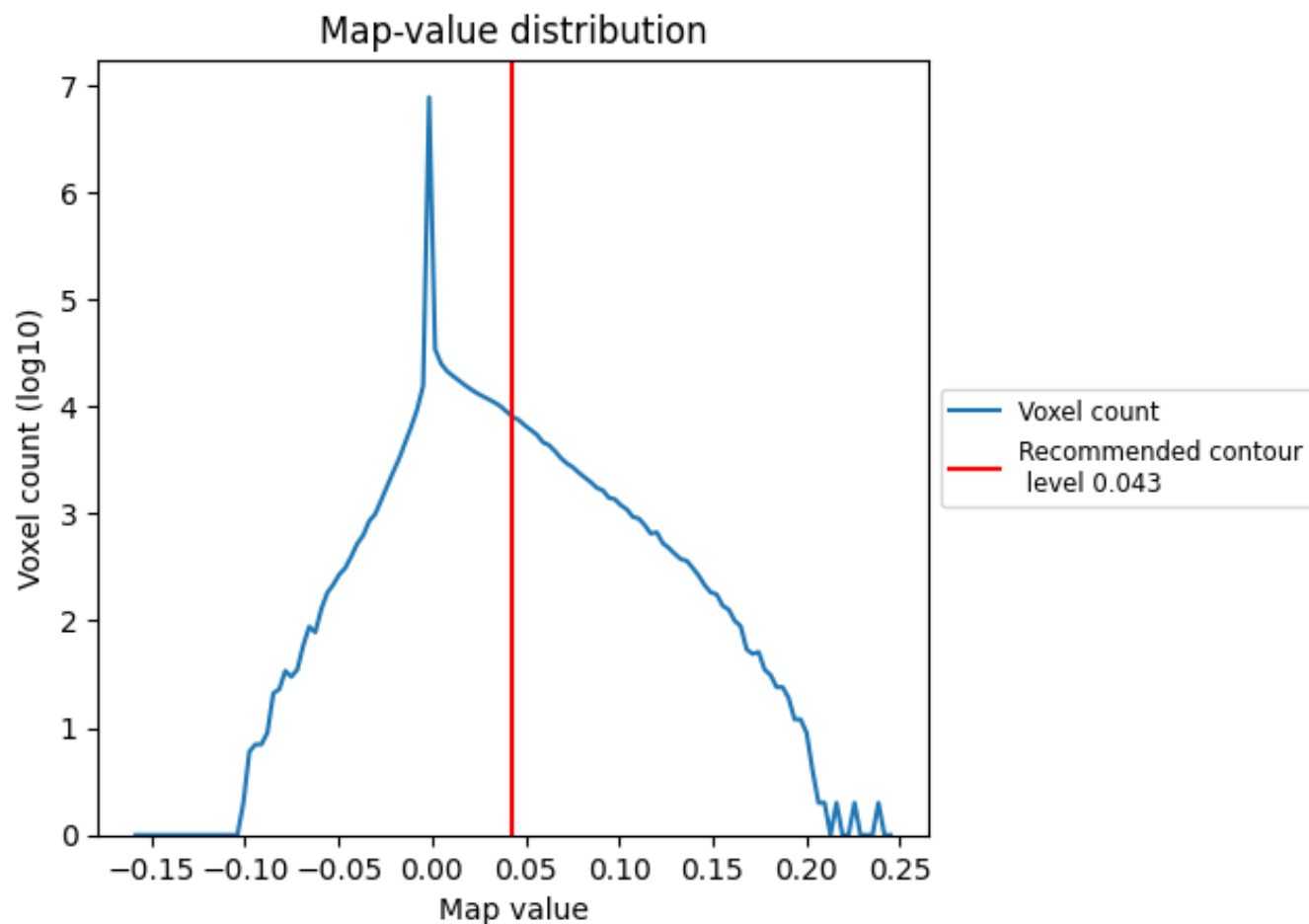
6.6 Mask visualisation [i](#)

This section was not generated. No masks/segmentation were deposited.

7 Map analysis [i](#)

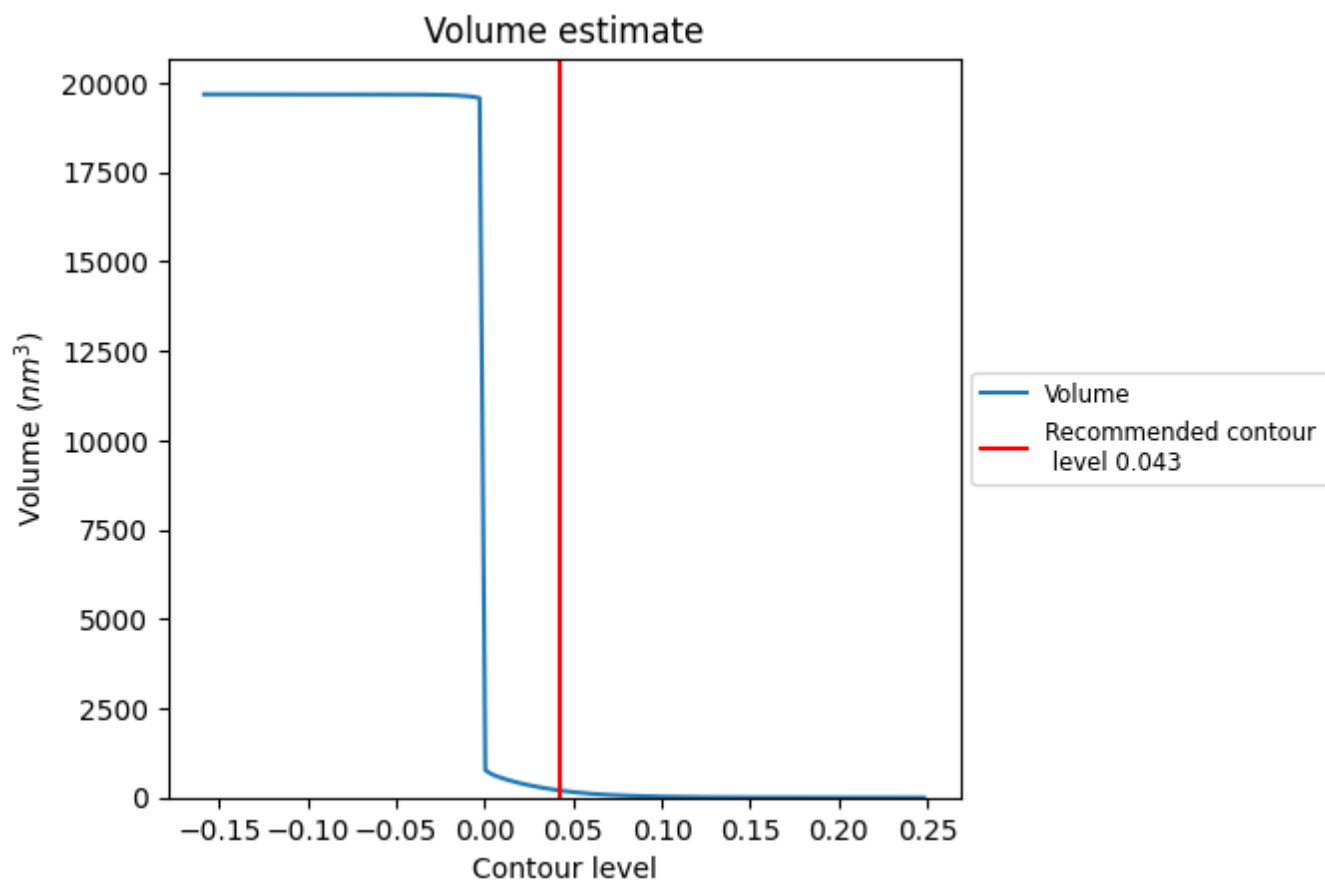
This section contains the results of statistical analysis of the map.

7.1 Map-value distribution [i](#)



The map-value distribution is plotted in 128 intervals along the x-axis. The y-axis is logarithmic. A spike in this graph at zero usually indicates that the volume has been masked.

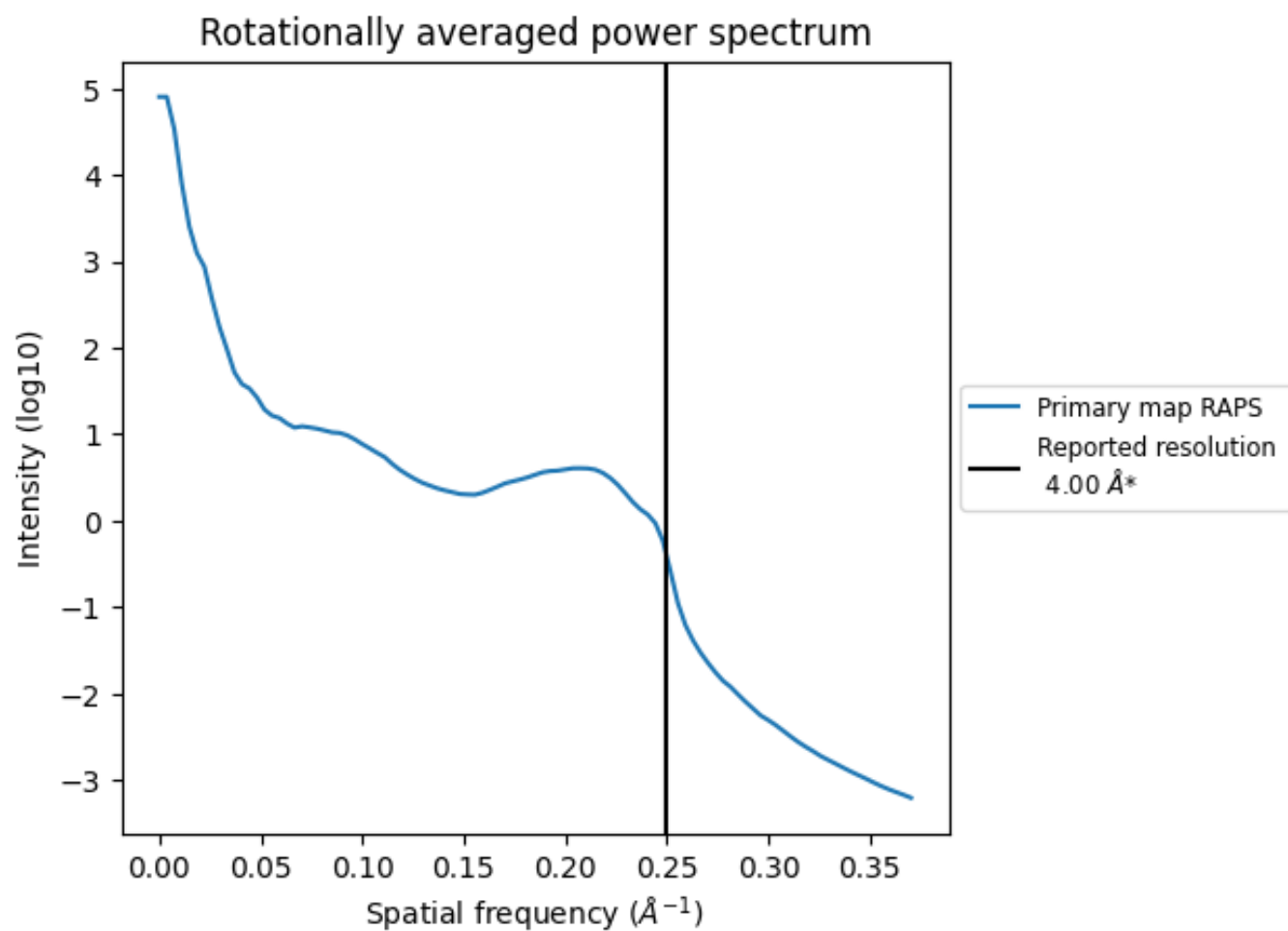
7.2 Volume estimate [i](#)



The volume at the recommended contour level is 194 nm³; this corresponds to an approximate mass of 176 kDa.

The volume estimate graph shows how the enclosed volume varies with the contour level. The recommended contour level is shown as a vertical line and the intersection between the line and the curve gives the volume of the enclosed surface at the given level.

7.3 Rotationally averaged power spectrum ⓘ



*Reported resolution corresponds to spatial frequency of 0.250 Å⁻¹

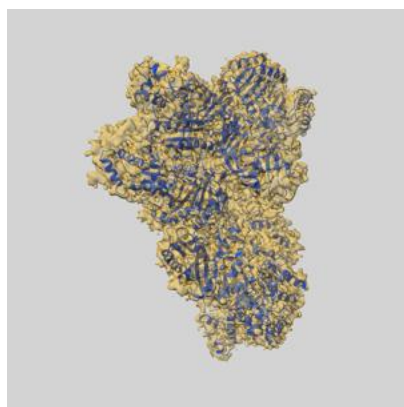
8 Fourier-Shell correlation ⓘ

This section was not generated. No FSC curve or half-maps provided.

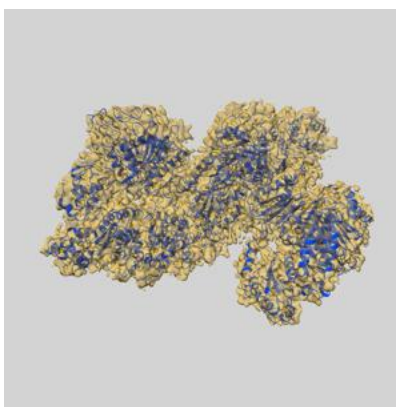
9 Map-model fit [i](#)

This section contains information regarding the fit between EMDB map EMD-7464 and PDB model 6CES. Per-residue inclusion information can be found in [section 3](#) on [page 5](#).

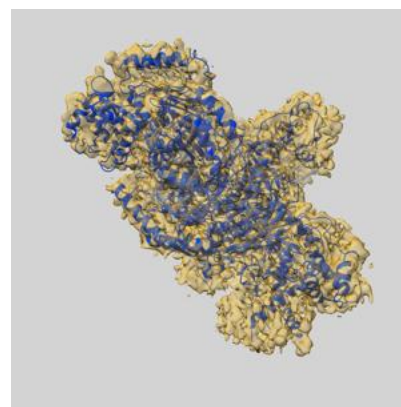
9.1 Map-model overlay [i](#)



X



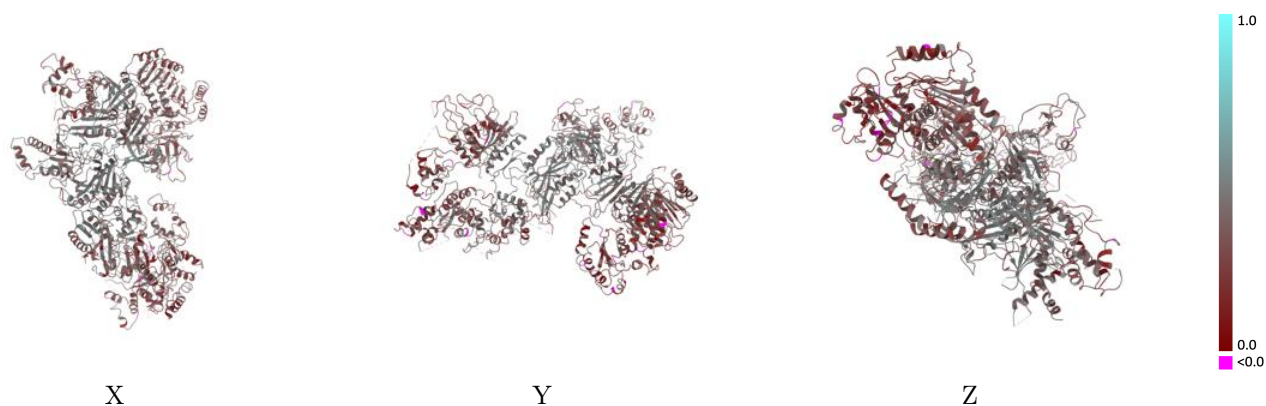
Y



Z

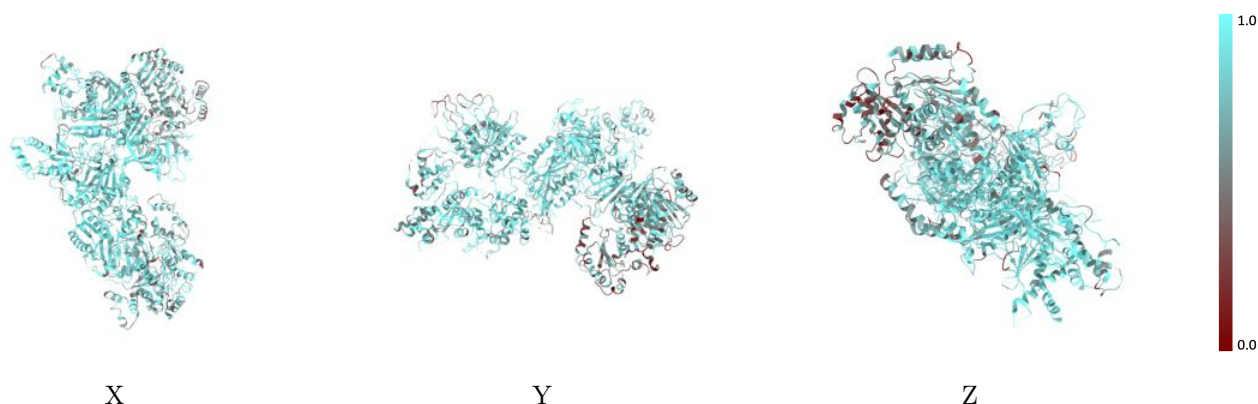
The images above show the 3D surface view of the map at the recommended contour level 0.043 at 50% transparency in yellow overlaid with a ribbon representation of the model coloured in blue. These images allow for the visual assessment of the quality of fit between the atomic model and the map.

9.2 Q-score mapped to coordinate model [i](#)



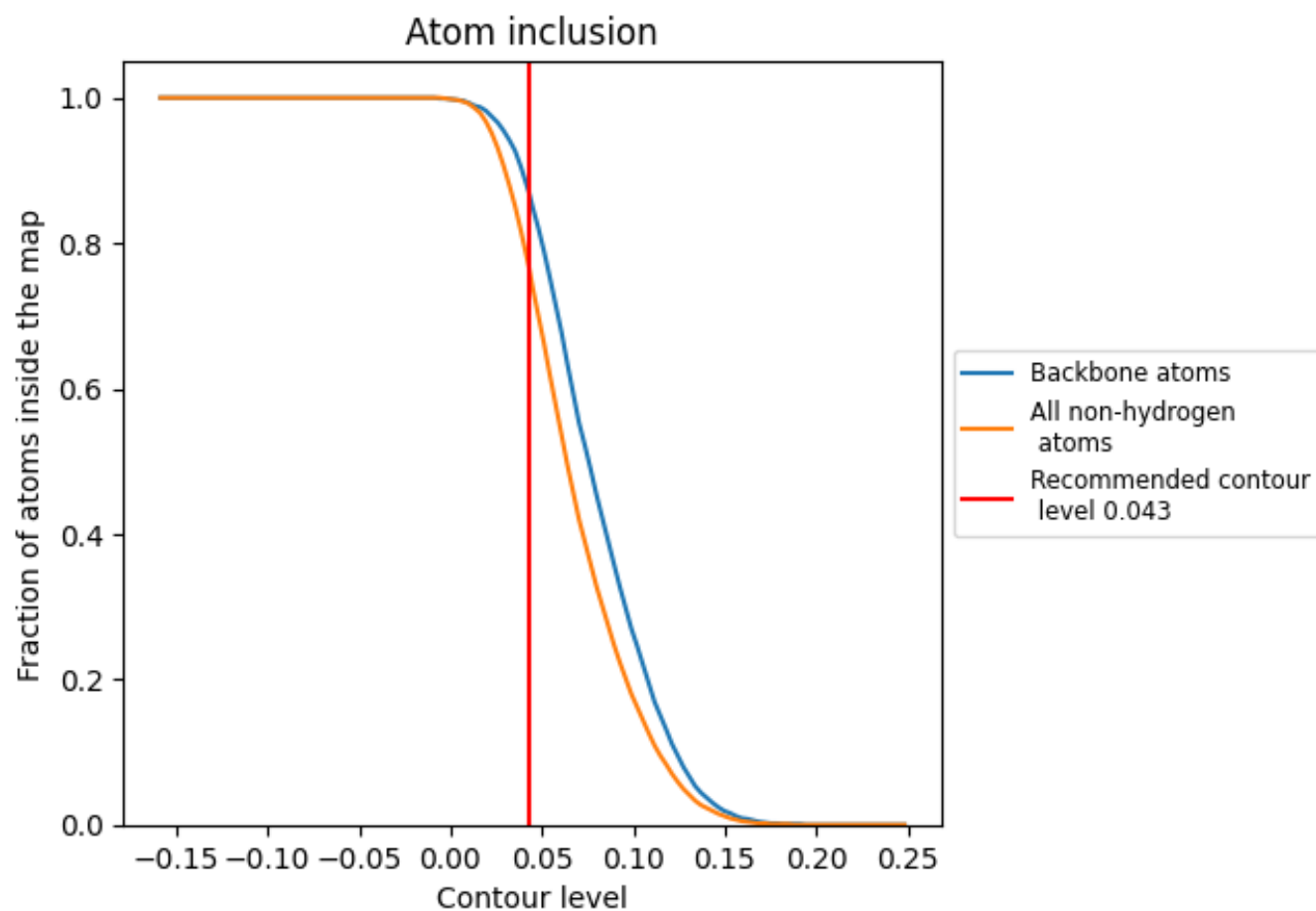
The images above show the model with each residue coloured according to its Q-score. This shows their resolvability in the map with higher Q-score values reflecting better resolvability. Please note: Q-score is calculating the resolvability of atoms, and thus high values are only expected at resolutions at which atoms can be resolved. Low Q-score values may therefore be expected for many entries.

9.3 Atom inclusion mapped to coordinate model [i](#)



The images above show the model with each residue coloured according to its atom inclusion. This shows to what extent they are inside the map at the recommended contour level (0.043).

9.4 Atom inclusion [i](#)



At the recommended contour level, 87% of all backbone atoms, 77% of all non-hydrogen atoms, are inside the map.

9.5 Map-model fit summary ⓘ

The table lists the average atom inclusion at the recommended contour level (0.043) and Q-score for the entire model and for each chain.

Chain	Atom inclusion	Q-score
All	<div></div> 0.7660	<div></div> 0.3660
A	<div></div> 0.7500	<div></div> 0.3700
C	<div></div> 0.5330	<div></div> 0.2610
D	<div></div> 0.8430	<div></div> 0.4160
M	<div></div> 0.7250	<div></div> 0.3160
N	<div></div> 0.8510	<div></div> 0.4030

