



# Full wwPDB X-ray Structure Validation Report ⓘ

Oct 12, 2024 – 10:23 AM EDT

PDB ID : 6CJW  
Title : Crystal Structure of Mnk2-D228G in Complex With Inhibitor  
Authors : Han, Q.  
Deposited on : 2018-02-27  
Resolution : 3.38 Å(reported)

This is a Full wwPDB X-ray Structure Validation Report for a publicly released PDB entry.

We welcome your comments at [validation@mail.wwpdb.org](mailto:validation@mail.wwpdb.org)

A user guide is available at

<https://www.wwpdb.org/validation/2017/XrayValidationReportHelp>

with specific help available everywhere you see the ⓘ symbol.

The types of validation reports are described at

<http://www.wwpdb.org/validation/2017/FAQs#types>.

---

The following versions of software and data (see [references ⓘ](#)) were used in the production of this report:

MolProbity : 4.02b-467  
Mogul : 2022.3.0, CSD as543be (2022)  
Xtriage (Phenix) : 1.20.1  
EDS : 3.0  
Percentile statistics : 20231227.v01 (using entries in the PDB archive December 27th 2023)  
CCP4 : 9.0.003 (Gargrove)  
Density-Fitness : 1.0.11  
Ideal geometry (proteins) : Engh & Huber (2001)  
Ideal geometry (DNA, RNA) : Parkinson et al. (1996)  
Validation Pipeline (wwPDB-VP) : 2.39

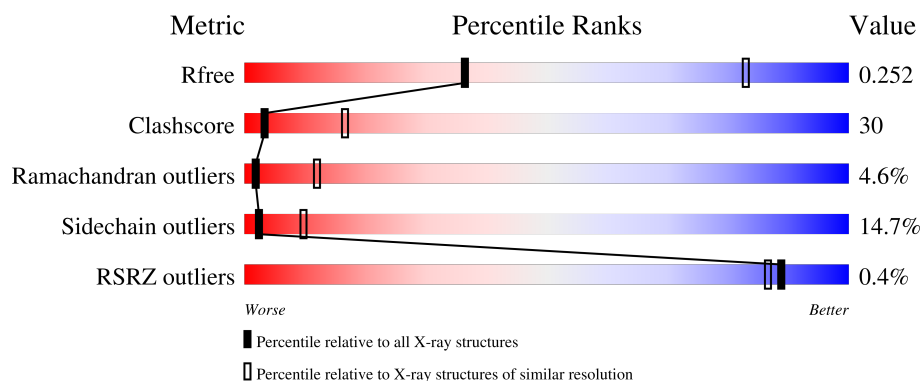
# 1 Overall quality at a glance

The following experimental techniques were used to determine the structure:

*X-RAY DIFFRACTION*

The reported resolution of this entry is 3.38 Å.

Percentile scores (ranging between 0-100) for global validation metrics of the entry are shown in the following graphic. The table shows the number of entries on which the scores are based.



Metric	Whole archive (#Entries)	Similar resolution (#Entries, resolution range(Å))
$R_{free}$	164625	1137 (3.44-3.32)
Clashscore	180529	1165 (3.44-3.32)
Ramachandran outliers	177936	1164 (3.44-3.32)
Sidechain outliers	177891	1164 (3.44-3.32)
RSRZ outliers	164620	1137 (3.44-3.32)

The table below summarises the geometric issues observed across the polymeric chains and their fit to the electron density. The red, orange, yellow and green segments of the lower bar indicate the fraction of residues that contain outliers for  $\geq 3$ , 2, 1 and 0 types of geometric quality criteria respectively. A grey segment represents the fraction of residues that are not modelled. The numeric value for each fraction is indicated below the corresponding segment, with a dot representing fractions  $\leq 5\%$ . The upper red bar (where present) indicates the fraction of residues that have poor fit to the electron density. The numeric value is given above the bar.

Mol	Chain	Length	Quality of chain
1	A	316	

## 2 Entry composition

There are 4 unique types of molecules in this entry. The entry contains 2187 atoms, of which 0 are hydrogens and 0 are deuteriums.

In the tables below, the ZeroOcc column contains the number of atoms modelled with zero occupancy, the AltConf column contains the number of residues with at least one atom in alternate conformation and the Trace column contains the number of residues modelled with at most 2 atoms.

- Molecule 1 is a protein called MAP kinase-interacting serine/threonine-protein kinase 2.

Mol	Chain	Residues	Atoms					ZeroOcc	AltConf	Trace
1	A	270	Total	C	N	O	S	0	0	0
			2150	1364	373	398	15			

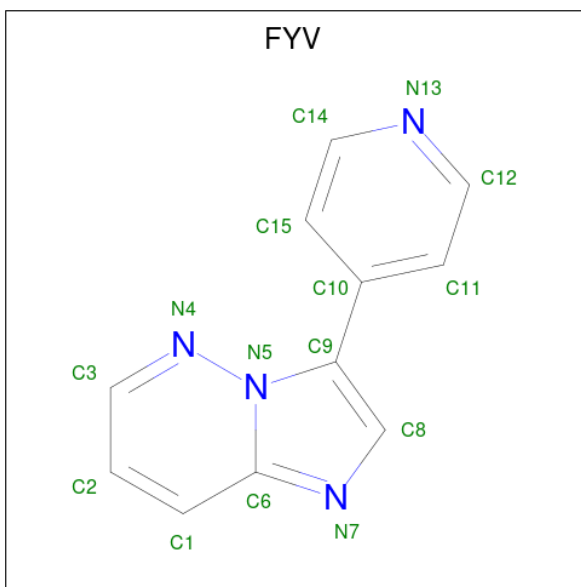
There are 3 discrepancies between the modelled and reference sequences:

Chain	Residue	Modelled	Actual	Comment	Reference
A	70	GLY	-	expression tag	UNP Q9HBH9
A	71	SER	-	expression tag	UNP Q9HBH9
A	228	GLY	ASP	engineered mutation	UNP Q9HBH9

- Molecule 2 is ZINC ION (three-letter code: ZN) (formula: Zn).

Mol	Chain	Residues	Atoms		ZeroOcc	AltConf
2	A	1	Total	Zn	0	0
			1	1		

- Molecule 3 is 3-(pyridin-4-yl)imidazo[1,2-b]pyridazine (three-letter code: FYV) (formula: C<sub>11</sub>H<sub>8</sub>N<sub>4</sub>).



Mol	Chain	Residues	Atoms			ZeroOcc	AltConf
3	A	1	Total	C	N	0	0
			15	11	4		

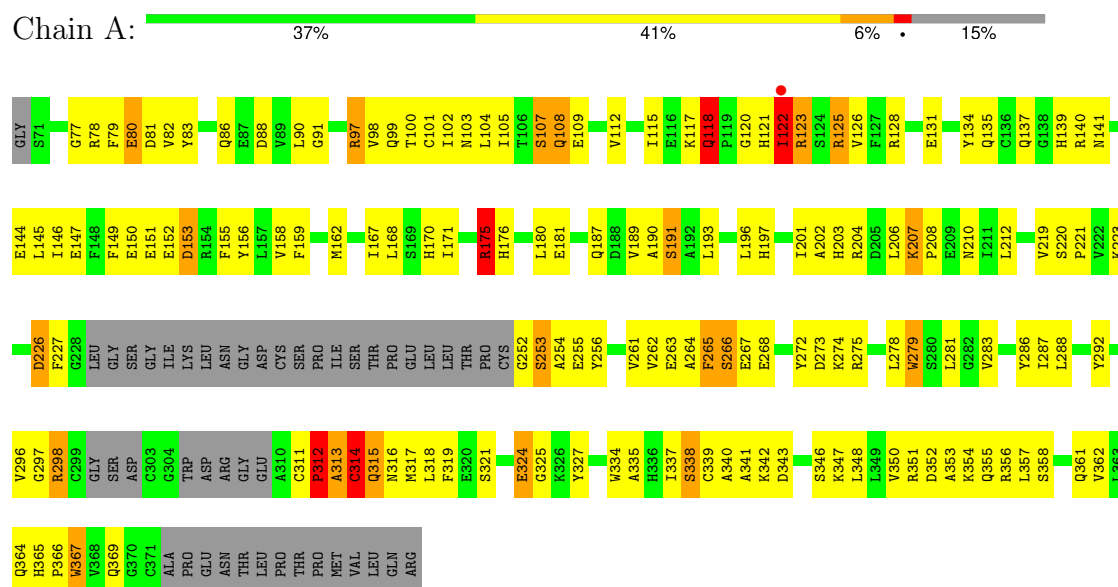
- Molecule 4 is water.

Mol	Chain	Residues	Atoms		ZeroOcc	AltConf
4	A	21	Total	O	0	0
			21	21		

### 3 Residue-property plots

These plots are drawn for all protein, RNA, DNA and oligosaccharide chains in the entry. The first graphic for a chain summarises the proportions of the various outlier classes displayed in the second graphic. The second graphic shows the sequence view annotated by issues in geometry and electron density. Residues are color-coded according to the number of geometric quality criteria for which they contain at least one outlier: green = 0, yellow = 1, orange = 2 and red = 3 or more. A red dot above a residue indicates a poor fit to the electron density ( $RSRZ > 2$ ). Stretches of 2 or more consecutive residues without any outlier are shown as a green connector. Residues present in the sample, but not in the model, are shown in grey.

- Molecule 1: MAP kinase-interacting serine/threonine-protein kinase 2



## 4 Data and refinement statistics

Property	Value	Source
Space group	P 32 2 1	Depositor
Cell constants a, b, c, $\alpha$ , $\beta$ , $\gamma$	105.64Å 105.64Å 73.54Å 90.00° 90.00° 120.00°	Depositor
Resolution (Å)	40.00 – 3.38 40.00 – 3.38	Depositor EDS
% Data completeness (in resolution range)	99.9 (40.00-3.38) 99.9 (40.00-3.38)	Depositor EDS
$R_{merge}$	(Not available)	Depositor
$R_{sym}$	(Not available)	Depositor
$\langle I/\sigma(I) \rangle$ <sup>1</sup>	1.39 (at 3.40Å)	Xtriage
Refinement program	REFMAC 5.6.0117	Depositor
R, $R_{free}$	0.177 , 0.248 0.176 , 0.252	Depositor DCC
$R_{free}$ test set	328 reflections (4.76%)	wwPDB-VP
Wilson B-factor (Å <sup>2</sup> )	109.1	Xtriage
Anisotropy	0.051	Xtriage
Bulk solvent $k_{sol}$ (e/Å <sup>3</sup> ), $B_{sol}$ (Å <sup>2</sup> )	0.30 , 85.4	EDS
L-test for twinning <sup>2</sup>	$\langle  L  \rangle = 0.47$ , $\langle L^2 \rangle = 0.30$	Xtriage
Estimated twinning fraction	0.055 for -h,-k,l	Xtriage
$F_o, F_c$ correlation	0.96	EDS
Total number of atoms	2187	wwPDB-VP
Average B, all atoms (Å <sup>2</sup> )	120.0	wwPDB-VP

Xtriage's analysis on translational NCS is as follows: *The largest off-origin peak in the Patterson function is 6.66% of the height of the origin peak. No significant pseudotranslation is detected.*

<sup>1</sup>Intensities estimated from amplitudes.

<sup>2</sup>Theoretical values of  $\langle |L| \rangle$ ,  $\langle L^2 \rangle$  for acentric reflections are 0.5, 0.333 respectively for untwinned datasets, and 0.375, 0.2 for perfectly twinned datasets.

## 5 Model quality

### 5.1 Standard geometry

Bond lengths and bond angles in the following residue types are not validated in this section: FYV, ZN

The Z score for a bond length (or angle) is the number of standard deviations the observed value is removed from the expected value. A bond length (or angle) with  $|Z| > 5$  is considered an outlier worth inspection. RMSZ is the root-mean-square of all Z scores of the bond lengths (or angles).

Mol	Chain	Bond lengths		Bond angles	
		RMSZ	$\# Z  > 5$	RMSZ	$\# Z  > 5$
1	A	0.76	2/2195 (0.1%)	0.95	4/2959 (0.1%)

Chiral center outliers are detected by calculating the chiral volume of a chiral center and verifying if the center is modelled as a planar moiety or with the opposite hand. A planarity outlier is detected by checking planarity of atoms in a peptide group, atoms in a mainchain group or atoms of a sidechain that are expected to be planar.

Mol	Chain	#Chirality outliers	#Planarity outliers
1	A	0	3

All (2) bond length outliers are listed below:

Mol	Chain	Res	Type	Atoms	Z	Observed(Å)	Ideal(Å)
1	A	279	TRP	CD2-CE2	6.85	1.49	1.41
1	A	367	TRP	CD2-CE2	5.61	1.48	1.41

All (4) bond angle outliers are listed below:

Mol	Chain	Res	Type	Atoms	Z	Observed(°)	Ideal(°)
1	A	314	CYS	CA-CB-SG	8.18	128.72	114.00
1	A	312	PRO	N-CA-C	5.28	125.83	112.10
1	A	77	GLY	N-CA-C	-5.14	100.25	113.10
1	A	118	GLN	N-CA-C	5.06	124.66	111.00

There are no chirality outliers.

All (3) planarity outliers are listed below:

Mol	Chain	Res	Type	Group
1	A	117	LYS	Peptide

*Continued on next page...*

*Continued from previous page...*

Mol	Chain	Res	Type	Group
1	A	122	ILE	Peptide
1	A	312	PRO	Peptide

## 5.2 Too-close contacts

In the following table, the Non-H and H(model) columns list the number of non-hydrogen atoms and hydrogen atoms in the chain respectively. The H(added) column lists the number of hydrogen atoms added and optimized by MolProbity. The Clashes column lists the number of clashes within the asymmetric unit, whereas Symm-Clashes lists symmetry-related clashes.

Mol	Chain	Non-H	H(model)	H(added)	Clashes	Symm-Clashes
1	A	2150	0	2083	125	0
2	A	1	0	0	0	0
3	A	15	0	0	1	0
4	A	21	0	0	0	0
All	All	2187	0	2083	126	0

The all-atom clashscore is defined as the number of clashes found per 1000 atoms (including hydrogen atoms). The all-atom clashscore for this structure is 30.

All (126) close contacts within the same asymmetric unit are listed below, sorted by their clash magnitude.

Atom-1	Atom-2	Interatomic distance (Å)	Clash overlap (Å)
1:A:365:HIS:CD2	1:A:367:TRP:H	1.77	1.02
1:A:286:TYR:HH	1:A:292:TYR:HE2	1.03	0.97
1:A:149:PHE:HB2	1:A:156:TYR:HB2	1.52	0.91
1:A:365:HIS:HD2	1:A:367:TRP:N	1.69	0.89
1:A:108:GLN:HE21	1:A:109:GLU:H	1.16	0.88
1:A:365:HIS:HD2	1:A:367:TRP:H	0.91	0.87
1:A:122:ILE:O	1:A:123:ARG:HB2	1.73	0.86
1:A:139:HIS:HD2	1:A:141:ASN:H	1.25	0.83
1:A:115:ILE:HB	1:A:155:PHE:HB2	1.61	0.82
1:A:312:PRO:N	1:A:313:ALA:HB3	1.95	0.82
1:A:334:TRP:O	1:A:342:LYS:NZ	2.13	0.82
1:A:334:TRP:HA	1:A:337:ILE:HD12	1.63	0.81
1:A:203:HIS:CD2	1:A:227:PHE:HB3	2.15	0.81
1:A:358:SER:O	1:A:362:VAL:HG23	1.81	0.79
1:A:347:LYS:HB3	1:A:357:LEU:CD1	2.14	0.78
1:A:347:LYS:HB3	1:A:357:LEU:HD11	1.66	0.75
1:A:108:GLN:HE21	1:A:109:GLU:N	1.85	0.75

*Continued on next page...*



*Continued from previous page...*

Atom-1	Atom-2	Interatomic distance (Å)	Clash overlap (Å)
1:A:350:VAL:HG11	1:A:355:GLN:HB2	1.68	0.74
1:A:79:PHE:CE1	1:A:83:TYR:HB2	2.22	0.74
1:A:108:GLN:NE2	1:A:109:GLU:H	1.86	0.73
1:A:167:ILE:O	1:A:170:HIS:HB2	1.88	0.73
1:A:312:PRO:HD2	1:A:313:ALA:CB	2.20	0.72
1:A:206:LEU:HD12	1:A:207:LYS:H	1.55	0.71
1:A:82:VAL:HG13	1:A:83:TYR:CE1	2.25	0.71
1:A:321:SER:O	1:A:324:GLU:HB3	1.91	0.71
1:A:348:LEU:O	1:A:356:ARG:HG3	1.91	0.70
1:A:100:THR:HG22	1:A:101:CYS:N	2.05	0.70
1:A:312:PRO:HD2	1:A:313:ALA:HB2	1.73	0.70
1:A:278:LEU:HD12	1:A:362:VAL:HG21	1.72	0.70
1:A:325:GLY:HA3	1:A:351:ARG:HD3	1.73	0.69
1:A:268:GLU:O	1:A:272:TYR:CD1	2.45	0.69
1:A:86:GLN:OE1	1:A:102:ILE:HD13	1.94	0.68
1:A:139:HIS:CD2	1:A:141:ASN:H	2.11	0.67
1:A:350:VAL:CG1	1:A:355:GLN:HB2	2.23	0.67
1:A:167:ILE:HG22	1:A:208:PRO:O	1.95	0.66
1:A:131:GLU:O	1:A:135:GLN:HG3	1.96	0.66
1:A:118:GLN:H	1:A:122:ILE:HG21	1.62	0.65
1:A:108:GLN:HE21	1:A:108:GLN:HA	1.60	0.64
1:A:86:GLN:CD	1:A:102:ILE:HD13	2.18	0.63
1:A:275:ARG:HA	1:A:278:LEU:HD23	1.81	0.63
1:A:82:VAL:HG13	1:A:83:TYR:CD1	2.33	0.62
1:A:88:ASP:O	1:A:99:GLN:HG2	1.98	0.62
1:A:118:GLN:OE1	1:A:118:GLN:HA	1.99	0.62
1:A:315:GLN:CG	1:A:319:PHE:HE1	2.13	0.61
1:A:181:GLU:HB3	1:A:219:VAL:HG11	1.82	0.61
1:A:204:ARG:HH12	1:A:273:ASP:HB2	1.64	0.61
1:A:283:VAL:O	1:A:287:ILE:HG13	2.00	0.60
1:A:327:TYR:OH	1:A:346:SER:HA	2.02	0.60
1:A:312:PRO:CD	1:A:313:ALA:CB	2.80	0.59
1:A:108:GLN:NE2	1:A:108:GLN:HA	2.17	0.59
1:A:207:LYS:HG2	1:A:210:ASN:HD22	1.69	0.58
3:A:402:FYV:C11	3:A:402:FYV:N4	2.65	0.58
1:A:347:LYS:O	1:A:357:LEU:HD13	2.03	0.58
1:A:210:ASN:OD1	1:A:226:ASP:HB3	2.03	0.58
1:A:298:ARG:HA	1:A:314:CYS:HB3	1.85	0.58
1:A:312:PRO:CD	1:A:313:ALA:HB3	2.32	0.58
1:A:100:THR:CG2	1:A:101:CYS:N	2.66	0.58
1:A:315:GLN:HG2	1:A:319:PHE:HE1	1.68	0.58

*Continued on next page...*

*Continued from previous page...*

Atom-1	Atom-2	Interatomic distance (Å)	Clash overlap (Å)
1:A:139:HIS:HD2	1:A:141:ASN:N	1.97	0.57
1:A:206:LEU:HD12	1:A:207:LYS:N	2.21	0.56
1:A:350:VAL:HG12	1:A:352:ASP:O	2.06	0.55
1:A:108:GLN:HE21	1:A:108:GLN:CA	2.20	0.53
1:A:352:ASP:OD2	1:A:354:LYS:HD2	2.09	0.53
1:A:118:GLN:H	1:A:122:ILE:CG2	2.22	0.53
1:A:347:LYS:HB3	1:A:357:LEU:HD13	1.90	0.53
1:A:168:LEU:HA	1:A:171:ILE:HD12	1.90	0.53
1:A:343:ASP:OD2	1:A:365:HIS:HE1	1.93	0.52
1:A:187:GLN:O	1:A:191:SER:OG	2.27	0.52
1:A:315:GLN:O	1:A:318:LEU:HB3	2.10	0.52
1:A:123:ARG:C	1:A:125:ARG:N	2.64	0.51
1:A:263:GLU:O	1:A:266:SER:HB3	2.12	0.50
1:A:131:GLU:O	1:A:134:TYR:HB3	2.12	0.49
1:A:79:PHE:O	1:A:81:ASP:N	2.46	0.49
1:A:146:ILE:HG22	1:A:147:GLU:N	2.27	0.49
1:A:252:GLY:O	1:A:254:ALA:N	2.40	0.48
1:A:350:VAL:HG11	1:A:355:GLN:CB	2.40	0.48
1:A:364:GLN:O	1:A:365:HIS:C	2.52	0.48
1:A:162:MET:CE	1:A:223:LYS:HD2	2.44	0.48
1:A:279:TRP:C	1:A:279:TRP:CD1	2.87	0.48
1:A:312:PRO:N	1:A:313:ALA:CB	2.73	0.48
1:A:123:ARG:NH2	1:A:150:GLU:OE2	2.43	0.48
1:A:197:HIS:HD2	1:A:201:ILE:O	1.96	0.48
1:A:202:ALA:HB2	1:A:274:LYS:HG3	1.96	0.48
1:A:121:HIS:O	1:A:122:ILE:C	2.52	0.47
1:A:281:LEU:HD12	1:A:281:LEU:O	2.13	0.47
1:A:152:GLU:O	1:A:153:ASP:HB3	2.15	0.47
1:A:347:LYS:CD	1:A:357:LEU:HD11	2.44	0.47
1:A:312:PRO:CD	1:A:313:ALA:HB2	2.43	0.47
1:A:78:ARG:O	1:A:81:ASP:HB2	2.14	0.47
1:A:278:LEU:HD22	1:A:278:LEU:N	2.30	0.47
1:A:312:PRO:O	1:A:315:GLN:HB3	2.15	0.47
1:A:100:THR:CG2	1:A:101:CYS:H	2.28	0.46
1:A:264:ALA:C	1:A:266:SER:H	2.19	0.46
1:A:103:ASN:O	1:A:107:SER:N	2.48	0.46
1:A:168:LEU:HB2	1:A:208:PRO:HB2	1.98	0.46
1:A:297:GLY:HA3	1:A:317:MET:HB2	1.98	0.46
1:A:196:LEU:HA	1:A:196:LEU:HD23	1.57	0.45
1:A:108:GLN:NE2	1:A:108:GLN:CA	2.80	0.45
1:A:334:TRP:O	1:A:335:ALA:C	2.55	0.45

*Continued on next page...*

*Continued from previous page...*

Atom-1	Atom-2	Interatomic distance (Å)	Clash overlap (Å)
1:A:159:PHE:CD1	1:A:159:PHE:N	2.85	0.44
1:A:187:GLN:O	1:A:190:ALA:HB3	2.17	0.44
1:A:357:LEU:HA	1:A:361:GLN:OE1	2.18	0.44
1:A:112:VAL:HB	1:A:158:VAL:HG22	2.00	0.44
1:A:369:GLN:HE21	1:A:369:GLN:HA	1.83	0.44
1:A:175:ARG:NE	1:A:175:ARG:HA	2.32	0.43
1:A:100:THR:O	1:A:101:CYS:HB3	2.17	0.43
1:A:365:HIS:HA	1:A:366:PRO:HD2	1.89	0.43
1:A:120:GLY:O	1:A:122:ILE:N	2.45	0.42
1:A:97:ARG:HG2	1:A:99:GLN:OE1	2.19	0.42
1:A:123:ARG:C	1:A:125:ARG:H	2.23	0.42
1:A:122:ILE:O	1:A:123:ARG:CB	2.55	0.41
1:A:162:MET:HE2	1:A:223:LYS:HB2	2.01	0.41
1:A:278:LEU:HG	1:A:357:LEU:O	2.19	0.41
1:A:315:GLN:HG3	1:A:319:PHE:CE1	2.55	0.41
1:A:255:GLU:HG3	1:A:256:TYR:CE2	2.55	0.41
1:A:100:THR:HG22	1:A:101:CYS:H	1.81	0.41
1:A:137:GLN:OE1	1:A:144:GLU:HA	2.20	0.41
1:A:90:LEU:HD12	1:A:98:VAL:HG12	2.02	0.41
1:A:176:HIS:HB2	1:A:288:LEU:O	2.21	0.41
1:A:189:VAL:HG12	1:A:193:LEU:CD1	2.51	0.41
1:A:197:HIS:CD2	1:A:274:LYS:HG2	2.56	0.41
1:A:315:GLN:HG3	1:A:319:PHE:HE1	1.84	0.41
1:A:139:HIS:CD2	1:A:140:ARG:N	2.88	0.41
1:A:340:ALA:HA	1:A:343:ASP:HB3	2.02	0.41
1:A:91:GLY:O	1:A:98:VAL:N	2.50	0.40
1:A:352:ASP:OD1	1:A:353:ALA:N	2.55	0.40

There are no symmetry-related clashes.

## 5.3 Torsion angles ⓘ

### 5.3.1 Protein backbone ⓘ

In the following table, the Percentiles column shows the percent Ramachandran outliers of the chain as a percentile score with respect to all X-ray entries followed by that with respect to entries of similar resolution.

The Analysed column shows the number of residues for which the backbone conformation was analysed, and the total number of residues.

Mol	Chain	Analysed	Favoured	Allowed	Outliers	Percentiles	
1	A	262/316 (83%)	213 (81%)	37 (14%)	12 (5%)	2	12

All (12) Ramachandran outliers are listed below:

Mol	Chain	Res	Type
1	A	122	ILE
1	A	123	ARG
1	A	253	SER
1	A	265	PHE
1	A	175	ARG
1	A	313	ALA
1	A	80	GLU
1	A	341	ALA
1	A	267	GLU
1	A	324	GLU
1	A	338	SER
1	A	312	PRO

### 5.3.2 Protein sidechains ⓘ

In the following table, the Percentiles column shows the percent sidechain outliers of the chain as a percentile score with respect to all X-ray entries followed by that with respect to entries of similar resolution.

The Analysed column shows the number of residues for which the sidechain conformation was analysed, and the total number of residues.

Mol	Chain	Analysed	Rotameric	Outliers	Percentiles	
1	A	232/274 (85%)	198 (85%)	34 (15%)	2	10

All (34) residues with a non-rotameric sidechain are listed below:

Mol	Chain	Res	Type
1	A	80	GLU
1	A	97	ARG
1	A	104	LEU
1	A	105	ILE
1	A	107	SER
1	A	108	GLN
1	A	118	GLN
1	A	125	ARG
1	A	126	VAL

*Continued on next page...*

*Continued from previous page...*

Mol	Chain	Res	Type
1	A	128	ARG
1	A	145	LEU
1	A	151	GLU
1	A	153	ASP
1	A	175	ARG
1	A	180	LEU
1	A	191	SER
1	A	207	LYS
1	A	212	LEU
1	A	220	SER
1	A	221	PRO
1	A	226	ASP
1	A	253	SER
1	A	261	VAL
1	A	262	VAL
1	A	265	PHE
1	A	266	SER
1	A	296	VAL
1	A	298	ARG
1	A	311	CYS
1	A	314	CYS
1	A	315	GLN
1	A	316	ASN
1	A	338	SER
1	A	339	CYS

Sometimes sidechains can be flipped to improve hydrogen bonding and reduce clashes. All (9) such sidechains are listed below:

Mol	Chain	Res	Type
1	A	108	GLN
1	A	121	HIS
1	A	139	HIS
1	A	197	HIS
1	A	315	GLN
1	A	316	ASN
1	A	364	GLN
1	A	365	HIS
1	A	369	GLN

### 5.3.3 RNA [i](#)

There are no RNA molecules in this entry.

## 5.4 Non-standard residues in protein, DNA, RNA chains [i](#)

There are no non-standard protein/DNA/RNA residues in this entry.

## 5.5 Carbohydrates [i](#)

There are no oligosaccharides in this entry.

## 5.6 Ligand geometry [i](#)

Of 2 ligands modelled in this entry, 1 is monoatomic - leaving 1 for Mogul analysis.

In the following table, the Counts columns list the number of bonds (or angles) for which Mogul statistics could be retrieved, the number of bonds (or angles) that are observed in the model and the number of bonds (or angles) that are defined in the Chemical Component Dictionary. The Link column lists molecule types, if any, to which the group is linked. The Z score for a bond length (or angle) is the number of standard deviations the observed value is removed from the expected value. A bond length (or angle) with  $|Z| > 2$  is considered an outlier worth inspection. RMSZ is the root-mean-square of all Z scores of the bond lengths (or angles).

Mol	Type	Chain	Res	Link	Bond lengths			Bond angles		
					Counts	RMSZ	# Z  > 2	Counts	RMSZ	# Z  > 2
3	FYV	A	402	-	14,17,17	1.57	1 (7%)	15,23,23	1.97	5 (33%)

In the following table, the Chirals column lists the number of chiral outliers, the number of chiral centers analysed, the number of these observed in the model and the number defined in the Chemical Component Dictionary. Similar counts are reported in the Torsion and Rings columns. '-' means no outliers of that kind were identified.

Mol	Type	Chain	Res	Link	Chirals	Torsions	Rings
3	FYV	A	402	-	-	0/4/4/4	0/3/3/3

All (1) bond length outliers are listed below:

Mol	Chain	Res	Type	Atoms	Z	Observed(Å)	Ideal(Å)
3	A	402	FYV	C6-N7	5.05	1.38	1.33

All (5) bond angle outliers are listed below:

Mol	Chain	Res	Type	Atoms	Z	Observed(°)	Ideal(°)
3	A	402	FYV	C10-C9-N5	-3.53	117.23	123.62
3	A	402	FYV	C8-C9-C10	3.34	132.67	128.62
3	A	402	FYV	C12-N13-C14	2.54	122.67	116.86
3	A	402	FYV	C9-C8-N7	-2.13	104.75	109.11
3	A	402	FYV	C11-C12-N13	-2.11	120.00	123.60

There are no chirality outliers.

There are no torsion outliers.

There are no ring outliers.

1 monomer is involved in 1 short contact:

Mol	Chain	Res	Type	Clashes	Symm-Clashes
3	A	402	FYV	1	0

## 5.7 Other polymers [i](#)

There are no such residues in this entry.

## 5.8 Polymer linkage issues [i](#)

There are no chain breaks in this entry.

## 6 Fit of model and data [i](#)

### 6.1 Protein, DNA and RNA chains [i](#)

In the following table, the column labelled ‘#RSRZ > 2’ contains the number (and percentage) of RSRZ outliers, followed by percent RSRZ outliers for the chain as percentile scores relative to all X-ray entries and entries of similar resolution. The OWAB column contains the minimum, median, 95<sup>th</sup> percentile and maximum values of the occupancy-weighted average B-factor per residue. The column labelled ‘Q < 0.9’ lists the number of (and percentage) of residues with an average occupancy less than 0.9.

Mol	Chain	Analysed	<RSRZ>	#RSRZ>2	OWAB(Å <sup>2</sup> )	Q<0.9
1	A	270/316 (85%)	-0.94	1 (0%) 89 86	79, 116, 169, 208	0

All (1) RSRZ outliers are listed below:

Mol	Chain	Res	Type	RSRZ
1	A	122	ILE	2.1

### 6.2 Non-standard residues in protein, DNA, RNA chains [i](#)

There are no non-standard protein/DNA/RNA residues in this entry.

### 6.3 Carbohydrates [i](#)

There are no monosaccharides in this entry.

### 6.4 Ligands [i](#)

In the following table, the Atoms column lists the number of modelled atoms in the group and the number defined in the chemical component dictionary. The B-factors column lists the minimum, median, 95<sup>th</sup> percentile and maximum values of B factors of atoms in the group. The column labelled ‘Q < 0.9’ lists the number of atoms with occupancy less than 0.9.

Mol	Type	Chain	Res	Atoms	RSCC	RSR	B-factors(Å <sup>2</sup> )	Q<0.9
2	ZN	A	401	1/1	0.95	0.04	232,232,232,232	0
3	FYV	A	402	15/15	0.98	0.06	91,105,114,118	0

### 6.5 Other polymers [i](#)

There are no such residues in this entry.