



wwPDB EM Validation Summary Report ⓘ

Jun 2, 2024 – 01:50 PM EDT

PDB ID : 8DG5
EMDB ID : EMD-27416
Title : Structural Basis of MicroRNA Biogenesis by Dicer-1 and Its Partner Protein
Loqs-PB - complex IIb
Authors : Jouravleva, K.; Golovenko, D.; Demo, G.; Dutcher, R.C.; Tanaka Hall, T.M.;
Zamore, P.D.; Korostelev, A.A.
Deposited on : 2022-06-23
Resolution : 3.26 Å(reported)

This is a wwPDB EM Validation Summary Report for a publicly released PDB entry.

We welcome your comments at validation@mail.wwpdb.org

A user guide is available at

<https://www.wwpdb.org/validation/2017/EMValidationReportHelp>
with specific help available everywhere you see the ⓘ symbol.

The types of validation reports are described at

<http://www.wwpdb.org/validation/2017/FAQs#types>.

The following versions of software and data (see [references ⓘ](#)) were used in the production of this report:

EMDB validation analysis : 0.0.1.dev92
Mogul : 1.8.5 (274361), CSD as541be (2020)
MolProbity : 4.02b-467
buster-report : 1.1.7 (2018)
Percentile statistics : 20191225.v01 (using entries in the PDB archive December 25th 2019)
MapQ : 1.9.13
Ideal geometry (proteins) : Engh & Huber (2001)
Ideal geometry (DNA, RNA) : Parkinson et al. (1996)
Validation Pipeline (wwPDB-VP) : 2.36.2

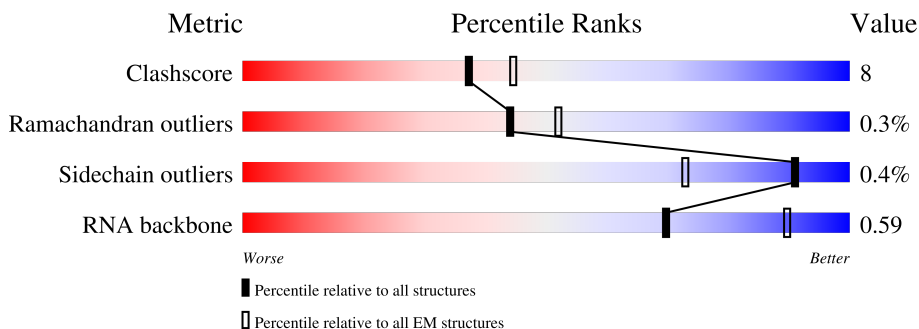
1 Overall quality at a glance

The following experimental techniques were used to determine the structure:

ELECTRON MICROSCOPY


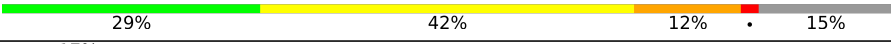
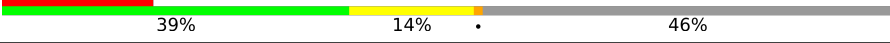
The reported resolution of this entry is 3.26 Å.

Percentile scores (ranging between 0-100) for global validation metrics of the entry are shown in the following graphic. The table shows the number of entries on which the scores are based.



Metric	Whole archive (#Entries)	EM structures (#Entries)
Clashscore	158937	4297
Ramachandran outliers	154571	4023
Sidechain outliers	154315	3826
RNA backbone	4643	859

The table below summarises the geometric issues observed across the polymeric chains and their fit to the map. The red, orange, yellow and green segments of the bar indicate the fraction of residues that contain outliers for ≥ 3 , 2, 1 and 0 types of geometric quality criteria respectively. A grey segment represents the fraction of residues that are not modelled. The numeric value for each fraction is indicated below the corresponding segment, with a dot representing fractions $\leq 5\%$. The upper red bar (where present) indicates the fraction of residues that have poor fit to the EM map (all-atom inclusion $< 40\%$). The numeric value is given above the bar.

Mol	Chain	Length	Quality of chain
1	A	2249	
2	E	59	
3	K	465	

2 Entry composition

There are 5 unique types of molecules in this entry. The entry contains 16269 atoms, of which 0 are hydrogens and 0 are deuteriums.

In the tables below, the AltConf column contains the number of residues with at least one atom in alternate conformation and the Trace column contains the number of residues modelled with at most 2 atoms.

- Molecule 1 is a protein called Endoribonuclease Dcr-1.

Mol	Chain	Residues	Atoms					AltConf	Trace
1	A	1635	Total	C	N	O	S	0	0
			13175	8370	2314	2416	75		

There are 9 discrepancies between the modelled and reference sequences:

Chain	Residue	Modelled	Actual	Comment	Reference
A	134	ARG	SER	conflict	UNP Q9VCU9
A	205	SER	THR	conflict	UNP Q9VCU9
A	416	LEU	MET	conflict	UNP Q9VCU9
A	702	SER	ALA	conflict	UNP Q9VCU9
A	796	CYS	SER	conflict	UNP Q9VCU9
A	1332	VAL	ALA	conflict	UNP Q9VCU9
A	1338	ALA	PRO	conflict	UNP Q9VCU9
A	1339	ILE	THR	conflict	UNP Q9VCU9
A	1345	ILE	LEU	conflict	UNP Q9VCU9

- Molecule 2 is a RNA chain called RNA (60-MER).

Mol	Chain	Residues	Atoms					AltConf	Trace
2	E	50	Total	C	N	O	P	0	0
			1057	474	182	351	50		

- Molecule 3 is a protein called Loquacious, isoform B.

Mol	Chain	Residues	Atoms					AltConf	Trace
3	K	252	Total	C	N	O	S	0	0
			2005	1271	361	360	13		

- Molecule 4 is MAGNESIUM ION (three-letter code: MG) (formula: Mg).

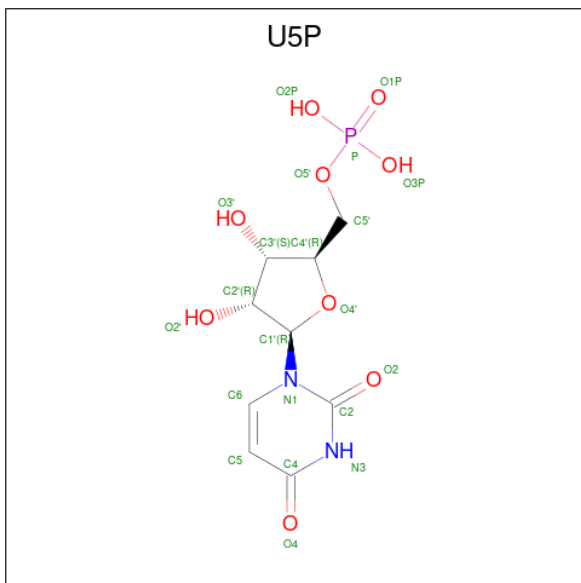
Mol	Chain	Residues	Atoms		AltConf
4	A	3	Total	Mg	0
			3	3	

Continued on next page...

Continued from previous page...

Mol	Chain	Residues	Atoms		AltConf
4	E	8	Total	Mg	0
			8	8	

- Molecule 5 is URIDINE-5'-MONOPHOSPHATE (three-letter code: U5P) (formula: $C_9H_{13}N_2O_9P$).

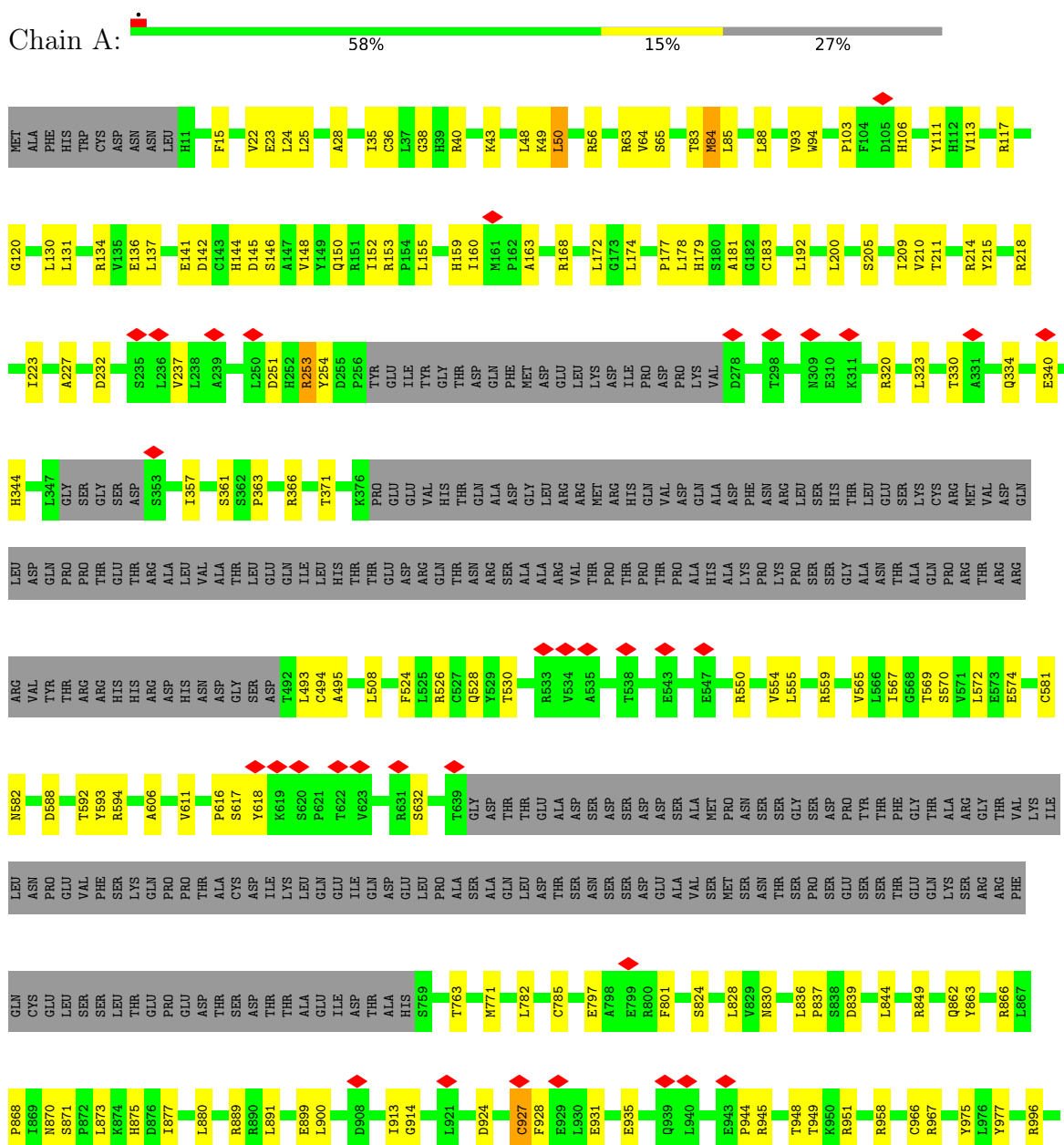


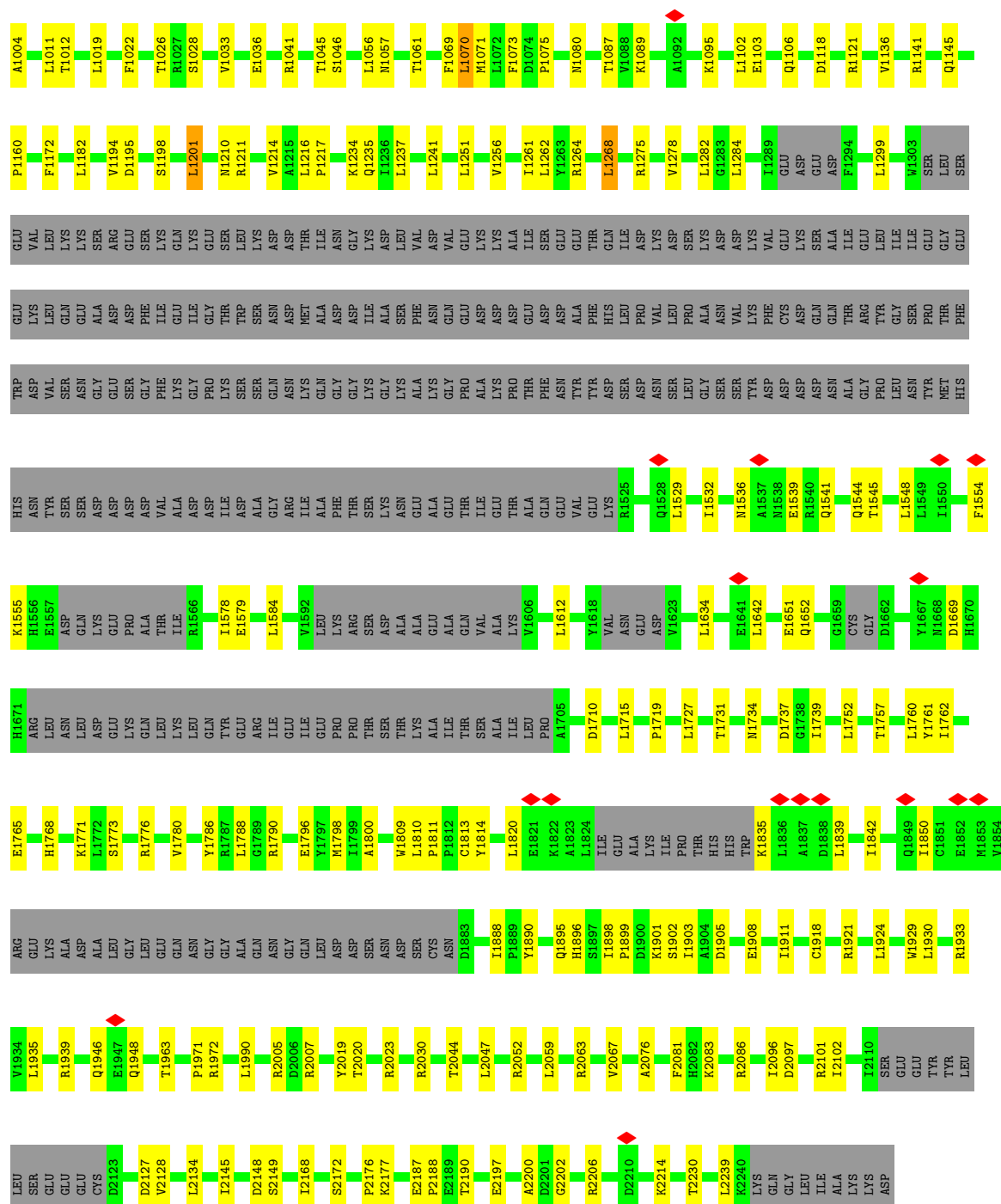
Mol	Chain	Residues	Atoms					AltConf
5	E	1	Total	C	N	O	P	0
			21	9	2	9	1	

3 Residue-property plots

These plots are drawn for all protein, RNA, DNA and oligosaccharide chains in the entry. The first graphic for a chain summarises the proportions of the various outlier classes displayed in the second graphic. The second graphic shows the sequence view annotated by issues in geometry and atom inclusion in map density. Residues are color-coded according to the number of geometric quality criteria for which they contain at least one outlier: green = 0, yellow = 1, orange = 2 and red = 3 or more. A red diamond above a residue indicates a poor fit to the EM map for this residue (all-atom inclusion < 40%). Stretches of 2 or more consecutive residues without any outlier are shown as a green connector. Residues present in the sample, but not in the model, are shown in grey.

• Molecule 1: Endoribonuclease Dcr-1



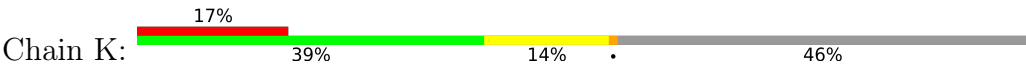


• Molecule 2: RNA (60-MER)

Chain E: 29% 42% 12% 15%



• Molecule 3: Loquacious, isoform B



PRO	ASP	GLN	GLU	ASN	PHE	HIS	GLY	SER	SER	LEU	PRO	GLU	GLN	HIS	ILE	GLN	PRO	GLN	GLN	ALA	SER	PRO	ASN	PRO	VAL	GLN	THR	GLY	PHE	ALA	PRO	ARG	ARG	HIS	TYR	ASN	LEU	VAL	GLY	GLY	ASN	ASN	ALA	VAL	SER	GLY	SER	PRO	VAL	LYS	GLY	ALA					
PRO	LEU	GLY	GLN	ARG	VAL	THR	GLY	ASP	ALA	ASN	LEU	GLY	LYS	ILE	SER	GLN	SER	PRO	GLY	GLY	ALA	GLN	LEU	GLN	LEU	SER	VAL	GLY	ASP	R168	F169	R170	LEU	ALA	GLY	GLY	SER	SER	ASN	GLY	VAL	GLY	LEU	VAL	GLY	GLY	PRO	PRO	GLU	ALA	LEU						
LYS	PHE	VAL	SER	GLU	THR	THR	ASP	ALA	ASN	GLY	LEU	LYS	A132	T135	P136	V137	S138	I139	T149	T150	E154	I155	V156	Q157	I158	E159	I162	P165	R168	F169	R170	LEU	ALA	GLY	GLY	SER	SER	ASN	GLY	VAL	GLY	LEU	VAL	GLY	GLY	PRO	PRO	GLU	ALA	LEU							
ALA	GLY	PRO	SER	VAL	THR	THR	GLY	LEU	THR	VAL	ALA	GLY	GLY	SER	GLY	GLY	ASP	ASN	ALA	ASN	ALA	THR	GLY	GLY	GLY	ASP	ALA	SER	ASP	N250	P251	I252	G253	W254	L255	Q256	E257	M258	C259	M260	Q261	R262	R263	W264	P265	P266	P267	S268	Y269	E270	T271	E272	T273	E274	V275	G276	
L277	P278	H279	E280	R281	L282	F283	T284	I285	A286	C287	S288	I289	L290	N291	Y292	R293	E294	M295	C296	K297	G298	K301	K302	T303	A304	K305	R306	L307	A308	A309	H310	R311	M312	W313	M314	R315	L316	Q317	E318	T319	P320	ILE	ASP	SER	GLY	LYS	ILE	SER	ASP	SER	ILE	CYS	GLY	GLU	LEU	GLY	GLU
PRO	ARG	SER	GLU	ASN	TYR	GLY	GLU	LEU	LYS	ASP	ILE	SER	VAL	PRO	THR	LEU	THR	T358	Q359	M362	K363	V364	S365	Q366	K369	M373	A374	T375	L380	K381	L382	Q383	K384	N390	K391	Y394	I395	K396	L397	I401	E404	T410	T414	E415	E416	K417	T418										
F423	Q424	C425	L426	V427	Q428	V436	C437	S440	D446	R449	A455	Y458	L459	K460	T461	M462	K465																																								

4 Experimental information

Property	Value	Source
EM reconstruction method	SINGLE PARTICLE	Depositor
Imposed symmetry	POINT, Not provided	
Number of particles used	185002	Depositor
Resolution determination method	FSC 0.143 CUT-OFF	Depositor
CTF correction method	NONE	Depositor
Microscope	FEI TITAN KRIOS	Depositor
Voltage (kV)	300	Depositor
Electron dose ($e^-/\text{\AA}^2$)	66.3	Depositor
Minimum defocus (nm)	500	Depositor
Maximum defocus (nm)	3500	Depositor
Magnification	Not provided	
Image detector	GATAN K3 (6k x 4k)	Depositor
Maximum map value	2.481	Depositor
Minimum map value	-1.413	Depositor
Average map value	0.000	Depositor
Map value standard deviation	0.039	Depositor
Recommended contour level	0.2	Depositor
Map size (\AA)	360.22, 360.22, 360.22	wwPDB
Map dimensions	434, 434, 434	wwPDB
Map angles ($^\circ$)	90.0, 90.0, 90.0	wwPDB
Pixel spacing (\AA)	0.83, 0.83, 0.83	Depositor

5 Model quality [i](#)

5.1 Standard geometry [i](#)

Bond lengths and bond angles in the following residue types are not validated in this section: MG, U5P

The Z score for a bond length (or angle) is the number of standard deviations the observed value is removed from the expected value. A bond length (or angle) with $|Z| > 5$ is considered an outlier worth inspection. RMSZ is the root-mean-square of all Z scores of the bond lengths (or angles).

Mol	Chain	Bond lengths		Bond angles	
		RMSZ	# Z >5	RMSZ	# Z >5
1	A	0.41	2/13473 (0.0%)	0.72	14/18274 (0.1%)
2	E	0.57	0/1179	1.19	7/1830 (0.4%)
3	K	0.52	3/2041 (0.1%)	1.03	9/2738 (0.3%)
All	All	0.44	5/16693 (0.0%)	0.81	30/22842 (0.1%)

Chiral center outliers are detected by calculating the chiral volume of a chiral center and verifying if the center is modelled as a planar moiety or with the opposite hand. A planarity outlier is detected by checking planarity of atoms in a peptide group, atoms in a mainchain group or atoms of a sidechain that are expected to be planar.

Mol	Chain	#Chirality outliers	#Planarity outliers
1	A	0	2
3	K	0	1
All	All	0	3

All (5) bond length outliers are listed below:

Mol	Chain	Res	Type	Atoms	Z	Observed(Å)	Ideal(Å)
1	A	2188	PRO	CB-CG	15.71	2.28	1.50
1	A	2188	PRO	CG-CD	-12.46	1.09	1.50
3	K	251	PRO	CG-CD	-12.36	1.09	1.50
3	K	165	PRO	CG-CD	-11.44	1.12	1.50
3	K	251	PRO	CB-CG	-5.78	1.21	1.50

The worst 5 of 30 bond angle outliers are listed below:

Mol	Chain	Res	Type	Atoms	Z	Observed(°)	Ideal(°)
1	A	2188	PRO	CB-CG-CD	-20.81	25.34	106.50
3	K	251	PRO	N-CD-CG	-20.39	72.61	103.20
1	A	2188	PRO	CA-N-CD	-20.16	83.27	111.50

Continued on next page...

Continued from previous page...

Mol	Chain	Res	Type	Atoms	Z	Observed(°)	Ideal(°)
3	K	251	PRO	CB-CG-CD	18.83	179.94	106.50
3	K	165	PRO	N-CD-CG	-16.83	77.96	103.20

There are no chirality outliers.

All (3) planarity outliers are listed below:

Mol	Chain	Res	Type	Group
1	A	606	ALA	Peptide
1	A	862	GLN	Peptide
3	K	250	ASN	Peptide

5.2 Too-close contacts

In the following table, the Non-H and H(model) columns list the number of non-hydrogen atoms and hydrogen atoms in the chain respectively. The H(added) column lists the number of hydrogen atoms added and optimized by MolProbity. The Clashes column lists the number of clashes within the asymmetric unit, whereas Symm-Clashes lists symmetry-related clashes.

Mol	Chain	Non-H	H(model)	H(added)	Clashes	Symm-Clashes
1	A	13175	0	13105	215	0
2	E	1057	0	536	27	0
3	K	2005	0	2065	50	0
4	A	3	0	0	0	0
4	E	8	0	0	0	0
5	E	21	0	10	1	0
All	All	16269	0	15716	261	0

The all-atom clashscore is defined as the number of clashes found per 1000 atoms (including hydrogen atoms). The all-atom clashscore for this structure is 8.

The worst 5 of 261 close contacts within the same asymmetric unit are listed below, sorted by their clash magnitude.

Atom-1	Atom-2	Interatomic distance (Å)	Clash overlap (Å)
1:A:975:TYR:HB2	1:A:1012:THR:O	1.76	0.86
1:A:1536:ASN:O	1:A:1539:GLU:HB3	1.79	0.82
2:E:16:U:H3	2:E:43:A:H61	1.32	0.78
1:A:837:PRO:HG2	1:A:870:ASN:HD21	1.55	0.71
1:A:495:ALA:HB3	1:A:565:VAL:HG12	1.77	0.66

There are no symmetry-related clashes.

5.3 Torsion angles [i](#)

5.3.1 Protein backbone [i](#)

In the following table, the Percentiles column shows the percent Ramachandran outliers of the chain as a percentile score with respect to all PDB entries followed by that with respect to all EM entries.

The Analysed column shows the number of residues for which the backbone conformation was analysed, and the total number of residues.

Mol	Chain	Analysed	Favoured	Allowed	Outliers	Percentiles	
1	A	1605/2249 (71%)	1462 (91%)	140 (9%)	3 (0%)	47	77
3	K	244/465 (52%)	234 (96%)	7 (3%)	3 (1%)	13	43
All	All	1849/2714 (68%)	1696 (92%)	147 (8%)	6 (0%)	44	72

5 of 6 Ramachandran outliers are listed below:

Mol	Chain	Res	Type
1	A	927	CYS
3	K	251	PRO
3	K	174	LYS
3	K	149	ILE
1	A	2177	LYS

5.3.2 Protein sidechains [i](#)

In the following table, the Percentiles column shows the percent sidechain outliers of the chain as a percentile score with respect to all PDB entries followed by that with respect to all EM entries.

The Analysed column shows the number of residues for which the sidechain conformation was analysed, and the total number of residues.

Mol	Chain	Analysed	Rotameric	Outliers	Percentiles	
1	A	1457/1994 (73%)	1453 (100%)	4 (0%)	92	96
3	K	216/380 (57%)	213 (99%)	3 (1%)	67	81
All	All	1673/2374 (70%)	1666 (100%)	7 (0%)	91	94

5 of 7 residues with a non-rotameric sidechain are listed below:

Mol	Chain	Res	Type
1	A	1790	ARG

Continued on next page...

Continued from previous page...

Mol	Chain	Res	Type
3	K	302	LYS
3	K	396	LYS
3	K	369	LYS
1	A	1041	ARG

Sometimes sidechains can be flipped to improve hydrogen bonding and reduce clashes. All (1) such sidechains are listed below:

Mol	Chain	Res	Type
1	A	1541	GLN

5.3.3 RNA [i](#)

Mol	Chain	Analysed	Backbone Outliers	Pucker Outliers
2	E	48/59 (81%)	10 (20%)	0

5 of 10 RNA backbone outliers are listed below:

Mol	Chain	Res	Type
2	E	6	U
2	E	10	A
2	E	12	G
2	E	19	A
2	E	23	G

There are no RNA pucker outliers to report.

5.4 Non-standard residues in protein, DNA, RNA chains [i](#)

There are no non-standard protein/DNA/RNA residues in this entry.

5.5 Carbohydrates [i](#)

There are no monosaccharides in this entry.

5.6 Ligand geometry [i](#)

Of 12 ligands modelled in this entry, 11 are monoatomic - leaving 1 for Mogul analysis.

In the following table, the Counts columns list the number of bonds (or angles) for which Mogul statistics could be retrieved, the number of bonds (or angles) that are observed in the model and the number of bonds (or angles) that are defined in the Chemical Component Dictionary. The Link column lists molecule types, if any, to which the group is linked. The Z score for a bond length (or angle) is the number of standard deviations the observed value is removed from the expected value. A bond length (or angle) with $|Z| > 2$ is considered an outlier worth inspection. RMSZ is the root-mean-square of all Z scores of the bond lengths (or angles).

Mol	Type	Chain	Res	Link	Bond lengths			Bond angles		
					Counts	RMSZ	$\# Z > 2$	Counts	RMSZ	$\# Z > 2$
5	U5P	E	101	2	22,22,22	0.52	0	33,33,33	1.53	6 (18%)

In the following table, the Chirals column lists the number of chiral outliers, the number of chiral centers analysed, the number of these observed in the model and the number defined in the Chemical Component Dictionary. Similar counts are reported in the Torsion and Rings columns. '-' means no outliers of that kind were identified.

Mol	Type	Chain	Res	Link	Chirals	Torsions	Rings
5	U5P	E	101	2	-	8/10/26/26	0/2/2/2

There are no bond length outliers.

The worst 5 of 6 bond angle outliers are listed below:

Mol	Chain	Res	Type	Atoms	Z	Observed($^{\circ}$)	Ideal($^{\circ}$)
5	E	101	U5P	C1'-N1-C2	4.54	125.79	117.57
5	E	101	U5P	O2-C2-N1	3.28	127.14	122.79
5	E	101	U5P	C1'-N1-C6	-3.11	114.06	120.84
5	E	101	U5P	O5'-P-O1P	-2.99	98.08	106.47
5	E	101	U5P	O3P-P-O2P	2.68	117.87	107.64

There are no chirality outliers.

5 of 8 torsion outliers are listed below:

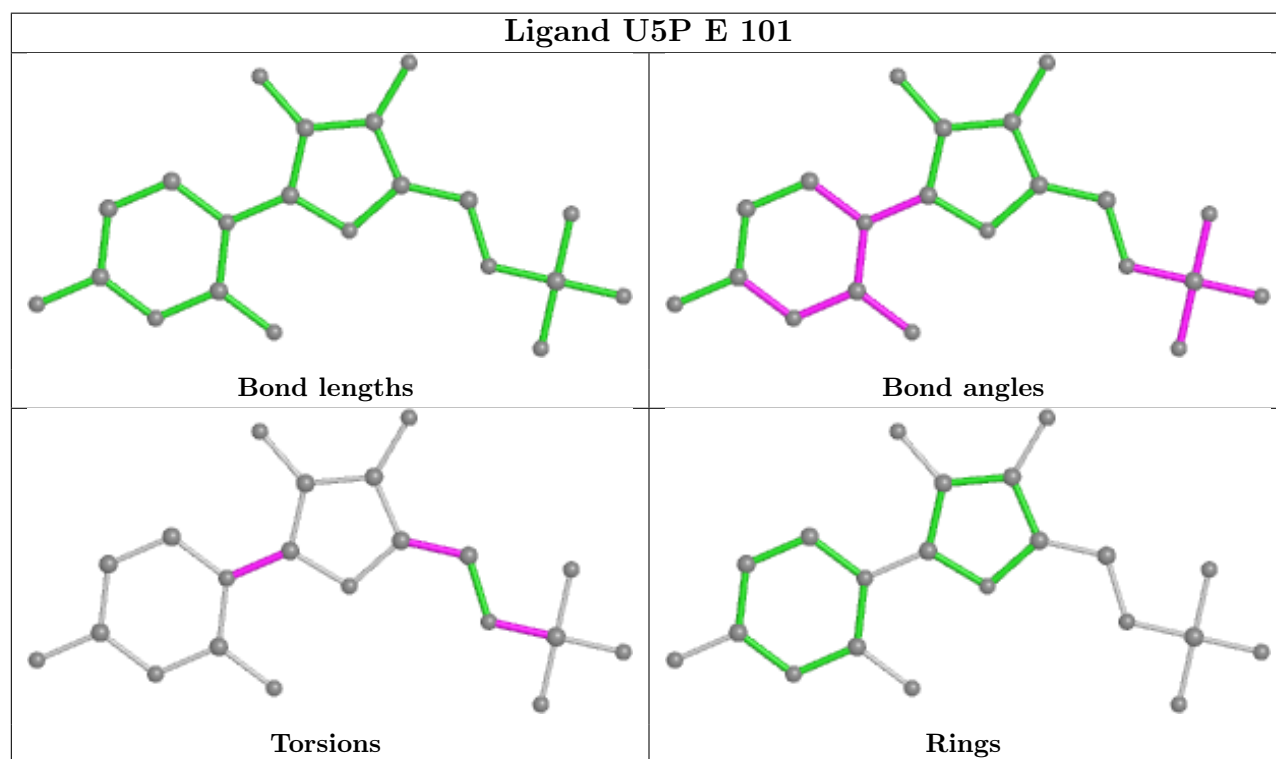
Mol	Chain	Res	Type	Atoms
5	E	101	U5P	C5'-O5'-P-O1P
5	E	101	U5P	C5'-O5'-P-O2P
5	E	101	U5P	C5'-O5'-P-O3P
5	E	101	U5P	C2'-C1'-N1-C6
5	E	101	U5P	O4'-C1'-N1-C6

There are no ring outliers.

1 monomer is involved in 1 short contact:

Mol	Chain	Res	Type	Clashes	Symm-Clashes
5	E	101	U5P	1	0

The following is a two-dimensional graphical depiction of Mogul quality analysis of bond lengths, bond angles, torsion angles, and ring geometry for all instances of the Ligand of Interest. In addition, ligands with molecular weight > 250 and outliers as shown on the validation Tables will also be included. For torsion angles, if less than 5% of the Mogul distribution of torsion angles is within 10 degrees of the torsion angle in question, then that torsion angle is considered an outlier. Any bond that is central to one or more torsion angles identified as an outlier by Mogul will be highlighted in the graph. For rings, the root-mean-square deviation (RMSD) between the ring in question and similar rings identified by Mogul is calculated over all ring torsion angles. If the average RMSD is greater than 60 degrees and the minimal RMSD between the ring in question and any Mogul-identified rings is also greater than 60 degrees, then that ring is considered an outlier. The outliers are highlighted in purple. The color gray indicates Mogul did not find sufficient equivalents in the CSD to analyse the geometry.



5.7 Other polymers [i](#)

There are no such residues in this entry.

5.8 Polymer linkage issues [i](#)

There are no chain breaks in this entry.

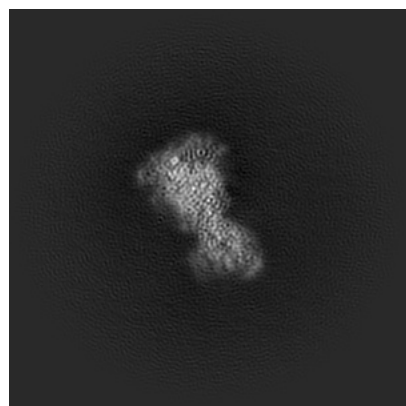
6 Map visualisation [i](#)

This section contains visualisations of the EMDB entry EMD-27416. These allow visual inspection of the internal detail of the map and identification of artifacts.

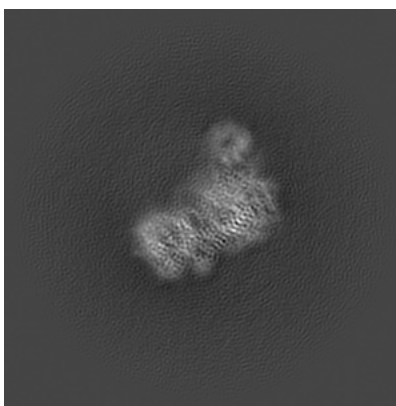
Images derived from a raw map, generated by summing the deposited half-maps, are presented below the corresponding image components of the primary map to allow further visual inspection and comparison with those of the primary map.

6.1 Orthogonal projections [i](#)

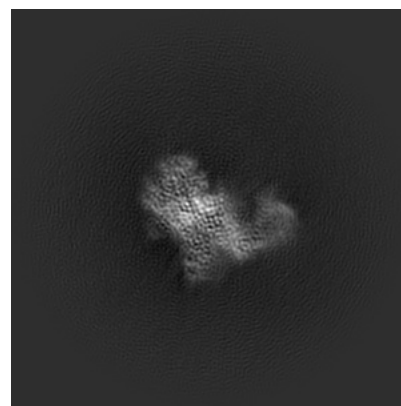
6.1.1 Primary map



X

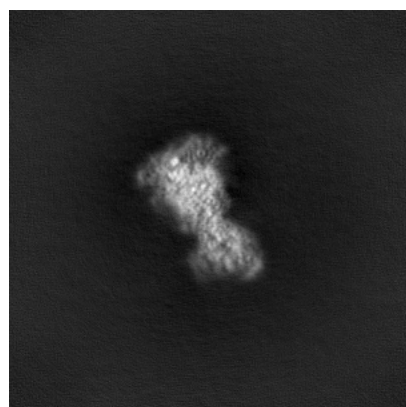


Y

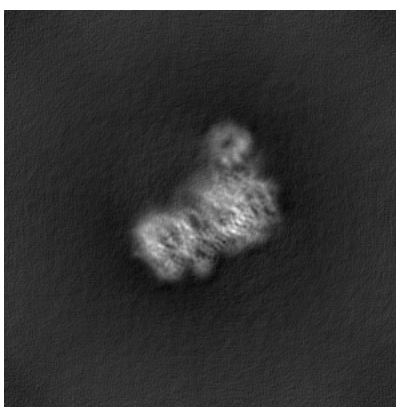


Z

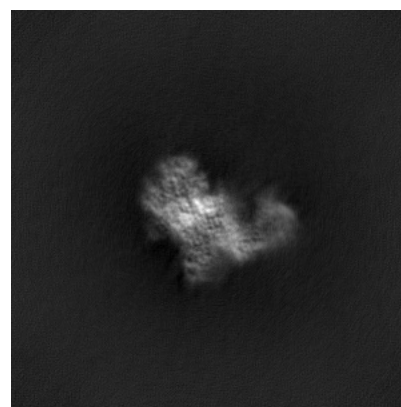
6.1.2 Raw map



X



Y

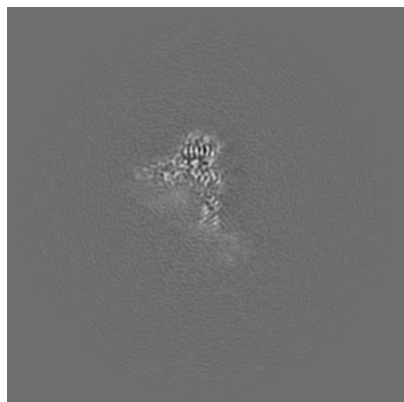


Z

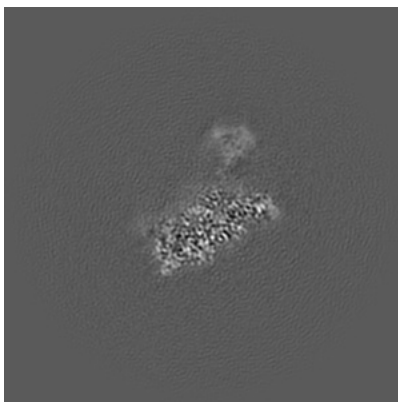
The images above show the map projected in three orthogonal directions.

6.2 Central slices [i](#)

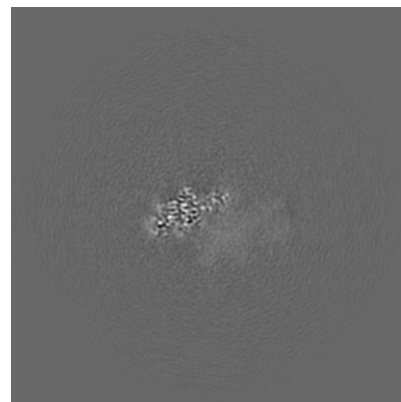
6.2.1 Primary map



X Index: 217

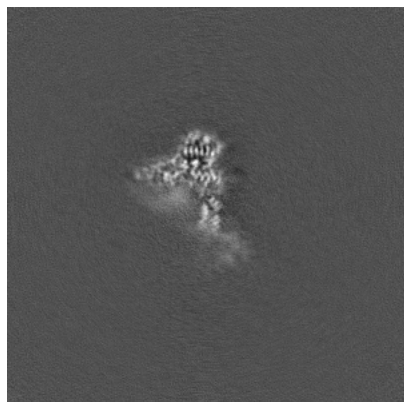


Y Index: 217

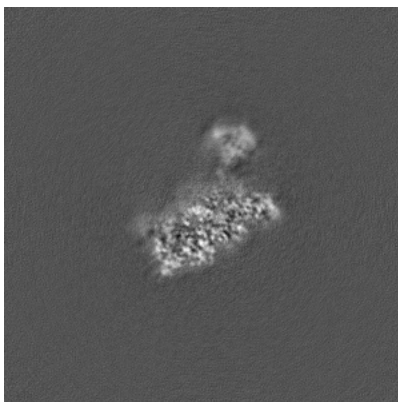


Z Index: 217

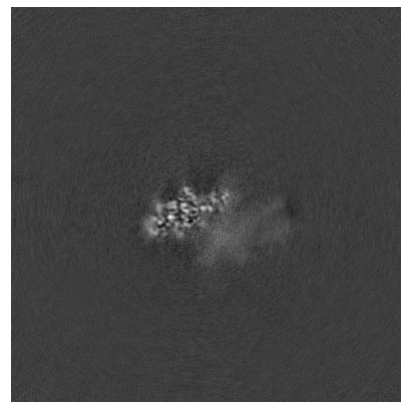
6.2.2 Raw map



X Index: 217



Y Index: 217

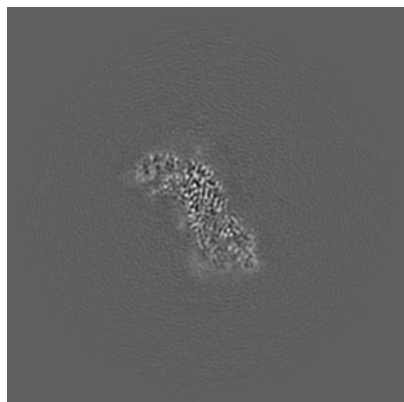


Z Index: 217

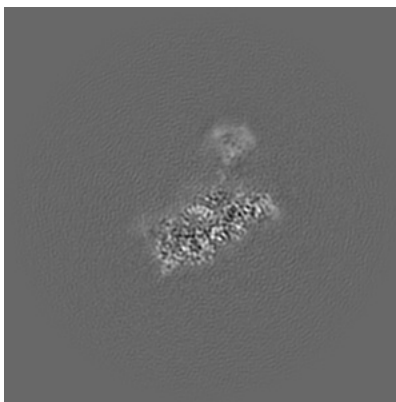
The images above show central slices of the map in three orthogonal directions.

6.3 Largest variance slices [i](#)

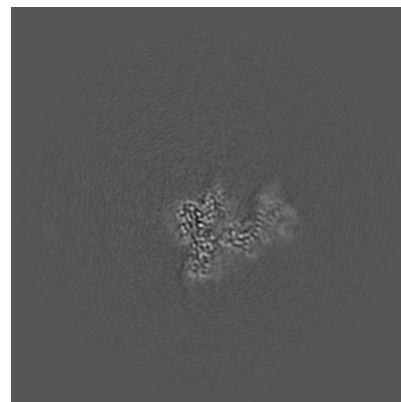
6.3.1 Primary map



X Index: 193

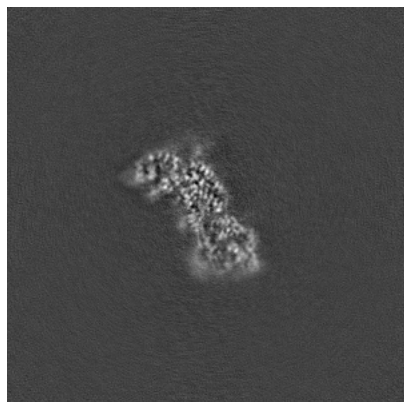


Y Index: 216

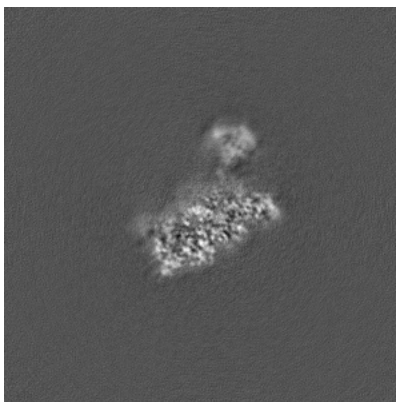


Z Index: 252

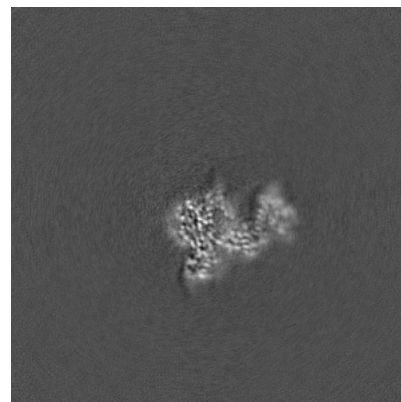
6.3.2 Raw map



X Index: 194



Y Index: 217

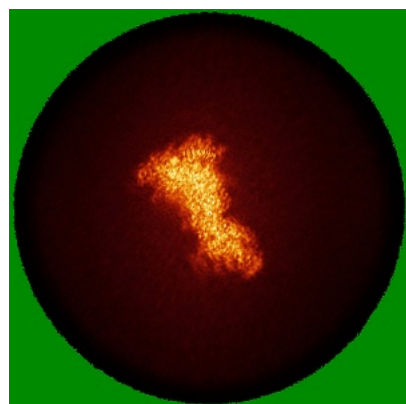


Z Index: 254

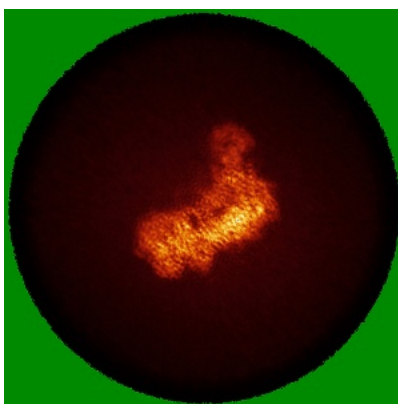
The images above show the largest variance slices of the map in three orthogonal directions.

6.4 Orthogonal standard-deviation projections (False-color) [i](#)

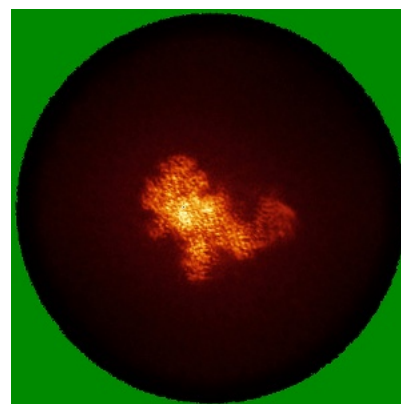
6.4.1 Primary map



X



Y

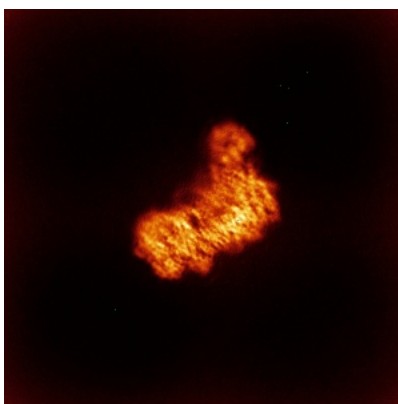


Z

6.4.2 Raw map



X



Y

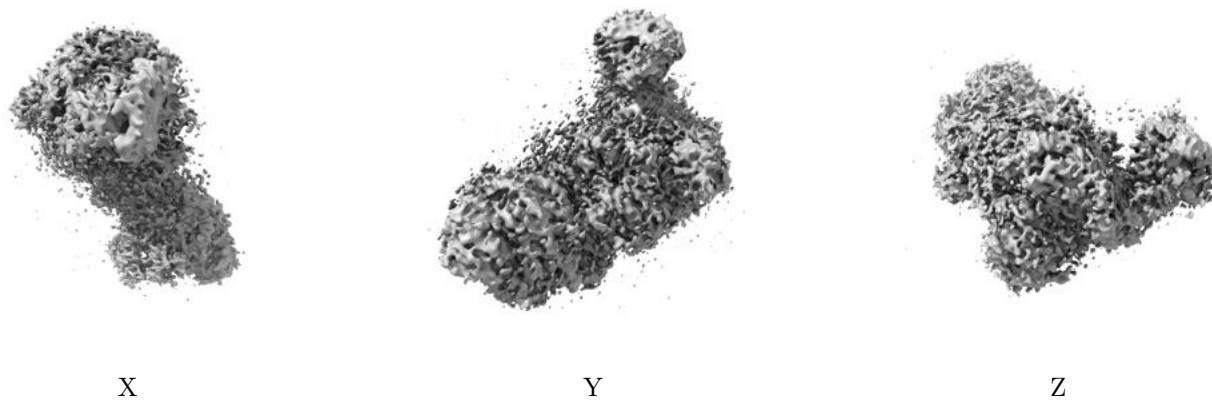


Z

The images above show the map standard deviation projections with false color in three orthogonal directions. Minimum values are shown in green, max in blue, and dark to light orange shades represent small to large values respectively.

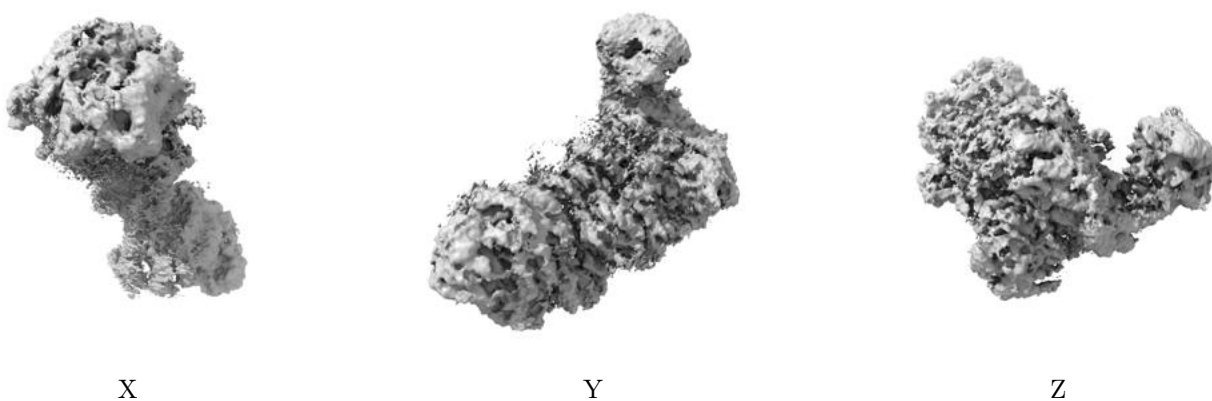
6.5 Orthogonal surface views [i](#)

6.5.1 Primary map



The images above show the 3D surface view of the map at the recommended contour level 0.2. These images, in conjunction with the slice images, may facilitate assessment of whether an appropriate contour level has been provided.

6.5.2 Raw map



These images show the 3D surface of the raw map. The raw map's contour level was selected so that its surface encloses the same volume as the primary map does at its recommended contour level.

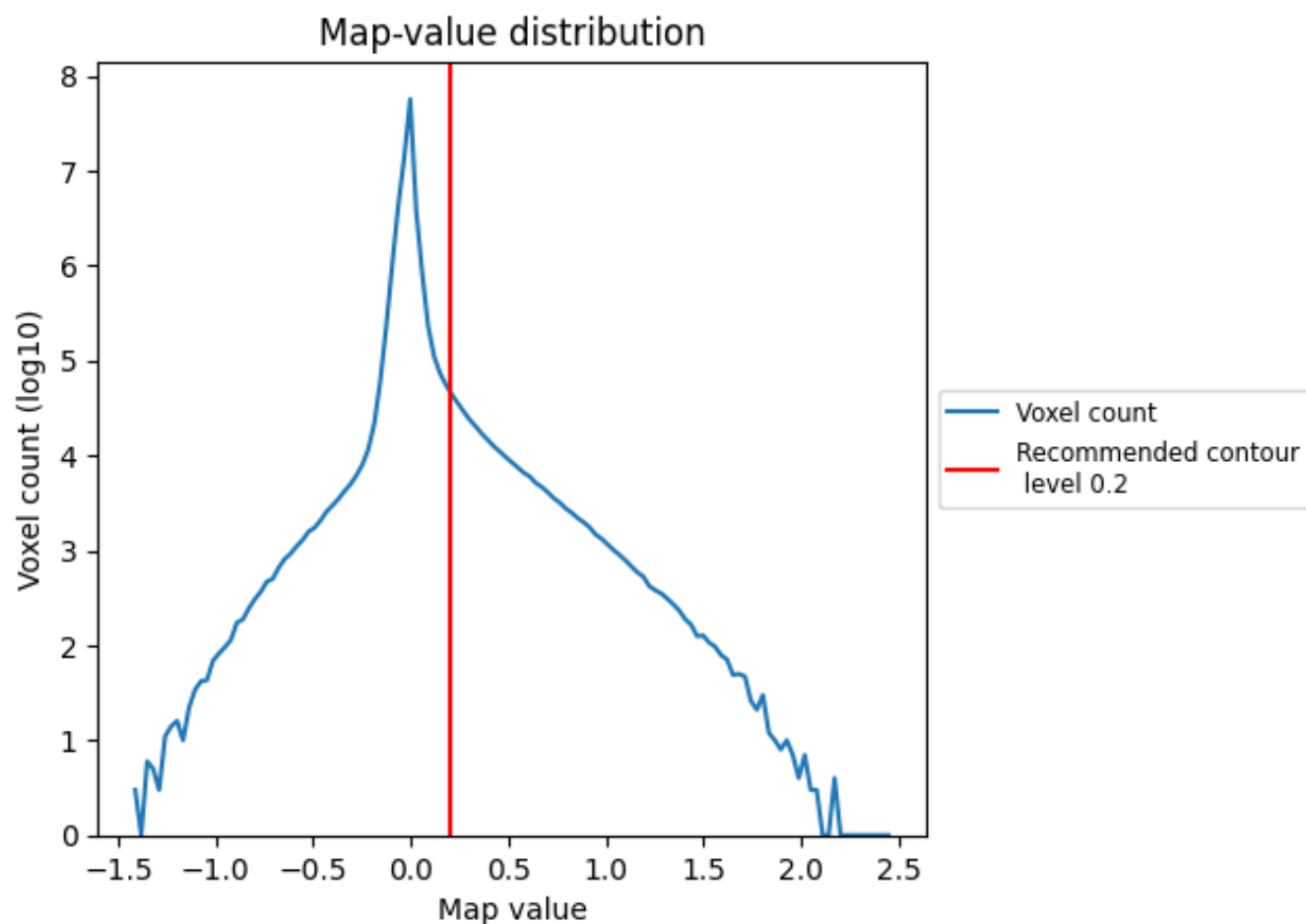
6.6 Mask visualisation [i](#)

This section was not generated. No masks/segmentation were deposited.

7 Map analysis [i](#)

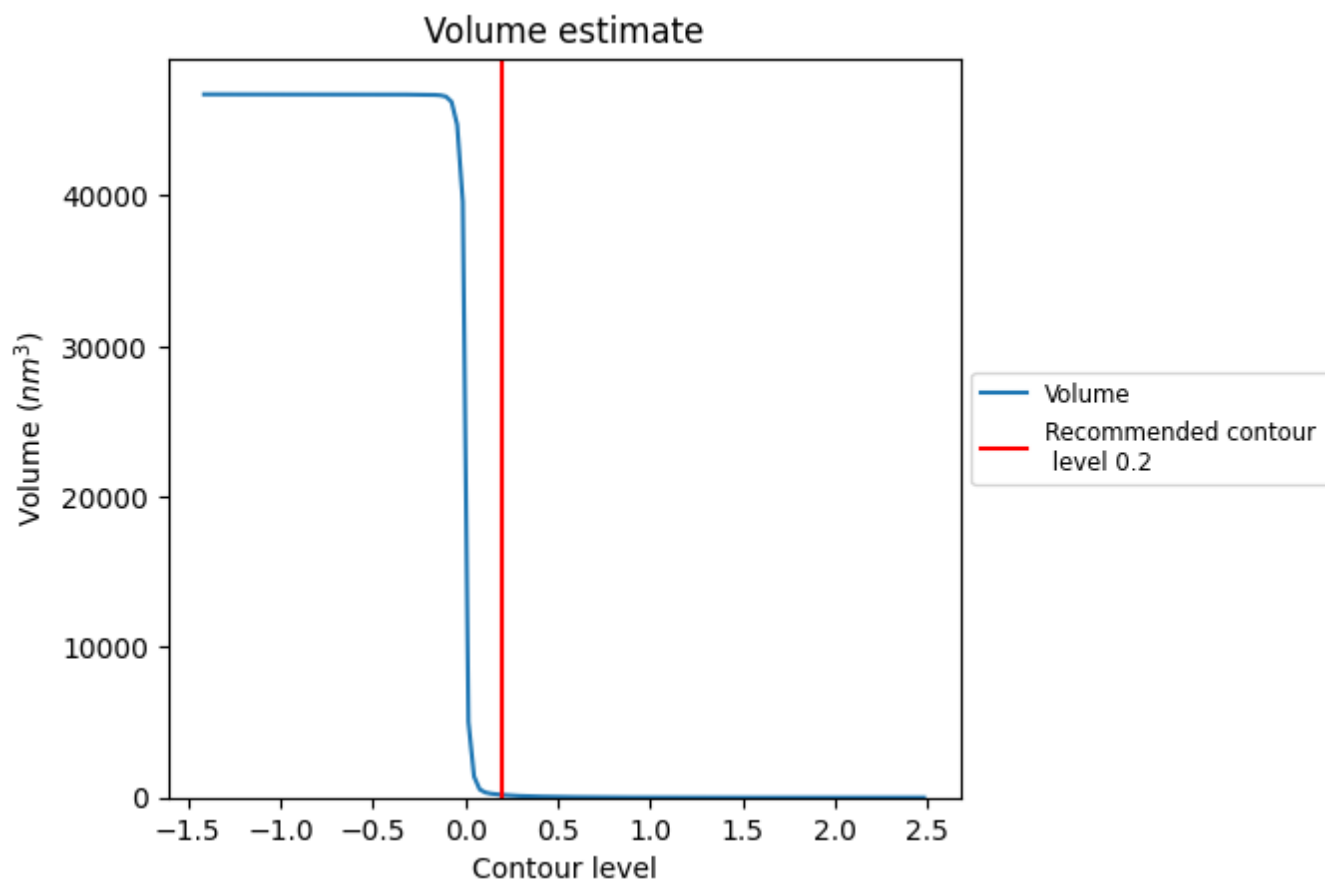
This section contains the results of statistical analysis of the map.

7.1 Map-value distribution [i](#)



The map-value distribution is plotted in 128 intervals along the x-axis. The y-axis is logarithmic. A spike in this graph at zero usually indicates that the volume has been masked.

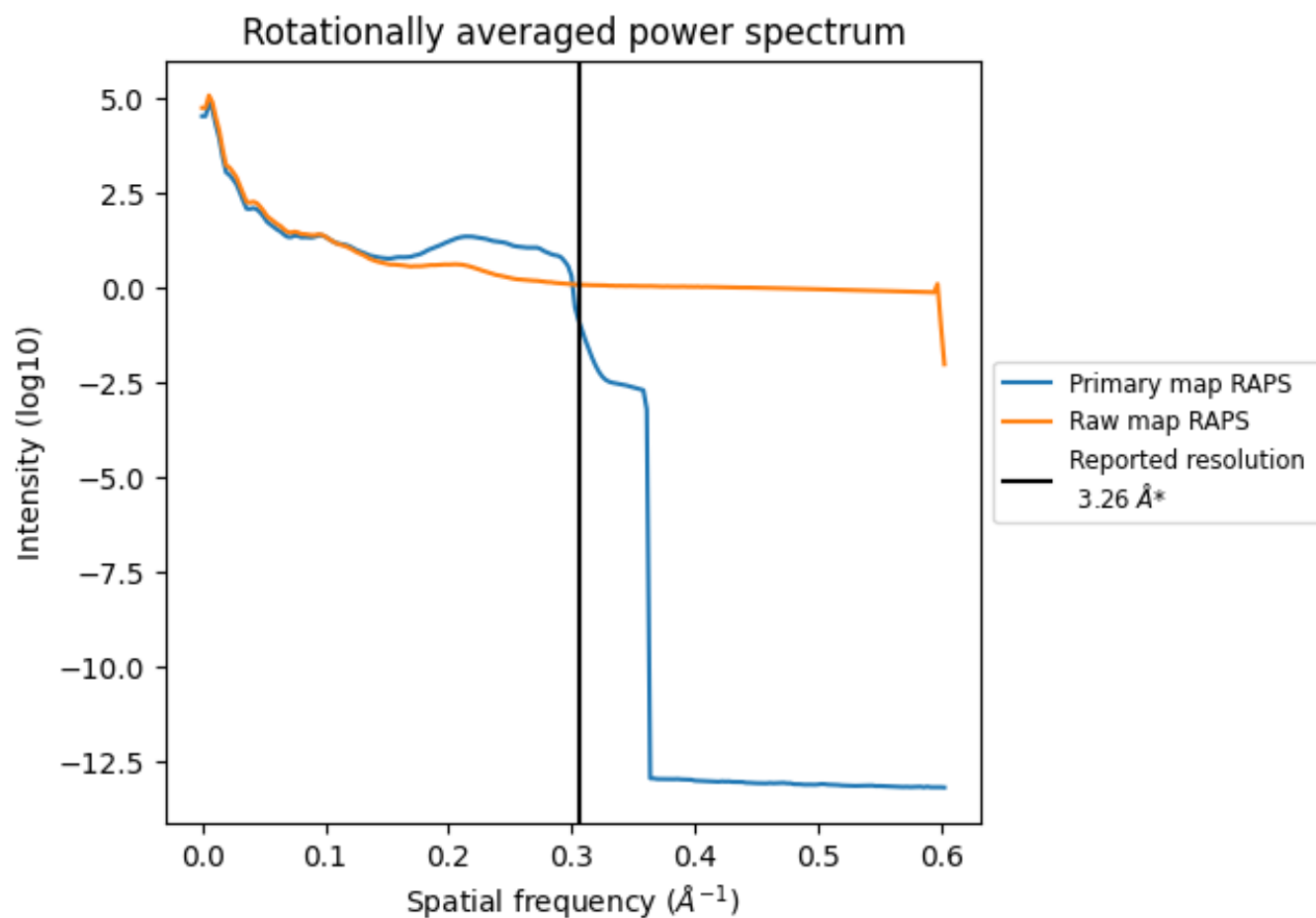
7.2 Volume estimate [i](#)



The volume at the recommended contour level is 176 nm^3 ; this corresponds to an approximate mass of 159 kDa.

The volume estimate graph shows how the enclosed volume varies with the contour level. The recommended contour level is shown as a vertical line and the intersection between the line and the curve gives the volume of the enclosed surface at the given level.

7.3 Rotationally averaged power spectrum ⓘ

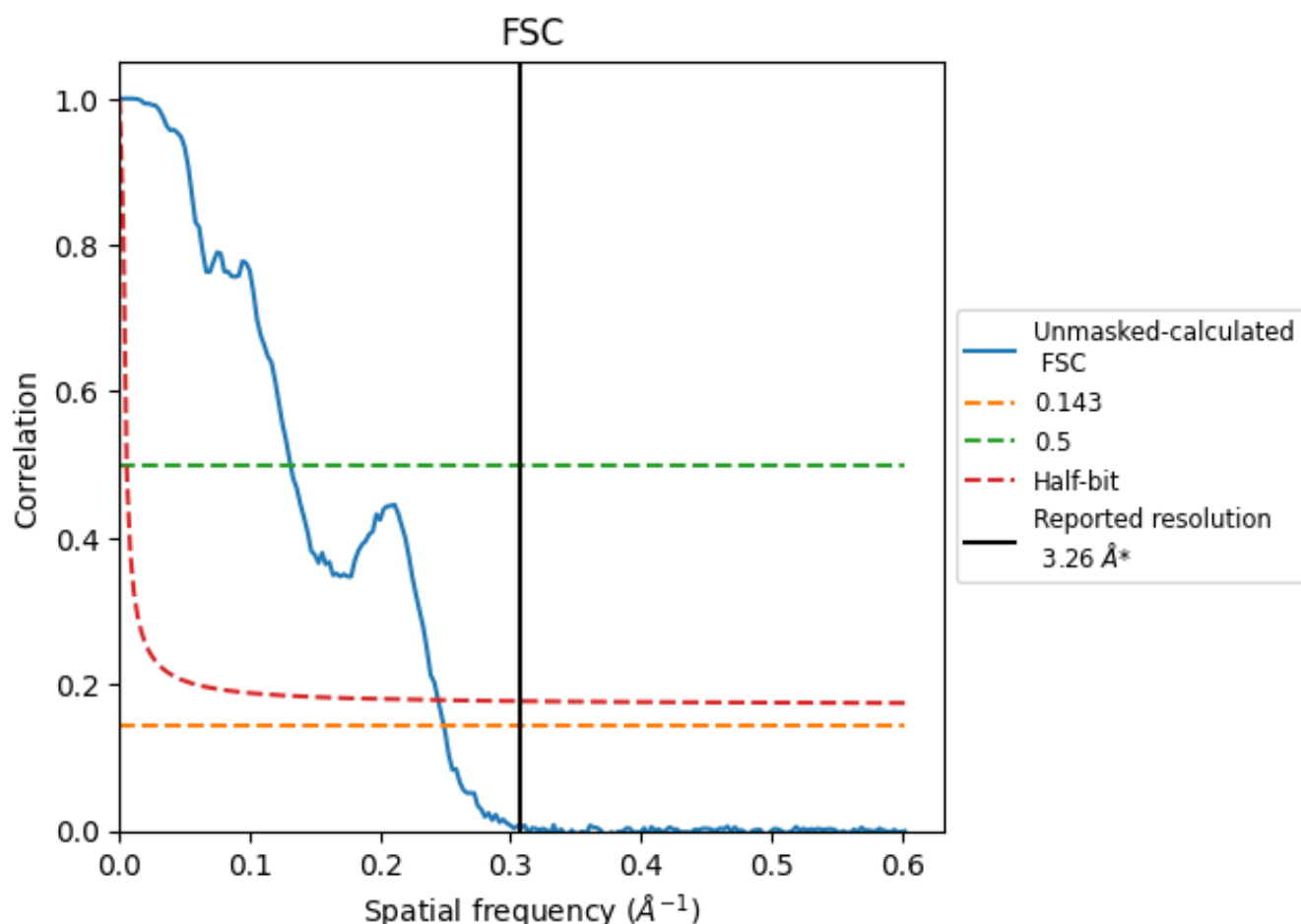


*Reported resolution corresponds to spatial frequency of 0.307 Å⁻¹

8 Fourier-Shell correlation [i](#)

Fourier-Shell Correlation (FSC) is the most commonly used method to estimate the resolution of single-particle and subtomogram-averaged maps. The shape of the curve depends on the imposed symmetry, mask and whether or not the two 3D reconstructions used were processed from a common reference. The reported resolution is shown as a black line. A curve is displayed for the half-bit criterion in addition to lines showing the 0.143 gold standard cut-off and 0.5 cut-off.

8.1 FSC [i](#)



*Reported resolution corresponds to spatial frequency of 0.307 Å⁻¹

8.2 Resolution estimates [i](#)

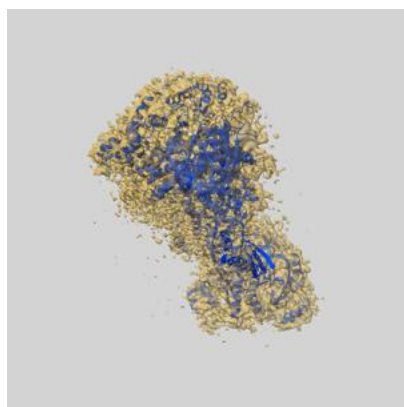
Resolution estimate (Å)	Estimation criterion (FSC cut-off)		
	0.143	0.5	Half-bit
Reported by author	3.26	-	-
Author-provided FSC curve	-	-	-
Unmasked-calculated*	4.02	7.62	4.09

*Resolution estimate based on FSC curve calculated by comparison of deposited half-maps. The value from deposited half-maps intersecting FSC 0.143 CUT-OFF 4.02 differs from the reported value 3.26 by more than 10 %

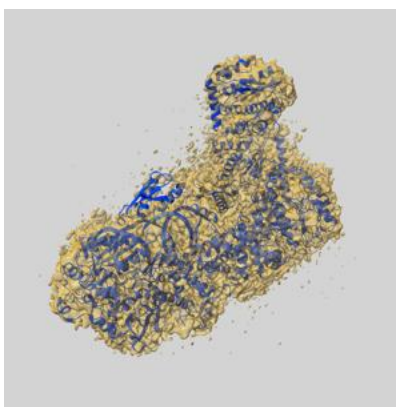
9 Map-model fit [i](#)

This section contains information regarding the fit between EMDB map EMD-27416 and PDB model 8DG5. Per-residue inclusion information can be found in section [3](#) on page [5](#).

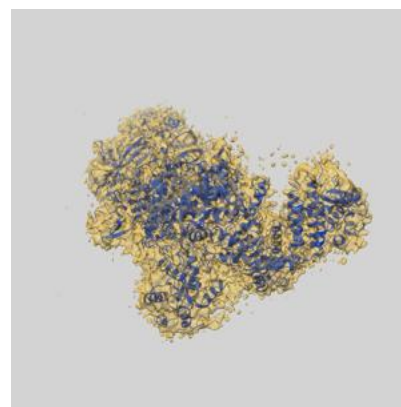
9.1 Map-model overlay [i](#)



X



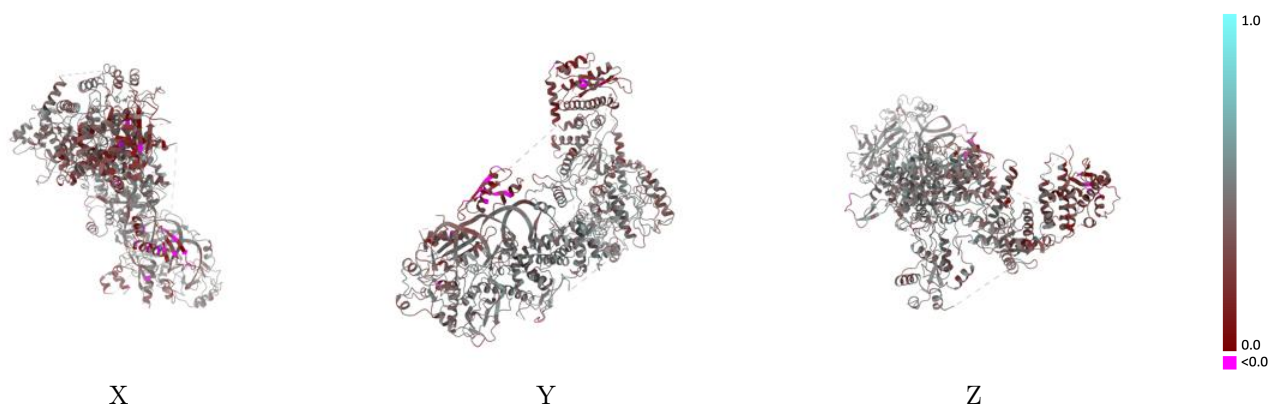
Y



Z

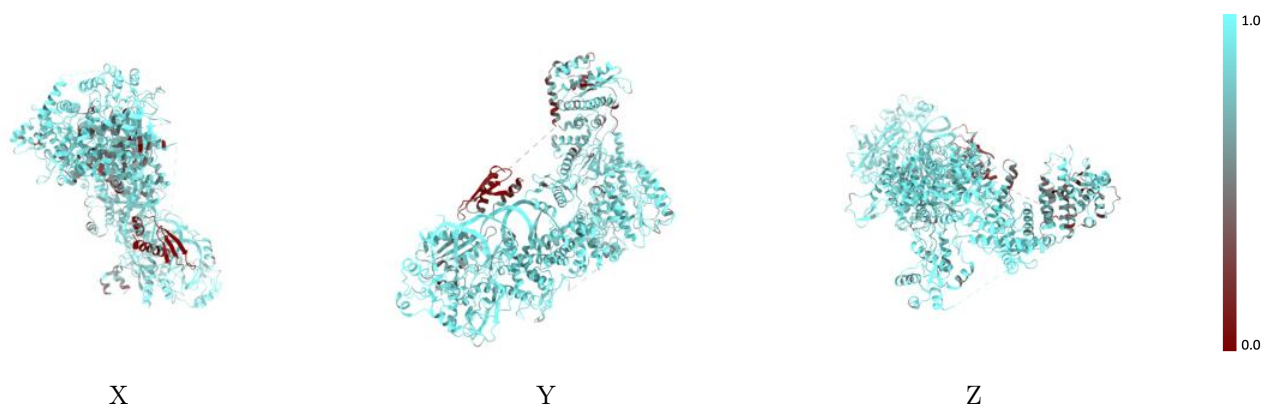
The images above show the 3D surface view of the map at the recommended contour level 0.2 at 50% transparency in yellow overlaid with a ribbon representation of the model coloured in blue. These images allow for the visual assessment of the quality of fit between the atomic model and the map.

9.2 Q-score mapped to coordinate model [i](#)



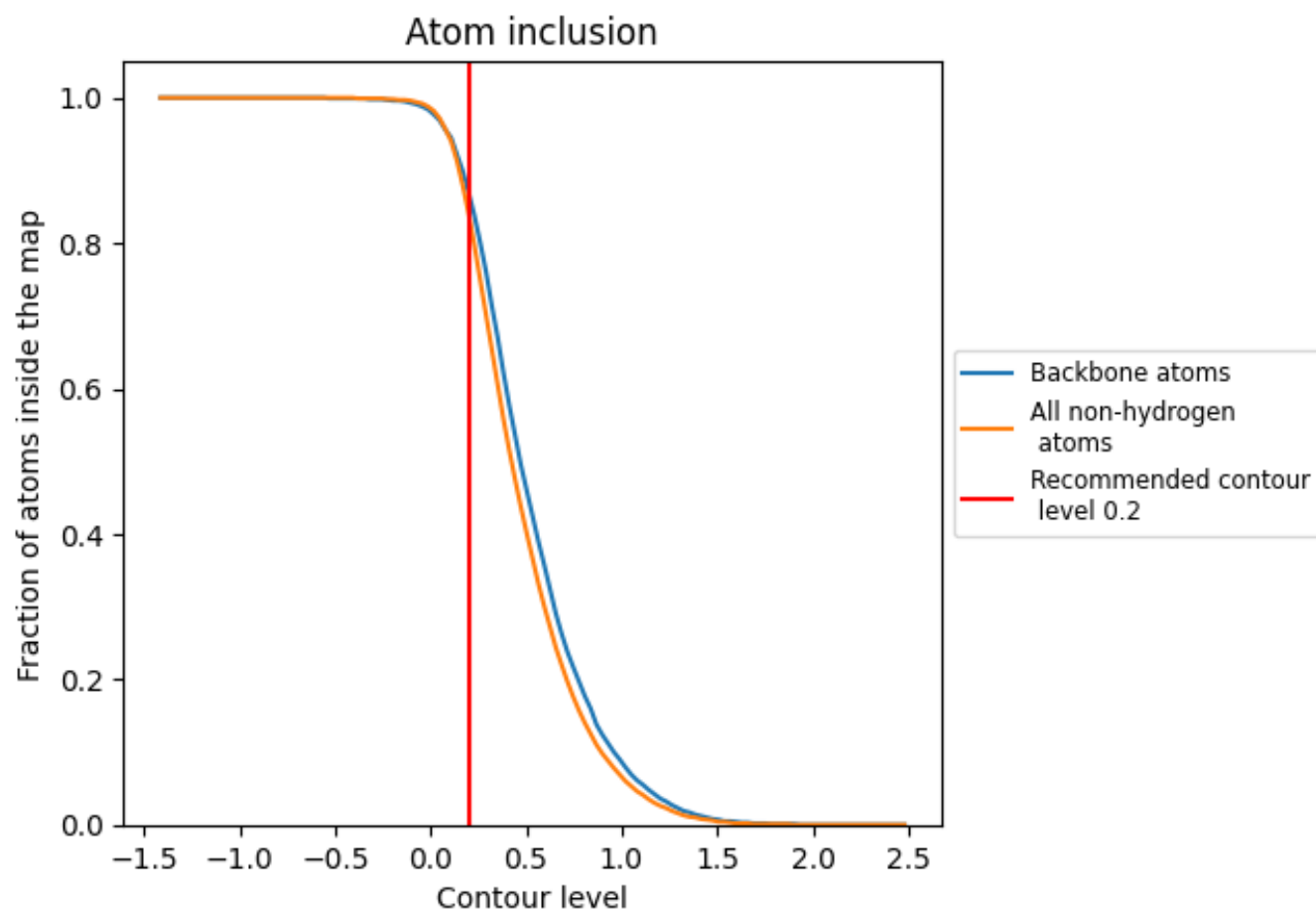
The images above show the model with each residue coloured according to its Q-score. This shows their resolvability in the map with higher Q-score values reflecting better resolvability. Please note: Q-score is calculating the resolvability of atoms, and thus high values are only expected at resolutions at which atoms can be resolved. Low Q-score values may therefore be expected for many entries.

9.3 Atom inclusion mapped to coordinate model [i](#)



The images above show the model with each residue coloured according to its atom inclusion. This shows to what extent they are inside the map at the recommended contour level (0.2).

9.4 Atom inclusion [i](#)



At the recommended contour level, 87% of all backbone atoms, 84% of all non-hydrogen atoms, are inside the map.

9.5 Map-model fit summary ⓘ

The table lists the average atom inclusion at the recommended contour level (0.2) and Q-score for the entire model and for each chain.

Chain	Atom inclusion	Q-score
All	<div></div> 0.8400	<div></div> 0.4060
A	<div></div> 0.8730	<div></div> 0.4270
E	<div></div> 0.9260	<div></div> 0.4370
K	<div></div> 0.5720	<div></div> 0.2500

