



wwPDB EM Validation Summary Report ⓘ

Oct 14, 2024 – 04:15 PM JST

PDB ID : 7DWB
EMDB ID : EMD-30880
Title : Human Pannexin1 model
Authors : Zhang, S.S.; Yang, M.J.
Deposited on : 2021-01-17
Resolution : 3.15 Å(reported)

This is a wwPDB EM Validation Summary Report for a publicly released PDB entry.

We welcome your comments at validation@mail.wwpdb.org

A user guide is available at

<https://www.wwpdb.org/validation/2017/EMValidationReportHelp>

with specific help available everywhere you see the ⓘ symbol.

The types of validation reports are described at

<http://www.wwpdb.org/validation/2017/FAQs#types>.

The following versions of software and data (see [references ⓘ](#)) were used in the production of this report:

EMDB validation analysis : 0.0.1.dev113
MolProbity : 4.02b-467
Percentile statistics : 20231227.v01 (using entries in the PDB archive December 27th 2023)
MapQ : 1.9.13
Ideal geometry (proteins) : Engh & Huber (2001)
Ideal geometry (DNA, RNA) : Parkinson et al. (1996)
Validation Pipeline (wwPDB-VP) : 2.39

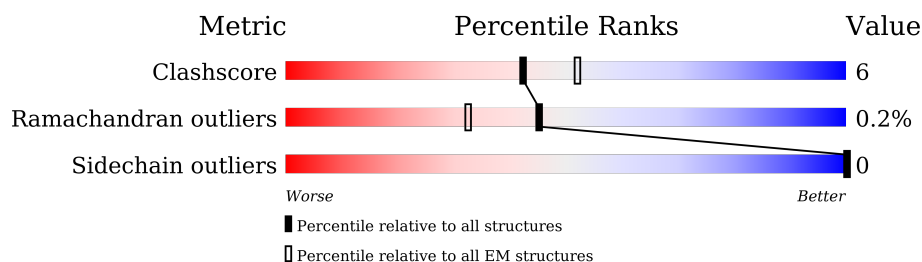
1 Overall quality at a glance

The following experimental techniques were used to determine the structure:

ELECTRON MICROSCOPY

The reported resolution of this entry is 3.15 Å.

Percentile scores (ranging between 0-100) for global validation metrics of the entry are shown in the following graphic. The table shows the number of entries on which the scores are based.



Metric	Whole archive (#Entries)	EM structures (#Entries)
Clashscore	210492	15764
Ramachandran outliers	207382	16835
Sidechain outliers	206894	16415

The table below summarises the geometric issues observed across the polymeric chains and their fit to the map. The red, orange, yellow and green segments of the bar indicate the fraction of residues that contain outliers for ≥ 3 , 2, 1 and 0 types of geometric quality criteria respectively. A grey segment represents the fraction of residues that are not modelled. The numeric value for each fraction is indicated below the corresponding segment, with a dot representing fractions $\leq 5\%$. The upper red bar (where present) indicates the fraction of residues that have poor fit to the EM map (all-atom inclusion $< 40\%$). The numeric value is given above the bar.

Mol	Chain	Length	Quality of chain
1	A	433	<div> <div>34%</div> <div>83%</div> <div>14%</div> <div>.</div> </div>
1	B	433	<div> <div>34%</div> <div>84%</div> <div>13%</div> <div>.</div> </div>
1	C	433	<div> <div>34%</div> <div>84%</div> <div>13%</div> <div>.</div> </div>
1	D	433	<div> <div>34%</div> <div>83%</div> <div>14%</div> <div>.</div> </div>
1	E	433	<div> <div>33%</div> <div>83%</div> <div>14%</div> <div>.</div> </div>
1	F	433	<div> <div>34%</div> <div>82%</div> <div>15%</div> <div>.</div> </div>
1	G	433	<div> <div>34%</div> <div>83%</div> <div>14%</div> <div>.</div> </div>

2 Entry composition

There is only 1 type of molecule in this entry. The entry contains 23464 atoms, of which 0 are hydrogens and 0 are deuteriums.

In the tables below, the AltConf column contains the number of residues with at least one atom in alternate conformation and the Trace column contains the number of residues modelled with at most 2 atoms.

- Molecule 1 is a protein called Pannexin-1.

Mol	Chain	Residues	Atoms					AltConf	Trace
1	A	421	Total	C	N	O	S	0	0
			3352	2189	535	608	20		
1	B	421	Total	C	N	O	S	0	0
			3352	2189	535	608	20		
1	C	421	Total	C	N	O	S	0	0
			3352	2189	535	608	20		
1	D	421	Total	C	N	O	S	0	0
			3352	2189	535	608	20		
1	E	421	Total	C	N	O	S	0	0
			3352	2189	535	608	20		
1	F	421	Total	C	N	O	S	0	0
			3352	2189	535	608	20		
1	G	421	Total	C	N	O	S	0	0
			3352	2189	535	608	20		

There are 63 discrepancies between the modelled and reference sequences:

Chain	Residue	Modelled	Actual	Comment	Reference
A	5	HIS	GLN	engineered mutation	UNP Q96RD7
A	173	TRP	-	insertion	UNP Q96RD7
A	174	SER	-	insertion	UNP Q96RD7
A	175	HIS	-	insertion	UNP Q96RD7
A	176	PRO	-	insertion	UNP Q96RD7
A	177	GLN	-	insertion	UNP Q96RD7
A	178	PHE	-	insertion	UNP Q96RD7
A	179	GLU	-	insertion	UNP Q96RD7
A	180	LYS	-	insertion	UNP Q96RD7
B	5	HIS	GLN	engineered mutation	UNP Q96RD7
B	173	TRP	-	insertion	UNP Q96RD7
B	174	SER	-	insertion	UNP Q96RD7
B	175	HIS	-	insertion	UNP Q96RD7
B	176	PRO	-	insertion	UNP Q96RD7
B	177	GLN	-	insertion	UNP Q96RD7
B	178	PHE	-	insertion	UNP Q96RD7

Continued on next page...

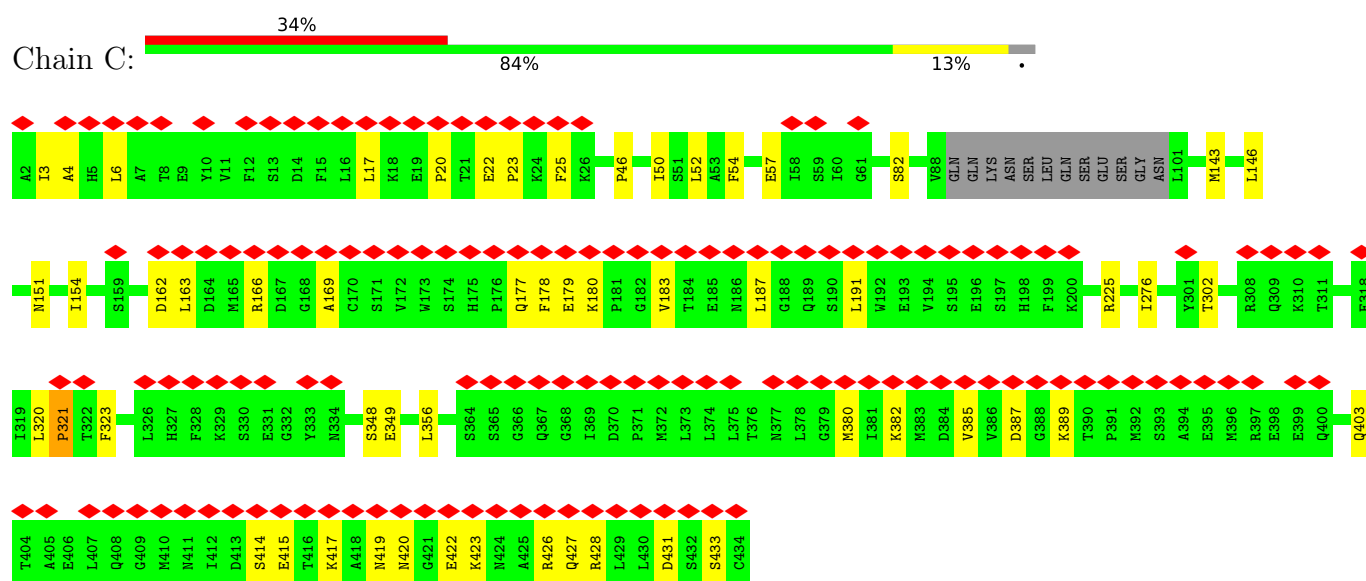
Continued from previous page...

Chain	Residue	Modelled	Actual	Comment	Reference
B	179	GLU	-	insertion	UNP Q96RD7
B	180	LYS	-	insertion	UNP Q96RD7
C	5	HIS	GLN	engineered mutation	UNP Q96RD7
C	173	TRP	-	insertion	UNP Q96RD7
C	174	SER	-	insertion	UNP Q96RD7
C	175	HIS	-	insertion	UNP Q96RD7
C	176	PRO	-	insertion	UNP Q96RD7
C	177	GLN	-	insertion	UNP Q96RD7
C	178	PHE	-	insertion	UNP Q96RD7
C	179	GLU	-	insertion	UNP Q96RD7
C	180	LYS	-	insertion	UNP Q96RD7
D	5	HIS	GLN	engineered mutation	UNP Q96RD7
D	173	TRP	-	insertion	UNP Q96RD7
D	174	SER	-	insertion	UNP Q96RD7
D	175	HIS	-	insertion	UNP Q96RD7
D	176	PRO	-	insertion	UNP Q96RD7
D	177	GLN	-	insertion	UNP Q96RD7
D	178	PHE	-	insertion	UNP Q96RD7
D	179	GLU	-	insertion	UNP Q96RD7
D	180	LYS	-	insertion	UNP Q96RD7
E	5	HIS	GLN	engineered mutation	UNP Q96RD7
E	173	TRP	-	insertion	UNP Q96RD7
E	174	SER	-	insertion	UNP Q96RD7
E	175	HIS	-	insertion	UNP Q96RD7
E	176	PRO	-	insertion	UNP Q96RD7
E	177	GLN	-	insertion	UNP Q96RD7
E	178	PHE	-	insertion	UNP Q96RD7
E	179	GLU	-	insertion	UNP Q96RD7
E	180	LYS	-	insertion	UNP Q96RD7
F	5	HIS	GLN	engineered mutation	UNP Q96RD7
F	173	TRP	-	insertion	UNP Q96RD7
F	174	SER	-	insertion	UNP Q96RD7
F	175	HIS	-	insertion	UNP Q96RD7
F	176	PRO	-	insertion	UNP Q96RD7
F	177	GLN	-	insertion	UNP Q96RD7
F	178	PHE	-	insertion	UNP Q96RD7
F	179	GLU	-	insertion	UNP Q96RD7
F	180	LYS	-	insertion	UNP Q96RD7
G	5	HIS	GLN	engineered mutation	UNP Q96RD7
G	173	TRP	-	insertion	UNP Q96RD7
G	174	SER	-	insertion	UNP Q96RD7
G	175	HIS	-	insertion	UNP Q96RD7

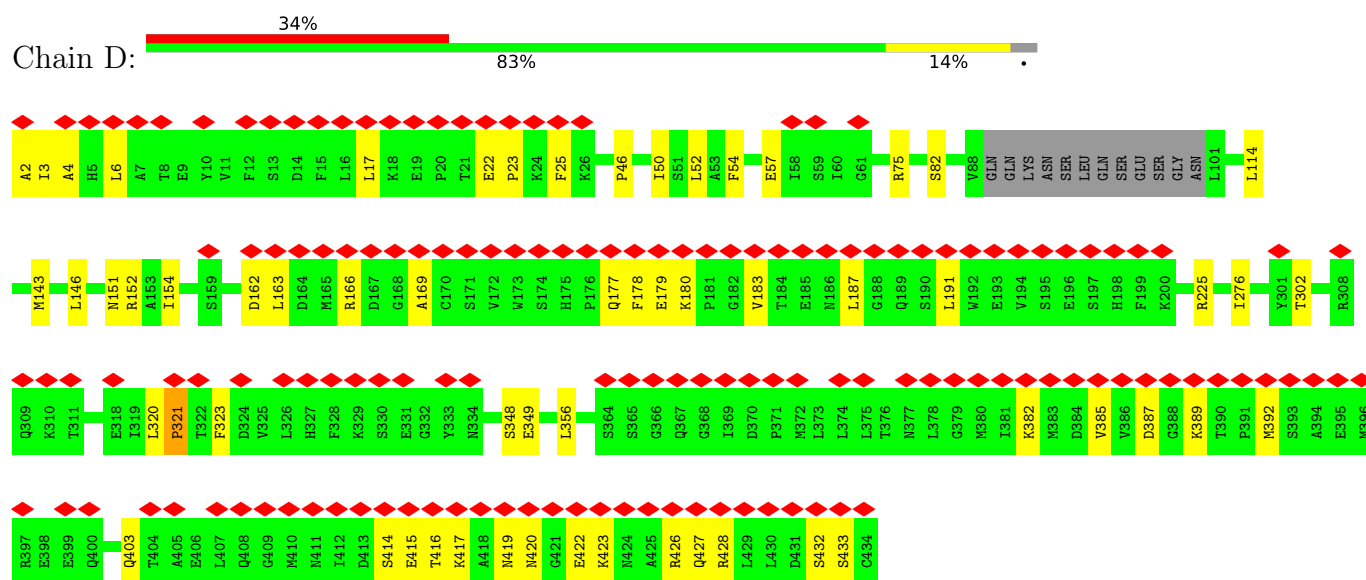
Continued on next page...

Continued from previous page...

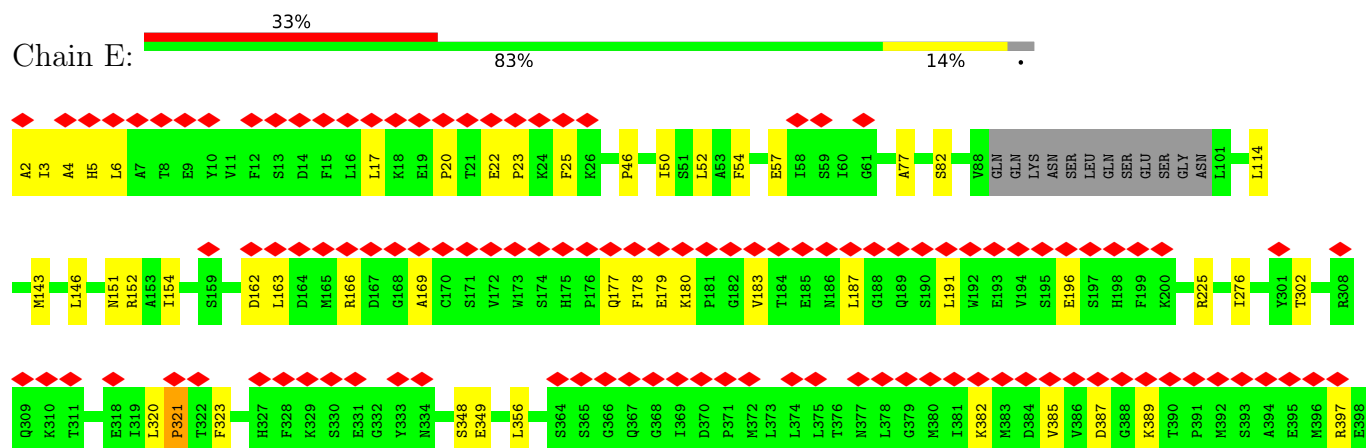
Chain	Residue	Modelled	Actual	Comment	Reference
G	176	PRO	-	insertion	UNP Q96RD7
G	177	GLN	-	insertion	UNP Q96RD7
G	178	PHE	-	insertion	UNP Q96RD7
G	179	GLU	-	insertion	UNP Q96RD7
G	180	LYS	-	insertion	UNP Q96RD7

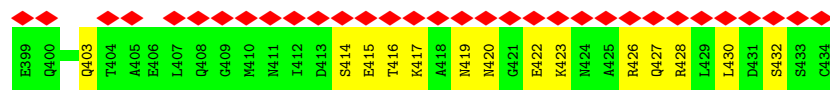


• Molecule 1: Pannexin-1

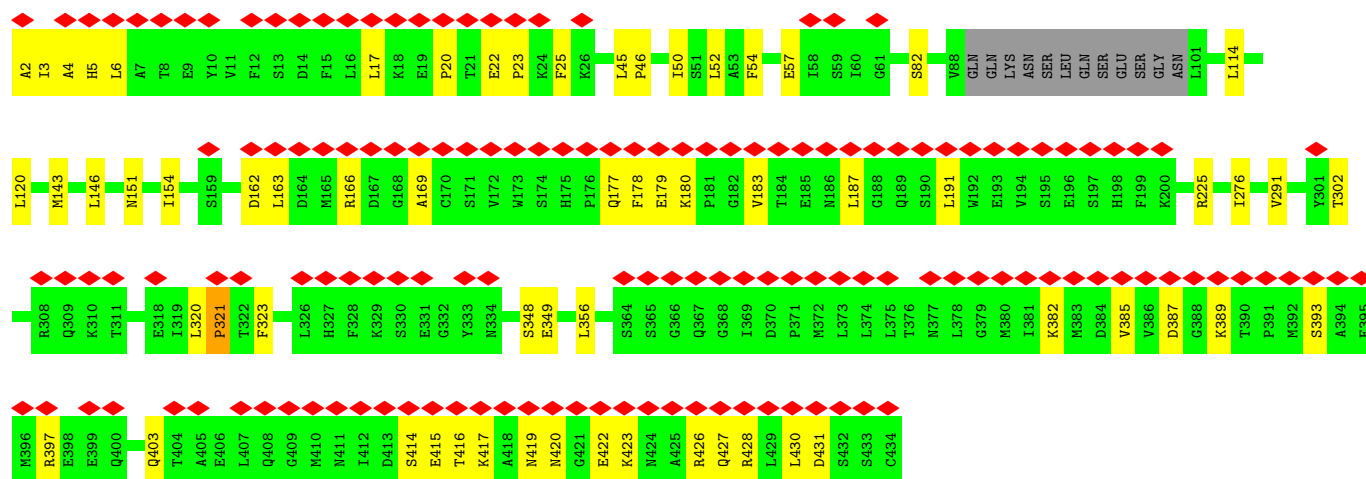
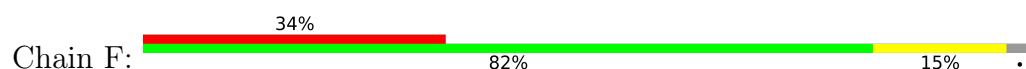


• Molecule 1: Pannexin-1

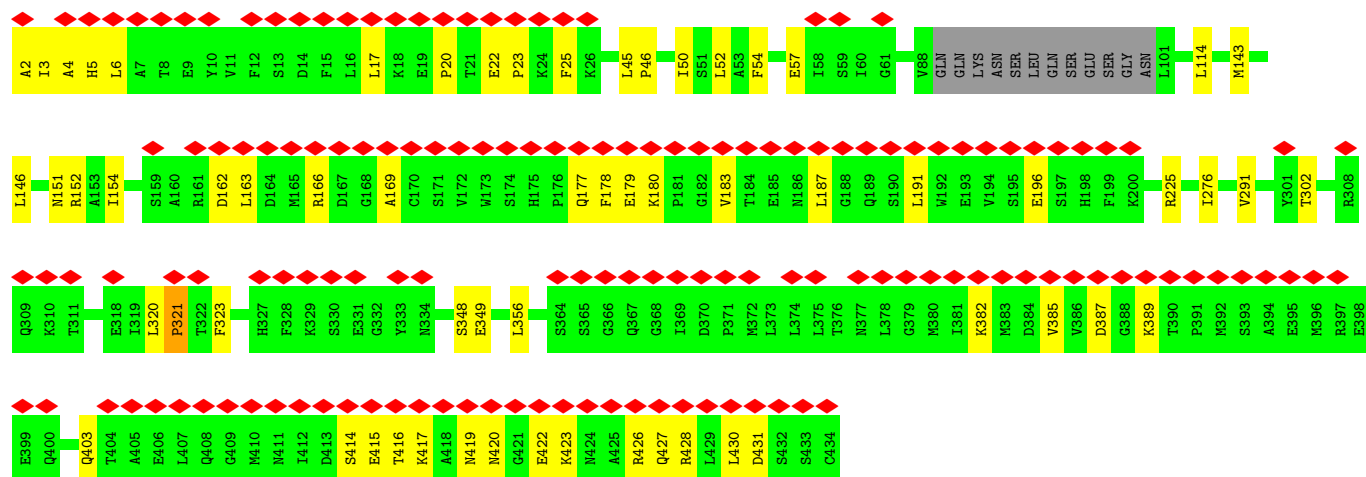
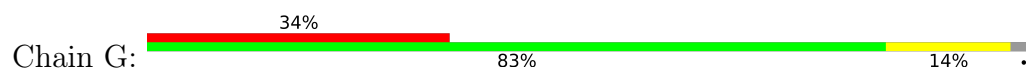




• Molecule 1: Pannexin-1



• Molecule 1: Pannexin-1



4 Experimental information

Property	Value	Source
EM reconstruction method	SINGLE PARTICLE	Depositor
Imposed symmetry	POINT, Not provided	
Number of particles used	110000	Depositor
Resolution determination method	FSC 0.143 CUT-OFF	Depositor
CTF correction method	PHASE FLIPPING AND AMPLITUDE CORRECTION	Depositor
Microscope	FEI TITAN KRIOS	Depositor
Voltage (kV)	300	Depositor
Electron dose ($e^-/\text{\AA}^2$)	50	Depositor
Minimum defocus (nm)	Not provided	
Maximum defocus (nm)	Not provided	
Magnification	Not provided	
Image detector	GATAN K2 SUMMIT (4k x 4k)	Depositor
Maximum map value	4.097	Depositor
Minimum map value	-2.203	Depositor
Average map value	0.034	Depositor
Map value standard deviation	0.155	Depositor
Recommended contour level	0.45	Depositor
Map size (Å)	216.00002, 216.00002, 216.00002	wwPDB
Map dimensions	200, 200, 200	wwPDB
Map angles (°)	90.0, 90.0, 90.0	wwPDB
Pixel spacing (Å)	1.08, 1.08, 1.08	Depositor

5 Model quality [i](#)

5.1 Standard geometry [i](#)

The Z score for a bond length (or angle) is the number of standard deviations the observed value is removed from the expected value. A bond length (or angle) with $|Z| > 5$ is considered an outlier worth inspection. RMSZ is the root-mean-square of all Z scores of the bond lengths (or angles).

Mol	Chain	Bond lengths		Bond angles	
		RMSZ	# Z >5	RMSZ	# Z >5
1	A	0.25	0/3427	0.46	0/4645
1	B	0.25	0/3427	0.46	0/4645
1	C	0.25	0/3427	0.46	0/4645
1	D	0.25	0/3427	0.46	0/4645
1	E	0.25	0/3427	0.46	0/4645
1	F	0.25	0/3427	0.46	0/4645
1	G	0.25	0/3427	0.46	0/4645
All	All	0.25	0/23989	0.46	0/32515

There are no bond length outliers.

There are no bond angle outliers.

There are no chirality outliers.

There are no planarity outliers.

5.2 Too-close contacts [i](#)

In the following table, the Non-H and H(model) columns list the number of non-hydrogen atoms and hydrogen atoms in the chain respectively. The H(added) column lists the number of hydrogen atoms added and optimized by MolProbity. The Clashes column lists the number of clashes within the asymmetric unit, whereas Symm-Clashes lists symmetry-related clashes.

Mol	Chain	Non-H	H(model)	H(added)	Clashes	Symm-Clashes
1	A	3352	0	3413	48	0
1	B	3352	0	3413	46	0
1	C	3352	0	3413	44	0
1	D	3352	0	3413	71	0
1	E	3352	0	3413	76	0
1	F	3352	0	3413	65	0
1	G	3352	0	3413	61	0
All	All	23464	0	23891	304	0

The all-atom clashscore is defined as the number of clashes found per 1000 atoms (including hydrogen atoms). The all-atom clashscore for this structure is 6.

The worst 5 of 304 close contacts within the same asymmetric unit are listed below, sorted by their clash magnitude.

Atom-1	Atom-2	Interatomic distance (Å)	Clash overlap (Å)
1:D:423:LYS:HD2	1:E:423:LYS:HB2	1.66	0.77
1:D:428:ARG:HB3	1:E:428:ARG:HH11	1.51	0.73
1:F:6:LEU:HD23	1:G:427:GLN:H	1.56	0.69
1:D:6:LEU:HD23	1:E:427:GLN:H	1.57	0.69
1:D:427:GLN:HG2	1:E:428:ARG:HH12	1.56	0.68

There are no symmetry-related clashes.

5.3 Torsion angles [i](#)

5.3.1 Protein backbone [i](#)

In the following table, the Percentiles column shows the percent Ramachandran outliers of the chain as a percentile score with respect to all PDB entries followed by that with respect to all EM entries.

The Analysed column shows the number of residues for which the backbone conformation was analysed, and the total number of residues.

Mol	Chain	Analysed	Favoured	Allowed	Outliers	Percentiles	
1	A	417/433 (96%)	370 (89%)	46 (11%)	1 (0%)	44	72
1	B	417/433 (96%)	370 (89%)	46 (11%)	1 (0%)	44	72
1	C	417/433 (96%)	370 (89%)	46 (11%)	1 (0%)	44	72
1	D	417/433 (96%)	370 (89%)	46 (11%)	1 (0%)	44	72
1	E	417/433 (96%)	370 (89%)	46 (11%)	1 (0%)	44	72
1	F	417/433 (96%)	370 (89%)	46 (11%)	1 (0%)	44	72
1	G	417/433 (96%)	370 (89%)	46 (11%)	1 (0%)	44	72
All	All	2919/3031 (96%)	2590 (89%)	322 (11%)	7 (0%)	45	72

5 of 7 Ramachandran outliers are listed below:

Mol	Chain	Res	Type
1	A	321	PRO
1	B	321	PRO

Continued on next page...

Continued from previous page...

Mol	Chain	Res	Type
1	C	321	PRO
1	D	321	PRO
1	E	321	PRO

5.3.2 Protein sidechains [i](#)

In the following table, the Percentiles column shows the percent sidechain outliers of the chain as a percentile score with respect to all PDB entries followed by that with respect to all EM entries.

The Analysed column shows the number of residues for which the sidechain conformation was analysed, and the total number of residues.

Mol	Chain	Analysed	Rotameric	Outliers	Percentiles	
1	A	376/388 (97%)	376 (100%)	0	100	100
1	B	376/388 (97%)	376 (100%)	0	100	100
1	C	376/388 (97%)	376 (100%)	0	100	100
1	D	376/388 (97%)	376 (100%)	0	100	100
1	E	376/388 (97%)	376 (100%)	0	100	100
1	F	376/388 (97%)	376 (100%)	0	100	100
1	G	376/388 (97%)	376 (100%)	0	100	100
All	All	2632/2716 (97%)	2632 (100%)	0	100	100

There are no protein residues with a non-rotameric sidechain to report.

Sometimes sidechains can be flipped to improve hydrogen bonding and reduce clashes. 5 of 7 such sidechains are listed below:

Mol	Chain	Res	Type
1	D	403	GLN
1	E	403	GLN
1	G	403	GLN
1	F	403	GLN
1	C	403	GLN

5.3.3 RNA [i](#)

There are no RNA molecules in this entry.

5.4 Non-standard residues in protein, DNA, RNA chains [i](#)

There are no non-standard protein/DNA/RNA residues in this entry.

5.5 Carbohydrates [i](#)

There are no oligosaccharides in this entry.

5.6 Ligand geometry [i](#)

There are no ligands in this entry.

5.7 Other polymers [i](#)

There are no such residues in this entry.

5.8 Polymer linkage issues [i](#)

There are no chain breaks in this entry.

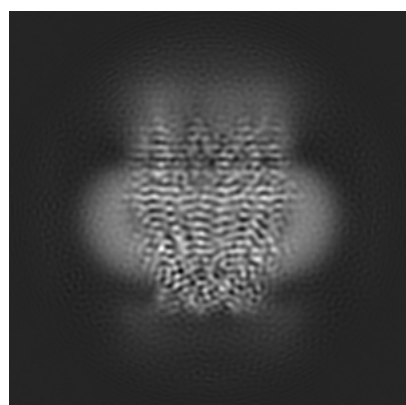
6 Map visualisation [i](#)

This section contains visualisations of the EMDB entry EMD-30880. These allow visual inspection of the internal detail of the map and identification of artifacts.

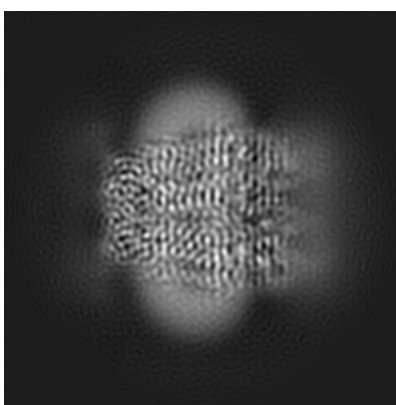
No raw map or half-maps were deposited for this entry and therefore no images, graphs, etc. pertaining to the raw map can be shown.

6.1 Orthogonal projections [i](#)

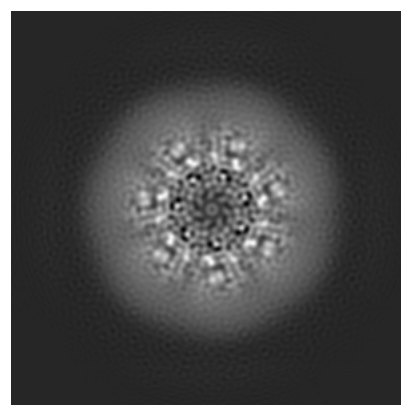
6.1.1 Primary map



X



Y

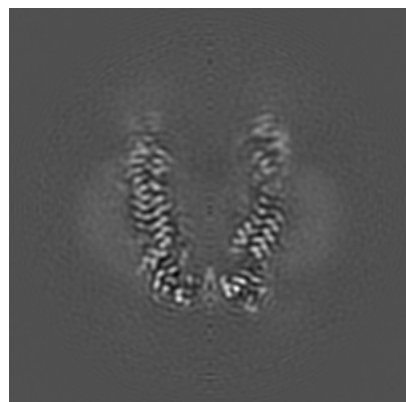


Z

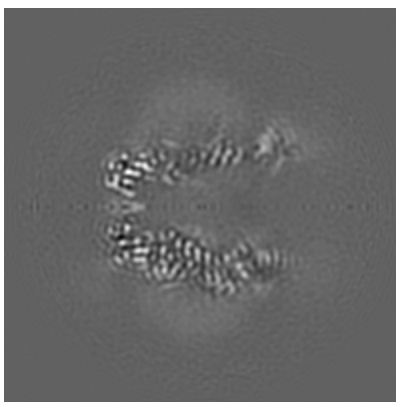
The images above show the map projected in three orthogonal directions.

6.2 Central slices [i](#)

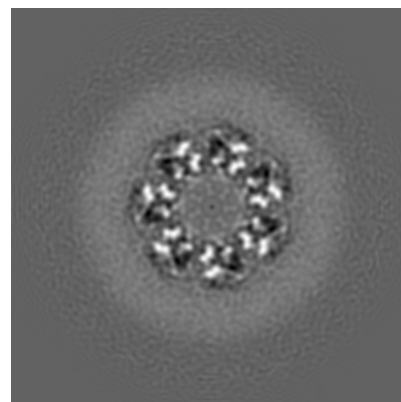
6.2.1 Primary map



X Index: 100



Y Index: 100

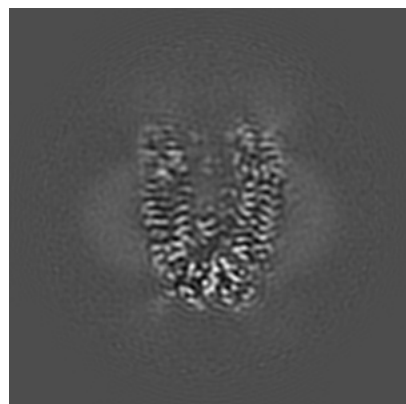


Z Index: 100

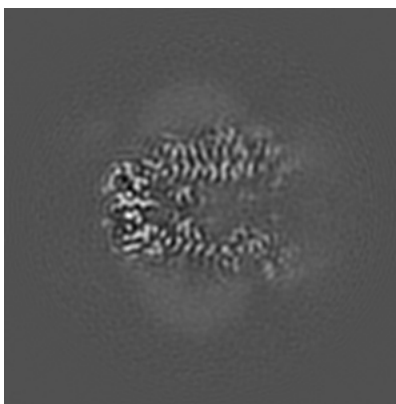
The images above show central slices of the map in three orthogonal directions.

6.3 Largest variance slices [i](#)

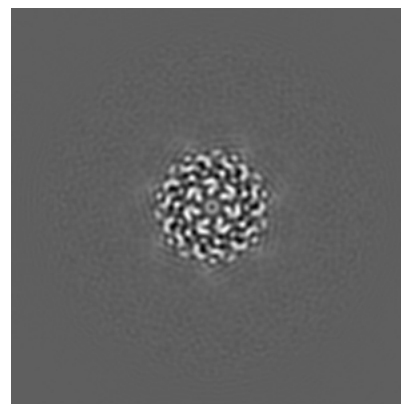
6.3.1 Primary map



X Index: 82



Y Index: 83

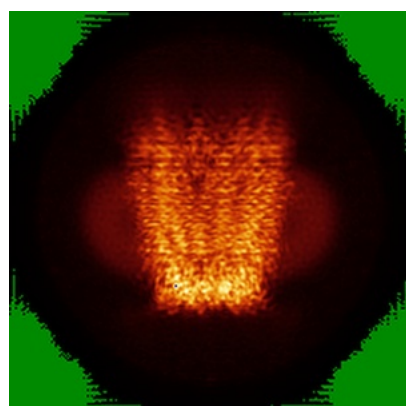


Z Index: 60

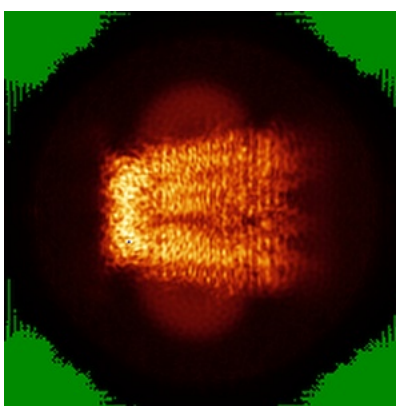
The images above show the largest variance slices of the map in three orthogonal directions.

6.4 Orthogonal standard-deviation projections (False-color) [i](#)

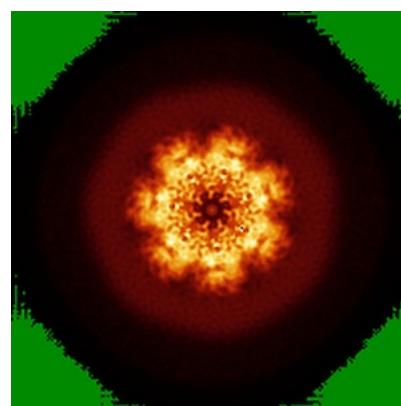
6.4.1 Primary map



X



Y



Z

The images above show the map standard deviation projections with false color in three orthogonal directions. Minimum values are shown in green, max in blue, and dark to light orange shades represent small to large values respectively.

6.5 Orthogonal surface views [i](#)

6.5.1 Primary map



The images above show the 3D surface view of the map at the recommended contour level 0.45. These images, in conjunction with the slice images, may facilitate assessment of whether an appropriate contour level has been provided.

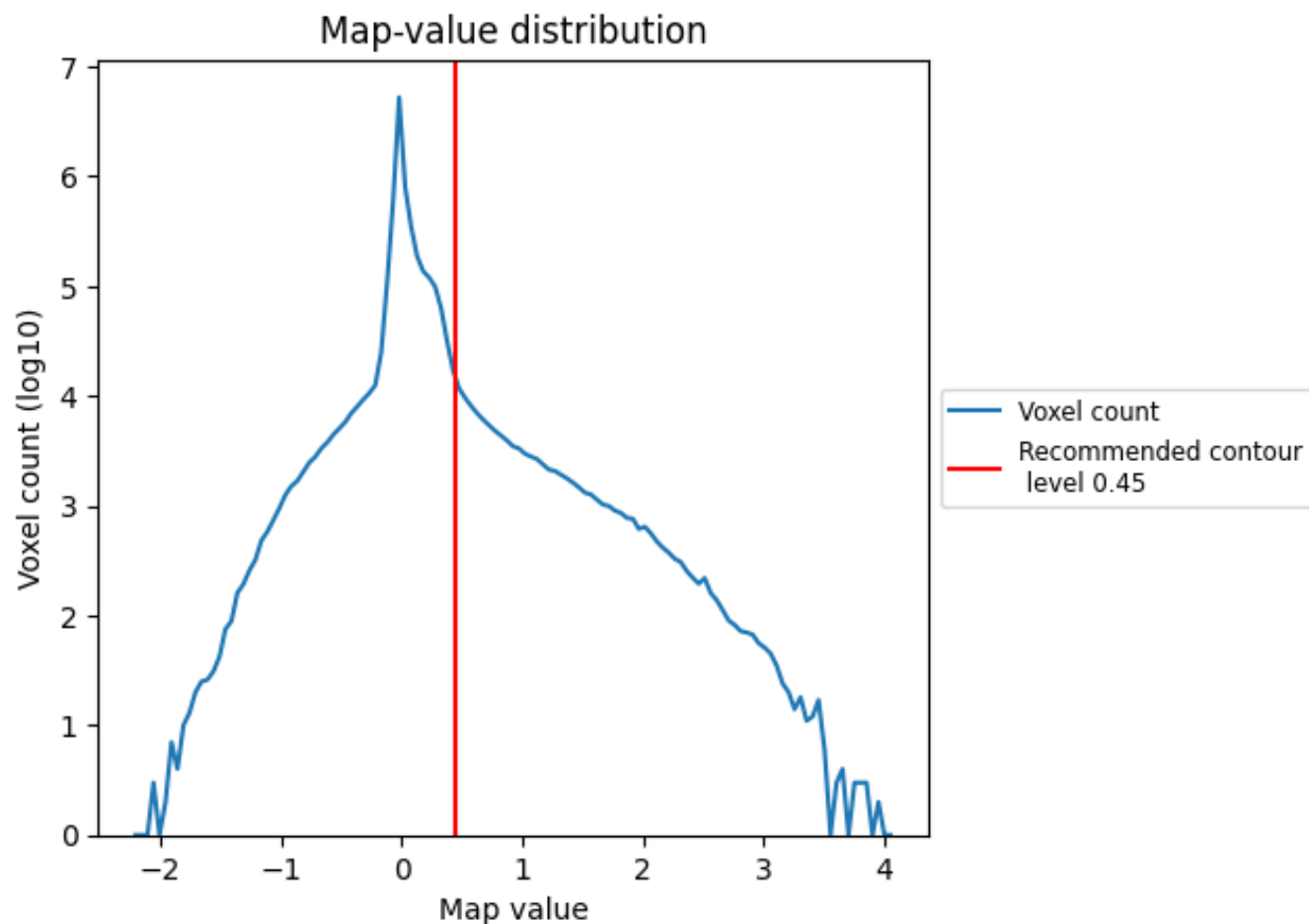
6.6 Mask visualisation [i](#)

This section was not generated. No masks/segmentation were deposited.

7 Map analysis [i](#)

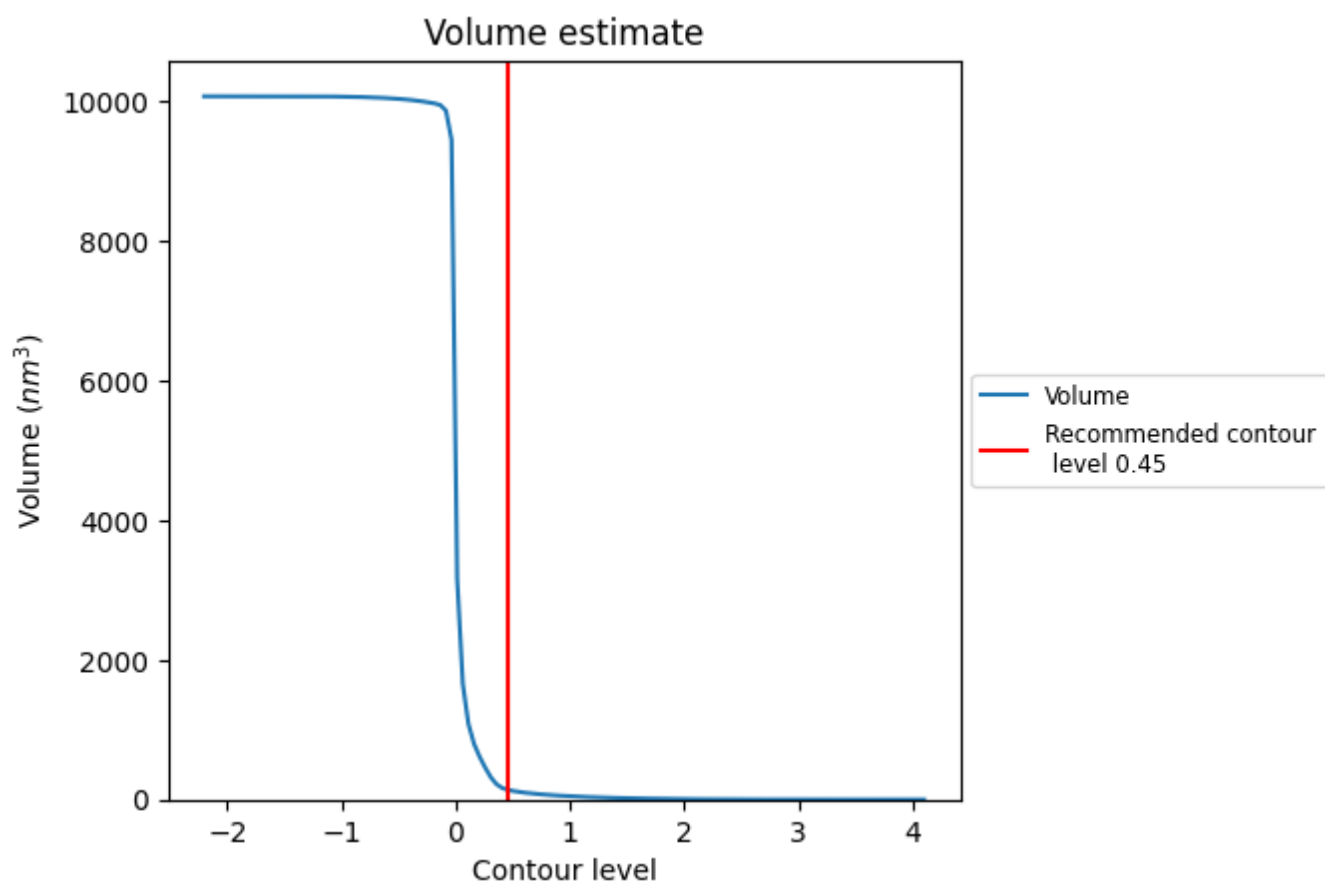
This section contains the results of statistical analysis of the map.

7.1 Map-value distribution [i](#)



The map-value distribution is plotted in 128 intervals along the x-axis. The y-axis is logarithmic. A spike in this graph at zero usually indicates that the volume has been masked.

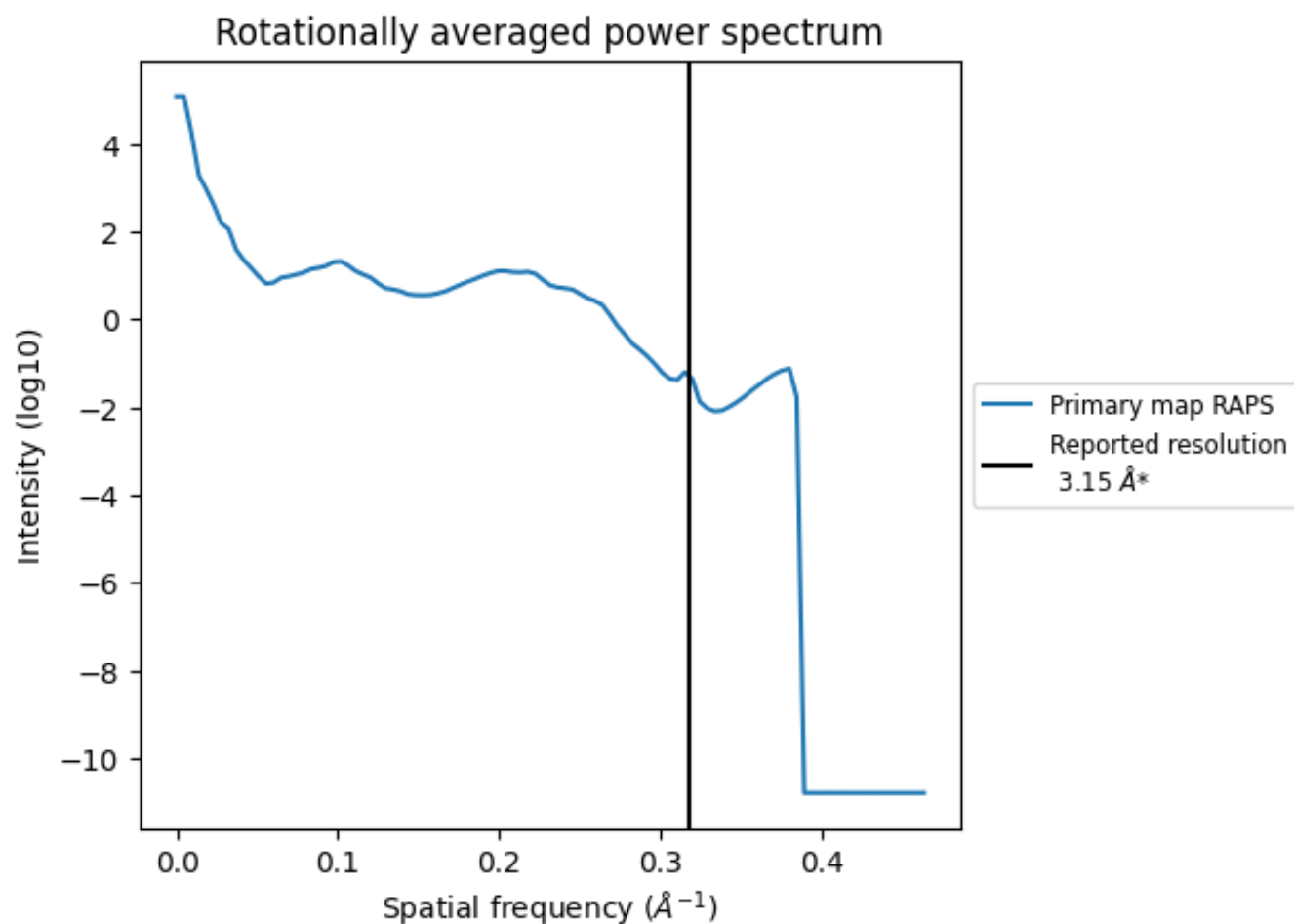
7.2 Volume estimate [i](#)



The volume at the recommended contour level is 142 nm³; this corresponds to an approximate mass of 128 kDa.

The volume estimate graph shows how the enclosed volume varies with the contour level. The recommended contour level is shown as a vertical line and the intersection between the line and the curve gives the volume of the enclosed surface at the given level.

7.3 Rotationally averaged power spectrum ⓘ



*Reported resolution corresponds to spatial frequency of 0.317 Å⁻¹

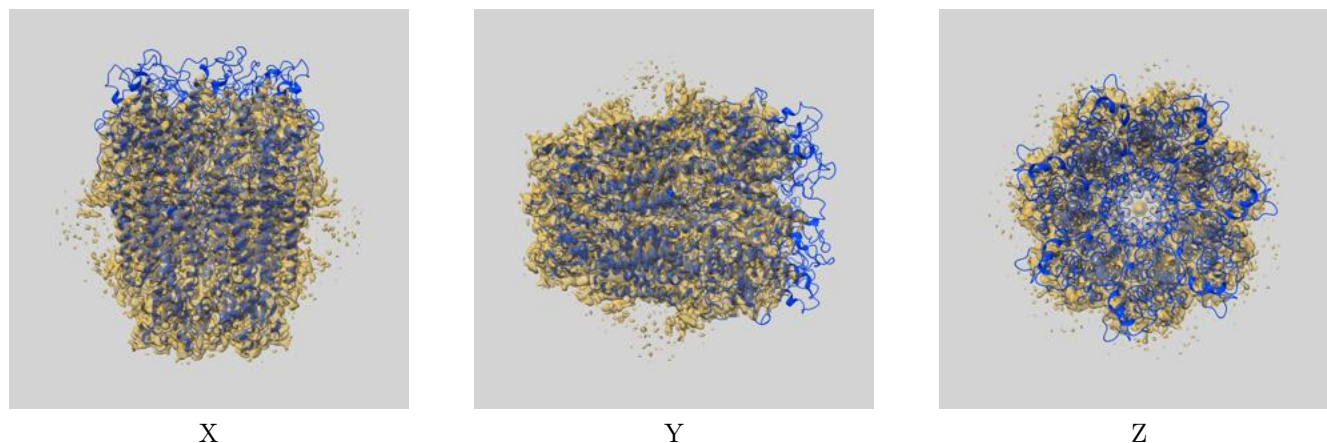
8 Fourier-Shell correlation

This section was not generated. No FSC curve or half-maps provided.

9 Map-model fit [i](#)

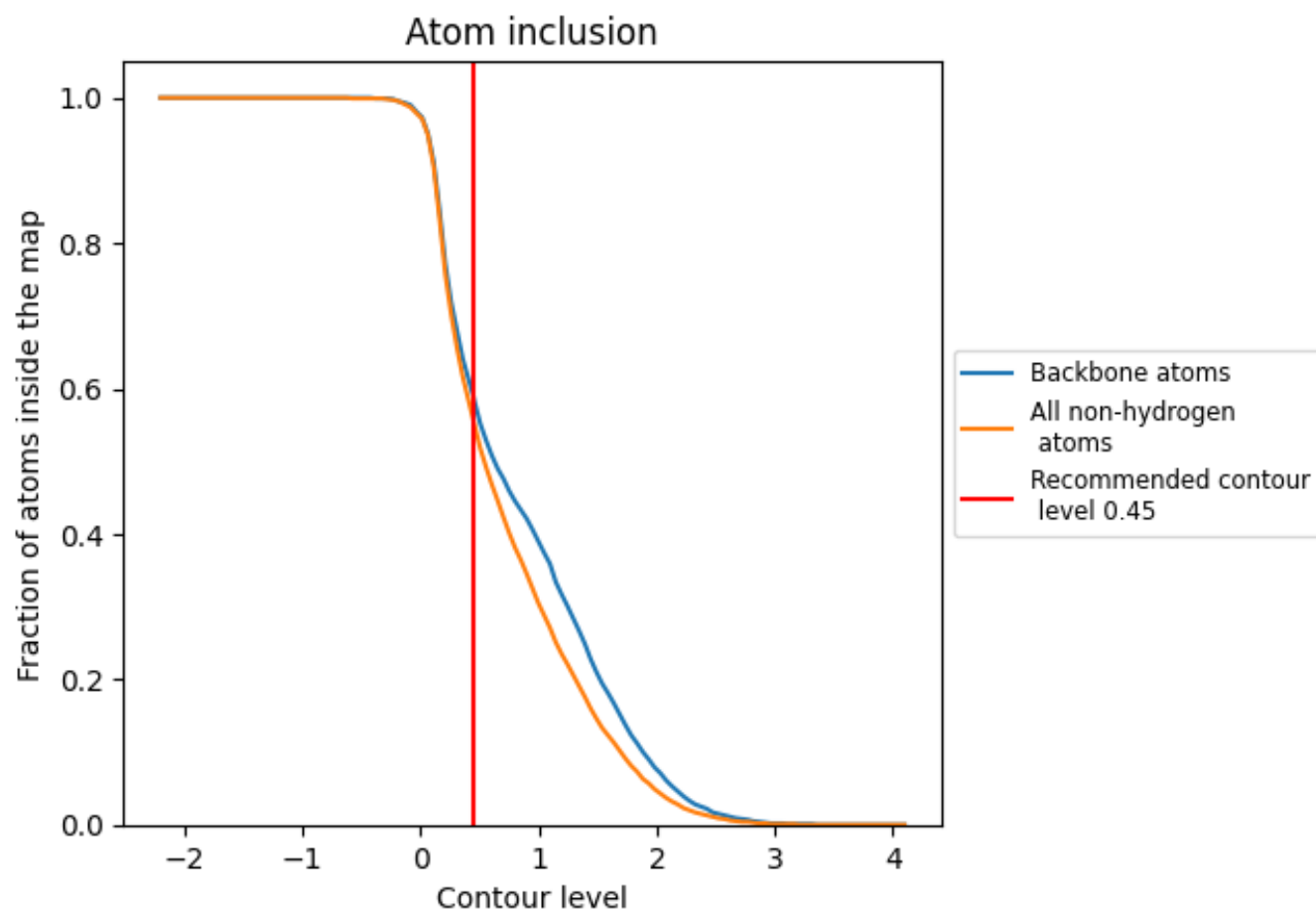
This section contains information regarding the fit between EMDB map EMD-30880 and PDB model 7DWB. Per-residue inclusion information can be found in [section 3](#) on [page 6](#).

9.1 Map-model overlay [i](#)



The images above show the 3D surface view of the map at the recommended contour level 0.45 at 50% transparency in yellow overlaid with a ribbon representation of the model coloured in blue. These images allow for the visual assessment of the quality of fit between the atomic model and the map.

9.4 Atom inclusion [i](#)



At the recommended contour level, 59% of all backbone atoms, 55% of all non-hydrogen atoms, are inside the map.

9.5 Map-model fit summary ⓘ

The table lists the average atom inclusion at the recommended contour level (0.45) and Q-score for the entire model and for each chain.

Chain	Atom inclusion	Q-score
All	<div><div></div></div> 0.5530	<div><div></div></div> 0.3380
A	<div><div></div></div> 0.5530	<div><div></div></div> 0.3370
B	<div><div></div></div> 0.5520	<div><div></div></div> 0.3370
C	<div><div></div></div> 0.5530	<div><div></div></div> 0.3390
D	<div><div></div></div> 0.5540	<div><div></div></div> 0.3380
E	<div><div></div></div> 0.5520	<div><div></div></div> 0.3380
F	<div><div></div></div> 0.5550	<div><div></div></div> 0.3360
G	<div><div></div></div> 0.5550	<div><div></div></div> 0.3380

1.0

0.0

<0.0