



wwPDB EM Validation Summary Report ⓘ

May 18, 2025 – 01:13 AM EDT

PDB ID : 8DZ4 / pdb_00008dz4
EMDB ID : EMD-27788
Title : Cryo-EM structure of 356 Fab in complex with recombinant shortened Plasmodium falciparum circumsporozoite protein (rsCSP)
Authors : Martin, G.M.; Ward, A.B.
Deposited on : 2022-08-06
Resolution : 3.20 Å(reported)

This is a wwPDB EM Validation Summary Report for a publicly released PDB entry.

We welcome your comments at validation@mail.wwpdb.org

A user guide is available at

<https://www.wwpdb.org/validation/2017/EMValidationReportHelp>
with specific help available everywhere you see the ⓘ symbol.

The types of validation reports are described at

<http://www.wwpdb.org/validation/2017/FAQs#types>.

The following versions of software and data (see [references ⓘ](#)) were used in the production of this report:

EMDB validation analysis : 0.0.1.dev118
MolProbity : 4-5-2 with Phenix2.0rc1
Percentile statistics : 20231227.v01 (using entries in the PDB archive December 27th 2023)
MapQ : 1.9.13
Ideal geometry (proteins) : Engh & Huber (2001)
Ideal geometry (DNA, RNA) : Parkinson et al. (1996)
Validation Pipeline (wwPDB-VP) : 2.43.1

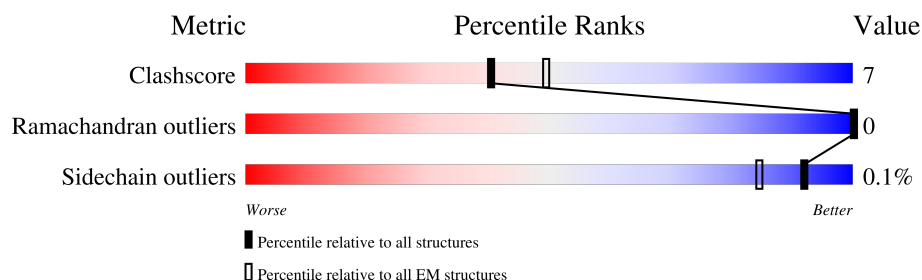
1 Overall quality at a glance

The following experimental techniques were used to determine the structure:

ELECTRON MICROSCOPY

The reported resolution of this entry is 3.20 Å.

Percentile scores (ranging between 0-100) for global validation metrics of the entry are shown in the following graphic. The table shows the number of entries on which the scores are based.





Metric	Whole archive (#Entries)	EM structures (#Entries)
Clashscore	210492	15764
Ramachandran outliers	207382	16835
Sidechain outliers	206894	16415

The table below summarises the geometric issues observed across the polymeric chains and their fit to the map. The red, orange, yellow and green segments of the bar indicate the fraction of residues that contain outliers for ≥ 3 , 2, 1 and 0 types of geometric quality criteria respectively. A grey segment represents the fraction of residues that are not modelled. The numeric value for each fraction is indicated below the corresponding segment, with a dot representing fractions $\leq 5\%$. The upper red bar (where present) indicates the fraction of residues that have poor fit to the EM map (all-atom inclusion $< 40\%$). The numeric value is given above the bar.

Mol	Chain	Length	Quality of chain
1	I	278	
2	B	213	
2	D	213	
2	F	213	
2	L	213	
2	N	213	
2	P	213	
2	R	213	

Continued on next page...

Continued from previous page...

Mol	Chain	Length	Quality of chain
2	T	213	 43%7%50%
2	V	213	 42%8%50%
2	X	213	 36%14%50%
2	Z	213	 42%8%50%
3	A	228	 6%47%7%46%
3	C	228	 47%7%46%
3	E	228	 44%10%46%
3	H	228	 45%9%46%
3	M	228	 44%10%46%
3	O	228	 48%7%46%
3	Q	228	 44%10%46%
3	S	228	 44%11%46%
3	U	228	 44%11%46%
3	W	228	 45%9%46%
3	Y	228	 40%14%46%

2 Entry composition

There are 3 unique types of molecules in this entry. The entry contains 20290 atoms, of which 0 are hydrogens and 0 are deuteriums.

In the tables below, the AltConf column contains the number of residues with at least one atom in alternate conformation and the Trace column contains the number of residues modelled with at most 2 atoms.

- Molecule 1 is a protein called Circumsporozoite protein.

Mol	Chain	Residues	Atoms				AltConf	Trace
1	I	88	Total	C	N	O	0	0
			622	358	128	136		

- Molecule 2 is a protein called 356 Fab light chain.

Mol	Chain	Residues	Atoms					AltConf	Trace
2	L	106	Total	C	N	O	S	0	0
			802	505	139	155	3		
2	B	106	Total	C	N	O	S	0	0
			802	505	139	155	3		
2	D	106	Total	C	N	O	S	0	0
			802	505	139	155	3		
2	F	106	Total	C	N	O	S	0	0
			802	505	139	155	3		
2	N	106	Total	C	N	O	S	0	0
			802	505	139	155	3		
2	P	106	Total	C	N	O	S	0	0
			802	505	139	155	3		
2	R	106	Total	C	N	O	S	0	0
			802	505	139	155	3		
2	T	106	Total	C	N	O	S	0	0
			802	505	139	155	3		
2	V	106	Total	C	N	O	S	0	0
			802	505	139	155	3		
2	X	106	Total	C	N	O	S	0	0
			802	505	139	155	3		
2	Z	106	Total	C	N	O	S	0	0
			802	505	139	155	3		

- Molecule 3 is a protein called 356 Fab heavy chain.

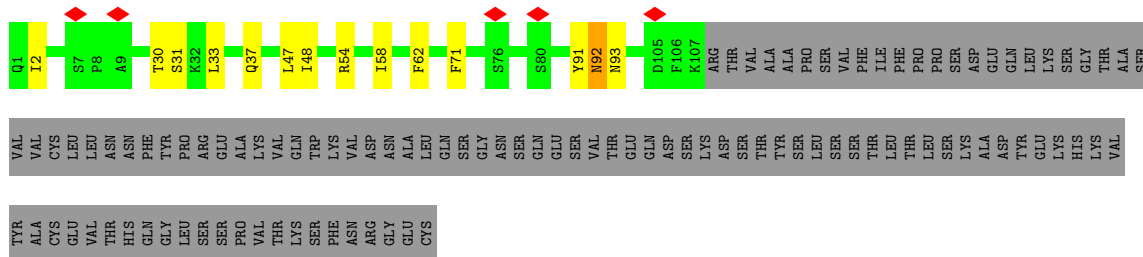
Mol	Chain	Residues	Atoms					AltConf	Trace
3	H	124	Total	C	N	O	S	0	0
			986	623	173	185	5		

Continued on next page...

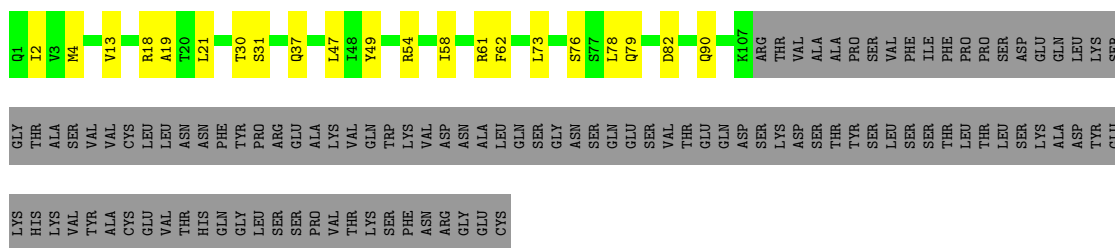
Continued from previous page...

Mol	Chain	Residues	Atoms					AltConf	Trace
3	A	124	Total 986	C 623	N 173	O 185	S 5	0	0
3	C	124	Total 986	C 623	N 173	O 185	S 5	0	0
3	E	124	Total 986	C 623	N 173	O 185	S 5	0	0
3	M	124	Total 986	C 623	N 173	O 185	S 5	0	0
3	O	124	Total 986	C 623	N 173	O 185	S 5	0	0
3	Q	124	Total 986	C 623	N 173	O 185	S 5	0	0
3	S	124	Total 986	C 623	N 173	O 185	S 5	0	0
3	U	124	Total 986	C 623	N 173	O 185	S 5	0	0
3	W	124	Total 986	C 623	N 173	O 185	S 5	0	0
3	Y	124	Total 986	C 623	N 173	O 185	S 5	0	0

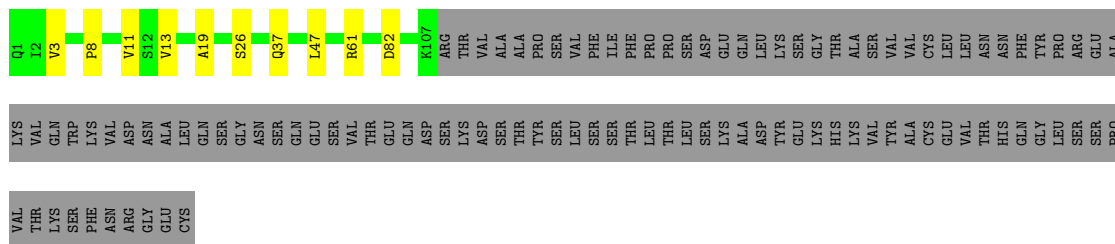
- Molecule 2: 356 Fab light chain



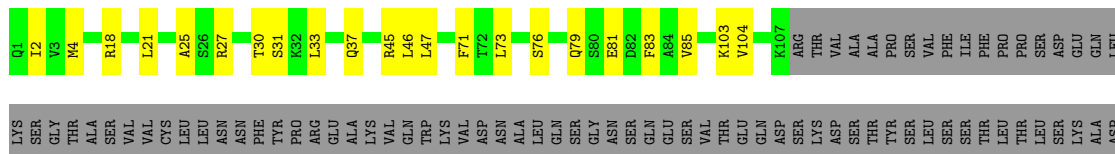
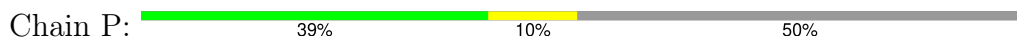
- Molecule 2: 356 Fab light chain



- Molecule 2: 356 Fab light chain



- Molecule 2: 356 Fab light chain



TYR
GLU
LYS
HIS
VAL
VAL
TYR
ALA
CYS

• Molecule 2: 356 Fab light chain

Chain R: 42% 8% 50%

Q1 I2 V3 M4 E17 R18 R27 T30 S31 K32 L33 Q37 L46 L47 R61 F71 S77 D82 Q90 Y91 K107 ARG THR VAL VAL ALA PRO PRO SER SER VAL PHE PHE ILE THR PRO PRO SER ASP GLU GLN LEU LYS SER GLY THR LYS ALA SER VAL VAL CYS LEU

LEU ASN ASN PHE TYR PRO ARG GLU ALA VAL VAL THR LYS TRP LYS VAL ASP ASN ALA LEU GLN SER SER GLY ASN SER SER GLN GLU SER VAL THR GLU GLN ASP THR SER VAL ASP THR TYR SER LEU SER PHE PRO LEU LEU LYS ASP THR TYR LYS HIS THR LYS VAL TYR ALA VAL CYS GLU

VAL THR HIS GLN LEU LEU SER SER PRO VAL THR THR LYS SER PHE ASN ARG GLY CYS

• Molecule 2: 356 Fab light chain

Chain T: 43% 7% 50%

Q1 V13 R18 A19 T30 S31 K32 Q37 Q38 K39 Q42 L46 L47 R61 L78 E81 D82 Y91 K107 ARG THR VAL ALA THR ALA PRO SER SER VAL PHE PHE ILE THR PRO PRO SER ASP GLU GLN LYS LEU LYS GLY THR LYS ALA SER VAL VAL CYS LEU ASN

ASN PHE TYR PRO ARG GLU ALA LYS VAL VAL TRP LYS VAL ASP ASN ALA LEU GLN SER GLY ASN SER GLN GLU SER VAL THR THR GLU GLN ASP SER LYS ASP SER THR THR ALA THR TYR SER SER LEU SER SER THR LEU SER LYS ALA ASP TYR LYS THR HIS LYS VAL TYR ALA CYS GLU THR

HIS GLN GLY LEU SER SER PRO VAL THR LYS SER PHE ASN ARG GLY CYS

• Molecule 2: 356 Fab light chain

Chain V: 42% 8% 50%

Q1 M4 V13 E17 R18 A19 T20 L21 L33 Q37 L47 R61 F71 T72 L73 T74 L78 E81 D82 K107 ARG THR VAL ALA ALA PRO SER SER VAL PHE PHE ILE THR PRO PRO SER ASP GLU GLN LEU LYS SER GLY THR LYS ALA SER VAL VAL CYS LEU

ASN ASN PHE TYR PRO ARG GLU ALA LYS VAL VAL TRP LYS VAL ASP ASN ALA LEU GLN SER GLY ASN SER GLN GLU SER VAL THR THR GLU GLN ASP SER LYS SER SER THR THR ALA THR TYR SER SER LEU LEU LYS ALA ASP TYR LYS GLY THR HIS LYS VAL TYR ALA CYS GLU VAL

THR HIS GLN GLY LEU SER SER PRO VAL THR THR LYS SER PHE ASN ARG GLY CYS

• Molecule 2: 356 Fab light chain

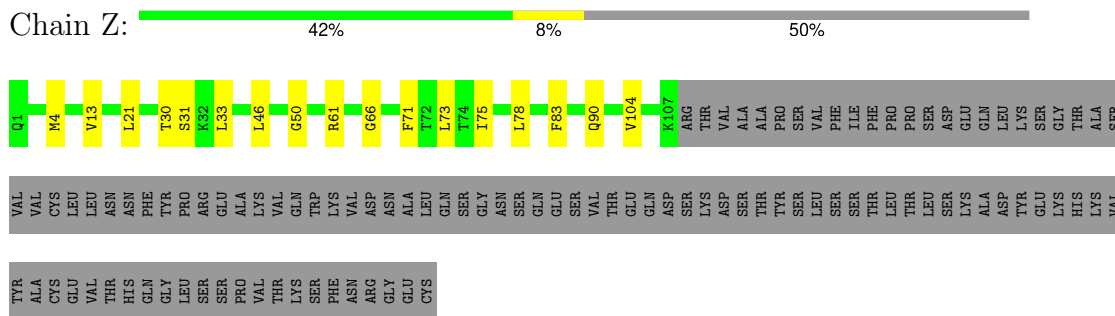
Chain X: 36% 14% 50%

Q1 Q6 S7 P8 V13 S14 E17 R18 L21 L29 V29 T30 S31 K32 L33 Q37 Q38 P44 L47 R61 F71 T72 L73 T75 L78 S80 E81 D82 F83 A84 Q90 P100 G101 T102 D105 F106 K107 ARG THR VAL ALA PRO VAL

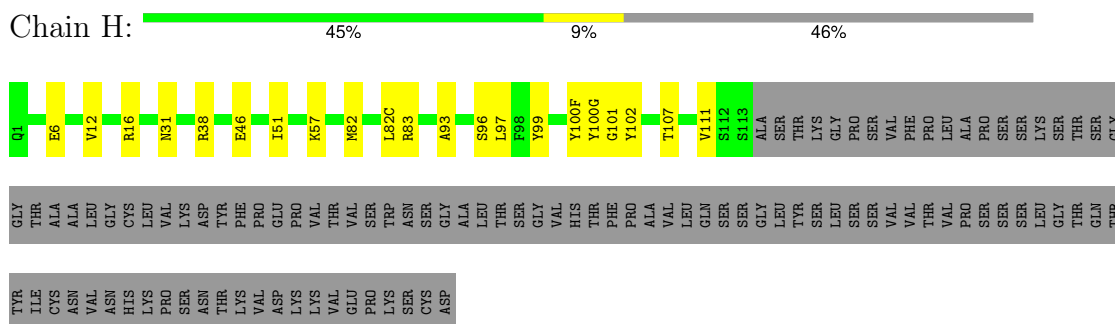
PHE ILE PHE PRO PRO SER ASP GLU GLN VAL THR LYS SER GLY THR LYS VAL SER THR VAL VAL CYS LEU LEU VAL THR THR GLN ASP THR THR VAL VAL CYS GLU VAL THR THR GLN ASP THR THR VAL VAL CYS GLU VAL

SER SER THR LEU THR LEU SER SER LYS ALA ASP TYR GLY HIS LYS VAL VAL TYR VAL ALA VAL CYS GLU VAL VAL THR THR HIS GLN GLY LEU SER SER PRO VAL THR THR VAL THR ARG GLY GLU CYS

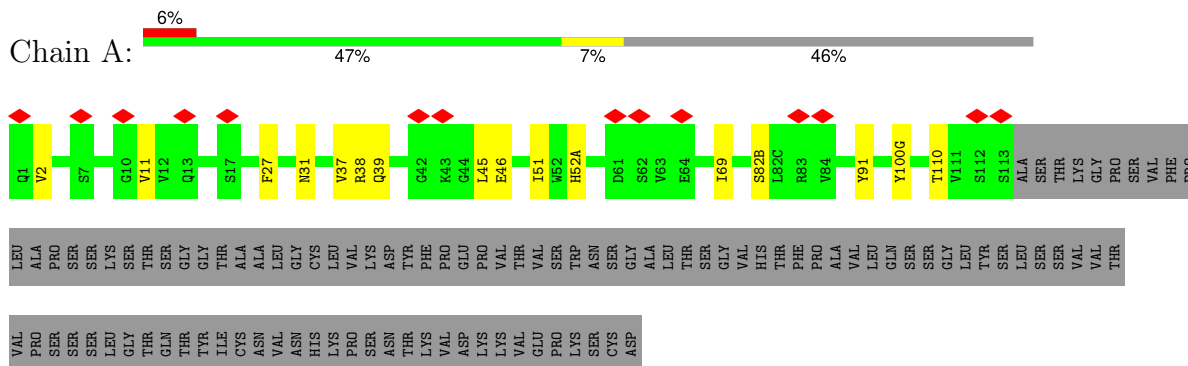
- Molecule 2: 356 Fab light chain



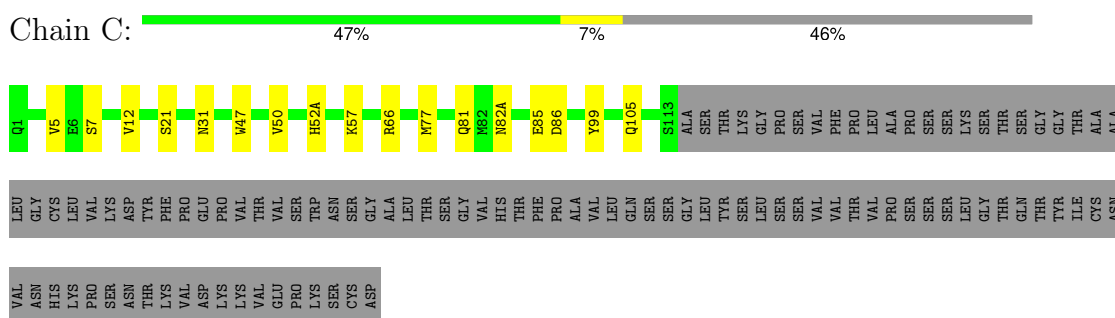
- Molecule 3: 356 Fab heavy chain



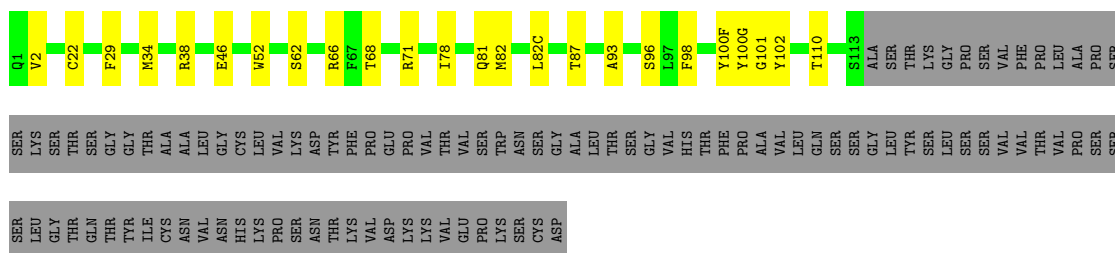
- Molecule 3: 356 Fab heavy chain



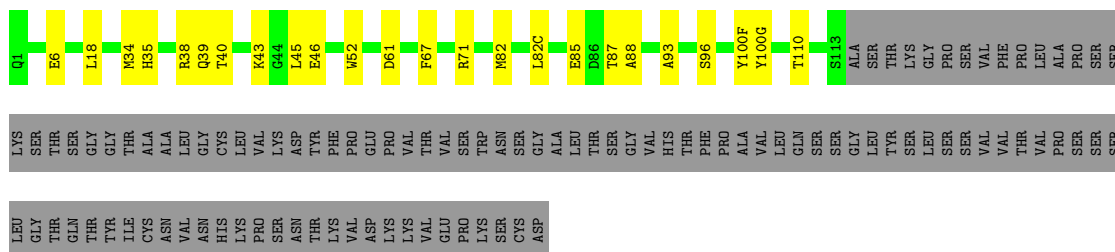
- Molecule 3: 356 Fab heavy chain



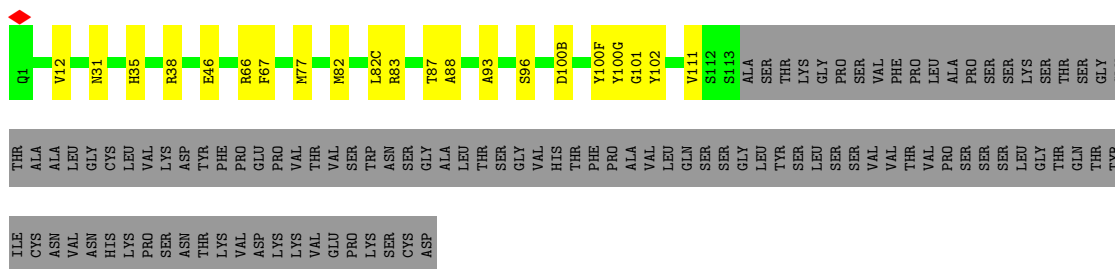
- Molecule 3: 356 Fab heavy chain



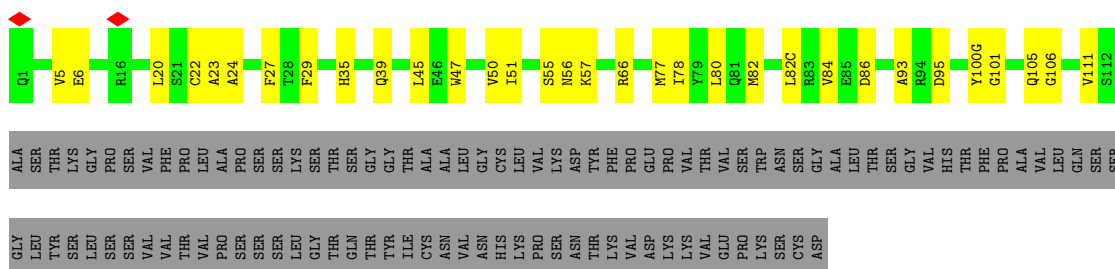
- Molecule 3: 356 Fab heavy chain



- Molecule 3: 356 Fab heavy chain



- Molecule 3: 356 Fab heavy chain



4 Experimental information

Property	Value	Source
EM reconstruction method	SINGLE PARTICLE	Depositor
Imposed symmetry	POINT, Not provided	
Number of particles used	189641	Depositor
Resolution determination method	FSC 0.143 CUT-OFF	Depositor
CTF correction method	PHASE FLIPPING AND AMPLITUDE CORRECTION	Depositor
Microscope	FEI TALOS ARCTICA	Depositor
Voltage (kV)	200	Depositor
Electron dose ($e^-/\text{\AA}^2$)	50	Depositor
Minimum defocus (nm)	500	Depositor
Maximum defocus (nm)	1500	Depositor
Magnification	Not provided	
Image detector	GATAN K2 SUMMIT (4k x 4k)	Depositor
Maximum map value	4.276	Depositor
Minimum map value	-2.170	Depositor
Average map value	-0.011	Depositor
Map value standard deviation	0.156	Depositor
Recommended contour level	0.4	Depositor
Map size (Å)	253.0, 253.0, 253.0	wwPDB
Map dimensions	220, 220, 220	wwPDB
Map angles (°)	90.0, 90.0, 90.0	wwPDB
Pixel spacing (Å)	1.15, 1.15, 1.15	Depositor

5 Model quality

5.1 Standard geometry

The Z score for a bond length (or angle) is the number of standard deviations the observed value is removed from the expected value. A bond length (or angle) with $|Z| > 5$ is considered an outlier worth inspection. RMSZ is the root-mean-square of all Z scores of the bond lengths (or angles).

Mol	Chain	Bond lengths		Bond angles	
		RMSZ	# Z >5	RMSZ	# Z >5
1	I	0.12	0/643	0.29	0/908
2	B	0.12	0/820	0.32	0/1111
2	D	0.10	0/820	0.30	0/1111
2	F	0.12	0/820	0.34	0/1111
2	L	0.11	0/820	0.36	0/1111
2	N	0.16	0/820	0.33	0/1111
2	P	0.13	0/820	0.36	0/1111
2	R	0.13	0/820	0.39	1/1111 (0.1%)
2	T	0.13	0/820	0.40	1/1111 (0.1%)
2	V	0.13	0/820	0.35	0/1111
2	X	0.15	0/820	0.40	0/1111
2	Z	0.12	0/820	0.36	0/1111
3	A	0.10	0/1012	0.27	0/1370
3	C	0.12	0/1012	0.33	0/1370
3	E	0.13	0/1012	0.32	0/1370
3	H	0.13	0/1012	0.32	0/1370
3	M	0.12	0/1012	0.30	0/1370
3	O	0.12	0/1012	0.29	0/1370
3	Q	0.11	0/1012	0.30	0/1370
3	S	0.11	0/1012	0.29	0/1370
3	U	0.11	0/1012	0.29	0/1370
3	W	0.12	0/1012	0.31	0/1370
3	Y	0.13	0/1012	0.33	0/1370
All	All	0.12	0/20795	0.33	2/28199 (0.0%)

There are no bond length outliers.

All (2) bond angle outliers are listed below:

Mol	Chain	Res	Type	Atoms	Z	Observed(°)	Ideal(°)
2	T	30	THR	CB-CA-C	-5.15	110.22	117.23
2	R	30	THR	CB-CA-C	-5.14	110.23	117.23

There are no chirality outliers.

There are no planarity outliers.

5.2 Too-close contacts

In the following table, the Non-H and H(model) columns list the number of non-hydrogen atoms and hydrogen atoms in the chain respectively. The H(added) column lists the number of hydrogen atoms added and optimized by MolProbity. The Clashes column lists the number of clashes within the asymmetric unit, whereas Symm-Clashes lists symmetry-related clashes.

Mol	Chain	Non-H	H(model)	H(added)	Clashes	Symm-Clashes
1	I	622	0	534	7	0
2	B	802	0	788	11	0
2	D	802	0	788	9	0
2	F	802	0	788	13	0
2	L	802	0	788	8	0
2	N	802	0	788	5	0
2	P	802	0	788	15	0
2	R	802	0	788	11	0
2	T	802	0	788	9	0
2	V	802	0	788	11	0
2	X	802	0	788	19	0
2	Z	802	0	788	11	0
3	A	986	0	927	10	0
3	C	986	0	927	13	0
3	E	986	0	927	16	0
3	H	986	0	927	14	0
3	M	986	0	927	15	0
3	O	986	0	927	12	0
3	Q	986	0	927	15	0
3	S	986	0	927	15	0
3	U	986	0	927	18	0
3	W	986	0	927	15	0
3	Y	986	0	927	22	0
All	All	20290	0	19399	269	0

The all-atom clashscore is defined as the number of clashes found per 1000 atoms (including hydrogen atoms). The all-atom clashscore for this structure is 7.

The worst 5 of 269 close contacts within the same asymmetric unit are listed below, sorted by their clash magnitude.

Atom-1	Atom-2	Interatomic distance (Å)	Clash overlap (Å)
3:O:87:THR:HG22	3:O:111:VAL:H	1.45	0.80

Continued on next page...

Continued from previous page...

Atom-1	Atom-2	Interatomic distance (Å)	Clash overlap (Å)
3:E:12:VAL:HG12	2:R:18:ARG:HH22	1.52	0.75
3:C:5:VAL:HG12	3:C:105:GLN:HE22	1.52	0.74
3:S:82:MET:HE2	3:S:82(C):LEU:HD21	1.74	0.70
2:B:89:GLN:HE22	3:A:100(G):TYR:HE2	1.40	0.70

There are no symmetry-related clashes.

5.3 Torsion angles [i](#)

5.3.1 Protein backbone [i](#)

In the following table, the Percentiles column shows the percent Ramachandran outliers of the chain as a percentile score with respect to all PDB entries followed by that with respect to all EM entries.

The Analysed column shows the number of residues for which the backbone conformation was analysed, and the total number of residues.

Mol	Chain	Analysed	Favoured	Allowed	Outliers	Percentiles	
1	I	86/278 (31%)	86 (100%)	0	0	100	100
2	B	104/213 (49%)	99 (95%)	5 (5%)	0	100	100
2	D	104/213 (49%)	100 (96%)	4 (4%)	0	100	100
2	F	104/213 (49%)	100 (96%)	4 (4%)	0	100	100
2	L	104/213 (49%)	99 (95%)	5 (5%)	0	100	100
2	N	104/213 (49%)	100 (96%)	4 (4%)	0	100	100
2	P	104/213 (49%)	98 (94%)	6 (6%)	0	100	100
2	R	104/213 (49%)	100 (96%)	4 (4%)	0	100	100
2	T	104/213 (49%)	98 (94%)	6 (6%)	0	100	100
2	V	104/213 (49%)	100 (96%)	4 (4%)	0	100	100
2	X	104/213 (49%)	101 (97%)	3 (3%)	0	100	100
2	Z	104/213 (49%)	96 (92%)	8 (8%)	0	100	100
3	A	122/228 (54%)	121 (99%)	1 (1%)	0	100	100
3	C	122/228 (54%)	118 (97%)	4 (3%)	0	100	100
3	E	122/228 (54%)	120 (98%)	2 (2%)	0	100	100
3	H	122/228 (54%)	121 (99%)	1 (1%)	0	100	100

Continued on next page...

Continued from previous page...

Mol	Chain	Analysed	Favoured	Allowed	Outliers	Percentiles	
3	M	122/228 (54%)	120 (98%)	2 (2%)	0	100	100
3	O	122/228 (54%)	121 (99%)	1 (1%)	0	100	100
3	Q	122/228 (54%)	119 (98%)	3 (2%)	0	100	100
3	S	122/228 (54%)	120 (98%)	2 (2%)	0	100	100
3	U	122/228 (54%)	121 (99%)	1 (1%)	0	100	100
3	W	122/228 (54%)	120 (98%)	2 (2%)	0	100	100
3	Y	122/228 (54%)	120 (98%)	2 (2%)	0	100	100
All	All	2572/5129 (50%)	2498 (97%)	74 (3%)	0	100	100

There are no Ramachandran outliers to report.

5.3.2 Protein sidechains ⓘ

In the following table, the Percentiles column shows the percent sidechain outliers of the chain as a percentile score with respect to all PDB entries followed by that with respect to all EM entries.

The Analysed column shows the number of residues for which the sidechain conformation was analysed, and the total number of residues.

Mol	Chain	Analysed	Rotameric	Outliers	Percentiles	
1	I	69/240 (29%)	69 (100%)	0	100	100
2	B	87/183 (48%)	87 (100%)	0	100	100
2	D	87/183 (48%)	86 (99%)	1 (1%)	70	86
2	F	87/183 (48%)	87 (100%)	0	100	100
2	L	87/183 (48%)	87 (100%)	0	100	100
2	N	87/183 (48%)	87 (100%)	0	100	100
2	P	87/183 (48%)	87 (100%)	0	100	100
2	R	87/183 (48%)	87 (100%)	0	100	100
2	T	87/183 (48%)	87 (100%)	0	100	100
2	V	87/183 (48%)	86 (99%)	1 (1%)	70	86
2	X	87/183 (48%)	87 (100%)	0	100	100
2	Z	87/183 (48%)	87 (100%)	0	100	100
3	A	104/194 (54%)	104 (100%)	0	100	100
3	C	104/194 (54%)	104 (100%)	0	100	100

Continued on next page...

Continued from previous page...

Mol	Chain	Analysed	Rotameric	Outliers	Percentiles	
3	E	104/194 (54%)	104 (100%)	0	100	100
3	H	104/194 (54%)	104 (100%)	0	100	100
3	M	104/194 (54%)	104 (100%)	0	100	100
3	O	104/194 (54%)	104 (100%)	0	100	100
3	Q	104/194 (54%)	104 (100%)	0	100	100
3	S	104/194 (54%)	104 (100%)	0	100	100
3	U	104/194 (54%)	104 (100%)	0	100	100
3	W	104/194 (54%)	104 (100%)	0	100	100
3	Y	104/194 (54%)	104 (100%)	0	100	100
All	All	2170/4387 (50%)	2168 (100%)	2 (0%)	92	98

All (2) residues with a non-rotameric sidechain are listed below:

Mol	Chain	Res	Type
2	D	92	ASN
2	V	81	GLU

Sometimes sidechains can be flipped to improve hydrogen bonding and reduce clashes. 5 of 15 such sidechains are listed below:

Mol	Chain	Res	Type
3	O	13	GLN
2	Z	92	ASN
2	R	6	GLN
3	Y	105	GLN
2	V	79	GLN

5.3.3 RNA ⓘ

There are no RNA molecules in this entry.

5.4 Non-standard residues in protein, DNA, RNA chains ⓘ

There are no non-standard protein/DNA/RNA residues in this entry.

5.5 Carbohydrates [i](#)

There are no oligosaccharides in this entry.

5.6 Ligand geometry [i](#)

There are no ligands in this entry.

5.7 Other polymers [i](#)

There are no such residues in this entry.

5.8 Polymer linkage issues [i](#)

There are no chain breaks in this entry.

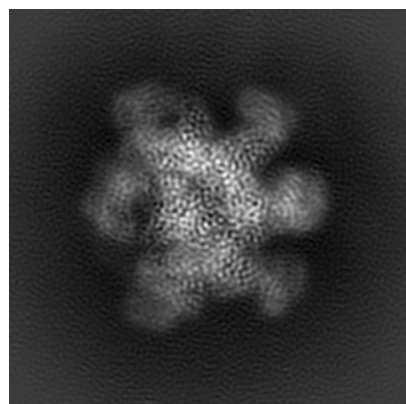
6 Map visualisation [i](#)

This section contains visualisations of the EMDB entry EMD-27788. These allow visual inspection of the internal detail of the map and identification of artifacts.

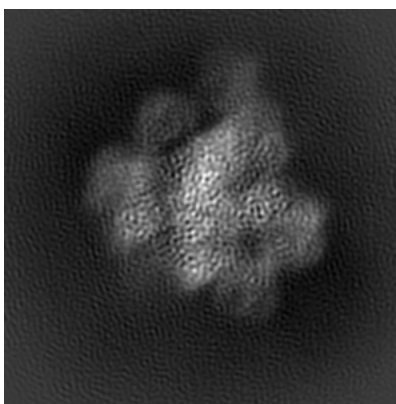
Images derived from a raw map, generated by summing the deposited half-maps, are presented below the corresponding image components of the primary map to allow further visual inspection and comparison with those of the primary map.

6.1 Orthogonal projections [i](#)

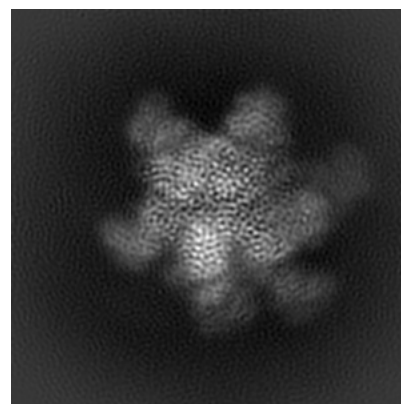
6.1.1 Primary map



X

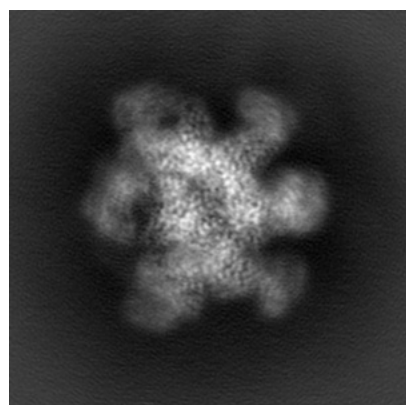


Y

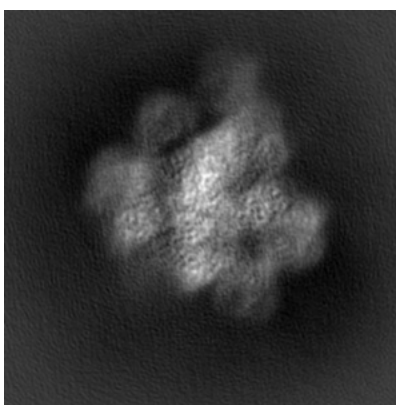


Z

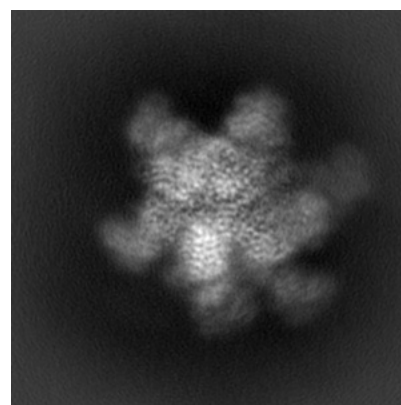
6.1.2 Raw map



X



Y

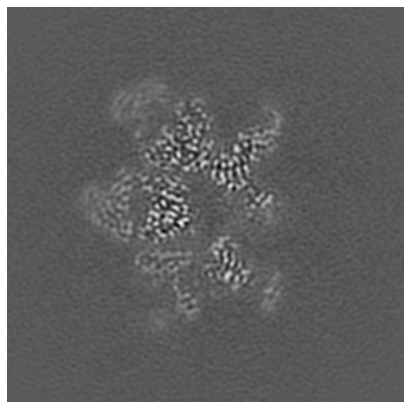


Z

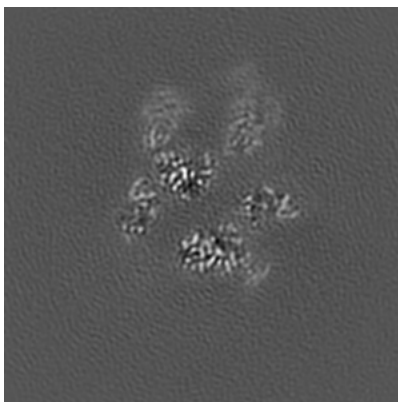
The images above show the map projected in three orthogonal directions.

6.2 Central slices [i](#)

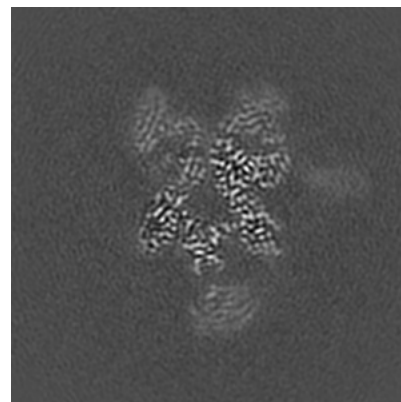
6.2.1 Primary map



X Index: 110

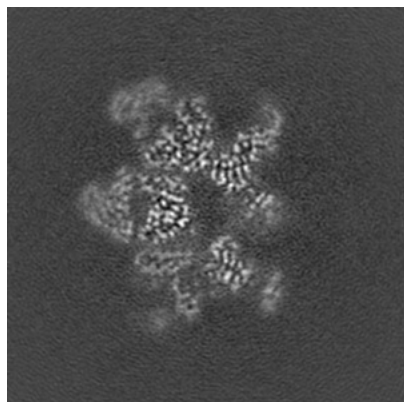


Y Index: 110

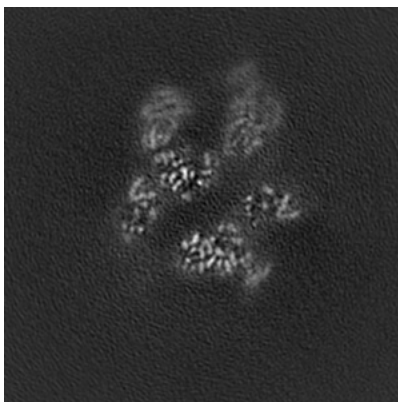


Z Index: 110

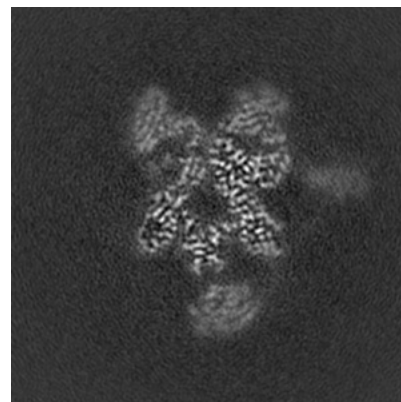
6.2.2 Raw map



X Index: 110



Y Index: 110

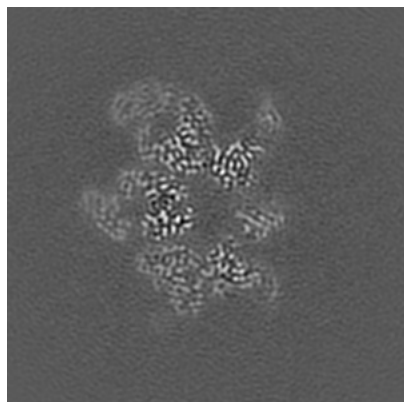


Z Index: 110

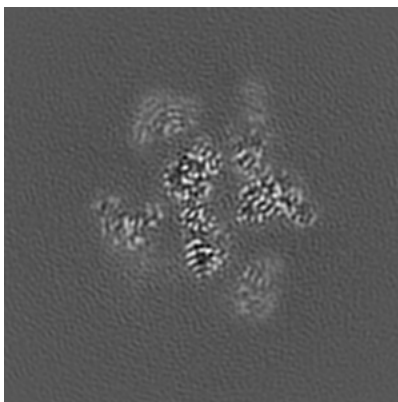
The images above show central slices of the map in three orthogonal directions.

6.3 Largest variance slices [i](#)

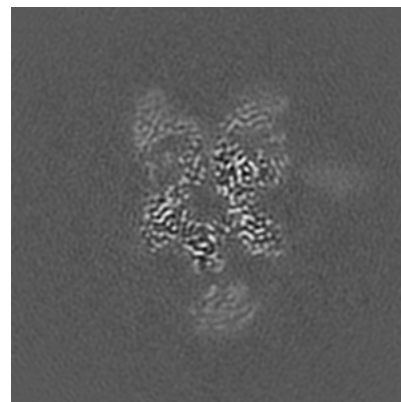
6.3.1 Primary map



X Index: 107

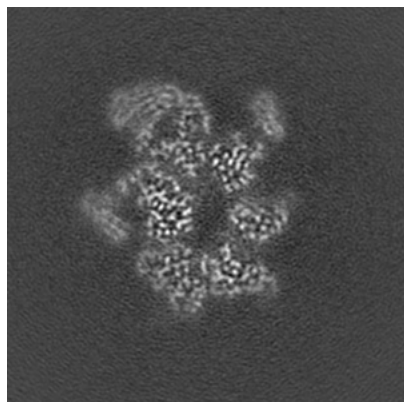


Y Index: 100

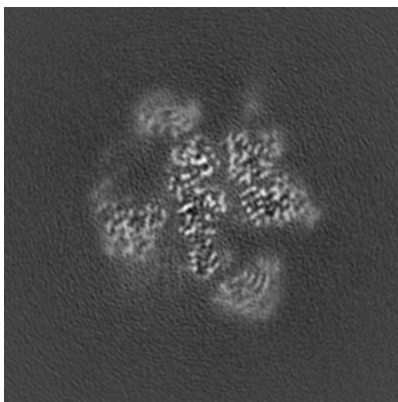


Z Index: 109

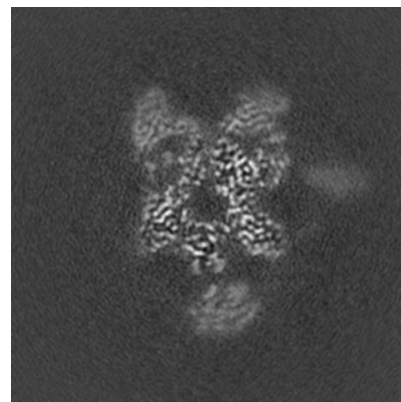
6.3.2 Raw map



X Index: 104



Y Index: 96

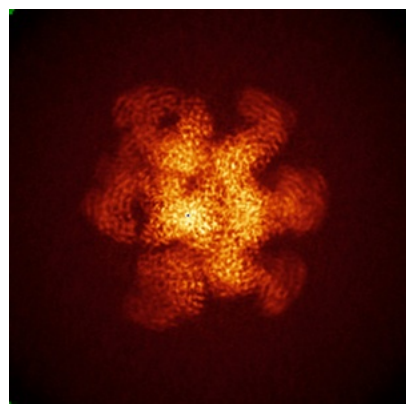


Z Index: 109

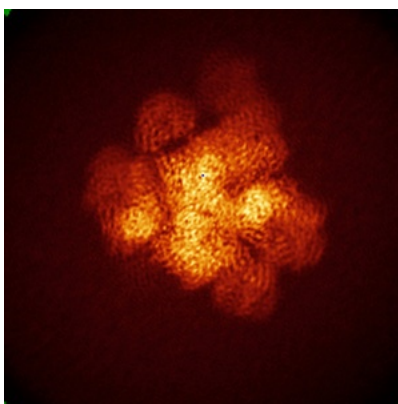
The images above show the largest variance slices of the map in three orthogonal directions.

6.4 Orthogonal standard-deviation projections (False-color) [i](#)

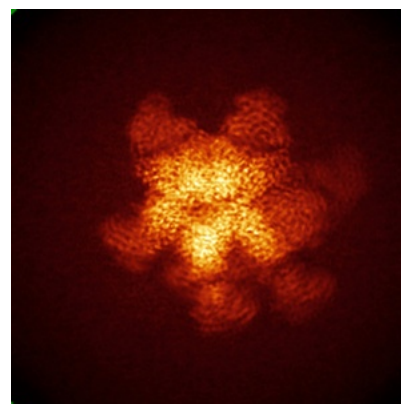
6.4.1 Primary map



X

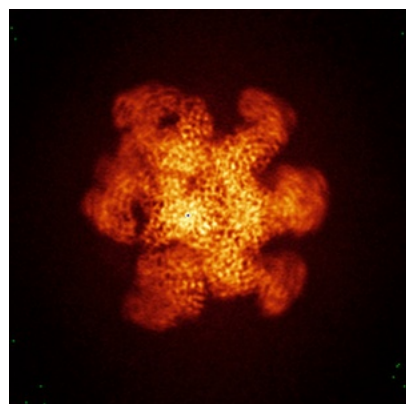


Y

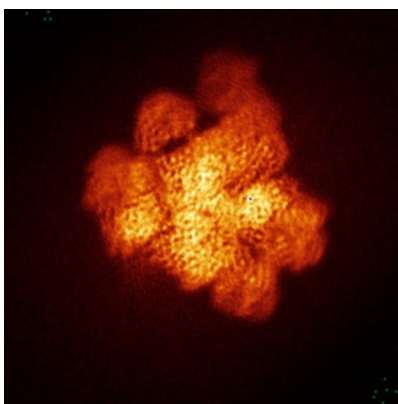


Z

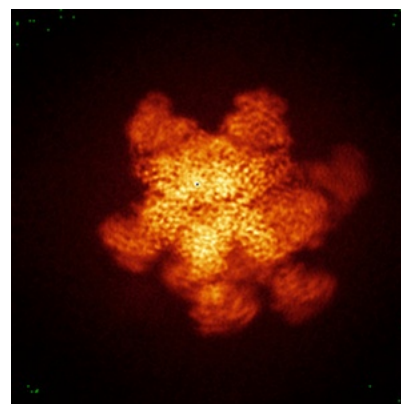
6.4.2 Raw map



X



Y

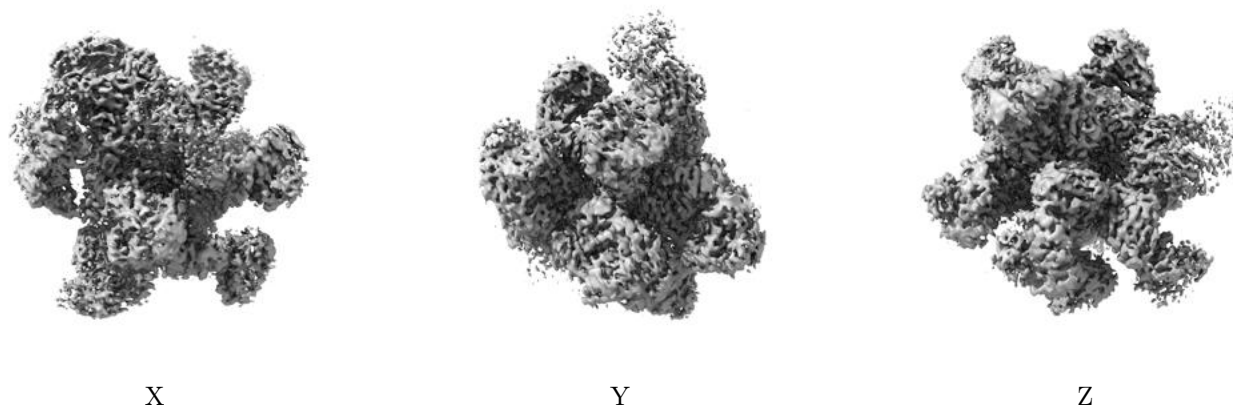


Z

The images above show the map standard deviation projections with false color in three orthogonal directions. Minimum values are shown in green, max in blue, and dark to light orange shades represent small to large values respectively.

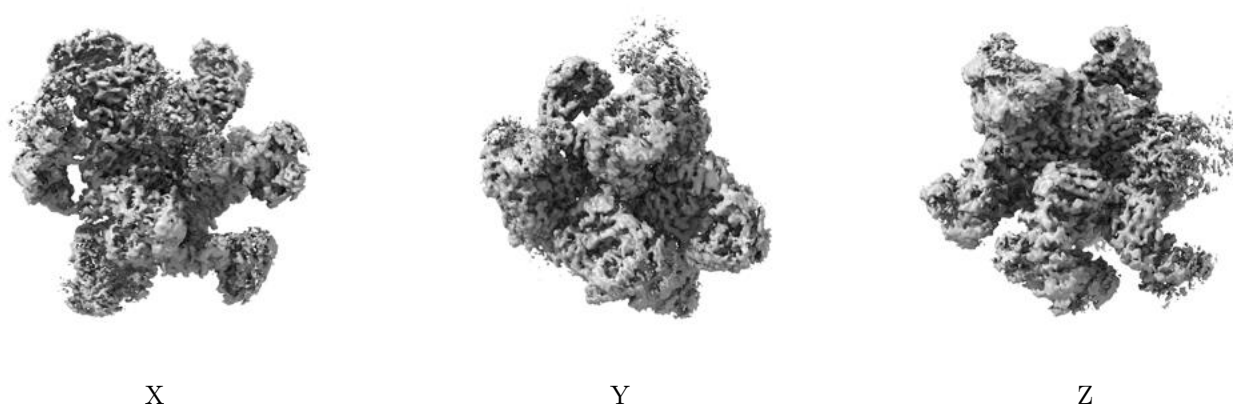
6.5 Orthogonal surface views [i](#)

6.5.1 Primary map



The images above show the 3D surface view of the map at the recommended contour level 0.4. These images, in conjunction with the slice images, may facilitate assessment of whether an appropriate contour level has been provided.

6.5.2 Raw map



These images show the 3D surface of the raw map. The raw map's contour level was selected so that its surface encloses the same volume as the primary map does at its recommended contour level.

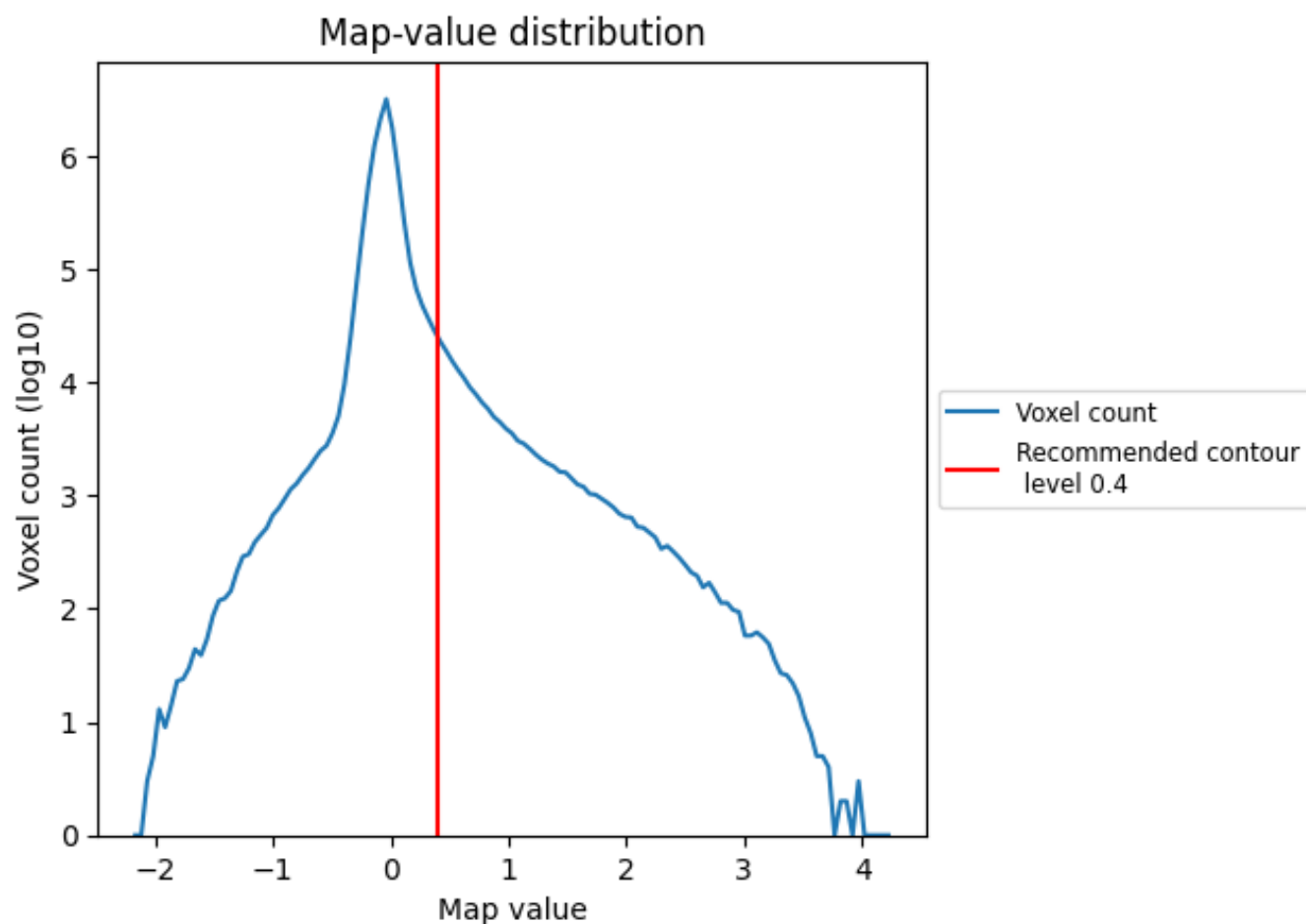
6.6 Mask visualisation [i](#)

This section was not generated. No masks/segmentation were deposited.

7 Map analysis [i](#)

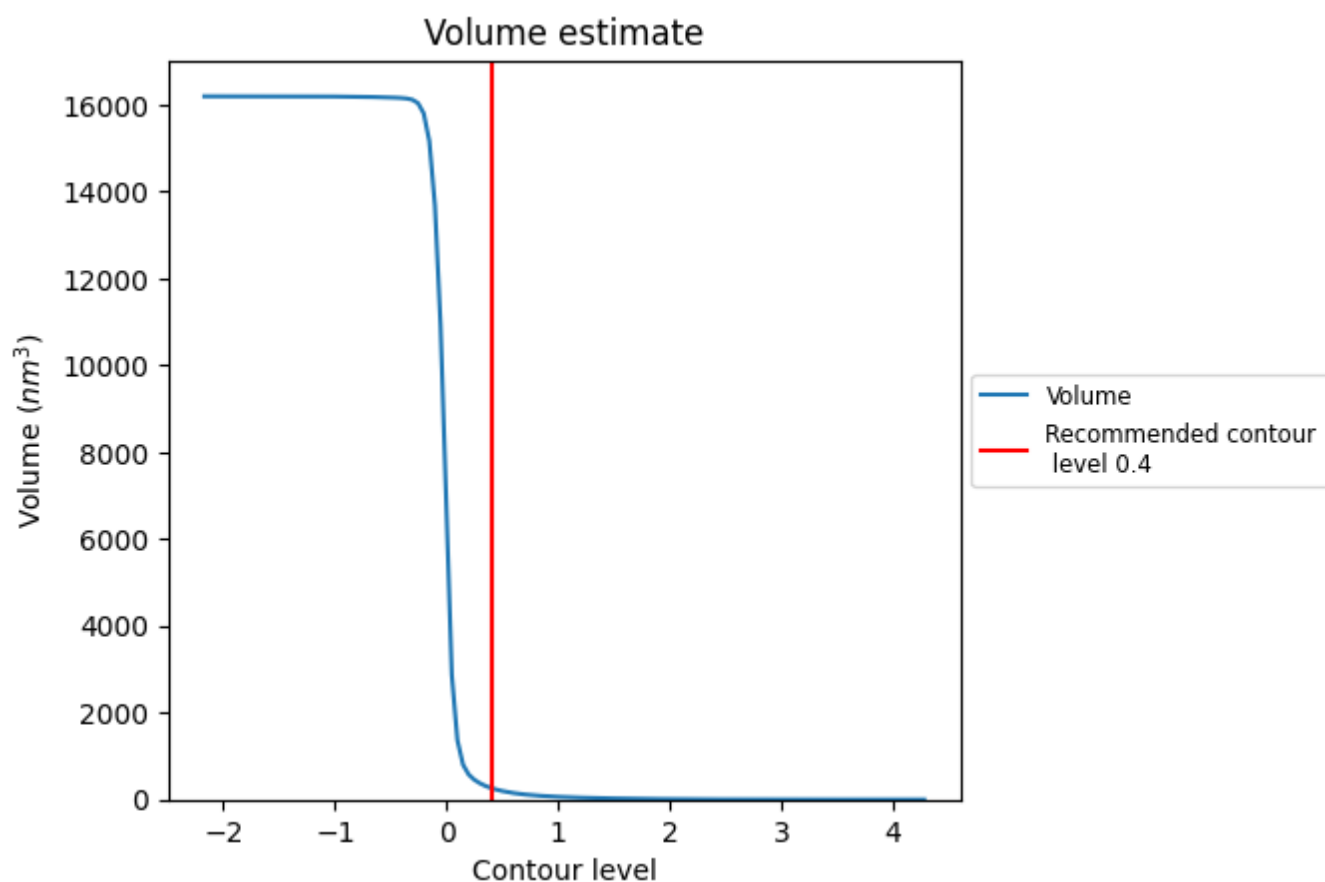
This section contains the results of statistical analysis of the map.

7.1 Map-value distribution [i](#)



The map-value distribution is plotted in 128 intervals along the x-axis. The y-axis is logarithmic. A spike in this graph at zero usually indicates that the volume has been masked.

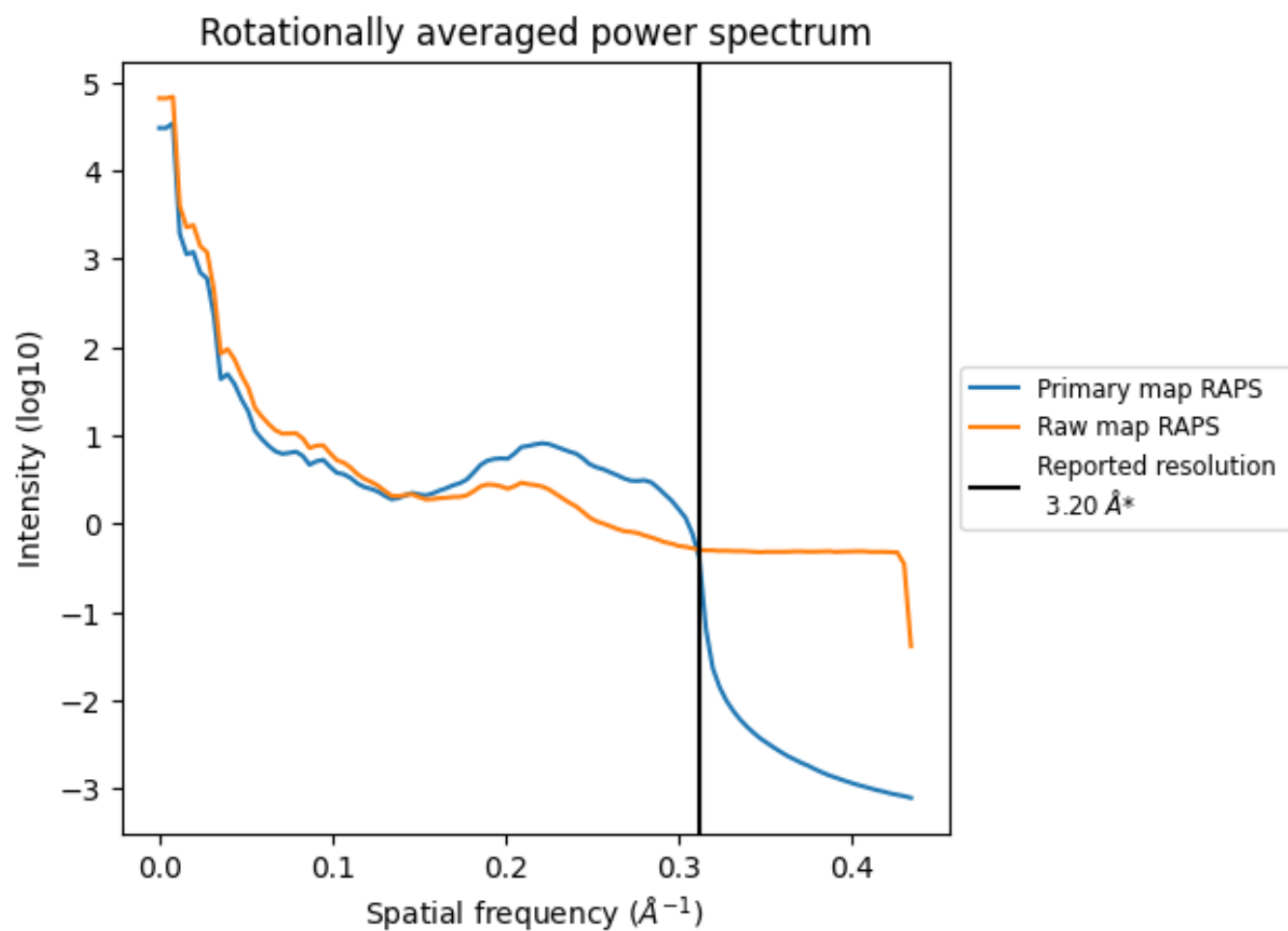
7.2 Volume estimate [i](#)



The volume at the recommended contour level is 264 nm³; this corresponds to an approximate mass of 238 kDa.

The volume estimate graph shows how the enclosed volume varies with the contour level. The recommended contour level is shown as a vertical line and the intersection between the line and the curve gives the volume of the enclosed surface at the given level.

7.3 Rotationally averaged power spectrum ⓘ

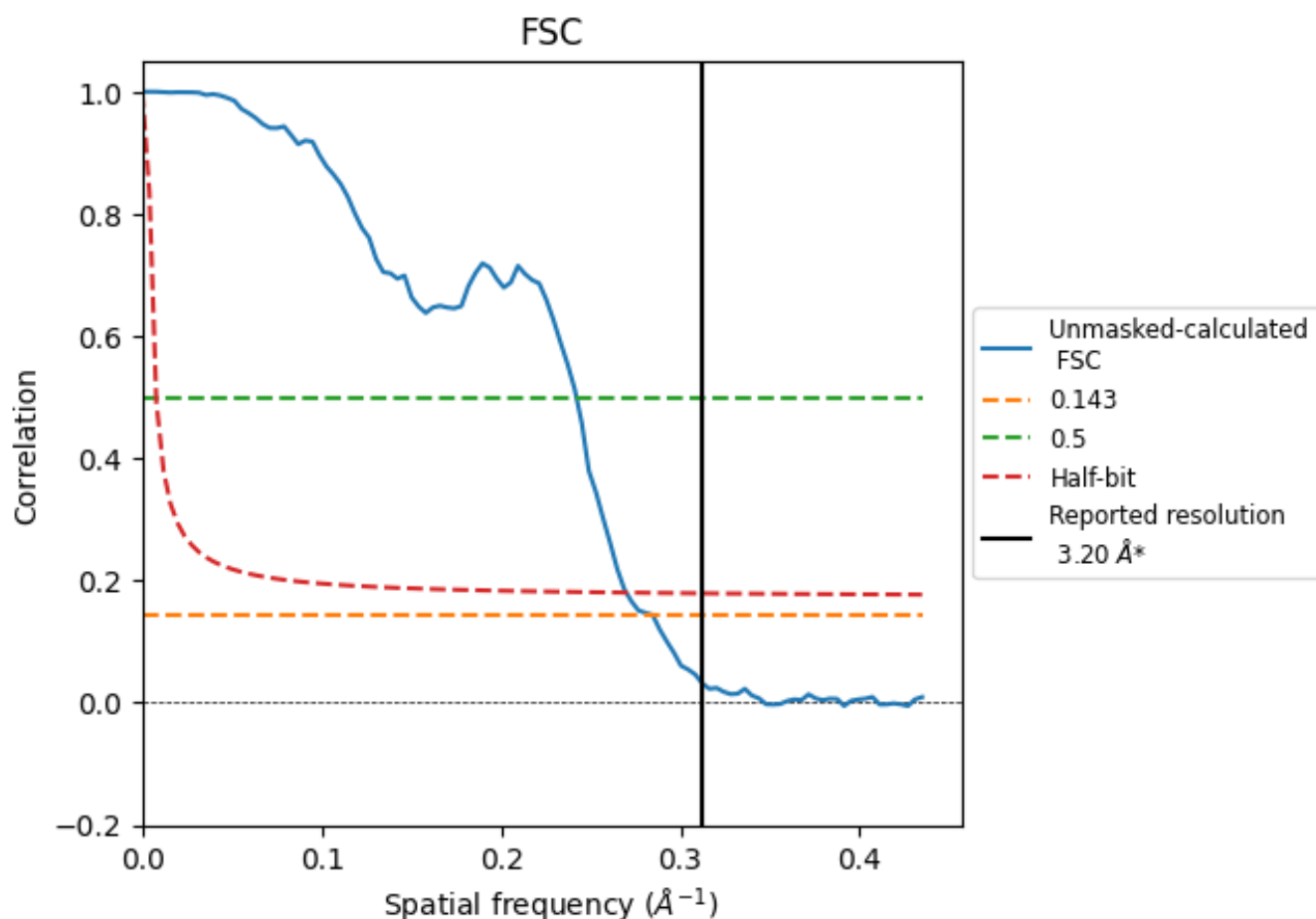


*Reported resolution corresponds to spatial frequency of 0.312 \AA^{-1}

8 Fourier-Shell correlation [i](#)

Fourier-Shell Correlation (FSC) is the most commonly used method to estimate the resolution of single-particle and subtomogram-averaged maps. The shape of the curve depends on the imposed symmetry, mask and whether or not the two 3D reconstructions used were processed from a common reference. The reported resolution is shown as a black line. A curve is displayed for the half-bit criterion in addition to lines showing the 0.143 gold standard cut-off and 0.5 cut-off.

8.1 FSC [i](#)



*Reported resolution corresponds to spatial frequency of 0.312 Å⁻¹

8.2 Resolution estimates [i](#)

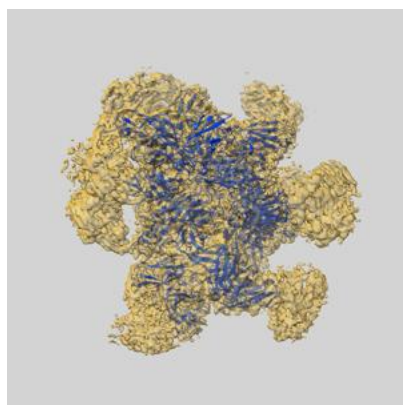
Resolution estimate (Å)	Estimation criterion (FSC cut-off)		
	0.143	0.5	Half-bit
Reported by author	3.20	-	-
Author-provided FSC curve	-	-	-
Unmasked-calculated*	3.51	4.13	3.71

*Resolution estimate based on FSC curve calculated by comparison of deposited half-maps.

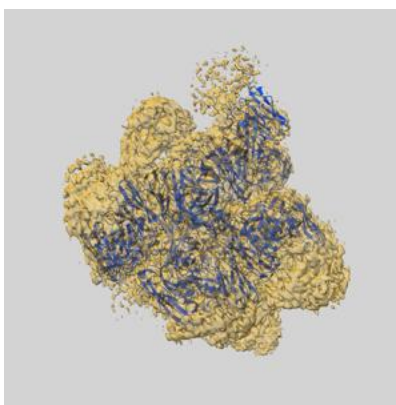
9 Map-model fit [i](#)

This section contains information regarding the fit between EMDB map EMD-27788 and PDB model 8DZ4. Per-residue inclusion information can be found in section [3](#) on page [6](#).

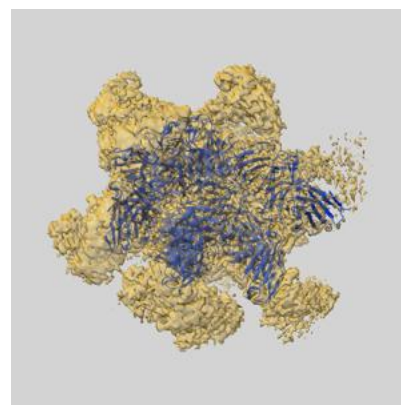
9.1 Map-model overlay [i](#)



X



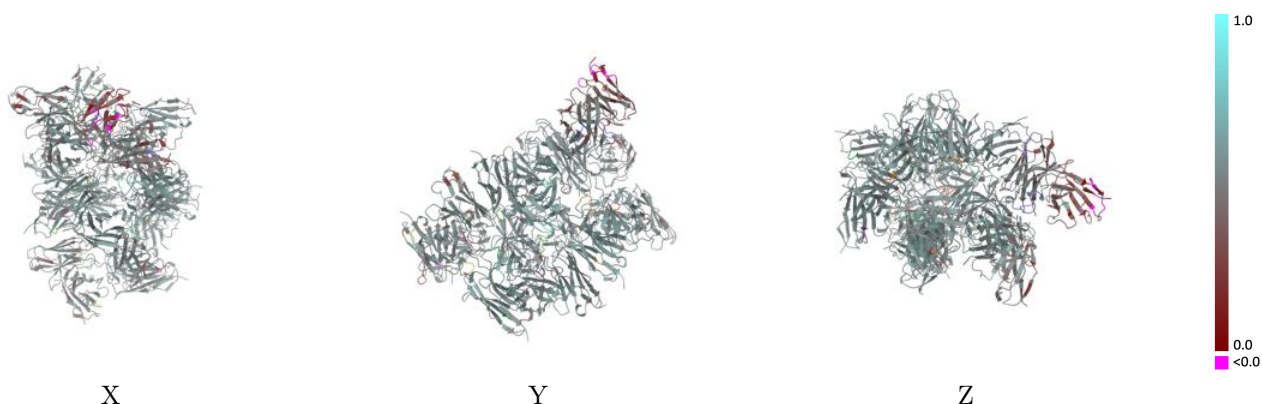
Y



Z

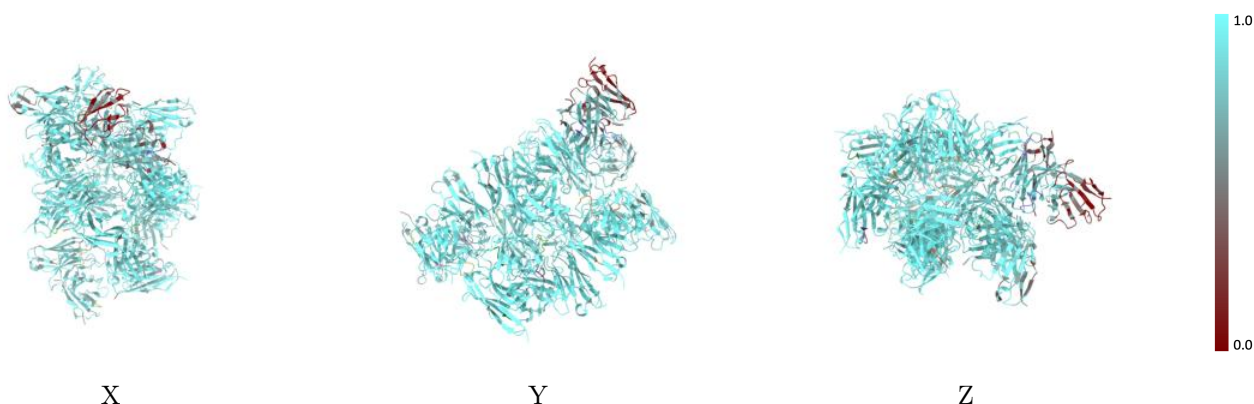
The images above show the 3D surface view of the map at the recommended contour level 0.4 at 50% transparency in yellow overlaid with a ribbon representation of the model coloured in blue. These images allow for the visual assessment of the quality of fit between the atomic model and the map.

9.2 Q-score mapped to coordinate model [i](#)



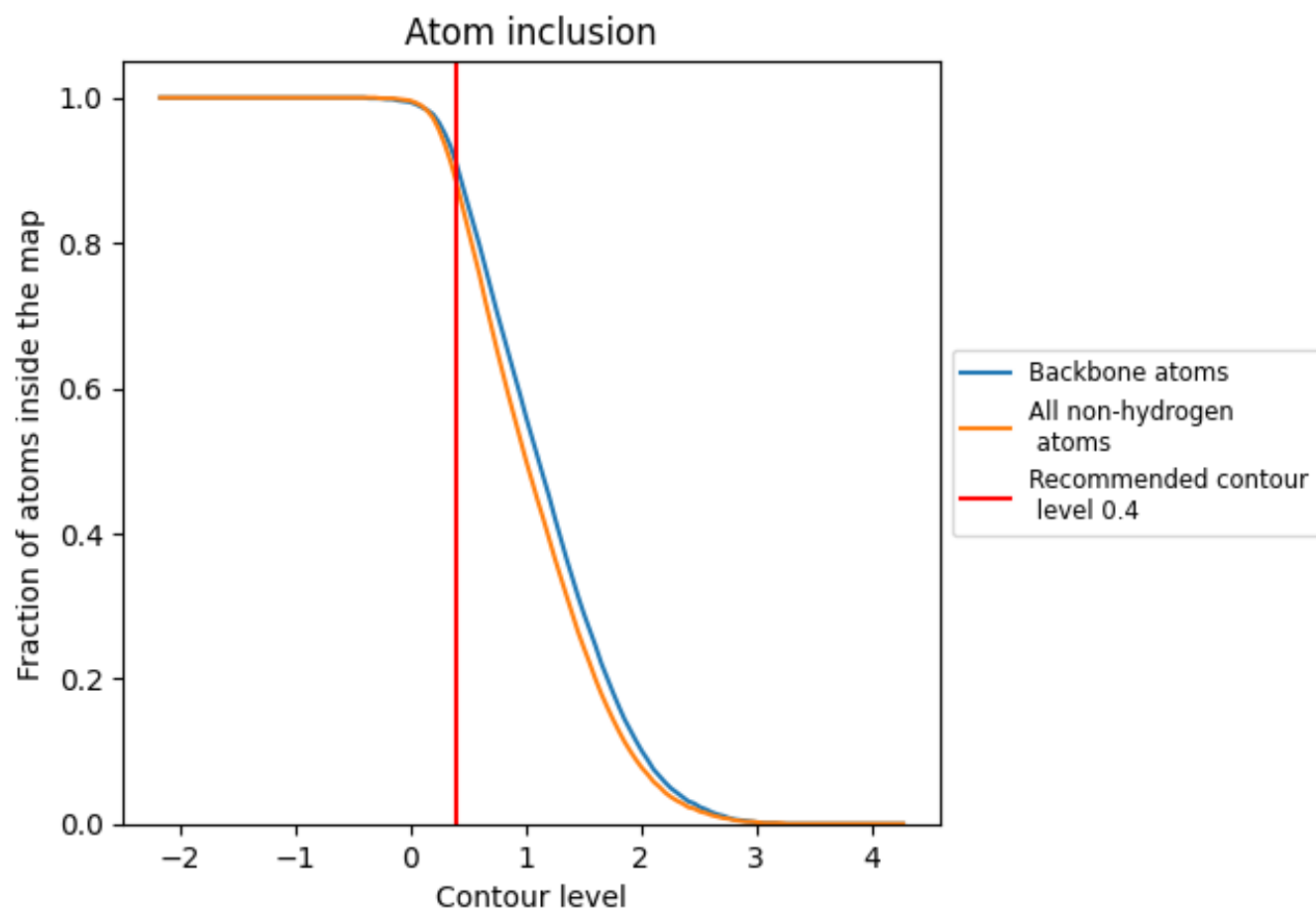
The images above show the model with each residue coloured according to its Q-score. This shows their resolvability in the map with higher Q-score values reflecting better resolvability. Please note: Q-score is calculating the resolvability of atoms, and thus high values are only expected at resolutions at which atoms can be resolved. Low Q-score values may therefore be expected for many entries.

9.3 Atom inclusion mapped to coordinate model [i](#)



The images above show the model with each residue coloured according to its atom inclusion. This shows to what extent they are inside the map at the recommended contour level (0.4).

























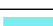



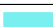



















9.4 Atom inclusion [i](#)



At the recommended contour level, 91% of all backbone atoms, 88% of all non-hydrogen atoms, are inside the map.

9.5 Map-model fit summary

The table lists the average atom inclusion at the recommended contour level (0.4) and Q-score for the entire model and for each chain.

Chain	Atom inclusion	Q-score
All	 0.8830	 0.5230
A	 0.7130	 0.4530
B	 0.4420	 0.3190
C	 0.8790	 0.5290
D	 0.8000	 0.4890
E	 0.9280	 0.5470
F	 0.8840	 0.5200
H	 0.9410	 0.5540
I	 0.9390	 0.5530
L	 0.9320	 0.5430
M	 0.9440	 0.5610
N	 0.9120	 0.5350
O	 0.9360	 0.5550
P	 0.9310	 0.5440
Q	 0.9500	 0.5600
R	 0.9390	 0.5490
S	 0.9310	 0.5510
T	 0.9340	 0.5410
U	 0.9370	 0.5460
V	 0.9110	 0.5370
W	 0.9080	 0.5250
X	 0.8990	 0.5120
Y	 0.8460	 0.4870
Z	 0.8450	 0.4990

