



Full wwPDB X-ray Structure Validation Report ⓘ

Apr 28, 2025 – 08:08 PM JST

PDB ID : 5E0A / pdb_00005e0a
Title : Crystal Structure of the complex of Camel Peptidoglycan Recognition Protein (CPGRP-S) and N-Acetylglucosamine at 2.6 Å
Authors : Dube, D.; Sharma, P.; Sinha, M.; Kaur, P.; Sharma, S.; Singh, T.P.
Deposited on : 2015-09-28
Resolution : 2.60 Å(reported)

This is a Full wwPDB X-ray Structure Validation Report for a publicly released PDB entry.

We welcome your comments at validation@mail.wwpdb.org

A user guide is available at

<https://www.wwpdb.org/validation/2017/XrayValidationReportHelp>

with specific help available everywhere you see the ⓘ symbol.

The types of validation reports are described at

<http://www.wwpdb.org/validation/2017/FAQs#types>.

The following versions of software and data (see [references ⓘ](#)) were used in the production of this report:

MolProbity : 4-5-2 with Phenix2.0rc1
Mogul : 1.8.5 (274361), CSD as541be (2020)
Xtriage (Phenix) : 2.0rc1
EDS : 3.0
Percentile statistics : 20231227.v01 (using entries in the PDB archive December 27th 2023)
CCP4 : 9.0.006 (Gargrove)
Density-Fitness : 1.0.12
Ideal geometry (proteins) : Engh & Huber (2001)
Ideal geometry (DNA, RNA) : Parkinson et al. (1996)
Validation Pipeline (wwPDB-VP) : 2.43.1

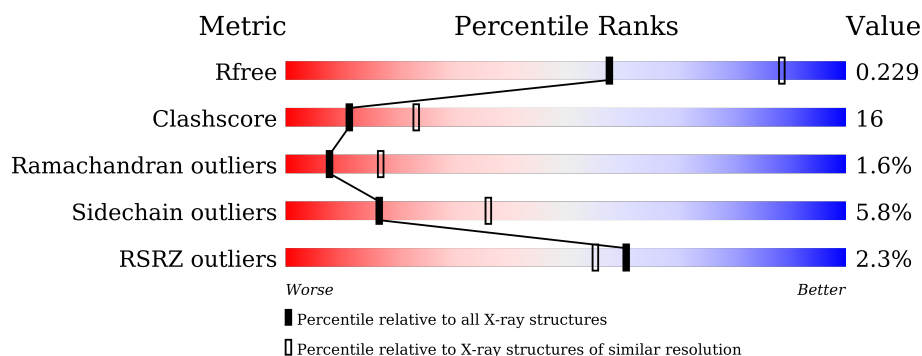
1 Overall quality at a glance

The following experimental techniques were used to determine the structure:

X-RAY DIFFRACTION

The reported resolution of this entry is 2.60 Å.

Percentile scores (ranging between 0-100) for global validation metrics of the entry are shown in the following graphic. The table shows the number of entries on which the scores are based.



Metric	Whole archive (#Entries)	Similar resolution (#Entries, resolution range(Å))
R_{free}	164625	3775 (2.60-2.60)
Clashscore	180529	4181 (2.60-2.60)
Ramachandran outliers	177936	4129 (2.60-2.60)
Sidechain outliers	177891	4129 (2.60-2.60)
RSRZ outliers	164620	3775 (2.60-2.60)

The table below summarises the geometric issues observed across the polymeric chains and their fit to the electron density. The red, orange, yellow and green segments of the lower bar indicate the fraction of residues that contain outliers for ≥ 3 , 2, 1 and 0 types of geometric quality criteria respectively. A grey segment represents the fraction of residues that are not modelled. The numeric value for each fraction is indicated below the corresponding segment, with a dot representing fractions $\leq 5\%$. The upper red bar (where present) indicates the fraction of residues that have poor fit to the electron density. The numeric value is given above the bar.

Mol	Chain	Length	Quality of chain
1	A	171	<div> <div>4%</div> <div> <div></div> <div>63%</div> <div>32%</div> <div>5% •</div> </div> </div>
1	B	171	<div> <div>2%</div> <div> <div></div> <div>62%</div> <div>33%</div> <div>• •</div> </div> </div>
1	C	171	<div> <div>0%</div> <div> <div></div> <div>61%</div> <div>32%</div> <div>6% •</div> </div> </div>
1	D	171	<div> <div>2%</div> <div> <div></div> <div>63%</div> <div>31%</div> <div>6% •</div> </div> </div>

The following table lists non-polymeric compounds, carbohydrate monomers and non-standard residues in protein, DNA, RNA chains that are outliers for geometric or electron-density-fit crite-

ria:

Mol	Type	Chain	Res	Chirality	Geometry	Clashes	Electron density
2	NAG	C	201	-	-	X	-

2 Entry composition [i](#)

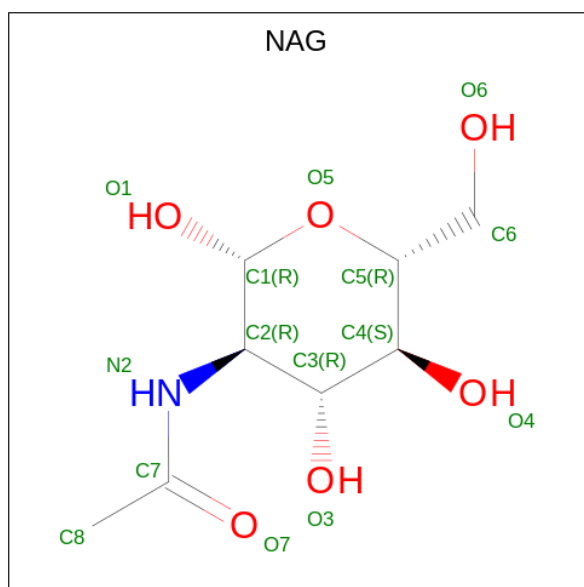
There are 4 unique types of molecules in this entry. The entry contains 5702 atoms, of which 0 are hydrogens and 0 are deuteriums.

In the tables below, the ZeroOcc column contains the number of atoms modelled with zero occupancy, the AltConf column contains the number of residues with at least one atom in alternate conformation and the Trace column contains the number of residues modelled with at most 2 atoms.

- Molecule 1 is a protein called Peptidoglycan recognition protein 1.

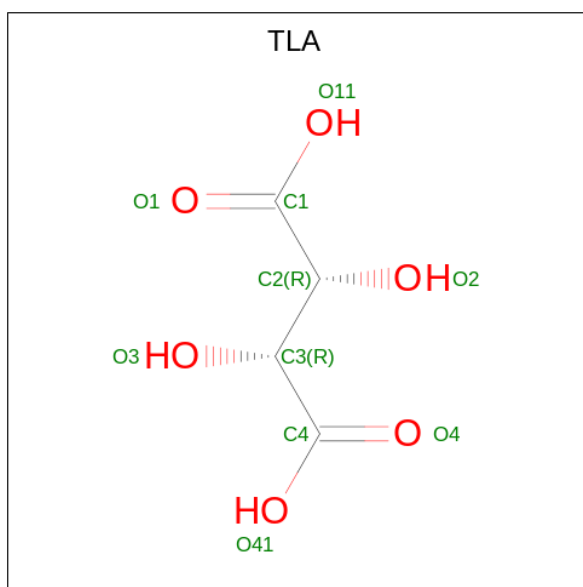
Mol	Chain	Residues	Atoms					ZeroOcc	AltConf	Trace
1	A	171	Total	C	N	O	S	0	0	0
			1337	834	254	241	8			
1	B	171	Total	C	N	O	S	0	0	0
			1337	834	254	241	8			
1	C	171	Total	C	N	O	S	0	0	0
			1337	834	254	241	8			
1	D	171	Total	C	N	O	S	0	0	0
			1337	834	254	241	8			

- Molecule 2 is 2-acetamido-2-deoxy-beta-D-glucopyranose (CCD ID: NAG) (formula: $C_8H_{15}NO_6$).



Mol	Chain	Residues	Atoms				ZeroOcc	AltConf
2	C	1	Total	C	N	O	0	0
			15	8	1	6		

- Molecule 3 is L(+)-TARTARIC ACID (CCD ID: TLA) (formula: $C_4H_6O_6$).



Mol	Chain	Residues	Atoms			ZeroOcc	AltConf
3	C	1	Total	C	O	0	0
			10	4	6		

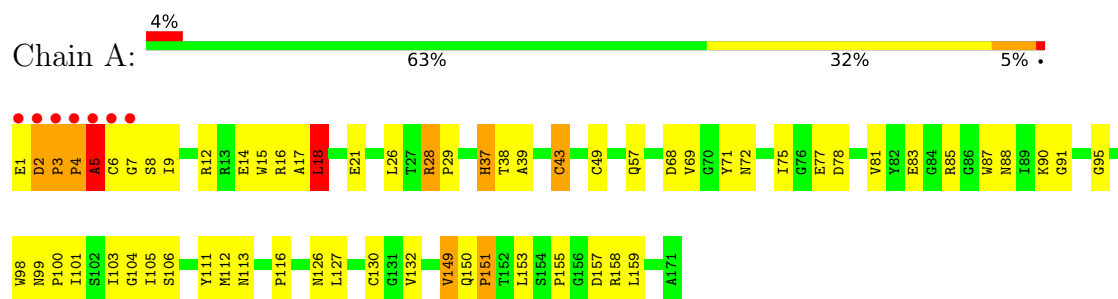
- Molecule 4 is water.

Mol	Chain	Residues	Atoms		ZeroOcc	AltConf
4	A	97	Total	O	0	0
			97	97		
4	B	81	Total	O	0	0
			81	81		
4	C	82	Total	O	0	0
			82	82		
4	D	69	Total	O	0	0
			69	69		

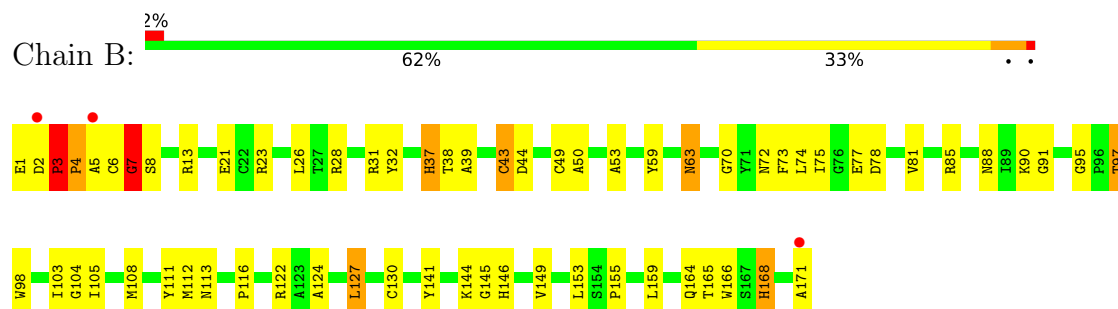
3 Residue-property plots

These plots are drawn for all protein, RNA, DNA and oligosaccharide chains in the entry. The first graphic for a chain summarises the proportions of the various outlier classes displayed in the second graphic. The second graphic shows the sequence view annotated by issues in geometry and electron density. Residues are color-coded according to the number of geometric quality criteria for which they contain at least one outlier: green = 0, yellow = 1, orange = 2 and red = 3 or more. A red dot above a residue indicates a poor fit to the electron density ($RSRZ > 2$). Stretches of 2 or more consecutive residues without any outlier are shown as a green connector. Residues present in the sample, but not in the model, are shown in grey.

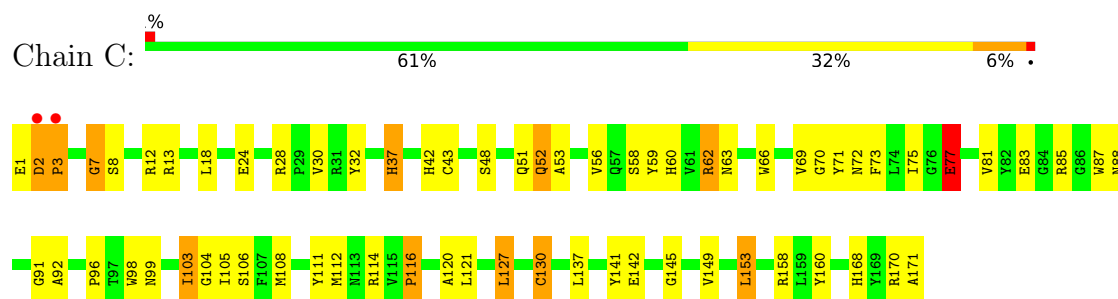
• Molecule 1: Peptidoglycan recognition protein 1



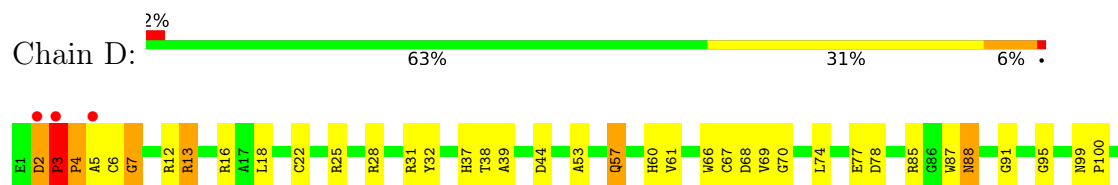
• Molecule 1: Peptidoglycan recognition protein 1

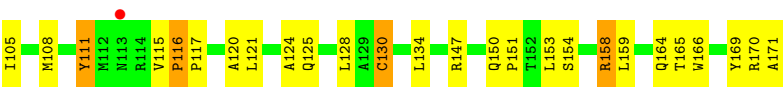


• Molecule 1: Peptidoglycan recognition protein 1



• Molecule 1: Peptidoglycan recognition protein 1





4 Data and refinement statistics

Property	Value	Source
Space group	I 2 2 2	Depositor
Cell constants a, b, c, α , β , γ	90.46Å 102.08Å 164.08Å 90.00° 90.00° 90.00°	Depositor
Resolution (Å)	86.68 – 2.60 86.67 – 2.60	Depositor EDS
% Data completeness (in resolution range)	93.7 (86.68-2.60) 93.5 (86.67-2.60)	Depositor EDS
R_{merge}	(Not available)	Depositor
R_{sym}	0.10	Depositor
$\langle I/\sigma(I) \rangle$ ¹	1.85 (at 2.59Å)	Xtriage
Refinement program	CNS 1.2	Depositor
R, R_{free}	0.196 , 0.214 0.182 , 0.229	Depositor DCC
R_{free} test set	1134 reflections (5.08%)	wwPDB-VP
Wilson B-factor (Å ²)	35.8	Xtriage
Anisotropy	0.466	Xtriage
Bulk solvent k_{sol} (e/Å ³), B_{sol} (Å ²)	0.27 , 40.0	EDS
L-test for twinning ²	$\langle L \rangle = 0.49$, $\langle L^2 \rangle = 0.32$	Xtriage
Estimated twinning fraction	No twinning to report.	Xtriage
F_o, F_c correlation	0.94	EDS
Total number of atoms	5702	wwPDB-VP
Average B, all atoms (Å ²)	34.0	wwPDB-VP

Xtriage's analysis on translational NCS is as follows: *The largest off-origin peak in the Patterson function is 5.13% of the height of the origin peak. No significant pseudotranslation is detected.*

¹Intensities estimated from amplitudes.

²Theoretical values of $\langle |L| \rangle$, $\langle L^2 \rangle$ for acentric reflections are 0.5, 0.333 respectively for untwinned datasets, and 0.375, 0.2 for perfectly twinned datasets.

5 Model quality ⓘ

5.1 Standard geometry ⓘ

Bond lengths and bond angles in the following residue types are not validated in this section: TLA, NAG

The Z score for a bond length (or angle) is the number of standard deviations the observed value is removed from the expected value. A bond length (or angle) with $|Z| > 5$ is considered an outlier worth inspection. RMSZ is the root-mean-square of all Z scores of the bond lengths (or angles).

Mol	Chain	Bond lengths		Bond angles	
		RMSZ	# Z >5	RMSZ	# Z >5
1	A	0.58	0/1374	1.32	14/1871 (0.7%)
1	B	0.62	0/1374	1.32	19/1871 (1.0%)
1	C	0.65	0/1374	1.40	17/1871 (0.9%)
1	D	0.61	0/1374	1.32	22/1871 (1.2%)
All	All	0.62	0/5496	1.34	72/7484 (1.0%)

There are no bond length outliers.

All (72) bond angle outliers are listed below:

Mol	Chain	Res	Type	Atoms	Z	Observed(°)	Ideal(°)
1	C	3	PRO	N-CA-C	18.40	128.13	110.47
1	C	2	ASP	CA-C-N	14.71	130.40	119.66
1	C	2	ASP	C-N-CA	14.71	130.40	119.66
1	A	5	ALA	N-CA-C	-12.22	84.78	110.80
1	C	8	SER	N-CA-C	-10.74	100.47	112.72
1	D	3	PRO	C-N-CD	-10.52	97.45	120.60
1	D	78	ASP	N-CA-C	-10.30	100.71	113.18
1	B	7	GLY	N-CA-C	10.10	137.11	113.18
1	A	95	GLY	CA-C-N	9.79	129.54	119.56
1	A	95	GLY	C-N-CA	9.79	129.54	119.56
1	A	2	ASP	C-N-CD	-9.73	99.20	120.60
1	A	101	ILE	N-CA-C	9.41	121.09	112.43
1	B	78	ASP	N-CA-C	-9.22	102.04	113.20
1	A	43	CYS	N-CA-CB	-8.44	95.86	111.13
1	B	8	SER	N-CA-C	8.31	122.89	111.17
1	B	63	ASN	N-CA-C	8.30	121.95	111.24
1	D	2	ASP	N-CA-C	7.77	128.48	112.40
1	B	166	TRP	N-CA-C	7.76	121.66	110.10
1	A	78	ASP	N-CA-C	-7.71	103.76	113.02
1	C	7	GLY	N-CA-C	7.71	131.45	113.18

Continued on next page...

Continued from previous page...

Mol	Chain	Res	Type	Atoms	Z	Observed(°)	Ideal(°)
1	B	95	GLY	CA-C-N	7.64	127.68	119.28
1	B	95	GLY	C-N-CA	7.64	127.68	119.28
1	C	87	TRP	N-CA-C	7.44	120.45	111.82
1	D	7	GLY	N-CA-C	7.33	122.61	112.57
1	B	88	ASN	N-CA-C	7.30	122.47	113.50
1	B	44	ASP	N-CA-C	6.87	121.65	112.30
1	D	87	TRP	N-CA-C	6.86	119.77	111.82
1	D	70	GLY	N-CA-C	6.79	122.37	114.16
1	B	43	CYS	N-CA-CB	-6.69	99.61	110.71
1	C	77	GLU	N-CA-C	-6.65	105.14	113.18
1	C	160	TYR	N-CA-C	-6.61	103.99	111.07
1	D	88	ASN	N-CA-C	6.56	121.56	113.50
1	D	116	PRO	N-CA-C	-6.53	102.74	110.70
1	D	115	VAL	CA-C-N	-6.51	113.68	120.38
1	D	115	VAL	C-N-CA	-6.51	113.68	120.38
1	A	157	ASP	N-CA-C	6.45	118.85	111.11
1	C	153	LEU	N-CA-C	-6.44	105.43	113.28
1	A	28	ARG	N-CA-C	6.43	124.03	109.81
1	D	166	TRP	N-CA-C	6.42	119.79	110.28
1	B	3	PRO	N-CA-C	6.41	118.52	110.70
1	B	70	GLY	N-CA-C	6.33	120.33	112.73
1	A	16	ARG	N-CA-C	6.27	120.29	111.52
1	B	2	ASP	CA-C-N	6.13	126.69	120.38
1	B	2	ASP	C-N-CA	6.13	126.69	120.38
1	D	32	TYR	N-CA-C	6.11	119.50	109.72
1	D	18	LEU	N-CA-C	-6.10	100.62	110.32
1	B	28	ARG	N-CA-C	6.06	123.19	109.81
1	C	120	ALA	N-CA-C	-6.02	104.29	111.69
1	C	116	PRO	N-CA-C	-5.97	103.41	110.70
1	D	120	ALA	N-CA-C	-5.94	105.70	113.12
1	A	88	ASN	N-CA-C	5.89	120.62	112.90
1	C	18	LEU	N-CA-C	-5.88	101.78	110.48
1	B	50	ALA	N-CA-C	-5.84	104.99	111.36
1	B	164	GLN	N-CA-C	-5.68	105.46	112.90
1	A	21	GLU	N-CA-C	-5.61	105.78	113.30
1	D	25	ARG	N-CA-C	5.56	118.78	109.95
1	A	18	LEU	N-CA-C	-5.47	103.31	110.53
1	D	111	TYR	N-CA-C	5.45	119.45	112.26
1	D	3	PRO	N-CA-C	5.40	117.29	110.70
1	A	14	GLU	N-CA-C	5.39	117.16	111.28
1	D	44	ASP	N-CA-C	5.35	119.58	112.30
1	B	43	CYS	N-CA-C	5.25	117.92	108.48

Continued on next page...

Continued from previous page...

Mol	Chain	Res	Type	Atoms	Z	Observed(°)	Ideal(°)
1	D	95	GLY	CA-C-N	5.18	125.26	119.87
1	D	95	GLY	C-N-CA	5.18	125.26	119.87
1	B	168	HIS	N-CA-C	5.09	119.47	113.16
1	D	57	GLN	N-CA-C	5.07	116.88	111.36
1	C	70	GLY	N-CA-C	5.04	120.26	114.16
1	C	69	VAL	N-CA-C	-5.04	102.38	109.63
1	C	145	GLY	N-CA-C	-5.02	105.04	113.02
1	D	61	VAL	N-CA-C	5.02	116.12	111.45
1	C	32	TYR	N-CA-C	5.00	117.73	109.72
1	C	127	LEU	N-CA-C	-5.00	105.74	111.14

There are no chirality outliers.

There are no planarity outliers.

5.2 Too-close contacts ⓘ

In the following table, the Non-H and H(model) columns list the number of non-hydrogen atoms and hydrogen atoms in the chain respectively. The H(added) column lists the number of hydrogen atoms added and optimized by MolProbity. The Clashes column lists the number of clashes within the asymmetric unit, whereas Symm-Clashes lists symmetry-related clashes.

Mol	Chain	Non-H	H(model)	H(added)	Clashes	Symm-Clashes
1	A	1337	0	1288	38	0
1	B	1337	0	1288	41	0
1	C	1337	0	1288	48	0
1	D	1337	0	1288	45	0
2	C	15	0	15	9	0
3	C	10	0	4	1	0
4	A	97	0	0	0	0
4	B	81	0	0	1	0
4	C	82	0	0	1	0
4	D	69	0	0	0	0
All	All	5702	0	5171	168	0

The all-atom clashscore is defined as the number of clashes found per 1000 atoms (including hydrogen atoms). The all-atom clashscore for this structure is 16.

All (168) close contacts within the same asymmetric unit are listed below, sorted by their clash magnitude.

Atom-1	Atom-2	Interatomic distance (Å)	Clash overlap (Å)
1:C:2:ASP:HB3	1:C:3:PRO:HD2	1.30	1.09
1:B:3:PRO:HB2	1:B:4:PRO:HD3	1.11	1.05
1:B:3:PRO:HB2	1:B:4:PRO:CD	1.95	0.97
1:B:72:ASN:HD22	1:B:104:GLY:H	1.11	0.96
1:C:99:ASN:HB2	2:C:201:NAG:H83	1.50	0.89
1:B:81:VAL:HG11	1:B:127:LEU:HD13	1.54	0.89
1:B:3:PRO:CB	1:B:4:PRO:HD3	2.01	0.88
1:C:112:MET:HE1	1:C:153:LEU:HB3	1.54	0.88
1:B:112:MET:HE1	1:B:153:LEU:HB3	1.56	0.87
1:A:43:CYS:O	1:A:77:GLU:HB2	1.73	0.87
1:A:112:MET:HE1	1:A:153:LEU:HB3	1.57	0.86
1:A:72:ASN:HD22	1:A:104:GLY:H	1.23	0.85
1:A:6:CYS:SG	1:A:7:GLY:N	2.50	0.84
1:D:28:ARG:HH11	1:D:88:ASN:HD21	1.22	0.84
1:C:52:GLN:HB3	1:C:108:MET:HE1	1.57	0.84
1:C:52:GLN:HB3	1:C:108:MET:CE	2.08	0.82
1:D:4:PRO:HG2	1:D:6:CYS:HB2	1.64	0.79
1:C:72:ASN:HD22	1:C:104:GLY:H	1.29	0.77
1:C:37:HIS:HD2	1:C:111:TYR:H	1.32	0.76
1:A:1:GLU:HG2	1:A:2:ASP:H	1.51	0.76
1:B:72:ASN:ND2	1:B:104:GLY:H	1.83	0.75
1:D:37:HIS:HD2	1:D:111:TYR:H	1.36	0.74
1:D:28:ARG:HH11	1:D:88:ASN:ND2	1.87	0.73
1:C:99:ASN:CB	2:C:201:NAG:H83	2.18	0.73
1:C:75:ILE:HD13	1:C:81:VAL:HG22	1.70	0.73
1:A:28:ARG:HB3	1:A:29:PRO:HD3	1.71	0.72
1:B:43:CYS:O	1:B:77:GLU:HB2	1.90	0.71
1:B:31:ARG:HD3	1:B:32:TYR:CE2	2.26	0.70
1:B:31:ARG:HD3	1:B:32:TYR:CZ	2.26	0.70
1:C:92:ALA:HB2	2:C:201:NAG:H1	1.73	0.70
1:C:92:ALA:HB2	2:C:201:NAG:H5	1.75	0.69
1:D:4:PRO:HD2	1:D:6:CYS:H	1.57	0.68
1:A:37:HIS:HD2	1:A:111:TYR:H	1.39	0.68
1:B:144:LYS:HZ3	1:B:171:ALA:HB3	1.56	0.68
1:C:2:ASP:HB3	1:C:3:PRO:CD	2.17	0.67
1:C:52:GLN:C	1:C:108:MET:HE1	2.20	0.67
1:B:144:LYS:NZ	1:B:171:ALA:HB3	2.09	0.66
1:D:28:ARG:NH1	1:D:88:ASN:HD21	1.94	0.66
1:D:7:GLY:N	1:D:130:CYS:SG	2.69	0.66
1:C:48:SER:O	1:C:51:GLN:HB3	1.98	0.64
1:D:74:LEU:HD22	1:D:108:MET:HE3	1.81	0.63
1:B:112:MET:CE	1:B:153:LEU:HB3	2.28	0.63

Continued on next page...

Continued from previous page...

Atom-1	Atom-2	Interatomic distance (Å)	Clash overlap (Å)
1:D:53:ALA:CA	1:D:108:MET:HE1	2.28	0.63
1:C:112:MET:HE1	1:C:153:LEU:CB	2.29	0.63
1:D:4:PRO:HG2	1:D:6:CYS:CB	2.27	0.63
1:D:67:CYS:SG	1:D:68:ASP:N	2.72	0.63
1:B:37:HIS:HD2	1:B:111:TYR:H	1.48	0.62
1:D:77:GLU:HG2	1:D:117:PRO:HD2	1.82	0.61
1:C:98:TRP:CD1	1:C:149:VAL:HG13	2.36	0.61
1:C:43:CYS:O	1:C:77:GLU:HB3	2.01	0.60
1:C:30:VAL:HG11	1:C:103:ILE:HD12	1.83	0.60
1:C:96:PRO:HA	2:C:201:NAG:H81	1.82	0.60
1:D:37:HIS:CD2	1:D:111:TYR:H	2.18	0.60
1:D:53:ALA:HA	1:D:108:MET:CE	2.32	0.59
1:B:155:PRO:HB2	1:B:159:LEU:HD23	1.82	0.59
1:A:112:MET:CE	1:A:153:LEU:HB3	2.31	0.58
1:D:57:GLN:HG3	1:D:69:VAL:HB	1.87	0.57
1:A:4:PRO:C	1:A:5:ALA:O	2.47	0.57
1:A:81:VAL:HG11	1:A:127:LEU:HD13	1.87	0.56
1:A:18:LEU:H	1:A:57:GLN:HE22	1.54	0.56
1:B:72:ASN:HD22	1:B:104:GLY:N	1.94	0.56
1:C:142:GLU:OE1	1:C:170:ARG:HG2	2.05	0.56
1:B:23:ARG:HH11	1:B:23:ARG:HG2	1.72	0.55
1:D:60:HIS:O	1:D:66:TRP:HB2	2.06	0.55
1:C:170:ARG:O	1:C:171:ALA:OXT	2.24	0.55
1:B:26:LEU:HD13	1:B:90:LYS:HA	1.89	0.55
1:B:75:ILE:HD13	1:B:124:ALA:HB2	1.89	0.54
1:C:92:ALA:CB	2:C:201:NAG:H5	2.38	0.54
1:C:85:ARG:HD2	1:C:91:GLY:HA2	1.90	0.54
1:A:85:ARG:HD2	1:A:91:GLY:HA2	1.89	0.54
1:C:2:ASP:CB	1:C:3:PRO:HD2	2.15	0.54
1:C:28:ARG:NH1	1:C:88:ASN:HD21	2.06	0.54
1:D:6:CYS:SG	1:D:134:LEU:HD11	2.49	0.53
1:A:68:ASP:CG	1:A:69:VAL:H	2.17	0.53
1:D:38:THR:O	1:D:39:ALA:HB3	2.08	0.53
1:B:3:PRO:HB3	1:D:31:ARG:HH22	1.74	0.52
1:A:4:PRO:O	1:A:5:ALA:O	2.28	0.52
1:C:99:ASN:HB2	2:C:201:NAG:C8	2.32	0.52
1:D:164:GLN:HG2	1:D:169:TYR:CE2	2.45	0.52
1:C:42:HIS:HB2	1:C:77:GLU:OE1	2.11	0.51
1:C:72:ASN:ND2	1:C:104:GLY:H	2.05	0.51
1:D:2:ASP:O	1:D:3:PRO:C	2.53	0.50
1:C:53:ALA:N	1:C:108:MET:HE1	2.26	0.50

Continued on next page...

Continued from previous page...

Atom-1	Atom-2	Interatomic distance (Å)	Clash overlap (Å)
1:A:72:ASN:ND2	1:A:104:GLY:H	2.03	0.50
1:C:28:ARG:HH11	1:C:88:ASN:ND2	2.09	0.50
1:B:43:CYS:SG	1:B:49:CYS:N	2.82	0.50
1:B:38:THR:O	1:B:39:ALA:HB3	2.11	0.50
1:C:141:TYR:O	1:C:168:HIS:HD2	1.94	0.49
1:D:53:ALA:HA	1:D:108:MET:HE1	1.93	0.49
1:A:87:TRP:CZ3	1:A:103:ILE:HD13	2.47	0.49
1:B:85:ARG:HD2	1:B:91:GLY:HA2	1.94	0.49
1:B:144:LYS:NZ	1:B:171:ALA:CB	2.75	0.49
1:D:4:PRO:HD2	1:D:5:ALA:N	2.28	0.49
1:C:73:PHE:HB2	1:C:105:ILE:HG22	1.93	0.49
1:D:4:PRO:O	1:D:5:ALA:HB3	2.12	0.49
1:B:98:TRP:CD1	1:B:149:VAL:HG13	2.48	0.49
1:D:28:ARG:HD2	1:D:88:ASN:ND2	2.28	0.49
1:B:74:LEU:CD2	1:B:108:MET:HE3	2.42	0.49
1:A:98:TRP:CE2	1:A:149:VAL:HG22	2.46	0.49
1:C:12:ARG:HG3	1:C:83:GLU:OE1	2.13	0.49
1:A:116:PRO:HG2	1:A:159:LEU:HD13	1.93	0.48
1:A:126:ASN:ND2	1:B:7:GLY:HA2	2.29	0.48
1:C:60:HIS:O	1:C:66:TRP:HB2	2.14	0.48
1:B:23:ARG:HG2	1:B:23:ARG:NH1	2.29	0.48
1:D:170:ARG:O	1:D:171:ALA:OXT	2.32	0.47
1:D:68:ASP:OD1	1:D:69:VAL:N	2.47	0.47
1:A:43:CYS:SG	1:A:49:CYS:N	2.82	0.47
1:A:15:TRP:CH2	1:A:17:ALA:HB2	2.49	0.47
1:B:97:THR:HG1	1:B:98:TRP:CD1	2.33	0.47
1:D:150:GLN:HB2	1:D:151:PRO:HD3	1.96	0.47
1:C:66:TRP:CD1	2:C:201:NAG:H61	2.50	0.47
1:D:99:ASN:N	1:D:100:PRO:CD	2.78	0.47
1:D:85:ARG:HD2	1:D:91:GLY:HA2	1.97	0.47
1:A:12:ARG:HG3	1:A:83:GLU:OE1	2.15	0.46
1:C:37:HIS:CD2	1:C:111:TYR:H	2.23	0.46
1:D:150:GLN:HB2	1:D:151:PRO:CD	2.45	0.45
1:A:26:LEU:HD13	1:A:90:LYS:HA	1.99	0.45
1:A:98:TRP:CD1	1:A:149:VAL:HG13	2.52	0.45
1:C:28:ARG:HH11	1:C:88:ASN:HD21	1.62	0.45
1:B:3:PRO:HB3	1:D:31:ARG:NH2	2.32	0.45
1:A:8:SER:HB2	1:B:122:ARG:HG2	1.99	0.45
1:D:147:ARG:HB3	1:D:154:SER:O	2.16	0.45
1:A:68:ASP:CG	1:A:69:VAL:N	2.75	0.44
1:D:53:ALA:N	1:D:108:MET:HE1	2.31	0.44

Continued on next page...

Continued from previous page...

Atom-1	Atom-2	Interatomic distance (Å)	Clash overlap (Å)
1:C:2:ASP:CB	1:C:3:PRO:CD	2.86	0.44
1:D:124:ALA:O	1:D:128:LEU:HG	2.16	0.44
1:A:17:ALA:HA	1:A:57:GLN:HE22	1.83	0.44
1:B:141:TYR:O	1:B:168:HIS:HD2	2.00	0.44
1:D:4:PRO:HD2	1:D:6:CYS:N	2.29	0.44
1:B:73:PHE:HB2	1:B:105:ILE:HG22	1.99	0.44
1:A:1:GLU:HG2	1:A:2:ASP:N	2.27	0.44
1:A:2:ASP:HB2	1:A:3:PRO:HB3	2.00	0.44
1:C:103:ILE:HD13	1:C:137:LEU:HD21	2.00	0.44
1:C:59:TYR:HD1	1:C:63:ASN:HD22	1.65	0.43
1:D:37:HIS:CE1	1:D:154:SER:HA	2.53	0.43
1:C:116:PRO:HG2	1:C:121:LEU:CD1	2.49	0.43
1:D:116:PRO:HB2	1:D:121:LEU:HD21	2.00	0.43
1:A:38:THR:O	1:A:39:ALA:HB3	2.19	0.43
1:C:66:TRP:CG	2:C:201:NAG:H61	2.54	0.43
1:A:71:TYR:CD1	1:A:106:SER:HB2	2.54	0.43
1:A:99:ASN:N	1:A:100:PRO:CD	2.82	0.43
1:A:150:GLN:HB2	1:A:151:PRO:HD2	2.01	0.43
1:C:52:GLN:HB3	1:C:108:MET:HE2	1.97	0.42
1:B:145:GLY:O	1:B:146:HIS:C	2.62	0.42
1:C:114:ARG:N	1:C:158:ARG:HD3	2.33	0.42
1:C:127:LEU:O	1:C:130:CYS:HB2	2.19	0.42
1:D:16:ARG:HD3	1:D:16:ARG:HA	1.83	0.42
1:A:158:ARG:HD3	1:A:158:ARG:HA	1.79	0.42
1:B:6:CYS:HA	1:B:130:CYS:HB2	2.01	0.42
1:D:158:ARG:HD3	1:D:158:ARG:HA	1.79	0.42
1:B:53:ALA:CA	1:B:108:MET:HE1	2.49	0.42
1:D:2:ASP:HA	1:D:3:PRO:HD2	1.60	0.41
1:C:168:HIS:HE1	4:C:379:HOH:O	2.03	0.41
1:D:53:ALA:HB2	1:D:108:MET:HE1	2.01	0.41
1:B:59:TYR:HD1	1:B:63:ASN:HD22	1.64	0.41
1:B:74:LEU:HD22	1:B:108:MET:HE3	2.02	0.41
1:D:53:ALA:CA	1:D:108:MET:CE	2.94	0.41
1:C:71:TYR:CD1	1:C:106:SER:HB2	2.56	0.41
1:A:18:LEU:H	1:A:57:GLN:NE2	2.17	0.41
1:C:58:SER:O	1:C:62:ARG:HB2	2.20	0.41
1:B:116:PRO:HG3	1:B:159:LEU:HD13	2.02	0.41
1:A:155:PRO:HB2	1:A:159:LEU:HD23	2.03	0.41
1:A:28:ARG:HD2	1:A:28:ARG:HA	1.82	0.40
1:B:165:THR:HG22	4:B:260:HOH:O	2.22	0.40
3:C:202:TLA:O3	1:D:153:LEU:HB2	2.21	0.40

Continued on next page...

Continued from previous page...

Atom-1	Atom-2	Interatomic distance (Å)	Clash overlap (Å)
1:D:12:ARG:O	1:D:13:ARG:C	2.63	0.40
1:A:75:ILE:HD11	1:A:105:ILE:HB	2.03	0.40
1:B:103:ILE:HD13	1:B:103:ILE:HA	1.87	0.40

There are no symmetry-related clashes.

5.3 Torsion angles [i](#)

5.3.1 Protein backbone [i](#)

In the following table, the Percentiles column shows the percent Ramachandran outliers of the chain as a percentile score with respect to all X-ray entries followed by that with respect to entries of similar resolution.

The Analysed column shows the number of residues for which the backbone conformation was analysed, and the total number of residues.

Mol	Chain	Analysed	Favoured	Allowed	Outliers	Percentiles	
1	A	169/171 (99%)	155 (92%)	10 (6%)	4 (2%)	5	9
1	B	169/171 (99%)	156 (92%)	9 (5%)	4 (2%)	5	9
1	C	169/171 (99%)	161 (95%)	7 (4%)	1 (1%)	22	43
1	D	169/171 (99%)	157 (93%)	10 (6%)	2 (1%)	11	24
All	All	676/684 (99%)	629 (93%)	36 (5%)	11 (2%)	8	17

All (11) Ramachandran outliers are listed below:

Mol	Chain	Res	Type
1	A	3	PRO
1	A	4	PRO
1	B	3	PRO
1	C	7	GLY
1	D	4	PRO
1	A	5	ALA
1	B	7	GLY
1	D	3	PRO
1	B	5	ALA
1	B	4	PRO
1	A	151	PRO

5.3.2 Protein sidechains ⓘ

In the following table, the Percentiles column shows the percent sidechain outliers of the chain as a percentile score with respect to all X-ray entries followed by that with respect to entries of similar resolution.

The Analysed column shows the number of residues for which the sidechain conformation was analysed, and the total number of residues.

Mol	Chain	Analysed	Rotameric	Outliers	Percentiles	
1	A	139/139 (100%)	132 (95%)	7 (5%)	20	43
1	B	139/139 (100%)	132 (95%)	7 (5%)	20	43
1	C	139/139 (100%)	129 (93%)	10 (7%)	12	26
1	D	139/139 (100%)	131 (94%)	8 (6%)	17	36
All	All	556/556 (100%)	524 (94%)	32 (6%)	17	36

All (32) residues with a non-rotameric sidechain are listed below:

Mol	Chain	Res	Type
1	A	9	ILE
1	A	18	LEU
1	A	37	HIS
1	A	113	ASN
1	A	130	CYS
1	A	132	VAL
1	A	149	VAL
1	B	1	GLU
1	B	13	ARG
1	B	21	GLU
1	B	37	HIS
1	B	97	THR
1	B	113	ASN
1	B	127	LEU
1	C	1	GLU
1	C	13	ARG
1	C	24	GLU
1	C	37	HIS
1	C	52	GLN
1	C	56	VAL
1	C	62	ARG
1	C	77	GLU
1	C	103	ILE
1	C	130	CYS

Continued on next page...

Continued from previous page...

Mol	Chain	Res	Type
1	D	13	ARG
1	D	22	CYS
1	D	105	ILE
1	D	125	GLN
1	D	130	CYS
1	D	158	ARG
1	D	159	LEU
1	D	165	THR

Sometimes sidechains can be flipped to improve hydrogen bonding and reduce clashes. All (31) such sidechains are listed below:

Mol	Chain	Res	Type
1	A	37	HIS
1	A	52	GLN
1	A	55	ASN
1	A	57	GLN
1	A	72	ASN
1	A	93	HIS
1	A	126	ASN
1	A	150	GLN
1	B	37	HIS
1	B	42	HIS
1	B	63	ASN
1	B	72	ASN
1	B	88	ASN
1	B	164	GLN
1	B	168	HIS
1	C	37	HIS
1	C	54	GLN
1	C	55	ASN
1	C	63	ASN
1	C	72	ASN
1	C	88	ASN
1	C	93	HIS
1	C	150	GLN
1	C	164	GLN
1	C	168	HIS
1	D	37	HIS
1	D	52	GLN
1	D	57	GLN
1	D	63	ASN
1	D	88	ASN

Continued on next page...

Continued from previous page...

Mol	Chain	Res	Type
1	D	150	GLN

5.3.3 RNA [i](#)

There are no RNA molecules in this entry.

5.4 Non-standard residues in protein, DNA, RNA chains [i](#)

There are no non-standard protein/DNA/RNA residues in this entry.

5.5 Carbohydrates [i](#)

There are no oligosaccharides in this entry.

5.6 Ligand geometry [i](#)

2 ligands are modelled in this entry.

In the following table, the Counts columns list the number of bonds (or angles) for which Mogul statistics could be retrieved, the number of bonds (or angles) that are observed in the model and the number of bonds (or angles) that are defined in the Chemical Component Dictionary. The Link column lists molecule types, if any, to which the group is linked. The Z score for a bond length (or angle) is the number of standard deviations the observed value is removed from the expected value. A bond length (or angle) with $|Z| > 2$ is considered an outlier worth inspection. RMSZ is the root-mean-square of all Z scores of the bond lengths (or angles).

Mol	Type	Chain	Res	Link	Bond lengths			Bond angles		
					Counts	RMSZ	$\# Z > 2$	Counts	RMSZ	$\# Z > 2$
2	NAG	C	201	-	15,15,15	0.70	0	21,21,21	2.23	7 (33%)
3	TLA	C	202	-	9,9,9	1.04	0	12,12,12	1.94	5 (41%)

In the following table, the Chirals column lists the number of chiral outliers, the number of chiral centers analysed, the number of these observed in the model and the number defined in the Chemical Component Dictionary. Similar counts are reported in the Torsion and Rings columns. '-' means no outliers of that kind were identified.

Mol	Type	Chain	Res	Link	Chirals	Torsions	Rings
2	NAG	C	201	-	-	3/6/26/26	0/1/1/1
3	TLA	C	202	-	-	4/12/12/12	-

There are no bond length outliers.

All (12) bond angle outliers are listed below:

Mol	Chain	Res	Type	Atoms	Z	Observed(°)	Ideal(°)
2	C	201	NAG	C3-C2-N2	5.74	121.46	110.62
2	C	201	NAG	C2-N2-C7	4.39	133.84	123.18
3	C	202	TLA	O11-C1-C2	3.01	121.40	113.27
3	C	202	TLA	O41-C4-C3	2.91	121.15	113.27
2	C	201	NAG	C4-C3-C2	-2.89	106.10	110.34
2	C	201	NAG	O5-C5-C6	2.72	113.20	106.44
2	C	201	NAG	O7-C7-N2	2.63	126.79	121.95
3	C	202	TLA	O2-C2-C3	-2.51	105.26	110.23
3	C	202	TLA	O3-C3-C2	-2.50	105.26	110.23
2	C	201	NAG	O5-C1-C2	2.44	111.97	109.52
2	C	201	NAG	O6-C6-C5	2.29	119.15	111.29
3	C	202	TLA	O41-C4-O4	-2.10	119.33	124.09

There are no chirality outliers.

All (7) torsion outliers are listed below:

Mol	Chain	Res	Type	Atoms
2	C	201	NAG	C3-C2-N2-C7
3	C	202	TLA	C1-C2-C3-C4
3	C	202	TLA	O2-C2-C3-O3
3	C	202	TLA	C1-C2-C3-O3
3	C	202	TLA	O2-C2-C3-C4
2	C	201	NAG	C1-C2-N2-C7
2	C	201	NAG	C4-C5-C6-O6

There are no ring outliers.

2 monomers are involved in 10 short contacts:

Mol	Chain	Res	Type	Clashes	Symm-Clashes
2	C	201	NAG	9	0
3	C	202	TLA	1	0

5.7 Other polymers ⓘ

There are no such residues in this entry.

5.8 Polymer linkage issues ⓘ

There are no chain breaks in this entry.

6 Fit of model and data [i](#)

6.1 Protein, DNA and RNA chains [i](#)

In the following table, the column labelled ‘#RSRZ > 2’ contains the number (and percentage) of RSRZ outliers, followed by percent RSRZ outliers for the chain as percentile scores relative to all X-ray entries and entries of similar resolution. The OWAB column contains the minimum, median, 95th percentile and maximum values of the occupancy-weighted average B-factor per residue. The column labelled ‘Q < 0.9’ lists the number of (and percentage) of residues with an average occupancy less than 0.9.

Mol	Chain	Analysed	<RSRZ>	#RSRZ>2	OWAB(Å ²)	Q<0.9
1	A	171/171 (100%)	-0.54	7 (4%) 42 36	16, 30, 55, 100	0
1	B	171/171 (100%)	-0.49	3 (1%) 67 62	20, 35, 61, 90	0
1	C	171/171 (100%)	-0.67	2 (1%) 76 72	12, 28, 48, 96	0
1	D	171/171 (100%)	-0.53	4 (2%) 61 55	16, 30, 50, 98	0
All	All	684/684 (100%)	-0.56	16 (2%) 61 55	12, 30, 56, 100	0

All (16) RSRZ outliers are listed below:

Mol	Chain	Res	Type	RSRZ
1	A	3	PRO	4.8
1	A	2	ASP	4.0
1	A	6	CYS	4.0
1	A	5	ALA	3.9
1	B	2	ASP	3.8
1	D	113	ASN	3.0
1	D	2	ASP	3.0
1	D	3	PRO	2.9
1	A	4	PRO	2.7
1	B	171	ALA	2.6
1	C	2	ASP	2.5
1	C	3	PRO	2.5
1	A	1	GLU	2.4
1	A	7	GLY	2.2
1	B	5	ALA	2.1
1	D	5	ALA	2.0

6.2 Non-standard residues in protein, DNA, RNA chains [i](#)

There are no non-standard protein/DNA/RNA residues in this entry.

6.3 Carbohydrates [i](#)

There are no monosaccharides in this entry.

6.4 Ligands [i](#)

In the following table, the Atoms column lists the number of modelled atoms in the group and the number defined in the chemical component dictionary. The B-factors column lists the minimum, median, 95th percentile and maximum values of B factors of atoms in the group. The column labelled 'Q< 0.9' lists the number of atoms with occupancy less than 0.9.

Mol	Type	Chain	Res	Atoms	RSCC	RSR	B-factors(\AA^2)	Q<0.9
2	NAG	C	201	15/15	0.78	0.18	37,40,40,41	15
3	TLA	C	202	10/10	0.90	0.10	39,41,42,43	0

6.5 Other polymers [i](#)

There are no such residues in this entry.