



wwPDB EM Validation Summary Report ⓘ

Jun 30, 2025 – 06:49 PM EDT

PDB ID : 9E0U / pdb_00009e0u
EMDB ID : EMD-47371
Title : Cryo-EM structure of human cytoplasmic dynein-1 in the presence of ATP
Authors : Nguyen, K.H.V.; Kendrick, A.A.; Leschziner, A.E.
Deposited on : 2024-10-19
Resolution : 3.40 Å(reported)

This is a wwPDB EM Validation Summary Report for a publicly released PDB entry.

We welcome your comments at validation@mail.wwpdb.org

A user guide is available at

<https://www.wwpdb.org/validation/2017/EMValidationReportHelp>

with specific help available everywhere you see the ⓘ symbol.

The types of validation reports are described at

<http://www.wwpdb.org/validation/2017/FAQs#types>.

The following versions of software and data (see [references ⓘ](#)) were used in the production of this report:

EMDB validation analysis : 0.0.1.dev118
Mogul : 2022.3.0, CSD as543be (2022)
MolProbity : 4-5-2 with Phenix2.0rc1
buster-report : 1.1.7 (2018)
Percentile statistics : 20231227.v01 (using entries in the PDB archive December 27th 2023)
MapQ : 1.9.13
Ideal geometry (proteins) : Engh & Huber (2001)
Ideal geometry (DNA, RNA) : Parkinson et al. (1996)
Validation Pipeline (wwPDB-VP) : 2.44

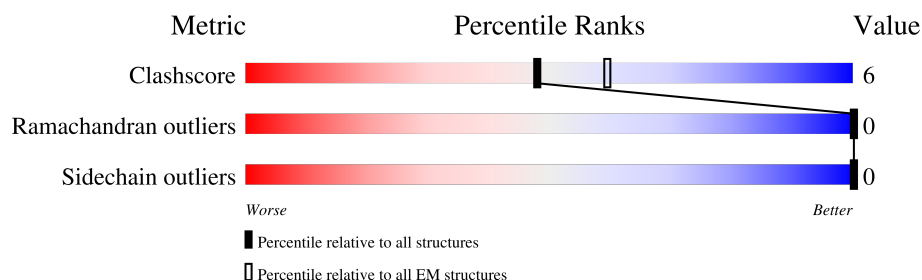
1 Overall quality at a glance

The following experimental techniques were used to determine the structure:

ELECTRON MICROSCOPY

The reported resolution of this entry is 3.40 Å.

Percentile scores (ranging between 0-100) for global validation metrics of the entry are shown in the following graphic. The table shows the number of entries on which the scores are based.



Metric	Whole archive (#Entries)	EM structures (#Entries)
Clashscore	210492	15764
Ramachandran outliers	207382	16835
Sidechain outliers	206894	16415

The table below summarises the geometric issues observed across the polymeric chains and their fit to the map. The red, orange, yellow and green segments of the bar indicate the fraction of residues that contain outliers for ≥ 3 , 2, 1 and 0 types of geometric quality criteria respectively. A grey segment represents the fraction of residues that are not modelled. The numeric value for each fraction is indicated below the corresponding segment, with a dot representing fractions $\leq 5\%$. The upper red bar (where present) indicates the fraction of residues that have poor fit to the EM map (all-atom inclusion $< 40\%$). The numeric value is given above the bar.

Mol	Chain	Length	Quality of chain
1	A	4843	<div> <div>9%</div> <div>49%</div> <div>9%</div> <div>43%</div> </div>

2 Entry composition

There are 4 unique types of molecules in this entry. The entry contains 22051 atoms, of which 0 are hydrogens and 0 are deuteriums.

In the tables below, the AltConf column contains the number of residues with at least one atom in alternate conformation and the Trace column contains the number of residues modelled with at most 2 atoms.

- Molecule 1 is a protein called Cytoplasmic dynein 1 heavy chain 1.

Mol	Chain	Residues	Atoms					AltConf	Trace
1	A	2783	Total	C	N	O	S	0	0
			21937	13991	3797	4041	108		

There are 198 discrepancies between the modelled and reference sequences:

Chain	Residue	Modelled	Actual	Comment	Reference
A	-196	GLY	-	expression tag	UNP Q14204
A	-195	ASP	-	expression tag	UNP Q14204
A	-194	TYR	-	expression tag	UNP Q14204
A	-193	ASP	-	expression tag	UNP Q14204
A	-192	ILE	-	expression tag	UNP Q14204
A	-191	PRO	-	expression tag	UNP Q14204
A	-190	THR	-	expression tag	UNP Q14204
A	-189	THR	-	expression tag	UNP Q14204
A	-188	GLU	-	expression tag	UNP Q14204
A	-187	ASN	-	expression tag	UNP Q14204
A	-186	LEU	-	expression tag	UNP Q14204
A	-185	TYR	-	expression tag	UNP Q14204
A	-184	PHE	-	expression tag	UNP Q14204
A	-183	GLN	-	expression tag	UNP Q14204
A	-182	GLY	-	expression tag	UNP Q14204
A	-181	ASP	-	expression tag	UNP Q14204
A	-180	LYS	-	expression tag	UNP Q14204
A	-179	ASP	-	expression tag	UNP Q14204
A	-178	CYS	-	expression tag	UNP Q14204
A	-177	GLU	-	expression tag	UNP Q14204
A	-176	MET	-	expression tag	UNP Q14204
A	-175	LYS	-	expression tag	UNP Q14204
A	-174	ARG	-	expression tag	UNP Q14204
A	-173	THR	-	expression tag	UNP Q14204
A	-172	THR	-	expression tag	UNP Q14204
A	-171	LEU	-	expression tag	UNP Q14204
A	-170	ASP	-	expression tag	UNP Q14204
A	-169	SER	-	expression tag	UNP Q14204

Continued on next page...

Continued from previous page...

Chain	Residue	Modelled	Actual	Comment	Reference
A	-168	PRO	-	expression tag	UNP Q14204
A	-167	LEU	-	expression tag	UNP Q14204
A	-166	GLY	-	expression tag	UNP Q14204
A	-165	LYS	-	expression tag	UNP Q14204
A	-164	LEU	-	expression tag	UNP Q14204
A	-163	GLU	-	expression tag	UNP Q14204
A	-162	LEU	-	expression tag	UNP Q14204
A	-161	SER	-	expression tag	UNP Q14204
A	-160	GLY	-	expression tag	UNP Q14204
A	-159	CYS	-	expression tag	UNP Q14204
A	-158	GLU	-	expression tag	UNP Q14204
A	-157	GLN	-	expression tag	UNP Q14204
A	-156	GLY	-	expression tag	UNP Q14204
A	-155	LEU	-	expression tag	UNP Q14204
A	-154	HIS	-	expression tag	UNP Q14204
A	-153	ARG	-	expression tag	UNP Q14204
A	-152	ILE	-	expression tag	UNP Q14204
A	-151	ILE	-	expression tag	UNP Q14204
A	-150	PHE	-	expression tag	UNP Q14204
A	-149	LEU	-	expression tag	UNP Q14204
A	-148	GLY	-	expression tag	UNP Q14204
A	-147	LYS	-	expression tag	UNP Q14204
A	-146	GLY	-	expression tag	UNP Q14204
A	-145	THR	-	expression tag	UNP Q14204
A	-144	SER	-	expression tag	UNP Q14204
A	-143	ALA	-	expression tag	UNP Q14204
A	-142	ALA	-	expression tag	UNP Q14204
A	-141	ASP	-	expression tag	UNP Q14204
A	-140	ALA	-	expression tag	UNP Q14204
A	-139	VAL	-	expression tag	UNP Q14204
A	-138	GLU	-	expression tag	UNP Q14204
A	-137	VAL	-	expression tag	UNP Q14204
A	-136	PRO	-	expression tag	UNP Q14204
A	-135	ALA	-	expression tag	UNP Q14204
A	-134	PRO	-	expression tag	UNP Q14204
A	-133	ALA	-	expression tag	UNP Q14204
A	-132	ALA	-	expression tag	UNP Q14204
A	-131	VAL	-	expression tag	UNP Q14204
A	-130	LEU	-	expression tag	UNP Q14204
A	-129	GLY	-	expression tag	UNP Q14204
A	-128	GLY	-	expression tag	UNP Q14204
A	-127	PRO	-	expression tag	UNP Q14204

Continued on next page...

Continued from previous page...

Chain	Residue	Modelled	Actual	Comment	Reference
A	-126	GLU	-	expression tag	UNP Q14204
A	-125	PRO	-	expression tag	UNP Q14204
A	-124	LEU	-	expression tag	UNP Q14204
A	-123	MET	-	expression tag	UNP Q14204
A	-122	GLN	-	expression tag	UNP Q14204
A	-121	ALA	-	expression tag	UNP Q14204
A	-120	THR	-	expression tag	UNP Q14204
A	-119	ALA	-	expression tag	UNP Q14204
A	-118	TRP	-	expression tag	UNP Q14204
A	-117	LEU	-	expression tag	UNP Q14204
A	-116	ASN	-	expression tag	UNP Q14204
A	-115	ALA	-	expression tag	UNP Q14204
A	-114	TYR	-	expression tag	UNP Q14204
A	-113	PHE	-	expression tag	UNP Q14204
A	-112	HIS	-	expression tag	UNP Q14204
A	-111	GLN	-	expression tag	UNP Q14204
A	-110	PRO	-	expression tag	UNP Q14204
A	-109	GLU	-	expression tag	UNP Q14204
A	-108	ALA	-	expression tag	UNP Q14204
A	-107	ILE	-	expression tag	UNP Q14204
A	-106	GLU	-	expression tag	UNP Q14204
A	-105	GLU	-	expression tag	UNP Q14204
A	-104	PHE	-	expression tag	UNP Q14204
A	-103	PRO	-	expression tag	UNP Q14204
A	-102	VAL	-	expression tag	UNP Q14204
A	-101	PRO	-	expression tag	UNP Q14204
A	-100	ALA	-	expression tag	UNP Q14204
A	-99	LEU	-	expression tag	UNP Q14204
A	-98	HIS	-	expression tag	UNP Q14204
A	-97	HIS	-	expression tag	UNP Q14204
A	-96	PRO	-	expression tag	UNP Q14204
A	-95	VAL	-	expression tag	UNP Q14204
A	-94	PHE	-	expression tag	UNP Q14204
A	-93	GLN	-	expression tag	UNP Q14204
A	-92	GLN	-	expression tag	UNP Q14204
A	-91	GLU	-	expression tag	UNP Q14204
A	-90	SER	-	expression tag	UNP Q14204
A	-89	PHE	-	expression tag	UNP Q14204
A	-88	THR	-	expression tag	UNP Q14204
A	-87	ARG	-	expression tag	UNP Q14204
A	-86	GLN	-	expression tag	UNP Q14204
A	-85	VAL	-	expression tag	UNP Q14204

Continued on next page...

Continued from previous page...

Chain	Residue	Modelled	Actual	Comment	Reference
A	-84	LEU	-	expression tag	UNP Q14204
A	-83	TRP	-	expression tag	UNP Q14204
A	-82	LYS	-	expression tag	UNP Q14204
A	-81	LEU	-	expression tag	UNP Q14204
A	-80	LEU	-	expression tag	UNP Q14204
A	-79	LYS	-	expression tag	UNP Q14204
A	-78	VAL	-	expression tag	UNP Q14204
A	-77	VAL	-	expression tag	UNP Q14204
A	-76	LYS	-	expression tag	UNP Q14204
A	-75	PHE	-	expression tag	UNP Q14204
A	-74	GLY	-	expression tag	UNP Q14204
A	-73	GLU	-	expression tag	UNP Q14204
A	-72	VAL	-	expression tag	UNP Q14204
A	-71	ILE	-	expression tag	UNP Q14204
A	-70	SER	-	expression tag	UNP Q14204
A	-69	TYR	-	expression tag	UNP Q14204
A	-68	SER	-	expression tag	UNP Q14204
A	-67	HIS	-	expression tag	UNP Q14204
A	-66	LEU	-	expression tag	UNP Q14204
A	-65	ALA	-	expression tag	UNP Q14204
A	-64	ALA	-	expression tag	UNP Q14204
A	-63	LEU	-	expression tag	UNP Q14204
A	-62	ALA	-	expression tag	UNP Q14204
A	-61	GLY	-	expression tag	UNP Q14204
A	-60	ASN	-	expression tag	UNP Q14204
A	-59	PRO	-	expression tag	UNP Q14204
A	-58	ALA	-	expression tag	UNP Q14204
A	-57	ALA	-	expression tag	UNP Q14204
A	-56	THR	-	expression tag	UNP Q14204
A	-55	ALA	-	expression tag	UNP Q14204
A	-54	ALA	-	expression tag	UNP Q14204
A	-53	VAL	-	expression tag	UNP Q14204
A	-52	LYS	-	expression tag	UNP Q14204
A	-51	THR	-	expression tag	UNP Q14204
A	-50	ALA	-	expression tag	UNP Q14204
A	-49	LEU	-	expression tag	UNP Q14204
A	-48	SER	-	expression tag	UNP Q14204
A	-47	GLY	-	expression tag	UNP Q14204
A	-46	ASN	-	expression tag	UNP Q14204
A	-45	PRO	-	expression tag	UNP Q14204
A	-44	VAL	-	expression tag	UNP Q14204
A	-43	PRO	-	expression tag	UNP Q14204

Continued on next page...

Continued from previous page...

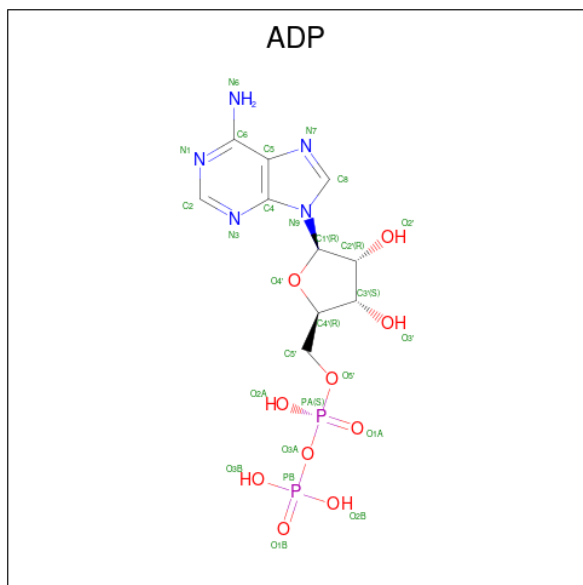
Chain	Residue	Modelled	Actual	Comment	Reference
A	-42	ILE	-	expression tag	UNP Q14204
A	-41	LEU	-	expression tag	UNP Q14204
A	-40	ILE	-	expression tag	UNP Q14204
A	-39	PRO	-	expression tag	UNP Q14204
A	-38	CYS	-	expression tag	UNP Q14204
A	-37	HIS	-	expression tag	UNP Q14204
A	-36	ARG	-	expression tag	UNP Q14204
A	-35	VAL	-	expression tag	UNP Q14204
A	-34	VAL	-	expression tag	UNP Q14204
A	-33	GLN	-	expression tag	UNP Q14204
A	-32	GLY	-	expression tag	UNP Q14204
A	-31	ASP	-	expression tag	UNP Q14204
A	-30	LEU	-	expression tag	UNP Q14204
A	-29	ASP	-	expression tag	UNP Q14204
A	-28	VAL	-	expression tag	UNP Q14204
A	-27	GLY	-	expression tag	UNP Q14204
A	-26	GLY	-	expression tag	UNP Q14204
A	-25	TYR	-	expression tag	UNP Q14204
A	-24	GLU	-	expression tag	UNP Q14204
A	-23	GLY	-	expression tag	UNP Q14204
A	-22	GLY	-	expression tag	UNP Q14204
A	-21	LEU	-	expression tag	UNP Q14204
A	-20	ALA	-	expression tag	UNP Q14204
A	-19	VAL	-	expression tag	UNP Q14204
A	-18	LYS	-	expression tag	UNP Q14204
A	-17	GLU	-	expression tag	UNP Q14204
A	-16	TRP	-	expression tag	UNP Q14204
A	-15	LEU	-	expression tag	UNP Q14204
A	-14	LEU	-	expression tag	UNP Q14204
A	-13	ALA	-	expression tag	UNP Q14204
A	-12	HIS	-	expression tag	UNP Q14204
A	-11	GLU	-	expression tag	UNP Q14204
A	-10	GLY	-	expression tag	UNP Q14204
A	-9	HIS	-	expression tag	UNP Q14204
A	-8	ARG	-	expression tag	UNP Q14204
A	-7	LEU	-	expression tag	UNP Q14204
A	-6	GLY	-	expression tag	UNP Q14204
A	-5	LYS	-	expression tag	UNP Q14204
A	-4	PRO	-	expression tag	UNP Q14204
A	-3	GLY	-	expression tag	UNP Q14204
A	-2	LEU	-	expression tag	UNP Q14204
A	-1	GLY	-	expression tag	UNP Q14204

Continued on next page...

Continued from previous page...

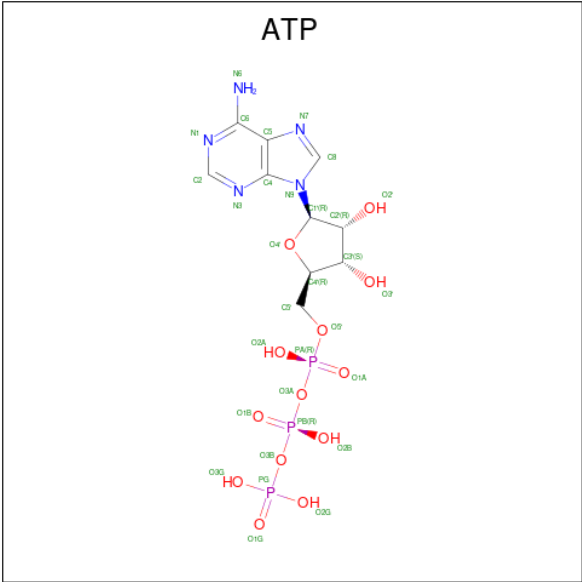
Chain	Residue	Modelled	Actual	Comment	Reference
A	0	GLY	-	expression tag	UNP Q14204
A	1	SER	-	expression tag	UNP Q14204

- Molecule 2 is ADENOSINE-5'-DIPHOSPHATE (CCD ID: ADP) (formula: $C_{10}H_{15}N_5O_{10}P_2$) (labeled as "Ligand of Interest" by depositor).



Mol	Chain	Residues	Atoms					AltConf
2	A	1	Total	C	N	O	P	0
			27	10	5	10	2	
2	A	1	Total	C	N	O	P	0
			27	10	5	10	2	
2	A	1	Total	C	N	O	P	0
			27	10	5	10	2	

- Molecule 3 is ADENOSINE-5'-TRIPHOSPHATE (CCD ID: ATP) (formula: $C_{10}H_{16}N_5O_{13}P_3$) (labeled as "Ligand of Interest" by depositor).



Mol	Chain	Residues	Atoms					AltConf
3	A	1	Total	C	N	O	P	0
			31	10	5	13	3	

- Molecule 4 is MAGNESIUM ION (CCD ID: MG) (formula: Mg) (labeled as "Ligand of Interest" by depositor).

Mol	Chain	Residues	Atoms		AltConf
4	A	2	Total	Mg	0
			2	2	





K4574	L4575	N4579	L4585	Q4589	L4590	R4591	W4592	Q4595	THR	ASN	THR	GLU	LYS	ALA	S4603	V4609	M4612	A4616	D4617	V4622	T4628	R4633	V4642	E4646																										
E4454	K4457	L4460	P4461	S4465	P4470	A4471	G4472	I4476	Q4477	A4497	S4498	GLY	GLY	ALA	K4502	E4503	L4504	K4505	M4506	I4507	H4508	L4514	T4524	R4525	Q4526	Y4527	V4528	V4543	M4544	THR	THR	SER	GLN	ALA	THR	LEU	ASP	GLU	ALA	L4431	A4432	D4433	V4434	V4437	K4441	K4442	K4443	N4453		
T4274	T4275	A4276	S4277	C4286	K4287	V4288	D4289	C4290	H4291	D4298	G4299	I4300	R4301	E4310	D4314	P4318	S4319	W4320	L4321	M4325	M4326	D4338	M4339	K4342	M4343	L4344	K4345	M4346	Q4347	M4348	L4349	E4350	ASP	GLU	ASP	ASP	LEU	ALA	TYR	ALA	GLU	THR	GLU	LYS	THR	ARG	THR	SER	THR	
P3966	V3970	P3971	Y3972	L3973	W3974	SER	GLU	GLU	T3978	P3979	A3980	T3981	G3984	I3983	D3999	R4000	M4004	M4007	F4008	V4009	P4037	L4042	D4057	E4061	Q4062	M4063	T4067	S4068	L4071	A4074	F4077	K4089	R4092	K4097	H4100	L4106	Q4117	P4118												
M4128	E4129	K4133	E4148	P4149	K4154	L4158	R4159	T4160	P4165	V4166	S4167	R4168	T4169	C4170	R4178	W4185	F4186	H4187	Q4191	E4192	E4206	L4212	R4213	T4218	T4221	W4222	L4223	D4224	D4225	T4226	A4227	K4228	T4233	P4239	A4242	L4246	R4255	R4271	L4272	F4273										
R3870	R3873	Q3878	T3882	F3883	A3884	T3895	VAL	G3897	D3902	R3910	E3913	I3914	V3915	L3916	S3917	A3918	G3919	S3920	T3921	P3922	R3923	I3924	Q3925	G3926	L3927	T3928	V3929	E3930	Q3931	A3932	V3935	V3936	S3939	C3940	L3941	P3942	K3945	D3946	L3947	I3948	A3949	K3950	A3953	D3954	E3955	Q3956	L3961			
V3756	K3757	R3758	R3759	L3760	L3761	T3762	D3763	D3764	T3765	L3766	L3767	T3768	T3769	L3770	E3771	N3772	L3773	K3774	R3775	E3776	A3777	A3778	E3779	V3780	T3781	R3782	E3785	L3789	V3790	K3791	Q3792	E3795	Q3799	Q3800	C3808	L3818	G3736	L3740	R3741	L3742	R3743	T3744	L3745	E3746	K3747	L3816	S3748	Q3751	N3754	E3755
A3484	E3485	R3486	E3487	E3490	K3491	T3492	R3493	E3494	T3495	F3496	K3497	R3498	Q3499	M3500	D3506	A3517	F3520	M3524	R3525	Q3537	D3691	L3692	C3693	S3694	V3699	R3705	S3710	N3714	D3557	E3558	R3559	D3570	R3585	T3589	L3590	P3592	T3597	M3601	F3614	L3615	D3616	D3617	A3618	R3628						
F3629	R3654	R3655	T3656	G3657	G3658	R3659	V3660	L3664	G3665	D3666	D3668	L3669	D3670	T3681	R3682	D3683	P3684	F3688	D3691	L3692	C3693	S3694	V3699	R3705	S3710	N3714	D3557	E3558	R3559	D3570	R3585	T3589	L3590	P3592	T3597	M3601	F3614	L3615	D3616	D3617	A3618	R3628								

4 Experimental information

Property	Value	Source
EM reconstruction method	SINGLE PARTICLE	Depositor
Imposed symmetry	POINT, Not provided	
Number of particles used	13958	Depositor
Resolution determination method	FSC 0.143 CUT-OFF	Depositor
CTF correction method	PHASE FLIPPING AND AMPLITUDE CORRECTION	Depositor
Microscope	TFS KRIOS	Depositor
Voltage (kV)	300	Depositor
Electron dose ($e^-/\text{\AA}^2$)	55	Depositor
Minimum defocus (nm)	610	Depositor
Maximum defocus (nm)	3250	Depositor
Magnification	Not provided	
Image detector	FEI FALCON IV (4k x 4k)	Depositor
Maximum map value	0.636	Depositor
Minimum map value	-0.333	Depositor
Average map value	0.000	Depositor
Map value standard deviation	0.022	Depositor
Recommended contour level	0.155	Depositor
Map size (Å)	329.12, 329.12, 329.12	wwPDB
Map dimensions	352, 352, 352	wwPDB
Map angles (°)	90.0, 90.0, 90.0	wwPDB
Pixel spacing (Å)	0.935, 0.935, 0.935	Depositor

5 Model quality [i](#)

5.1 Standard geometry [i](#)

Bond lengths and bond angles in the following residue types are not validated in this section: ATP, MG, ADP

The Z score for a bond length (or angle) is the number of standard deviations the observed value is removed from the expected value. A bond length (or angle) with $|Z| > 5$ is considered an outlier worth inspection. RMSZ is the root-mean-square of all Z scores of the bond lengths (or angles).

Mol	Chain	Bond lengths		Bond angles	
		RMSZ	$\# Z > 5$	RMSZ	$\# Z > 5$
1	A	0.19	0/22387	0.35	0/30374

There are no bond length outliers.

There are no bond angle outliers.

There are no chirality outliers.

There are no planarity outliers.

5.2 Too-close contacts [i](#)

In the following table, the Non-H and H(model) columns list the number of non-hydrogen atoms and hydrogen atoms in the chain respectively. The H(added) column lists the number of hydrogen atoms added and optimized by MolProbity. The Clashes column lists the number of clashes within the asymmetric unit, whereas Symm-Clashes lists symmetry-related clashes.

Mol	Chain	Non-H	H(model)	H(added)	Clashes	Symm-Clashes
1	A	21937	0	21795	251	0
2	A	81	0	36	1	0
3	A	31	0	12	2	0
4	A	2	0	0	0	0
All	All	22051	0	21843	251	0

The all-atom clashscore is defined as the number of clashes found per 1000 atoms (including hydrogen atoms). The all-atom clashscore for this structure is 6.

The worst 5 of 251 close contacts within the same asymmetric unit are listed below, sorted by their clash magnitude.

Atom-1	Atom-2	Interatomic distance (Å)	Clash overlap (Å)
1:A:3808:CYS:SG	1:A:3836:TYR:OH	2.46	0.74
1:A:3818:LEU:HA	1:A:4346:MET:HE1	1.73	0.71
1:A:3808:CYS:HG	1:A:3836:TYR:HH	1.38	0.70
1:A:3922:PRO:HD2	1:A:3932:ALA:HB1	1.74	0.70
1:A:3981:THR:HG23	1:A:3984:GLY:H	1.58	0.68

There are no symmetry-related clashes.

5.3 Torsion angles [i](#)

5.3.1 Protein backbone [i](#)

In the following table, the Percentiles column shows the percent Ramachandran outliers of the chain as a percentile score with respect to all PDB entries followed by that with respect to all EM entries.

The Analysed column shows the number of residues for which the backbone conformation was analysed, and the total number of residues.

Mol	Chain	Analysed	Favoured	Allowed	Outliers	Percentiles	
1	A	2755/4843 (57%)	2659 (96%)	96 (4%)	0	100	100

There are no Ramachandran outliers to report.

5.3.2 Protein sidechains [i](#)

In the following table, the Percentiles column shows the percent sidechain outliers of the chain as a percentile score with respect to all PDB entries followed by that with respect to all EM entries.

The Analysed column shows the number of residues for which the sidechain conformation was analysed, and the total number of residues.

Mol	Chain	Analysed	Rotameric	Outliers	Percentiles	
1	A	2371/4279 (55%)	2371 (100%)	0	100	100

There are no protein residues with a non-rotameric sidechain to report.

Sometimes sidechains can be flipped to improve hydrogen bonding and reduce clashes. 5 of 26 such sidechains are listed below:

Mol	Chain	Res	Type
1	A	3155	HIS
1	A	3820	GLN
1	A	4532	ASN
1	A	3667	GLN
1	A	3843	ASN

5.3.3 RNA [i](#)

There are no RNA molecules in this entry.

5.4 Non-standard residues in protein, DNA, RNA chains [i](#)

There are no non-standard protein/DNA/RNA residues in this entry.

5.5 Carbohydrates [i](#)

There are no oligosaccharides in this entry.

5.6 Ligand geometry [i](#)

Of 6 ligands modelled in this entry, 2 are monoatomic - leaving 4 for Mogul analysis.

In the following table, the Counts columns list the number of bonds (or angles) for which Mogul statistics could be retrieved, the number of bonds (or angles) that are observed in the model and the number of bonds (or angles) that are defined in the Chemical Component Dictionary. The Link column lists molecule types, if any, to which the group is linked. The Z score for a bond length (or angle) is the number of standard deviations the observed value is removed from the expected value. A bond length (or angle) with $|Z| > 2$ is considered an outlier worth inspection. RMSZ is the root-mean-square of all Z scores of the bond lengths (or angles).

Mol	Type	Chain	Res	Link	Bond lengths			Bond angles		
					Counts	RMSZ	$\# Z > 2$	Counts	RMSZ	$\# Z > 2$
2	ADP	A	4801	4	24,29,29	0.86	0	29,45,45	1.20	2 (6%)
2	ADP	A	4804	-	24,29,29	0.82	0	29,45,45	1.29	2 (6%)
3	ATP	A	4802	4	28,33,33	0.79	0	34,52,52	0.89	2 (5%)
2	ADP	A	4805	-	24,29,29	0.84	0	29,45,45	1.17	2 (6%)

In the following table, the Chirals column lists the number of chiral outliers, the number of chiral centers analysed, the number of these observed in the model and the number defined in the Chemical Component Dictionary. Similar counts are reported in the Torsion and Rings columns. '-' means no outliers of that kind were identified.

Mol	Type	Chain	Res	Link	Chirals	Torsions	Rings
2	ADP	A	4801	4	-	3/12/32/32	0/3/3/3
2	ADP	A	4804	-	-	5/12/32/32	0/3/3/3
3	ATP	A	4802	4	-	3/18/38/38	0/3/3/3
2	ADP	A	4805	-	-	4/12/32/32	0/3/3/3

There are no bond length outliers.

The worst 5 of 8 bond angle outliers are listed below:

Mol	Chain	Res	Type	Atoms	Z	Observed(°)	Ideal(°)
2	A	4804	ADP	N3-C2-N1	-3.93	123.34	128.67
3	A	4802	ATP	C4'-O4'-C1'	-3.76	106.48	109.92
2	A	4801	ADP	N3-C2-N1	-3.67	123.69	128.67
2	A	4805	ADP	N3-C2-N1	-3.63	123.75	128.67
2	A	4805	ADP	C4-C5-N7	-2.59	106.60	109.34

There are no chirality outliers.

5 of 15 torsion outliers are listed below:

Mol	Chain	Res	Type	Atoms
2	A	4801	ADP	C5'-O5'-PA-O1A
2	A	4801	ADP	O4'-C4'-C5'-O5'
2	A	4801	ADP	C3'-C4'-C5'-O5'
2	A	4804	ADP	C5'-O5'-PA-O1A
2	A	4805	ADP	O4'-C4'-C5'-O5'

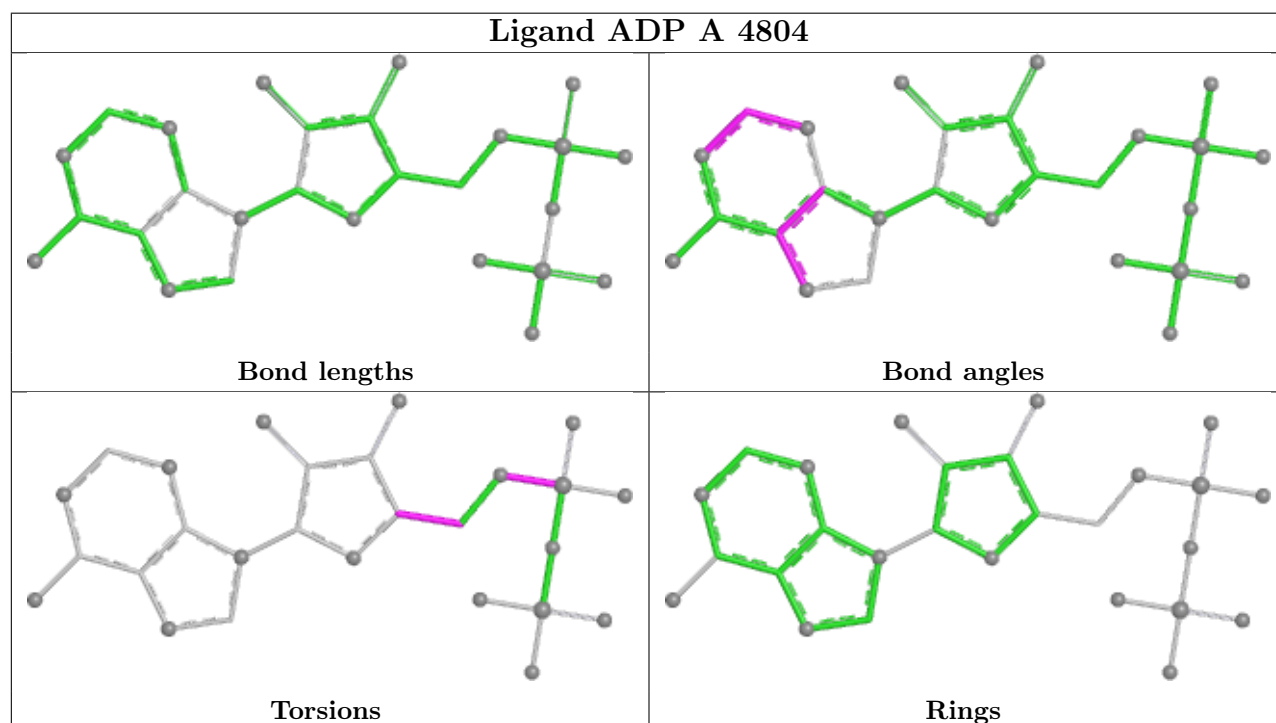
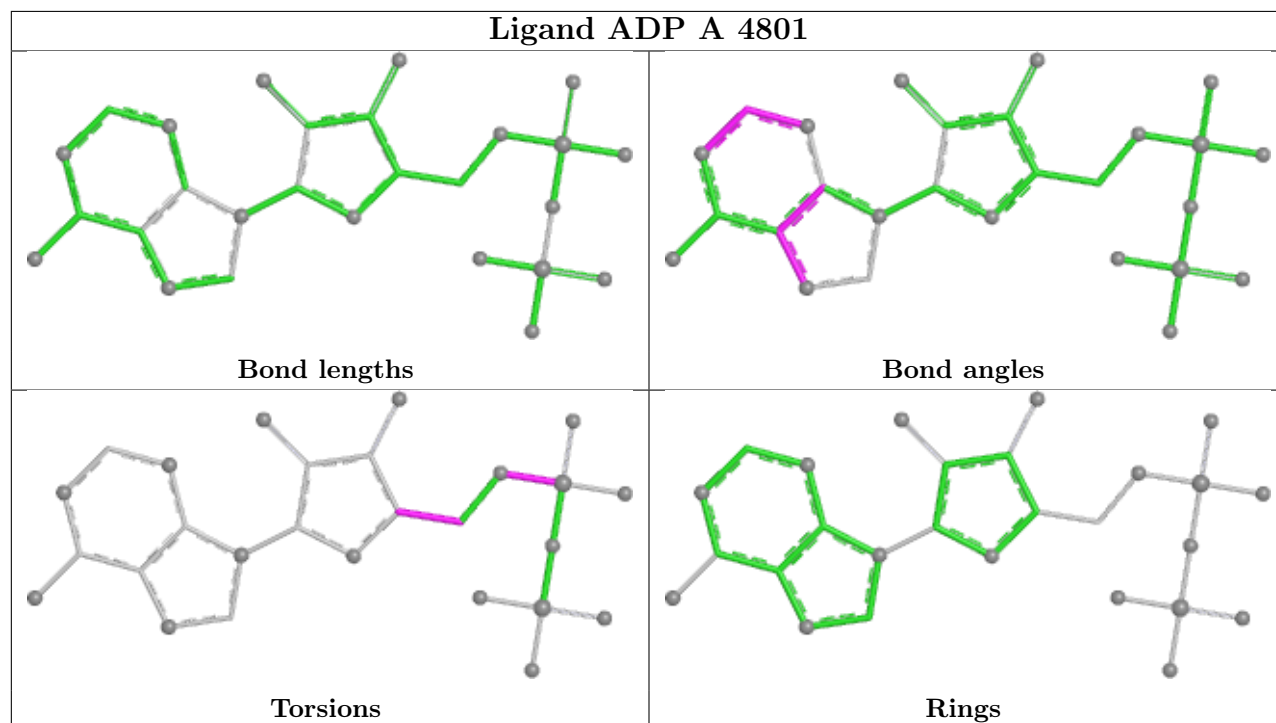
There are no ring outliers.

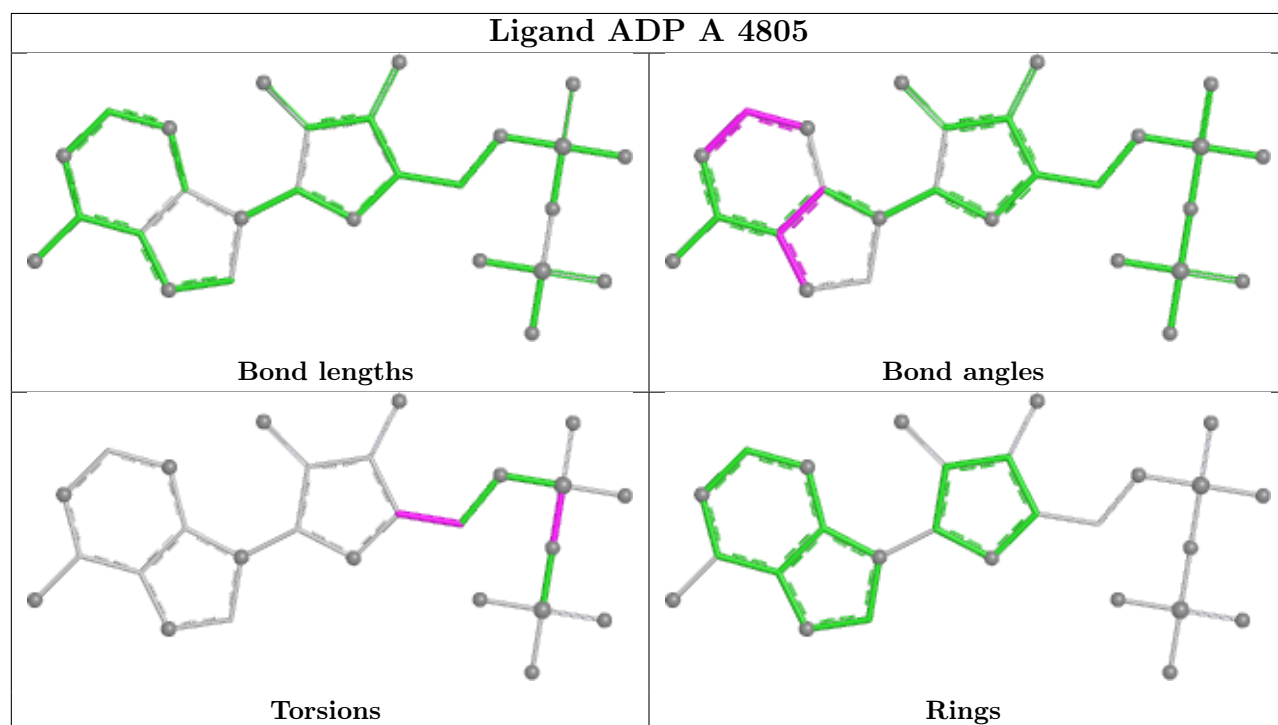
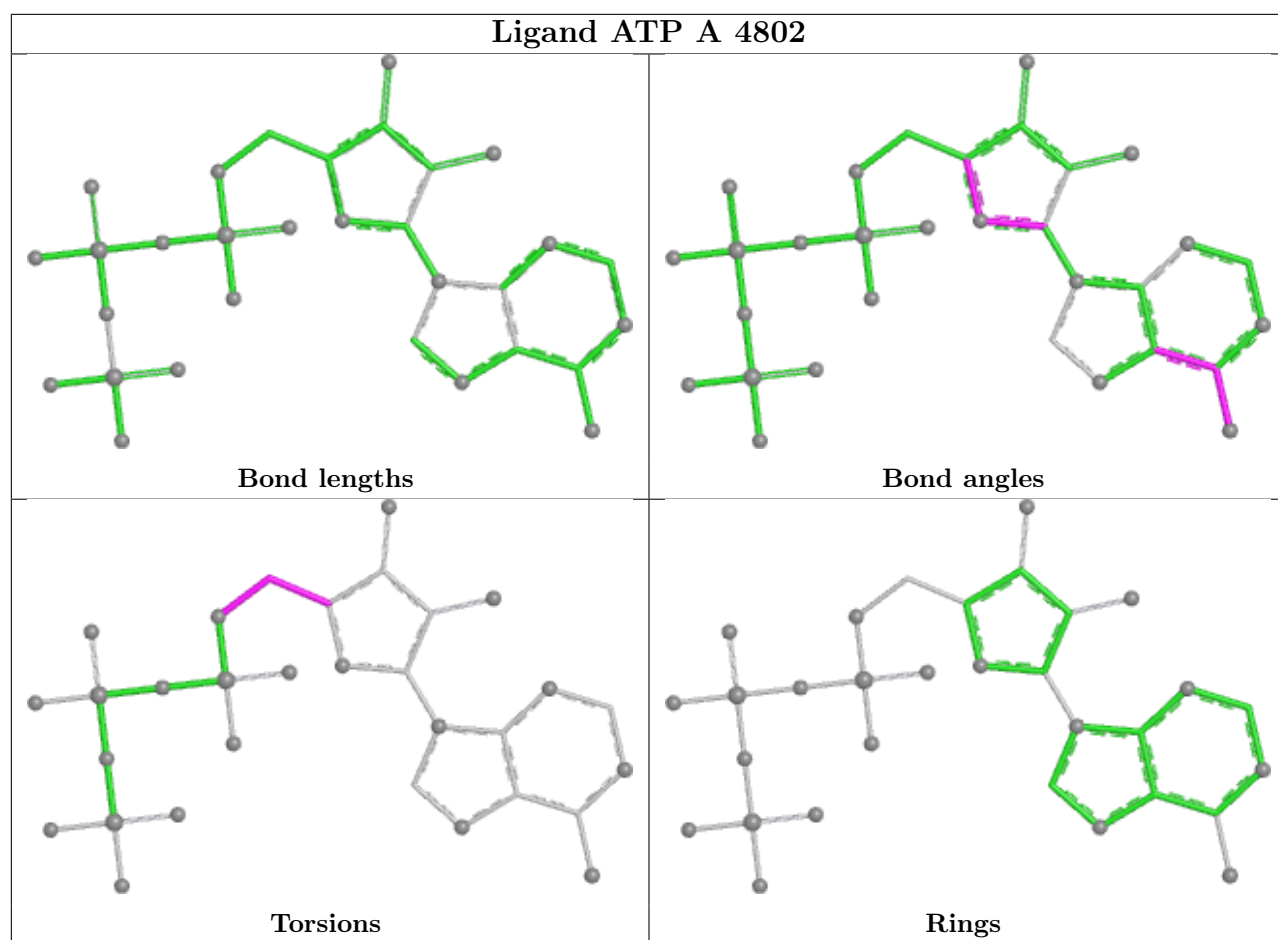
2 monomers are involved in 3 short contacts:

Mol	Chain	Res	Type	Clashes	Symm-Clashes
3	A	4802	ATP	2	0
2	A	4805	ADP	1	0

The following is a two-dimensional graphical depiction of Mogul quality analysis of bond lengths, bond angles, torsion angles, and ring geometry for all instances of the Ligand of Interest. In addition, ligands with molecular weight > 250 and outliers as shown on the validation Tables will also be included. For torsion angles, if less than 5% of the Mogul distribution of torsion angles is within 10 degrees of the torsion angle in question, then that torsion angle is considered an outlier. Any bond that is central to one or more torsion angles identified as an outlier by Mogul will be highlighted in the graph. For rings, the root-mean-square deviation (RMSD) between the ring in question and similar rings identified by Mogul is calculated over all ring torsion angles. If the average RMSD is greater than 60 degrees and the minimal RMSD between the ring in question and

any Mogul-identified rings is also greater than 60 degrees, then that ring is considered an outlier. The outliers are highlighted in purple. The color gray indicates Mogul did not find sufficient equivalents in the CSD to analyse the geometry.





5.7 Other polymers [i](#)

There are no such residues in this entry.

5.8 Polymer linkage issues [i](#)

There are no chain breaks in this entry.

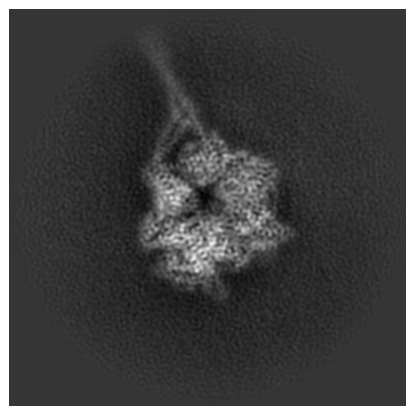
6 Map visualisation [i](#)

This section contains visualisations of the EMDB entry EMD-47371. These allow visual inspection of the internal detail of the map and identification of artifacts.

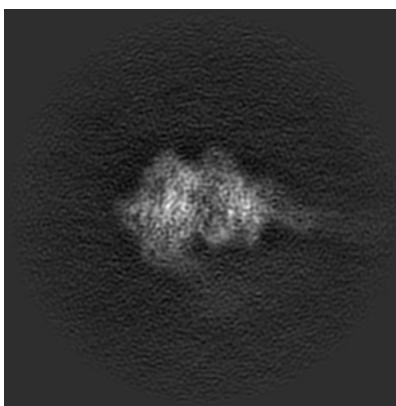
Images derived from a raw map, generated by summing the deposited half-maps, are presented below the corresponding image components of the primary map to allow further visual inspection and comparison with those of the primary map.

6.1 Orthogonal projections [i](#)

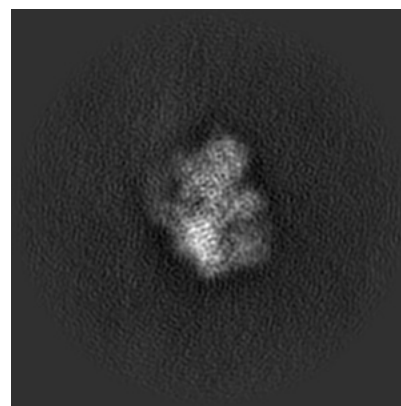
6.1.1 Primary map



X

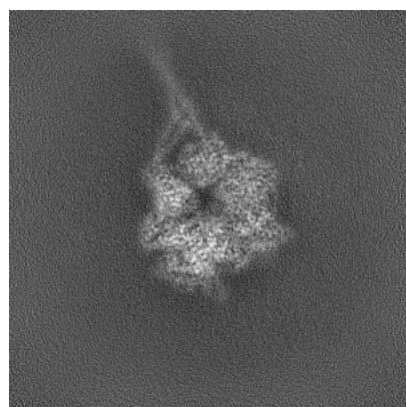


Y

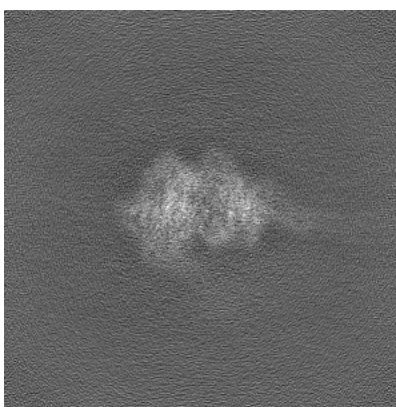


Z

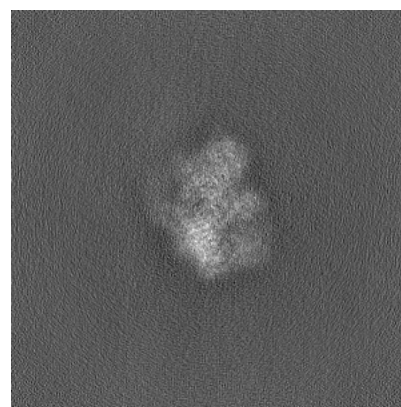
6.1.2 Raw map



X



Y

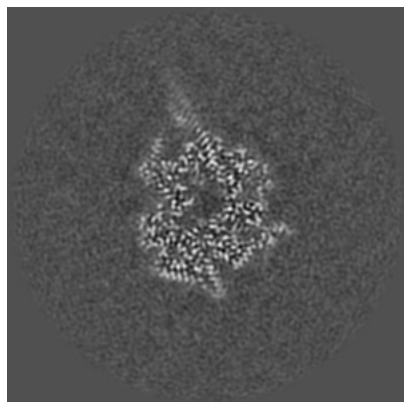


Z

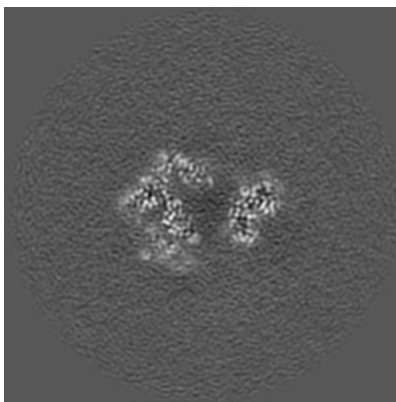
The images above show the map projected in three orthogonal directions.

6.2 Central slices [i](#)

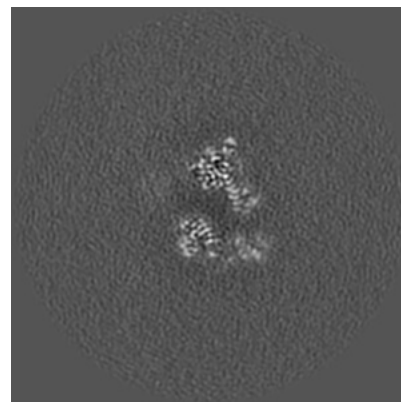
6.2.1 Primary map



X Index: 176

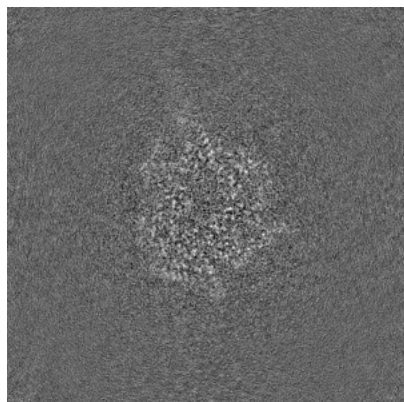


Y Index: 176

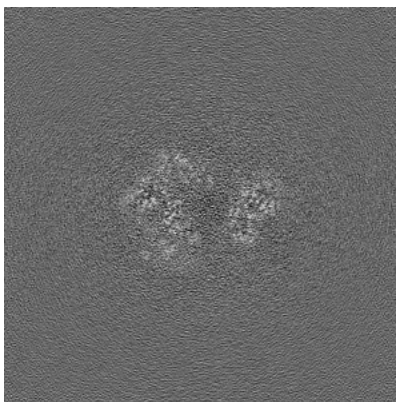


Z Index: 176

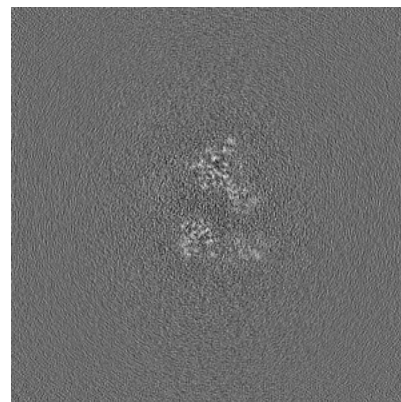
6.2.2 Raw map



X Index: 176



Y Index: 176

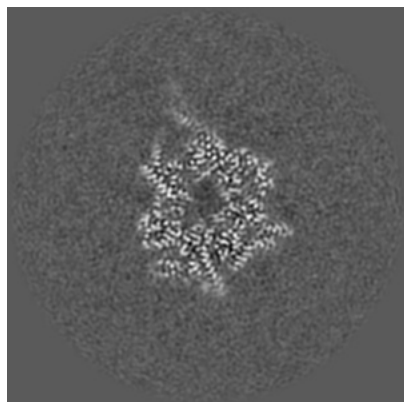


Z Index: 176

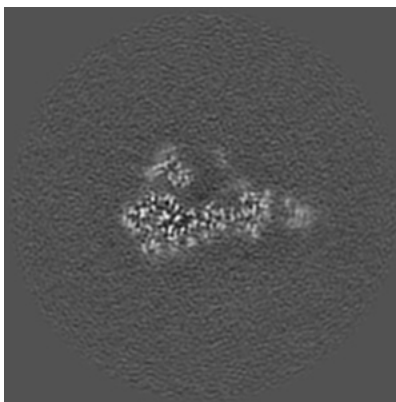
The images above show central slices of the map in three orthogonal directions.

6.3 Largest variance slices [i](#)

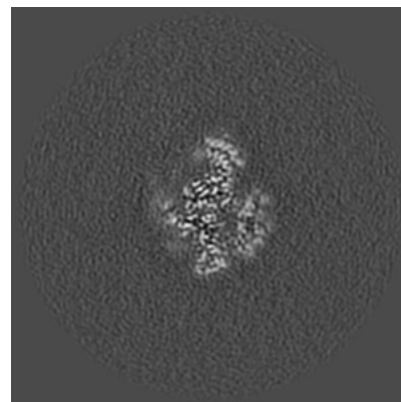
6.3.1 Primary map



X Index: 179

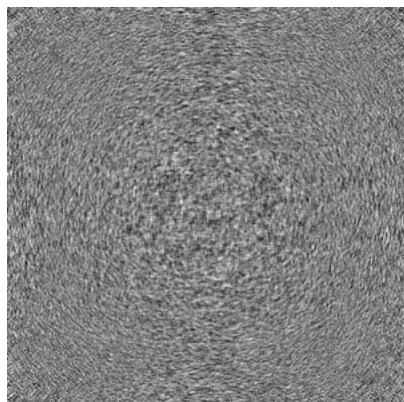


Y Index: 160

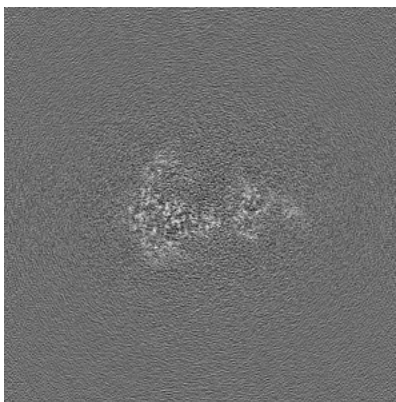


Z Index: 145

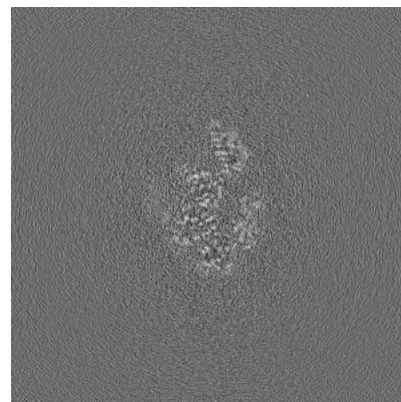
6.3.2 Raw map



X Index: 0



Y Index: 164

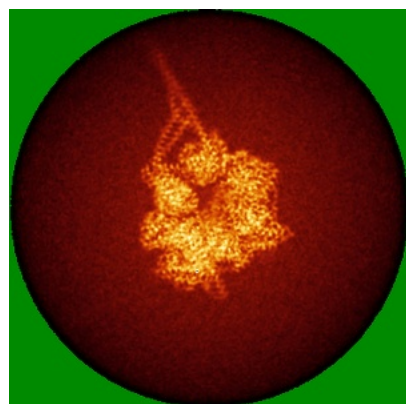


Z Index: 154

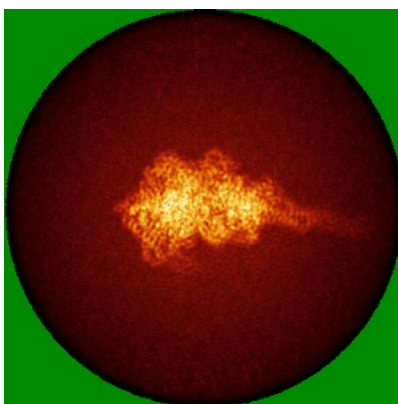
The images above show the largest variance slices of the map in three orthogonal directions.

6.4 Orthogonal standard-deviation projections (False-color) [i](#)

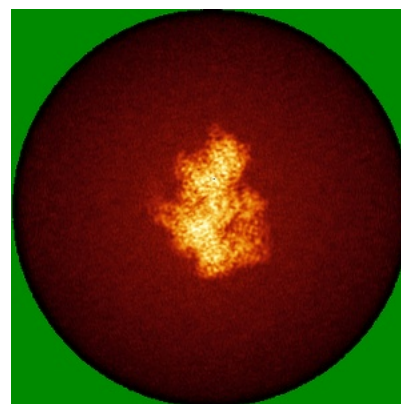
6.4.1 Primary map



X

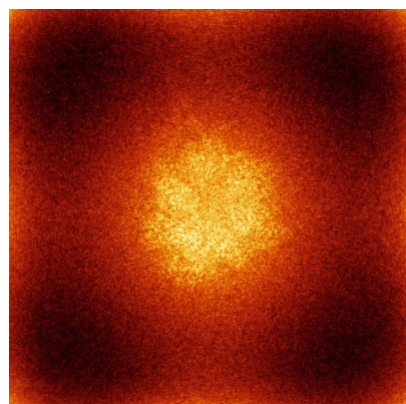


Y

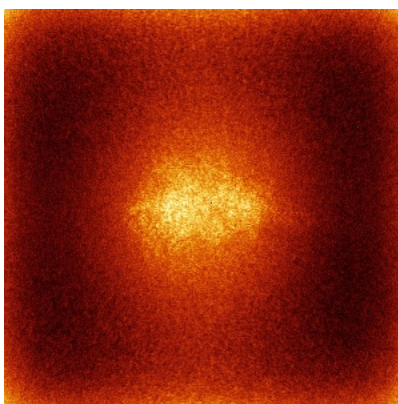


Z

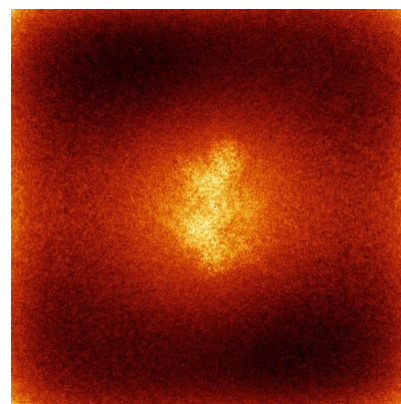
6.4.2 Raw map



X



Y



Z

The images above show the map standard deviation projections with false color in three orthogonal directions. Minimum values are shown in green, max in blue, and dark to light orange shades represent small to large values respectively.

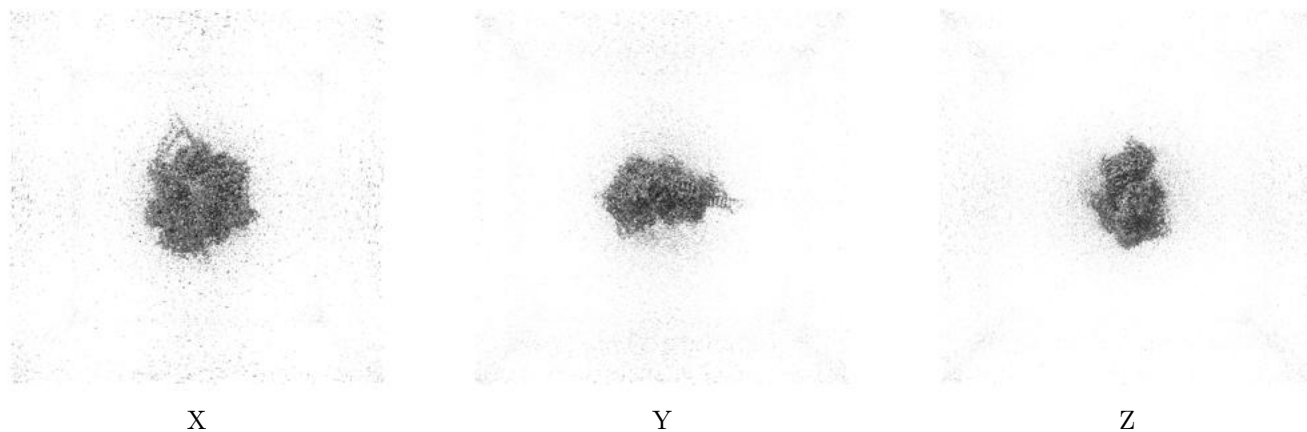
6.5 Orthogonal surface views [i](#)

6.5.1 Primary map



The images above show the 3D surface view of the map at the recommended contour level 0.155. These images, in conjunction with the slice images, may facilitate assessment of whether an appropriate contour level has been provided.

6.5.2 Raw map



These images show the 3D surface of the raw map. The raw map's contour level was selected so that its surface encloses the same volume as the primary map does at its recommended contour level.

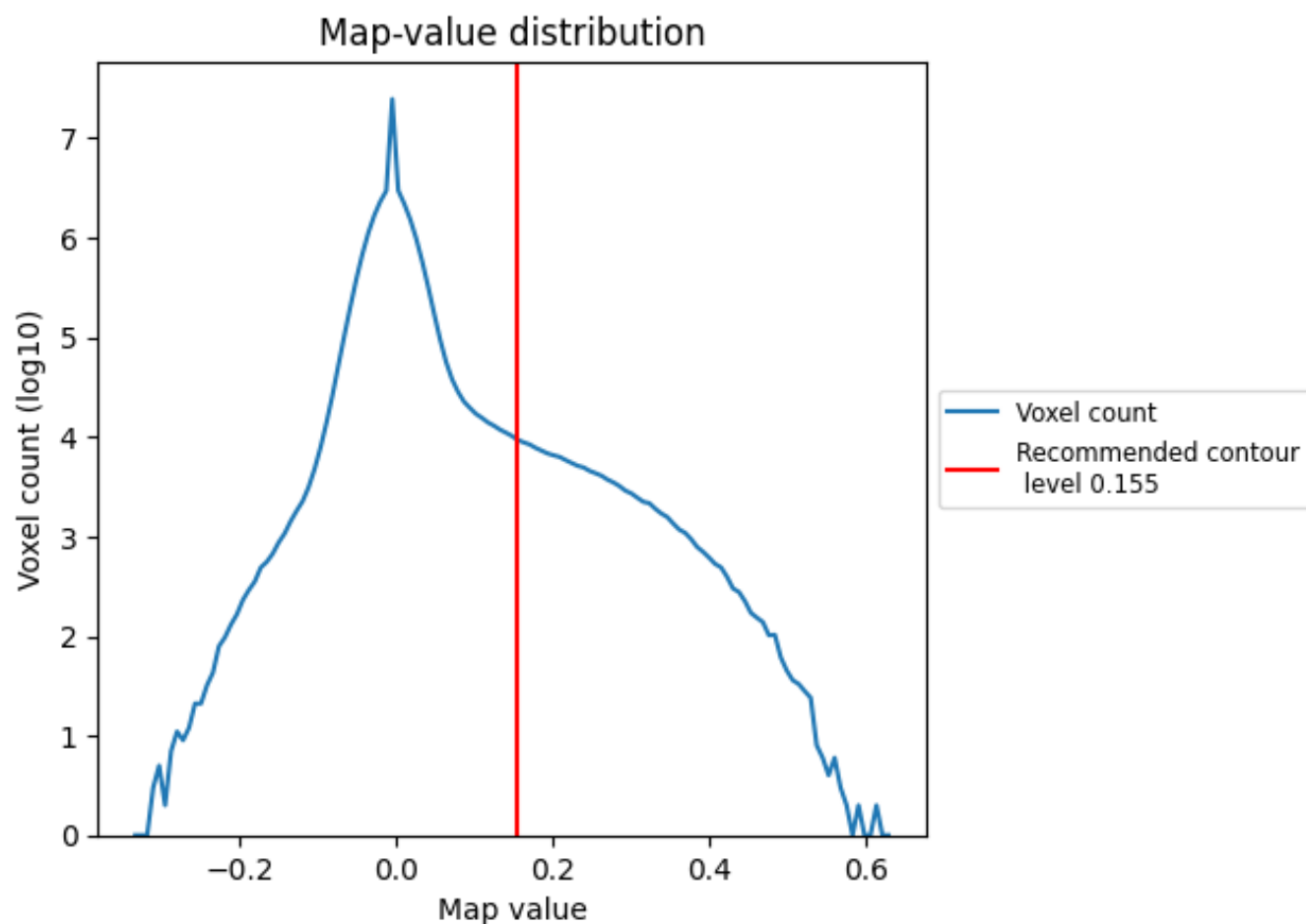
6.6 Mask visualisation [i](#)

This section was not generated. No masks/segmentation were deposited.

7 Map analysis [i](#)

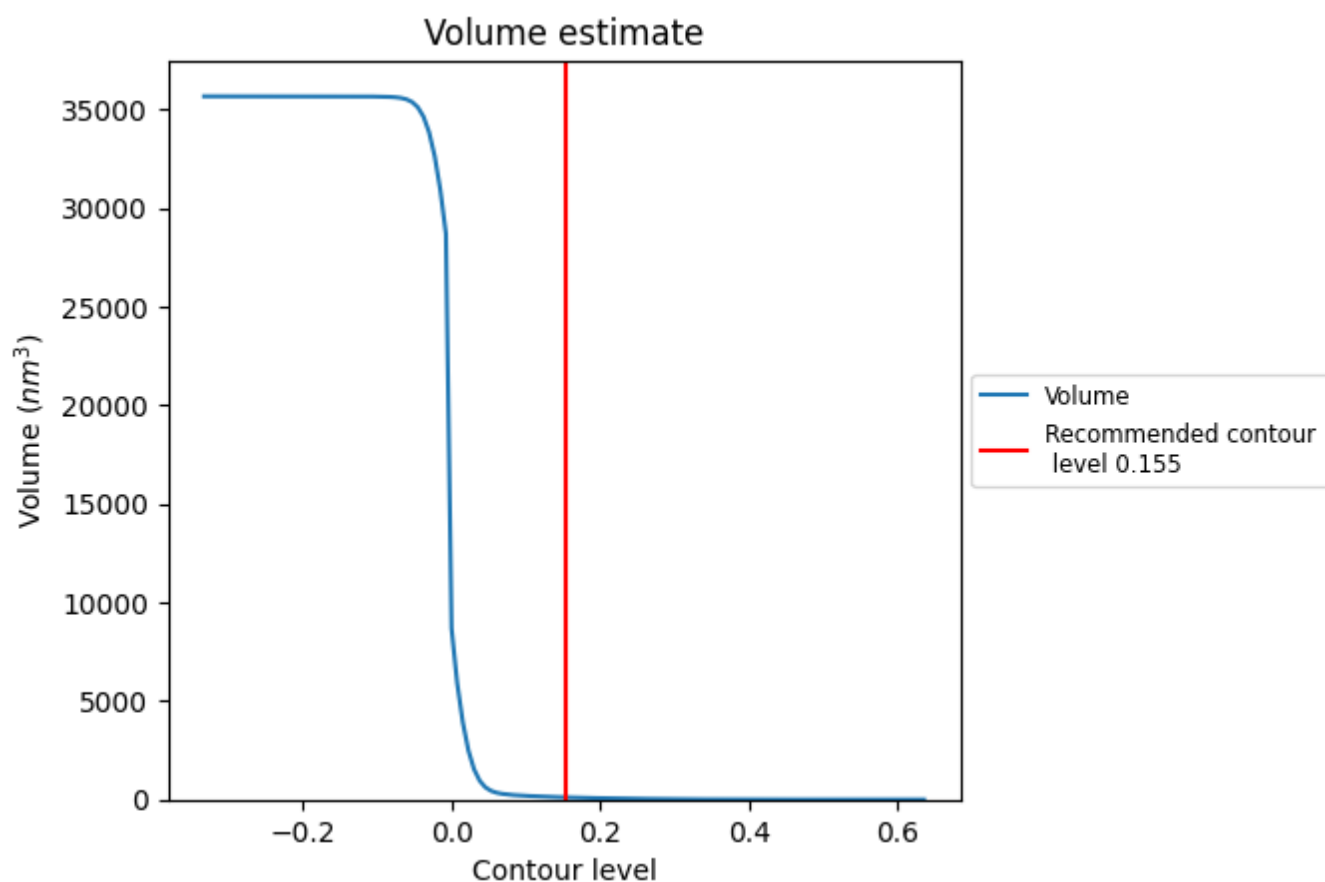
This section contains the results of statistical analysis of the map.

7.1 Map-value distribution [i](#)



The map-value distribution is plotted in 128 intervals along the x-axis. The y-axis is logarithmic. A spike in this graph at zero usually indicates that the volume has been masked.

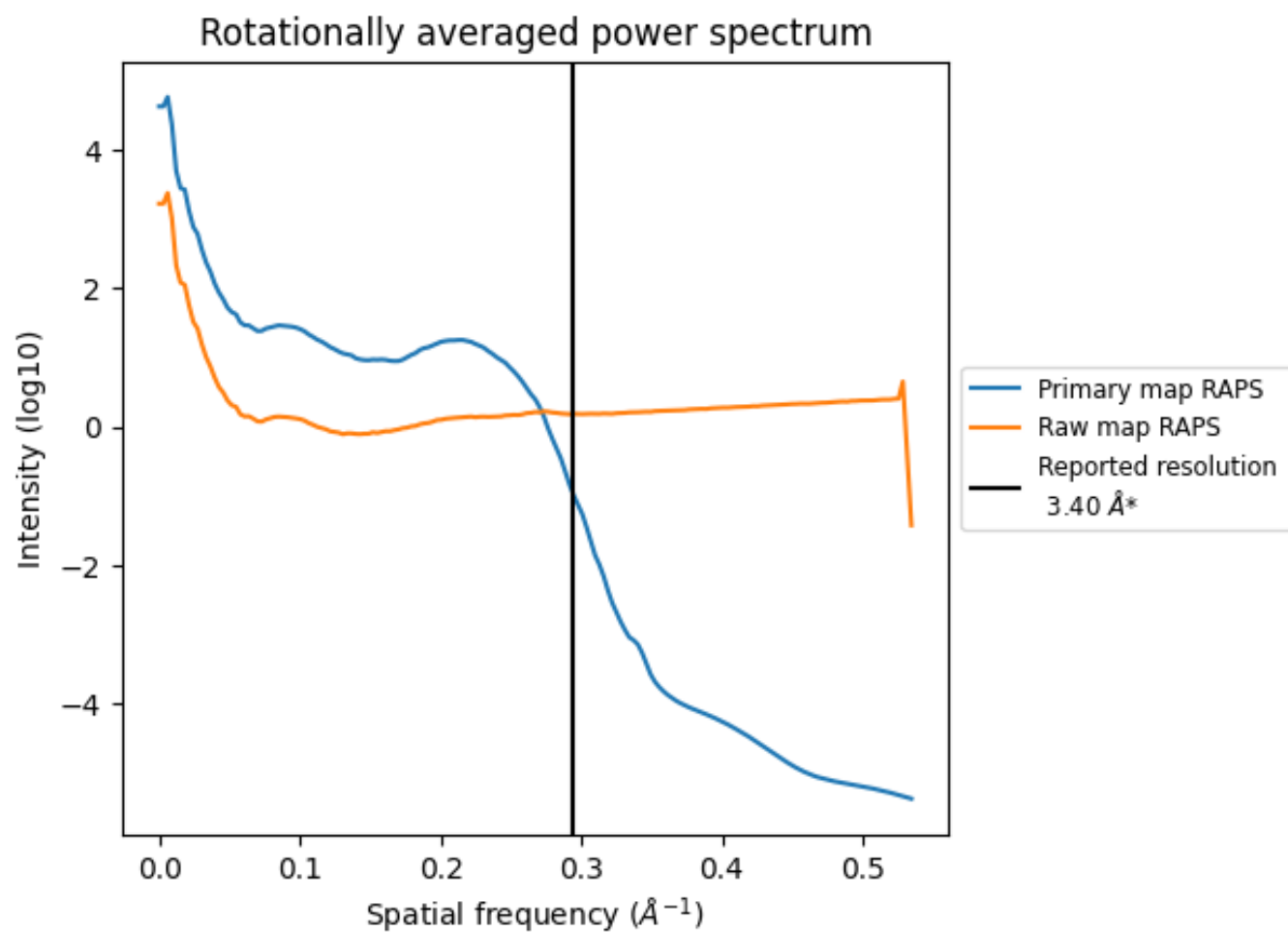
7.2 Volume estimate [i](#)



The volume at the recommended contour level is 110 nm³; this corresponds to an approximate mass of 99 kDa.

The volume estimate graph shows how the enclosed volume varies with the contour level. The recommended contour level is shown as a vertical line and the intersection between the line and the curve gives the volume of the enclosed surface at the given level.

7.3 Rotationally averaged power spectrum ⓘ

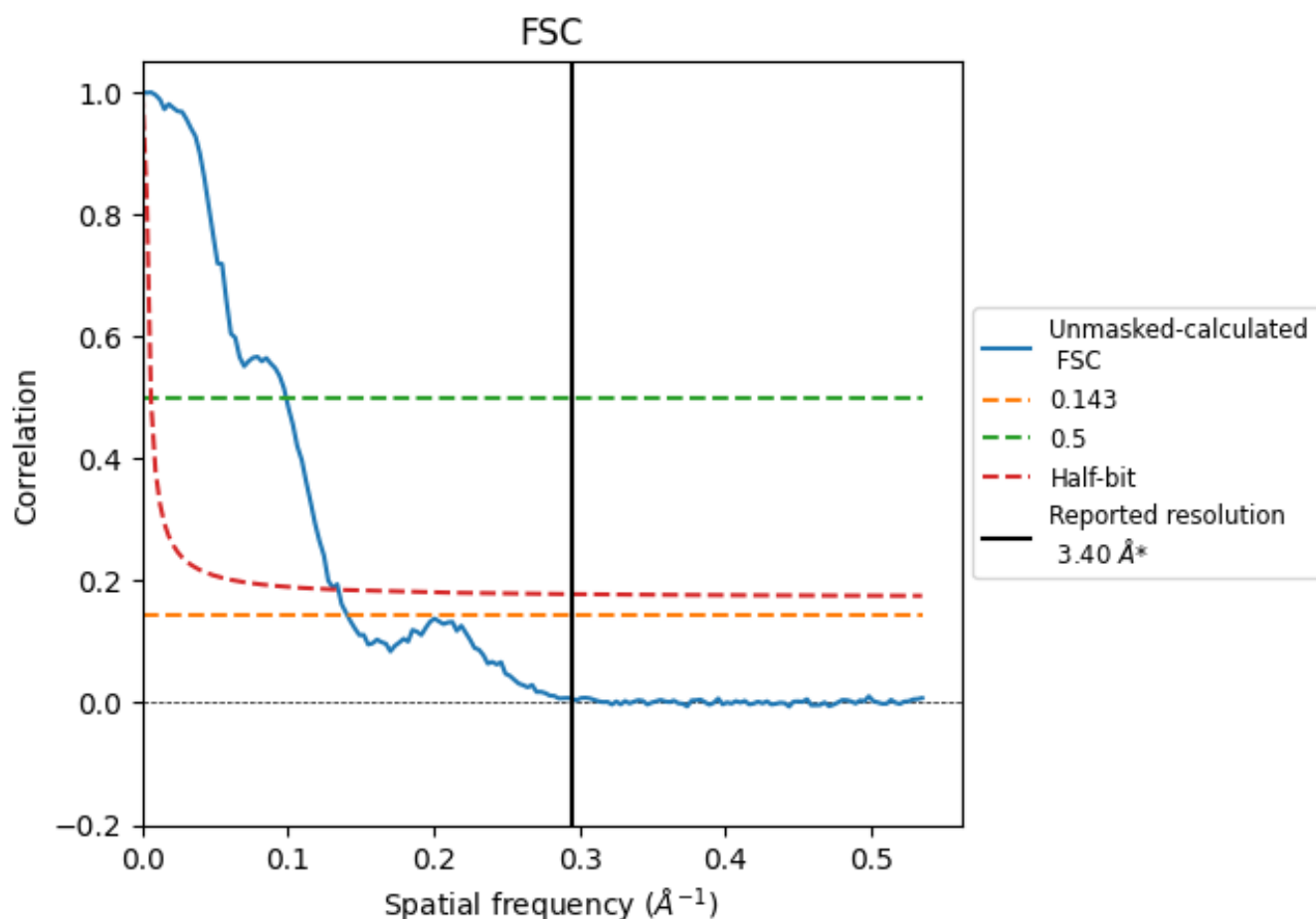


*Reported resolution corresponds to spatial frequency of 0.294 \AA^{-1}

8 Fourier-Shell correlation [i](#)

Fourier-Shell Correlation (FSC) is the most commonly used method to estimate the resolution of single-particle and subtomogram-averaged maps. The shape of the curve depends on the imposed symmetry, mask and whether or not the two 3D reconstructions used were processed from a common reference. The reported resolution is shown as a black line. A curve is displayed for the half-bit criterion in addition to lines showing the 0.143 gold standard cut-off and 0.5 cut-off.

8.1 FSC [i](#)



*Reported resolution corresponds to spatial frequency of 0.294 Å⁻¹

8.2 Resolution estimates [i](#)

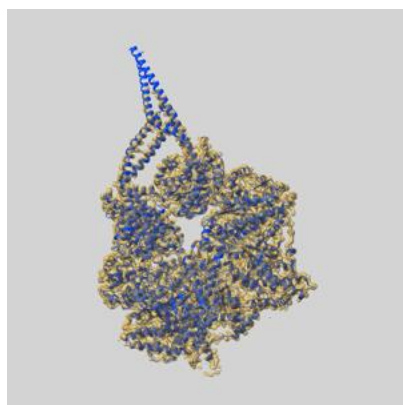
Resolution estimate (Å)	Estimation criterion (FSC cut-off)		
	0.143	0.5	Half-bit
Reported by author	3.40	-	-
Author-provided FSC curve	-	-	-
Unmasked-calculated*	7.11	10.14	7.43

*Resolution estimate based on FSC curve calculated by comparison of deposited half-maps. The value from deposited half-maps intersecting FSC 0.143 CUT-OFF 7.11 differs from the reported value 3.4 by more than 10 %

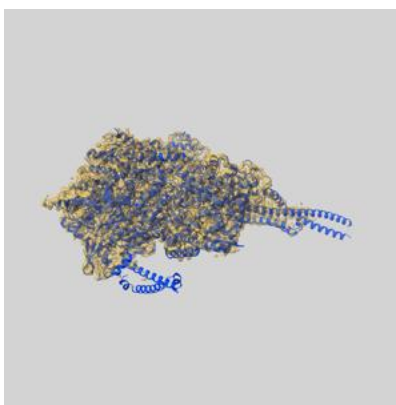
9 Map-model fit [i](#)

This section contains information regarding the fit between EMDB map EMD-47371 and PDB model 9E0U. Per-residue inclusion information can be found in [section 3](#) on [page 10](#).

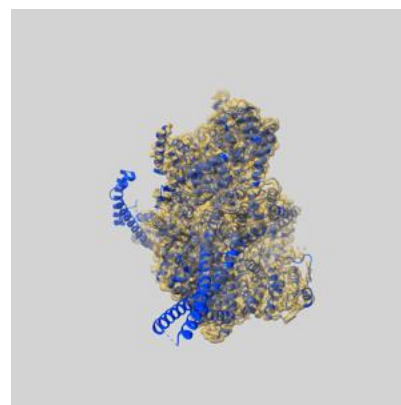
9.1 Map-model overlay [i](#)



X



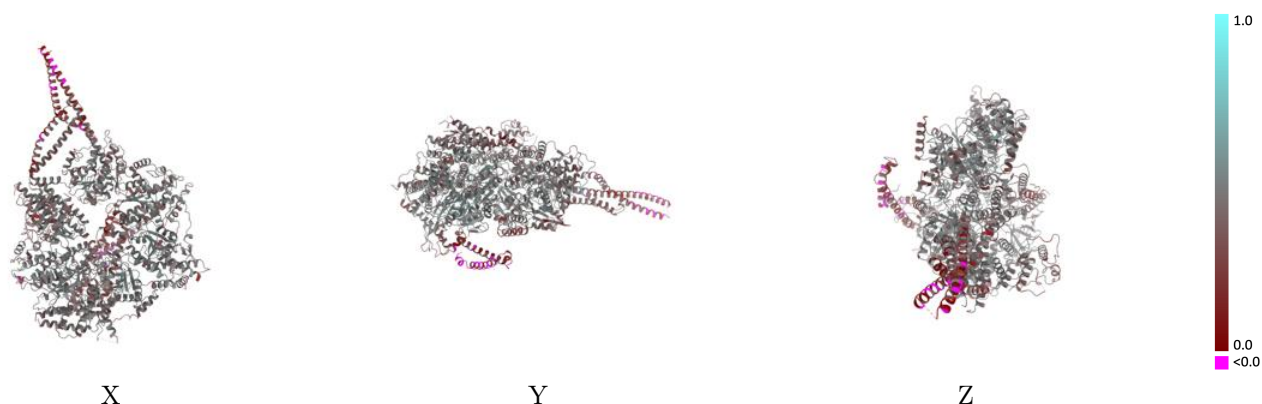
Y



Z

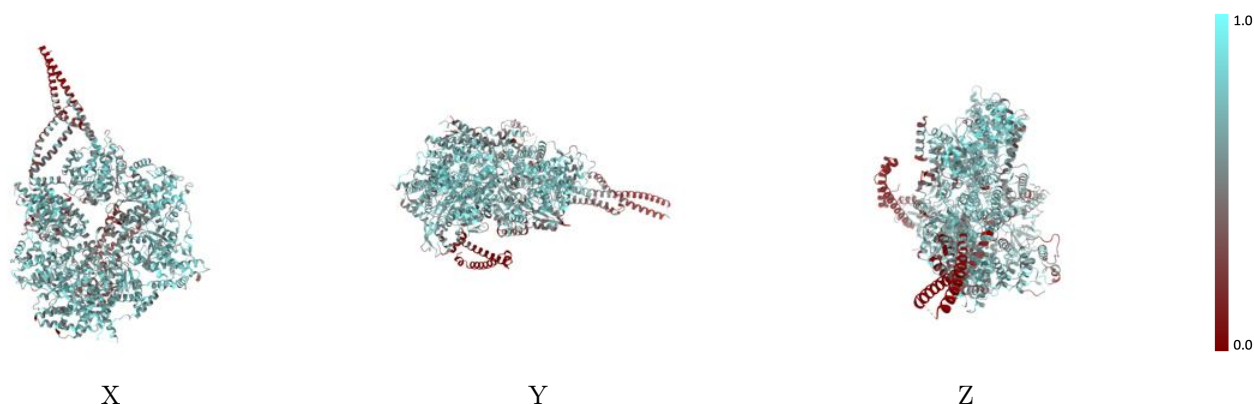
The images above show the 3D surface view of the map at the recommended contour level 0.155 at 50% transparency in yellow overlaid with a ribbon representation of the model coloured in blue. These images allow for the visual assessment of the quality of fit between the atomic model and the map.

9.2 Q-score mapped to coordinate model [i](#)



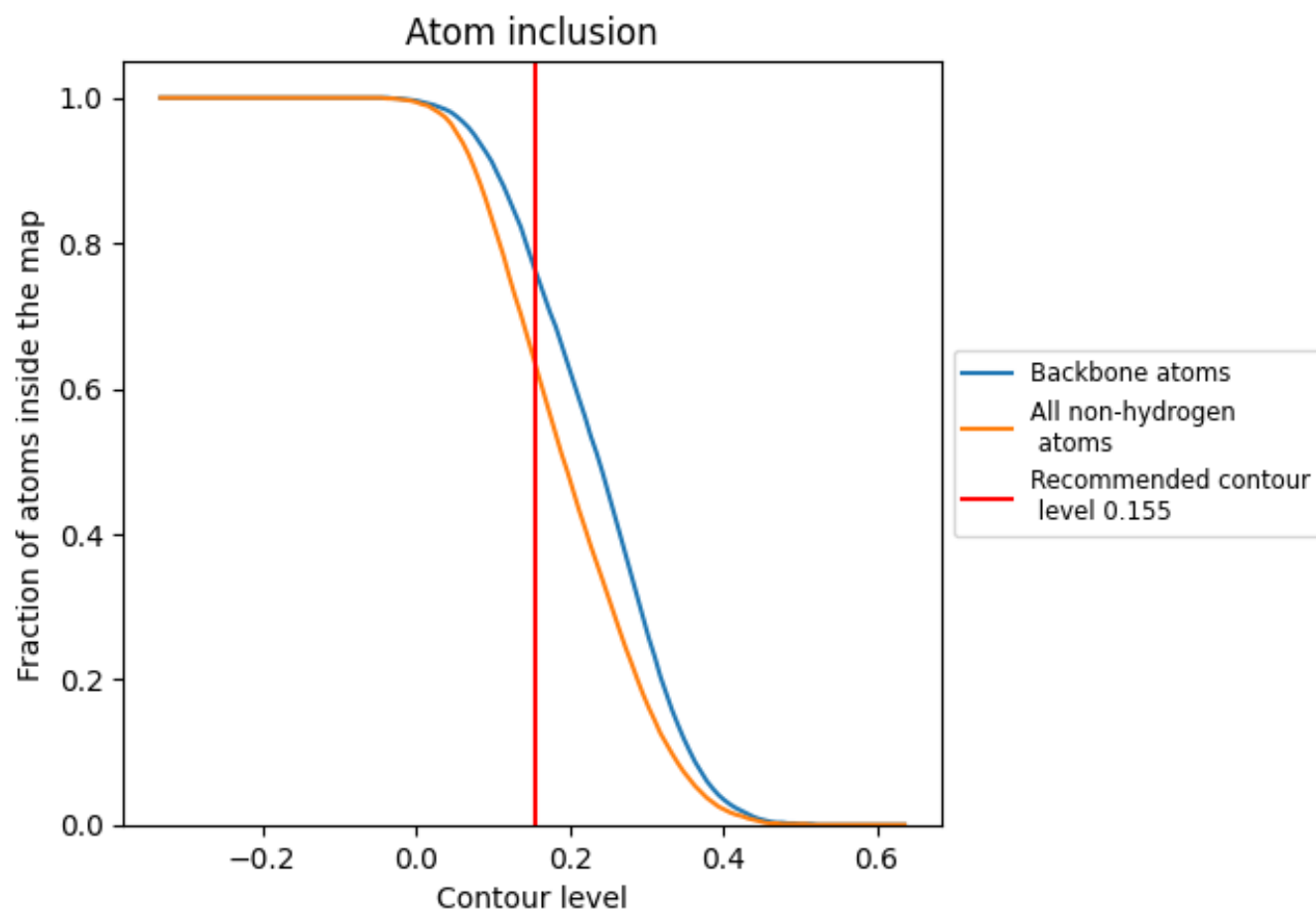
The images above show the model with each residue coloured according to its Q-score. This shows their resolvability in the map with higher Q-score values reflecting better resolvability. Please note: Q-score is calculating the resolvability of atoms, and thus high values are only expected at resolutions at which atoms can be resolved. Low Q-score values may therefore be expected for many entries.

9.3 Atom inclusion mapped to coordinate model [i](#)



The images above show the model with each residue coloured according to its atom inclusion. This shows to what extent they are inside the map at the recommended contour level (0.155).

9.4 Atom inclusion [i](#)



At the recommended contour level, 76% of all backbone atoms, 63% of all non-hydrogen atoms, are inside the map.

9.5 Map-model fit summary ⓘ

The table lists the average atom inclusion at the recommended contour level (0.155) and Q-score for the entire model and for each chain.

Chain	Atom inclusion	Q-score
All	<div></div> 0.6340	<div></div> 0.4300
A	<div></div> 0.6340	<div></div> 0.4300

