



Full wwPDB X-ray Structure Validation Report ⓘ

Apr 21, 2025 – 11:27 PM EDT

PDB ID : 6EC3 / pdb_00006ec3
Title : Crystal Structure of EvdMO1
Authors : McCulloch, K.M.; Iverson, T.M.; Starbird, C.A.; Perry, N.A.; Chen, Q.;
Berndt, S.; Yamakawa, I.; Loukachevitch, L.V.
Deposited on : 2018-08-07
Resolution : 3.35 Å(reported)

This is a Full wwPDB X-ray Structure Validation Report for a publicly released PDB entry.

We welcome your comments at validation@mail.wwpdb.org

A user guide is available at

<https://www.wwpdb.org/validation/2017/XrayValidationReportHelp>

with specific help available everywhere you see the ⓘ symbol.

The types of validation reports are described at

<http://www.wwpdb.org/validation/2017/FAQs#types>.

The following versions of software and data (see [references ⓘ](#)) were used in the production of this report:

MolProbity	:	4.02b-467
Mogul	:	2022.3.0, CSD as543be (2022)
Xtriage (Phenix)	:	2.0rc1
EDS	:	3.0
Percentile statistics	:	20231227.v01 (using entries in the PDB archive December 27th 2023)
CCP4	:	9.0.006 (Gargrove)
Density-Fitness	:	1.0.12
Ideal geometry (proteins)	:	Engh & Huber (2001)
Ideal geometry (DNA, RNA)	:	Parkinson et al. (1996)
Validation Pipeline (wwPDB-VP)	:	2.42

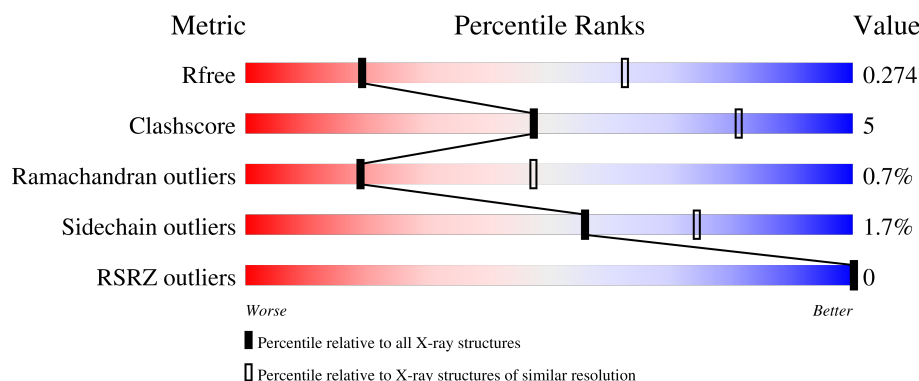
1 Overall quality at a glance

The following experimental techniques were used to determine the structure:

X-RAY DIFFRACTION




The reported resolution of this entry is 3.35 Å.

Percentile scores (ranging between 0-100) for global validation metrics of the entry are shown in the following graphic. The table shows the number of entries on which the scores are based.



Metric	Whole archive (#Entries)	Similar resolution (#Entries, resolution range(Å))
R_{free}	164625	1012 (3.40-3.32)
Clashscore	180529	1035 (3.40-3.32)
Ramachandran outliers	177936	1037 (3.40-3.32)
Sidechain outliers	177891	1037 (3.40-3.32)
RSRZ outliers	164620	1012 (3.40-3.32)

The table below summarises the geometric issues observed across the polymeric chains and their fit to the electron density. The red, orange, yellow and green segments of the lower bar indicate the fraction of residues that contain outliers for ≥ 3 , 2, 1 and 0 types of geometric quality criteria respectively. A grey segment represents the fraction of residues that are not modelled. The numeric value for each fraction is indicated below the corresponding segment, with a dot representing fractions $\leq 5\%$. The upper red bar (where present) indicates the fraction of residues that have poor fit to the electron density. The numeric value is given above the bar.

Mol	Chain	Length	Quality of chain
1	A	471	
1	B	471	
1	C	471	

2 Entry composition

There are 3 unique types of molecules in this entry. The entry contains 9743 atoms, of which 0 are hydrogens and 0 are deuteriums.

In the tables below, the ZeroOcc column contains the number of atoms modelled with zero occupancy, the AltConf column contains the number of residues with at least one atom in alternate conformation and the Trace column contains the number of residues modelled with at most 2 atoms.

- Molecule 1 is a protein called Methyltransferase domain-containing protein.

Mol	Chain	Residues	Atoms					ZeroOcc	AltConf	Trace
1	A	414	Total	C	N	O	S	0	0	0
			3227	2036	581	603	7			
1	B	413	Total	C	N	O	S	0	0	0
			3223	2031	583	602	7			
1	C	416	Total	C	N	O	S	0	0	0
			3248	2047	586	608	7			

There are 75 discrepancies between the modelled and reference sequences:

Chain	Residue	Modelled	Actual	Comment	Reference
A	-20	MET	-	expression tag	UNP A0A1C5AE13
A	-19	GLY	-	expression tag	UNP A0A1C5AE13
A	-18	SER	-	expression tag	UNP A0A1C5AE13
A	-17	SER	-	expression tag	UNP A0A1C5AE13
A	-16	HIS	-	expression tag	UNP A0A1C5AE13
A	-15	HIS	-	expression tag	UNP A0A1C5AE13
A	-14	HIS	-	expression tag	UNP A0A1C5AE13
A	-13	HIS	-	expression tag	UNP A0A1C5AE13
A	-12	HIS	-	expression tag	UNP A0A1C5AE13
A	-11	HIS	-	expression tag	UNP A0A1C5AE13
A	-10	SER	-	expression tag	UNP A0A1C5AE13
A	-9	SER	-	expression tag	UNP A0A1C5AE13
A	-8	GLY	-	expression tag	UNP A0A1C5AE13
A	-7	LEU	-	expression tag	UNP A0A1C5AE13
A	-6	VAL	-	expression tag	UNP A0A1C5AE13
A	-5	PRO	-	expression tag	UNP A0A1C5AE13
A	-4	ARG	-	expression tag	UNP A0A1C5AE13
A	-3	GLY	-	expression tag	UNP A0A1C5AE13
A	-2	SER	-	expression tag	UNP A0A1C5AE13
A	-1	HIS	-	expression tag	UNP A0A1C5AE13
A	0	MET	-	expression tag	UNP A0A1C5AE13
A	100	HIS	ASN	variant	UNP A0A1C5AE13
A	219	THR	LYS	variant	UNP A0A1C5AE13

Continued on next page...

Continued from previous page...

Chain	Residue	Modelled	Actual	Comment	Reference
A	232	ALA	THR	variant	UNP A0A1C5AE13
A	444	SER	ALA	variant	UNP A0A1C5AE13
B	-20	MET	-	expression tag	UNP A0A1C5AE13
B	-19	GLY	-	expression tag	UNP A0A1C5AE13
B	-18	SER	-	expression tag	UNP A0A1C5AE13
B	-17	SER	-	expression tag	UNP A0A1C5AE13
B	-16	HIS	-	expression tag	UNP A0A1C5AE13
B	-15	HIS	-	expression tag	UNP A0A1C5AE13
B	-14	HIS	-	expression tag	UNP A0A1C5AE13
B	-13	HIS	-	expression tag	UNP A0A1C5AE13
B	-12	HIS	-	expression tag	UNP A0A1C5AE13
B	-11	HIS	-	expression tag	UNP A0A1C5AE13
B	-10	SER	-	expression tag	UNP A0A1C5AE13
B	-9	SER	-	expression tag	UNP A0A1C5AE13
B	-8	GLY	-	expression tag	UNP A0A1C5AE13
B	-7	LEU	-	expression tag	UNP A0A1C5AE13
B	-6	VAL	-	expression tag	UNP A0A1C5AE13
B	-5	PRO	-	expression tag	UNP A0A1C5AE13
B	-4	ARG	-	expression tag	UNP A0A1C5AE13
B	-3	GLY	-	expression tag	UNP A0A1C5AE13
B	-2	SER	-	expression tag	UNP A0A1C5AE13
B	-1	HIS	-	expression tag	UNP A0A1C5AE13
B	0	MET	-	expression tag	UNP A0A1C5AE13
B	100	HIS	ASN	variant	UNP A0A1C5AE13
B	219	THR	LYS	variant	UNP A0A1C5AE13
B	232	ALA	THR	variant	UNP A0A1C5AE13
B	444	SER	ALA	variant	UNP A0A1C5AE13
C	-20	MET	-	expression tag	UNP A0A1C5AE13
C	-19	GLY	-	expression tag	UNP A0A1C5AE13
C	-18	SER	-	expression tag	UNP A0A1C5AE13
C	-17	SER	-	expression tag	UNP A0A1C5AE13
C	-16	HIS	-	expression tag	UNP A0A1C5AE13
C	-15	HIS	-	expression tag	UNP A0A1C5AE13
C	-14	HIS	-	expression tag	UNP A0A1C5AE13
C	-13	HIS	-	expression tag	UNP A0A1C5AE13
C	-12	HIS	-	expression tag	UNP A0A1C5AE13
C	-11	HIS	-	expression tag	UNP A0A1C5AE13
C	-10	SER	-	expression tag	UNP A0A1C5AE13
C	-9	SER	-	expression tag	UNP A0A1C5AE13
C	-8	GLY	-	expression tag	UNP A0A1C5AE13
C	-7	LEU	-	expression tag	UNP A0A1C5AE13
C	-6	VAL	-	expression tag	UNP A0A1C5AE13

Continued on next page...

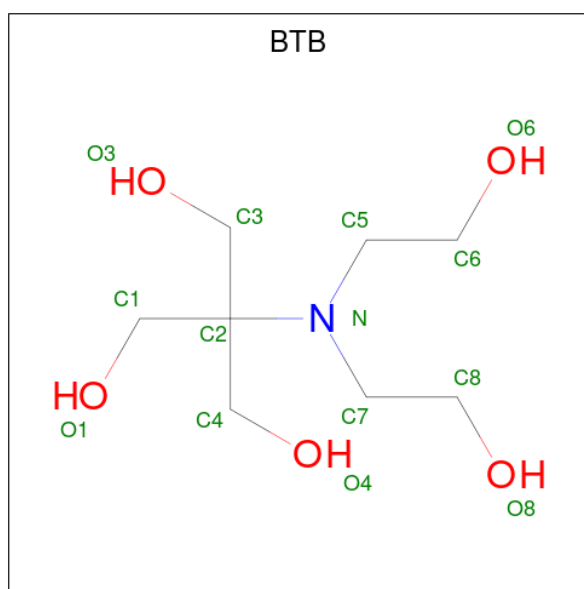
Continued from previous page...

Chain	Residue	Modelled	Actual	Comment	Reference
C	-5	PRO	-	expression tag	UNP A0A1C5AE13
C	-4	ARG	-	expression tag	UNP A0A1C5AE13
C	-3	GLY	-	expression tag	UNP A0A1C5AE13
C	-2	SER	-	expression tag	UNP A0A1C5AE13
C	-1	HIS	-	expression tag	UNP A0A1C5AE13
C	0	MET	-	expression tag	UNP A0A1C5AE13
C	100	HIS	ASN	variant	UNP A0A1C5AE13
C	219	THR	LYS	variant	UNP A0A1C5AE13
C	232	ALA	THR	variant	UNP A0A1C5AE13
C	444	SER	ALA	variant	UNP A0A1C5AE13

- Molecule 2 is NICKEL (II) ION (CCD ID: NI) (formula: Ni).

Mol	Chain	Residues	Atoms	ZeroOcc	AltConf
2	A	1	Total Ni 1 1	0	0
2	B	1	Total Ni 1 1	0	0
2	C	1	Total Ni 1 1	0	0

- Molecule 3 is 2-[BIS-(2-HYDROXY-ETHYL)-AMINO]-2-HYDROXYMETHYL-PROPAN E-1,3-DIOL (CCD ID: BTB) (formula: C₈H₁₉NO₅).

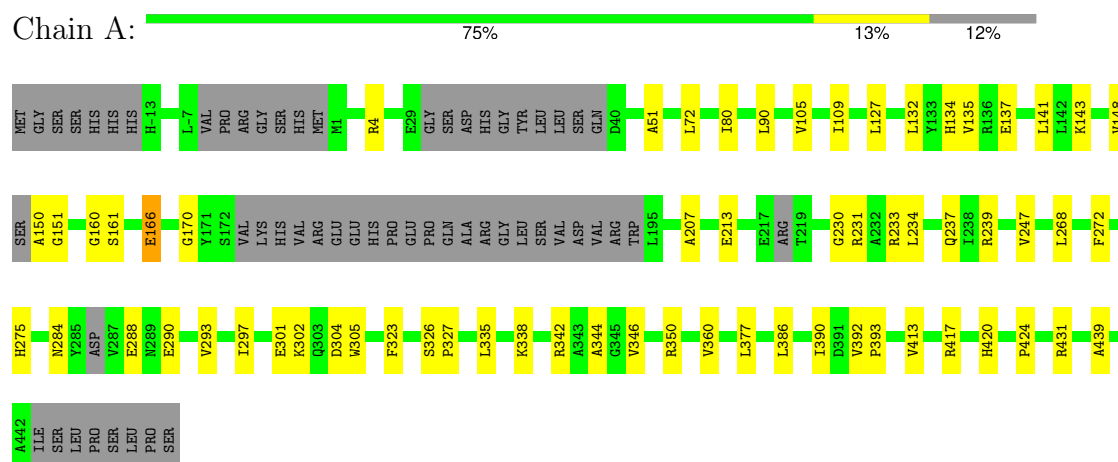


Mol	Chain	Residues	Atoms				ZeroOcc	AltConf
3	A	1	Total 14	C 8	N 1	O 5	0	0
3	B	1	Total 14	C 8	N 1	O 5	0	0
3	C	1	Total 14	C 8	N 1	O 5	0	0

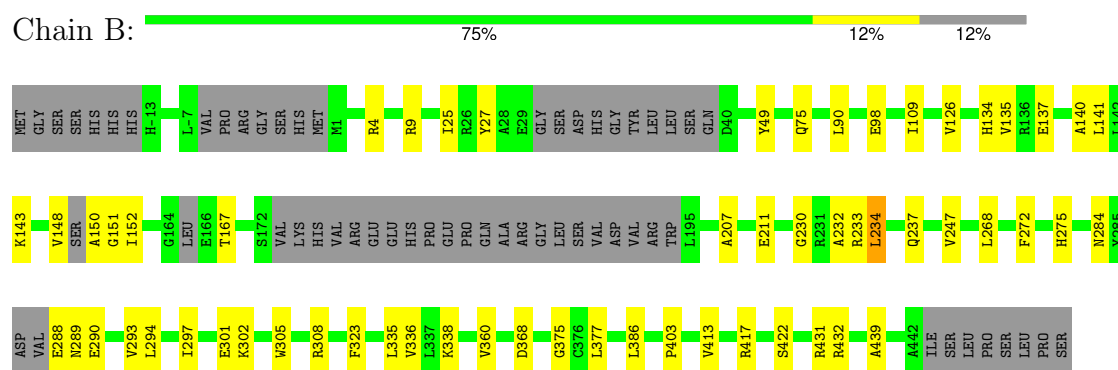
3 Residue-property plots

These plots are drawn for all protein, RNA, DNA and oligosaccharide chains in the entry. The first graphic for a chain summarises the proportions of the various outlier classes displayed in the second graphic. The second graphic shows the sequence view annotated by issues in geometry and electron density. Residues are color-coded according to the number of geometric quality criteria for which they contain at least one outlier: green = 0, yellow = 1, orange = 2 and red = 3 or more. A red dot above a residue indicates a poor fit to the electron density ($RSRZ > 2$). Stretches of 2 or more consecutive residues without any outlier are shown as a green connector. Residues present in the sample, but not in the model, are shown in grey.

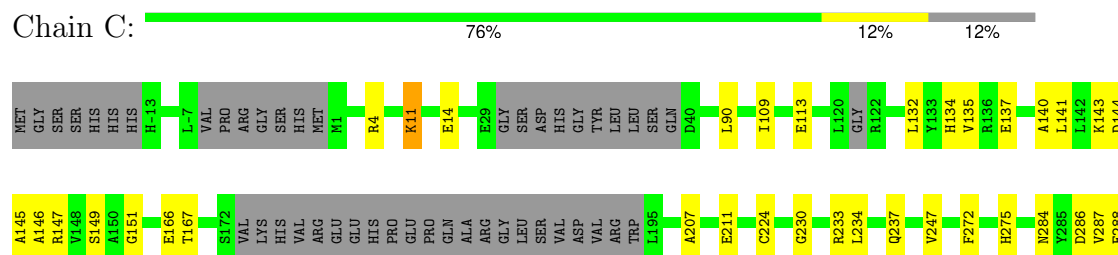
- Molecule 1: Methyltransferase domain-containing protein

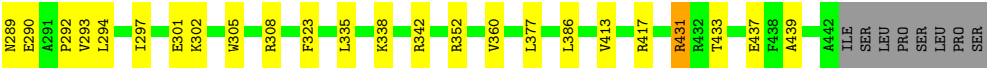


- Molecule 1: Methyltransferase domain-containing protein



- Molecule 1: Methyltransferase domain-containing protein





4 Data and refinement statistics

Property	Value	Source
Space group	I 41 2 2	Depositor
Cell constants a, b, c, α , β , γ	191.63Å 191.63Å 269.62Å 90.00° 90.00° 90.00°	Depositor
Resolution (Å)	45.64 – 3.35 45.64 – 3.35	Depositor EDS
% Data completeness (in resolution range)	95.9 (45.64-3.35) 94.8 (45.64-3.35)	Depositor EDS
R_{merge}	0.06	Depositor
R_{sym}	(Not available)	Depositor
$\langle I/\sigma(I) \rangle$ ¹	2.88 (at 3.32Å)	Xtriage
Refinement program	PHENIX	Depositor
R, R_{free}	0.221 , 0.266 0.227 , 0.274	Depositor DCC
R_{free} test set	1815 reflections (5.20%)	wwPDB-VP
Wilson B-factor (Å ²)	121.8	Xtriage
Anisotropy	0.024	Xtriage
Bulk solvent k_{sol} (e/Å ³), B_{sol} (Å ²)	0.35 , 162.6	EDS
L-test for twinning ²	$\langle L \rangle = 0.50$, $\langle L^2 \rangle = 0.34$	Xtriage
Estimated twinning fraction	0.377 for -1/2*h+1/2*k-1/2*l,1/2*h-1/2*k-1/2*l,-h-k 0.390 for -1/2*h-1/2*k+1/2*l,-1/2*h-1/2*k-1/2*l,h-k	Xtriage
F_o, F_c correlation	0.95	EDS
Total number of atoms	9743	wwPDB-VP
Average B, all atoms (Å ²)	140.0	wwPDB-VP

Xtriage's analysis on translational NCS is as follows: *The largest off-origin peak in the Patterson function is 2.72% of the height of the origin peak. No significant pseudotranslation is detected.*

¹Intensities estimated from amplitudes.

²Theoretical values of $\langle |L| \rangle$, $\langle L^2 \rangle$ for acentric reflections are 0.5, 0.333 respectively for untwinned datasets, and 0.375, 0.2 for perfectly twinned datasets.

5 Model quality [i](#)

5.1 Standard geometry [i](#)

Bond lengths and bond angles in the following residue types are not validated in this section: BTB, NI

The Z score for a bond length (or angle) is the number of standard deviations the observed value is removed from the expected value. A bond length (or angle) with $|Z| > 5$ is considered an outlier worth inspection. RMSZ is the root-mean-square of all Z scores of the bond lengths (or angles).

Mol	Chain	Bond lengths		Bond angles	
		RMSZ	# $ Z > 5$	RMSZ	# $ Z > 5$
1	A	0.24	0/3298	0.44	0/4480
1	B	0.25	0/3294	0.44	0/4473
1	C	0.24	0/3321	0.43	0/4514
All	All	0.24	0/9913	0.44	0/13467

There are no bond length outliers.

There are no bond angle outliers.

There are no chirality outliers.

There are no planarity outliers.

5.2 Too-close contacts [i](#)

In the following table, the Non-H and H(model) columns list the number of non-hydrogen atoms and hydrogen atoms in the chain respectively. The H(added) column lists the number of hydrogen atoms added and optimized by MolProbity. The Clashes column lists the number of clashes within the asymmetric unit, whereas Symm-Clashes lists symmetry-related clashes.

Mol	Chain	Non-H	H(model)	H(added)	Clashes	Symm-Clashes
1	A	3227	0	3137	36	0
1	B	3223	0	3130	38	0
1	C	3248	0	3158	32	0
2	A	1	0	0	0	0
2	B	1	0	0	0	0
2	C	1	0	0	0	0
3	A	14	0	19	5	0
3	B	14	0	19	3	0
3	C	14	0	19	2	0
All	All	9743	0	9482	105	0

The all-atom clashscore is defined as the number of clashes found per 1000 atoms (including hydrogen atoms). The all-atom clashscore for this structure is 5.

All (105) close contacts within the same asymmetric unit are listed below, sorted by their clash magnitude.

Atom-1	Atom-2	Interatomic distance (Å)	Clash overlap (Å)
1:C:338:LYS:HB2	1:C:431:ARG:HB3	1.66	0.77
1:A:338:LYS:HB2	1:A:431:ARG:HB3	1.68	0.75
1:B:375:GLY:O	1:B:431:ARG:NH2	2.24	0.70
1:A:51:ALA:O	1:A:231:ARG:NH2	2.23	0.69
1:A:377:LEU:HD13	3:A:501:BTB:H82	1.77	0.66
1:A:431:ARG:NH1	3:A:501:BTB:O4	2.32	0.62
1:C:143:LYS:HG2	1:C:207:ALA:HA	1.81	0.62
1:A:170:GLY:HA2	1:B:211:GLU:CD	2.20	0.61
1:B:284:ASN:HA	1:B:293:VAL:O	2.01	0.60
1:B:338:LYS:HG3	1:B:431:ARG:NH2	2.16	0.60
1:C:386:LEU:O	1:C:417:ARG:NH2	2.35	0.59
1:B:143:LYS:HG2	1:B:207:ALA:HA	1.83	0.59
1:A:213:GLU:OE2	1:A:231:ARG:NH1	2.36	0.58
1:A:420:HIS:HD2	3:A:501:BTB:H52	1.67	0.58
1:B:25:ILE:HB	1:B:27:TYR:HE1	1.68	0.57
1:A:237:GLN:HB3	1:A:247:VAL:HG11	1.86	0.57
1:A:284:ASN:HA	1:A:293:VAL:O	2.04	0.57
1:A:90:LEU:HD22	1:A:109:ILE:HB	1.87	0.56
1:C:377:LEU:HB2	3:C:501:BTB:H82	1.86	0.56
1:B:137:GLU:N	1:B:137:GLU:OE1	2.39	0.56
1:C:237:GLN:HB3	1:C:247:VAL:HG11	1.88	0.56
1:B:167:THR:HG21	1:C:211:GLU:HG3	1.87	0.55
1:C:137:GLU:N	1:C:137:GLU:OE1	2.40	0.55
1:C:90:LEU:HD22	1:C:109:ILE:HB	1.88	0.55
1:A:137:GLU:OE1	1:A:137:GLU:N	2.41	0.54
1:A:323:PHE:CE1	1:A:413:VAL:HG11	2.43	0.53
1:B:90:LEU:HD22	1:B:109:ILE:HB	1.89	0.53
1:A:386:LEU:O	1:A:417:ARG:NH2	2.41	0.53
1:C:352:ARG:NH1	1:C:437:GLU:OE2	2.38	0.53
1:B:377:LEU:O	1:B:403:PRO:HA	2.09	0.53
3:A:501:BTB:O4	3:A:501:BTB:O1	2.12	0.52
1:C:145:ALA:O	1:C:149:SER:HB3	2.09	0.52
1:B:237:GLN:HB3	1:B:247:VAL:HG11	1.91	0.52
1:C:294:LEU:HD21	1:C:297:ILE:HD11	1.90	0.52
1:A:166:GLU:N	1:A:166:GLU:OE1	2.42	0.52
1:A:301:GLU:OE2	1:A:302:LYS:NZ	2.42	0.52
1:B:301:GLU:OE2	1:B:302:LYS:NZ	2.42	0.52

Continued on next page...

Continued from previous page...

Atom-1	Atom-2	Interatomic distance (Å)	Clash overlap (Å)
1:B:135:VAL:HG21	1:B:141:LEU:HD22	1.92	0.52
1:B:386:LEU:O	1:B:417:ARG:NH2	2.38	0.51
1:A:326:SER:OG	1:A:327:PRO:HD3	2.11	0.51
1:C:132:LEU:HD12	1:C:141:LEU:HD23	1.93	0.51
1:C:377:LEU:HB2	3:C:501:BTB:C8	2.41	0.51
1:C:301:GLU:OE2	1:C:302:LYS:NZ	2.43	0.51
1:B:288:GLU:O	1:B:290:GLU:N	2.44	0.50
1:C:144:ASP:HA	1:C:147:ARG:HG3	1.92	0.50
1:A:346:VAL:HG21	3:A:501:BTB:H12	1.94	0.50
1:A:135:VAL:HG21	1:A:141:LEU:HD22	1.94	0.49
1:B:151:GLY:HA2	1:B:230:GLY:O	2.12	0.49
1:B:338:LYS:HB2	1:B:431:ARG:HB3	1.94	0.49
1:A:143:LYS:HG2	1:A:207:ALA:HA	1.95	0.49
1:C:288:GLU:O	1:C:290:GLU:N	2.45	0.49
1:C:233:ARG:O	1:C:234:LEU:HB3	2.14	0.48
1:A:233:ARG:O	1:A:234:LEU:HB3	2.13	0.48
1:B:294:LEU:HD21	1:B:297:ILE:HD11	1.95	0.48
1:C:11:LYS:HA	1:C:14:GLU:HG3	1.95	0.48
1:B:135:VAL:HG12	1:B:137:GLU:H	1.79	0.47
1:C:431:ARG:NH2	1:C:433:THR:OG1	2.47	0.47
1:A:148:VAL:O	1:A:150:ALA:N	2.48	0.47
1:C:151:GLY:HA2	1:C:230:GLY:O	2.14	0.47
1:C:293:VAL:HG12	1:C:342:ARG:CZ	2.45	0.47
1:C:135:VAL:HG21	1:C:141:LEU:HD22	1.96	0.47
1:B:305:TRP:HB2	1:B:308:ARG:HB3	1.97	0.46
1:B:336:VAL:HG21	3:B:501:BTB:H11	1.97	0.46
1:C:286:ASP:HB3	1:C:292:PRO:HB3	1.98	0.46
1:A:151:GLY:HA2	1:A:230:GLY:O	2.15	0.46
1:A:239:ARG:NH2	1:C:167:THR:O	2.48	0.46
1:A:350:ARG:HD2	1:A:390:ILE:HD11	1.97	0.46
1:A:360:VAL:HG13	1:A:439:ALA:HB2	1.99	0.45
1:C:305:TRP:HB2	1:C:308:ARG:HB3	1.98	0.45
1:C:290:GLU:HB3	1:C:342:ARG:HH11	1.81	0.45
1:B:9:ARG:NH1	1:B:98:GLU:OE1	2.48	0.44
1:B:375:GLY:O	1:B:422:SER:OG	2.32	0.44
1:A:268:LEU:HD11	1:A:305:TRP:HE1	1.82	0.44
1:B:49:TYR:CZ	1:B:75:GLN:HG3	2.53	0.44
1:B:268:LEU:HD11	1:B:305:TRP:HE1	1.83	0.44
1:C:284:ASN:HA	1:C:293:VAL:O	2.17	0.44
1:B:368:ASP:OD2	1:B:432:ARG:NH1	2.51	0.44
3:B:501:BTB:H71	3:B:501:BTB:H12	1.43	0.43

Continued on next page...

Continued from previous page...

Atom-1	Atom-2	Interatomic distance (Å)	Clash overlap (Å)
1:A:132:LEU:HD12	1:A:141:LEU:HD23	2.00	0.43
1:A:297:ILE:HB	1:A:335:LEU:HB3	1.99	0.43
1:B:148:VAL:O	1:B:150:ALA:N	2.51	0.43
1:C:146:ALA:HA	1:C:149:SER:OG	2.17	0.43
1:B:232:ALA:O	1:B:234:LEU:N	2.50	0.43
1:B:137:GLU:HG2	1:B:140:ALA:HB3	2.00	0.43
1:B:323:PHE:CE1	1:B:413:VAL:HG11	2.53	0.43
1:A:268:LEU:CD1	1:A:305:TRP:HE1	2.31	0.42
1:B:360:VAL:HG13	1:B:439:ALA:HB2	2.00	0.42
1:B:431:ARG:HH22	3:B:501:BTB:C4	2.33	0.42
1:A:135:VAL:HG12	1:A:137:GLU:H	1.85	0.42
1:C:297:ILE:HB	1:C:335:LEU:HB3	2.01	0.42
1:C:360:VAL:HG13	1:C:439:ALA:HB2	2.01	0.42
1:C:137:GLU:HG2	1:C:140:ALA:HB3	2.01	0.42
1:A:392:VAL:N	1:A:393:PRO:HD2	2.35	0.41
1:B:297:ILE:HB	1:B:335:LEU:HB3	2.02	0.41
1:A:72:LEU:HD11	1:A:127:LEU:HD22	2.03	0.41
1:A:290:GLU:OE1	1:A:342:ARG:HD3	2.20	0.41
1:A:344:ALA:HA	1:A:424:PRO:HB3	2.02	0.41
1:B:268:LEU:CD1	1:B:305:TRP:HE1	2.34	0.41
1:B:305:TRP:CB	1:B:308:ARG:HB3	2.50	0.41
1:C:323:PHE:CE1	1:C:413:VAL:HG11	2.56	0.41
1:A:80:ILE:HB	1:A:105:VAL:HG22	2.03	0.41
1:B:126:VAL:O	1:B:152:ILE:HA	2.20	0.41
1:B:237:GLN:O	1:B:247:VAL:HG21	2.21	0.41
1:B:338:LYS:HE3	1:B:431:ARG:NH2	2.36	0.41
1:A:288:GLU:O	1:A:290:GLU:N	2.54	0.41

There are no symmetry-related clashes.

5.3 Torsion angles [i](#)

5.3.1 Protein backbone [i](#)

In the following table, the Percentiles column shows the percent Ramachandran outliers of the chain as a percentile score with respect to all X-ray entries followed by that with respect to entries of similar resolution.

The Analysed column shows the number of residues for which the backbone conformation was analysed, and the total number of residues.

Mol	Chain	Analysed	Favoured	Allowed	Outliers	Percentiles	
1	A	400/471 (85%)	365 (91%)	32 (8%)	3 (1%)	16	44
1	B	399/471 (85%)	364 (91%)	32 (8%)	3 (1%)	16	44
1	C	406/471 (86%)	367 (90%)	36 (9%)	3 (1%)	19	47
All	All	1205/1413 (85%)	1096 (91%)	100 (8%)	9 (1%)	19	47

All (9) Ramachandran outliers are listed below:

Mol	Chain	Res	Type
1	B	234	LEU
1	A	160	GLY
1	B	233	ARG
1	C	166	GLU
1	A	161	SER
1	C	287	VAL
1	A	166	GLU
1	B	289	ASN
1	C	289	ASN

5.3.2 Protein sidechains ⓘ

In the following table, the Percentiles column shows the percent sidechain outliers of the chain as a percentile score with respect to all X-ray entries followed by that with respect to entries of similar resolution.

The Analysed column shows the number of residues for which the sidechain conformation was analysed, and the total number of residues.

Mol	Chain	Analysed	Rotameric	Outliers	Percentiles	
1	A	332/383 (87%)	327 (98%)	5 (2%)	60	76
1	B	331/383 (86%)	327 (99%)	4 (1%)	67	80
1	C	335/383 (88%)	327 (98%)	8 (2%)	44	67
All	All	998/1149 (87%)	981 (98%)	17 (2%)	56	74

All (17) residues with a non-rotameric sidechain are listed below:

Mol	Chain	Res	Type
1	A	4	ARG
1	A	134	HIS
1	A	272	PHE
1	A	275	HIS

Continued on next page...

Continued from previous page...

Mol	Chain	Res	Type
1	A	304	ASP
1	B	4	ARG
1	B	134	HIS
1	B	272	PHE
1	B	275	HIS
1	C	4	ARG
1	C	11	LYS
1	C	113	GLU
1	C	134	HIS
1	C	224	CYS
1	C	272	PHE
1	C	275	HIS
1	C	431	ARG

Sometimes sidechains can be flipped to improve hydrogen bonding and reduce clashes. There are no such sidechains identified.

5.3.3 RNA [i](#)

There are no RNA molecules in this entry.

5.4 Non-standard residues in protein, DNA, RNA chains [i](#)

There are no non-standard protein/DNA/RNA residues in this entry.

5.5 Carbohydrates [i](#)

There are no oligosaccharides in this entry.

5.6 Ligand geometry [i](#)

Of 6 ligands modelled in this entry, 3 are monoatomic - leaving 3 for Mogul analysis.

In the following table, the Counts columns list the number of bonds (or angles) for which Mogul statistics could be retrieved, the number of bonds (or angles) that are observed in the model and the number of bonds (or angles) that are defined in the Chemical Component Dictionary. The Link column lists molecule types, if any, to which the group is linked. The Z score for a bond length (or angle) is the number of standard deviations the observed value is removed from the expected value. A bond length (or angle) with $|Z| > 2$ is considered an outlier worth inspection. RMSZ is the root-mean-square of all Z scores of the bond lengths (or angles).

Mol	Type	Chain	Res	Link	Bond lengths			Bond angles		
					Counts	RMSZ	# Z > 2	Counts	RMSZ	# Z > 2
3	BTB	B	501	-	13,13,13	0.61	0	7,16,16	0.68	0
3	BTB	C	501	-	13,13,13	0.75	0	7,16,16	0.56	0
3	BTB	A	501	-	13,13,13	0.73	0	7,16,16	0.74	0

In the following table, the Chirals column lists the number of chiral outliers, the number of chiral centers analysed, the number of these observed in the model and the number defined in the Chemical Component Dictionary. Similar counts are reported in the Torsion and Rings columns. '-' means no outliers of that kind were identified.

Mol	Type	Chain	Res	Link	Chirals	Torsions	Rings
3	BTB	B	501	-	-	11/21/21/21	-
3	BTB	C	501	-	-	7/21/21/21	-
3	BTB	A	501	-	-	8/21/21/21	-

There are no bond length outliers.

There are no bond angle outliers.

There are no chirality outliers.

All (26) torsion outliers are listed below:

Mol	Chain	Res	Type	Atoms
3	A	501	BTB	C1-C2-C4-O4
3	A	501	BTB	C3-C2-C4-O4
3	A	501	BTB	N-C2-C4-O4
3	A	501	BTB	C6-C5-N-C7
3	B	501	BTB	C1-C2-C4-O4
3	B	501	BTB	C3-C2-C4-O4
3	B	501	BTB	N-C2-C4-O4
3	B	501	BTB	C1-C2-N-C5
3	B	501	BTB	C3-C2-N-C5
3	B	501	BTB	C4-C2-N-C5
3	B	501	BTB	C6-C5-N-C7
3	C	501	BTB	O1-C1-C2-C3
3	C	501	BTB	O1-C1-C2-C4
3	C	501	BTB	O1-C1-C2-N
3	C	501	BTB	C1-C2-C4-O4
3	C	501	BTB	C3-C2-C4-O4
3	C	501	BTB	N-C2-C4-O4
3	B	501	BTB	N-C5-C6-O6
3	A	501	BTB	O1-C1-C2-C3
3	A	501	BTB	O1-C1-C2-N

Continued on next page...

Continued from previous page...

Mol	Chain	Res	Type	Atoms
3	B	501	BTB	C1-C2-N-C7
3	B	501	BTB	C4-C2-N-C7
3	A	501	BTB	N-C5-C6-O6
3	C	501	BTB	N-C5-C6-O6
3	A	501	BTB	N-C7-C8-O8
3	B	501	BTB	C3-C2-N-C7

There are no ring outliers.

3 monomers are involved in 10 short contacts:

Mol	Chain	Res	Type	Clashes	Symm-Clashes
3	B	501	BTB	3	0
3	C	501	BTB	2	0
3	A	501	BTB	5	0

5.7 Other polymers [i](#)

There are no such residues in this entry.

5.8 Polymer linkage issues [i](#)

There are no chain breaks in this entry.

6 Fit of model and data [i](#)

6.1 Protein, DNA and RNA chains [i](#)

In the following table, the column labelled ‘#RSRZ> 2’ contains the number (and percentage) of RSRZ outliers, followed by percent RSRZ outliers for the chain as percentile scores relative to all X-ray entries and entries of similar resolution. The OWAB column contains the minimum, median, 95th percentile and maximum values of the occupancy-weighted average B-factor per residue. The column labelled ‘Q< 0.9’ lists the number of (and percentage) of residues with an average occupancy less than 0.9.

Mol	Chain	Analysed	<RSRZ>	#RSRZ>2	OWAB(Å ²)	Q<0.9
1	A	414/471 (87%)	-0.97	0 100 100	88, 135, 206, 247	0
1	B	413/471 (87%)	-1.00	0 100 100	96, 134, 200, 240	0
1	C	416/471 (88%)	-1.02	0 100 100	86, 132, 199, 262	0
All	All	1243/1413 (87%)	-1.00	0 100 100	86, 134, 201, 262	0

There are no RSRZ outliers to report.

6.2 Non-standard residues in protein, DNA, RNA chains [i](#)

There are no non-standard protein/DNA/RNA residues in this entry.

6.3 Carbohydrates [i](#)

There are no monosaccharides in this entry.

6.4 Ligands [i](#)

In the following table, the Atoms column lists the number of modelled atoms in the group and the number defined in the chemical component dictionary. The B-factors column lists the minimum, median, 95th percentile and maximum values of B factors of atoms in the group. The column labelled ‘Q< 0.9’ lists the number of atoms with occupancy less than 0.9.

Mol	Type	Chain	Res	Atoms	RSCC	RSR	B-factors(Å ²)	Q<0.9
3	BTB	A	501	14/14	0.99	0.07	178,189,199,204	0
3	BTB	B	501	14/14	0.99	0.08	157,167,179,182	0
3	BTB	C	501	14/14	0.99	0.08	151,159,172,173	0
2	NI	A	500	1/1	1.00	0.02	110,110,110,110	0
2	NI	B	500	1/1	1.00	0.02	105,105,105,105	0
2	NI	C	500	1/1	1.00	0.01	108,108,108,108	0

6.5 Other polymers [i](#)

There are no such residues in this entry.