



# wwPDB X-ray Structure Validation Summary Report ⓘ

Oct 12, 2024 – 11:47 AM EDT

PDB ID : 6ECU  
Title : SeMet substituted StiD O-MT residues 976-1266  
Authors : Skiba, M.A.; Bivins, M.M.; Smith, J.L.  
Deposited on : 2018-08-08  
Resolution : 1.96 Å(reported)

This is a wwPDB X-ray Structure Validation Summary Report for a publicly released PDB entry.

We welcome your comments at [validation@mail.wwpdb.org](mailto:validation@mail.wwpdb.org)

A user guide is available at

<https://www.wwpdb.org/validation/2017/XrayValidationReportHelp>

with specific help available everywhere you see the ⓘ symbol.

The types of validation reports are described at

<http://www.wwpdb.org/validation/2017/FAQs#types>.

---

The following versions of software and data (see [references ⓘ](#)) were used in the production of this report:

MolProbity	:	4.02b-467
Mogul	:	2022.3.0, CSD as543be (2022)
Xtriage (Phenix)	:	1.20.1
EDS	:	3.0
buster-report	:	1.1.7 (2018)
Percentile statistics	:	20231227.v01 (using entries in the PDB archive December 27th 2023)
CCP4	:	9.0.003 (Gargrove)
Density-Fitness	:	1.0.11
Ideal geometry (proteins)	:	Engh & Huber (2001)
Ideal geometry (DNA, RNA)	:	Parkinson et al. (1996)
Validation Pipeline (wwPDB-VP)	:	2.39

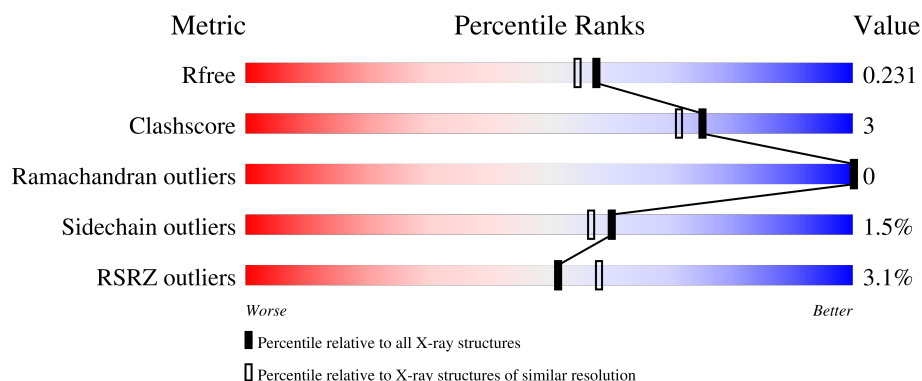
# 1 Overall quality at a glance

The following experimental techniques were used to determine the structure:

## *X-RAY DIFFRACTION*

The reported resolution of this entry is 1.96 Å.

Percentile scores (ranging between 0-100) for global validation metrics of the entry are shown in the following graphic. The table shows the number of entries on which the scores are based.



Metric	Whole archive (#Entries)	Similar resolution (#Entries, resolution range(Å))
$R_{free}$	164625	3187 (1.96-1.96)
Clashscore	180529	3412 (1.96-1.96)
Ramachandran outliers	177936	3390 (1.96-1.96)
Sidechain outliers	177891	3390 (1.96-1.96)
RSRZ outliers	164620	3186 (1.96-1.96)

The table below summarises the geometric issues observed across the polymeric chains and their fit to the electron density. The red, orange, yellow and green segments of the lower bar indicate the fraction of residues that contain outliers for  $\geq 3$ , 2, 1 and 0 types of geometric quality criteria respectively. A grey segment represents the fraction of residues that are not modelled. The numeric value for each fraction is indicated below the corresponding segment, with a dot representing fractions  $\leq 5\%$ . The upper red bar (where present) indicates the fraction of residues that have poor fit to the electron density. The numeric value is given above the bar.

Mol	Chain	Length	Quality of chain
1	A	316	
1	B	316	

## 2 Entry composition

There are 3 unique types of molecules in this entry. The entry contains 4629 atoms, of which 0 are hydrogens and 0 are deuteriums.

In the tables below, the ZeroOcc column contains the number of atoms modelled with zero occupancy, the AltConf column contains the number of residues with at least one atom in alternate conformation and the Trace column contains the number of residues modelled with at most 2 atoms.

- Molecule 1 is a protein called StiD protein.

Mol	Chain	Residues	Atoms						ZeroOcc	AltConf	Trace
1	A	275	Total	C	N	O	S	Se	0	3	0
			2220	1402	400	412	3	3			
1	B	279	Total	C	N	O	S	Se	0	2	0
			2241	1417	400	417	3	4			

There are 48 discrepancies between the modelled and reference sequences:

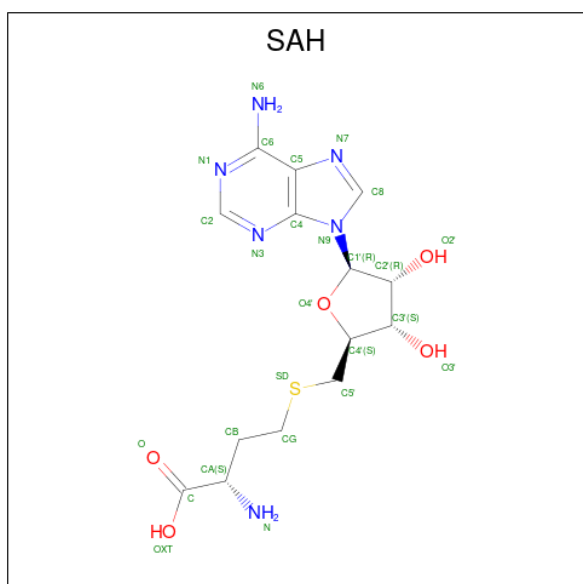
Chain	Residue	Modelled	Actual	Comment	Reference
A	952	MSE	-	initiating methionine	UNP Q8RJY3
A	953	HIS	-	expression tag	UNP Q8RJY3
A	954	HIS	-	expression tag	UNP Q8RJY3
A	955	HIS	-	expression tag	UNP Q8RJY3
A	956	HIS	-	expression tag	UNP Q8RJY3
A	957	HIS	-	expression tag	UNP Q8RJY3
A	958	HIS	-	expression tag	UNP Q8RJY3
A	959	SER	-	expression tag	UNP Q8RJY3
A	960	SER	-	expression tag	UNP Q8RJY3
A	961	GLY	-	expression tag	UNP Q8RJY3
A	962	VAL	-	expression tag	UNP Q8RJY3
A	963	ASP	-	expression tag	UNP Q8RJY3
A	964	LEU	-	expression tag	UNP Q8RJY3
A	965	GLY	-	expression tag	UNP Q8RJY3
A	966	THR	-	expression tag	UNP Q8RJY3
A	967	GLU	-	expression tag	UNP Q8RJY3
A	968	ASN	-	expression tag	UNP Q8RJY3
A	969	LEU	-	expression tag	UNP Q8RJY3
A	970	TYR	-	expression tag	UNP Q8RJY3
A	971	PHE	-	expression tag	UNP Q8RJY3
A	972	GLN	-	expression tag	UNP Q8RJY3
A	973	SER	-	expression tag	UNP Q8RJY3
A	974	ASN	-	expression tag	UNP Q8RJY3
A	975	ALA	-	expression tag	UNP Q8RJY3
B	952	MSE	-	initiating methionine	UNP Q8RJY3

*Continued on next page...*

Continued from previous page...

Chain	Residue	Modelled	Actual	Comment	Reference
B	953	HIS	-	expression tag	UNP Q8RJY3
B	954	HIS	-	expression tag	UNP Q8RJY3
B	955	HIS	-	expression tag	UNP Q8RJY3
B	956	HIS	-	expression tag	UNP Q8RJY3
B	957	HIS	-	expression tag	UNP Q8RJY3
B	958	HIS	-	expression tag	UNP Q8RJY3
B	959	SER	-	expression tag	UNP Q8RJY3
B	960	SER	-	expression tag	UNP Q8RJY3
B	961	GLY	-	expression tag	UNP Q8RJY3
B	962	VAL	-	expression tag	UNP Q8RJY3
B	963	ASP	-	expression tag	UNP Q8RJY3
B	964	LEU	-	expression tag	UNP Q8RJY3
B	965	GLY	-	expression tag	UNP Q8RJY3
B	966	THR	-	expression tag	UNP Q8RJY3
B	967	GLU	-	expression tag	UNP Q8RJY3
B	968	ASN	-	expression tag	UNP Q8RJY3
B	969	LEU	-	expression tag	UNP Q8RJY3
B	970	TYR	-	expression tag	UNP Q8RJY3
B	971	PHE	-	expression tag	UNP Q8RJY3
B	972	GLN	-	expression tag	UNP Q8RJY3
B	973	SER	-	expression tag	UNP Q8RJY3
B	974	ASN	-	expression tag	UNP Q8RJY3
B	975	ALA	-	expression tag	UNP Q8RJY3

- Molecule 2 is S-ADENOSYL-L-HOMOCYSTEINE (three-letter code: SAH) (formula:  $C_{14}H_{20}N_6O_5S$ ).



Mol	Chain	Residues	Atoms					ZeroOcc	AltConf
2	A	1	Total	C	N	O	S	0	0
			26	14	6	5	1		
2	B	1	Total	C	N	O	S	0	0
			26	14	6	5	1		

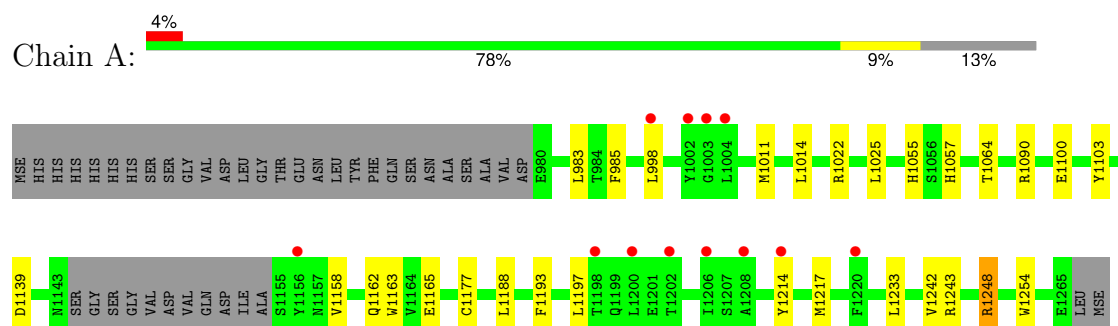
- Molecule 3 is water.

Mol	Chain	Residues	Atoms		ZeroOcc	AltConf
3	A	48	Total	O	0	0
			48	48		
3	B	68	Total	O	0	0
			68	68		

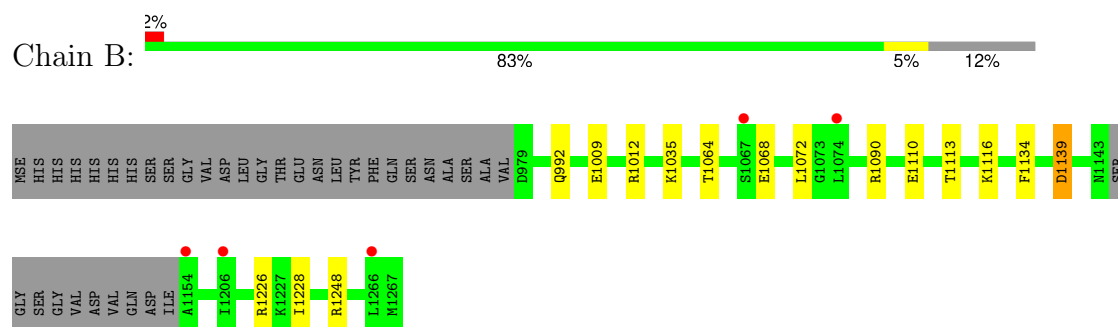
### 3 Residue-property plots [i](#)

These plots are drawn for all protein, RNA, DNA and oligosaccharide chains in the entry. The first graphic for a chain summarises the proportions of the various outlier classes displayed in the second graphic. The second graphic shows the sequence view annotated by issues in geometry and electron density. Residues are color-coded according to the number of geometric quality criteria for which they contain at least one outlier: green = 0, yellow = 1, orange = 2 and red = 3 or more. A red dot above a residue indicates a poor fit to the electron density ( $RSRZ > 2$ ). Stretches of 2 or more consecutive residues without any outlier are shown as a green connector. Residues present in the sample, but not in the model, are shown in grey.

#### • Molecule 1: StiD protein



#### • Molecule 1: StiD protein



## 4 Data and refinement statistics

Property	Value	Source
Space group	P 1	Depositor
Cell constants a, b, c, $\alpha$ , $\beta$ , $\gamma$	38.30Å 52.40Å 68.70Å 89.60° 88.30° 81.10°	Depositor
Resolution (Å)	41.29 – 1.96 41.29 – 1.96	Depositor EDS
% Data completeness (in resolution range)	94.3 (41.29-1.96) 86.8 (41.29-1.96)	Depositor EDS
$R_{merge}$	0.07	Depositor
$R_{sym}$	(Not available)	Depositor
$\langle I/\sigma(I) \rangle$ <sup>1</sup>	0.43 (at 1.97Å)	Xtriage
Refinement program	PHENIX 1.13_2998	Depositor
R, $R_{free}$	0.178 , 0.227 0.181 , 0.231	Depositor DCC
$R_{free}$ test set	34835 reflections (4.97%)	wwPDB-VP
Wilson B-factor (Å <sup>2</sup> )	32.9	Xtriage
Anisotropy	0.224	Xtriage
Bulk solvent $k_{sol}$ (e/Å <sup>3</sup> ), $B_{sol}$ (Å <sup>2</sup> )	0.36 , 52.9	EDS
L-test for twinning <sup>2</sup>	$\langle  L  \rangle = 0.48$ , $\langle L^2 \rangle = 0.32$	Xtriage
Estimated twinning fraction	0.017 for -h,-k,l	Xtriage
$F_o, F_c$ correlation	0.97	EDS
Total number of atoms	4629	wwPDB-VP
Average B, all atoms (Å <sup>2</sup> )	54.0	wwPDB-VP

Xtriage's analysis on translational NCS is as follows: *The largest off-origin peak in the Patterson function is 7.77% of the height of the origin peak. No significant pseudotranslation is detected.*

<sup>1</sup>Intensities estimated from amplitudes.

<sup>2</sup>Theoretical values of  $\langle |L| \rangle$ ,  $\langle L^2 \rangle$  for acentric reflections are 0.5, 0.333 respectively for untwinned datasets, and 0.375, 0.2 for perfectly twinned datasets.

## 5 Model quality

### 5.1 Standard geometry

Bond lengths and bond angles in the following residue types are not validated in this section: SAH

The Z score for a bond length (or angle) is the number of standard deviations the observed value is removed from the expected value. A bond length (or angle) with  $|Z| > 5$  is considered an outlier worth inspection. RMSZ is the root-mean-square of all Z scores of the bond lengths (or angles).

Mol	Chain	Bond lengths		Bond angles	
		RMSZ	$\# Z  > 5$	RMSZ	$\# Z  > 5$
1	A	0.26	0/2261	0.43	0/3046
1	B	0.25	0/2281	0.43	0/3071
All	All	0.26	0/4542	0.43	0/6117

There are no bond length outliers.

There are no bond angle outliers.

There are no chirality outliers.

There are no planarity outliers.

### 5.2 Too-close contacts

In the following table, the Non-H and H(model) columns list the number of non-hydrogen atoms and hydrogen atoms in the chain respectively. The H(added) column lists the number of hydrogen atoms added and optimized by MolProbity. The Clashes column lists the number of clashes within the asymmetric unit, whereas Symm-Clashes lists symmetry-related clashes.

Mol	Chain	Non-H	H(model)	H(added)	Clashes	Symm-Clashes
1	A	2220	0	2189	17	0
1	B	2241	0	2212	11	0
2	A	26	0	19	1	0
2	B	26	0	19	0	0
3	A	48	0	0	0	0
3	B	68	0	0	3	0
All	All	4629	0	4439	26	0

The all-atom clashscore is defined as the number of clashes found per 1000 atoms (including hydrogen atoms). The all-atom clashscore for this structure is 3.

The worst 5 of 26 close contacts within the same asymmetric unit are listed below, sorted by their

clash magnitude.

Atom-1	Atom-2	Interatomic distance (Å)	Clash overlap (Å)
1:B:1035:LYS:NZ	3:B:1402:HOH:O	2.32	0.63
1:A:1025:LEU:HD21	1:A:1233:LEU:HB3	1.82	0.61
1:B:992:GLN:NE2	3:B:1403:HOH:O	2.36	0.58
1:A:1177[B]:CYS:HB2	1:A:1254:TRP:HB3	1.85	0.57
1:B:1009:GLU:HG3	1:B:1012:ARG:HH21	1.73	0.54

There are no symmetry-related clashes.

## 5.3 Torsion angles [i](#)

### 5.3.1 Protein backbone [i](#)

In the following table, the Percentiles column shows the percent Ramachandran outliers of the chain as a percentile score with respect to all X-ray entries followed by that with respect to entries of similar resolution.

The Analysed column shows the number of residues for which the backbone conformation was analysed, and the total number of residues.

Mol	Chain	Analysed	Favoured	Allowed	Outliers	Percentiles	
1	A	274/316 (87%)	268 (98%)	6 (2%)	0	100	100
1	B	277/316 (88%)	270 (98%)	7 (2%)	0	100	100
All	All	551/632 (87%)	538 (98%)	13 (2%)	0	100	100

There are no Ramachandran outliers to report.

### 5.3.2 Protein sidechains [i](#)

In the following table, the Percentiles column shows the percent sidechain outliers of the chain as a percentile score with respect to all X-ray entries followed by that with respect to entries of similar resolution.

The Analysed column shows the number of residues for which the sidechain conformation was analysed, and the total number of residues.

Mol	Chain	Analysed	Rotameric	Outliers	Percentiles	
1	A	237/263 (90%)	233 (98%)	4 (2%)	56	52
1	B	239/263 (91%)	236 (99%)	3 (1%)	65	62

*Continued on next page...*

*Continued from previous page...*

Mol	Chain	Analysed	Rotameric	Outliers	Percentiles
All	All	476/526 (90%)	469 (98%)	7 (2%)	60 57

5 of 7 residues with a non-rotameric sidechain are listed below:

Mol	Chain	Res	Type
1	A	1248	ARG
1	B	1110	GLU
1	B	1139	ASP
1	B	1116	LYS
1	A	1243	ARG

Sometimes sidechains can be flipped to improve hydrogen bonding and reduce clashes. There are no such sidechains identified.

### 5.3.3 RNA [i](#)

There are no RNA molecules in this entry.

## 5.4 Non-standard residues in protein, DNA, RNA chains [i](#)

There are no non-standard protein/DNA/RNA residues in this entry.

## 5.5 Carbohydrates [i](#)

There are no oligosaccharides in this entry.

## 5.6 Ligand geometry [i](#)

2 ligands are modelled in this entry.

In the following table, the Counts columns list the number of bonds (or angles) for which Mogul statistics could be retrieved, the number of bonds (or angles) that are observed in the model and the number of bonds (or angles) that are defined in the Chemical Component Dictionary. The Link column lists molecule types, if any, to which the group is linked. The Z score for a bond length (or angle) is the number of standard deviations the observed value is removed from the expected value. A bond length (or angle) with  $|Z| > 2$  is considered an outlier worth inspection. RMSZ is the root-mean-square of all Z scores of the bond lengths (or angles).

Mol	Type	Chain	Res	Link	Bond lengths			Bond angles		
					Counts	RMSZ	# Z  > 2	Counts	RMSZ	# Z  > 2
2	SAH	B	1300	-	23,28,28	1.27	3 (13%)	22,40,40	2.03	4 (18%)
2	SAH	A	1300	-	23,28,28	1.24	3 (13%)	22,40,40	1.83	3 (13%)

In the following table, the Chirals column lists the number of chiral outliers, the number of chiral centers analysed, the number of these observed in the model and the number defined in the Chemical Component Dictionary. Similar counts are reported in the Torsion and Rings columns. '-' means no outliers of that kind were identified.

Mol	Type	Chain	Res	Link	Chirals	Torsions	Rings
2	SAH	B	1300	-	-	2/11/31/31	0/3/3/3
2	SAH	A	1300	-	-	5/11/31/31	0/3/3/3

The worst 5 of 6 bond length outliers are listed below:

Mol	Chain	Res	Type	Atoms	Z	Observed(Å)	Ideal(Å)
2	B	1300	SAH	C2-N3	4.12	1.38	1.32
2	A	1300	SAH	C2-N3	3.92	1.38	1.32
2	B	1300	SAH	C2-N1	2.61	1.38	1.33
2	A	1300	SAH	C2-N1	2.55	1.38	1.33
2	A	1300	SAH	OXT-C	-2.25	1.23	1.30

The worst 5 of 7 bond angle outliers are listed below:

Mol	Chain	Res	Type	Atoms	Z	Observed(°)	Ideal(°)
2	B	1300	SAH	N3-C2-N1	-6.71	119.57	128.67
2	A	1300	SAH	N3-C2-N1	-6.52	119.82	128.67
2	A	1300	SAH	C5'-SD-CG	-3.62	91.53	102.26
2	B	1300	SAH	O4'-C1'-N9	3.48	113.36	108.75
2	B	1300	SAH	C5'-SD-CG	-2.88	93.71	102.26

There are no chirality outliers.

5 of 7 torsion outliers are listed below:

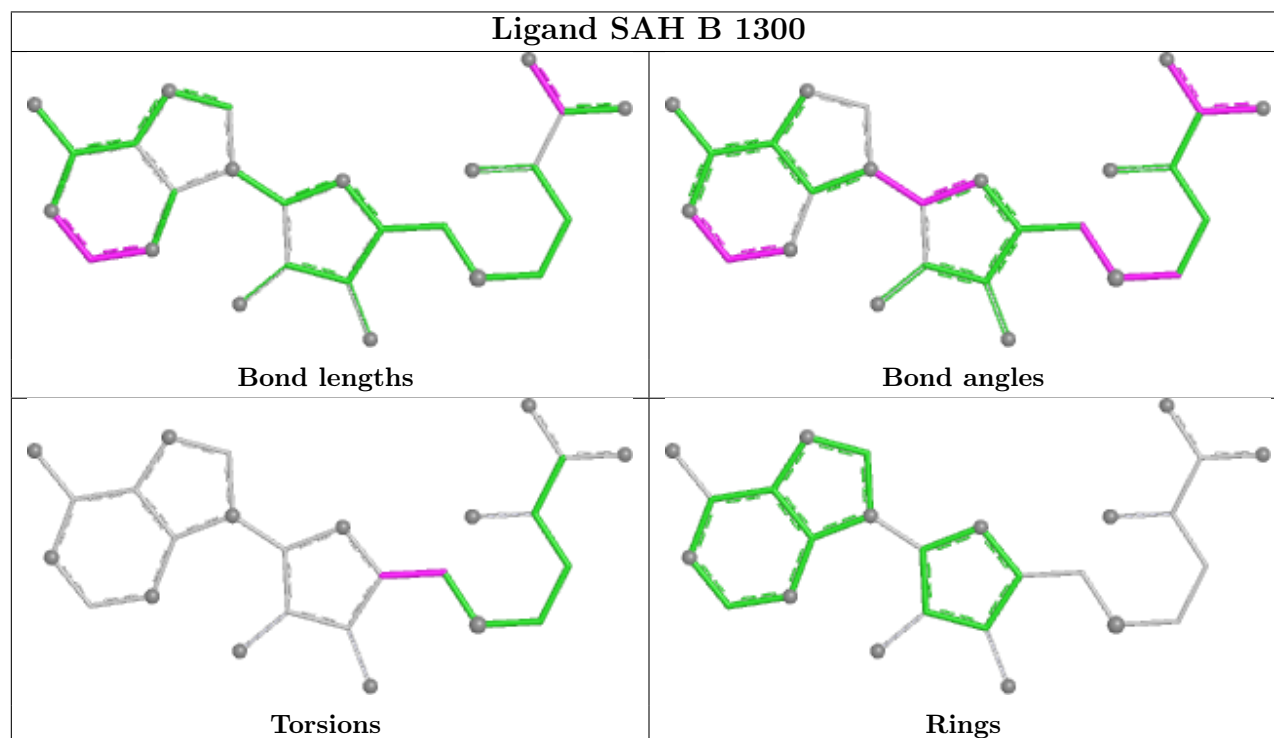
Mol	Chain	Res	Type	Atoms
2	A	1300	SAH	C-CA-CB-CG
2	B	1300	SAH	O4'-C4'-C5'-SD
2	A	1300	SAH	N-CA-CB-CG
2	B	1300	SAH	C3'-C4'-C5'-SD
2	A	1300	SAH	O-C-CA-CB

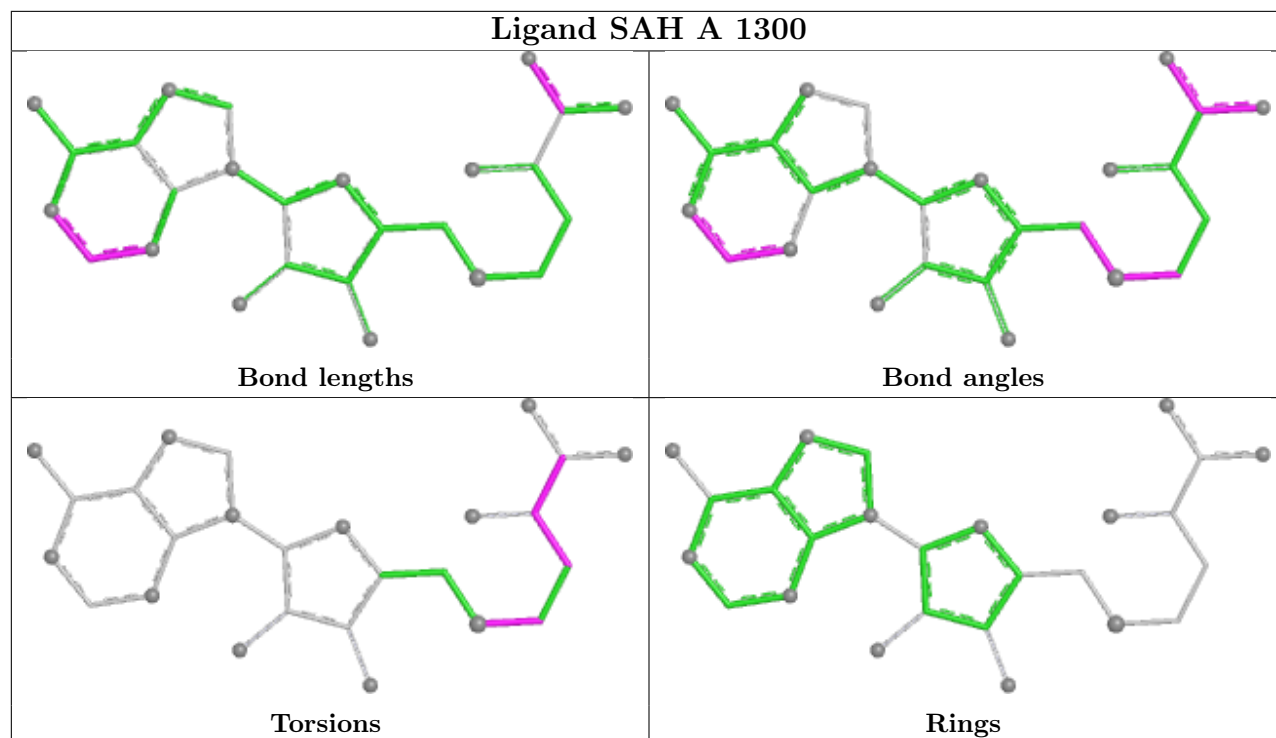
There are no ring outliers.

1 monomer is involved in 1 short contact:

Mol	Chain	Res	Type	Clashes	Symm-Clashes
2	A	1300	SAH	1	0

The following is a two-dimensional graphical depiction of Mogul quality analysis of bond lengths, bond angles, torsion angles, and ring geometry for all instances of the Ligand of Interest. In addition, ligands with molecular weight > 250 and outliers as shown on the validation Tables will also be included. For torsion angles, if less than 5% of the Mogul distribution of torsion angles is within 10 degrees of the torsion angle in question, then that torsion angle is considered an outlier. Any bond that is central to one or more torsion angles identified as an outlier by Mogul will be highlighted in the graph. For rings, the root-mean-square deviation (RMSD) between the ring in question and similar rings identified by Mogul is calculated over all ring torsion angles. If the average RMSD is greater than 60 degrees and the minimal RMSD between the ring in question and any Mogul-identified rings is also greater than 60 degrees, then that ring is considered an outlier. The outliers are highlighted in purple. The color gray indicates Mogul did not find sufficient equivalents in the CSD to analyse the geometry.





## 5.7 Other polymers [i](#)

There are no such residues in this entry.

## 5.8 Polymer linkage issues [i](#)

There are no chain breaks in this entry.

## 6 Fit of model and data [i](#)

### 6.1 Protein, DNA and RNA chains [i](#)

In the following table, the column labelled ‘#RSRZ> 2’ contains the number (and percentage) of RSRZ outliers, followed by percent RSRZ outliers for the chain as percentile scores relative to all X-ray entries and entries of similar resolution. The OWAB column contains the minimum, median, 95<sup>th</sup> percentile and maximum values of the occupancy-weighted average B-factor per residue. The column labelled ‘Q< 0.9’ lists the number of (and percentage) of residues with an average occupancy less than 0.9.

Mol	Chain	Analysed	<RSRZ>	#RSRZ>2	OWAB(Å <sup>2</sup> )	Q<0.9
1	A	272/316 (86%)	0.36	12 (4%) 39 46	17, 52, 96, 123	3 (1%)
1	B	275/316 (87%)	0.21	5 (1%) 67 73	16, 50, 86, 103	2 (0%)
All	All	547/632 (86%)	0.28	17 (3%) 51 58	16, 51, 90, 123	5 (0%)

The worst 5 of 17 RSRZ outliers are listed below:

Mol	Chain	Res	Type	RSRZ
1	A	1200	LEU	4.5
1	A	1156	TYR	3.2
1	A	1206	ILE	3.0
1	A	1004	LEU	2.9
1	B	1154	ALA	2.9

### 6.2 Non-standard residues in protein, DNA, RNA chains [i](#)

There are no non-standard protein/DNA/RNA residues in this entry.

### 6.3 Carbohydrates [i](#)

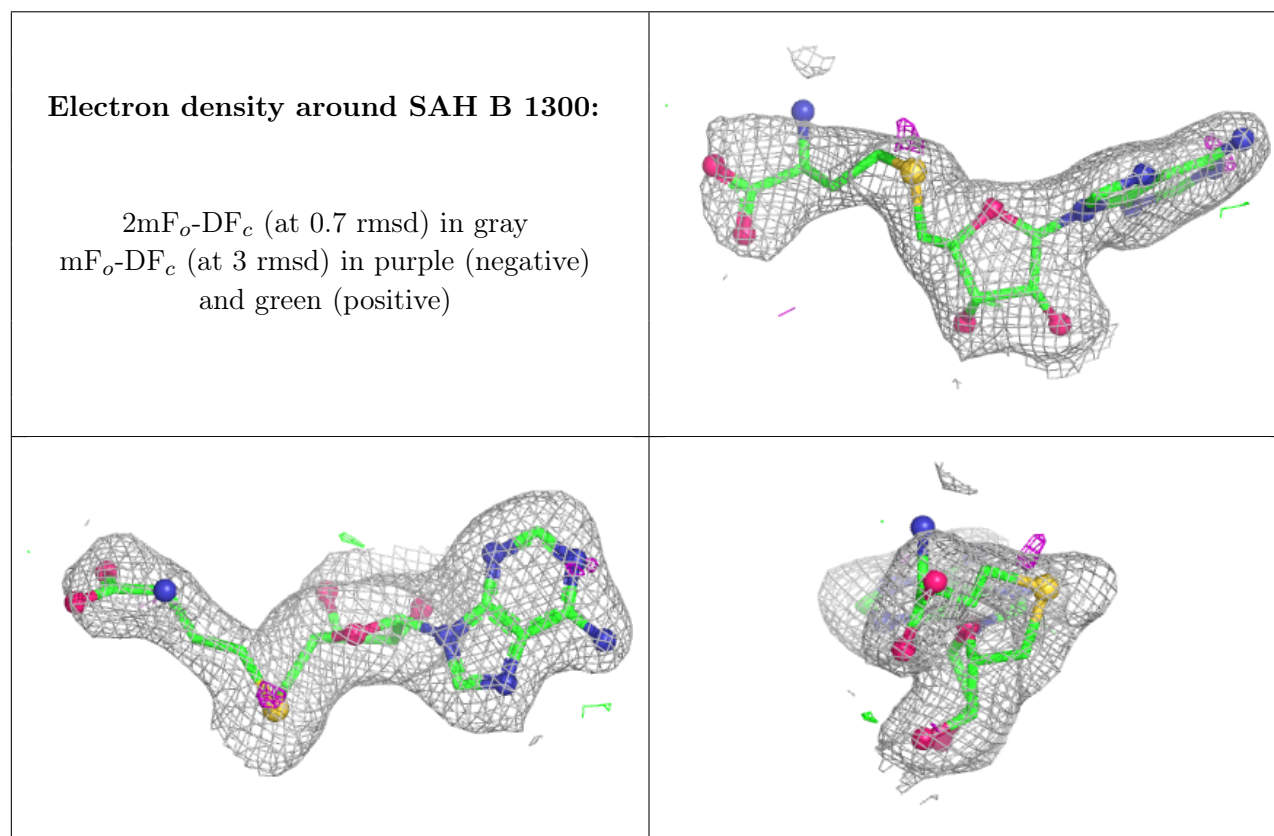
There are no monosaccharides in this entry.

### 6.4 Ligands [i](#)

In the following table, the Atoms column lists the number of modelled atoms in the group and the number defined in the chemical component dictionary. The B-factors column lists the minimum, median, 95<sup>th</sup> percentile and maximum values of B factors of atoms in the group. The column labelled ‘Q< 0.9’ lists the number of atoms with occupancy less than 0.9.

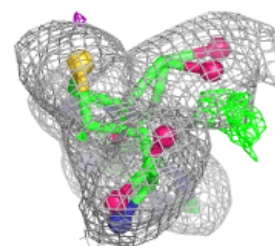
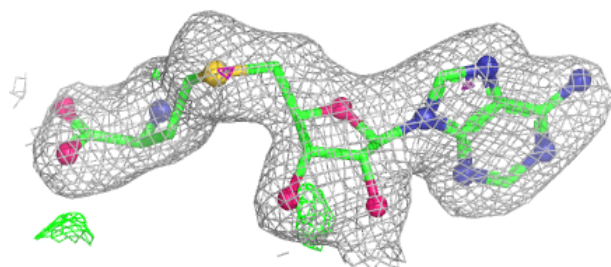
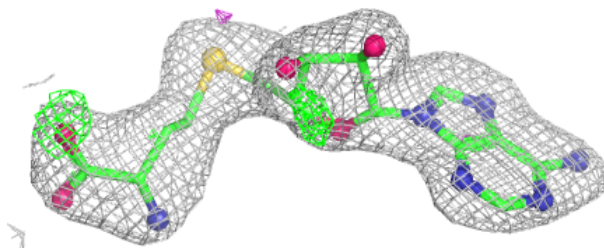
Mol	Type	Chain	Res	Atoms	RSCC	RSR	B-factors( $\text{\AA}^2$ )	Q<0.9
2	SAH	B	1300	26/26	0.91	0.10	35,50,88,90	0
2	SAH	A	1300	26/26	0.92	0.09	40,52,63,66	0

The following is a graphical depiction of the model fit to experimental electron density of all instances of the Ligand of Interest. In addition, ligands with molecular weight > 250 and outliers as shown on the geometry validation Tables will also be included. Each fit is shown from different orientation to approximate a three-dimensional view.



**Electron density around SAH A 1300:**

$2mF_o-DF_c$  (at 0.7 rmsd) in gray  
 $mF_o-DF_c$  (at 3 rmsd) in purple (negative)  
and green (positive)



## 6.5 Other polymers [i](#)

There are no such residues in this entry.