



wwPDB X-ray Structure Validation Summary Report ⓘ

Nov 25, 2024 – 04:04 PM EST

PDB ID : 2F06
Title : Crystal structure of protein BT0572 from Bacteroides thetaiotaomicron
Authors : Chang, C.; Volkart, L.; Collart, F.; Joachimiak, A.; Midwest Center for Structural Genomics (MCSG)
Deposited on : 2005-11-11
Resolution : 2.10 Å(reported)

This is a wwPDB X-ray Structure Validation Summary Report for a publicly released PDB entry.

We welcome your comments at validation@mail.wwpdb.org

A user guide is available at

<https://www.wwpdb.org/validation/2017/XrayValidationReportHelp>

with specific help available everywhere you see the ⓘ symbol.

The types of validation reports are described at

<http://www.wwpdb.org/validation/2017/FAQs#types>.

The following versions of software and data (see [references ⓘ](#)) were used in the production of this report:

MolProbity	:	4.02b-467
Mogul	:	2022.3.0, CSD as543be (2022)
Xtriage (Phenix)	:	1.21
EDS	:	3.0
Percentile statistics	:	20231227.v01 (using entries in the PDB archive December 27th 2023)
CCP4	:	9.0.004 (Gargrove)
Density-Fitness	:	1.0.11
Ideal geometry (proteins)	:	Engh & Huber (2001)
Ideal geometry (DNA, RNA)	:	Parkinson et al. (1996)
Validation Pipeline (wwPDB-VP)	:	2.40

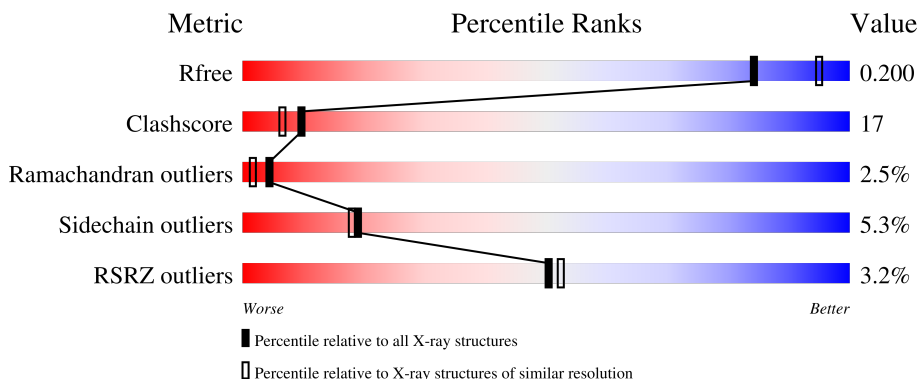
1 Overall quality at a glance

The following experimental techniques were used to determine the structure:

X-RAY DIFFRACTION

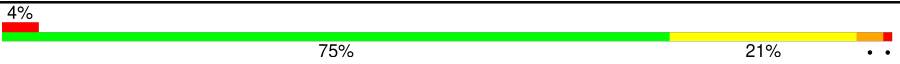
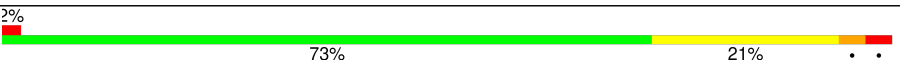
The reported resolution of this entry is 2.10 Å.

Percentile scores (ranging between 0-100) for global validation metrics of the entry are shown in the following graphic. The table shows the number of entries on which the scores are based.



Metric	Whole archive (#Entries)	Similar resolution (#Entries, resolution range(Å))
R_{free}	164625	6234 (2.10-2.10)
Clashscore	180529	6893 (2.10-2.10)
Ramachandran outliers	177936	6839 (2.10-2.10)
Sidechain outliers	177891	6840 (2.10-2.10)
RSRZ outliers	164620	6234 (2.10-2.10)

The table below summarises the geometric issues observed across the polymeric chains and their fit to the electron density. The red, orange, yellow and green segments of the lower bar indicate the fraction of residues that contain outliers for ≥ 3 , 2, 1 and 0 types of geometric quality criteria respectively. A grey segment represents the fraction of residues that are not modelled. The numeric value for each fraction is indicated below the corresponding segment, with a dot representing fractions $\leq 5\%$.

Mol	Chain	Length	Quality of chain
1	A	144	 4% 75% 21% . .
1	B	144	 2% 73% 21% . .

2 Entry composition

There are 3 unique types of molecules in this entry. The entry contains 2371 atoms, of which 0 are hydrogens and 0 are deuteriums.

In the tables below, the ZeroOcc column contains the number of atoms modelled with zero occupancy, the AltConf column contains the number of residues with at least one atom in alternate conformation and the Trace column contains the number of residues modelled with at most 2 atoms.

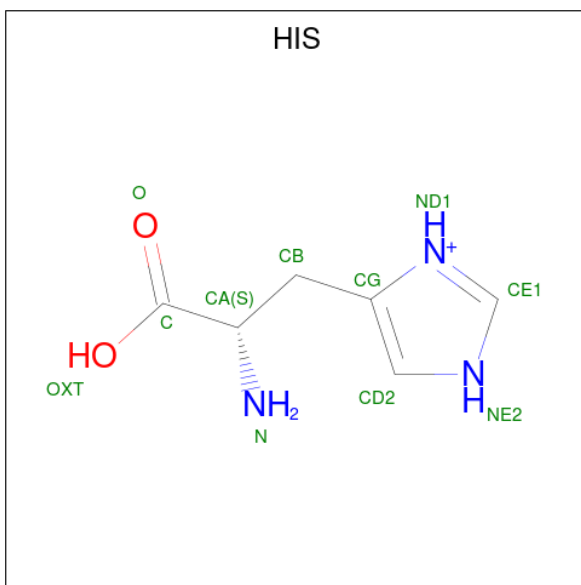
- Molecule 1 is a protein called conserved hypothetical protein.

Mol	Chain	Residues	Atoms						ZeroOcc	AltConf	Trace
1	A	144	Total	C	N	O	S	Se	0	7	0
			1139	733	182	217	3	4			
1	B	144	Total	C	N	O	S	Se	0	6	0
			1125	721	184	212	4	4			

There are 12 discrepancies between the modelled and reference sequences:

Chain	Residue	Modelled	Actual	Comment	Reference
A	-2	SER	-	cloning artifact	UNP Q8AA93
A	-1	ASN	-	cloning artifact	UNP Q8AA93
A	0	ALA	-	cloning artifact	UNP Q8AA93
A	1	MSE	MET	modified residue	UNP Q8AA93
A	100	MSE	MET	modified residue	UNP Q8AA93
A	118	MSE	MET	modified residue	UNP Q8AA93
B	-2	SER	-	cloning artifact	UNP Q8AA93
B	-1	ASN	-	cloning artifact	UNP Q8AA93
B	0	ALA	-	cloning artifact	UNP Q8AA93
B	1	MSE	MET	modified residue	UNP Q8AA93
B	100	MSE	MET	modified residue	UNP Q8AA93
B	118	MSE	MET	modified residue	UNP Q8AA93

- Molecule 2 is HISTIDINE (three-letter code: HIS) (formula: C₆H₁₀N₃O₂).



Mol	Chain	Residues	Atoms				ZeroOcc	AltConf
2	A	1	Total	C	N	O	0	0
			11	6	3	2		
2	B	1	Total	C	N	O	0	0
			11	6	3	2		

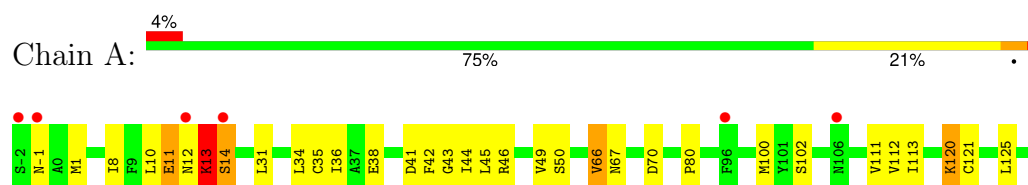
- Molecule 3 is water.

Mol	Chain	Residues	Atoms		ZeroOcc	AltConf
3	A	42	Total	O	0	0
			42	42		
3	B	43	Total	O	0	0
			43	43		

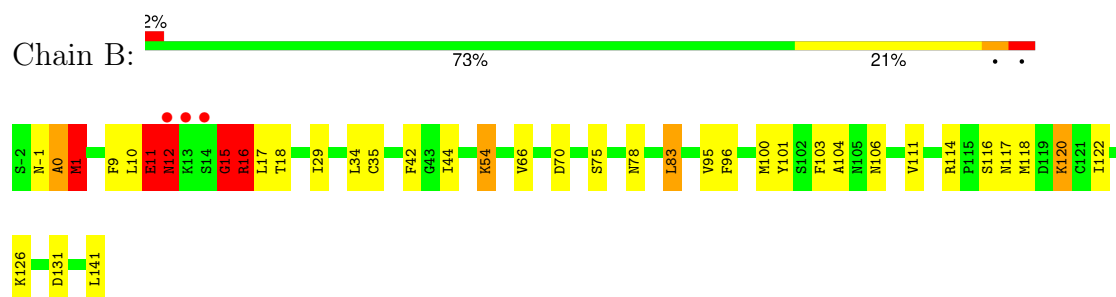
3 Residue-property plots

These plots are drawn for all protein, RNA, DNA and oligosaccharide chains in the entry. The first graphic for a chain summarises the proportions of the various outlier classes displayed in the second graphic. The second graphic shows the sequence view annotated by issues in geometry. Residues are color-coded according to the number of geometric quality criteria for which they contain at least one outlier: green = 0, yellow = 1, orange = 2 and red = 3 or more. Stretches of 2 or more consecutive residues without any outlier are shown as a green connector. Residues present in the sample, but not in the model, are shown in grey.

- Molecule 1: conserved hypothetical protein



- Molecule 1: conserved hypothetical protein



4 Data and refinement statistics

Property	Value	Source
Space group	P 61 2 2	Depositor
Cell constants a, b, c, α , β , γ	64.62Å 64.62Å 244.94Å 90.00° 90.00° 120.00°	Depositor
Resolution (Å)	50.00 – 2.10 50.00 – 2.10	Depositor EDS
% Data completeness (in resolution range)	99.7 (50.00-2.10) 99.7 (50.00-2.10)	Depositor EDS
R_{merge}	0.09	Depositor
R_{sym}	(Not available)	Depositor
$\langle I/\sigma(I) \rangle$ ¹	4.15 (at 2.10Å)	Xtriage
Refinement program	REFMAC 5.2.0005	Depositor
R, R_{free}	0.203 , 0.249 0.204 , 0.200	Depositor DCC
R_{free} test set	954 reflections (5.12%)	wwPDB-VP
Wilson B-factor (Å ²)	39.2	Xtriage
Anisotropy	0.325	Xtriage
Bulk solvent k_{sol} (e/Å ³), B_{sol} (Å ²)	0.34 , 41.7	EDS
L-test for twinning ²	$\langle L \rangle = 0.49$, $\langle L^2 \rangle = 0.32$	Xtriage
Estimated twinning fraction	No twinning to report.	Xtriage
F_o, F_c correlation	0.93	EDS
Total number of atoms	2371	wwPDB-VP
Average B, all atoms (Å ²)	23.0	wwPDB-VP

Xtriage's analysis on translational NCS is as follows: *The largest off-origin peak in the Patterson function is 4.67% of the height of the origin peak. No significant pseudotranslation is detected.*

¹Intensities estimated from amplitudes.

²Theoretical values of $\langle |L| \rangle$, $\langle L^2 \rangle$ for acentric reflections are 0.5, 0.333 respectively for untwinned datasets, and 0.375, 0.2 for perfectly twinned datasets.

5 Model quality

5.1 Standard geometry

The Z score for a bond length (or angle) is the number of standard deviations the observed value is removed from the expected value. A bond length (or angle) with $|Z| > 5$ is considered an outlier worth inspection. RMSZ is the root-mean-square of all Z scores of the bond lengths (or angles).

Mol	Chain	Bond lengths		Bond angles	
		RMSZ	$\# Z > 5$	RMSZ	$\# Z > 5$
1	A	1.06	1/1173 (0.1%)	1.05	4/1579 (0.3%)
1	B	1.23	6/1154 (0.5%)	1.12	4/1552 (0.3%)
All	All	1.15	7/2327 (0.3%)	1.09	8/3131 (0.3%)

Chiral center outliers are detected by calculating the chiral volume of a chiral center and verifying if the center is modelled as a planar moiety or with the opposite hand. A planarity outlier is detected by checking planarity of atoms in a peptide group, atoms in a mainchain group or atoms of a sidechain that are expected to be planar.

Mol	Chain	#Chirality outliers	#Planarity outliers
1	A	0	2
1	B	0	5
All	All	0	7

The worst 5 of 7 bond length outliers are listed below:

Mol	Chain	Res	Type	Atoms	Z	Observed(Å)	Ideal(Å)
1	A	35	CYS	CB-SG	-8.10	1.68	1.82
1	B	1[A]	MSE	SE-CE	-6.16	1.59	1.95
1	B	1[B]	MSE	SE-CE	-6.16	1.59	1.95
1	B	35[A]	CYS	CB-SG	-5.26	1.73	1.81
1	B	35[B]	CYS	CB-SG	-5.26	1.73	1.81

The worst 5 of 8 bond angle outliers are listed below:

Mol	Chain	Res	Type	Atoms	Z	Observed(°)	Ideal(°)
1	B	16	ARG	NE-CZ-NH1	9.96	125.28	120.30
1	A	46	ARG	NE-CZ-NH2	-7.77	116.42	120.30
1	A	14	SER	N-CA-C	6.09	127.43	111.00
1	A	66	VAL	CB-CA-C	-6.01	99.98	111.40
1	B	83	LEU	CB-CG-CD1	5.79	120.84	111.00

There are no chirality outliers.

5 of 7 planarity outliers are listed below:

Mol	Chain	Res	Type	Group
1	A	13	LYS	Peptide
1	A	14	SER	Peptide
1	B	-1	ASN	Peptide
1	B	11	GLU	Peptide
1	B	12	ASN	Peptide

5.2 Too-close contacts [i](#)

In the following table, the Non-H and H(model) columns list the number of non-hydrogen atoms and hydrogen atoms in the chain respectively. The H(added) column lists the number of hydrogen atoms added and optimized by MolProbity. The Clashes column lists the number of clashes within the asymmetric unit, whereas Symm-Clashes lists symmetry-related clashes.

Mol	Chain	Non-H	H(model)	H(added)	Clashes	Symm-Clashes
1	A	1139	0	1178	45	0
1	B	1125	0	1176	46	0
2	A	11	0	6	0	0
2	B	11	0	6	0	2
3	A	42	0	0	6	1
3	B	43	0	0	2	2
All	All	2371	0	2366	81	3

The all-atom clashscore is defined as the number of clashes found per 1000 atoms (including hydrogen atoms). The all-atom clashscore for this structure is 17.

The worst 5 of 81 close contacts within the same asymmetric unit are listed below, sorted by their clash magnitude.

Atom-1	Atom-2	Interatomic distance (Å)	Clash overlap (Å)
1:B:118:MSE:SE	1:B:118:MSE:CE	2.17	1.42
1:A:102:SER:HB2	3:A:158:HOH:O	1.09	1.26
1:B:15:GLY:HA2	1:B:17:LEU:N	1.61	1.15
1:A:13:LYS:NZ	1:A:38[B]:GLU:OE1	1.85	1.08
1:B:1[B]:MSE:SE	1:B:126[B]:LYS:NZ	2.50	0.93

All (3) symmetry-related close contacts are listed below. The label for Atom-2 includes the symmetry operator and encoded unit-cell translations to be applied.

Atom-1	Atom-2	Interatomic distance (Å)	Clash overlap (Å)
3:A:184:HOH:O	3:A:185:HOH:O[12_565]	1.73	0.47
2:B:151:HIS:CE1	3:B:169:HOH:O[12_565]	1.78	0.42
2:B:151:HIS:NE2	3:B:169:HOH:O[12_565]	1.78	0.42

5.3 Torsion angles [i](#)

5.3.1 Protein backbone [i](#)

In the following table, the Percentiles column shows the percent Ramachandran outliers of the chain as a percentile score with respect to all X-ray entries followed by that with respect to entries of similar resolution.

The Analysed column shows the number of residues for which the backbone conformation was analysed, and the total number of residues.

Mol	Chain	Analysed	Favoured	Allowed	Outliers	Percentiles	
1	A	149/144 (104%)	139 (93%)	9 (6%)	1 (1%)	19	16
1	B	148/144 (103%)	139 (94%)	2 (1%)	7 (5%)	2	0
All	All	297/288 (103%)	278 (94%)	11 (4%)	8 (3%)	4	1

5 of 8 Ramachandran outliers are listed below:

Mol	Chain	Res	Type
1	A	13	LYS
1	B	12	ASN
1	B	15	GLY
1	B	0	ALA
1	B	16	ARG

5.3.2 Protein sidechains [i](#)

In the following table, the Percentiles column shows the percent sidechain outliers of the chain as a percentile score with respect to all X-ray entries followed by that with respect to entries of similar resolution.

The Analysed column shows the number of residues for which the sidechain conformation was analysed, and the total number of residues.

Mol	Chain	Analysed	Rotameric	Outliers	Percentiles	
1	A	128/118 (108%)	122 (95%)	6 (5%)	22	22
1	B	126/118 (107%)	118 (94%)	8 (6%)	15	13

Continued on next page...

Continued from previous page...

Mol	Chain	Analysed	Rotameric	Outliers	Percentiles	
All	All	254/236 (108%)	240 (94%)	14 (6%)	19	16

5 of 14 residues with a non-rotameric sidechain are listed below:

Mol	Chain	Res	Type
1	B	54[A]	LYS
1	B	54[B]	LYS
1	B	141	LEU
1	B	114	ARG
1	B	120	LYS

Sometimes sidechains can be flipped to improve hydrogen bonding and reduce clashes. 5 of 9 such sidechains are listed below:

Mol	Chain	Res	Type
1	B	67	ASN
1	B	107	ASN
1	A	107	ASN
1	B	-1	ASN
1	B	5	GLN

5.3.3 RNA [i](#)

There are no RNA molecules in this entry.

5.4 Non-standard residues in protein, DNA, RNA chains [i](#)

There are no non-standard protein/DNA/RNA residues in this entry.

5.5 Carbohydrates [i](#)

There are no oligosaccharides in this entry.

5.6 Ligand geometry [i](#)

2 ligands are modelled in this entry.

In the following table, the Counts columns list the number of bonds (or angles) for which Mogul statistics could be retrieved, the number of bonds (or angles) that are observed in the model and the number of bonds (or angles) that are defined in the Chemical Component Dictionary. The

Link column lists molecule types, if any, to which the group is linked. The Z score for a bond length (or angle) is the number of standard deviations the observed value is removed from the expected value. A bond length (or angle) with $|Z| > 2$ is considered an outlier worth inspection. RMSZ is the root-mean-square of all Z scores of the bond lengths (or angles).

Mol	Type	Chain	Res	Link	Bond lengths			Bond angles		
					Counts	RMSZ	# Z > 2	Counts	RMSZ	# Z > 2
2	HIS	A	152	-	6,11,11	0.92	0	5,14,14	1.75	2 (40%)
2	HIS	B	151	-	6,11,11	1.24	1 (16%)	5,14,14	1.43	2 (40%)

In the following table, the Chirals column lists the number of chiral outliers, the number of chiral centers analysed, the number of these observed in the model and the number defined in the Chemical Component Dictionary. Similar counts are reported in the Torsion and Rings columns. '-' means no outliers of that kind were identified.

Mol	Type	Chain	Res	Link	Chirals	Torsions	Rings
2	HIS	A	152	-	-	1/8/8/8	0/1/1/1
2	HIS	B	151	-	-	2/8/8/8	0/1/1/1

All (1) bond length outliers are listed below:

Mol	Chain	Res	Type	Atoms	Z	Observed(Å)	Ideal(Å)
2	B	151	HIS	O-C	2.32	1.29	1.22

All (4) bond angle outliers are listed below:

Mol	Chain	Res	Type	Atoms	Z	Observed(°)	Ideal(°)
2	A	152	HIS	OXT-C-O	-2.79	117.74	124.08
2	B	151	HIS	CD2-NE2-CE1	2.22	109.23	105.72
2	B	151	HIS	CB-CG-CD2	2.09	131.48	127.75
2	A	152	HIS	CD2-NE2-CE1	2.04	108.95	105.72

There are no chirality outliers.

All (3) torsion outliers are listed below:

Mol	Chain	Res	Type	Atoms
2	B	151	HIS	N-CA-CB-CG
2	B	151	HIS	C-CA-CB-CG
2	A	152	HIS	OXT-C-CA-CB

There are no ring outliers.

1 monomer is involved in 2 short contacts:

Mol	Chain	Res	Type	Clashes	Symm-Clashes
2	B	151	HIS	0	2

5.7 Other polymers [i](#)

There are no such residues in this entry.

5.8 Polymer linkage issues [i](#)

There are no chain breaks in this entry.

6 Fit of model and data [i](#)

6.1 Protein, DNA and RNA chains [i](#)

Warning: The R factor obtained from EDS is 0.2603, which does not match the depositor's R factor of 0.20252. Please interpret the results in this section carefully.

In the following table, the column labelled '#RSRZ > 2' contains the number (and percentage) of RSRZ outliers, followed by percent RSRZ outliers for the chain as percentile scores relative to all X-ray entries and entries of similar resolution. The OWAB column contains the minimum, median, 95th percentile and maximum values of the occupancy-weighted average B-factor per residue. The column labelled 'Q < 0.9' lists the number of (and percentage) of residues with an average occupancy less than 0.9.

Mol	Chain	Analysed	<RSRZ>	#RSRZ>2	OWAB(Å ²)	Q<0.9
1	A	141/144 (97%)	0.40	6 (4%) 40 42	14, 25, 35, 45	6 (4%)
1	B	141/144 (97%)	-0.12	3 (2%) 63 65	8, 20, 29, 37	5 (3%)
All	All	282/288 (97%)	0.14	9 (3%) 50 52	8, 23, 33, 45	11 (3%)

The worst 5 of 9 RSRZ outliers are listed below:

Mol	Chain	Res	Type	RSRZ
1	B	14	SER	3.6
1	A	14	SER	3.1
1	B	13	LYS	2.6
1	A	-1	ASN	2.6
1	A	-2	SER	2.4

6.2 Non-standard residues in protein, DNA, RNA chains [i](#)

There are no non-standard protein/DNA/RNA residues in this entry.

6.3 Carbohydrates [i](#)

There are no monosaccharides in this entry.

6.4 Ligands [i](#)

In the following table, the Atoms column lists the number of modelled atoms in the group and the number defined in the chemical component dictionary. The B-factors column lists the minimum, median, 95th percentile and maximum values of B factors of atoms in the group. The column labelled 'Q < 0.9' lists the number of atoms with occupancy less than 0.9.

Mol	Type	Chain	Res	Atoms	RSCC	RSR	B-factors(\AA^2)	Q<0.9
2	HIS	A	152	11/11	0.85	0.10	23,24,31,32	0
2	HIS	B	151	11/11	0.88	0.23	19,21,25,28	0

6.5 Other polymers [i](#)

There are no such residues in this entry.