



# wwPDB X-ray Structure Validation Summary Report ⓘ

Sep 28, 2024 – 08:34 pm BST

PDB ID : 6FG7  
Title : Crystal structure of the BIR2 ectodomain from Arabidopsis thaliana.  
Authors : Hothorn, M.; Hohmann, U.  
Deposited on : 2018-01-10  
Resolution : 1.90 Å(reported)

This is a wwPDB X-ray Structure Validation Summary Report for a publicly released PDB entry.

We welcome your comments at [validation@mail.wwpdb.org](mailto:validation@mail.wwpdb.org)

A user guide is available at

<https://www.wwpdb.org/validation/2017/XrayValidationReportHelp>

with specific help available everywhere you see the ⓘ symbol.

The types of validation reports are described at

<http://www.wwpdb.org/validation/2017/FAQs#types>.

---

The following versions of software and data (see [references ⓘ](#)) were used in the production of this report:

MolProbity : 4.02b-467  
Mogul : 1.8.4, CSD as541be (2020)  
Xtriage (Phenix) : 1.13  
EDS : 3.0  
Percentile statistics : 20231227.v01 (using entries in the PDB archive December 27th 2023)  
CCP4 : 9.0.003 (Gargrove)  
Density-Fitness : 1.0.11  
Ideal geometry (proteins) : Engh & Huber (2001)  
Ideal geometry (DNA, RNA) : Parkinson et al. (1996)  
Validation Pipeline (wwPDB-VP) : 2.39

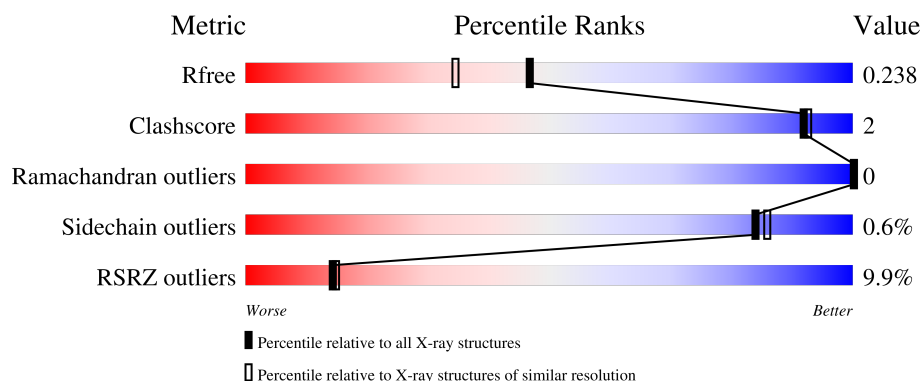
# 1 Overall quality at a glance

The following experimental techniques were used to determine the structure:

*X-RAY DIFFRACTION*

The reported resolution of this entry is 1.90 Å.

Percentile scores (ranging between 0-100) for global validation metrics of the entry are shown in the following graphic. The table shows the number of entries on which the scores are based.



Metric	Whole archive (#Entries)	Similar resolution (#Entries, resolution range(Å))
$R_{free}$	164625	7293 (1.90-1.90)
Clashscore	180529	8090 (1.90-1.90)
Ramachandran outliers	177936	8022 (1.90-1.90)
Sidechain outliers	177891	8022 (1.90-1.90)
RSRZ outliers	164620	7292 (1.90-1.90)

The table below summarises the geometric issues observed across the polymeric chains and their fit to the electron density. The red, orange, yellow and green segments of the lower bar indicate the fraction of residues that contain outliers for  $\geq 3$ , 2, 1 and 0 types of geometric quality criteria respectively. A grey segment represents the fraction of residues that are not modelled. The numeric value for each fraction is indicated below the corresponding segment, with a dot representing fractions  $\leq 5\%$ . The upper red bar (where present) indicates the fraction of residues that have poor fit to the electron density. The numeric value is given above the bar.

Mol	Chain	Length	Quality of chain
1	A	250	<div> <div>6%</div> <div> <div></div> <div>74%</div> <div>.</div> <div>23%</div> </div> </div>
1	B	250	<div> <div>9%</div> <div> <div></div> <div>73%</div> <div>.</div> <div>23%</div> </div> </div>
2	C	3	<div> <div>33%</div> <div>67%</div> </div>

## 2 Entry composition

There are 5 unique types of molecules in this entry. The entry contains 3164 atoms, of which 0 are hydrogens and 0 are deuteriums.

In the tables below, the ZeroOcc column contains the number of atoms modelled with zero occupancy, the AltConf column contains the number of residues with at least one atom in alternate conformation and the Trace column contains the number of residues modelled with at most 2 atoms.

- Molecule 1 is a protein called Inactive LRR receptor-like serine/threonine-protein kinase BIR2.

Mol	Chain	Residues	Atoms					ZeroOcc	AltConf	Trace
1	A	193	Total	C	N	O	S	0	3	0
			1492	930	260	293	9			
1	B	192	Total	C	N	O	S	0	4	0
			1494	933	260	292	9			

There are 54 discrepancies between the modelled and reference sequences:

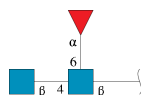
Chain	Residue	Modelled	Actual	Comment	Reference
A	224	GLU	-	expression tag	UNP Q9LSI9
A	225	ASN	-	expression tag	UNP Q9LSI9
A	226	LEU	-	expression tag	UNP Q9LSI9
A	227	TYR	-	expression tag	UNP Q9LSI9
A	228	PHE	-	expression tag	UNP Q9LSI9
A	229	GLN	-	expression tag	UNP Q9LSI9
A	230	GLY	-	expression tag	UNP Q9LSI9
A	231	ALA	-	expression tag	UNP Q9LSI9
A	232	TRP	-	expression tag	UNP Q9LSI9
A	233	SER	-	expression tag	UNP Q9LSI9
A	234	HIS	-	expression tag	UNP Q9LSI9
A	235	PRO	-	expression tag	UNP Q9LSI9
A	236	GLN	-	expression tag	UNP Q9LSI9
A	237	PHE	-	expression tag	UNP Q9LSI9
A	238	GLU	-	expression tag	UNP Q9LSI9
A	239	LYS	-	expression tag	UNP Q9LSI9
A	240	GLY	-	expression tag	UNP Q9LSI9
A	241	SER	-	expression tag	UNP Q9LSI9
A	242	HIS	-	expression tag	UNP Q9LSI9
A	243	HIS	-	expression tag	UNP Q9LSI9
A	244	HIS	-	expression tag	UNP Q9LSI9
A	245	HIS	-	expression tag	UNP Q9LSI9
A	246	HIS	-	expression tag	UNP Q9LSI9
A	247	HIS	-	expression tag	UNP Q9LSI9

*Continued on next page...*

Continued from previous page...

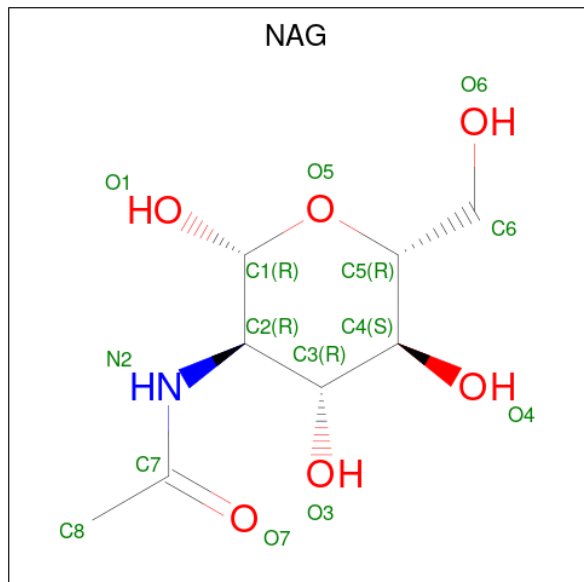
Chain	Residue	Modelled	Actual	Comment	Reference
A	248	HIS	-	expression tag	UNP Q9LSI9
A	249	HIS	-	expression tag	UNP Q9LSI9
A	250	HIS	-	expression tag	UNP Q9LSI9
B	224	GLU	-	expression tag	UNP Q9LSI9
B	225	ASN	-	expression tag	UNP Q9LSI9
B	226	LEU	-	expression tag	UNP Q9LSI9
B	227	TYR	-	expression tag	UNP Q9LSI9
B	228	PHE	-	expression tag	UNP Q9LSI9
B	229	GLN	-	expression tag	UNP Q9LSI9
B	230	GLY	-	expression tag	UNP Q9LSI9
B	231	ALA	-	expression tag	UNP Q9LSI9
B	232	TRP	-	expression tag	UNP Q9LSI9
B	233	SER	-	expression tag	UNP Q9LSI9
B	234	HIS	-	expression tag	UNP Q9LSI9
B	235	PRO	-	expression tag	UNP Q9LSI9
B	236	GLN	-	expression tag	UNP Q9LSI9
B	237	PHE	-	expression tag	UNP Q9LSI9
B	238	GLU	-	expression tag	UNP Q9LSI9
B	239	LYS	-	expression tag	UNP Q9LSI9
B	240	GLY	-	expression tag	UNP Q9LSI9
B	241	SER	-	expression tag	UNP Q9LSI9
B	242	HIS	-	expression tag	UNP Q9LSI9
B	243	HIS	-	expression tag	UNP Q9LSI9
B	244	HIS	-	expression tag	UNP Q9LSI9
B	245	HIS	-	expression tag	UNP Q9LSI9
B	246	HIS	-	expression tag	UNP Q9LSI9
B	247	HIS	-	expression tag	UNP Q9LSI9
B	248	HIS	-	expression tag	UNP Q9LSI9
B	249	HIS	-	expression tag	UNP Q9LSI9
B	250	HIS	-	expression tag	UNP Q9LSI9

- Molecule 2 is an oligosaccharide called 2-acetamido-2-deoxy-beta-D-glucopyranose-(1-4)-[alpha-L-fucopyranose-(1-6)]2-acetamido-2-deoxy-beta-D-glucopyranose.



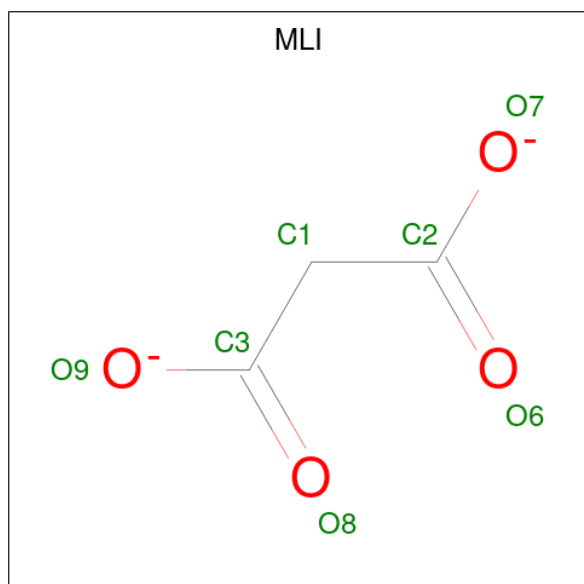
Mol	Chain	Residues	Atoms				ZeroOcc	AltConf	Trace
2	C	3	Total	C	N	O	0	0	0
			38	22	2	14			

- Molecule 3 is 2-acetamido-2-deoxy-beta-D-glucopyranose (three-letter code: NAG) (formula:  $C_8H_{15}NO_6$ ).



Mol	Chain	Residues	Atoms				ZeroOcc	AltConf
3	B	1	Total	C	N	O	0	0
			14	8	1	5		

- Molecule 4 is MALONATE ION (three-letter code: MLI) (formula:  $C_3H_2O_4$ ).



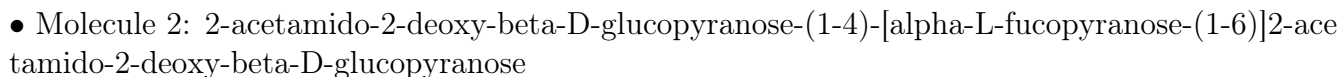
Mol	Chain	Residues	Atoms			ZeroOcc	AltConf
4	B	1	Total	C	O	0	0
			7	3	4		

- Molecule 5 is water.

Mol	Chain	Residues	Atoms		ZeroOcc	AltConf
5	A	64	Total 64	O 64	0	0
5	B	55	Total 55	O 55	0	0



- Molecule 1: Inactive LRR receptor-like serine/threonine-protein kinase BIR2



## 4 Data and refinement statistics

Property	Value	Source
Space group	P 64 2 2	Depositor
Cell constants a, b, c, $\alpha$ , $\beta$ , $\gamma$	153.77Å 153.77Å 110.06Å 90.00° 90.00° 120.00°	Depositor
Resolution (Å)	45.77 – 1.90 45.77 – 1.90	Depositor EDS
% Data completeness (in resolution range)	99.7 (45.77-1.90) 99.7 (45.77-1.90)	Depositor EDS
$R_{merge}$	(Not available)	Depositor
$R_{sym}$	0.21	Depositor
$\langle I/\sigma(I) \rangle$ <sup>1</sup>	0.99 (at 1.89Å)	Xtriage
Refinement program	REFMAC 5.8.0155	Depositor
R, $R_{free}$	0.214 , 0.233 0.221 , 0.238	Depositor DCC
$R_{free}$ test set	3017 reflections (5.00%)	wwPDB-VP
Wilson B-factor (Å <sup>2</sup> )	28.7	Xtriage
Anisotropy	0.438	Xtriage
Bulk solvent $k_{sol}$ (e/Å <sup>3</sup> ), $B_{sol}$ (Å <sup>2</sup> )	0.38 , 29.4	EDS
L-test for twinning <sup>2</sup>	$\langle  L  \rangle = 0.49$ , $\langle L^2 \rangle = 0.32$	Xtriage
Estimated twinning fraction	No twinning to report.	Xtriage
$F_o, F_c$ correlation	0.95	EDS
Total number of atoms	3164	wwPDB-VP
Average B, all atoms (Å <sup>2</sup> )	37.0	wwPDB-VP

Xtriage's analysis on translational NCS is as follows: *The largest off-origin peak in the Patterson function is 5.08% of the height of the origin peak. No significant pseudotranslation is detected.*

<sup>1</sup>Intensities estimated from amplitudes.

<sup>2</sup>Theoretical values of  $\langle |L| \rangle$ ,  $\langle L^2 \rangle$  for acentric reflections are 0.5, 0.333 respectively for untwinned datasets, and 0.375, 0.2 for perfectly twinned datasets.



## 5 Model quality [i](#)

### 5.1 Standard geometry [i](#)

Bond lengths and bond angles in the following residue types are not validated in this section: FUC, MLI, NAG

The Z score for a bond length (or angle) is the number of standard deviations the observed value is removed from the expected value. A bond length (or angle) with  $|Z| > 5$  is considered an outlier worth inspection. RMSZ is the root-mean-square of all Z scores of the bond lengths (or angles).

Mol	Chain	Bond lengths		Bond angles	
		RMSZ	$\# Z  > 5$	RMSZ	$\# Z  > 5$
1	A	0.41	0/1528	0.66	0/2071
1	B	0.40	0/1533	0.65	0/2077
All	All	0.40	0/3061	0.65	0/4148

There are no bond length outliers.

There are no bond angle outliers.

There are no chirality outliers.

There are no planarity outliers.

### 5.2 Too-close contacts [i](#)

In the following table, the Non-H and H(model) columns list the number of non-hydrogen atoms and hydrogen atoms in the chain respectively. The H(added) column lists the number of hydrogen atoms added and optimized by MolProbity. The Clashes column lists the number of clashes within the asymmetric unit, whereas Symm-Clashes lists symmetry-related clashes.

Mol	Chain	Non-H	H(model)	H(added)	Clashes	Symm-Clashes
1	A	1492	0	1457	4	0
1	B	1494	0	1467	5	0
2	C	38	0	34	0	0
3	B	14	0	13	0	0
4	B	7	0	2	0	0
5	A	64	0	0	0	0
5	B	55	0	0	0	0
All	All	3164	0	2973	9	0

The all-atom clashscore is defined as the number of clashes found per 1000 atoms (including hydrogen atoms). The all-atom clashscore for this structure is 2.

The worst 5 of 9 close contacts within the same asymmetric unit are listed below, sorted by their clash magnitude.

Atom-1	Atom-2	Interatomic distance (Å)	Clash overlap (Å)
1:B:84[B]:GLU:OE2	1:B:106[B]:LYS:HE2	1.68	0.93
1:B:84[B]:GLU:CD	1:B:106[B]:LYS:HE2	2.24	0.57
1:A:112:ASN:HB2	1:A:137:ASN:HD21	1.76	0.51
1:B:112:ASN:HB2	1:B:137:ASN:HD21	1.80	0.46
1:B:153[B]:VAL:HG12	1:B:174:LEU:HD22	1.97	0.46

There are no symmetry-related clashes.

## 5.3 Torsion angles [i](#)

### 5.3.1 Protein backbone [i](#)

In the following table, the Percentiles column shows the percent Ramachandran outliers of the chain as a percentile score with respect to all X-ray entries followed by that with respect to entries of similar resolution.

The Analysed column shows the number of residues for which the backbone conformation was analysed, and the total number of residues.

Mol	Chain	Analysed	Favoured	Allowed	Outliers	Percentiles	
1	A	194/250 (78%)	185 (95%)	9 (5%)	0	100	100
1	B	194/250 (78%)	186 (96%)	8 (4%)	0	100	100
All	All	388/500 (78%)	371 (96%)	17 (4%)	0	100	100

There are no Ramachandran outliers to report.

### 5.3.2 Protein sidechains [i](#)

In the following table, the Percentiles column shows the percent sidechain outliers of the chain as a percentile score with respect to all X-ray entries followed by that with respect to entries of similar resolution.

The Analysed column shows the number of residues for which the sidechain conformation was analysed, and the total number of residues.

Mol	Chain	Analysed	Rotameric	Outliers	Percentiles	
1	A	174/222 (78%)	173 (99%)	1 (1%)	84	86

*Continued on next page...*

*Continued from previous page...*

Mol	Chain	Analysed	Rotameric	Outliers	Percentiles	
1	B	175/222 (79%)	174 (99%)	1 (1%)	84	86
All	All	349/444 (79%)	347 (99%)	2 (1%)	84	86

All (2) residues with a non-rotameric sidechain are listed below:

Mol	Chain	Res	Type
1	A	214	ARG
1	B	59	THR

Sometimes sidechains can be flipped to improve hydrogen bonding and reduce clashes. 5 of 6 such sidechains are listed below:

Mol	Chain	Res	Type
1	B	48	GLN
1	B	82	ASN
1	B	137	ASN
1	A	137	ASN
1	A	105	GLN

### 5.3.3 RNA ⓘ

There are no RNA molecules in this entry.

## 5.4 Non-standard residues in protein, DNA, RNA chains ⓘ

There are no non-standard protein/DNA/RNA residues in this entry.

## 5.5 Carbohydrates ⓘ

3 monosaccharides are modelled in this entry.

In the following table, the Counts columns list the number of bonds (or angles) for which Mogul statistics could be retrieved, the number of bonds (or angles) that are observed in the model and the number of bonds (or angles) that are defined in the Chemical Component Dictionary. The Link column lists molecule types, if any, to which the group is linked. The Z score for a bond length (or angle) is the number of standard deviations the observed value is removed from the expected value. A bond length (or angle) with  $|Z| > 2$  is considered an outlier worth inspection. RMSZ is the root-mean-square of all Z scores of the bond lengths (or angles).

Mol	Type	Chain	Res	Link	Bond lengths			Bond angles		
					Counts	RMSZ	# Z  > 2	Counts	RMSZ	# Z  > 2
2	NAG	C	1	2,1	14,14,15	0.36	0	17,19,21	1.31	1 (5%)
2	NAG	C	2	2	14,14,15	0.35	0	17,19,21	0.82	1 (5%)
2	FUC	C	3	2	10,10,11	0.38	0	14,14,16	0.59	0

In the following table, the Chirals column lists the number of chiral outliers, the number of chiral centers analysed, the number of these observed in the model and the number defined in the Chemical Component Dictionary. Similar counts are reported in the Torsion and Rings columns. '-' means no outliers of that kind were identified.

Mol	Type	Chain	Res	Link	Chirals	Torsions	Rings
2	NAG	C	1	2,1	-	0/6/23/26	0/1/1/1
2	NAG	C	2	2	-	0/6/23/26	0/1/1/1
2	FUC	C	3	2	-	-	0/1/1/1

There are no bond length outliers.

All (2) bond angle outliers are listed below:

Mol	Chain	Res	Type	Atoms	Z	Observed(°)	Ideal(°)
2	C	1	NAG	C1-O5-C5	4.78	118.67	112.19
2	C	2	NAG	C1-O5-C5	2.01	114.92	112.19

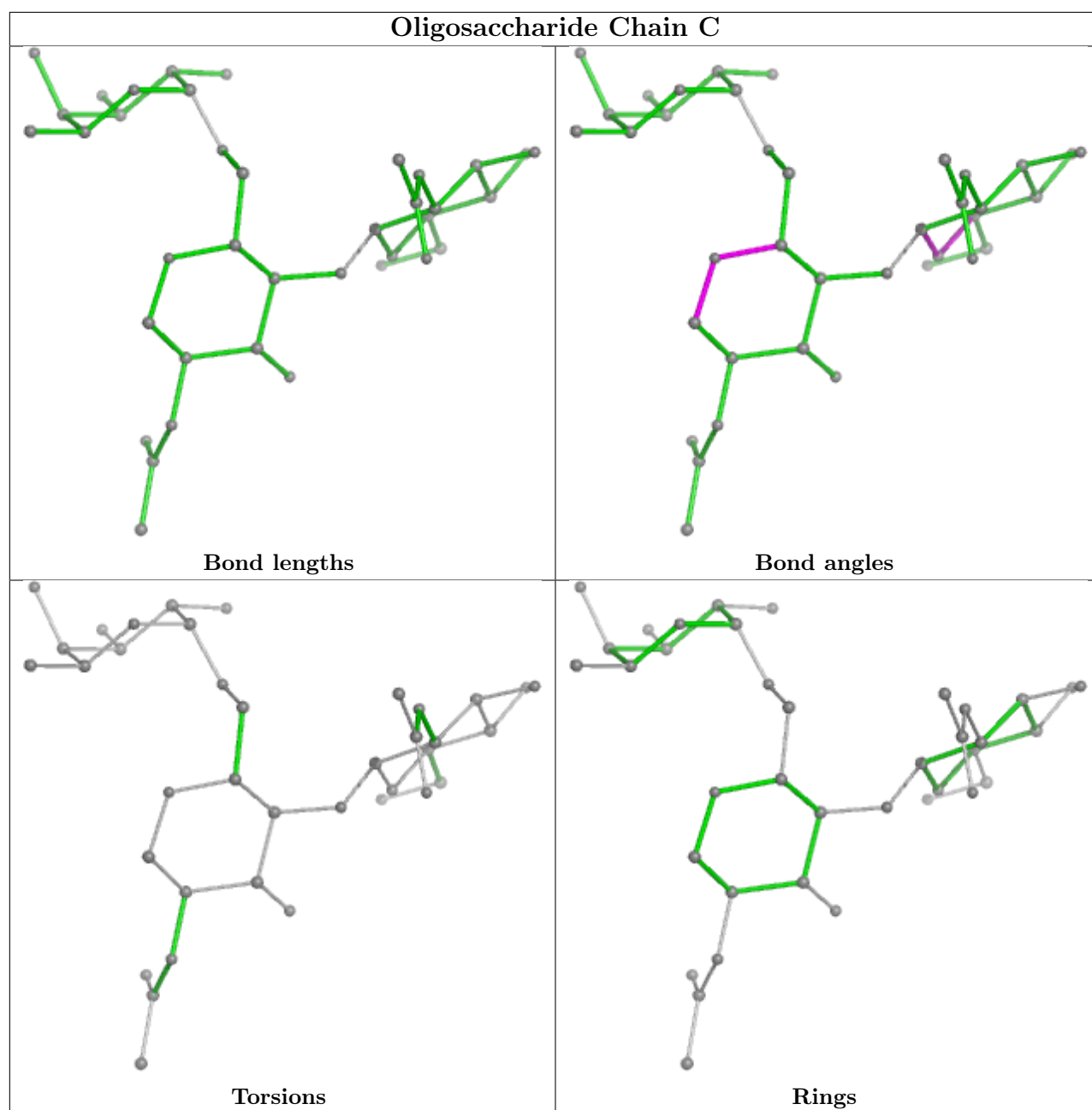
There are no chirality outliers.

There are no torsion outliers.

There are no ring outliers.

No monomer is involved in short contacts.

The following is a two-dimensional graphical depiction of Mogul quality analysis of bond lengths, bond angles, torsion angles, and ring geometry for oligosaccharide.



## 5.6 Ligand geometry [i](#)

2 ligands are modelled in this entry.

In the following table, the Counts columns list the number of bonds (or angles) for which Mogul statistics could be retrieved, the number of bonds (or angles) that are observed in the model and the number of bonds (or angles) that are defined in the Chemical Component Dictionary. The Link column lists molecule types, if any, to which the group is linked. The Z score for a bond length (or angle) is the number of standard deviations the observed value is removed from the expected value. A bond length (or angle) with  $|Z| > 2$  is considered an outlier worth inspection. RMSZ is the root-mean-square of all Z scores of the bond lengths (or angles).

Mol	Type	Chain	Res	Link	Bond lengths			Bond angles		
					Counts	RMSZ	# Z  > 2	Counts	RMSZ	# Z  > 2
3	NAG	B	1000	1	14,14,15	0.49	0	17,19,21	1.71	3 (17%)
4	MLI	B	1001	-	6,6,6	1.17	0	7,7,7	0.51	0

In the following table, the Chirals column lists the number of chiral outliers, the number of chiral centers analysed, the number of these observed in the model and the number defined in the Chemical Component Dictionary. Similar counts are reported in the Torsion and Rings columns. '-' means no outliers of that kind were identified.

Mol	Type	Chain	Res	Link	Chirals	Torsions	Rings
3	NAG	B	1000	1	-	4/6/23/26	0/1/1/1
4	MLI	B	1001	-	-	0/4/4/4	-

There are no bond length outliers.

All (3) bond angle outliers are listed below:

Mol	Chain	Res	Type	Atoms	Z	Observed(°)	Ideal(°)
3	B	1000	NAG	C1-O5-C5	4.48	118.27	112.19
3	B	1000	NAG	O5-C1-C2	-2.65	107.10	111.29
3	B	1000	NAG	C8-C7-N2	2.50	120.34	116.10

There are no chirality outliers.

All (4) torsion outliers are listed below:

Mol	Chain	Res	Type	Atoms
3	B	1000	NAG	C8-C7-N2-C2
3	B	1000	NAG	O7-C7-N2-C2
3	B	1000	NAG	C4-C5-C6-O6
3	B	1000	NAG	O5-C5-C6-O6

There are no ring outliers.

No monomer is involved in short contacts.

## 5.7 Other polymers [i](#)

There are no such residues in this entry.

## 5.8 Polymer linkage issues [i](#)

There are no chain breaks in this entry.

## 6 Fit of model and data [i](#)

### 6.1 Protein, DNA and RNA chains [i](#)

In the following table, the column labelled ‘#RSRZ> 2’ contains the number (and percentage) of RSRZ outliers, followed by percent RSRZ outliers for the chain as percentile scores relative to all X-ray entries and entries of similar resolution. The OWAB column contains the minimum, median, 95<sup>th</sup> percentile and maximum values of the occupancy-weighted average B-factor per residue. The column labelled ‘Q< 0.9’ lists the number of (and percentage) of residues with an average occupancy less than 0.9.

Mol	Chain	Analysed	<RSRZ>	#RSRZ>2	OWAB(Å <sup>2</sup> )	Q<0.9
1	A	193/250 (77%)	0.51	16 (8%) 19 20	15, 36, 49, 79	3 (1%)
1	B	192/250 (76%)	0.63	22 (11%) 11 11	15, 37, 55, 70	4 (2%)
All	All	385/500 (77%)	0.57	38 (9%) 14 15	15, 36, 51, 79	7 (1%)

The worst 5 of 38 RSRZ outliers are listed below:

Mol	Chain	Res	Type	RSRZ
1	B	29	ALA	9.5
1	A	73	TRP	7.0
1	A	74	ASN	4.6
1	B	59	THR	4.6
1	B	218	SER	4.2

### 6.2 Non-standard residues in protein, DNA, RNA chains [i](#)

There are no non-standard protein/DNA/RNA residues in this entry.

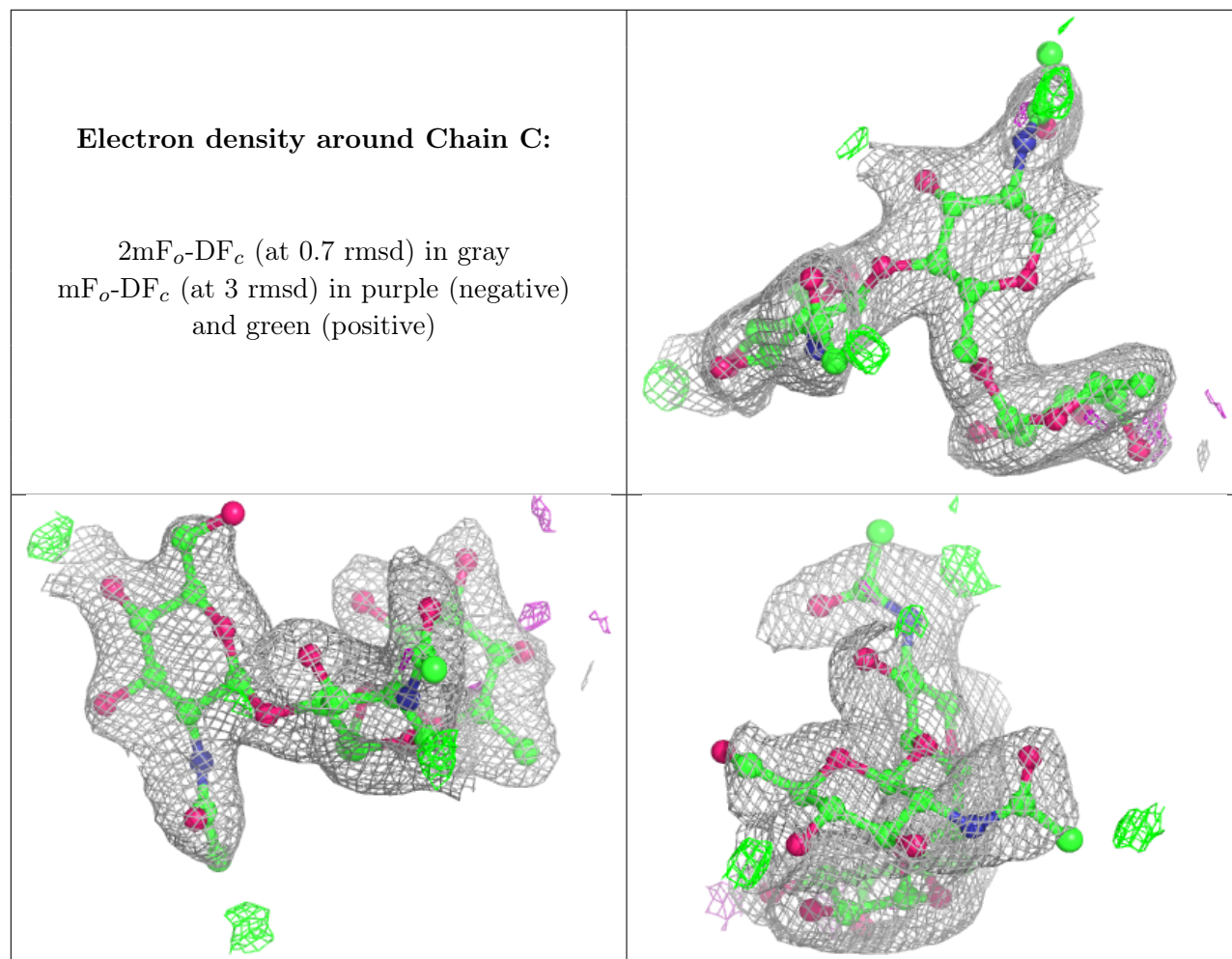
### 6.3 Carbohydrates [i](#)

In the following table, the Atoms column lists the number of modelled atoms in the group and the number defined in the chemical component dictionary. The B-factors column lists the minimum, median, 95<sup>th</sup> percentile and maximum values of B factors of atoms in the group. The column labelled ‘Q< 0.9’ lists the number of atoms with occupancy less than 0.9.

Mol	Type	Chain	Res	Atoms	RSCC	RSR	B-factors(Å <sup>2</sup> )	Q<0.9
2	NAG	C	2	14/15	0.78	0.17	59,61,64,65	0
2	FUC	C	3	10/11	0.84	0.16	49,49,50,50	0
2	NAG	C	1	14/15	0.89	0.13	43,49,50,55	0

The following is a graphical depiction of the model fit to experimental electron density for oligosac-

charide. Each fit is shown from different orientation to approximate a three-dimensional view.



## 6.4 Ligands [i](#)

In the following table, the Atoms column lists the number of modelled atoms in the group and the number defined in the chemical component dictionary. The B-factors column lists the minimum, median, 95<sup>th</sup> percentile and maximum values of B factors of atoms in the group. The column labelled 'Q<0.9' lists the number of atoms with occupancy less than 0.9.

Mol	Type	Chain	Res	Atoms	RSCC	RSR	B-factors(Å <sup>2</sup> )	Q<0.9
3	NAG	B	1000	14/15	0.39	0.27	56,61,64,65	0
4	MLI	B	1001	7/7	0.91	0.12	39,40,43,43	0

## 6.5 Other polymers [i](#)

There are no such residues in this entry.