



# Full wwPDB EM Validation Report ⓘ

Jan 2, 2025 – 12:57 AM EST

PDB ID : 9FJC  
EMDB ID : EMD-50497  
Title : Compact CVB1-VLP (Tween80)  
Authors : Plavec, Z.; Butcher, S.J.  
Deposited on : 2024-05-30  
Resolution : 2.15 Å(reported)

This is a Full wwPDB EM Validation Report for a publicly released PDB entry.

We welcome your comments at [validation@mail.wwpdb.org](mailto:validation@mail.wwpdb.org)

A user guide is available at

<https://www.wwpdb.org/validation/2017/EMValidationReportHelp>

with specific help available everywhere you see the ⓘ symbol.

The types of validation reports are described at

<http://www.wwpdb.org/validation/2017/FAQs#types>.

---

The following versions of software and data (see [references ⓘ](#)) were used in the production of this report:

EMDB validation analysis : 0.0.1.dev113  
Mogul : 2022.3.0, CSD as543be (2022)  
MolProbity : 4.02b-467  
buster-report : 1.1.7 (2018)  
Percentile statistics : 20231227.v01 (using entries in the PDB archive December 27th 2023)  
MapQ : 1.9.13  
Ideal geometry (proteins) : Engh & Huber (2001)  
Ideal geometry (DNA, RNA) : Parkinson et al. (1996)  
Validation Pipeline (wwPDB-VP) : 2.40

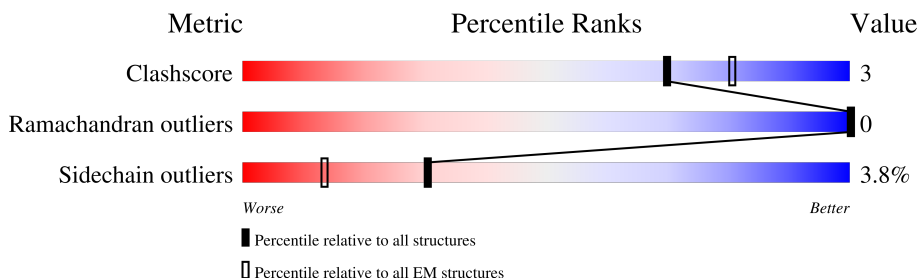
# 1 Overall quality at a glance

The following experimental techniques were used to determine the structure:

*ELECTRON MICROSCOPY*

The reported resolution of this entry is 2.15 Å.

Percentile scores (ranging between 0-100) for global validation metrics of the entry are shown in the following graphic. The table shows the number of entries on which the scores are based.



Metric	Whole archive (#Entries)	EM structures (#Entries)
Clashscore	210492	15764
Ramachandran outliers	207382	16835
Sidechain outliers	206894	16415

The table below summarises the geometric issues observed across the polymeric chains and their fit to the map. The red, orange, yellow and green segments of the bar indicate the fraction of residues that contain outliers for  $\geq 3$ , 2, 1 and 0 types of geometric quality criteria respectively. A grey segment represents the fraction of residues that are not modelled. The numeric value for each fraction is indicated below the corresponding segment, with a dot representing fractions  $\leq 5\%$ . The upper red bar (where present) indicates the fraction of residues that have poor fit to the EM map (all-atom inclusion  $< 40\%$ ). The numeric value is given above the bar.

Mol	Chain	Length	Quality of chain
1	1	223	
2	2	251	
3	3	238	
4	4	17	

## 2 Entry composition

There are 5 unique types of molecules in this entry. The entry contains 5743 atoms, of which 0 are hydrogens and 0 are deuteriums.

In the tables below, the AltConf column contains the number of residues with at least one atom in alternate conformation and the Trace column contains the number of residues modelled with at most 2 atoms.

- Molecule 1 is a protein called Capsid protein VP1.

Mol	Chain	Residues	Atoms					AltConf	Trace
1	1	223	Total	C	N	O	S	0	0
			1792	1146	311	327	8		

There are 18 discrepancies between the modelled and reference sequences:

Chain	Residue	Modelled	Actual	Comment	Reference
1	80	THR	ASN	variant	UNP P08291
1	84	LYS	GLU	variant	UNP P08291
1	87	PHE	TYR	variant	UNP P08291
1	101	ARG	LEU	variant	UNP P08291
1	103	LYS	ARG	variant	UNP P08291
1	104	LEU	LYS	variant	UNP P08291
1	105	GLU	LEU	variant	UNP P08291
1	106	LEU	GLU	variant	UNP P08291
1	125	GLN	GLU	variant	UNP P08291
1	130	SER	THR	variant	UNP P08291
1	139	HIS	GLN	variant	UNP P08291
1	155	LYS	THR	variant	UNP P08291
1	264	SER	ASN	variant	UNP P08291
1	266	ILE	THR	variant	UNP P08291
1	271	SER	THR	variant	UNP P08291
1	273	THR	SER	variant	UNP P08291
1	274	ASP	ASN	variant	UNP P08291
1	276	ILE	THR	variant	UNP P08291

- Molecule 2 is a protein called Capsid protein VP2.

Mol	Chain	Residues	Atoms					AltConf	Trace
2	2	251	Total	C	N	O	S	0	0
			1949	1230	330	371	18		

There are 10 discrepancies between the modelled and reference sequences:

Chain	Residue	Modelled	Actual	Comment	Reference
2	49	ALA	GLY	variant	UNP P08291
2	142	GLU	LYS	variant	UNP P08291
2	144	SER	ALA	variant	UNP P08291
2	151	SER	ASN	variant	UNP P08291
2	159	GLN	GLU	variant	UNP P08291
2	162	GLU	THR	variant	UNP P08291
2	165	ALA	ASP	variant	UNP P08291
2	202	LEU	ILE	variant	UNP P08291
2	216	PHE	TYR	variant	UNP P08291
2	262	ASN	SER	variant	UNP P08291

- Molecule 3 is a protein called Capsid protein VP3.

Mol	Chain	Residues	Atoms					AltConf	Trace
3	3	238	Total	C	N	O	S	0	0
			1846	1175	301	355	15		

There are 10 discrepancies between the modelled and reference sequences:

Chain	Residue	Modelled	Actual	Comment	Reference
3	59	GLU	ASP	variant	UNP P08291
3	60	ASP	ASN	variant	UNP P08291
3	63	SER	ASN	variant	UNP P08291
3	64	SER	GLY	variant	UNP P08291
3	79	GLY	ARG	variant	UNP P08291
3	80	LYS	ARG	variant	UNP P08291
3	146	LYS	ARG	variant	UNP P08291
3	199	VAL	ILE	variant	UNP P08291
3	207	SER	THR	variant	UNP P08291
3	235	THR	ASN	variant	UNP P08291

- Molecule 4 is a protein called Capsid protein VP4.

Mol	Chain	Residues	Atoms				AltConf	Trace
4	4	17	Total	C	N	O	0	0
			138	84	25	29		

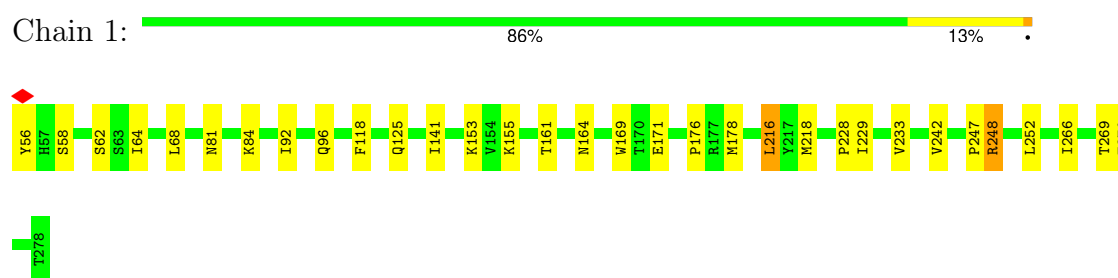
- Molecule 5 is PALMITIC ACID (three-letter code: PLM) (formula: C<sub>16</sub>H<sub>32</sub>O<sub>2</sub>) (labeled as "Ligand of Interest" by depositor).



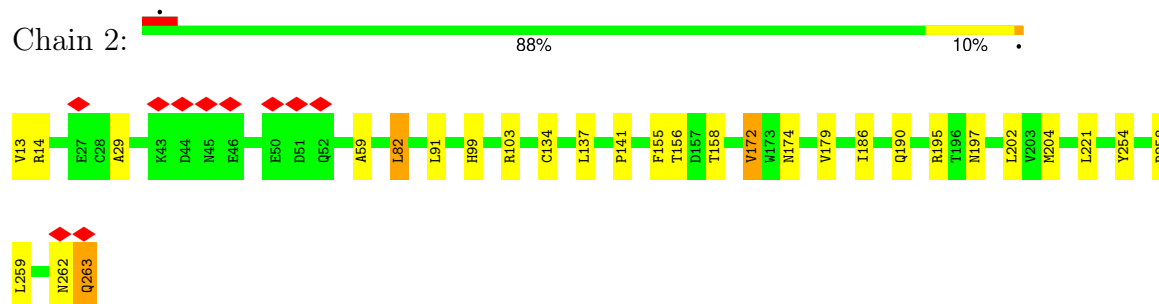
### 3 Residue-property plots [i](#)

These plots are drawn for all protein, RNA, DNA and oligosaccharide chains in the entry. The first graphic for a chain summarises the proportions of the various outlier classes displayed in the second graphic. The second graphic shows the sequence view annotated by issues in geometry and atom inclusion in map density. Residues are color-coded according to the number of geometric quality criteria for which they contain at least one outlier: green = 0, yellow = 1, orange = 2 and red = 3 or more. A red diamond above a residue indicates a poor fit to the EM map for this residue (all-atom inclusion < 40%). Stretches of 2 or more consecutive residues without any outlier are shown as a green connector. Residues present in the sample, but not in the model, are shown in grey.

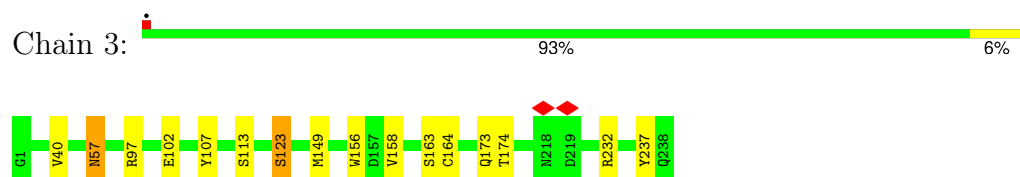
#### • Molecule 1: Capsid protein VP1



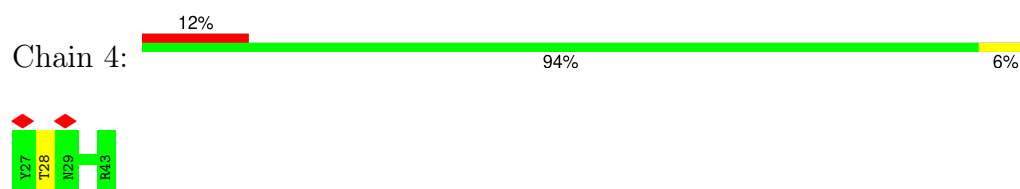
#### • Molecule 2: Capsid protein VP2



#### • Molecule 3: Capsid protein VP3



#### • Molecule 4: Capsid protein VP4



## 4 Experimental information

Property	Value	Source
EM reconstruction method	SINGLE PARTICLE	Depositor
Imposed symmetry	POINT, Not provided	
Number of particles used	86988	Depositor
Resolution determination method	FSC 0.143 CUT-OFF	Depositor
CTF correction method	PHASE FLIPPING AND AMPLITUDE CORRECTION	Depositor
Microscope	FEI TITAN KRIOS	Depositor
Voltage (kV)	300	Depositor
Electron dose ( $e^-/\text{\AA}^2$ )	63.368	Depositor
Minimum defocus (nm)	100	Depositor
Maximum defocus (nm)	2800	Depositor
Magnification	105000	Depositor
Image detector	GATAN K3 BIOQUANTUM (6k x 4k)	Depositor
Maximum map value	1.261	Depositor
Minimum map value	-0.115	Depositor
Average map value	0.091	Depositor
Map value standard deviation	0.143	Depositor
Recommended contour level	0.5	Depositor
Map size (Å)	423.99997, 423.99997, 423.99997	wwPDB
Map dimensions	400, 400, 400	wwPDB
Map angles (°)	90.0, 90.0, 90.0	wwPDB
Pixel spacing (Å)	1.06, 1.06, 1.06	Depositor

## 5 Model quality [i](#)

### 5.1 Standard geometry [i](#)

Bond lengths and bond angles in the following residue types are not validated in this section: PLM

The Z score for a bond length (or angle) is the number of standard deviations the observed value is removed from the expected value. A bond length (or angle) with  $|Z| > 5$  is considered an outlier worth inspection. RMSZ is the root-mean-square of all Z scores of the bond lengths (or angles).

Mol	Chain	Bond lengths		Bond angles	
		RMSZ	$\# Z  > 5$	RMSZ	$\# Z  > 5$
1	1	0.28	0/1845	0.49	0/2515
2	2	0.29	0/1999	0.47	0/2730
3	3	0.29	0/1894	0.47	0/2588
4	4	0.37	0/140	0.57	0/189
All	All	0.29	0/5878	0.48	0/8022

Chiral center outliers are detected by calculating the chiral volume of a chiral center and verifying if the center is modelled as a planar moiety or with the opposite hand. A planarity outlier is detected by checking planarity of atoms in a peptide group, atoms in a mainchain group or atoms of a sidechain that are expected to be planar.

Mol	Chain	#Chirality outliers	#Planarity outliers
1	1	0	1

There are no bond length outliers.

There are no bond angle outliers.

There are no chirality outliers.

All (1) planarity outliers are listed below:

Mol	Chain	Res	Type	Group
1	1	248	ARG	Sidechain

### 5.2 Too-close contacts [i](#)

In the following table, the Non-H and H(model) columns list the number of non-hydrogen atoms and hydrogen atoms in the chain respectively. The H(added) column lists the number of hydrogen atoms added and optimized by MolProbity. The Clashes column lists the number of clashes within the asymmetric unit, whereas Symm-Clashes lists symmetry-related clashes.



Mol	Chain	Non-H	H(model)	H(added)	Clashes	Symm-Clashes
1	1	1792	0	1757	20	0
2	2	1949	0	1873	15	0
3	3	1846	0	1785	11	0
4	4	138	0	123	0	0
5	1	18	0	31	0	0
All	All	5743	0	5569	38	0

The all-atom clashscore is defined as the number of clashes found per 1000 atoms (including hydrogen atoms). The all-atom clashscore for this structure is 3.

All (38) close contacts within the same asymmetric unit are listed below, sorted by their clash magnitude.

Atom-1	Atom-2	Interatomic distance (Å)	Clash overlap (Å)
1:1:96:GLN:HG2	3:3:237:TYR:O	1.84	0.78
1:1:81:ASN:ND2	1:1:229:ILE:HB	2.00	0.77
2:2:156:THR:HG22	2:2:158:THR:H	1.56	0.70
2:2:14:ARG:HH12	2:2:29:ALA:HB3	1.64	0.61
3:3:173:GLN:HG2	3:3:174:THR:HG23	1.86	0.57
2:2:155:PHE:HB3	2:2:172:VAL:HG13	1.88	0.56
2:2:204:MET:HE2	2:2:221:LEU:HD21	1.88	0.56
1:1:68:LEU:HD12	1:1:242:VAL:HG11	1.88	0.56
2:2:134:CYS:HB2	2:2:141:PRO:HD3	1.88	0.55
1:1:247:PRO:HB2	2:2:186:ILE:HD11	1.90	0.54
2:2:262:ASN:OD1	2:2:263:GLN:N	2.41	0.54
1:1:141:ILE:HG12	1:1:218:MET:HG2	1.89	0.53
2:2:195:ARG:NH2	3:3:158:VAL:O	2.41	0.53
3:3:57:ASN:HD22	3:3:57:ASN:H	1.58	0.52
3:3:97:ARG:NH1	3:3:102:GLU:OE2	2.40	0.52
1:1:161:THR:OG1	1:1:164:ASN:O	2.33	0.47
1:1:252:LEU:HG	1:1:266:ILE:HD11	1.96	0.47
1:1:96:GLN:CG	3:3:237:TYR:O	2.58	0.46
1:1:62:SER:HA	3:3:107:TYR:OH	2.16	0.46
1:1:118:PHE:HB2	1:1:176:PRO:HG2	1.97	0.46
1:1:92:ILE:HD11	1:1:216:LEU:HD13	1.97	0.45
2:2:99:HIS:CG	2:2:254:TYR:HB3	2.51	0.45
1:1:81:ASN:HD22	1:1:229:ILE:HB	1.81	0.44
2:2:190:GLN:HB2	2:2:202:LEU:HD21	2.00	0.44
1:1:81:ASN:ND2	1:1:229:ILE:H	2.16	0.43
2:2:195:ARG:NH1	3:3:123:SER:O	2.49	0.43
1:1:169:TRP:CH2	1:1:171:GLU:HA	2.54	0.43
1:1:155:LYS:HA	1:1:155:LYS:HD3	1.76	0.42
1:1:64:ILE:HD11	3:3:40:VAL:HG12	2.02	0.42

*Continued on next page...*

*Continued from previous page...*

Atom-1	Atom-2	Interatomic distance (Å)	Clash overlap (Å)
1:1:84:LYS:HZ1	1:1:155:LYS:H	1.67	0.42
2:2:174:ASN:HA	2:2:179:VAL:O	2.20	0.42
2:2:59:ALA:HB1	2:2:91:LEU:HD12	2.02	0.42
1:1:216:LEU:HD12	1:1:216:LEU:HA	1.92	0.42
1:1:269:THR:HG22	3:3:97:ARG:HB2	2.02	0.42
2:2:82:LEU:HA	2:2:82:LEU:HD13	1.82	0.41
2:2:263:GLN:H	2:2:263:GLN:HG3	1.42	0.41
1:1:125:GLN:HB2	1:1:228:PRO:HB2	2.03	0.40
3:3:156:TRP:CD1	3:3:164:CYS:HB2	2.56	0.40

There are no symmetry-related clashes.

## 5.3 Torsion angles [i](#)

### 5.3.1 Protein backbone [i](#)

In the following table, the Percentiles column shows the percent Ramachandran outliers of the chain as a percentile score with respect to all PDB entries followed by that with respect to all EM entries.

The Analysed column shows the number of residues for which the backbone conformation was analysed, and the total number of residues.

Mol	Chain	Analysed	Favoured	Allowed	Outliers	Percentiles	
1	1	221/223 (99%)	217 (98%)	4 (2%)	0	100	100
2	2	249/251 (99%)	243 (98%)	6 (2%)	0	100	100
3	3	236/238 (99%)	231 (98%)	5 (2%)	0	100	100
4	4	15/17 (88%)	14 (93%)	1 (7%)	0	100	100
All	All	721/729 (99%)	705 (98%)	16 (2%)	0	100	100

There are no Ramachandran outliers to report.

### 5.3.2 Protein sidechains [i](#)

In the following table, the Percentiles column shows the percent sidechain outliers of the chain as a percentile score with respect to all PDB entries followed by that with respect to all EM entries.

The Analysed column shows the number of residues for which the sidechain conformation was analysed, and the total number of residues.

Mol	Chain	Analysed	Rotameric	Outliers	Percentiles	
1	1	199/199 (100%)	191 (96%)	8 (4%)	27	25
2	2	216/216 (100%)	207 (96%)	9 (4%)	25	24
3	3	210/210 (100%)	204 (97%)	6 (3%)	37	38
4	4	14/14 (100%)	13 (93%)	1 (7%)	12	8
All	All	639/639 (100%)	615 (96%)	24 (4%)	30	27

All (24) residues with a non-rotameric sidechain are listed below:

Mol	Chain	Res	Type
1	1	56	TYR
1	1	58	SER
1	1	153	LYS
1	1	178	MET
1	1	216	LEU
1	1	233	VAL
1	1	248	ARG
1	1	270	THR
2	2	13	VAL
2	2	82	LEU
2	2	103	ARG
2	2	137	LEU
2	2	172	VAL
2	2	197	ASN
2	2	258	ARG
2	2	259	LEU
2	2	263	GLN
3	3	57	ASN
3	3	113	SER
3	3	123	SER
3	3	149	MET
3	3	163	SER
3	3	232	ARG
4	4	28	THR

Sometimes sidechains can be flipped to improve hydrogen bonding and reduce clashes. All (2) such sidechains are listed below:

Mol	Chain	Res	Type
3	3	57	ASN
3	3	61	ASN

### 5.3.3 RNA ⓘ

There are no RNA molecules in this entry.

## 5.4 Non-standard residues in protein, DNA, RNA chains ⓘ

There are no non-standard protein/DNA/RNA residues in this entry.

## 5.5 Carbohydrates ⓘ

There are no oligosaccharides in this entry.

## 5.6 Ligand geometry ⓘ

1 ligand is modelled in this entry.

In the following table, the Counts columns list the number of bonds (or angles) for which Mogul statistics could be retrieved, the number of bonds (or angles) that are observed in the model and the number of bonds (or angles) that are defined in the Chemical Component Dictionary. The Link column lists molecule types, if any, to which the group is linked. The Z score for a bond length (or angle) is the number of standard deviations the observed value is removed from the expected value. A bond length (or angle) with  $|Z| > 2$  is considered an outlier worth inspection. RMSZ is the root-mean-square of all Z scores of the bond lengths (or angles).

Mol	Type	Chain	Res	Link	Bond lengths			Bond angles		
					Counts	RMSZ	$\# Z  > 2$	Counts	RMSZ	$\# Z  > 2$
5	PLM	1	301	-	17,17,17	0.90	1 (5%)	17,17,17	0.73	2 (11%)

In the following table, the Chirals column lists the number of chiral outliers, the number of chiral centers analysed, the number of these observed in the model and the number defined in the Chemical Component Dictionary. Similar counts are reported in the Torsion and Rings columns. '-' means no outliers of that kind were identified.

Mol	Type	Chain	Res	Link	Chirals	Torsions	Rings
5	PLM	1	301	-	-	5/15/15/15	-

All (1) bond length outliers are listed below:

Mol	Chain	Res	Type	Atoms	Z	Observed(Å)	Ideal(Å)
5	1	301	PLM	C2-C1	2.93	1.57	1.50

All (2) bond angle outliers are listed below:

Mol	Chain	Res	Type	Atoms	Z	Observed(°)	Ideal(°)
5	1	301	PLM	O1-C1-O2	2.11	128.77	123.33
5	1	301	PLM	O2-C1-C2	-2.03	116.67	123.09

There are no chirality outliers.

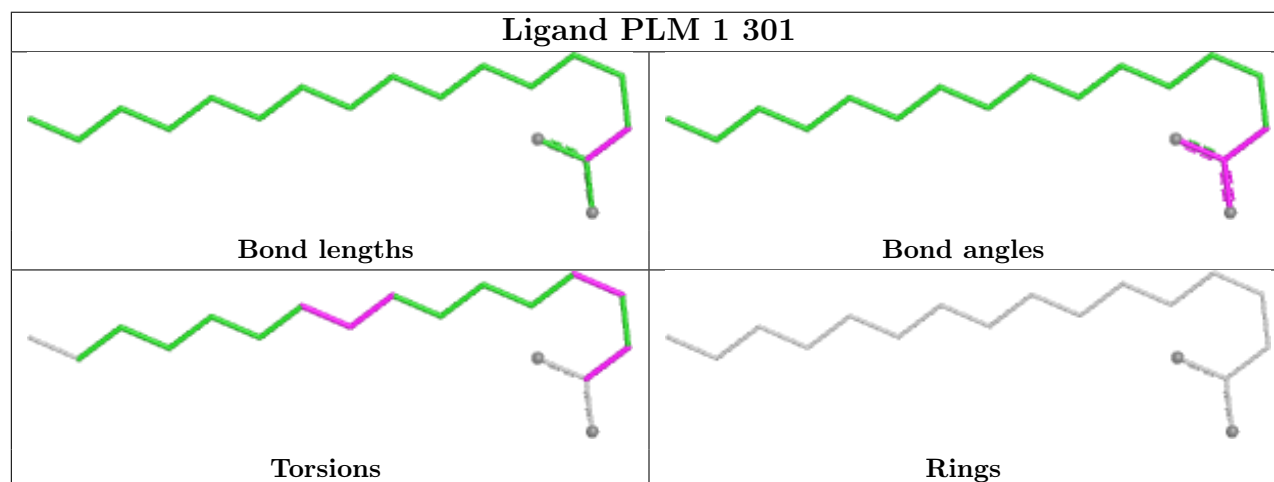
All (5) torsion outliers are listed below:

Mol	Chain	Res	Type	Atoms
5	1	301	PLM	C8-C9-CA-CB
5	1	301	PLM	C7-C8-C9-CA
5	1	301	PLM	C2-C3-C4-C5
5	1	301	PLM	O1-C1-C2-C3
5	1	301	PLM	O2-C1-C2-C3

There are no ring outliers.

No monomer is involved in short contacts.

The following is a two-dimensional graphical depiction of Mogul quality analysis of bond lengths, bond angles, torsion angles, and ring geometry for all instances of the Ligand of Interest. In addition, ligands with molecular weight > 250 and outliers as shown on the validation Tables will also be included. For torsion angles, if less than 5% of the Mogul distribution of torsion angles is within 10 degrees of the torsion angle in question, then that torsion angle is considered an outlier. Any bond that is central to one or more torsion angles identified as an outlier by Mogul will be highlighted in the graph. For rings, the root-mean-square deviation (RMSD) between the ring in question and similar rings identified by Mogul is calculated over all ring torsion angles. If the average RMSD is greater than 60 degrees and the minimal RMSD between the ring in question and any Mogul-identified rings is also greater than 60 degrees, then that ring is considered an outlier. The outliers are highlighted in purple. The color gray indicates Mogul did not find sufficient equivalents in the CSD to analyse the geometry.



## 5.7 Other polymers [i](#)

There are no such residues in this entry.

## 5.8 Polymer linkage issues [i](#)

There are no chain breaks in this entry.

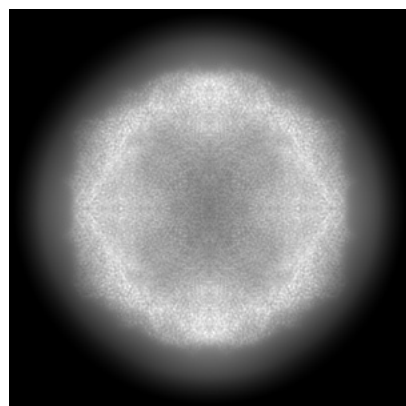
## 6 Map visualisation [i](#)

This section contains visualisations of the EMDB entry EMD-50497. These allow visual inspection of the internal detail of the map and identification of artifacts.

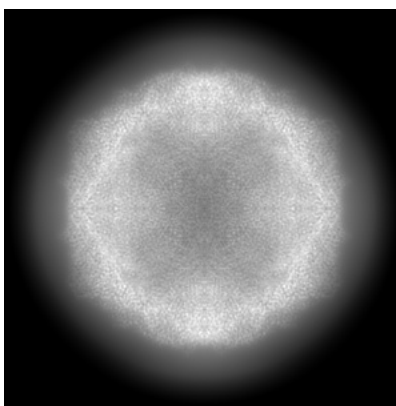
Images derived from a raw map, generated by summing the deposited half-maps, are presented below the corresponding image components of the primary map to allow further visual inspection and comparison with those of the primary map.

### 6.1 Orthogonal projections [i](#)

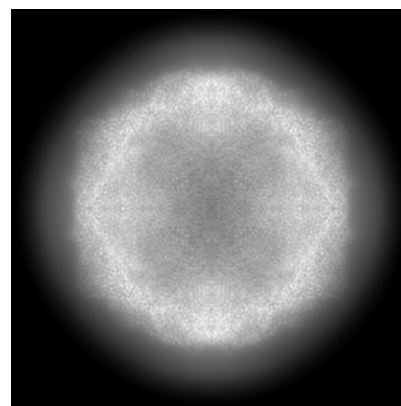
#### 6.1.1 Primary map



X

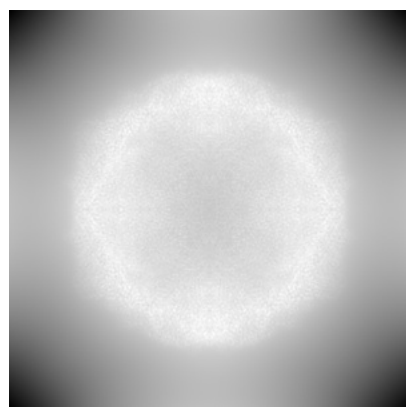


Y

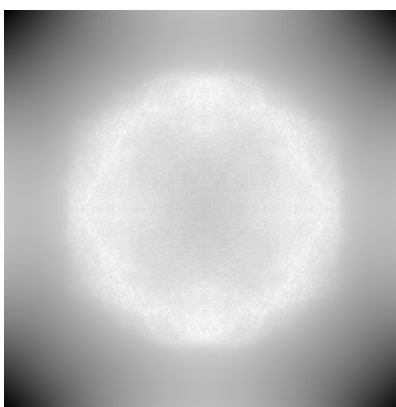


Z

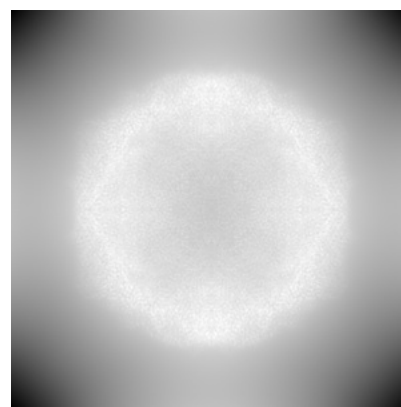
#### 6.1.2 Raw map



X



Y

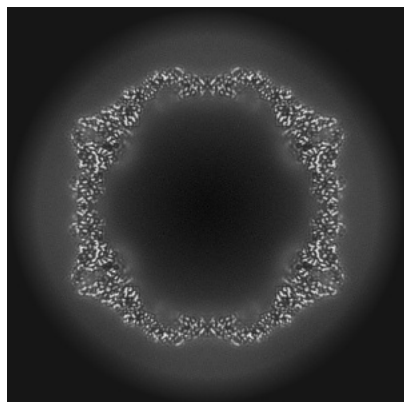


Z

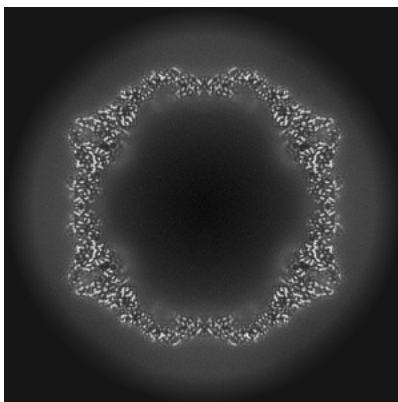
The images above show the map projected in three orthogonal directions.

## 6.2 Central slices [i](#)

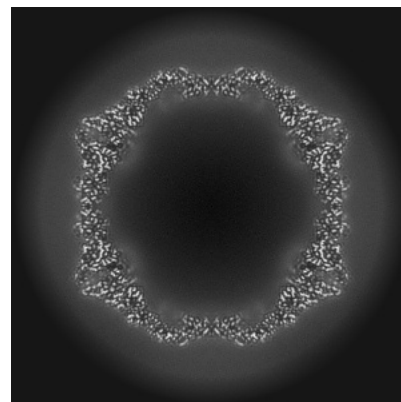
### 6.2.1 Primary map



X Index: 200

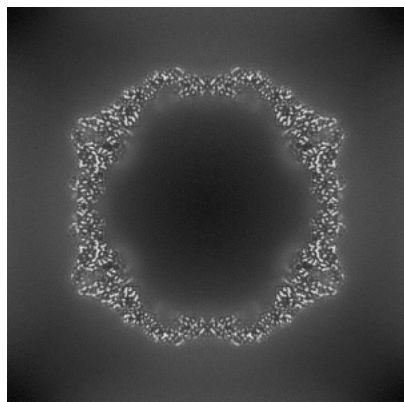


Y Index: 200

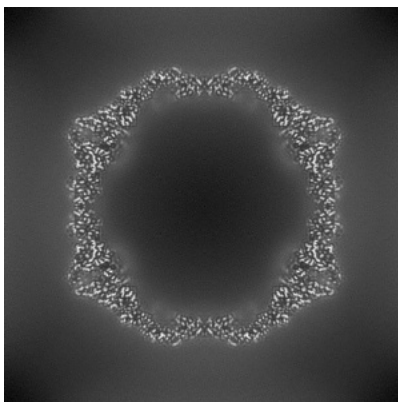


Z Index: 200

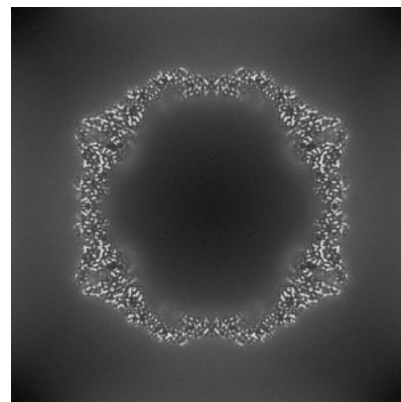
### 6.2.2 Raw map



X Index: 200



Y Index: 200



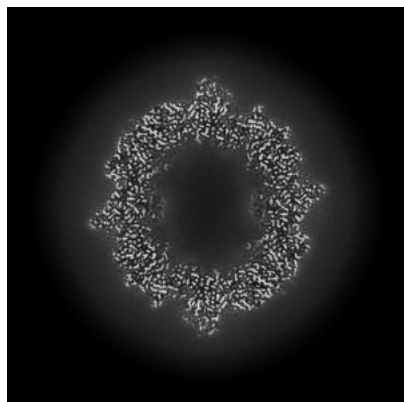
Z Index: 200

The images above show central slices of the map in three orthogonal directions.

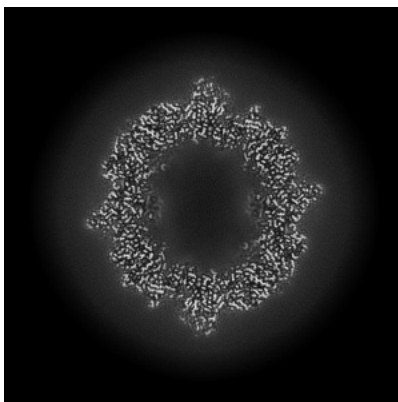


## 6.3 Largest variance slices [i](#)

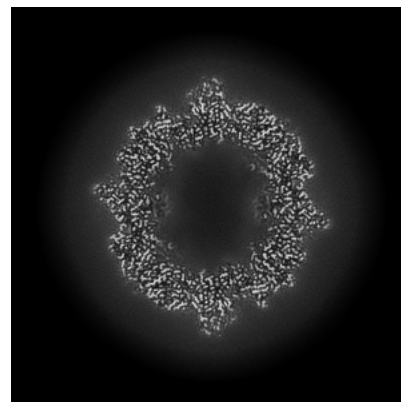
### 6.3.1 Primary map



X Index: 289

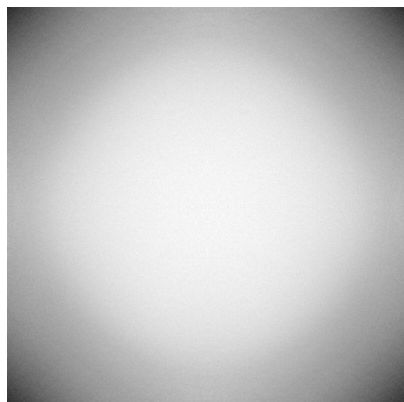


Y Index: 289

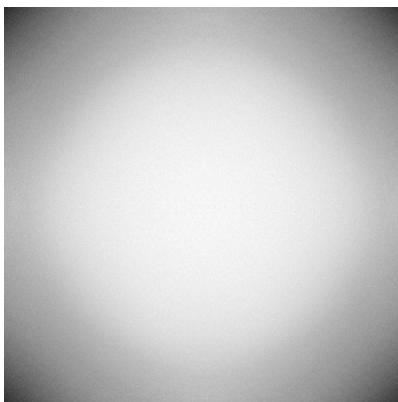


Z Index: 111

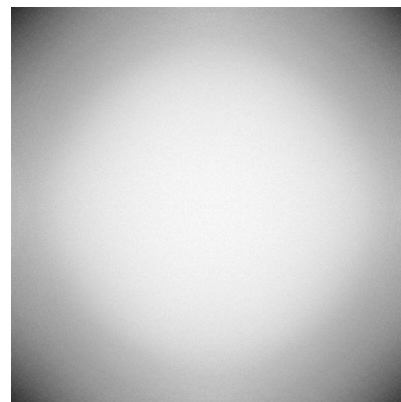
### 6.3.2 Raw map



X Index: 0



Y Index: 0

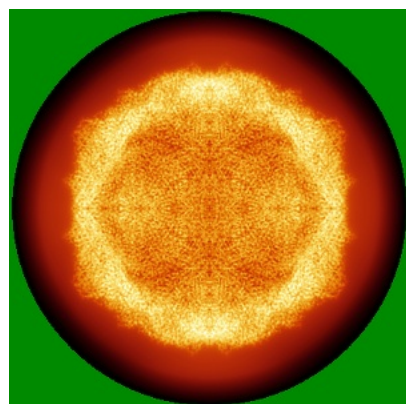


Z Index: 0

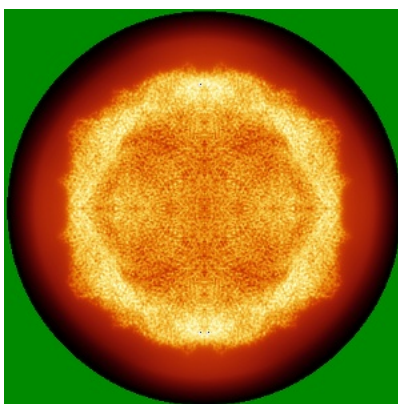
The images above show the largest variance slices of the map in three orthogonal directions.

## 6.4 Orthogonal standard-deviation projections (False-color) [i](#)

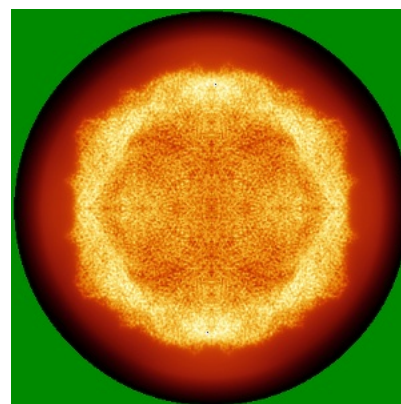
### 6.4.1 Primary map



X

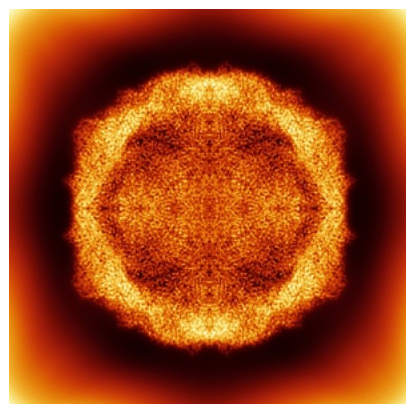


Y

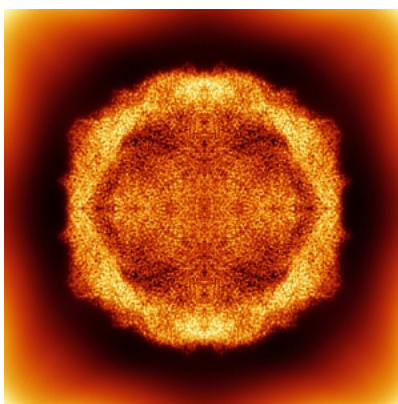


Z

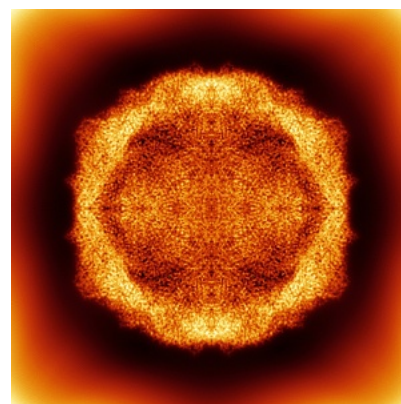
### 6.4.2 Raw map



X



Y

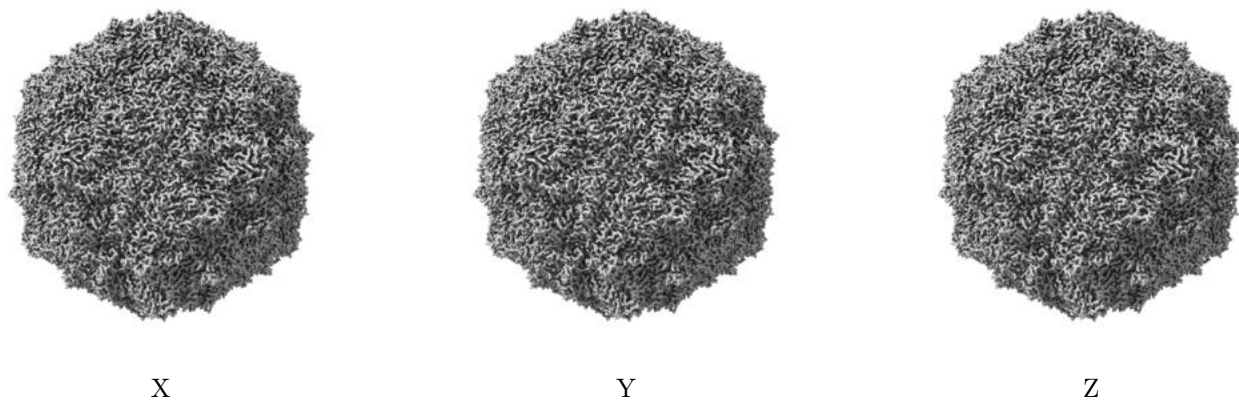


Z

The images above show the map standard deviation projections with false color in three orthogonal directions. Minimum values are shown in green, max in blue, and dark to light orange shades represent small to large values respectively.

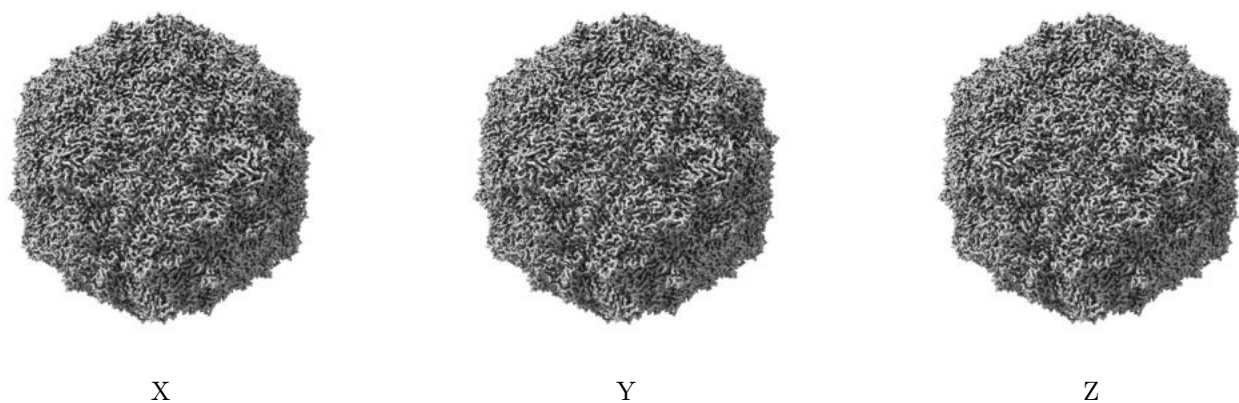
## 6.5 Orthogonal surface views [i](#)

### 6.5.1 Primary map



The images above show the 3D surface view of the map at the recommended contour level 0.5. These images, in conjunction with the slice images, may facilitate assessment of whether an appropriate contour level has been provided.

### 6.5.2 Raw map



These images show the 3D surface of the raw map. The raw map's contour level was selected so that its surface encloses the same volume as the primary map does at its recommended contour level.

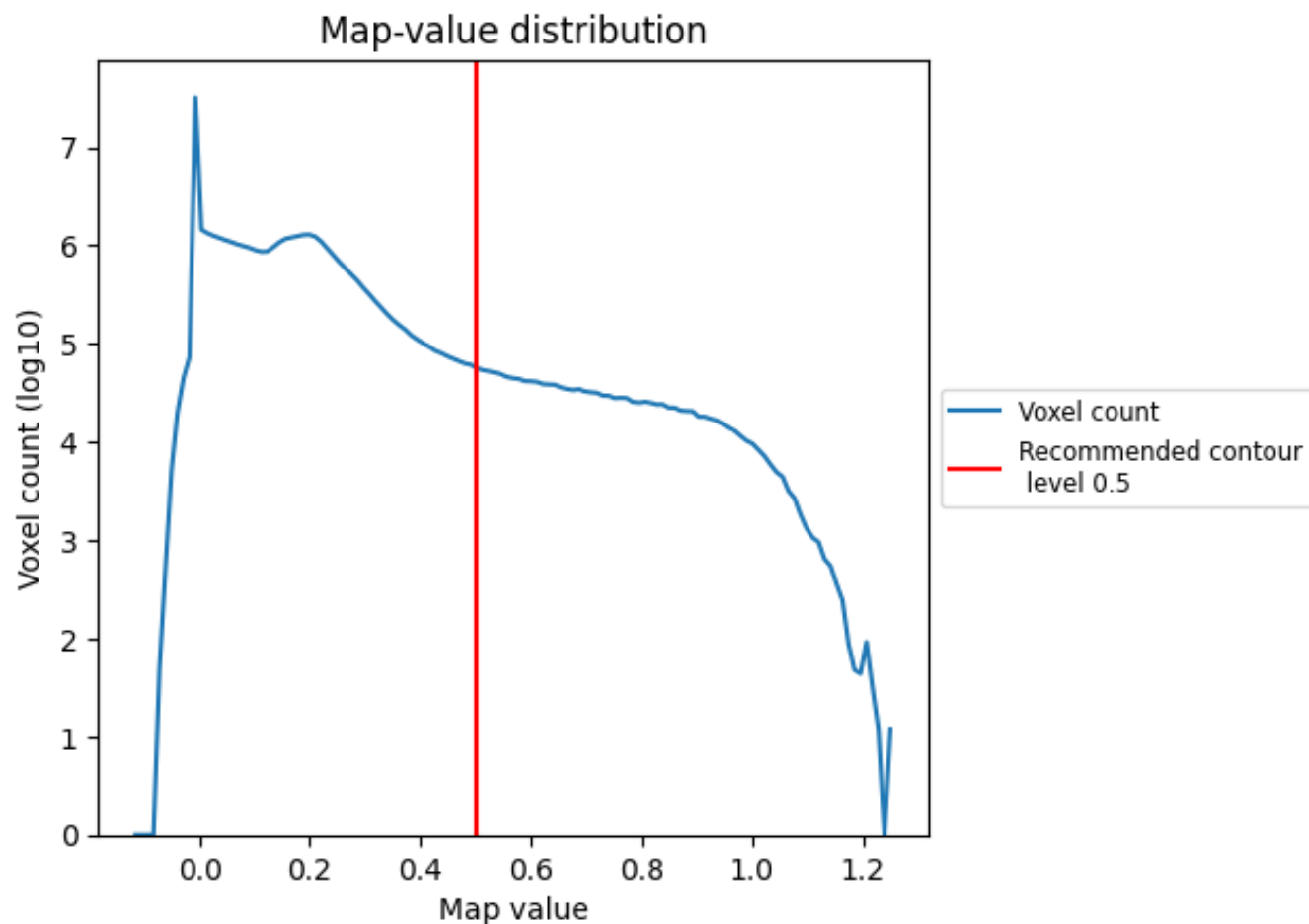
## 6.6 Mask visualisation [i](#)

This section was not generated. No masks/segmentation were deposited.

## 7 Map analysis [i](#)

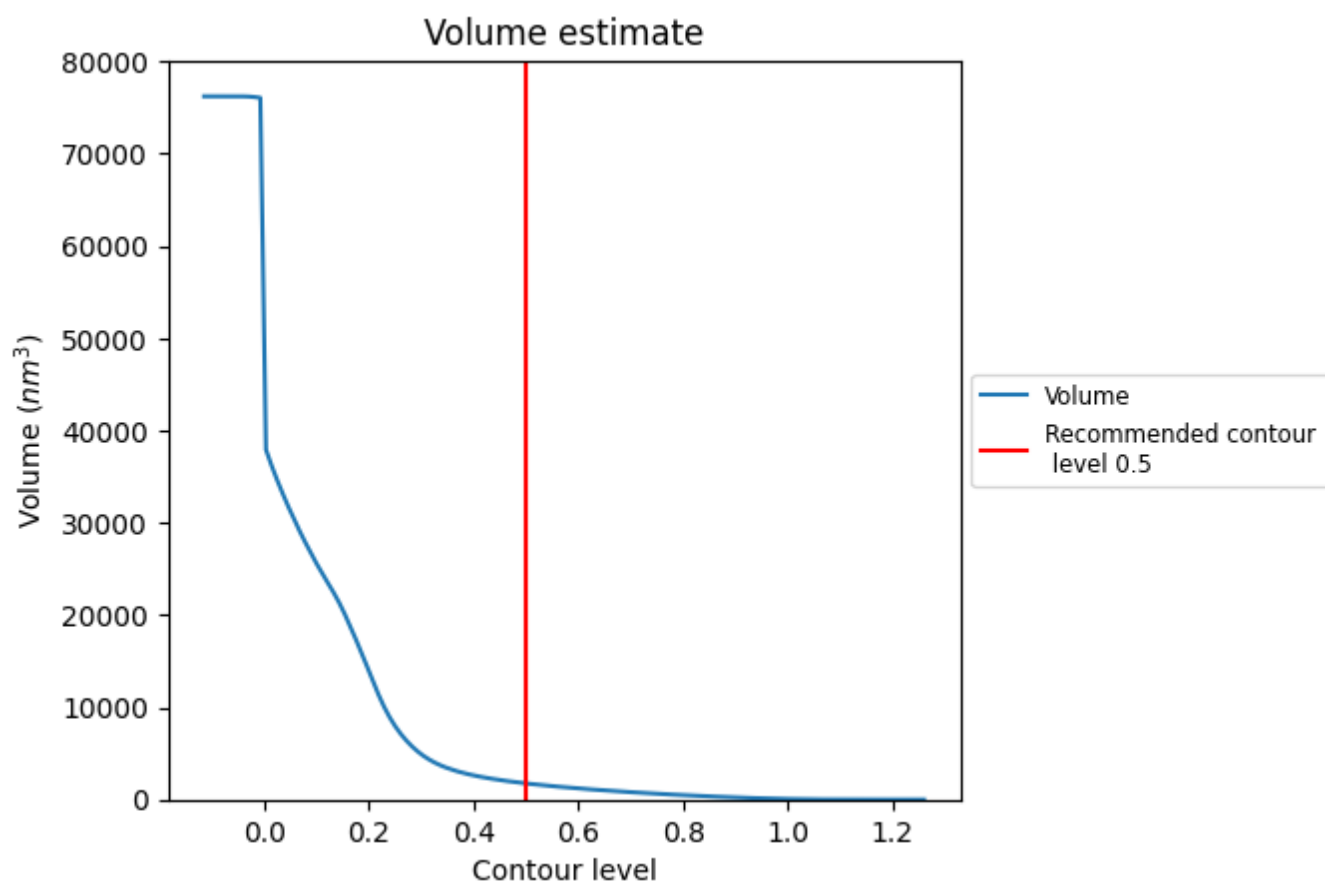
This section contains the results of statistical analysis of the map.

### 7.1 Map-value distribution [i](#)



The map-value distribution is plotted in 128 intervals along the x-axis. The y-axis is logarithmic. A spike in this graph at zero usually indicates that the volume has been masked.

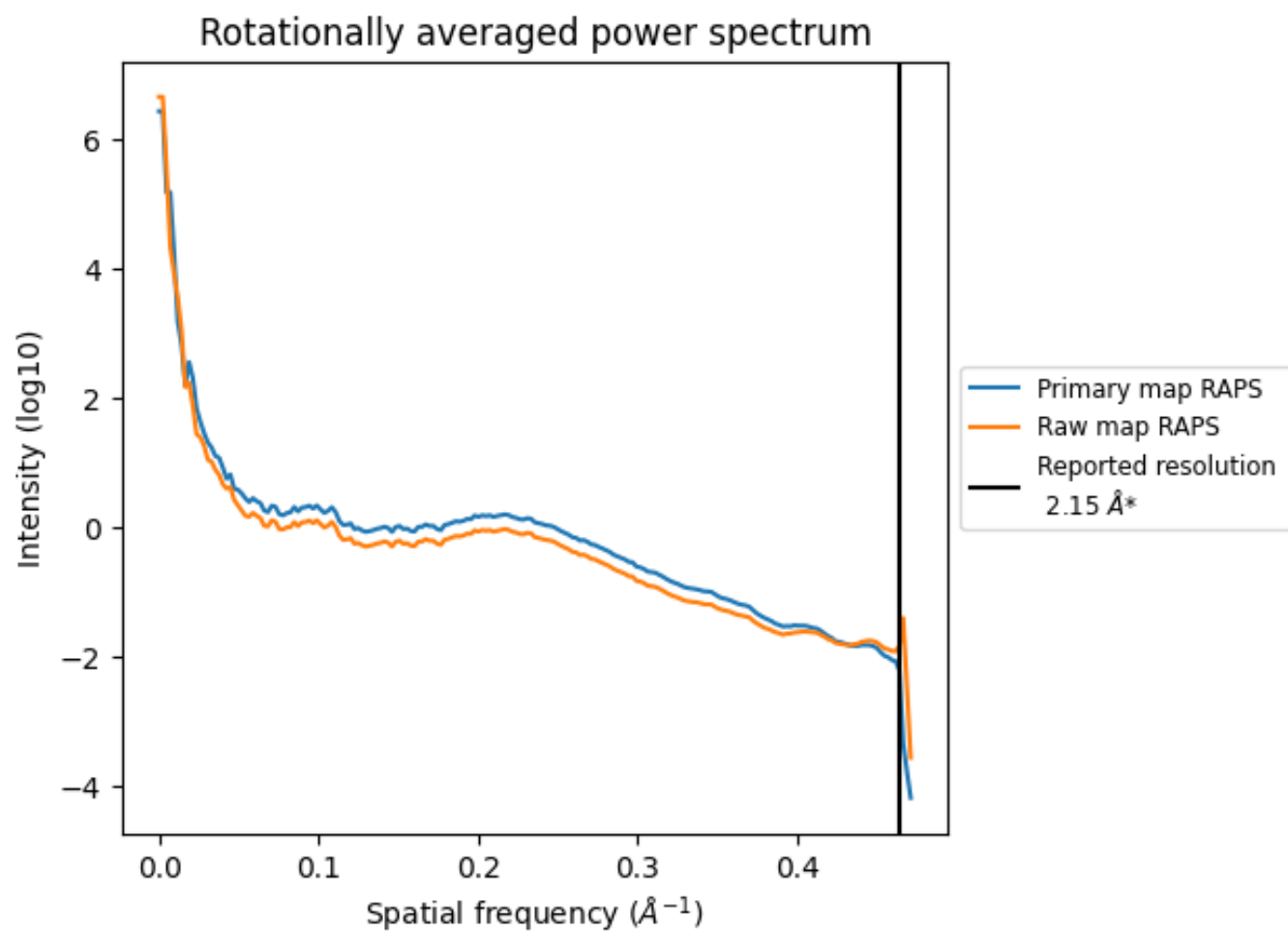
## 7.2 Volume estimate [i](#)



The volume at the recommended contour level is 1752 nm<sup>3</sup>; this corresponds to an approximate mass of 1583 kDa.

The volume estimate graph shows how the enclosed volume varies with the contour level. The recommended contour level is shown as a vertical line and the intersection between the line and the curve gives the volume of the enclosed surface at the given level.

### 7.3 Rotationally averaged power spectrum ⓘ



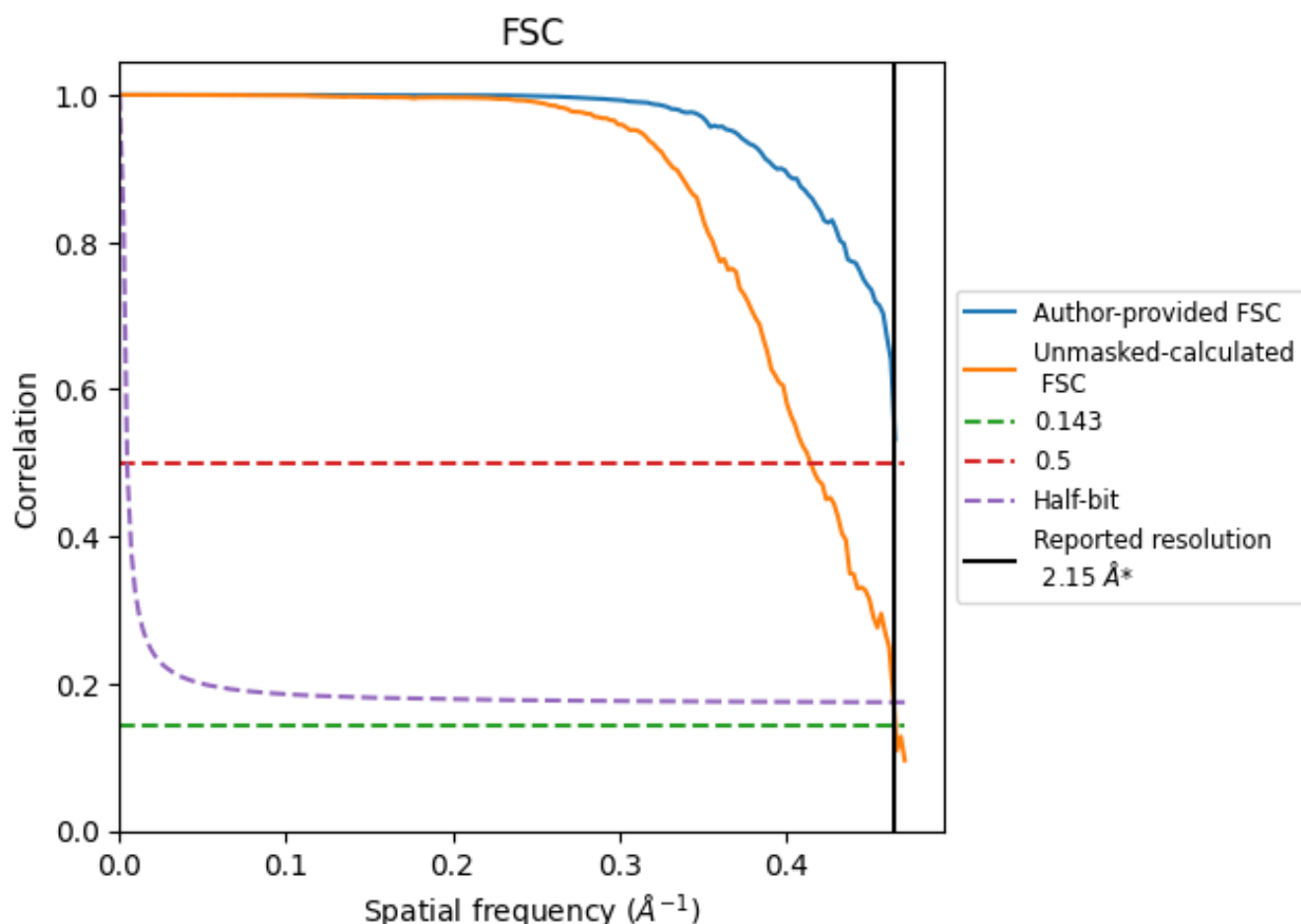
\*Reported resolution corresponds to spatial frequency of 0.465 Å<sup>-1</sup>



## 8 Fourier-Shell correlation [i](#)

Fourier-Shell Correlation (FSC) is the most commonly used method to estimate the resolution of single-particle and subtomogram-averaged maps. The shape of the curve depends on the imposed symmetry, mask and whether or not the two 3D reconstructions used were processed from a common reference. The reported resolution is shown as a black line. A curve is displayed for the half-bit criterion in addition to lines showing the 0.143 gold standard cut-off and 0.5 cut-off.

### 8.1 FSC [i](#)



\*Reported resolution corresponds to spatial frequency of 0.465 Å<sup>-1</sup>

## 8.2 Resolution estimates [i](#)

Resolution estimate (Å)	Estimation criterion (FSC cut-off)		
	0.143	0.5	Half-bit
Reported by author	2.15	-	-
Author-provided FSC curve	-	-	-
Unmasked-calculated*	2.15	2.41	2.15

\*Resolution estimate based on FSC curve calculated by comparison of deposited half-maps.

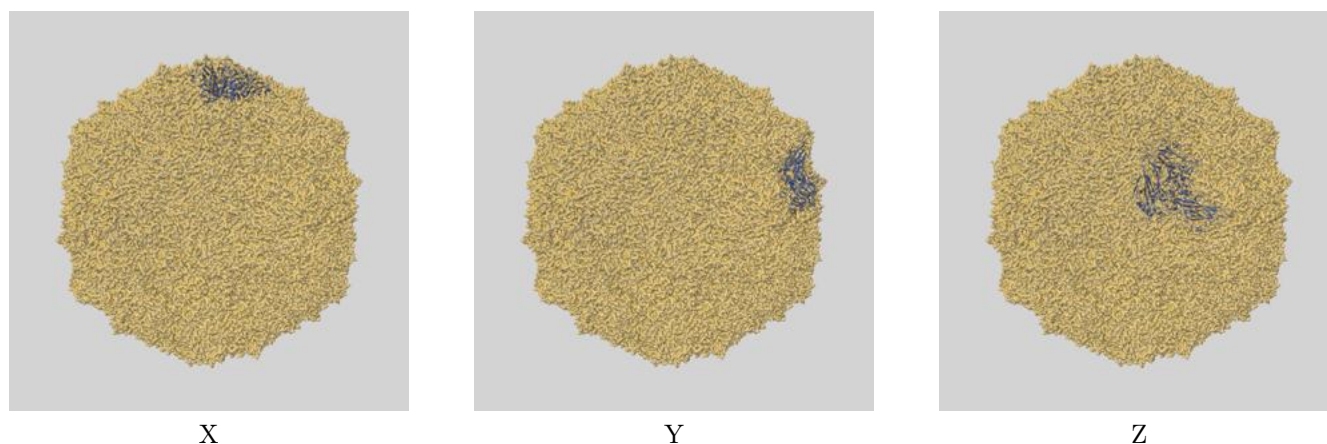


## 9 Map-model fit [i](#)

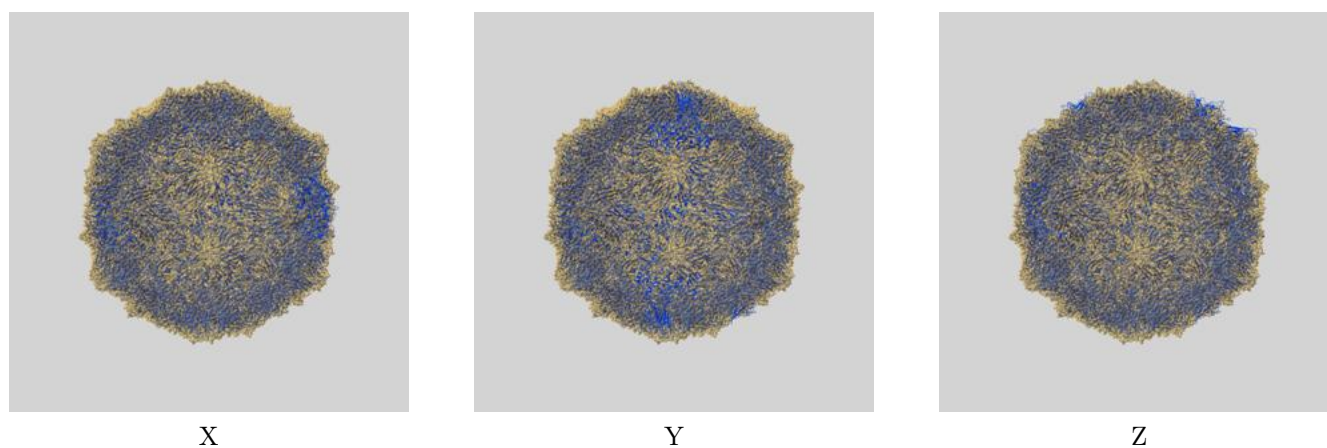
This section contains information regarding the fit between EMDB map EMD-50497 and PDB model 9FJC. Per-residue inclusion information can be found in section 3 on page 6.

### 9.1 Map-model overlays

#### 9.1.1 Map-model overlay [i](#)

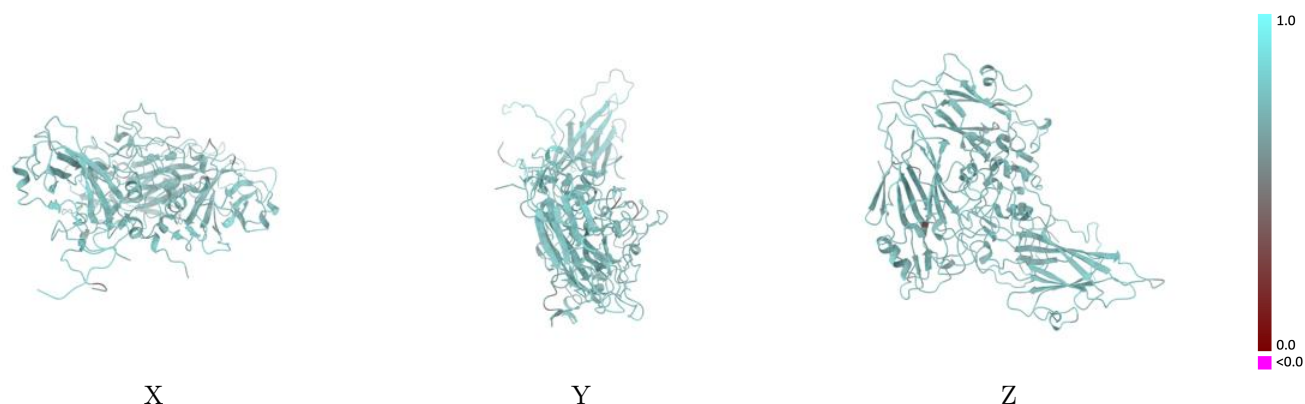


#### 9.1.2 Map-model assembly overlay [i](#)



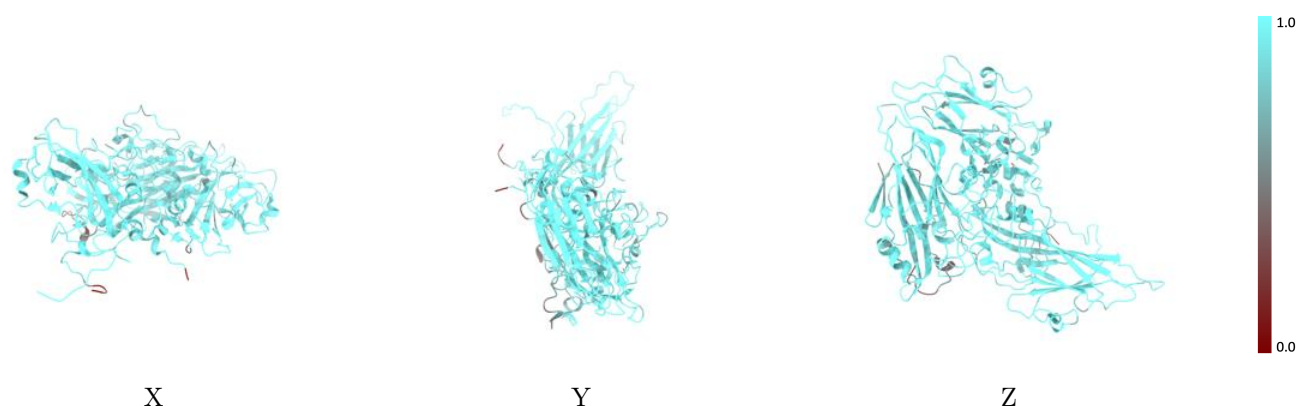
The images above show the 3D surface view of the map at the recommended contour level 0.5 at 50% transparency in yellow overlaid with a ribbon representation of the model coloured in blue. These images allow for the visual assessment of the quality of fit between the atomic model and the map.

## 9.2 Q-score mapped to coordinate model [i](#)



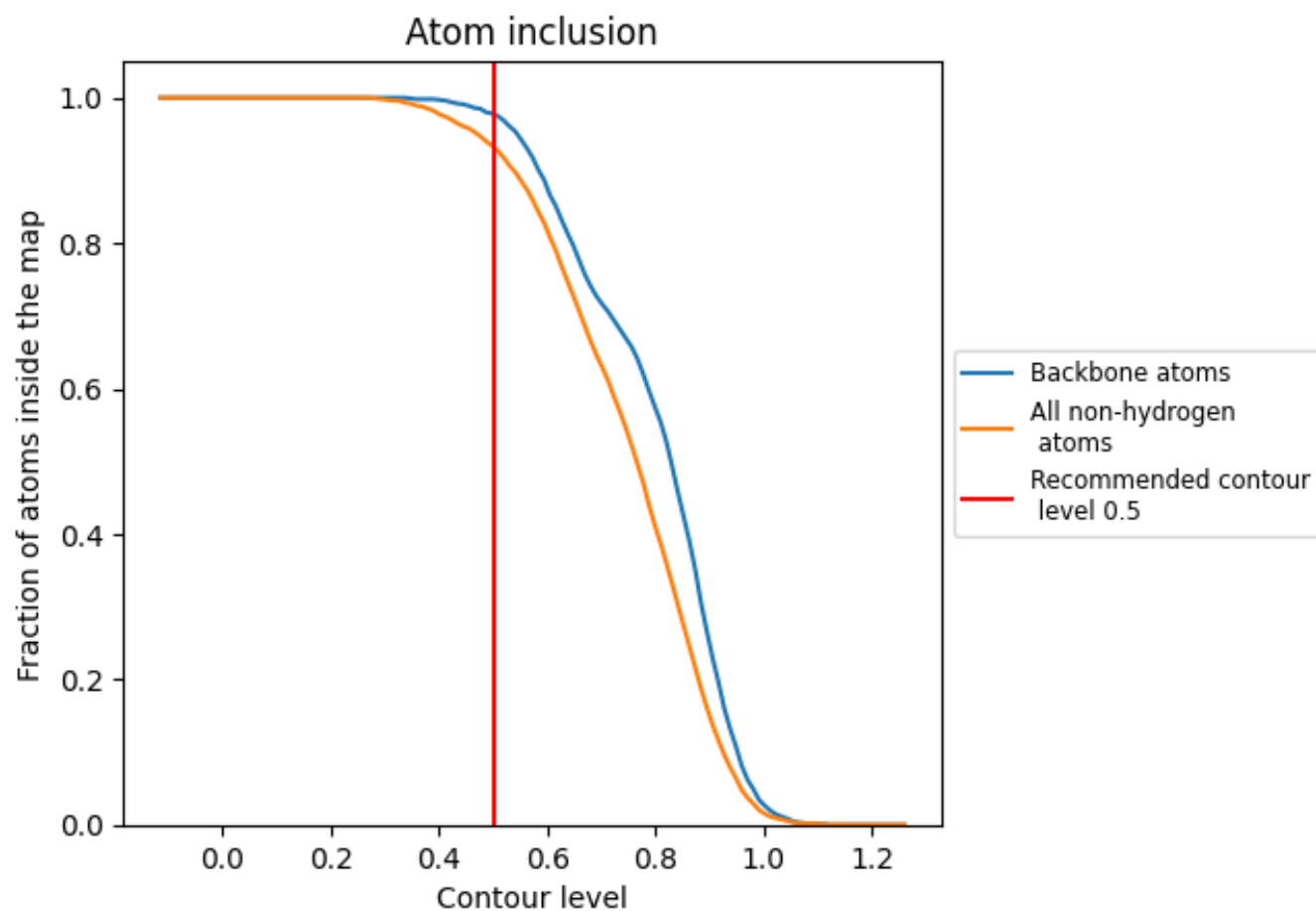
The images above show the model with each residue coloured according to its Q-score. This shows their resolvability in the map with higher Q-score values reflecting better resolvability. Please note: Q-score is calculating the resolvability of atoms, and thus high values are only expected at resolutions at which atoms can be resolved. Low Q-score values may therefore be expected for many entries.

## 9.3 Atom inclusion mapped to coordinate model [i](#)



The images above show the model with each residue coloured according to its atom inclusion. This shows to what extent they are inside the map at the recommended contour level (0.5).

## 9.4 Atom inclusion [i](#)



At the recommended contour level, 98% of all backbone atoms, 93% of all non-hydrogen atoms, are inside the map.

9.5 Map-model fit summary ⓘ

The table lists the average atom inclusion at the recommended contour level (0.5) and Q-score for the entire model and for each chain.

Chain	Atom inclusion	Q-score
All	<div></div> 0.9330	<div></div> 0.6870
1	<div></div> 0.9590	<div></div> 0.6910
2	<div></div> 0.9070	<div></div> 0.6820
3	<div></div> 0.9490	<div></div> 0.6920
4	<div></div> 0.7370	<div></div> 0.6600

