



Full wwPDB X-ray Structure Validation Report ⓘ

Jun 12, 2024 – 06:04 PM EDT

PDB ID : 1FL3
Title : CRYSTAL STRUCTURE OF THE BLUE FLUORESCENT ANTIBODY
(19G2) IN COMPLEX WITH STILBENE HAPTEN AT 277K
Authors : Stevens, R.C.; Beuscher IV, A.E.
Deposited on : 2000-08-11
Resolution : 2.45 Å(reported)

This is a Full wwPDB X-ray Structure Validation Report for a publicly released PDB entry.

We welcome your comments at validation@mail.wwpdb.org

A user guide is available at

<https://www.wwpdb.org/validation/2017/XrayValidationReportHelp>

with specific help available everywhere you see the ⓘ symbol.

The types of validation reports are described at

<http://www.wwpdb.org/validation/2017/FAQs#types>.

The following versions of software and data (see [references ⓘ](#)) were used in the production of this report:

MolProbity	:	4.02b-467
Mogul	:	1.8.5 (274361), CSD as541be (2020)
Xtriage (Phenix)	:	1.13
EDS	:	2.36.2
buster-report	:	1.1.7 (2018)
Percentile statistics	:	20191225.v01 (using entries in the PDB archive December 25th 2019)
Refmac	:	5.8.0158
CCP4	:	7.0.044 (Gargrove)
Ideal geometry (proteins)	:	Engh & Huber (2001)
Ideal geometry (DNA, RNA)	:	Parkinson et al. (1996)
Validation Pipeline (wwPDB-VP)	:	2.36.2

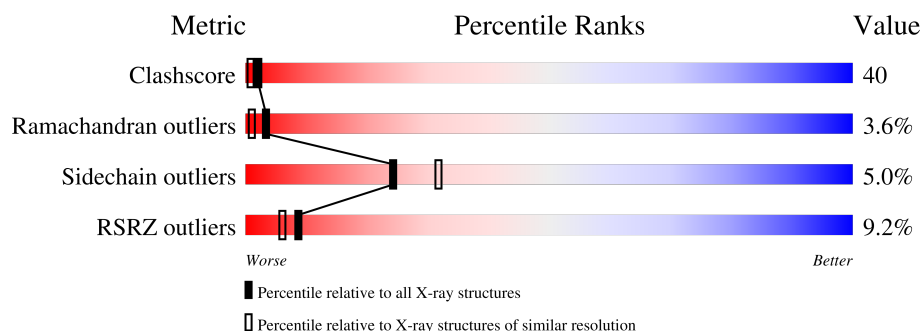
1 Overall quality at a glance

The following experimental techniques were used to determine the structure:

X-RAY DIFFRACTION

The reported resolution of this entry is 2.45 Å.

Percentile scores (ranging between 0-100) for global validation metrics of the entry are shown in the following graphic. The table shows the number of entries on which the scores are based.



Metric	Whole archive (#Entries)	Similar resolution (#Entries, resolution range(Å))
Clashscore	141614	1613 (2.48-2.44)
Ramachandran outliers	138981	1598 (2.48-2.44)
Sidechain outliers	138945	1598 (2.48-2.44)
RSRZ outliers	127900	1523 (2.48-2.44)

The table below summarises the geometric issues observed across the polymeric chains and their fit to the electron density. The red, orange, yellow and green segments of the lower bar indicate the fraction of residues that contain outliers for ≥ 3 , 2, 1 and 0 types of geometric quality criteria respectively. A grey segment represents the fraction of residues that are not modelled. The numeric value for each fraction is indicated below the corresponding segment, with a dot representing fractions $\leq 5\%$. The upper red bar (where present) indicates the fraction of residues that have poor fit to the electron density. The numeric value is given above the bar.

Mol	Chain	Length	Quality of chain
1	A	208	<div> <div>15%</div> <div>57%</div> <div>38%</div> <div>5%</div> </div>
1	H	208	<div> <div>8%</div> <div>59%</div> <div>38%</div> <div>.</div> </div>
2	B	214	<div> <div>10%</div> <div>59%</div> <div>35%</div> <div>6%</div> </div>
2	L	214	<div> <div>4%</div> <div>50%</div> <div>43%</div> <div>7%</div> </div>

2 Entry composition [i](#)

There are 4 unique types of molecules in this entry. The entry contains 6633 atoms, of which 0 are hydrogens and 0 are deuteriums.

In the tables below, the ZeroOcc column contains the number of atoms modelled with zero occupancy, the AltConf column contains the number of residues with at least one atom in alternate conformation and the Trace column contains the number of residues modelled with at most 2 atoms.

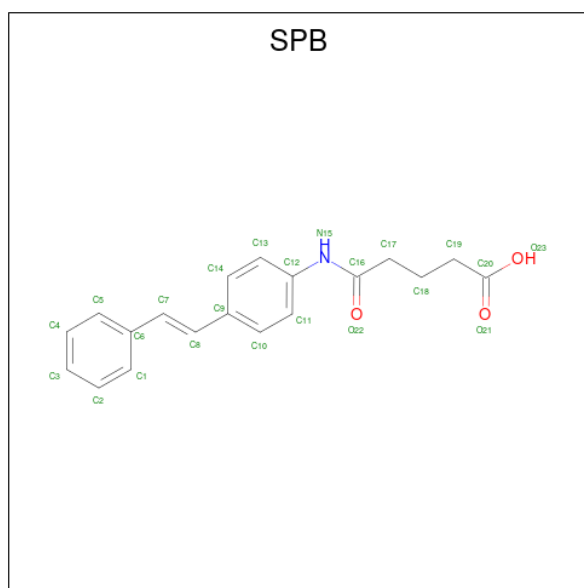
- Molecule 1 is a protein called BLUE FLUORESCENT ANTIBODY (19G2)-HEAVY CHAIN.

Mol	Chain	Residues	Atoms					ZeroOcc	AltConf	Trace
1	H	208	Total	C	N	O	S	0	0	0
			1542	972	259	303	8			
1	A	208	Total	C	N	O	S	0	0	0
			1542	972	259	303	8			

- Molecule 2 is a protein called BLUE FLUORESCENT ANTIBODY (19G2)-LIGHT CHAIN.

Mol	Chain	Residues	Atoms					ZeroOcc	AltConf	Trace
2	L	214	Total	C	N	O	S	0	0	0
			1640	1026	274	334	6			
2	B	214	Total	C	N	O	S	0	0	0
			1640	1026	274	334	6			

- Molecule 3 is 4-(4-STYRYL-PHENYLCARBAMOYL)-BUTYRIC ACID (three-letter code: SPB) (formula: $C_{19}H_{19}NO_3$).



Mol	Chain	Residues	Atoms				ZeroOcc	AltConf
3	L	1	Total	C	N	O	0	0
			23	19	1	3		
3	A	1	Total	C	N	O	0	0
			23	19	1	3		

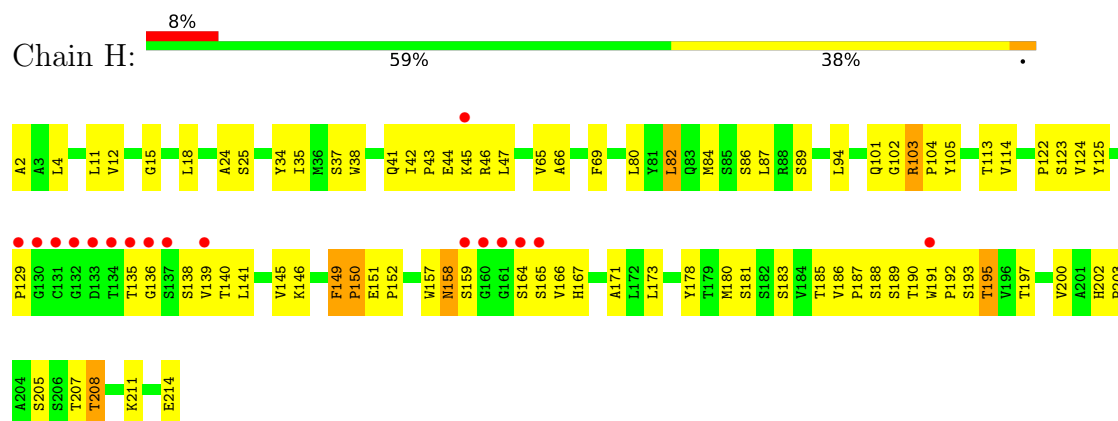
- Molecule 4 is water.

Mol	Chain	Residues	Atoms		ZeroOcc	AltConf
4	H	38	Total	O	0	0
			38	38		
4	L	70	Total	O	0	0
			70	70		
4	A	56	Total	O	0	0
			56	56		
4	B	59	Total	O	0	0
			59	59		

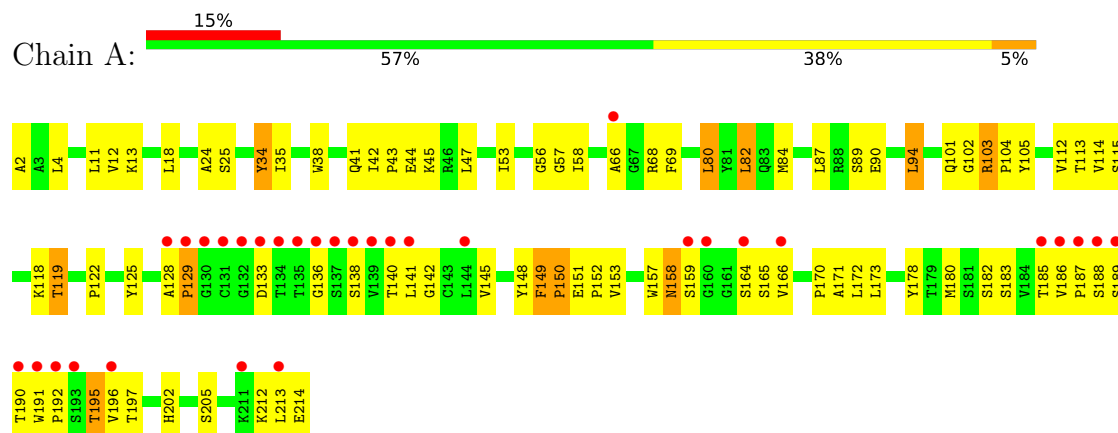
3 Residue-property plots [i](#)

These plots are drawn for all protein, RNA, DNA and oligosaccharide chains in the entry. The first graphic for a chain summarises the proportions of the various outlier classes displayed in the second graphic. The second graphic shows the sequence view annotated by issues in geometry and electron density. Residues are color-coded according to the number of geometric quality criteria for which they contain at least one outlier: green = 0, yellow = 1, orange = 2 and red = 3 or more. A red dot above a residue indicates a poor fit to the electron density ($RSRZ > 2$). Stretches of 2 or more consecutive residues without any outlier are shown as a green connector. Residues present in the sample, but not in the model, are shown in grey.

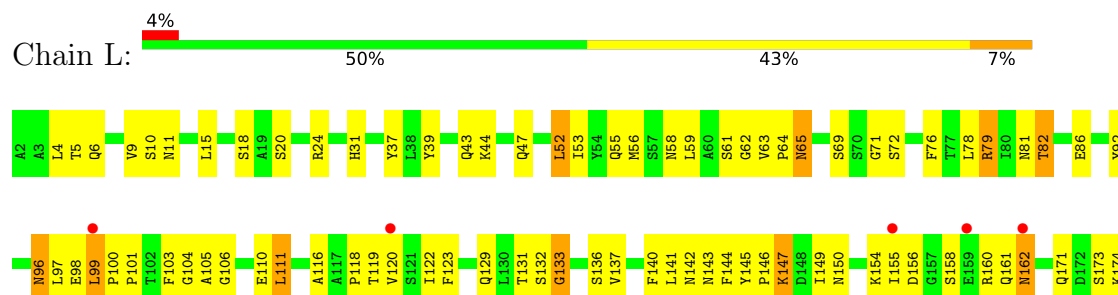
• Molecule 1: BLUE FLUORESCENT ANTIBODY (19G2)-HEAVY CHAIN

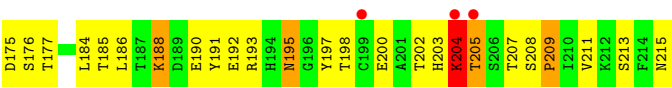


• Molecule 1: BLUE FLUORESCENT ANTIBODY (19G2)-HEAVY CHAIN

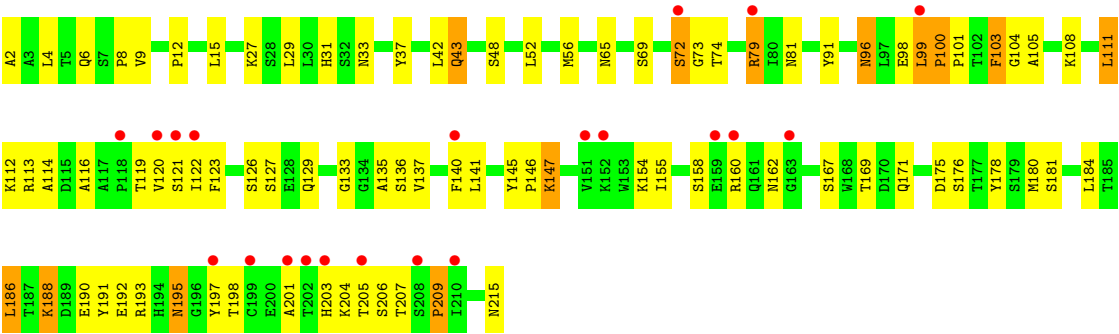


• Molecule 2: BLUE FLUORESCENT ANTIBODY (19G2)-LIGHT CHAIN





● Molecule 2: BLUE FLUORESCENT ANTIBODY (19G2)-LIGHT CHAIN



4 Data and refinement statistics

Property	Value	Source
Space group	C 1 2 1	Depositor
Cell constants a, b, c, α , β , γ	196.93Å 62.07Å 93.54Å 90.00° 117.54° 90.00°	Depositor
Resolution (Å)	20.00 – 2.45 49.74 – 2.44	Depositor EDS
% Data completeness (in resolution range)	95.2 (20.00-2.45) 92.7 (49.74-2.44)	Depositor EDS
R_{merge}	0.04	Depositor
R_{sym}	(Not available)	Depositor
$\langle I/\sigma(I) \rangle$ ¹	5.80 (at 2.45Å)	Xtriage
Refinement program	CNS	Depositor
R, R_{free}	0.231 , 0.262 0.219 , (Not available)	Depositor DCC
R_{free} test set	No test flags present.	wwPDB-VP
Wilson B-factor (Å ²)	46.9	Xtriage
Anisotropy	0.088	Xtriage
Bulk solvent k_{sol} (e/Å ³), B_{sol} (Å ²)	0.29 , 58.3	EDS
L-test for twinning ²	$\langle L \rangle = 0.50$, $\langle L^2 \rangle = 0.33$	Xtriage
Estimated twinning fraction	0.016 for -h-2*k,l	Xtriage
F_o, F_c correlation	0.94	EDS
Total number of atoms	6633	wwPDB-VP
Average B, all atoms (Å ²)	60.0	wwPDB-VP

Xtriage's analysis on translational NCS is as follows: *The largest off-origin peak in the Patterson function is 5.67% of the height of the origin peak. No significant pseudotranslation is detected.*

¹Intensities estimated from amplitudes.

²Theoretical values of $\langle |L| \rangle$, $\langle L^2 \rangle$ for acentric reflections are 0.5, 0.333 respectively for untwinned datasets, and 0.375, 0.2 for perfectly twinned datasets.

5 Model quality [i](#)

5.1 Standard geometry [i](#)

Bond lengths and bond angles in the following residue types are not validated in this section: SPB

The Z score for a bond length (or angle) is the number of standard deviations the observed value is removed from the expected value. A bond length (or angle) with $|Z| > 5$ is considered an outlier worth inspection. RMSZ is the root-mean-square of all Z scores of the bond lengths (or angles).

Mol	Chain	Bond lengths		Bond angles	
		RMSZ	$\# Z > 5$	RMSZ	$\# Z > 5$
1	A	0.37	0/1581	0.67	0/2159
1	H	0.35	0/1581	0.66	0/2159
2	B	0.36	0/1677	0.61	0/2283
2	L	0.39	0/1677	0.66	0/2283
All	All	0.37	0/6516	0.65	0/8884

There are no bond length outliers.

There are no bond angle outliers.

There are no chirality outliers.

There are no planarity outliers.

5.2 Too-close contacts [i](#)

In the following table, the Non-H and H(model) columns list the number of non-hydrogen atoms and hydrogen atoms in the chain respectively. The H(added) column lists the number of hydrogen atoms added and optimized by MolProbity. The Clashes column lists the number of clashes within the asymmetric unit, whereas Symm-Clashes lists symmetry-related clashes.

Mol	Chain	Non-H	H(model)	H(added)	Clashes	Symm-Clashes
1	A	1542	0	1519	129	0
1	H	1542	0	1519	101	0
2	B	1640	0	1586	119	0
2	L	1640	0	1586	168	0
3	A	23	0	17	0	0
3	L	23	0	17	5	0
4	A	56	0	0	66	0
4	B	59	0	0	55	0
4	H	38	0	0	34	0

Continued on next page...

Continued from previous page...

Mol	Chain	Non-H	H(model)	H(added)	Clashes	Symm-Clashes
4	L	70	0	0	92	0
All	All	6633	0	6244	509	0

The all-atom clashscore is defined as the number of clashes found per 1000 atoms (including hydrogen atoms). The all-atom clashscore for this structure is 40.

All (509) close contacts within the same asymmetric unit are listed below, sorted by their clash magnitude.

Atom-1	Atom-2	Interatomic distance (Å)	Clash overlap (Å)
2:L:61:SER:HA	4:L:277:HOH:O	1.29	1.32
2:L:141:LEU:HA	4:L:252:HOH:O	1.28	1.29
1:A:150:PRO:HD2	4:A:233:HOH:O	1.24	1.29
1:H:150:PRO:HD2	4:H:216:HOH:O	1.30	1.29
2:B:205:THR:HG22	4:B:266:HOH:O	1.14	1.28
1:H:15:GLY:HA2	4:H:238:HOH:O	1.26	1.23
2:B:145:TYR:HB3	4:B:258:HOH:O	1.40	1.21
2:L:56:MET:HG2	4:L:245:HOH:O	1.34	1.20
1:A:157:TRP:HH2	4:A:237:HOH:O	1.19	1.20
1:A:53:ILE:HG13	4:A:271:HOH:O	1.42	1.19
2:B:9:VAL:HG12	4:B:271:HOH:O	1.37	1.18
1:A:213:LEU:HD23	4:A:238:HOH:O	1.42	1.15
2:L:78:LEU:HG	4:L:255:HOH:O	1.46	1.15
2:L:136:SER:HB3	4:L:271:HOH:O	1.46	1.15
2:L:56:MET:HE1	4:L:267:HOH:O	1.52	1.07
1:A:112:VAL:HG13	4:A:270:HOH:O	1.55	1.06
1:H:2:ALA:HB2	4:H:222:HOH:O	1.55	1.05
2:L:175:ASP:CB	4:L:242:HOH:O	2.05	1.04
2:L:59:LEU:HD13	4:L:281:HOH:O	1.55	1.03
2:L:145:TYR:HB2	4:L:275:HOH:O	1.58	1.03
1:A:152:PRO:HG2	4:A:275:HOH:O	1.59	1.02
1:H:38:TRP:CD1	4:H:245:HOH:O	2.11	1.00
1:A:34:TYR:HB3	1:A:101:GLN:HE21	1.27	0.99
2:L:99:LEU:O	2:L:101:PRO:HD3	1.63	0.98
2:B:195:ASN:HB2	4:B:244:HOH:O	1.61	0.98
2:L:56:MET:CE	4:L:267:HOH:O	2.08	0.98
2:L:100:PRO:HD2	4:L:272:HOH:O	1.62	0.98
2:L:175:ASP:HB2	4:L:242:HOH:O	1.60	0.98
2:L:65:ASN:HA	4:L:281:HOH:O	1.65	0.97
1:H:34:TYR:HB3	1:H:101:GLN:HE21	1.29	0.97
2:L:61:SER:HA	4:L:289:HOH:O	1.64	0.96
2:L:4:LEU:HB2	4:L:243:HOH:O	1.63	0.96

Continued on next page...

Continued from previous page...

Atom-1	Atom-2	Interatomic distance (Å)	Clash overlap (Å)
2:B:201:ALA:CA	4:B:262:HOH:O	2.14	0.96
2:B:207:THR:HG22	4:B:259:HOH:O	1.65	0.95
2:B:207:THR:CG2	4:B:259:HOH:O	2.14	0.94
4:A:244:HOH:O	2:B:140:PHE:CZ	2.22	0.93
2:B:79:ARG:HB2	2:B:79:ARG:NH1	1.83	0.92
2:B:113:ARG:HH11	2:B:113:ARG:HB3	1.32	0.92
2:L:136:SER:CB	4:L:271:HOH:O	2.08	0.91
1:H:192:PRO:HG2	4:H:236:HOH:O	1.68	0.91
1:H:205:SER:HB2	1:H:207:THR:HG22	1.53	0.90
1:H:139:VAL:HG23	4:H:228:HOH:O	1.71	0.90
2:B:79:ARG:HD2	4:B:216:HOH:O	1.72	0.90
2:L:100:PRO:CD	4:L:272:HOH:O	2.18	0.89
2:L:5:THR:HG23	4:L:238:HOH:O	1.73	0.88
1:A:180:MET:HE3	4:A:265:HOH:O	1.72	0.88
1:H:2:ALA:CB	4:H:222:HOH:O	2.12	0.88
2:B:145:TYR:CG	4:B:222:HOH:O	2.26	0.87
2:L:161:GLN:HB3	4:L:263:HOH:O	1.73	0.87
1:H:2:ALA:N	4:H:222:HOH:O	2.05	0.86
1:A:44:GLU:HB2	4:A:232:HOH:O	1.75	0.86
1:A:56:GLY:N	4:A:241:HOH:O	2.03	0.86
2:L:24:ARG:NE	4:L:248:HOH:O	2.03	0.86
1:A:157:TRP:CH2	4:A:237:HOH:O	2.01	0.86
2:L:144:PHE:C	4:L:275:HOH:O	2.13	0.86
2:L:79:ARG:NH1	2:L:79:ARG:HB2	1.90	0.86
2:B:113:ARG:HB3	2:B:113:ARG:NH1	1.92	0.85
1:A:157:TRP:CZ2	4:A:240:HOH:O	2.29	0.85
1:H:89:SER:CB	4:H:229:HOH:O	2.24	0.85
2:B:79:ARG:NH2	4:B:268:HOH:O	2.09	0.85
2:B:201:ALA:HA	4:B:262:HOH:O	1.73	0.85
1:A:180:MET:CE	4:A:265:HOH:O	2.24	0.85
2:B:129:GLN:HB2	4:B:265:HOH:O	1.76	0.85
2:L:44:LYS:HE2	4:L:239:HOH:O	1.77	0.84
3:L:225:SPB:C20	4:L:291:HOH:O	2.23	0.84
2:L:44:LYS:CE	4:L:239:HOH:O	2.26	0.84
2:L:209:PRO:HD3	4:L:254:HOH:O	1.77	0.84
2:B:195:ASN:CB	4:B:244:HOH:O	2.21	0.83
2:B:113:ARG:HG2	2:B:114:ALA:H	1.44	0.82
2:B:145:TYR:CD2	4:B:222:HOH:O	2.32	0.81
2:L:79:ARG:HB2	2:L:79:ARG:HH11	1.44	0.81
1:H:124:VAL:N	4:H:233:HOH:O	2.10	0.81
1:A:2:ALA:N	4:A:228:HOH:O	2.13	0.81

Continued on next page...

Continued from previous page...

Atom-1	Atom-2	Interatomic distance (Å)	Clash overlap (Å)
2:B:73:GLY:N	4:B:242:HOH:O	2.10	0.80
2:B:201:ALA:CB	4:B:262:HOH:O	2.29	0.80
1:H:89:SER:HB2	4:H:229:HOH:O	1.81	0.80
2:B:79:ARG:HB2	2:B:79:ARG:HH11	1.45	0.80
1:A:142:GLY:C	4:A:237:HOH:O	2.19	0.80
2:B:119:THR:HG22	4:B:261:HOH:O	1.81	0.80
2:L:162:ASN:N	4:L:263:HOH:O	2.13	0.80
2:B:127:SER:N	4:B:243:HOH:O	2.02	0.80
2:B:79:ARG:CD	4:B:216:HOH:O	2.27	0.79
1:H:123:SER:HA	4:H:233:HOH:O	1.82	0.79
2:L:20:SER:HB2	4:L:286:HOH:O	1.82	0.79
2:L:20:SER:C	4:L:286:HOH:O	2.21	0.79
2:B:99:LEU:O	2:B:101:PRO:HD3	1.83	0.79
2:B:201:ALA:HB1	4:B:262:HOH:O	1.82	0.79
2:L:20:SER:CB	4:L:286:HOH:O	2.29	0.79
2:B:8:PRO:CD	4:B:273:HOH:O	2.31	0.79
2:L:24:ARG:NH2	4:L:248:HOH:O	2.13	0.78
2:B:8:PRO:HD3	4:B:273:HOH:O	1.82	0.78
2:B:73:GLY:CA	4:B:242:HOH:O	2.33	0.77
1:A:112:VAL:HA	4:A:270:HOH:O	1.83	0.77
2:L:24:ARG:NH1	4:L:260:HOH:O	2.18	0.77
2:L:37:TYR:HB3	2:L:96:ASN:ND2	2.00	0.77
2:L:137:VAL:CG1	2:L:184:LEU:HB3	2.14	0.77
2:L:99:LEU:O	2:L:101:PRO:CD	2.33	0.77
2:B:169:THR:O	4:B:257:HOH:O	2.02	0.77
1:A:182:SER:C	4:A:240:HOH:O	2.24	0.76
2:L:20:SER:O	4:L:286:HOH:O	2.03	0.76
2:L:191:TYR:OH	4:L:282:HOH:O	2.04	0.76
2:L:145:TYR:CB	4:L:275:HOH:O	2.23	0.76
1:A:197:THR:OG1	1:A:212:LYS:HG2	1.85	0.76
2:L:79:ARG:N	4:L:255:HOH:O	2.19	0.75
2:L:155:ILE:HD13	2:L:160:ARG:HD3	1.67	0.75
1:A:197:THR:N	4:A:264:HOH:O	2.18	0.75
1:H:192:PRO:O	4:H:236:HOH:O	2.04	0.75
1:H:4:LEU:HD23	1:H:24:ALA:HB2	1.68	0.75
2:B:12:PRO:HB2	2:B:112:LYS:HB2	1.66	0.75
2:L:10:SER:OG	4:L:287:HOH:O	2.03	0.75
1:A:125:TYR:CG	4:B:265:HOH:O	2.39	0.74
1:A:34:TYR:HB3	1:A:101:GLN:NE2	2.03	0.74
1:H:123:SER:CA	4:H:233:HOH:O	2.34	0.74
2:L:24:ARG:CZ	4:L:248:HOH:O	2.36	0.73

Continued on next page...

Continued from previous page...

Atom-1	Atom-2	Interatomic distance (Å)	Clash overlap (Å)
2:L:204:LYS:NZ	2:L:204:LYS:HA	2.03	0.73
1:A:170:PRO:O	4:A:278:HOH:O	2.05	0.73
1:A:53:ILE:CG1	4:A:271:HOH:O	2.15	0.72
2:L:161:GLN:CA	4:L:263:HOH:O	2.36	0.72
1:A:58:ILE:O	4:A:271:HOH:O	2.05	0.72
2:B:145:TYR:CD1	4:B:222:HOH:O	2.41	0.72
1:A:4:LEU:HD23	1:A:24:ALA:HB2	1.71	0.72
1:H:69:PHE:O	4:H:230:HOH:O	2.08	0.72
2:B:188:LYS:O	2:B:192:GLU:HG2	1.90	0.71
1:H:187:PRO:O	1:H:190:THR:HG22	1.90	0.71
1:H:47:LEU:HD23	4:L:235:HOH:O	1.89	0.71
2:B:37:TYR:HB3	2:B:96:ASN:ND2	2.06	0.71
1:H:42:ILE:HG23	1:H:43:PRO:HD2	1.73	0.71
1:H:139:VAL:CG2	4:H:228:HOH:O	2.33	0.71
2:L:137:VAL:HG12	2:L:184:LEU:HB3	1.70	0.71
1:A:187:PRO:O	1:A:190:THR:HG22	1.90	0.71
2:L:81:ASN:HA	4:L:228:HOH:O	1.91	0.71
1:H:37:SER:C	4:H:245:HOH:O	2.30	0.70
2:L:47:GLN:OE1	4:L:293:HOH:O	2.09	0.70
2:B:135:ALA:O	2:B:186:LEU:HD12	1.92	0.70
2:L:146:PRO:HD2	2:L:205:THR:HG21	1.72	0.69
1:A:42:ILE:HG23	1:A:43:PRO:HD2	1.73	0.69
1:A:158:ASN:OD1	4:A:264:HOH:O	2.11	0.69
1:A:171:ALA:HB2	1:A:180:MET:HE2	1.74	0.69
1:H:171:ALA:HB2	1:H:180:MET:HE2	1.75	0.69
1:H:65:VAL:O	4:H:230:HOH:O	2.11	0.69
2:L:103:PHE:C	4:L:243:HOH:O	2.30	0.68
1:A:69:PHE:O	4:A:231:HOH:O	2.11	0.68
1:A:153:VAL:HG12	4:A:265:HOH:O	1.94	0.68
2:B:72:SER:OG	2:B:73:GLY:N	2.25	0.68
2:B:154:LYS:HB2	2:B:198:THR:HB	1.73	0.68
1:H:181:SER:OG	4:H:244:HOH:O	2.10	0.67
1:H:34:TYR:HB3	1:H:101:GLN:NE2	2.04	0.67
2:L:43:GLN:HG2	4:L:269:HOH:O	1.94	0.67
1:A:150:PRO:O	1:A:202:HIS:HE1	1.77	0.67
1:A:172:LEU:HD23	4:A:278:HOH:O	1.92	0.67
1:H:89:SER:HB3	4:H:229:HOH:O	1.89	0.67
2:L:99:LEU:N	4:L:272:HOH:O	2.27	0.67
2:L:64:PRO:O	4:L:281:HOH:O	2.13	0.67
2:L:96:ASN:HA	4:L:226:HOH:O	1.95	0.66
2:L:61:SER:CA	4:L:277:HOH:O	2.07	0.66

Continued on next page...

Continued from previous page...

Atom-1	Atom-2	Interatomic distance (Å)	Clash overlap (Å)
1:A:133:ASP:OD2	4:A:248:HOH:O	2.12	0.66
1:A:142:GLY:CA	4:A:237:HOH:O	2.43	0.66
1:A:149:PHE:N	4:A:233:HOH:O	2.20	0.66
1:A:213:LEU:O	4:A:253:HOH:O	2.14	0.66
2:B:113:ARG:HG2	2:B:114:ALA:N	2.10	0.66
2:B:79:ARG:NE	4:B:216:HOH:O	2.29	0.65
1:A:183:SER:HB3	2:B:140:PHE:CE2	2.31	0.65
1:H:38:TRP:CG	4:H:245:HOH:O	2.40	0.65
2:L:71:GLY:O	4:L:267:HOH:O	2.14	0.65
2:L:37:TYR:HB3	2:L:96:ASN:HD22	1.61	0.65
1:A:140:THR:HG22	1:A:185:THR:OG1	1.97	0.65
1:H:149:PHE:N	4:H:216:HOH:O	2.28	0.65
2:L:62:GLY:N	4:L:289:HOH:O	2.21	0.65
2:B:137:VAL:HG12	2:B:184:LEU:HB3	1.79	0.65
2:L:111:LEU:H	2:L:171:GLN:HE22	1.44	0.65
1:H:150:PRO:HG2	1:H:202:HIS:NE2	2.12	0.64
2:L:141:LEU:N	2:L:141:LEU:HD12	2.12	0.64
2:B:121:SER:HB2	4:B:250:HOH:O	1.97	0.64
4:A:244:HOH:O	2:B:140:PHE:HZ	1.67	0.64
2:L:175:ASP:OD2	4:L:242:HOH:O	2.14	0.64
2:B:99:LEU:O	2:B:101:PRO:CD	2.46	0.64
1:A:68:ARG:NE	4:A:274:HOH:O	2.05	0.63
1:A:202:HIS:HD2	1:A:205:SER:OG	1.80	0.63
1:A:164:SER:C	4:A:235:HOH:O	2.37	0.63
2:B:96:ASN:HD22	2:B:96:ASN:H	1.45	0.63
1:H:140:THR:HG22	1:H:185:THR:OG1	1.98	0.63
2:B:9:VAL:CG1	4:B:271:HOH:O	2.14	0.63
1:H:183:SER:HB3	2:L:140:PHE:CE2	2.33	0.63
1:H:191:TRP:N	1:H:192:PRO:HD2	2.14	0.63
1:A:136:GLY:O	1:A:188:SER:HB2	1.98	0.63
1:A:166:VAL:HB	4:A:235:HOH:O	1.99	0.63
2:L:175:ASP:CG	4:L:242:HOH:O	2.31	0.63
2:L:207:THR:HG22	2:L:208:SER:N	2.13	0.63
1:A:2:ALA:HA	1:A:25:SER:O	1.99	0.63
1:A:191:TRP:N	1:A:192:PRO:HD2	2.14	0.63
2:B:137:VAL:CG1	2:B:184:LEU:HB3	2.29	0.63
1:A:115:SER:OG	4:A:266:HOH:O	2.16	0.62
1:A:125:TYR:CE2	2:B:129:GLN:HG3	2.34	0.62
2:B:140:PHE:C	2:B:141:LEU:HD12	2.19	0.62
1:H:140:THR:N	4:H:228:HOH:O	2.20	0.62
1:A:164:SER:HA	4:A:235:HOH:O	1.98	0.62

Continued on next page...

Continued from previous page...

Atom-1	Atom-2	Interatomic distance (Å)	Clash overlap (Å)
1:A:44:GLU:O	1:A:45:LYS:HB2	1.99	0.62
1:H:86:SER:HA	4:H:238:HOH:O	2.00	0.62
2:L:161:GLN:CB	4:L:263:HOH:O	2.38	0.61
2:L:79:ARG:HH11	2:L:79:ARG:CB	2.13	0.61
1:H:44:GLU:O	1:H:45:LYS:HB2	1.99	0.61
1:A:164:SER:CA	4:A:235:HOH:O	2.48	0.61
2:B:113:ARG:NH1	4:B:222:HOH:O	2.33	0.61
1:H:2:ALA:HA	1:H:25:SER:O	2.00	0.61
2:L:204:LYS:HA	2:L:204:LYS:HZ2	1.66	0.61
2:B:74:THR:N	4:B:242:HOH:O	2.34	0.61
2:B:111:LEU:H	2:B:171:GLN:HE22	1.46	0.61
1:H:136:GLY:O	1:H:188:SER:HB2	2.00	0.61
1:A:183:SER:N	4:A:240:HOH:O	2.34	0.61
2:B:6:GLN:HE21	2:B:104:GLY:HA3	1.65	0.61
2:B:145:TYR:CB	4:B:258:HOH:O	2.15	0.61
2:L:188:LYS:O	2:L:192:GLU:HG2	2.01	0.60
2:L:105:ALA:HB3	4:L:247:HOH:O	2.01	0.60
1:A:172:LEU:CD2	4:A:278:HOH:O	2.48	0.60
2:B:108:LYS:HD2	4:B:271:HOH:O	2.00	0.60
2:L:61:SER:CA	4:L:289:HOH:O	2.32	0.60
2:L:110:GLU:N	4:L:287:HOH:O	2.13	0.60
2:L:161:GLN:C	4:L:263:HOH:O	2.37	0.60
1:A:213:LEU:HD21	4:A:237:HOH:O	2.02	0.60
2:L:18:SER:HB3	4:L:228:HOH:O	2.01	0.60
2:L:82:THR:N	4:L:228:HOH:O	2.15	0.59
2:L:145:TYR:N	4:L:275:HOH:O	2.34	0.59
1:A:56:GLY:CA	4:A:241:HOH:O	2.48	0.59
2:B:8:PRO:HD2	4:B:273:HOH:O	1.98	0.59
2:B:126:SER:HB2	4:B:243:HOH:O	2.01	0.59
2:B:129:GLN:HE22	2:B:136:SER:N	2.00	0.59
2:L:200:GLU:HG3	2:L:211:VAL:HG12	1.83	0.59
2:B:79:ARG:HH11	2:B:79:ARG:CB	2.15	0.59
2:B:111:LEU:HD13	2:B:112:LYS:H	1.68	0.59
2:L:147:LYS:HD3	2:L:147:LYS:H	1.67	0.59
1:A:103:ARG:NH1	4:A:227:HOH:O	2.13	0.59
1:A:125:TYR:CD2	4:B:265:HOH:O	2.55	0.59
2:B:116:ALA:N	4:B:258:HOH:O	2.36	0.59
2:B:141:LEU:HD12	2:B:141:LEU:N	2.18	0.58
1:H:46:ARG:CB	4:H:219:HOH:O	2.50	0.58
1:H:149:PHE:O	1:H:150:PRO:C	2.41	0.58
2:L:56:MET:CG	4:L:245:HOH:O	2.14	0.58

Continued on next page...

Continued from previous page...

Atom-1	Atom-2	Interatomic distance (Å)	Clash overlap (Å)
1:A:171:ALA:HB2	1:A:180:MET:CE	2.32	0.58
1:H:11:LEU:HD13	1:H:113:THR:HB	1.85	0.58
2:L:79:ARG:O	4:L:255:HOH:O	2.17	0.58
2:L:104:GLY:N	4:L:243:HOH:O	2.35	0.58
2:B:145:TYR:CE2	4:B:222:HOH:O	2.55	0.58
1:A:103:ARG:HD3	1:A:103:ARG:C	2.24	0.58
1:H:150:PRO:HG2	1:H:202:HIS:HE2	1.68	0.57
2:L:78:LEU:CG	4:L:255:HOH:O	2.25	0.57
1:H:171:ALA:HB2	1:H:180:MET:CE	2.33	0.57
1:H:2:ALA:CA	4:H:222:HOH:O	2.43	0.57
2:L:98:GLU:HB3	4:L:272:HOH:O	2.05	0.57
1:H:150:PRO:HG2	1:H:202:HIS:CE1	2.40	0.56
2:L:4:LEU:CG	4:L:243:HOH:O	2.52	0.56
2:L:195:ASN:O	2:L:215:ASN:HA	2.05	0.56
1:A:125:TYR:CB	4:B:265:HOH:O	2.54	0.56
1:A:149:PHE:O	1:A:150:PRO:C	2.40	0.56
1:A:138:SER:HA	1:A:186:VAL:O	2.06	0.56
2:B:27:LYS:NZ	2:B:98:GLU:OE1	2.35	0.56
1:H:164:SER:C	1:H:166:VAL:H	2.09	0.55
2:L:64:PRO:C	4:L:281:HOH:O	2.45	0.55
2:L:155:ILE:O	2:L:155:ILE:HG13	2.05	0.55
1:H:138:SER:HA	1:H:186:VAL:O	2.06	0.55
1:A:103:ARG:HD3	1:A:103:ARG:O	2.07	0.55
2:L:110:GLU:HB2	4:L:287:HOH:O	2.06	0.55
1:A:195:THR:HA	4:A:253:HOH:O	2.07	0.55
1:A:58:ILE:C	4:A:271:HOH:O	2.44	0.55
2:L:100:PRO:HD3	4:L:272:HOH:O	1.98	0.55
2:L:59:LEU:CD1	4:L:281:HOH:O	2.29	0.55
1:A:164:SER:C	1:A:166:VAL:H	2.09	0.55
2:B:119:THR:C	4:B:261:HOH:O	2.45	0.55
2:B:147:LYS:HD3	2:B:147:LYS:H	1.72	0.55
2:B:81:ASN:ND2	4:B:236:HOH:O	2.40	0.54
2:B:207:THR:HG23	4:B:259:HOH:O	1.94	0.54
2:L:6:GLN:NE2	2:L:106:GLY:H	2.05	0.54
2:B:2:ALA:N	4:B:219:HOH:O	2.40	0.54
2:B:122:ILE:N	4:B:250:HOH:O	2.39	0.54
1:H:46:ARG:HB3	4:H:219:HOH:O	2.07	0.54
1:A:68:ARG:NH2	4:A:251:HOH:O	2.39	0.54
1:H:47:LEU:CD2	4:L:235:HOH:O	2.50	0.54
1:H:103:ARG:C	1:H:103:ARG:HD3	2.28	0.54
2:L:154:LYS:HB2	2:L:198:THR:HB	1.90	0.54

Continued on next page...

Continued from previous page...

Atom-1	Atom-2	Interatomic distance (Å)	Clash overlap (Å)
1:A:103:ARG:NE	4:A:255:HOH:O	2.02	0.54
1:H:69:PHE:N	4:H:230:HOH:O	2.35	0.53
2:L:9:VAL:O	4:L:229:HOH:O	2.19	0.53
2:B:155:ILE:HG13	2:B:155:ILE:O	2.07	0.53
2:B:180:MET:HG2	2:B:181:SER:N	2.23	0.53
2:L:96:ASN:HD22	2:L:96:ASN:H	1.55	0.53
2:B:103:PHE:N	2:B:103:PHE:CD1	2.76	0.53
1:A:13:LYS:HG3	4:A:267:HOH:O	2.07	0.53
1:A:166:VAL:HG23	4:A:235:HOH:O	2.08	0.53
2:L:119:THR:C	4:L:252:HOH:O	2.48	0.53
2:L:198:THR:HA	2:L:213:SER:HB3	1.91	0.53
2:L:204:LYS:HA	2:L:204:LYS:HZ3	1.72	0.53
1:A:150:PRO:HG2	1:A:202:HIS:NE2	2.23	0.53
2:L:79:ARG:C	4:L:255:HOH:O	2.47	0.53
2:L:186:LEU:CD1	2:L:191:TYR:HB2	2.38	0.53
2:B:154:LYS:HA	2:B:158:SER:O	2.08	0.53
2:L:171:GLN:NE2	4:L:274:HOH:O	2.42	0.53
1:A:56:GLY:HA3	4:A:241:HOH:O	2.08	0.53
1:A:68:ARG:HG3	4:A:274:HOH:O	2.09	0.53
1:A:112:VAL:CA	4:A:270:HOH:O	2.49	0.52
1:A:118:LYS:HD2	1:A:118:LYS:N	2.24	0.52
1:A:157:TRP:HZ2	4:A:240:HOH:O	1.80	0.52
2:B:48:SER:HA	4:B:249:HOH:O	2.09	0.52
1:H:42:ILE:HG22	1:H:44:GLU:H	1.74	0.52
1:H:125:TYR:CE2	2:L:129:GLN:HG3	2.45	0.52
2:L:72:SER:O	2:L:76:PHE:HE2	1.92	0.52
1:A:170:PRO:C	4:A:278:HOH:O	2.43	0.52
2:L:207:THR:HG22	2:L:208:SER:H	1.75	0.52
1:A:44:GLU:CB	4:A:232:HOH:O	2.41	0.52
1:H:89:SER:HA	1:H:114:VAL:HB	1.92	0.52
2:L:118:PRO:HB3	2:L:144:PHE:HB3	1.90	0.52
2:L:208:SER:N	4:L:254:HOH:O	2.35	0.52
2:L:150:ASN:ND2	2:L:202:THR:HB	2.24	0.52
2:L:204:LYS:O	2:L:205:THR:HB	2.10	0.52
2:B:81:ASN:ND2	4:B:221:HOH:O	2.42	0.52
1:H:18:LEU:HB3	1:H:84:MET:HE3	1.91	0.51
1:A:42:ILE:HG22	1:A:44:GLU:H	1.74	0.51
2:B:105:ALA:HB3	4:B:229:HOH:O	2.11	0.51
2:B:111:LEU:H	2:B:171:GLN:NE2	2.09	0.51
2:B:111:LEU:HD13	2:B:112:LYS:N	2.24	0.51
1:H:205:SER:CB	1:H:207:THR:HG22	2.32	0.51

Continued on next page...

Continued from previous page...

Atom-1	Atom-2	Interatomic distance (Å)	Clash overlap (Å)
2:B:108:LYS:HB3	4:B:271:HOH:O	2.10	0.51
2:B:119:THR:O	4:B:261:HOH:O	2.18	0.51
1:H:138:SER:H	1:H:188:SER:H	1.58	0.51
1:A:103:ARG:HG3	1:A:103:ARG:HH11	1.76	0.51
2:B:99:LEU:O	2:B:101:PRO:N	2.43	0.51
2:B:145:TYR:CE1	4:B:222:HOH:O	2.63	0.51
2:L:56:MET:O	2:L:69:SER:HB3	2.11	0.51
2:B:203:HIS:O	2:B:204:LYS:HG2	2.11	0.51
1:H:102:GLY:HA2	2:L:55:GLN:HE21	1.76	0.50
1:A:138:SER:H	1:A:188:SER:H	1.58	0.50
2:B:191:TYR:HA	2:B:197:TYR:OH	2.10	0.50
2:L:53:ILE:HG12	2:L:59:LEU:HD23	1.93	0.50
2:L:177:THR:HG22	4:L:275:HOH:O	2.10	0.50
2:L:215:ASN:O	4:L:244:HOH:O	2.19	0.50
1:H:12:VAL:HG21	1:H:18:LEU:HD13	1.94	0.50
1:A:141:LEU:HB3	1:A:213:LEU:HD22	1.94	0.50
1:A:149:PHE:O	1:A:151:GLU:N	2.45	0.50
2:L:103:PHE:CA	4:L:243:HOH:O	2.60	0.49
2:B:180:MET:HG2	2:B:181:SER:H	1.77	0.49
1:A:89:SER:HA	1:A:114:VAL:HB	1.94	0.49
1:A:149:PHE:HB3	1:A:150:PRO:CD	2.42	0.49
1:H:102:GLY:O	1:H:104:PRO:HD3	2.12	0.49
1:A:41:GLN:HE22	2:B:43:GLN:NE2	2.10	0.49
1:A:102:GLY:O	1:A:104:PRO:HD3	2.12	0.49
2:L:141:LEU:O	2:L:144:PHE:HE1	1.95	0.49
1:A:166:VAL:CB	4:A:235:HOH:O	2.55	0.49
1:H:149:PHE:HB3	1:H:150:PRO:CD	2.42	0.49
1:A:47:LEU:CD2	4:A:230:HOH:O	2.61	0.49
1:A:12:VAL:HG21	1:A:18:LEU:HD13	1.94	0.49
1:H:150:PRO:C	1:H:152:PRO:HD2	2.33	0.48
1:H:151:GLU:N	1:H:152:PRO:HD2	2.28	0.48
1:H:146:LYS:HE3	4:L:271:HOH:O	2.12	0.48
1:A:166:VAL:CG2	4:A:235:HOH:O	2.60	0.48
1:A:35:ILE:H	1:A:101:GLN:NE2	2.11	0.48
2:B:155:ILE:HD13	2:B:160:ARG:HD3	1.94	0.48
1:H:149:PHE:O	1:H:151:GLU:N	2.46	0.48
2:L:150:ASN:HD21	2:L:202:THR:HB	1.79	0.48
1:A:18:LEU:HB3	1:A:84:MET:HE3	1.96	0.48
2:L:99:LEU:O	2:L:101:PRO:N	2.47	0.48
2:L:120:VAL:HA	2:L:140:PHE:O	2.13	0.48
2:B:195:ASN:N	2:B:195:ASN:HD22	2.11	0.48

Continued on next page...

Continued from previous page...

Atom-1	Atom-2	Interatomic distance (Å)	Clash overlap (Å)
1:H:191:TRP:N	1:H:192:PRO:CD	2.77	0.48
2:L:173:SER:C	2:L:174:LYS:HD2	2.34	0.48
2:L:191:TYR:HA	2:L:197:TYR:OH	2.14	0.48
2:B:207:THR:HG22	2:B:207:THR:O	2.14	0.48
1:A:112:VAL:CG1	4:A:270:HOH:O	2.33	0.47
2:B:195:ASN:O	2:B:215:ASN:HA	2.13	0.47
2:L:136:SER:HB3	2:L:185:THR:HG22	1.95	0.47
1:A:150:PRO:C	1:A:152:PRO:HD2	2.34	0.47
1:A:191:TRP:N	1:A:192:PRO:CD	2.77	0.47
1:A:57:GLY:C	4:A:271:HOH:O	2.52	0.47
1:H:173:LEU:HD13	1:H:178:TYR:CE1	2.49	0.47
1:H:205:SER:C	1:H:207:THR:H	2.17	0.47
1:A:11:LEU:HD13	1:A:113:THR:HB	1.97	0.47
1:H:103:ARG:HH11	1:H:103:ARG:HG3	1.77	0.47
1:A:173:LEU:HD13	1:A:178:TYR:CE1	2.49	0.47
2:L:4:LEU:HD23	4:L:243:HOH:O	2.15	0.47
1:A:157:TRP:CE2	4:A:240:HOH:O	2.61	0.47
2:L:86:GLU:CD	2:L:86:GLU:H	2.18	0.47
2:L:154:LYS:HA	2:L:158:SER:O	2.15	0.47
2:B:147:LYS:HB3	2:B:178:TYR:CD2	2.50	0.47
4:A:244:HOH:O	2:B:140:PHE:CE2	2.58	0.47
1:H:103:ARG:NH1	4:H:223:HOH:O	2.41	0.46
2:L:103:PHE:N	2:L:103:PHE:CD1	2.83	0.46
2:L:155:ILE:O	2:L:156:ASP:HB2	2.16	0.46
1:A:151:GLU:N	1:A:152:PRO:HD2	2.29	0.46
1:H:12:VAL:O	1:H:114:VAL:HA	2.15	0.46
1:H:191:TRP:HB3	4:H:218:HOH:O	2.15	0.46
2:L:185:THR:HG22	4:L:271:HOH:O	2.14	0.46
2:B:147:LYS:HB3	2:B:178:TYR:CE2	2.50	0.46
2:L:4:LEU:CB	4:L:243:HOH:O	2.36	0.46
2:B:96:ASN:HD22	2:B:96:ASN:N	2.07	0.46
1:H:41:GLN:HE22	2:L:43:GLN:NE2	2.13	0.46
2:L:197:TYR:O	2:L:213:SER:HB2	2.14	0.46
1:A:118:LYS:HD2	1:A:118:LYS:H	1.80	0.46
1:H:35:ILE:H	1:H:101:GLN:NE2	2.13	0.46
1:A:150:PRO:HG2	1:A:202:HIS:CE1	2.50	0.46
2:B:100:PRO:HG2	4:B:220:HOH:O	2.15	0.46
1:H:135:THR:O	4:H:249:HOH:O	2.21	0.46
2:L:44:LYS:HE3	4:L:239:HOH:O	2.04	0.46
2:L:184:LEU:CD2	2:L:186:LEU:HD23	2.46	0.46
2:L:195:ASN:C	2:L:195:ASN:HD22	2.20	0.46

Continued on next page...

Continued from previous page...

Atom-1	Atom-2	Interatomic distance (Å)	Clash overlap (Å)
1:H:203:PRO:C	1:H:205:SER:H	2.20	0.45
2:B:42:LEU:HD13	2:B:91:TYR:CZ	2.51	0.45
2:L:97:LEU:O	3:L:225:SPB:H192	2.16	0.45
2:L:131:THR:C	2:L:133:GLY:H	2.19	0.45
1:A:58:ILE:N	4:A:271:HOH:O	2.50	0.45
1:A:196:VAL:CA	4:A:264:HOH:O	2.64	0.45
2:B:4:LEU:N	2:B:4:LEU:HD22	2.31	0.45
2:B:120:VAL:HA	2:B:140:PHE:O	2.16	0.45
1:H:205:SER:HB2	1:H:207:THR:CG2	2.37	0.45
2:L:207:THR:CG2	2:L:208:SER:N	2.78	0.45
2:L:56:MET:HE2	4:L:267:HOH:O	1.91	0.45
2:B:56:MET:O	2:B:69:SER:HB3	2.17	0.45
2:B:186:LEU:HD13	2:B:191:TYR:HB2	1.98	0.45
1:H:103:ARG:HD2	1:H:105:TYR:CE2	2.51	0.45
1:H:103:ARG:HD3	1:H:103:ARG:O	2.16	0.45
2:B:105:ALA:CB	4:B:229:HOH:O	2.64	0.45
2:L:31:HIS:CD2	4:L:276:HOH:O	2.69	0.45
1:H:138:SER:H	1:H:187:PRO:HA	1.82	0.44
2:B:207:THR:O	2:B:209:PRO:HD3	2.18	0.44
1:A:141:LEU:HD21	1:A:191:TRP:CZ2	2.52	0.44
1:H:38:TRP:CE2	1:H:82:LEU:HB2	2.51	0.44
1:H:141:LEU:HD21	1:H:191:TRP:CZ2	2.51	0.44
1:A:94:LEU:HD23	1:A:94:LEU:HA	1.89	0.44
1:H:171:ALA:HA	1:H:180:MET:HB3	1.99	0.44
1:H:173:LEU:HD13	1:H:178:TYR:CZ	2.53	0.44
1:A:103:ARG:HD2	1:A:105:TYR:CE2	2.53	0.44
2:B:201:ALA:C	4:B:262:HOH:O	2.49	0.44
2:L:116:ALA:HB3	4:L:275:HOH:O	2.18	0.44
1:A:138:SER:H	1:A:187:PRO:HA	1.83	0.44
1:H:150:PRO:CD	4:H:216:HOH:O	2.15	0.44
2:L:72:SER:O	2:L:76:PHE:CE2	2.71	0.44
1:H:188:SER:C	1:H:190:THR:H	2.22	0.43
1:A:171:ALA:HA	1:A:180:MET:HB3	1.99	0.43
1:A:196:VAL:HA	4:A:264:HOH:O	2.18	0.43
2:B:145:TYR:CZ	4:B:222:HOH:O	2.70	0.43
2:L:203:HIS:O	2:L:205:THR:N	2.48	0.43
1:A:183:SER:CA	4:A:240:HOH:O	2.67	0.43
2:L:15:LEU:CD2	2:L:111:LEU:HD11	2.49	0.43
2:L:184:LEU:HD21	2:L:186:LEU:HD23	2.00	0.43
1:A:38:TRP:CE2	1:A:82:LEU:HB2	2.53	0.43
2:L:52:LEU:C	2:L:53:ILE:HG13	2.39	0.43

Continued on next page...

Continued from previous page...

Atom-1	Atom-2	Interatomic distance (Å)	Clash overlap (Å)
1:A:122:PRO:HB2	1:A:145:VAL:HG13	2.00	0.43
2:L:142:ASN:HB3	2:L:143:ASN:OD1	2.18	0.43
1:A:212:LYS:NZ	1:A:212:LYS:HB3	2.33	0.43
2:L:141:LEU:N	2:L:141:LEU:CD1	2.81	0.43
2:L:141:LEU:O	2:L:144:PHE:CE1	2.71	0.43
3:L:225:SPB:O21	4:L:291:HOH:O	2.22	0.43
1:A:172:LEU:HD11	2:B:167:SER:HB2	1.99	0.43
2:B:79:ARG:HB2	2:B:79:ARG:CZ	2.46	0.43
1:H:167:HIS:HE1	2:L:143:ASN:OD1	2.02	0.43
1:A:157:TRP:O	1:A:159:SER:N	2.52	0.43
1:A:173:LEU:HD13	1:A:178:TYR:CZ	2.54	0.43
2:L:200:GLU:HG3	2:L:211:VAL:CG1	2.49	0.42
2:L:78:LEU:CD1	4:L:255:HOH:O	2.59	0.42
2:L:175:ASP:O	2:L:176:SER:HB2	2.19	0.42
1:A:188:SER:C	1:A:190:THR:H	2.23	0.42
2:L:6:GLN:HE22	2:L:92:TYR:HA	1.85	0.42
2:L:53:ILE:HA	2:L:58:ASN:O	2.20	0.42
2:L:96:ASN:HD22	2:L:96:ASN:N	2.13	0.42
2:B:192:GLU:HA	2:B:192:GLU:OE1	2.19	0.42
1:H:122:PRO:HB2	1:H:145:VAL:HG13	2.00	0.42
1:H:158:ASN:HB3	4:H:237:HOH:O	2.19	0.42
1:H:197:THR:HA	1:H:211:LYS:O	2.19	0.42
2:L:195:ASN:C	2:L:195:ASN:ND2	2.73	0.42
2:B:129:GLN:CG	4:B:265:HOH:O	2.68	0.42
2:B:205:THR:O	2:B:206:SER:HB2	2.20	0.42
2:B:129:GLN:HE22	2:B:136:SER:H	1.64	0.42
2:L:122:ILE:HG12	2:L:123:PHE:N	2.35	0.42
1:A:80:LEU:HD23	1:A:80:LEU:HA	1.92	0.42
2:B:31:HIS:HB3	2:B:33:ASN:OD1	2.19	0.42
2:B:122:ILE:HG12	2:B:123:PHE:N	2.35	0.42
1:H:157:TRP:O	1:H:159:SER:N	2.53	0.41
1:H:191:TRP:CZ2	1:H:214:GLU:HG3	2.55	0.41
1:H:193:SER:O	1:H:195:THR:OG1	2.37	0.41
1:H:205:SER:C	1:H:207:THR:N	2.73	0.41
2:L:97:LEU:C	3:L:225:SPB:H192	2.40	0.41
2:L:140:PHE:C	2:L:141:LEU:HD12	2.40	0.41
1:H:200:VAL:O	1:H:208:THR:HA	2.18	0.41
1:A:182:SER:C	4:A:244:HOH:O	2.58	0.41
2:B:15:LEU:CD2	2:B:111:LEU:HD11	2.50	0.41
2:L:207:THR:CG2	2:L:208:SER:H	2.33	0.41
1:A:149:PHE:O	1:A:178:TYR:HD2	2.04	0.41

Continued on next page...

Continued from previous page...

Atom-1	Atom-2	Interatomic distance (Å)	Clash overlap (Å)
1:A:213:LEU:O	1:A:214:GLU:C	2.59	0.41
2:L:63:VAL:HA	2:L:64:PRO:HD2	1.92	0.41
2:L:111:LEU:HB3	2:L:171:GLN:OE1	2.20	0.41
2:L:147:LYS:H	2:L:147:LYS:CD	2.32	0.41
1:A:84:MET:HB3	1:A:87:LEU:HD21	2.03	0.41
1:A:119:THR:HA	1:A:150:PRO:HD3	2.03	0.41
1:A:90:GLU:HB3	4:A:249:HOH:O	2.19	0.41
1:A:213:LEU:N	1:A:213:LEU:HD12	2.36	0.41
1:H:4:LEU:CD2	1:H:24:ALA:HB2	2.44	0.41
2:L:11:ASN:CB	4:L:270:HOH:O	2.68	0.41
2:L:81:ASN:O	2:L:82:THR:C	2.59	0.41
2:L:141:LEU:CA	4:L:252:HOH:O	2.15	0.41
1:A:122:PRO:HB3	1:A:148:TYR:HB3	2.03	0.41
2:B:136:SER:HA	2:B:184:LEU:O	2.21	0.41
2:B:195:ASN:HD22	2:B:195:ASN:H	1.69	0.41
1:H:38:TRP:N	4:H:245:HOH:O	2.51	0.40
2:B:175:ASP:O	2:B:176:SER:HB2	2.20	0.40
2:L:39:TYR:OH	3:L:225:SPB:H10C	2.21	0.40
1:H:84:MET:HB3	1:H:87:LEU:HD21	2.02	0.40
1:H:202:HIS:HB3	1:H:207:THR:HG23	2.04	0.40
2:L:110:GLU:CB	4:L:287:HOH:O	2.68	0.40
2:L:149:ILE:HG13	2:L:203:HIS:HA	2.04	0.40
1:A:128:ALA:HB1	1:A:129:PRO:HD2	2.02	0.40
2:B:146:PRO:HD2	2:B:203:HIS:HE1	1.86	0.40
1:H:125:TYR:CD2	2:L:129:GLN:HG3	2.56	0.40
2:L:110:GLU:CA	4:L:287:HOH:O	2.65	0.40

There are no symmetry-related clashes.

5.3 Torsion angles [i](#)

5.3.1 Protein backbone [i](#)

In the following table, the Percentiles column shows the percent Ramachandran outliers of the chain as a percentile score with respect to all X-ray entries followed by that with respect to entries of similar resolution.

The Analysed column shows the number of residues for which the backbone conformation was analysed, and the total number of residues.

Mol	Chain	Analysed	Favoured	Allowed	Outliers	Percentiles	
1	A	206/208 (99%)	182 (88%)	16 (8%)	8 (4%)	3	1
1	H	206/208 (99%)	178 (86%)	20 (10%)	8 (4%)	3	1
2	B	212/214 (99%)	185 (87%)	21 (10%)	6 (3%)	5	2
2	L	212/214 (99%)	187 (88%)	17 (8%)	8 (4%)	3	1
All	All	836/844 (99%)	732 (88%)	74 (9%)	30 (4%)	3	1

All (30) Ramachandran outliers are listed below:

Mol	Chain	Res	Type
2	L	205	THR
1	H	129	PRO
1	H	195	THR
2	L	133	GLY
2	L	193	ARG
1	A	129	PRO
1	A	158	ASN
1	A	195	THR
2	B	133	GLY
1	H	66	ALA
1	H	149	PHE
1	H	158	ASN
2	L	204	LYS
1	A	66	ALA
1	A	149	PHE
2	B	162	ASN
2	B	193	ARG
2	L	132	SER
2	L	162	ASN
1	H	165	SER
1	H	189	SER
2	L	82	THR
1	A	165	SER
1	A	189	SER
2	B	72	SER
2	L	209	PRO
2	B	100	PRO
1	H	150	PRO
1	A	150	PRO
2	B	209	PRO

5.3.2 Protein sidechains ⓘ

In the following table, the Percentiles column shows the percent sidechain outliers of the chain as a percentile score with respect to all X-ray entries followed by that with respect to entries of similar resolution.

The Analysed column shows the number of residues for which the sidechain conformation was analysed, and the total number of residues.

Mol	Chain	Analysed	Rotameric	Outliers	Percentiles	
1	A	173/173 (100%)	167 (96%)	6 (4%)	36	47
1	H	173/173 (100%)	168 (97%)	5 (3%)	42	53
2	B	188/188 (100%)	174 (93%)	14 (7%)	13	16
2	L	188/188 (100%)	177 (94%)	11 (6%)	19	25
All	All	722/722 (100%)	686 (95%)	36 (5%)	24	32

All (36) residues with a non-rotameric sidechain are listed below:

Mol	Chain	Res	Type
1	H	80	LEU
1	H	82	LEU
1	H	94	LEU
1	H	103	ARG
1	H	208	THR
2	L	52	LEU
2	L	65	ASN
2	L	79	ARG
2	L	96	ASN
2	L	99	LEU
2	L	111	LEU
2	L	147	LYS
2	L	188	LYS
2	L	190	GLU
2	L	195	ASN
2	L	204	LYS
1	A	34	TYR
1	A	80	LEU
1	A	82	LEU
1	A	94	LEU
1	A	103	ARG
1	A	119	THR
2	B	29	LEU
2	B	43	GLN

Continued on next page...

Continued from previous page...

Mol	Chain	Res	Type
2	B	52	LEU
2	B	65	ASN
2	B	79	ARG
2	B	96	ASN
2	B	99	LEU
2	B	103	PHE
2	B	111	LEU
2	B	147	LYS
2	B	186	LEU
2	B	188	LYS
2	B	190	GLU
2	B	195	ASN

Sometimes sidechains can be flipped to improve hydrogen bonding and reduce clashes. All (22) such sidechains are listed below:

Mol	Chain	Res	Type
1	H	101	GLN
1	H	167	HIS
2	L	6	GLN
2	L	43	GLN
2	L	55	GLN
2	L	58	ASN
2	L	65	ASN
2	L	96	ASN
2	L	171	GLN
2	L	195	ASN
2	L	203	HIS
1	A	101	GLN
1	A	167	HIS
1	A	202	HIS
2	B	6	GLN
2	B	43	GLN
2	B	58	ASN
2	B	65	ASN
2	B	96	ASN
2	B	129	GLN
2	B	171	GLN
2	B	195	ASN

5.3.3 RNA ⓘ

There are no RNA molecules in this entry.

5.4 Non-standard residues in protein, DNA, RNA chains ⓘ

There are no non-standard protein/DNA/RNA residues in this entry.

5.5 Carbohydrates ⓘ

There are no monosaccharides in this entry.

5.6 Ligand geometry ⓘ

2 ligands are modelled in this entry.

In the following table, the Counts columns list the number of bonds (or angles) for which Mogul statistics could be retrieved, the number of bonds (or angles) that are observed in the model and the number of bonds (or angles) that are defined in the Chemical Component Dictionary. The Link column lists molecule types, if any, to which the group is linked. The Z score for a bond length (or angle) is the number of standard deviations the observed value is removed from the expected value. A bond length (or angle) with $|Z| > 2$ is considered an outlier worth inspection. RMSZ is the root-mean-square of all Z scores of the bond lengths (or angles).

Mol	Type	Chain	Res	Link	Bond lengths			Bond angles		
					Counts	RMSZ	# $ Z > 2$	Counts	RMSZ	# $ Z > 2$
3	SPB	L	225	-	24,24,24	1.80	4 (16%)	30,30,30	1.61	4 (13%)
3	SPB	A	226	-	24,24,24	1.79	4 (16%)	30,30,30	1.59	3 (10%)

In the following table, the Chirals column lists the number of chiral outliers, the number of chiral centers analysed, the number of these observed in the model and the number defined in the Chemical Component Dictionary. Similar counts are reported in the Torsion and Rings columns. '-' means no outliers of that kind were identified.

Mol	Type	Chain	Res	Link	Chirals	Torsions	Rings
3	SPB	L	225	-	-	2/15/15/15	0/2/2/2
3	SPB	A	226	-	-	2/15/15/15	0/2/2/2

All (8) bond length outliers are listed below:

Mol	Chain	Res	Type	Atoms	Z	Observed(Å)	Ideal(Å)
3	L	225	SPB	O21-C20	5.14	1.39	1.22

Continued on next page...

Continued from previous page...

Mol	Chain	Res	Type	Atoms	Z	Observed(Å)	Ideal(Å)
3	A	226	SPB	O21-C20	4.77	1.37	1.22
3	A	226	SPB	C14-C13	3.01	1.44	1.38
3	A	226	SPB	O23-C20	-2.98	1.20	1.30
3	L	225	SPB	C13-C12	2.88	1.44	1.39
3	L	225	SPB	C14-C13	2.85	1.43	1.38
3	L	225	SPB	O23-C20	-2.55	1.22	1.30
3	A	226	SPB	C13-C12	2.38	1.43	1.39

All (7) bond angle outliers are listed below:

Mol	Chain	Res	Type	Atoms	Z	Observed(°)	Ideal(°)
3	A	226	SPB	C12-N15-C16	5.71	137.48	127.50
3	L	225	SPB	C12-N15-C16	4.83	135.95	127.50
3	L	225	SPB	O21-C20-C19	-4.03	110.14	123.08
3	A	226	SPB	O21-C20-C19	-3.57	111.61	123.08
3	L	225	SPB	O23-C20-C19	3.04	123.78	114.03
3	A	226	SPB	O23-C20-C19	2.63	122.50	114.03
3	L	225	SPB	C5-C6-C1	2.04	120.66	117.64

There are no chirality outliers.

All (4) torsion outliers are listed below:

Mol	Chain	Res	Type	Atoms
3	L	225	SPB	C18-C19-C20-O23
3	L	225	SPB	C18-C19-C20-O21
3	A	226	SPB	C18-C19-C20-O21
3	A	226	SPB	C18-C19-C20-O23

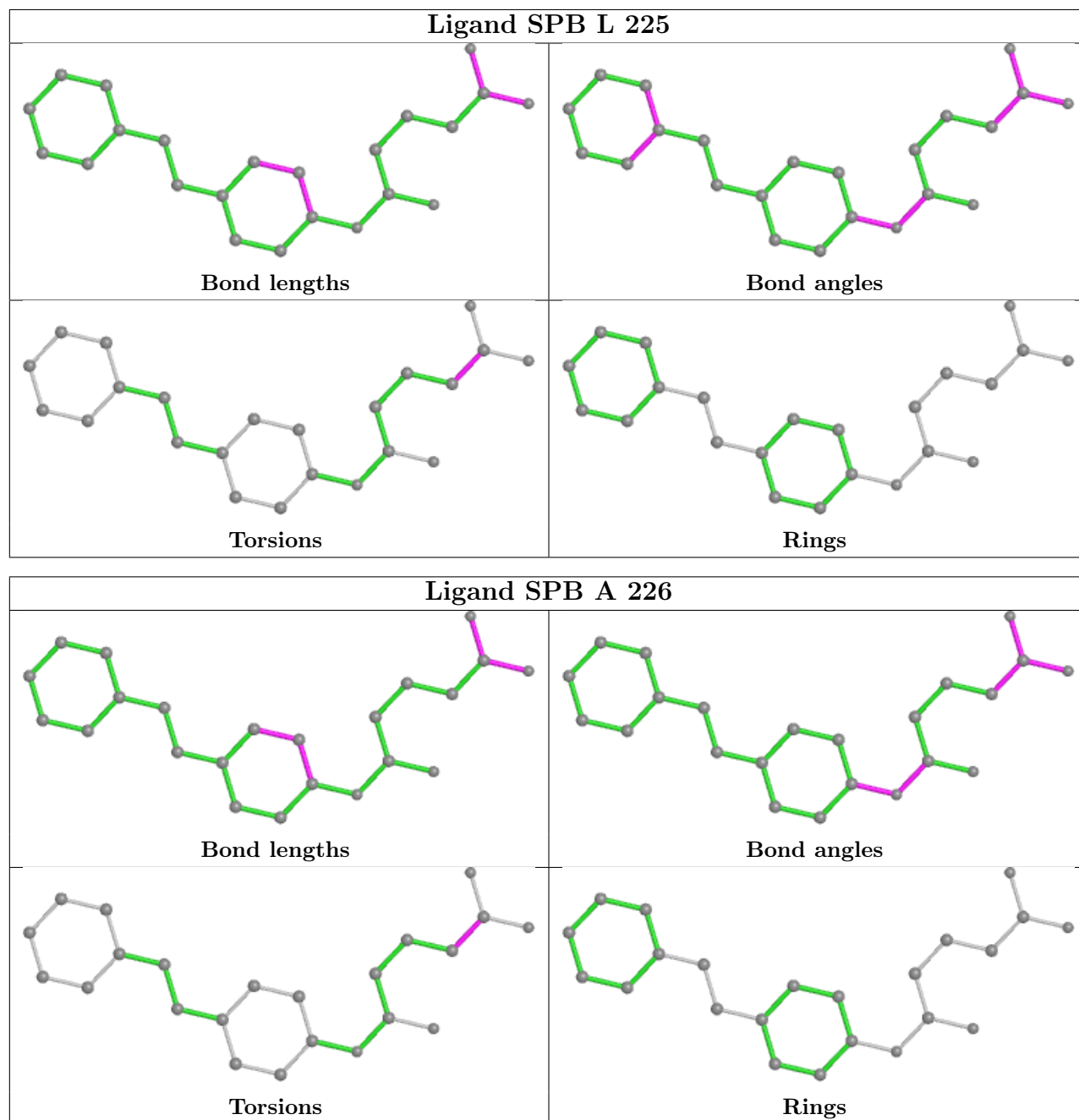
There are no ring outliers.

1 monomer is involved in 5 short contacts:

Mol	Chain	Res	Type	Clashes	Symm-Clashes
3	L	225	SPB	5	0

The following is a two-dimensional graphical depiction of Mogul quality analysis of bond lengths, bond angles, torsion angles, and ring geometry for all instances of the Ligand of Interest. In addition, ligands with molecular weight > 250 and outliers as shown on the validation Tables will also be included. For torsion angles, if less than 5% of the Mogul distribution of torsion angles is within 10 degrees of the torsion angle in question, then that torsion angle is considered an outlier. Any bond that is central to one or more torsion angles identified as an outlier by Mogul will be highlighted in the graph. For rings, the root-mean-square deviation (RMSD) between the ring

in question and similar rings identified by Mogul is calculated over all ring torsion angles. If the average RMSD is greater than 60 degrees and the minimal RMSD between the ring in question and any Mogul-identified rings is also greater than 60 degrees, then that ring is considered an outlier. The outliers are highlighted in purple. The color gray indicates Mogul did not find sufficient equivalents in the CSD to analyse the geometry.



5.7 Other polymers ⓘ

There are no such residues in this entry.

5.8 Polymer linkage issues ⓘ

There are no chain breaks in this entry.

6 Fit of model and data ⓘ

6.1 Protein, DNA and RNA chains ⓘ

In the following table, the column labelled ‘#RSRZ > 2’ contains the number (and percentage) of RSRZ outliers, followed by percent RSRZ outliers for the chain as percentile scores relative to all X-ray entries and entries of similar resolution. The OWAB column contains the minimum, median, 95th percentile and maximum values of the occupancy-weighted average B-factor per residue. The column labelled ‘Q < 0.9’ lists the number of (and percentage) of residues with an average occupancy less than 0.9.

Mol	Chain	Analysed	<RSRZ>	#RSRZ>2	OWAB(Å ²)	Q<0.9
1	A	208/208 (100%)	0.71	32 (15%) 2 1	17, 49, 121, 143	0
1	H	208/208 (100%)	0.39	17 (8%) 11 8	23, 52, 112, 159	0
2	B	214/214 (100%)	0.62	21 (9%) 7 5	24, 65, 121, 140	0
2	L	214/214 (100%)	0.28	8 (3%) 41 38	20, 49, 107, 140	0
All	All	844/844 (100%)	0.50	78 (9%) 9 6	17, 53, 116, 159	0

All (78) RSRZ outliers are listed below:

Mol	Chain	Res	Type	RSRZ
1	H	136	GLY	8.3
1	H	134	THR	8.1
1	A	132	GLY	7.9
1	A	134	THR	7.7
1	A	130	GLY	7.5
1	A	139	VAL	6.8
1	H	135	THR	6.5
1	A	141	LEU	6.1
2	B	197	TYR	6.0
1	A	131	CYS	5.6
2	B	205	THR	5.6
1	H	133	ASP	5.4
1	A	135	THR	5.4
1	A	186	VAL	5.2
1	A	191	TRP	5.0
1	A	196	VAL	4.9
1	A	187	PRO	4.7
2	B	140	PHE	4.7
1	A	188	SER	4.5
1	A	129	PRO	4.4
2	B	201	ALA	4.3

Continued on next page...

Continued from previous page...

Mol	Chain	Res	Type	RSRZ
1	A	160	GLY	4.3
1	A	138	SER	4.2
1	A	159	SER	4.1
1	A	136	GLY	4.1
2	L	99	LEU	4.1
2	B	99	LEU	4.0
1	A	128	ALA	4.0
1	A	189	SER	3.9
1	H	191	TRP	3.9
1	H	159	SER	3.8
1	H	164	SER	3.8
1	A	137	SER	3.7
2	B	122	ILE	3.7
2	L	205	THR	3.6
1	H	132	GLY	3.4
1	A	133	ASP	3.4
1	H	161	GLY	3.4
1	H	160	GLY	3.4
2	B	151	VAL	3.3
1	A	192	PRO	3.3
2	L	204	LYS	3.1
2	B	159	GLU	3.0
2	B	208	SER	3.0
2	B	152	LYS	2.9
2	B	163	GLY	2.8
1	A	185	THR	2.8
2	B	203	HIS	2.8
2	L	159	GLU	2.8
1	A	164	SER	2.7
1	H	129	PRO	2.7
1	A	213	LEU	2.6
1	H	130	GLY	2.6
1	A	190	THR	2.5
2	L	155	ILE	2.5
1	H	45	LYS	2.5
1	H	165	SER	2.4
2	B	210	ILE	2.4
2	B	72	SER	2.4
2	L	199	CYS	2.4
2	B	118	PRO	2.3
1	A	66	ALA	2.3
2	B	202	THR	2.3

Continued on next page...

Continued from previous page...

Mol	Chain	Res	Type	RSRZ
2	L	120	VAL	2.3
1	H	131	CYS	2.2
1	A	193	SER	2.2
1	A	144	LEU	2.2
2	B	120	VAL	2.2
2	B	199	CYS	2.2
2	L	162	ASN	2.1
1	A	140	THR	2.1
2	B	79	ARG	2.1
1	A	211	LYS	2.1
2	B	121	SER	2.1
1	H	137	SER	2.0
1	A	166	VAL	2.0
2	B	160	ARG	2.0
1	H	139	VAL	2.0

6.2 Non-standard residues in protein, DNA, RNA chains [i](#)

There are no non-standard protein/DNA/RNA residues in this entry.

6.3 Carbohydrates [i](#)

There are no monosaccharides in this entry.

6.4 Ligands [i](#)

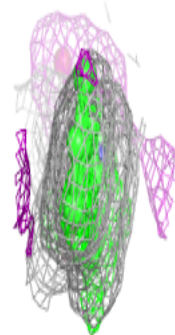
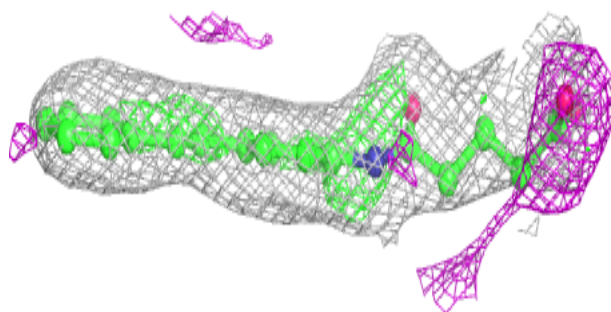
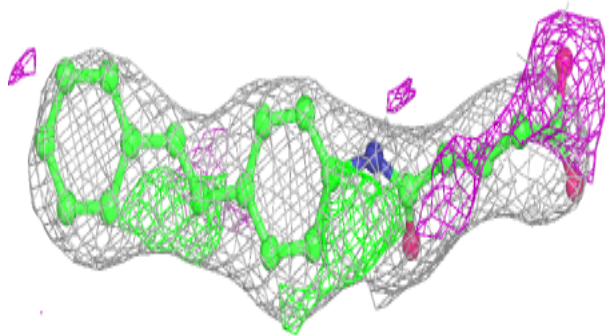
In the following table, the Atoms column lists the number of modelled atoms in the group and the number defined in the chemical component dictionary. The B-factors column lists the minimum, median, 95th percentile and maximum values of B factors of atoms in the group. The column labelled 'Q< 0.9' lists the number of atoms with occupancy less than 0.9.

Mol	Type	Chain	Res	Atoms	RSCC	RSR	B-factors(\AA^2)	Q<0.9
3	SPB	L	225	23/23	0.80	0.33	50,50,50,50	0
3	SPB	A	226	23/23	0.88	0.26	50,50,50,50	0

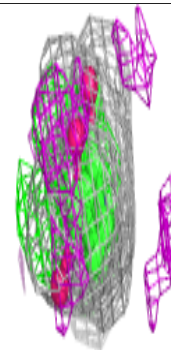
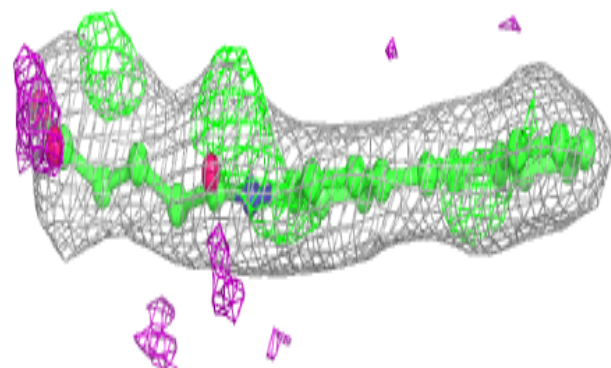
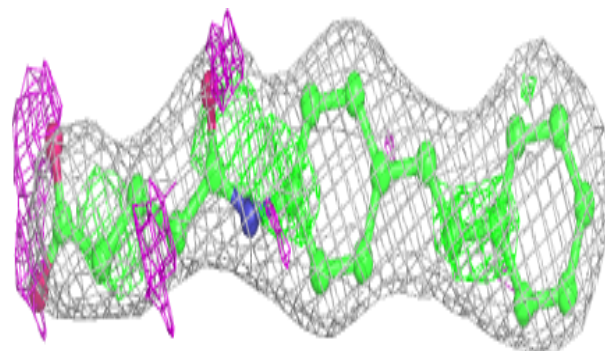
The following is a graphical depiction of the model fit to experimental electron density of all instances of the Ligand of Interest. In addition, ligands with molecular weight > 250 and outliers as shown on the geometry validation Tables will also be included. Each fit is shown from different orientation to approximate a three-dimensional view.

Electron density around SPB L 225:

$2mF_o-DF_c$ (at 0.7 rmsd) in gray
 mF_o-DF_c (at 3 rmsd) in purple (negative)
and green (positive)

**Electron density around SPB A 226:**

$2mF_o-DF_c$ (at 0.7 rmsd) in gray
 mF_o-DF_c (at 3 rmsd) in purple (negative)
and green (positive)



6.5 Other polymers [i](#)

There are no such residues in this entry.