



# Full wwPDB X-ray Structure Validation Report ⓘ

Apr 21, 2025 – 01:27 PM EDT

PDB ID : 7FN5 / pdb\_00007fn5  
Title : PanDDA analysis group deposition – Aar2/RNaseH in complex with fragment P06H04 from the F2X-Universal Library  
Authors : Barthel, T.; Wollenhaupt, J.; Lima, G.M.A.; Wahl, M.C.; Weiss, M.S.  
Deposited on : 2022-08-26  
Resolution : 1.69 Å(reported)

This is a Full wwPDB X-ray Structure Validation Report for a publicly released PDB entry.

We welcome your comments at [validation@mail.wwpdb.org](mailto:validation@mail.wwpdb.org)

A user guide is available at

<https://www.wwpdb.org/validation/2017/XrayValidationReportHelp>

with specific help available everywhere you see the ⓘ symbol.

The types of validation reports are described at

<http://www.wwpdb.org/validation/2017/FAQs#types>.

---

The following versions of software and data (see [references ⓘ](#)) were used in the production of this report:

MolProbity : 4.02b-467  
Mogul : 2022.3.0, CSD as543be (2022)  
Xtriage (Phenix) : 2.0rc1  
EDS : 3.0  
Percentile statistics : 20231227.v01 (using entries in the PDB archive December 27th 2023)  
CCP4 : 9.0.006 (Gargrove)  
Density-Fitness : 1.0.12  
Ideal geometry (proteins) : Engh & Huber (2001)  
Ideal geometry (DNA, RNA) : Parkinson et al. (1996)  
Validation Pipeline (wwPDB-VP) : 2.42

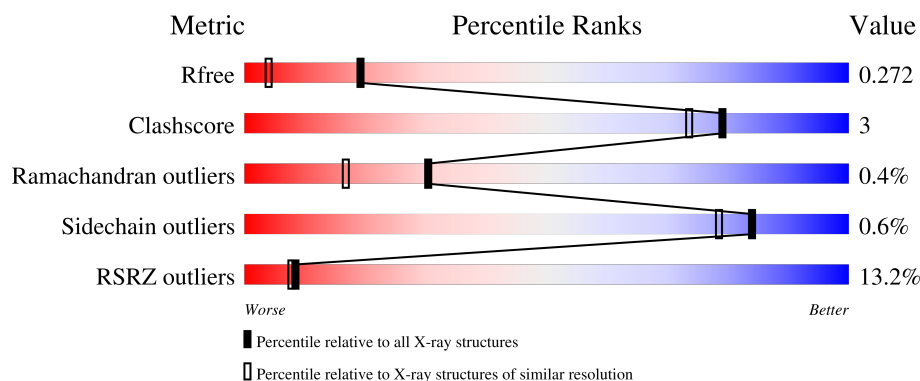
# 1 Overall quality at a glance

The following experimental techniques were used to determine the structure:

*X-RAY DIFFRACTION*

The reported resolution of this entry is 1.69 Å.

Percentile scores (ranging between 0-100) for global validation metrics of the entry are shown in the following graphic. The table shows the number of entries on which the scores are based.



Metric	Whole archive (#Entries)	Similar resolution (#Entries, resolution range(Å))
$R_{free}$	164625	5161 (1.70-1.70)
Clashscore	180529	5671 (1.70-1.70)
Ramachandran outliers	177936	5594 (1.70-1.70)
Sidechain outliers	177891	5594 (1.70-1.70)
RSRZ outliers	164620	5159 (1.70-1.70)

The table below summarises the geometric issues observed across the polymeric chains and their fit to the electron density. The red, orange, yellow and green segments of the lower bar indicate the fraction of residues that contain outliers for  $\geq 3$ , 2, 1 and 0 types of geometric quality criteria respectively. A grey segment represents the fraction of residues that are not modelled. The numeric value for each fraction is indicated below the corresponding segment, with a dot representing fractions  $\leq 5\%$ . The upper red bar (where present) indicates the fraction of residues that have poor fit to the electron density. The numeric value is given above the bar.

Mol	Chain	Length	Quality of chain
1	A	258	
2	B	308	

## 2 Entry composition

There are 4 unique types of molecules in this entry. The entry contains 9208 atoms, of which 4524 are hydrogens and 0 are deuteriums.

In the tables below, the ZeroOcc column contains the number of atoms modelled with zero occupancy, the AltConf column contains the number of residues with at least one atom in alternate conformation and the Trace column contains the number of residues modelled with at most 2 atoms.

- Molecule 1 is a protein called Pre-mRNA-splicing factor 8.

Mol	Chain	Residues	Atoms						ZeroOcc	AltConf	Trace
			Total	C	H	N	O	S			
1	A	237	4068	1287	2060	336	373	12	0	21	0

There are 3 discrepancies between the modelled and reference sequences:

Chain	Residue	Modelled	Actual	Comment	Reference
A	1833	GLY	-	expression tag	UNP P33334
A	1834	ALA	-	expression tag	UNP P33334
A	1835	MET	-	expression tag	UNP P33334

- Molecule 2 is a protein called A1 cistron-splicing factor AAR2.

Mol	Chain	Residues	Atoms						ZeroOcc	AltConf	Trace
			Total	C	H	N	O	S			
2	B	300	5044	1654	2464	421	485	20	11	17	0

There are 20 discrepancies between the modelled and reference sequences:

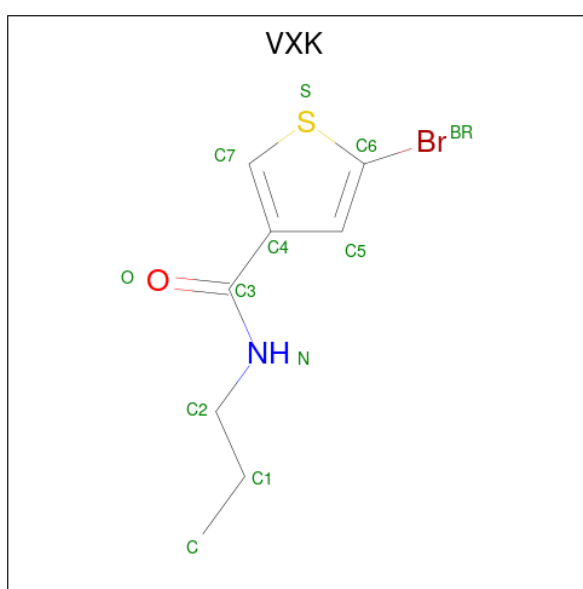
Chain	Residue	Modelled	Actual	Comment	Reference
B	-3	GLY	-	expression tag	UNP P32357
B	-2	ALA	-	expression tag	UNP P32357
B	-1	MET	-	expression tag	UNP P32357
B	0	ALA	-	expression tag	UNP P32357
B	166	SER	LEU	conflict	UNP P32357
B	167	SER	LYS	conflict	UNP P32357
B	?	-	LEU	deletion	UNP P32357
B	?	-	GLN	deletion	UNP P32357
B	?	-	LYS	deletion	UNP P32357
B	?	-	ALA	deletion	UNP P32357
B	?	-	GLY	deletion	UNP P32357
B	?	-	SER	deletion	UNP P32357
B	?	-	LYS	deletion	UNP P32357

*Continued on next page...*

Continued from previous page...

Chain	Residue	Modelled	Actual	Comment	Reference
B	?	-	MET	deletion	UNP P32357
B	?	-	GLU	deletion	UNP P32357
B	?	-	ALA	deletion	UNP P32357
B	?	-	LYS	deletion	UNP P32357
B	?	-	ASN	deletion	UNP P32357
B	?	-	GLU	deletion	UNP P32357
B	170	SER	ASP	conflict	UNP P32357

- Molecule 3 is 5-bromo-N-propylthiophene-3-carboxamide (CCD ID: VVK) (formula:  $C_8H_{10}BrNOS$ ).



Mol	Chain	Residues	Atoms					ZeroOcc	AltConf
3	B	1	Total	Br	C	N	O	S	
			12	1	8	1	1	1	

- Molecule 4 is water.

Mol	Chain	Residues	Atoms		ZeroOcc	AltConf
4	A	39	Total	O		
			39	39	0	0
4	B	45	Total	O		
			45	45	0	0



## 4 Data and refinement statistics

Property	Value	Source
Space group	C 1 2 1	Depositor
Cell constants a, b, c, $\alpha$ , $\beta$ , $\gamma$	88.75Å 81.98Å 93.25Å 90.00° 108.21° 90.00°	Depositor
Resolution (Å)	44.29 – 1.69 44.29 – 1.70	Depositor EDS
% Data completeness (in resolution range)	98.8 (44.29-1.69) 98.8 (44.29-1.70)	Depositor EDS
$R_{merge}$	(Not available)	Depositor
$R_{sym}$	(Not available)	Depositor
$\langle I/\sigma(I) \rangle$ <sup>1</sup>	0.97 (at 1.70Å)	Xtriage
Refinement program	PHENIX 1.17.1 _3660	Depositor
R, $R_{free}$	0.206 , 0.259 0.222 , 0.272	Depositor DCC
$R_{free}$ test set	2098 reflections (3.02%)	wwPDB-VP
Wilson B-factor (Å <sup>2</sup> )	38.7	Xtriage
Anisotropy	0.348	Xtriage
Bulk solvent $k_{sol}$ (e/Å <sup>3</sup> ), $B_{sol}$ (Å <sup>2</sup> )	0.42 , 44.3	EDS
L-test for twinning <sup>2</sup>	$\langle  L  \rangle = 0.50$ , $\langle L^2 \rangle = 0.34$	Xtriage
Estimated twinning fraction	No twinning to report.	Xtriage
$F_o, F_c$ correlation	0.96	EDS
Total number of atoms	9208	wwPDB-VP
Average B, all atoms (Å <sup>2</sup> )	61.0	wwPDB-VP

Xtriage's analysis on translational NCS is as follows: *The largest off-origin peak in the Patterson function is 5.67% of the height of the origin peak. No significant pseudotranslation is detected.*

<sup>1</sup>Intensities estimated from amplitudes.

<sup>2</sup>Theoretical values of  $\langle |L| \rangle$ ,  $\langle L^2 \rangle$  for acentric reflections are 0.5, 0.333 respectively for untwinned datasets, and 0.375, 0.2 for perfectly twinned datasets.

## 5 Model quality [i](#)

### 5.1 Standard geometry [i](#)

Bond lengths and bond angles in the following residue types are not validated in this section: VXX

The Z score for a bond length (or angle) is the number of standard deviations the observed value is removed from the expected value. A bond length (or angle) with  $|Z| > 5$  is considered an outlier worth inspection. RMSZ is the root-mean-square of all Z scores of the bond lengths (or angles).

Mol	Chain	Bond lengths		Bond angles	
		RMSZ	$\# Z  > 5$	RMSZ	$\# Z  > 5$
1	A	0.53	1/2149 (0.0%)	0.66	0/2911
2	B	0.57	0/2739	0.69	2/3699 (0.1%)
All	All	0.55	1/4888 (0.0%)	0.68	2/6610 (0.0%)

All (1) bond length outliers are listed below:

Mol	Chain	Res	Type	Atoms	Z	Observed(Å)	Ideal(Å)
1	A	1878	CYS	CB-SG	-5.38	1.73	1.81

All (2) bond angle outliers are listed below:

Mol	Chain	Res	Type	Atoms	Z	Observed(°)	Ideal(°)
2	B	123[A]	MET	CG-SD-CE	5.12	108.39	100.20
2	B	123[B]	MET	CG-SD-CE	5.12	108.39	100.20

There are no chirality outliers.

There are no planarity outliers.

### 5.2 Too-close contacts [i](#)

In the following table, the Non-H and H(model) columns list the number of non-hydrogen atoms and hydrogen atoms in the chain respectively. The H(added) column lists the number of hydrogen atoms added and optimized by MolProbity. The Clashes column lists the number of clashes within the asymmetric unit, whereas Symm-Clashes lists symmetry-related clashes.

Mol	Chain	Non-H	H(model)	H(added)	Clashes	Symm-Clashes
1	A	2008	2060	1974	8	0
2	B	2580	2464	2398	16	0
3	B	12	0	0	0	0

*Continued on next page...*

*Continued from previous page...*

Mol	Chain	Non-H	H(model)	H(added)	Clashes	Symm-Clashes
4	A	39	0	0	0	0
4	B	45	0	0	1	0
All	All	4684	4524	4372	24	0

The all-atom clashscore is defined as the number of clashes found per 1000 atoms (including hydrogen atoms). The all-atom clashscore for this structure is 3.

All (24) close contacts within the same asymmetric unit are listed below, sorted by their clash magnitude.

Atom-1	Atom-2	Interatomic distance (Å)	Clash overlap (Å)
1:A:2061:THR:O	1:A:2064:GLY:N	2.22	0.72
1:A:2064:GLY:O	1:A:2068:ASN:N	2.32	0.61
2:B:77:LEU:HD21	2:B:79:LYS:HE3	1.86	0.57
2:B:287:ARG:O	2:B:291:ILE:HD13	2.05	0.56
1:A:1848:ILE:H	1:A:1931[A]:LYS:HZ2	1.56	0.53
2:B:1:MET:N	4:B:501:HOH:O	2.41	0.53
2:B:1:MET:HB3	2:B:35:ASP:HA	1.93	0.50
1:A:1859:ARG:HH12	1:A:1979[A]:MET:CE	2.26	0.49
2:B:258:LYS:HD2	2:B:258:LYS:H	1.80	0.46
2:B:69:ILE:HD13	2:B:80:MET:HA	1.98	0.46
1:A:1895:HIS:O	1:A:1898[A]:VAL:HG22	2.16	0.45
2:B:37:PRO:HD3	2:B:105:TYR:CD1	2.52	0.45
2:B:4:VAL:HG11	2:B:44[B]:ILE:CD1	2.48	0.44
1:A:1962:ARG:HD3	1:A:1962:ARG:H	1.83	0.43
2:B:277:GLU:CD	2:B:277:GLU:H	2.21	0.43
1:A:1962:ARG:O	1:A:2013:ARG:NH1	2.52	0.43
2:B:68:TYR:CE1	2:B:81:MET:HB2	2.54	0.43
1:A:1843:LEU:HA	1:A:1849:LYS:HD2	2.01	0.42
2:B:12:GLU:HG3	2:B:25:LYS:HA	2.01	0.42
2:B:17:ILE:HD13	2:B:44[B]:ILE:CG1	2.50	0.41
2:B:91:ASN:HD22	2:B:91:ASN:HA	1.75	0.40
2:B:92:ILE:HD13	2:B:92:ILE:HA	1.81	0.40

There are no symmetry-related clashes.



## 5.3 Torsion angles ⓘ

### 5.3.1 Protein backbone ⓘ

In the following table, the Percentiles column shows the percent Ramachandran outliers of the chain as a percentile score with respect to all X-ray entries followed by that with respect to entries of similar resolution.

The Analysed column shows the number of residues for which the backbone conformation was analysed, and the total number of residues.

Mol	Chain	Analysed	Favoured	Allowed	Outliers	Percentiles	
1	A	258/258 (100%)	250 (97%)	7 (3%)	1 (0%)	30	17
2	B	315/308 (102%)	304 (96%)	10 (3%)	1 (0%)	37	23
All	All	573/566 (101%)	554 (97%)	17 (3%)	2 (0%)	30	23

All (2) Ramachandran outliers are listed below:

Mol	Chain	Res	Type
1	A	2061	THR
2	B	106	PRO

### 5.3.2 Protein sidechains ⓘ

In the following table, the Percentiles column shows the percent sidechain outliers of the chain as a percentile score with respect to all X-ray entries followed by that with respect to entries of similar resolution.

The Analysed column shows the number of residues for which the sidechain conformation was analysed, and the total number of residues.

Mol	Chain	Analysed	Rotameric	Outliers	Percentiles	
1	A	237/233 (102%)	233 (98%)	4 (2%)	56	41
2	B	294/284 (104%)	293 (100%)	1 (0%)	91	88
All	All	531/517 (103%)	526 (99%)	5 (1%)	84	67

All (5) residues with a non-rotameric sidechain are listed below:

Mol	Chain	Res	Type
1	A	1962	ARG
1	A	1979[A]	MET
1	A	1979[B]	MET
1	A	1979[C]	MET

*Continued on next page...*

*Continued from previous page...*

Mol	Chain	Res	Type
2	B	91	ASN

Sometimes sidechains can be flipped to improve hydrogen bonding and reduce clashes. All (1) such sidechains are listed below:

Mol	Chain	Res	Type
2	B	91	ASN

### 5.3.3 RNA ⓘ

There are no RNA molecules in this entry.

## 5.4 Non-standard residues in protein, DNA, RNA chains ⓘ

There are no non-standard protein/DNA/RNA residues in this entry.

## 5.5 Carbohydrates ⓘ

There are no oligosaccharides in this entry.

## 5.6 Ligand geometry ⓘ

1 ligand is modelled in this entry.

In the following table, the Counts columns list the number of bonds (or angles) for which Mogul statistics could be retrieved, the number of bonds (or angles) that are observed in the model and the number of bonds (or angles) that are defined in the Chemical Component Dictionary. The Link column lists molecule types, if any, to which the group is linked. The Z score for a bond length (or angle) is the number of standard deviations the observed value is removed from the expected value. A bond length (or angle) with  $|Z| > 2$  is considered an outlier worth inspection. RMSZ is the root-mean-square of all Z scores of the bond lengths (or angles).

Mol	Type	Chain	Res	Link	Bond lengths			Bond angles		
					Counts	RMSZ	# Z  > 2	Counts	RMSZ	# Z  > 2
3	VXK	B	401	-	10,12,12	2.10	3 (30%)	8,15,15	1.59	1 (12%)

In the following table, the Chirals column lists the number of chiral outliers, the number of chiral centers analysed, the number of these observed in the model and the number defined in the Chemical Component Dictionary. Similar counts are reported in the Torsion and Rings columns. '2' means no outliers of that kind were identified.

Mol	Type	Chain	Res	Link	Chirals	Torsions	Rings
3	VXK	B	401	-	-	0/8/8/8	0/1/1/1

All (3) bond length outliers are listed below:

Mol	Chain	Res	Type	Atoms	Z	Observed(Å)	Ideal(Å)
3	B	401	VXK	C7-C4	5.01	1.40	1.37
3	B	401	VXK	C4-C3	-2.48	1.44	1.50
3	B	401	VXK	C3-N	2.02	1.38	1.33

All (1) bond angle outliers are listed below:

Mol	Chain	Res	Type	Atoms	Z	Observed(°)	Ideal(°)
3	B	401	VXK	C4-C7-S	4.37	115.11	112.29

There are no chirality outliers.

There are no torsion outliers.

There are no ring outliers.

No monomer is involved in short contacts.

## 5.7 Other polymers [i](#)

There are no such residues in this entry.

## 5.8 Polymer linkage issues [i](#)

There are no chain breaks in this entry.

## 6 Fit of model and data

### 6.1 Protein, DNA and RNA chains

In the following table, the column labelled ‘#RSRZ> 2’ contains the number (and percentage) of RSRZ outliers, followed by percent RSRZ outliers for the chain as percentile scores relative to all X-ray entries and entries of similar resolution. The OWAB column contains the minimum, median, 95<sup>th</sup> percentile and maximum values of the occupancy-weighted average B-factor per residue. The column labelled ‘Q< 0.9’ lists the number of (and percentage) of residues with an average occupancy less than 0.9.

Mol	Chain	Analysed	<RSRZ>	#RSRZ>2		OWAB(Å <sup>2</sup> )	Q<0.9
1	A	237/258 (91%)	0.81	28 (11%)	10 10	17, 52, 108, 144	12 (5%)
2	B	300/308 (97%)	0.93	43 (14%)	7 6	17, 53, 105, 183	9 (3%)
All	All	537/566 (94%)	0.88	71 (13%)	8 8	17, 53, 107, 183	21 (3%)

All (71) RSRZ outliers are listed below:

Mol	Chain	Res	Type	RSRZ
1	A	2060	LEU	7.0
2	B	152	LEU	6.4
1	A	2069	VAL	6.1
1	A	1979[A]	MET	6.1
2	B	54[A]	MET	5.6
2	B	170	SER	5.5
2	B	101	MET	5.4
1	A	2067	TYR	5.0
1	A	2061	THR	4.9
2	B	111	ASP	4.9
1	A	2063	TYR	4.8
2	B	96	PHE	4.5
2	B	108	ILE	4.2
1	A	2033	THR	4.0
2	B	316	LEU	4.0
2	B	172	PRO	4.0
1	A	2065	ARG	3.9
2	B	174	HIS	3.9
1	A	2017[A]	THR	3.9
1	A	2064	GLY	3.8
1	A	1840	TYR	3.8
1	A	2027	LEU	3.5
1	A	1833	GLY	3.5
2	B	282	ILE	3.5

*Continued on next page...*

*Continued from previous page...*

Mol	Chain	Res	Type	RSRZ
2	B	275	LEU	3.4
1	A	2028	SER	3.3
1	A	2068	ASN	3.3
2	B	1	MET	3.3
1	A	2032	ILE	3.1
1	A	1834	ALA	3.1
1	A	1835	MET	2.8
2	B	279	TYR	2.8
2	B	106	PRO	2.7
2	B	317	LEU	2.7
2	B	171	ASP	2.7
1	A	1839	ASN	2.6
2	B	91	ASN	2.6
1	A	1837	SER	2.6
2	B	281	ASP	2.6
1	A	2030	PRO	2.6
1	A	1873	LYS	2.5
1	A	2066	LYS	2.5
2	B	87	ALA	2.5
2	B	7	THR	2.5
1	A	1841	ALA	2.5
2	B	283	LEU	2.5
2	B	294	TYR	2.5
2	B	53	SER	2.4
2	B	31	HIS	2.4
2	B	136	GLN	2.4
2	B	103	VAL	2.4
2	B	38	ILE	2.3
1	A	1836	ASN	2.3
2	B	180	VAL	2.3
2	B	89	PHE	2.2
2	B	130	VAL	2.2
2	B	81	MET	2.2
2	B	173	ALA	2.2
1	A	1863	HIS	2.2
1	A	1866	PHE	2.2
2	B	146	THR	2.2
2	B	258	LYS	2.2
2	B	107	LYS	2.1
2	B	50	ASP	2.1
2	B	109	ASP	2.1
2	B	203[A]	TYR	2.1

*Continued on next page...*

*Continued from previous page...*

Mol	Chain	Res	Type	RSRZ
2	B	280	SER	2.1
2	B	122[A]	GLN	2.1
2	B	277	GLU	2.1
1	A	1962	ARG	2.0
2	B	4	VAL	2.0

## 6.2 Non-standard residues in protein, DNA, RNA chains [i](#)

There are no non-standard protein/DNA/RNA residues in this entry.

## 6.3 Carbohydrates [i](#)

There are no monosaccharides in this entry.

## 6.4 Ligands [i](#)

In the following table, the Atoms column lists the number of modelled atoms in the group and the number defined in the chemical component dictionary. The B-factors column lists the minimum, median, 95<sup>th</sup> percentile and maximum values of B factors of atoms in the group. The column labelled 'Q< 0.9' lists the number of atoms with occupancy less than 0.9.

Mol	Type	Chain	Res	Atoms	RSCC	RSR	B-factors(Å <sup>2</sup> )	Q<0.9
3	VXK	B	401	12/12	0.75	0.33	20,20,20,20	12

## 6.5 Other polymers [i](#)

There are no such residues in this entry.