



Full wwPDB X-ray Structure Validation Report ⓘ

May 3, 2025 – 03:19 PM EDT

PDB ID : 3FPX / pdb_00003fpx
Title : Native fungus laccase from Trametes hirsuta
Authors : Polyakov, K.M.; Fedorova, T.V.; Stepanova, E.V.; Cherkashin, E.A.; Kurzeev, S.A.; Strokopytov, B.V.; Lamzin, V.S.; Koroleva, O.V.
Deposited on : 2009-01-06
Resolution : 1.80 Å(reported)

This is a Full wwPDB X-ray Structure Validation Report for a publicly released PDB entry.

We welcome your comments at validation@mail.wwpdb.org

A user guide is available at

<https://www.wwpdb.org/validation/2017/XrayValidationReportHelp>

with specific help available everywhere you see the ⓘ symbol.

The types of validation reports are described at

<http://www.wwpdb.org/validation/2017/FAQs#types>.

The following versions of software and data (see [references ⓘ](#)) were used in the production of this report:

MolProbity : 4-5-2 with Phenix2.0rc1
Mogul : 2022.3.0, CSD as543be (2022)
Xtriage (Phenix) : 2.0rc1
EDS : 3.0
Percentile statistics : 20231227.v01 (using entries in the PDB archive December 27th 2023)
CCP4 : 9.0.006 (Gargrove)
Density-Fitness : 1.0.12
Ideal geometry (proteins) : Engh & Huber (2001)
Ideal geometry (DNA, RNA) : Parkinson et al. (1996)
Validation Pipeline (wwPDB-VP) : 2.43.1

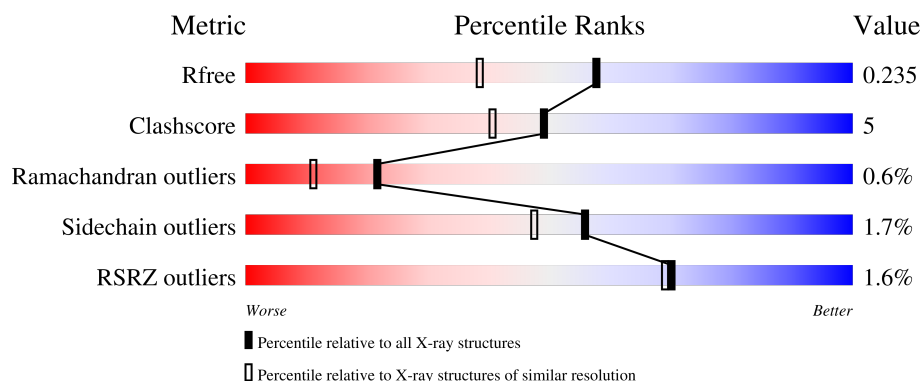
1 Overall quality at a glance

The following experimental techniques were used to determine the structure:

X-RAY DIFFRACTION



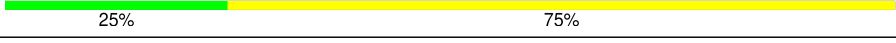
The reported resolution of this entry is 1.80 Å.

Percentile scores (ranging between 0-100) for global validation metrics of the entry are shown in the following graphic. The table shows the number of entries on which the scores are based.



Metric	Whole archive (#Entries)	Similar resolution (#Entries, resolution range(Å))
R_{free}	164625	7108 (1.80-1.80)
Clashscore	180529	8162 (1.80-1.80)
Ramachandran outliers	177936	8077 (1.80-1.80)
Sidechain outliers	177891	8076 (1.80-1.80)
RSRZ outliers	164620	7108 (1.80-1.80)

The table below summarises the geometric issues observed across the polymeric chains and their fit to the electron density. The red, orange, yellow and green segments of the lower bar indicate the fraction of residues that contain outliers for ≥ 3 , 2, 1 and 0 types of geometric quality criteria respectively. A grey segment represents the fraction of residues that are not modelled. The numeric value for each fraction is indicated below the corresponding segment, with a dot representing fractions $\leq 5\%$. The upper red bar (where present) indicates the fraction of residues that have poor fit to the electron density. The numeric value is given above the bar.

Mol	Chain	Length	Quality of chain
1	A	499	
2	B	6	
3	C	4	
4	D	2	

2 Entry composition [i](#)

There are 8 unique types of molecules in this entry. The entry contains 4254 atoms, of which 0 are hydrogens and 0 are deuteriums.

In the tables below, the ZeroOcc column contains the number of atoms modelled with zero occupancy, the AltConf column contains the number of residues with at least one atom in alternate conformation and the Trace column contains the number of residues modelled with at most 2 atoms.

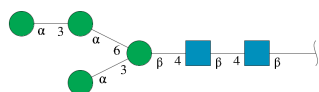
- Molecule 1 is a protein called Laccase.

Mol	Chain	Residues	Atoms					ZeroOcc	AltConf	Trace
1	A	499	Total	C	N	O	S	0	5	0
			3806	2415	653	729	9			

There is a discrepancy between the modelled and reference sequences:

Chain	Residue	Modelled	Actual	Comment	Reference
A	182	VAL	PRO	SEE REMARK 999	UNP B2L9C1

- Molecule 2 is an oligosaccharide called alpha-D-mannopyranose-(1-3)-alpha-D-mannopyranose-(1-6)-[alpha-D-mannopyranose-(1-3)]beta-D-mannopyranose-(1-4)-2-acetamido-2-deoxy-beta-D-glucopyranose-(1-4)-2-acetamido-2-deoxy-beta-D-glucopyranose.



Mol	Chain	Residues	Atoms				ZeroOcc	AltConf	Trace
2	B	6	Total	C	N	O	0	0	0
			72	40	2	30			

- Molecule 3 is an oligosaccharide called alpha-D-mannopyranose-(1-3)-beta-D-mannopyranose-(1-4)-2-acetamido-2-deoxy-beta-D-glucopyranose-(1-4)-2-acetamido-2-deoxy-beta-D-glucopyranose.



Mol	Chain	Residues	Atoms				ZeroOcc	AltConf	Trace
3	C	4	Total	C	N	O	0	0	0
			50	28	2	20			

- Molecule 4 is an oligosaccharide called 2-acetamido-2-deoxy-beta-D-glucopyranose-(1-4)-2-acetamido-2-deoxy-beta-D-glucopyranose.

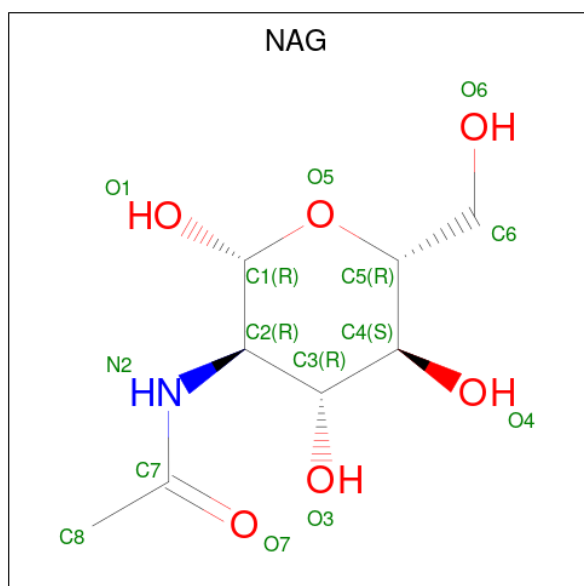


Mol	Chain	Residues	Atoms				ZeroOcc	AltConf	Trace
4	D	2	Total	C	N	O	0	0	0
			28	16	2	10			

- Molecule 5 is COPPER (II) ION (CCD ID: CU) (formula: Cu).

Mol	Chain	Residues	Atoms		ZeroOcc	AltConf
5	A	4	Total	Cu	0	0
			4	4		

- Molecule 6 is 2-acetamido-2-deoxy-beta-D-glucopyranose (CCD ID: NAG) (formula: C₈H₁₅NO₆).



Mol	Chain	Residues	Atoms				ZeroOcc	AltConf
6	A	1	Total	C	N	O	0	0
			14	8	1	5		

- Molecule 7 is PHOSPHATE ION (CCD ID: PO4) (formula: O₄P).



Mol	Chain	Residues	Atoms			ZeroOcc	AltConf
7	A	1	Total	O	P	0	0
			5	4	1		

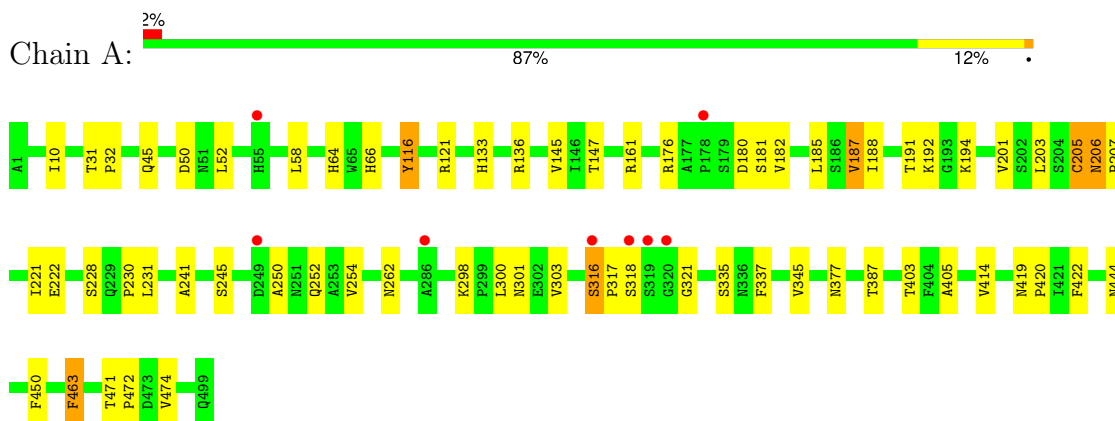
- Molecule 8 is water.

Mol	Chain	Residues	Atoms		ZeroOcc	AltConf
8	A	275	Total	O	0	0
			275	275		

3 Residue-property plots

These plots are drawn for all protein, RNA, DNA and oligosaccharide chains in the entry. The first graphic for a chain summarises the proportions of the various outlier classes displayed in the second graphic. The second graphic shows the sequence view annotated by issues in geometry and electron density. Residues are color-coded according to the number of geometric quality criteria for which they contain at least one outlier: green = 0, yellow = 1, orange = 2 and red = 3 or more. A red dot above a residue indicates a poor fit to the electron density ($RSRZ > 2$). Stretches of 2 or more consecutive residues without any outlier are shown as a green connector. Residues present in the sample, but not in the model, are shown in grey.

- Molecule 1: Laccase



- Molecule 2: alpha-D-mannopyranose-(1-3)-alpha-D-mannopyranose-(1-6)-[alpha-D-mannopyranose-(1-3)]beta-D-mannopyranose-(1-4)-2-acetamido-2-deoxy-beta-D-glucopyranose-(1-4)-2-acetamido-2-deoxy-beta-D-glucopyranose



- Molecule 3: alpha-D-mannopyranose-(1-3)-beta-D-mannopyranose-(1-4)-2-acetamido-2-deoxy-beta-D-glucopyranose-(1-4)-2-acetamido-2-deoxy-beta-D-glucopyranose



- Molecule 4: 2-acetamido-2-deoxy-beta-D-glucopyranose-(1-4)-2-acetamido-2-deoxy-beta-D-glucopyranose



4 Data and refinement statistics

Property	Value	Source
Space group	P 21 21 21	Depositor
Cell constants a, b, c, α , β , γ	52.29Å 76.34Å 129.66Å 90.00° 90.00° 90.00°	Depositor
Resolution (Å)	65.90 – 1.80 65.79 – 1.80	Depositor EDS
% Data completeness (in resolution range)	94.5 (65.90-1.80) 94.5 (65.79-1.80)	Depositor EDS
R_{merge}	0.07	Depositor
R_{sym}	(Not available)	Depositor
$\langle I/\sigma(I) \rangle$ ¹	2.44 (at 1.80Å)	Xtriage
Refinement program	REFMAC	Depositor
R, R_{free}	0.180 , 0.233 0.186 , 0.235	Depositor DCC
R_{free} test set	2330 reflections (5.05%)	wwPDB-VP
Wilson B-factor (Å ²)	26.5	Xtriage
Anisotropy	0.534	Xtriage
Bulk solvent k_{sol} (e/Å ³), B_{sol} (Å ²)	0.42 , 49.8	EDS
L-test for twinning ²	$\langle L \rangle = 0.46$, $\langle L^2 \rangle = 0.28$	Xtriage
Estimated twinning fraction	No twinning to report.	Xtriage
F_o, F_c correlation	0.96	EDS
Total number of atoms	4254	wwPDB-VP
Average B, all atoms (Å ²)	31.0	wwPDB-VP

Xtriage's analysis on translational NCS is as follows: *The largest off-origin peak in the Patterson function is 5.18% of the height of the origin peak. No significant pseudotranslation is detected.*

¹Intensities estimated from amplitudes.

²Theoretical values of $\langle |L| \rangle$, $\langle L^2 \rangle$ for acentric reflections are 0.5, 0.333 respectively for untwinned datasets, and 0.375, 0.2 for perfectly twinned datasets.

5 Model quality

5.1 Standard geometry

Bond lengths and bond angles in the following residue types are not validated in this section: CU, BMA, NAG, MAN, PO4

The Z score for a bond length (or angle) is the number of standard deviations the observed value is removed from the expected value. A bond length (or angle) with $|Z| > 5$ is considered an outlier worth inspection. RMSZ is the root-mean-square of all Z scores of the bond lengths (or angles).

Mol	Chain	Bond lengths		Bond angles	
		RMSZ	$\# Z > 5$	RMSZ	$\# Z > 5$
1	A	1.18	5/3950 (0.1%)	1.07	5/5424 (0.1%)

Chiral center outliers are detected by calculating the chiral volume of a chiral center and verifying if the center is modelled as a planar moiety or with the opposite hand. A planarity outlier is detected by checking planarity of atoms in a peptide group, atoms in a mainchain group or atoms of a sidechain that are expected to be planar.

Mol	Chain	#Chirality outliers	#Planarity outliers
1	A	0	1

All (5) bond length outliers are listed below:

Mol	Chain	Res	Type	Atoms	Z	Observed(Å)	Ideal(Å)
1	A	345	VAL	CA-CB	6.21	1.59	1.54
1	A	187	VAL	CA-CB	5.75	1.61	1.54
1	A	241	ALA	CA-CB	5.55	1.61	1.54
1	A	45	GLN	CA-C	-5.51	1.46	1.53
1	A	145	VAL	CA-CB	5.15	1.60	1.54

All (5) bond angle outliers are listed below:

Mol	Chain	Res	Type	Atoms	Z	Observed(°)	Ideal(°)
1	A	316	SER	CA-C-N	8.19	130.07	119.84
1	A	316	SER	C-N-CA	8.19	130.07	119.84
1	A	298	LYS	CB-CA-C	-5.81	103.59	111.21
1	A	262	ASN	CA-C-N	-5.67	114.76	120.31
1	A	262	ASN	C-N-CA	-5.67	114.76	120.31

There are no chirality outliers.

All (1) planarity outliers are listed below:

Mol	Chain	Res	Type	Group
1	A	228	SER	Peptide

5.2 Too-close contacts

In the following table, the Non-H and H(model) columns list the number of non-hydrogen atoms and hydrogen atoms in the chain respectively. The H(added) column lists the number of hydrogen atoms added and optimized by MolProbity. The Clashes column lists the number of clashes within the asymmetric unit, whereas Symm-Clashes lists symmetry-related clashes.

Mol	Chain	Non-H	H(model)	H(added)	Clashes	Symm-Clashes
1	A	3806	0	3593	40	0
2	B	72	0	61	0	0
3	C	50	0	43	0	0
4	D	28	0	25	1	0
5	A	4	0	0	0	0
6	A	14	0	13	0	0
7	A	5	0	0	0	0
8	A	275	0	0	1	0
All	All	4254	0	3735	41	0

The all-atom clashscore is defined as the number of clashes found per 1000 atoms (including hydrogen atoms). The all-atom clashscore for this structure is 5.

All (41) close contacts within the same asymmetric unit are listed below, sorted by their clash magnitude.

Atom-1	Atom-2	Interatomic distance (Å)	Clash overlap (Å)
1:A:180:ASP:OD1	1:A:182:VAL:HG22	1.75	0.87
1:A:192:LYS:CD	1:A:254:VAL:HG23	2.13	0.78
1:A:192:LYS:HD2	1:A:254:VAL:HG23	1.73	0.71
1:A:192:LYS:HD3	1:A:254:VAL:HG23	1.78	0.65
1:A:176:ARG:HD3	1:A:181:SER:HA	1.80	0.64
1:A:176:ARG:HG3	1:A:185:LEU:HD21	1.81	0.61
1:A:31:THR:HA	1:A:32:PRO:C	2.25	0.61
1:A:191:THR:HB	1:A:194:LYS:HD2	1.87	0.55
1:A:377:ASN:HD22	1:A:444:ASN:HD21	1.55	0.53
1:A:161:ARG:NH1	1:A:335:SER:O	2.42	0.53
1:A:116:TYR:CE1	1:A:205[A]:CYS:SG	3.02	0.53
1:A:10:ILE:HG22	1:A:52:LEU:HD21	1.92	0.52
1:A:188:ILE:HD12	1:A:188:ILE:N	2.25	0.52
1:A:64:HIS:CD2	8:A:1001:HOH:O	2.64	0.51
1:A:121:ARG:HD2	1:A:203:LEU:HB3	1.93	0.51

Continued on next page...

Continued from previous page...

Atom-1	Atom-2	Interatomic distance (Å)	Clash overlap (Å)
1:A:377:ASN:HA	1:A:444:ASN:HD21	1.76	0.50
1:A:147:THR:HG22	1:A:201[A]:VAL:CG1	2.41	0.50
1:A:405:ALA:HB2	1:A:422:PHE:CZ	2.48	0.49
1:A:66:HIS:CD2	1:A:66:HIS:C	2.90	0.49
1:A:301:ASN:OD1	1:A:303:VAL:HG22	2.13	0.49
1:A:192:LYS:HA	1:A:250:ALA:O	2.13	0.48
1:A:301:ASN:CG	1:A:303:VAL:HG22	2.39	0.48
1:A:471:THR:N	1:A:472:PRO:CD	2.78	0.47
1:A:206:ASN:HB3	1:A:207:PRO:CD	2.45	0.47
1:A:419:ASN:N	1:A:420:PRO:CD	2.79	0.45
1:A:222:GLU:HB3	1:A:245:SER:HB2	2.00	0.44
1:A:316:SER:N	1:A:321:GLY:O	2.51	0.43
1:A:133:HIS:ND1	1:A:136[B]:ARG:NH1	2.67	0.42
1:A:231:LEU:HD23	1:A:300:LEU:HD13	2.02	0.42
1:A:192:LYS:HE3	1:A:252:GLN:O	2.20	0.42
1:A:133:HIS:CD2	1:A:221:ILE:HB	2.55	0.42
1:A:136[B]:ARG:NH2	1:A:230:PRO:HG3	2.35	0.41
1:A:471:THR:HA	1:A:474:VAL:HG23	2.02	0.41
4:D:2:NAG:H82	4:D:2:NAG:H2	1.79	0.41
1:A:337:PHE:HB3	1:A:463:PHE:CD1	2.56	0.41
1:A:136[B]:ARG:HH21	1:A:230:PRO:HG3	1.86	0.40
1:A:180:ASP:OD1	1:A:180:ASP:C	2.63	0.40
1:A:187:VAL:C	1:A:188:ILE:HD12	2.46	0.40
1:A:50:ASP:OD1	1:A:50:ASP:C	2.65	0.40
1:A:403:THR:HG22	1:A:422:PHE:HB3	2.04	0.40
1:A:463:PHE:HD1	1:A:463:PHE:HA	1.82	0.40

There are no symmetry-related clashes.

5.3 Torsion angles

5.3.1 Protein backbone

In the following table, the Percentiles column shows the percent Ramachandran outliers of the chain as a percentile score with respect to all X-ray entries followed by that with respect to entries of similar resolution.

The Analysed column shows the number of residues for which the backbone conformation was analysed, and the total number of residues.

Mol	Chain	Analysed	Favoured	Allowed	Outliers	Percentiles
1	A	502/499 (101%)	484 (96%)	15 (3%)	3 (1%)	22 11

All (3) Ramachandran outliers are listed below:

Mol	Chain	Res	Type
1	A	317	PRO
1	A	206	ASN
1	A	58	LEU

5.3.2 Protein sidechains [i](#)

In the following table, the Percentiles column shows the percent sidechain outliers of the chain as a percentile score with respect to all X-ray entries followed by that with respect to entries of similar resolution.

The Analysed column shows the number of residues for which the sidechain conformation was analysed, and the total number of residues.

Mol	Chain	Analysed	Rotameric	Outliers	Percentiles
1	A	418/414 (101%)	410 (98%)	8 (2%)	52 43

All (8) residues with a non-rotameric sidechain are listed below:

Mol	Chain	Res	Type
1	A	116	TYR
1	A	205[A]	CYS
1	A	205[B]	CYS
1	A	318	SER
1	A	387	THR
1	A	414	VAL
1	A	450	PHE
1	A	463	PHE

Sometimes sidechains can be flipped to improve hydrogen bonding and reduce clashes. All (6) such sidechains are listed below:

Mol	Chain	Res	Type
1	A	71	HIS
1	A	229	GLN
1	A	267	ASN
1	A	360	GLN
1	A	444	ASN

Continued on next page...

Continued from previous page...

Mol	Chain	Res	Type
1	A	499	GLN

5.3.3 RNA ⓘ

There are no RNA molecules in this entry.

5.4 Non-standard residues in protein, DNA, RNA chains ⓘ

There are no non-standard protein/DNA/RNA residues in this entry.

5.5 Carbohydrates ⓘ

12 monosaccharides are modelled in this entry.

In the following table, the Counts columns list the number of bonds (or angles) for which Mogul statistics could be retrieved, the number of bonds (or angles) that are observed in the model and the number of bonds (or angles) that are defined in the Chemical Component Dictionary. The Link column lists molecule types, if any, to which the group is linked. The Z score for a bond length (or angle) is the number of standard deviations the observed value is removed from the expected value. A bond length (or angle) with $|Z| > 2$ is considered an outlier worth inspection. RMSZ is the root-mean-square of all Z scores of the bond lengths (or angles).

Mol	Type	Chain	Res	Link	Bond lengths			Bond angles		
					Counts	RMSZ	# Z > 2	Counts	RMSZ	# Z > 2
2	NAG	B	1	1,2	14,14,15	0.91	1 (7%)	17,19,21	1.46	2 (11%)
2	NAG	B	2	2	14,14,15	0.62	0	17,19,21	2.16	5 (29%)
2	BMA	B	3	2	11,11,12	0.73	0	15,15,17	1.72	3 (20%)
2	MAN	B	4	2	11,11,12	0.61	0	15,15,17	1.59	4 (26%)
2	MAN	B	5	2	11,11,12	0.70	0	15,15,17	1.24	0
2	MAN	B	6	2	11,11,12	0.82	0	15,15,17	2.84	6 (40%)
3	NAG	C	1	1,3	14,14,15	0.81	0	17,19,21	1.51	2 (11%)
3	NAG	C	2	3	14,14,15	0.79	1 (7%)	17,19,21	2.07	7 (41%)
3	BMA	C	3	3	11,11,12	0.46	0	15,15,17	0.82	0
3	MAN	C	4	3	11,11,12	0.61	0	15,15,17	1.23	2 (13%)
4	NAG	D	1	4,1	14,14,15	0.69	0	17,19,21	1.29	3 (17%)
4	NAG	D	2	4	14,14,15	0.54	0	17,19,21	2.39	6 (35%)

In the following table, the Chirals column lists the number of chiral outliers, the number of chiral centers analysed, the number of these observed in the model and the number defined in the

Chemical Component Dictionary. Similar counts are reported in the Torsion and Rings columns.
'-' means no outliers of that kind were identified.

Mol	Type	Chain	Res	Link	Chirals	Torsions	Rings
2	NAG	B	1	1,2	-	0/6/23/26	0/1/1/1
2	NAG	B	2	2	-	2/6/23/26	0/1/1/1
2	BMA	B	3	2	-	0/2/19/22	0/1/1/1
2	MAN	B	4	2	-	2/2/19/22	0/1/1/1
2	MAN	B	5	2	-	0/2/19/22	0/1/1/1
2	MAN	B	6	2	-	1/2/19/22	0/1/1/1
3	NAG	C	1	1,3	-	0/6/23/26	0/1/1/1
3	NAG	C	2	3	-	4/6/23/26	0/1/1/1
3	BMA	C	3	3	-	0/2/19/22	0/1/1/1
3	MAN	C	4	3	-	2/2/19/22	0/1/1/1
4	NAG	D	1	4,1	-	0/6/23/26	0/1/1/1
4	NAG	D	2	4	-	4/6/23/26	0/1/1/1

All (2) bond length outliers are listed below:

Mol	Chain	Res	Type	Atoms	Z	Observed(Å)	Ideal(Å)
2	B	1	NAG	C1-C2	2.49	1.55	1.52
3	C	2	NAG	O5-C1	-2.26	1.39	1.43

All (40) bond angle outliers are listed below:

Mol	Chain	Res	Type	Atoms	Z	Observed(°)	Ideal(°)
2	B	6	MAN	C1-O5-C5	6.92	121.47	112.19
4	D	2	NAG	C1-O5-C5	6.21	120.51	112.19
2	B	2	NAG	C1-O5-C5	-5.36	105.00	112.19
2	B	6	MAN	C1-C2-C3	5.35	117.43	109.64
3	C	1	NAG	C1-O5-C5	4.69	118.47	112.19
2	B	1	NAG	O5-C1-C2	-4.23	104.75	111.29
2	B	4	MAN	C1-O5-C5	4.06	117.62	112.19
3	C	2	NAG	C8-C7-N2	3.89	122.57	116.12
4	D	2	NAG	C2-N2-C7	-3.79	117.82	122.90
4	D	2	NAG	C4-C3-C2	-3.52	105.86	111.02
2	B	3	BMA	C1-C2-C3	-3.45	104.63	109.64
3	C	2	NAG	O6-C6-C5	-3.44	99.64	111.33
3	C	2	NAG	O7-C7-C8	-3.39	116.02	122.05
2	B	2	NAG	O7-C7-C8	-3.35	116.09	122.05
2	B	6	MAN	C3-C4-C5	3.33	116.28	110.23
4	D	1	NAG	O5-C1-C2	-3.28	106.22	111.29
2	B	2	NAG	O5-C5-C6	3.27	114.02	107.66

Continued on next page...

Continued from previous page...

Mol	Chain	Res	Type	Atoms	Z	Observed(°)	Ideal(°)
2	B	2	NAG	C4-C3-C2	3.17	115.66	111.02
3	C	2	NAG	C1-O5-C5	-3.11	108.02	112.19
2	B	6	MAN	O5-C5-C4	3.11	118.38	110.83
2	B	6	MAN	C2-C3-C4	2.83	115.85	110.86
2	B	3	BMA	O4-C4-C3	-2.81	103.75	110.38
2	B	6	MAN	O5-C1-C2	2.80	117.46	110.79
3	C	4	MAN	O5-C5-C6	2.76	113.04	107.66
2	B	4	MAN	O4-C4-C3	-2.65	104.12	110.38
3	C	4	MAN	C1-O5-C5	2.52	115.56	112.19
3	C	2	NAG	C4-C3-C2	-2.52	107.33	111.02
4	D	2	NAG	C1-C2-N2	2.51	114.38	110.43
4	D	2	NAG	O5-C5-C4	2.50	116.91	110.83
4	D	1	NAG	O4-C4-C5	2.37	115.15	109.32
2	B	3	BMA	O5-C5-C6	2.31	112.15	107.66
4	D	1	NAG	C1-O5-C5	2.29	115.25	112.19
3	C	2	NAG	O4-C4-C5	2.26	114.88	109.32
3	C	2	NAG	O4-C4-C3	-2.24	105.09	110.38
3	C	1	NAG	O5-C1-C2	-2.21	107.87	111.29
2	B	4	MAN	C6-C5-C4	2.20	118.41	113.02
2	B	1	NAG	O5-C5-C4	-2.14	105.63	110.83
4	D	2	NAG	C6-C5-C4	-2.10	107.87	113.02
2	B	4	MAN	O2-C2-C1	2.08	113.99	109.22
2	B	2	NAG	O5-C1-C2	-2.02	108.16	111.29

There are no chirality outliers.

All (15) torsion outliers are listed below:

Mol	Chain	Res	Type	Atoms
4	D	2	NAG	C8-C7-N2-C2
4	D	2	NAG	O7-C7-N2-C2
4	D	2	NAG	C4-C5-C6-O6
3	C	4	MAN	C4-C5-C6-O6
3	C	2	NAG	O5-C5-C6-O6
4	D	2	NAG	O5-C5-C6-O6
3	C	2	NAG	C4-C5-C6-O6
3	C	2	NAG	C8-C7-N2-C2
3	C	2	NAG	O7-C7-N2-C2
3	C	4	MAN	O5-C5-C6-O6
2	B	6	MAN	C4-C5-C6-O6
2	B	2	NAG	C4-C5-C6-O6
2	B	4	MAN	O5-C5-C6-O6
2	B	4	MAN	C4-C5-C6-O6

Continued on next page...

Continued from previous page...

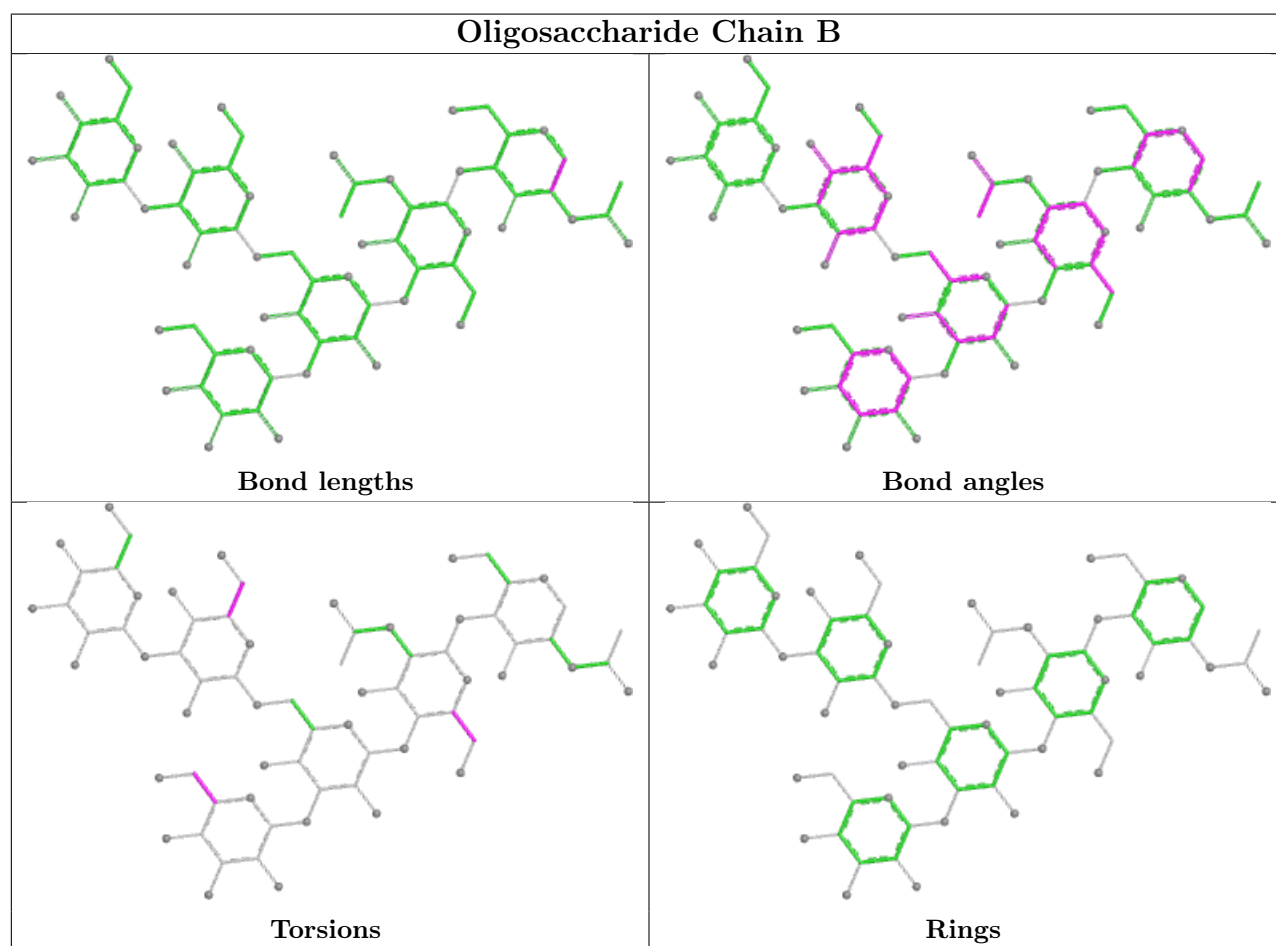
Mol	Chain	Res	Type	Atoms
2	B	2	NAG	O5-C5-C6-O6

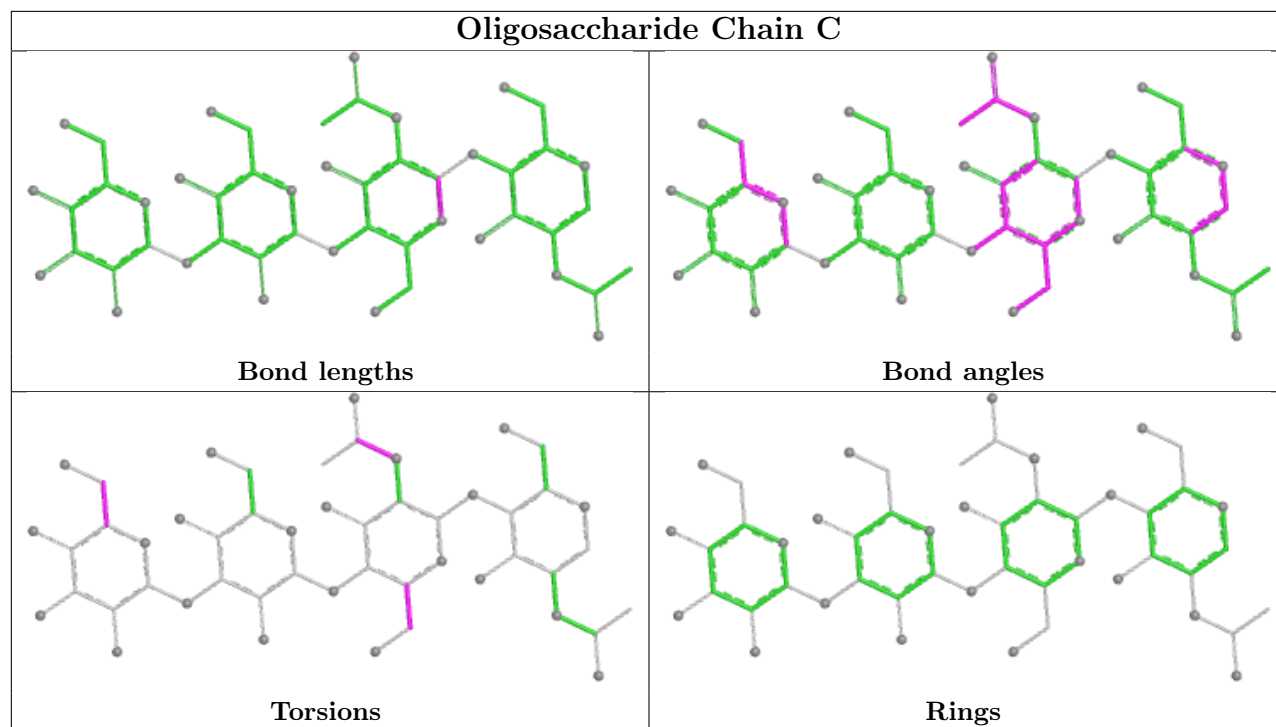
There are no ring outliers.

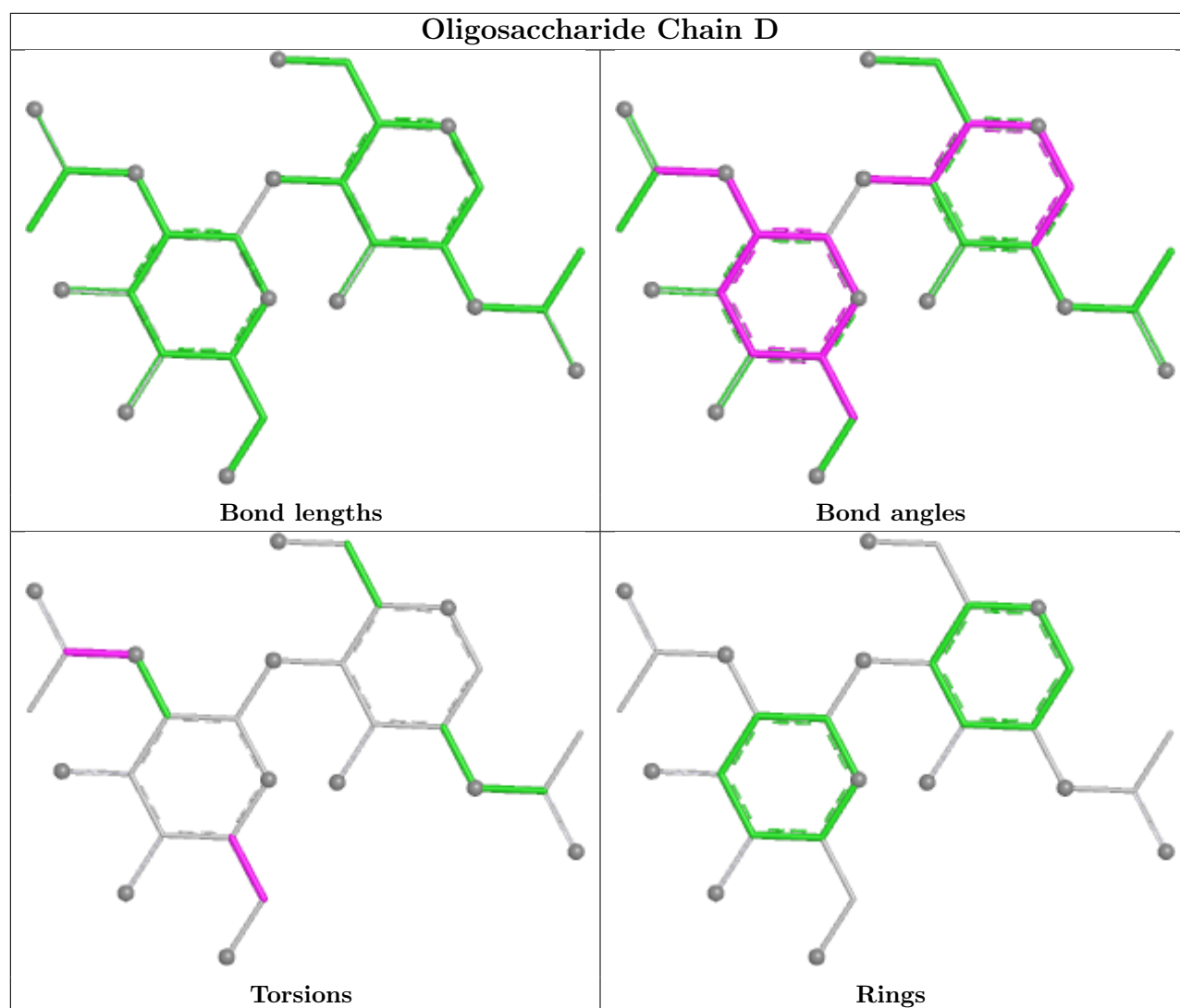
1 monomer is involved in 1 short contact:

Mol	Chain	Res	Type	Clashes	Symm-Clashes
4	D	2	NAG	1	0

The following is a two-dimensional graphical depiction of Mogul quality analysis of bond lengths, bond angles, torsion angles, and ring geometry for oligosaccharide.







5.6 Ligand geometry [i](#)

Of 6 ligands modelled in this entry, 4 are monoatomic - leaving 2 for Mogul analysis.

In the following table, the Counts columns list the number of bonds (or angles) for which Mogul statistics could be retrieved, the number of bonds (or angles) that are observed in the model and the number of bonds (or angles) that are defined in the Chemical Component Dictionary. The Link column lists molecule types, if any, to which the group is linked. The Z score for a bond length (or angle) is the number of standard deviations the observed value is removed from the expected value. A bond length (or angle) with $|Z| > 2$ is considered an outlier worth inspection. RMSZ is the root-mean-square of all Z scores of the bond lengths (or angles).

Mol	Type	Chain	Res	Link	Bond lengths			Bond angles		
					Counts	RMSZ	$\# Z > 2$	Counts	RMSZ	$\# Z > 2$
6	NAG	A	1509	1	14,14,15	0.77	1 (7%)	17,19,21	1.69	3 (17%)
7	PO4	A	500	-	4,4,4	1.28	0	6,6,6	0.91	0

In the following table, the Chirals column lists the number of chiral outliers, the number of chiral centers analysed, the number of these observed in the model and the number defined in the Chemical Component Dictionary. Similar counts are reported in the Torsion and Rings columns. '-' means no outliers of that kind were identified.

Mol	Type	Chain	Res	Link	Chirals	Torsions	Rings
6	NAG	A	1509	1	-	1/6/23/26	0/1/1/1

All (1) bond length outliers are listed below:

Mol	Chain	Res	Type	Atoms	Z	Observed(Å)	Ideal(Å)
6	A	1509	NAG	C1-C2	2.25	1.55	1.52

All (3) bond angle outliers are listed below:

Mol	Chain	Res	Type	Atoms	Z	Observed(°)	Ideal(°)
6	A	1509	NAG	C3-C4-C5	-4.17	102.67	110.23
6	A	1509	NAG	O5-C5-C6	3.48	114.43	107.66
6	A	1509	NAG	O5-C1-C2	-2.49	107.44	111.29

There are no chirality outliers.

All (1) torsion outliers are listed below:

Mol	Chain	Res	Type	Atoms
6	A	1509	NAG	C4-C5-C6-O6

There are no ring outliers.

No monomer is involved in short contacts.

5.7 Other polymers [i](#)

There are no such residues in this entry.

5.8 Polymer linkage issues [i](#)

There are no chain breaks in this entry.

6 Fit of model and data [i](#)

6.1 Protein, DNA and RNA chains [i](#)

In the following table, the column labelled ‘#RSRZ> 2’ contains the number (and percentage) of RSRZ outliers, followed by percent RSRZ outliers for the chain as percentile scores relative to all X-ray entries and entries of similar resolution. The OWAB column contains the minimum, median, 95th percentile and maximum values of the occupancy-weighted average B-factor per residue. The column labelled ‘Q< 0.9’ lists the number of (and percentage) of residues with an average occupancy less than 0.9.

Mol	Chain	Analysed	<RSRZ>	#RSRZ>2	OWAB(Å ²)	Q<0.9
1	A	499/499 (100%)	-0.19	8 (1%) 70 69	17, 28, 48, 62	5 (1%)

All (8) RSRZ outliers are listed below:

Mol	Chain	Res	Type	RSRZ
1	A	318	SER	4.2
1	A	320	GLY	3.8
1	A	286	ALA	3.4
1	A	319	SER	2.8
1	A	316	SER	2.6
1	A	55	HIS	2.3
1	A	249	ASP	2.3
1	A	178	PRO	2.1

6.2 Non-standard residues in protein, DNA, RNA chains [i](#)

There are no non-standard protein/DNA/RNA residues in this entry.

6.3 Carbohydrates [i](#)

In the following table, the Atoms column lists the number of modelled atoms in the group and the number defined in the chemical component dictionary. The B-factors column lists the minimum, median, 95th percentile and maximum values of B factors of atoms in the group. The column labelled ‘Q< 0.9’ lists the number of atoms with occupancy less than 0.9.

Mol	Type	Chain	Res	Atoms	RSCC	RSR	B-factors(Å ²)	Q<0.9
4	NAG	D	2	14/15	0.53	0.15	59,63,65,65	0
2	MAN	B	6	11/12	0.78	0.12	45,53,59,63	0
4	NAG	D	1	14/15	0.81	0.12	49,54,56,57	0
3	MAN	C	4	11/12	0.82	0.10	54,56,58,59	0

Continued on next page...

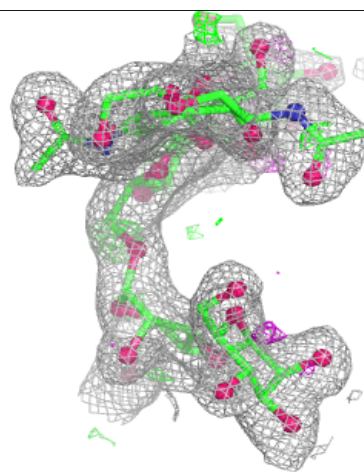
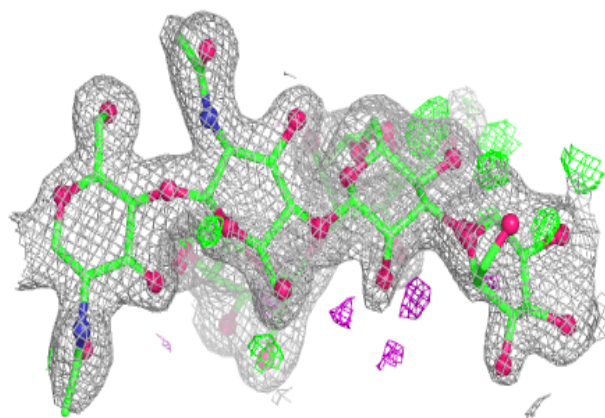
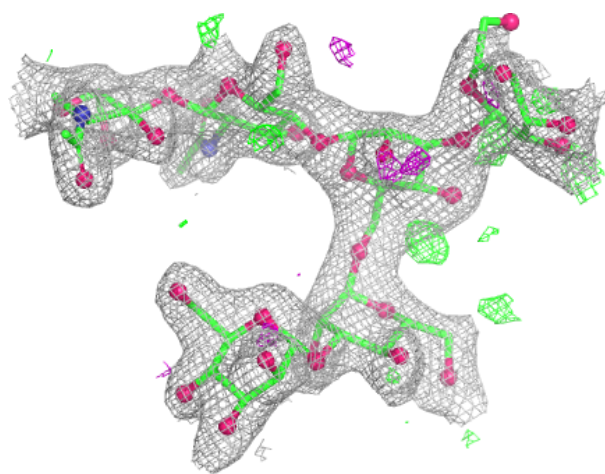
Continued from previous page...

Mol	Type	Chain	Res	Atoms	RSCC	RSR	B-factors(\AA^2)	Q<0.9
2	BMA	B	3	11/12	0.85	0.10	37,42,47,50	0
3	BMA	C	3	11/12	0.86	0.09	41,48,50,52	0
3	NAG	C	2	14/15	0.87	0.10	36,41,48,52	0
2	MAN	B	4	11/12	0.88	0.08	32,38,45,48	0
3	NAG	C	1	14/15	0.89	0.10	38,40,45,51	0
2	MAN	B	5	11/12	0.92	0.08	33,40,44,45	0
2	NAG	B	2	14/15	0.93	0.07	28,35,42,45	0
2	NAG	B	1	14/15	0.94	0.08	26,35,38,41	0

The following is a graphical depiction of the model fit to experimental electron density for oligosaccharide. Each fit is shown from different orientation to approximate a three-dimensional view.

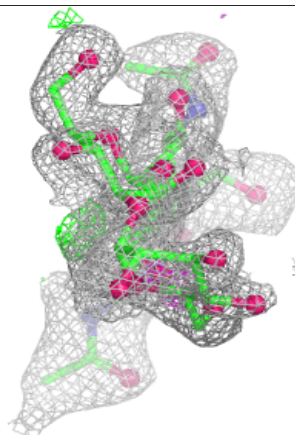
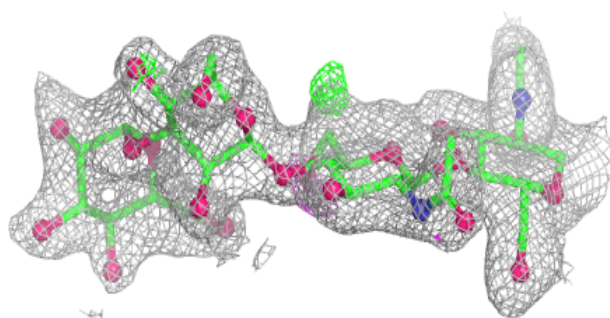
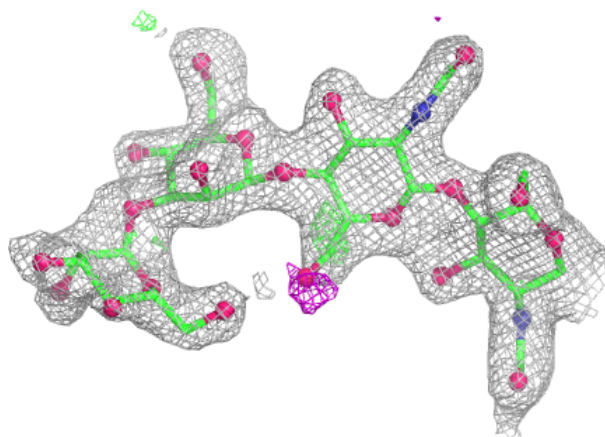
Electron density around Chain B:

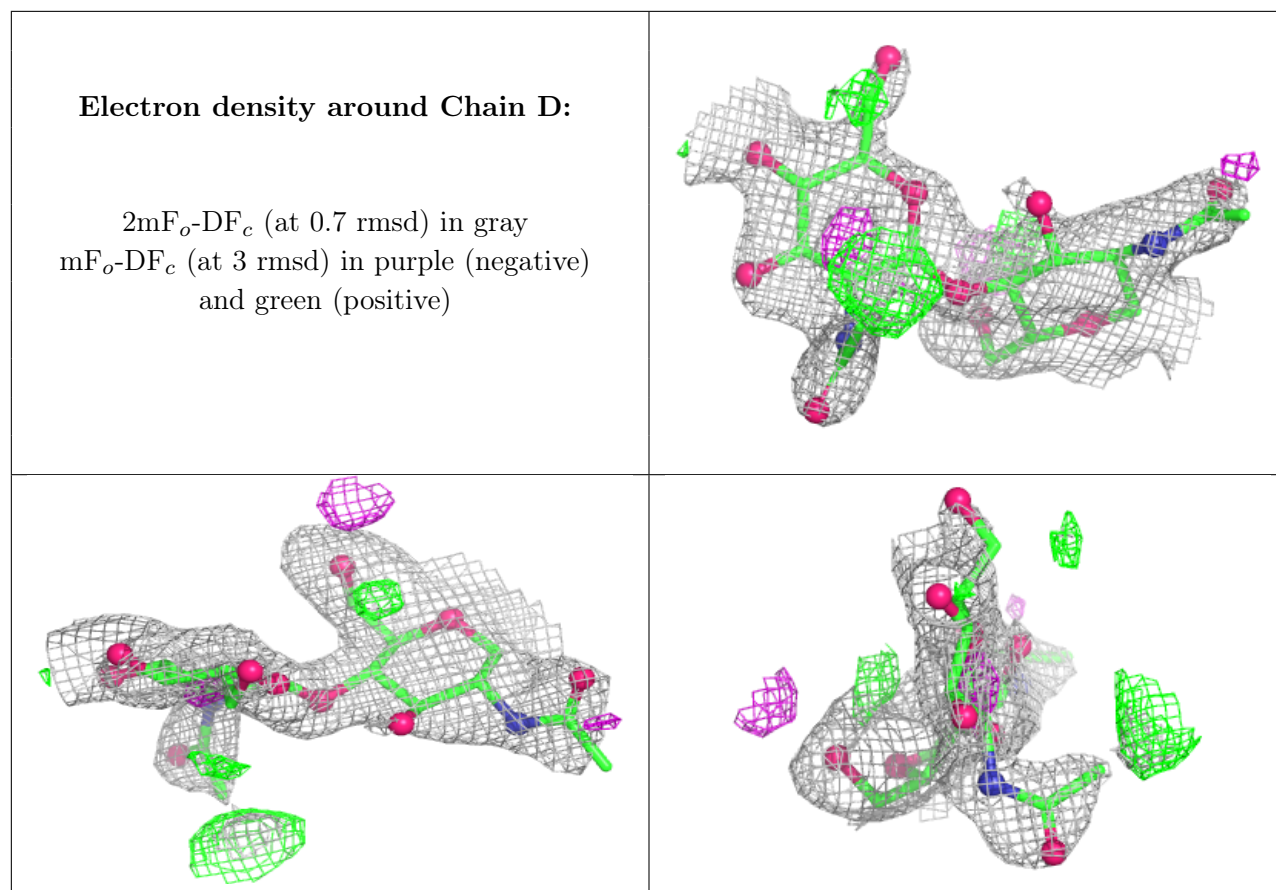
2mF_o-DF_c (at 0.7 rmsd) in gray
mF_o-DF_c (at 3 rmsd) in purple (negative)
and green (positive)



Electron density around Chain C:

$2mF_o - DF_c$ (at 0.7 rmsd) in gray
 $mF_o - DF_c$ (at 3 rmsd) in purple (negative)
and green (positive)





6.4 Ligands ⓘ

In the following table, the Atoms column lists the number of modelled atoms in the group and the number defined in the chemical component dictionary. The B-factors column lists the minimum, median, 95th percentile and maximum values of B factors of atoms in the group. The column labelled 'Q<0.9' lists the number of atoms with occupancy less than 0.9.

Mol	Type	Chain	Res	Atoms	RSCC	RSR	B-factors(\AA^2)	Q<0.9
7	PO4	A	500	5/5	0.89	0.19	32,34,35,35	5
6	NAG	A	1509	14/15	0.90	0.08	35,40,42,42	0
5	CU	A	1500	1/1	0.97	0.17	24,24,24,24	1
5	CU	A	1501	1/1	0.98	0.20	31,31,31,31	1
5	CU	A	1502	1/1	0.99	0.13	26,26,26,26	1
5	CU	A	1503	1/1	0.99	0.14	27,27,27,27	1

6.5 Other polymers ⓘ

There are no such residues in this entry.