



Full wwPDB EM Validation Report ⓘ

May 6, 2025 – 05:45 AM EDT

PDB ID : 8G5H / pdb_00008g5h
EMDB ID : EMD-29743
Title : Native GABA-A receptor from the mouse brain, ortho-alpha1-alpha3-beta2-gamma2 subtype, in complex with GABA, Zolpidem, and endogenous neurosteroid
Authors : Sun, C.; Gouaux, E.
Deposited on : 2023-02-13
Resolution : 2.89 Å(reported)

This is a Full wwPDB EM Validation Report for a publicly released PDB entry.

We welcome your comments at validation@mail.wwpdb.org

A user guide is available at

<https://www.wwpdb.org/validation/2017/EMValidationReportHelp>
with specific help available everywhere you see the ⓘ symbol.

The types of validation reports are described at

<http://www.wwpdb.org/validation/2017/FAQs#types>.

The following versions of software and data (see [references ⓘ](#)) were used in the production of this report:

EMDB validation analysis : 0.0.1.dev118
Mogul : 2022.3.0, CSD as543be (2022)
MolProbity : 4-5-2 with Phenix2.0rc1
buster-report : 1.1.7 (2018)
Percentile statistics : 20231227.v01 (using entries in the PDB archive December 27th 2023)
MapQ : 1.9.13
Ideal geometry (proteins) : Engh & Huber (2001)
Ideal geometry (DNA, RNA) : Parkinson et al. (1996)
Validation Pipeline (wwPDB-VP) : 2.43.1

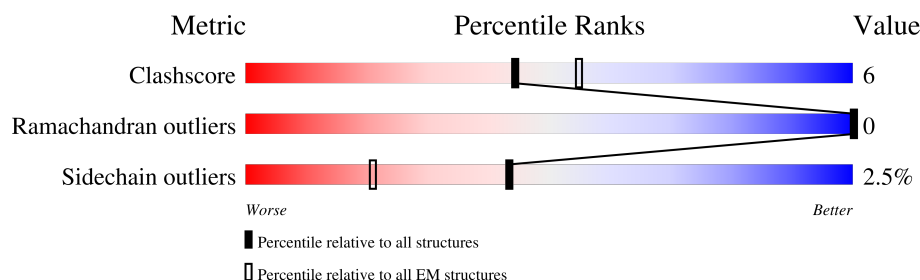
1 Overall quality at a glance

The following experimental techniques were used to determine the structure:

ELECTRON MICROSCOPY

The reported resolution of this entry is 2.89 Å.

Percentile scores (ranging between 0-100) for global validation metrics of the entry are shown in the following graphic. The table shows the number of entries on which the scores are based.



Metric	Whole archive (#Entries)	EM structures (#Entries)
Clashscore	210492	15764
Ramachandran outliers	207382	16835
Sidechain outliers	206894	16415

The table below summarises the geometric issues observed across the polymeric chains and their fit to the map. The red, orange, yellow and green segments of the bar indicate the fraction of residues that contain outliers for ≥ 3 , 2, 1 and 0 types of geometric quality criteria respectively. A grey segment represents the fraction of residues that are not modelled. The numeric value for each fraction is indicated below the corresponding segment, with a dot representing fractions $\leq 5\%$. The upper red bar (where present) indicates the fraction of residues that have poor fit to the EM map (all-atom inclusion $< 40\%$). The numeric value is given above the bar.

Mol	Chain	Length	Quality of chain
1	B	512	
1	E	512	
2	C	455	
3	D	474	
4	J	223	
5	K	213	
6	A	492	
7	F	5	

Continued on next page...

Continued from previous page...

Mol	Chain	Length	Quality of chain
7	G	5	<div><div></div><div>40%</div><div>100%</div></div>
7	H	5	<div><div></div><div>80%</div><div>20%</div></div>
7	L	5	<div><div></div><div>20%</div><div>40%</div><div>40%</div><div>20%</div></div>
7	M	5	<div><div></div><div>80%</div><div>20%</div></div>
8	I	7	<div><div></div><div>43%</div><div>57%</div></div>
9	N	3	<div><div></div><div>33%</div><div>67%</div><div>33%</div></div>

2 Entry composition [i](#)

There are 14 unique types of molecules in this entry. The entry contains 15875 atoms, of which 0 are hydrogens and 0 are deuteriums.

In the tables below, the AltConf column contains the number of residues with at least one atom in alternate conformation and the Trace column contains the number of residues modelled with at most 2 atoms.

- Molecule 1 is a protein called Gamma-aminobutyric acid receptor subunit beta-2.

Mol	Chain	Residues	Atoms					AltConf	Trace
1	B	332	Total	C	N	O	S	0	0
			2718	1782	435	485	16		
1	E	331	Total	C	N	O	S	0	0
			2711	1778	434	483	16		

- Molecule 2 is a protein called Gamma-aminobutyric acid receptor subunit alpha-1.

Mol	Chain	Residues	Atoms					AltConf	Trace
2	C	344	Total	C	N	O	S	0	0
			2783	1800	466	501	16		

- Molecule 3 is a protein called Gamma-aminobutyric acid receptor subunit gamma-2.

Mol	Chain	Residues	Atoms					AltConf	Trace
3	D	318	Total	C	N	O	S	0	0
			2605	1698	428	465	14		

- Molecule 4 is a protein called Heavy Chain of 8E3 Fab.

Mol	Chain	Residues	Atoms					AltConf	Trace
4	J	117	Total	C	N	O	S	0	0
			920	587	152	177	4		

- Molecule 5 is a protein called Light Chain of 8E3 Fab.

Mol	Chain	Residues	Atoms					AltConf	Trace
5	K	105	Total	C	N	O	S	0	0
			796	505	132	155	4		

- Molecule 6 is a protein called Gamma-aminobutyric acid receptor subunit alpha-3.

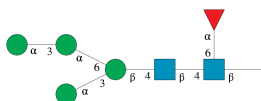
Mol	Chain	Residues	Atoms					AltConf	Trace
6	A	340	Total	C	N	O	S	0	0
			2748	1792	451	491	14		

- Molecule 7 is an oligosaccharide called alpha-D-mannopyranose-(1-3)-[alpha-D-mannopyranose-(1-6)]beta-D-mannopyranose-(1-4)-2-acetamido-2-deoxy-beta-D-glucopyranose-(1-4)-2-acetamido-2-deoxy-beta-D-glucopyranose.



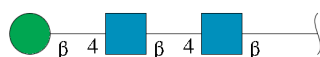
Mol	Chain	Residues	Atoms				AltConf	Trace
7	F	5	Total	C	N	O	0	0
			61	34	2	25		
7	G	5	Total	C	N	O	0	0
			61	34	2	25		
7	H	5	Total	C	N	O	0	0
			61	34	2	25		
7	L	5	Total	C	N	O	0	0
			61	34	2	25		
7	M	5	Total	C	N	O	0	0
			61	34	2	25		

- Molecule 8 is an oligosaccharide called alpha-D-mannopyranose-(1-3)-alpha-D-mannopyranose-(1-6)-[alpha-D-mannopyranose-(1-3)]beta-D-mannopyranose-(1-4)-2-acetamido-2-deoxy-beta-D-glucopyranose-(1-4)-[alpha-L-fucopyranose-(1-6)]2-acetamido-2-deoxy-beta-D-glucopyranose.



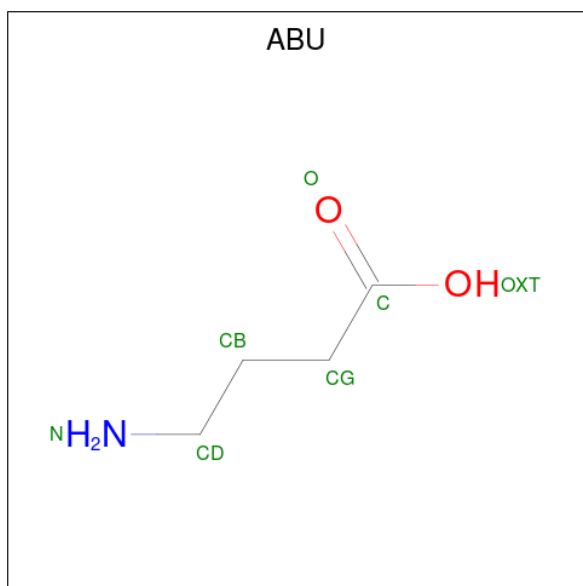
Mol	Chain	Residues	Atoms				AltConf	Trace
8	I	7	Total	C	N	O	0	0
			82	46	2	34		

- Molecule 9 is an oligosaccharide called beta-D-mannopyranose-(1-4)-2-acetamido-2-deoxy-beta-D-glucopyranose-(1-4)-2-acetamido-2-deoxy-beta-D-glucopyranose.



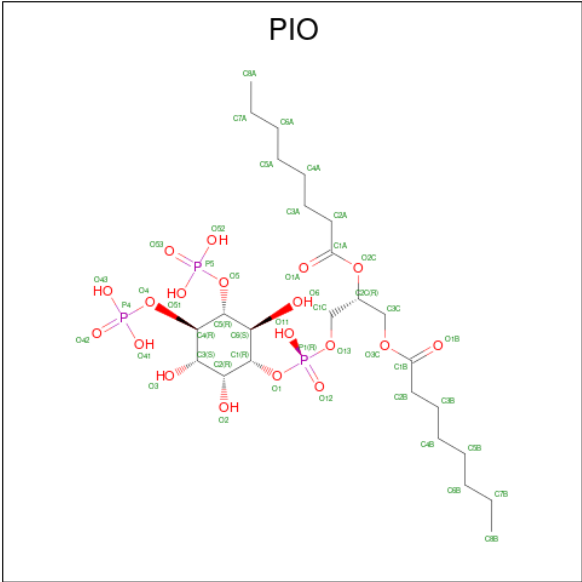
Mol	Chain	Residues	Atoms				AltConf	Trace
9	N	3	Total	C	N	O	0	0
			39	22	2	15		

- Molecule 10 is GAMMA-AMINO-BUTANOIC ACID (CCD ID: ABU) (formula: $C_4H_9NO_2$).



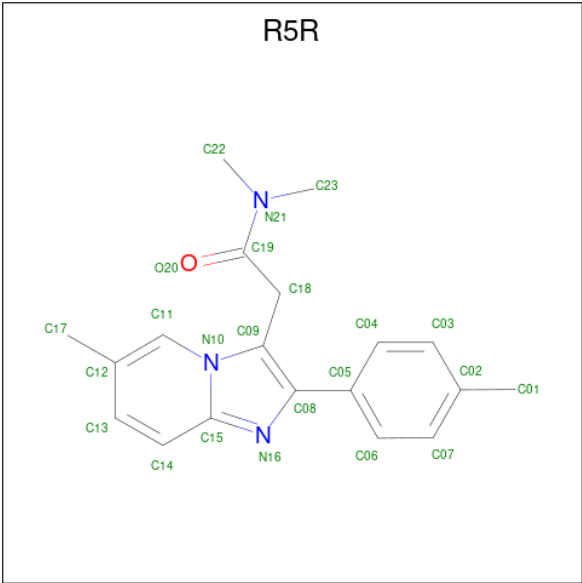
Mol	Chain	Residues	Atoms				AltConf
10	B	1	Total	C	N	O	0
			7	4	1	2	
10	E	1	Total	C	N	O	0
			7	4	1	2	

- Molecule 11 is [(2R)-2-octanoyloxy-3-[oxidanyl-[(1R,2R,3S,4R,5R,6S)-2,3,6-tris(oxidanyl)-4,5-diphosphonoxy-cyclohexyl]oxy-phosphoryl]oxy-propyl] octanoate (CCD ID: PIO) (formula: $C_{25}H_{49}O_{19}P_3$).



Mol	Chain	Residues	Atoms				AltConf
11	C	1	Total	C	O	P	0
			47	25	19	3	
11	A	1	Total	C	O	P	0
			47	25	19	3	

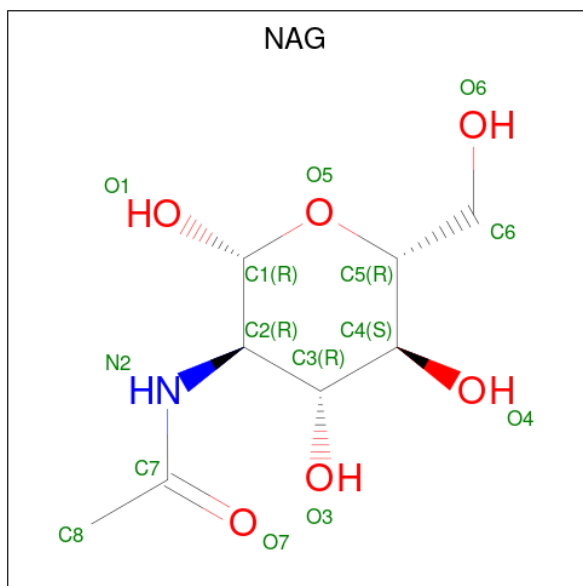
- Molecule 12 is Zolpidem (CCD ID: R5R) (formula: C₁₉H₂₁N₃O).



Mol	Chain	Residues	Atoms				AltConf
12	C	1	Total	C	N	O	0
			23	19	3	1	

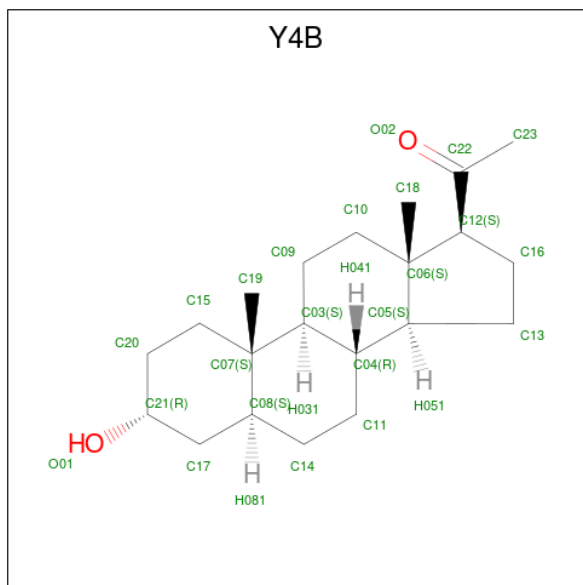
- Molecule 13 is 2-acetamido-2-deoxy-beta-D-glucopyranose (CCD ID: NAG) (formula:

C₈H₁₅NO₆).



Mol	Chain	Residues	Atoms				AltConf
13	D	1	Total	C	N	O	0
			14	8	1	5	

- Molecule 14 is allopregnanolone (CCD ID: Y4B) (formula: C₂₁H₃₄O₂).



Mol	Chain	Residues	Atoms			AltConf
14	A	1	Total	C	O	0
			23	21	2	

THR
THR
VAL
ASP
LYS
LYS
SER
ALA
ALA
GLU
LEU
VAL
PHE
GLN

- Molecule 5: Light Chain of 8E3 Fab

Chain K:  46% 51%

Y1 Q6 K9 T20 Q37 L47 Y65 T74 T101 I105 LYS ARG ALA ASP ASP ALA ALA PRO THR VAL SER ILE PHE PRO PRO SER SER GLN LEU THR THR GLY GLY ALA SER VAL VAL CYS PHE LEU ASN ASN PHE THR PRO LYS ASP ILE VAL VAL LYS

TRP LYS ILE ASP GLY SER GLU ARG GLN ASN GLY VAL LEU ASN SER TRP THR ASP GLN ASP SER LYS ASP ASP SER THR TYR SER MET SER SER THR LEU THR THR SER THR LYS ASP GLU TYR GLU SER ARG HIS SER TYR THR CYS GLU ALA THR HIS LYS THR THR SER THR PRO ILE ASN VAL LYS

SER PHE ASN ARG ASN GLU CYS

- Molecule 6: Gamma-aminobutyric acid receptor subunit alpha-3

Chain A:  55% 13% 31%

MET ILE THR THR MET TRP TRP HIS PHE THR TYR VAL THR ARG VAL VAL LEU LEU LEU ILE SER ILE LEU LEU PRO GLY THR THR SER GLN GLY THR LEU ARG GLN GLN GLU GLY ASP PHE VAL LYS ASN ASP ILE GLY LEU SER PRO LYS HIS ALA THR THR ASP ILE PRO ASP SER

THR ASP ASN ILE T37 L43 D48 D51 R55 F56 G57 A61 D68 I69 S78 D79 T80 D81 M82 T85 L110 L114 F125 M136 L142 L143 R144 M155 M167 E168 D169 M172 L179 Q207 Q214 Y215 I227 V236

R245 I262 P267 T261 V262 L264 S265 Q266 L271 N272 R273 V276 T280 V281 T285 L288 T289 P290 T291 T292 T308 D311 V316 C317 Y318 V321 F322 E327 V331 T335 K336 R337 G343 LYS LYS VAL PRO GLU ALA LEU GLU MET LYS

LYS LYS THR PRO ALA PRO THR THR LYS LYS ASN THR PHE ASN ILE VAL GLY THR THR TYR PRO ILE LEU ALA ASP THR GLY PHE SER THR ILE ALA ALA ALA PRO SER ALA SER SER THR PRO THR THR ALA ILE ALA SER PRO VAL PRO LYS ALA THR TYR VAL GLN MET ASP

SER PRO ALA GLU THR K419 T420 Y421 R422 S423 V424 S425 I430 S431 I434 L438 F442 V451 ASN ARG GLU GLU SER ALA ILE LYS GLY MET ARG LYS GLN

- Molecule 7: alpha-D-mannopyranose-(1-3)-[alpha-D-mannopyranose-(1-6)]beta-D-mannopyranose-(1-4)-2-acetamido-2-deoxy-beta-D-glucopyranose-(1-4)-2-acetamido-2-deoxy-beta-D-glucopyranose

Chain F:  60% 20% 20%

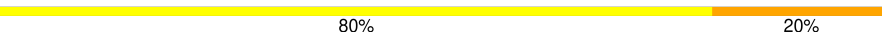
MAG1
MAG2
BNA3
MAN4
MAN5

- Molecule 7: alpha-D-mannopyranose-(1-3)-[alpha-D-mannopyranose-(1-6)]beta-D-mannopyranose-(1-4)-2-acetamido-2-deoxy-beta-D-glucopyranose-(1-4)-2-acetamido-2-deoxy-beta-D-glucopyranose

Chain G:  40% 100%

MAG1
MAG2
BNA3
MAN4
MAN5

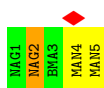
- Molecule 7: alpha-D-mannopyranose-(1-3)-[alpha-D-mannopyranose-(1-6)]beta-D-mannopyranose-(1-4)-2-acetamido-2-deoxy-beta-D-glucopyranose-(1-4)-2-acetamido-2-deoxy-beta-D-glucopyranose

Chain H:  80% 20%

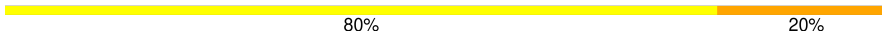


- Molecule 7: alpha-D-mannopyranose-(1-3)-[alpha-D-mannopyranose-(1-6)]beta-D-mannopyranose-(1-4)-2-acetamido-2-deoxy-beta-D-glucopyranose-(1-4)-2-acetamido-2-deoxy-beta-D-glucopyranose

Chain L:  20% 40% 40% 20%



- Molecule 7: alpha-D-mannopyranose-(1-3)-[alpha-D-mannopyranose-(1-6)]beta-D-mannopyranose-(1-4)-2-acetamido-2-deoxy-beta-D-glucopyranose-(1-4)-2-acetamido-2-deoxy-beta-D-glucopyranose

Chain M:  80% 20%



- Molecule 8: alpha-D-mannopyranose-(1-3)-alpha-D-mannopyranose-(1-6)-[alpha-D-mannopyranose-(1-3)]beta-D-mannopyranose-(1-4)-2-acetamido-2-deoxy-beta-D-glucopyranose-(1-4)-[alpha-L-fucopyranose-(1-6)]2-acetamido-2-deoxy-beta-D-glucopyranose

Chain I:  43% 57%



- Molecule 9: beta-D-mannopyranose-(1-4)-2-acetamido-2-deoxy-beta-D-glucopyranose-(1-4)-2-acetamido-2-deoxy-beta-D-glucopyranose

Chain N:  33% 67% 33%



4 Experimental information

Property	Value	Source
EM reconstruction method	SINGLE PARTICLE	Depositor
Imposed symmetry	POINT, C1	Depositor
Number of particles used	91747	Depositor
Resolution determination method	FSC 0.143 CUT-OFF	Depositor
CTF correction method	PHASE FLIPPING AND AMPLITUDE CORRECTION	Depositor
Microscope	FEI TITAN KRIOS	Depositor
Voltage (kV)	300	Depositor
Electron dose ($e^-/\text{\AA}^2$)	50.00	Depositor
Minimum defocus (nm)	800	Depositor
Maximum defocus (nm)	2100	Depositor
Magnification	Not provided	
Image detector	GATAN K3 BIOQUANTUM (6k x 4k)	Depositor
Maximum map value	0.631	Depositor
Minimum map value	-0.212	Depositor
Average map value	0.003	Depositor
Map value standard deviation	0.017	Depositor
Recommended contour level	0.075	Depositor
Map size (Å)	297.36, 297.36, 297.36	wwPDB
Map dimensions	360, 360, 360	wwPDB
Map angles (°)	90.0, 90.0, 90.0	wwPDB
Pixel spacing (Å)	0.826, 0.826, 0.826	Depositor

5 Model quality

5.1 Standard geometry

Bond lengths and bond angles in the following residue types are not validated in this section: FUC, Y4B, ABU, R5R, BMA, MAN, PIO, NAG

The Z score for a bond length (or angle) is the number of standard deviations the observed value is removed from the expected value. A bond length (or angle) with $|Z| > 5$ is considered an outlier worth inspection. RMSZ is the root-mean-square of all Z scores of the bond lengths (or angles).

Mol	Chain	Bond lengths		Bond angles	
		RMSZ	# Z >5	RMSZ	# Z >5
1	B	0.15	0/2788	0.32	0/3795
1	E	0.16	0/2781	0.33	2/3785 (0.1%)
2	C	0.13	0/2854	0.29	2/3878 (0.1%)
3	D	0.14	0/2676	0.30	0/3646
4	J	0.15	0/946	0.28	0/1284
5	K	0.15	0/815	0.31	0/1108
6	A	0.18	0/2822	0.35	2/3842 (0.1%)
All	All	0.15	0/15682	0.32	6/21338 (0.0%)

There are no bond length outliers.

All (6) bond angle outliers are listed below:

Mol	Chain	Res	Type	Atoms	Z	Observed(°)	Ideal(°)
6	A	136	MET	CA-C-N	5.36	131.34	121.70
6	A	136	MET	C-N-CA	5.36	131.34	121.70
1	E	109	VAL	CA-C-N	5.18	131.03	121.70
1	E	109	VAL	C-N-CA	5.18	131.03	121.70
2	C	111	MET	CA-C-N	5.15	130.97	121.70
2	C	111	MET	C-N-CA	5.15	130.97	121.70

There are no chirality outliers.

There are no planarity outliers.

5.2 Too-close contacts

In the following table, the Non-H and H(model) columns list the number of non-hydrogen atoms and hydrogen atoms in the chain respectively. The H(added) column lists the number of hydrogen atoms added and optimized by MolProbity. The Clashes column lists the number of clashes within the asymmetric unit, whereas Symm-Clashes lists symmetry-related clashes.

Mol	Chain	Non-H	H(model)	H(added)	Clashes	Symm-Clashes
1	B	2718	0	2721	46	0
1	E	2711	0	2714	30	0
2	C	2783	0	2763	46	0
3	D	2605	0	2581	34	0
4	J	920	0	863	9	0
5	K	796	0	756	5	0
6	A	2748	0	2744	36	0
7	F	61	0	52	1	0
7	G	61	0	52	1	0
7	H	61	0	52	1	0
7	L	61	0	52	1	0
7	M	61	0	52	2	0
8	I	82	0	70	0	0
9	N	39	0	34	0	0
10	B	7	0	0	1	0
10	E	7	0	0	0	0
11	A	47	0	44	1	0
11	C	47	0	44	4	0
12	C	23	0	0	0	0
13	D	14	0	13	0	0
14	A	23	0	0	0	0
All	All	15875	0	15607	196	0

The all-atom clashscore is defined as the number of clashes found per 1000 atoms (including hydrogen atoms). The all-atom clashscore for this structure is 6.

All (196) close contacts within the same asymmetric unit are listed below, sorted by their clash magnitude.

Atom-1	Atom-2	Interatomic distance (Å)	Clash overlap (Å)
1:B:68:ARG:NH1	1:B:121:ASP:O	2.18	0.77
2:C:204:SER:OG	2:C:207:GLY:O	2.03	0.77
6:A:257:PRO:O	6:A:261:THR:OG1	2.03	0.77
2:C:266:THR:HG1	2:C:293:TYR:HH	1.27	0.76
1:E:269:ARG:NH1	1:E:282:ASP:OD2	2.22	0.72
4:J:28:SER:OG	4:J:31:ASP:OD2	2.07	0.71
1:B:256:THR:O	1:B:260:THR:OG1	2.08	0.71
6:A:55:ARG:NH2	6:A:61:ALA:O	2.23	0.71
2:C:272:ALA:O	2:C:275:SER:OG	2.08	0.70
6:A:288:LEU:O	6:A:291:THR:OG1	2.09	0.70
6:A:273:ARG:NH1	6:A:423:SER:O	2.26	0.69
2:C:30:ARG:NE	2:C:165:GLU:OE1	2.27	0.68
4:J:94:ARG:NH2	4:J:101:ASP:OD2	2.26	0.68

Continued on next page...

Continued from previous page...

Atom-1	Atom-2	Interatomic distance (Å)	Clash overlap (Å)
1:B:236:SER:O	1:B:239:SER:OG	2.12	0.67
1:E:52:GLU:OE2	1:E:216:ARG:NH1	2.28	0.66
1:B:163:ASP:OD2	2:C:84:ARG:NE	2.28	0.66
6:A:327:GLU:OE2	6:A:431:SER:OG	2.14	0.66
2:C:312:ARG:O	2:C:386:ASN:ND2	2.28	0.65
1:E:76:VAL:HG23	1:E:77:ILE:HG23	1.77	0.65
1:B:284:TYR:OH	1:B:479:ASN:OD1	2.12	0.65
6:A:167:LEU:O	6:A:308:THR:HG22	1.97	0.65
1:E:301:LEU:O	1:E:301:LEU:HD22	1.96	0.65
1:B:52:GLU:OE1	1:B:216:ARG:NH2	2.30	0.65
2:C:311:LYS:NZ	11:C:601:PIO:O42	2.30	0.65
5:K:9:LYS:O	5:K:9:LYS:NZ	2.25	0.65
1:E:182:GLU:N	1:E:182:GLU:OE1	2.29	0.64
1:E:470:PHE:O	1:E:474:VAL:HG12	1.97	0.64
1:B:221:PHE:O	1:B:225:THR:OG1	2.13	0.64
2:C:249:GLU:HG2	2:C:315:ALA:HB2	1.79	0.64
3:D:177:GLU:OE1	3:D:177:GLU:N	2.31	0.64
1:B:153:GLU:N	1:B:153:GLU:OE1	2.32	0.64
3:D:285:LYS:O	3:D:285:LYS:NZ	2.30	0.63
1:B:107:HIS:NE2	1:B:131:THR:OG1	2.24	0.63
6:A:276:VAL:O	6:A:280:THR:OG1	2.10	0.63
1:B:202:THR:OG1	10:B:501:ABU:O	2.13	0.63
1:E:243:ASN:ND2	1:E:245:ASP:OD1	2.31	0.63
6:A:207:GLN:N	6:A:207:GLN:OE1	2.32	0.63
2:C:97:ASP:OD1	2:C:158:SER:OG	2.15	0.62
6:A:227:ILE:HD12	6:A:236:VAL:HG21	1.80	0.62
6:A:425:SER:OG	11:A:501:PIO:O12	2.09	0.62
1:B:161:THR:HG21	1:B:197:LYS:HD2	1.80	0.62
4:J:6:GLN:O	4:J:105:GLN:NE2	2.33	0.61
7:M:2:NAG:H83	7:M:2:NAG:H3	1.83	0.61
2:C:251:VAL:O	2:C:255:THR:OG1	2.15	0.60
1:E:286:MET:HE1	6:A:252:ILE:HG23	1.83	0.59
1:B:99:LEU:HD21	2:C:47:THR:HG21	1.83	0.59
2:C:387:SER:OG	11:C:601:PIO:O53	2.11	0.59
1:E:149:ASN:OD1	1:E:150:CYS:N	2.36	0.58
2:C:266:THR:OG1	2:C:293:TYR:OH	2.06	0.58
1:B:187:SER:N	1:B:215:LYS:O	2.37	0.58
2:C:258:GLY:O	2:C:261:THR:OG1	2.20	0.58
6:A:308:THR:N	6:A:311:ASP:OD2	2.37	0.57
3:D:181:TYR:HB3	3:D:223:MET:HE3	1.86	0.57
1:B:99:LEU:HD21	2:C:47:THR:CG2	2.33	0.57

Continued on next page...

Continued from previous page...

Atom-1	Atom-2	Interatomic distance (Å)	Clash overlap (Å)
2:C:143:GLU:N	2:C:143:GLU:OE1	2.37	0.57
2:C:233:CYS:O	2:C:237:VAL:HG23	2.04	0.57
2:C:293:TYR:CE1	3:D:246:LEU:HD13	2.40	0.57
1:E:259:LEU:O	1:E:262:THR:OG1	2.17	0.57
6:A:265:SER:OG	6:A:321:VAL:HG12	2.05	0.56
1:E:483:TRP:O	1:E:487:VAL:N	2.39	0.55
4:J:6:GLN:OE1	4:J:92:CYS:N	2.37	0.55
7:L:2:NAG:H83	7:L:2:NAG:H3	1.89	0.55
1:B:255:ILE:HD11	2:C:256:VAL:HG12	1.88	0.55
1:E:260:THR:O	1:E:263:THR:OG1	2.14	0.55
6:A:78:SER:O	6:A:82:MET:N	2.38	0.55
6:A:215:TYR:OH	6:A:245:ARG:NH1	2.39	0.55
1:B:85:ASN:O	1:B:114:ARG:NH2	2.40	0.55
1:B:99:LEU:HD23	1:B:99:LEU:O	2.07	0.55
1:E:190:ASP:OD1	1:E:191:TYR:N	2.39	0.55
1:E:259:LEU:O	1:E:263:THR:HG23	2.06	0.55
2:C:87:ASN:OD1	2:C:116:LYS:NZ	2.22	0.55
1:E:238:VAL:HG13	1:E:253:LEU:HD21	1.89	0.55
2:C:231:LEU:HD12	2:C:235:MET:HE2	1.89	0.54
3:D:81:THR:OG1	3:D:139:VAL:O	2.13	0.54
3:D:182:GLN:C	3:D:223:MET:HE1	2.32	0.54
3:D:56:ASP:OD2	3:D:186:SER:OG	2.25	0.54
6:A:337:ARG:NH1	6:A:421:TYR:O	2.41	0.54
6:A:68:ASP:OD1	6:A:69:ILE:N	2.41	0.54
1:B:143:TYR:O	1:B:280:ALA:HB3	2.08	0.54
7:G:2:NAG:O3	7:G:3:BMA:O5	2.20	0.54
1:B:7:SER:O	1:B:10:SER:OG	2.17	0.53
1:B:229:SER:O	1:B:233:THR:OG1	2.26	0.53
3:D:45:ASP:OD2	3:D:49:LYS:NZ	2.41	0.53
3:D:63:GLY:N	3:D:73:THR:O	2.40	0.53
2:C:142:LEU:HD13	2:C:276:LEU:HD21	1.91	0.53
1:B:268:LEU:O	1:B:271:THR:OG1	2.18	0.53
2:C:257:PHE:O	2:C:261:THR:HG23	2.08	0.53
2:C:389:SER:OG	11:C:601:PIO:O11	2.26	0.52
2:C:312:ARG:NH1	11:C:601:PIO:O51	2.42	0.52
6:A:430:ILE:CG2	6:A:434:ILE:HD12	2.39	0.52
4:J:92:CYS:O	4:J:104:GLY:N	2.43	0.52
1:B:161:THR:HG21	1:B:197:LYS:CD	2.40	0.52
2:C:167:VAL:HA	2:C:210:VAL:HG11	1.92	0.51
5:K:37:GLN:HB2	5:K:47:LEU:HD11	1.92	0.51
2:C:302:GLU:O	2:C:305:THR:OG1	2.23	0.51

Continued on next page...

Continued from previous page...

Atom-1	Atom-2	Interatomic distance (Å)	Clash overlap (Å)
1:E:235:LEU:O	1:E:238:VAL:HG12	2.09	0.51
1:B:254:GLY:O	1:B:257:THR:OG1	2.27	0.50
1:E:192:LYS:C	1:E:193:LEU:HD23	2.35	0.50
2:C:104:LYS:NZ	2:C:137:GLU:OE2	2.43	0.50
3:D:274:LEU:HD21	1:E:256:THR:OG1	2.12	0.50
1:B:101:ASP:OD1	2:C:131:ARG:NH2	2.43	0.49
1:B:47:ILE:HG22	1:B:47:ILE:O	2.12	0.49
1:B:193:LEU:HD12	1:B:193:LEU:O	2.12	0.49
1:E:80:ASN:N	1:E:80:ASN:OD1	2.43	0.49
4:J:66:LYS:NZ	4:J:82(B):SER:O	2.46	0.49
1:B:213:LYS:HB2	7:M:1:NAG:H82	1.93	0.49
1:E:291:PHE:CE2	1:E:474:VAL:HG13	2.48	0.49
3:D:268:LEU:O	3:D:271:THR:OG1	2.30	0.49
1:E:185:GLN:OE1	1:E:185:GLN:N	2.44	0.49
1:E:279:LYS:NZ	1:E:282:ASP:OD1	2.43	0.49
3:D:43:ARG:NH1	3:D:44:PRO:O	2.46	0.49
1:E:191:TYR:CE2	1:E:193:LEU:HD21	2.48	0.48
3:D:248:VAL:O	3:D:251:SER:OG	2.30	0.48
4:J:38:LYS:HB2	4:J:48:ILE:HD11	1.95	0.48
1:B:259:LEU:HD21	2:C:260:THR:HG23	1.96	0.48
2:C:240:SER:OG	2:C:296:VAL:HG12	2.14	0.48
2:C:145:PHE:O	2:C:284:ALA:HB3	2.14	0.48
2:C:198:ASP:OD1	2:C:199:SER:N	2.46	0.47
7:H:2:NAG:H83	7:H:2:NAG:H3	1.96	0.47
1:E:256:THR:O	1:E:260:THR:HG23	2.14	0.47
1:B:110:THR:HG23	6:A:155:MET:SD	2.54	0.47
3:D:157:ASN:OD1	3:D:157:ASN:N	2.47	0.47
6:A:169:ASP:O	6:A:172:MET:N	2.48	0.47
1:B:202:THR:HG22	2:C:119:ARG:NH1	2.29	0.47
2:C:302:GLU:O	2:C:306:VAL:HG23	2.15	0.47
3:D:245:THR:O	3:D:249:VAL:HG23	2.14	0.47
1:B:231:LEU:O	1:B:235:LEU:N	2.45	0.46
6:A:125:PHE:HE2	6:A:179:LEU:HD11	1.81	0.46
2:C:249:GLU:O	2:C:251:VAL:N	2.48	0.46
4:J:101:ASP:OD1	5:K:55:TYR:OH	2.18	0.46
3:D:150:GLU:OE2	3:D:152:GLN:NE2	2.47	0.46
3:D:219:ASP:OD1	3:D:219:ASP:N	2.45	0.46
2:C:255:THR:O	2:C:259:VAL:HG12	2.16	0.46
2:C:222:ILE:O	2:C:226:VAL:HG23	2.16	0.45
1:B:45:ALA:O	1:B:46:SER:OG	2.29	0.45
3:D:280:SER:OG	3:D:284:ARG:NH1	2.48	0.45

Continued on next page...

Continued from previous page...

Atom-1	Atom-2	Interatomic distance (Å)	Clash overlap (Å)
4:J:37:VAL:HG11	4:J:45:LEU:HD22	1.98	0.45
3:D:174:TYR:CG	3:D:179:ILE:HD12	2.52	0.45
3:D:130:MET:HE1	3:D:132:ARG:NE	2.31	0.45
1:B:41:ASN:N	1:B:41:ASN:OD1	2.50	0.45
1:E:44:ILE:HG22	1:E:181:ILE:HD11	1.99	0.45
6:A:79:ASP:OD1	6:A:80:THR:N	2.50	0.45
1:B:43:ASP:OD1	1:B:176:THR:OG1	2.35	0.44
6:A:142:LEU:HD12	6:A:143:LEU:H	1.82	0.44
5:K:6:GLN:OE1	5:K:101:THR:N	2.50	0.44
2:C:291:VAL:HG11	2:C:406:PHE:CE1	2.53	0.44
3:D:72:TYR:CE1	3:D:149:ALA:HB3	2.52	0.44
3:D:257:ILE:O	3:D:265:ARG:NH2	2.50	0.44
6:A:43:LEU:HD21	6:A:110:LEU:HD22	1.98	0.44
6:A:214:GLN:OE1	6:A:214:GLN:N	2.47	0.44
1:B:47:ILE:HD12	1:B:181:ILE:HG21	2.00	0.44
6:A:281:VAL:O	6:A:285:THR:OG1	2.22	0.44
2:C:291:VAL:HG11	2:C:406:PHE:CZ	2.53	0.43
6:A:142:LEU:HD11	6:A:144:ARG:NE	2.33	0.43
1:B:190:ASP:OD1	1:B:191:TYR:N	2.50	0.43
1:B:275:ILE:HD12	1:B:275:ILE:O	2.18	0.43
3:D:68:ILE:HD11	3:D:286:SER:O	2.19	0.43
3:D:209:THR:OG1	3:D:224:SER:OG	2.36	0.43
1:B:473:VAL:O	1:B:476:SER:OG	2.19	0.42
3:D:254:SER:HA	3:D:257:ILE:HD12	2.01	0.42
6:A:55:ARG:NH2	6:A:57:GLY:O	2.52	0.42
2:C:75:LYS:NZ	2:C:123:ASP:O	2.52	0.42
6:A:327:GLU:O	6:A:331:VAL:HG23	2.19	0.42
1:B:84:ASP:OD1	1:B:85:ASN:N	2.52	0.42
1:B:161:THR:HG23	1:B:204:SER:O	2.20	0.42
3:D:274:LEU:O	3:D:277:THR:OG1	2.32	0.42
6:A:289:THR:O	6:A:292:THR:OG1	2.33	0.42
1:B:233:THR:O	1:B:236:SER:OG	2.36	0.42
6:A:438:LEU:O	6:A:438:LEU:HD13	2.20	0.42
1:B:93:VAL:CG2	2:C:113:MET:HE3	2.50	0.42
1:E:59:LEU:HD23	1:E:60:THR:N	2.35	0.42
3:D:234:GLY:O	3:D:237:THR:OG1	2.37	0.41
6:A:316:VAL:HG11	6:A:442:PHE:CE1	2.55	0.41
3:D:300:VAL:O	3:D:304:PHE:N	2.49	0.41
3:D:267:SER:O	3:D:271:THR:HG23	2.20	0.41
6:A:110:LEU:HD13	6:A:114:LEU:HD13	2.02	0.41
1:E:483:TRP:O	1:E:487:VAL:HG23	2.20	0.41

Continued on next page...

Continued from previous page...

Atom-1	Atom-2	Interatomic distance (Å)	Clash overlap (Å)
1:B:281:ILE:O	1:B:285:LEU:HD23	2.21	0.41
2:C:173:GLU:OE1	2:C:173:GLU:N	2.46	0.41
1:E:26:ARG:HD2	6:A:43:LEU:HD23	2.03	0.41
3:D:43:ARG:NH1	3:D:51:THR:OG1	2.53	0.41
1:B:72:LEU:HD12	1:B:124:VAL:HG21	2.03	0.41
1:B:192:LYS:O	1:B:211:SER:OG	2.30	0.41
2:C:287:TRP:O	2:C:291:VAL:HG12	2.21	0.41
1:B:178:VAL:HG21	1:B:191:TYR:CD1	2.56	0.41
6:A:291:THR:HG22	6:A:318:TYR:OH	2.21	0.41
5:K:20:THR:HG22	5:K:74:THR:HG22	2.03	0.40
2:C:147:MET:HG3	2:C:222:ILE:HD13	2.03	0.40
3:D:34:LEU:HD22	3:D:87:LEU:HA	2.03	0.40
3:D:158:PHE:O	3:D:295:ALA:HB3	2.20	0.40
7:F:4:MAN:O6	7:F:4:MAN:O4	2.33	0.40
3:D:206:LEU:O	3:D:206:LEU:HD12	2.22	0.40
1:E:85:ASN:OD1	1:E:86:ARG:N	2.54	0.40
1:E:153:GLU:OE1	1:E:207:ARG:NH1	2.54	0.40
6:A:337:ARG:NE	6:A:420:THR:OG1	2.55	0.40
2:C:307:ASN:OD1	3:D:258:ASN:ND2	2.55	0.40

There are no symmetry-related clashes.

5.3 Torsion angles

5.3.1 Protein backbone

In the following table, the Percentiles column shows the percent Ramachandran outliers of the chain as a percentile score with respect to all PDB entries followed by that with respect to all EM entries.

The Analysed column shows the number of residues for which the backbone conformation was analysed, and the total number of residues.

Mol	Chain	Analysed	Favoured	Allowed	Outliers	Percentiles	
1	B	328/512 (64%)	315 (96%)	13 (4%)	0	100	100
1	E	327/512 (64%)	316 (97%)	11 (3%)	0	100	100
2	C	340/455 (75%)	335 (98%)	5 (2%)	0	100	100
3	D	314/474 (66%)	301 (96%)	13 (4%)	0	100	100
4	J	115/223 (52%)	112 (97%)	3 (3%)	0	100	100

Continued on next page...

Continued from previous page...

Mol	Chain	Analysed	Favoured	Allowed	Outliers	Percentiles	
5	K	103/213 (48%)	95 (92%)	8 (8%)	0	100	100
6	A	336/492 (68%)	324 (96%)	12 (4%)	0	100	100
All	All	1863/2881 (65%)	1798 (96%)	65 (4%)	0	100	100

There are no Ramachandran outliers to report.

5.3.2 Protein sidechains ⓘ

In the following table, the Percentiles column shows the percent sidechain outliers of the chain as a percentile score with respect to all PDB entries followed by that with respect to all EM entries.

The Analysed column shows the number of residues for which the sidechain conformation was analysed, and the total number of residues.

Mol	Chain	Analysed	Rotameric	Outliers	Percentiles	
1	B	302/457 (66%)	291 (96%)	11 (4%)	30	65
1	E	301/457 (66%)	294 (98%)	7 (2%)	45	77
2	C	306/404 (76%)	301 (98%)	5 (2%)	58	84
3	D	292/436 (67%)	286 (98%)	6 (2%)	48	78
4	J	98/195 (50%)	98 (100%)	0	100	100
5	K	83/188 (44%)	83 (100%)	0	100	100
6	A	304/435 (70%)	291 (96%)	13 (4%)	25	57
All	All	1686/2572 (66%)	1644 (98%)	42 (2%)	43	75

All (42) residues with a non-rotameric sidechain are listed below:

Mol	Chain	Res	Type
1	B	79	LEU
1	B	109	VAL
1	B	132	THR
1	B	142	ARG
1	B	193	LEU
1	B	217	ASN
1	B	239	SER
1	B	260	THR
1	B	269	ARG
1	B	270	GLU

Continued on next page...

Continued from previous page...

Mol	Chain	Res	Type
1	B	275	ILE
2	C	87	ASN
2	C	113	MET
2	C	214	THR
2	C	257	PHE
2	C	285	MET
3	D	95	VAL
3	D	153	LEU
3	D	206	LEU
3	D	221	VAL
3	D	233	MET
3	D	239	GLN
1	E	27	LEU
1	E	80	ASN
1	E	101	ASP
1	E	193	LEU
1	E	271	THR
1	E	278	VAL
1	E	301	LEU
6	A	37	THR
6	A	48	ASP
6	A	51	ASP
6	A	85	THR
6	A	136	MET
6	A	169	ASP
6	A	263	ILE
6	A	266	GLN
6	A	271	LEU
6	A	276	VAL
6	A	322	PHE
6	A	335	THR
6	A	438	LEU

Sometimes sidechains can be flipped to improve hydrogen bonding and reduce clashes. All (6) such sidechains are listed below:

Mol	Chain	Res	Type
3	D	239	GLN
3	D	258	ASN
4	J	33	ASN
5	K	37	GLN
5	K	87	HIS
6	A	266	GLN

5.3.3 RNA ⓘ

There are no RNA molecules in this entry.

5.4 Non-standard residues in protein, DNA, RNA chains ⓘ

There are no non-standard protein/DNA/RNA residues in this entry.

5.5 Carbohydrates ⓘ

35 monosaccharides are modelled in this entry.

In the following table, the Counts columns list the number of bonds (or angles) for which Mogul statistics could be retrieved, the number of bonds (or angles) that are observed in the model and the number of bonds (or angles) that are defined in the Chemical Component Dictionary. The Link column lists molecule types, if any, to which the group is linked. The Z score for a bond length (or angle) is the number of standard deviations the observed value is removed from the expected value. A bond length (or angle) with $|Z| > 2$ is considered an outlier worth inspection. RMSZ is the root-mean-square of all Z scores of the bond lengths (or angles).

Mol	Type	Chain	Res	Link	Bond lengths			Bond angles		
					Counts	RMSZ	$\# Z > 2$	Counts	RMSZ	$\# Z > 2$
7	NAG	F	1	7,2	14,14,15	0.44	0	17,19,21	0.49	0
7	NAG	F	2	7	14,14,15	0.21	0	17,19,21	0.50	0
7	BMA	F	3	7	11,11,12	0.65	0	15,15,17	0.74	0
7	MAN	F	4	7	11,11,12	0.73	1 (9%)	15,15,17	1.14	2 (13%)
7	MAN	F	5	7	11,11,12	0.60	0	15,15,17	0.88	2 (13%)
7	NAG	G	1	1,7	14,14,15	0.65	0	17,19,21	0.79	1 (5%)
7	NAG	G	2	7	14,14,15	0.23	0	17,19,21	0.46	0
7	BMA	G	3	7	11,11,12	0.50	0	15,15,17	0.77	0
7	MAN	G	4	7	11,11,12	0.68	0	15,15,17	1.17	2 (13%)
7	MAN	G	5	7	11,11,12	0.62	0	15,15,17	0.90	1 (6%)
7	NAG	H	1	1,7	14,14,15	0.93	1 (7%)	17,19,21	0.79	1 (5%)
7	NAG	H	2	7	14,14,15	0.39	0	17,19,21	1.34	2 (11%)
7	BMA	H	3	7	11,11,12	1.04	1 (9%)	15,15,17	1.49	2 (13%)
7	MAN	H	4	7	11,11,12	0.78	1 (9%)	15,15,17	1.17	2 (13%)
7	MAN	H	5	7	11,11,12	0.77	1 (9%)	15,15,17	1.02	2 (13%)
8	NAG	I	1	6,8	14,14,15	0.16	0	17,19,21	0.58	0
8	NAG	I	2	8	14,14,15	0.24	0	17,19,21	0.68	1 (5%)
8	BMA	I	3	8	11,11,12	0.70	0	15,15,17	0.82	0
8	MAN	I	4	8	11,11,12	0.90	1 (9%)	15,15,17	1.21	2 (13%)

Mol	Type	Chain	Res	Link	Bond lengths			Bond angles		
					Counts	RMSZ	# Z > 2	Counts	RMSZ	# Z > 2
8	MAN	I	5	8	11,11,12	0.64	0	15,15,17	1.23	2 (13%)
8	MAN	I	6	8	11,11,12	0.61	0	15,15,17	0.97	2 (13%)
8	FUC	I	7	8	10,10,11	0.64	0	14,14,16	0.81	0
7	NAG	L	1	1,7	14,14,15	0.46	0	17,19,21	0.53	0
7	NAG	L	2	7	14,14,15	0.41	0	17,19,21	1.26	1 (5%)
7	BMA	L	3	7	11,11,12	0.41	0	15,15,17	0.72	0
7	MAN	L	4	7	11,11,12	0.70	0	15,15,17	0.93	2 (13%)
7	MAN	L	5	7	11,11,12	0.70	0	15,15,17	0.95	1 (6%)
7	NAG	M	1	1,7	14,14,15	0.44	0	17,19,21	0.43	0
7	NAG	M	2	7	14,14,15	0.31	0	17,19,21	1.43	2 (11%)
7	BMA	M	3	7	11,11,12	0.84	1 (9%)	15,15,17	1.21	2 (13%)
7	MAN	M	4	7	11,11,12	0.79	1 (9%)	15,15,17	1.20	2 (13%)
7	MAN	M	5	7	11,11,12	0.84	1 (9%)	15,15,17	1.21	3 (20%)
9	NAG	N	1	9,3	14,14,15	0.26	0	17,19,21	0.73	1 (5%)
9	NAG	N	2	9	14,14,15	0.22	0	17,19,21	0.49	0
9	BMA	N	3	9	11,11,12	0.63	0	15,15,17	0.73	0

In the following table, the Chirals column lists the number of chiral outliers, the number of chiral centers analysed, the number of these observed in the model and the number defined in the Chemical Component Dictionary. Similar counts are reported in the Torsion and Rings columns. '-' means no outliers of that kind were identified.

Mol	Type	Chain	Res	Link	Chirals	Torsions	Rings
7	NAG	F	1	7,2	-	4/6/23/26	0/1/1/1
7	NAG	F	2	7	-	2/6/23/26	0/1/1/1
7	BMA	F	3	7	-	0/2/19/22	0/1/1/1
7	MAN	F	4	7	-	2/2/19/22	0/1/1/1
7	MAN	F	5	7	-	0/2/19/22	0/1/1/1
7	NAG	G	1	1,7	-	4/6/23/26	0/1/1/1
7	NAG	G	2	7	-	1/6/23/26	0/1/1/1
7	BMA	G	3	7	-	0/2/19/22	0/1/1/1
7	MAN	G	4	7	-	1/2/19/22	1/1/1/1
7	MAN	G	5	7	-	1/2/19/22	0/1/1/1
7	NAG	H	1	1,7	-	2/6/23/26	0/1/1/1
7	NAG	H	2	7	-	6/6/23/26	0/1/1/1
7	BMA	H	3	7	-	2/2/19/22	0/1/1/1
7	MAN	H	4	7	-	0/2/19/22	0/1/1/1
7	MAN	H	5	7	-	2/2/19/22	1/1/1/1

Continued on next page...

Continued from previous page...

Mol	Type	Chain	Res	Link	Chirals	Torsions	Rings
8	NAG	I	1	6,8	-	0/6/23/26	0/1/1/1
8	NAG	I	2	8	-	4/6/23/26	0/1/1/1
8	BMA	I	3	8	-	2/2/19/22	0/1/1/1
8	MAN	I	4	8	-	1/2/19/22	1/1/1/1
8	MAN	I	5	8	-	0/2/19/22	1/1/1/1
8	MAN	I	6	8	-	1/2/19/22	0/1/1/1
8	FUC	I	7	8	-	-	0/1/1/1
7	NAG	L	1	1,7	-	4/6/23/26	0/1/1/1
7	NAG	L	2	7	-	6/6/23/26	0/1/1/1
7	BMA	L	3	7	-	2/2/19/22	0/1/1/1
7	MAN	L	4	7	-	0/2/19/22	1/1/1/1
7	MAN	L	5	7	-	2/2/19/22	0/1/1/1
7	NAG	M	1	1,7	-	0/6/23/26	0/1/1/1
7	NAG	M	2	7	-	4/6/23/26	0/1/1/1
7	BMA	M	3	7	-	2/2/19/22	0/1/1/1
7	MAN	M	4	7	-	0/2/19/22	0/1/1/1
7	MAN	M	5	7	-	2/2/19/22	0/1/1/1
9	NAG	N	1	9,3	-	4/6/23/26	0/1/1/1
9	NAG	N	2	9	-	0/6/23/26	0/1/1/1
9	BMA	N	3	9	-	0/2/19/22	0/1/1/1

All (9) bond length outliers are listed below:

Mol	Chain	Res	Type	Atoms	Z	Observed(Å)	Ideal(Å)
7	H	1	NAG	O5-C1	-3.16	1.38	1.43
7	H	4	MAN	C1-C2	2.46	1.58	1.52
7	M	5	MAN	C1-C2	2.43	1.58	1.52
7	M	4	MAN	C1-C2	2.42	1.58	1.52
8	I	4	MAN	C1-C2	2.40	1.57	1.52
7	F	4	MAN	C1-C2	2.29	1.57	1.52
7	H	3	BMA	C4-C5	2.18	1.57	1.53
7	M	3	BMA	C1-C2	2.05	1.57	1.52
7	H	5	MAN	C1-C2	2.03	1.57	1.52

All (38) bond angle outliers are listed below:

Mol	Chain	Res	Type	Atoms	Z	Observed(°)	Ideal(°)
7	H	3	BMA	C1-O5-C5	4.64	118.41	112.19
7	M	2	NAG	C2-N2-C7	4.37	128.76	122.90
7	H	2	NAG	C2-N2-C7	4.26	128.61	122.90

Continued on next page...

Continued from previous page...

Mol	Chain	Res	Type	Atoms	Z	Observed(°)	Ideal(°)
7	L	2	NAG	C2-N2-C7	4.25	128.60	122.90
8	I	5	MAN	C1-O5-C5	3.84	117.33	112.19
7	G	4	MAN	C1-O5-C5	3.62	117.04	112.19
8	I	4	MAN	C1-O5-C5	3.62	117.04	112.19
7	M	4	MAN	C1-O5-C5	2.86	116.02	112.19
7	H	4	MAN	C1-O5-C5	2.74	115.86	112.19
7	H	5	MAN	C1-O5-C5	2.72	115.83	112.19
7	F	4	MAN	C1-O5-C5	2.67	115.77	112.19
7	H	1	NAG	C3-C4-C5	2.59	114.93	110.23
7	L	4	MAN	C1-O5-C5	2.51	115.55	112.19
7	G	1	NAG	C2-N2-C7	2.47	126.21	122.90
7	H	2	NAG	C1-C2-N2	2.46	114.31	110.43
7	M	5	MAN	O2-C2-C3	-2.34	105.30	110.15
7	L	5	MAN	O2-C2-C3	-2.33	105.33	110.15
7	M	4	MAN	O2-C2-C3	-2.32	105.34	110.15
7	H	4	MAN	O2-C2-C3	-2.30	105.40	110.15
7	F	4	MAN	O2-C2-C3	-2.29	105.41	110.15
8	I	5	MAN	O2-C2-C3	-2.28	105.43	110.15
9	N	1	NAG	C2-N2-C7	2.28	125.95	122.90
7	M	2	NAG	C1-C2-N2	2.26	113.99	110.43
8	I	6	MAN	C1-O5-C5	2.22	115.17	112.19
7	M	5	MAN	C1-C2-C3	2.20	112.85	109.64
7	H	3	BMA	C3-C4-C5	2.19	114.21	110.23
7	M	3	BMA	C1-C2-C3	-2.18	106.46	109.64
8	I	2	NAG	C2-N2-C7	2.17	125.81	122.90
7	M	3	BMA	C1-O5-C5	-2.17	109.28	112.19
8	I	6	MAN	O2-C2-C3	-2.15	105.69	110.15
7	H	5	MAN	O2-C2-C3	-2.15	105.71	110.15
7	G	4	MAN	O2-C2-C3	-2.14	105.72	110.15
7	M	5	MAN	C1-O5-C5	2.13	115.05	112.19
7	F	5	MAN	O2-C2-C3	-2.10	105.80	110.15
7	G	5	MAN	O2-C2-C3	-2.09	105.83	110.15
8	I	4	MAN	O2-C2-C3	-2.06	105.89	110.15
7	L	4	MAN	O2-C2-C3	-2.03	105.95	110.15
7	F	5	MAN	C1-O5-C5	2.00	114.87	112.19

There are no chirality outliers.

All (61) torsion outliers are listed below:

Mol	Chain	Res	Type	Atoms
7	L	3	BMA	O5-C5-C6-O6
7	F	4	MAN	O5-C5-C6-O6

Continued on next page...

Continued from previous page...

Mol	Chain	Res	Type	Atoms
7	L	5	MAN	O5-C5-C6-O6
7	H	3	BMA	C4-C5-C6-O6
7	F	1	NAG	O5-C5-C6-O6
9	N	1	NAG	O5-C5-C6-O6
7	L	3	BMA	C4-C5-C6-O6
7	G	1	NAG	O5-C5-C6-O6
7	L	5	MAN	C4-C5-C6-O6
8	I	3	BMA	C4-C5-C6-O6
9	N	1	NAG	C4-C5-C6-O6
7	L	2	NAG	O5-C5-C6-O6
7	M	3	BMA	O5-C5-C6-O6
7	F	4	MAN	C4-C5-C6-O6
7	M	5	MAN	O5-C5-C6-O6
7	G	1	NAG	C4-C5-C6-O6
7	G	1	NAG	C8-C7-N2-C2
7	G	1	NAG	O7-C7-N2-C2
7	H	2	NAG	C8-C7-N2-C2
7	H	2	NAG	O7-C7-N2-C2
7	L	1	NAG	C8-C7-N2-C2
7	L	1	NAG	O7-C7-N2-C2
7	L	2	NAG	C8-C7-N2-C2
7	L	2	NAG	O7-C7-N2-C2
7	M	2	NAG	C8-C7-N2-C2
7	M	2	NAG	O7-C7-N2-C2
8	I	2	NAG	C8-C7-N2-C2
8	I	2	NAG	O7-C7-N2-C2
9	N	1	NAG	C8-C7-N2-C2
9	N	1	NAG	O7-C7-N2-C2
8	I	2	NAG	O5-C5-C6-O6
7	H	3	BMA	O5-C5-C6-O6
7	M	5	MAN	C4-C5-C6-O6
7	H	5	MAN	C4-C5-C6-O6
7	L	1	NAG	O5-C5-C6-O6
7	L	1	NAG	C4-C5-C6-O6
8	I	3	BMA	O5-C5-C6-O6
7	H	5	MAN	O5-C5-C6-O6
7	F	1	NAG	C4-C5-C6-O6
8	I	6	MAN	O5-C5-C6-O6
7	G	5	MAN	O5-C5-C6-O6
7	L	2	NAG	C4-C5-C6-O6
8	I	4	MAN	O5-C5-C6-O6
7	G	4	MAN	O5-C5-C6-O6

Continued on next page...

Continued from previous page...

Mol	Chain	Res	Type	Atoms
7	M	3	BMA	C4-C5-C6-O6
7	G	2	NAG	O5-C5-C6-O6
8	I	2	NAG	C4-C5-C6-O6
7	F	1	NAG	C1-C2-N2-C7
7	F	2	NAG	C1-C2-N2-C7
7	H	2	NAG	C1-C2-N2-C7
7	L	2	NAG	C1-C2-N2-C7
7	H	2	NAG	C4-C5-C6-O6
7	F	1	NAG	C3-C2-N2-C7
7	F	2	NAG	C3-C2-N2-C7
7	H	1	NAG	C3-C2-N2-C7
7	L	2	NAG	C3-C2-N2-C7
7	M	2	NAG	C3-C2-N2-C7
7	H	2	NAG	O5-C5-C6-O6
7	H	1	NAG	C1-C2-N2-C7
7	M	2	NAG	C1-C2-N2-C7
7	H	2	NAG	C3-C2-N2-C7

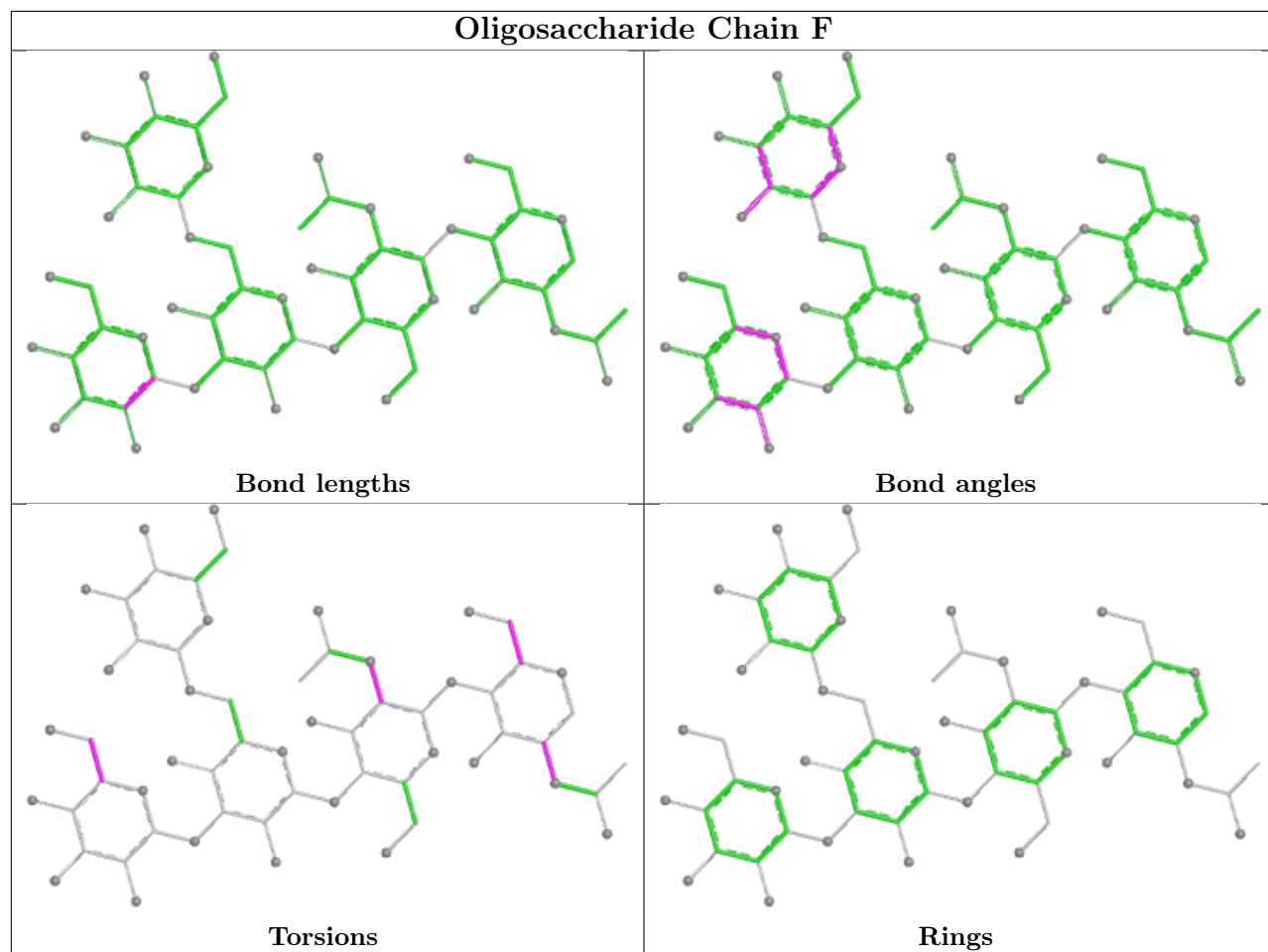
All (5) ring outliers are listed below:

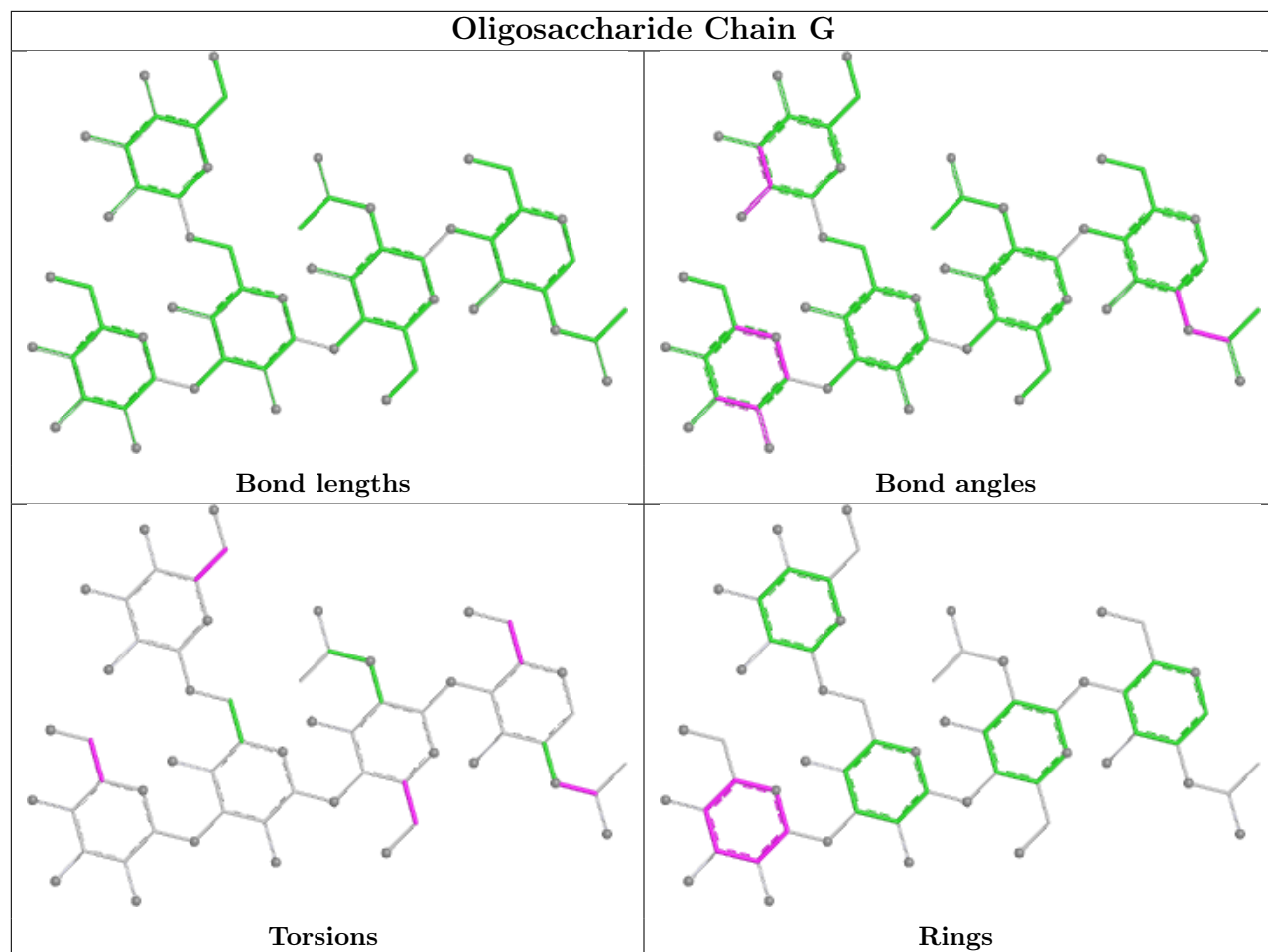
Mol	Chain	Res	Type	Atoms
7	L	4	MAN	C1-C2-C3-C4-C5-O5
8	I	5	MAN	C1-C2-C3-C4-C5-O5
7	G	4	MAN	C1-C2-C3-C4-C5-O5
7	H	5	MAN	C1-C2-C3-C4-C5-O5
8	I	4	MAN	C1-C2-C3-C4-C5-O5

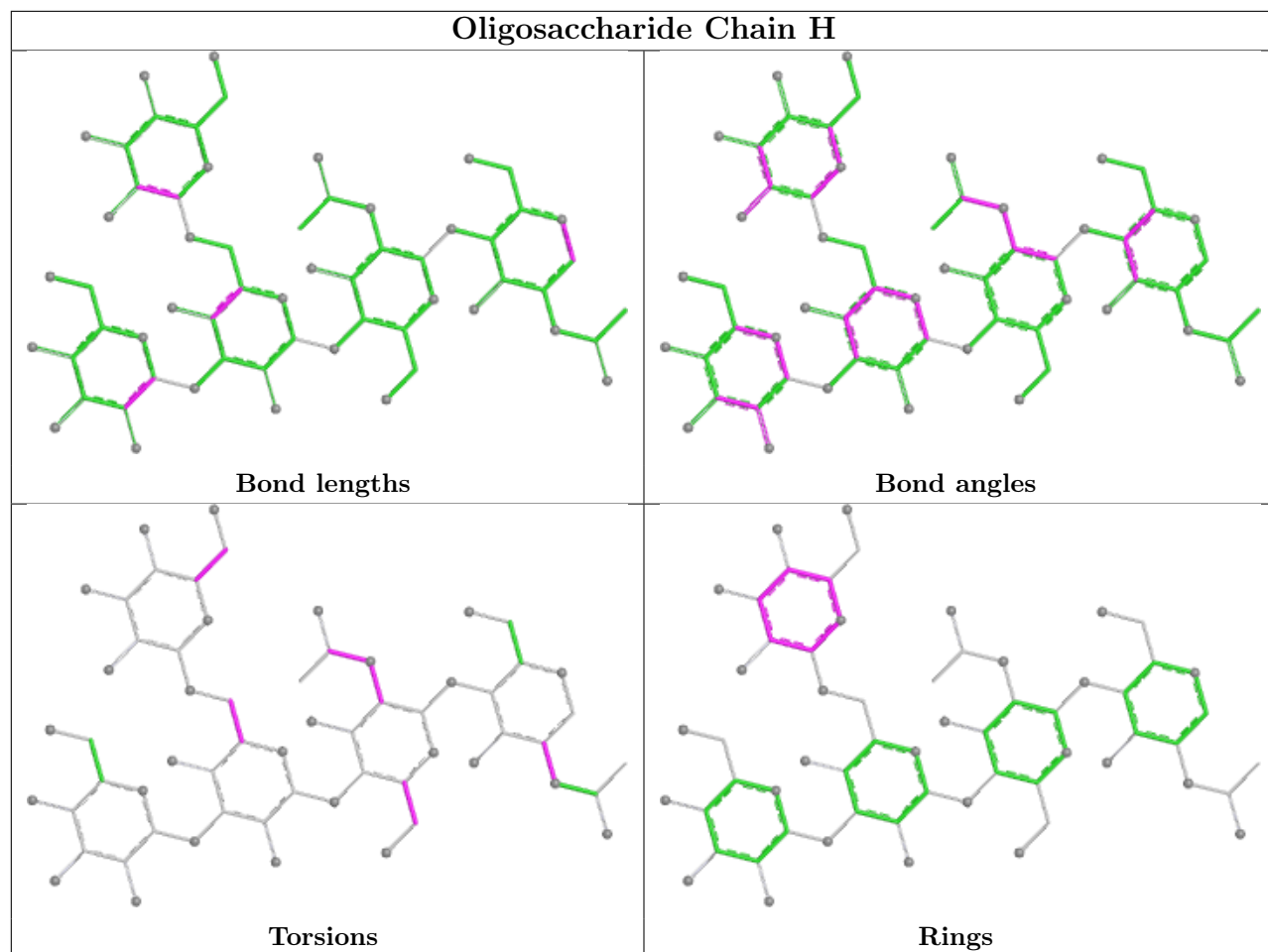
7 monomers are involved in 6 short contacts:

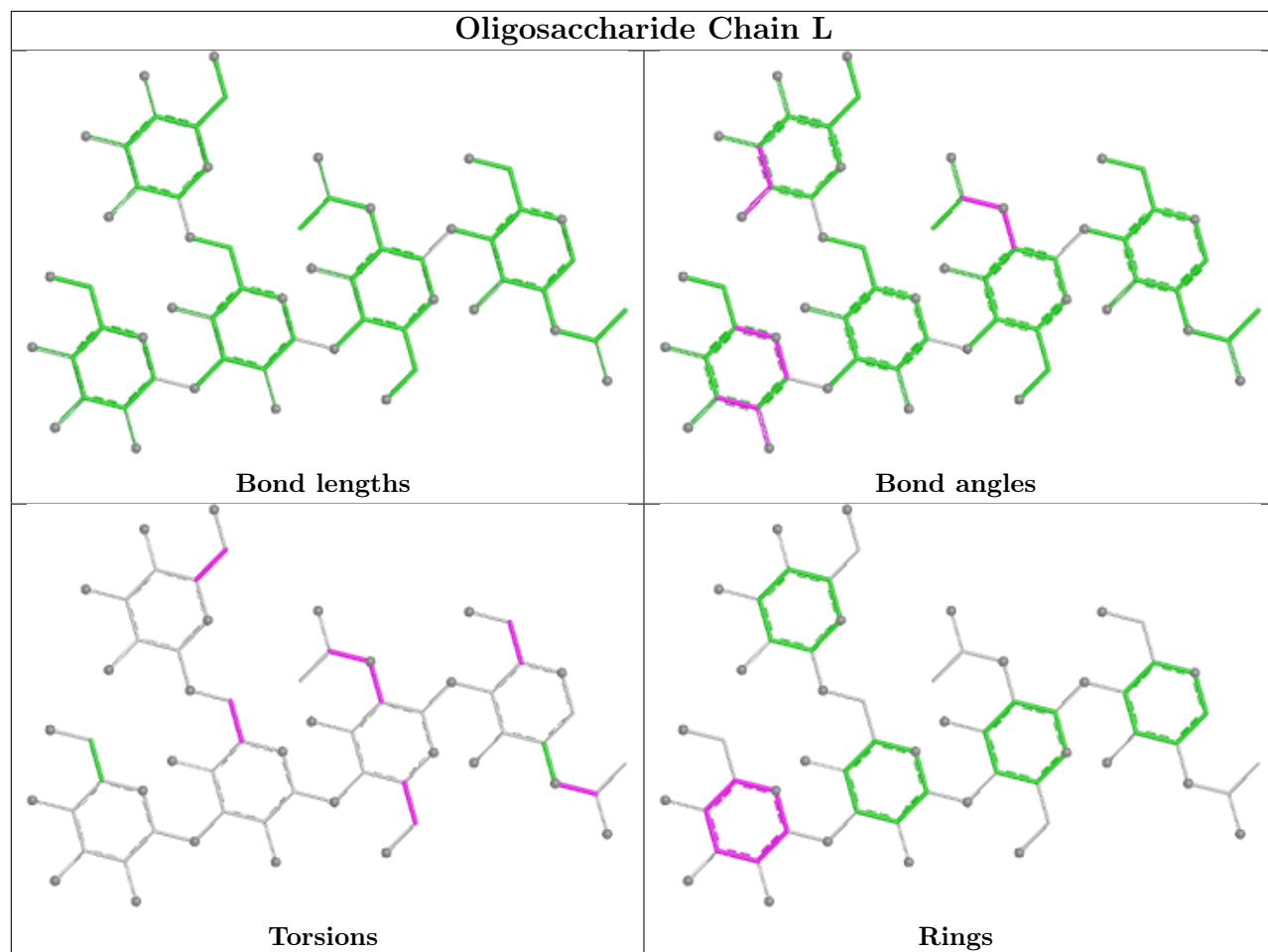
Mol	Chain	Res	Type	Clashes	Symm-Clashes
7	G	2	NAG	1	0
7	M	1	NAG	1	0
7	H	2	NAG	1	0
7	L	2	NAG	1	0
7	F	4	MAN	1	0
7	G	3	BMA	1	0
7	M	2	NAG	1	0

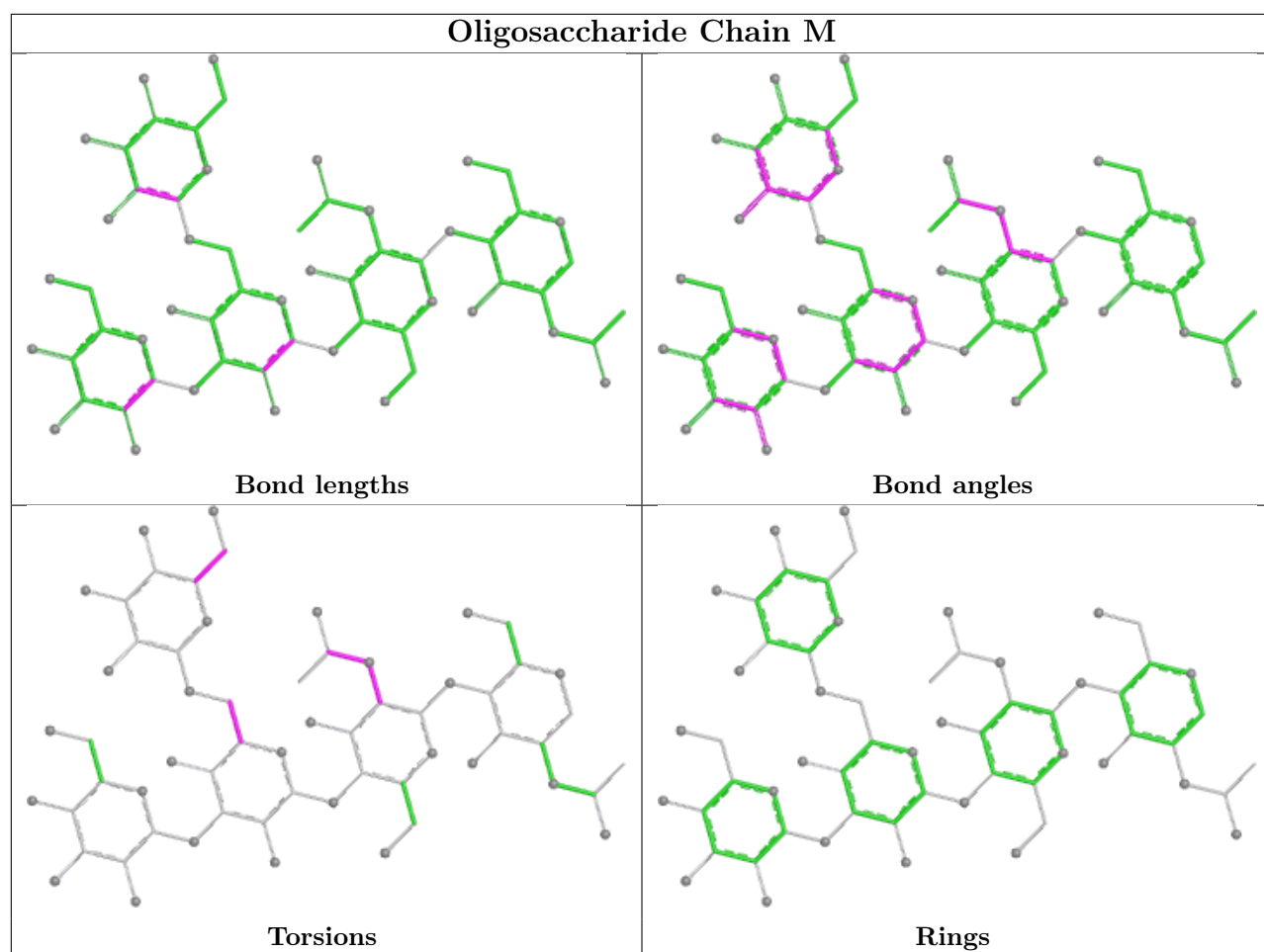
The following is a two-dimensional graphical depiction of Mogul quality analysis of bond lengths, bond angles, torsion angles, and ring geometry for oligosaccharide.

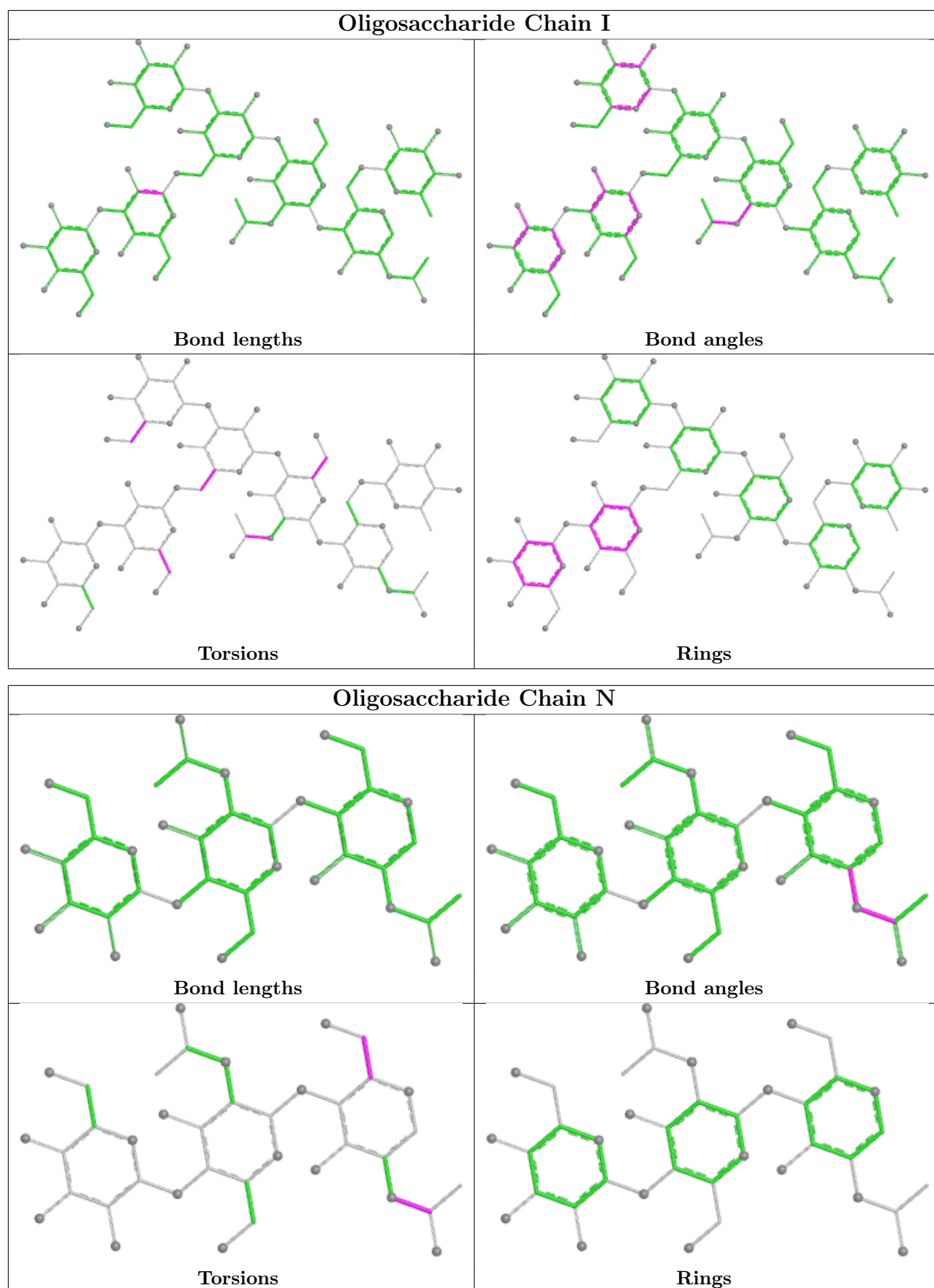












5.6 Ligand geometry

7 ligands are modelled in this entry.

In the following table, the Counts columns list the number of bonds (or angles) for which Mogul statistics could be retrieved, the number of bonds (or angles) that are observed in the model and the number of bonds (or angles) that are defined in the Chemical Component Dictionary. The Link column lists molecule types, if any, to which the group is linked. The Z score for a bond length (or angle) is the number of standard deviations the observed value is removed from the expected value. A bond length (or angle) with $|Z| > 2$ is considered an outlier worth inspection. RMSZ is the root-mean-square of all Z scores of the bond lengths (or angles).

Mol	Type	Chain	Res	Link	Bond lengths			Bond angles		
					Counts	RMSZ	# Z > 2	Counts	RMSZ	# Z > 2
12	R5R	C	602	-	22,25,25	2.56	5 (22%)	21,36,36	1.65	4 (19%)
14	Y4B	A	502	-	26,26,26	1.35	3 (11%)	42,42,42	2.38	19 (45%)
11	PIO	C	601	-	47,47,47	1.40	10 (21%)	62,65,65	1.24	7 (11%)
11	PIO	A	501	-	47,47,47	1.41	11 (23%)	62,65,65	1.30	9 (14%)
13	NAG	D	501	3	14,14,15	0.26	0	17,19,21	0.74	1 (5%)
10	ABU	E	501	-	6,6,6	0.87	0	6,6,6	1.29	0
10	ABU	B	501	-	6,6,6	0.92	0	6,6,6	1.33	1 (16%)

In the following table, the Chirals column lists the number of chiral outliers, the number of chiral centers analysed, the number of these observed in the model and the number defined in the Chemical Component Dictionary. Similar counts are reported in the Torsion and Rings columns. '-' means no outliers of that kind were identified.

Mol	Type	Chain	Res	Link	Chirals	Torsions	Rings
12	R5R	C	602	-	-	3/12/12/12	0/3/3/3
14	Y4B	A	502	-	-	4/4/62/62	0/4/4/4
11	PIO	C	601	-	-	17/44/68/68	0/1/1/1
11	PIO	A	501	-	-	11/44/68/68	0/1/1/1
13	NAG	D	501	3	-	2/6/23/26	0/1/1/1
10	ABU	E	501	-	-	3/4/4/4	-
10	ABU	B	501	-	-	2/4/4/4	-

All (29) bond length outliers are listed below:

Mol	Chain	Res	Type	Atoms	Z	Observed(Å)	Ideal(Å)
12	C	602	R5R	C19-N21	10.22	1.46	1.34
14	A	502	Y4B	C04-C05	3.69	1.60	1.53
12	C	602	R5R	C05-C08	3.29	1.52	1.49

Continued on next page...

Continued from previous page...

Mol	Chain	Res	Type	Atoms	Z	Observed(Å)	Ideal(Å)
11	A	501	PIO	P4-O4	3.26	1.65	1.59
11	C	601	PIO	P4-O4	3.26	1.65	1.59
11	C	601	PIO	P5-O5	3.22	1.65	1.59
11	A	501	PIO	P5-O5	3.22	1.65	1.59
14	A	502	Y4B	C07-C03	2.98	1.61	1.56
12	C	602	R5R	C18-C09	2.84	1.53	1.50
12	C	602	R5R	C15-N16	2.58	1.35	1.33
11	A	501	PIO	O3C-C1B	2.48	1.40	1.33
11	A	501	PIO	O2C-C2C	-2.45	1.40	1.46
11	C	601	PIO	O3C-C1B	2.38	1.40	1.33
14	A	502	Y4B	C17-C21	2.37	1.56	1.52
11	A	501	PIO	O2C-C1A	2.36	1.40	1.34
11	C	601	PIO	O2C-C1A	2.35	1.40	1.34
11	A	501	PIO	P4-O41	-2.30	1.46	1.54
11	A	501	PIO	P5-O51	-2.28	1.46	1.54
11	A	501	PIO	P4-O43	-2.26	1.46	1.54
11	C	601	PIO	P5-O51	-2.25	1.46	1.54
11	C	601	PIO	P4-O41	-2.25	1.46	1.54
11	C	601	PIO	P4-O43	-2.25	1.46	1.54
11	A	501	PIO	P5-O52	-2.24	1.46	1.54
11	C	601	PIO	P5-O52	-2.22	1.46	1.54
11	C	601	PIO	O2C-C2C	-2.13	1.41	1.46
11	C	601	PIO	O3C-C3C	-2.12	1.40	1.45
12	C	602	R5R	O20-C19	-2.06	1.18	1.23
11	A	501	PIO	O3C-C3C	-2.03	1.40	1.45
11	A	501	PIO	P1-O11	-2.02	1.46	1.55

All (41) bond angle outliers are listed below:

Mol	Chain	Res	Type	Atoms	Z	Observed(°)	Ideal(°)
12	C	602	R5R	C18-C19-N21	5.19	124.39	117.39
14	A	502	Y4B	C10-C06-C12	4.63	121.67	116.11
14	A	502	Y4B	C12-C06-C05	4.25	104.16	99.72
14	A	502	Y4B	C23-C22-C12	4.15	124.83	117.65
11	C	601	PIO	O2C-C1A-C2A	4.09	120.32	111.48
14	A	502	Y4B	O02-C22-C23	-4.06	114.00	121.17
14	A	502	Y4B	C08-C17-C21	3.96	118.67	112.71
11	A	501	PIO	O2C-C1A-C2A	3.89	119.90	111.48
14	A	502	Y4B	C13-C05-C06	-3.64	99.56	103.84
14	A	502	Y4B	C05-C04-C03	3.51	113.67	109.09
14	A	502	Y4B	C13-C05-C04	3.49	124.66	119.10
14	A	502	Y4B	C09-C03-C04	-3.40	107.03	111.78

Continued on next page...

Continued from previous page...

Mol	Chain	Res	Type	Atoms	Z	Observed(°)	Ideal(°)
14	A	502	Y4B	C18-C06-C10	-3.14	105.98	110.61
14	A	502	Y4B	C16-C12-C06	-3.03	101.50	104.21
14	A	502	Y4B	C11-C04-C03	-2.91	107.04	110.52
14	A	502	Y4B	C14-C08-C07	-2.85	107.53	112.31
11	A	501	PIO	O3C-C1B-C2B	2.85	120.52	111.83
12	C	602	R5R	O20-C19-C18	-2.76	117.22	121.61
11	C	601	PIO	O3C-C1B-C2B	2.67	119.98	111.83
14	A	502	Y4B	C15-C07-C03	2.65	115.46	111.34
11	C	601	PIO	O11-P1-O12	-2.57	100.51	112.44
11	A	501	PIO	O1-C1-C2	2.46	113.94	108.73
14	A	502	Y4B	C15-C20-C21	2.45	113.72	110.48
13	D	501	NAG	C2-N2-C7	2.42	126.15	122.90
11	A	501	PIO	O11-P1-O12	-2.41	101.23	112.44
14	A	502	Y4B	C14-C11-C04	2.36	115.93	112.16
14	A	502	Y4B	C06-C05-C04	-2.36	111.07	114.41
14	A	502	Y4B	C07-C03-C04	2.34	114.81	112.43
14	A	502	Y4B	C18-C06-C12	-2.30	106.53	110.35
10	B	501	ABU	OXT-C-CG	2.30	121.25	114.00
11	C	601	PIO	O52-P5-O5	2.23	114.56	105.85
12	C	602	R5R	O20-C19-N21	-2.21	118.39	121.89
11	A	501	PIO	O41-P4-O4	2.20	114.42	105.85
11	A	501	PIO	O51-P5-O5	2.13	114.15	105.85
11	A	501	PIO	O52-P5-O5	2.11	114.09	105.85
11	C	601	PIO	O43-P4-O4	2.10	114.02	105.85
11	C	601	PIO	O41-P4-O4	2.09	113.99	105.85
11	A	501	PIO	O43-P4-O4	2.09	113.99	105.85
11	C	601	PIO	O51-P5-O5	2.07	113.92	105.85
12	C	602	R5R	C11-C12-C13	2.03	119.85	116.83
11	A	501	PIO	C6-C1-C2	-2.02	108.05	110.86

There are no chirality outliers.

All (42) torsion outliers are listed below:

Mol	Chain	Res	Type	Atoms
10	B	501	ABU	CD-CB-CG-C
11	C	601	PIO	C1C-O13-P1-O1
11	C	601	PIO	C1C-O13-P1-O11
11	C	601	PIO	C1C-O13-P1-O12
11	C	601	PIO	C2A-C1A-O2C-C2C
11	A	501	PIO	C2-C1-O1-P1
12	C	602	R5R	C04-C05-C08-N16
12	C	602	R5R	C06-C05-C08-N16

Continued on next page...

Continued from previous page...

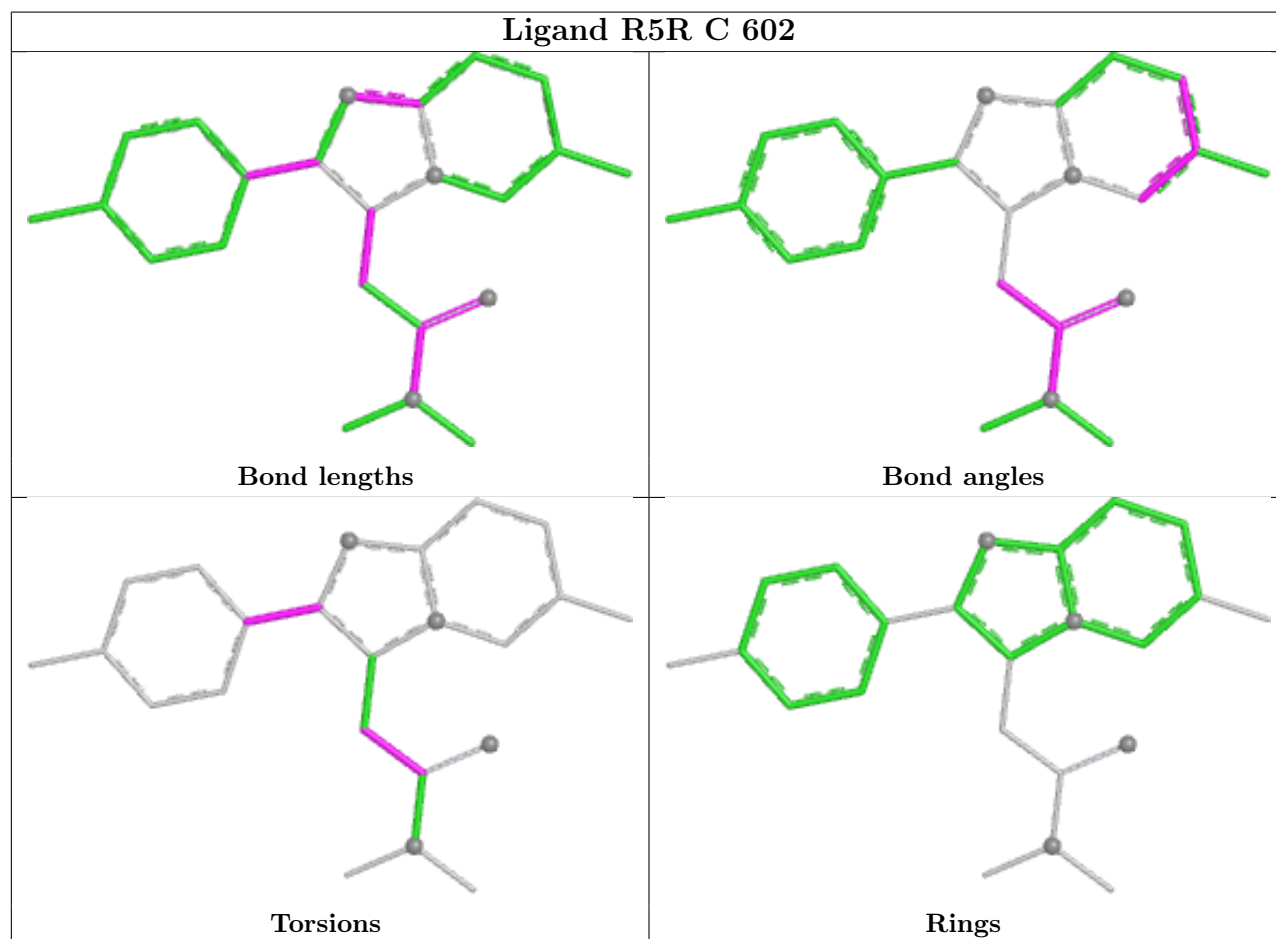
Mol	Chain	Res	Type	Atoms
11	C	601	PIO	O1B-C1B-O3C-C3C
11	C	601	PIO	O1A-C1A-O2C-C2C
11	C	601	PIO	C2B-C1B-O3C-C3C
13	D	501	NAG	C8-C7-N2-C2
13	D	501	NAG	O7-C7-N2-C2
10	E	501	ABU	CD-CB-CG-C
11	C	601	PIO	C1B-C2B-C3B-C4B
11	C	601	PIO	C3B-C4B-C5B-C6B
11	A	501	PIO	C3B-C4B-C5B-C6B
11	A	501	PIO	C4A-C5A-C6A-C7A
11	C	601	PIO	C4A-C5A-C6A-C7A
11	A	501	PIO	C2B-C1B-O3C-C3C
11	C	601	PIO	C1C-C2C-O2C-C1A
11	A	501	PIO	O1B-C1B-O3C-C3C
11	C	601	PIO	C1C-C2C-C3C-O3C
11	A	501	PIO	O2C-C2C-C3C-O3C
11	A	501	PIO	C4-O4-P4-O42
11	C	601	PIO	O2C-C2C-C3C-O3C
11	C	601	PIO	C5-O5-P5-O52
11	A	501	PIO	C5B-C6B-C7B-C8B
11	C	601	PIO	C5B-C6B-C7B-C8B
10	E	501	ABU	O-C-CG-CB
10	E	501	ABU	OXT-C-CG-CB
14	A	502	Y4B	C16-C12-C22-O02
11	A	501	PIO	C4B-C5B-C6B-C7B
14	A	502	Y4B	C06-C12-C22-C23
11	A	501	PIO	C3-C4-O4-P4
14	A	502	Y4B	C16-C12-C22-C23
11	A	501	PIO	C1C-C2C-C3C-O3C
11	C	601	PIO	C1-O1-P1-O11
14	A	502	Y4B	C06-C12-C22-O02
10	B	501	ABU	CG-CB-CD-N
12	C	602	R5R	C09-C18-C19-N21
11	C	601	PIO	C4-C5-O5-P5

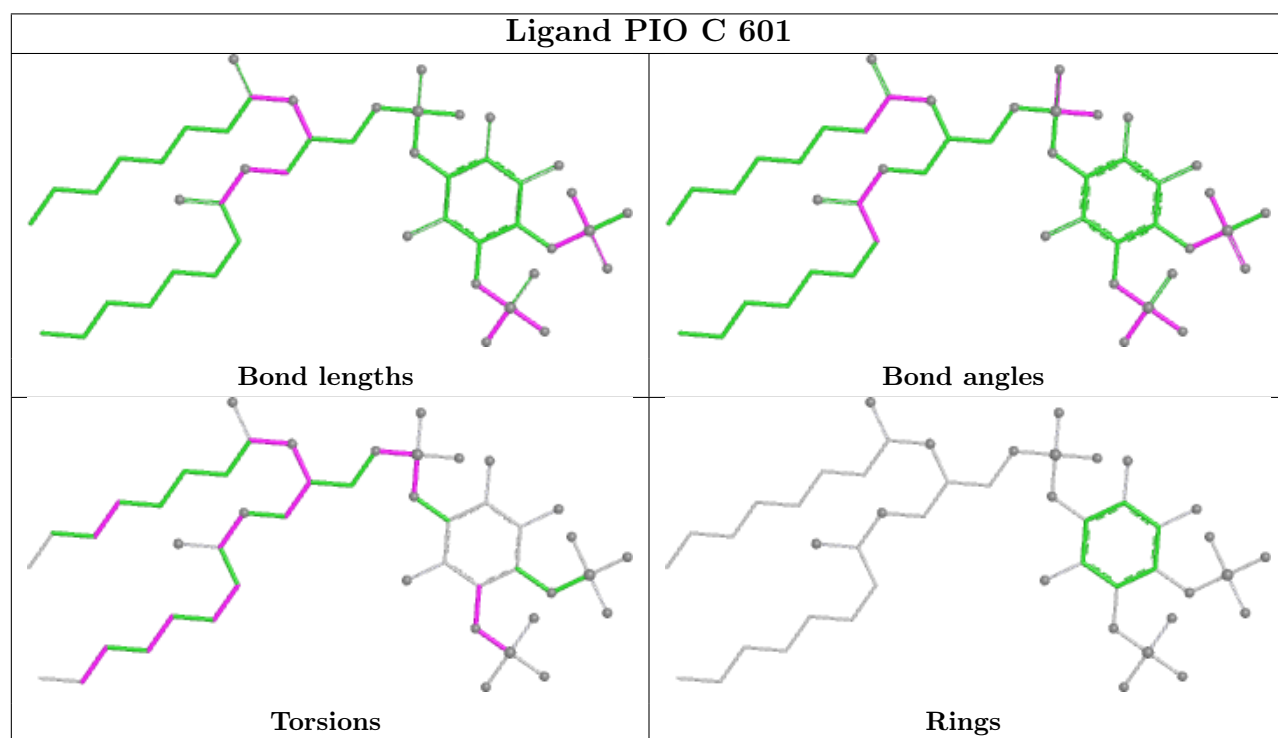
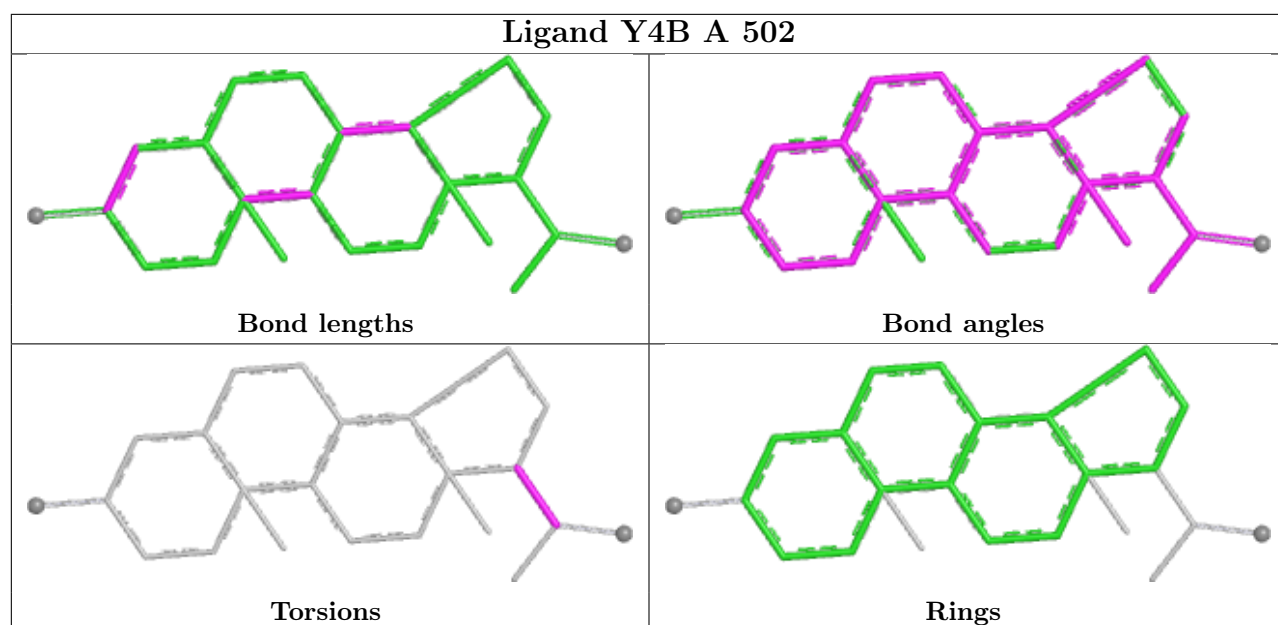
There are no ring outliers.

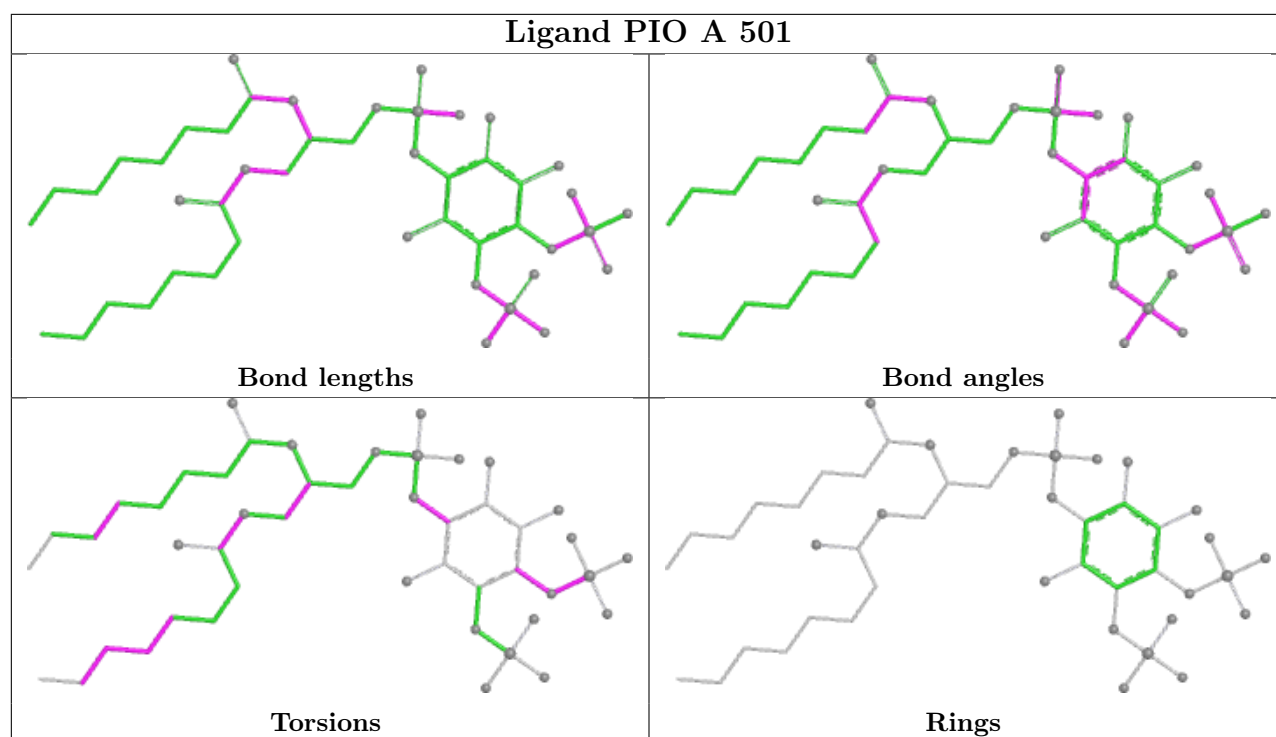
3 monomers are involved in 6 short contacts:

Mol	Chain	Res	Type	Clashes	Symm-Clashes
11	C	601	PIO	4	0
11	A	501	PIO	1	0
10	B	501	ABU	1	0

The following is a two-dimensional graphical depiction of Mogul quality analysis of bond lengths, bond angles, torsion angles, and ring geometry for all instances of the Ligand of Interest. In addition, ligands with molecular weight > 250 and outliers as shown on the validation Tables will also be included. For torsion angles, if less than 5% of the Mogul distribution of torsion angles is within 10 degrees of the torsion angle in question, then that torsion angle is considered an outlier. Any bond that is central to one or more torsion angles identified as an outlier by Mogul will be highlighted in the graph. For rings, the root-mean-square deviation (RMSD) between the ring in question and similar rings identified by Mogul is calculated over all ring torsion angles. If the average RMSD is greater than 60 degrees and the minimal RMSD between the ring in question and any Mogul-identified rings is also greater than 60 degrees, then that ring is considered an outlier. The outliers are highlighted in purple. The color gray indicates Mogul did not find sufficient equivalents in the CSD to analyse the geometry.







5.7 Other polymers [i](#)

There are no such residues in this entry.

5.8 Polymer linkage issues [i](#)

There are no chain breaks in this entry.

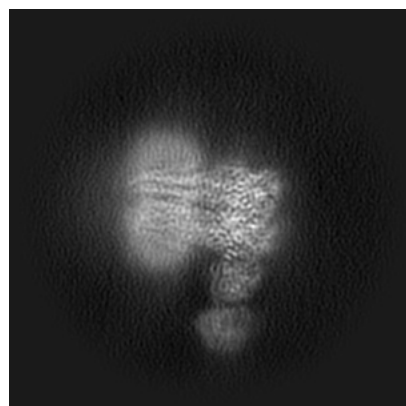
6 Map visualisation [i](#)

This section contains visualisations of the EMDB entry EMD-29743. These allow visual inspection of the internal detail of the map and identification of artifacts.

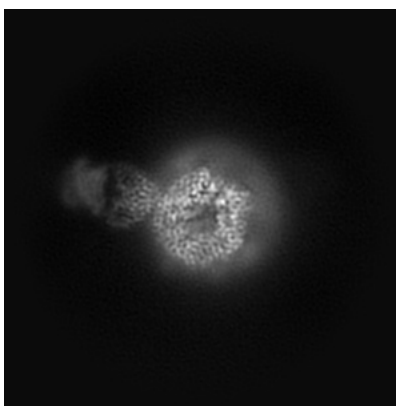
Images derived from a raw map, generated by summing the deposited half-maps, are presented below the corresponding image components of the primary map to allow further visual inspection and comparison with those of the primary map.

6.1 Orthogonal projections [i](#)

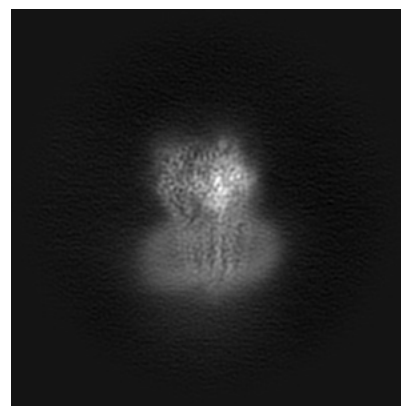
6.1.1 Primary map



X

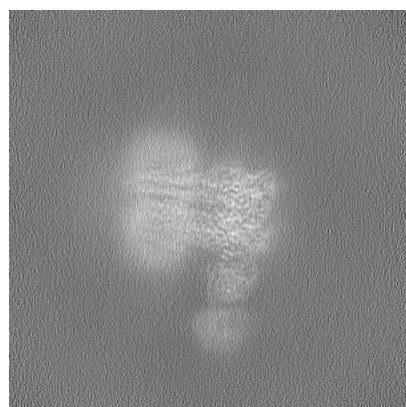


Y

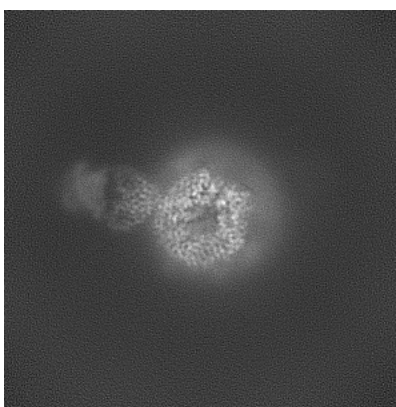


Z

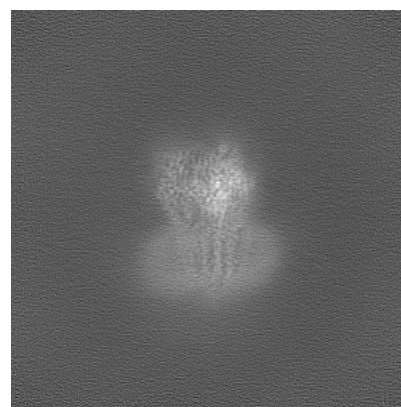
6.1.2 Raw map



X



Y

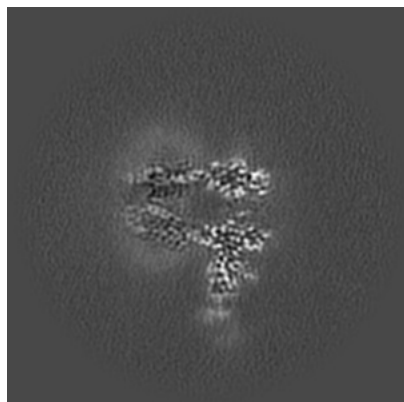


Z

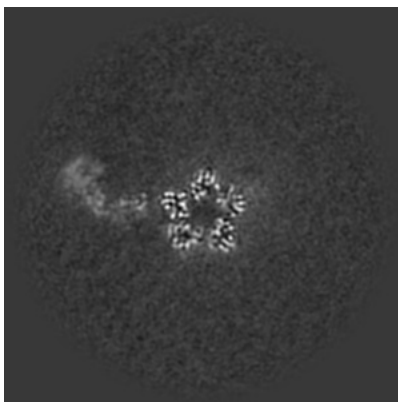
The images above show the map projected in three orthogonal directions.

6.2 Central slices [i](#)

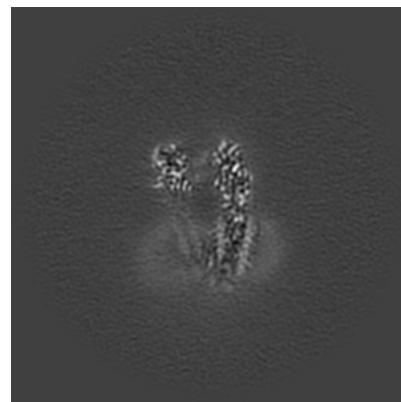
6.2.1 Primary map



X Index: 180

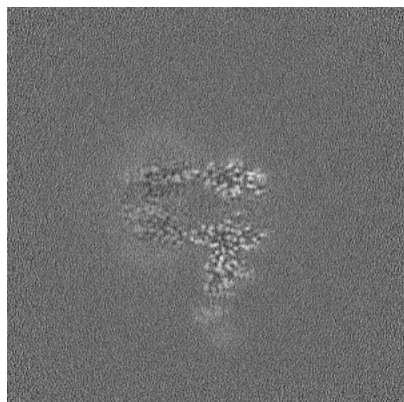


Y Index: 180

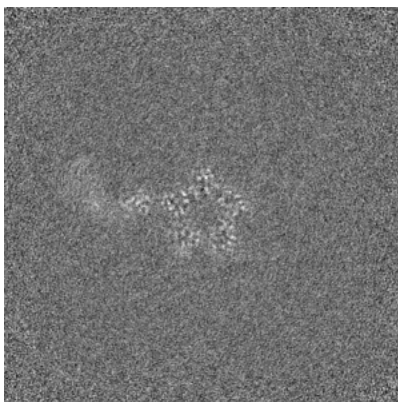


Z Index: 180

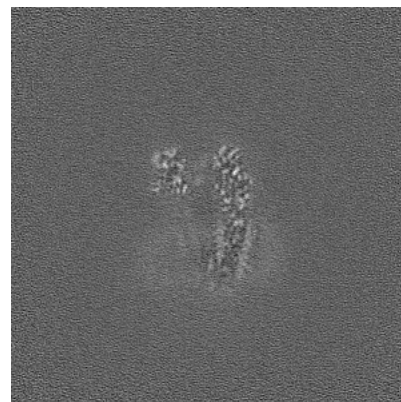
6.2.2 Raw map



X Index: 180



Y Index: 180

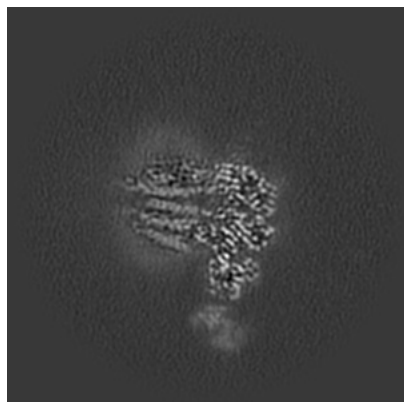


Z Index: 180

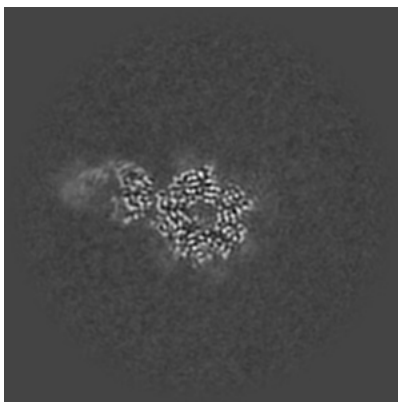
The images above show central slices of the map in three orthogonal directions.

6.3 Largest variance slices [i](#)

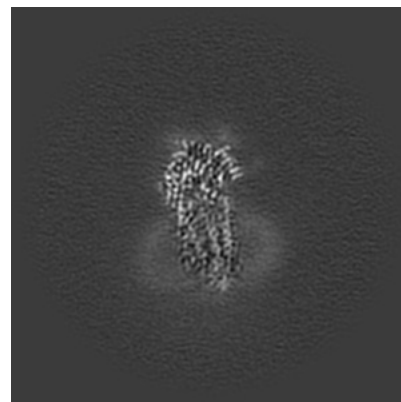
6.3.1 Primary map



X Index: 187

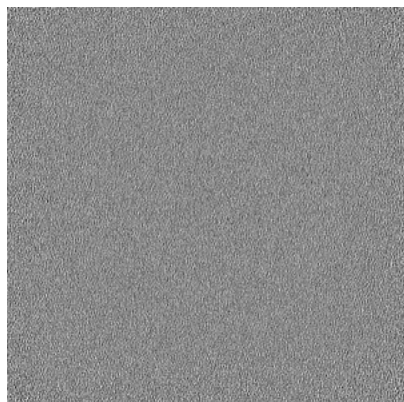


Y Index: 204

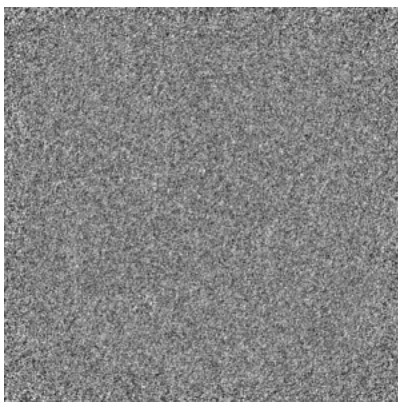


Z Index: 203

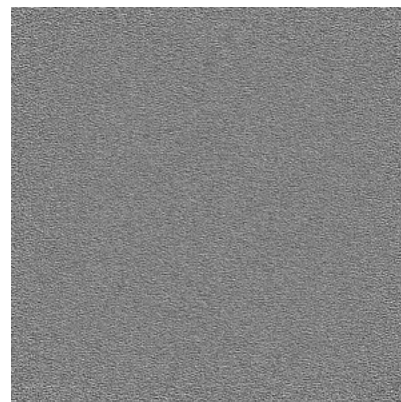
6.3.2 Raw map



X Index: 0



Y Index: 0

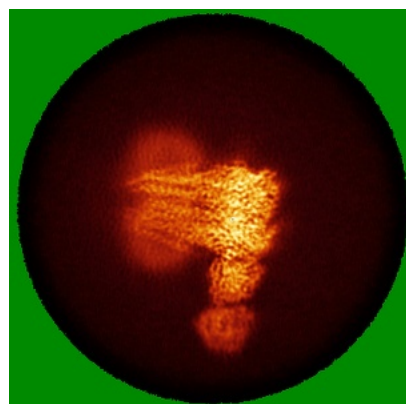


Z Index: 0

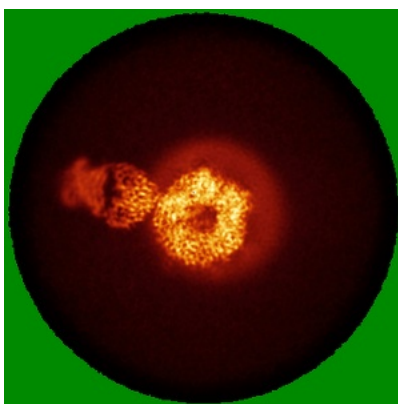
The images above show the largest variance slices of the map in three orthogonal directions.

6.4 Orthogonal standard-deviation projections (False-color) [i](#)

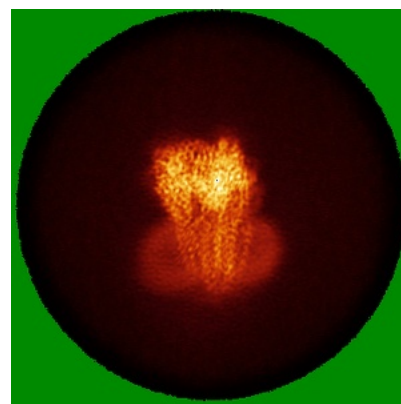
6.4.1 Primary map



X

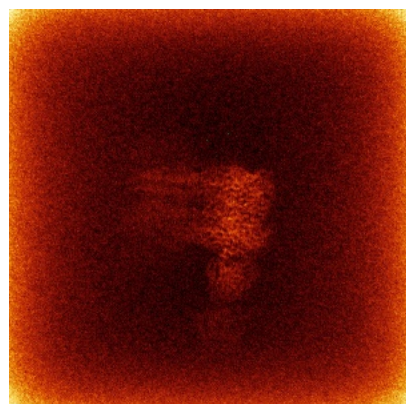


Y

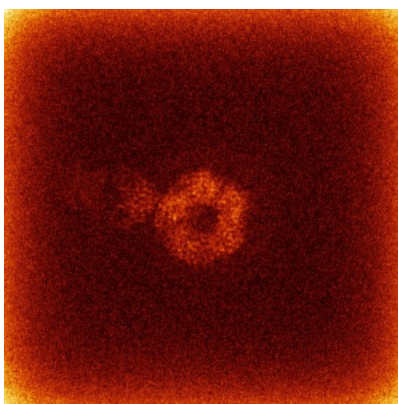


Z

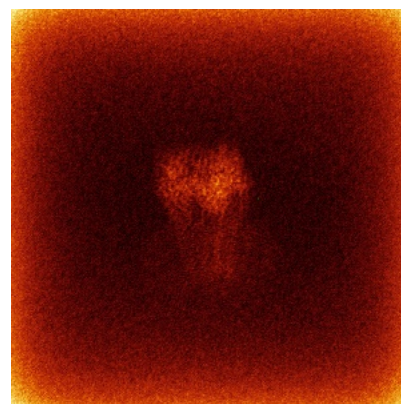
6.4.2 Raw map



X



Y



Z

The images above show the map standard deviation projections with false color in three orthogonal directions. Minimum values are shown in green, max in blue, and dark to light orange shades represent small to large values respectively.

6.5 Orthogonal surface views [i](#)

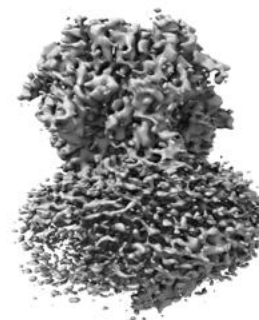
6.5.1 Primary map



X



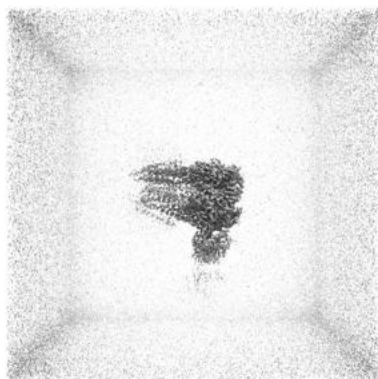
Y



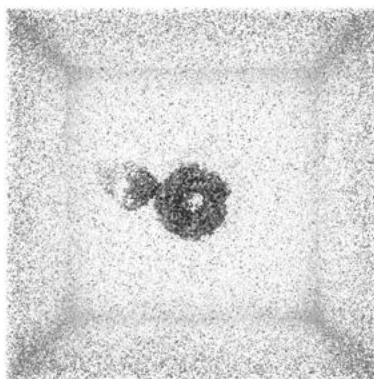
Z

The images above show the 3D surface view of the map at the recommended contour level 0.075. These images, in conjunction with the slice images, may facilitate assessment of whether an appropriate contour level has been provided.

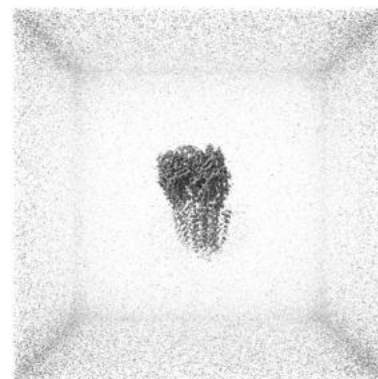
6.5.2 Raw map



X



Y



Z

These images show the 3D surface of the raw map. The raw map's contour level was selected so that its surface encloses the same volume as the primary map does at its recommended contour level.

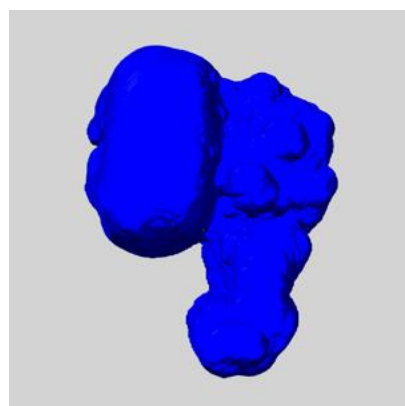
6.6 Mask visualisation [i](#)

This section shows the 3D surface view of the primary map at 50% transparency overlaid with the specified mask at 0% transparency

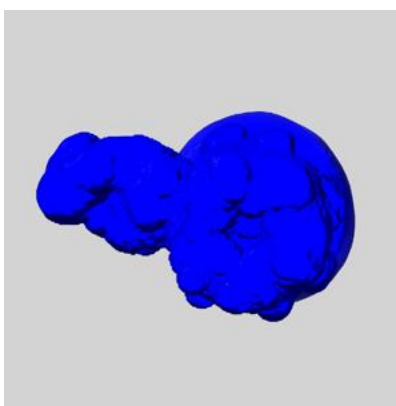
A mask typically either:

- Encompasses the whole structure
- Separates out a domain, a functional unit, a monomer or an area of interest from a larger structure

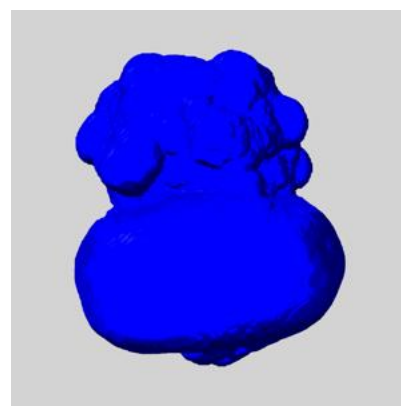
6.6.1 emd_29743_msk_1.map [i](#)



X



Y

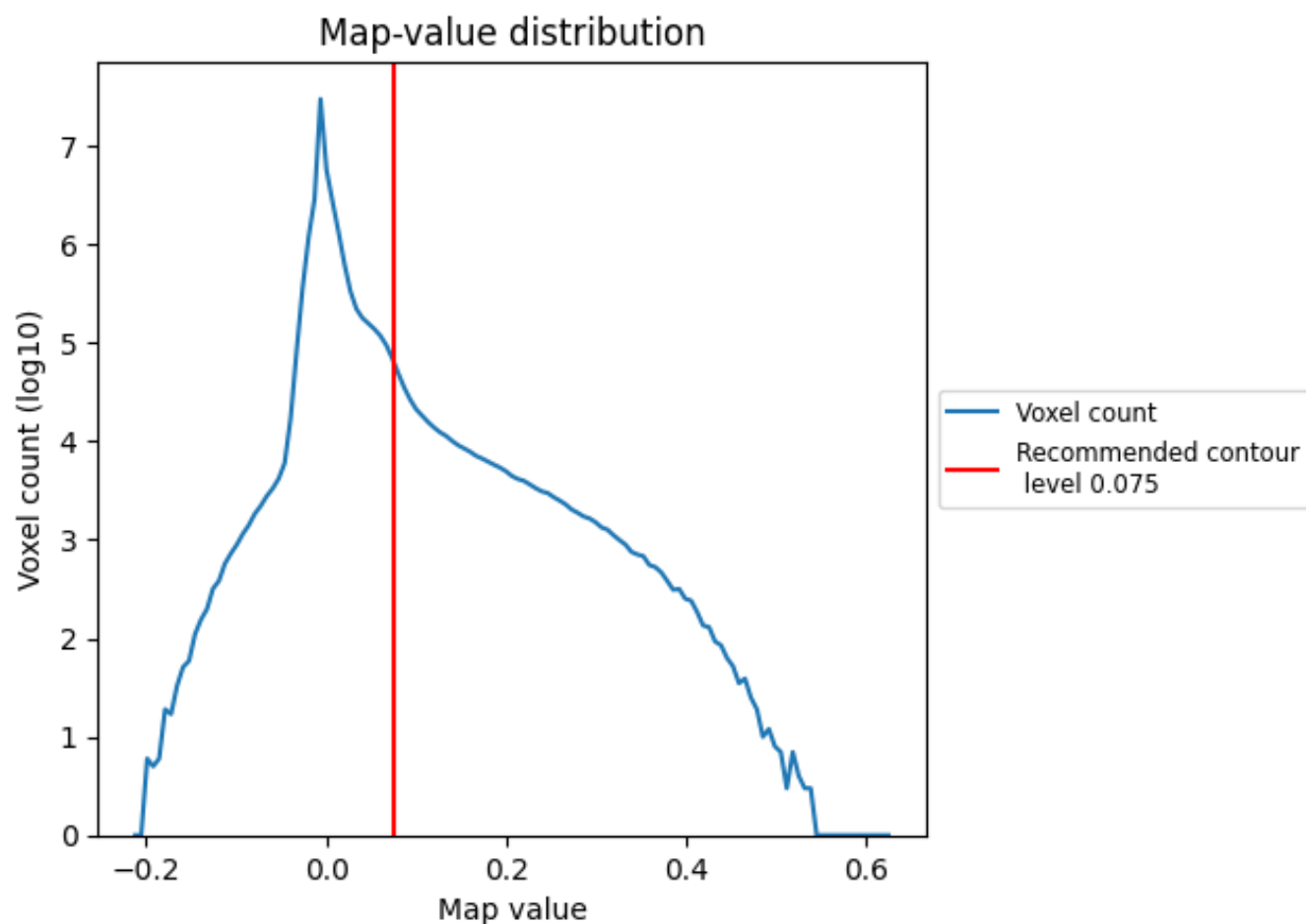


Z

7 Map analysis [i](#)

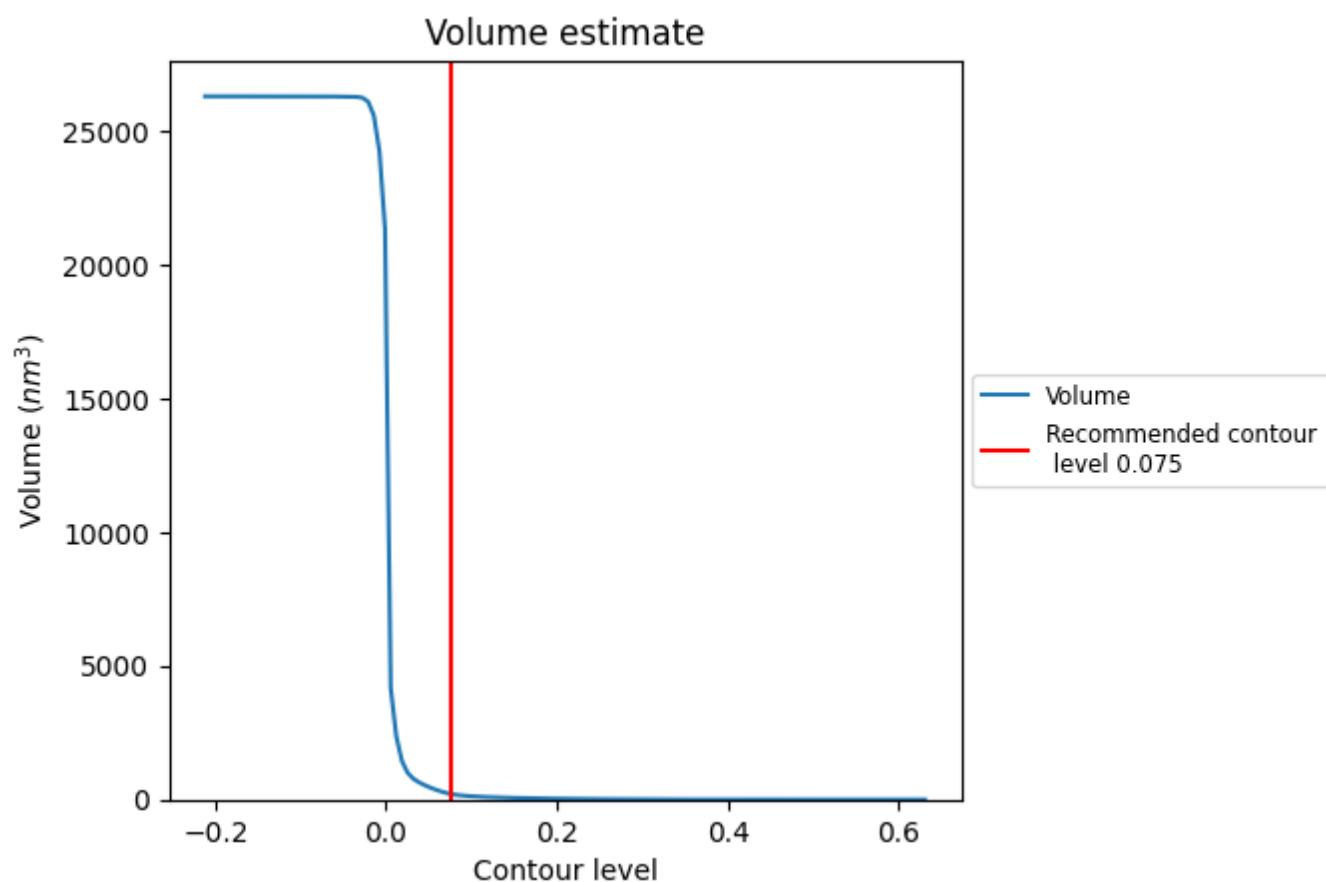
This section contains the results of statistical analysis of the map.

7.1 Map-value distribution [i](#)



The map-value distribution is plotted in 128 intervals along the x-axis. The y-axis is logarithmic. A spike in this graph at zero usually indicates that the volume has been masked.

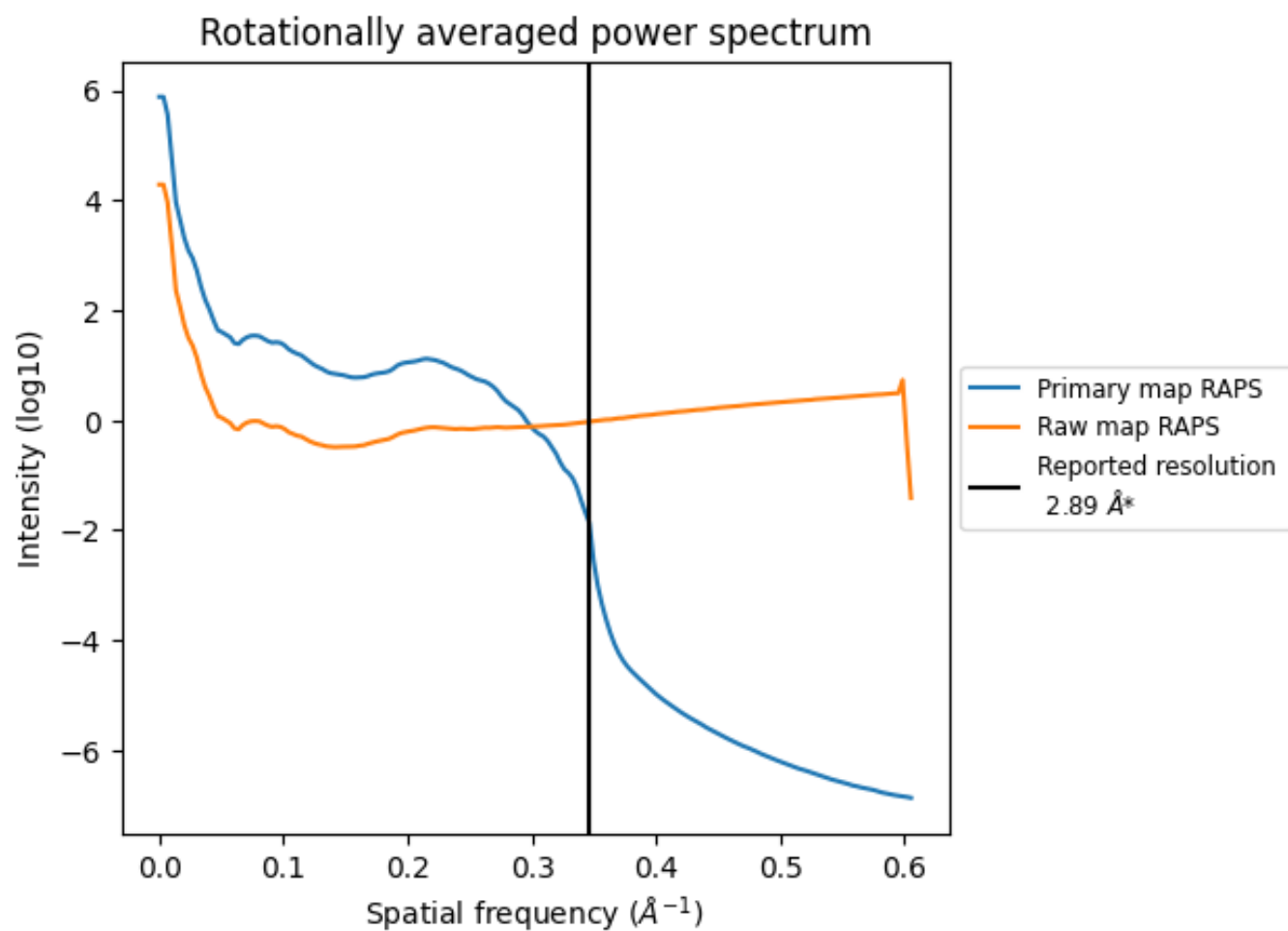
7.2 Volume estimate [i](#)



The volume at the recommended contour level is 217 nm³; this corresponds to an approximate mass of 196 kDa.

The volume estimate graph shows how the enclosed volume varies with the contour level. The recommended contour level is shown as a vertical line and the intersection between the line and the curve gives the volume of the enclosed surface at the given level.

7.3 Rotationally averaged power spectrum ⓘ

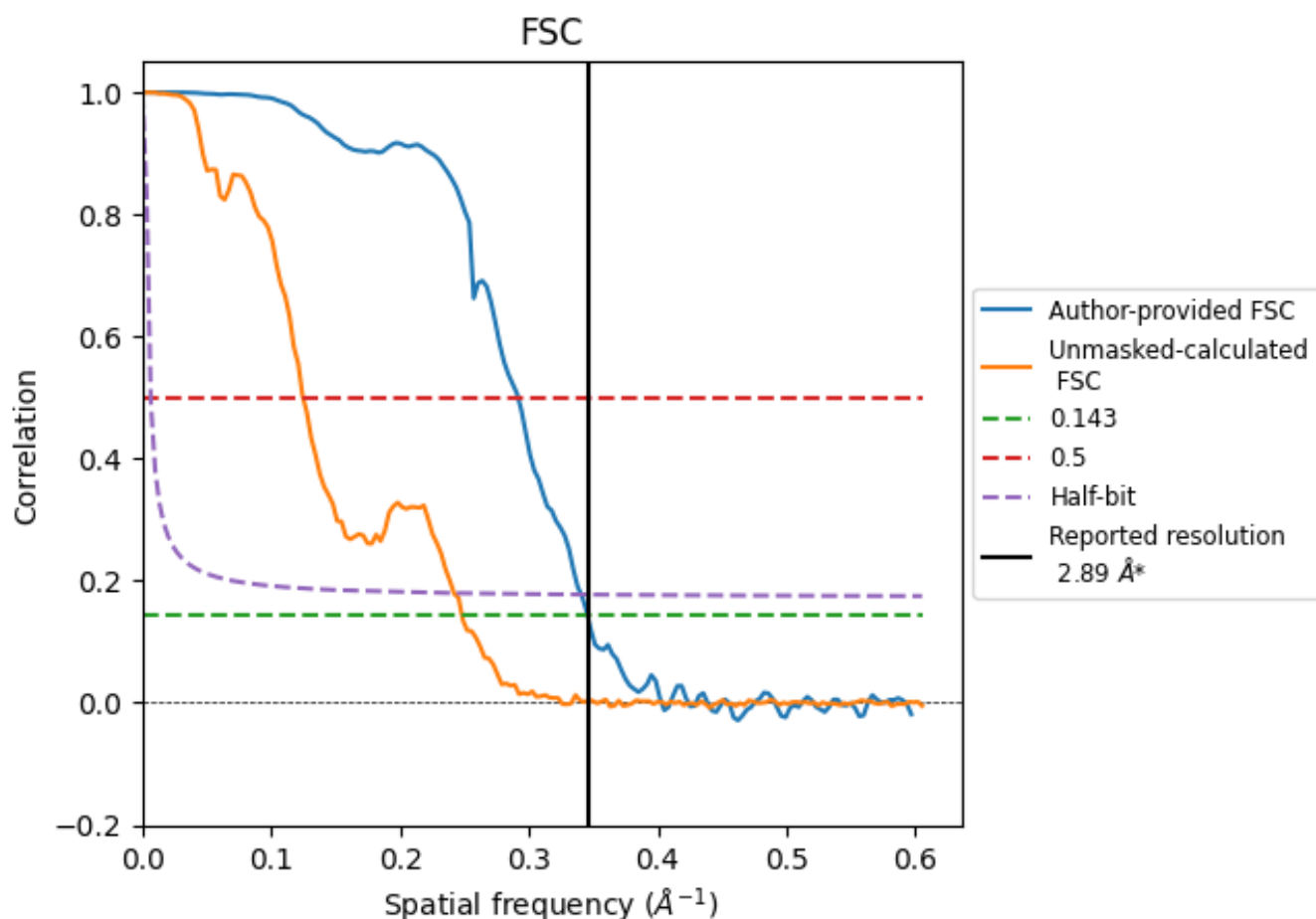


*Reported resolution corresponds to spatial frequency of 0.346 Å⁻¹

8 Fourier-Shell correlation [i](#)

Fourier-Shell Correlation (FSC) is the most commonly used method to estimate the resolution of single-particle and subtomogram-averaged maps. The shape of the curve depends on the imposed symmetry, mask and whether or not the two 3D reconstructions used were processed from a common reference. The reported resolution is shown as a black line. A curve is displayed for the half-bit criterion in addition to lines showing the 0.143 gold standard cut-off and 0.5 cut-off.

8.1 FSC [i](#)



*Reported resolution corresponds to spatial frequency of 0.346 \AA^{-1}

8.2 Resolution estimates [i](#)

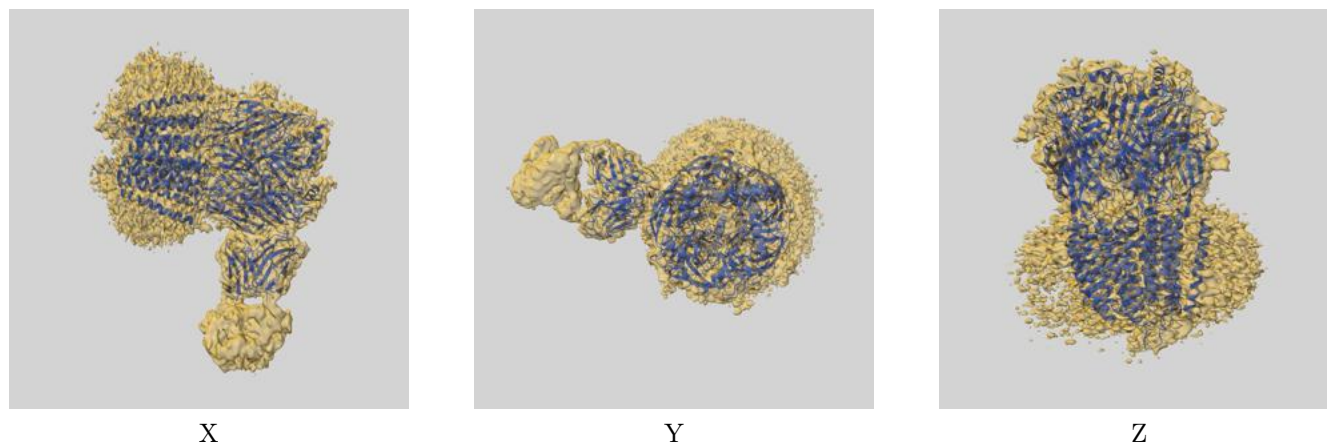
Resolution estimate (Å)	Estimation criterion (FSC cut-off)		
	0.143	0.5	Half-bit
Reported by author	2.89	-	-
Author-provided FSC curve	2.89	3.43	2.94
Unmasked-calculated*	4.03	8.01	4.13

*Resolution estimate based on FSC curve calculated by comparison of deposited half-maps. The value from deposited half-maps intersecting FSC 0.143 CUT-OFF 4.03 differs from the reported value 2.89 by more than 10 %

9 Map-model fit [i](#)

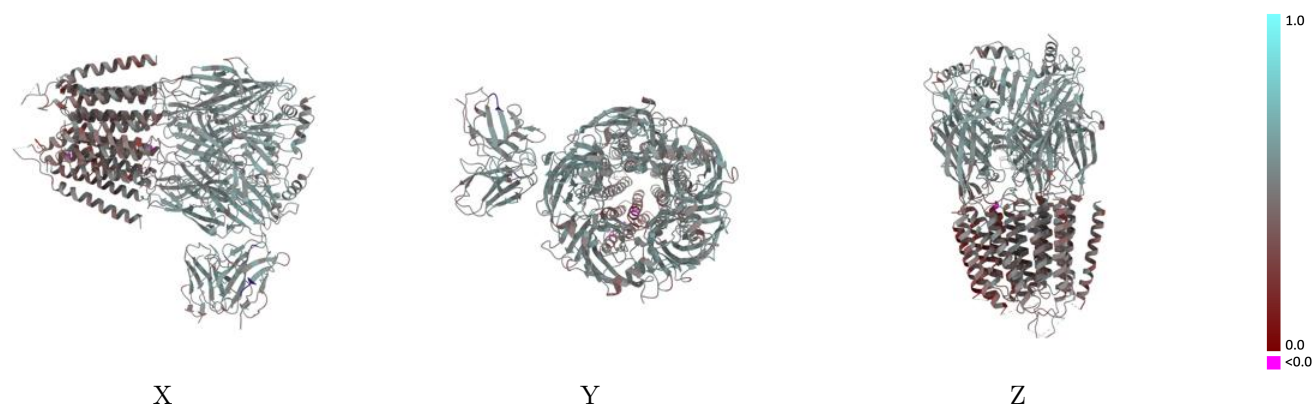
This section contains information regarding the fit between EMDB map EMD-29743 and PDB model 8G5H. Per-residue inclusion information can be found in section 3 on page 9.

9.1 Map-model overlay [i](#)



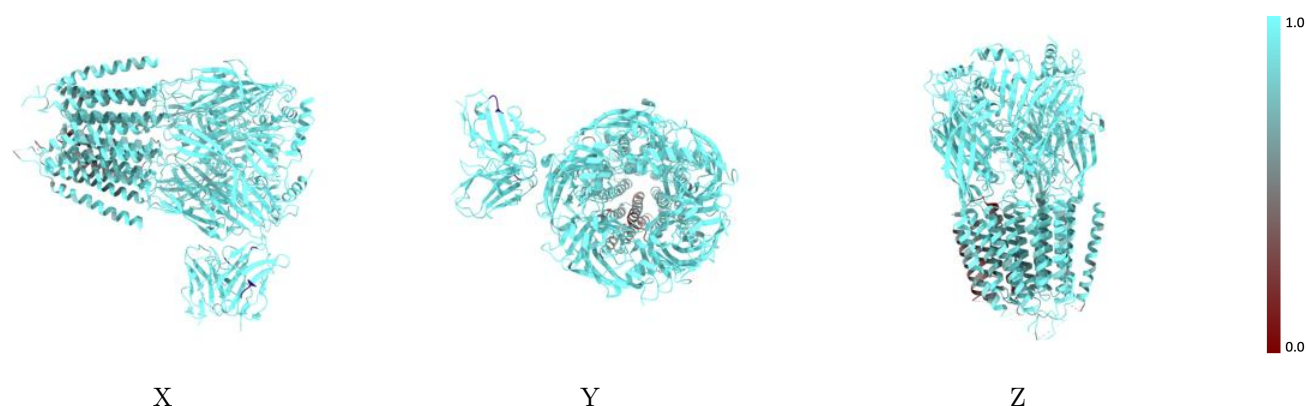
The images above show the 3D surface view of the map at the recommended contour level 0.075 at 50% transparency in yellow overlaid with a ribbon representation of the model coloured in blue. These images allow for the visual assessment of the quality of fit between the atomic model and the map.

9.2 Q-score mapped to coordinate model [i](#)



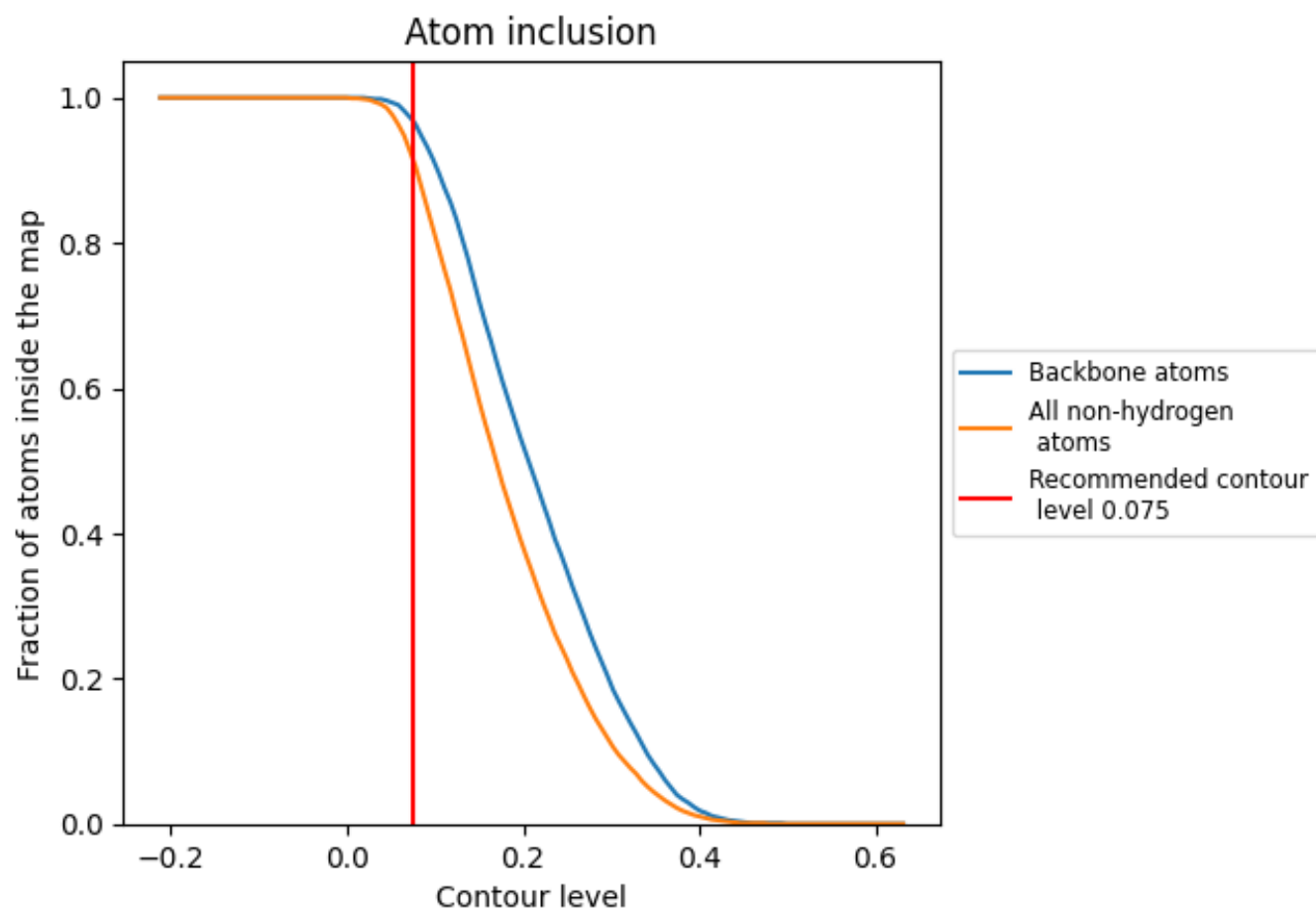
The images above show the model with each residue coloured according to its Q-score. This shows their resolvability in the map with higher Q-score values reflecting better resolvability. Please note: Q-score is calculating the resolvability of atoms, and thus high values are only expected at resolutions at which atoms can be resolved. Low Q-score values may therefore be expected for many entries.

9.3 Atom inclusion mapped to coordinate model [i](#)



The images above show the model with each residue coloured according to its atom inclusion. This shows to what extent they are inside the map at the recommended contour level (0.075).

9.4 Atom inclusion [i](#)



At the recommended contour level, 97% of all backbone atoms, 92% of all non-hydrogen atoms, are inside the map.

9.5 Map-model fit summary ⓘ

The table lists the average atom inclusion at the recommended contour level (0.075) and Q-score for the entire model and for each chain.

Chain	Atom inclusion	Q-score
All	<div></div> 0.9150	<div></div> 0.4770
A	<div></div> 0.9310	<div></div> 0.4820
B	<div></div> 0.9360	<div></div> 0.4900
C	<div></div> 0.9370	<div></div> 0.5000
D	<div></div> 0.8180	<div></div> 0.4130
E	<div></div> 0.9370	<div></div> 0.4870
F	<div></div> 0.8690	<div></div> 0.4700
G	<div></div> 0.5740	<div></div> 0.3700
H	<div></div> 0.8690	<div></div> 0.3870
I	<div></div> 0.9020	<div></div> 0.4610
J	<div></div> 0.9650	<div></div> 0.5050
K	<div></div> 0.9680	<div></div> 0.5170
L	<div></div> 0.6560	<div></div> 0.3530
M	<div></div> 0.8850	<div></div> 0.4120
N	<div></div> 0.5900	<div></div> 0.4470

