



# wwPDB X-ray Structure Validation Summary Report ⓘ

May 3, 2025 – 09:26 AM EDT

PDB ID : 4GXG / pdb\_00004gxg  
Title : Crystal structure of human GLTP bound with 12:0 monosulfatide (orthorhombic form; four subunits in asymmetric unit)  
Authors : Samygina, V.R.; Cabo-Bilbao, A.; Goni-de-Cerio, F.; Popov, A.N.; Malinina, L.  
Deposited on : 2012-09-04  
Resolution : 2.40 Å(reported)

This is a wwPDB X-ray Structure Validation Summary Report for a publicly released PDB entry.

We welcome your comments at [validation@mail.wwpdb.org](mailto:validation@mail.wwpdb.org)

A user guide is available at

<https://www.wwpdb.org/validation/2017/XrayValidationReportHelp>

with specific help available everywhere you see the ⓘ symbol.

The types of validation reports are described at

<http://www.wwpdb.org/validation/2017/FAQs#types>.

---

The following versions of software and data (see [references ⓘ](#)) were used in the production of this report:

MolProbity	:	4-5-2 with Phenix2.0rc1
Mogul	:	2022.3.0, CSD as543be (2022)
Xtriage (Phenix)	:	2.0rc1
EDS	:	3.0
buster-report	:	1.1.7 (2018)
Percentile statistics	:	20231227.v01 (using entries in the PDB archive December 27th 2023)
CCP4	:	9.0.006 (Gargrove)
Density-Fitness	:	1.0.12
Ideal geometry (proteins)	:	Engh & Huber (2001)
Ideal geometry (DNA, RNA)	:	Parkinson et al. (1996)
Validation Pipeline (wwPDB-VP)	:	2.43.1

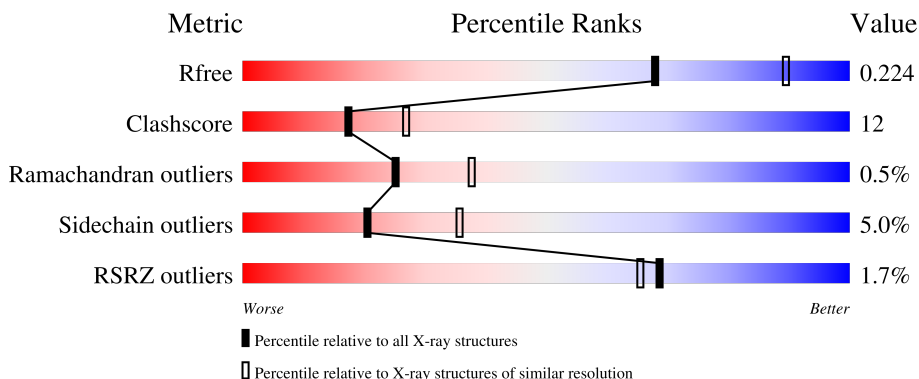
# 1 Overall quality at a glance

The following experimental techniques were used to determine the structure:

*X-RAY DIFFRACTION*

The reported resolution of this entry is 2.40 Å.

Percentile scores (ranging between 0-100) for global validation metrics of the entry are shown in the following graphic. The table shows the number of entries on which the scores are based.



Metric	Whole archive (#Entries)	Similar resolution (#Entries, resolution range(Å))
$R_{free}$	164625	4642 (2.40-2.40)
Clashscore	180529	5218 (2.40-2.40)
Ramachandran outliers	177936	5158 (2.40-2.40)
Sidechain outliers	177891	5159 (2.40-2.40)
RSRZ outliers	164620	4642 (2.40-2.40)

The table below summarises the geometric issues observed across the polymeric chains and their fit to the electron density. The red, orange, yellow and green segments of the lower bar indicate the fraction of residues that contain outliers for  $\geq 3$ , 2, 1 and 0 types of geometric quality criteria respectively. A grey segment represents the fraction of residues that are not modelled. The numeric value for each fraction is indicated below the corresponding segment, with a dot representing fractions  $\leq 5\%$ . The upper red bar (where present) indicates the fraction of residues that have poor fit to the electron density. The numeric value is given above the bar.

Mol	Chain	Length	Quality of chain
1	A	209	<div> <div style="width: 100%; height: 10px; background: linear-gradient(to right, red, orange, yellow, green);"></div> <div style="display: flex; justify-content: space-between; width: 100%;"> <span>79%</span> <span>16%</span> </div> </div>
1	B	209	<div> <div style="width: 100%; height: 10px; background: linear-gradient(to right, green, yellow, orange, red);"></div> <div style="display: flex; justify-content: space-between; width: 100%;"> <span>82%</span> <span>15%</span> </div> </div>
1	D	209	<div> <div style="width: 100%; height: 10px; background: linear-gradient(to right, red, orange, yellow, green);"></div> <div style="display: flex; justify-content: space-between; width: 100%;"> <span>76%</span> <span>21%</span> </div> </div>
1	E	209	<div> <div style="width: 100%; height: 10px; background: linear-gradient(to right, red, orange, yellow, green);"></div> <div style="display: flex; justify-content: space-between; width: 100%;"> <span>79%</span> <span>17%</span> </div> </div>

## 2 Entry composition [i](#)

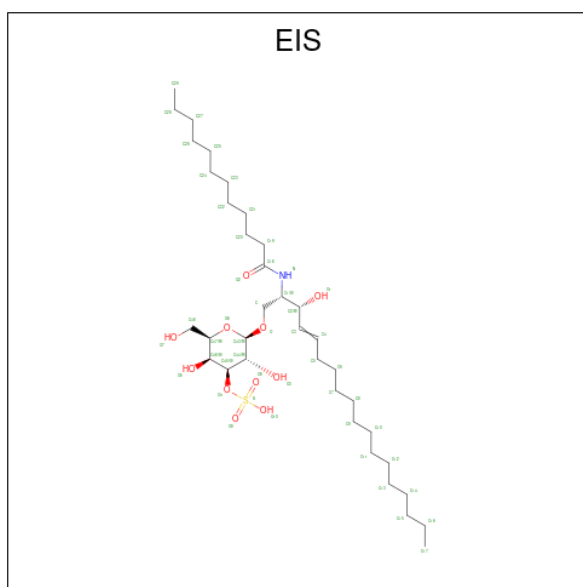
There are 3 unique types of molecules in this entry. The entry contains 7167 atoms, of which 0 are hydrogens and 0 are deuteriums.

In the tables below, the ZeroOcc column contains the number of atoms modelled with zero occupancy, the AltConf column contains the number of residues with at least one atom in alternate conformation and the Trace column contains the number of residues modelled with at most 2 atoms.

- Molecule 1 is a protein called Glycolipid transfer protein.

Mol	Chain	Residues	Atoms					ZeroOcc	AltConf	Trace
1	A	209	Total	C	N	O	S	0	3	0
			1693	1102	275	306	10			
1	B	207	Total	C	N	O	S	0	3	0
			1680	1094	273	304	9			
1	D	206	Total	C	N	O	S	0	3	0
			1672	1088	272	303	9			
1	E	208	Total	C	N	O	S	0	3	0
			1685	1097	274	305	9			

- Molecule 2 is N-[(2S,3R,4E)-3-hydroxy-1-[(3-O-sulfo-beta-D-galactopyranosyl)oxy]octadec-4-en-2-yl]dodecanamide (CCD ID: EIS) (formula: C<sub>36</sub>H<sub>69</sub>NO<sub>11</sub>S).



Mol	Chain	Residues	Atoms					ZeroOcc	AltConf
2	A	1	Total	C	N	O	S	0	0
			49	36	1	11	1		
2	B	1	Total	C	N	O	S	0	0
			49	36	1	11	1		

*Continued on next page...*

*Continued from previous page...*

Mol	Chain	Residues	Atoms					ZeroOcc	AltConf
2	D	1	Total	C	N	O	S	0	0
			49	36	1	11	1		
2	E	1	Total	C	N	O	S	0	0
			45	32	1	11	1		

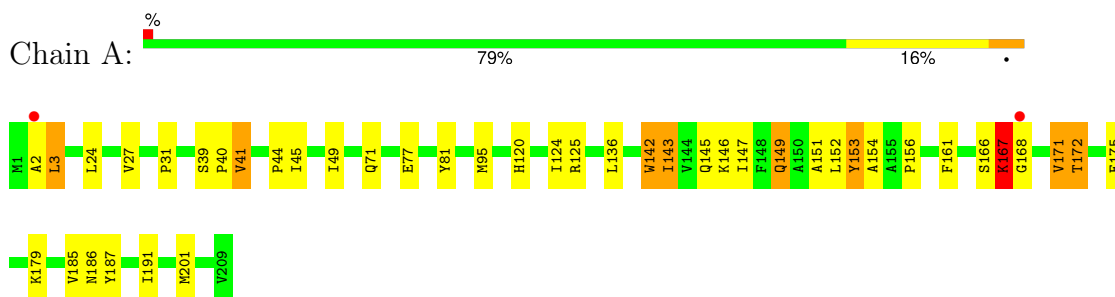
- Molecule 3 is water.

Mol	Chain	Residues	Atoms		ZeroOcc	AltConf
3	A	82	Total	O	0	0
			82	82		
3	B	54	Total	O	0	0
			54	54		
3	D	45	Total	O	0	0
			45	45		
3	E	64	Total	O	0	0
			64	64		

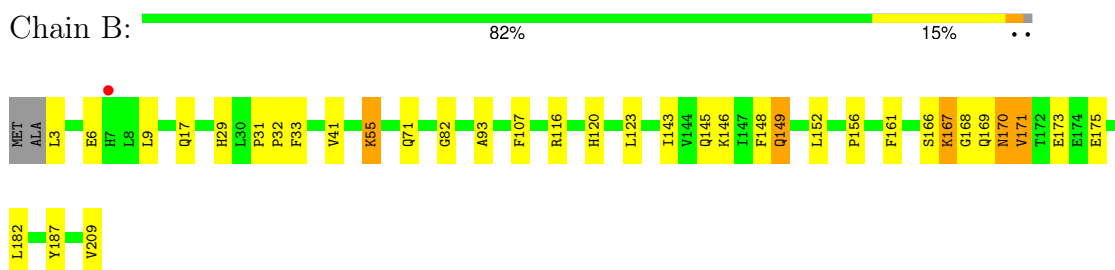
### 3 Residue-property plots [i](#)

These plots are drawn for all protein, RNA, DNA and oligosaccharide chains in the entry. The first graphic for a chain summarises the proportions of the various outlier classes displayed in the second graphic. The second graphic shows the sequence view annotated by issues in geometry and electron density. Residues are color-coded according to the number of geometric quality criteria for which they contain at least one outlier: green = 0, yellow = 1, orange = 2 and red = 3 or more. A red dot above a residue indicates a poor fit to the electron density ( $RSRZ > 2$ ). Stretches of 2 or more consecutive residues without any outlier are shown as a green connector. Residues present in the sample, but not in the model, are shown in grey.

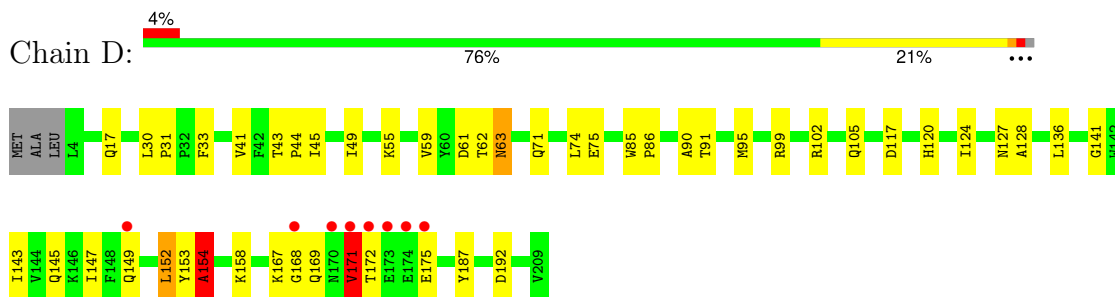
- Molecule 1: Glycolipid transfer protein



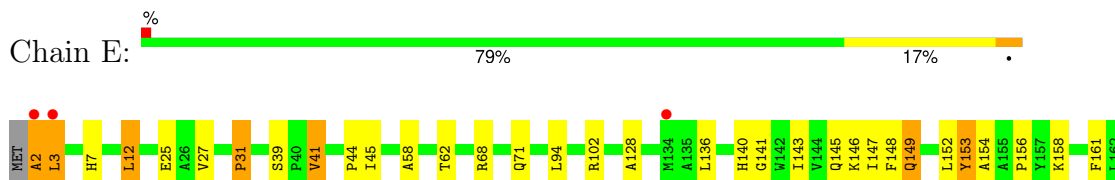
- Molecule 1: Glycolipid transfer protein



- Molecule 1: Glycolipid transfer protein



- Molecule 1: Glycolipid transfer protein



K163	
M170	
V171	
T172	
E173	
E174	
E175	
E178	
D192	
V193	
Y198	
V209	

## 4 Data and refinement statistics

Property	Value	Source
Space group	P 21 21 21	Depositor
Cell constants a, b, c, $\alpha$ , $\beta$ , $\gamma$	65.20Å 84.65Å 171.88Å 90.00° 90.00° 90.00°	Depositor
Resolution (Å)	14.98 – 2.40 14.98 – 2.40	Depositor EDS
% Data completeness (in resolution range)	97.8 (14.98-2.40) 97.3 (14.98-2.40)	Depositor EDS
$R_{merge}$	(Not available)	Depositor
$R_{sym}$	(Not available)	Depositor
$\langle I/\sigma(I) \rangle$ <sup>1</sup>	1.70 (at 2.39Å)	Xtriage
Refinement program	REFMAC 5.2.0019	Depositor
R, $R_{free}$	0.207 , 0.271 0.210 , 0.224	Depositor DCC
$R_{free}$ test set	1884 reflections (4.97%)	wwPDB-VP
Wilson B-factor (Å <sup>2</sup> )	34.6	Xtriage
Anisotropy	0.030	Xtriage
Bulk solvent $k_{sol}$ (e/Å <sup>3</sup> ), $B_{sol}$ (Å <sup>2</sup> )	0.36 , 30.6	EDS
L-test for twinning <sup>2</sup>	$\langle  L  \rangle = 0.48$ , $\langle L^2 \rangle = 0.31$	Xtriage
Estimated twinning fraction	No twinning to report.	Xtriage
$F_o, F_c$ correlation	0.93	EDS
Total number of atoms	7167	wwPDB-VP
Average B, all atoms (Å <sup>2</sup> )	34.0	wwPDB-VP

Xtriage's analysis on translational NCS is as follows: *The largest off-origin peak in the Patterson function is 10.07% of the height of the origin peak. No significant pseudotranslation is detected.*

<sup>1</sup>Intensities estimated from amplitudes.

<sup>2</sup>Theoretical values of  $\langle |L| \rangle$ ,  $\langle L^2 \rangle$  for acentric reflections are 0.5, 0.333 respectively for untwinned datasets, and 0.375, 0.2 for perfectly twinned datasets.

## 5 Model quality [i](#)

### 5.1 Standard geometry [i](#)

Bond lengths and bond angles in the following residue types are not validated in this section: EIS

The Z score for a bond length (or angle) is the number of standard deviations the observed value is removed from the expected value. A bond length (or angle) with  $|Z| > 5$  is considered an outlier worth inspection. RMSZ is the root-mean-square of all Z scores of the bond lengths (or angles).

Mol	Chain	Bond lengths		Bond angles	
		RMSZ	$\# Z  > 5$	RMSZ	$\# Z  > 5$
1	A	0.81	0/1747	1.07	3/2365 (0.1%)
1	B	0.75	0/1734	1.08	1/2348 (0.0%)
1	D	0.70	0/1726	0.98	1/2337 (0.0%)
1	E	0.76	0/1739	1.05	4/2355 (0.2%)
All	All	0.76	0/6946	1.05	9/9405 (0.1%)

Chiral center outliers are detected by calculating the chiral volume of a chiral center and verifying if the center is modelled as a planar moiety or with the opposite hand. A planarity outlier is detected by checking planarity of atoms in a peptide group, atoms in a mainchain group or atoms of a sidechain that are expected to be planar.

Mol	Chain	#Chirality outliers	#Planarity outliers
1	D	0	4
1	E	0	1
All	All	0	5

There are no bond length outliers.

The worst 5 of 9 bond angle outliers are listed below:

Mol	Chain	Res	Type	Atoms	Z	Observed(°)	Ideal(°)
1	A	153	TYR	N-CA-C	-7.17	101.06	110.53
1	B	31	PRO	N-CA-C	6.33	118.42	110.70
1	D	31	PRO	N-CA-C	6.00	118.02	110.70
1	E	31	PRO	N-CA-C	5.96	117.97	110.70
1	A	31	PRO	N-CA-C	5.93	117.94	110.70

There are no chirality outliers.

All (5) planarity outliers are listed below:



Mol	Chain	Res	Type	Group
1	D	154	ALA	Peptide
1	D	167	LYS	Peptide
1	D	168	GLY	Peptide
1	D	171	VAL	Peptide
1	E	2	ALA	Peptide

## 5.2 Too-close contacts

In the following table, the Non-H and H(model) columns list the number of non-hydrogen atoms and hydrogen atoms in the chain respectively. The H(added) column lists the number of hydrogen atoms added and optimized by MolProbity. The Clashes column lists the number of clashes within the asymmetric unit, whereas Symm-Clashes lists symmetry-related clashes.

Mol	Chain	Non-H	H(model)	H(added)	Clashes	Symm-Clashes
1	A	1693	0	1721	45	0
1	B	1680	0	1704	26	0
1	D	1672	0	1693	61	0
1	E	1685	0	1709	36	0
2	A	49	0	67	5	0
2	B	49	0	67	5	0
2	D	49	0	67	15	0
2	E	45	0	56	16	0
3	A	82	0	0	5	0
3	B	54	0	0	4	0
3	D	45	0	0	0	0
3	E	64	0	0	3	0
All	All	7167	0	7084	173	0

The all-atom clashscore is defined as the number of clashes found per 1000 atoms (including hydrogen atoms). The all-atom clashscore for this structure is 12.

The worst 5 of 173 close contacts within the same asymmetric unit are listed below, sorted by their clash magnitude.

Atom-1	Atom-2	Interatomic distance (Å)	Clash overlap (Å)
1:D:171:VAL:HG22	1:D:172:THR:HG23	1.20	1.11
1:A:154:ALA:HB2	1:B:143:ILE:HD13	1.45	0.98
2:D:700:EIS:H43	1:E:148:PHE:CE1	2.00	0.97
1:E:136:LEU:CD1	2:E:700:EIS:H59	1.94	0.97
1:B:166:SER:O	1:B:167:LYS:HG3	1.64	0.96

There are no symmetry-related clashes.

## 5.3 Torsion angles [i](#)

### 5.3.1 Protein backbone [i](#)

In the following table, the Percentiles column shows the percent Ramachandran outliers of the chain as a percentile score with respect to all X-ray entries followed by that with respect to entries of similar resolution.

The Analysed column shows the number of residues for which the backbone conformation was analysed, and the total number of residues.

Mol	Chain	Analysed	Favoured	Allowed	Outliers	Percentiles	
1	A	210/209 (100%)	202 (96%)	7 (3%)	1 (0%)	25	38
1	B	208/209 (100%)	197 (95%)	10 (5%)	1 (0%)	25	38
1	D	207/209 (99%)	193 (93%)	12 (6%)	2 (1%)	13	20
1	E	209/209 (100%)	198 (95%)	11 (5%)	0	100	100
All	All	834/836 (100%)	790 (95%)	40 (5%)	4 (0%)	25	38

All (4) Ramachandran outliers are listed below:

Mol	Chain	Res	Type
1	A	167	LYS
1	D	63	ASN
1	D	154	ALA
1	B	82	GLY

### 5.3.2 Protein sidechains [i](#)

In the following table, the Percentiles column shows the percent sidechain outliers of the chain as a percentile score with respect to all X-ray entries followed by that with respect to entries of similar resolution.

The Analysed column shows the number of residues for which the sidechain conformation was analysed, and the total number of residues.

Mol	Chain	Analysed	Rotameric	Outliers	Percentiles	
1	A	183/180 (102%)	172 (94%)	11 (6%)	16	27
1	B	182/180 (101%)	171 (94%)	11 (6%)	16	27
1	D	181/180 (101%)	175 (97%)	6 (3%)	33	53
1	E	182/180 (101%)	171 (94%)	11 (6%)	16	27
All	All	728/720 (101%)	689 (95%)	39 (5%)	20	32

5 of 39 residues with a non-rotameric sidechain are listed below:

Mol	Chain	Res	Type
1	E	3	LEU
1	E	158	LYS
1	E	12	LEU
1	E	71	GLN
1	E	171	VAL

Sometimes sidechains can be flipped to improve hydrogen bonding and reduce clashes. 5 of 19 such sidechains are listed below:

Mol	Chain	Res	Type
1	E	52	ASN
1	E	169	GLN
1	E	170	ASN
1	E	127	ASN
1	D	17	GLN

### 5.3.3 RNA [i](#)

There are no RNA molecules in this entry.

## 5.4 Non-standard residues in protein, DNA, RNA chains [i](#)

There are no non-standard protein/DNA/RNA residues in this entry.

## 5.5 Carbohydrates [i](#)

There are no oligosaccharides in this entry.

## 5.6 Ligand geometry [i](#)

4 ligands are modelled in this entry.

In the following table, the Counts columns list the number of bonds (or angles) for which Mogul statistics could be retrieved, the number of bonds (or angles) that are observed in the model and the number of bonds (or angles) that are defined in the Chemical Component Dictionary. The Link column lists molecule types, if any, to which the group is linked. The Z score for a bond length (or angle) is the number of standard deviations the observed value is removed from the expected value. A bond length (or angle) with  $|Z| > 2$  is considered an outlier worth inspection. RMSZ is the root-mean-square of all Z scores of the bond lengths (or angles).

Mol	Type	Chain	Res	Link	Bond lengths			Bond angles		
					Counts	RMSZ	# Z  > 2	Counts	RMSZ	# Z  > 2
2	EIS	A	700	-	48,49,49	2.16	6 (12%)	56,60,60	2.67	8 (14%)
2	EIS	E	700	-	44,45,49	2.26	6 (13%)	52,56,60	2.48	9 (17%)
2	EIS	B	700	-	48,49,49	2.21	6 (12%)	56,60,60	4.65	9 (16%)
2	EIS	D	700	-	48,49,49	2.09	6 (12%)	56,60,60	4.90	9 (16%)

In the following table, the Chirals column lists the number of chiral outliers, the number of chiral centers analysed, the number of these observed in the model and the number defined in the Chemical Component Dictionary. Similar counts are reported in the Torsion and Rings columns. '-' means no outliers of that kind were identified.

Mol	Type	Chain	Res	Link	Chirals	Torsions	Rings
2	EIS	A	700	-	-	12/46/66/66	0/1/1/1
2	EIS	E	700	-	-	20/42/62/66	0/1/1/1
2	EIS	B	700	-	-	17/46/66/66	0/1/1/1
2	EIS	D	700	-	-	23/46/66/66	0/1/1/1

The worst 5 of 24 bond length outliers are listed below:

Mol	Chain	Res	Type	Atoms	Z	Observed(Å)	Ideal(Å)
2	A	700	EIS	O2-C18	10.43	1.43	1.23
2	B	700	EIS	O2-C18	10.42	1.43	1.23
2	E	700	EIS	O2-C18	10.36	1.43	1.23
2	D	700	EIS	O2-C18	10.09	1.43	1.23
2	A	700	EIS	O-C	-6.28	1.32	1.43

The worst 5 of 35 bond angle outliers are listed below:

Mol	Chain	Res	Type	Atoms	Z	Observed(°)	Ideal(°)
2	B	700	EIS	C19-C18-N	22.46	155.43	115.86
2	D	700	EIS	C19-C18-N	21.77	154.22	115.86
2	D	700	EIS	C1-N-C18	19.93	156.64	123.40
2	B	700	EIS	O2-C18-N	-17.93	92.58	122.95
2	D	700	EIS	O2-C18-N	-16.62	94.81	122.95

There are no chirality outliers.

5 of 72 torsion outliers are listed below:

Mol	Chain	Res	Type	Atoms
2	A	700	EIS	C44-C45-O4-S
2	A	700	EIS	C46-C45-O4-S

*Continued on next page...*

*Continued from previous page...*

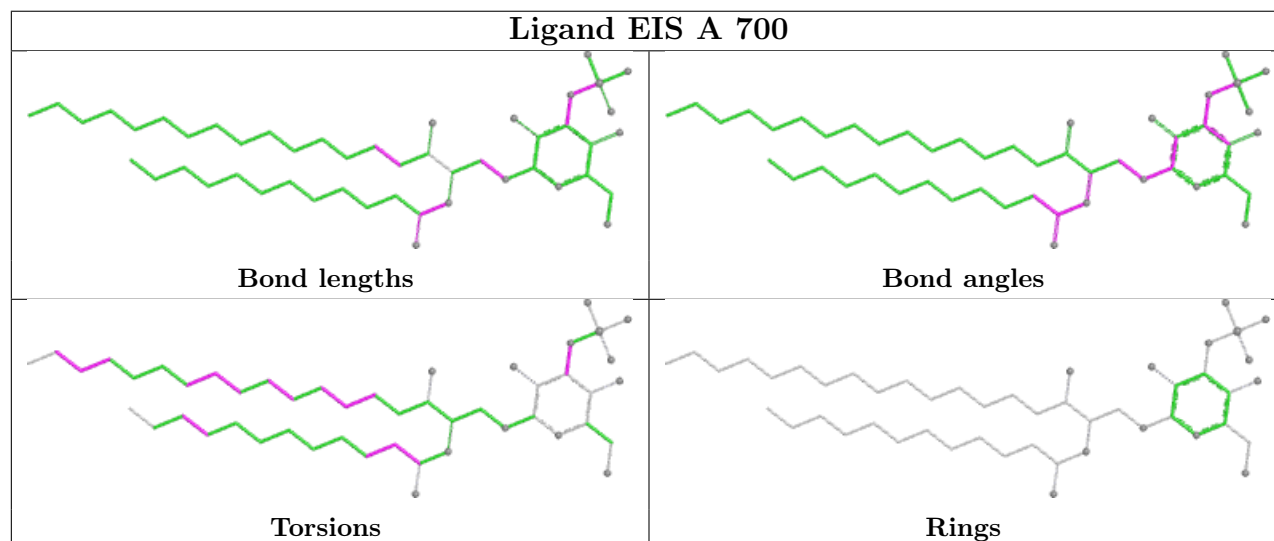
Mol	Chain	Res	Type	Atoms
2	B	700	EIS	C44-C45-O4-S
2	B	700	EIS	C46-C45-O4-S
2	D	700	EIS	C44-C45-O4-S

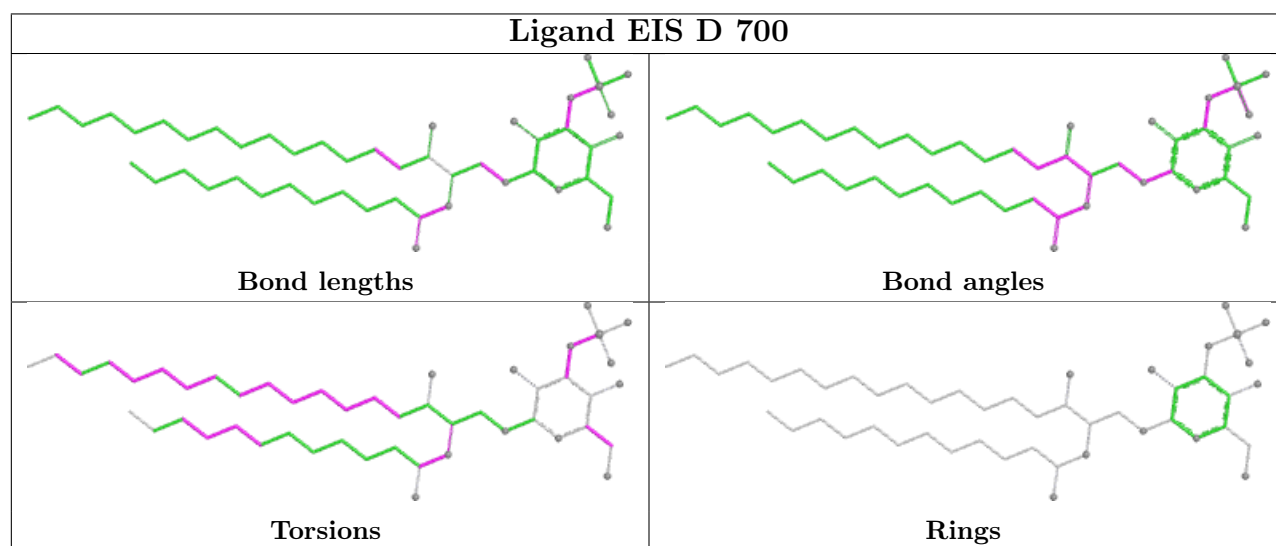
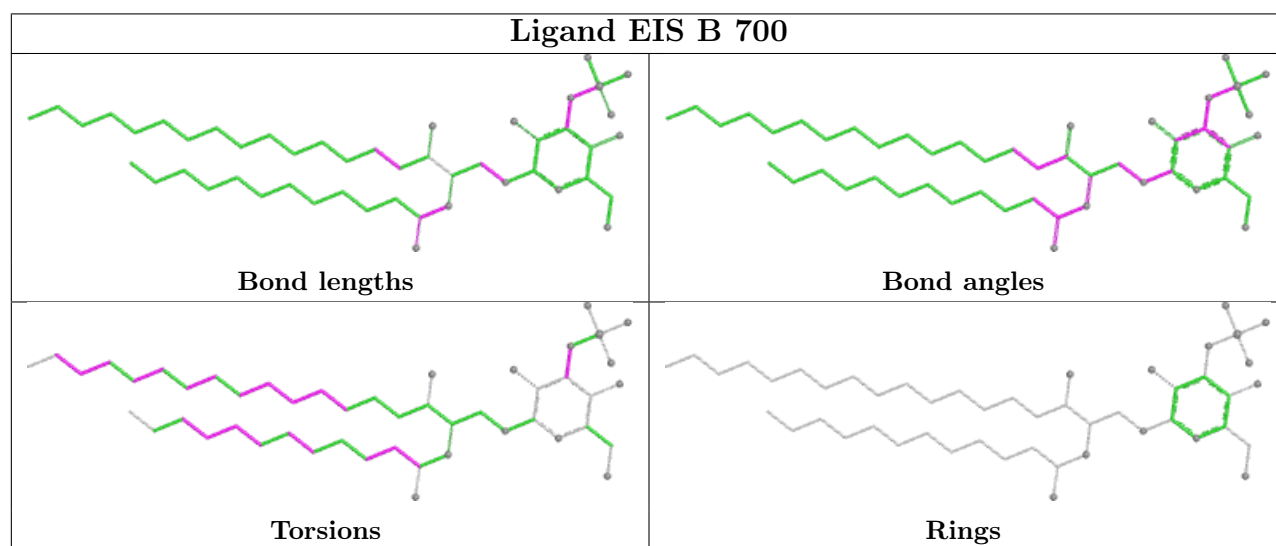
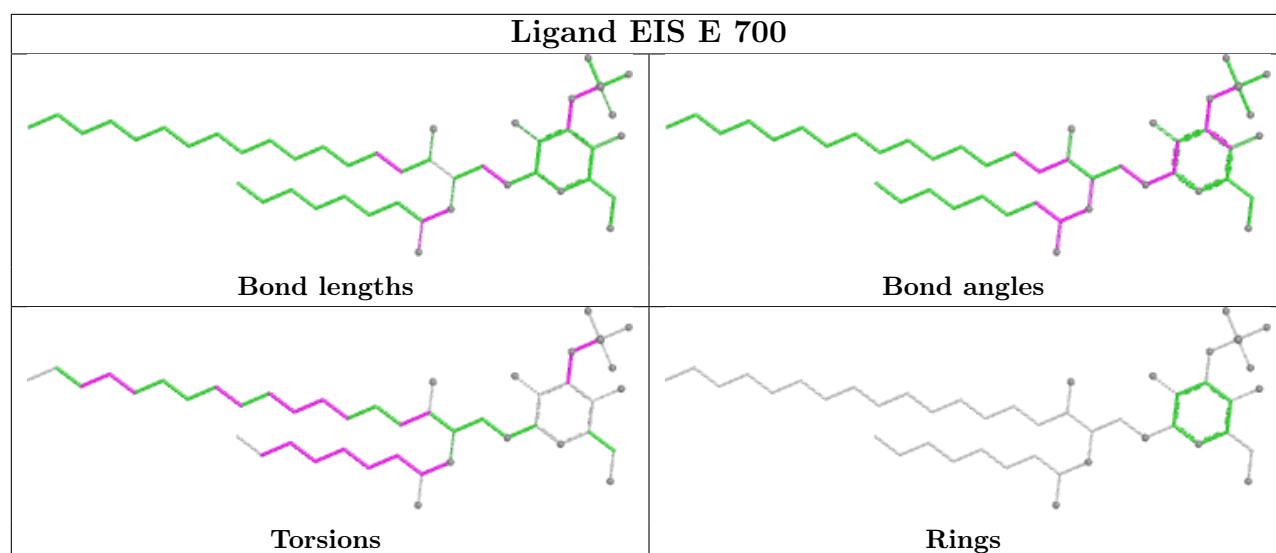
There are no ring outliers.

4 monomers are involved in 32 short contacts:

Mol	Chain	Res	Type	Clashes	Symm-Clashes
2	A	700	EIS	5	0
2	E	700	EIS	16	0
2	B	700	EIS	5	0
2	D	700	EIS	15	0

The following is a two-dimensional graphical depiction of Mogul quality analysis of bond lengths, bond angles, torsion angles, and ring geometry for all instances of the Ligand of Interest. In addition, ligands with molecular weight > 250 and outliers as shown on the validation Tables will also be included. For torsion angles, if less than 5% of the Mogul distribution of torsion angles is within 10 degrees of the torsion angle in question, then that torsion angle is considered an outlier. Any bond that is central to one or more torsion angles identified as an outlier by Mogul will be highlighted in the graph. For rings, the root-mean-square deviation (RMSD) between the ring in question and similar rings identified by Mogul is calculated over all ring torsion angles. If the average RMSD is greater than 60 degrees and the minimal RMSD between the ring in question and any Mogul-identified rings is also greater than 60 degrees, then that ring is considered an outlier. The outliers are highlighted in purple. The color gray indicates Mogul did not find sufficient equivalents in the CSD to analyse the geometry.





## 5.7 Other polymers [i](#)

There are no such residues in this entry.

## 5.8 Polymer linkage issues [i](#)

There are no chain breaks in this entry.

## 6 Fit of model and data [i](#)

### 6.1 Protein, DNA and RNA chains [i](#)

In the following table, the column labelled ‘#RSRZ> 2’ contains the number (and percentage) of RSRZ outliers, followed by percent RSRZ outliers for the chain as percentile scores relative to all X-ray entries and entries of similar resolution. The OWAB column contains the minimum, median, 95<sup>th</sup> percentile and maximum values of the occupancy-weighted average B-factor per residue. The column labelled ‘Q< 0.9’ lists the number of (and percentage) of residues with an average occupancy less than 0.9.

Mol	Chain	Analysed	<RSRZ>	#RSRZ>2	OWAB(Å <sup>2</sup> )	Q<0.9
1	A	209/209 (100%)	-0.52	2 (0%) 79 76	17, 29, 48, 58	3 (1%)
1	B	207/209 (99%)	-0.36	1 (0%) 87 85	21, 34, 58, 82	3 (1%)
1	D	206/209 (98%)	-0.26	8 (3%) 44 41	20, 37, 51, 68	3 (1%)
1	E	208/209 (99%)	-0.37	3 (1%) 73 70	19, 33, 50, 56	3 (1%)
All	All	830/836 (99%)	-0.38	14 (1%) 69 65	17, 33, 53, 82	12 (1%)

The worst 5 of 14 RSRZ outliers are listed below:

Mol	Chain	Res	Type	RSRZ
1	D	170	ASN	5.4
1	E	2	ALA	5.3
1	D	174[A]	GLU	4.5
1	D	168	GLY	3.9
1	E	3	LEU	2.5

### 6.2 Non-standard residues in protein, DNA, RNA chains [i](#)

There are no non-standard protein/DNA/RNA residues in this entry.

### 6.3 Carbohydrates [i](#)

There are no monosaccharides in this entry.

### 6.4 Ligands [i](#)

In the following table, the Atoms column lists the number of modelled atoms in the group and the number defined in the chemical component dictionary. The B-factors column lists the minimum, median, 95<sup>th</sup> percentile and maximum values of B factors of atoms in the group. The column labelled ‘Q< 0.9’ lists the number of atoms with occupancy less than 0.9.

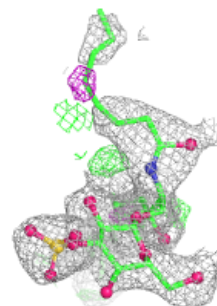
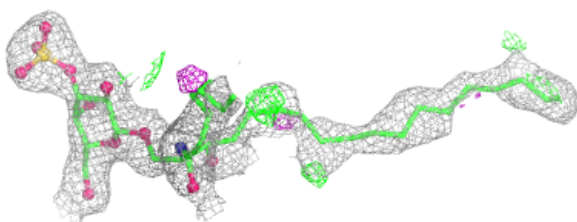
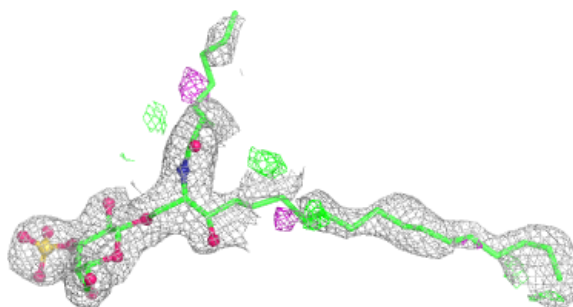


Mol	Type	Chain	Res	Atoms	RSCC	RSR	B-factors( $\text{\AA}^2$ )	Q<0.9
2	EIS	E	700	45/49	0.85	0.12	35,49,61,61	0
2	EIS	D	700	49/49	0.90	0.10	39,52,58,61	0
2	EIS	B	700	49/49	0.94	0.07	28,34,43,45	0
2	EIS	A	700	49/49	0.96	0.06	21,32,42,44	0

The following is a graphical depiction of the model fit to experimental electron density of all instances of the Ligand of Interest. In addition, ligands with molecular weight > 250 and outliers as shown on the geometry validation Tables will also be included. Each fit is shown from different orientation to approximate a three-dimensional view.

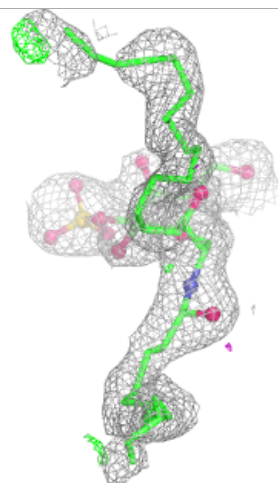
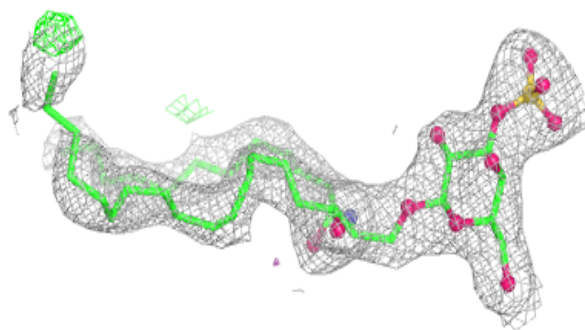
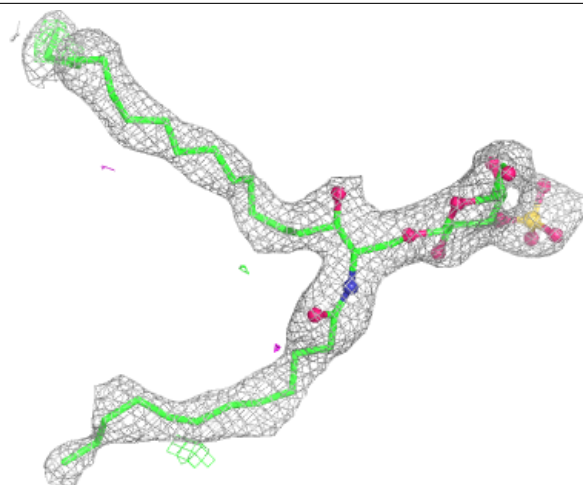
**Electron density around EIS E 700:**

2mF<sub>o</sub>-DF<sub>c</sub> (at 0.7 rmsd) in gray  
mF<sub>o</sub>-DF<sub>c</sub> (at 3 rmsd) in purple (negative)  
and green (positive)



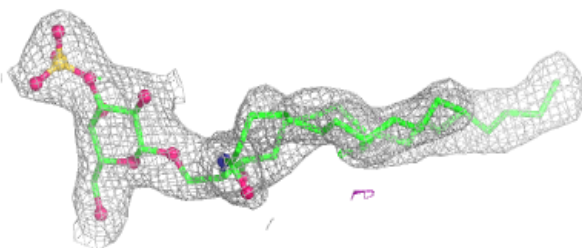
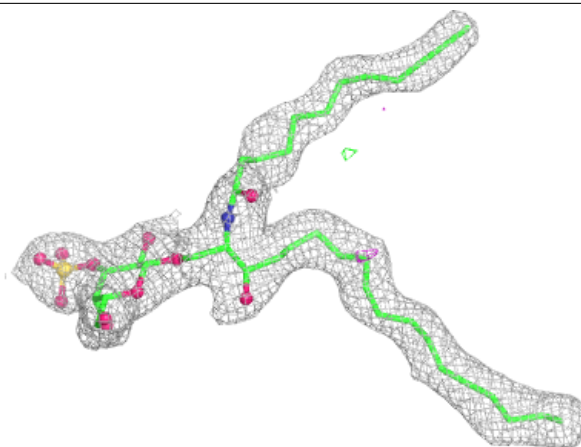
**Electron density around EIS D 700:**

$2mF_o-DF_c$  (at 0.7 rmsd) in gray  
 $mF_o-DF_c$  (at 3 rmsd) in purple (negative)  
and green (positive)



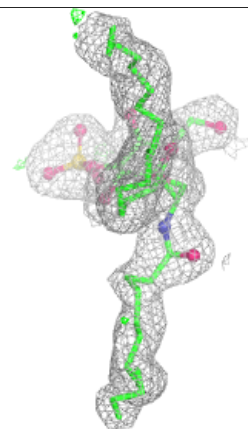
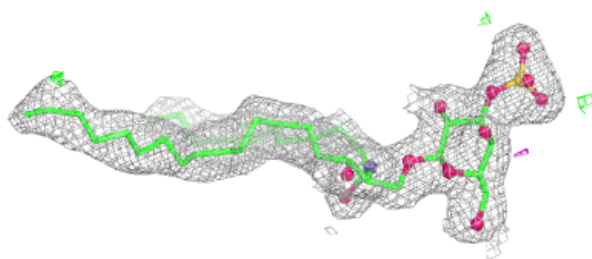
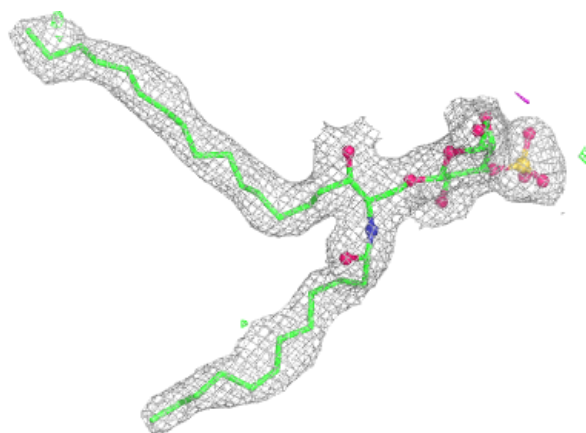
**Electron density around EIS B 700:**

$2mF_o-DF_c$  (at 0.7 rmsd) in gray  
 $mF_o-DF_c$  (at 3 rmsd) in purple (negative)  
and green (positive)



**Electron density around EIS A 700:**

$2mF_o-DF_c$  (at 0.7 rmsd) in gray  
 $mF_o-DF_c$  (at 3 rmsd) in purple (negative)  
and green (positive)



## 6.5 Other polymers ⓘ

There are no such residues in this entry.