



Full wwPDB EM Validation Report ⓘ

Nov 9, 2024 – 11:15 am GMT

PDB ID : 6GYP
EMDB ID : EMD-0095
Title : Cryo-EM structure of the CBF3-core-Ndc10-DBD complex of the budding yeast kinetochore
Authors : Yan, K.; Zhang, Z.; Yang, J.; McLaughlin, S.H.; Barford, D.
Deposited on : 2018-07-01
Resolution : 3.60 Å(reported)

This is a Full wwPDB EM Validation Report for a publicly released PDB entry.

We welcome your comments at validation@mail.wwpdb.org

A user guide is available at

<https://www.wwpdb.org/validation/2017/EMValidationReportHelp>
with specific help available everywhere you see the ⓘ symbol.

The types of validation reports are described at

<http://www.wwpdb.org/validation/2017/FAQs#types>.

The following versions of software and data (see [references ⓘ](#)) were used in the production of this report:

EMDB validation analysis : 0.0.1.dev113
Mogul : 1.8.4, CSD as541be (2020)
MolProbity : 4.02b-467
Percentile statistics : 20231227.v01 (using entries in the PDB archive December 27th 2023)
MapQ : 1.9.13
Ideal geometry (proteins) : Engh & Huber (2001)
Ideal geometry (DNA, RNA) : Parkinson et al. (1996)
Validation Pipeline (wwPDB-VP) : 2.39

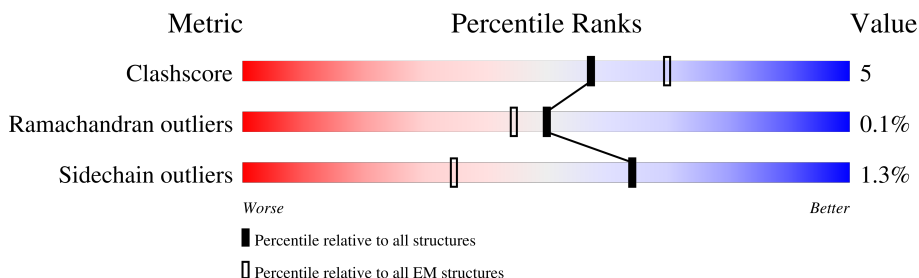
1 Overall quality at a glance

The following experimental techniques were used to determine the structure:

ELECTRON MICROSCOPY

The reported resolution of this entry is 3.60 Å.

Percentile scores (ranging between 0-100) for global validation metrics of the entry are shown in the following graphic. The table shows the number of entries on which the scores are based.



Metric	Whole archive (#Entries)	EM structures (#Entries)
Clashscore	210492	15764
Ramachandran outliers	207382	16835
Sidechain outliers	206894	16415

The table below summarises the geometric issues observed across the polymeric chains and their fit to the map. The red, orange, yellow and green segments of the bar indicate the fraction of residues that contain outliers for ≥ 3 , 2, 1 and 0 types of geometric quality criteria respectively. A grey segment represents the fraction of residues that are not modelled. The numeric value for each fraction is indicated below the corresponding segment, with a dot representing fractions $\leq 5\%$. The upper red bar (where present) indicates the fraction of residues that have poor fit to the EM map (all-atom inclusion $< 40\%$). The numeric value is given above the bar.

Mol	Chain	Length	Quality of chain
1	B	608	
2	A	478	
3	C	564	
4	D	194	
5	E	956	

2 Entry composition

There are 11 unique types of molecules in this entry. The entry contains 17811 atoms, of which 0 are hydrogens and 0 are deuteriums.

In the tables below, the AltConf column contains the number of residues with at least one atom in alternate conformation and the Trace column contains the number of residues modelled with at most 2 atoms.

- Molecule 1 is a protein called Centromere DNA-binding protein complex CBF3 subunit B.

Mol	Chain	Residues	Atoms					AltConf	Trace
1	B	527	Total	C	N	O	S	0	0
			4374	2844	704	805	21		

- Molecule 2 is a protein called Centromere DNA-binding protein complex CBF3 subunit C.

Mol	Chain	Residues	Atoms					AltConf	Trace
2	A	423	Total	C	N	O	S	0	0
			3526	2299	594	621	12		

- Molecule 3 is a protein called Centromere DNA-binding protein complex CBF3 subunit B.

Mol	Chain	Residues	Atoms					AltConf	Trace
3	C	528	Total	C	N	O	S	0	1
			4362	2839	702	800	21		

There are 4 discrepancies between the modelled and reference sequences:

Chain	Residue	Modelled	Actual	Comment	Reference
C	1	MET	-	initiating methionine	UNP P40969
C	2	PHE	-	expression tag	UNP P40969
C	3	ASN	-	expression tag	UNP P40969
C	4	ARG	-	expression tag	UNP P40969

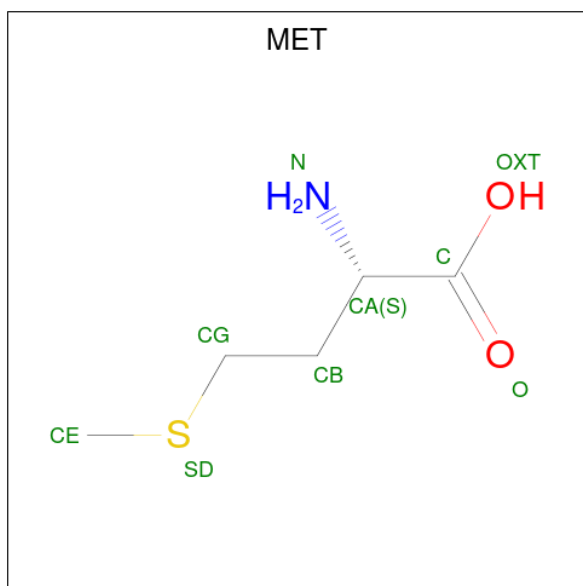
- Molecule 4 is a protein called Suppressor of kinetochore protein 1.

Mol	Chain	Residues	Atoms					AltConf	Trace
4	D	151	Total	C	N	O	S	0	0
			1226	767	214	241	4		

- Molecule 5 is a protein called Centromere DNA-binding protein complex CBF3 subunit A.

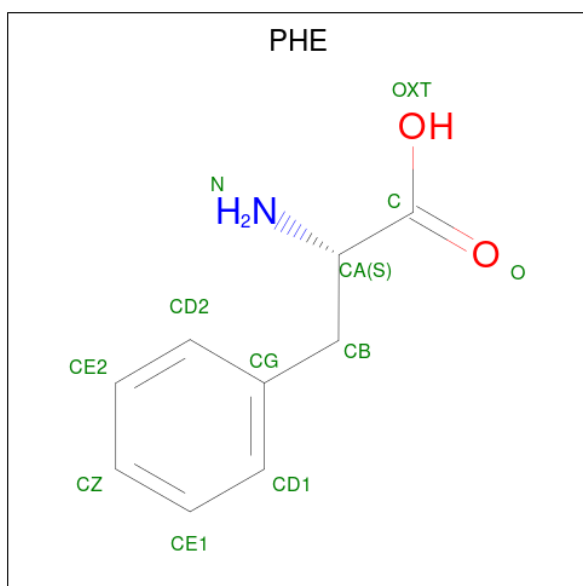
Mol	Chain	Residues	Atoms					AltConf	Trace
5	E	512	Total	C	N	O	S	0	0
			4265	2755	706	794	10		

- Molecule 6 is METHIONINE (three-letter code: MET) (formula: $C_5H_{11}NO_2S$).



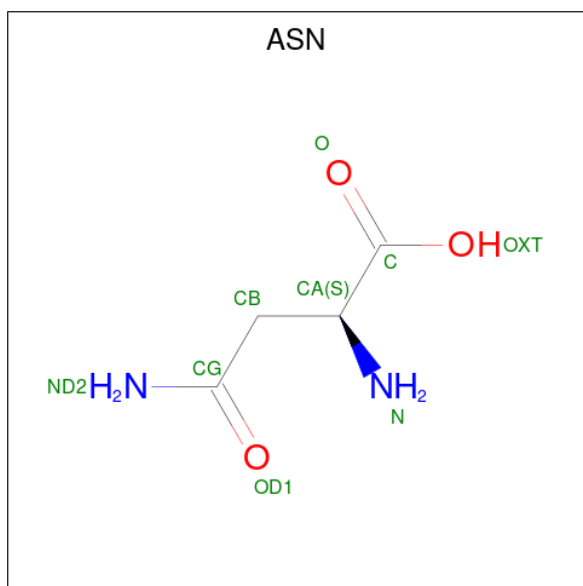
Mol	Chain	Residues	Atoms				AltConf
6	B	1	Total	C	N	O	0
			5	3	1	1	

- Molecule 7 is PHENYLALANINE (three-letter code: PHE) (formula: $C_9H_9NO_2$).



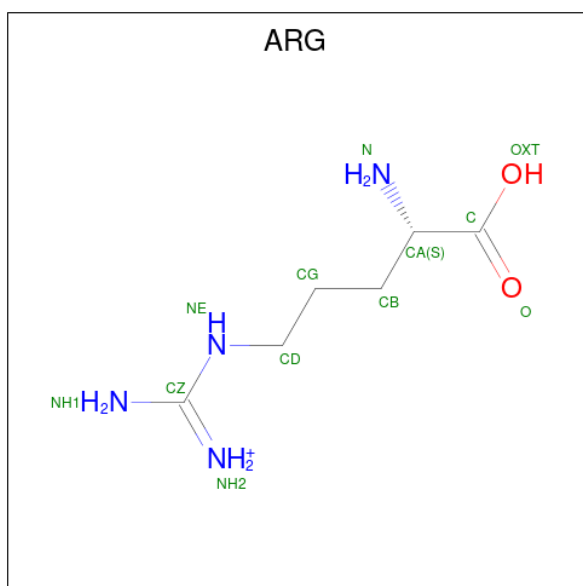
Mol	Chain	Residues	Atoms				AltConf
7	B	1	Total	C	N	O	0
			11	9	1	1	

- Molecule 8 is ASPARAGINE (three-letter code: ASN) (formula: $C_4H_8N_2O_3$).



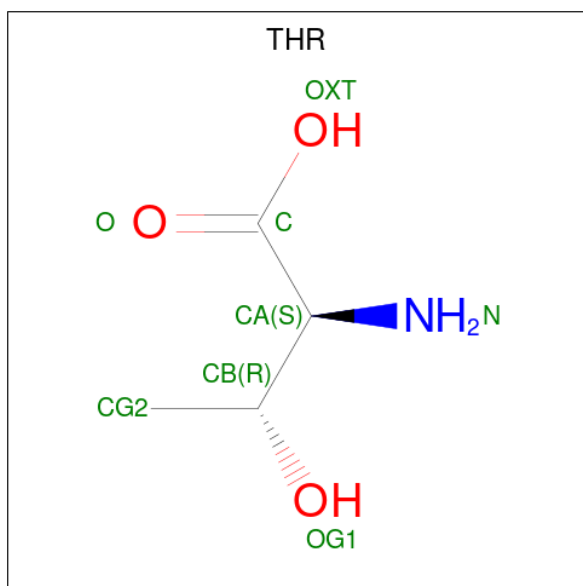
Mol	Chain	Residues	Atoms				AltConf
8	B	1	Total	C	N	O	0
			8	4	2	2	

- Molecule 9 is ARGinine (three-letter code: ARG) (formula: $C_6H_{15}N_4O_2$).



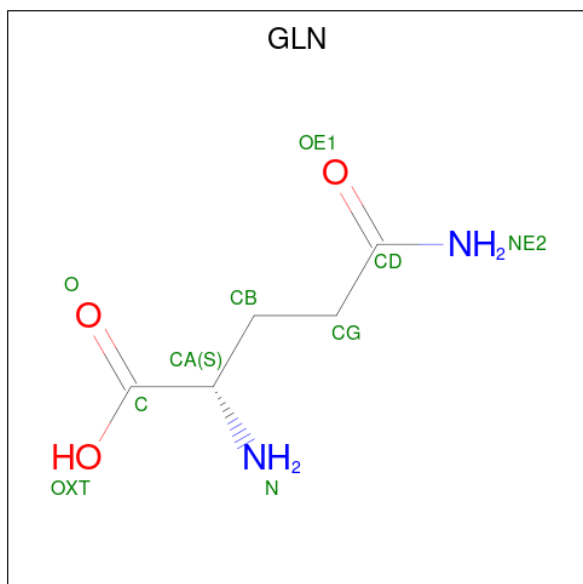
Mol	Chain	Residues	Atoms				AltConf
9	B	1	Total	C	N	O	0
			11	6	4	1	

- Molecule 10 is THREONINE (three-letter code: THR) (formula: $C_4H_9NO_3$).



Mol	Chain	Residues	Atoms				AltConf
10	B	1	Total	C	N	O	0
			7	4	1	2	
10	B	1	Total	C	N	O	0
			7	4	1	2	

- Molecule 11 is GLUTAMINE (three-letter code: GLN) (formula: $C_5H_{10}N_2O_3$).

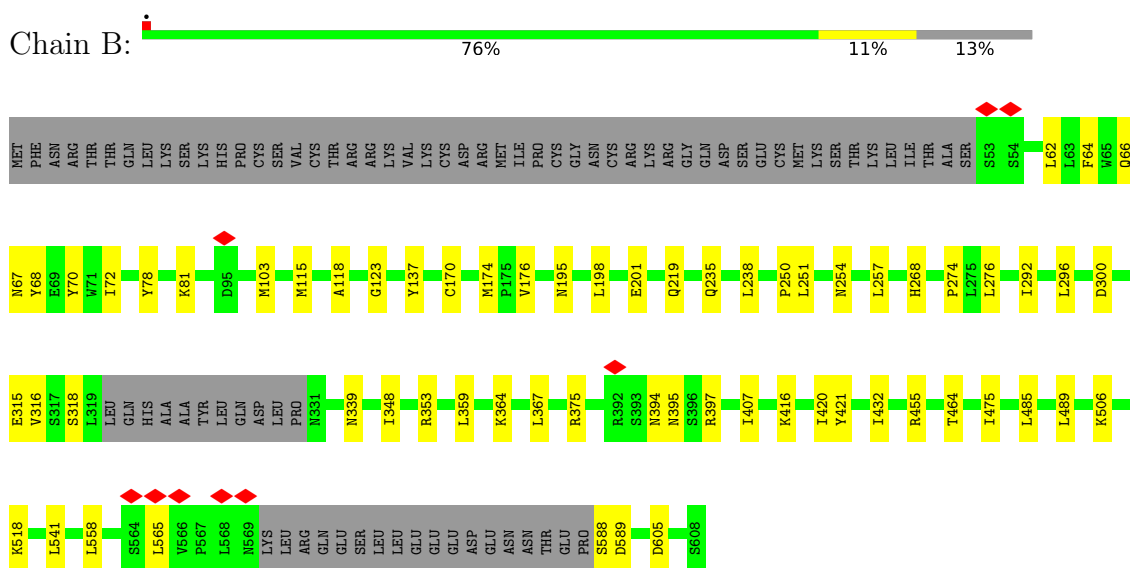


Mol	Chain	Residues	Atoms				AltConf
11	B	1	Total	C	N	O	0
			9	5	2	2	

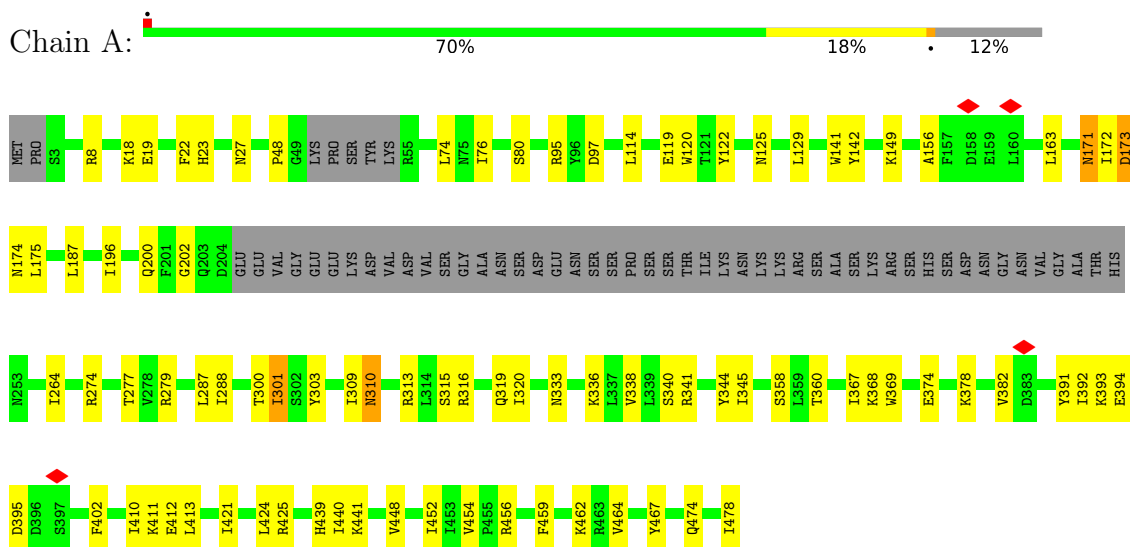
3 Residue-property plots

These plots are drawn for all protein, RNA, DNA and oligosaccharide chains in the entry. The first graphic for a chain summarises the proportions of the various outlier classes displayed in the second graphic. The second graphic shows the sequence view annotated by issues in geometry and atom inclusion in map density. Residues are color-coded according to the number of geometric quality criteria for which they contain at least one outlier: green = 0, yellow = 1, orange = 2 and red = 3 or more. A red diamond above a residue indicates a poor fit to the EM map for this residue (all-atom inclusion < 40%). Stretches of 2 or more consecutive residues without any outlier are shown as a green connector. Residues present in the sample, but not in the model, are shown in grey.

- Molecule 1: Centromere DNA-binding protein complex CBF3 subunit B

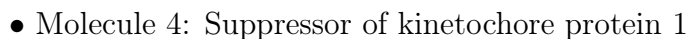


- Molecule 2: Centromere DNA-binding protein complex CBF3 subunit C

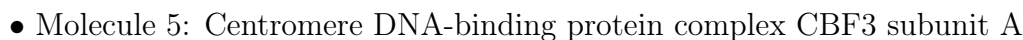


- Molecule 3: Centromere DNA-binding protein complex CBF3 subunit B

Frequency	Percentage
Daily	84%
Weekly	9%
Monthly	6%



Response	Percentage
A lot	64%
Some	14%
Not much	22%



Frequency	Percentage
Very often	33%
Often	46%
Sometimes	8%
Never	46%





4 Experimental information

Property	Value	Source
EM reconstruction method	SINGLE PARTICLE	Depositor
Imposed symmetry	POINT, Not provided	
Number of particles used	73894	Depositor
Resolution determination method	FSC 0.143 CUT-OFF	Depositor
CTF correction method	PHASE FLIPPING AND AMPLITUDE CORRECTION	Depositor
Microscope	FEI TITAN KRIOS	Depositor
Voltage (kV)	300	Depositor
Electron dose ($e^-/\text{\AA}^2$)	27	Depositor
Minimum defocus (nm)	Not provided	
Maximum defocus (nm)	Not provided	
Magnification	Not provided	
Image detector	FEI FALCON III (4k x 4k)	Depositor
Maximum map value	0.610	Depositor
Minimum map value	-0.412	Depositor
Average map value	0.000	Depositor
Map value standard deviation	0.007	Depositor
Recommended contour level	0.05	Depositor
Map size (Å)	423.99997, 423.99997, 423.99997	wwPDB
Map dimensions	400, 400, 400	wwPDB
Map angles (°)	90.0, 90.0, 90.0	wwPDB
Pixel spacing (Å)	1.06, 1.06, 1.06	Depositor

5 Model quality

5.1 Standard geometry

The Z score for a bond length (or angle) is the number of standard deviations the observed value is removed from the expected value. A bond length (or angle) with $|Z| > 5$ is considered an outlier worth inspection. RMSZ is the root-mean-square of all Z scores of the bond lengths (or angles).

Mol	Chain	Bond lengths		Bond angles	
		RMSZ	# Z >5	RMSZ	# Z >5
1	B	0.36	0/4480	0.54	0/6068
2	A	0.37	0/3604	0.67	3/4869 (0.1%)
3	C	0.31	0/4467	0.49	0/6050
4	D	0.33	0/1247	0.52	0/1687
5	E	0.27	0/4391	0.49	1/5960 (0.0%)
All	All	0.33	0/18189	0.55	4/24634 (0.0%)

Chiral center outliers are detected by calculating the chiral volume of a chiral center and verifying if the center is modelled as a planar moiety or with the opposite hand. A planarity outlier is detected by checking planarity of atoms in a peptide group, atoms in a mainchain group or atoms of a sidechain that are expected to be planar.

Mol	Chain	#Chirality outliers	#Planarity outliers
2	A	0	4

There are no bond length outliers.

All (4) bond angle outliers are listed below:

Mol	Chain	Res	Type	Atoms	Z	Observed(°)	Ideal(°)
2	A	173	ASP	CB-CG-OD1	8.46	125.91	118.30
2	A	74	LEU	CA-CB-CG	5.80	128.64	115.30
2	A	172	ILE	C-N-CA	5.56	135.59	121.70
5	E	90	LEU	CA-CB-CG	5.04	126.89	115.30

There are no chirality outliers.

All (4) planarity outliers are listed below:

Mol	Chain	Res	Type	Group
2	A	300	THR	Peptide
2	A	301	ILE	Peptide
2	A	368	LYS	Peptide
2	A	421	ILE	Peptide

5.2 Too-close contacts ⓘ

In the following table, the Non-H and H(model) columns list the number of non-hydrogen atoms and hydrogen atoms in the chain respectively. The H(added) column lists the number of hydrogen atoms added and optimized by MolProbity. The Clashes column lists the number of clashes within the asymmetric unit, whereas Symm-Clashes lists symmetry-related clashes.

Mol	Chain	Non-H	H(model)	H(added)	Clashes	Symm-Clashes
1	B	4374	0	4334	36	0
2	A	3526	0	3558	54	0
3	C	4362	0	4332	29	0
4	D	1226	0	1194	18	0
5	E	4265	0	4150	38	0
6	B	5	0	1	0	0
7	B	11	0	9	0	0
8	B	8	0	6	0	0
9	B	11	0	13	0	0
10	B	14	0	14	0	0
11	B	9	0	8	0	0
All	All	17811	0	17619	162	0

The all-atom clashscore is defined as the number of clashes found per 1000 atoms (including hydrogen atoms). The all-atom clashscore for this structure is 5.

All (162) close contacts within the same asymmetric unit are listed below, sorted by their clash magnitude.

Atom-1	Atom-2	Interatomic distance (Å)	Clash overlap (Å)
3:C:57:TYR:O	3:C:61:LEU:HB2	1.92	0.70
2:A:287:LEU:HD12	2:A:301:ILE:HD12	1.75	0.69
2:A:18:LYS:HG2	2:A:114:LEU:HD11	1.80	0.64
5:E:297:ILE:HB	5:E:301:SER:H	1.61	0.63
1:B:315:GLU:O	1:B:353:ARG:NH2	2.31	0.63
2:A:173:ASP:HB3	2:A:202:GLY:HA3	1.80	0.61
5:E:511:ILE:HD12	5:E:525:LYS:HE3	1.82	0.61
5:E:479:PHE:HA	5:E:537:ARG:HH22	1.66	0.61
3:C:103:MET:SD	3:C:219:GLN:NE2	2.74	0.61
1:B:348:ILE:HD11	1:B:407:ILE:HB	1.82	0.59
5:E:470:SER:O	5:E:502:LYS:NZ	2.36	0.58
1:B:62:LEU:HB3	1:B:420:ILE:HG12	1.86	0.57
2:A:448:VAL:HG11	2:A:452:ILE:HD11	1.85	0.56
2:A:287:LEU:HG	2:A:288:ILE:HG23	1.88	0.56
5:E:356:ARG:NH2	5:E:363:ASN:OD1	2.37	0.56
2:A:97:ASP:OD2	4:D:161:ARG:NH1	2.39	0.56

Continued on next page...

Continued from previous page...

Atom-1	Atom-2	Interatomic distance (Å)	Clash overlap (Å)
5:E:191:ASN:ND2	5:E:349:CYS:SG	2.78	0.55
2:A:315:SER:HA	2:A:340:SER:HB3	1.88	0.55
5:E:247:ASP:OD1	5:E:467:ARG:NH2	2.40	0.55
2:A:316:ARG:HH12	2:A:341:ARG:HH11	1.55	0.54
2:A:454:VAL:HG11	2:A:464:VAL:HG11	1.88	0.54
4:D:164:GLU:OE2	4:D:167:ARG:NH2	2.39	0.54
5:E:115:ASN:ND2	5:E:165:GLN:OE1	2.39	0.54
3:C:439:ILE:HD11	3:C:489:LEU:HD22	1.89	0.54
4:D:119:TRP:O	4:D:123:PHE:HB2	2.07	0.54
5:E:98:LYS:HB3	5:E:101:GLU:HG2	1.89	0.54
1:B:375:ARG:HH11	2:A:462:LYS:HE2	1.73	0.54
2:A:393:LYS:HE3	2:A:395:ASP:HB2	1.90	0.53
5:E:227:SER:OG	5:E:230:GLU:OE1	2.26	0.53
5:E:284:THR:HG23	5:E:468:PHE:HA	1.88	0.53
2:A:22:PHE:O	4:D:112:LYS:NZ	2.41	0.53
2:A:274:ARG:HA	2:A:309:ILE:HA	1.89	0.53
5:E:293:ARG:NH1	5:E:322:PRO:O	2.41	0.53
2:A:412:GLU:OE2	2:A:456:ARG:NH1	2.41	0.53
2:A:119:GLU:OE2	2:A:174:ASN:ND2	2.41	0.53
2:A:277:THR:HB	2:A:313:ARG:HB3	1.90	0.53
3:C:57:TYR:HB3	3:C:533:PHE:HD2	1.74	0.52
2:A:440:ILE:HB	2:A:464:VAL:HG23	1.91	0.52
3:C:4:ARG:N	3:C:531:ASP:O	2.43	0.52
2:A:374:GLU:OE2	2:A:378:LYS:NZ	2.43	0.52
5:E:287:ALA:HB2	5:E:464:LEU:HB3	1.92	0.51
1:B:66:GLN:OE1	1:B:416:LYS:NZ	2.43	0.51
3:C:300:ASP:OD2	3:C:313:HIS:ND1	2.39	0.51
2:A:319:GLN:HG2	2:A:344:TYR:HB3	1.92	0.51
5:E:466:GLU:OE1	5:E:467:ARG:NH1	2.44	0.51
2:A:367:ILE:HB	2:A:448:VAL:HG12	1.91	0.51
1:B:78:TYR:OH	1:B:464:THR:OG1	2.27	0.50
2:A:156:ALA:HB1	2:A:163:LEU:HD22	1.93	0.50
3:C:66:GLN:OE1	3:C:416:LYS:NZ	2.45	0.50
1:B:250:PRO:O	1:B:254:ASN:ND2	2.43	0.50
2:A:95:ARG:NE	2:A:141:TRP:O	2.43	0.50
4:D:24:GLU:HB3	4:D:30:LYS:HD2	1.94	0.50
1:B:174:MET:O	1:B:455:ARG:NH1	2.41	0.50
1:B:276:LEU:O	2:A:425:ARG:NH1	2.45	0.50
1:B:394:ASN:OD1	1:B:397:ARG:NH1	2.45	0.50
5:E:308:ASN:O	5:E:442:TYR:OH	2.30	0.49
2:A:410:ILE:HD13	2:A:459:PHE:HZ	1.77	0.49

Continued on next page...

Continued from previous page...

Atom-1	Atom-2	Interatomic distance (Å)	Clash overlap (Å)
2:A:200:GLN:OE1	2:A:279:ARG:NH2	2.45	0.49
1:B:588:SER:OG	1:B:589:ASP:N	2.45	0.49
4:D:114:ALA:O	4:D:152:LYS:NZ	2.38	0.49
2:A:129:LEU:N	2:A:142:TYR:O	2.42	0.49
2:A:171:ASN:HA	2:A:200:GLN:HB2	1.94	0.49
2:A:336:LYS:HG3	2:A:358:SER:HB3	1.94	0.49
1:B:195:ASN:HB2	1:B:198:LEU:HD12	1.95	0.49
1:B:274:PRO:HG2	2:A:424:LEU:HD13	1.94	0.49
3:C:174:MET:O	3:C:455:ARG:NH1	2.43	0.48
5:E:489:ILE:O	5:E:492:ASN:ND2	2.46	0.48
5:E:111:GLU:OE1	5:E:165:GLN:NE2	2.42	0.48
2:A:413:LEU:HB2	2:A:478:ILE:HD13	1.95	0.48
1:B:296:LEU:O	1:B:300:ASP:HB2	2.14	0.48
5:E:254:VAL:HG13	5:E:267:HIS:HE1	1.79	0.48
1:B:565:LEU:HD22	3:C:281:VAL:HG13	1.96	0.48
2:A:274:ARG:HG2	2:A:310:ASN:HB2	1.94	0.48
3:C:238:LEU:HD22	3:C:295:ARG:HG3	1.95	0.48
2:A:459:PHE:HA	2:A:464:VAL:HG12	1.96	0.48
5:E:257:SER:HB2	5:E:264:PRO:HG3	1.95	0.48
2:A:402:PHE:HE2	2:A:462:LYS:HD2	1.79	0.47
1:B:123:GLY:HA3	1:B:395:ASN:HD22	1.80	0.47
2:A:76:ILE:O	5:E:47:THR:OG1	2.32	0.47
3:C:467:VAL:HG23	3:C:489:LEU:HB3	1.96	0.47
5:E:90:LEU:HD23	5:E:94:ILE:HD11	1.95	0.47
3:C:105:TYR:OH	3:C:184:SER:O	2.32	0.47
4:D:29:LEU:HD13	4:D:77:MET:HG2	1.96	0.47
5:E:251:TYR:HB3	5:E:270:LEU:HB2	1.97	0.47
4:D:8:LEU:HD21	4:D:29:LEU:HD22	1.97	0.47
4:D:170:PHE:HE2	4:D:181:GLU:HG3	1.79	0.47
4:D:6:VAL:HG21	4:D:29:LEU:HD21	1.97	0.47
1:B:78:TYR:HH	1:B:464:THR:HG1	1.58	0.47
2:A:18:LYS:HD2	2:A:19:GLU:HG3	1.96	0.47
1:B:558:LEU:HD11	3:C:289:LEU:HD11	1.96	0.46
2:A:394:GLU:HA	2:A:411:LYS:HA	1.97	0.46
1:B:103:MET:SD	1:B:219:GLN:NE2	2.85	0.46
1:B:432:ILE:HG23	1:B:485:LEU:HD22	1.96	0.46
3:C:83:ARG:NH2	3:C:554:GLU:OE1	2.45	0.46
5:E:194:ASN:HD21	5:E:536:GLU:HB2	1.79	0.46
5:E:370:ASP:OD1	5:E:373:THR:OG1	2.28	0.46
2:A:338:VAL:HB	2:A:360:THR:HG23	1.98	0.46
2:A:345:ILE:HD11	2:A:367:ILE:HG12	1.96	0.45

Continued on next page...

Continued from previous page...

Atom-1	Atom-2	Interatomic distance (Å)	Clash overlap (Å)
1:B:235:GLN:HE21	1:B:292:ILE:HD11	1.81	0.45
5:E:49:TYR:HB2	5:E:132:LEU:HD22	1.99	0.45
1:B:70:TYR:HB2	1:B:359:LEU:HB3	1.98	0.45
1:B:257:LEU:HD21	1:B:300:ASP:HA	1.99	0.45
5:E:177:ASN:HD22	5:E:180:VAL:HB	1.82	0.45
3:C:230:ASP:OD2	3:C:232:ARG:NH2	2.46	0.45
4:D:4:SER:OG	4:D:5:ASN:N	2.49	0.45
5:E:297:ILE:HG22	5:E:299:SER:H	1.82	0.45
2:A:23:HIS:HB3	4:D:152:LYS:HG2	1.99	0.44
5:E:272:LEU:O	5:E:283:GLN:NE2	2.50	0.44
2:A:27:ASN:HB2	4:D:159:ARG:HH21	1.83	0.44
4:D:20:LYS:HE2	4:D:33:LEU:HD13	1.99	0.44
2:A:264:ILE:HD11	2:A:287:LEU:HD13	2.00	0.44
5:E:241:LEU:HD21	5:E:460:LEU:HA	1.99	0.44
3:C:57:TYR:O	3:C:61:LEU:CB	2.64	0.44
3:C:200:TRP:HA	3:C:204:MET:HB3	2.00	0.44
2:A:392:ILE:HG21	2:A:411:LYS:HD3	1.99	0.43
1:B:81:LYS:HB2	1:B:250:PRO:HG2	2.00	0.43
5:E:383:HIS:O	5:E:389:GLN:NE2	2.41	0.43
3:C:351:LEU:HD11	3:C:373:ILE:HG23	2.00	0.43
2:A:382:VAL:HG11	2:A:391:TYR:HE2	1.82	0.43
3:C:300:ASP:OD1	3:C:308:LYS:NZ	2.34	0.43
4:D:119:TRP:O	4:D:123:PHE:CB	2.65	0.43
1:B:506:LYS:NZ	1:B:605:ASP:O	2.51	0.43
5:E:271:ALA:HB2	5:E:399:ILE:HD13	2.01	0.43
3:C:189:HIS:HB3	3:C:196:LYS:HG2	2.01	0.42
5:E:509:SER:O	5:E:527:LYS:NZ	2.45	0.42
1:B:475:ILE:HG12	1:B:518:LYS:HB2	2.01	0.42
2:A:439:HIS:HE1	2:A:441:LYS:HD2	1.84	0.42
2:A:120:TRP:HE1	2:A:196:ILE:HG22	1.84	0.42
5:E:87:TRP:HD1	5:E:90:LEU:HD12	1.83	0.42
1:B:81:LYS:HB3	1:B:251:LEU:HD13	2.00	0.42
1:B:176:VAL:HG21	1:B:201:GLU:HB3	2.01	0.42
3:C:257:LEU:HD21	3:C:300:ASP:HA	2.01	0.42
5:E:166:LYS:HA	5:E:169:THR:HG22	2.02	0.42
5:E:210:GLU:HA	5:E:213:ARG:HG2	2.01	0.42
3:C:106:LEU:HD21	3:C:111:SER:HB3	2.01	0.42
3:C:257:LEU:HD23	3:C:308:LYS:HE3	2.01	0.42
1:B:118:ALA:HB2	1:B:170:CYS:SG	2.60	0.42
4:D:93:TRP:HH2	4:D:145:PRO:HB2	1.85	0.42
5:E:517:LEU:HB2	5:E:520:PHE:HB2	2.01	0.42

Continued on next page...

Continued from previous page...

Atom-1	Atom-2	Interatomic distance (Å)	Clash overlap (Å)
1:B:238:LEU:HD21	1:B:296:LEU:HA	2.02	0.41
1:B:268:HIS:NE2	3:C:306:PRO:O	2.41	0.41
1:B:316:VAL:HG12	1:B:318:SER:H	1.85	0.41
1:B:115:MET:HB3	1:B:137:TYR:HE1	1.85	0.41
2:A:320:ILE:HG12	2:A:345:ILE:HG22	2.02	0.41
5:E:73:VAL:HA	5:E:74:PRO:HD3	1.95	0.41
3:C:529:SER:N	3:C:532:SER:O	2.53	0.41
2:A:360:THR:HA	2:A:440:ILE:O	2.21	0.41
1:B:364:LYS:HG2	1:B:421:TYR:HD1	1.86	0.41
2:A:315:SER:O	2:A:341:ARG:N	2.54	0.41
3:C:68:TYR:CZ	3:C:72:ILE:HG13	2.56	0.41
3:C:526:LEU:HA	3:C:535:HIS:HD2	1.86	0.41
2:A:149:LYS:NZ	4:D:180:GLU:OE2	2.42	0.40
3:C:195:ASN:OD1	3:C:195:ASN:N	2.55	0.40
5:E:455:ARG:HA	5:E:458:LEU:HD12	2.04	0.40
1:B:64:PHE:HE2	1:B:541:LEU:HB3	1.86	0.40
1:B:68:TYR:CZ	1:B:72:ILE:HG13	2.56	0.40
2:A:122:TYR:CZ	2:A:125:ASN:HA	2.56	0.40
2:A:413:LEU:HD13	2:A:478:ILE:HB	2.03	0.40
2:A:441:LYS:HE3	2:A:467:TYR:HE2	1.87	0.40
2:A:8:ARG:HH21	4:D:129:GLU:HG2	1.87	0.40
2:A:48:PRO:HG3	2:A:80:SER:H	1.86	0.40
3:C:319:LEU:HD21	3:C:347:LYS:HD2	2.04	0.40

There are no symmetry-related clashes.

5.3 Torsion angles [i](#)

5.3.1 Protein backbone [i](#)

In the following table, the Percentiles column shows the percent Ramachandran outliers of the chain as a percentile score with respect to all PDB entries followed by that with respect to all EM entries.

The Analysed column shows the number of residues for which the backbone conformation was analysed, and the total number of residues.

Mol	Chain	Analysed	Favoured	Allowed	Outliers	Percentiles	
1	B	521/608 (86%)	496 (95%)	25 (5%)	0	100	100
2	A	417/478 (87%)	358 (86%)	57 (14%)	2 (0%)	25	59

Continued on next page...

Continued from previous page...

Mol	Chain	Analysed	Favoured	Allowed	Outliers	Percentiles	
3	C	520/564 (92%)	503 (97%)	17 (3%)	0	100	100
4	D	147/194 (76%)	140 (95%)	7 (5%)	0	100	100
5	E	510/956 (53%)	467 (92%)	43 (8%)	0	100	100
All	All	2115/2800 (76%)	1964 (93%)	149 (7%)	2 (0%)	50	79

All (2) Ramachandran outliers are listed below:

Mol	Chain	Res	Type
2	A	369	TRP
2	A	303	TYR

5.3.2 Protein sidechains ⓘ

In the following table, the Percentiles column shows the percent sidechain outliers of the chain as a percentile score with respect to all PDB entries followed by that with respect to all EM entries.

The Analysed column shows the number of residues for which the sidechain conformation was analysed, and the total number of residues.

Mol	Chain	Analysed	Rotameric	Outliers	Percentiles	
1	B	492/569 (86%)	488 (99%)	4 (1%)	79	88
2	A	388/449 (86%)	382 (98%)	6 (2%)	60	78
3	C	490/527 (93%)	483 (99%)	7 (1%)	62	79
4	D	136/179 (76%)	134 (98%)	2 (2%)	60	78
5	E	481/897 (54%)	475 (99%)	6 (1%)	67	82
All	All	1987/2621 (76%)	1962 (99%)	25 (1%)	64	81

All (25) residues with a non-rotameric sidechain are listed below:

Mol	Chain	Res	Type
1	B	67	ASN
1	B	339	ASN
1	B	367	LEU
1	B	489	LEU
2	A	171	ASN
2	A	175	LEU
2	A	187	LEU
2	A	310	ASN

Continued on next page...

Continued from previous page...

Mol	Chain	Res	Type
2	A	333	ASN
2	A	474	GLN
3	C	67	ASN
3	C	146	ARG
3	C	158	TYR
3	C	199	ASN
3	C	232	ARG
3	C	291	ARG
3	C	394	ASN
4	D	101	ASN
4	D	139	ASN
5	E	93	LEU
5	E	143	ASN
5	E	177	ASN
5	E	379	ASN
5	E	429	LYS
5	E	455	ARG

Sometimes sidechains can be flipped to improve hydrogen bonding and reduce clashes. All (21) such sidechains are listed below:

Mol	Chain	Res	Type
1	B	67	ASN
1	B	235	GLN
1	B	339	ASN
1	B	543	ASN
2	A	23	HIS
2	A	171	ASN
2	A	310	ASN
2	A	333	ASN
3	C	67	ASN
3	C	82	GLN
3	C	199	ASN
3	C	394	ASN
3	C	543	ASN
4	D	101	ASN
5	E	143	ASN
5	E	177	ASN
5	E	191	ASN
5	E	267	HIS
5	E	379	ASN
5	E	408	ASN
5	E	492	ASN

5.3.3 RNA ⓘ

There are no RNA molecules in this entry.

5.4 Non-standard residues in protein, DNA, RNA chains ⓘ

There are no non-standard protein/DNA/RNA residues in this entry.

5.5 Carbohydrates ⓘ

There are no oligosaccharides in this entry.

5.6 Ligand geometry ⓘ

7 ligands are modelled in this entry.

In the following table, the Counts columns list the number of bonds (or angles) for which Mogul statistics could be retrieved, the number of bonds (or angles) that are observed in the model and the number of bonds (or angles) that are defined in the Chemical Component Dictionary. The Link column lists molecule types, if any, to which the group is linked. The Z score for a bond length (or angle) is the number of standard deviations the observed value is removed from the expected value. A bond length (or angle) with $|Z| > 2$ is considered an outlier worth inspection. RMSZ is the root-mean-square of all Z scores of the bond lengths (or angles).

Mol	Type	Chain	Res	Link	Bond lengths			Bond angles		
					Counts	RMSZ	$\# Z > 2$	Counts	RMSZ	$\# Z > 2$
10	THR	B	705	-	5,6,7	0.51	0	6,7,9	0.66	0
7	PHE	B	702	-	10,11,12	0.46	0	10,13,15	0.23	0
9	ARG	B	704	-	9,10,11	0.43	0	5,11,13	0.26	0
8	ASN	B	703	-	6,7,8	0.47	0	5,8,10	0.29	0
6	MET	B	701	-	3,4,8	0.64	0	2,4,9	0.88	0
11	GLN	B	707	-	7,8,9	0.43	0	4,9,11	0.04	0
10	THR	B	706	-	5,6,7	0.54	0	6,7,9	0.71	0

In the following table, the Chirals column lists the number of chiral outliers, the number of chiral centers analysed, the number of these observed in the model and the number defined in the Chemical Component Dictionary. Similar counts are reported in the Torsion and Rings columns. '-' means no outliers of that kind were identified.

Mol	Type	Chain	Res	Link	Chirals	Torsions	Rings
10	THR	B	705	-	-	0/5/6/8	-
7	PHE	B	702	-	-	0/5/6/8	0/1/1/1
9	ARG	B	704	-	-	1/8/9/11	-

Continued on next page...

Continued from previous page...

Mol	Type	Chain	Res	Link	Chirals	Torsions	Rings
8	ASN	B	703	-	-	0/5/6/8	-
6	MET	B	701	-	-	0/0/2/8	-
11	GLN	B	707	-	-	0/6/7/9	-
10	THR	B	706	-	-	1/5/6/8	-

There are no bond length outliers.

There are no bond angle outliers.

There are no chirality outliers.

All (2) torsion outliers are listed below:

Mol	Chain	Res	Type	Atoms
9	B	704	ARG	CA-CB-CG-CD
10	B	706	THR	O-C-CA-CB

There are no ring outliers.

No monomer is involved in short contacts.

5.7 Other polymers [i](#)

There are no such residues in this entry.

5.8 Polymer linkage issues [i](#)

There are no chain breaks in this entry.

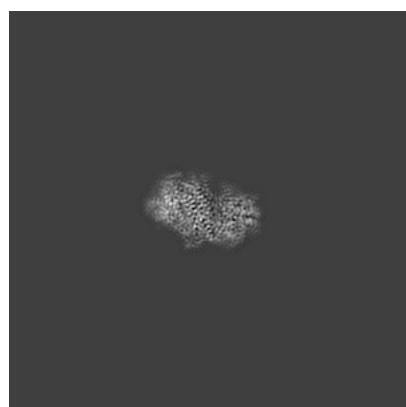
6 Map visualisation [i](#)

This section contains visualisations of the EMDB entry EMD-0095. These allow visual inspection of the internal detail of the map and identification of artifacts.

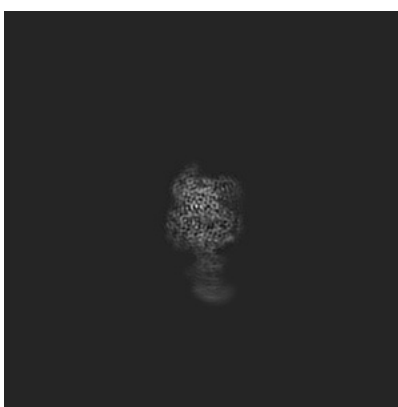
No raw map or half-maps were deposited for this entry and therefore no images, graphs, etc. pertaining to the raw map can be shown.

6.1 Orthogonal projections [i](#)

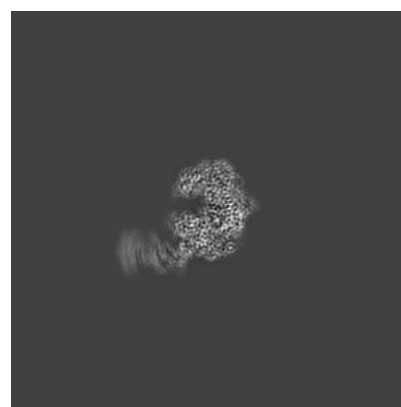
6.1.1 Primary map



X



Y

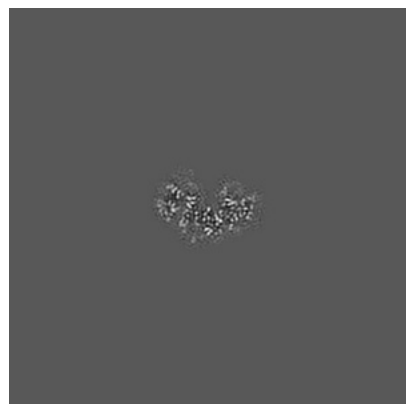


Z

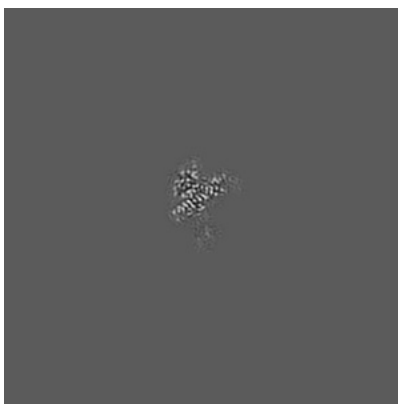
The images above show the map projected in three orthogonal directions.

6.2 Central slices [i](#)

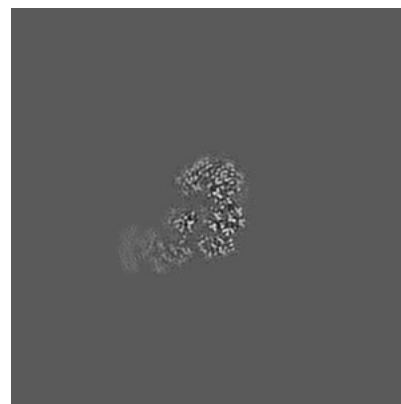
6.2.1 Primary map



X Index: 200



Y Index: 200

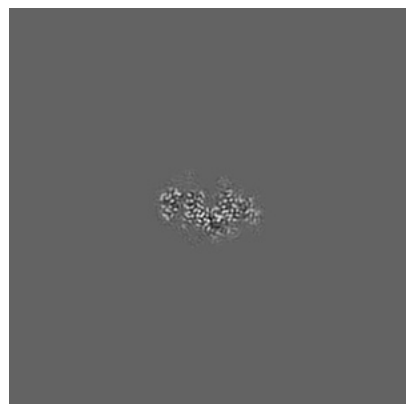


Z Index: 200

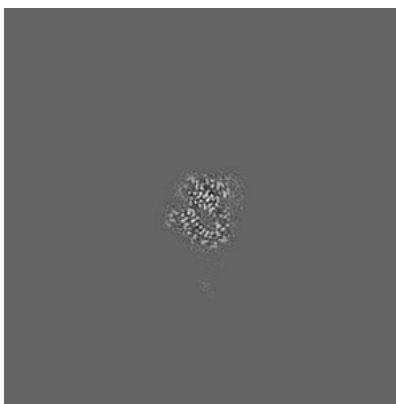
The images above show central slices of the map in three orthogonal directions.

6.3 Largest variance slices [i](#)

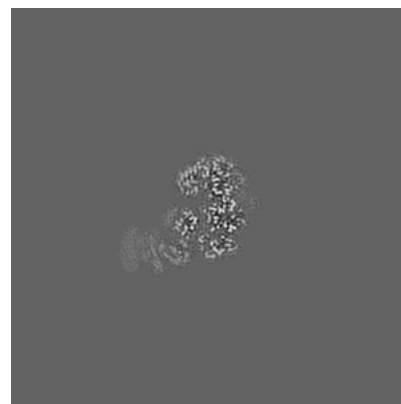
6.3.1 Primary map



X Index: 204



Y Index: 181

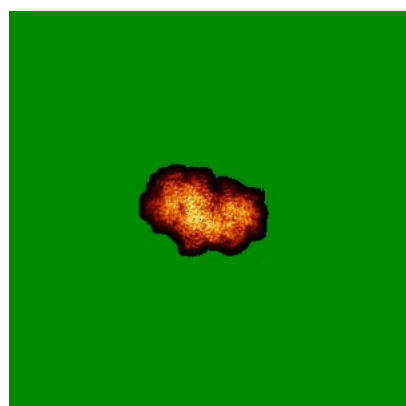


Z Index: 197

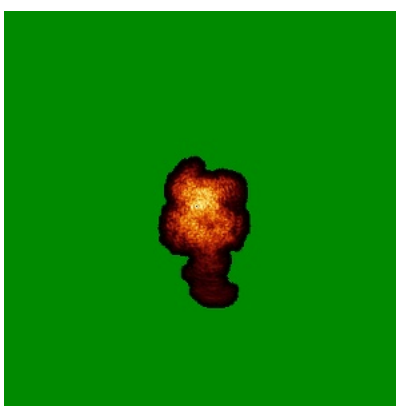
The images above show the largest variance slices of the map in three orthogonal directions.

6.4 Orthogonal standard-deviation projections (False-color) [i](#)

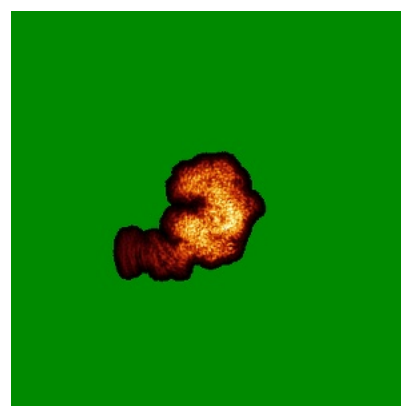
6.4.1 Primary map



X



Y

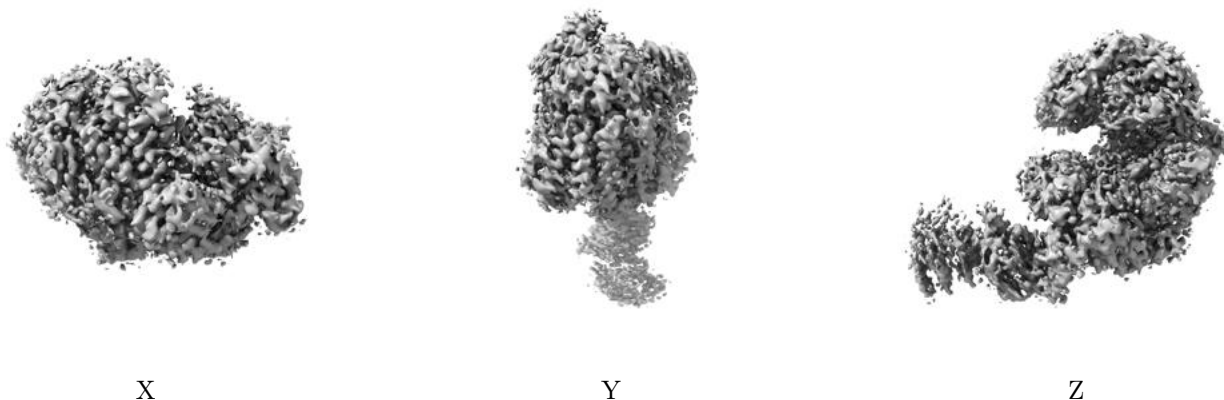


Z

The images above show the map standard deviation projections with false color in three orthogonal directions. Minimum values are shown in green, max in blue, and dark to light orange shades represent small to large values respectively.

6.5 Orthogonal surface views [i](#)

6.5.1 Primary map



The images above show the 3D surface view of the map at the recommended contour level 0.05. These images, in conjunction with the slice images, may facilitate assessment of whether an appropriate contour level has been provided.

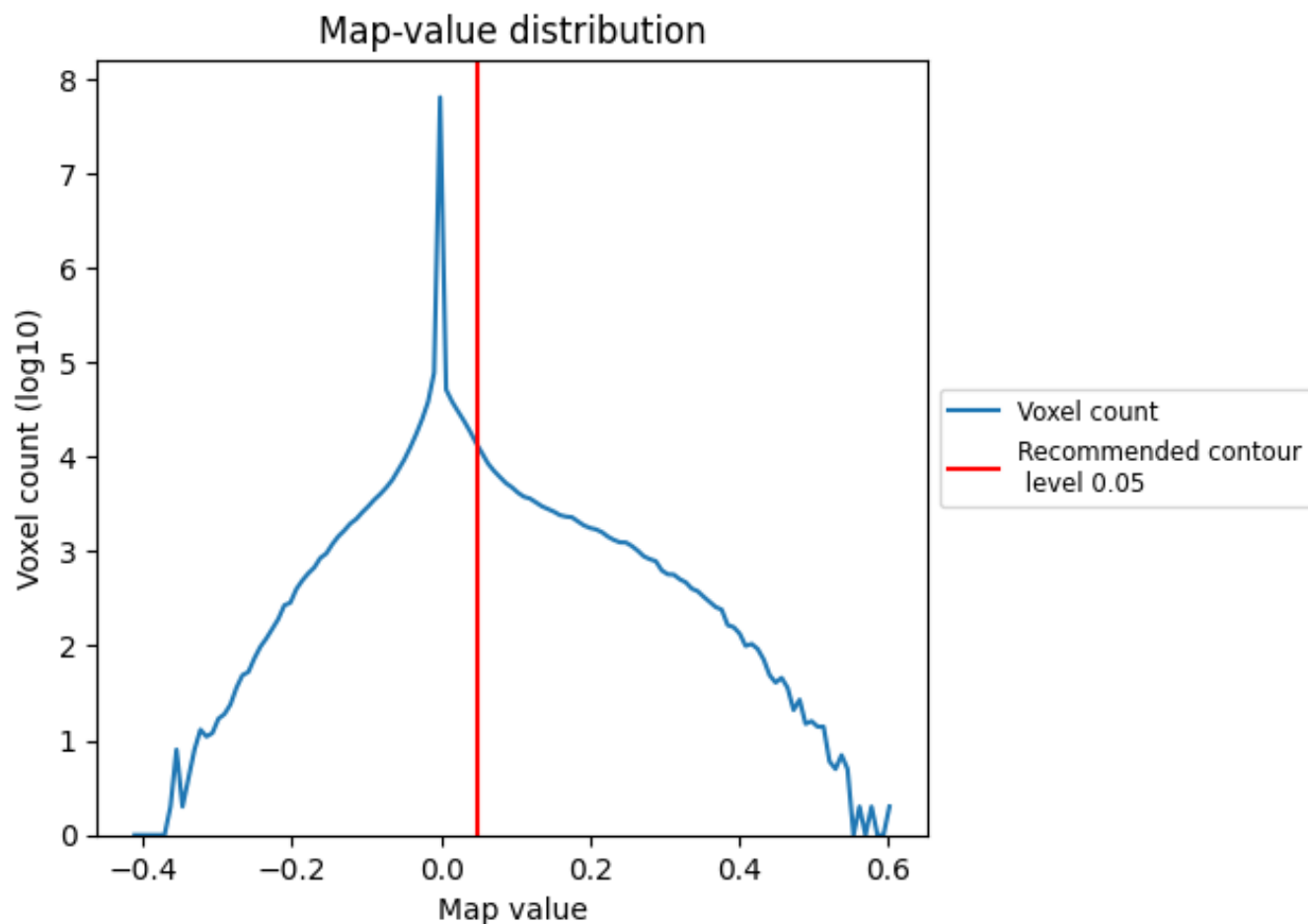
6.6 Mask visualisation [i](#)

This section was not generated. No masks/segmentation were deposited.

7 Map analysis [i](#)

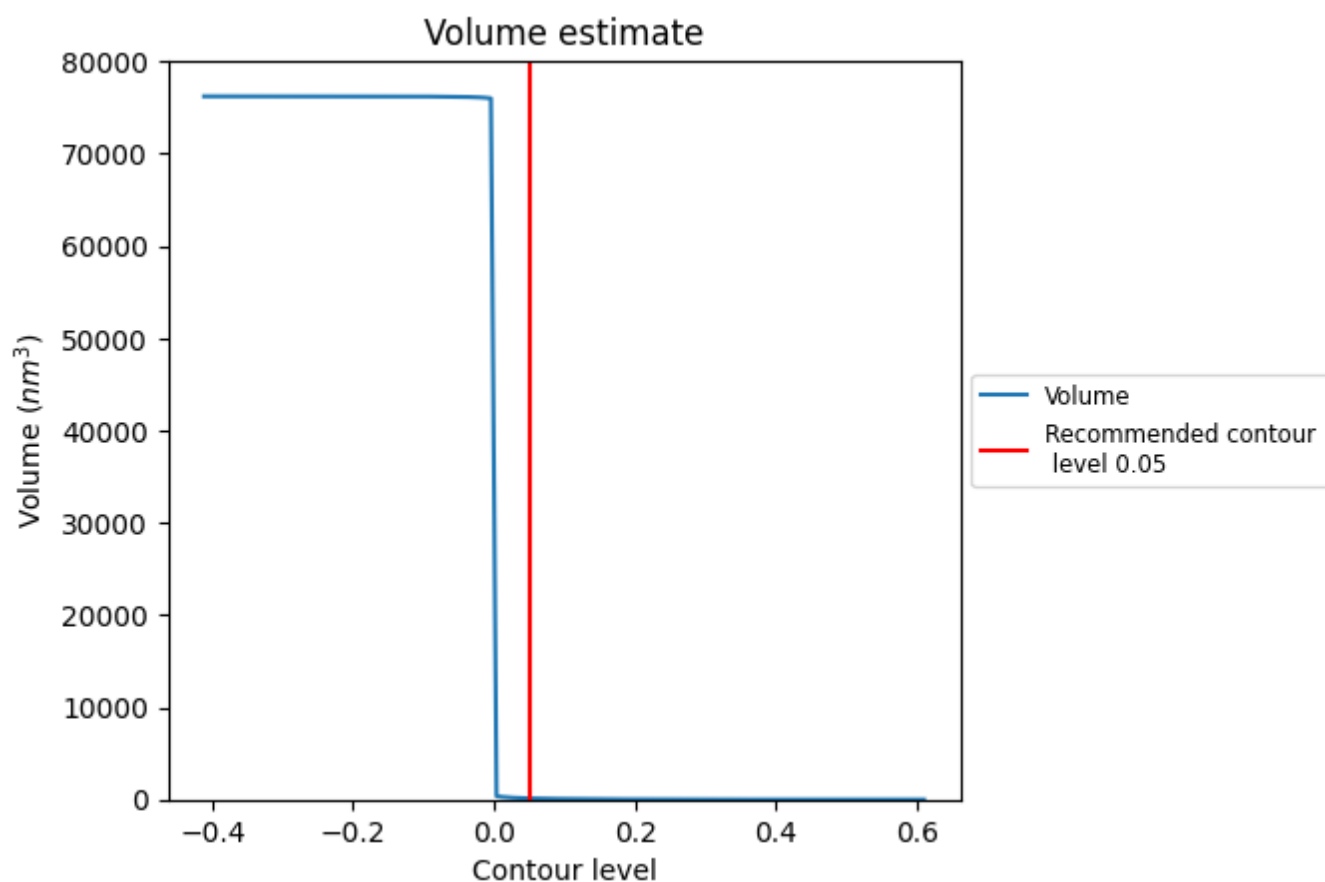
This section contains the results of statistical analysis of the map.

7.1 Map-value distribution [i](#)



The map-value distribution is plotted in 128 intervals along the x-axis. The y-axis is logarithmic. A spike in this graph at zero usually indicates that the volume has been masked.

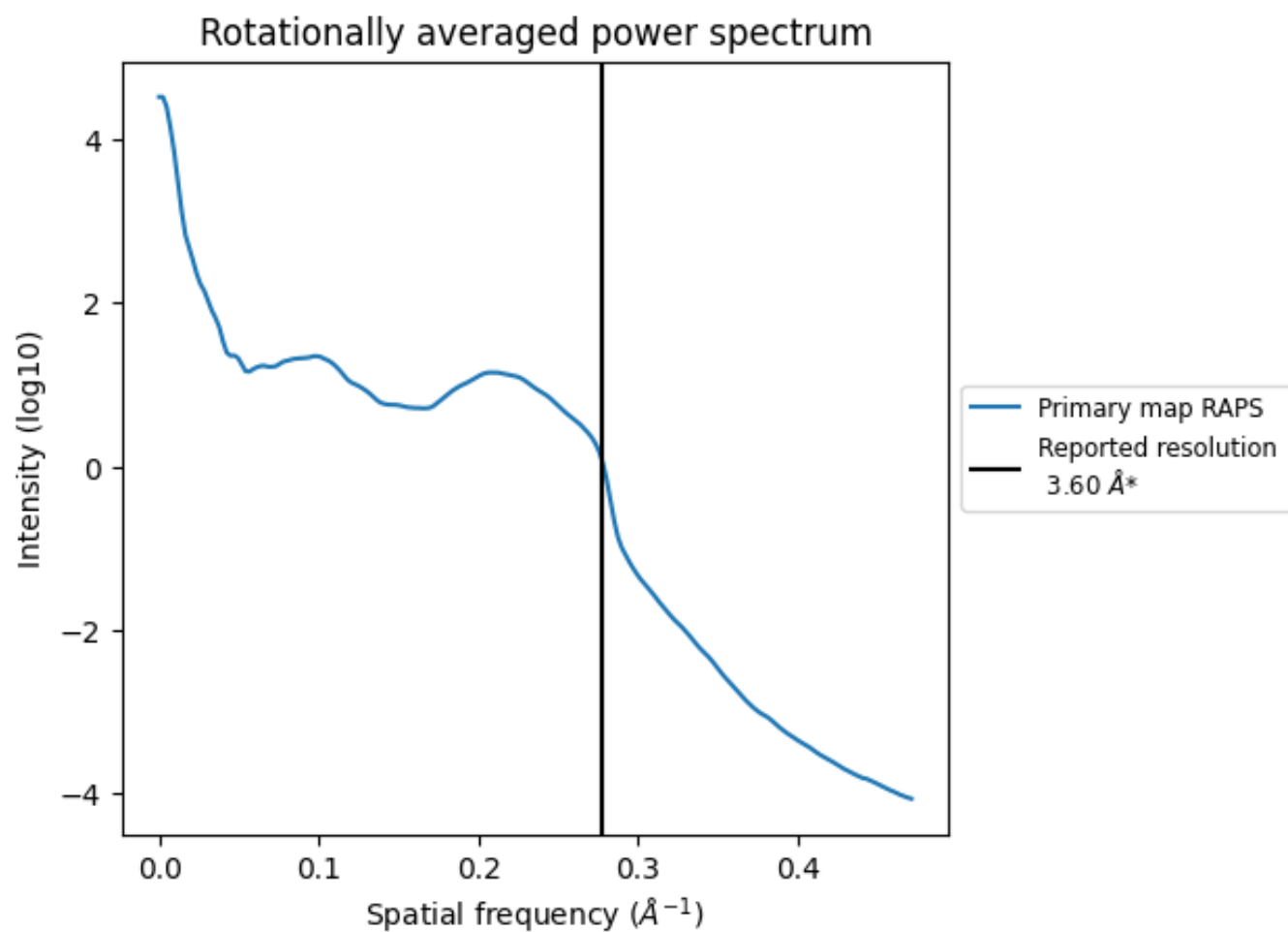
7.2 Volume estimate [i](#)



The volume at the recommended contour level is 127 nm³; this corresponds to an approximate mass of 114 kDa.

The volume estimate graph shows how the enclosed volume varies with the contour level. The recommended contour level is shown as a vertical line and the intersection between the line and the curve gives the volume of the enclosed surface at the given level.

7.3 Rotationally averaged power spectrum ⓘ



*Reported resolution corresponds to spatial frequency of 0.278 Å⁻¹

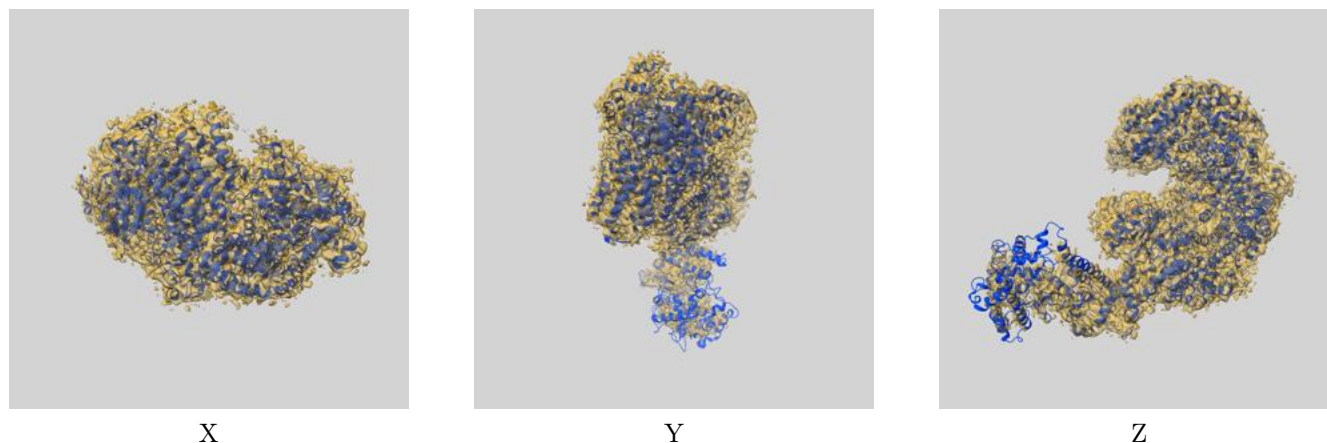
8 Fourier-Shell correlation

This section was not generated. No FSC curve or half-maps provided.

9 Map-model fit [i](#)

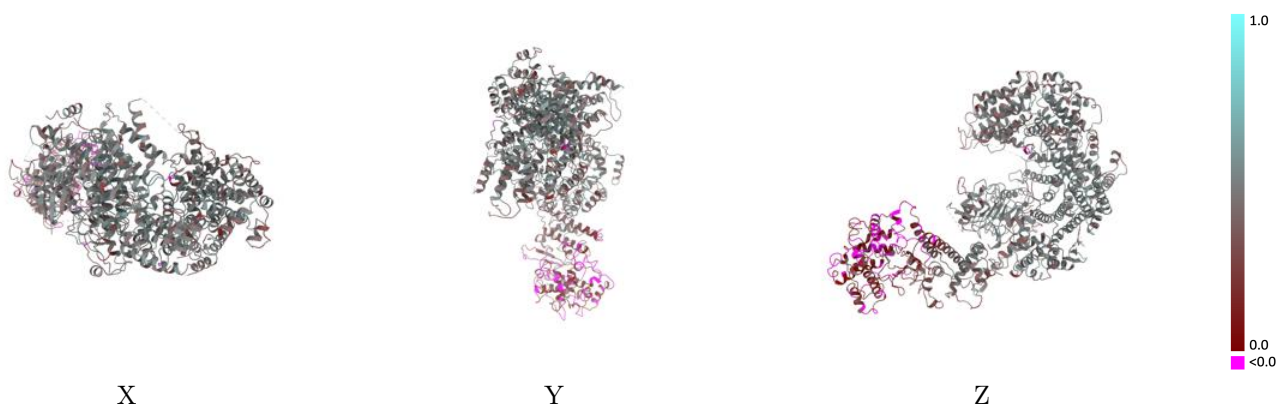
This section contains information regarding the fit between EMDB map EMD-0095 and PDB model 6GYP. Per-residue inclusion information can be found in section [3](#) on page [8](#).

9.1 Map-model overlay [i](#)



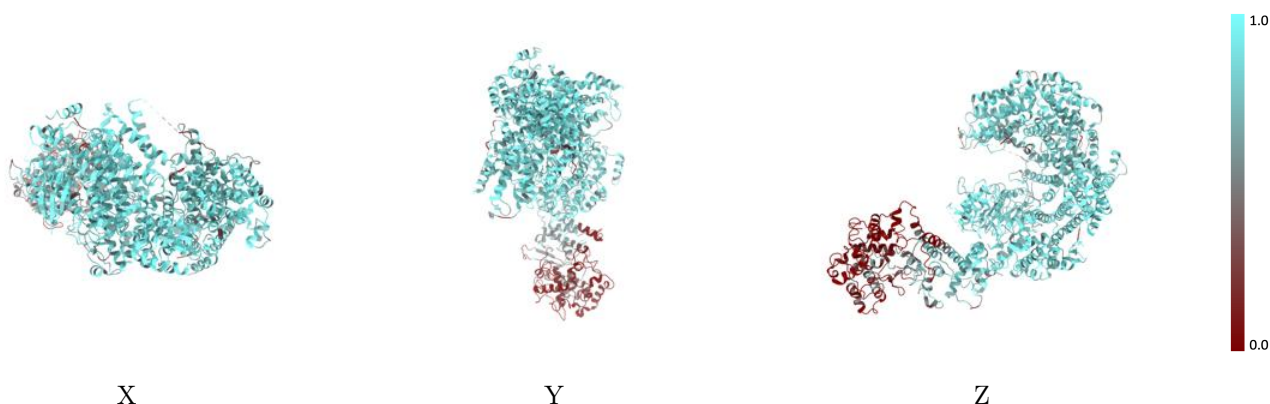
The images above show the 3D surface view of the map at the recommended contour level 0.05 at 50% transparency in yellow overlaid with a ribbon representation of the model coloured in blue. These images allow for the visual assessment of the quality of fit between the atomic model and the map.

9.2 Q-score mapped to coordinate model [i](#)



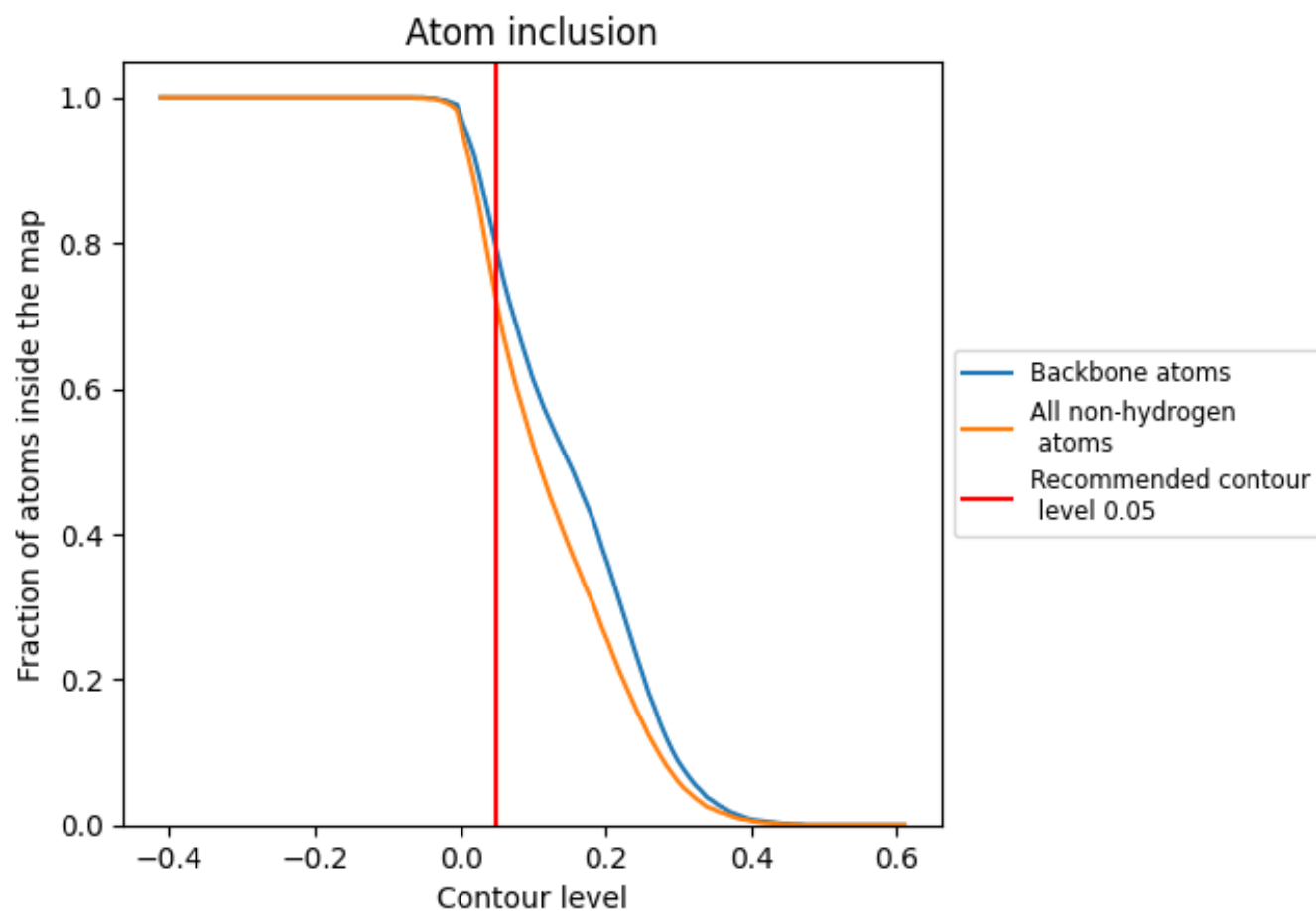
The images above show the model with each residue coloured according to its Q-score. This shows their resolvability in the map with higher Q-score values reflecting better resolvability. Please note: Q-score is calculating the resolvability of atoms, and thus high values are only expected at resolutions at which atoms can be resolved. Low Q-score values may therefore be expected for many entries.

9.3 Atom inclusion mapped to coordinate model [i](#)



The images above show the model with each residue coloured according to its atom inclusion. This shows to what extent they are inside the map at the recommended contour level (0.05).

9.4 Atom inclusion [i](#)



At the recommended contour level, 79% of all backbone atoms, 72% of all non-hydrogen atoms, are inside the map.

9.5 Map-model fit summary ⓘ

The table lists the average atom inclusion at the recommended contour level (0.05) and Q-score for the entire model and for each chain.

Chain	Atom inclusion	Q-score
All	<div></div> 0.7180	<div></div> 0.4020
A	<div></div> 0.8520	<div></div> 0.4640
B	<div></div> 0.8610	<div></div> 0.4850
C	<div></div> 0.8240	<div></div> 0.4520
D	<div></div> 0.8500	<div></div> 0.4650
E	<div></div> 0.3130	<div></div> 0.1940

