



# Full wwPDB X-ray Structure Validation Report ⓘ

Jun 19, 2024 – 05:32 AM EDT

PDB ID : 4H3G  
Title : Structure of BACE Bound to 2-((7aR)-7a-(4-(3-cyanophenyl)thiophen-2-yl)-2-imino-3-methyl-4-oxohexahydro-1H-pyrrolo[3,4-d]pyrimidin-6(2H)-yl)nicotinonitrile  
Authors : Strickland, C.; Mandal, M.  
Deposited on : 2012-09-13  
Resolution : 1.85 Å(reported)

This is a Full wwPDB X-ray Structure Validation Report for a publicly released PDB entry.

We welcome your comments at [validation@mail.wwpdb.org](mailto:validation@mail.wwpdb.org)

A user guide is available at

<https://www.wwpdb.org/validation/2017/XrayValidationReportHelp>

with specific help available everywhere you see the ⓘ symbol.

The types of validation reports are described at

<http://www.wwpdb.org/validation/2017/FAQs#types>.

---

The following versions of software and data (see [references ⓘ](#)) were used in the production of this report:

MolProbity	:	4.02b-467
Mogul	:	2022.3.0, CSD as543be (2022)
Xtriage (Phenix)	:	1.20.1
EDS	:	2.37.1
buster-report	:	1.1.7 (2018)
Percentile statistics	:	20191225.v01 (using entries in the PDB archive December 25th 2019)
Refmac	:	5.8.0158
CCP4	:	7.0.044 (Gargrove)
Ideal geometry (proteins)	:	Engh & Huber (2001)
Ideal geometry (DNA, RNA)	:	Parkinson et al. (1996)
Validation Pipeline (wwPDB-VP)	:	2.37.1

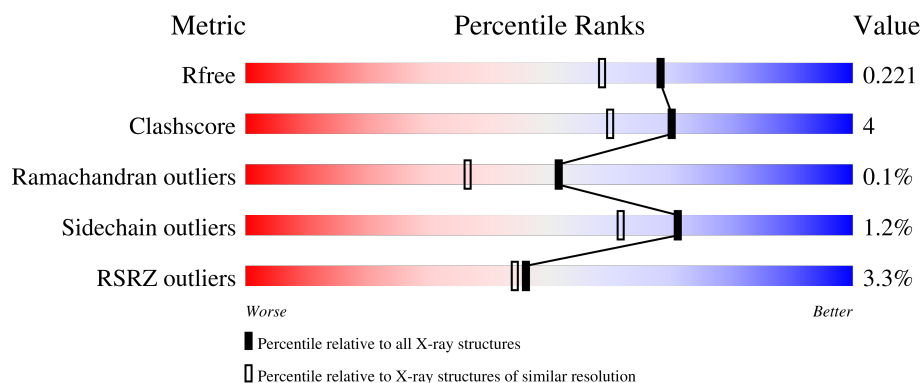
# 1 Overall quality at a glance

The following experimental techniques were used to determine the structure:

## *X-RAY DIFFRACTION*

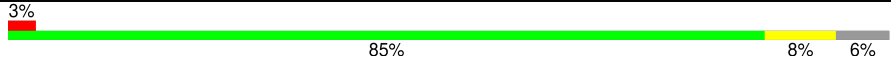

The reported resolution of this entry is 1.85 Å.

Percentile scores (ranging between 0-100) for global validation metrics of the entry are shown in the following graphic. The table shows the number of entries on which the scores are based.



Metric	Whole archive (#Entries)	Similar resolution (#Entries, resolution range(Å))
$R_{free}$	130704	2469 (1.86-1.86)
Clashscore	141614	2625 (1.86-1.86)
Ramachandran outliers	138981	2592 (1.86-1.86)
Sidechain outliers	138945	2592 (1.86-1.86)
RSRZ outliers	127900	2436 (1.86-1.86)

The table below summarises the geometric issues observed across the polymeric chains and their fit to the electron density. The red, orange, yellow and green segments of the lower bar indicate the fraction of residues that contain outliers for  $\geq 3$ , 2, 1 and 0 types of geometric quality criteria respectively. A grey segment represents the fraction of residues that are not modelled. The numeric value for each fraction is indicated below the corresponding segment, with a dot representing fractions  $\leq 5\%$ . The upper red bar (where present) indicates the fraction of residues that have poor fit to the electron density. The numeric value is given above the bar.

Mol	Chain	Length	Quality of chain
1	A	414	
1	B	414	

## 2 Entry composition [i](#)

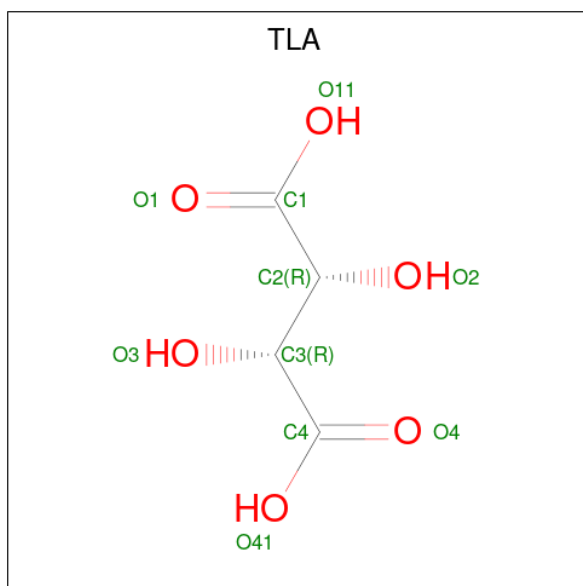
There are 4 unique types of molecules in this entry. The entry contains 7070 atoms, of which 0 are hydrogens and 0 are deuteriums.

In the tables below, the ZeroOcc column contains the number of atoms modelled with zero occupancy, the AltConf column contains the number of residues with at least one atom in alternate conformation and the Trace column contains the number of residues modelled with at most 2 atoms.

- Molecule 1 is a protein called Beta-secretase 1.

Mol	Chain	Residues	Atoms					ZeroOcc	AltConf	Trace
1	A	390	Total	C	N	O	S	0	0	0
			3060	1959	508	579	14			
1	B	389	Total	C	N	O	S	0	0	0
			3052	1953	507	578	14			

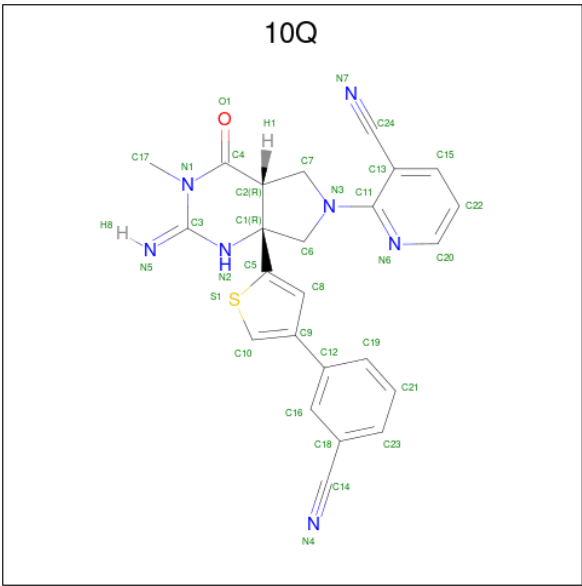
- Molecule 2 is L(+)-TARTARIC ACID (three-letter code: TLA) (formula: C<sub>4</sub>H<sub>6</sub>O<sub>6</sub>).



Mol	Chain	Residues	Atoms			ZeroOcc	AltConf
2	A	1	Total	C	O	0	0
			10	4	6		
2	B	1	Total	C	O	0	0
			10	4	6		
2	B	1	Total	C	O	0	0
			10	4	6		

- Molecule 3 is 2-[(2E,4aR,7aR)-7a-[4-(3-cyanophenyl)thiophen-2-yl]-2-imino-3-methyl-4-oxo octahydro-6H-pyrrolo[3,4-d]pyrimidin-6-yl]pyridine-3-carbonitrile (three-letter code: 10Q)

(formula: C<sub>24</sub>H<sub>19</sub>N<sub>7</sub>OS).



Mol	Chain	Residues	Atoms					ZeroOcc	AltConf
3	A	1	Total	C	N	O	S	0	0
			33	24	7	1	1		
3	B	1	Total	C	N	O	S	0	0
			33	24	7	1	1		

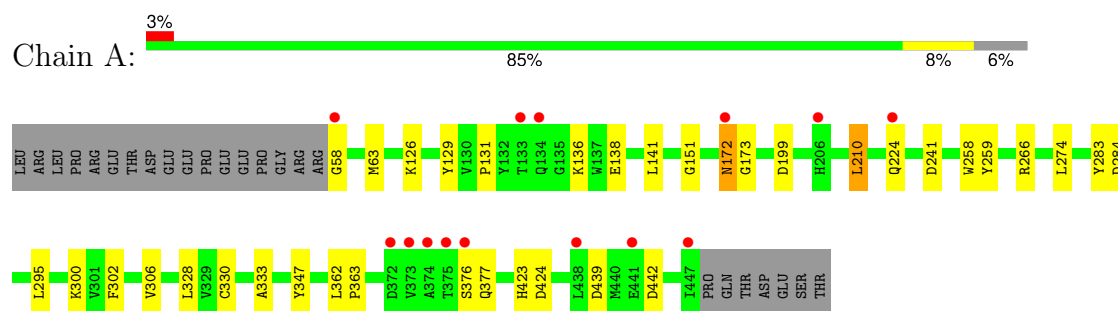
- Molecule 4 is water.

Mol	Chain	Residues	Atoms		ZeroOcc	AltConf
4	A	450	Total	O	0	0
			450	450		
4	B	412	Total	O	0	0
			412	412		

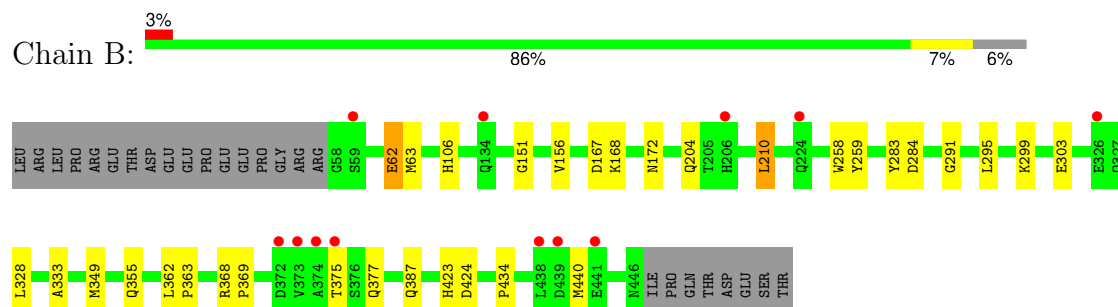
### 3 Residue-property plots [i](#)

These plots are drawn for all protein, RNA, DNA and oligosaccharide chains in the entry. The first graphic for a chain summarises the proportions of the various outlier classes displayed in the second graphic. The second graphic shows the sequence view annotated by issues in geometry and electron density. Residues are color-coded according to the number of geometric quality criteria for which they contain at least one outlier: green = 0, yellow = 1, orange = 2 and red = 3 or more. A red dot above a residue indicates a poor fit to the electron density ( $RSRZ > 2$ ). Stretches of 2 or more consecutive residues without any outlier are shown as a green connector. Residues present in the sample, but not in the model, are shown in grey.

#### • Molecule 1: Beta-secretase 1



#### • Molecule 1: Beta-secretase 1



## 4 Data and refinement statistics

Property	Value	Source
Space group	P 21 21 21	Depositor
Cell constants a, b, c, $\alpha$ , $\beta$ , $\gamma$	86.39Å 90.03Å 131.56Å 90.00° 90.00° 90.00°	Depositor
Resolution (Å)	19.81 – 1.85 19.81 – 1.85	Depositor EDS
% Data completeness (in resolution range)	98.1 (19.81-1.85) 98.6 (19.81-1.85)	Depositor EDS
$R_{merge}$	0.08	Depositor
$R_{sym}$	(Not available)	Depositor
$\langle I/\sigma(I) \rangle$ <sup>1</sup>	1.46 (at 1.85Å)	Xtriage
Refinement program	CNS	Depositor
R, $R_{free}$	0.193 , 0.228 0.188 , 0.221	Depositor DCC
$R_{free}$ test set	4332 reflections (5.01%)	wwPDB-VP
Wilson B-factor (Å <sup>2</sup> )	18.4	Xtriage
Anisotropy	0.613	Xtriage
Bulk solvent $k_{sol}$ (e/Å <sup>3</sup> ), $B_{sol}$ (Å <sup>2</sup> )	0.35 , 56.2	EDS
L-test for twinning <sup>2</sup>	$\langle  L  \rangle = 0.50$ , $\langle L^2 \rangle = 0.33$	Xtriage
Estimated twinning fraction	0.000 for k,h,-l	Xtriage
$F_o, F_c$ correlation	0.96	EDS
Total number of atoms	7070	wwPDB-VP
Average B, all atoms (Å <sup>2</sup> )	23.0	wwPDB-VP

Xtriage's analysis on translational NCS is as follows: *The analyses of the Patterson function reveals a significant off-origin peak that is 45.39 % of the origin peak, indicating pseudo-translational symmetry. The chance of finding a peak of this or larger height randomly in a structure without pseudo-translational symmetry is equal to 1.3303e-04. The detected translational NCS is most likely also responsible for the elevated intensity ratio.*

<sup>1</sup>Intensities estimated from amplitudes.

<sup>2</sup>Theoretical values of  $\langle |L| \rangle$ ,  $\langle L^2 \rangle$  for acentric reflections are 0.5, 0.333 respectively for untwinned datasets, and 0.375, 0.2 for perfectly twinned datasets.

## 5 Model quality [i](#)

### 5.1 Standard geometry [i](#)

Bond lengths and bond angles in the following residue types are not validated in this section: 10Q, TLA

The Z score for a bond length (or angle) is the number of standard deviations the observed value is removed from the expected value. A bond length (or angle) with  $|Z| > 5$  is considered an outlier worth inspection. RMSZ is the root-mean-square of all Z scores of the bond lengths (or angles).

Mol	Chain	Bond lengths		Bond angles	
		RMSZ	$\# Z  > 5$	RMSZ	$\# Z  > 5$
1	A	0.41	0/3138	0.67	2/4267 (0.0%)
1	B	0.40	0/3130	0.67	2/4256 (0.0%)
All	All	0.40	0/6268	0.67	4/8523 (0.0%)

There are no bond length outliers.

All (4) bond angle outliers are listed below:

Mol	Chain	Res	Type	Atoms	Z	Observed(°)	Ideal(°)
1	B	295	LEU	N-CA-C	-5.86	95.17	111.00
1	A	295	LEU	N-CA-C	-5.72	95.56	111.00
1	B	259	TYR	N-CA-C	-5.27	96.76	111.00
1	A	259	TYR	N-CA-C	-5.12	97.18	111.00

There are no chirality outliers.

There are no planarity outliers.

### 5.2 Too-close contacts [i](#)

In the following table, the Non-H and H(model) columns list the number of non-hydrogen atoms and hydrogen atoms in the chain respectively. The H(added) column lists the number of hydrogen atoms added and optimized by MolProbity. The Clashes column lists the number of clashes within the asymmetric unit, whereas Symm-Clashes lists symmetry-related clashes.

Mol	Chain	Non-H	H(model)	H(added)	Clashes	Symm-Clashes
1	A	3060	0	2970	24	0
1	B	3052	0	2959	21	0
2	A	10	0	4	0	0
2	B	20	0	8	1	0
3	A	33	0	18	0	0

*Continued on next page...*

*Continued from previous page...*

Mol	Chain	Non-H	H(model)	H(added)	Clashes	Symm-Clashes
3	B	33	0	18	1	0
4	A	450	0	0	3	0
4	B	412	0	0	0	0
All	All	7070	0	5977	44	0

The all-atom clashscore is defined as the number of clashes found per 1000 atoms (including hydrogen atoms). The all-atom clashscore for this structure is 4.

All (44) close contacts within the same asymmetric unit are listed below, sorted by their clash magnitude.

Atom-1	Atom-2	Interatomic distance (Å)	Clash overlap (Å)
1:A:63:MET:HG2	1:A:151:GLY:HA2	1.64	0.78
1:B:167:ASP:OD1	1:B:168:LYS:HG2	1.92	0.70
1:A:58:GLY:HA3	4:A:744:HOH:O	1.96	0.64
1:A:129:TYR:HD1	1:A:138:GLU:HG2	1.63	0.64
1:B:106:HIS:HE2	2:B:501:TLA:C4	2.10	0.64
1:A:224:GLN:HG3	4:A:938:HOH:O	2.04	0.57
1:A:63:MET:CG	1:A:151:GLY:HA2	2.35	0.56
1:A:210:LEU:C	1:A:210:LEU:HD23	2.29	0.53
1:B:62:GLU:H	1:B:62:GLU:CD	2.13	0.52
1:A:172:ASN:HD22	1:A:173:GLY:N	2.08	0.52
1:A:129:TYR:CD1	1:A:138:GLU:HG2	2.43	0.51
1:B:210:LEU:C	1:B:210:LEU:HD23	2.31	0.51
1:B:156:VAL:HG13	1:B:204:GLN:OE1	2.11	0.51
1:B:375:THR:HG22	1:B:375:THR:O	2.11	0.49
1:B:63:MET:HG2	1:B:151:GLY:HA2	1.95	0.48
1:A:333:ALA:HB2	1:A:377:GLN:O	2.15	0.47
1:B:299:LYS:O	1:B:303:GLU:HG3	2.15	0.46
1:A:439:ASP:HB3	1:A:442:ASP:OD2	2.15	0.46
1:A:300:LYS:NZ	1:B:168:LYS:HE2	2.30	0.46
1:B:328:LEU:HD12	1:B:328:LEU:O	2.16	0.46
1:A:126:LYS:HE2	4:A:871:HOH:O	2.16	0.46
1:B:328:LEU:HD12	1:B:328:LEU:C	2.36	0.45
1:B:156:VAL:HG13	1:B:204:GLN:CD	2.37	0.45
1:B:299:LYS:HA	1:B:387:GLN:HG3	1.98	0.45
1:B:349:MET:HE2	1:B:440:MET:HB3	1.99	0.44
1:A:274:LEU:HD12	1:A:274:LEU:HA	1.88	0.44
1:B:362:LEU:HB3	1:B:363:PRO:HD2	1.99	0.43
1:A:131:PRO:HA	1:A:136:LYS:HB3	2.00	0.43
1:A:131:PRO:HA	1:A:136:LYS:CB	2.49	0.43
1:A:362:LEU:HB3	1:A:363:PRO:HD2	2.00	0.43

*Continued on next page...*



Continued from previous page...

Atom-1	Atom-2	Interatomic distance (Å)	Clash overlap (Å)
1:B:283:TYR:HA	1:B:284:ASP:HA	1.67	0.43
1:A:283:TYR:HA	1:A:284:ASP:HA	1.69	0.42
1:B:368:ARG:HA	1:B:369:PRO:HD3	1.92	0.41
1:A:58:GLY:HA2	1:A:241:ASP:OD2	2.20	0.41
1:A:126:LYS:HD2	1:A:141:LEU:HD12	2.02	0.41
1:B:291:GLY:O	3:B:503:10Q:H11	2.20	0.41
1:A:266:ARG:HB3	1:A:347:TYR:HB2	2.01	0.41
1:A:328:LEU:HD13	1:A:330:CYS:SG	2.60	0.41
1:B:333:ALA:HB2	1:B:377:GLN:O	2.20	0.41
1:A:302:PHE:CZ	1:A:306:VAL:HG21	2.56	0.41
1:A:423:HIS:HD2	1:A:424:ASP:O	2.03	0.41
1:A:58:GLY:HA2	1:A:241:ASP:CG	2.41	0.41
1:B:355:GLN:CG	1:B:434:PRO:HB2	2.52	0.40
1:B:423:HIS:HD2	1:B:424:ASP:O	2.04	0.40

There are no symmetry-related clashes.

## 5.3 Torsion angles

### 5.3.1 Protein backbone

In the following table, the Percentiles column shows the percent Ramachandran outliers of the chain as a percentile score with respect to all X-ray entries followed by that with respect to entries of similar resolution.

The Analysed column shows the number of residues for which the backbone conformation was analysed, and the total number of residues.

Mol	Chain	Analysed	Favoured	Allowed	Outliers	Percentiles	
1	A	388/414 (94%)	377 (97%)	10 (3%)	1 (0%)	41	26
1	B	387/414 (94%)	379 (98%)	8 (2%)	0	100	100
All	All	775/828 (94%)	756 (98%)	18 (2%)	1 (0%)	51	36

All (1) Ramachandran outliers are listed below:

Mol	Chain	Res	Type
1	A	376	SER

### 5.3.2 Protein sidechains ⓘ

In the following table, the Percentiles column shows the percent sidechain outliers of the chain as a percentile score with respect to all X-ray entries followed by that with respect to entries of similar resolution.

The Analysed column shows the number of residues for which the sidechain conformation was analysed, and the total number of residues.

Mol	Chain	Analysed	Rotameric	Outliers	Percentiles	
1	A	332/355 (94%)	328 (99%)	4 (1%)	71	62
1	B	331/355 (93%)	327 (99%)	4 (1%)	71	62
All	All	663/710 (93%)	655 (99%)	8 (1%)	71	62

All (8) residues with a non-rotameric sidechain are listed below:

Mol	Chain	Res	Type
1	A	172	ASN
1	A	199	ASP
1	A	210	LEU
1	A	258	TRP
1	B	62	GLU
1	B	172	ASN
1	B	210	LEU
1	B	258	TRP

Sometimes sidechains can be flipped to improve hydrogen bonding and reduce clashes. All (7) such sidechains are listed below:

Mol	Chain	Res	Type
1	A	172	ASN
1	A	423	HIS
1	B	89	ASN
1	B	172	ASN
1	B	327	GLN
1	B	332	GLN
1	B	423	HIS

### 5.3.3 RNA ⓘ

There are no RNA molecules in this entry.

## 5.4 Non-standard residues in protein, DNA, RNA chains [i](#)

There are no non-standard protein/DNA/RNA residues in this entry.

## 5.5 Carbohydrates [i](#)

There are no monosaccharides in this entry.

## 5.6 Ligand geometry [i](#)

5 ligands are modelled in this entry.

In the following table, the Counts columns list the number of bonds (or angles) for which Mogul statistics could be retrieved, the number of bonds (or angles) that are observed in the model and the number of bonds (or angles) that are defined in the Chemical Component Dictionary. The Link column lists molecule types, if any, to which the group is linked. The Z score for a bond length (or angle) is the number of standard deviations the observed value is removed from the expected value. A bond length (or angle) with  $|Z| > 2$  is considered an outlier worth inspection. RMSZ is the root-mean-square of all Z scores of the bond lengths (or angles).

Mol	Type	Chain	Res	Link	Bond lengths			Bond angles		
					Counts	RMSZ	# Z  > 2	Counts	RMSZ	# Z  > 2
2	TLA	A	501	-	9,9,9	1.15	2 (22%)	12,12,12	0.98	0
3	10Q	B	503	-	33,37,37	2.03	6 (18%)	31,55,55	1.22	4 (12%)
2	TLA	B	501	-	9,9,9	1.12	2 (22%)	12,12,12	1.03	1 (8%)
2	TLA	B	502	-	9,9,9	1.15	2 (22%)	12,12,12	0.99	0
3	10Q	A	502	-	33,37,37	2.06	5 (15%)	31,55,55	1.25	3 (9%)

In the following table, the Chirals column lists the number of chiral outliers, the number of chiral centers analysed, the number of these observed in the model and the number defined in the Chemical Component Dictionary. Similar counts are reported in the Torsion and Rings columns. '-' means no outliers of that kind were identified.

Mol	Type	Chain	Res	Link	Chirals	Torsions	Rings
2	TLA	A	501	-	-	0/12/12/12	-
3	10Q	B	503	-	-	2/11/50/50	0/5/5/5
2	TLA	B	501	-	-	2/12/12/12	-
2	TLA	B	502	-	-	0/12/12/12	-
3	10Q	A	502	-	-	2/11/50/50	0/5/5/5

All (17) bond length outliers are listed below:

Mol	Chain	Res	Type	Atoms	Z	Observed(Å)	Ideal(Å)
3	A	502	10Q	C10-C9	8.52	1.42	1.37
3	B	503	10Q	C10-C9	7.90	1.41	1.37
3	B	503	10Q	C2-C4	3.29	1.56	1.51
3	A	502	10Q	C3-N2	3.01	1.37	1.34
3	B	503	10Q	C8-C5	2.86	1.45	1.37
3	A	502	10Q	C8-C5	2.73	1.44	1.37
3	A	502	10Q	C2-C4	2.64	1.55	1.51
3	B	503	10Q	C3-N2	2.58	1.37	1.34
3	A	502	10Q	C1-N2	2.29	1.48	1.45
2	A	501	TLA	O11-C1	-2.23	1.23	1.30
2	B	502	TLA	O41-C4	-2.22	1.23	1.30
2	B	501	TLA	O11-C1	-2.20	1.23	1.30
3	B	503	10Q	C5-S1	-2.19	1.70	1.74
2	A	501	TLA	O41-C4	-2.18	1.23	1.30
2	B	502	TLA	O11-C1	-2.18	1.23	1.30
3	B	503	10Q	C21-C19	2.02	1.42	1.38
2	B	501	TLA	O41-C4	-2.01	1.24	1.30

All (8) bond angle outliers are listed below:

Mol	Chain	Res	Type	Atoms	Z	Observed(°)	Ideal(°)
3	A	502	10Q	C8-C9-C12	-4.21	122.44	126.32
3	B	503	10Q	C8-C9-C12	-3.96	122.67	126.32
3	A	502	10Q	C20-N6-C11	2.52	120.76	115.05
3	B	503	10Q	C20-N6-C11	2.47	120.65	115.05
3	B	503	10Q	C17-N1-C3	-2.28	118.67	120.77
3	A	502	10Q	C17-N1-C3	-2.15	118.80	120.77
3	B	503	10Q	C9-C10-S1	-2.03	110.98	112.29
2	B	501	TLA	O41-C4-C3	2.02	118.93	113.31

There are no chirality outliers.

All (6) torsion outliers are listed below:

Mol	Chain	Res	Type	Atoms
3	A	502	10Q	C13-C11-N3-C7
3	A	502	10Q	N6-C11-N3-C7
3	B	503	10Q	C13-C11-N3-C7
3	B	503	10Q	N6-C11-N3-C7
2	B	501	TLA	C2-C3-C4-O4
2	B	501	TLA	C2-C3-C4-O41

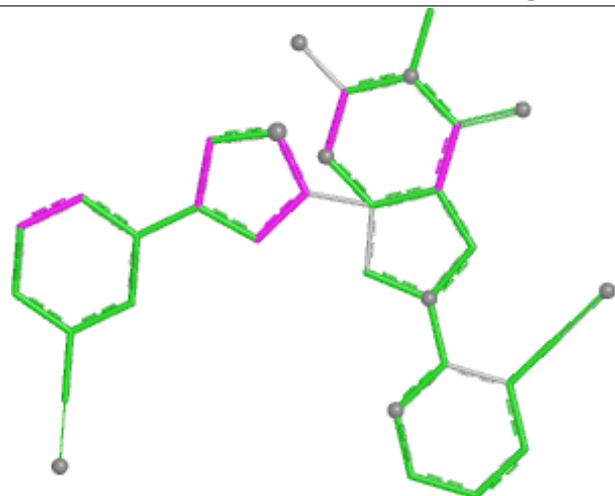
There are no ring outliers.

2 monomers are involved in 2 short contacts:

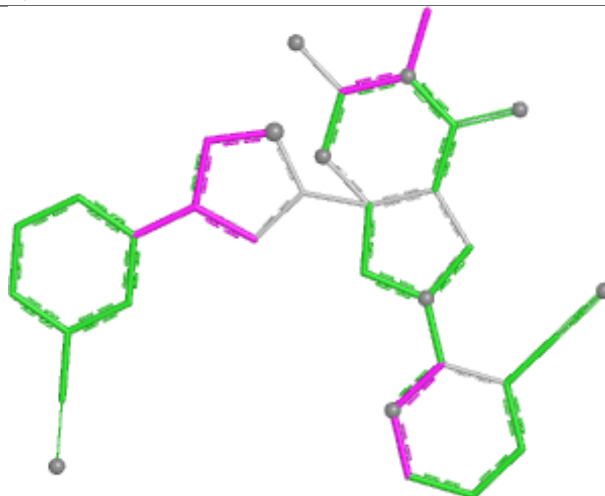
Mol	Chain	Res	Type	Clashes	Symm-Clashes
3	B	503	10Q	1	0
2	B	501	TLA	1	0

The following is a two-dimensional graphical depiction of Mogul quality analysis of bond lengths, bond angles, torsion angles, and ring geometry for all instances of the Ligand of Interest. In addition, ligands with molecular weight > 250 and outliers as shown on the validation Tables will also be included. For torsion angles, if less than 5% of the Mogul distribution of torsion angles is within 10 degrees of the torsion angle in question, then that torsion angle is considered an outlier. Any bond that is central to one or more torsion angles identified as an outlier by Mogul will be highlighted in the graph. For rings, the root-mean-square deviation (RMSD) between the ring in question and similar rings identified by Mogul is calculated over all ring torsion angles. If the average RMSD is greater than 60 degrees and the minimal RMSD between the ring in question and any Mogul-identified rings is also greater than 60 degrees, then that ring is considered an outlier. The outliers are highlighted in purple. The color gray indicates Mogul did not find sufficient equivalents in the CSD to analyse the geometry.

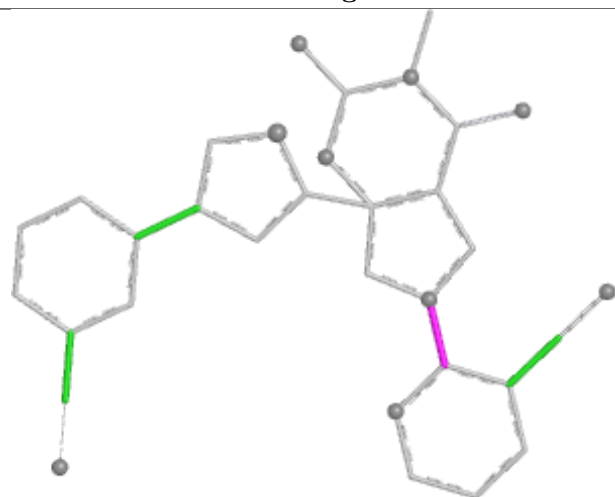
## Ligand 10Q B 503



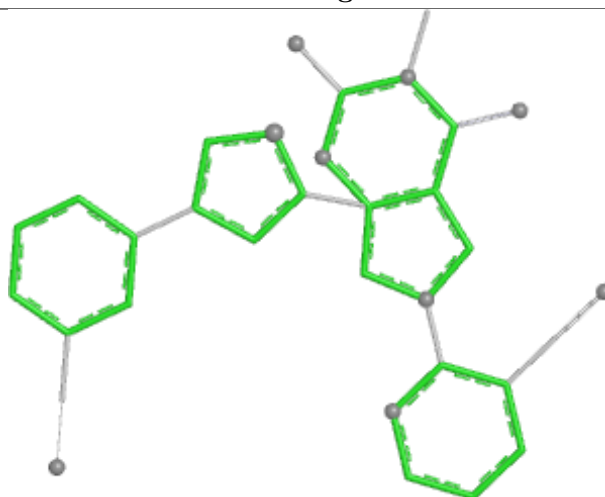
Bond lengths



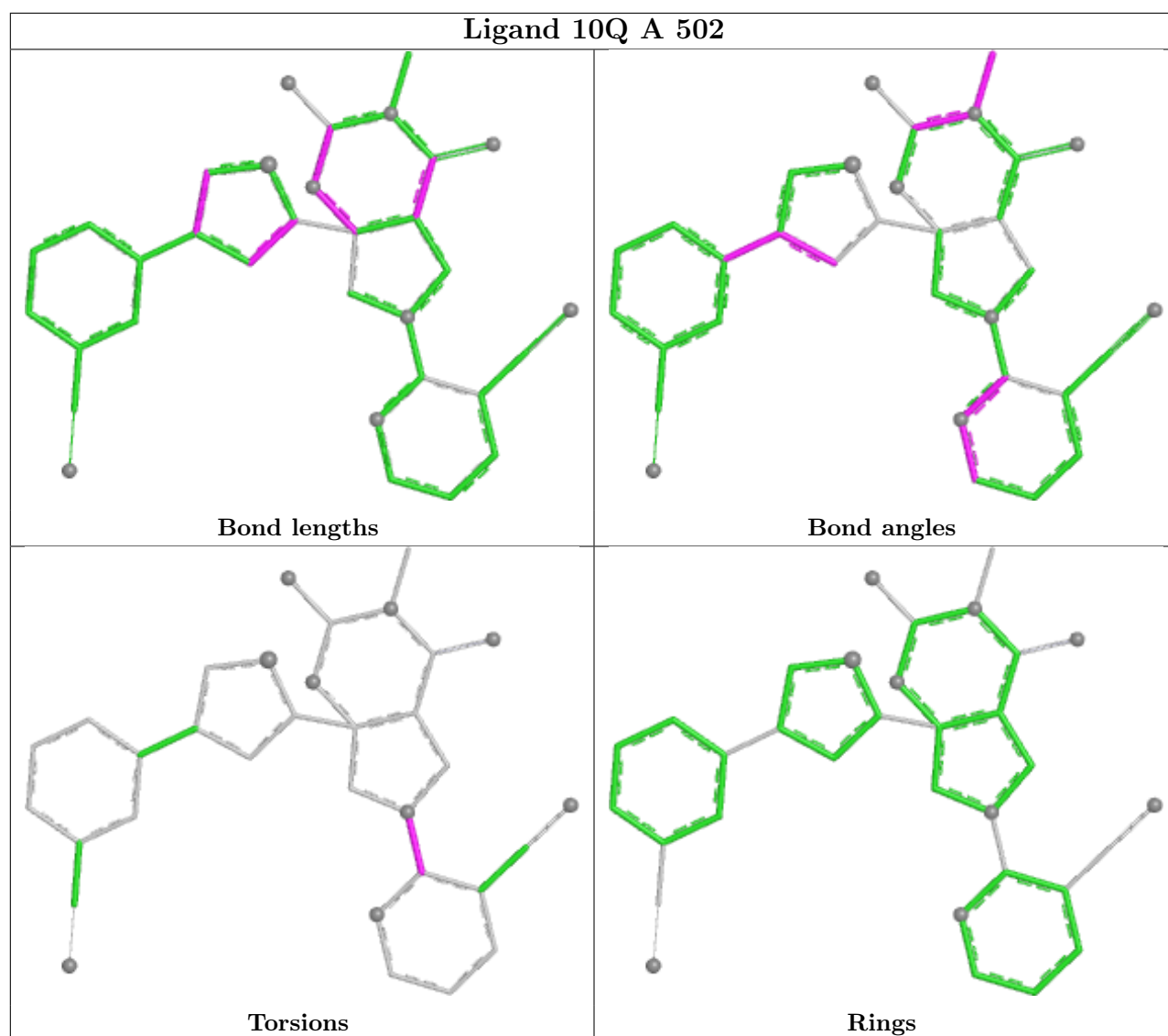
Bond angles



Torsions



Rings



## 5.7 Other polymers [i](#)

There are no such residues in this entry.

## 5.8 Polymer linkage issues [i](#)

There are no chain breaks in this entry.

## 6 Fit of model and data

### 6.1 Protein, DNA and RNA chains

In the following table, the column labelled ‘#RSRZ > 2’ contains the number (and percentage) of RSRZ outliers, followed by percent RSRZ outliers for the chain as percentile scores relative to all X-ray entries and entries of similar resolution. The OWAB column contains the minimum, median, 95<sup>th</sup> percentile and maximum values of the occupancy-weighted average B-factor per residue. The column labelled ‘Q < 0.9’ lists the number of (and percentage) of residues with an average occupancy less than 0.9.

Mol	Chain	Analysed	<RSRZ>	#RSRZ>2	OWAB(Å <sup>2</sup> )	Q<0.9
1	A	390/414 (94%)	-0.10	14 (3%) 42 40	11, 19, 40, 73	0
1	B	389/414 (93%)	-0.15	12 (3%) 49 47	11, 20, 38, 66	0
All	All	779/828 (94%)	-0.12	26 (3%) 46 44	11, 20, 40, 73	0

All (26) RSRZ outliers are listed below:

Mol	Chain	Res	Type	RSRZ
1	A	373	VAL	9.9
1	B	373	VAL	8.7
1	B	375	THR	7.5
1	A	375	THR	6.6
1	A	134	GLN	4.9
1	A	58	GLY	4.3
1	A	374	ALA	4.2
1	A	447	ILE	4.0
1	B	134	GLN	4.0
1	B	441	GLU	3.9
1	A	224	GLN	3.9
1	B	374	ALA	3.8
1	B	59	SER	3.7
1	B	224	GLN	3.7
1	A	133	THR	3.6
1	A	376	SER	2.9
1	A	441	GLU	2.8
1	A	206	HIS	2.7
1	B	438	LEU	2.5
1	A	172	ASN	2.4
1	B	206	HIS	2.3
1	B	372	ASP	2.2
1	B	439	ASP	2.1
1	A	372	ASP	2.1

*Continued on next page...*



*Continued from previous page...*

Mol	Chain	Res	Type	RSRZ
1	A	438	LEU	2.1
1	B	326	GLU	2.0

## 6.2 Non-standard residues in protein, DNA, RNA chains [i](#)

There are no non-standard protein/DNA/RNA residues in this entry.

## 6.3 Carbohydrates [i](#)

There are no monosaccharides in this entry.

## 6.4 Ligands [i](#)

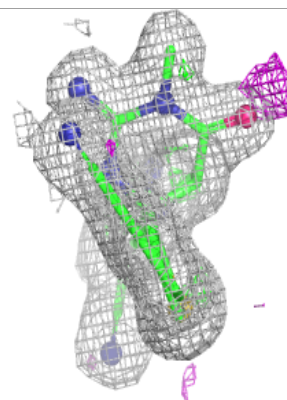
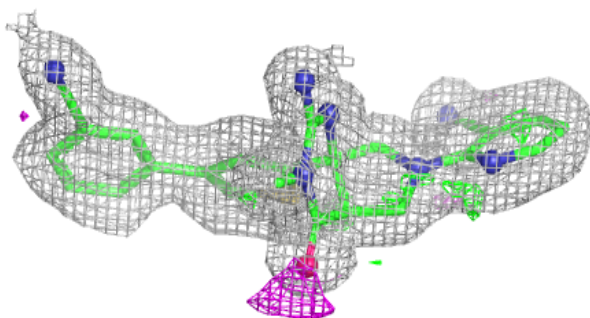
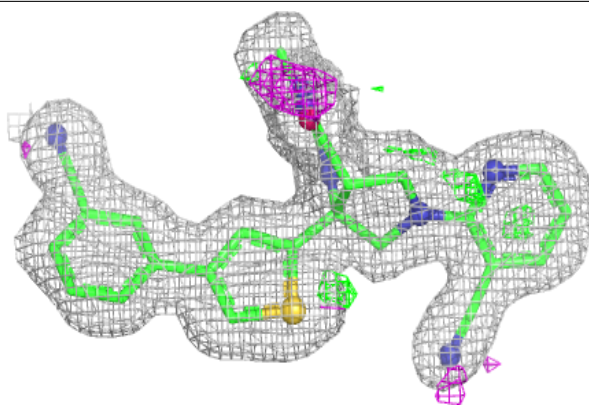
In the following table, the Atoms column lists the number of modelled atoms in the group and the number defined in the chemical component dictionary. The B-factors column lists the minimum, median, 95<sup>th</sup> percentile and maximum values of B factors of atoms in the group. The column labelled 'Q < 0.9' lists the number of atoms with occupancy less than 0.9.

Mol	Type	Chain	Res	Atoms	RSCC	RSR	B-factors( $\text{\AA}^2$ )	Q<0.9
2	TLA	B	501	10/10	0.61	0.39	39,50,58,59	0
2	TLA	A	501	10/10	0.87	0.33	34,41,42,43	0
2	TLA	B	502	10/10	0.94	0.28	29,35,36,36	0
3	10Q	A	502	33/33	0.94	0.10	11,19,26,26	0
3	10Q	B	503	33/33	0.96	0.09	12,19,25,26	0

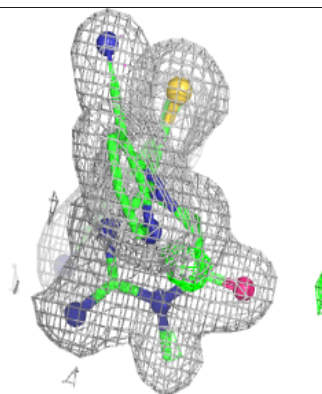
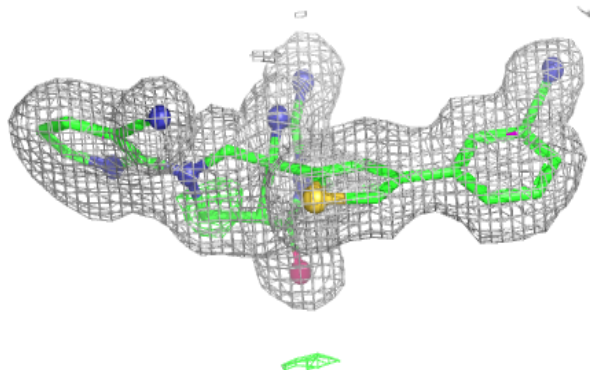
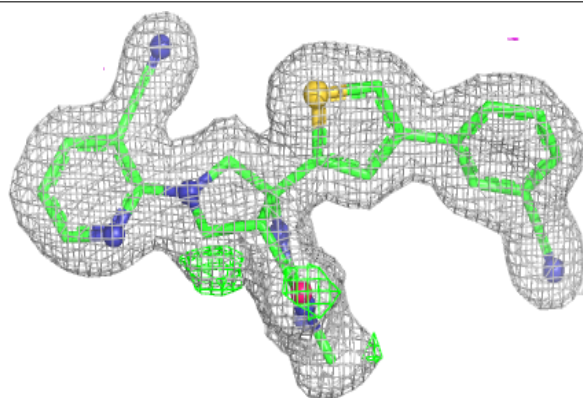
The following is a graphical depiction of the model fit to experimental electron density of all instances of the Ligand of Interest. In addition, ligands with molecular weight > 250 and outliers as shown on the geometry validation Tables will also be included. Each fit is shown from different orientation to approximate a three-dimensional view.

**Electron density around 10Q A 502:**

$2mF_o-DF_c$  (at 0.7 rmsd) in gray  
 $mF_o-DF_c$  (at 3 rmsd) in purple (negative)  
and green (positive)

**Electron density around 10Q B 503:**

$2mF_o-DF_c$  (at 0.7 rmsd) in gray  
 $mF_o-DF_c$  (at 3 rmsd) in purple (negative)  
and green (positive)



## 6.5 Other polymers [i](#)

There are no such residues in this entry.