



Full wwPDB X-ray Structure Validation Report ⓘ

Oct 28, 2024 – 08:30 AM JST

PDB ID : 5H49
Title : Crystal structure of Cbln1
Authors : Zhong, C.; Shen, J.; Zhang, H.; Ding, J.
Deposited on : 2016-10-31
Resolution : 2.80 Å(reported)

This is a Full wwPDB X-ray Structure Validation Report for a publicly released PDB entry.

We welcome your comments at validation@mail.wwpdb.org

A user guide is available at

<https://www.wwpdb.org/validation/2017/XrayValidationReportHelp>

with specific help available everywhere you see the ⓘ symbol.

The types of validation reports are described at

<http://www.wwpdb.org/validation/2017/FAQs#types>.

The following versions of software and data (see [references ⓘ](#)) were used in the production of this report:

MolProbity : 4.02b-467
Mogul : 1.8.5 (274361), CSD as541be (2020)
Xtriage (Phenix) : 1.13
EDS : 3.0
Percentile statistics : 20231227.v01 (using entries in the PDB archive December 27th 2023)
CCP4 : 9.0.003 (Gargrove)
Density-Fitness : 1.0.11
Ideal geometry (proteins) : Engh & Huber (2001)
Ideal geometry (DNA, RNA) : Parkinson et al. (1996)
Validation Pipeline (wwPDB-VP) : 2.39

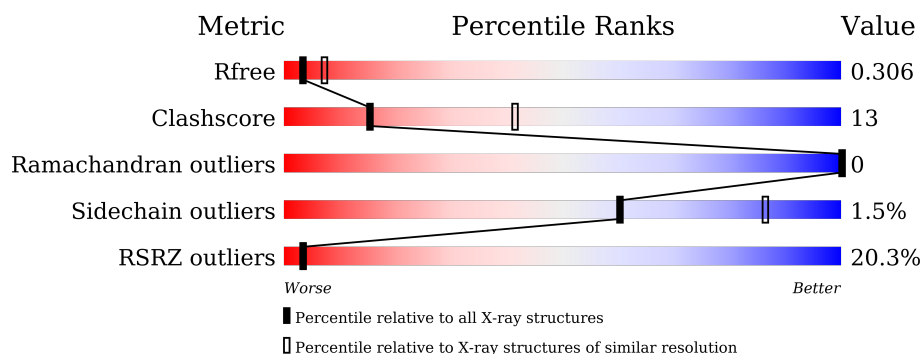
1 Overall quality at a glance

The following experimental techniques were used to determine the structure:

X-RAY DIFFRACTION

The reported resolution of this entry is 2.80 Å.

Percentile scores (ranging between 0-100) for global validation metrics of the entry are shown in the following graphic. The table shows the number of entries on which the scores are based.



Metric	Whole archive (#Entries)	Similar resolution (#Entries, resolution range(Å))
R_{free}	164625	3657 (2.80-2.80)
Clashscore	180529	4123 (2.80-2.80)
Ramachandran outliers	177936	4071 (2.80-2.80)
Sidechain outliers	177891	4073 (2.80-2.80)
RSRZ outliers	164620	3659 (2.80-2.80)

The table below summarises the geometric issues observed across the polymeric chains and their fit to the electron density. The red, orange, yellow and green segments of the lower bar indicate the fraction of residues that contain outliers for ≥ 3 , 2, 1 and 0 types of geometric quality criteria respectively. A grey segment represents the fraction of residues that are not modelled. The numeric value for each fraction is indicated below the corresponding segment, with a dot representing fractions $\leq 5\%$. The upper red bar (where present) indicates the fraction of residues that have poor fit to the electron density. The numeric value is given above the bar.

Mol	Chain	Length	Quality of chain
1	A	184	<div> <div>10%</div> <div>59%</div> <div>15%</div> <div>27%</div> </div>
1	B	184	<div> <div>19%</div> <div>57%</div> <div>12%</div> <div>30%</div> </div>
1	C	184	<div> <div>14%</div> <div>48%</div> <div>19%</div> <div>31%</div> </div>

2 Entry composition

There are 3 unique types of molecules in this entry. The entry contains 3124 atoms, of which 0 are hydrogens and 0 are deuteriums.

In the tables below, the ZeroOcc column contains the number of atoms modelled with zero occupancy, the AltConf column contains the number of residues with at least one atom in alternate conformation and the Trace column contains the number of residues modelled with at most 2 atoms.

- Molecule 1 is a protein called Cerebellin-1.

Mol	Chain	Residues	Atoms					ZeroOcc	AltConf	Trace
1	A	135	Total	C	N	O	S	0	0	0
			1073	686	186	196	5			
1	B	128	Total	C	N	O	S	0	0	0
			1009	649	171	185	4			
1	C	127	Total	C	N	O	S	0	0	0
			1006	648	174	180	4			

There are 36 discrepancies between the modelled and reference sequences:

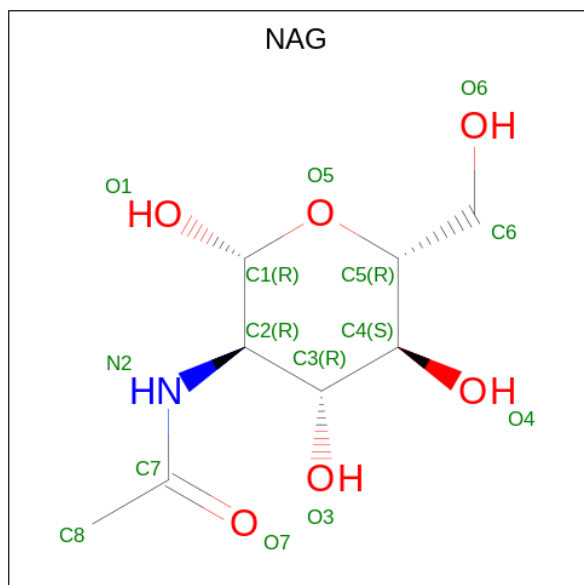
Chain	Residue	Modelled	Actual	Comment	Reference
A	10	GLY	-	expression tag	UNP P63182
A	11	THR	-	expression tag	UNP P63182
A	12	HIS	-	expression tag	UNP P63182
A	13	HIS	-	expression tag	UNP P63182
A	14	HIS	-	expression tag	UNP P63182
A	15	HIS	-	expression tag	UNP P63182
A	16	HIS	-	expression tag	UNP P63182
A	17	HIS	-	expression tag	UNP P63182
A	18	HIS	-	expression tag	UNP P63182
A	19	HIS	-	expression tag	UNP P63182
A	20	GLY	-	expression tag	UNP P63182
A	21	SER	-	expression tag	UNP P63182
B	10	GLY	-	expression tag	UNP P63182
B	11	THR	-	expression tag	UNP P63182
B	12	HIS	-	expression tag	UNP P63182
B	13	HIS	-	expression tag	UNP P63182
B	14	HIS	-	expression tag	UNP P63182
B	15	HIS	-	expression tag	UNP P63182
B	16	HIS	-	expression tag	UNP P63182
B	17	HIS	-	expression tag	UNP P63182
B	18	HIS	-	expression tag	UNP P63182
B	19	HIS	-	expression tag	UNP P63182
B	20	GLY	-	expression tag	UNP P63182

Continued on next page...

Continued from previous page...

Chain	Residue	Modelled	Actual	Comment	Reference
B	21	SER	-	expression tag	UNP P63182
C	10	GLY	-	expression tag	UNP P63182
C	11	THR	-	expression tag	UNP P63182
C	12	HIS	-	expression tag	UNP P63182
C	13	HIS	-	expression tag	UNP P63182
C	14	HIS	-	expression tag	UNP P63182
C	15	HIS	-	expression tag	UNP P63182
C	16	HIS	-	expression tag	UNP P63182
C	17	HIS	-	expression tag	UNP P63182
C	18	HIS	-	expression tag	UNP P63182
C	19	HIS	-	expression tag	UNP P63182
C	20	GLY	-	expression tag	UNP P63182
C	21	SER	-	expression tag	UNP P63182

- Molecule 2 is 2-acetamido-2-deoxy-beta-D-glucopyranose (three-letter code: NAG) (formula: $C_8H_{15}NO_6$).



Mol	Chain	Residues	Atoms				ZeroOcc	AltConf
2	A	1	Total	C	N	O	0	0
			14	8	1	5		

- Molecule 3 is water.

Mol	Chain	Residues	Atoms		ZeroOcc	AltConf
3	A	14	Total	O	0	0
			14	14		

Continued on next page...

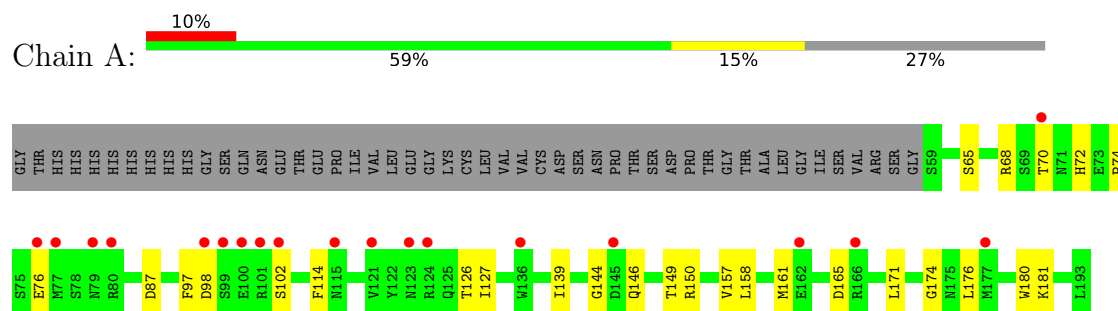
Continued from previous page...

Mol	Chain	Residues	Atoms		ZeroOcc	AltConf
3	B	4	Total	O	0	0
			4	4		
3	C	4	Total	O	0	0
			4	4		

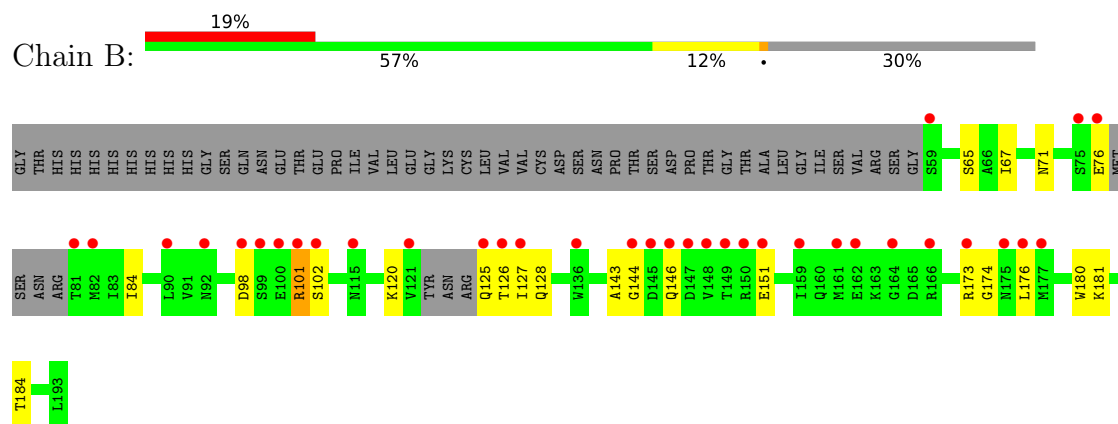
3 Residue-property plots

These plots are drawn for all protein, RNA, DNA and oligosaccharide chains in the entry. The first graphic for a chain summarises the proportions of the various outlier classes displayed in the second graphic. The second graphic shows the sequence view annotated by issues in geometry and electron density. Residues are color-coded according to the number of geometric quality criteria for which they contain at least one outlier: green = 0, yellow = 1, orange = 2 and red = 3 or more. A red dot above a residue indicates a poor fit to the electron density ($RSRZ > 2$). Stretches of 2 or more consecutive residues without any outlier are shown as a green connector. Residues present in the sample, but not in the model, are shown in grey.

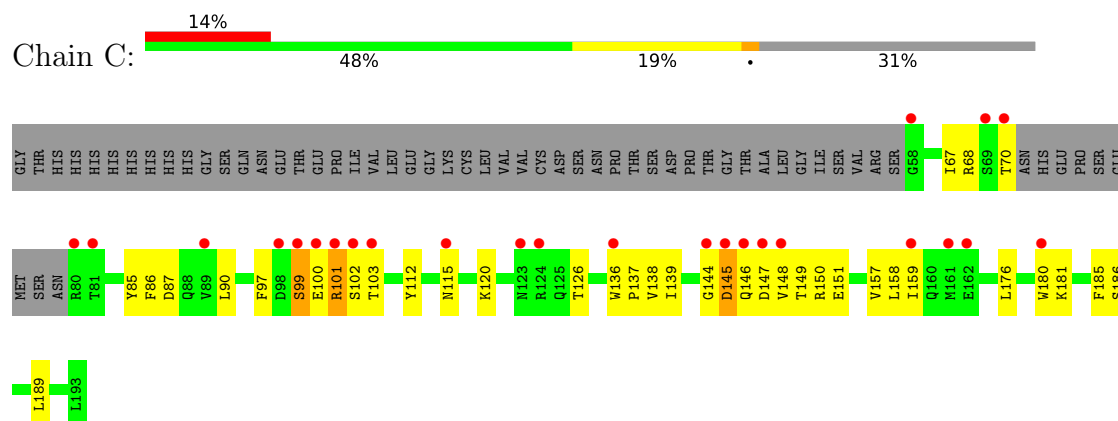
• Molecule 1: Cerebellin-1



• Molecule 1: Cerebellin-1



• Molecule 1: Cerebellin-1



4 Data and refinement statistics

Property	Value	Source
Space group	P 43 21 2	Depositor
Cell constants a, b, c, α , β , γ	91.64Å 91.64Å 151.05Å 90.00° 90.00° 90.00°	Depositor
Resolution (Å)	50.00 – 2.80 50.00 – 2.80	Depositor EDS
% Data completeness (in resolution range)	99.7 (50.00-2.80) 99.7 (50.00-2.80)	Depositor EDS
R_{merge}	(Not available)	Depositor
R_{sym}	(Not available)	Depositor
$\langle I/\sigma(I) \rangle$ ¹	4.45 (at 2.81Å)	Xtriage
Refinement program	REFMAC 5.8.0155	Depositor
R, R_{free}	0.271 , 0.307 0.270 , 0.306	Depositor DCC
R_{free} test set	830 reflections (5.07%)	wwPDB-VP
Wilson B-factor (Å ²)	31.6	Xtriage
Anisotropy	0.077	Xtriage
Bulk solvent k_{sol} (e/Å ³), B_{sol} (Å ²)	0.33 , 33.6	EDS
L-test for twinning ²	$\langle L \rangle = 0.50$, $\langle L^2 \rangle = 0.34$	Xtriage
Estimated twinning fraction	No twinning to report.	Xtriage
F_o, F_c correlation	0.85	EDS
Total number of atoms	3124	wwPDB-VP
Average B, all atoms (Å ²)	32.0	wwPDB-VP

Xtriage's analysis on translational NCS is as follows: *The largest off-origin peak in the Patterson function is 3.41% of the height of the origin peak. No significant pseudotranslation is detected.*

¹Intensities estimated from amplitudes.

²Theoretical values of $\langle |L| \rangle$, $\langle L^2 \rangle$ for acentric reflections are 0.5, 0.333 respectively for untwinned datasets, and 0.375, 0.2 for perfectly twinned datasets.

5 Model quality

5.1 Standard geometry

Bond lengths and bond angles in the following residue types are not validated in this section: NAG

The Z score for a bond length (or angle) is the number of standard deviations the observed value is removed from the expected value. A bond length (or angle) with $|Z| > 5$ is considered an outlier worth inspection. RMSZ is the root-mean-square of all Z scores of the bond lengths (or angles).

Mol	Chain	Bond lengths		Bond angles	
		RMSZ	$\# Z > 5$	RMSZ	$\# Z > 5$
1	A	0.28	0/1097	0.47	0/1481
1	B	0.27	0/1030	0.49	0/1389
1	C	0.27	0/1027	0.47	0/1384
All	All	0.27	0/3154	0.48	0/4254

There are no bond length outliers.

There are no bond angle outliers.

There are no chirality outliers.

There are no planarity outliers.

5.2 Too-close contacts

In the following table, the Non-H and H(model) columns list the number of non-hydrogen atoms and hydrogen atoms in the chain respectively. The H(added) column lists the number of hydrogen atoms added and optimized by MolProbity. The Clashes column lists the number of clashes within the asymmetric unit, whereas Symm-Clashes lists symmetry-related clashes.

Mol	Chain	Non-H	H(model)	H(added)	Clashes	Symm-Clashes
1	A	1073	0	1057	19	0
1	B	1009	0	995	16	0
1	C	1006	0	1003	51	0
2	A	14	0	13	1	0
3	A	14	0	0	0	0
3	B	4	0	0	1	0
3	C	4	0	0	0	0
All	All	3124	0	3068	82	0

The all-atom clashscore is defined as the number of clashes found per 1000 atoms (including hydrogen atoms). The all-atom clashscore for this structure is 13.

All (82) close contacts within the same asymmetric unit are listed below, sorted by their clash magnitude.

Atom-1	Atom-2	Interatomic distance (Å)	Clash overlap (Å)
1:C:102:SER:HB2	1:C:185:PHE:CD2	1.35	1.62
1:C:102:SER:HB2	1:C:185:PHE:CE2	1.40	1.54
1:C:102:SER:CB	1:C:185:PHE:CD2	2.19	1.26
1:C:97:PHE:CZ	1:C:101:ARG:O	1.96	1.18
1:C:102:SER:CB	1:C:185:PHE:CE2	2.33	1.10
1:C:97:PHE:CZ	1:C:102:SER:HA	1.89	1.08
1:C:97:PHE:CD1	1:C:103:THR:O	2.05	1.08
1:C:102:SER:CB	1:C:185:PHE:HD2	1.71	0.94
1:C:97:PHE:HE1	1:C:102:SER:C	1.75	0.88
1:C:102:SER:HB2	1:C:185:PHE:HE2	1.34	0.86
1:C:97:PHE:HZ	1:C:102:SER:HA	1.34	0.86
1:C:97:PHE:CE1	1:C:102:SER:HA	2.12	0.84
1:C:97:PHE:CE1	1:C:102:SER:C	2.53	0.82
1:C:97:PHE:HZ	1:C:101:ARG:O	1.62	0.80
1:C:102:SER:O	1:C:185:PHE:HE2	1.71	0.74
1:C:97:PHE:HD1	1:C:103:THR:O	1.69	0.73
1:C:85:TYR:HB2	1:C:100:GLU:O	1.90	0.71
1:C:97:PHE:CE2	1:C:101:ARG:O	2.42	0.71
1:C:97:PHE:CE1	1:C:102:SER:CA	2.73	0.71
1:B:128:GLN:OE1	1:B:173:ARG:NH1	2.24	0.70
1:A:146:GLN:HE22	1:B:146:GLN:HE21	1.39	0.69
1:C:97:PHE:CZ	1:C:102:SER:CA	2.73	0.69
1:B:126:THR:HG22	1:B:144:GLY:HA2	1.75	0.69
1:C:67:ILE:HD11	1:C:90:LEU:HD11	1.78	0.65
1:A:70:THR:HG22	1:A:72:HIS:H	1.61	0.65
1:B:98:ASP:HB2	1:B:101:ARG:HD3	1.80	0.63
1:C:115:ASN:ND2	1:C:186:SER:OG	2.33	0.61
1:C:149:THR:HG22	1:C:150:ARG:HG3	1.83	0.61
1:C:85:TYR:HA	1:C:101:ARG:HA	1.84	0.60
1:C:102:SER:CB	1:C:185:PHE:HE2	2.00	0.60
1:C:102:SER:HB3	1:C:185:PHE:CD2	2.33	0.60
1:B:71:ASN:HB3	1:B:181:LYS:HE3	1.83	0.60
1:A:126:THR:HA	1:A:144:GLY:HA3	1.84	0.59
1:A:127:ILE:HG22	1:A:174:GLY:HA3	1.85	0.58
1:B:120:LYS:HD3	1:B:127:ILE:HG12	1.85	0.58
1:C:102:SER:HB3	1:C:185:PHE:HD2	1.66	0.58
1:C:126:THR:HG22	1:C:145:ASP:H	1.68	0.57
1:C:102:SER:O	1:C:185:PHE:CE2	2.55	0.57
1:C:99:SER:HB3	1:C:101:ARG:HE	1.70	0.56
1:A:150:ARG:HH21	1:A:181:LYS:HZ3	1.54	0.56

Continued on next page...

Continued from previous page...

Atom-1	Atom-2	Interatomic distance (Å)	Clash overlap (Å)
1:C:97:PHE:CE1	1:C:103:THR:O	2.58	0.55
1:C:70:THR:HG23	1:C:181:LYS:HD3	1.88	0.54
1:B:127:ILE:HG22	1:B:174:GLY:HA3	1.90	0.53
1:C:97:PHE:HE1	1:C:102:SER:CA	2.19	0.53
1:C:136:TRP:HE3	1:C:137:PRO:HD2	1.74	0.53
1:C:86:PHE:CE1	1:C:102:SER:HB3	2.44	0.53
1:B:143:ALA:HB1	1:B:151:GLU:HG2	1.92	0.51
1:A:65:SER:HB2	1:C:158:LEU:HB2	1.93	0.51
1:A:139:ILE:HD13	1:A:157:VAL:HB	1.91	0.51
1:A:161:MET:HG3	1:A:165:ASP:HB2	1.92	0.50
1:A:68:ARG:HG2	1:A:180:TRP:O	2.14	0.48
1:C:126:THR:HA	1:C:144:GLY:HA3	1.95	0.48
1:B:98:ASP:CB	1:B:101:ARG:HD3	2.44	0.47
1:A:76:GLU:N	2:A:201:NAG:H82	2.30	0.47
1:A:171:LEU:HD22	1:A:176:LEU:HG	1.96	0.46
1:B:76:GLU:HA	3:B:202:HOH:O	2.16	0.45
1:B:67:ILE:HG13	1:B:184:THR:HG22	1.99	0.45
1:A:158:LEU:HB2	1:B:65:SER:HB2	1.99	0.44
1:C:97:PHE:HE1	1:C:102:SER:O	1.99	0.44
1:C:120:LYS:HE2	1:C:151:GLU:HB3	1.98	0.44
1:C:68:ARG:HD2	1:C:87:ASP:OD1	2.17	0.44
1:A:180:TRP:H	1:A:180:TRP:HE3	1.62	0.44
1:B:176:LEU:HD13	1:B:180:TRP:HB3	1.99	0.44
1:A:97:PHE:CZ	1:A:102:SER:HA	2.53	0.43
1:C:139:ILE:HD13	1:C:157:VAL:HB	1.99	0.43
1:B:84:ILE:O	1:B:102:SER:HB2	2.18	0.43
1:C:176:LEU:HD13	1:C:180:TRP:HB3	2.00	0.43
1:C:85:TYR:CA	1:C:101:ARG:HA	2.49	0.42
1:C:101:ARG:HG3	1:C:103:THR:H	1.84	0.42
1:B:125:GLN:HE21	1:B:174:GLY:HA2	1.85	0.42
1:C:138:VAL:HG11	1:C:159:ILE:HD11	2.02	0.42
1:C:86:PHE:HE1	1:C:102:SER:HB3	1.83	0.42
1:A:68:ARG:HD2	1:A:87:ASP:OD1	2.20	0.42
1:A:74:PRO:HG3	1:A:180:TRP:CZ3	2.54	0.42
1:C:68:ARG:HG2	1:C:180:TRP:CD1	2.55	0.41
1:C:112:TYR:CZ	1:C:189:LEU:HD13	2.55	0.41
1:C:148:VAL:HG23	1:C:151:GLU:HB2	2.02	0.41
1:A:114:PHE:HE2	1:A:161:MET:HE1	1.86	0.41
1:A:144:GLY:O	1:A:146:GLN:HG2	2.20	0.41
1:C:146:GLN:HG2	1:C:147:ASP:H	1.86	0.41
1:B:101:ARG:H	1:B:101:ARG:HD2	1.86	0.41

Continued on next page...

Continued from previous page...

Atom-1	Atom-2	Interatomic distance (Å)	Clash overlap (Å)
1:A:149:THR:HG23	1:C:145:ASP:HB2	2.04	0.40

There are no symmetry-related clashes.

5.3 Torsion angles [i](#)

5.3.1 Protein backbone [i](#)

In the following table, the Percentiles column shows the percent Ramachandran outliers of the chain as a percentile score with respect to all X-ray entries followed by that with respect to entries of similar resolution.

The Analysed column shows the number of residues for which the backbone conformation was analysed, and the total number of residues.

Mol	Chain	Analysed	Favoured	Allowed	Outliers	Percentiles	
1	A	133/184 (72%)	127 (96%)	6 (4%)	0	100	100
1	B	122/184 (66%)	116 (95%)	6 (5%)	0	100	100
1	C	123/184 (67%)	118 (96%)	5 (4%)	0	100	100
All	All	378/552 (68%)	361 (96%)	17 (4%)	0	100	100

There are no Ramachandran outliers to report.

5.3.2 Protein sidechains [i](#)

In the following table, the Percentiles column shows the percent sidechain outliers of the chain as a percentile score with respect to all X-ray entries followed by that with respect to entries of similar resolution.

The Analysed column shows the number of residues for which the sidechain conformation was analysed, and the total number of residues.

Mol	Chain	Analysed	Rotameric	Outliers	Percentiles	
1	A	116/158 (73%)	115 (99%)	1 (1%)	75	92
1	B	109/158 (69%)	108 (99%)	1 (1%)	75	92
1	C	107/158 (68%)	104 (97%)	3 (3%)	38	72
All	All	332/474 (70%)	327 (98%)	5 (2%)	60	86

All (5) residues with a non-rotameric sidechain are listed below:

Mol	Chain	Res	Type
1	A	98	ASP
1	B	101	ARG
1	C	99	SER
1	C	101	ARG
1	C	145	ASP

Sometimes sidechains can be flipped to improve hydrogen bonding and reduce clashes. All (2) such sidechains are listed below:

Mol	Chain	Res	Type
1	A	146	GLN
1	C	146	GLN

5.3.3 RNA [i](#)

There are no RNA molecules in this entry.

5.4 Non-standard residues in protein, DNA, RNA chains [i](#)

There are no non-standard protein/DNA/RNA residues in this entry.

5.5 Carbohydrates [i](#)

There are no oligosaccharides in this entry.

5.6 Ligand geometry [i](#)

1 ligand is modelled in this entry.

In the following table, the Counts columns list the number of bonds (or angles) for which Mogul statistics could be retrieved, the number of bonds (or angles) that are observed in the model and the number of bonds (or angles) that are defined in the Chemical Component Dictionary. The Link column lists molecule types, if any, to which the group is linked. The Z score for a bond length (or angle) is the number of standard deviations the observed value is removed from the expected value. A bond length (or angle) with $|Z| > 2$ is considered an outlier worth inspection. RMSZ is the root-mean-square of all Z scores of the bond lengths (or angles).

Mol	Type	Chain	Res	Link	Bond lengths			Bond angles		
					Counts	RMSZ	$\# Z > 2$	Counts	RMSZ	$\# Z > 2$
2	NAG	A	201	1	14,14,15	0.22	0	17,19,21	0.44	0

In the following table, the Chirals column lists the number of chiral outliers, the number of chiral centers analysed, the number of these observed in the model and the number defined in the Chemical Component Dictionary. Similar counts are reported in the Torsion and Rings columns. '-' means no outliers of that kind were identified.

Mol	Type	Chain	Res	Link	Chirals	Torsions	Rings
2	NAG	A	201	1	-	0/6/23/26	0/1/1/1

There are no bond length outliers.

There are no bond angle outliers.

There are no chirality outliers.

There are no torsion outliers.

There are no ring outliers.

1 monomer is involved in 1 short contact:

Mol	Chain	Res	Type	Clashes	Symm-Clashes
2	A	201	NAG	1	0

5.7 Other polymers [i](#)

There are no such residues in this entry.

5.8 Polymer linkage issues [i](#)

There are no chain breaks in this entry.

6 Fit of model and data

6.1 Protein, DNA and RNA chains

In the following table, the column labelled ‘#RSRZ> 2’ contains the number (and percentage) of RSRZ outliers, followed by percent RSRZ outliers for the chain as percentile scores relative to all X-ray entries and entries of similar resolution. The OWAB column contains the minimum, median, 95th percentile and maximum values of the occupancy-weighted average B-factor per residue. The column labelled ‘Q< 0.9’ lists the number of (and percentage) of residues with an average occupancy less than 0.9.

Mol	Chain	Analysed	<RSRZ>	#RSRZ>2		OWAB(Å ²)	Q<0.9
1	A	135/184 (73%)	0.71	19 (14%)	7 6	14, 22, 60, 100	0
1	B	128/184 (69%)	1.39	35 (27%)	2 2	16, 29, 81, 119	0
1	C	127/184 (69%)	1.31	25 (19%)	3 3	16, 25, 63, 115	0
All	All	390/552 (70%)	1.13	79 (20%)	3 3	14, 26, 71, 119	0

All (79) RSRZ outliers are listed below:

Mol	Chain	Res	Type	RSRZ
1	C	102	SER	18.5
1	C	145	ASP	11.2
1	A	100	GLU	9.7
1	B	99	SER	9.2
1	C	100	GLU	8.8
1	C	101	ARG	8.3
1	A	99	SER	8.0
1	C	146	GLN	6.2
1	B	98	ASP	6.0
1	B	147	ASP	6.0
1	B	101	ARG	5.7
1	C	103	THR	5.7
1	B	149	THR	5.4
1	B	102	SER	5.4
1	B	100	GLU	5.4
1	B	81	THR	5.4
1	B	126	THR	5.3
1	B	82	MET	5.2
1	C	99	SER	4.8
1	C	136	TRP	4.7
1	C	147	ASP	4.5
1	A	76	GLU	4.5
1	C	80	ARG	4.5

Continued on next page...

Continued from previous page...

Mol	Chain	Res	Type	RSRZ
1	C	124	ARG	4.4
1	C	144	GLY	4.2
1	A	124	ARG	4.2
1	A	101	ARG	4.0
1	B	148	VAL	4.0
1	B	125	GLN	4.0
1	B	146	GLN	3.9
1	B	136	TRP	3.8
1	B	177	MET	3.7
1	B	59	SER	3.7
1	A	136	TRP	3.6
1	C	81	THR	3.5
1	A	98	ASP	3.4
1	B	173	ARG	3.4
1	A	123	ASN	3.3
1	C	58	GLY	3.3
1	B	75	SER	3.3
1	C	98	ASP	3.2
1	B	145	ASP	3.2
1	B	76	GLU	3.2
1	B	164	GLY	2.9
1	C	123	ASN	2.9
1	B	121	VAL	2.9
1	A	79	ASN	2.9
1	A	80	ARG	2.9
1	B	127	ILE	2.9
1	A	77	MET	2.9
1	A	121	VAL	2.7
1	A	145	ASP	2.7
1	B	161	MET	2.7
1	B	159	ILE	2.6
1	B	150	ARG	2.5
1	C	162	GLU	2.5
1	C	161	MET	2.5
1	A	115	ASN	2.5
1	B	115	ASN	2.5
1	C	148	VAL	2.4
1	A	162	GLU	2.4
1	C	69	SER	2.4
1	B	175	ASN	2.4
1	C	70	THR	2.3
1	A	177	MET	2.3

Continued on next page...

Continued from previous page...

Mol	Chain	Res	Type	RSRZ
1	B	144	GLY	2.3
1	B	162	GLU	2.3
1	C	159	ILE	2.2
1	C	115	ASN	2.2
1	A	166	ARG	2.2
1	B	90	LEU	2.2
1	A	70	THR	2.2
1	B	176	LEU	2.2
1	C	180	TRP	2.2
1	B	166	ARG	2.1
1	B	151	GLU	2.1
1	B	92	ASN	2.1
1	A	102	SER	2.1
1	C	89	VAL	2.1

6.2 Non-standard residues in protein, DNA, RNA chains [i](#)

There are no non-standard protein/DNA/RNA residues in this entry.

6.3 Carbohydrates [i](#)

There are no monosaccharides in this entry.

6.4 Ligands [i](#)

In the following table, the Atoms column lists the number of modelled atoms in the group and the number defined in the chemical component dictionary. The B-factors column lists the minimum, median, 95th percentile and maximum values of B factors of atoms in the group. The column labelled 'Q<0.9' lists the number of atoms with occupancy less than 0.9.

Mol	Type	Chain	Res	Atoms	RSCC	RSR	B-factors(\AA^2)	Q<0.9
2	NAG	A	201	14/15	0.82	0.17	48,54,59,60	0

6.5 Other polymers [i](#)

There are no such residues in this entry.