



# Full wwPDB X-ray Structure Validation Report ⓘ

Jun 22, 2024 – 09:43 AM EDT

PDB ID : 6HF6  
Title : Crystal structure of the Protease 1 (E29A,E60A,E80A) from *Pyrococcus horikoshii* co-crystallized with Tb-Xo4.  
Authors : Engilberge, S.; Wagner, T.; Santoni, G.; Breyton, C.; Shima, S.; Franzetti, B.; Riobe, F.; Maury, O.; Girard, E.  
Deposited on : 2018-08-21  
Resolution : 2.00 Å(reported)

This is a Full wwPDB X-ray Structure Validation Report for a publicly released PDB entry.

We welcome your comments at [validation@mail.wwpdb.org](mailto:validation@mail.wwpdb.org)

A user guide is available at

<https://www.wwpdb.org/validation/2017/XrayValidationReportHelp>

with specific help available everywhere you see the ⓘ symbol.

The types of validation reports are described at

<http://www.wwpdb.org/validation/2017/FAQs#types>.

---

The following versions of software and data (see [references ⓘ](#)) were used in the production of this report:

MolProbity	:	4.02b-467
Mogul	:	2022.3.0, CSD as543be (2022)
Xtriage (Phenix)	:	1.20.1
EDS	:	2.37.1
buster-report	:	1.1.7 (2018)
Percentile statistics	:	20191225.v01 (using entries in the PDB archive December 25th 2019)
Refmac	:	5.8.0158
CCP4	:	7.0.044 (Gargrove)
Ideal geometry (proteins)	:	Engh & Huber (2001)
Ideal geometry (DNA, RNA)	:	Parkinson et al. (1996)
Validation Pipeline (wwPDB-VP)	:	2.37.1

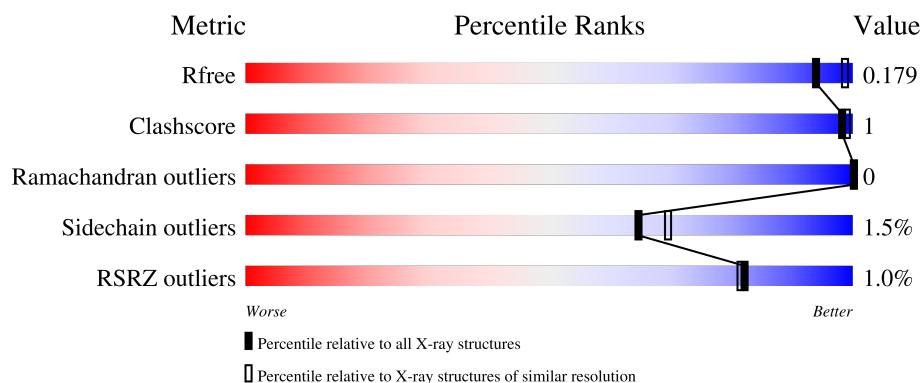
# 1 Overall quality at a glance

The following experimental techniques were used to determine the structure:

*X-RAY DIFFRACTION*

The reported resolution of this entry is 2.00 Å.

Percentile scores (ranging between 0-100) for global validation metrics of the entry are shown in the following graphic. The table shows the number of entries on which the scores are based.



Metric	Whole archive (#Entries)	Similar resolution (#Entries, resolution range(Å))
$R_{free}$	130704	8085 (2.00-2.00)
Clashscore	141614	9178 (2.00-2.00)
Ramachandran outliers	138981	9054 (2.00-2.00)
Sidechain outliers	138945	9053 (2.00-2.00)
RSRZ outliers	127900	7900 (2.00-2.00)

The table below summarises the geometric issues observed across the polymeric chains and their fit to the electron density. The red, orange, yellow and green segments of the lower bar indicate the fraction of residues that contain outliers for  $\geq 3$ , 2, 1 and 0 types of geometric quality criteria respectively. A grey segment represents the fraction of residues that are not modelled. The numeric value for each fraction is indicated below the corresponding segment, with a dot representing fractions  $\leq 5\%$ . The upper red bar (where present) indicates the fraction of residues that have poor fit to the electron density. The numeric value is given above the bar.

Mol	Chain	Length	Quality of chain
1	A	166	<div> <div>0%</div> <div>97%</div> <div>.</div> </div>
1	B	166	<div> <div>0%</div> <div>98%</div> <div>.</div> </div>
1	C	166	<div> <div>2%</div> <div>98%</div> <div>.</div> </div>

The following table lists non-polymeric compounds, carbohydrate monomers and non-standard

residues in protein, DNA, RNA chains that are outliers for geometric or electron-density-fit criteria:

Mol	Type	Chain	Res	Chirality	Geometry	Clashes	Electron density
3	MLI	B	202	-	-	-	X
3	MLI	C	202	-	-	-	X

## 2 Entry composition

There are 5 unique types of molecules in this entry. The entry contains 8605 atoms, of which 4007 are hydrogens and 0 are deuteriums.

In the tables below, the ZeroOcc column contains the number of atoms modelled with zero occupancy, the AltConf column contains the number of residues with at least one atom in alternate conformation and the Trace column contains the number of residues modelled with at most 2 atoms.

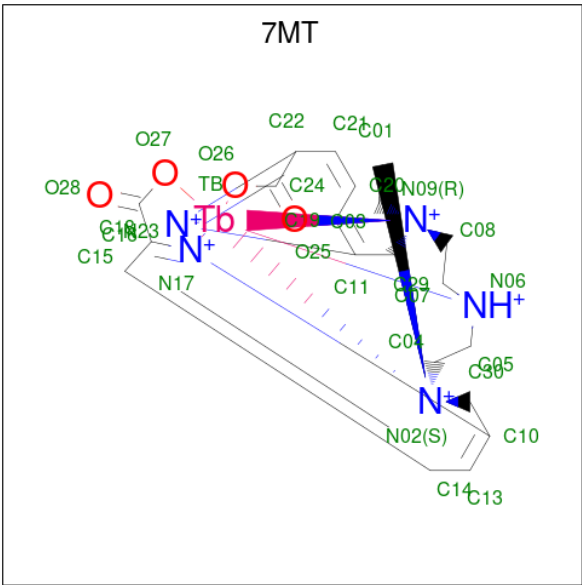
- Molecule 1 is a protein called Deglycase PH1704.

Mol	Chain	Residues	Atoms						ZeroOcc	AltConf	Trace
1	A	166	Total	C	H	N	O	S	0	4	0
			2620	842	1309	226	238	5			
1	B	166	Total	C	H	N	O	S	0	4	0
			2634	847	1319	225	238	5			
1	C	166	Total	C	H	N	O	S	0	2	0
			2609	839	1304	225	236	5			

There are 9 discrepancies between the modelled and reference sequences:

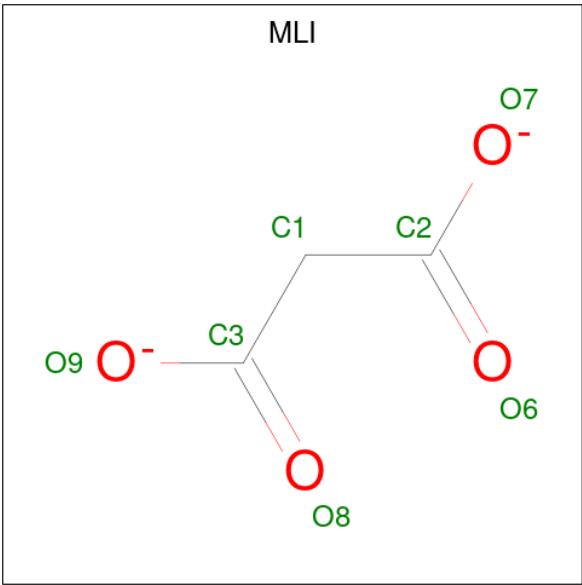
Chain	Residue	Modelled	Actual	Comment	Reference
A	29	ALA	GLU	engineered mutation	UNP O59413
A	60	ALA	GLU	engineered mutation	UNP O59413
A	80	ALA	GLU	engineered mutation	UNP O59413
B	29	ALA	GLU	engineered mutation	UNP O59413
B	60	ALA	GLU	engineered mutation	UNP O59413
B	80	ALA	GLU	engineered mutation	UNP O59413
C	29	ALA	GLU	engineered mutation	UNP O59413
C	60	ALA	GLU	engineered mutation	UNP O59413
C	80	ALA	GLU	engineered mutation	UNP O59413

- Molecule 2 is Tb-Xo4 (three-letter code: 7MT) (formula: C<sub>20</sub>H<sub>23</sub>N<sub>5</sub>O<sub>4</sub>Tb).



Mol	Chain	Residues	Atoms						ZeroOcc	AltConf
2	A	1	Total	C	H	N	O	Tb	0	0
			53	20	23	5	4	1		
2	B	1	Total	C	H	N	O	Tb	0	0
			53	20	23	5	4	1		
2	C	1	Total	C	H	N	O	Tb	0	0
			53	20	23	5	4	1		

- Molecule 3 is MALONATE ION (three-letter code: MLI) (formula: C<sub>3</sub>H<sub>2</sub>O<sub>4</sub>).



Mol	Chain	Residues	Atoms				ZeroOcc	AltConf
3	A	1	Total	C	H	O	0	0
			9	3	2	4		

Continued on next page...

*Continued from previous page...*

Mol	Chain	Residues	Atoms				ZeroOcc	AltConf
3	B	1	Total	C	H	O	0	0
			9	3	2	4		
3	C	1	Total	C	H	O	0	0
			9	3	2	4		

- Molecule 4 is TERBIUM(III) ION (three-letter code: Tb) (formula: Tb).

Mol	Chain	Residues	Atoms		ZeroOcc	AltConf
4	A	2	Total	Tb	0	0
			2	2		
4	B	1	Total	Tb	0	0
			1	1		
4	C	1	Total	Tb	0	0
			1	1		

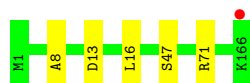
- Molecule 5 is water.

Mol	Chain	Residues	Atoms		ZeroOcc	AltConf
5	A	206	Total	O	0	0
			206	206		
5	B	190	Total	O	0	0
			190	190		
5	C	156	Total	O	0	0
			156	156		

### 3 Residue-property plots [i](#)

These plots are drawn for all protein, RNA, DNA and oligosaccharide chains in the entry. The first graphic for a chain summarises the proportions of the various outlier classes displayed in the second graphic. The second graphic shows the sequence view annotated by issues in geometry and electron density. Residues are color-coded according to the number of geometric quality criteria for which they contain at least one outlier: green = 0, yellow = 1, orange = 2 and red = 3 or more. A red dot above a residue indicates a poor fit to the electron density ( $RSRZ > 2$ ). Stretches of 2 or more consecutive residues without any outlier are shown as a green connector. Residues present in the sample, but not in the model, are shown in grey.

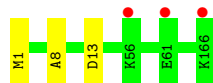
- Molecule 1: Deglycase PH1704



- Molecule 1: Deglycase PH1704



- Molecule 1: Deglycase PH1704



## 4 Data and refinement statistics

Property	Value	Source
Space group	P 41 21 2	Depositor
Cell constants a, b, c, $\alpha$ , $\beta$ , $\gamma$	124.62Å 124.62Å 130.31Å 90.00° 90.00° 90.00°	Depositor
Resolution (Å)	19.99 – 2.00 19.99 – 2.00	Depositor EDS
% Data completeness (in resolution range)	99.4 (19.99-2.00) 99.4 (19.99-2.00)	Depositor EDS
$R_{merge}$	0.16	Depositor
$R_{sym}$	(Not available)	Depositor
$\langle I/\sigma(I) \rangle$ <sup>1</sup>	3.44 (at 2.01Å)	Xtriage
Refinement program	BUSTER 2.10.3	Depositor
R, $R_{free}$	0.162 , 0.181 0.163 , 0.179	Depositor DCC
$R_{free}$ test set	3385 reflections (4.89%)	wwPDB-VP
Wilson B-factor (Å <sup>2</sup> )	28.0	Xtriage
Anisotropy	0.867	Xtriage
Bulk solvent $k_{sol}$ (e/Å <sup>3</sup> ), $B_{sol}$ (Å <sup>2</sup> )	0.43 , 60.8	EDS
L-test for twinning <sup>2</sup>	$\langle  L  \rangle = 0.49$ , $\langle L^2 \rangle = 0.32$	Xtriage
Estimated twinning fraction	0.015 for -h,l,k 0.000 for -l,-k,-h	Xtriage
$F_o, F_c$ correlation	0.97	EDS
Total number of atoms	8605	wwPDB-VP
Average B, all atoms (Å <sup>2</sup> )	39.0	wwPDB-VP

Xtriage's analysis on translational NCS is as follows: *The largest off-origin peak in the Patterson function is 3.33% of the height of the origin peak. No significant pseudotranslation is detected.*

<sup>1</sup>Intensities estimated from amplitudes.

<sup>2</sup>Theoretical values of  $\langle |L| \rangle$ ,  $\langle L^2 \rangle$  for acentric reflections are 0.5, 0.333 respectively for untwinned datasets, and 0.375, 0.2 for perfectly twinned datasets.



## 5 Model quality [i](#)

### 5.1 Standard geometry [i](#)

Bond lengths and bond angles in the following residue types are not validated in this section: TB, 7MT, MLI

The Z score for a bond length (or angle) is the number of standard deviations the observed value is removed from the expected value. A bond length (or angle) with  $|Z| > 5$  is considered an outlier worth inspection. RMSZ is the root-mean-square of all Z scores of the bond lengths (or angles).

Mol	Chain	Bond lengths		Bond angles	
		RMSZ	# Z  >5	RMSZ	# Z  >5
1	A	0.53	0/1370	0.60	0/1851
1	B	0.52	0/1363	0.61	0/1842
1	C	0.48	0/1347	0.60	0/1820
All	All	0.51	0/4080	0.60	0/5513

There are no bond length outliers.

There are no bond angle outliers.

There are no chirality outliers.

There are no planarity outliers.

### 5.2 Too-close contacts [i](#)

In the following table, the Non-H and H(model) columns list the number of non-hydrogen atoms and hydrogen atoms in the chain respectively. The H(added) column lists the number of hydrogen atoms added and optimized by MolProbity. The Clashes column lists the number of clashes within the asymmetric unit, whereas Symm-Clashes lists symmetry-related clashes.

Mol	Chain	Non-H	H(model)	H(added)	Clashes	Symm-Clashes
1	A	1311	1309	1296	2	1
1	B	1315	1319	1323	2	0
1	C	1305	1304	1308	1	0
2	A	30	23	0	1	0
2	B	30	23	0	1	0
2	C	30	23	0	1	0
3	A	7	2	2	0	0
3	B	7	2	2	0	0
3	C	7	2	2	0	0
4	A	2	0	0	0	0

*Continued on next page...*

*Continued from previous page...*

Mol	Chain	Non-H	H(model)	H(added)	Clashes	Symm-Clashes
4	B	1	0	0	0	0
4	C	1	0	0	0	0
5	A	206	0	0	0	0
5	B	190	0	0	0	0
5	C	156	0	0	0	0
All	All	4598	4007	3933	5	1

The all-atom clashscore is defined as the number of clashes found per 1000 atoms (including hydrogen atoms). The all-atom clashscore for this structure is 1.

All (5) close contacts within the same asymmetric unit are listed below, sorted by their clash magnitude.

Atom-1	Atom-2	Interatomic distance (Å)	Clash overlap (Å)
1:B:8:ALA:HB1	2:B:201:7MT:O25	1.98	0.64
1:A:8:ALA:HB1	2:A:201:7MT:O25	2.06	0.56
1:C:8:ALA:HB1	2:C:201:7MT:O25	2.15	0.45
1:B:16:LEU:HD23	1:B:16:LEU:C	2.41	0.41
1:A:16:LEU:HD23	1:A:16:LEU:C	2.41	0.40

All (1) symmetry-related close contacts are listed below. The label for Atom-2 includes the symmetry operator and encoded unit-cell translations to be applied.

Atom-1	Atom-2	Interatomic distance (Å)	Clash overlap (Å)
1:A:71:ARG:HD3	1:A:71:ARG:HD3[7_555]	1.17	0.43

## 5.3 Torsion angles [i](#)

### 5.3.1 Protein backbone [i](#)

In the following table, the Percentiles column shows the percent Ramachandran outliers of the chain as a percentile score with respect to all X-ray entries followed by that with respect to entries of similar resolution.

The Analysed column shows the number of residues for which the backbone conformation was analysed, and the total number of residues.

Mol	Chain	Analysed	Favoured	Allowed	Outliers	Percentiles	
1	A	168/166 (101%)	167 (99%)	1 (1%)	0	100	100
1	B	168/166 (101%)	167 (99%)	1 (1%)	0	100	100

*Continued on next page...*

*Continued from previous page...*

Mol	Chain	Analysed	Favoured	Allowed	Outliers	Percentiles	
1	C	166/166 (100%)	165 (99%)	1 (1%)	0	100	100
All	All	502/498 (101%)	499 (99%)	3 (1%)	0	100	100

There are no Ramachandran outliers to report.

### 5.3.2 Protein sidechains ⓘ

In the following table, the Percentiles column shows the percent sidechain outliers of the chain as a percentile score with respect to all X-ray entries followed by that with respect to entries of similar resolution.

The Analysed column shows the number of residues for which the sidechain conformation was analysed, and the total number of residues.

Mol	Chain	Analysed	Rotameric	Outliers	Percentiles	
1	A	141/137 (103%)	138 (98%)	3 (2%)	53	57
1	B	141/137 (103%)	139 (99%)	2 (1%)	67	72
1	C	139/137 (102%)	137 (99%)	2 (1%)	67	72
All	All	421/411 (102%)	414 (98%)	7 (2%)	65	65

All (7) residues with a non-rotameric sidechain are listed below:

Mol	Chain	Res	Type
1	A	13[A]	ASP
1	A	13[B]	ASP
1	A	47	SER
1	B	13	ASP
1	B	164	LEU
1	C	1	MET
1	C	13	ASP

Sometimes sidechains can be flipped to improve hydrogen bonding and reduce clashes. There are no such sidechains identified.

### 5.3.3 RNA ⓘ

There are no RNA molecules in this entry.

## 5.4 Non-standard residues in protein, DNA, RNA chains [i](#)

There are no non-standard protein/DNA/RNA residues in this entry.

## 5.5 Carbohydrates [i](#)

There are no monosaccharides in this entry.

## 5.6 Ligand geometry [i](#)

Of 10 ligands modelled in this entry, 4 are monoatomic - leaving 6 for Mogul analysis.

In the following table, the Counts columns list the number of bonds (or angles) for which Mogul statistics could be retrieved, the number of bonds (or angles) that are observed in the model and the number of bonds (or angles) that are defined in the Chemical Component Dictionary. The Link column lists molecule types, if any, to which the group is linked. The Z score for a bond length (or angle) is the number of standard deviations the observed value is removed from the expected value. A bond length (or angle) with  $|Z| > 2$  is considered an outlier worth inspection. RMSZ is the root-mean-square of all Z scores of the bond lengths (or angles).

Mol	Type	Chain	Res	Link	Bond lengths			Bond angles		
					Counts	RMSZ	# $ Z  > 2$	Counts	RMSZ	# $ Z  > 2$
3	MLI	A	202	2	6,6,6	2.35	3 (50%)	7,7,7	1.08	0
3	MLI	B	202	2	6,6,6	2.25	3 (50%)	7,7,7	1.49	1 (14%)
2	7MT	B	201	3	21,38,38	1.49	2 (9%)	22,76,76	2.32	8 (36%)
3	MLI	C	202	2	6,6,6	1.75	2 (33%)	7,7,7	1.16	0
2	7MT	A	201	3	21,38,38	1.41	2 (9%)	22,76,76	2.38	5 (22%)
2	7MT	C	201	3	21,38,38	1.49	2 (9%)	22,76,76	2.19	9 (40%)

In the following table, the Chirals column lists the number of chiral outliers, the number of chiral centers analysed, the number of these observed in the model and the number defined in the Chemical Component Dictionary. Similar counts are reported in the Torsion and Rings columns. '-' means no outliers of that kind were identified.

Mol	Type	Chain	Res	Link	Chirals	Torsions	Rings
3	MLI	C	202	2	-	3/4/4/4	-
3	MLI	A	202	2	-	2/4/4/4	-
3	MLI	B	202	2	-	2/4/4/4	-

All (14) bond length outliers are listed below:

Mol	Chain	Res	Type	Atoms	Z	Observed(Å)	Ideal(Å)
2	A	201	7MT	C30-C10	4.51	1.56	1.51
2	B	201	7MT	C29-C11	4.50	1.56	1.51
2	C	201	7MT	C30-C10	4.43	1.56	1.51
2	C	201	7MT	C29-C11	3.94	1.55	1.51
2	B	201	7MT	C30-C10	3.86	1.55	1.51
3	A	202	MLI	C1-C2	3.72	1.56	1.51
3	B	202	MLI	C1-C2	3.66	1.56	1.51
2	A	201	7MT	C29-C11	3.50	1.55	1.51
3	B	202	MLI	C1-C3	2.89	1.55	1.51
3	A	202	MLI	C1-C3	2.86	1.55	1.51
3	A	202	MLI	O8-C3	2.60	1.30	1.22
3	C	202	MLI	C1-C3	2.49	1.54	1.51
3	C	202	MLI	C1-C2	2.22	1.54	1.51
3	B	202	MLI	O6-C2	2.01	1.28	1.22

All (23) bond angle outliers are listed below:

Mol	Chain	Res	Type	Atoms	Z	Observed(°)	Ideal(°)
2	A	201	7MT	O26-C24-C22	6.09	123.56	115.69
2	B	201	7MT	O26-C24-C22	5.75	123.12	115.69
2	A	201	7MT	C16-N17-C10	5.24	122.66	118.70
2	A	201	7MT	C13-C10-N17	-4.85	118.28	121.74
2	C	201	7MT	C16-N17-C10	4.77	122.31	118.70
2	C	201	7MT	O26-C24-C22	4.08	120.97	115.69
2	C	201	7MT	C13-C10-N17	-4.00	118.89	121.74
2	A	201	7MT	O26-C24-O25	-3.98	119.02	125.35
2	B	201	7MT	O26-C24-O25	-3.71	119.47	125.35
2	B	201	7MT	C22-N23-C11	3.62	121.44	118.70
2	C	201	7MT	O27-C18-O28	-3.57	119.68	125.35
2	B	201	7MT	C16-N17-C10	3.35	121.23	118.70
2	B	201	7MT	C19-C11-N23	-3.25	119.42	121.74
2	B	201	7MT	O27-C18-O28	-3.14	120.37	125.35
2	C	201	7MT	O26-C24-O25	-2.99	120.60	125.35
2	B	201	7MT	C13-C10-N17	-2.98	119.61	121.74
2	B	201	7MT	O27-C18-C16	2.77	119.27	115.69
2	C	201	7MT	O27-C18-C16	2.50	118.92	115.69
2	C	201	7MT	C22-N23-C11	2.35	120.47	118.70
2	C	201	7MT	C19-C11-N23	-2.27	120.12	121.74
2	A	201	7MT	O27-C18-O28	-2.11	122.00	125.35
3	B	202	MLI	O7-C2-C1	2.07	120.93	114.51
2	C	201	7MT	C15-C16-N17	-2.04	119.33	121.40

There are no chirality outliers.

All (7) torsion outliers are listed below:

Mol	Chain	Res	Type	Atoms
3	B	202	MLI	C3-C1-C2-O7
3	B	202	MLI	C3-C1-C2-O6
3	A	202	MLI	C3-C1-C2-O6
3	C	202	MLI	C2-C1-C3-O9
3	A	202	MLI	C3-C1-C2-O7
3	C	202	MLI	C2-C1-C3-O8
3	C	202	MLI	C3-C1-C2-O6

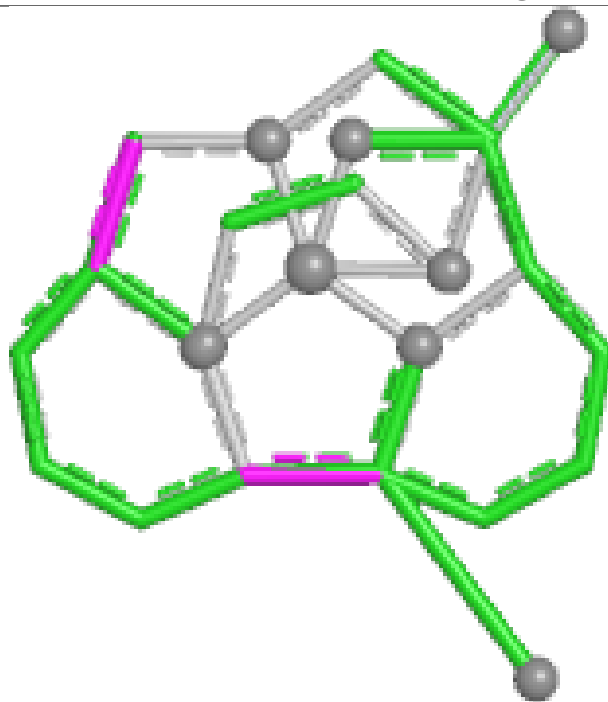
There are no ring outliers.

3 monomers are involved in 3 short contacts:

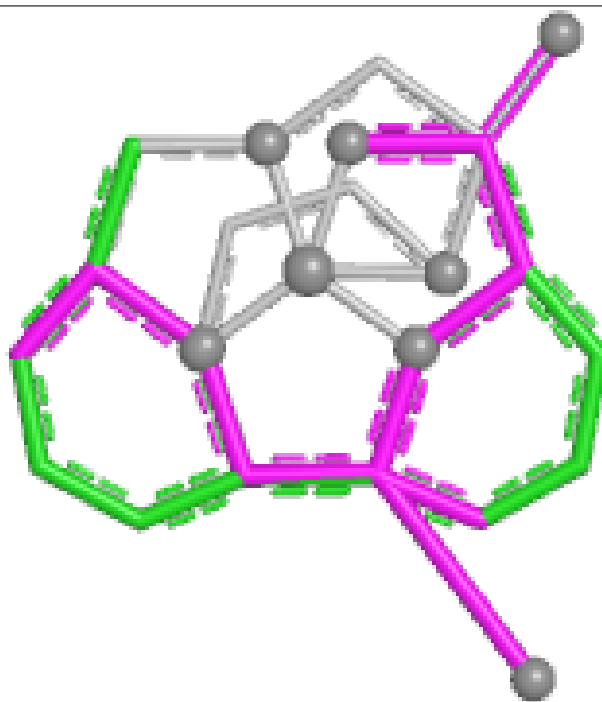
Mol	Chain	Res	Type	Clashes	Symm-Clashes
2	B	201	7MT	1	0
2	A	201	7MT	1	0
2	C	201	7MT	1	0

The following is a two-dimensional graphical depiction of Mogul quality analysis of bond lengths, bond angles, torsion angles, and ring geometry for all instances of the Ligand of Interest. In addition, ligands with molecular weight > 250 and outliers as shown on the validation Tables will also be included. For torsion angles, if less than 5% of the Mogul distribution of torsion angles is within 10 degrees of the torsion angle in question, then that torsion angle is considered an outlier. Any bond that is central to one or more torsion angles identified as an outlier by Mogul will be highlighted in the graph. For rings, the root-mean-square deviation (RMSD) between the ring in question and similar rings identified by Mogul is calculated over all ring torsion angles. If the average RMSD is greater than 60 degrees and the minimal RMSD between the ring in question and any Mogul-identified rings is also greater than 60 degrees, then that ring is considered an outlier. The outliers are highlighted in purple. The color gray indicates Mogul did not find sufficient equivalents in the CSD to analyse the geometry.

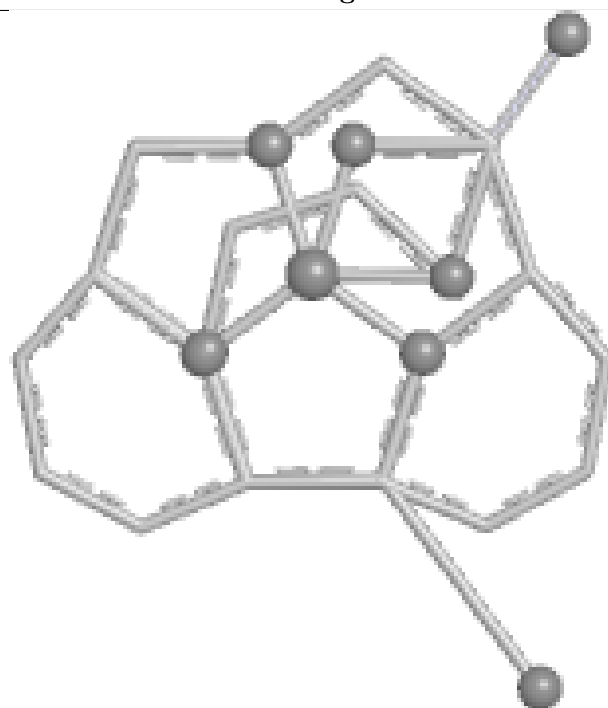
## Ligand 7MT B 201



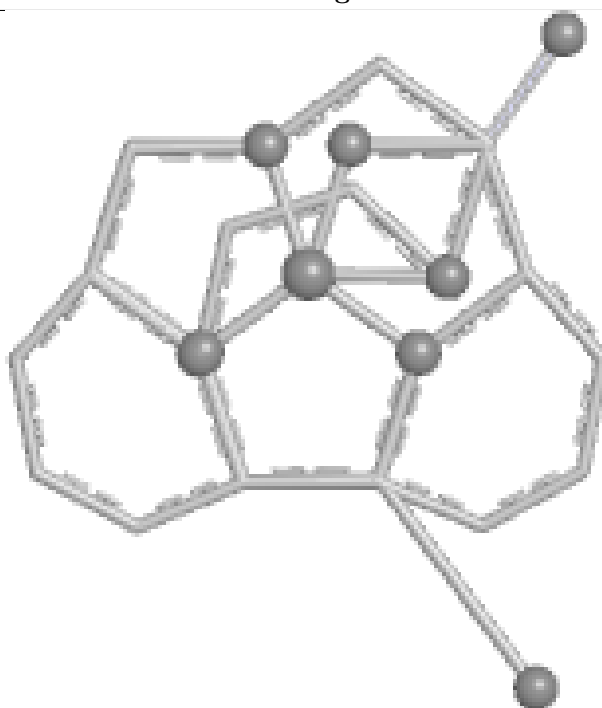
Bond lengths



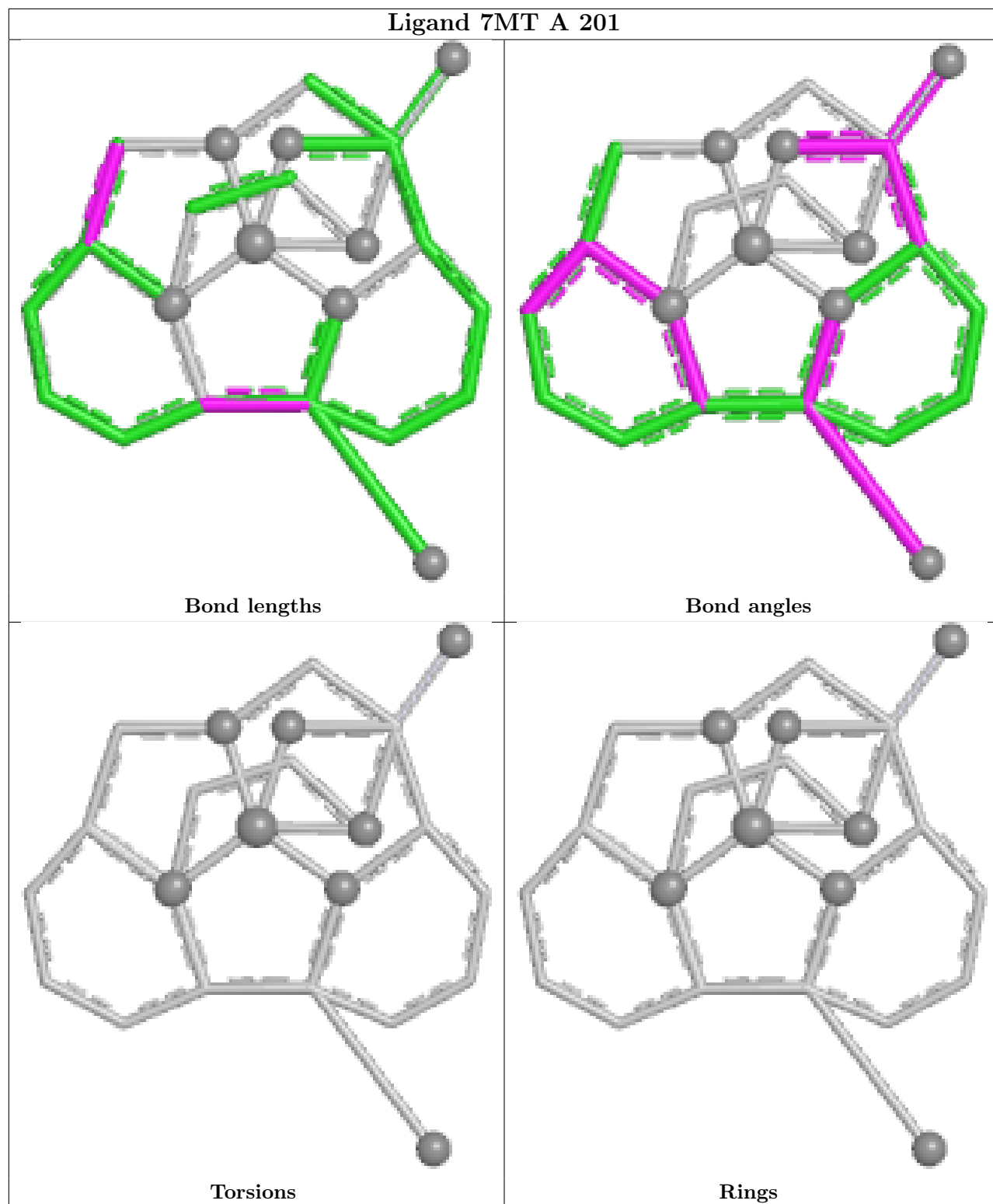
Bond angles



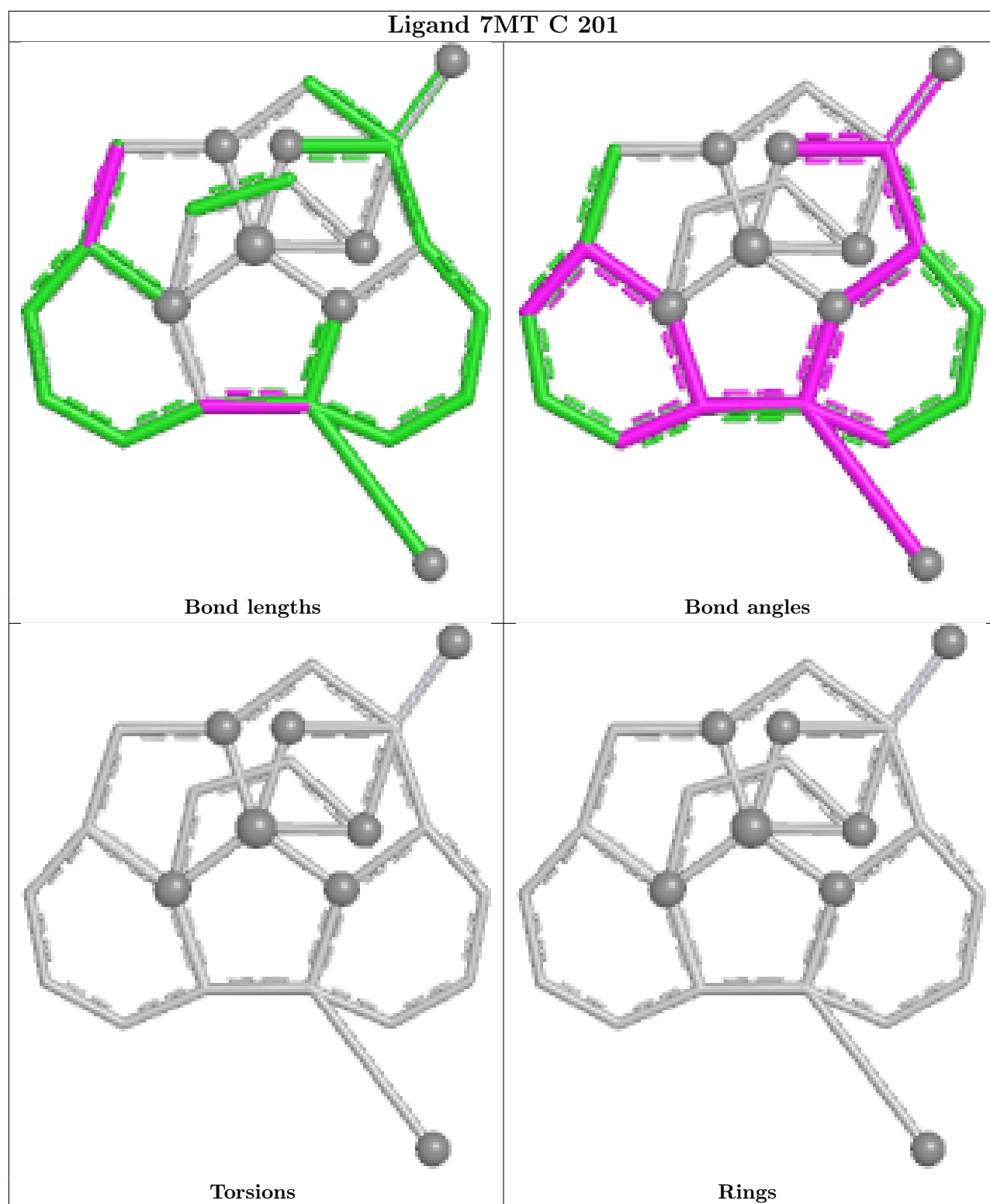
Torsions



Rings







## 5.7 Other polymers [i](#)

There are no such residues in this entry.

## 5.8 Polymer linkage issues ⓘ

There are no chain breaks in this entry.

## 6 Fit of model and data [i](#)

### 6.1 Protein, DNA and RNA chains [i](#)

In the following table, the column labelled ‘#RSRZ> 2’ contains the number (and percentage) of RSRZ outliers, followed by percent RSRZ outliers for the chain as percentile scores relative to all X-ray entries and entries of similar resolution. The OWAB column contains the minimum, median, 95<sup>th</sup> percentile and maximum values of the occupancy-weighted average B-factor per residue. The column labelled ‘Q< 0.9’ lists the number of (and percentage) of residues with an average occupancy less than 0.9.

Mol	Chain	Analysed	<RSRZ>	#RSRZ>2	OWAB(Å <sup>2</sup> )	Q<0.9
1	A	166/166 (100%)	-0.59	1 (0%) 89 88	23, 30, 47, 82	0
1	B	166/166 (100%)	-0.54	1 (0%) 89 88	26, 32, 53, 85	0
1	C	166/166 (100%)	-0.27	3 (1%) 68 66	29, 41, 66, 91	0
All	All	498/498 (100%)	-0.47	5 (1%) 82 81	23, 34, 57, 91	0

All (5) RSRZ outliers are listed below:

Mol	Chain	Res	Type	RSRZ
1	C	166	LYS	3.6
1	A	166	LYS	3.2
1	C	56	LYS	2.6
1	C	61	GLU	2.0
1	B	166	LYS	2.0

### 6.2 Non-standard residues in protein, DNA, RNA chains [i](#)

There are no non-standard protein/DNA/RNA residues in this entry.

### 6.3 Carbohydrates [i](#)

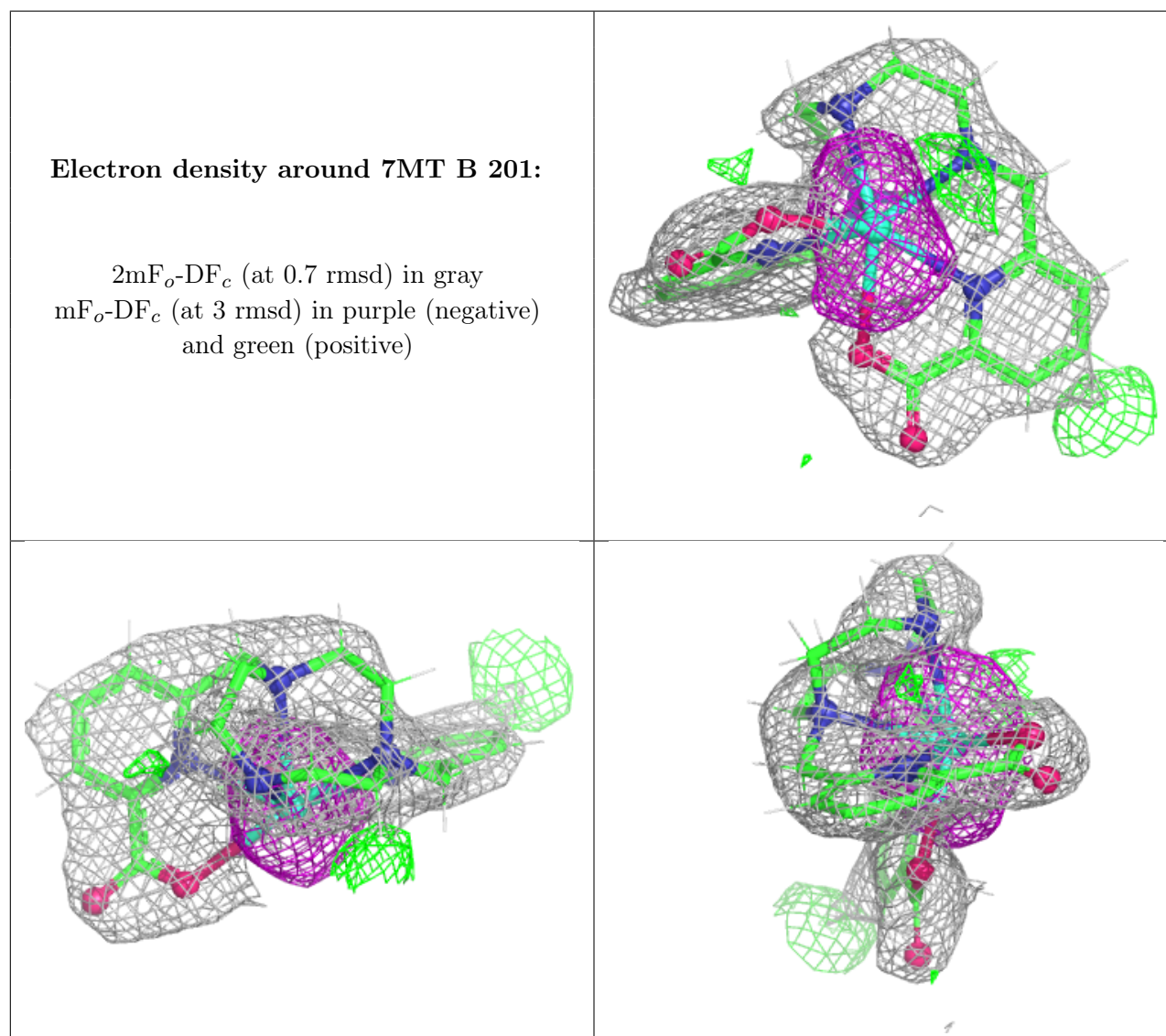
There are no monosaccharides in this entry.

### 6.4 Ligands [i](#)

In the following table, the Atoms column lists the number of modelled atoms in the group and the number defined in the chemical component dictionary. The B-factors column lists the minimum, median, 95<sup>th</sup> percentile and maximum values of B factors of atoms in the group. The column labelled ‘Q< 0.9’ lists the number of atoms with occupancy less than 0.9.

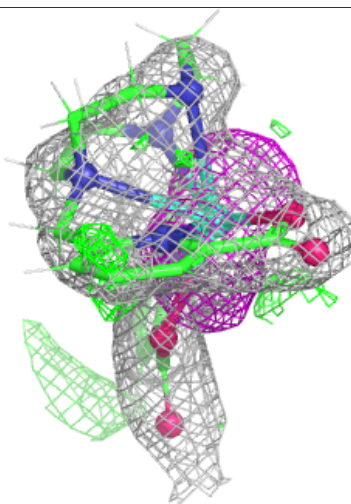
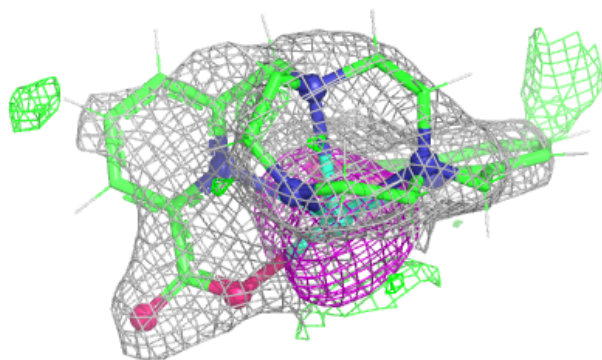
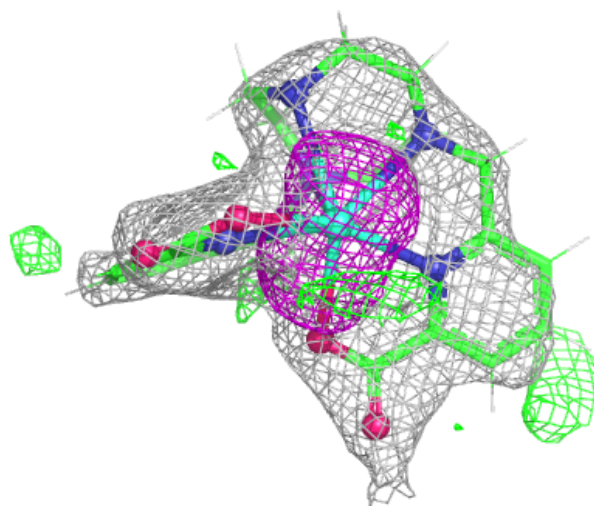
Mol	Type	Chain	Res	Atoms	RSCC	RSR	B-factors( $\text{\AA}^2$ )	Q<0.9
3	MLI	B	202	7/7	0.52	0.47	58,67,70,70	9
3	MLI	C	202	7/7	0.57	0.40	61,74,79,82	9
3	MLI	A	202	7/7	0.70	0.37	37,57,63,67	9
4	TB	A	203	1/1	0.95	0.05	64,64,64,64	1
2	7MT	B	201	30/30	0.96	0.21	38,51,56,58	53
2	7MT	C	201	30/30	0.96	0.24	37,60,66,67	53
2	7MT	A	201	30/30	0.96	0.15	29,46,50,51	53
4	TB	C	203	1/1	0.98	0.16	45,45,45,45	1
4	TB	B	203	1/1	0.99	0.14	43,43,43,43	1
4	TB	A	204	1/1	0.99	0.13	29,29,29,29	1

The following is a graphical depiction of the model fit to experimental electron density of all instances of the Ligand of Interest. In addition, ligands with molecular weight > 250 and outliers as shown on the geometry validation Tables will also be included. Each fit is shown from different orientation to approximate a three-dimensional view.



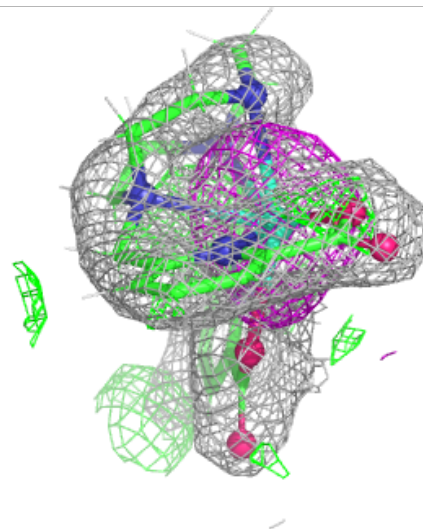
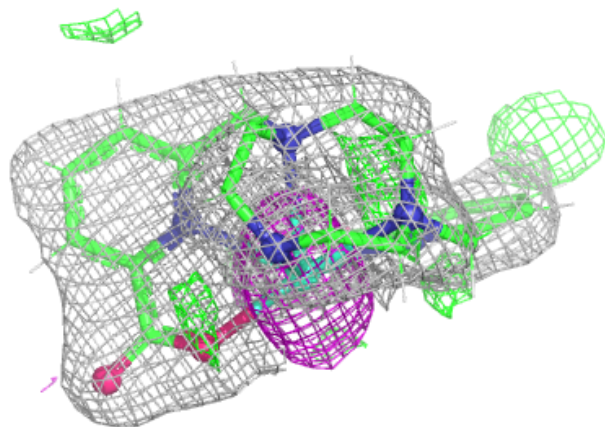
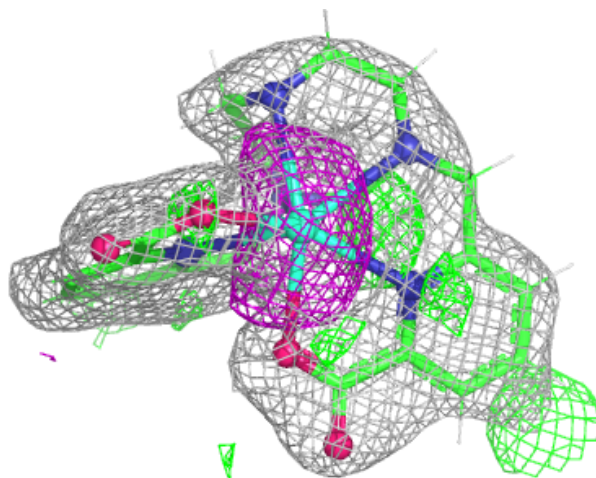
**Electron density around 7MT C 201:**

$2mF_o-DF_c$  (at 0.7 rmsd) in gray  
 $mF_o-DF_c$  (at 3 rmsd) in purple (negative)  
and green (positive)



**Electron density around 7MT A 201:**

$2mF_o-DF_c$  (at 0.7 rmsd) in gray  
 $mF_o-DF_c$  (at 3 rmsd) in purple (negative)  
and green (positive)



## 6.5 Other polymers ⓘ

There are no such residues in this entry.