



wwPDB X-ray Structure Validation Summary Report ⓘ

Nov 9, 2024 – 08:36 AM EST

PDB ID : 1HGJ
Title : BINDING OF INFLUENZA VIRUS HEMAGGLUTININ TO ANALOGS OF ITS CELL-SURFACE RECEPTOR, SIALIC ACID: ANALYSIS BY PROTON NUCLEAR MAGNETIC RESONANCE SPECTROSCOPY AND X-RAY CRYSTALLOGRAPHY
Authors : Sauter, N.K.; Hanson, J.E.; Glick, G.D.; Brown, J.H.; Crowther, R.L.; Park, S.-J.; Skehel, J.J.; Wiley, D.C.
Deposited on : 1991-11-01
Resolution : 2.70 Å(reported)

This is a wwPDB X-ray Structure Validation Summary Report for a publicly released PDB entry.

We welcome your comments at validation@mail.wwpdb.org

A user guide is available at

<https://www.wwpdb.org/validation/2017/XrayValidationReportHelp>

with specific help available everywhere you see the ⓘ symbol.

The types of validation reports are described at

<https://www.wwpdb.org/validation/2017/FAQs#types>.

The following versions of software and data (see [references ⓘ](#)) were used in the production of this report:

MolProbity	:	4.02b-467
Mogul	:	2022.3.0, CSD as543be (2022)
Xtriage (Phenix)	:	1.20.1
EDS	:	3.0
buster-report	:	1.1.7 (2018)
Percentile statistics	:	20231227.v01 (using entries in the PDB archive December 27th 2023)
CCP4	:	9.0.003 (Gargrove)
Density-Fitness	:	1.0.11
Ideal geometry (proteins)	:	Engh & Huber (2001)

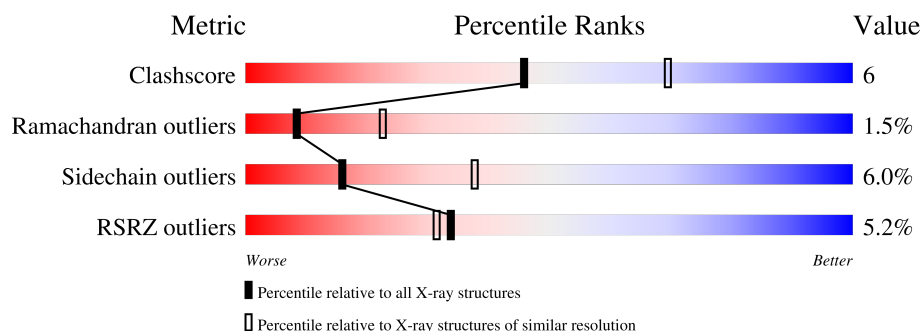
1 Overall quality at a glance

The following experimental techniques were used to determine the structure:

X-RAY DIFFRACTION

The reported resolution of this entry is 2.70 Å.

Percentile scores (ranging between 0-100) for global validation metrics of the entry are shown in the following graphic. The table shows the number of entries on which the scores are based.



Metric	Whole archive (#Entries)	Similar resolution (#Entries, resolution range(Å))
Clashscore	180529	3684 (2.70-2.70)
Ramachandran outliers	177936	3633 (2.70-2.70)
Sidechain outliers	177891	3633 (2.70-2.70)
RSRZ outliers	164620	3333 (2.70-2.70)

The table below summarises the geometric issues observed across the polymeric chains and their fit to the electron density. The red, orange, yellow and green segments of the lower bar indicate the fraction of residues that contain outliers for ≥ 3 , 2, 1 and 0 types of geometric quality criteria respectively. A grey segment represents the fraction of residues that are not modelled. The numeric value for each fraction is indicated below the corresponding segment, with a dot representing fractions $\leq 5\%$. The upper red bar (where present) indicates the fraction of residues that have poor fit to the electron density. The numeric value is given above the bar.

Mol	Chain	Length	Quality of chain
1	A	328	<div> <div>5%</div> <div> <div></div> <div>76%</div> <div>20%</div> <div>• •</div> </div> </div>
1	C	328	<div> <div>4%</div> <div> <div></div> <div>76%</div> <div>21%</div> <div>•</div> </div> </div>
1	E	328	<div> <div>6%</div> <div> <div></div> <div>76%</div> <div>20%</div> <div>• •</div> </div> </div>
2	B	175	<div> <div>5%</div> <div> <div></div> <div>77%</div> <div>17%</div> <div>5%</div> <div>•</div> </div> </div>
2	D	175	<div> <div>5%</div> <div> <div></div> <div>79%</div> <div>15%</div> <div>5%</div> <div>•</div> </div> </div>

Continued on next page...

Ideal geometry (DNA, RNA) : Parkinson et al. (1996)
Validation Pipeline (wwPDB-VP) : 2.39

Continued from previous page...

Mol	Chain	Length	Quality of chain
2	F	175	<div><div></div><div>7%</div><div>77%</div><div>18%</div><div>5%</div></div>
3	G	3	<div><div></div><div>33%</div><div>67%</div></div>
3	H	3	<div><div></div><div>100%</div></div>
3	I	3	<div><div></div><div>100%</div></div>

2 Entry composition [i](#)

There are 6 unique types of molecules in this entry. The entry contains 15519 atoms, of which 3237 are hydrogens and 0 are deuteriums.

In the tables below, the ZeroOcc column contains the number of atoms modelled with zero occupancy, the AltConf column contains the number of residues with at least one atom in alternate conformation and the Trace column contains the number of residues modelled with at most 2 atoms.

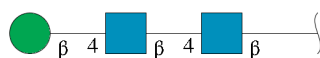
- Molecule 1 is a protein called HEMAGGLUTININ, CHAIN HA1.

Mol	Chain	Residues	Atoms						ZeroOcc	AltConf	Trace
1	A	328	Total	C	H	N	O	S	0	0	0
			3120	1581	588	445	493	13			
1	C	328	Total	C	H	N	O	S	0	0	0
			3120	1581	588	445	493	13			
1	E	328	Total	C	H	N	O	S	0	0	0
			3120	1581	588	445	493	13			

- Molecule 2 is a protein called HEMAGGLUTININ, CHAIN HA1.

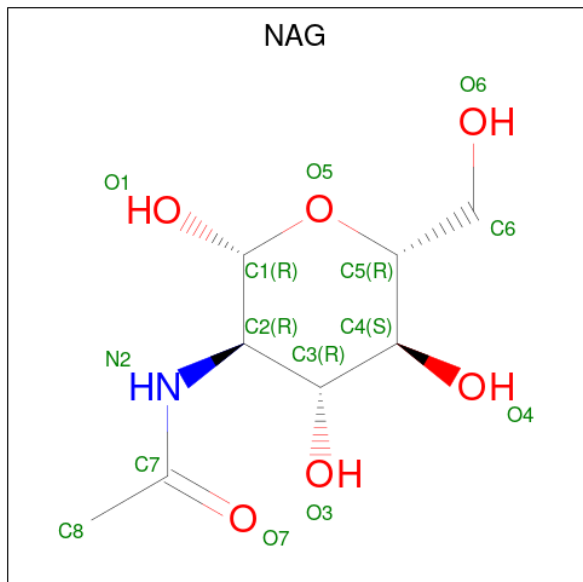
Mol	Chain	Residues	Atoms						ZeroOcc	AltConf	Trace
2	B	175	Total	C	H	N	O	S	0	0	0
			1752	882	331	250	283	6			
2	D	175	Total	C	H	N	O	S	0	0	0
			1752	882	331	250	283	6			
2	F	175	Total	C	H	N	O	S	0	0	0
			1752	882	331	250	283	6			

- Molecule 3 is an oligosaccharide called beta-D-mannopyranose-(1-4)-2-acetamido-2-deoxy-beta-D-glucopyranose-(1-4)-2-acetamido-2-deoxy-beta-D-glucopyranose.



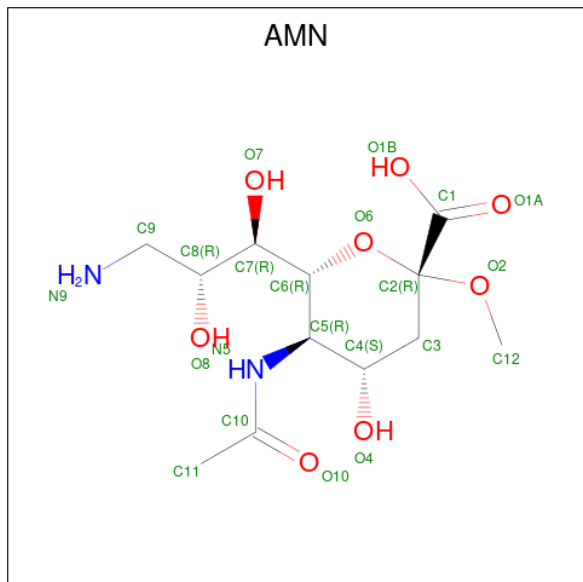
Mol	Chain	Residues	Atoms						ZeroOcc	AltConf	Trace
3	G	3	Total	C	H	N	O		0	0	0
			76	22	37	2	15				
3	H	3	Total	C	H	N	O		0	0	0
			76	22	37	2	15				
3	I	3	Total	C	H	N	O		0	0	0
			76	22	37	2	15				

- Molecule 4 is 2-acetamido-2-deoxy-beta-D-glucopyranose (three-letter code: NAG) (formula: $C_8H_{15}NO_6$).



Mol	Chain	Residues	Atoms					ZeroOcc	AltConf
4	A	1	Total	C	H	N	O	0	0
			28	8	14	1	5		
4	A	1	Total	C	H	N	O	0	0
			28	8	14	1	5		
4	A	1	Total	C	H	N	O	0	0
			28	8	14	1	5		
4	B	1	Total	C	H	N	O	0	0
			28	8	14	1	5		
4	C	1	Total	C	H	N	O	0	0
			28	8	14	1	5		
4	C	1	Total	C	H	N	O	0	0
			28	8	14	1	5		
4	C	1	Total	C	H	N	O	0	0
			28	8	14	1	5		
4	D	1	Total	C	H	N	O	0	0
			28	8	14	1	5		
4	E	1	Total	C	H	N	O	0	0
			28	8	14	1	5		
4	E	1	Total	C	H	N	O	0	0
			28	8	14	1	5		
4	E	1	Total	C	H	N	O	0	0
			28	8	14	1	5		
4	F	1	Total	C	H	N	O	0	0
			28	8	14	1	5		

- Molecule 5 is methyl 5-acetamido-9-amino-3,5,9-trideoxy-D-glycero- α -D-galacto-non-2-ulopyranosidonic acid (three-letter code: AMN) (formula: $C_{12}H_{22}N_2O_8$).



Mol	Chain	Residues	Atoms					ZeroOcc	AltConf
5	A	1	Total	C	H	N	O	0	0
			41	12	19	2	8		
5	C	1	Total	C	H	N	O	0	0
			41	12	19	2	8		
5	E	1	Total	C	H	N	O	0	0
			41	12	19	2	8		

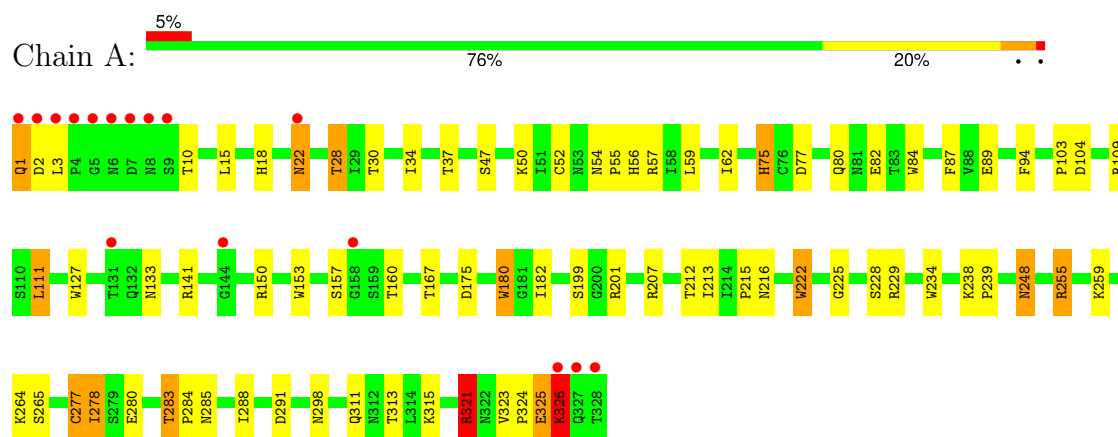
- Molecule 6 is water.

Mol	Chain	Residues	Atoms			ZeroOcc	AltConf
6	A	12	Total	H	O	0	0
			36	24	12		
6	B	12	Total	H	O	0	0
			36	24	12		
6	C	11	Total	H	O	0	0
			33	22	11		
6	D	13	Total	H	O	0	0
			39	26	13		
6	E	11	Total	H	O	0	0
			33	22	11		
6	F	13	Total	H	O	0	0
			39	26	13		

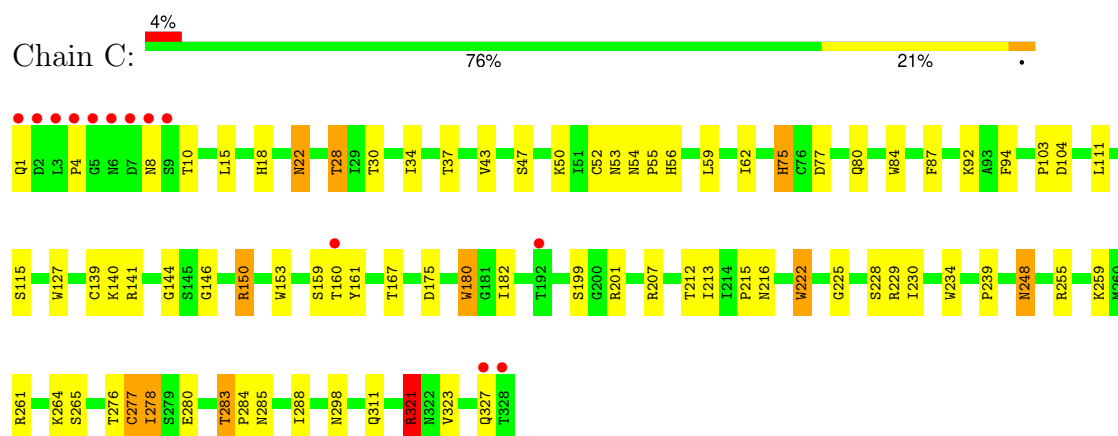
3 Residue-property plots [i](#)

These plots are drawn for all protein, RNA, DNA and oligosaccharide chains in the entry. The first graphic for a chain summarises the proportions of the various outlier classes displayed in the second graphic. The second graphic shows the sequence view annotated by issues in geometry and electron density. Residues are color-coded according to the number of geometric quality criteria for which they contain at least one outlier: green = 0, yellow = 1, orange = 2 and red = 3 or more. A red dot above a residue indicates a poor fit to the electron density ($RSRZ > 2$). Stretches of 2 or more consecutive residues without any outlier are shown as a green connector. Residues present in the sample, but not in the model, are shown in grey.

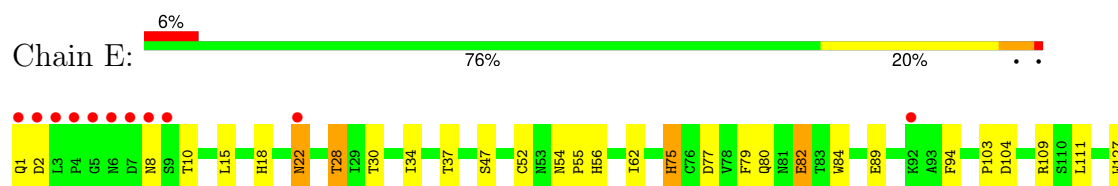
• Molecule 1: HEMAGGLUTININ, CHAIN HA1

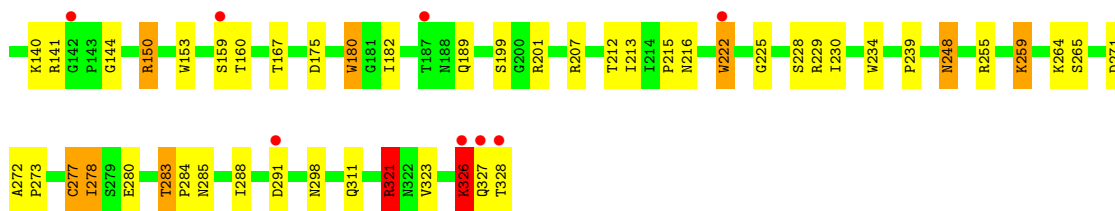


• Molecule 1: HEMAGGLUTININ, CHAIN HA1

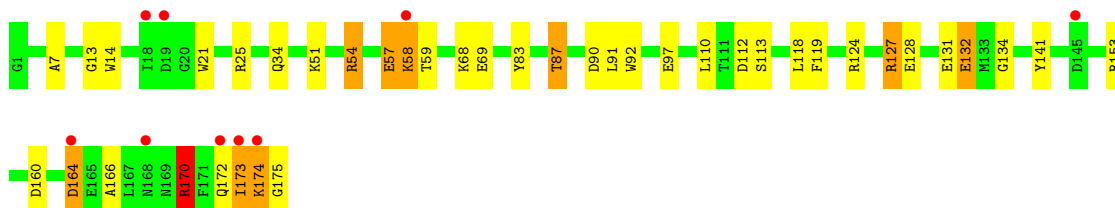
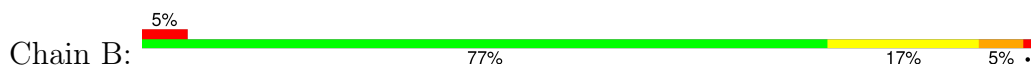


• Molecule 1: HEMAGGLUTININ, CHAIN HA1

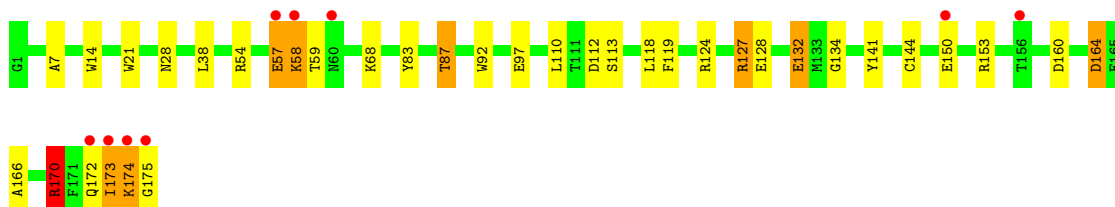
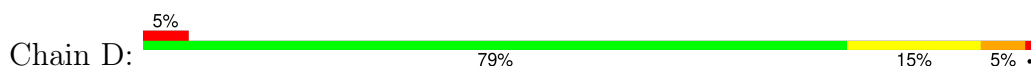




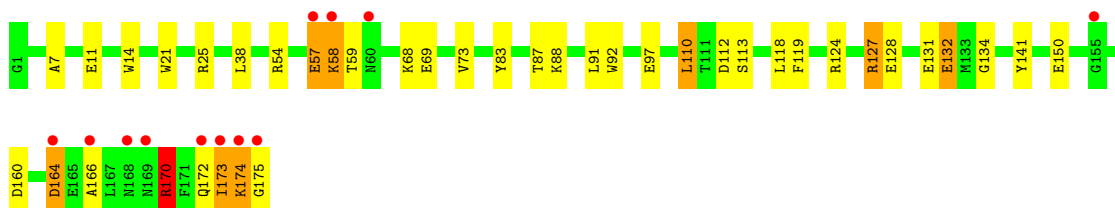
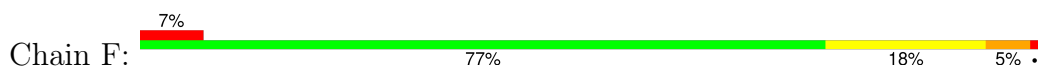
• Molecule 2: HEMAGGLUTININ, CHAIN HA1



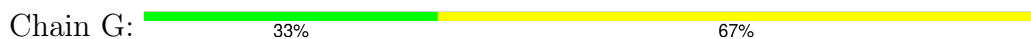
• Molecule 2: HEMAGGLUTININ, CHAIN HA1



• Molecule 2: HEMAGGLUTININ, CHAIN HA1



• Molecule 3: beta-D-mannopyranose-(1-4)-2-acetamido-2-deoxy-beta-D-glucopyranose-(1-4)-2-acetamido-2-deoxy-beta-D-glucopyranose




• Molecule 3: beta-D-mannopyranose-(1-4)-2-acetamido-2-deoxy-beta-D-glucopyranose-(1-4)-2-acetamido-2-deoxy-beta-D-glucopyranose

Chain H:  100%

MAG1
MAG2
BMA3

- Molecule 3: beta-D-mannopyranose-(1-4)-2-acetamido-2-deoxy-beta-D-glucopyranose-(1-4)-2-acetamido-2-deoxy-beta-D-glucopyranose

Chain I:  100%

MAG1
MAG2
BMA3

4 Data and refinement statistics

Property	Value	Source
Space group	P 41	Depositor
Cell constants a, b, c, α , β , γ	162.80Å 162.80Å 177.50Å 90.00° 90.00° 90.00°	Depositor
Resolution (Å)	7.00 – 2.70 7.00 – 2.70	Depositor EDS
% Data completeness (in resolution range)	(Not available) (7.00-2.70) 57.9 (7.00-2.70)	Depositor EDS
R_{merge}	(Not available)	Depositor
R_{sym}	(Not available)	Depositor
$\langle I/\sigma(I) \rangle$ ¹	1.98 (at 2.68Å)	Xtriage
Refinement program	X-PLOR	Depositor
R, R_{free}	0.220 , (Not available) 0.209 , (Not available)	Depositor DCC
R_{free} test set	No test flags present.	wwPDB-VP
Wilson B-factor (Å ²)	36.8	Xtriage
Anisotropy	0.158	Xtriage
Bulk solvent k_{sol} (e/Å ³), B_{sol} (Å ²)	0.28 , 43.7	EDS
L-test for twinning ²	$\langle L \rangle = 0.48$, $\langle L^2 \rangle = 0.32$	Xtriage
Estimated twinning fraction	0.026 for h,-k,-l	Xtriage
F_o, F_c correlation	0.89	EDS
Total number of atoms	15519	wwPDB-VP
Average B, all atoms (Å ²)	23.0	wwPDB-VP

Xtriage's analysis on translational NCS is as follows: *The largest off-origin peak in the Patterson function is 3.06% of the height of the origin peak. No significant pseudotranslation is detected.*

¹Intensities estimated from amplitudes.

²Theoretical values of $\langle |L| \rangle$, $\langle L^2 \rangle$ for acentric reflections are 0.5, 0.333 respectively for untwinned datasets, and 0.375, 0.2 for perfectly twinned datasets.

5 Model quality [i](#)

5.1 Standard geometry [i](#)

Bond lengths and bond angles in the following residue types are not validated in this section: NAG, AMN, BMA

The Z score for a bond length (or angle) is the number of standard deviations the observed value is removed from the expected value. A bond length (or angle) with $|Z| > 5$ is considered an outlier worth inspection. RMSZ is the root-mean-square of all Z scores of the bond lengths (or angles).

Mol	Chain	Bond lengths		Bond angles	
		RMSZ	$\# Z > 5$	RMSZ	$\# Z > 5$
1	A	0.89	0/2589	1.49	37/3527 (1.0%)
1	C	0.88	0/2589	1.48	38/3527 (1.1%)
1	E	0.91	0/2589	1.48	39/3527 (1.1%)
2	B	0.93	0/1445	1.46	20/1939 (1.0%)
2	D	0.95	0/1445	1.48	18/1939 (0.9%)
2	F	0.93	0/1445	1.45	19/1939 (1.0%)
All	All	0.91	0/12102	1.48	171/16398 (1.0%)

There are no bond length outliers.

The worst 5 of 171 bond angle outliers are listed below:

Mol	Chain	Res	Type	Atoms	Z	Observed(°)	Ideal(°)
1	E	321	ARG	NE-CZ-NH2	-16.45	112.08	120.30
1	C	321	ARG	NE-CZ-NH2	-15.12	112.74	120.30
1	A	321	ARG	NE-CZ-NH2	-14.77	112.92	120.30
1	A	321	ARG	NE-CZ-NH1	13.41	127.00	120.30
1	E	321	ARG	NE-CZ-NH1	12.89	126.75	120.30

There are no chirality outliers.

There are no planarity outliers.

5.2 Too-close contacts [i](#)

In the following table, the Non-H and H(model) columns list the number of non-hydrogen atoms and hydrogen atoms in the chain respectively. The H(added) column lists the number of hydrogen atoms added and optimized by MolProbity. The Clashes column lists the number of clashes within the asymmetric unit, whereas Symm-Clashes lists symmetry-related clashes.

Mol	Chain	Non-H	H(model)	H(added)	Clashes	Symm-Clashes
1	A	2532	588	2473	31	0
1	C	2532	588	2473	31	0
1	E	2532	588	2473	33	0
2	B	1421	331	1345	24	0
2	D	1421	331	1345	21	0
2	F	1421	331	1345	24	0
3	G	39	37	34	1	0
3	H	39	37	34	1	0
3	I	39	37	34	1	0
4	A	42	42	39	0	0
4	B	14	14	13	0	0
4	C	42	42	39	0	0
4	D	14	14	13	0	0
4	E	42	42	39	0	0
4	F	14	14	13	0	0
5	A	22	19	21	0	0
5	C	22	19	21	0	0
5	E	22	19	21	0	0
6	A	12	24	0	0	0
6	B	12	24	0	2	0
6	C	11	22	0	0	0
6	D	13	26	0	2	0
6	E	11	22	0	0	0
6	F	13	26	0	2	0
All	All	12282	3237	11775	136	0

The all-atom clashscore is defined as the number of clashes found per 1000 atoms (including hydrogen atoms). The all-atom clashscore for this structure is 6.

The worst 5 of 136 close contacts within the same asymmetric unit are listed below, sorted by their clash magnitude.

Atom-1	Atom-2	Interatomic distance (Å)	Clash overlap (Å)
1:C:216:ASN:HB3	1:E:212:THR:HG21	1.65	0.78
2:B:83:TYR:O	2:B:87:THR:HG23	1.86	0.74
1:E:321:ARG:HG2	1:E:321:ARG:HH11	1.53	0.73
2:D:83:TYR:O	2:D:87:THR:HG23	1.89	0.72
2:F:58:LYS:HE2	2:F:59:THR:O	1.90	0.72

There are no symmetry-related clashes.

5.3 Torsion angles [i](#)

5.3.1 Protein backbone [i](#)

In the following table, the Percentiles column shows the percent Ramachandran outliers of the chain as a percentile score with respect to all X-ray entries followed by that with respect to entries of similar resolution.

The Analysed column shows the number of residues for which the backbone conformation was analysed, and the total number of residues.

Mol	Chain	Analysed	Favoured	Allowed	Outliers	Percentiles	
1	A	326/328 (99%)	307 (94%)	14 (4%)	5 (2%)	8	22
1	C	326/328 (99%)	307 (94%)	15 (5%)	4 (1%)	11	28
1	E	326/328 (99%)	310 (95%)	14 (4%)	2 (1%)	22	45
2	B	173/175 (99%)	162 (94%)	7 (4%)	4 (2%)	5	14
2	D	173/175 (99%)	162 (94%)	7 (4%)	4 (2%)	5	14
2	F	173/175 (99%)	162 (94%)	7 (4%)	4 (2%)	5	14
All	All	1497/1509 (99%)	1410 (94%)	64 (4%)	23 (2%)	8	22

5 of 23 Ramachandran outliers are listed below:

Mol	Chain	Res	Type
1	A	3	LEU
1	A	326	LYS
2	B	58	LYS
2	B	173	ILE
1	C	327	GLN

5.3.2 Protein sidechains [i](#)

In the following table, the Percentiles column shows the percent sidechain outliers of the chain as a percentile score with respect to all X-ray entries followed by that with respect to entries of similar resolution.

The Analysed column shows the number of residues for which the sidechain conformation was analysed, and the total number of residues.

Mol	Chain	Analysed	Rotameric	Outliers	Percentiles	
1	A	289/289 (100%)	268 (93%)	21 (7%)	11	29
1	C	289/289 (100%)	269 (93%)	20 (7%)	13	31
1	E	289/289 (100%)	265 (92%)	24 (8%)	9	22

Continued on next page...

Continued from previous page...

Mol	Chain	Analysed	Rotameric	Outliers	Percentiles	
2	B	149/149 (100%)	145 (97%)	4 (3%)	40	69
2	D	149/149 (100%)	144 (97%)	5 (3%)	32	61
2	F	149/149 (100%)	144 (97%)	5 (3%)	32	61
All	All	1314/1314 (100%)	1235 (94%)	79 (6%)	16	38

5 of 79 residues with a non-rotameric sidechain are listed below:

Mol	Chain	Res	Type
1	E	141	ARG
1	E	321	ARG
1	E	159	SER
1	E	259	LYS
2	F	127	ARG

Sometimes sidechains can be flipped to improve hydrogen bonding and reduce clashes. 5 of 8 such sidechains are listed below:

Mol	Chain	Res	Type
1	E	171	ASN
2	D	12	ASN
1	C	132	GLN
2	B	28	ASN
1	C	171	ASN

5.3.3 RNA ⓘ

There are no RNA molecules in this entry.

5.4 Non-standard residues in protein, DNA, RNA chains ⓘ

There are no non-standard protein/DNA/RNA residues in this entry.

5.5 Carbohydrates ⓘ

9 monosaccharides are modelled in this entry.

In the following table, the Counts columns list the number of bonds (or angles) for which Mogul statistics could be retrieved, the number of bonds (or angles) that are observed in the model and the number of bonds (or angles) that are defined in the Chemical Component Dictionary. The Link column lists molecule types, if any, to which the group is linked. The Z score for a bond

length (or angle) is the number of standard deviations the observed value is removed from the expected value. A bond length (or angle) with $|Z| > 2$ is considered an outlier worth inspection. RMSZ is the root-mean-square of all Z scores of the bond lengths (or angles).

Mol	Type	Chain	Res	Link	Bond lengths			Bond angles		
					Counts	RMSZ	$\# Z > 2$	Counts	RMSZ	$\# Z > 2$
3	NAG	G	1	3,1	14,14,15	0.48	0	17,19,21	0.85	0
3	NAG	G	2	3	14,14,15	0.54	0	17,19,21	1.06	1 (5%)
3	BMA	G	3	3	11,11,12	0.64	0	15,15,17	0.99	0
3	NAG	H	1	3,1	14,14,15	0.78	0	17,19,21	0.90	0
3	NAG	H	2	3	14,14,15	0.35	0	17,19,21	1.03	1 (5%)
3	BMA	H	3	3	11,11,12	0.50	0	15,15,17	1.03	1 (6%)
3	NAG	I	1	3,1	14,14,15	0.64	0	17,19,21	0.94	0
3	NAG	I	2	3	14,14,15	0.44	0	17,19,21	0.98	1 (5%)
3	BMA	I	3	3	11,11,12	0.79	0	15,15,17	1.01	1 (6%)

In the following table, the Chirals column lists the number of chiral outliers, the number of chiral centers analysed, the number of these observed in the model and the number defined in the Chemical Component Dictionary. Similar counts are reported in the Torsion and Rings columns. '-' means no outliers of that kind were identified.

Mol	Type	Chain	Res	Link	Chirals	Torsions	Rings
3	NAG	G	1	3,1	-	1/6/23/26	0/1/1/1
3	NAG	G	2	3	-	0/6/23/26	0/1/1/1
3	BMA	G	3	3	-	0/2/19/22	0/1/1/1
3	NAG	H	1	3,1	-	1/6/23/26	0/1/1/1
3	NAG	H	2	3	-	0/6/23/26	0/1/1/1
3	BMA	H	3	3	-	0/2/19/22	0/1/1/1
3	NAG	I	1	3,1	-	1/6/23/26	0/1/1/1
3	NAG	I	2	3	-	0/6/23/26	0/1/1/1
3	BMA	I	3	3	-	0/2/19/22	0/1/1/1

There are no bond length outliers.

All (5) bond angle outliers are listed below:

Mol	Chain	Res	Type	Atoms	Z	Observed(°)	Ideal(°)
3	G	2	NAG	C4-C3-C2	-2.85	106.84	111.02
3	I	2	NAG	C4-C3-C2	-2.61	107.19	111.02
3	H	2	NAG	C4-C3-C2	-2.54	107.29	111.02
3	H	3	BMA	C1-O5-C5	2.29	115.25	112.19
3	I	3	BMA	C2-C3-C4	-2.20	106.99	110.86

There are no chirality outliers.

All (3) torsion outliers are listed below:

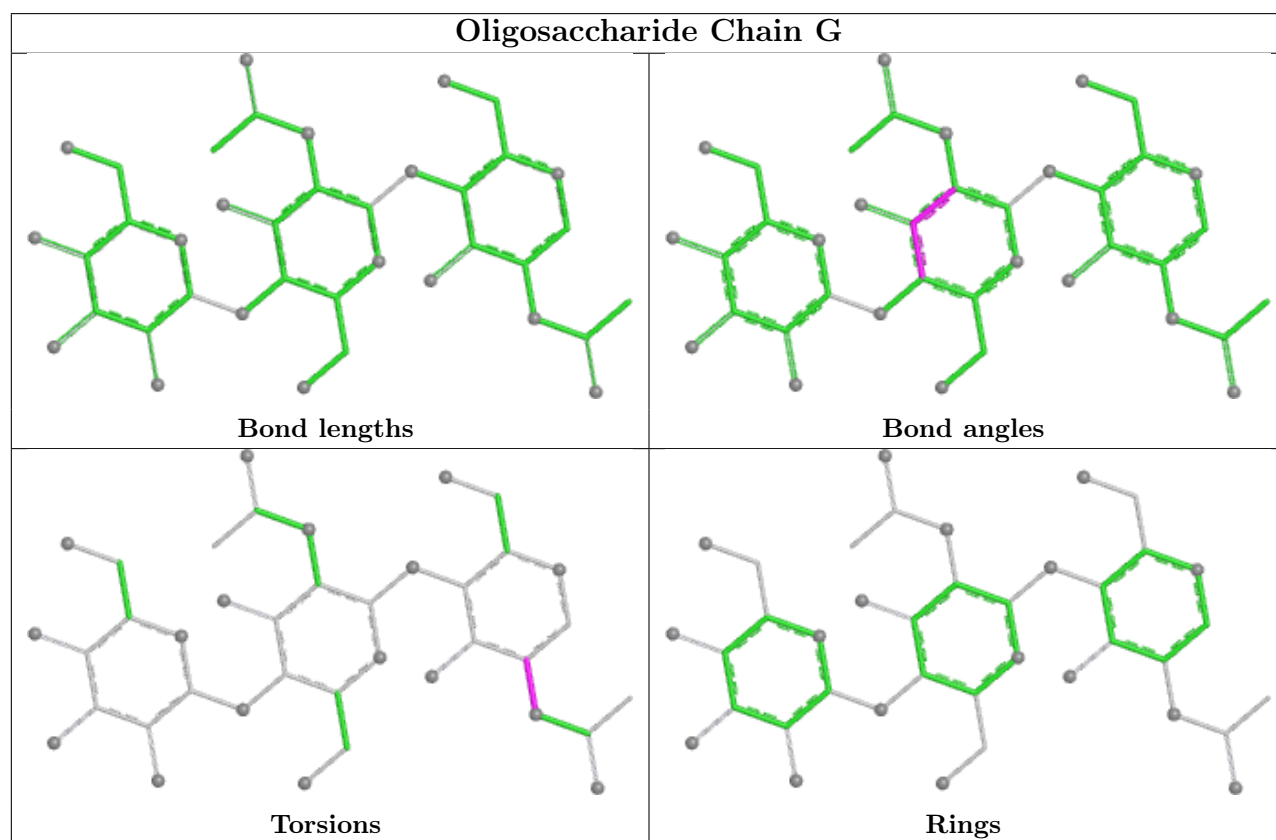
Mol	Chain	Res	Type	Atoms
3	G	1	NAG	C1-C2-N2-C7
3	H	1	NAG	C1-C2-N2-C7
3	I	1	NAG	C1-C2-N2-C7

There are no ring outliers.

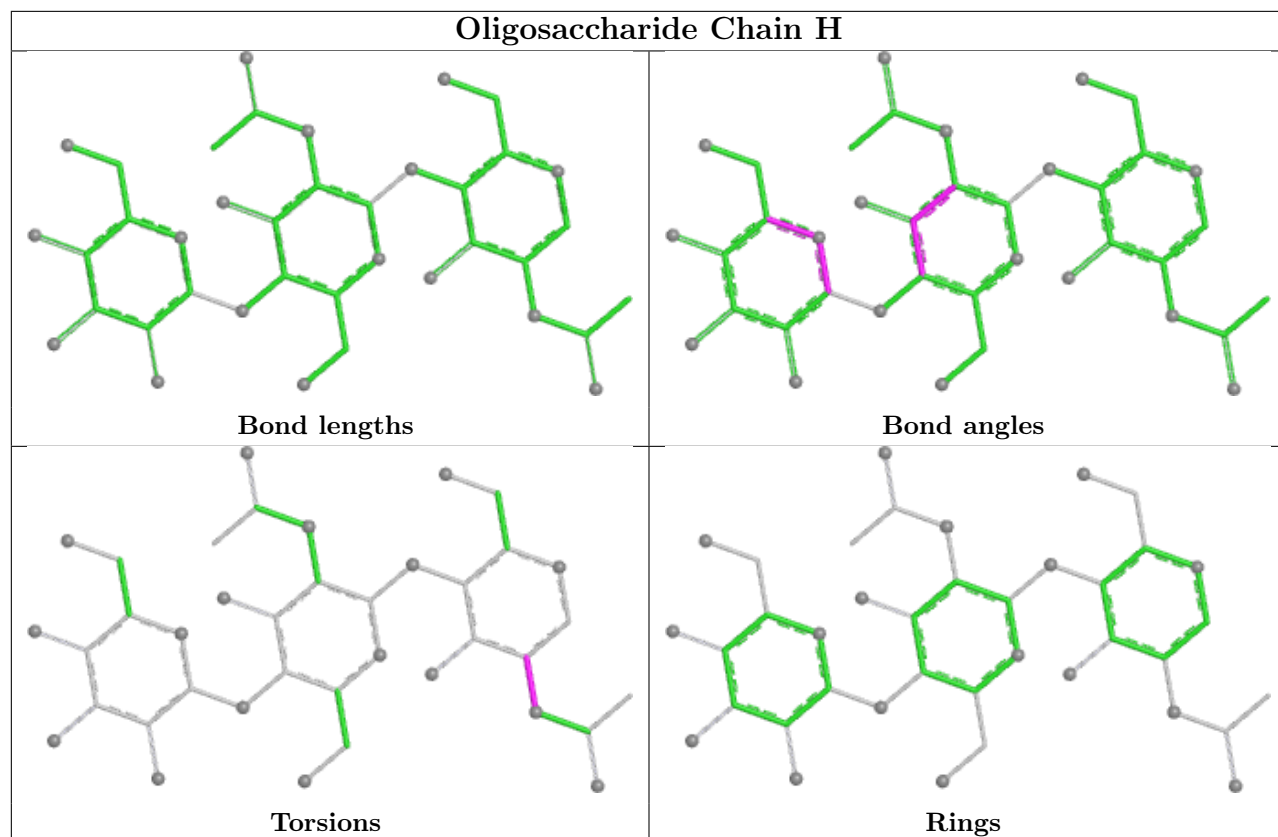
3 monomers are involved in 3 short contacts:

Mol	Chain	Res	Type	Clashes	Symm-Clashes
3	G	1	NAG	1	0
3	H	1	NAG	1	0
3	I	1	NAG	1	0

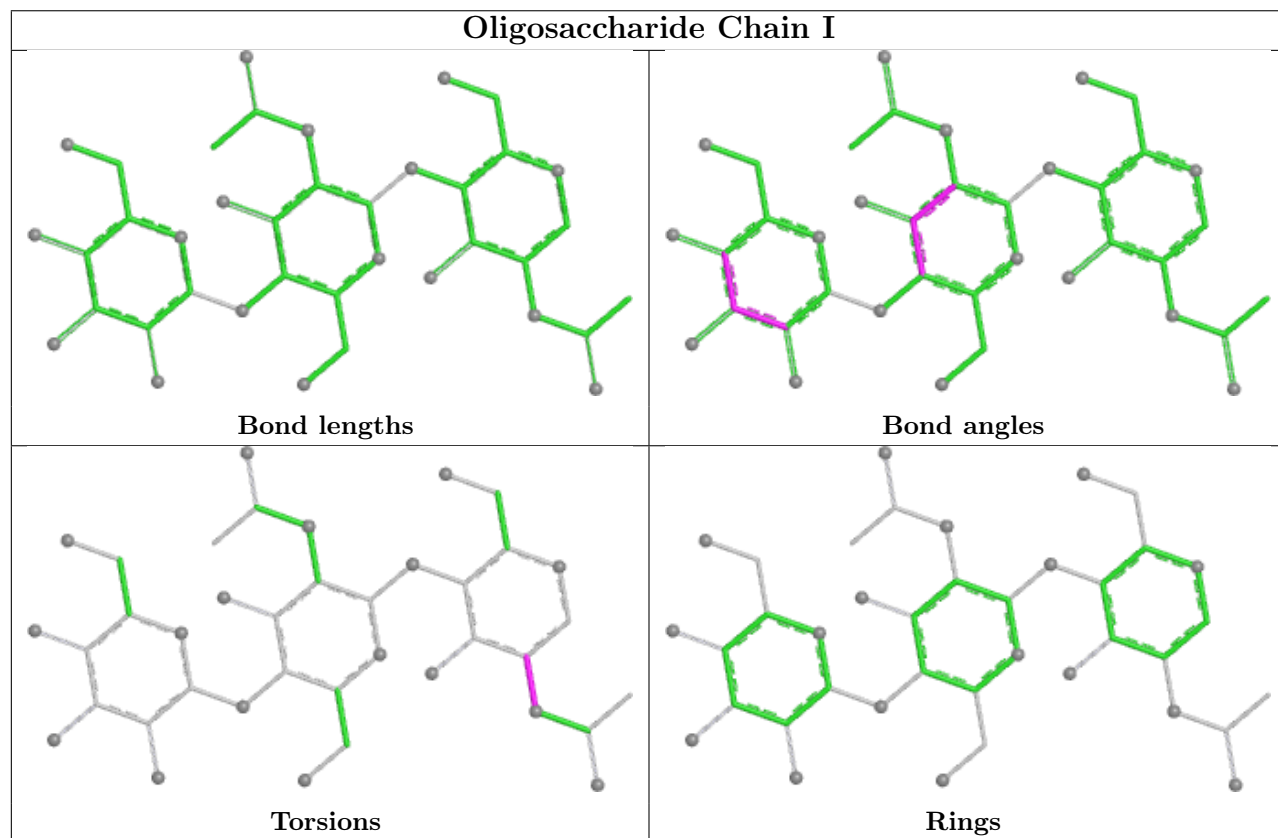
The following is a two-dimensional graphical depiction of Mogul quality analysis of bond lengths, bond angles, torsion angles, and ring geometry for oligosaccharide.



Oligosaccharide Chain H



Oligosaccharide Chain I



5.6 Ligand geometry

15 ligands are modelled in this entry.

In the following table, the Counts columns list the number of bonds (or angles) for which Mogul statistics could be retrieved, the number of bonds (or angles) that are observed in the model and the number of bonds (or angles) that are defined in the Chemical Component Dictionary. The Link column lists molecule types, if any, to which the group is linked. The Z score for a bond length (or angle) is the number of standard deviations the observed value is removed from the expected value. A bond length (or angle) with $|Z| > 2$ is considered an outlier worth inspection. RMSZ is the root-mean-square of all Z scores of the bond lengths (or angles).

Mol	Type	Chain	Res	Link	Bond lengths			Bond angles		
					Counts	RMSZ	# Z > 2	Counts	RMSZ	# Z > 2
4	NAG	D	401	2	14,14,15	0.94	1 (7%)	17,19,21	1.41	1 (5%)
4	NAG	E	348	1	14,14,15	0.64	0	17,19,21	1.55	3 (17%)
4	NAG	F	401	2	14,14,15	0.79	1 (7%)	17,19,21	1.44	1 (5%)
4	NAG	C	334	1	14,14,15	0.89	0	17,19,21	1.37	3 (17%)
5	AMN	A	349	-	21,22,22	1.03	2 (9%)	25,32,32	1.10	1 (4%)
4	NAG	A	334	1	14,14,15	0.92	1 (7%)	17,19,21	1.37	1 (5%)
4	NAG	C	348	1	14,14,15	0.71	0	17,19,21	1.65	4 (23%)
4	NAG	E	334	1	14,14,15	0.88	1 (7%)	17,19,21	1.36	3 (17%)
5	AMN	E	349	-	21,22,22	0.96	1 (4%)	25,32,32	1.11	1 (4%)
4	NAG	C	329	1	14,14,15	0.77	1 (7%)	17,19,21	0.92	1 (5%)
5	AMN	C	349	-	21,22,22	0.94	1 (4%)	25,32,32	1.11	1 (4%)
4	NAG	A	348	1	14,14,15	0.71	0	17,19,21	1.59	4 (23%)
4	NAG	E	329	1	14,14,15	0.71	0	17,19,21	0.96	1 (5%)
4	NAG	A	329	1	14,14,15	0.92	1 (7%)	17,19,21	0.90	1 (5%)
4	NAG	B	401	2	14,14,15	0.77	1 (7%)	17,19,21	1.42	1 (5%)

In the following table, the Chirals column lists the number of chiral outliers, the number of chiral centers analysed, the number of these observed in the model and the number defined in the Chemical Component Dictionary. Similar counts are reported in the Torsion and Rings columns. '-' means no outliers of that kind were identified.

Mol	Type	Chain	Res	Link	Chirals	Torsions	Rings
4	NAG	D	401	2	-	0/6/23/26	0/1/1/1
4	NAG	E	348	1	-	2/6/23/26	0/1/1/1
4	NAG	F	401	2	-	0/6/23/26	0/1/1/1
4	NAG	C	334	1	-	0/6/23/26	0/1/1/1
5	AMN	A	349	-	-	3/23/41/41	0/1/1/1
4	NAG	A	334	1	-	0/6/23/26	0/1/1/1

Continued on next page...

Continued from previous page...

Mol	Type	Chain	Res	Link	Chirals	Torsions	Rings
4	NAG	C	348	1	-	2/6/23/26	0/1/1/1
4	NAG	E	334	1	-	0/6/23/26	0/1/1/1
5	AMN	E	349	-	-	3/23/41/41	0/1/1/1
4	NAG	C	329	1	-	0/6/23/26	0/1/1/1
5	AMN	C	349	-	-	3/23/41/41	0/1/1/1
4	NAG	A	348	1	-	2/6/23/26	0/1/1/1
4	NAG	E	329	1	-	0/6/23/26	0/1/1/1
4	NAG	A	329	1	-	0/6/23/26	0/1/1/1
4	NAG	B	401	2	-	0/6/23/26	0/1/1/1

The worst 5 of 11 bond length outliers are listed below:

Mol	Chain	Res	Type	Atoms	Z	Observed(Å)	Ideal(Å)
5	E	349	AMN	C3-C2	2.81	1.56	1.52
4	A	329	NAG	C4-C5	2.72	1.58	1.53
5	A	349	AMN	C4-C5	2.49	1.55	1.53
4	C	329	NAG	C4-C5	2.38	1.58	1.53
4	D	401	NAG	C4-C5	2.33	1.58	1.53

The worst 5 of 27 bond angle outliers are listed below:

Mol	Chain	Res	Type	Atoms	Z	Observed(°)	Ideal(°)
4	F	401	NAG	C1-O5-C5	4.40	118.08	112.19
4	D	401	NAG	C1-O5-C5	4.30	117.95	112.19
4	B	401	NAG	C1-O5-C5	4.13	117.72	112.19
4	A	348	NAG	C1-O5-C5	3.70	117.14	112.19
4	C	348	NAG	C1-O5-C5	3.51	116.89	112.19

There are no chirality outliers.

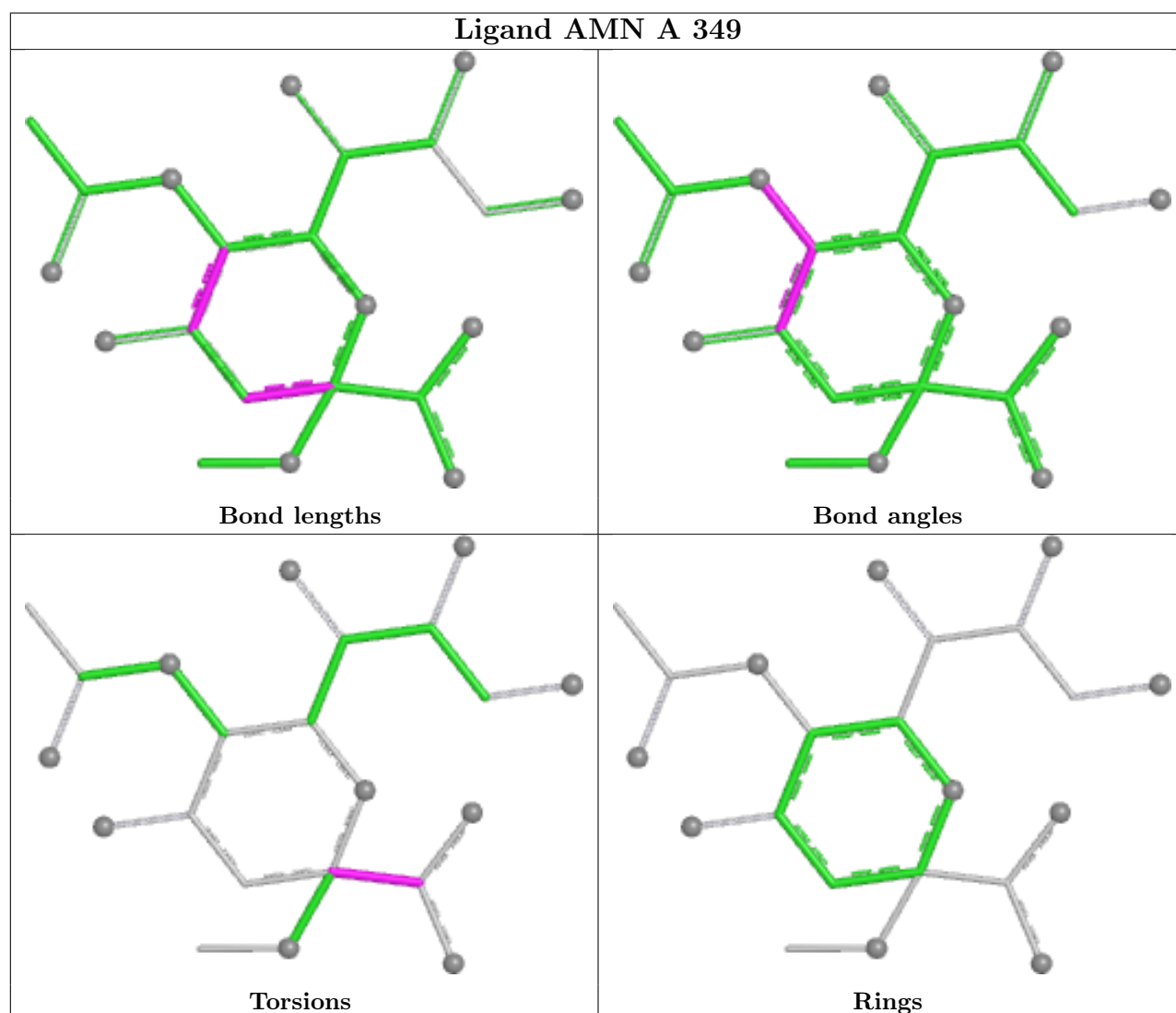
5 of 15 torsion outliers are listed below:

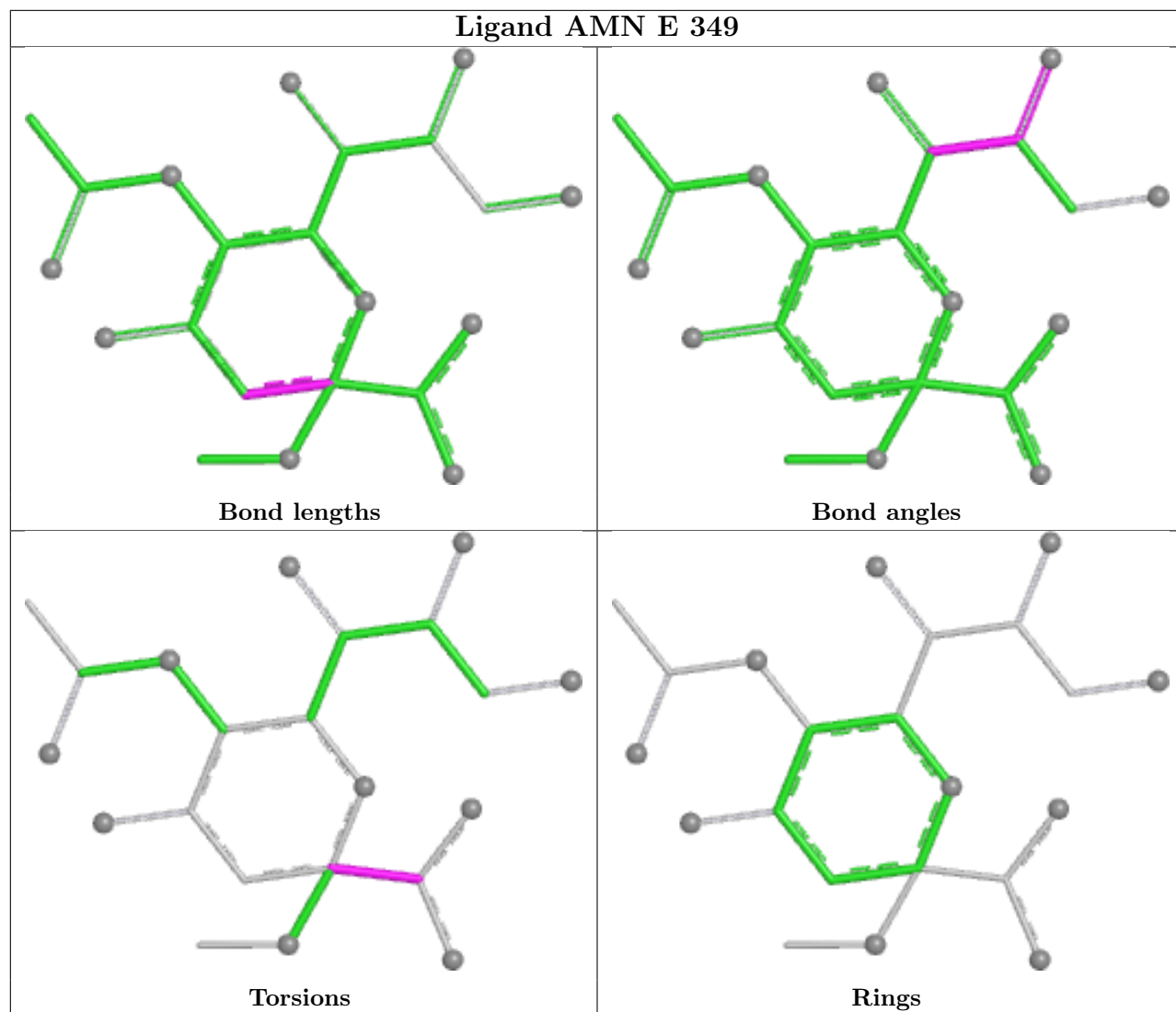
Mol	Chain	Res	Type	Atoms
5	A	349	AMN	O1B-C1-C2-O2
5	C	349	AMN	O1B-C1-C2-O2
5	E	349	AMN	O1B-C1-C2-O2
4	C	348	NAG	O5-C5-C6-O6
4	A	348	NAG	O5-C5-C6-O6

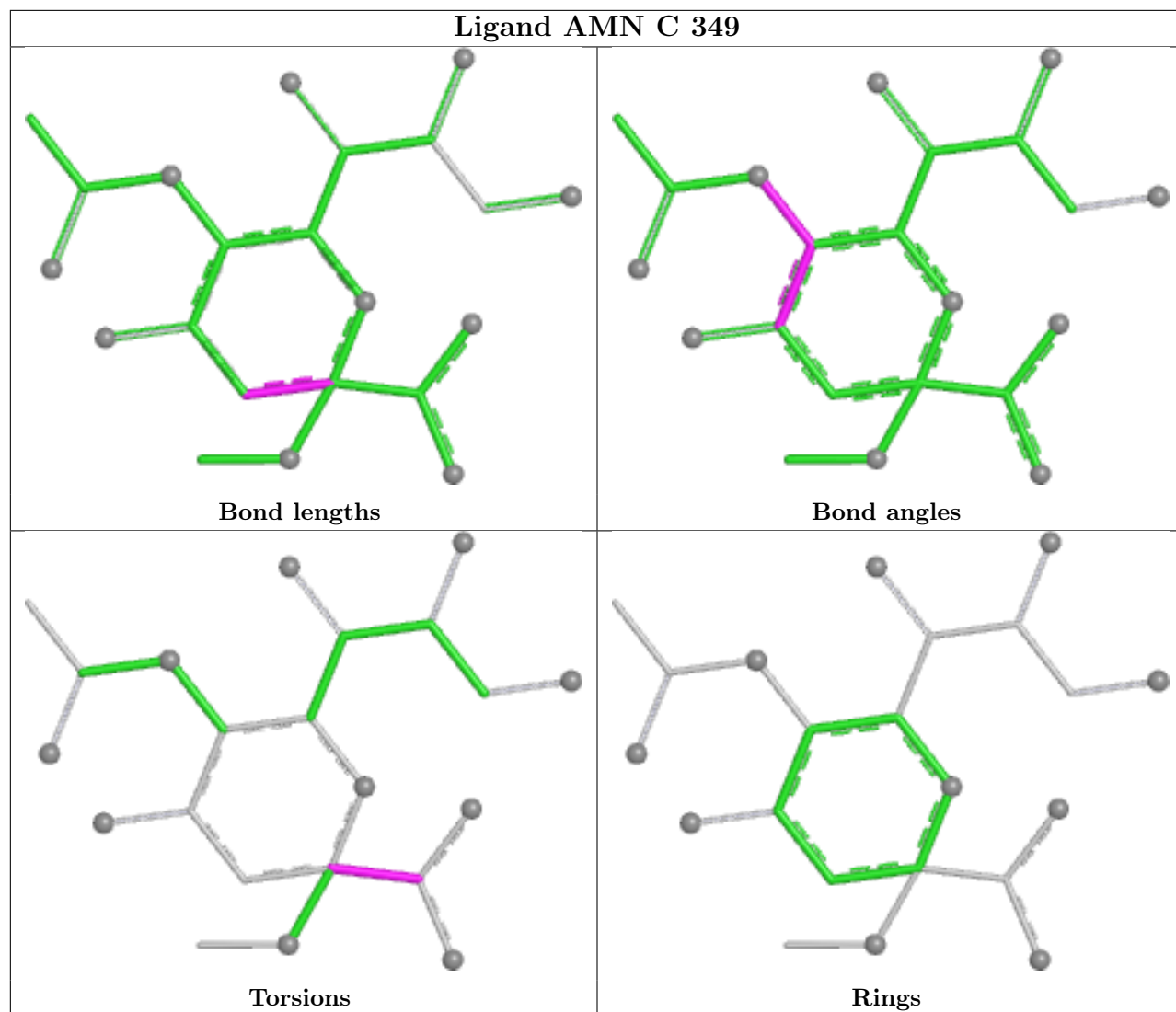
There are no ring outliers.

No monomer is involved in short contacts.

The following is a two-dimensional graphical depiction of Mogul quality analysis of bond lengths, bond angles, torsion angles, and ring geometry for all instances of the Ligand of Interest. In addition, ligands with molecular weight > 250 and outliers as shown on the validation Tables will also be included. For torsion angles, if less than 5% of the Mogul distribution of torsion angles is within 10 degrees of the torsion angle in question, then that torsion angle is considered an outlier. Any bond that is central to one or more torsion angles identified as an outlier by Mogul will be highlighted in the graph. For rings, the root-mean-square deviation (RMSD) between the ring in question and similar rings identified by Mogul is calculated over all ring torsion angles. If the average RMSD is greater than 60 degrees and the minimal RMSD between the ring in question and any Mogul-identified rings is also greater than 60 degrees, then that ring is considered an outlier. The outliers are highlighted in purple. The color gray indicates Mogul did not find sufficient equivalents in the CSD to analyse the geometry.







5.7 Other polymers [i](#)

There are no such residues in this entry.

5.8 Polymer linkage issues [i](#)

There are no chain breaks in this entry.

6 Fit of model and data [i](#)

6.1 Protein, DNA and RNA chains [i](#)

In the following table, the column labelled ‘#RSRZ > 2’ contains the number (and percentage) of RSRZ outliers, followed by percent RSRZ outliers for the chain as percentile scores relative to all X-ray entries and entries of similar resolution. The OWAB column contains the minimum, median, 95th percentile and maximum values of the occupancy-weighted average B-factor per residue. The column labelled ‘Q < 0.9’ lists the number of (and percentage) of residues with an average occupancy less than 0.9.

Mol	Chain	Analysed	<RSRZ>	#RSRZ>2	OWAB(Å ²)	Q<0.9
1	A	328/328 (100%)	-0.12	16 (4%) 36 34	7, 23, 42, 139	0
1	C	328/328 (100%)	-0.17	13 (3%) 43 41	6, 23, 42, 145	0
1	E	328/328 (100%)	-0.18	19 (5%) 30 28	7, 22, 42, 139	0
2	B	175/175 (100%)	-0.18	9 (5%) 34 32	2, 18, 42, 89	0
2	D	175/175 (100%)	-0.26	9 (5%) 34 32	2, 17, 40, 89	0
2	F	175/175 (100%)	-0.28	12 (6%) 24 22	2, 17, 40, 89	0
All	All	1509/1509 (100%)	-0.19	78 (5%) 34 31	2, 21, 42, 145	0

The worst 5 of 78 RSRZ outliers are listed below:

Mol	Chain	Res	Type	RSRZ
1	E	4	PRO	8.6
1	C	5	GLY	7.8
1	A	6	ASN	6.8
1	C	3	LEU	6.6
1	E	5	GLY	6.5

6.2 Non-standard residues in protein, DNA, RNA chains [i](#)

There are no non-standard protein/DNA/RNA residues in this entry.

6.3 Carbohydrates [i](#)

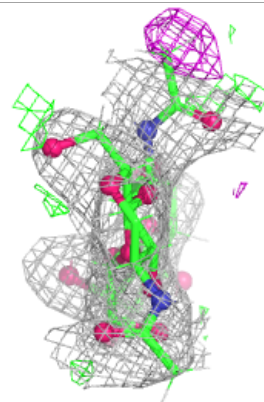
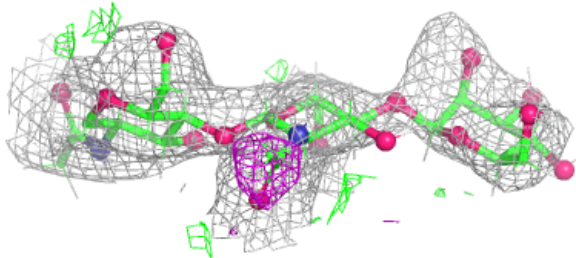
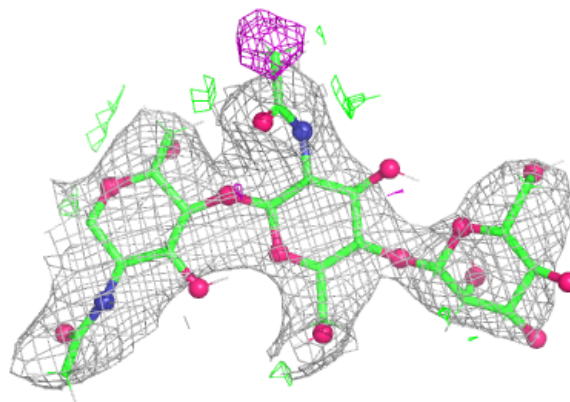
In the following table, the Atoms column lists the number of modelled atoms in the group and the number defined in the chemical component dictionary. The B-factors column lists the minimum, median, 95th percentile and maximum values of B factors of atoms in the group. The column labelled ‘Q < 0.9’ lists the number of atoms with occupancy less than 0.9.

Mol	Type	Chain	Res	Atoms	RSCC	RSR	B-factors(\AA^2)	Q<0.9
3	NAG	G	2	14/15	0.73	0.13	0,0,59,62	0
3	BMA	I	3	11/12	0.74	0.17	0,0,67,69	0
3	BMA	H	3	11/12	0.76	0.14	0,0,70,70	0
3	BMA	G	3	11/12	0.84	0.10	0,0,68,70	0
3	NAG	H	1	14/15	0.85	0.11	0,0,48,51	0
3	NAG	G	1	14/15	0.86	0.09	0,0,48,51	0
3	NAG	H	2	14/15	0.86	0.11	0,0,59,62	0
3	NAG	I	2	14/15	0.89	0.11	0,0,59,61	0
3	NAG	I	1	14/15	0.92	0.09	0,0,47,51	0

The following is a graphical depiction of the model fit to experimental electron density for oligosaccharide. Each fit is shown from different orientation to approximate a three-dimensional view.

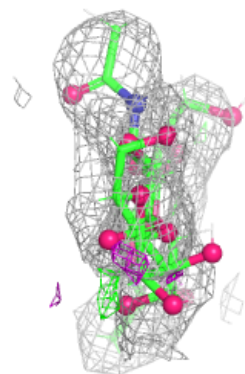
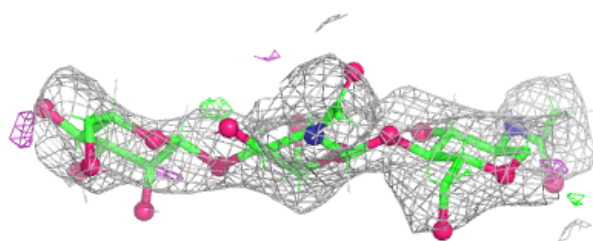
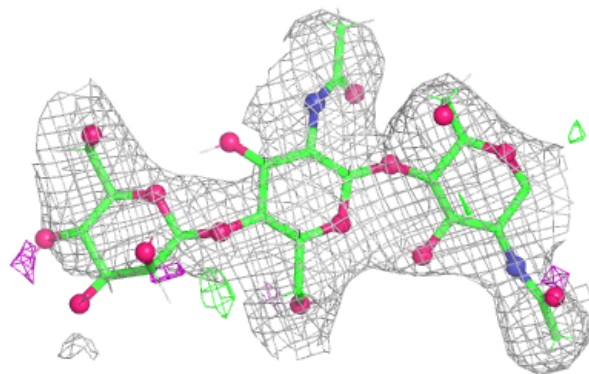
Electron density around Chain G:

2mF_o-DF_c (at 0.7 rmsd) in gray
mF_o-DF_c (at 3 rmsd) in purple (negative)
and green (positive)

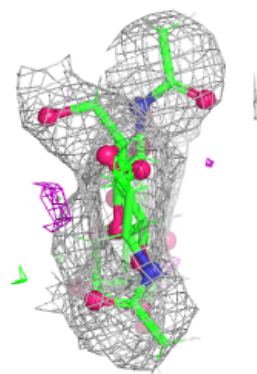
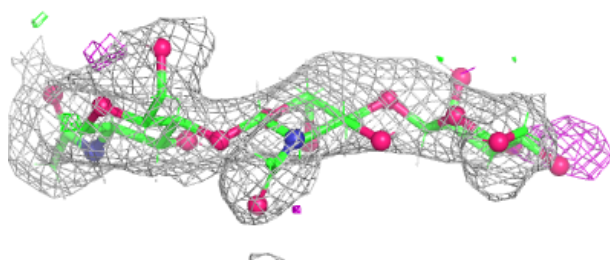
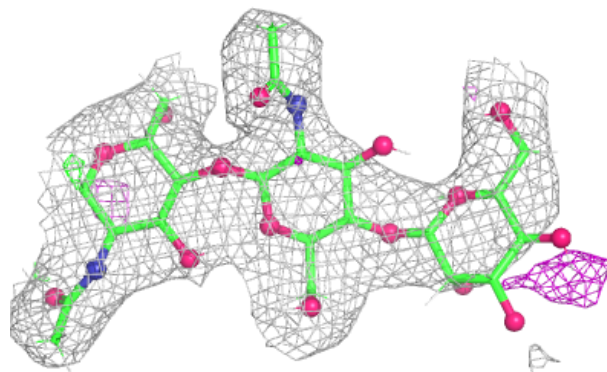


Electron density around Chain H:

$2mF_o-DF_c$ (at 0.7 rmsd) in gray
 mF_o-DF_c (at 3 rmsd) in purple (negative)
and green (positive)

**Electron density around Chain I:**

$2mF_o-DF_c$ (at 0.7 rmsd) in gray
 mF_o-DF_c (at 3 rmsd) in purple (negative)
and green (positive)



6.4 Ligands

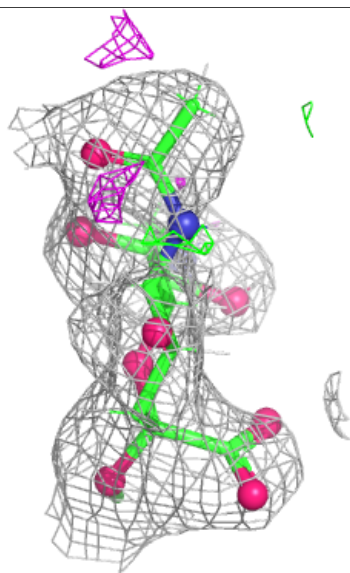
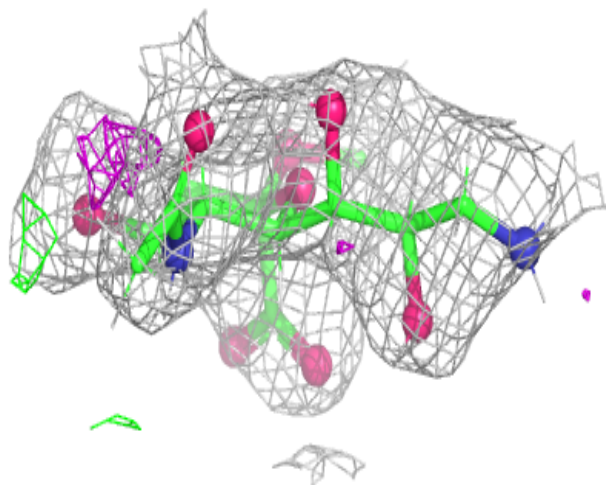
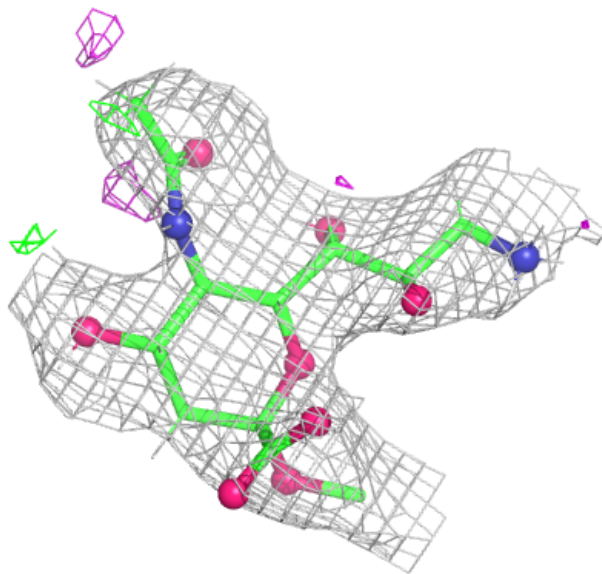
In the following table, the Atoms column lists the number of modelled atoms in the group and the number defined in the chemical component dictionary. The B-factors column lists the minimum, median, 95th percentile and maximum values of B factors of atoms in the group. The column labelled 'Q< 0.9' lists the number of atoms with occupancy less than 0.9.

Mol	Type	Chain	Res	Atoms	RSCC	RSR	B-factors(Å ²)	Q<0.9
4	NAG	F	401	14/15	0.64	0.19	0,0,67,68	0
4	NAG	D	401	14/15	0.72	0.21	0,0,67,68	0
4	NAG	C	334	14/15	0.73	0.15	0,0,50,52	0
4	NAG	A	334	14/15	0.78	0.14	0,0,49,51	0
4	NAG	B	401	14/15	0.79	0.18	0,0,67,68	0
4	NAG	C	348	14/15	0.79	0.17	0,0,49,52	0
4	NAG	E	329	14/15	0.81	0.17	0,0,51,51	0
4	NAG	E	348	14/15	0.83	0.16	0,0,49,52	0
4	NAG	C	329	14/15	0.86	0.11	0,0,50,51	0
4	NAG	A	348	14/15	0.87	0.11	0,0,49,51	0
5	AMN	E	349	22/22	0.87	0.11	0,32,37,38	41
5	AMN	C	349	22/22	0.88	0.11	0,33,37,38	41
4	NAG	A	329	14/15	0.88	0.18	0,0,51,51	0
4	NAG	E	334	14/15	0.89	0.11	0,0,49,52	0
5	AMN	A	349	22/22	0.89	0.11	0,32,37,38	41

The following is a graphical depiction of the model fit to experimental electron density of all instances of the Ligand of Interest. In addition, ligands with molecular weight > 250 and outliers as shown on the geometry validation Tables will also be included. Each fit is shown from different orientation to approximate a three-dimensional view.

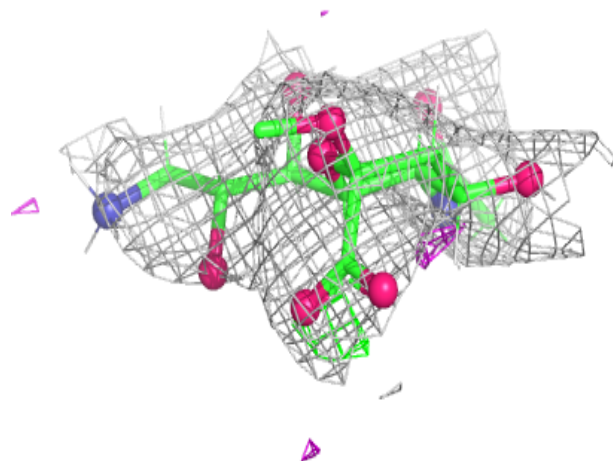
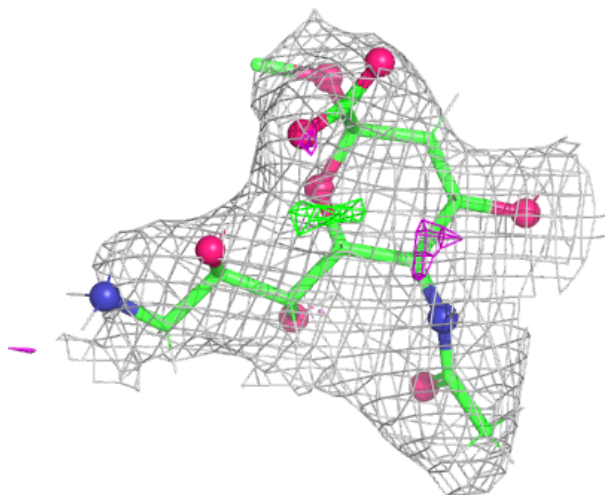
Electron density around AMN E 349:

$2mF_o-DF_c$ (at 0.7 rmsd) in gray
 mF_o-DF_c (at 3 rmsd) in purple (negative)
and green (positive)



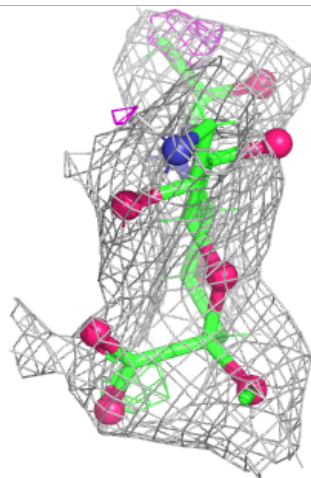
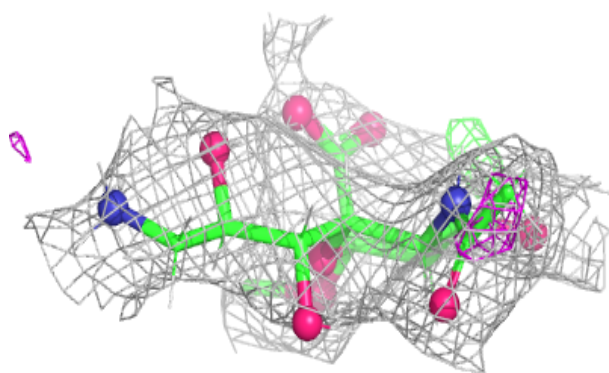
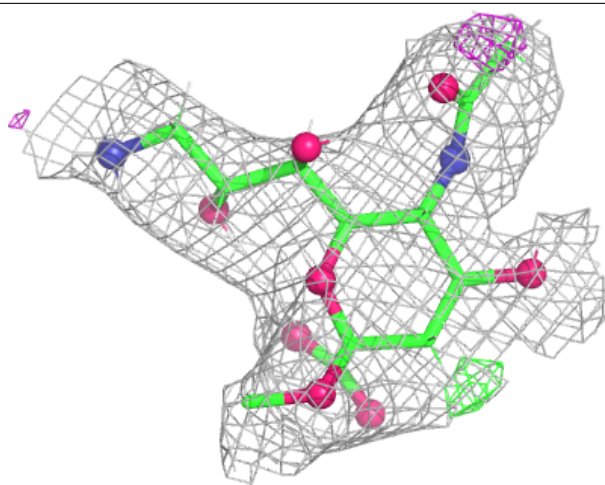
Electron density around AMN C 349:

$2mF_o-DF_c$ (at 0.7 rmsd) in gray
 mF_o-DF_c (at 3 rmsd) in purple (negative)
and green (positive)



Electron density around AMN A 349:

$2mF_o-DF_c$ (at 0.7 rmsd) in gray
 mF_o-DF_c (at 3 rmsd) in purple (negative)
and green (positive)



6.5 Other polymers [i](#)

There are no such residues in this entry.