



# Full wwPDB X-ray Structure Validation Report ⓘ

Jun 16, 2024 – 07:39 PM EDT

PDB ID : 5HYO  
Title : X-Ray Structure of Unbound Porcine Epidemic Diarrhea Virus 3CLpro  
Authors : St John, S.E.; Mesecar, A.D.  
Deposited on : 2016-02-01  
Resolution : 2.10 Å(reported)

This is a Full wwPDB X-ray Structure Validation Report for a publicly released PDB entry.

We welcome your comments at [validation@mail.wwpdb.org](mailto:validation@mail.wwpdb.org)

A user guide is available at

<https://www.wwpdb.org/validation/2017/XrayValidationReportHelp>

with specific help available everywhere you see the ⓘ symbol.

The types of validation reports are described at

<http://www.wwpdb.org/validation/2017/FAQs#types>.

---

The following versions of software and data (see [references ⓘ](#)) were used in the production of this report:

MolProbity	:	4.02b-467
Mogul	:	1.8.5 (274361), CSD as541be (2020)
Xtriage (Phenix)	:	1.13
EDS	:	2.37.1
Percentile statistics	:	20191225.v01 (using entries in the PDB archive December 25th 2019)
Refmac	:	5.8.0158
CCP4	:	7.0.044 (Gargrove)
Ideal geometry (proteins)	:	Engh & Huber (2001)
Ideal geometry (DNA, RNA)	:	Parkinson et al. (1996)
Validation Pipeline (wwPDB-VP)	:	2.37.1

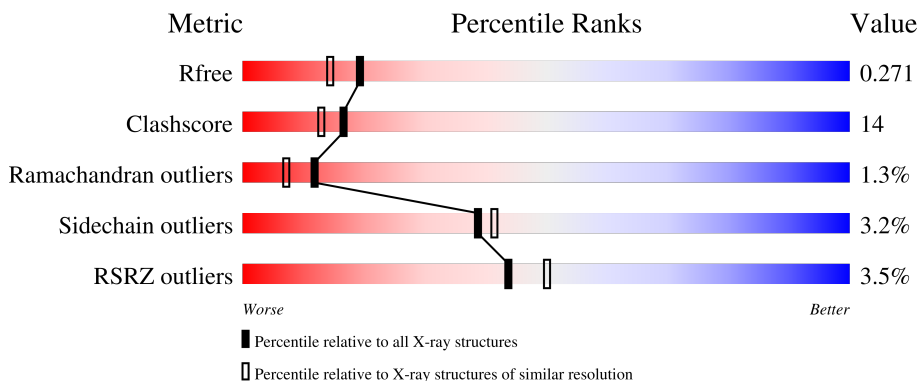
# 1 Overall quality at a glance

The following experimental techniques were used to determine the structure:

*X-RAY DIFFRACTION*

The reported resolution of this entry is 2.10 Å.

Percentile scores (ranging between 0-100) for global validation metrics of the entry are shown in the following graphic. The table shows the number of entries on which the scores are based.



Metric	Whole archive (#Entries)	Similar resolution (#Entries, resolution range(Å))
$R_{free}$	130704	5197 (2.10-2.10)
Clashscore	141614	5710 (2.10-2.10)
Ramachandran outliers	138981	5647 (2.10-2.10)
Sidechain outliers	138945	5648 (2.10-2.10)
RSRZ outliers	127900	5083 (2.10-2.10)

The table below summarises the geometric issues observed across the polymeric chains and their fit to the electron density. The red, orange, yellow and green segments of the lower bar indicate the fraction of residues that contain outliers for  $\geq 3$ , 2, 1 and 0 types of geometric quality criteria respectively. A grey segment represents the fraction of residues that are not modelled. The numeric value for each fraction is indicated below the corresponding segment, with a dot representing fractions  $\leq 5\%$ . The upper red bar (where present) indicates the fraction of residues that have poor fit to the electron density. The numeric value is given above the bar.

Mol	Chain	Length	Quality of chain
1	A	301	<div> <div>3%</div> <div>74%</div> <div>22%</div> <div>.</div> </div>
1	B	301	<div> <div>4%</div> <div>70%</div> <div>28%</div> <div>.</div> </div>

## 2 Entry composition [i](#)

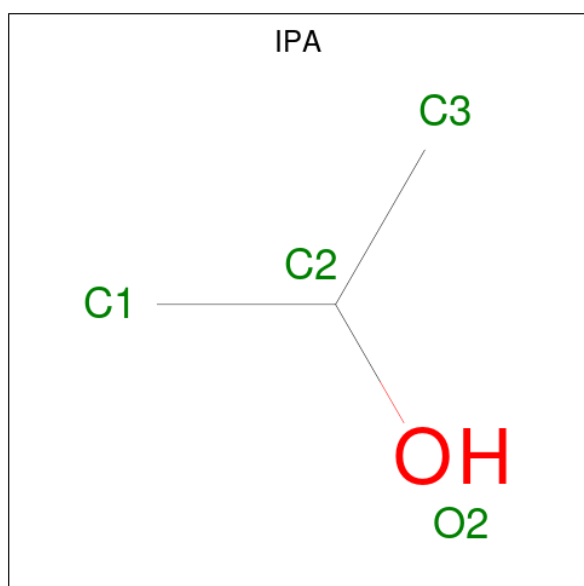
There are 5 unique types of molecules in this entry. The entry contains 4821 atoms, of which 0 are hydrogens and 0 are deuteriums.

In the tables below, the ZeroOcc column contains the number of atoms modelled with zero occupancy, the AltConf column contains the number of residues with at least one atom in alternate conformation and the Trace column contains the number of residues modelled with at most 2 atoms.

- Molecule 1 is a protein called PEDV 3CLpro.

Mol	Chain	Residues	Atoms					ZeroOcc	AltConf	Trace
1	A	301	Total	C	N	O	S	0	0	0
			2295	1448	396	436	15			
1	B	301	Total	C	N	O	S	0	0	0
			2295	1448	396	436	15			

- Molecule 2 is ISOPROPYL ALCOHOL (three-letter code: IPA) (formula: C<sub>3</sub>H<sub>8</sub>O).



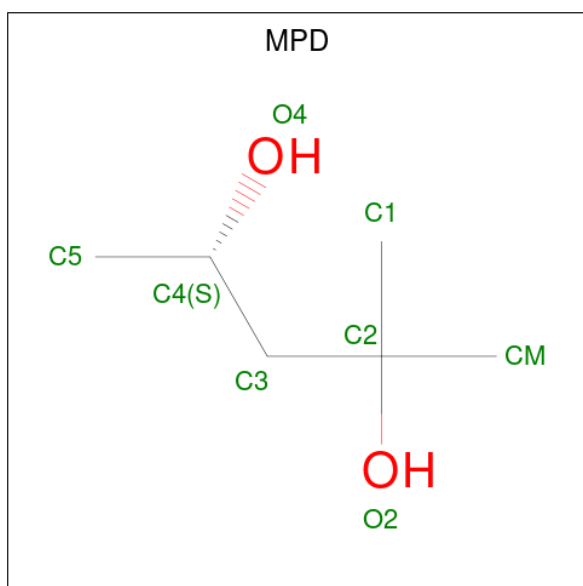
Mol	Chain	Residues	Atoms			ZeroOcc	AltConf
2	A	1	Total	C	O	0	0
			4	3	1		
2	A	1	Total	C	O	0	0
			4	3	1		
2	A	1	Total	C	O	0	0
			4	3	1		
2	A	1	Total	C	O	0	0
			4	3	1		

*Continued on next page...*

Continued from previous page...

Mol	Chain	Residues	Atoms			ZeroOcc	AltConf
2	A	1	Total	C	O	0	0
			4	3	1		
2	B	1	Total	C	O	0	0
			4	3	1		
2	B	1	Total	C	O	0	0
			4	3	1		

- Molecule 3 is (4S)-2-METHYL-2,4-PENTANEDIOL (three-letter code: MPD) (formula:  $C_6H_{14}O_2$ ).



Mol	Chain	Residues	Atoms			ZeroOcc	AltConf
3	A	1	Total	C	O	0	0
			8	6	2		
3	B	1	Total	C	O	0	0
			8	6	2		

- Molecule 4 is DIMETHYL SULFOXIDE (three-letter code: DMS) (formula:  $C_2H_6OS$ ).



Mol	Chain	Residues	Atoms				ZeroOcc	AltConf
4	A	1	Total	C	O	S	0	0
			4	2	1	1		

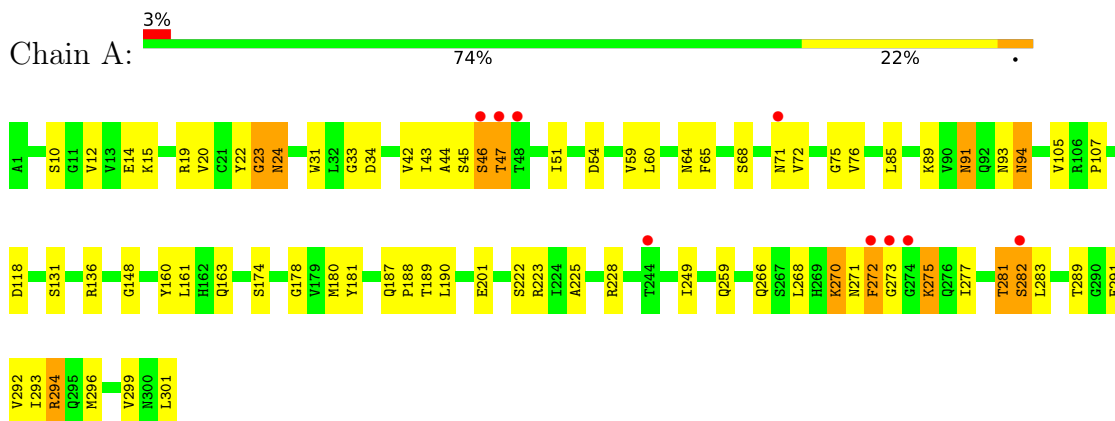
- Molecule 5 is water.

Mol	Chain	Residues	Atoms		ZeroOcc	AltConf
5	A	80	Total	O	0	0
			80	80		
5	B	103	Total	O	0	0
			103	103		

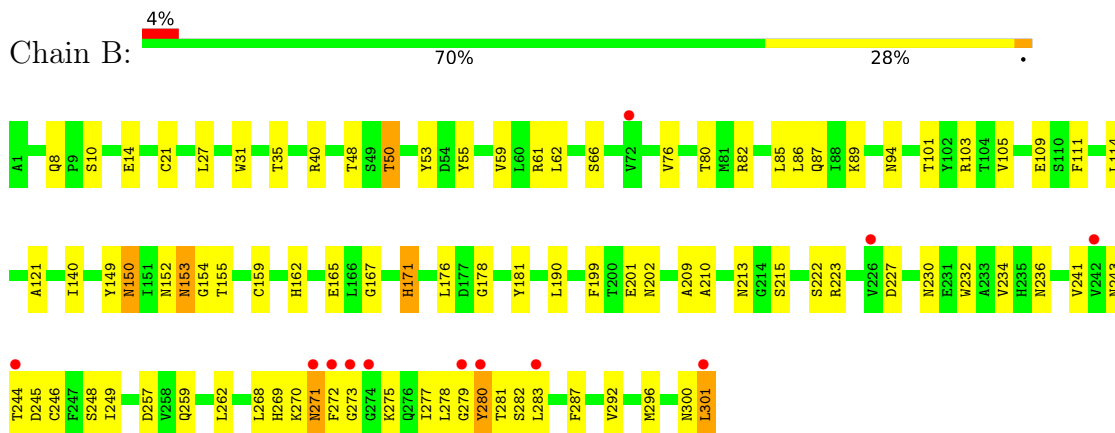
### 3 Residue-property plots [i](#)

These plots are drawn for all protein, RNA, DNA and oligosaccharide chains in the entry. The first graphic for a chain summarises the proportions of the various outlier classes displayed in the second graphic. The second graphic shows the sequence view annotated by issues in geometry and electron density. Residues are color-coded according to the number of geometric quality criteria for which they contain at least one outlier: green = 0, yellow = 1, orange = 2 and red = 3 or more. A red dot above a residue indicates a poor fit to the electron density ( $RSRZ > 2$ ). Stretches of 2 or more consecutive residues without any outlier are shown as a green connector. Residues present in the sample, but not in the model, are shown in grey.

#### • Molecule 1: PEDV 3CLpro



#### • Molecule 1: PEDV 3CLpro



## 4 Data and refinement statistics

Property	Value	Source
Space group	P 21 21 21	Depositor
Cell constants a, b, c, $\alpha$ , $\beta$ , $\gamma$	58.59Å 76.29Å 119.17Å 90.00° 90.00° 90.00°	Depositor
Resolution (Å)	46.47 – 2.10 46.47 – 2.10	Depositor EDS
% Data completeness (in resolution range)	91.8 (46.47-2.10) 91.3 (46.47-2.10)	Depositor EDS
$R_{merge}$	(Not available)	Depositor
$R_{sym}$	(Not available)	Depositor
$\langle I/\sigma(I) \rangle$ <sup>1</sup>	2.49 (at 2.10Å)	Xtriage
Refinement program	PHENIX 1.9_1692	Depositor
R, $R_{free}$	0.204 , 0.269 0.206 , 0.271	Depositor DCC
$R_{free}$ test set	2000 reflections (6.67%)	wwPDB-VP
Wilson B-factor (Å <sup>2</sup> )	34.2	Xtriage
Anisotropy	0.475	Xtriage
Bulk solvent $k_{sol}$ (e/Å <sup>3</sup> ), $B_{sol}$ (Å <sup>2</sup> )	0.30 , 61.8	EDS
L-test for twinning <sup>2</sup>	$\langle  L  \rangle = 0.43$ , $\langle L^2 \rangle = 0.26$	Xtriage
Estimated twinning fraction	No twinning to report.	Xtriage
$F_o, F_c$ correlation	0.95	EDS
Total number of atoms	4821	wwPDB-VP
Average B, all atoms (Å <sup>2</sup> )	50.0	wwPDB-VP

Xtriage's analysis on translational NCS is as follows: *The analyses of the Patterson function reveals a significant off-origin peak that is 26.50 % of the origin peak, indicating pseudo-translational symmetry. The chance of finding a peak of this or larger height randomly in a structure without pseudo-translational symmetry is equal to 2.6050e-03.*

<sup>1</sup>Intensities estimated from amplitudes.

<sup>2</sup>Theoretical values of  $\langle |L| \rangle$ ,  $\langle L^2 \rangle$  for acentric reflections are 0.5, 0.333 respectively for untwinned datasets, and 0.375, 0.2 for perfectly twinned datasets.

## 5 Model quality

### 5.1 Standard geometry

Bond lengths and bond angles in the following residue types are not validated in this section: MPD, DMS, IPA

The Z score for a bond length (or angle) is the number of standard deviations the observed value is removed from the expected value. A bond length (or angle) with  $|Z| > 5$  is considered an outlier worth inspection. RMSZ is the root-mean-square of all Z scores of the bond lengths (or angles).

Mol	Chain	Bond lengths		Bond angles	
		RMSZ	$\# Z  > 5$	RMSZ	$\# Z  > 5$
1	A	0.48	0/2341	0.69	1/3179 (0.0%)
1	B	0.51	0/2341	0.70	2/3179 (0.1%)
All	All	0.49	0/4682	0.70	3/6358 (0.0%)

Chiral center outliers are detected by calculating the chiral volume of a chiral center and verifying if the center is modelled as a planar moiety or with the opposite hand. A planarity outlier is detected by checking planarity of atoms in a peptide group, atoms in a mainchain group or atoms of a sidechain that are expected to be planar.

Mol	Chain	#Chirality outliers	#Planarity outliers
1	A	0	2
1	B	0	1
All	All	0	3

There are no bond length outliers.

All (3) bond angle outliers are listed below:

Mol	Chain	Res	Type	Atoms	Z	Observed(°)	Ideal(°)
1	B	176	LEU	CA-CB-CG	-6.04	101.40	115.30
1	B	301	LEU	CA-CB-CG	5.39	127.69	115.30
1	A	23	GLY	C-N-CA	5.20	134.71	121.70

There are no chirality outliers.

All (3) planarity outliers are listed below:

Mol	Chain	Res	Type	Group
1	A	270	LYS	Peptide
1	A	271	ASN	Peptide
1	B	244	THR	Peptide



## 5.2 Too-close contacts ⓘ

In the following table, the Non-H and H(model) columns list the number of non-hydrogen atoms and hydrogen atoms in the chain respectively. The H(added) column lists the number of hydrogen atoms added and optimized by MolProbity. The Clashes column lists the number of clashes within the asymmetric unit, whereas Symm-Clashes lists symmetry-related clashes.

Mol	Chain	Non-H	H(model)	H(added)	Clashes	Symm-Clashes
1	A	2295	0	2251	61	1
1	B	2295	0	2251	75	1
2	A	20	0	40	0	0
2	B	8	0	16	0	0
3	A	8	0	14	3	0
3	B	8	0	14	4	0
4	A	4	0	6	0	0
5	A	80	0	0	5	0
5	B	103	0	0	4	0
All	All	4821	0	4592	131	1

The all-atom clashscore is defined as the number of clashes found per 1000 atoms (including hydrogen atoms). The all-atom clashscore for this structure is 14.

All (131) close contacts within the same asymmetric unit are listed below, sorted by their clash magnitude.

Atom-1	Atom-2	Interatomic distance (Å)	Clash overlap (Å)
1:A:51:ILE:H	1:A:187:GLN:NE2	1.69	0.89
1:B:59:VAL:O	1:B:61:ARG:NH1	2.09	0.85
1:B:165:GLU:HB2	3:B:403:MPD:H11	1.58	0.84
1:A:51:ILE:H	1:A:187:GLN:HE22	1.22	0.83
1:A:23:GLY:HA3	1:A:24:ASN:HB3	1.62	0.80
1:B:162:HIS:NE2	3:B:403:MPD:H13	1.99	0.78
1:B:199:PHE:HB3	1:B:202:ASN:HD22	1.51	0.74
1:A:163:GLN:HG3	1:A:180:MET:HE1	1.70	0.74
1:B:259:GLN:HA	1:B:262:LEU:HD12	1.72	0.71
1:A:23:GLY:HA3	1:A:24:ASN:CB	2.19	0.71
1:A:291:GLU:HG2	3:A:406:MPD:H52	1.71	0.70
1:B:300:ASN:ND2	5:B:502:HOH:O	2.23	0.69
1:A:54:ASP:OD2	5:A:501:HOH:O	2.11	0.68
1:B:150:ASN:HD22	1:B:150:ASN:N	1.93	0.66
1:A:85:LEU:HG	1:A:178:GLY:HA2	1.78	0.65
1:B:296:MET:O	5:B:501:HOH:O	2.14	0.65
1:B:201:GLU:HG2	1:B:243:ASN:OD1	1.97	0.65
1:A:281:THR:HA	1:B:281:THR:HA	1.78	0.64

*Continued on next page...*

*Continued from previous page...*

Atom-1	Atom-2	Interatomic distance (Å)	Clash overlap (Å)
1:A:51:ILE:N	1:A:187:GLN:HE22	1.94	0.63
1:A:281:THR:HB	1:B:281:THR:H	1.64	0.63
1:B:105:VAL:HG23	1:B:109:GLU:HB2	1.80	0.63
1:B:270:LYS:O	1:B:270:LYS:HG2	2.00	0.61
1:B:111:PHE:HB3	1:B:150:ASN:HD21	1.66	0.61
1:A:75:GLY:H	1:A:91:ASN:HD21	1.48	0.60
1:A:281:THR:O	1:A:283:LEU:N	2.34	0.60
1:B:210:ALA:HB1	1:B:215:SER:HB3	1.84	0.59
1:A:10:SER:O	1:A:14:GLU:HG3	2.01	0.59
1:A:75:GLY:H	1:A:91:ASN:ND2	2.00	0.59
1:A:60:LEU:HD21	1:A:65:PHE:HE1	1.69	0.58
1:B:165:GLU:OE2	3:B:403:MPD:H53	2.03	0.58
1:A:34:ASP:OD1	1:A:89:LYS:NZ	2.35	0.58
1:A:33:GLY:HA2	1:A:93:ASN:ND2	2.20	0.57
1:B:80:THR:HG22	1:B:87:GLN:HB2	1.87	0.56
1:A:75:GLY:N	1:A:91:ASN:HD21	2.05	0.55
1:B:243:ASN:ND2	1:B:246:CYS:SG	2.80	0.55
1:A:281:THR:HG23	1:A:283:LEU:O	2.07	0.54
1:B:101:THR:HG23	1:B:155:THR:HG21	1.90	0.54
1:B:199:PHE:CD2	1:B:202:ASN:ND2	2.76	0.54
1:B:31:TRP:CE2	1:B:94:ASN:HB2	2.43	0.54
1:B:149:TYR:C	1:B:150:ASN:HD22	2.11	0.53
1:B:167:GLY:HA2	1:B:190:LEU:HD11	1.91	0.53
1:A:223:ARG:HG2	1:A:259:GLN:HB3	1.91	0.52
1:A:187:GLN:C	1:A:189:THR:H	2.13	0.52
1:A:294:ARG:HH21	3:A:406:MPD:H4	1.75	0.51
1:A:44:ALA:O	5:A:502:HOH:O	2.19	0.51
1:A:45:SER:O	1:A:47:THR:N	2.44	0.51
1:A:272:PHE:CG	1:A:273:GLY:HA2	2.45	0.51
1:B:209:ALA:O	1:B:213:ASN:ND2	2.39	0.51
1:A:15:LYS:NZ	5:A:506:HOH:O	2.43	0.51
1:B:85:LEU:HG	1:B:178:GLY:HA2	1.92	0.51
1:A:268:LEU:HD13	1:A:283:LEU:HD21	1.92	0.51
1:B:202:ASN:HB3	1:B:287:PHE:O	2.10	0.50
1:A:22:TYR:O	1:A:24:ASN:HB3	2.11	0.50
1:A:190:LEU:HD22	1:A:190:LEU:H	1.76	0.50
1:A:45:SER:C	1:A:47:THR:H	2.14	0.49
1:B:222:SER:OG	1:B:223:ARG:N	2.44	0.49
1:A:44:ALA:HB1	1:A:51:ILE:HG12	1.95	0.49
1:B:292:VAL:O	1:B:296:MET:HG2	2.13	0.49
1:A:64:ASN:ND2	5:A:508:HOH:O	2.45	0.49

*Continued on next page...*

*Continued from previous page...*

Atom-1	Atom-2	Interatomic distance (Å)	Clash overlap (Å)
1:A:19:ARG:HG3	1:A:19:ARG:HH11	1.77	0.48
1:B:280:TYR:H	1:B:282:SER:H	1.62	0.48
1:B:105:VAL:HG12	1:B:181:TYR:OH	2.13	0.48
1:B:245:ASP:OD1	1:B:248:SER:OG	2.31	0.48
1:B:61:ARG:NH1	1:B:61:ARG:HG2	2.29	0.47
1:A:46:SER:O	1:A:47:THR:OG1	2.26	0.47
1:A:281:THR:HB	1:B:281:THR:N	2.28	0.47
1:B:162:HIS:HE1	1:B:171:HIS:HB3	1.79	0.47
1:B:275:LYS:NZ	5:B:505:HOH:O	2.42	0.47
1:B:249:ILE:H	1:B:249:ILE:HD12	1.79	0.47
1:A:281:THR:HB	1:B:280:TYR:N	2.30	0.47
1:B:114:LEU:HD11	1:B:121:ALA:HB1	1.97	0.47
1:A:249:ILE:HD12	1:A:249:ILE:H	1.79	0.47
1:B:21:CYS:HB2	1:B:66:SER:HB3	1.97	0.47
1:B:232:TRP:O	1:B:236:ASN:ND2	2.45	0.46
1:B:272:PHE:HB3	1:B:273:GLY:CA	2.46	0.46
1:A:174:SER:HB3	1:A:180:MET:HE1	1.98	0.46
1:B:40:ARG:HG3	1:B:53:TYR:CE1	2.51	0.46
1:B:230:ASN:O	1:B:234:VAL:HG23	2.16	0.46
1:A:222:SER:OG	1:A:223:ARG:N	2.48	0.46
1:B:40:ARG:HA	1:B:86:LEU:HG	1.98	0.46
1:B:269:HIS:C	1:B:271:ASN:H	2.20	0.45
1:A:148:GLY:HA3	1:A:160:TYR:HB3	1.98	0.45
1:B:277:ILE:O	1:B:278:LEU:HB2	2.15	0.45
1:A:289:THR:O	1:A:293:ILE:HG12	2.16	0.45
1:A:19:ARG:NH1	1:A:118:ASP:HA	2.31	0.45
3:A:406:MPD:H31	5:A:532:HOH:O	2.16	0.45
1:B:152:ASN:O	1:B:153:ASN:HB2	2.17	0.45
1:B:153:ASN:CB	1:B:154:GLY:HA3	2.47	0.45
1:B:281:THR:C	1:B:283:LEU:H	2.19	0.44
1:B:103:ARG:O	1:B:159:CYS:HA	2.17	0.44
1:A:65:PHE:CB	1:A:76:VAL:HG21	2.47	0.44
1:A:187:GLN:NE2	1:A:188:PRO:HD2	2.33	0.44
1:B:82:ARG:HD3	1:B:87:GLN:OE1	2.18	0.44
1:A:107:PRO:HB3	1:A:131:SER:HA	1.99	0.44
1:A:225:ALA:HB3	1:A:228:ARG:HG3	1.99	0.44
1:B:10:SER:OG	1:B:14:GLU:OE2	2.28	0.44
1:B:55:TYR:O	1:B:59:VAL:HG22	2.18	0.44
1:B:227:ASP:HB2	5:B:519:HOH:O	2.18	0.44
1:B:272:PHE:CB	1:B:273:GLY:HA3	2.48	0.44
1:B:62:LEU:HD22	1:B:76:VAL:HG11	2.00	0.43

*Continued on next page...*

*Continued from previous page...*

Atom-1	Atom-2	Interatomic distance (Å)	Clash overlap (Å)
1:B:111:PHE:CB	1:B:150:ASN:HD21	2.31	0.43
1:A:292:VAL:O	1:A:296:MET:HG2	2.18	0.43
1:A:281:THR:CA	1:B:281:THR:H	2.31	0.43
1:A:20:VAL:HG12	1:A:42:VAL:HG21	2.01	0.43
1:B:271:ASN:O	1:B:272:PHE:HD1	2.02	0.43
1:A:281:THR:CB	1:B:281:THR:H	2.29	0.43
1:B:61:ARG:HG2	1:B:61:ARG:HH11	1.83	0.43
1:A:266:GLN:O	1:A:270:LYS:HD2	2.19	0.43
1:B:153:ASN:HB2	1:B:154:GLY:HA3	2.01	0.43
1:A:187:GLN:HE21	1:A:188:PRO:HD2	1.84	0.42
1:B:257:ASP:OD1	1:B:259:GLN:HB2	2.18	0.42
1:A:23:GLY:CA	1:A:24:ASN:HB3	2.42	0.42
1:B:31:TRP:CD2	1:B:94:ASN:HB2	2.54	0.42
1:B:277:ILE:C	1:B:279:GLY:H	2.23	0.42
1:B:140:ILE:HA	3:B:403:MPD:H51	2.00	0.42
1:A:68:SER:HA	1:A:72:VAL:O	2.20	0.42
1:B:48:THR:C	1:B:50:THR:H	2.22	0.42
1:B:272:PHE:HB3	1:B:273:GLY:HA3	2.02	0.42
1:B:35:THR:HG22	1:B:89:LYS:HZ2	1.85	0.42
1:B:80:THR:CG2	1:B:87:GLN:HB2	2.50	0.41
1:B:230:ASN:OD1	1:B:241:VAL:HG22	2.20	0.41
1:B:300:ASN:O	1:B:301:LEU:C	2.59	0.41
1:A:105:VAL:HG22	1:A:181:TYR:OH	2.20	0.41
1:A:277:ILE:HG13	1:A:282:SER:HA	2.02	0.41
1:B:281:THR:O	1:B:282:SER:OG	2.25	0.41
1:A:31:TRP:CE2	1:A:94:ASN:HB2	2.55	0.41
1:A:85:LEU:HD22	1:A:161:LEU:HD23	2.02	0.41
1:B:111:PHE:CB	1:B:150:ASN:ND2	2.83	0.41
1:A:43:ILE:HG21	1:A:60:LEU:HD11	2.02	0.41
1:A:275:LYS:HA	1:A:275:LYS:HD3	1.88	0.40
1:B:268:LEU:HD13	1:B:283:LEU:HD11	2.03	0.40

All (1) symmetry-related close contacts are listed below. The label for Atom-2 includes the symmetry operator and encoded unit-cell translations to be applied.

Atom-1	Atom-2	Interatomic distance (Å)	Clash overlap (Å)
1:A:59:VAL:O	1:B:61:ARG:NH2[1_565]	2.11	0.09

## 5.3 Torsion angles [i](#)

### 5.3.1 Protein backbone [i](#)

In the following table, the Percentiles column shows the percent Ramachandran outliers of the chain as a percentile score with respect to all X-ray entries followed by that with respect to entries of similar resolution.

The Analysed column shows the number of residues for which the backbone conformation was analysed, and the total number of residues.

Mol	Chain	Analysed	Favoured	Allowed	Outliers	Percentiles	
1	A	299/301 (99%)	282 (94%)	11 (4%)	6 (2%)	7	3
1	B	299/301 (99%)	278 (93%)	19 (6%)	2 (1%)	22	18
All	All	598/602 (99%)	560 (94%)	30 (5%)	8 (1%)	12	7

All (8) Ramachandran outliers are listed below:

Mol	Chain	Res	Type
1	A	24	ASN
1	A	47	THR
1	A	282	SER
1	B	153	ASN
1	A	275	LYS
1	A	94	ASN
1	B	271	ASN
1	A	46	SER

### 5.3.2 Protein sidechains [i](#)

In the following table, the Percentiles column shows the percent sidechain outliers of the chain as a percentile score with respect to all X-ray entries followed by that with respect to entries of similar resolution.

The Analysed column shows the number of residues for which the sidechain conformation was analysed, and the total number of residues.

Mol	Chain	Analysed	Rotameric	Outliers	Percentiles	
1	A	249/249 (100%)	239 (96%)	10 (4%)	31	32
1	B	249/249 (100%)	243 (98%)	6 (2%)	49	53
All	All	498/498 (100%)	482 (97%)	16 (3%)	39	41

All (16) residues with a non-rotameric sidechain are listed below:

Mol	Chain	Res	Type
1	A	12	VAL
1	A	71	ASN
1	A	91	ASN
1	A	136	ARG
1	A	201	GLU
1	A	272	PHE
1	A	281	THR
1	A	294	ARG
1	A	299	VAL
1	A	301	LEU
1	B	8	GLN
1	B	27	LEU
1	B	50	THR
1	B	150	ASN
1	B	171	HIS
1	B	280	TYR

Sometimes sidechains can be flipped to improve hydrogen bonding and reduce clashes. All (8) such sidechains are listed below:

Mol	Chain	Res	Type
1	A	91	ASN
1	A	93	ASN
1	A	187	GLN
1	A	236	ASN
1	B	8	GLN
1	B	150	ASN
1	B	202	ASN
1	B	243	ASN

### 5.3.3 RNA [i](#)

There are no RNA molecules in this entry.

## 5.4 Non-standard residues in protein, DNA, RNA chains [i](#)

There are no non-standard protein/DNA/RNA residues in this entry.

## 5.5 Carbohydrates [i](#)

There are no monosaccharides in this entry.

## 5.6 Ligand geometry

10 ligands are modelled in this entry.

In the following table, the Counts columns list the number of bonds (or angles) for which Mogul statistics could be retrieved, the number of bonds (or angles) that are observed in the model and the number of bonds (or angles) that are defined in the Chemical Component Dictionary. The Link column lists molecule types, if any, to which the group is linked. The Z score for a bond length (or angle) is the number of standard deviations the observed value is removed from the expected value. A bond length (or angle) with  $|Z| > 2$  is considered an outlier worth inspection. RMSZ is the root-mean-square of all Z scores of the bond lengths (or angles).

Mol	Type	Chain	Res	Link	Bond lengths			Bond angles		
					Counts	RMSZ	$\# Z  > 2$	Counts	RMSZ	$\# Z  > 2$
2	IPA	A	405	-	3,3,3	0.54	0	3,3,3	0.40	0
2	IPA	A	402	-	3,3,3	0.56	0	3,3,3	0.20	0
4	DMS	A	407	-	3,3,3	0.65	0	3,3,3	0.76	0
2	IPA	A	403	-	3,3,3	0.47	0	3,3,3	0.42	0
2	IPA	B	402	-	3,3,3	0.62	0	3,3,3	0.18	0
3	MPD	B	403	-	7,7,7	0.27	0	9,10,10	1.52	1 (11%)
2	IPA	A	401	-	3,3,3	0.57	0	3,3,3	0.28	0
2	IPA	B	401	-	3,3,3	0.55	0	3,3,3	0.38	0
2	IPA	A	404	-	3,3,3	0.57	0	3,3,3	0.21	0
3	MPD	A	406	-	7,7,7	0.35	0	9,10,10	0.30	0

In the following table, the Chirals column lists the number of chiral outliers, the number of chiral centers analysed, the number of these observed in the model and the number defined in the Chemical Component Dictionary. Similar counts are reported in the Torsion and Rings columns. '-' means no outliers of that kind were identified.

Mol	Type	Chain	Res	Link	Chirals	Torsions	Rings
3	MPD	A	406	-	-	2/5/5/5	-
3	MPD	B	403	-	-	2/5/5/5	-

There are no bond length outliers.

All (1) bond angle outliers are listed below:

Mol	Chain	Res	Type	Atoms	Z	Observed(°)	Ideal(°)
3	B	403	MPD	CM-C2-C1	-3.79	102.68	110.57

There are no chirality outliers.

All (4) torsion outliers are listed below:

Mol	Chain	Res	Type	Atoms
3	B	403	MPD	C2-C3-C4-O4
3	A	406	MPD	O2-C2-C3-C4
3	B	403	MPD	C2-C3-C4-C5
3	A	406	MPD	C2-C3-C4-C5

There are no ring outliers.

2 monomers are involved in 7 short contacts:

Mol	Chain	Res	Type	Clashes	Symm-Clashes
3	B	403	MPD	4	0
3	A	406	MPD	3	0

## 5.7 Other polymers [i](#)

There are no such residues in this entry.

## 5.8 Polymer linkage issues [i](#)

There are no chain breaks in this entry.



## 6 Fit of model and data

### 6.1 Protein, DNA and RNA chains

In the following table, the column labelled ‘#RSRZ > 2’ contains the number (and percentage) of RSRZ outliers, followed by percent RSRZ outliers for the chain as percentile scores relative to all X-ray entries and entries of similar resolution. The OWAB column contains the minimum, median, 95<sup>th</sup> percentile and maximum values of the occupancy-weighted average B-factor per residue. The column labelled ‘Q < 0.9’ lists the number of (and percentage) of residues with an average occupancy less than 0.9.

Mol	Chain	Analysed	<RSRZ>	#RSRZ>2			OWAB(Å <sup>2</sup> )	Q<0.9
1	A	301/301 (100%)	0.12	9 (2%)	50	56	22, 44, 88, 186	0
1	B	301/301 (100%)	0.02	12 (3%)	38	44	18, 42, 95, 183	0
All	All	602/602 (100%)	0.07	21 (3%)	44	50	18, 43, 93, 186	0

All (21) RSRZ outliers are listed below:

Mol	Chain	Res	Type	RSRZ
1	A	273	GLY	23.6
1	B	272	PHE	18.5
1	A	272	PHE	9.5
1	B	273	GLY	8.3
1	B	274	GLY	8.1
1	A	47	THR	7.9
1	B	280	TYR	7.0
1	A	274	GLY	4.9
1	B	301	LEU	4.8
1	B	226	VAL	4.0
1	B	271	ASN	3.7
1	B	72	VAL	2.9
1	A	48	THR	2.7
1	A	46	SER	2.6
1	A	71	ASN	2.5
1	B	244	THR	2.5
1	A	282	SER	2.5
1	B	279	GLY	2.2
1	B	283	LEU	2.1
1	A	244	THR	2.1
1	B	242	VAL	2.0

## 6.2 Non-standard residues in protein, DNA, RNA chains [i](#)

There are no non-standard protein/DNA/RNA residues in this entry.

## 6.3 Carbohydrates [i](#)

There are no monosaccharides in this entry.

## 6.4 Ligands [i](#)

In the following table, the Atoms column lists the number of modelled atoms in the group and the number defined in the chemical component dictionary. The B-factors column lists the minimum, median, 95<sup>th</sup> percentile and maximum values of B factors of atoms in the group. The column labelled 'Q< 0.9' lists the number of atoms with occupancy less than 0.9.

Mol	Type	Chain	Res	Atoms	RSCC	RSR	B-factors( $\text{\AA}^2$ )	Q<0.9
2	IPA	A	404	4/4	0.75	0.23	70,70,74,76	0
2	IPA	A	402	4/4	0.78	0.21	45,50,51,54	0
2	IPA	A	401	4/4	0.86	0.23	52,54,56,57	0
3	MPD	A	406	8/8	0.88	0.21	53,60,67,68	0
2	IPA	B	402	4/4	0.89	0.15	37,39,47,48	0
2	IPA	A	403	4/4	0.89	0.19	42,43,44,56	0
3	MPD	B	403	8/8	0.89	0.16	26,30,40,46	0
2	IPA	B	401	4/4	0.91	0.17	32,40,40,46	0
4	DMS	A	407	4/4	0.93	0.12	54,62,63,69	0
2	IPA	A	405	4/4	0.95	0.13	37,41,44,48	0

## 6.5 Other polymers [i](#)

There are no such residues in this entry.