



wwPDB X-ray Structure Validation Summary Report ⓘ

Mar 19, 2025 – 01:14 PM EDT

PDB ID : 1I1K
Title : CRYSTAL STRUCTURE OF ESCHERICHIA COLI BRANCHED-CHAIN AMINO ACID AMINOTRANSFERASE.
Authors : Okada, K.; Hirotsu, K.; Hayashi, H.; Kagamiyama, H.
Deposited on : 2001-02-02
Resolution : 2.10 Å(reported)

This is a wwPDB X-ray Structure Validation Summary Report for a publicly released PDB entry.

We welcome your comments at validation@mail.wwpdb.org

A user guide is available at

<https://www.wwpdb.org/validation/2017/XrayValidationReportHelp>

with specific help available everywhere you see the ⓘ symbol.

The types of validation reports are described at

<http://www.wwpdb.org/validation/2017/FAQs#types>.

The following versions of software and data (see [references ⓘ](#)) were used in the production of this report:

MolProbity	:	4.02b-467
Mogul	:	2022.3.0, CSD as543be (2022)
Xtriage (Phenix)	:	NOT EXECUTED
EDS	:	NOT EXECUTED
Percentile statistics	:	20231227.v01 (using entries in the PDB archive December 27th 2023)
Ideal geometry (proteins)	:	Engh & Huber (2001)
Ideal geometry (DNA, RNA)	:	Parkinson et al. (1996)
Validation Pipeline (wwPDB-VP)	:	2.41.4

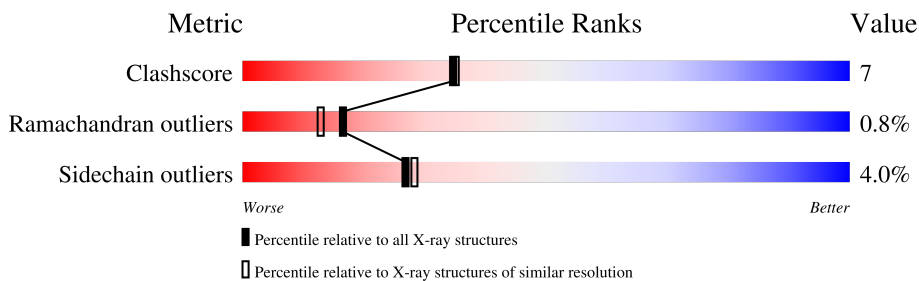
1 Overall quality at a glance

The following experimental techniques were used to determine the structure:

X-RAY DIFFRACTION

The reported resolution of this entry is 2.10 Å.

Percentile scores (ranging between 0-100) for global validation metrics of the entry are shown in the following graphic. The table shows the number of entries on which the scores are based.



Metric	Whole archive (#Entries)	Similar resolution (#Entries, resolution range(Å))
Clashscore	180529	6893 (2.10-2.10)
Ramachandran outliers	177936	6839 (2.10-2.10)
Sidechain outliers	177891	6840 (2.10-2.10)

The table below summarises the geometric issues observed across the polymeric chains and their fit to the electron density. The red, orange, yellow and green segments of the lower bar indicate the fraction of residues that contain outliers for ≥ 3 , 2, 1 and 0 types of geometric quality criteria respectively. A grey segment represents the fraction of residues that are not modelled. The numeric value for each fraction is indicated below the corresponding segment, with a dot representing fractions $\leq 5\%$.

Note EDS was not executed.

Mol	Chain	Length	Quality of chain
1	A	309	
1	B	309	
1	C	309	

2 Entry composition [i](#)

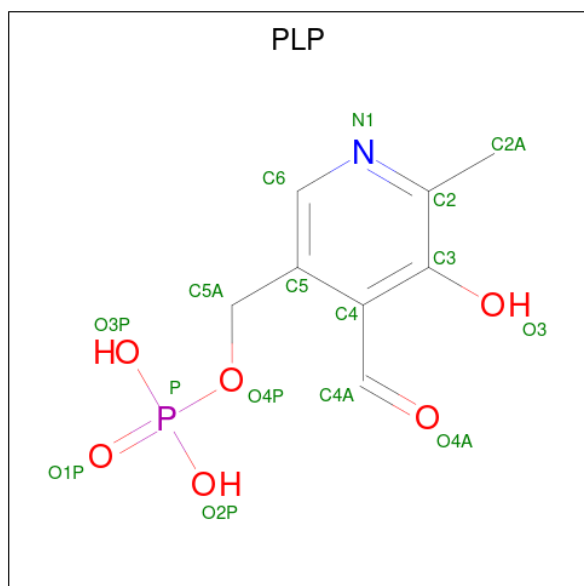
There are 3 unique types of molecules in this entry. The entry contains 7324 atoms, of which 0 are hydrogens and 0 are deuteriums.

In the tables below, the ZeroOcc column contains the number of atoms modelled with zero occupancy, the AltConf column contains the number of residues with at least one atom in alternate conformation and the Trace column contains the number of residues modelled with at most 2 atoms.

- Molecule 1 is a protein called BRANCHED-CHAIN AMINO ACID AMINOTRANSFERASE.

Mol	Chain	Residues	Atoms					ZeroOcc	AltConf	Trace
1	A	298	Total	C	N	O	S	0	0	0
			2325	1474	405	436	10			
1	B	298	Total	C	N	O	S	0	0	0
			2325	1474	405	436	10			
1	C	298	Total	C	N	O	S	0	0	0
			2325	1474	405	436	10			

- Molecule 2 is PYRIDOXAL-5'-PHOSPHATE (three-letter code: PLP) (formula: $C_8H_{10}NO_6P$).



Mol	Chain	Residues	Atoms					ZeroOcc	AltConf
2	A	1	Total	C	N	O	P	0	0
			15	8	1	5	1		
2	B	1	Total	C	N	O	P	0	0
			15	8	1	5	1		
2	C	1	Total	C	N	O	P	0	0
			15	8	1	5	1		

- Molecule 3 is water.

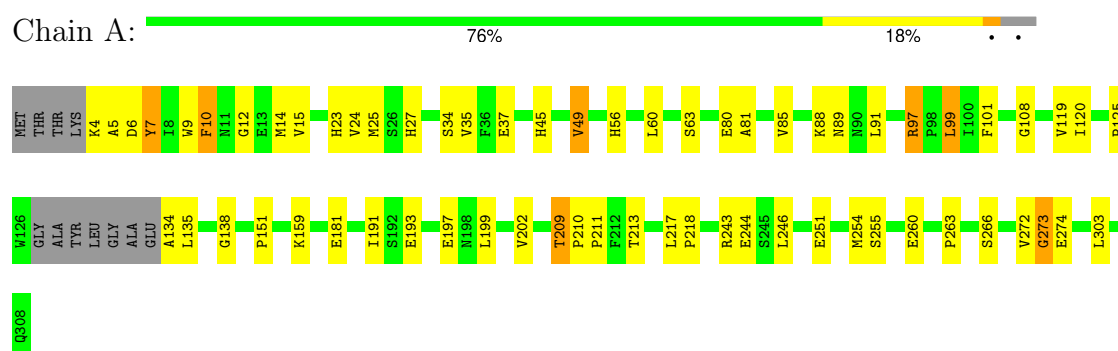
Mol	Chain	Residues	Atoms		ZeroOcc	AltConf
3	A	94	Total 94	O 94	0	0
3	B	96	Total 96	O 96	0	0
3	C	114	Total 114	O 114	0	0

3 Residue-property plots [i](#)

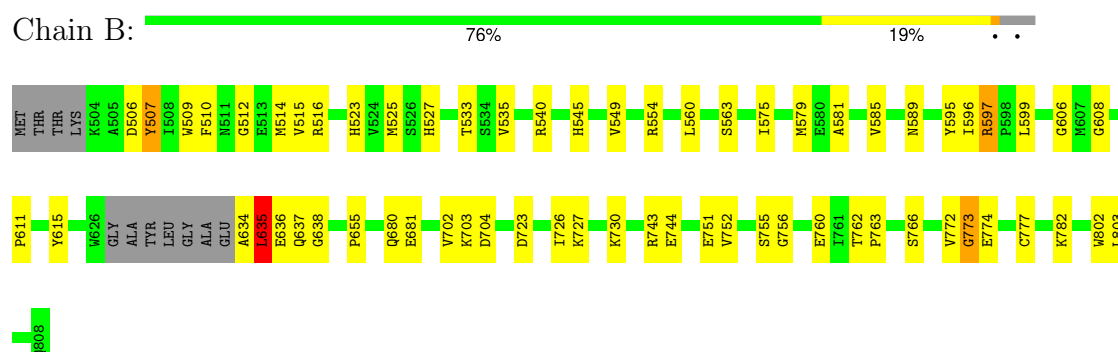
These plots are drawn for all protein, RNA, DNA and oligosaccharide chains in the entry. The first graphic for a chain summarises the proportions of the various outlier classes displayed in the second graphic. The second graphic shows the sequence view annotated by issues in geometry. Residues are color-coded according to the number of geometric quality criteria for which they contain at least one outlier: green = 0, yellow = 1, orange = 2 and red = 3 or more. Stretches of 2 or more consecutive residues without any outlier are shown as a green connector. Residues present in the sample, but not in the model, are shown in grey.

Note EDS was not executed.

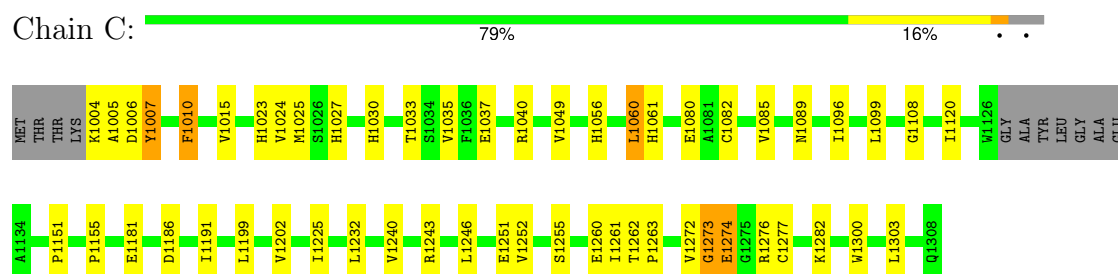
• Molecule 1: BRANCHED-CHAIN AMINO ACID AMINOTRANSFERASE



• Molecule 1: BRANCHED-CHAIN AMINO ACID AMINOTRANSFERASE



• Molecule 1: BRANCHED-CHAIN AMINO ACID AMINOTRANSFERASE



4 Data and refinement statistics

Xtriage (Phenix) and EDS were not executed - this section is therefore incomplete.

Property	Value	Source
Space group	C 2 2 21	Depositor
Cell constants a, b, c, α , β , γ	100.93Å 156.06Å 141.53Å 90.00° 90.00° 90.00°	Depositor
Resolution (Å)	30.00 – 2.10	Depositor
% Data completeness (in resolution range)	(Not available) (30.00-2.10)	Depositor
R_{merge}	(Not available)	Depositor
R_{sym}	(Not available)	Depositor
Refinement program	X-PLOR 3.851	Depositor
R, R_{free}	0.189 , 0.231	Depositor
Estimated twinning fraction	No twinning to report.	Xtriage
Total number of atoms	7324	wwPDB-VP
Average B, all atoms (Å ²)	23.0	wwPDB-VP

5 Model quality [i](#)

5.1 Standard geometry [i](#)

Bond lengths and bond angles in the following residue types are not validated in this section: PLP

The Z score for a bond length (or angle) is the number of standard deviations the observed value is removed from the expected value. A bond length (or angle) with $|Z| > 5$ is considered an outlier worth inspection. RMSZ is the root-mean-square of all Z scores of the bond lengths (or angles).

Mol	Chain	Bond lengths		Bond angles	
		RMSZ	$\# Z > 5$	RMSZ	$\# Z > 5$
1	A	0.39	1/2379 (0.0%)	0.63	0/3223
1	B	0.40	1/2379 (0.0%)	0.61	0/3223
1	C	0.38	1/2379 (0.0%)	0.63	1/3223 (0.0%)
All	All	0.39	3/7137 (0.0%)	0.63	1/9669 (0.0%)

All (3) bond length outliers are listed below:

Mol	Chain	Res	Type	Atoms	Z	Observed(Å)	Ideal(Å)
1	B	681	GLU	CD-OE2	7.48	1.33	1.25
1	C	1181	GLU	CD-OE2	7.39	1.33	1.25
1	A	181	GLU	CD-OE2	7.17	1.33	1.25

All (1) bond angle outliers are listed below:

Mol	Chain	Res	Type	Atoms	Z	Observed(°)	Ideal(°)
1	C	1199	LEU	CA-CB-CG	5.51	127.96	115.30

There are no chirality outliers.

There are no planarity outliers.

5.2 Too-close contacts [i](#)

In the following table, the Non-H and H(model) columns list the number of non-hydrogen atoms and hydrogen atoms in the chain respectively. The H(added) column lists the number of hydrogen atoms added and optimized by MolProbity. The Clashes column lists the number of clashes within the asymmetric unit, whereas Symm-Clashes lists symmetry-related clashes.

Mol	Chain	Non-H	H(model)	H(added)	Clashes	Symm-Clashes
1	A	2325	0	2265	35	0

Continued on next page...

Continued from previous page...

Mol	Chain	Non-H	H(model)	H(added)	Clashes	Symm-Clashes
1	B	2325	0	2265	40	0
1	C	2325	0	2265	31	0
2	A	15	0	7	2	0
2	B	15	0	7	0	0
2	C	15	0	7	0	0
3	A	94	0	0	1	0
3	B	96	0	0	1	0
3	C	114	0	0	3	0
All	All	7324	0	6816	103	0

The all-atom clashscore is defined as the number of clashes found per 1000 atoms (including hydrogen atoms). The all-atom clashscore for this structure is 7.

The worst 5 of 103 close contacts within the same asymmetric unit are listed below, sorted by their clash magnitude.

Atom-1	Atom-2	Interatomic distance (Å)	Clash overlap (Å)
1:B:634:ALA:HA	1:B:762:THR:HG23	1.63	0.80
1:B:549:VAL:HG21	1:B:803:LEU:HB3	1.66	0.77
1:B:752:VAL:HG12	1:B:772:VAL:HG11	1.67	0.75
1:C:1049:VAL:HG21	1:C:1303:LEU:HB3	1.69	0.74
1:B:606:GLY:HA3	3:B:287:HOH:O	1.91	0.71

There are no symmetry-related clashes.

5.3 Torsion angles [i](#)

5.3.1 Protein backbone [i](#)

In the following table, the Percentiles column shows the percent Ramachandran outliers of the chain as a percentile score with respect to all X-ray entries followed by that with respect to entries of similar resolution.

The Analysed column shows the number of residues for which the backbone conformation was analysed, and the total number of residues.

Mol	Chain	Analysed	Favoured	Allowed	Outliers	Percentiles	
1	A	294/309 (95%)	279 (95%)	13 (4%)	2 (1%)	19	16
1	B	294/309 (95%)	277 (94%)	14 (5%)	3 (1%)	13	9
1	C	294/309 (95%)	277 (94%)	15 (5%)	2 (1%)	19	16

Continued on next page...

Continued from previous page...

Mol	Chain	Analysed	Favoured	Allowed	Outliers	Percentiles	
All	All	882/927 (95%)	833 (94%)	42 (5%)	7 (1%)	16	13

5 of 7 Ramachandran outliers are listed below:

Mol	Chain	Res	Type
1	A	7	TYR
1	B	507	TYR
1	C	1007	TYR
1	A	273	GLY
1	B	773	GLY

5.3.2 Protein sidechains ⓘ

In the following table, the Percentiles column shows the percent sidechain outliers of the chain as a percentile score with respect to all X-ray entries followed by that with respect to entries of similar resolution.

The Analysed column shows the number of residues for which the sidechain conformation was analysed, and the total number of residues.

Mol	Chain	Analysed	Rotameric	Outliers	Percentiles	
1	A	244/251 (97%)	234 (96%)	10 (4%)	26	27
1	B	244/251 (97%)	236 (97%)	8 (3%)	33	36
1	C	244/251 (97%)	233 (96%)	11 (4%)	23	24
All	All	732/753 (97%)	703 (96%)	29 (4%)	27	28

5 of 29 residues with a non-rotameric sidechain are listed below:

Mol	Chain	Res	Type
1	B	635	LEU
1	C	1276	ARG
1	B	743	ARG
1	C	1232	LEU
1	B	680	GLN

Sometimes sidechains can be flipped to improve hydrogen bonding and reduce clashes. 5 of 21 such sidechains are listed below:

Mol	Chain	Res	Type
1	C	1023	HIS
1	C	1045	HIS

Continued on next page...

Continued from previous page...

Mol	Chain	Res	Type
1	C	1198	ASN
1	C	1056	HIS
1	C	1030	HIS

5.3.3 RNA [i](#)

There are no RNA molecules in this entry.

5.4 Non-standard residues in protein, DNA, RNA chains [i](#)

There are no non-standard protein/DNA/RNA residues in this entry.

5.5 Carbohydrates [i](#)

There are no oligosaccharides in this entry.

5.6 Ligand geometry [i](#)

3 ligands are modelled in this entry.

In the following table, the Counts columns list the number of bonds (or angles) for which Mogul statistics could be retrieved, the number of bonds (or angles) that are observed in the model and the number of bonds (or angles) that are defined in the Chemical Component Dictionary. The Link column lists molecule types, if any, to which the group is linked. The Z score for a bond length (or angle) is the number of standard deviations the observed value is removed from the expected value. A bond length (or angle) with $|Z| > 2$ is considered an outlier worth inspection. RMSZ is the root-mean-square of all Z scores of the bond lengths (or angles).

Mol	Type	Chain	Res	Link	Bond lengths			Bond angles		
					Counts	RMSZ	# Z > 2	Counts	RMSZ	# Z > 2
2	PLP	B	913	1	15,15,16	1.44	2 (13%)	21,22,23	1.67	5 (23%)
2	PLP	A	413	1	15,15,16	1.25	2 (13%)	21,22,23	1.21	3 (14%)
2	PLP	C	1413	1	15,15,16	1.30	2 (13%)	21,22,23	1.39	4 (19%)

In the following table, the Chirals column lists the number of chiral outliers, the number of chiral centers analysed, the number of these observed in the model and the number defined in the Chemical Component Dictionary. Similar counts are reported in the Torsion and Rings columns. '-' means no outliers of that kind were identified.

Mol	Type	Chain	Res	Link	Chirals	Torsions	Rings
2	PLP	B	913	1	-	2/6/6/8	0/1/1/1
2	PLP	A	413	1	-	0/6/6/8	0/1/1/1
2	PLP	C	1413	1	-	0/6/6/8	0/1/1/1

The worst 5 of 6 bond length outliers are listed below:

Mol	Chain	Res	Type	Atoms	Z	Observed(Å)	Ideal(Å)
2	B	913	PLP	C3-C2	-3.54	1.37	1.41
2	C	1413	PLP	C3-C2	-2.80	1.38	1.41
2	A	413	PLP	C3-C2	-2.51	1.38	1.41
2	B	913	PLP	P-O3P	-2.48	1.45	1.54
2	C	1413	PLP	P-O3P	-2.19	1.46	1.54

The worst 5 of 12 bond angle outliers are listed below:

Mol	Chain	Res	Type	Atoms	Z	Observed(°)	Ideal(°)
2	B	913	PLP	O4P-C5A-C5	5.09	118.89	109.36
2	C	1413	PLP	O2P-P-O4P	-3.23	98.24	106.67
2	B	913	PLP	O2P-P-O4P	-2.83	99.29	106.67
2	C	1413	PLP	O4P-C5A-C5	2.54	114.12	109.36
2	A	413	PLP	O3P-P-O1P	2.44	120.33	110.83

There are no chirality outliers.

All (2) torsion outliers are listed below:

Mol	Chain	Res	Type	Atoms
2	B	913	PLP	C5A-O4P-P-O2P
2	B	913	PLP	C5A-O4P-P-O3P

There are no ring outliers.

1 monomer is involved in 2 short contacts:

Mol	Chain	Res	Type	Clashes	Symm-Clashes
2	A	413	PLP	2	0

5.7 Other polymers

There are no such residues in this entry.

5.8 Polymer linkage issues ⓘ

There are no chain breaks in this entry.

6 Fit of model and data [i](#)

6.1 Protein, DNA and RNA chains [i](#)

EDS was not executed - this section is therefore empty.

6.2 Non-standard residues in protein, DNA, RNA chains [i](#)

EDS was not executed - this section is therefore empty.

6.3 Carbohydrates [i](#)

EDS was not executed - this section is therefore empty.

6.4 Ligands [i](#)

EDS was not executed - this section is therefore empty.

6.5 Other polymers [i](#)

EDS was not executed - this section is therefore empty.