



Full wwPDB X-ray Structure Validation Report ⓘ

Mar 19, 2025 – 01:03 AM EDT

PDB ID : 1I2K
Title : AMINODEOXYCHORISMATE LYASE FROM ESCHERICHIA COLI
Authors : Jensen, P.Y.; Parsons, J.F.; Fisher, K.E.; Pachikara, A.S.; Tordova, M.;
Howard, A.J.; Eisenstein, E.; Ladner, J.E.
Deposited on : 2001-02-09
Resolution : 1.79 Å(reported)

This is a Full wwPDB X-ray Structure Validation Report for a publicly released PDB entry.

We welcome your comments at validation@mail.wwpdb.org

A user guide is available at

<https://www.wwpdb.org/validation/2017/XrayValidationReportHelp>

with specific help available everywhere you see the ⓘ symbol.

The types of validation reports are described at

<http://www.wwpdb.org/validation/2017/FAQs#types>.

The following versions of software and data (see [references ⓘ](#)) were used in the production of this report:

MolProbity	:	4.02b-467
Mogul	:	2022.3.0, CSD as543be (2022)
Xtriage (Phenix)	:	1.21
EDS	:	3.0
Percentile statistics	:	20231227.v01 (using entries in the PDB archive December 27th 2023)
CCP4	:	9.0.004 (Gargrove)
Density-Fitness	:	1.0.11
Ideal geometry (proteins)	:	Engh & Huber (2001)
Ideal geometry (DNA, RNA)	:	Parkinson et al. (1996)
Validation Pipeline (wwPDB-VP)	:	2.41.4

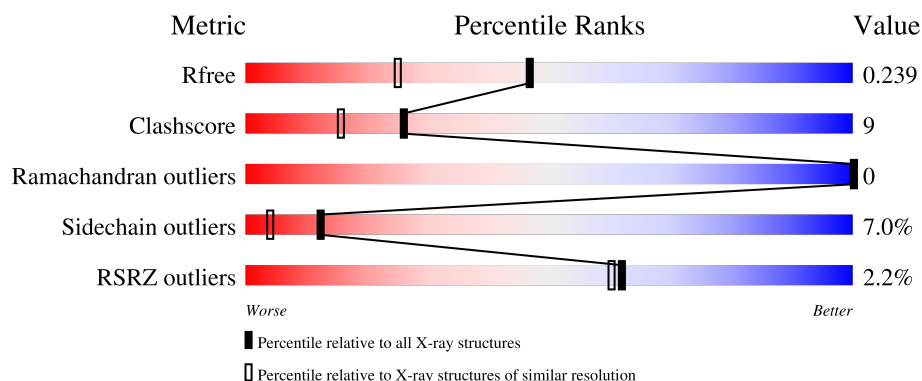
1 Overall quality at a glance

The following experimental techniques were used to determine the structure:

X-RAY DIFFRACTION


The reported resolution of this entry is 1.79 Å.

Percentile scores (ranging between 0-100) for global validation metrics of the entry are shown in the following graphic. The table shows the number of entries on which the scores are based.



Metric	Whole archive (#Entries)	Similar resolution (#Entries, resolution range(Å))
R_{free}	164625	7108 (1.80-1.80)
Clashscore	180529	8162 (1.80-1.80)
Ramachandran outliers	177936	8077 (1.80-1.80)
Sidechain outliers	177891	8076 (1.80-1.80)
RSRZ outliers	164620	7108 (1.80-1.80)

The table below summarises the geometric issues observed across the polymeric chains and their fit to the electron density. The red, orange, yellow and green segments of the lower bar indicate the fraction of residues that contain outliers for ≥ 3 , 2, 1 and 0 types of geometric quality criteria respectively. A grey segment represents the fraction of residues that are not modelled. The numeric value for each fraction is indicated below the corresponding segment, with a dot representing fractions $\leq 5\%$. The upper red bar (where present) indicates the fraction of residues that have poor fit to the electron density. The numeric value is given above the bar.

Mol	Chain	Length	Quality of chain
1	A	269	

2 Entry composition [i](#)

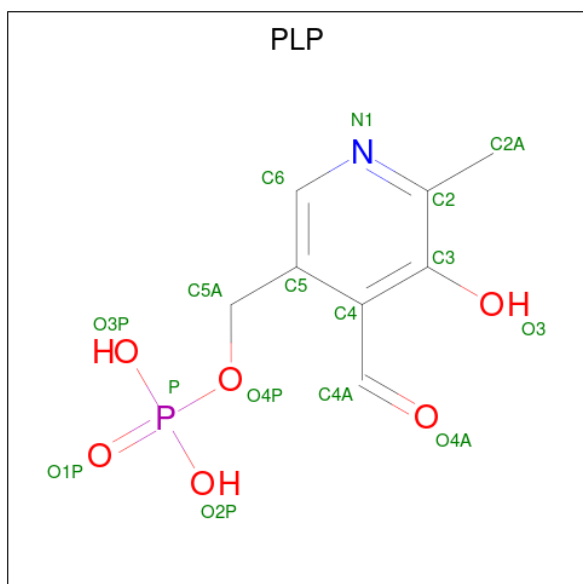
There are 3 unique types of molecules in this entry. The entry contains 2346 atoms, of which 0 are hydrogens and 0 are deuteriums.

In the tables below, the ZeroOcc column contains the number of atoms modelled with zero occupancy, the AltConf column contains the number of residues with at least one atom in alternate conformation and the Trace column contains the number of residues modelled with at most 2 atoms.

- Molecule 1 is a protein called 4-AMINO-4-DEOXYCHORISMATE LYASE.

Mol	Chain	Residues	Atoms					ZeroOcc	AltConf	Trace
			Total	C	N	O	S			
1	A	269	2119	1328	375	397	19	0	12	0

- Molecule 2 is PYRIDOXAL-5'-PHOSPHATE (three-letter code: PLP) (formula: $C_8H_{10}NO_6P$).



Mol	Chain	Residues	Atoms					ZeroOcc	AltConf
			Total	C	N	O	P		
2	A	1	15	8	1	5	1	0	0

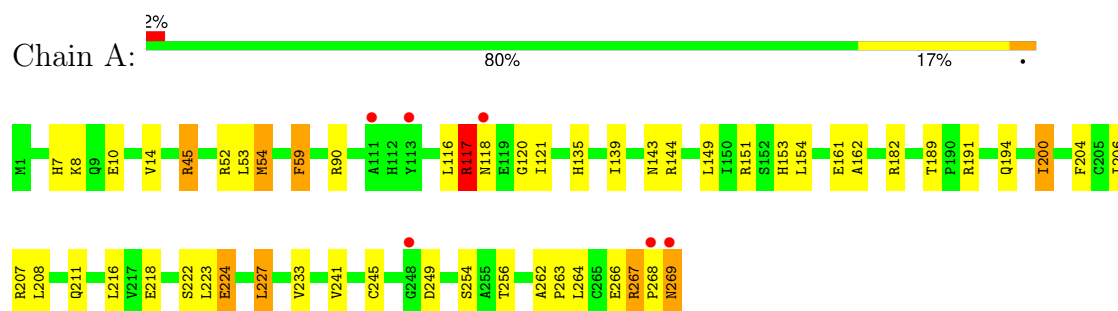
- Molecule 3 is water.

Mol	Chain	Residues	Atoms		ZeroOcc	AltConf
3	A	212	Total	O	0	0
			212	212		

3 Residue-property plots

These plots are drawn for all protein, RNA, DNA and oligosaccharide chains in the entry. The first graphic for a chain summarises the proportions of the various outlier classes displayed in the second graphic. The second graphic shows the sequence view annotated by issues in geometry and electron density. Residues are color-coded according to the number of geometric quality criteria for which they contain at least one outlier: green = 0, yellow = 1, orange = 2 and red = 3 or more. A red dot above a residue indicates a poor fit to the electron density ($RSRZ > 2$). Stretches of 2 or more consecutive residues without any outlier are shown as a green connector. Residues present in the sample, but not in the model, are shown in grey.

• Molecule 1: 4-AMINO-4-DEOXYCHORISMATE LYASE



4 Data and refinement statistics

Property	Value	Source
Space group	P 21 21 2	Depositor
Cell constants a, b, c, α , β , γ	40.05Å 72.97Å 82.87Å 90.00° 90.00° 90.00°	Depositor
Resolution (Å)	10.00 – 1.79 10.00 – 1.79	Depositor EDS
% Data completeness (in resolution range)	93.1 (10.00-1.79) 97.3 (10.00-1.79)	Depositor EDS
R_{merge}	0.09	Depositor
R_{sym}	(Not available)	Depositor
$\langle I/\sigma(I) \rangle$ ¹	5.89 (at 1.79Å)	Xtriage
Refinement program	SHELXL-97	Depositor
R, R_{free}	0.164 , 0.248 0.166 , 0.239	Depositor DCC
R_{free} test set	1153 reflections (5.06%)	wwPDB-VP
Wilson B-factor (Å ²)	15.6	Xtriage
Anisotropy	0.263	Xtriage
Bulk solvent k_{sol} (e/Å ³), B_{sol} (Å ²)	0.38 , 71.9	EDS
L-test for twinning ²	$\langle L \rangle = 0.45$, $\langle L^2 \rangle = 0.28$	Xtriage
Estimated twinning fraction	No twinning to report.	Xtriage
F_o, F_c correlation	0.96	EDS
Total number of atoms	2346	wwPDB-VP
Average B, all atoms (Å ²)	22.0	wwPDB-VP

Xtriage's analysis on translational NCS is as follows: *The largest off-origin peak in the Patterson function is 8.78% of the height of the origin peak. No significant pseudotranslation is detected.*

¹Intensities estimated from amplitudes.

²Theoretical values of $\langle |L| \rangle$, $\langle L^2 \rangle$ for acentric reflections are 0.5, 0.333 respectively for untwinned datasets, and 0.375, 0.2 for perfectly twinned datasets.

5 Model quality [i](#)

5.1 Standard geometry [i](#)

Bond lengths and bond angles in the following residue types are not validated in this section: PLP

The Z score for a bond length (or angle) is the number of standard deviations the observed value is removed from the expected value. A bond length (or angle) with $|Z| > 5$ is considered an outlier worth inspection. RMSZ is the root-mean-square of all Z scores of the bond lengths (or angles).

Mol	Chain	Bond lengths		Bond angles	
		RMSZ	$\# Z > 5$	RMSZ	$\# Z > 5$
1	A	0.41	0/2202	1.05	3/2983 (0.1%)

There are no bond length outliers.

All (3) bond angle outliers are listed below:

Mol	Chain	Res	Type	Atoms	Z	Observed(°)	Ideal(°)
1	A	59	PHE	CB-CG-CD1	5.93	124.95	120.80
1	A	117	ARG	CD-NE-CZ	5.46	131.24	123.60
1	A	144	ARG	NE-CZ-NH1	5.09	122.84	120.30

There are no chirality outliers.

There are no planarity outliers.

5.2 Too-close contacts [i](#)

In the following table, the Non-H and H(model) columns list the number of non-hydrogen atoms and hydrogen atoms in the chain respectively. The H(added) column lists the number of hydrogen atoms added and optimized by MolProbity. The Clashes column lists the number of clashes within the asymmetric unit, whereas Symm-Clashes lists symmetry-related clashes.

Mol	Chain	Non-H	H(model)	H(added)	Clashes	Symm-Clashes
1	A	2119	0	2122	40	0
2	A	15	0	7	0	0
3	A	212	0	0	5	0
All	All	2346	0	2129	40	0

The all-atom clashscore is defined as the number of clashes found per 1000 atoms (including hydrogen atoms). The all-atom clashscore for this structure is 9.

All (40) close contacts within the same asymmetric unit are listed below, sorted by their clash magnitude.

Atom-1	Atom-2	Interatomic distance (Å)	Clash overlap (Å)
1:A:151:ARG:HB3	3:A:507:HOH:O	1.87	0.74
1:A:116:LEU:HD22	1:A:121:ILE:HD13	1.70	0.74
1:A:254:SER:OG	1:A:256:THR:HG23	1.90	0.71
1:A:154[A]:LEU:HD12	1:A:162:ALA:HB2	1.79	0.63
1:A:52:ARG:HD3	1:A:139[A]:ILE:HD11	1.82	0.60
1:A:267:ARG:HB2	1:A:269:ASN:O	2.04	0.58
1:A:120:GLY:HA3	1:A:245[A]:CYS:SG	2.44	0.57
1:A:223:LEU:HG	1:A:227:LEU:HD22	1.85	0.57
1:A:204:PHE:HZ	1:A:269:ASN:HB2	1.68	0.57
1:A:267:ARG:HG3	1:A:269:ASN:H	1.70	0.56
1:A:149:LEU:O	1:A:153:HIS:HD2	1.90	0.55
1:A:264:LEU:HD22	1:A:269:ASN:HD21	1.71	0.55
1:A:208:LEU:O	1:A:211:GLN:HG3	2.08	0.54
1:A:10:GLU:HA	1:A:10:GLU:OE1	2.08	0.54
1:A:222:SER:OG	1:A:224:GLU:HG3	2.09	0.52
1:A:254:SER:HG	1:A:256:THR:HG23	1.77	0.50
1:A:267:ARG:HG3	1:A:269:ASN:N	2.26	0.49
1:A:117:ARG:HG3	1:A:117:ARG:HH11	1.77	0.49
1:A:154[A]:LEU:HD11	1:A:161:GLU:HA	1.95	0.49
1:A:45:ARG:HB3	1:A:200:ILE:HD11	1.95	0.48
1:A:53:LEU:O	1:A:54[B]:MET:HB2	2.13	0.47
1:A:267:ARG:HB2	1:A:269:ASN:N	2.31	0.45
1:A:263:PRO:O	1:A:267:ARG:HG2	2.16	0.45
1:A:264:LEU:O	1:A:269:ASN:N	2.50	0.45
1:A:268:PRO:HB3	3:A:575:HOH:O	2.16	0.44
1:A:206:ILE:HG23	1:A:216[A]:LEU:CD2	2.47	0.44
1:A:189:THR:O	1:A:218:GLU:HA	2.18	0.44
1:A:262:ALA:N	1:A:263:PRO:HD2	2.33	0.43
1:A:269:ASN:HD22	1:A:269:ASN:HA	1.52	0.43
1:A:14:VAL:O	1:A:14:VAL:HG12	2.18	0.43
1:A:194:GLN:NE2	3:A:536:HOH:O	2.50	0.43
1:A:118:ASN:OD1	1:A:118:ASN:N	2.50	0.43
1:A:206:ILE:HG23	1:A:216[A]:LEU:HD21	2.01	0.42
1:A:264:LEU:HD22	1:A:269:ASN:ND2	2.34	0.42
1:A:267:ARG:N	1:A:268:PRO:HA	2.34	0.42
1:A:233:VAL:CG1	1:A:241[A]:VAL:HG13	2.49	0.42
1:A:135:HIS:HD2	3:A:495:HOH:O	2.01	0.42
1:A:207:ARG:NE	3:A:545:HOH:O	2.50	0.41
1:A:182:ARG:HH11	1:A:182:ARG:HG2	1.84	0.41
1:A:182:ARG:HG2	1:A:182:ARG:NH1	2.37	0.40

There are no symmetry-related clashes.

5.3 Torsion angles [i](#)

5.3.1 Protein backbone [i](#)

In the following table, the Percentiles column shows the percent Ramachandran outliers of the chain as a percentile score with respect to all X-ray entries followed by that with respect to entries of similar resolution.

The Analysed column shows the number of residues for which the backbone conformation was analysed, and the total number of residues.

Mol	Chain	Analysed	Favoured	Allowed	Outliers	Percentiles	
1	A	279/269 (104%)	273 (98%)	6 (2%)	0	100	100

There are no Ramachandran outliers to report.

5.3.2 Protein sidechains [i](#)

In the following table, the Percentiles column shows the percent sidechain outliers of the chain as a percentile score with respect to all X-ray entries followed by that with respect to entries of similar resolution.

The Analysed column shows the number of residues for which the sidechain conformation was analysed, and the total number of residues.

Mol	Chain	Analysed	Rotameric	Outliers	Percentiles	
1	A	239/227 (105%)	222 (93%)	17 (7%)	12	4

All (17) residues with a non-rotameric sidechain are listed below:

Mol	Chain	Res	Type
1	A	7	HIS
1	A	8	LYS
1	A	45	ARG
1	A	54[A]	MET
1	A	54[B]	MET
1	A	59	PHE
1	A	90	ARG
1	A	117	ARG
1	A	143	ASN
1	A	191	ARG

Continued on next page...

Continued from previous page...

Mol	Chain	Res	Type
1	A	200	ILE
1	A	224	GLU
1	A	227	LEU
1	A	249	ASP
1	A	266	GLU
1	A	267	ARG
1	A	269	ASN

Sometimes sidechains can be flipped to improve hydrogen bonding and reduce clashes. All (7) such sidechains are listed below:

Mol	Chain	Res	Type
1	A	20	GLN
1	A	47	GLN
1	A	135	HIS
1	A	158	ASN
1	A	194	GLN
1	A	220	GLN
1	A	269	ASN

5.3.3 RNA ⓘ

There are no RNA molecules in this entry.

5.4 Non-standard residues in protein, DNA, RNA chains ⓘ

There are no non-standard protein/DNA/RNA residues in this entry.

5.5 Carbohydrates ⓘ

There are no oligosaccharides in this entry.

5.6 Ligand geometry ⓘ

1 ligand is modelled in this entry.

In the following table, the Counts columns list the number of bonds (or angles) for which Mogul statistics could be retrieved, the number of bonds (or angles) that are observed in the model and the number of bonds (or angles) that are defined in the Chemical Component Dictionary. The Link column lists molecule types, if any, to which the group is linked. The Z score for a bond

length (or angle) is the number of standard deviations the observed value is removed from the expected value. A bond length (or angle) with $|Z| > 2$ is considered an outlier worth inspection. RMSZ is the root-mean-square of all Z scores of the bond lengths (or angles).

Mol	Type	Chain	Res	Link	Bond lengths			Bond angles		
					Counts	RMSZ	$\# Z > 2$	Counts	RMSZ	$\# Z > 2$
2	PLP	A	301	1	15,15,16	1.27	2 (13%)	21,22,23	2.84	11 (52%)

In the following table, the Chirals column lists the number of chiral outliers, the number of chiral centers analysed, the number of these observed in the model and the number defined in the Chemical Component Dictionary. Similar counts are reported in the Torsion and Rings columns. '-' means no outliers of that kind were identified.

Mol	Type	Chain	Res	Link	Chirals	Torsions	Rings
2	PLP	A	301	1	-	1/6/6/8	0/1/1/1

All (2) bond length outliers are listed below:

Mol	Chain	Res	Type	Atoms	Z	Observed(Å)	Ideal(Å)
2	A	301	PLP	C2-N1	2.83	1.38	1.33
2	A	301	PLP	C3-C2	-2.40	1.38	1.41

All (11) bond angle outliers are listed below:

Mol	Chain	Res	Type	Atoms	Z	Observed(°)	Ideal(°)
2	A	301	PLP	C3-C2-N1	-5.36	114.20	120.96
2	A	301	PLP	C2A-C2-C3	5.02	126.67	120.80
2	A	301	PLP	C5-C6-N1	-4.40	116.66	123.83
2	A	301	PLP	C4A-C4-C5	4.04	125.10	120.94
2	A	301	PLP	O3P-P-O4P	3.95	116.96	106.67
2	A	301	PLP	C6-N1-C2	3.85	126.19	119.20
2	A	301	PLP	C6-C5-C4	3.74	121.16	118.10
2	A	301	PLP	O4P-P-O1P	-2.81	98.85	106.44
2	A	301	PLP	C4-C3-C2	2.69	123.91	119.89
2	A	301	PLP	C5A-C5-C6	-2.52	115.25	119.36
2	A	301	PLP	C4A-C4-C3	-2.28	116.72	120.52

There are no chirality outliers.

All (1) torsion outliers are listed below:

Mol	Chain	Res	Type	Atoms
2	A	301	PLP	C6-C5-C5A-O4P

There are no ring outliers.

No monomer is involved in short contacts.

5.7 Other polymers

There are no such residues in this entry.

5.8 Polymer linkage issues

There are no chain breaks in this entry.

6 Fit of model and data [i](#)

6.1 Protein, DNA and RNA chains [i](#)

In the following table, the column labelled ‘#RSRZ> 2’ contains the number (and percentage) of RSRZ outliers, followed by percent RSRZ outliers for the chain as percentile scores relative to all X-ray entries and entries of similar resolution. The OWAB column contains the minimum, median, 95th percentile and maximum values of the occupancy-weighted average B-factor per residue. The column labelled ‘Q< 0.9’ lists the number of (and percentage) of residues with an average occupancy less than 0.9.

Mol	Chain	Analysed	<RSRZ>	#RSRZ>2	OWAB(Å ²)	Q<0.9
1	A	269/269 (100%)	-0.39	6 (2%) 62 60	8, 17, 45, 131	12 (4%)

All (6) RSRZ outliers are listed below:

Mol	Chain	Res	Type	RSRZ
1	A	269	ASN	4.6
1	A	268	PRO	4.1
1	A	111	ALA	2.4
1	A	118	ASN	2.2
1	A	248	GLY	2.2
1	A	113	TYR	2.1

6.2 Non-standard residues in protein, DNA, RNA chains [i](#)

There are no non-standard protein/DNA/RNA residues in this entry.

6.3 Carbohydrates [i](#)

There are no monosaccharides in this entry.

6.4 Ligands [i](#)

In the following table, the Atoms column lists the number of modelled atoms in the group and the number defined in the chemical component dictionary. The B-factors column lists the minimum, median, 95th percentile and maximum values of B factors of atoms in the group. The column labelled ‘Q< 0.9’ lists the number of atoms with occupancy less than 0.9.

Mol	Type	Chain	Res	Atoms	RSCC	RSR	B-factors(Å ²)	Q<0.9
2	PLP	A	301	15/16	0.97	0.05	11,16,19,28	0

6.5 Other polymers ⓘ

There are no such residues in this entry.