



# Full wwPDB X-ray Structure Validation Report ⓘ

Apr 28, 2025 – 11:44 PM EDT

PDB ID : 4I6F / pdb\_00004i6f  
Title : Selective & Brain-Permeable Polo-like Kinase-2 (Plk-2) Inhibitors that Reduce  
-Synuclein Phosphorylation in Rat Brain  
Authors : Pan, H.  
Deposited on : 2012-11-29  
Resolution : 2.90 Å(reported)

This is a Full wwPDB X-ray Structure Validation Report for a publicly released PDB entry.

We welcome your comments at [validation@mail.wwpdb.org](mailto:validation@mail.wwpdb.org)

A user guide is available at

<https://www.wwpdb.org/validation/2017/XrayValidationReportHelp>

with specific help available everywhere you see the ⓘ symbol.

The types of validation reports are described at

<http://www.wwpdb.org/validation/2017/FAQs#types>.

---

The following versions of software and data (see [references ⓘ](#)) were used in the production of this report:

MolProbity : 4-5-2 with Phenix2.0rc1  
Mogul : 2022.3.0, CSD as543be (2022)  
Xtriage (Phenix) : 2.0rc1  
EDS : 3.0  
buster-report : 1.1.7 (2018)  
Percentile statistics : 20231227.v01 (using entries in the PDB archive December 27th 2023)  
CCP4 : 9.0.006 (Gargrove)  
Density-Fitness : 1.0.12  
Ideal geometry (proteins) : Engh & Huber (2001)  
Ideal geometry (DNA, RNA) : Parkinson et al. (1996)  
Validation Pipeline (wwPDB-VP) : 2.43.1

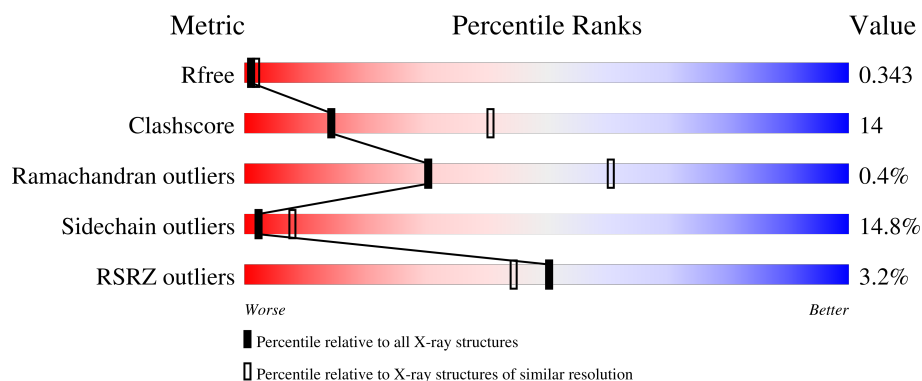
# 1 Overall quality at a glance

The following experimental techniques were used to determine the structure:

## *X-RAY DIFFRACTION*

The reported resolution of this entry is 2.90 Å.

Percentile scores (ranging between 0-100) for global validation metrics of the entry are shown in the following graphic. The table shows the number of entries on which the scores are based.



Metric	Whole archive (#Entries)	Similar resolution (#Entries, resolution range(Å))
$R_{free}$	164625	2335 (2.90-2.90)
Clashscore	180529	2564 (2.90-2.90)
Ramachandran outliers	177936	2514 (2.90-2.90)
Sidechain outliers	177891	2516 (2.90-2.90)
RSRZ outliers	164620	2337 (2.90-2.90)

The table below summarises the geometric issues observed across the polymeric chains and their fit to the electron density. The red, orange, yellow and green segments of the lower bar indicate the fraction of residues that contain outliers for  $\geq 3$ , 2, 1 and 0 types of geometric quality criteria respectively. A grey segment represents the fraction of residues that are not modelled. The numeric value for each fraction is indicated below the corresponding segment, with a dot representing fractions  $\leq 5\%$ . The upper red bar (where present) indicates the fraction of residues that have poor fit to the electron density. The numeric value is given above the bar.

Mol	Chain	Length	Quality of chain
1	A	308	

## 2 Entry composition

There are 3 unique types of molecules in this entry. The entry contains 2406 atoms, of which 0 are hydrogens and 0 are deuteriums.

In the tables below, the ZeroOcc column contains the number of atoms modelled with zero occupancy, the AltConf column contains the number of residues with at least one atom in alternate conformation and the Trace column contains the number of residues modelled with at most 2 atoms.

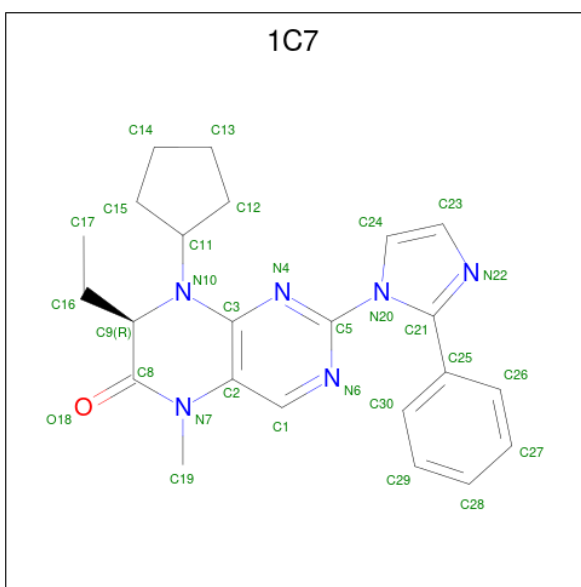
- Molecule 1 is a protein called Serine/threonine-protein kinase PLK2.

Mol	Chain	Residues	Atoms					ZeroOcc	AltConf	Trace
1	A	285	Total	C	N	O	S	0	1	0
			2340	1487	424	416	13			

There are 11 discrepancies between the modelled and reference sequences:

Chain	Residue	Modelled	Actual	Comment	Reference
A	53	MET	-	initiating methionine	UNP Q9NYY3
A	54	MET	-	expression tag	UNP Q9NYY3
A	55	HIS	-	expression tag	UNP Q9NYY3
A	56	HIS	-	expression tag	UNP Q9NYY3
A	83	SER	CYS	engineered mutation	UNP Q9NYY3
A	87	THR	VAL	engineered mutation	UNP Q9NYY3
A	119	SER	ALA	engineered mutation	UNP Q9NYY3
A	216	SER	ALA	engineered mutation	UNP Q9NYY3
A	259	ALA	CYS	engineered mutation	UNP Q9NYY3
A	291	SER	CYS	engineered mutation	UNP Q9NYY3
A	335	THR	LEU	engineered mutation	UNP Q9NYY3

- Molecule 2 is (7R)-8-cyclopentyl-7-ethyl-5-methyl-2-(2-phenyl-1H-imidazol-1-yl)-7,8-dihydropteridin-6(5H)-one (CCD ID: 1C7) (formula: C<sub>23</sub>H<sub>26</sub>N<sub>6</sub>O).



Mol	Chain	Residues	Atoms				ZeroOcc	AltConf
2	A	1	Total	C	N	O	0	0
			30	23	6	1		

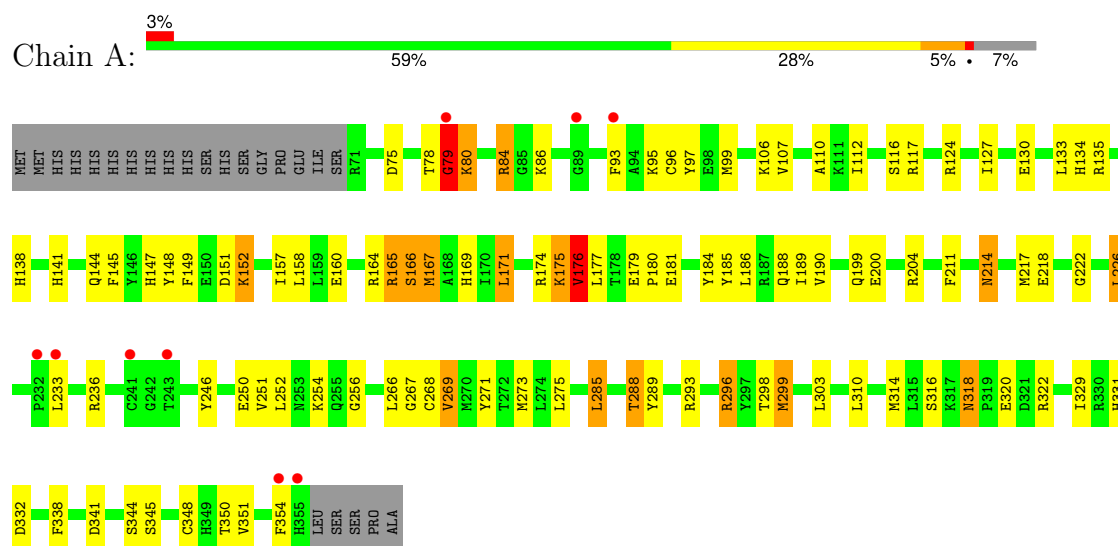
- Molecule 3 is water.

Mol	Chain	Residues	Atoms		ZeroOcc	AltConf
3	A	36	Total	O	0	0
			36	36		

### 3 Residue-property plots

These plots are drawn for all protein, RNA, DNA and oligosaccharide chains in the entry. The first graphic for a chain summarises the proportions of the various outlier classes displayed in the second graphic. The second graphic shows the sequence view annotated by issues in geometry and electron density. Residues are color-coded according to the number of geometric quality criteria for which they contain at least one outlier: green = 0, yellow = 1, orange = 2 and red = 3 or more. A red dot above a residue indicates a poor fit to the electron density ( $RSRZ > 2$ ). Stretches of 2 or more consecutive residues without any outlier are shown as a green connector. Residues present in the sample, but not in the model, are shown in grey.

- Molecule 1: Serine/threonine-protein kinase PLK2



## 4 Data and refinement statistics

Property	Value	Source
Space group	C 1 2 1	Depositor
Cell constants a, b, c, $\alpha$ , $\beta$ , $\gamma$	103.82Å 60.12Å 53.12Å 90.00° 107.14° 90.00°	Depositor
Resolution (Å)	33.65 – 2.90 33.65 – 2.90	Depositor EDS
% Data completeness (in resolution range)	99.9 (33.65-2.90) 99.9 (33.65-2.90)	Depositor EDS
$R_{merge}$	(Not available)	Depositor
$R_{sym}$	(Not available)	Depositor
$\langle I/\sigma(I) \rangle$ <sup>1</sup>	2.48 (at 2.90Å)	Xtriage
Refinement program	REFMAC 5.5.0102	Depositor
R, $R_{free}$	0.235 , 0.321 0.225 , 0.343	Depositor DCC
$R_{free}$ test set	334 reflections (4.73%)	wwPDB-VP
Wilson B-factor (Å <sup>2</sup> )	31.6	Xtriage
Anisotropy	0.118	Xtriage
Bulk solvent $k_{sol}$ (e/Å <sup>3</sup> ), $B_{sol}$ (Å <sup>2</sup> )	0.34 , 38.3	EDS
L-test for twinning <sup>2</sup>	$\langle  L  \rangle = 0.53$ , $\langle L^2 \rangle = 0.36$	Xtriage
Estimated twinning fraction	No twinning to report.	Xtriage
$F_o, F_c$ correlation	0.91	EDS
Total number of atoms	2406	wwPDB-VP
Average B, all atoms (Å <sup>2</sup> )	29.0	wwPDB-VP

Xtriage's analysis on translational NCS is as follows: *The largest off-origin peak in the Patterson function is 10.00% of the height of the origin peak. No significant pseudotranslation is detected.*

<sup>1</sup>Intensities estimated from amplitudes.

<sup>2</sup>Theoretical values of  $\langle |L| \rangle$ ,  $\langle L^2 \rangle$  for acentric reflections are 0.5, 0.333 respectively for untwinned datasets, and 0.375, 0.2 for perfectly twinned datasets.

## 5 Model quality

### 5.1 Standard geometry

Bond lengths and bond angles in the following residue types are not validated in this section: 1C7

The Z score for a bond length (or angle) is the number of standard deviations the observed value is removed from the expected value. A bond length (or angle) with  $|Z| > 5$  is considered an outlier worth inspection. RMSZ is the root-mean-square of all Z scores of the bond lengths (or angles).

Mol	Chain	Bond lengths		Bond angles	
		RMSZ	$\# Z  > 5$	RMSZ	$\# Z  > 5$
1	A	1.03	4/2401 (0.2%)	1.14	6/3238 (0.2%)

Chiral center outliers are detected by calculating the chiral volume of a chiral center and verifying if the center is modelled as a planar moiety or with the opposite hand. A planarity outlier is detected by checking planarity of atoms in a peptide group, atoms in a mainchain group or atoms of a sidechain that are expected to be planar.

Mol	Chain	#Chirality outliers	#Planarity outliers
1	A	0	1

All (4) bond length outliers are listed below:

Mol	Chain	Res	Type	Atoms	Z	Observed(Å)	Ideal(Å)
1	A	176	VAL	C-O	-6.97	1.15	1.23
1	A	165	ARG	C-O	-6.47	1.18	1.24
1	A	166	SER	C-O	-5.33	1.17	1.23
1	A	222	GLY	C-O	-5.13	1.17	1.23

All (6) bond angle outliers are listed below:

Mol	Chain	Res	Type	Atoms	Z	Observed(°)	Ideal(°)
1	A	165	ARG	N-CA-C	6.38	119.33	108.67
1	A	318	ASN	CA-C-N	5.37	125.01	119.05
1	A	318	ASN	C-N-CA	5.37	125.01	119.05
1	A	80	LYS	N-CA-C	-5.33	96.06	111.00
1	A	341	ASP	N-CA-C	-5.23	105.26	111.69
1	A	354	PHE	N-CA-C	5.09	117.41	110.24

There are no chirality outliers.

All (1) planarity outliers are listed below:

Mol	Chain	Res	Type	Group
1	A	79	GLY	Peptide

## 5.2 Too-close contacts ⓘ

In the following table, the Non-H and H(model) columns list the number of non-hydrogen atoms and hydrogen atoms in the chain respectively. The H(added) column lists the number of hydrogen atoms added and optimized by MolProbity. The Clashes column lists the number of clashes within the asymmetric unit, whereas Symm-Clashes lists symmetry-related clashes.

Mol	Chain	Non-H	H(model)	H(added)	Clashes	Symm-Clashes
1	A	2340	0	2349	64	0
2	A	30	0	26	4	0
3	A	36	0	0	2	0
All	All	2406	0	2375	66	0

The all-atom clashscore is defined as the number of clashes found per 1000 atoms (including hydrogen atoms). The all-atom clashscore for this structure is 14.

All (66) close contacts within the same asymmetric unit are listed below, sorted by their clash magnitude.

Atom-1	Atom-2	Interatomic distance (Å)	Clash overlap (Å)
1:A:164:ARG:HD3	1:A:217:MET:HE2	1.21	1.20
1:A:217:MET:HE1	1:A:348:CYS:SG	1.87	1.14
1:A:84:ARG:HH11	1:A:84:ARG:HG2	1.13	1.14
1:A:164:ARG:HD3	1:A:217:MET:CE	1.93	0.97
1:A:84:ARG:HG2	1:A:84:ARG:NH1	1.82	0.81
1:A:138[A]:HIS:HE1	3:A:505:HOH:O	1.64	0.80
1:A:164:ARG:CD	1:A:217:MET:HE2	2.07	0.80
1:A:217:MET:CE	1:A:348:CYS:SG	2.70	0.78
1:A:78:THR:O	1:A:79:GLY:C	2.29	0.72
1:A:84:ARG:HH11	1:A:84:ARG:CG	1.98	0.69
1:A:164:ARG:HD2	1:A:214:ASN:O	1.92	0.69
1:A:93:PHE:HA	1:A:117:ARG:HH21	1.57	0.69
1:A:214:ASN:HD21	1:A:218:GLU:H	1.42	0.67
1:A:75:ASP:O	1:A:78:THR:O	2.13	0.67
2:A:401:1C7:N4	2:A:401:1C7:C26	2.58	0.66
1:A:214:ASN:ND2	1:A:218:GLU:H	1.94	0.65
1:A:141:HIS:CE1	1:A:188:GLN:HE21	2.14	0.65
1:A:96:CYS:SG	2:A:401:1C7:H18	2.39	0.62
1:A:299:MET:HA	1:A:299:MET:HE2	1.81	0.62
1:A:99:MET:HE3	1:A:110:ALA:CB	2.30	0.61

*Continued on next page...*

*Continued from previous page...*

Atom-1	Atom-2	Interatomic distance (Å)	Clash overlap (Å)
1:A:285:LEU:O	1:A:288:THR:HG22	2.01	0.60
2:A:401:1C7:N4	2:A:401:1C7:C25	2.62	0.57
1:A:99:MET:HE3	1:A:110:ALA:HB3	1.87	0.56
1:A:316:SER:HB2	1:A:322:ARG:HG3	1.86	0.56
1:A:246:TYR:CE2	1:A:269:VAL:HG23	2.43	0.54
1:A:185:TYR:O	1:A:189:ILE:HG13	2.09	0.53
1:A:217:MET:HE3	1:A:345:SER:HA	1.91	0.53
1:A:138[B]:HIS:HA	1:A:144:GLN:HE22	1.75	0.52
1:A:171:LEU:CD1	1:A:177:LEU:HG	2.40	0.52
1:A:167:MET:HG3	1:A:211:PHE:HB2	1.92	0.51
1:A:97:TYR:CD1	1:A:112:ILE:HD12	2.46	0.51
1:A:110:ALA:HA	1:A:157:ILE:O	2.10	0.51
1:A:171:LEU:O	1:A:175:LYS:N	2.40	0.50
1:A:160:GLU:O	2:A:401:1C7:H19	2.12	0.50
1:A:138[A]:HIS:HA	1:A:144:GLN:HE22	1.77	0.50
1:A:214:ASN:C	1:A:214:ASN:HD22	2.19	0.50
1:A:166:SER:OG	1:A:169:HIS:HD2	1.95	0.49
1:A:275:LEU:HD11	1:A:303:LEU:HD11	1.93	0.49
1:A:78:THR:O	1:A:79:GLY:O	2.30	0.49
1:A:267:GLY:HA2	1:A:314:MET:HE3	1.95	0.49
1:A:204:ARG:HB2	1:A:226:LEU:O	2.13	0.48
1:A:190:VAL:HG11	1:A:329:ILE:HG23	1.93	0.48
1:A:138[A]:HIS:CE1	3:A:505:HOH:O	2.49	0.47
1:A:296:ARG:HH11	1:A:296:ARG:HB3	1.79	0.47
1:A:167:MET:SD	1:A:273:MET:HE2	2.55	0.47
1:A:186:LEU:O	1:A:190:VAL:HG23	2.17	0.45
1:A:236:ARG:HD2	1:A:256:GLY:HA3	1.99	0.45
1:A:164:ARG:NH2	1:A:345:SER:HB2	2.32	0.45
1:A:179:GLU:O	1:A:180:PRO:C	2.60	0.44
1:A:174:ARG:NH1	1:A:181:GLU:OE2	2.42	0.44
1:A:176:VAL:O	1:A:176:VAL:HG12	2.15	0.43
1:A:250:GLU:HG2	1:A:251:VAL:N	2.33	0.43
1:A:252:LEU:HD23	1:A:252:LEU:HA	1.84	0.43
1:A:135:ARG:HA	1:A:145:PHE:CD2	2.53	0.43
1:A:268:CYS:O	1:A:271:TYR:HB3	2.18	0.43
1:A:166:SER:OG	1:A:169:HIS:CD2	2.72	0.43
1:A:164:ARG:CZ	1:A:345:SER:HB2	2.49	0.42
1:A:184:TYR:O	1:A:188:GLN:HG3	2.20	0.42
1:A:130:GLU:O	1:A:134:HIS:HB2	2.20	0.42
1:A:147:HIS:CD2	1:A:149:PHE:HD2	2.38	0.41
1:A:310:LEU:HD13	1:A:331:HIS:CD2	2.55	0.41

*Continued on next page...*

Continued from previous page...

Atom-1	Atom-2	Interatomic distance (Å)	Clash overlap (Å)
1:A:250:GLU:HG2	1:A:251:VAL:H	1.86	0.41
1:A:151:ASP:O	1:A:152:LYS:C	2.63	0.41
1:A:289:TYR:HB3	1:A:293:ARG:NH1	2.35	0.41
1:A:99:MET:HE3	1:A:99:MET:HB2	1.91	0.40
1:A:134:HIS:O	1:A:134:HIS:HD2	2.04	0.40

There are no symmetry-related clashes.

## 5.3 Torsion angles [i](#)

### 5.3.1 Protein backbone [i](#)

In the following table, the Percentiles column shows the percent Ramachandran outliers of the chain as a percentile score with respect to all X-ray entries followed by that with respect to entries of similar resolution.

The Analysed column shows the number of residues for which the backbone conformation was analysed, and the total number of residues.

Mol	Chain	Analysed	Favoured	Allowed	Outliers	Percentiles
1	A	284/308 (92%)	259 (91%)	24 (8%)	1 (0%)	30 60

All (1) Ramachandran outliers are listed below:

Mol	Chain	Res	Type
1	A	79	GLY

### 5.3.2 Protein sidechains [i](#)

In the following table, the Percentiles column shows the percent sidechain outliers of the chain as a percentile score with respect to all X-ray entries followed by that with respect to entries of similar resolution.

The Analysed column shows the number of residues for which the sidechain conformation was analysed, and the total number of residues.

Mol	Chain	Analysed	Rotameric	Outliers	Percentiles
1	A	258/278 (93%)	220 (85%)	38 (15%)	2 8

All (38) residues with a non-rotameric sidechain are listed below:

Mol	Chain	Res	Type
1	A	80	LYS
1	A	84	ARG
1	A	86	LYS
1	A	95	LYS
1	A	106	LYS
1	A	107	VAL
1	A	116	SER
1	A	124	ARG
1	A	127	ILE
1	A	133	LEU
1	A	148	TYR
1	A	152	LYS
1	A	158	LEU
1	A	165	ARG
1	A	167	MET
1	A	171	LEU
1	A	175	LYS
1	A	176	VAL
1	A	199	GLN
1	A	200	GLU
1	A	214	ASN
1	A	226	LEU
1	A	233	LEU
1	A	254	LYS
1	A	266	LEU
1	A	269	VAL
1	A	285	LEU
1	A	288	THR
1	A	296	ARG
1	A	298	THR
1	A	299	MET
1	A	318	ASN
1	A	320	GLU
1	A	332	ASP
1	A	338	PHE
1	A	344	SER
1	A	350	THR
1	A	351	VAL

Sometimes sidechains can be flipped to improve hydrogen bonding and reduce clashes. All (7) such sidechains are listed below:

Mol	Chain	Res	Type
1	A	144	GLN

*Continued on next page...*

*Continued from previous page...*

Mol	Chain	Res	Type
1	A	169	HIS
1	A	188	GLN
1	A	199	GLN
1	A	210	ASN
1	A	214	ASN
1	A	349	HIS

### 5.3.3 RNA [i](#)

There are no RNA molecules in this entry.

## 5.4 Non-standard residues in protein, DNA, RNA chains [i](#)

There are no non-standard protein/DNA/RNA residues in this entry.

## 5.5 Carbohydrates [i](#)

There are no oligosaccharides in this entry.

## 5.6 Ligand geometry [i](#)

1 ligand is modelled in this entry.

In the following table, the Counts columns list the number of bonds (or angles) for which Mogul statistics could be retrieved, the number of bonds (or angles) that are observed in the model and the number of bonds (or angles) that are defined in the Chemical Component Dictionary. The Link column lists molecule types, if any, to which the group is linked. The Z score for a bond length (or angle) is the number of standard deviations the observed value is removed from the expected value. A bond length (or angle) with  $|Z| > 2$  is considered an outlier worth inspection. RMSZ is the root-mean-square of all Z scores of the bond lengths (or angles).

Mol	Type	Chain	Res	Link	Bond lengths			Bond angles		
					Counts	RMSZ	$\# Z  > 2$	Counts	RMSZ	$\# Z  > 2$
2	1C7	A	401	-	31,34,34	2.73	9 (29%)	35,49,49	2.33	11 (31%)

In the following table, the Chirals column lists the number of chiral outliers, the number of chiral centers analysed, the number of these observed in the model and the number defined in the Chemical Component Dictionary. Similar counts are reported in the Torsion and Rings columns. '-' means no outliers of that kind were identified.

Mol	Type	Chain	Res	Link	Chirals	Torsions	Rings
2	1C7	A	401	-	-	2/12/41/41	0/5/5/5

All (9) bond length outliers are listed below:

Mol	Chain	Res	Type	Atoms	Z	Observed(Å)	Ideal(Å)
2	A	401	1C7	C24-N20	-11.91	1.27	1.38
2	A	401	1C7	C9-C8	-3.85	1.44	1.51
2	A	401	1C7	C1-C2	-3.39	1.34	1.39
2	A	401	1C7	C2-C3	2.54	1.44	1.41
2	A	401	1C7	C1-N6	-2.43	1.29	1.34
2	A	401	1C7	C5-N20	-2.24	1.29	1.43
2	A	401	1C7	C30-C25	-2.23	1.35	1.39
2	A	401	1C7	C19-N7	-2.13	1.43	1.46
2	A	401	1C7	C29-C30	-2.00	1.35	1.38

All (11) bond angle outliers are listed below:

Mol	Chain	Res	Type	Atoms	Z	Observed(°)	Ideal(°)
2	A	401	1C7	C1-N6-C5	5.54	120.64	115.65
2	A	401	1C7	C9-C8-N7	4.79	123.96	116.28
2	A	401	1C7	C2-C3-N4	-4.41	116.33	123.32
2	A	401	1C7	C16-C9-C8	-4.38	100.81	111.20
2	A	401	1C7	N6-C5-N20	3.86	120.15	115.13
2	A	401	1C7	N22-C21-N20	-3.70	102.52	114.71
2	A	401	1C7	C23-N22-C21	3.09	111.47	104.04
2	A	401	1C7	O18-C8-N7	-2.89	119.53	122.35
2	A	401	1C7	C5-N4-C3	2.54	120.18	114.91
2	A	401	1C7	N6-C5-N4	-2.19	123.73	126.18
2	A	401	1C7	C19-N7-C8	2.05	119.64	117.69

There are no chirality outliers.

All (2) torsion outliers are listed below:

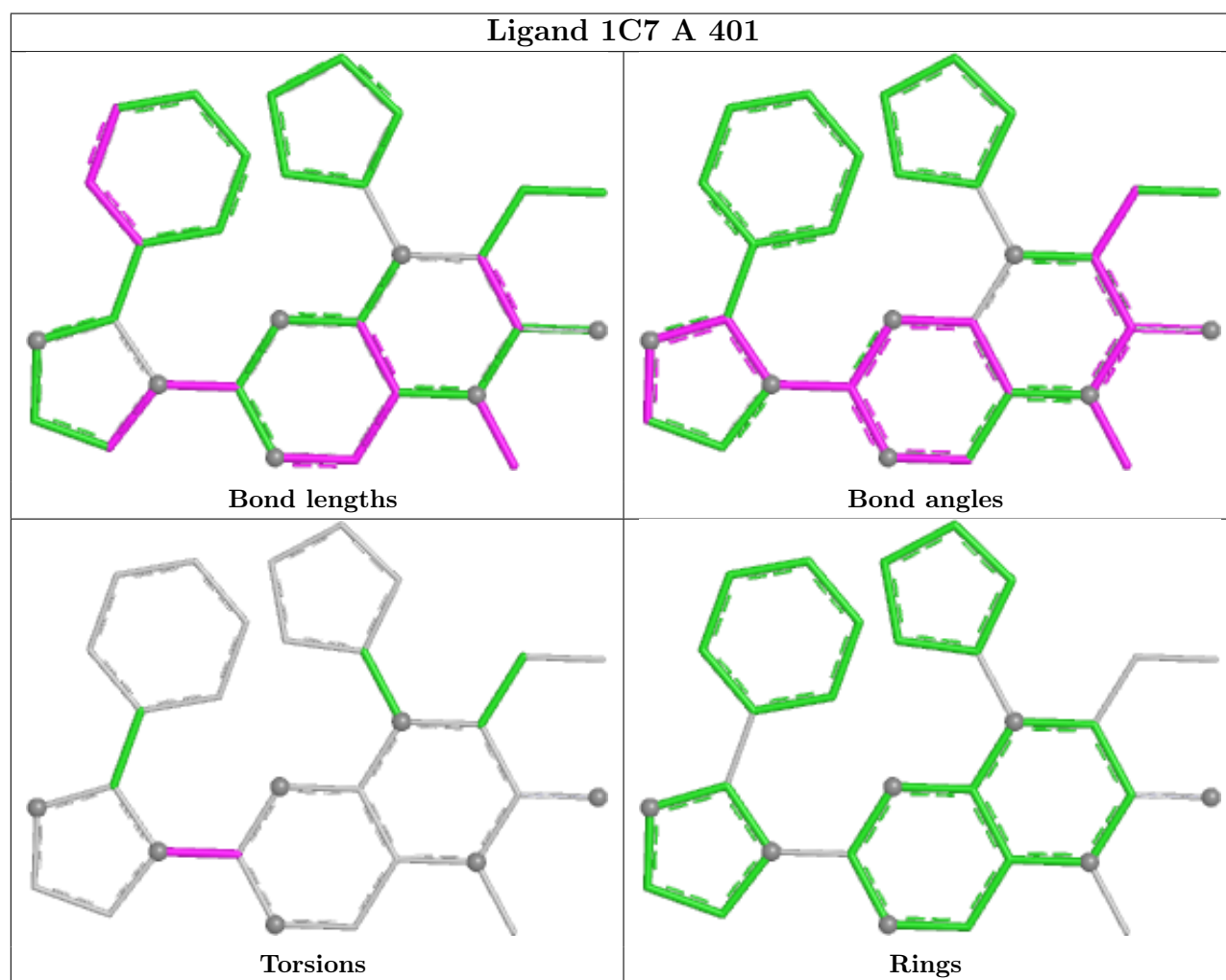
Mol	Chain	Res	Type	Atoms
2	A	401	1C7	N4-C5-N20-C24
2	A	401	1C7	N6-C5-N20-C24

There are no ring outliers.

1 monomer is involved in 4 short contacts:

Mol	Chain	Res	Type	Clashes	Symm-Clashes
2	A	401	1C7	4	0

The following is a two-dimensional graphical depiction of Mogul quality analysis of bond lengths, bond angles, torsion angles, and ring geometry for all instances of the Ligand of Interest. In addition, ligands with molecular weight > 250 and outliers as shown on the validation Tables will also be included. For torsion angles, if less than 5% of the Mogul distribution of torsion angles is within 10 degrees of the torsion angle in question, then that torsion angle is considered an outlier. Any bond that is central to one or more torsion angles identified as an outlier by Mogul will be highlighted in the graph. For rings, the root-mean-square deviation (RMSD) between the ring in question and similar rings identified by Mogul is calculated over all ring torsion angles. If the average RMSD is greater than 60 degrees and the minimal RMSD between the ring in question and any Mogul-identified rings is also greater than 60 degrees, then that ring is considered an outlier. The outliers are highlighted in purple. The color gray indicates Mogul did not find sufficient equivalents in the CSD to analyse the geometry.



## 5.7 Other polymers ⓘ

There are no such residues in this entry.

## 5.8 Polymer linkage issues ⓘ

There are no chain breaks in this entry.

## 6 Fit of model and data [i](#)

### 6.1 Protein, DNA and RNA chains [i](#)

In the following table, the column labelled ‘#RSRZ> 2’ contains the number (and percentage) of RSRZ outliers, followed by percent RSRZ outliers for the chain as percentile scores relative to all X-ray entries and entries of similar resolution. The OWAB column contains the minimum, median, 95<sup>th</sup> percentile and maximum values of the occupancy-weighted average B-factor per residue. The column labelled ‘Q< 0.9’ lists the number of (and percentage) of residues with an average occupancy less than 0.9.

Mol	Chain	Analysed	<RSRZ>	#RSRZ>2		OWAB(Å <sup>2</sup> )	Q<0.9
1	A	285/308 (92%)	0.37	9 (3%)	50 44	15, 27, 51, 65	1 (0%)

All (9) RSRZ outliers are listed below:

Mol	Chain	Res	Type	RSRZ
1	A	93	PHE	5.2
1	A	355	HIS	3.3
1	A	233	LEU	2.8
1	A	241	CYS	2.6
1	A	243	THR	2.5
1	A	232	PRO	2.5
1	A	89	GLY	2.2
1	A	79	GLY	2.2
1	A	354	PHE	2.0

### 6.2 Non-standard residues in protein, DNA, RNA chains [i](#)

There are no non-standard protein/DNA/RNA residues in this entry.

### 6.3 Carbohydrates [i](#)

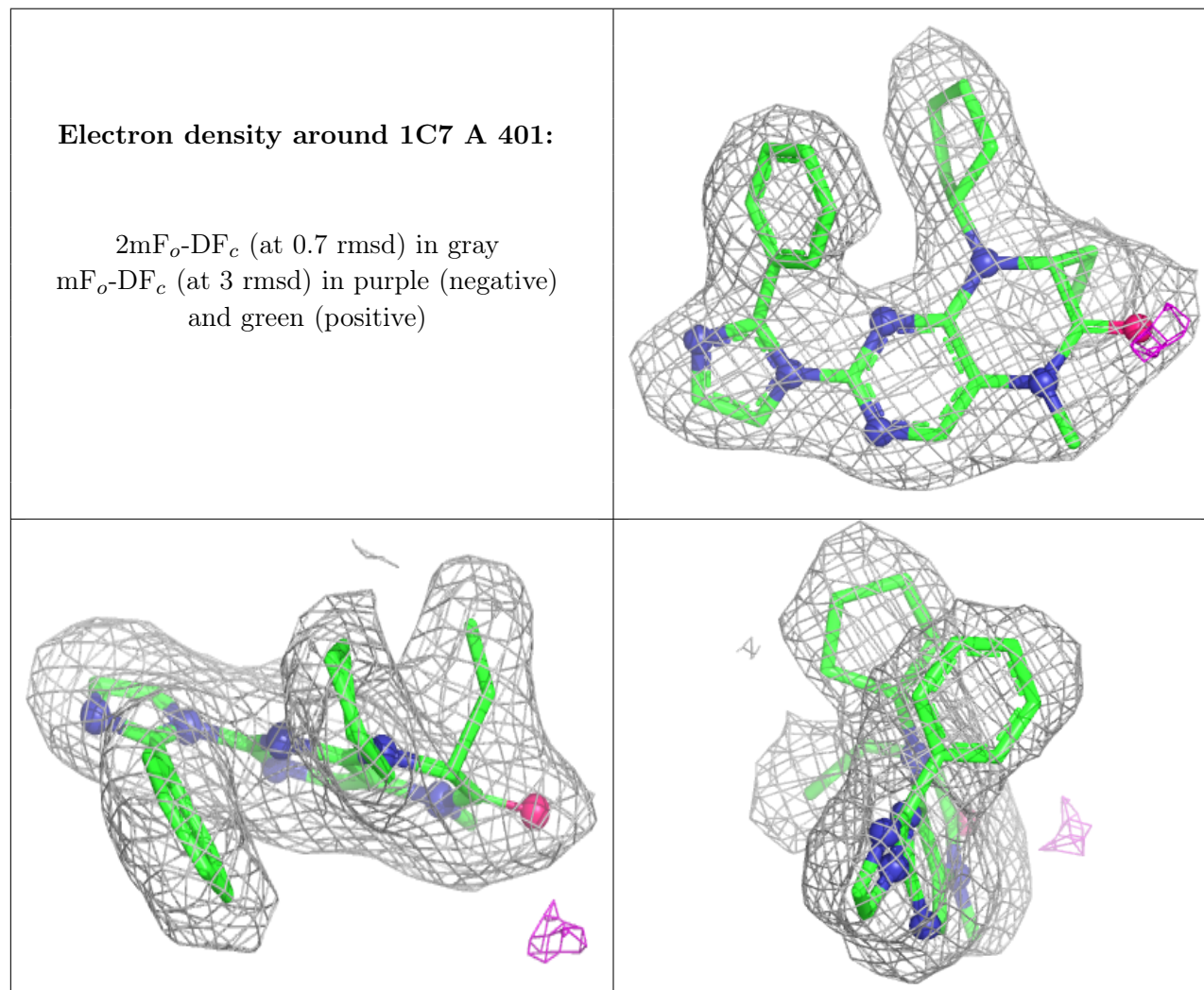
There are no monosaccharides in this entry.

### 6.4 Ligands [i](#)

In the following table, the Atoms column lists the number of modelled atoms in the group and the number defined in the chemical component dictionary. The B-factors column lists the minimum, median, 95<sup>th</sup> percentile and maximum values of B factors of atoms in the group. The column labelled ‘Q< 0.9’ lists the number of atoms with occupancy less than 0.9.

Mol	Type	Chain	Res	Atoms	RSCC	RSR	B-factors( $\text{\AA}^2$ )	Q<0.9
2	1C7	A	401	30/30	0.93	0.09	11,15,17,20	0

The following is a graphical depiction of the model fit to experimental electron density of all instances of the Ligand of Interest. In addition, ligands with molecular weight > 250 and outliers as shown on the geometry validation Tables will also be included. Each fit is shown from different orientation to approximate a three-dimensional view.



## 6.5 Other polymers [i](#)

There are no such residues in this entry.