



Full wwPDB X-ray Structure Validation Report ⓘ

Jun 22, 2024 – 04:11 PM EDT

PDB ID : 6KBH
Title : Crystal structure of an intact type IV self-sufficient cytochrome P450 monooxygenase
Authors : Gong, R.; Wu, L.J.; Zhang, Y.; Liu, Z.; Dou, S.; Zhang, R.G.; Xu, J.H.; Tang, C.; Zhou, J.H.
Deposited on : 2019-06-25
Resolution : 2.60 Å(reported)

This is a Full wwPDB X-ray Structure Validation Report for a publicly released PDB entry.

We welcome your comments at validation@mail.wwpdb.org

A user guide is available at

<https://www.wwpdb.org/validation/2017/XrayValidationReportHelp>

with specific help available everywhere you see the ⓘ symbol.

The types of validation reports are described at

<http://www.wwpdb.org/validation/2017/FAQs#types>.

The following versions of software and data (see [references ⓘ](#)) were used in the production of this report:

MolProbity	:	4.02b-467
Mogul	:	2022.3.0, CSD as543be (2022)
Xtriage (Phenix)	:	1.20.1
EDS	:	2.37.1
buster-report	:	1.1.7 (2018)
Percentile statistics	:	20191225.v01 (using entries in the PDB archive December 25th 2019)
Refmac	:	5.8.0158
CCP4	:	7.0.044 (Gargrove)
Ideal geometry (proteins)	:	Engh & Huber (2001)
Ideal geometry (DNA, RNA)	:	Parkinson et al. (1996)
Validation Pipeline (wwPDB-VP)	:	2.37.1

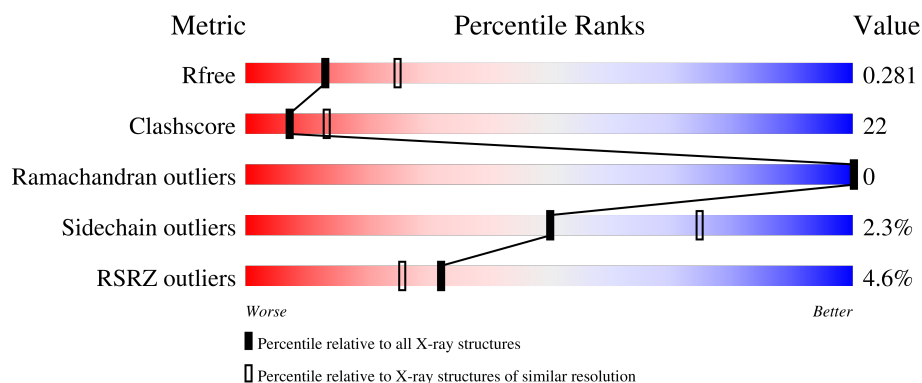
1 Overall quality at a glance

The following experimental techniques were used to determine the structure:

X-RAY DIFFRACTION

The reported resolution of this entry is 2.60 Å.

Percentile scores (ranging between 0-100) for global validation metrics of the entry are shown in the following graphic. The table shows the number of entries on which the scores are based.



Metric	Whole archive (#Entries)	Similar resolution (#Entries, resolution range(Å))
R_{free}	130704	3163 (2.60-2.60)
Clashscore	141614	3518 (2.60-2.60)
Ramachandran outliers	138981	3455 (2.60-2.60)
Sidechain outliers	138945	3455 (2.60-2.60)
RSRZ outliers	127900	3104 (2.60-2.60)

The table below summarises the geometric issues observed across the polymeric chains and their fit to the electron density. The red, orange, yellow and green segments of the lower bar indicate the fraction of residues that contain outliers for ≥ 3 , 2, 1 and 0 types of geometric quality criteria respectively. A grey segment represents the fraction of residues that are not modelled. The numeric value for each fraction is indicated below the corresponding segment, with a dot representing fractions $\leq 5\%$. The upper red bar (where present) indicates the fraction of residues that have poor fit to the electron density. The numeric value is given above the bar.

Mol	Chain	Length	Quality of chain
1	A	786	

2 Entry composition [i](#)

There are 5 unique types of molecules in this entry. The entry contains 6059 atoms, of which 0 are hydrogens and 0 are deuteriums.

In the tables below, the ZeroOcc column contains the number of atoms modelled with zero occupancy, the AltConf column contains the number of residues with at least one atom in alternate conformation and the Trace column contains the number of residues modelled with at most 2 atoms.

- Molecule 1 is a protein called Cytochrome P450 monooxygenase.

Mol	Chain	Residues	Atoms					ZeroOcc	AltConf	Trace
1	A	765	Total	C	N	O	S	0	0	0
			5975	3733	1067	1142	33			

- Molecule 2 is FLAVIN MONONUCLEOTIDE (three-letter code: FMN) (formula: C₁₇H₂₁N₄O₉P).



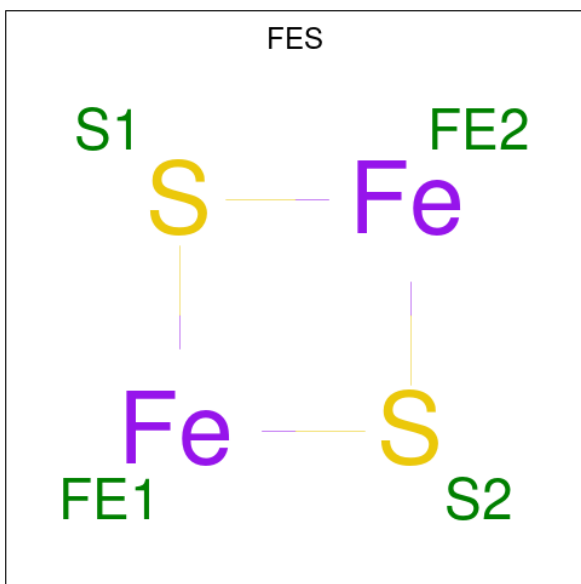
Mol	Chain	Residues	Atoms					ZeroOcc	AltConf
2	A	1	Total	C	N	O	P	0	0
			31	17	4	9	1		

- Molecule 3 is PROTOPORPHYRIN IX CONTAINING FE (three-letter code: HEM) (formula: C₃₄H₃₂FeN₄O₄) (labeled as "Ligand of Interest" by depositor).



Mol	Chain	Residues	Atoms				ZeroOcc	AltConf
3	A	1	Total	C	Fe	N	O	
			43	34	1	4	4	
								0
								0

- Molecule 4 is FE2/S2 (INORGANIC) CLUSTER (three-letter code: FES) (formula: Fe_2S_2) (labeled as "Ligand of Interest" by depositor).



Mol	Chain	Residues	Atoms			ZeroOcc	AltConf
4	A	1	Total	Fe	S		
			4	2	2		
						0	
							0

- Molecule 5 is water.

Mol	Chain	Residues	Atoms		ZeroOcc	AltConf
5	A	6	Total	O	0	0
			6	6		

3 Residue-property plots

These plots are drawn for all protein, RNA, DNA and oligosaccharide chains in the entry. The first graphic for a chain summarises the proportions of the various outlier classes displayed in the second graphic. The second graphic shows the sequence view annotated by issues in geometry and electron density. Residues are color-coded according to the number of geometric quality criteria for which they contain at least one outlier: green = 0, yellow = 1, orange = 2 and red = 3 or more. A red dot above a residue indicates a poor fit to the electron density ($RSRZ > 2$). Stretches of 2 or more consecutive residues without any outlier are shown as a green connector. Residues present in the sample, but not in the model, are shown in grey.

- Molecule 1: Cytochrome P450 monooxygenase



4 Data and refinement statistics

Property	Value	Source
Space group	C 1 2 1	Depositor
Cell constants a, b, c, α , β , γ	131.76Å 55.48Å 135.96Å 90.00° 98.12° 90.00°	Depositor
Resolution (Å)	46.89 – 2.60 48.64 – 2.60	Depositor EDS
% Data completeness (in resolution range)	99.1 (46.89-2.60) 99.3 (48.64-2.60)	Depositor EDS
R_{merge}	0.05	Depositor
R_{sym}	(Not available)	Depositor
$\langle I/\sigma(I) \rangle$ ¹	1.81 (at 2.61Å)	Xtriage
Refinement program	PHENIX 1.11.1 _2575	Depositor
R, R_{free}	0.236 , 0.277 0.239 , 0.281	Depositor DCC
R_{free} test set	1497 reflections (4.96%)	wwPDB-VP
Wilson B-factor (Å ²)	75.8	Xtriage
Anisotropy	0.210	Xtriage
Bulk solvent k_{sol} (e/Å ³), B_{sol} (Å ²)	0.30 , 60.7	EDS
L-test for twinning ²	$\langle L \rangle = 0.49$, $\langle L^2 \rangle = 0.32$	Xtriage
Estimated twinning fraction	No twinning to report.	Xtriage
F_o, F_c correlation	0.95	EDS
Total number of atoms	6059	wwPDB-VP
Average B, all atoms (Å ²)	96.0	wwPDB-VP

Xtriage's analysis on translational NCS is as follows: *The largest off-origin peak in the Patterson function is 4.68% of the height of the origin peak. No significant pseudotranslation is detected.*

¹Intensities estimated from amplitudes.

²Theoretical values of $\langle |L| \rangle$, $\langle L^2 \rangle$ for acentric reflections are 0.5, 0.333 respectively for untwinned datasets, and 0.375, 0.2 for perfectly twinned datasets.

5 Model quality [i](#)

5.1 Standard geometry [i](#)

Bond lengths and bond angles in the following residue types are not validated in this section: FMN, HEM, FES

The Z score for a bond length (or angle) is the number of standard deviations the observed value is removed from the expected value. A bond length (or angle) with $|Z| > 5$ is considered an outlier worth inspection. RMSZ is the root-mean-square of all Z scores of the bond lengths (or angles).

Mol	Chain	Bond lengths		Bond angles	
		RMSZ	$\# Z > 5$	RMSZ	$\# Z > 5$
1	A	0.36	0/6121	0.61	5/8334 (0.1%)

Chiral center outliers are detected by calculating the chiral volume of a chiral center and verifying if the center is modelled as a planar moiety or with the opposite hand. A planarity outlier is detected by checking planarity of atoms in a peptide group, atoms in a mainchain group or atoms of a sidechain that are expected to be planar.

Mol	Chain	#Chirality outliers	#Planarity outliers
1	A	0	1

There are no bond length outliers.

All (5) bond angle outliers are listed below:

Mol	Chain	Res	Type	Atoms	Z	Observed(°)	Ideal(°)
1	A	370	LEU	CB-CG-CD2	-7.08	98.96	111.00
1	A	692	GLU	N-CA-C	-7.05	91.98	111.00
1	A	690	LEU	CA-CB-CG	6.74	130.79	115.30
1	A	602	GLY	N-CA-C	-5.60	99.09	113.10
1	A	125	LEU	CA-CB-CG	5.03	126.87	115.30

There are no chirality outliers.

All (1) planarity outliers are listed below:

Mol	Chain	Res	Type	Group
1	A	777	ALA	Peptide

5.2 Too-close contacts ⓘ

In the following table, the Non-H and H(model) columns list the number of non-hydrogen atoms and hydrogen atoms in the chain respectively. The H(added) column lists the number of hydrogen atoms added and optimized by MolProbity. The Clashes column lists the number of clashes within the asymmetric unit, whereas Symm-Clashes lists symmetry-related clashes.

Mol	Chain	Non-H	H(model)	H(added)	Clashes	Symm-Clashes
1	A	5975	0	5769	267	0
2	A	31	0	19	8	0
3	A	43	0	30	0	0
4	A	4	0	0	0	0
5	A	6	0	0	0	0
All	All	6059	0	5818	267	0

The all-atom clashscore is defined as the number of clashes found per 1000 atoms (including hydrogen atoms). The all-atom clashscore for this structure is 22.

All (267) close contacts within the same asymmetric unit are listed below, sorted by their clash magnitude.

Atom-1	Atom-2	Interatomic distance (Å)	Clash overlap (Å)
1:A:367:PHE:HB2	1:A:370:LEU:CD2	1.47	1.41
1:A:690:LEU:HB2	1:A:691:GLU:HB2	1.26	1.16
1:A:367:PHE:CB	1:A:370:LEU:HD21	1.81	1.11
1:A:471:ASN:HB3	1:A:732:GLN:HE21	1.15	1.05
1:A:100:LEU:HD12	1:A:127:ASN:HD21	1.16	1.05
1:A:367:PHE:CB	1:A:370:LEU:CD2	2.39	0.97
1:A:690:LEU:HB2	1:A:691:GLU:CB	1.99	0.92
1:A:748:LEU:HD11	1:A:785:GLN:HB2	1.53	0.90
1:A:471:ASN:CB	1:A:732:GLN:HE21	1.86	0.88
1:A:577:LYS:HZ3	1:A:578:ARG:HB2	1.38	0.87
1:A:691:GLU:HG2	1:A:692:GLU:O	1.74	0.87
1:A:367:PHE:HB2	1:A:370:LEU:HD21	0.88	0.87
1:A:694:ASP:OD2	1:A:697:LYS:HD2	1.74	0.86
1:A:690:LEU:CB	1:A:691:GLU:HB2	2.06	0.85
1:A:691:GLU:HG2	1:A:692:GLU:H	1.43	0.83
1:A:471:ASN:HB3	1:A:732:GLN:NE2	1.93	0.83
1:A:367:PHE:HB2	1:A:370:LEU:HD23	1.63	0.78
1:A:363:ASP:C	1:A:370:LEU:HD11	2.08	0.74
1:A:586:ILE:HG12	2:A:801:FMN:HM82	1.68	0.74
1:A:157:ARG:NH2	1:A:461:GLN:O	2.24	0.71
1:A:691:GLU:CG	1:A:692:GLU:H	2.04	0.71
1:A:100:LEU:HD12	1:A:127:ASN:ND2	2.00	0.70

Continued on next page...

Continued from previous page...

Atom-1	Atom-2	Interatomic distance (Å)	Clash overlap (Å)
1:A:188:ALA:O	1:A:192:LEU:HD23	1.92	0.70
1:A:577:LYS:NZ	1:A:578:ARG:HB2	2.07	0.69
1:A:161:ARG:HA	1:A:164:VAL:HG12	1.75	0.69
1:A:538:VAL:HG11	1:A:551:ILE:HG21	1.73	0.69
1:A:581:PHE:CD1	1:A:607:ILE:HG22	2.27	0.69
1:A:173:VAL:HG12	1:A:443:TRP:HZ3	1.59	0.68
1:A:236:ALA:HB1	1:A:276:MET:HG2	1.73	0.68
1:A:123:ARG:HB3	1:A:127:ASN:HB2	1.76	0.68
1:A:201:THR:HB	1:A:235:PHE:HE2	1.60	0.66
1:A:125:LEU:H	1:A:128:GLU:HG3	1.61	0.66
1:A:592:ILE:HD11	1:A:622:ARG:HG2	1.78	0.66
1:A:121:MET:HE1	1:A:277:MET:HB3	1.77	0.65
1:A:314:LEU:HD12	1:A:375:ILE:HD11	1.78	0.65
1:A:511:ILE:HD11	1:A:524:LEU:HD21	1.79	0.65
1:A:581:PHE:HD1	1:A:607:ILE:HG22	1.60	0.65
1:A:67:VAL:HG21	1:A:342:ILE:HG22	1.77	0.65
1:A:673:THR:HG21	1:A:681:LEU:HD22	1.79	0.64
1:A:41:ALA:HA	1:A:71:PRO:HD2	1.80	0.64
1:A:698:GLU:OE1	1:A:755:ARG:NH1	2.24	0.64
1:A:495:ARG:HE	1:A:533:THR:CG2	2.10	0.64
1:A:477:MET:SD	1:A:563:VAL:HG11	2.39	0.63
1:A:540:HIS:HB2	1:A:552:HIS:CE1	2.33	0.63
1:A:318:ALA:HA	1:A:375:ILE:HB	1.79	0.63
1:A:249:GLY:O	1:A:258:ARG:NH2	2.32	0.63
1:A:401:MET:HG3	1:A:463:VAL:HG21	1.81	0.62
1:A:457:LEU:HD12	1:A:457:LEU:H	1.64	0.62
1:A:457:LEU:HD12	1:A:457:LEU:N	2.14	0.62
1:A:639:GLY:HA2	1:A:641:ARG:HH12	1.65	0.62
1:A:690:LEU:CD1	1:A:691:GLU:HB2	2.29	0.62
1:A:220:GLU:OE1	1:A:220:GLU:N	2.28	0.62
1:A:302:ARG:NH1	1:A:417:MET:O	2.32	0.61
1:A:464:LYS:HE3	1:A:562:ARG:HH21	1.66	0.61
1:A:580:VAL:HG22	1:A:657:VAL:HG22	1.81	0.60
1:A:651:PRO:HB3	1:A:676:TRP:CD2	2.36	0.60
1:A:569:HIS:CG	1:A:758:VAL:HG23	2.37	0.60
1:A:317:ASN:ND2	1:A:375:ILE:O	2.34	0.60
1:A:313:SER:HA	1:A:461:GLN:HE22	1.67	0.60
1:A:175:LEU:HD13	1:A:295:LEU:HD13	1.84	0.59
1:A:362:HIS:C	1:A:370:LEU:HD13	2.22	0.59
1:A:260:GLN:NE2	1:A:269:ASP:OD1	2.28	0.59
1:A:605:TYR:OH	1:A:627:HIS:ND1	2.24	0.58

Continued on next page...

Continued from previous page...

Atom-1	Atom-2	Interatomic distance (Å)	Clash overlap (Å)
1:A:136:ARG:NH1	1:A:266:VAL:O	2.36	0.58
1:A:184:PRO:HA	1:A:402:GLU:OE2	2.03	0.58
1:A:364:GLU:HA	1:A:370:LEU:HD11	1.85	0.58
1:A:363:ASP:O	1:A:370:LEU:HD11	2.04	0.58
1:A:356:VAL:HG12	1:A:359:SER:H	1.69	0.58
1:A:564:ARG:NH2	1:A:734:ASP:OD2	2.36	0.58
1:A:691:GLU:HG2	1:A:692:GLU:N	2.17	0.57
1:A:669:LEU:O	1:A:673:THR:HG22	2.04	0.57
1:A:633:VAL:HG22	1:A:635:PRO:HD3	1.87	0.57
1:A:639:GLY:HA2	1:A:641:ARG:NH1	2.20	0.57
1:A:735:CYS:SG	1:A:736:GLU:N	2.78	0.57
1:A:158:ARG:NH1	1:A:162:GLU:OE2	2.38	0.57
1:A:464:LYS:HE3	1:A:562:ARG:NH2	2.20	0.57
1:A:694:ASP:OD2	1:A:697:LYS:CD	2.49	0.57
1:A:59:ARG:NH1	1:A:63:ASP:OD1	2.38	0.57
1:A:175:LEU:HB3	1:A:180:LEU:CD2	2.33	0.57
1:A:405:ILE:HA	1:A:408:GLU:HG2	1.87	0.57
1:A:416:HIS:CE1	1:A:448:ASN:HD22	2.23	0.56
1:A:581:PHE:HE1	1:A:605:TYR:HB2	1.69	0.56
1:A:232:PHE:HE1	1:A:277:MET:HB2	1.70	0.56
1:A:619:PHE:O	1:A:623:LEU:N	2.34	0.56
1:A:180:LEU:HD12	1:A:291:SER:HB3	1.86	0.56
1:A:377:ARG:HG2	1:A:379:ASN:H	1.70	0.56
1:A:471:ASN:O	1:A:732:GLN:NE2	2.39	0.56
1:A:606:GLU:HG2	1:A:632:ARG:NH2	2.21	0.56
1:A:267:VAL:HG13	1:A:272:LEU:HD11	1.86	0.56
1:A:522:TYR:CE1	2:A:801:FMN:H2'	2.41	0.55
1:A:718:GLN:O	1:A:776:ARG:NH2	2.38	0.55
1:A:754:HIS:HB3	1:A:764:ARG:HH21	1.72	0.55
1:A:474:ALA:HB2	1:A:564:ARG:HG2	1.89	0.55
1:A:267:VAL:CG1	1:A:272:LEU:HD11	2.36	0.54
1:A:577:LYS:NZ	1:A:578:ARG:CB	2.69	0.54
1:A:511:ILE:O	1:A:521:GLN:HA	2.08	0.54
1:A:694:ASP:OD2	1:A:697:LYS:NZ	2.38	0.54
1:A:302:ARG:NH2	1:A:415:PRO:O	2.41	0.54
1:A:199:MET:O	1:A:203:ARG:HG3	2.07	0.54
1:A:121:MET:CE	1:A:277:MET:HB3	2.38	0.54
1:A:210:THR:HG22	1:A:433:PHE:HD2	1.73	0.53
1:A:751:GLU:OE1	1:A:752:VAL:N	2.32	0.53
1:A:201:THR:HB	1:A:235:PHE:CE2	2.42	0.53
1:A:164:VAL:HA	1:A:167:PHE:CZ	2.43	0.53

Continued on next page...

Continued from previous page...

Atom-1	Atom-2	Interatomic distance (Å)	Clash overlap (Å)
1:A:628:GLY:HA2	1:A:631:VAL:HG12	1.89	0.53
1:A:453:ASP:HB3	1:A:455:GLU:H	1.72	0.53
1:A:196:GLU:HA	1:A:199:MET:HG3	1.89	0.53
1:A:272:LEU:HA	1:A:275:MET:HB2	1.91	0.53
1:A:314:LEU:HD12	1:A:375:ILE:CD1	2.38	0.53
1:A:363:ASP:C	1:A:370:LEU:CD1	2.76	0.53
1:A:752:VAL:HG12	1:A:782:LEU:HD21	1.90	0.53
1:A:625:ARG:NE	1:A:626:ASP:OD2	2.43	0.52
1:A:691:GLU:HG3	1:A:692:GLU:OE1	2.09	0.52
1:A:143:PRO:HG2	1:A:252:TRP:HD1	1.75	0.52
1:A:691:GLU:CG	1:A:692:GLU:N	2.71	0.52
1:A:249:GLY:H	1:A:258:ARG:HH21	1.56	0.52
1:A:266:VAL:HG12	1:A:267:VAL:HG23	1.90	0.52
1:A:490:LEU:O	1:A:537:ALA:HA	2.10	0.52
1:A:690:LEU:HB2	1:A:691:GLU:CG	2.39	0.52
1:A:93:LEU:HD21	1:A:340:THR:HG21	1.91	0.51
1:A:580:VAL:HA	1:A:606:GLU:O	2.11	0.51
1:A:642:MET:HE1	1:A:647:LEU:HD11	1.93	0.51
1:A:239:VAL:O	1:A:243:MET:HG2	2.11	0.51
1:A:652:GLU:CD	1:A:654:GLY:H	2.14	0.50
1:A:296:ARG:NH1	1:A:427:TYR:OH	2.44	0.50
1:A:743:CYS:O	1:A:772:THR:OG1	2.22	0.50
1:A:520:ARG:HH21	1:A:545:ARG:HG3	1.76	0.50
1:A:416:HIS:NE2	1:A:444:ASP:O	2.42	0.50
1:A:582:VAL:HG11	1:A:669:LEU:HD22	1.92	0.50
1:A:314:LEU:HD23	1:A:314:LEU:H	1.77	0.50
1:A:537:ALA:O	2:A:801:FMN:HM71	2.12	0.50
1:A:315:ILE:HG22	1:A:404:GLN:HG2	1.92	0.50
1:A:245:LYS:HD2	1:A:245:LYS:C	2.33	0.49
1:A:453:ASP:OD2	1:A:456:LEU:N	2.45	0.49
1:A:469:SER:HA	1:A:472:THR:HG22	1.95	0.49
1:A:754:HIS:CD2	1:A:764:ARG:HB3	2.48	0.49
1:A:168:ILE:CD1	1:A:414:LEU:HD21	2.42	0.49
1:A:572:LEU:O	1:A:572:LEU:HD12	2.13	0.49
1:A:157:ARG:HG2	1:A:405:ILE:HG21	1.95	0.48
1:A:752:VAL:HG12	1:A:782:LEU:CD2	2.41	0.48
1:A:173:VAL:HG12	1:A:443:TRP:CZ3	2.45	0.48
1:A:701:PHE:CZ	1:A:714:VAL:HG21	2.48	0.48
1:A:520:ARG:NE	2:A:801:FMN:O1P	2.40	0.48
1:A:402:GLU:HG2	1:A:406:PHE:CZ	2.48	0.48
1:A:219:PRO:O	1:A:223:VAL:HG13	2.13	0.48

Continued on next page...

Continued from previous page...

Atom-1	Atom-2	Interatomic distance (Å)	Clash overlap (Å)
1:A:62:ARG:HD2	1:A:363:ASP:HA	1.95	0.48
1:A:316:PRO:HG3	1:A:404:GLN:HE21	1.78	0.48
1:A:523:SER:H	2:A:801:FMN:H6	1.79	0.48
1:A:577:LYS:HZ3	1:A:578:ARG:CB	2.16	0.47
1:A:303:ASP:N	1:A:303:ASP:OD1	2.47	0.47
1:A:367:PHE:CB	1:A:370:LEU:HD23	2.28	0.47
1:A:520:ARG:NH2	1:A:545:ARG:HG3	2.29	0.47
1:A:538:VAL:HA	2:A:801:FMN:HM83	1.95	0.47
1:A:751:GLU:HG3	1:A:778:CYS:SG	2.54	0.47
1:A:205:TYR:HB3	1:A:232:PHE:HB2	1.96	0.47
1:A:456:LEU:HD12	1:A:456:LEU:HA	1.60	0.47
1:A:456:LEU:O	1:A:459:ARG:HB2	2.14	0.47
1:A:469:SER:O	1:A:473:ILE:HG23	2.14	0.47
1:A:704:VAL:HA	1:A:711:THR:HA	1.97	0.47
1:A:717:ASP:OD1	1:A:717:ASP:N	2.47	0.47
1:A:210:THR:HG22	1:A:433:PHE:CD2	2.48	0.47
1:A:312:PRO:HB2	1:A:461:GLN:OE1	2.14	0.47
1:A:456:LEU:HD12	1:A:459:ARG:HD2	1.95	0.47
1:A:522:TYR:HA	2:A:801:FMN:C5A	2.44	0.47
1:A:569:HIS:CD2	1:A:758:VAL:HG23	2.50	0.47
1:A:545:ARG:H	1:A:545:ARG:HG2	1.58	0.47
1:A:721:LEU:O	1:A:725:ARG:HG3	2.15	0.47
1:A:515:CYS:N	1:A:518:VAL:O	2.47	0.47
1:A:694:ASP:CG	1:A:697:LYS:HD2	2.34	0.47
1:A:743:CYS:SG	1:A:771:MET:HE3	2.55	0.47
1:A:658:TYR:CD2	1:A:682:HIS:HB2	2.50	0.47
1:A:54:PRO:O	1:A:58:LEU:HD12	2.14	0.46
1:A:364:GLU:N	1:A:370:LEU:HD11	2.30	0.46
1:A:453:ASP:CB	1:A:455:GLU:H	2.28	0.46
1:A:733:SER:HB2	1:A:736:GLU:HG2	1.97	0.46
1:A:235:PHE:HD1	1:A:235:PHE:O	1.99	0.46
1:A:73:LEU:HD23	1:A:75:TYR:H	1.81	0.46
1:A:159:LEU:HD12	1:A:187:VAL:HG12	1.97	0.46
1:A:694:ASP:OD1	1:A:696:SER:OG	2.23	0.46
1:A:599:LYS:NZ	1:A:626:ASP:OD1	2.49	0.46
1:A:511:ILE:HG21	1:A:563:VAL:CG2	2.45	0.46
1:A:45:PRO:O	1:A:51:GLN:NE2	2.49	0.46
1:A:507:ALA:HB2	1:A:597:GLN:HG3	1.98	0.45
1:A:694:ASP:OD2	1:A:697:LYS:CE	2.64	0.45
1:A:75:TYR:HE2	1:A:333:ARG:HD2	1.80	0.45
1:A:254:PRO:HA	1:A:257:ILE:HD12	1.98	0.45

Continued on next page...

Continued from previous page...

Atom-1	Atom-2	Interatomic distance (Å)	Clash overlap (Å)
1:A:413:ARG:C	1:A:414:LEU:HD23	2.36	0.45
1:A:272:LEU:HD12	1:A:272:LEU:H	1.81	0.45
1:A:453:ASP:HB3	1:A:454:PRO:CA	2.46	0.45
1:A:453:ASP:HB3	1:A:455:GLU:N	2.31	0.45
1:A:102:LYS:HG2	1:A:213:THR:HA	1.99	0.45
1:A:416:HIS:HE1	1:A:448:ASN:HD22	1.64	0.45
1:A:189:LEU:O	1:A:194:VAL:HG12	2.15	0.45
1:A:495:ARG:HE	1:A:533:THR:HG21	1.78	0.45
1:A:586:ILE:HG13	1:A:586:ILE:O	2.17	0.45
1:A:161:ARG:HA	1:A:164:VAL:CG1	2.45	0.45
1:A:511:ILE:CG1	1:A:524:LEU:HD11	2.47	0.45
1:A:511:ILE:CD1	1:A:524:LEU:HD21	2.46	0.45
1:A:781:LYS:C	1:A:782:LEU:HD12	2.37	0.45
1:A:364:GLU:CA	1:A:370:LEU:HD11	2.46	0.45
1:A:175:LEU:HB3	1:A:180:LEU:HD23	1.99	0.44
1:A:62:ARG:HG2	1:A:79:THR:HG22	1.98	0.44
1:A:614:ARG:NH2	1:A:638:GLU:OE1	2.50	0.44
1:A:296:ARG:NE	1:A:300:GLU:OE2	2.50	0.44
1:A:642:MET:CE	1:A:647:LEU:HD11	2.48	0.44
1:A:256:GLY:O	1:A:259:VAL:HG22	2.17	0.44
1:A:304:VAL:CG2	1:A:375:ILE:HD13	2.48	0.44
1:A:705:LEU:HD12	1:A:710:ILE:CG1	2.48	0.44
1:A:104:THR:OG1	1:A:217:PRO:HD2	2.17	0.44
1:A:725:ARG:NH2	1:A:731:ALA:O	2.51	0.44
1:A:23:ILE:HD13	1:A:35:PRO:HG3	2.00	0.43
1:A:311:ASP:OD2	1:A:476:THR:HG21	2.18	0.43
1:A:397:ASN:HA	1:A:400:ARG:HB2	2.00	0.43
1:A:61:SER:HB3	1:A:79:THR:HG21	2.00	0.43
1:A:316:PRO:HG3	1:A:404:GLN:NE2	2.33	0.43
1:A:562:ARG:NH1	1:A:564:ARG:HD3	2.33	0.43
1:A:416:HIS:CD2	1:A:444:ASP:H	2.36	0.43
1:A:457:LEU:H	1:A:457:LEU:CD1	2.28	0.43
1:A:619:PHE:O	1:A:623:LEU:HB2	2.19	0.43
1:A:121:MET:HG2	1:A:122:ASN:O	2.18	0.43
1:A:770:MET:CE	1:A:784:LEU:HD21	2.49	0.43
1:A:471:ASN:C	1:A:732:GLN:NE2	2.72	0.43
1:A:748:LEU:CD1	1:A:785:GLN:HB2	2.37	0.43
1:A:400:ARG:HB3	1:A:465:ILE:HG22	2.00	0.43
1:A:621:ASP:OD1	1:A:621:ASP:N	2.51	0.42
1:A:692:GLU:N	1:A:692:GLU:CD	2.73	0.42
1:A:315:ILE:O	1:A:319:VAL:HG13	2.20	0.42

Continued on next page...

Continued from previous page...

Atom-1	Atom-2	Interatomic distance (Å)	Clash overlap (Å)
1:A:411:THR:O	1:A:415:PRO:HG3	2.19	0.42
1:A:576:ALA:HB3	1:A:579:TYR:CE1	2.55	0.42
1:A:675:HIS:N	1:A:675:HIS:CD2	2.88	0.42
1:A:702:ASP:O	1:A:781:LYS:HA	2.20	0.42
1:A:94:PHE:HB3	1:A:334:ARG:HB3	2.02	0.42
1:A:511:ILE:HG13	1:A:524:LEU:HD11	2.02	0.42
1:A:619:PHE:CD1	1:A:622:ARG:HD3	2.55	0.42
1:A:693:LEU:HD13	1:A:693:LEU:HA	1.86	0.42
1:A:342:ILE:HD12	1:A:347:VAL:HG21	2.01	0.42
1:A:175:LEU:HB2	1:A:439:VAL:HG12	2.01	0.41
1:A:109:GLU:O	1:A:113:VAL:HG23	2.20	0.41
1:A:456:LEU:HD12	1:A:459:ARG:HH11	1.84	0.41
1:A:577:LYS:HB3	1:A:654:GLY:HA3	2.01	0.41
1:A:457:LEU:N	1:A:457:LEU:CD1	2.82	0.41
1:A:630:SER:C	1:A:632:ARG:HH12	2.24	0.41
1:A:689:THR:OG1	1:A:690:LEU:N	2.53	0.41
1:A:165:ASP:O	1:A:168:ILE:HG22	2.20	0.41
1:A:180:LEU:HD12	1:A:291:SER:CB	2.50	0.41
1:A:590:PRO:O	1:A:594:MET:HG3	2.20	0.41
1:A:761:LYS:HA	1:A:761:LYS:HD2	1.88	0.41
1:A:253:MET:HE1	1:A:272:LEU:O	2.20	0.41
1:A:302:ARG:HA	1:A:305:TRP:HB3	2.03	0.41
1:A:201:THR:CB	1:A:235:PHE:HE2	2.29	0.41
1:A:235:PHE:C	1:A:235:PHE:CD1	2.94	0.41
1:A:249:GLY:N	1:A:258:ARG:HH21	2.16	0.41
1:A:741:GLY:HA2	1:A:771:MET:HE1	2.02	0.41
1:A:125:LEU:N	1:A:128:GLU:HG3	2.30	0.41
1:A:606:GLU:HG2	1:A:632:ARG:HH21	1.84	0.41
1:A:302:ARG:NH1	1:A:418:GLU:HB3	2.36	0.40
1:A:511:ILE:HG21	1:A:563:VAL:HG22	2.03	0.40
1:A:253:MET:O	1:A:257:ILE:HG13	2.20	0.40
1:A:272:LEU:HD12	1:A:272:LEU:N	2.37	0.40
1:A:171:GLY:HA2	1:A:443:TRP:CE2	2.56	0.40
1:A:607:ILE:CD1	1:A:623:LEU:HD11	2.51	0.40
1:A:200:ASP:HA	1:A:203:ARG:HD3	2.04	0.40
1:A:515:CYS:SG	1:A:551:ILE:HD11	2.62	0.40
1:A:520:ARG:HD2	2:A:801:FMN:H3'	2.04	0.40
1:A:705:LEU:HD22	1:A:786:LEU:HB3	2.04	0.40
1:A:754:HIS:HB3	1:A:764:ARG:HE	1.86	0.40
1:A:579:TYR:O	1:A:605:TYR:HA	2.21	0.40

There are no symmetry-related clashes.

5.3 Torsion angles

5.3.1 Protein backbone

In the following table, the Percentiles column shows the percent Ramachandran outliers of the chain as a percentile score with respect to all X-ray entries followed by that with respect to entries of similar resolution.

The Analysed column shows the number of residues for which the backbone conformation was analysed, and the total number of residues.

Mol	Chain	Analysed	Favoured	Allowed	Outliers	Percentiles	
1	A	763/786 (97%)	739 (97%)	24 (3%)	0	100	100

There are no Ramachandran outliers to report.

5.3.2 Protein sidechains

In the following table, the Percentiles column shows the percent sidechain outliers of the chain as a percentile score with respect to all X-ray entries followed by that with respect to entries of similar resolution.

The Analysed column shows the number of residues for which the sidechain conformation was analysed, and the total number of residues.

Mol	Chain	Analysed	Rotameric	Outliers	Percentiles	
1	A	642/661 (97%)	627 (98%)	15 (2%)	50	75

All (15) residues with a non-rotameric sidechain are listed below:

Mol	Chain	Res	Type
1	A	73	LEU
1	A	192	LEU
1	A	204	GLU
1	A	235	PHE
1	A	244	ARG
1	A	245	LYS
1	A	265	ASP
1	A	296	ARG
1	A	314	LEU
1	A	457	LEU
1	A	460	ARG
1	A	470	LYS
1	A	521	GLN

Continued on next page...

Continued from previous page...

Mol	Chain	Res	Type
1	A	572	LEU
1	A	693	LEU

Sometimes sidechains can be flipped to improve hydrogen bonding and reduce clashes. All (9) such sidechains are listed below:

Mol	Chain	Res	Type
1	A	127	ASN
1	A	397	ASN
1	A	448	ASN
1	A	461	GLN
1	A	540	HIS
1	A	552	HIS
1	A	597	GLN
1	A	675	HIS
1	A	732	GLN

5.3.3 RNA [i](#)

There are no RNA molecules in this entry.

5.4 Non-standard residues in protein, DNA, RNA chains [i](#)

There are no non-standard protein/DNA/RNA residues in this entry.

5.5 Carbohydrates [i](#)

There are no monosaccharides in this entry.

5.6 Ligand geometry [i](#)

3 ligands are modelled in this entry.

In the following table, the Counts columns list the number of bonds (or angles) for which Mogul statistics could be retrieved, the number of bonds (or angles) that are observed in the model and the number of bonds (or angles) that are defined in the Chemical Component Dictionary. The Link column lists molecule types, if any, to which the group is linked. The Z score for a bond length (or angle) is the number of standard deviations the observed value is removed from the expected value. A bond length (or angle) with $|Z| > 2$ is considered an outlier worth inspection. RMSZ is the root-mean-square of all Z scores of the bond lengths (or angles).

Mol	Type	Chain	Res	Link	Bond lengths			Bond angles		
					Counts	RMSZ	# Z > 2	Counts	RMSZ	# Z > 2
3	HEM	A	802	1	42,50,50	4.45	20 (47%)	46,82,82	3.78	22 (47%)
4	FES	A	803	1	0,4,4	-	-	-	-	-
2	FMN	A	801	-	33,33,33	1.94	8 (24%)	48,50,50	1.71	13 (27%)

In the following table, the Chirals column lists the number of chiral outliers, the number of chiral centers analysed, the number of these observed in the model and the number defined in the Chemical Component Dictionary. Similar counts are reported in the Torsion and Rings columns. '-' means no outliers of that kind were identified.

Mol	Type	Chain	Res	Link	Chirals	Torsions	Rings
3	HEM	A	802	1	-	2/12/54/54	-
4	FES	A	803	1	-	-	0/1/1/1
2	FMN	A	801	-	-	2/18/18/18	0/3/3/3

All (28) bond length outliers are listed below:

Mol	Chain	Res	Type	Atoms	Z	Observed(Å)	Ideal(Å)
3	A	802	HEM	C3B-C2B	14.29	1.66	1.37
3	A	802	HEM	C3D-C2D	13.31	1.65	1.36
3	A	802	HEM	C4D-ND	9.10	1.55	1.40
3	A	802	HEM	C4B-NB	7.60	1.53	1.38
3	A	802	HEM	C1D-ND	7.57	1.53	1.38
2	A	801	FMN	O4-C4	6.55	1.36	1.23
3	A	802	HEM	CHB-C1B	6.32	1.50	1.34
3	A	802	HEM	C1B-NB	6.10	1.50	1.40
3	A	802	HEM	CHA-C4D	5.50	1.48	1.34
3	A	802	HEM	C1B-C2B	4.62	1.53	1.44
3	A	802	HEM	CBB-CAB	3.95	1.49	1.30
3	A	802	HEM	C3B-C4B	3.71	1.52	1.44
3	A	802	HEM	CHC-C4B	3.54	1.50	1.40
3	A	802	HEM	C4D-C3D	3.31	1.50	1.45
2	A	801	FMN	C5'-C4'	3.28	1.56	1.51
2	A	801	FMN	C9A-N10	-3.20	1.35	1.41
3	A	802	HEM	CBC-CAC	3.16	1.49	1.29
3	A	802	HEM	C4A-CHB	3.14	1.49	1.41
3	A	802	HEM	C3C-C4C	3.13	1.46	1.41
3	A	802	HEM	C1D-C2D	2.93	1.50	1.44
2	A	801	FMN	O2'-C2'	-2.89	1.37	1.43
2	A	801	FMN	C5A-N5	-2.83	1.34	1.39
2	A	801	FMN	O4'-C4'	-2.47	1.38	1.43
2	A	801	FMN	C7M-C7	2.30	1.55	1.51

Continued on next page...

Continued from previous page...

Mol	Chain	Res	Type	Atoms	Z	Observed(Å)	Ideal(Å)
3	A	802	HEM	CHD-C1D	2.25	1.47	1.40
3	A	802	HEM	C1A-CHA	2.11	1.46	1.41
2	A	801	FMN	C2-N3	-2.09	1.34	1.39
3	A	802	HEM	C1A-NA	2.02	1.40	1.36

All (35) bond angle outliers are listed below:

Mol	Chain	Res	Type	Atoms	Z	Observed(°)	Ideal(°)
3	A	802	HEM	C4C-CHD-C1D	-10.79	108.32	122.56
3	A	802	HEM	CHD-C1D-C2D	-8.12	112.20	125.03
3	A	802	HEM	O2D-CGD-O1D	6.98	141.28	123.33
3	A	802	HEM	O2A-CGA-O1A	6.78	140.78	123.33
3	A	802	HEM	C2D-C1D-ND	6.52	117.44	109.90
3	A	802	HEM	CHA-C4D-C3D	-6.48	113.28	125.23
3	A	802	HEM	C3D-C4D-ND	5.85	116.59	110.17
3	A	802	HEM	C4B-CHC-C1C	-5.75	114.97	122.56
3	A	802	HEM	CHD-C1D-ND	5.47	130.31	124.44
3	A	802	HEM	C4D-ND-C1D	-5.22	99.02	105.21
3	A	802	HEM	O1D-CGD-CBD	-4.77	107.96	123.09
3	A	802	HEM	CHA-C4D-ND	4.62	130.10	124.37
3	A	802	HEM	C2C-C3C-C4C	-4.54	103.73	106.90
2	A	801	FMN	O4'-C4'-C3'	4.38	119.49	109.25
3	A	802	HEM	O1A-CGA-CBA	-4.26	109.59	123.09
2	A	801	FMN	C4-N3-C2	-3.77	118.95	125.64
3	A	802	HEM	C4A-C3A-C2A	-3.69	104.43	107.00
2	A	801	FMN	O4'-C4'-C5'	-3.68	101.88	109.99
3	A	802	HEM	C1D-C2D-C3D	-3.42	103.38	106.98
3	A	802	HEM	C3C-C4C-NC	3.10	116.79	110.94
2	A	801	FMN	O5'-C5'-C4'	3.00	117.37	109.36
2	A	801	FMN	C7M-C7-C6	-2.98	114.32	119.57
2	A	801	FMN	C4A-C10-N1	-2.93	117.41	124.59
2	A	801	FMN	C4A-C10-N10	2.74	120.41	116.48
3	A	802	HEM	C1B-NB-C4B	2.74	108.45	105.21
2	A	801	FMN	C4A-C4-N3	2.62	119.93	113.25
3	A	802	HEM	CAD-C3D-C4D	2.56	129.16	124.70
2	A	801	FMN	O4-C4-C4A	-2.51	119.91	126.53
3	A	802	HEM	C4D-C3D-C2D	-2.34	103.49	106.89
2	A	801	FMN	O3'-C3'-C2'	2.17	113.85	108.93
3	A	802	HEM	C4B-C3B-C2B	-2.10	105.35	107.28
3	A	802	HEM	CAA-CBA-CGA	2.10	119.48	113.83
2	A	801	FMN	C10-N1-C2	2.07	121.33	116.85
2	A	801	FMN	C7M-C7-C8	2.02	124.88	120.76

Continued on next page...

Continued from previous page...

Mol	Chain	Res	Type	Atoms	Z	Observed(°)	Ideal(°)
2	A	801	FMN	C10-C4A-N5	-2.00	120.72	124.81

There are no chirality outliers.

All (4) torsion outliers are listed below:

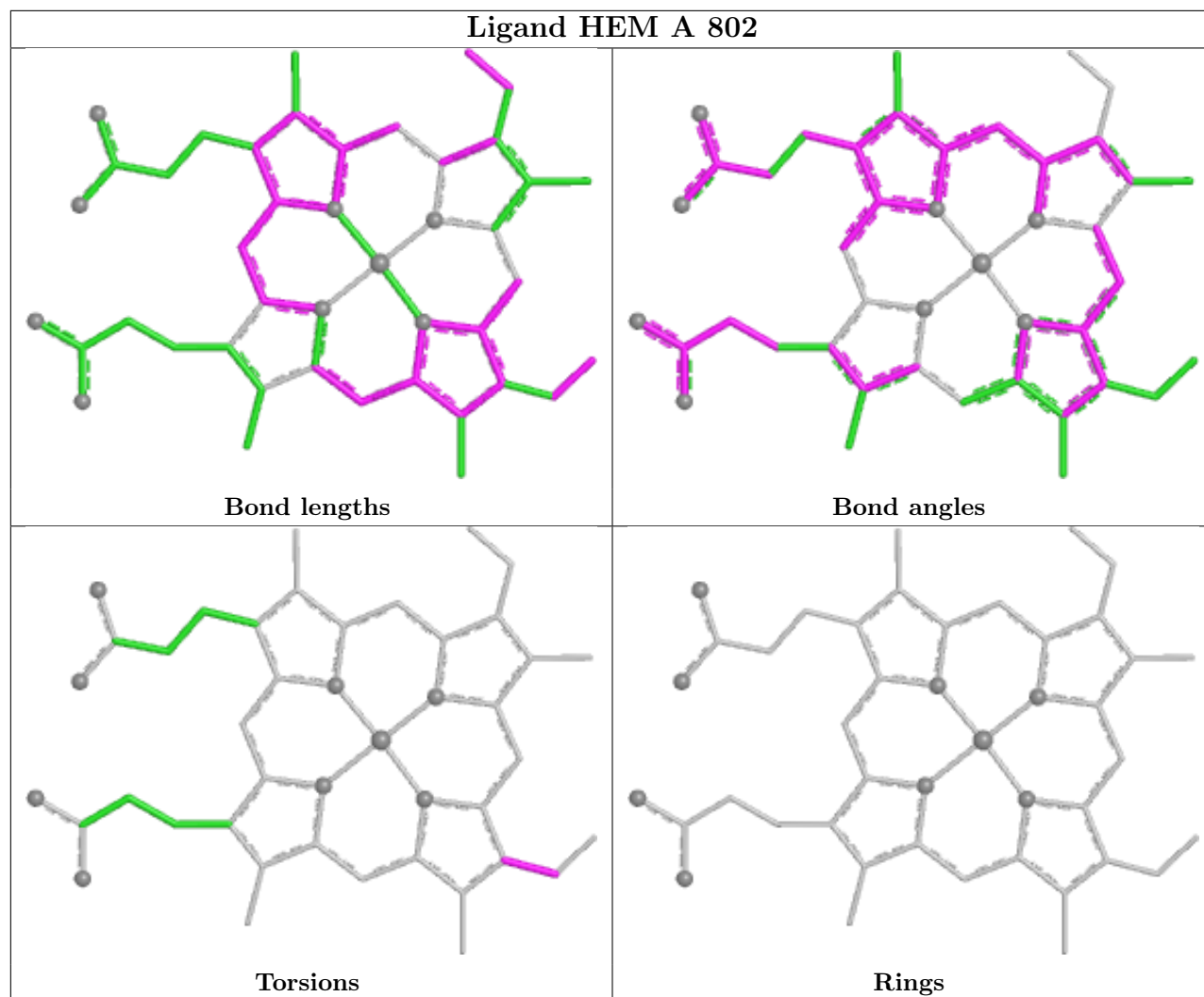
Mol	Chain	Res	Type	Atoms
3	A	802	HEM	C2B-C3B-CAB-CBB
2	A	801	FMN	O4'-C4'-C5'-O5'
3	A	802	HEM	C4B-C3B-CAB-CBB
2	A	801	FMN	C5'-O5'-P-O3P

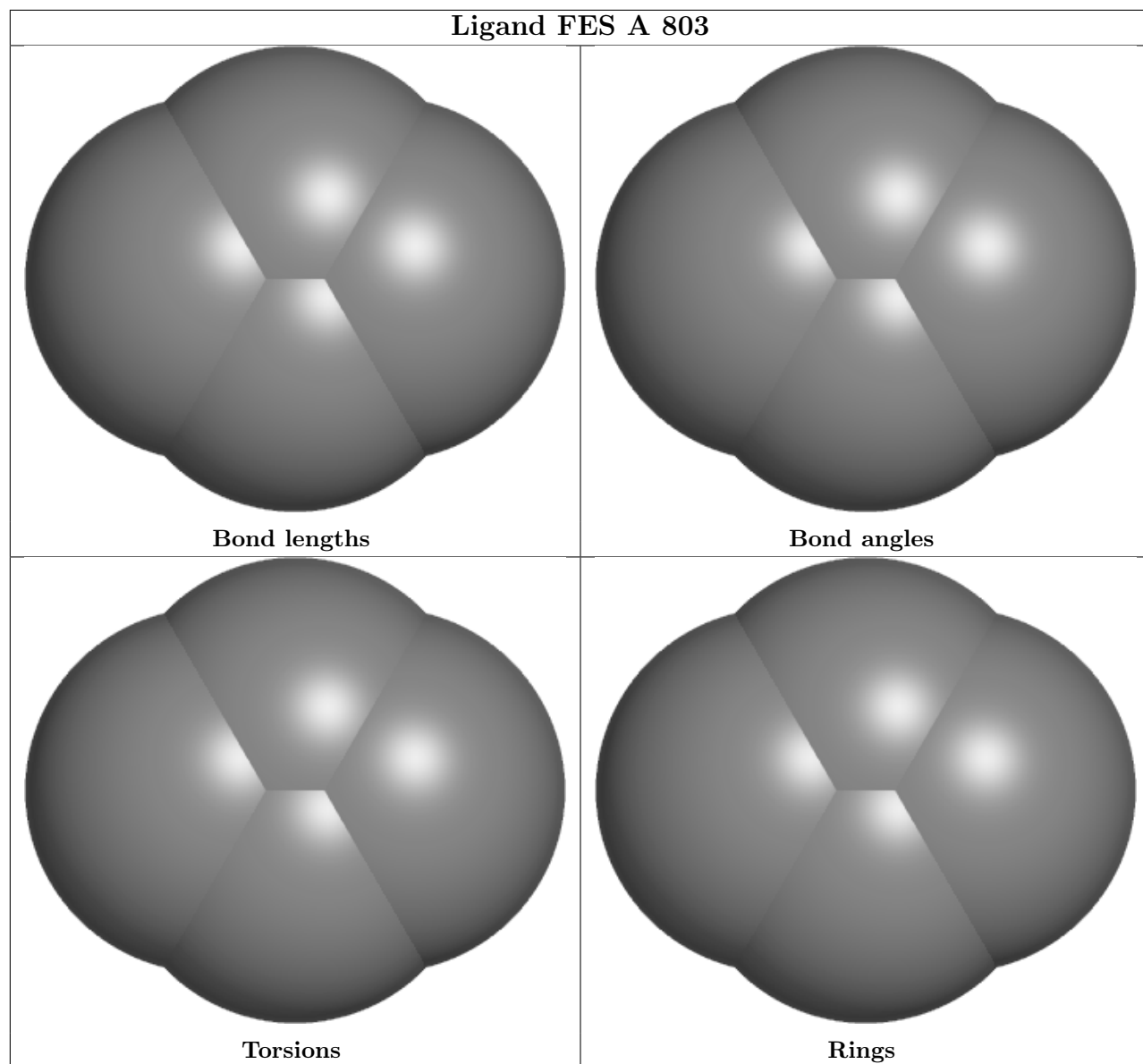
There are no ring outliers.

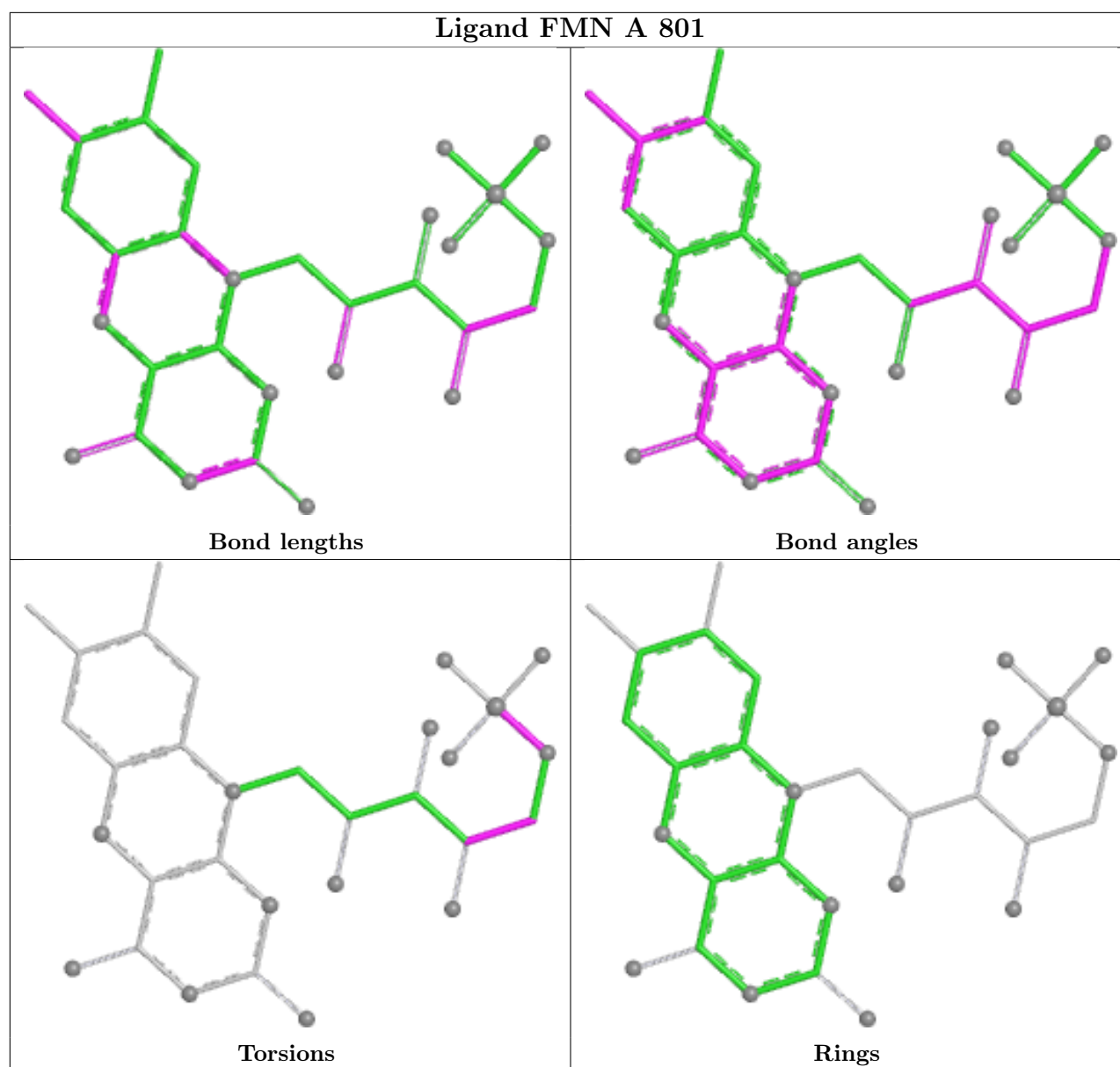
1 monomer is involved in 8 short contacts:

Mol	Chain	Res	Type	Clashes	Symm-Clashes
2	A	801	FMN	8	0

The following is a two-dimensional graphical depiction of Mogul quality analysis of bond lengths, bond angles, torsion angles, and ring geometry for all instances of the Ligand of Interest. In addition, ligands with molecular weight > 250 and outliers as shown on the validation Tables will also be included. For torsion angles, if less than 5% of the Mogul distribution of torsion angles is within 10 degrees of the torsion angle in question, then that torsion angle is considered an outlier. Any bond that is central to one or more torsion angles identified as an outlier by Mogul will be highlighted in the graph. For rings, the root-mean-square deviation (RMSD) between the ring in question and similar rings identified by Mogul is calculated over all ring torsion angles. If the average RMSD is greater than 60 degrees and the minimal RMSD between the ring in question and any Mogul-identified rings is also greater than 60 degrees, then that ring is considered an outlier. The outliers are highlighted in purple. The color gray indicates Mogul did not find sufficient equivalents in the CSD to analyse the geometry.







5.7 Other polymers [i](#)

There are no such residues in this entry.

5.8 Polymer linkage issues [i](#)

There are no chain breaks in this entry.

6 Fit of model and data ⓘ

6.1 Protein, DNA and RNA chains ⓘ

In the following table, the column labelled ‘#RSRZ> 2’ contains the number (and percentage) of RSRZ outliers, followed by percent RSRZ outliers for the chain as percentile scores relative to all X-ray entries and entries of similar resolution. The OWAB column contains the minimum, median, 95th percentile and maximum values of the occupancy-weighted average B-factor per residue. The column labelled ‘Q< 0.9’ lists the number of (and percentage) of residues with an average occupancy less than 0.9.

Mol	Chain	Analysed	<RSRZ>	#RSRZ>2	OWAB(Å ²)	Q<0.9
1	A	765/786 (97%)	0.34	35 (4%) 32 26	61, 96, 128, 144	0

All (35) RSRZ outliers are listed below:

Mol	Chain	Res	Type	RSRZ
1	A	633	VAL	4.2
1	A	454	PRO	3.9
1	A	631	VAL	3.6
1	A	609	TYR	3.4
1	A	570	PHE	3.3
1	A	23	ILE	3.2
1	A	465	ILE	3.1
1	A	492	ILE	2.9
1	A	370	LEU	2.8
1	A	617	MET	2.8
1	A	561	LEU	2.7
1	A	489	ILE	2.7
1	A	618	ALA	2.6
1	A	607	ILE	2.5
1	A	417	MET	2.5
1	A	623	LEU	2.5
1	A	380	ALA	2.4
1	A	482	LEU	2.4
1	A	534	PHE	2.4
1	A	640	VAL	2.4
1	A	632	ARG	2.4
1	A	716	ALA	2.4
1	A	650	ASP	2.3
1	A	592	ILE	2.3
1	A	619	PHE	2.2
1	A	563	VAL	2.2
1	A	383	HIS	2.2

Continued on next page...

Continued from previous page...

Mol	Chain	Res	Type	RSRZ
1	A	410	LEU	2.2
1	A	414	LEU	2.2
1	A	583	ALA	2.2
1	A	536	VAL	2.1
1	A	691	GLU	2.1
1	A	468	PRO	2.1
1	A	742	ALA	2.1
1	A	342	ILE	2.0

6.2 Non-standard residues in protein, DNA, RNA chains [i](#)

There are no non-standard protein/DNA/RNA residues in this entry.

6.3 Carbohydrates [i](#)

There are no monosaccharides in this entry.

6.4 Ligands [i](#)

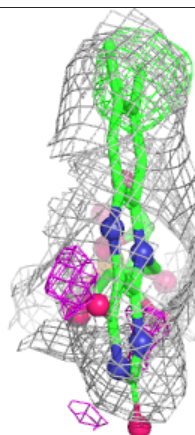
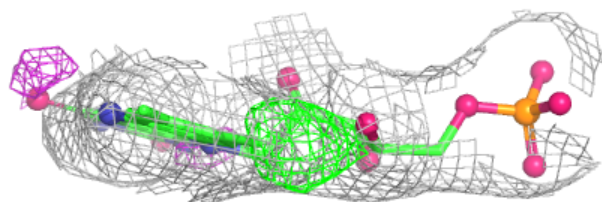
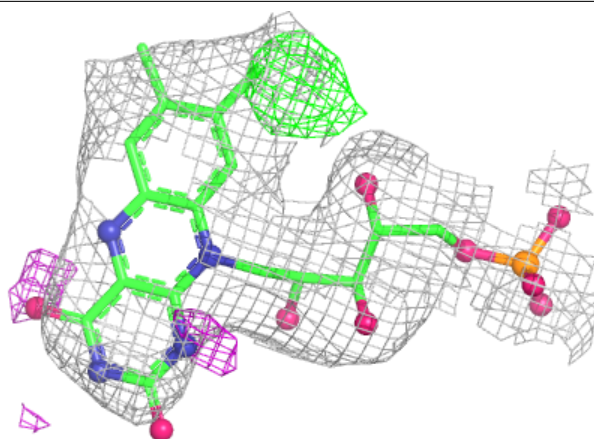
In the following table, the Atoms column lists the number of modelled atoms in the group and the number defined in the chemical component dictionary. The B-factors column lists the minimum, median, 95th percentile and maximum values of B factors of atoms in the group. The column labelled 'Q< 0.9' lists the number of atoms with occupancy less than 0.9.

Mol	Type	Chain	Res	Atoms	RSCC	RSR	B-factors(\AA^2)	Q<0.9
2	FMN	A	801	31/31	0.89	0.19	76,99,111,112	0
3	HEM	A	802	43/43	0.98	0.26	54,67,76,78	0
4	FES	A	803	4/4	0.99	0.19	82,82,83,84	0

The following is a graphical depiction of the model fit to experimental electron density of all instances of the Ligand of Interest. In addition, ligands with molecular weight > 250 and outliers as shown on the geometry validation Tables will also be included. Each fit is shown from different orientation to approximate a three-dimensional view.

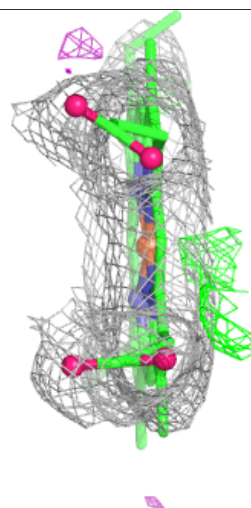
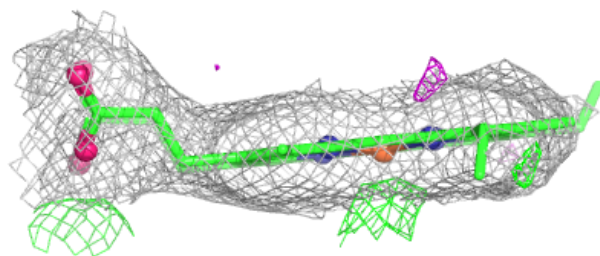
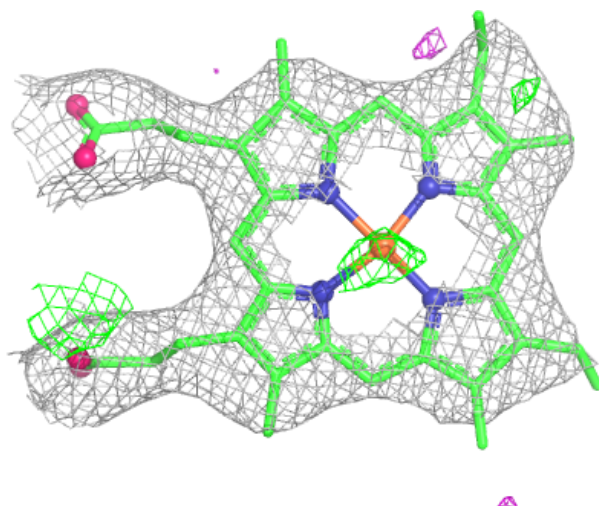
Electron density around FMN A 801:

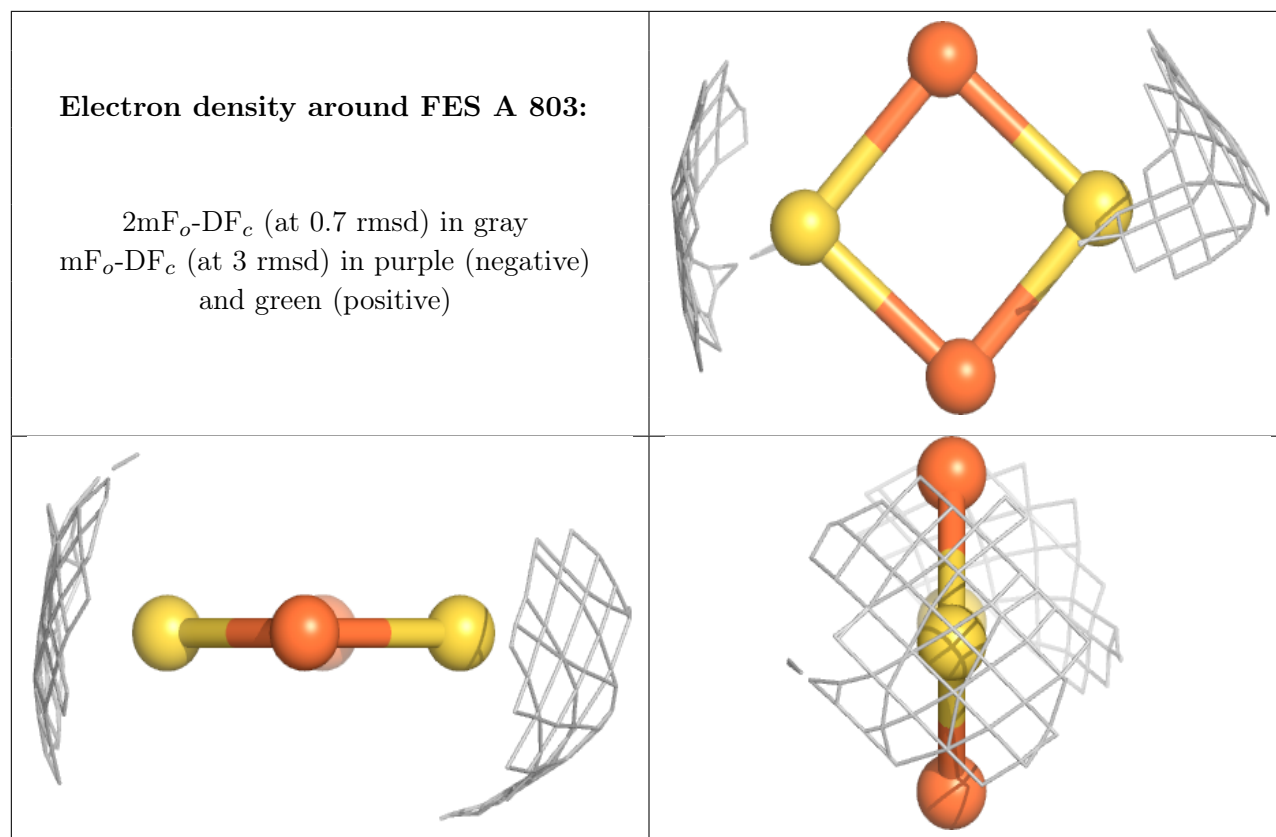
$2mF_o - DF_c$ (at 0.7 rmsd) in gray
 $mF_o - DF_c$ (at 3 rmsd) in purple (negative)
and green (positive)



Electron density around HEM A 802:

$2mF_o-DF_c$ (at 0.7 rmsd) in gray
 mF_o-DF_c (at 3 rmsd) in purple (negative)
and green (positive)





6.5 Other polymers [i](#)

There are no such residues in this entry.