



wwPDB EM Validation Summary Report ⓘ

Mar 22, 2025 – 03:29 PM EDT

PDB ID : 7KI1
EMDB ID : EMD-22883
Title : Taspoglutide-bound Glucagon-Like Peptide-1 (GLP-1) Receptor in Complex with Gs Protein
Authors : Zhang, X.; Belousoff, M.J.; Danev, R.; Sexton, P.M.; Wootten, D.
Deposited on : 2020-10-22
Resolution : 2.50 Å(reported)

This is a wwPDB EM Validation Summary Report for a publicly released PDB entry.

We welcome your comments at validation@mail.wwpdb.org

A user guide is available at

<https://www.wwpdb.org/validation/2017/EMValidationReportHelp>
with specific help available everywhere you see the ⓘ symbol.

The types of validation reports are described at

<http://www.wwpdb.org/validation/2017/FAQs#types>.

The following versions of software and data (see [references ⓘ](#)) were used in the production of this report:

EMDB validation analysis : 0.0.1.dev117
Mogul : 2022.3.0, CSD as543be (2022)
MolProbity : 4.02b-467
Percentile statistics : 20231227.v01 (using entries in the PDB archive December 27th 2023)
MapQ : 1.9.13
Ideal geometry (proteins) : Engh & Huber (2001)
Ideal geometry (DNA, RNA) : Parkinson et al. (1996)
Validation Pipeline (wwPDB-VP) : 2.41.4

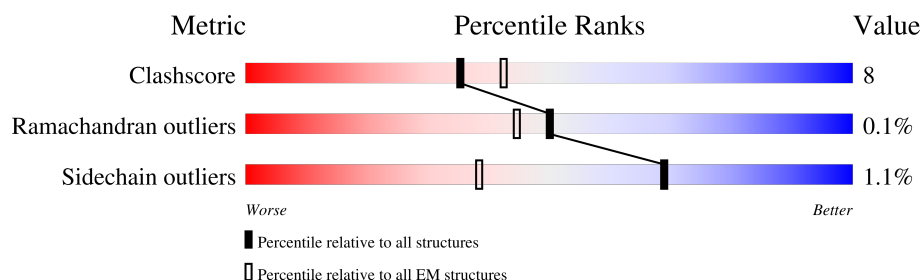
1 Overall quality at a glance

The following experimental techniques were used to determine the structure:

ELECTRON MICROSCOPY

The reported resolution of this entry is 2.50 Å.

Percentile scores (ranging between 0-100) for global validation metrics of the entry are shown in the following graphic. The table shows the number of entries on which the scores are based.



Metric	Whole archive (#Entries)	EM structures (#Entries)
Clashscore	210492	15764
Ramachandran outliers	207382	16835
Sidechain outliers	206894	16415

The table below summarises the geometric issues observed across the polymeric chains and their fit to the map. The red, orange, yellow and green segments of the bar indicate the fraction of residues that contain outliers for ≥ 3 , 2, 1 and 0 types of geometric quality criteria respectively. A grey segment represents the fraction of residues that are not modelled. The numeric value for each fraction is indicated below the corresponding segment, with a dot representing fractions $\leq 5\%$. The upper red bar (where present) indicates the fraction of residues that have poor fit to the EM map (all-atom inclusion $< 40\%$). The numeric value is given above the bar.

Mol	Chain	Length	Quality of chain
1	A	394	<div> <div>39%</div> <div>72%</div> <div>17%</div> <div>11%</div> </div>
2	B	340	<div> <div>85%</div> <div>15%</div> </div>
3	G	58	<div> <div>10%</div> <div>88%</div> <div>10%</div> </div>
4	N	128	<div> <div>88%</div> <div>10%</div> </div>
5	R	491	<div> <div>35%</div> <div>61%</div> <div>18%</div> <div>22%</div> </div>
6	P	31	<div> <div>61%</div> <div>81%</div> <div>16%</div> </div>

2 Entry composition

There are 7 unique types of molecules in this entry. The entry contains 10265 atoms, of which 0 are hydrogens and 0 are deuteriums.

In the tables below, the AltConf column contains the number of residues with at least one atom in alternate conformation and the Trace column contains the number of residues modelled with at most 2 atoms.

- Molecule 1 is a protein called Guanine nucleotide-binding protein G(s) subunit alpha isoforms short.

Mol	Chain	Residues	Atoms					AltConf	Trace
1	A	349	Total	C	N	O	S	0	0
			2772	1763	486	512	11		

There are 9 discrepancies between the modelled and reference sequences:

Chain	Residue	Modelled	Actual	Comment	Reference
A	54	ASN	SER	conflict	UNP P63092
A	226	ALA	GLY	conflict	UNP P63092
A	268	ALA	GLU	conflict	UNP P63092
A	271	LYS	ASN	conflict	UNP P63092
A	274	ASP	LYS	conflict	UNP P63092
A	280	LYS	ARG	conflict	UNP P63092
A	284	ASP	THR	conflict	UNP P63092
A	285	THR	ILE	conflict	UNP P63092
A	366	SER	ALA	conflict	UNP P63092

- Molecule 2 is a protein called Guanine nucleotide-binding protein G(I)/G(S)/G(T) subunit beta-1.

Mol	Chain	Residues	Atoms					AltConf	Trace
2	B	338	Total	C	N	O	S	0	0
			2600	1604	467	508	21		

There is a discrepancy between the modelled and reference sequences:

Chain	Residue	Modelled	Actual	Comment	Reference
B	1	GLN	-	expression tag	UNP P62873

- Molecule 3 is a protein called Guanine nucleotide-binding protein G(I)/G(S)/G(O) subunit gamma-2.

Mol	Chain	Residues	Atoms					AltConf	Trace
3	G	57	Total	C	N	O	S	0	0
			436	273	77	83	3		

- Molecule 4 is a protein called Nb35.

Mol	Chain	Residues	Atoms					AltConf	Trace
4	N	126	Total	C	N	O	S	0	0
			961	599	168	188	6		

- Molecule 5 is a protein called Glucagon-like peptide 1 receptor.

Mol	Chain	Residues	Atoms					AltConf	Trace
5	R	385	Total	C	N	O	S	0	0
			3186	2106	517	545	18		

There are 52 discrepancies between the modelled and reference sequences:

Chain	Residue	Modelled	Actual	Comment	Reference
R	-8	MET	-	initiating methionine	UNP P43220
R	-7	LYS	-	expression tag	UNP P43220
R	-6	THR	-	expression tag	UNP P43220
R	-5	ILE	-	expression tag	UNP P43220
R	-4	ILE	-	expression tag	UNP P43220
R	-3	ALA	-	expression tag	UNP P43220
R	-2	LEU	-	expression tag	UNP P43220
R	-1	SER	-	expression tag	UNP P43220
R	0	TYR	-	expression tag	UNP P43220
R	1	ILE	-	expression tag	UNP P43220
R	2	PHE	-	expression tag	UNP P43220
R	3	CYS	-	expression tag	UNP P43220
R	4	LEU	-	expression tag	UNP P43220
R	5	VAL	-	expression tag	UNP P43220
R	6	PHE	-	expression tag	UNP P43220
R	7	ALA	-	expression tag	UNP P43220
R	8	ASP	-	expression tag	UNP P43220
R	9	TYR	-	expression tag	UNP P43220
R	10	LYS	-	expression tag	UNP P43220
R	11	ASP	-	expression tag	UNP P43220
R	12	ASP	-	expression tag	UNP P43220
R	13	ASP	-	expression tag	UNP P43220
R	14	ASP	-	expression tag	UNP P43220
R	15	LEU	-	expression tag	UNP P43220
R	16	GLU	-	expression tag	UNP P43220

Continued on next page...

Continued from previous page...

Chain	Residue	Modelled	Actual	Comment	Reference
R	17	VAL	-	expression tag	UNP P43220
R	18	LEU	-	expression tag	UNP P43220
R	19	PHE	-	expression tag	UNP P43220
R	20	GLN	-	expression tag	UNP P43220
R	21	GLY	-	expression tag	UNP P43220
R	22	PRO	-	expression tag	UNP P43220
R	23	ALA	-	expression tag	UNP P43220
R	260	PHE	LEU	conflict	UNP P43220
R	464	PRO	-	expression tag	UNP P43220
R	465	ALA	-	expression tag	UNP P43220
R	466	GLY	-	expression tag	UNP P43220
R	467	LEU	-	expression tag	UNP P43220
R	468	GLU	-	expression tag	UNP P43220
R	469	VAL	-	expression tag	UNP P43220
R	470	LEU	-	expression tag	UNP P43220
R	471	PHE	-	expression tag	UNP P43220
R	472	GLN	-	expression tag	UNP P43220
R	473	GLY	-	expression tag	UNP P43220
R	474	PRO	-	expression tag	UNP P43220
R	475	HIS	-	expression tag	UNP P43220
R	476	HIS	-	expression tag	UNP P43220
R	477	HIS	-	expression tag	UNP P43220
R	478	HIS	-	expression tag	UNP P43220
R	479	HIS	-	expression tag	UNP P43220
R	480	HIS	-	expression tag	UNP P43220
R	481	HIS	-	expression tag	UNP P43220
R	482	HIS	-	expression tag	UNP P43220

- Molecule 6 is a protein called Taspoglutide.

Mol	Chain	Residues	Atoms				AltConf	Trace
6	P	31	Total	C	N	O	0	1
			237	152	40	45		

- Molecule 7 is water.

Mol	Chain	Residues	Atoms		AltConf
7	A	15	Total	O	0
			15	15	
7	B	42	Total	O	0
			42	42	

Continued on next page...

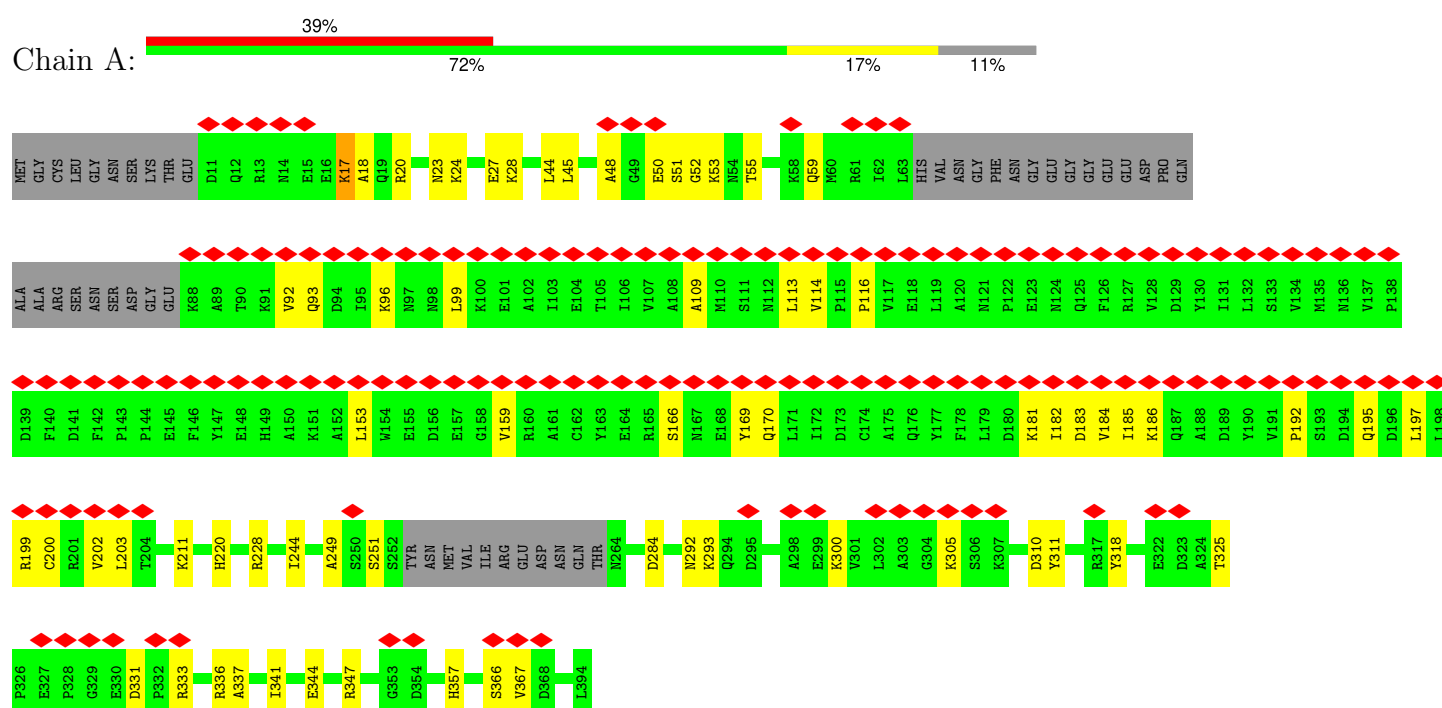
Continued from previous page...

Mol	Chain	Residues	Atoms		AltConf
7	N	2	Total 2	O 2	0
7	R	13	Total 13	O 13	0
7	P	1	Total 1	O 1	0

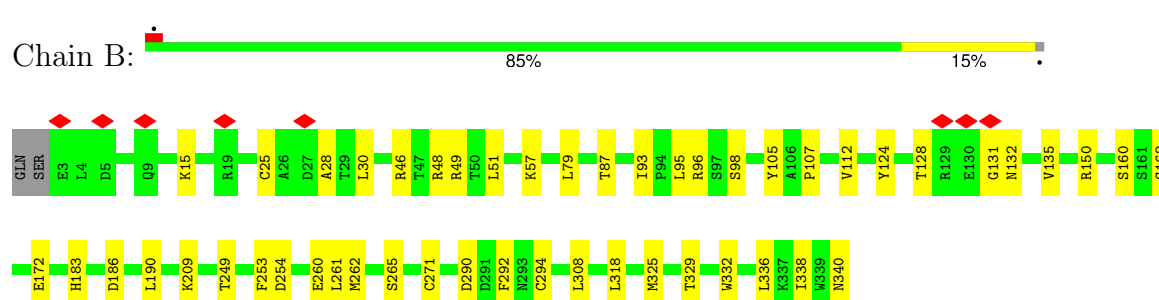
3 Residue-property plots [i](#)

These plots are drawn for all protein, RNA, DNA and oligosaccharide chains in the entry. The first graphic for a chain summarises the proportions of the various outlier classes displayed in the second graphic. The second graphic shows the sequence view annotated by issues in geometry and atom inclusion in map density. Residues are color-coded according to the number of geometric quality criteria for which they contain at least one outlier: green = 0, yellow = 1, orange = 2 and red = 3 or more. A red diamond above a residue indicates a poor fit to the EM map for this residue (all-atom inclusion < 40%). Stretches of 2 or more consecutive residues without any outlier are shown as a green connector. Residues present in the sample, but not in the model, are shown in grey.

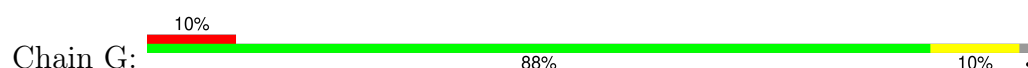
- Molecule 1: Guanine nucleotide-binding protein G(s) subunit alpha isoforms short

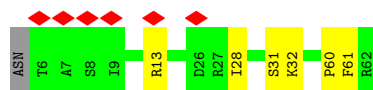


- Molecule 2: Guanine nucleotide-binding protein G(I)/G(S)/G(T) subunit beta-1



- Molecule 3: Guanine nucleotide-binding protein G(I)/G(S)/G(O) subunit gamma-2





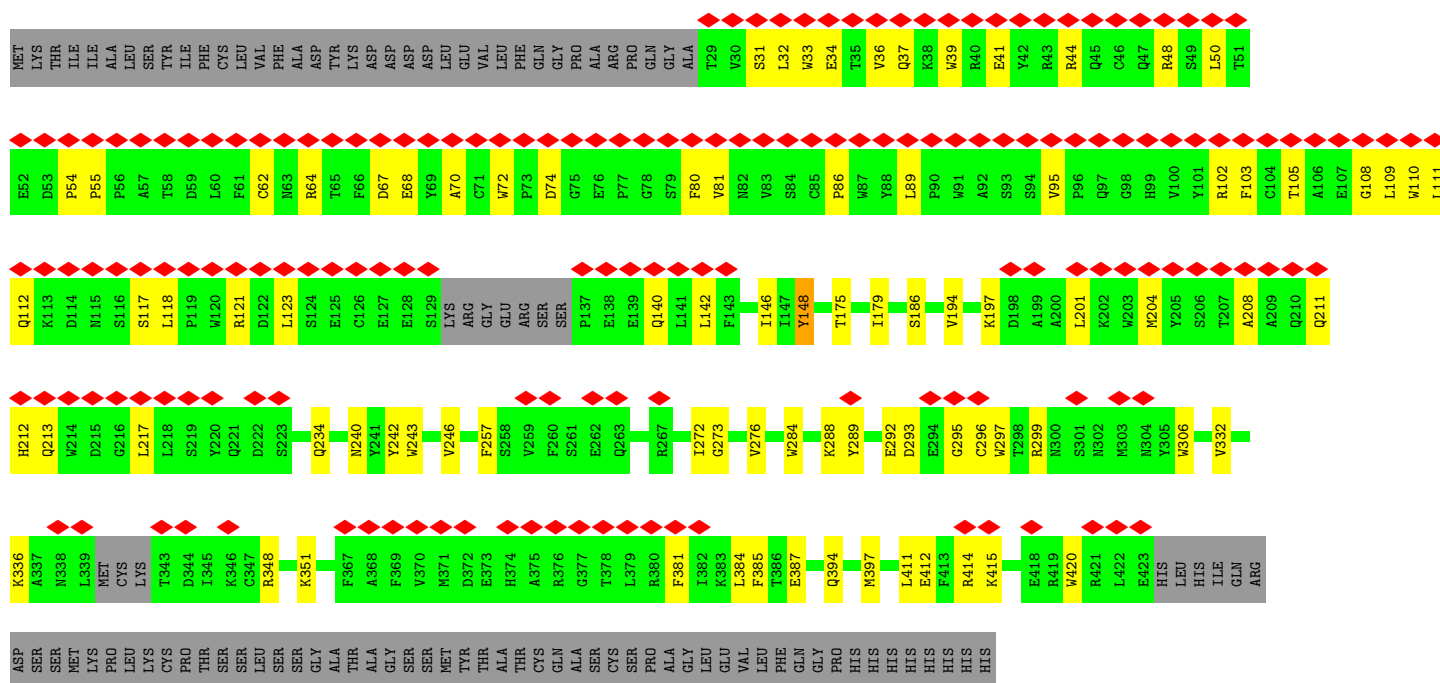
- Molecule 4: Nb35

Chain N: 88% 10%



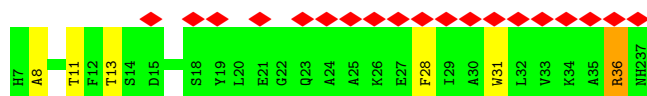
- Molecule 5: Glucagon-like peptide 1 receptor

Chain R: 35% 61% 18% 22%



- Molecule 6: Taspoglutide

Chain P: 61% 81% 16%



4 Experimental information

Property	Value	Source
EM reconstruction method	SINGLE PARTICLE	Depositor
Imposed symmetry	POINT, Not provided	
Number of particles used	625241	Depositor
Resolution determination method	FSC 0.143 CUT-OFF	Depositor
CTF correction method	PHASE FLIPPING AND AMPLITUDE CORRECTION	Depositor
Microscope	FEI TITAN KRIOS	Depositor
Voltage (kV)	300	Depositor
Electron dose ($e^-/\text{\AA}^2$)	0.887	Depositor
Minimum defocus (nm)	Not provided	
Maximum defocus (nm)	Not provided	
Magnification	Not provided	
Image detector	GATAN K3 BIOQUANTUM (6k x 4k)	Depositor
Maximum map value	0.465	Depositor
Minimum map value	-0.251	Depositor
Average map value	-0.000	Depositor
Map value standard deviation	0.012	Depositor
Recommended contour level	0.046	Depositor
Map size (\AA)	212.432, 212.432, 212.432	wwPDB
Map dimensions	176, 176, 176	wwPDB
Map angles ($^\circ$)	90.0, 90.0, 90.0	wwPDB
Pixel spacing (\AA)	1.207, 1.207, 1.207	Depositor

5 Model quality [i](#)

5.1 Standard geometry [i](#)

Bond lengths and bond angles in the following residue types are not validated in this section: NH2, AIB

The Z score for a bond length (or angle) is the number of standard deviations the observed value is removed from the expected value. A bond length (or angle) with $|Z| > 5$ is considered an outlier worth inspection. RMSZ is the root-mean-square of all Z scores of the bond lengths (or angles).

Mol	Chain	Bond lengths		Bond angles	
		RMSZ	$\# Z > 5$	RMSZ	$\# Z > 5$
1	A	0.38	0/2827	0.46	0/3825
2	B	0.44	0/2647	0.56	0/3589
3	G	0.35	0/442	0.49	0/597
4	N	0.42	0/981	0.52	0/1329
5	R	0.49	0/3284	0.54	0/4474
6	P	0.50	0/229	0.59	0/308
All	All	0.44	0/10410	0.52	0/14122

There are no bond length outliers.

There are no bond angle outliers.

There are no chirality outliers.

There are no planarity outliers.

5.2 Too-close contacts [i](#)

In the following table, the Non-H and H(model) columns list the number of non-hydrogen atoms and hydrogen atoms in the chain respectively. The H(added) column lists the number of hydrogen atoms added and optimized by MolProbity. The Clashes column lists the number of clashes within the asymmetric unit, whereas Symm-Clashes lists symmetry-related clashes.

Mol	Chain	Non-H	H(model)	H(added)	Clashes	Symm-Clashes
1	A	2772	0	2662	46	0
2	B	2600	0	2505	34	0
3	G	436	0	448	5	0
4	N	961	0	928	7	0
5	R	3186	0	3138	65	0
6	P	237	0	227	7	0
7	A	15	0	0	0	0

Continued on next page...

Continued from previous page...

Mol	Chain	Non-H	H(model)	H(added)	Clashes	Symm-Clashes
7	B	42	0	0	1	0
7	N	2	0	0	0	0
7	P	1	0	0	0	0
7	R	13	0	0	0	0
All	All	10265	0	9908	154	0

The all-atom clashscore is defined as the number of clashes found per 1000 atoms (including hydrogen atoms). The all-atom clashscore for this structure is 8.

The worst 5 of 154 close contacts within the same asymmetric unit are listed below, sorted by their clash magnitude.

Atom-1	Atom-2	Interatomic distance (Å)	Clash overlap (Å)
5:R:31:SER:HB3	5:R:34:GLU:HG2	1.57	0.86
1:A:51:SER:HA	1:A:249:ALA:HB2	1.56	0.85
1:A:300:LYS:HE3	1:A:305:LYS:HD3	1.59	0.85
5:R:194:VAL:HG23	5:R:197:LYS:HE2	1.62	0.82
4:N:83:MET:HB3	4:N:86:LEU:HD21	1.62	0.80

There are no symmetry-related clashes.

5.3 Torsion angles ⓘ

5.3.1 Protein backbone ⓘ

In the following table, the Percentiles column shows the percent Ramachandran outliers of the chain as a percentile score with respect to all PDB entries followed by that with respect to all EM entries.

The Analysed column shows the number of residues for which the backbone conformation was analysed, and the total number of residues.

Mol	Chain	Analysed	Favoured	Allowed	Outliers	Percentiles	
1	A	343/394 (87%)	330 (96%)	13 (4%)	0	100	100
2	B	336/340 (99%)	322 (96%)	14 (4%)	0	100	100
3	G	55/58 (95%)	54 (98%)	1 (2%)	0	100	100
4	N	124/128 (97%)	123 (99%)	1 (1%)	0	100	100
5	R	379/491 (77%)	365 (96%)	14 (4%)	0	100	100
6	P	27/31 (87%)	25 (93%)	1 (4%)	1 (4%)	2	3

Continued on next page...

Continued from previous page...

Mol	Chain	Analysed	Favoured	Allowed	Outliers	Percentiles
All	All	1264/1442 (88%)	1219 (96%)	44 (4%)	1 (0%)	50 69

All (1) Ramachandran outliers are listed below:

Mol	Chain	Res	Type
6	P	36	ARG

5.3.2 Protein sidechains ⓘ

In the following table, the Percentiles column shows the percent sidechain outliers of the chain as a percentile score with respect to all PDB entries followed by that with respect to all EM entries.

The Analysed column shows the number of residues for which the sidechain conformation was analysed, and the total number of residues.

Mol	Chain	Analysed	Rotameric	Outliers	Percentiles
1	A	284/350 (81%)	280 (99%)	4 (1%)	62 83
2	B	281/283 (99%)	278 (99%)	3 (1%)	70 87
3	G	46/47 (98%)	46 (100%)	0	100 100
4	N	104/106 (98%)	103 (99%)	1 (1%)	73 88
5	R	345/436 (79%)	341 (99%)	4 (1%)	67 86
6	P	23/23 (100%)	23 (100%)	0	100 100
All	All	1083/1245 (87%)	1071 (99%)	12 (1%)	69 87

5 of 12 residues with a non-rotameric sidechain are listed below:

Mol	Chain	Res	Type
4	N	105	ARG
5	R	148	TYR
5	R	420	TRP
5	R	257	PHE
1	A	357	HIS

Sometimes sidechains can be flipped to improve hydrogen bonding and reduce clashes. All (2) such sidechains are listed below:

Mol	Chain	Res	Type
1	A	98	ASN

Continued on next page...

Continued from previous page...

Mol	Chain	Res	Type
5	R	263	GLN

5.3.3 RNA ⓘ

There are no RNA molecules in this entry.

5.4 Non-standard residues in protein, DNA, RNA chains ⓘ

2 non-standard protein/DNA/RNA residues are modelled in this entry.

In the following table, the Counts columns list the number of bonds (or angles) for which Mogul statistics could be retrieved, the number of bonds (or angles) that are observed in the model and the number of bonds (or angles) that are defined in the Chemical Component Dictionary. The Link column lists molecule types, if any, to which the group is linked. The Z score for a bond length (or angle) is the number of standard deviations the observed value is removed from the expected value. A bond length (or angle) with $|Z| > 2$ is considered an outlier worth inspection. RMSZ is the root-mean-square of all Z scores of the bond lengths (or angles).

Mol	Type	Chain	Res	Link	Bond lengths			Bond angles		
					Counts	RMSZ	$\# Z > 2$	Counts	RMSZ	$\# Z > 2$
6	AIB	P	35	6	1,5,6	1.34	0	0,7,9	-	-
6	AIB	P	8	6	1,5,6	1.55	0	0,7,9	-	-

In the following table, the Chirals column lists the number of chiral outliers, the number of chiral centers analysed, the number of these observed in the model and the number defined in the Chemical Component Dictionary. Similar counts are reported in the Torsion and Rings columns. '-' means no outliers of that kind were identified.

Mol	Type	Chain	Res	Link	Chirals	Torsions	Rings
6	AIB	P	35	6	-	0/2/3/6	-
6	AIB	P	8	6	-	0/2/3/6	-

There are no bond length outliers.

There are no bond angle outliers.

There are no chirality outliers.

There are no torsion outliers.

There are no ring outliers.

1 monomer is involved in 2 short contacts:

Mol	Chain	Res	Type	Clashes	Symm-Clashes
6	P	8	AIB	2	0

5.5 Carbohydrates [i](#)

There are no oligosaccharides in this entry.

5.6 Ligand geometry [i](#)

There are no ligands in this entry.

5.7 Other polymers [i](#)

There are no such residues in this entry.

5.8 Polymer linkage issues [i](#)

There are no chain breaks in this entry.

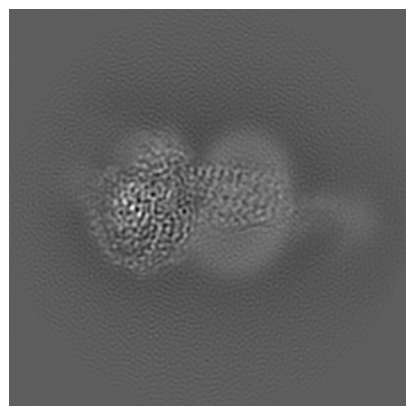
6 Map visualisation [i](#)

This section contains visualisations of the EMDB entry EMD-22883. These allow visual inspection of the internal detail of the map and identification of artifacts.

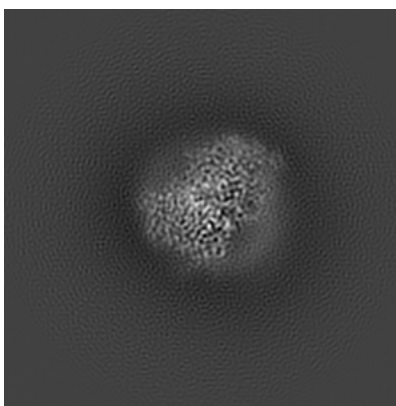
Images derived from a raw map, generated by summing the deposited half-maps, are presented below the corresponding image components of the primary map to allow further visual inspection and comparison with those of the primary map.

6.1 Orthogonal projections [i](#)

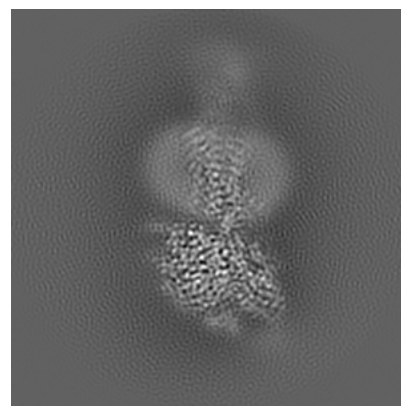
6.1.1 Primary map



X

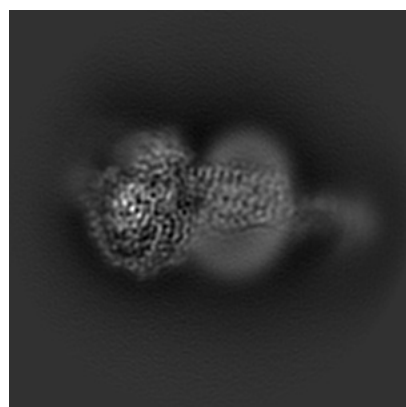


Y

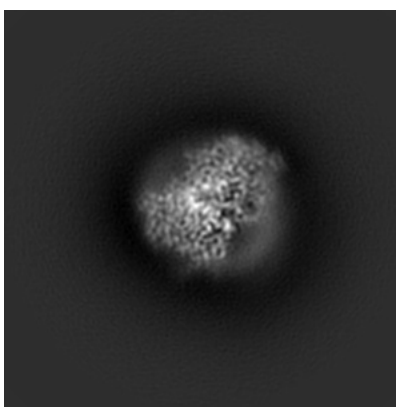


Z

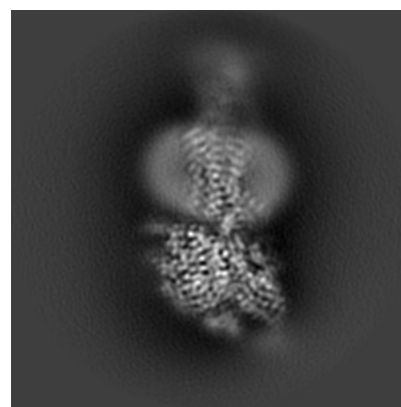
6.1.2 Raw map



X



Y

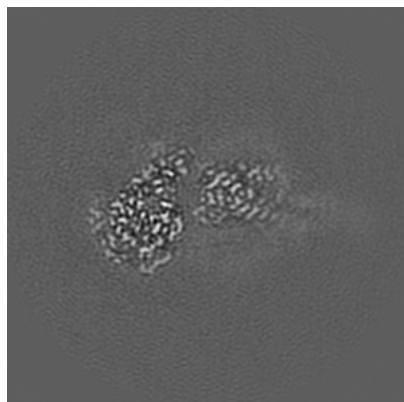


Z

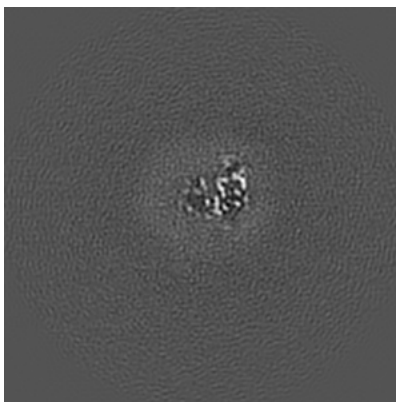
The images above show the map projected in three orthogonal directions.

6.2 Central slices [i](#)

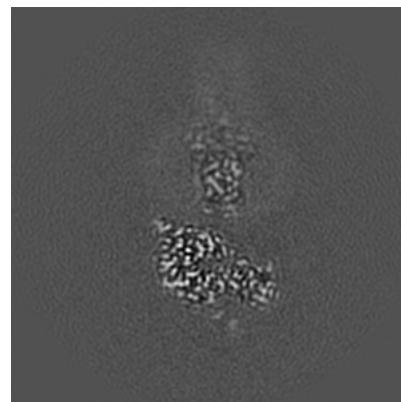
6.2.1 Primary map



X Index: 88

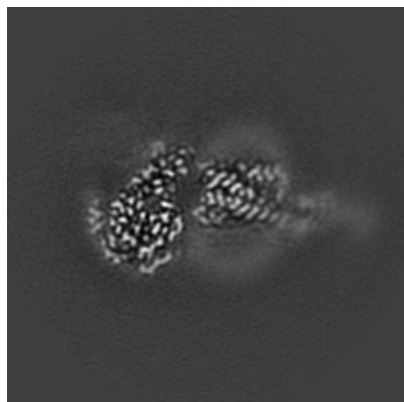


Y Index: 88

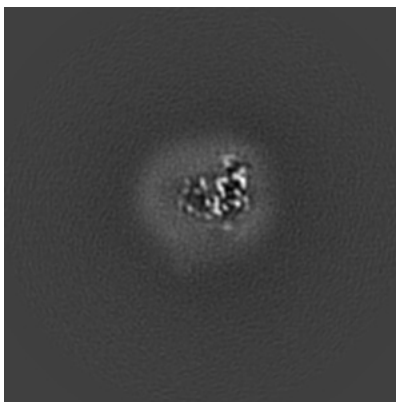


Z Index: 88

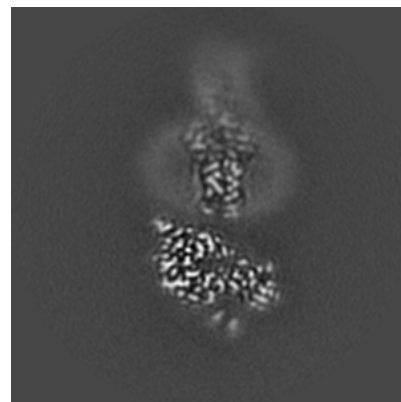
6.2.2 Raw map



X Index: 88



Y Index: 88

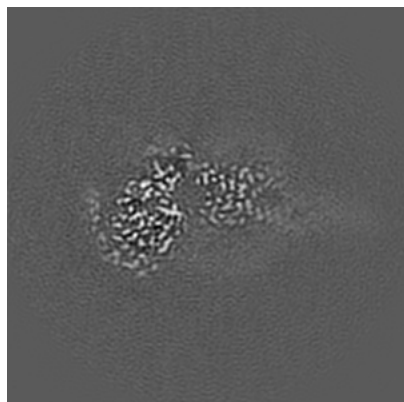


Z Index: 88

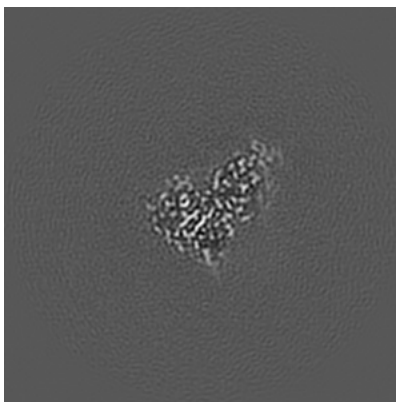
The images above show central slices of the map in three orthogonal directions.

6.3 Largest variance slices [i](#)

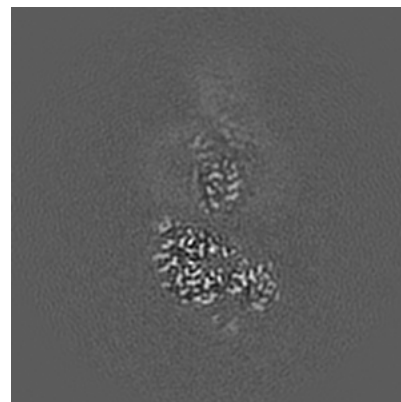
6.3.1 Primary map



X Index: 90

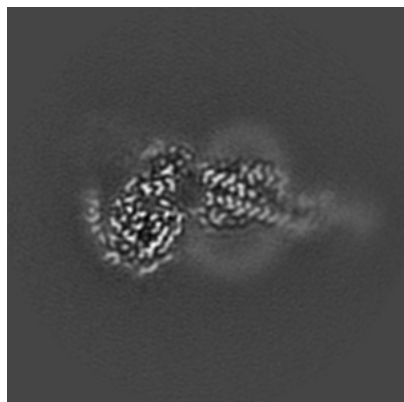


Y Index: 66

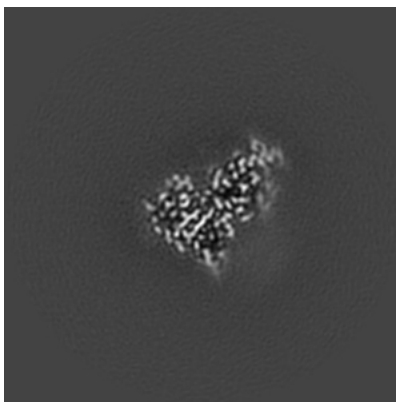


Z Index: 89

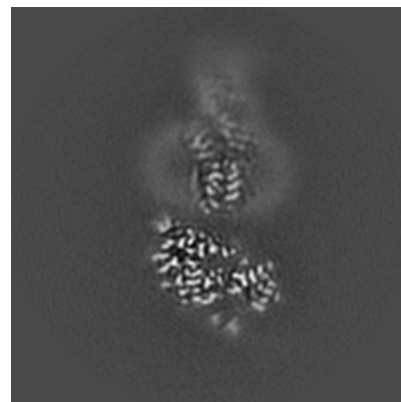
6.3.2 Raw map



X Index: 89



Y Index: 66

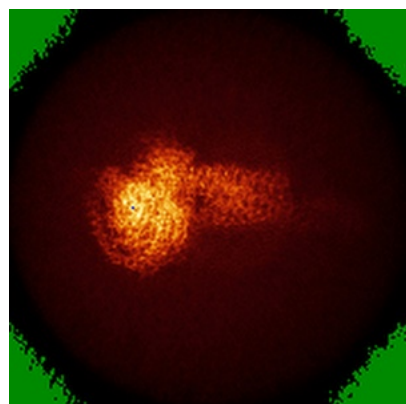


Z Index: 89

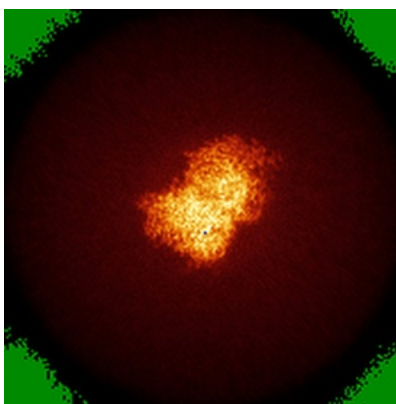
The images above show the largest variance slices of the map in three orthogonal directions.

6.4 Orthogonal standard-deviation projections (False-color) [i](#)

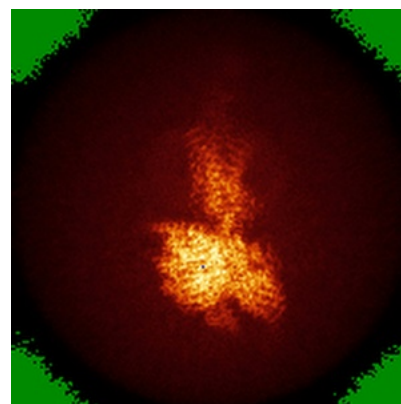
6.4.1 Primary map



X

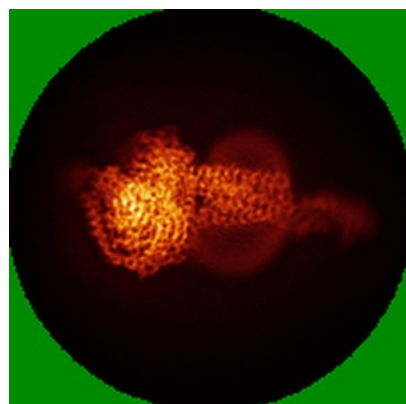


Y

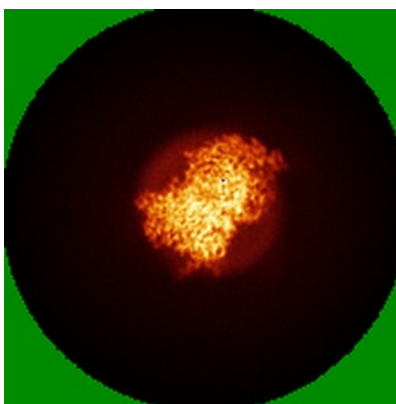


Z

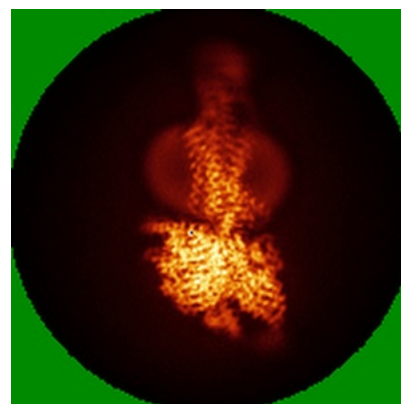
6.4.2 Raw map



X



Y

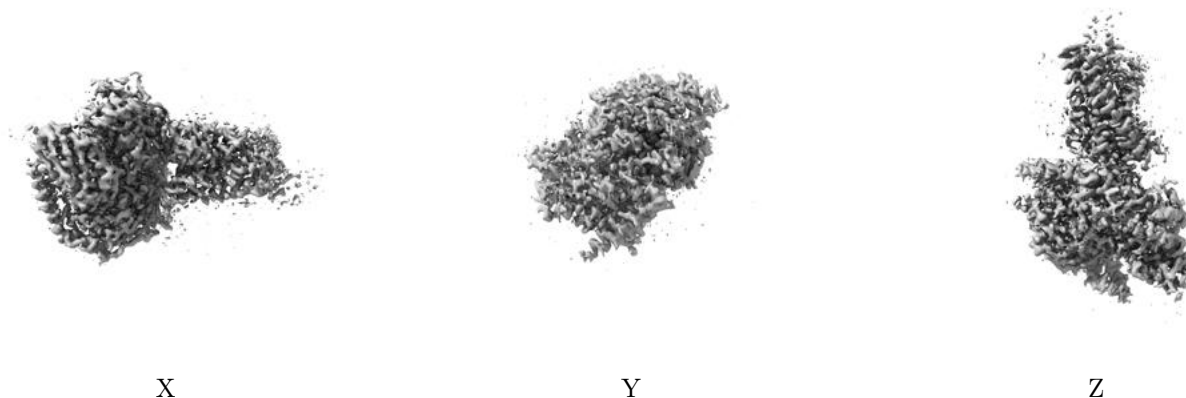


Z

The images above show the map standard deviation projections with false color in three orthogonal directions. Minimum values are shown in green, max in blue, and dark to light orange shades represent small to large values respectively.

6.5 Orthogonal surface views [i](#)

6.5.1 Primary map



The images above show the 3D surface view of the map at the recommended contour level 0.046. These images, in conjunction with the slice images, may facilitate assessment of whether an appropriate contour level has been provided.

6.5.2 Raw map



These images show the 3D surface of the raw map. The raw map's contour level was selected so that its surface encloses the same volume as the primary map does at its recommended contour level.

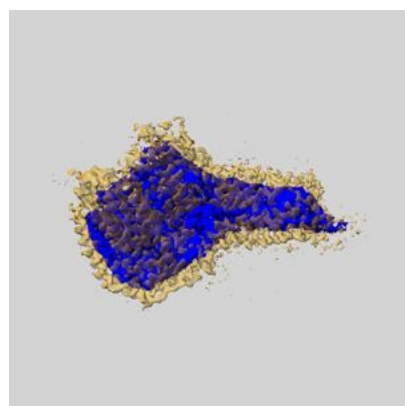
6.6 Mask visualisation [i](#)

This section shows the 3D surface view of the primary map at 50% transparency overlaid with the specified mask at 0% transparency

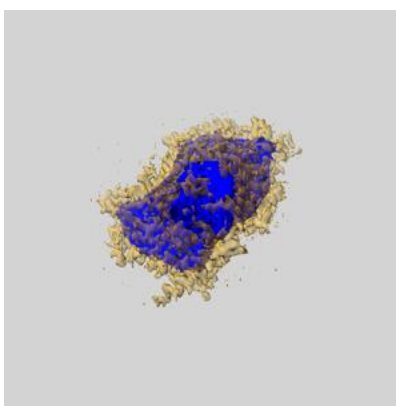
A mask typically either:

- Encompasses the whole structure
- Separates out a domain, a functional unit, a monomer or an area of interest from a larger structure

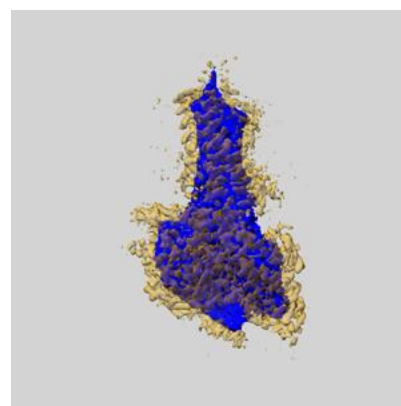
6.6.1 emd_22883_msk_1.map [i](#)



X



Y

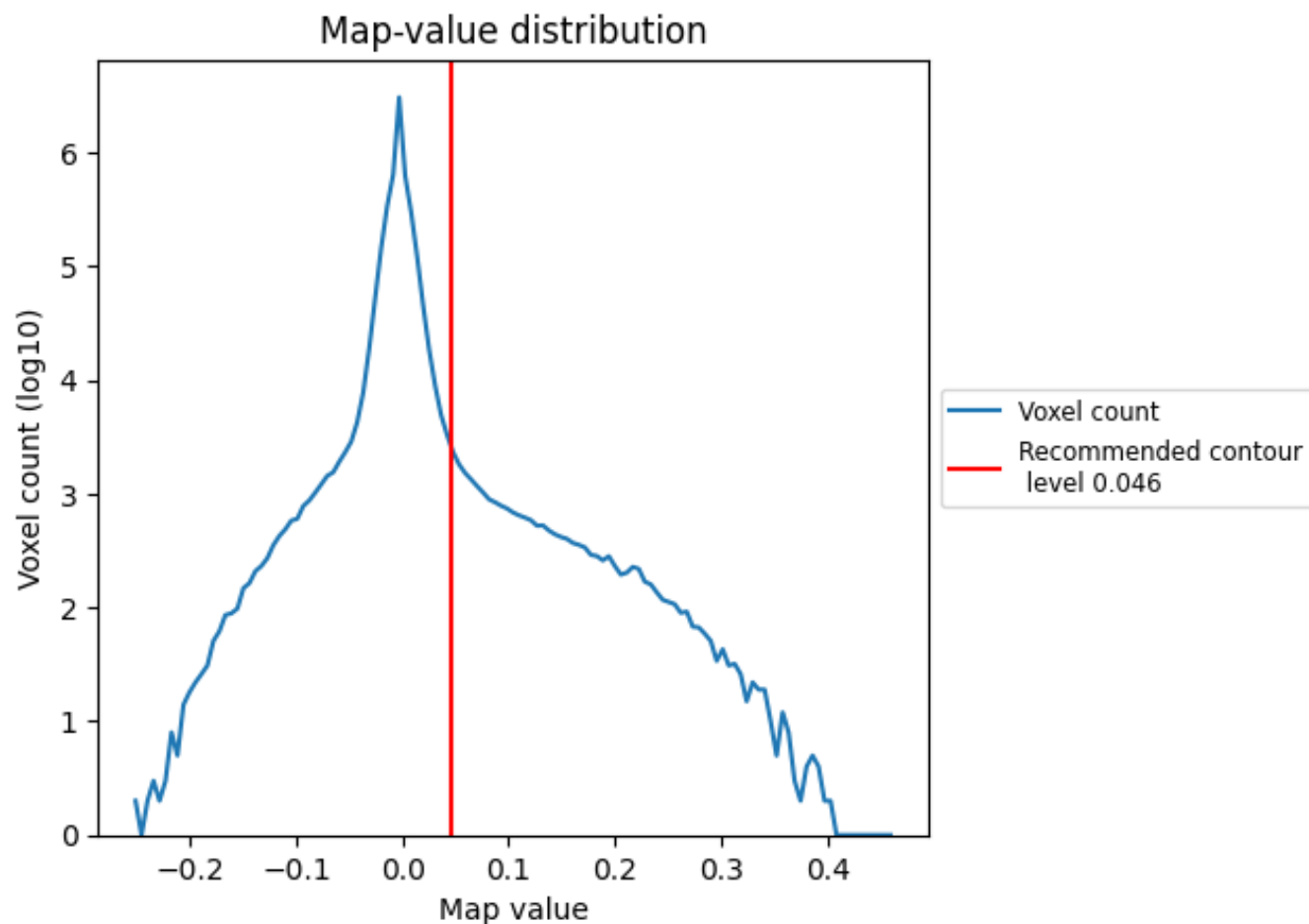


Z

7 Map analysis [i](#)

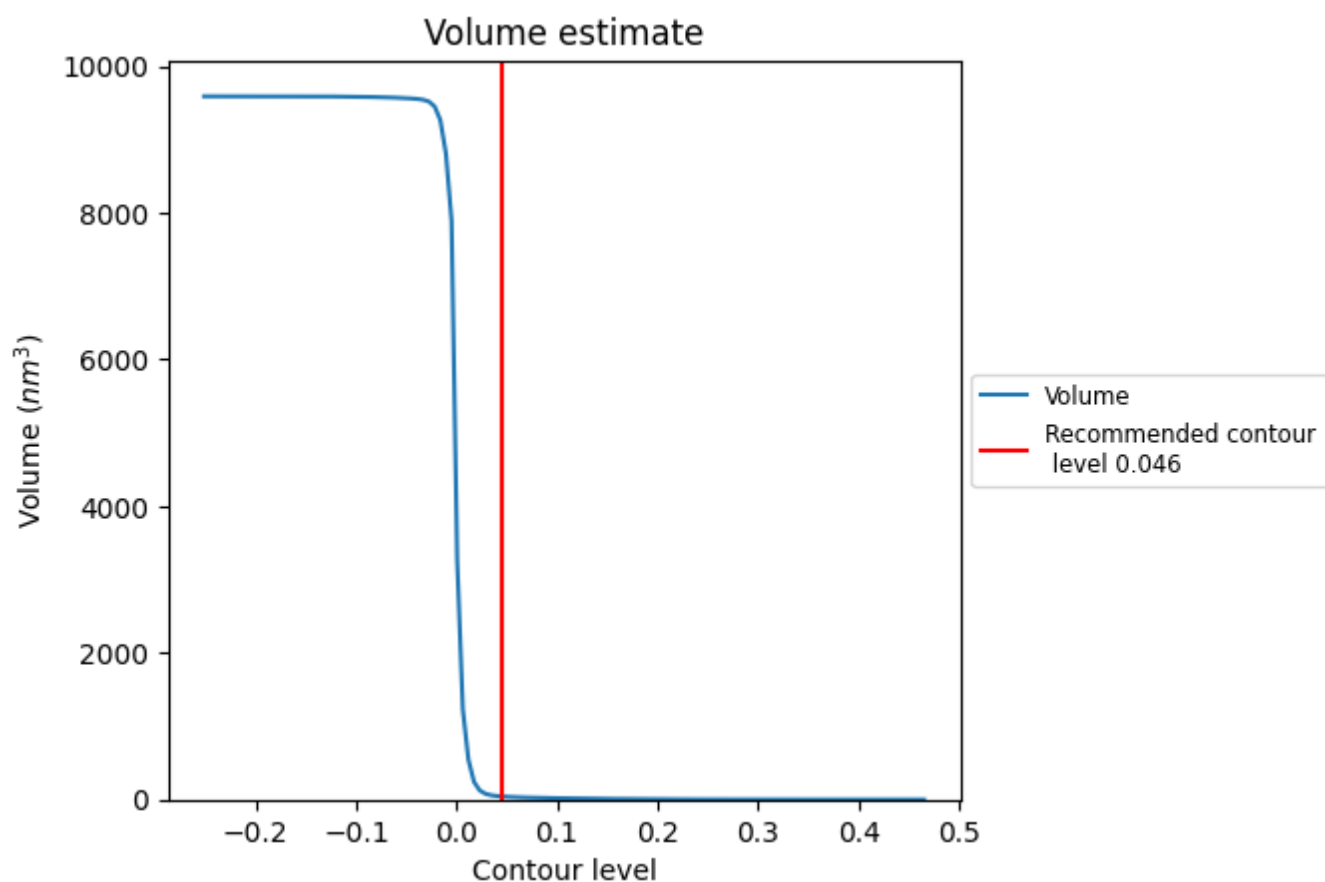
This section contains the results of statistical analysis of the map.

7.1 Map-value distribution [i](#)



The map-value distribution is plotted in 128 intervals along the x-axis. The y-axis is logarithmic. A spike in this graph at zero usually indicates that the volume has been masked.

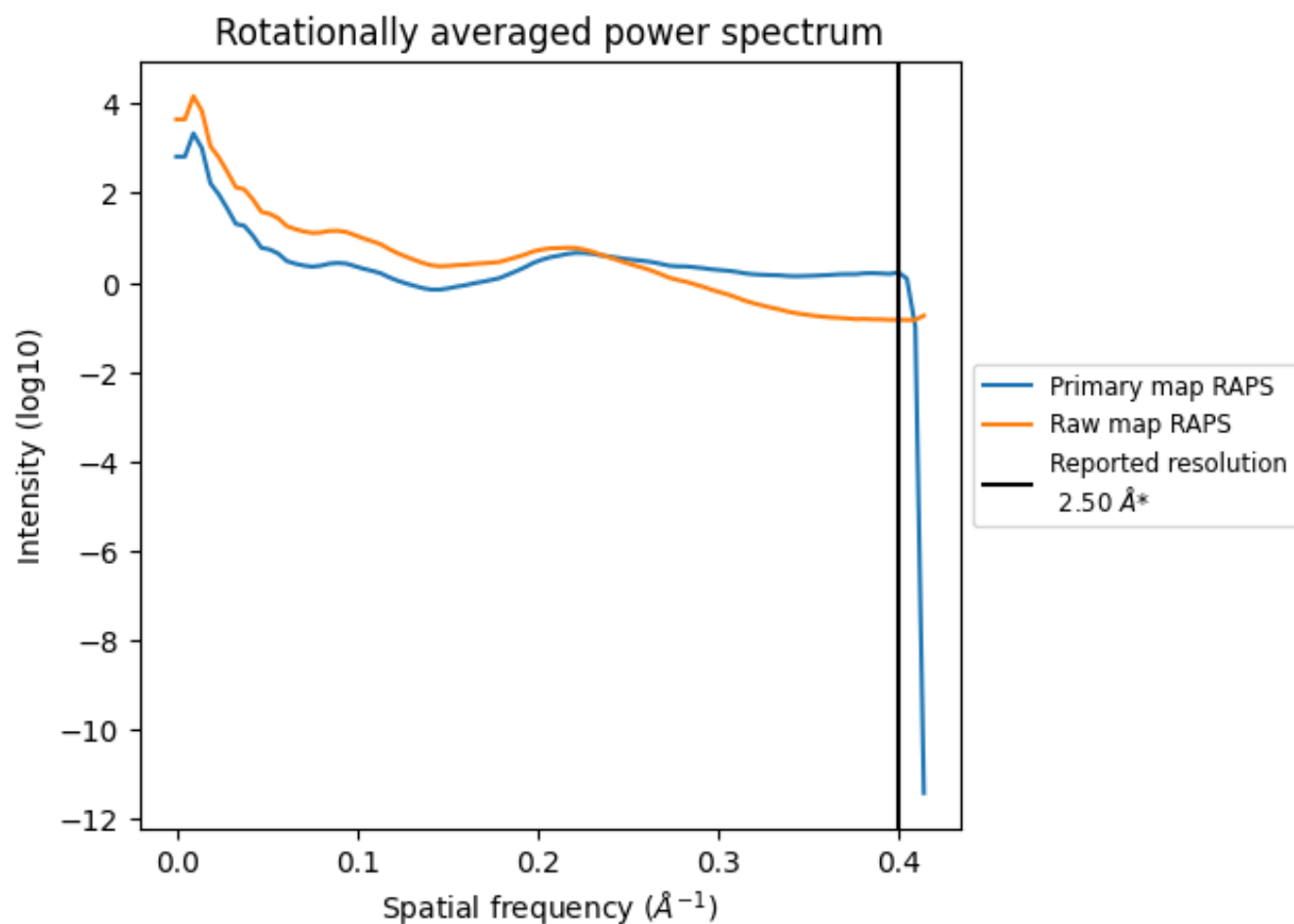
7.2 Volume estimate [i](#)



The volume at the recommended contour level is 41 nm³; this corresponds to an approximate mass of 37 kDa.

The volume estimate graph shows how the enclosed volume varies with the contour level. The recommended contour level is shown as a vertical line and the intersection between the line and the curve gives the volume of the enclosed surface at the given level.

7.3 Rotationally averaged power spectrum ⓘ

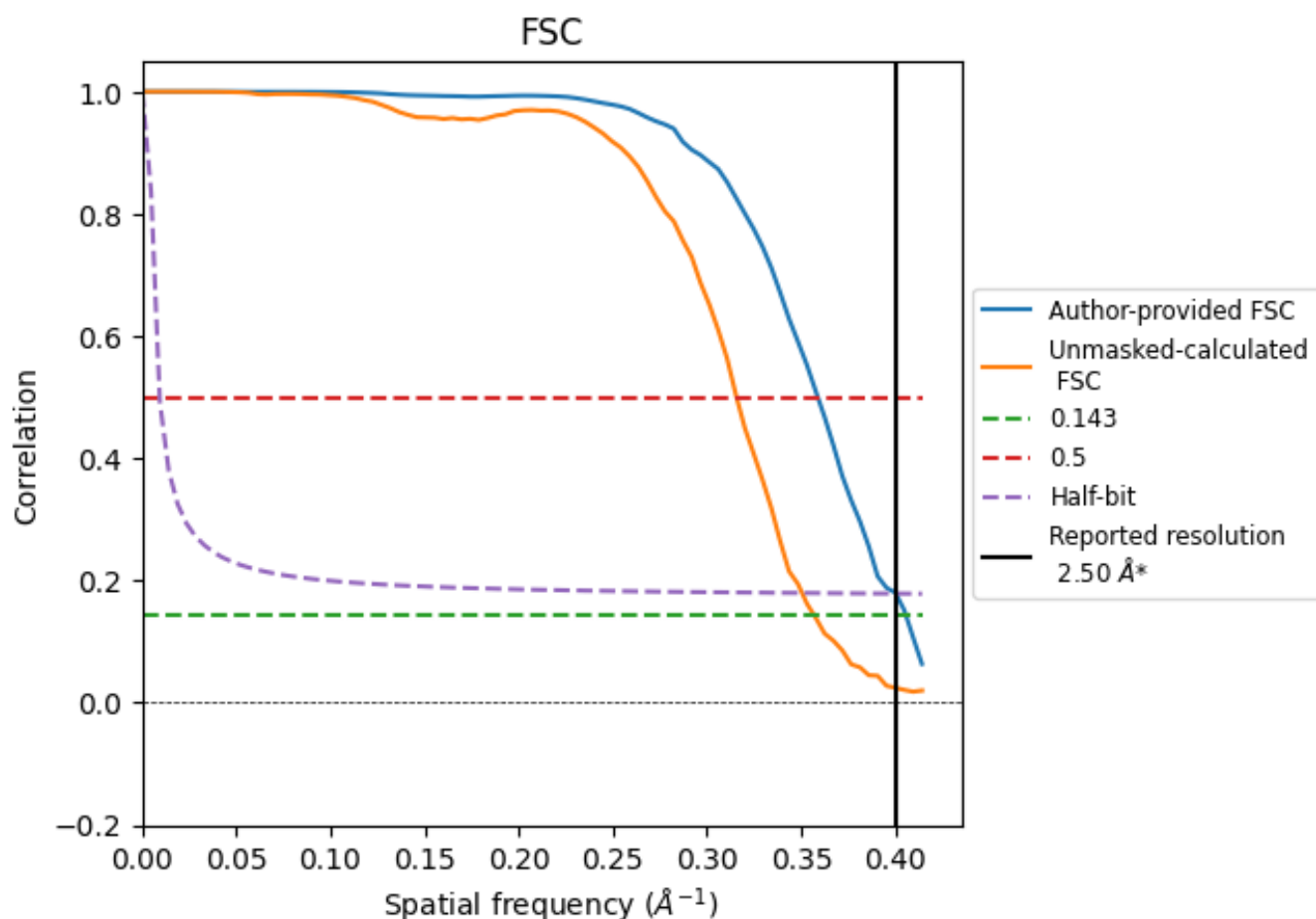


*Reported resolution corresponds to spatial frequency of 0.400 Å⁻¹

8 Fourier-Shell correlation [i](#)

Fourier-Shell Correlation (FSC) is the most commonly used method to estimate the resolution of single-particle and subtomogram-averaged maps. The shape of the curve depends on the imposed symmetry, mask and whether or not the two 3D reconstructions used were processed from a common reference. The reported resolution is shown as a black line. A curve is displayed for the half-bit criterion in addition to lines showing the 0.143 gold standard cut-off and 0.5 cut-off.

8.1 FSC [i](#)



*Reported resolution corresponds to spatial frequency of 0.400 \AA^{-1}

8.2 Resolution estimates [i](#)

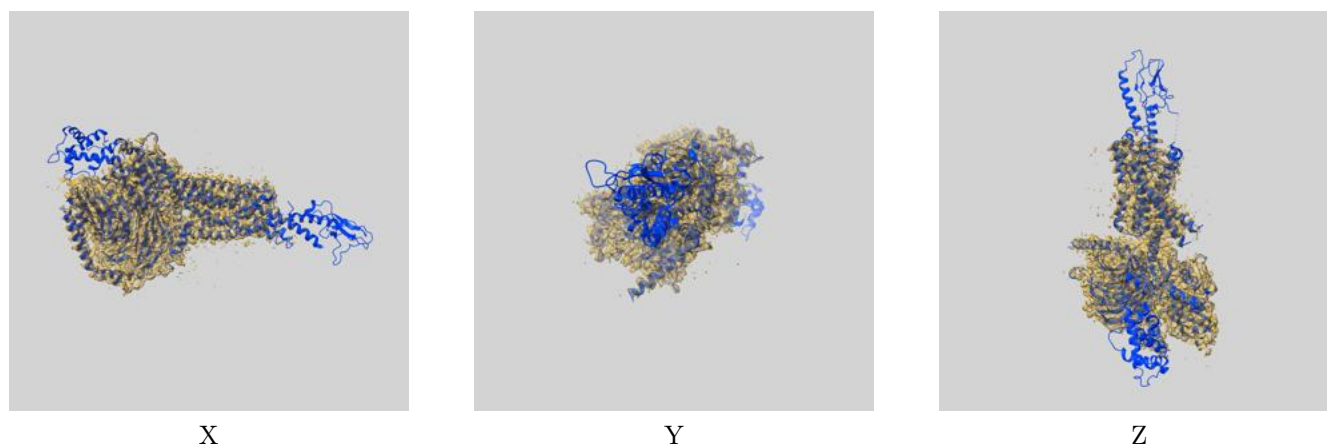
Resolution estimate (Å)	Estimation criterion (FSC cut-off)		
	0.143	0.5	Half-bit
Reported by author	2.50	-	-
Author-provided FSC curve	2.46	2.79	2.50
Unmasked-calculated*	2.80	3.17	2.85

*Resolution estimate based on FSC curve calculated by comparison of deposited half-maps. The value from deposited half-maps intersecting FSC 0.143 CUT-OFF 2.80 differs from the reported value 2.5 by more than 10 %

9 Map-model fit [i](#)

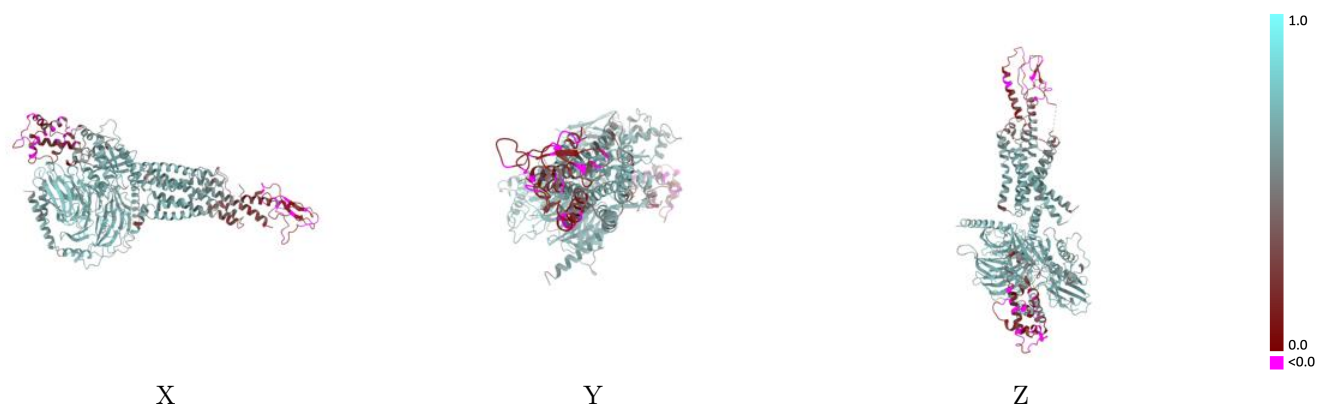
This section contains information regarding the fit between EMDB map EMD-22883 and PDB model 7KI1. Per-residue inclusion information can be found in section 3 on page 7.

9.1 Map-model overlay [i](#)



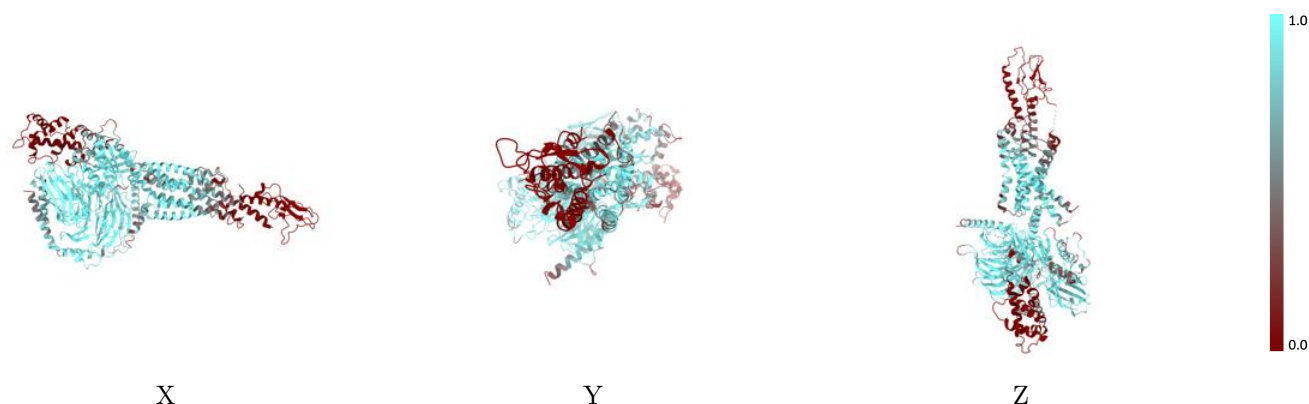
The images above show the 3D surface view of the map at the recommended contour level 0.046 at 50% transparency in yellow overlaid with a ribbon representation of the model coloured in blue. These images allow for the visual assessment of the quality of fit between the atomic model and the map.

9.2 Q-score mapped to coordinate model [i](#)



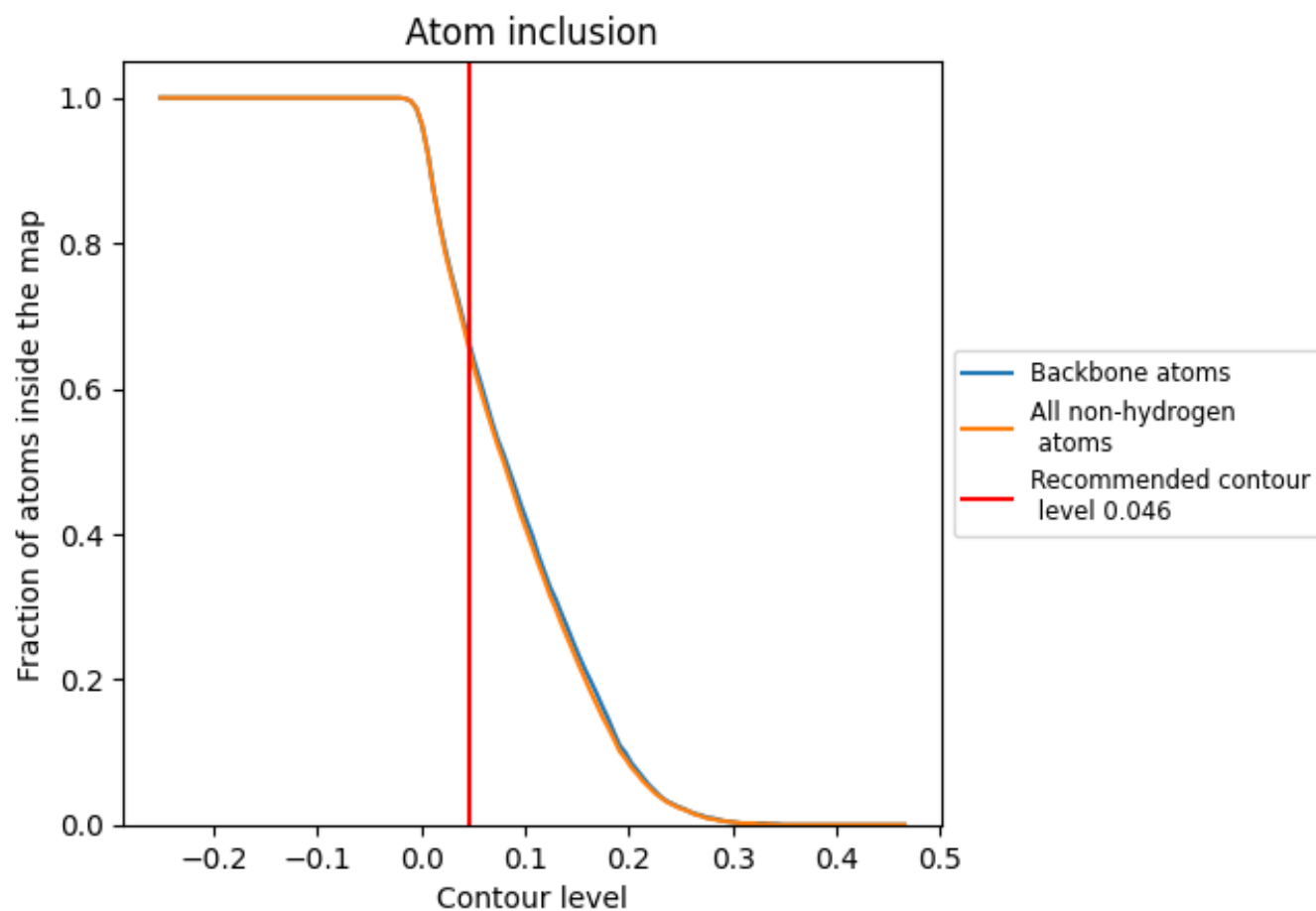
The images above show the model with each residue coloured according to its Q-score. This shows their resolvability in the map with higher Q-score values reflecting better resolvability. Please note: Q-score is calculating the resolvability of atoms, and thus high values are only expected at resolutions at which atoms can be resolved. Low Q-score values may therefore be expected for many entries.

9.3 Atom inclusion mapped to coordinate model [i](#)



The images above show the model with each residue coloured according to its atom inclusion. This shows to what extent they are inside the map at the recommended contour level (0.046).

9.4 Atom inclusion [i](#)



At the recommended contour level, 66% of all backbone atoms, 66% of all non-hydrogen atoms, are inside the map.

9.5 Map-model fit summary ⓘ

The table lists the average atom inclusion at the recommended contour level (0.046) and Q-score for the entire model and for each chain.

Chain	Atom inclusion	Q-score
All	<div></div> 0.6550	<div></div> 0.5350
A	<div></div> 0.5380	<div></div> 0.4690
B	<div></div> 0.9220	<div></div> 0.6670
G	<div></div> 0.7440	<div></div> 0.6180
N	<div></div> 0.9320	<div></div> 0.6710
P	<div></div> 0.2880	<div></div> 0.4050
R	<div></div> 0.4840	<div></div> 0.4410

1.0

0.0

<0.0