



# wwPDB X-ray Structure Validation Summary Report ⓘ

Oct 22, 2024 – 01:01 AM EDT

PDB ID : 3L8H  
Title : Crystal Structure of D,D-heptose 1,7-bisphosphate phosphatase from *B. bronchiseptica* complexed with magnesium and phosphate  
Authors : Nguyen, H.; Peisach, E.; Allen, K.N.  
Deposited on : 2009-12-31  
Resolution : 1.68 Å(reported)

This is a wwPDB X-ray Structure Validation Summary Report for a publicly released PDB entry.

We welcome your comments at [validation@mail.wwpdb.org](mailto:validation@mail.wwpdb.org)

A user guide is available at

<https://www.wwpdb.org/validation/2017/XrayValidationReportHelp>

with specific help available everywhere you see the ⓘ symbol.

The types of validation reports are described at

<http://www.wwpdb.org/validation/2017/FAQs#types>.

---

The following versions of software and data (see [references ⓘ](#)) were used in the production of this report:

MolProbity	:	4.02b-467
Mogul	:	2022.3.0, CSD as543be (2022)
Xtriage (Phenix)	:	1.20.1
EDS	:	3.0
Percentile statistics	:	20231227.v01 (using entries in the PDB archive December 27th 2023)
CCP4	:	9.0.003 (Gargrove)
Density-Fitness	:	1.0.11
Ideal geometry (proteins)	:	Engh & Huber (2001)
Ideal geometry (DNA, RNA)	:	Parkinson et al. (1996)
Validation Pipeline (wwPDB-VP)	:	2.39

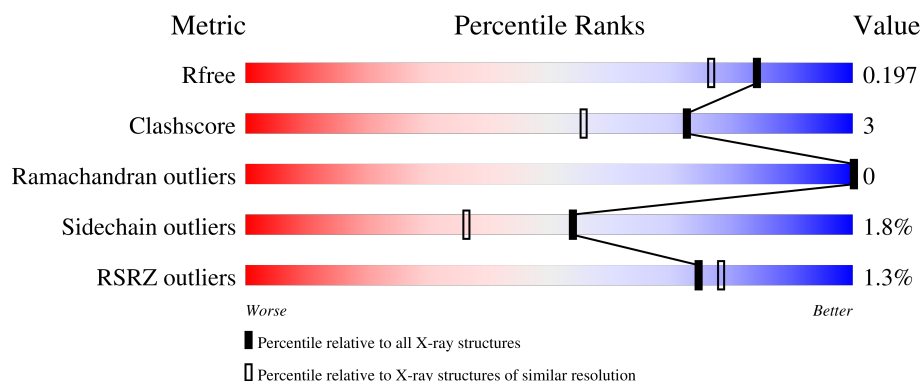
# 1 Overall quality at a glance

The following experimental techniques were used to determine the structure:

*X-RAY DIFFRACTION*

The reported resolution of this entry is 1.68 Å.

Percentile scores (ranging between 0-100) for global validation metrics of the entry are shown in the following graphic. The table shows the number of entries on which the scores are based.



Metric	Whole archive (#Entries)	Similar resolution (#Entries, resolution range(Å))
$R_{free}$	164625	8422 (1.70-1.66)
Clashscore	180529	1005 (1.68-1.68)
Ramachandran outliers	177936	9065 (1.70-1.66)
Sidechain outliers	177891	9064 (1.70-1.66)
RSRZ outliers	164620	8421 (1.70-1.66)

The table below summarises the geometric issues observed across the polymeric chains and their fit to the electron density. The red, orange, yellow and green segments of the lower bar indicate the fraction of residues that contain outliers for  $\geq 3$ , 2, 1 and 0 types of geometric quality criteria respectively. A grey segment represents the fraction of residues that are not modelled. The numeric value for each fraction is indicated below the corresponding segment, with a dot representing fractions  $\leq 5\%$ . The upper red bar (where present) indicates the fraction of residues that have poor fit to the electron density. The numeric value is given above the bar.

Mol	Chain	Length	Quality of chain
1	A	179	<div> <div style="width: 100%; height: 10px; background-color: red; position: relative;"> <span style="position: absolute; top: -10px; left: 0;">%</span> </div> <div style="width: 93%; height: 10px; background-color: green; position: relative;"> <span style="position: absolute; top: -10px; left: 0;">93%</span> </div> <div style="width: 6%; height: 10px; background-color: yellow; position: relative;"> <span style="position: absolute; top: -10px; left: 0;">6%</span> </div> </div>
1	B	179	<div> <div style="width: 100%; height: 10px; background-color: red; position: relative;"> <span style="position: absolute; top: -10px; left: 0;">2%</span> </div> <div style="width: 97%; height: 10px; background-color: green; position: relative;"> <span style="position: absolute; top: -10px; left: 0;">97%</span> </div> <div style="width: 3%; height: 10px; background-color: yellow; position: relative;"> <span style="position: absolute; top: -10px; left: 0;">.</span> </div> </div>
1	C	179	<div> <div style="width: 100%; height: 10px; background-color: red; position: relative;"> <span style="position: absolute; top: -10px; left: 0;">2%</span> </div> <div style="width: 91%; height: 10px; background-color: green; position: relative;"> <span style="position: absolute; top: -10px; left: 0;">91%</span> </div> <div style="width: 9%; height: 10px; background-color: yellow; position: relative;"> <span style="position: absolute; top: -10px; left: 0;">9%</span> </div> </div>
1	D	179	<div> <div style="width: 100%; height: 10px; background-color: red; position: relative;"> <span style="position: absolute; top: -10px; left: 0;">%</span> </div> <div style="width: 92%; height: 10px; background-color: green; position: relative;"> <span style="position: absolute; top: -10px; left: 0;">92%</span> </div> <div style="width: 8%; height: 10px; background-color: yellow; position: relative;"> <span style="position: absolute; top: -10px; left: 0;">8%</span> </div> </div>

## 2 Entry composition [i](#)

There are 8 unique types of molecules in this entry. The entry contains 6082 atoms, of which 0 are hydrogens and 0 are deuteriums.

In the tables below, the ZeroOcc column contains the number of atoms modelled with zero occupancy, the AltConf column contains the number of residues with at least one atom in alternate conformation and the Trace column contains the number of residues modelled with at most 2 atoms.

- Molecule 1 is a protein called Putative haloacid dehalogenase-like hydrolase.

Mol	Chain	Residues	Atoms						ZeroOcc	AltConf	Trace
1	A	179	Total	C	N	O	S	Se	0	0	0
			1332	827	241	254	5	5			
1	B	179	Total	C	N	O	S	Se	0	0	0
			1332	827	241	254	5	5			
1	C	179	Total	C	N	O	S	Se	0	0	0
			1332	827	241	254	5	5			
1	D	179	Total	C	N	O	S	Se	0	0	0
			1332	827	241	254	5	5			

- Molecule 2 is MAGNESIUM ION (three-letter code: MG) (formula: Mg).

Mol	Chain	Residues	Atoms		ZeroOcc	AltConf
2	A	2	Total	Mg	0	0
			2	2		
2	B	1	Total	Mg	0	0
			1	1		
2	C	1	Total	Mg	0	0
			1	1		
2	D	1	Total	Mg	0	0
			1	1		

- Molecule 3 is ZINC ION (three-letter code: ZN) (formula: Zn).

Mol	Chain	Residues	Atoms		ZeroOcc	AltConf
3	A	1	Total	Zn	0	0
			1	1		
3	B	1	Total	Zn	0	0
			1	1		
3	C	1	Total	Zn	0	0
			1	1		
3	D	1	Total	Zn	0	0
			1	1		

- Molecule 4 is PHOSPHATE ION (three-letter code: PO4) (formula:  $\text{O}_4\text{P}$ ).



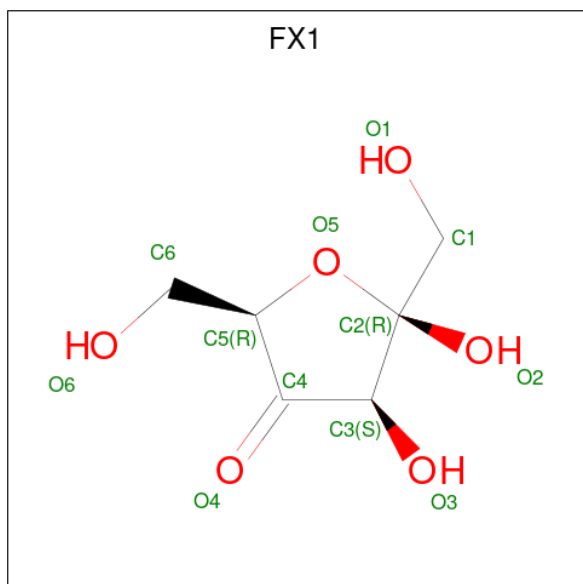
Mol	Chain	Residues	Atoms			ZeroOcc	AltConf
4	A	1	Total	O	P	0	0
			5	4	1		
4	B	1	Total	O	P	0	0
			5	4	1		
4	B	1	Total	O	P	0	0
			5	4	1		
4	C	1	Total	O	P	0	0
			5	4	1		
4	D	1	Total	O	P	0	0
			5	4	1		

- Molecule 5 is FORMIC ACID (three-letter code: FMT) (formula:  $\text{CH}_2\text{O}_2$ ).



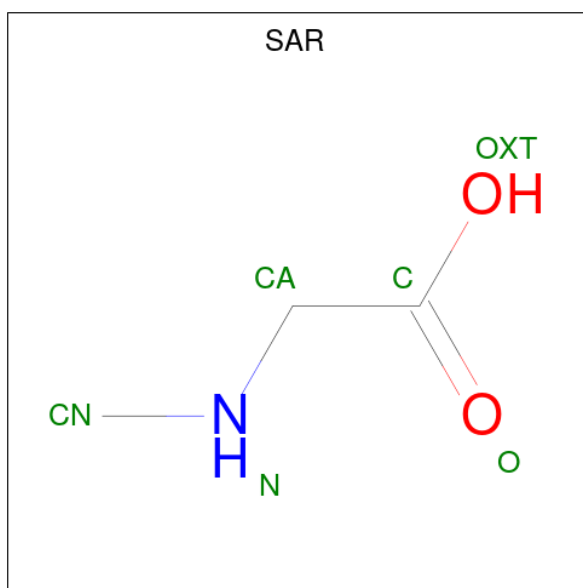
Mol	Chain	Residues	Atoms			ZeroOcc	AltConf
5	A	1	Total	C	O	0	0
			3	1	2		
5	D	1	Total	C	O	0	0
			3	1	2		

- Molecule 6 is beta-D-threo-hexo-2,4-diulo-2,5-furanose (three-letter code: FX1) (formula:  $C_6H_{10}O_6$ ).



Mol	Chain	Residues	Atoms			ZeroOcc	AltConf
6	C	1	Total	C	O	0	0
			12	6	6		

- Molecule 7 is SARCOSINE (three-letter code: SAR) (formula:  $C_3H_7NO_2$ ).



Mol	Chain	Residues	Atoms				ZeroOcc	AltConf
7	D	1	Total	C	N	O	0	0
			6	3	1	2		

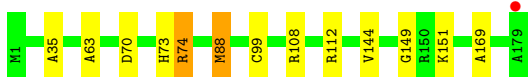
- Molecule 8 is water.

Mol	Chain	Residues	Atoms		ZeroOcc	AltConf
8	A	219	Total	O	0	0
			219	219		
8	B	197	Total	O	0	0
			197	197		
8	C	146	Total	O	0	0
			146	146		
8	D	134	Total	O	0	0
			134	134		

### 3 Residue-property plots [i](#)

These plots are drawn for all protein, RNA, DNA and oligosaccharide chains in the entry. The first graphic for a chain summarises the proportions of the various outlier classes displayed in the second graphic. The second graphic shows the sequence view annotated by issues in geometry and electron density. Residues are color-coded according to the number of geometric quality criteria for which they contain at least one outlier: green = 0, yellow = 1, orange = 2 and red = 3 or more. A red dot above a residue indicates a poor fit to the electron density ( $RSRZ > 2$ ). Stretches of 2 or more consecutive residues without any outlier are shown as a green connector. Residues present in the sample, but not in the model, are shown in grey.

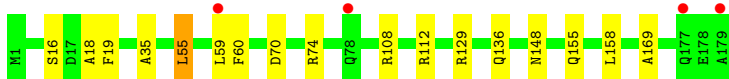
- Molecule 1: Putative haloacid dehalogenase-like hydrolase



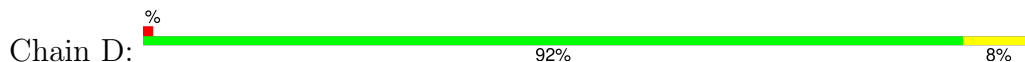
- Molecule 1: Putative haloacid dehalogenase-like hydrolase



- Molecule 1: Putative haloacid dehalogenase-like hydrolase



- Molecule 1: Putative haloacid dehalogenase-like hydrolase



## 4 Data and refinement statistics

Property	Value	Source
Space group	P 1	Depositor
Cell constants a, b, c, $\alpha$ , $\beta$ , $\gamma$	38.07Å 58.39Å 85.72Å 90.48° 97.54° 92.02°	Depositor
Resolution (Å)	29.17 – 1.68 29.17 – 1.68	Depositor EDS
% Data completeness (in resolution range)	88.0 (29.17-1.68) 91.2 (29.17-1.68)	Depositor EDS
$R_{merge}$	0.06	Depositor
$R_{sym}$	(Not available)	Depositor
$\langle I/\sigma(I) \rangle$ <sup>1</sup>	2.48 (at 1.68Å)	Xtriage
Refinement program	PHENIX 1.5_2	Depositor
R, $R_{free}$	0.172 , 0.200 0.167 , 0.197	Depositor DCC
$R_{free}$ test set	7538 reflections (9.57%)	wwPDB-VP
Wilson B-factor (Å <sup>2</sup> )	14.1	Xtriage
Anisotropy	0.251	Xtriage
Bulk solvent $k_{sol}$ (e/Å <sup>3</sup> ), $B_{sol}$ (Å <sup>2</sup> )	0.39 , 47.0	EDS
L-test for twinning <sup>2</sup>	$\langle  L  \rangle = 0.50$ , $\langle L^2 \rangle = 0.33$	Xtriage
Estimated twinning fraction	0.011 for -h,k,-l	Xtriage
$F_o, F_c$ correlation	0.96	EDS
Total number of atoms	6082	wwPDB-VP
Average B, all atoms (Å <sup>2</sup> )	20.0	wwPDB-VP

Xtriage's analysis on translational NCS is as follows: *The largest off-origin peak in the Patterson function is 5.77% of the height of the origin peak. No significant pseudotranslation is detected.*

<sup>1</sup>Intensities estimated from amplitudes.

<sup>2</sup>Theoretical values of  $\langle |L| \rangle$ ,  $\langle L^2 \rangle$  for acentric reflections are 0.5, 0.333 respectively for untwinned datasets, and 0.375, 0.2 for perfectly twinned datasets.



## 5 Model quality [i](#)

### 5.1 Standard geometry [i](#)

Bond lengths and bond angles in the following residue types are not validated in this section: SAR, MG, PO4, FX1, FMT, ZN

The Z score for a bond length (or angle) is the number of standard deviations the observed value is removed from the expected value. A bond length (or angle) with  $|Z| > 5$  is considered an outlier worth inspection. RMSZ is the root-mean-square of all Z scores of the bond lengths (or angles).

Mol	Chain	Bond lengths		Bond angles	
		RMSZ	$\# Z  > 5$	RMSZ	$\# Z  > 5$
1	A	0.43	0/1350	0.59	0/1827
1	B	0.40	0/1350	0.58	0/1827
1	C	0.35	0/1350	0.53	0/1827
1	D	0.33	0/1350	0.50	0/1827
All	All	0.38	0/5400	0.55	0/7308

There are no bond length outliers.

There are no bond angle outliers.

There are no chirality outliers.

There are no planarity outliers.

### 5.2 Too-close contacts [i](#)

In the following table, the Non-H and H(model) columns list the number of non-hydrogen atoms and hydrogen atoms in the chain respectively. The H(added) column lists the number of hydrogen atoms added and optimized by MolProbity. The Clashes column lists the number of clashes within the asymmetric unit, whereas Symm-Clashes lists symmetry-related clashes.

Mol	Chain	Non-H	H(model)	H(added)	Clashes	Symm-Clashes
1	A	1332	0	1322	10	0
1	B	1332	0	1322	2	0
1	C	1332	0	1322	11	0
1	D	1332	0	1322	11	0
2	A	2	0	0	0	0
2	B	1	0	0	0	0
2	C	1	0	0	0	0
2	D	1	0	0	0	0
3	A	1	0	0	0	0

*Continued on next page...*

*Continued from previous page...*

Mol	Chain	Non-H	H(model)	H(added)	Clashes	Symm-Clashes
3	B	1	0	0	0	0
3	C	1	0	0	0	0
3	D	1	0	0	0	0
4	A	5	0	0	0	0
4	B	10	0	0	0	0
4	C	5	0	0	0	0
4	D	5	0	0	0	0
5	A	3	0	1	0	0
5	D	3	0	1	0	0
6	C	12	0	10	4	0
7	D	6	0	6	1	0
8	A	219	0	0	3	0
8	B	197	0	0	1	0
8	C	146	0	0	1	0
8	D	134	0	0	1	0
All	All	6082	0	5306	33	0

The all-atom clashscore is defined as the number of clashes found per 1000 atoms (including hydrogen atoms). The all-atom clashscore for this structure is 3.

The worst 5 of 33 close contacts within the same asymmetric unit are listed below, sorted by their clash magnitude.

Atom-1	Atom-2	Interatomic distance (Å)	Clash overlap (Å)
1:D:33:LEU:HB3	1:D:79:MSE:HE1	1.76	0.67
1:D:16:SER:O	7:D:2008:SAR:HA3	1.98	0.64
1:D:33:LEU:CB	1:D:79:MSE:HE1	2.28	0.64
1:A:74:ARG:NH1	8:A:577:HOH:O	2.33	0.61
1:C:18:ALA:O	1:C:19:PHE:HB2	2.02	0.59

There are no symmetry-related clashes.

## 5.3 Torsion angles [i](#)

### 5.3.1 Protein backbone [i](#)

In the following table, the Percentiles column shows the percent Ramachandran outliers of the chain as a percentile score with respect to all X-ray entries followed by that with respect to entries of similar resolution.

The Analysed column shows the number of residues for which the backbone conformation was analysed, and the total number of residues.

Mol	Chain	Analysed	Favoured	Allowed	Outliers	Percentiles	
1	A	177/179 (99%)	172 (97%)	5 (3%)	0	100	100
1	B	177/179 (99%)	174 (98%)	3 (2%)	0	100	100
1	C	177/179 (99%)	173 (98%)	4 (2%)	0	100	100
1	D	177/179 (99%)	171 (97%)	6 (3%)	0	100	100
All	All	708/716 (99%)	690 (98%)	18 (2%)	0	100	100

There are no Ramachandran outliers to report.

### 5.3.2 Protein sidechains ⓘ

In the following table, the Percentiles column shows the percent sidechain outliers of the chain as a percentile score with respect to all X-ray entries followed by that with respect to entries of similar resolution.

The Analysed column shows the number of residues for which the sidechain conformation was analysed, and the total number of residues.

Mol	Chain	Analysed	Rotameric	Outliers	Percentiles	
1	A	136/131 (104%)	133 (98%)	3 (2%)	47	28
1	B	136/131 (104%)	133 (98%)	3 (2%)	47	28
1	C	136/131 (104%)	133 (98%)	3 (2%)	47	28
1	D	136/131 (104%)	135 (99%)	1 (1%)	81	74
All	All	544/524 (104%)	534 (98%)	10 (2%)	54	36

5 of 10 residues with a non-rotameric sidechain are listed below:

Mol	Chain	Res	Type
1	C	59	LEU
1	C	158	LEU
1	D	88	MSE
1	B	88	MSE
1	B	112	ARG

Sometimes sidechains can be flipped to improve hydrogen bonding and reduce clashes. 5 of 9 such sidechains are listed below:

Mol	Chain	Res	Type
1	C	177	GLN
1	D	41	GLN
1	B	177	GLN

*Continued on next page...*

*Continued from previous page...*

Mol	Chain	Res	Type
1	C	41	GLN
1	C	145	GLN

### 5.3.3 RNA ⓘ

There are no RNA molecules in this entry.

## 5.4 Non-standard residues in protein, DNA, RNA chains ⓘ

There are no non-standard protein/DNA/RNA residues in this entry.

## 5.5 Carbohydrates ⓘ

There are no oligosaccharides in this entry.

## 5.6 Ligand geometry ⓘ

Of 18 ligands modelled in this entry, 9 are monoatomic - leaving 9 for Mogul analysis.

In the following table, the Counts columns list the number of bonds (or angles) for which Mogul statistics could be retrieved, the number of bonds (or angles) that are observed in the model and the number of bonds (or angles) that are defined in the Chemical Component Dictionary. The Link column lists molecule types, if any, to which the group is linked. The Z score for a bond length (or angle) is the number of standard deviations the observed value is removed from the expected value. A bond length (or angle) with  $|Z| > 2$  is considered an outlier worth inspection. RMSZ is the root-mean-square of all Z scores of the bond lengths (or angles).

Mol	Type	Chain	Res	Link	Bond lengths			Bond angles		
					Counts	RMSZ	$\# Z  > 2$	Counts	RMSZ	$\# Z  > 2$
6	FX1	C	2006	-	11,12,12	2.04	1 (9%)	9,18,18	2.94	3 (33%)
4	PO4	B	2005	-	4,4,4	0.83	0	6,6,6	0.68	0
4	PO4	C	2003	2	4,4,4	0.96	0	6,6,6	0.87	0
7	SAR	D	2008	-	5,5,5	1.17	1 (20%)	3,5,5	1.64	1 (33%)
4	PO4	B	2002	2	4,4,4	0.74	0	6,6,6	0.66	0
5	FMT	D	2009	-	2,2,2	0.73	0	1,1,1	0.30	0
5	FMT	A	2007	-	2,2,2	0.75	0	1,1,1	0.27	0
4	PO4	A	2001	2	4,4,4	0.63	0	6,6,6	0.40	0
4	PO4	D	2004	2	4,4,4	0.81	0	6,6,6	0.49	0

In the following table, the Chirals column lists the number of chiral outliers, the number of chiral

centers analysed, the number of these observed in the model and the number defined in the Chemical Component Dictionary. Similar counts are reported in the Torsion and Rings columns. '-' means no outliers of that kind were identified.

Mol	Type	Chain	Res	Link	Chirals	Torsions	Rings
6	FX1	C	2006	-	-	4/5/24/24	0/1/1/1
7	SAR	D	2008	-	-	2/2/3/3	-

All (2) bond length outliers are listed below:

Mol	Chain	Res	Type	Atoms	Z	Observed(Å)	Ideal(Å)
6	C	2006	FX1	C2-C3	-6.15	1.51	1.55
7	D	2008	SAR	OXT-C	-2.30	1.23	1.30

All (4) bond angle outliers are listed below:

Mol	Chain	Res	Type	Atoms	Z	Observed(°)	Ideal(°)
6	C	2006	FX1	O1-C1-C2	7.25	127.71	111.67
6	C	2006	FX1	O3-C3-C2	-3.67	110.73	114.08
7	D	2008	SAR	OXT-C-O	-2.30	117.41	123.33
6	C	2006	FX1	C1-C2-C3	-2.25	108.53	114.87

There are no chirality outliers.

5 of 6 torsion outliers are listed below:

Mol	Chain	Res	Type	Atoms
6	C	2006	FX1	O1-C1-C2-O2
6	C	2006	FX1	O1-C1-C2-C3
6	C	2006	FX1	O1-C1-C2-O5
7	D	2008	SAR	OXT-C-CA-N
7	D	2008	SAR	O-C-CA-N

There are no ring outliers.

2 monomers are involved in 5 short contacts:

Mol	Chain	Res	Type	Clashes	Symm-Clashes
6	C	2006	FX1	4	0
7	D	2008	SAR	1	0

## 5.7 Other polymers ⓘ

There are no such residues in this entry.

## 5.8 Polymer linkage issues ⓘ

There are no chain breaks in this entry.

## 6 Fit of model and data [i](#)

### 6.1 Protein, DNA and RNA chains [i](#)

In the following table, the column labelled ‘#RSRZ > 2’ contains the number (and percentage) of RSRZ outliers, followed by percent RSRZ outliers for the chain as percentile scores relative to all X-ray entries and entries of similar resolution. The OWAB column contains the minimum, median, 95<sup>th</sup> percentile and maximum values of the occupancy-weighted average B-factor per residue. The column labelled ‘Q < 0.9’ lists the number of (and percentage) of residues with an average occupancy less than 0.9.

Mol	Chain	Analysed	<RSRZ>	#RSRZ>2	OWAB(Å <sup>2</sup> )	Q<0.9
1	A	174/179 (97%)	-0.46	1 (0%) 85 88	9, 13, 22, 28	0
1	B	174/179 (97%)	-0.39	3 (1%) 69 72	10, 14, 22, 39	0
1	C	174/179 (97%)	0.15	4 (2%) 61 65	11, 21, 35, 42	0
1	D	174/179 (97%)	0.19	1 (0%) 85 88	13, 23, 37, 44	0
All	All	696/716 (97%)	-0.13	9 (1%) 74 78	9, 17, 34, 44	0

The worst 5 of 9 RSRZ outliers are listed below:

Mol	Chain	Res	Type	RSRZ
1	B	179	ALA	6.6
1	C	179	ALA	5.5
1	D	179	ALA	3.2
1	C	177	GLN	2.9
1	C	78	GLN	2.3

### 6.2 Non-standard residues in protein, DNA, RNA chains [i](#)

There are no non-standard protein/DNA/RNA residues in this entry.

### 6.3 Carbohydrates [i](#)

There are no monosaccharides in this entry.

### 6.4 Ligands [i](#)

In the following table, the Atoms column lists the number of modelled atoms in the group and the number defined in the chemical component dictionary. The B-factors column lists the minimum, median, 95<sup>th</sup> percentile and maximum values of B factors of atoms in the group. The column labelled ‘Q < 0.9’ lists the number of atoms with occupancy less than 0.9.

Mol	Type	Chain	Res	Atoms	RSCC	RSR	B-factors( $\text{\AA}^2$ )	Q<0.9
7	SAR	D	2008	6/6	0.69	0.17	30,31,33,35	0
6	FX1	C	2006	12/12	0.74	0.18	25,29,32,32	8
5	FMT	A	2007	3/3	0.86	0.11	23,23,25,27	0
2	MG	A	180	1/1	0.87	0.19	28,28,28,28	0
5	FMT	D	2009	3/3	0.89	0.09	26,26,28,34	0
4	PO4	C	2003	5/5	0.90	0.14	18,19,23,23	0
4	PO4	D	2004	5/5	0.94	0.11	21,21,25,26	0
4	PO4	A	2001	5/5	0.95	0.09	11,12,14,15	0
4	PO4	B	2005	5/5	0.95	0.12	24,25,26,26	0
4	PO4	B	2002	5/5	0.96	0.09	13,13,15,15	0
2	MG	D	804	1/1	0.98	0.05	19,19,19,19	0
3	ZN	C	903	1/1	0.98	0.03	27,27,27,27	0
3	ZN	D	904	1/1	0.98	0.04	26,26,26,26	0
3	ZN	B	902	1/1	0.99	0.02	14,14,14,14	0
2	MG	C	803	1/1	0.99	0.03	15,15,15,15	0
2	MG	A	801	1/1	0.99	0.03	10,10,10,10	0
2	MG	B	802	1/1	1.00	0.02	11,11,11,11	0
3	ZN	A	901	1/1	1.00	0.01	11,11,11,11	0

## 6.5 Other polymers [i](#)

There are no such residues in this entry.