



wwPDB EM Validation Summary Report ⓘ

Jun 10, 2025 – 03:37 PM JST

PDB ID : 6LHU / pdb_00006lhu
EMDB ID : EMD-0899
Title : High resolution structure of FANCA C-terminal domain (CTD)
Authors : Jeong, E.; Lee, S.; Shin, J.; Kim, Y.; Kim, J.; Scharer, O.; Kim, Y.; Kim, H.;
Cho, Y.
Deposited on : 2019-12-10
Resolution : 3.46 Å(reported)

This is a wwPDB EM Validation Summary Report for a publicly released PDB entry.

We welcome your comments at validation@mail.wwpdb.org

A user guide is available at

<https://www.wwpdb.org/validation/2017/EMValidationReportHelp>
with specific help available everywhere you see the ⓘ symbol.

The types of validation reports are described at

<http://www.wwpdb.org/validation/2017/FAQs#types>.

The following versions of software and data (see [references ⓘ](#)) were used in the production of this report:

EMDB validation analysis : 0.0.1.dev118
MolProbity : **FAILED**
Percentile statistics : 20231227.v01 (using entries in the PDB archive December 27th 2023)
MapQ : 1.9.13
Ideal geometry (proteins) : Engh & Huber (2001)
Ideal geometry (DNA, RNA) : Parkinson et al. (1996)
Validation Pipeline (wwPDB-VP) : 2.43.1

1 Overall quality at a glance

The following experimental techniques were used to determine the structure:

ELECTRON MICROSCOPY

The reported resolution of this entry is 3.46 Å.

There are no overall percentile quality scores available for this entry.

MolProbity failed to run properly - the sequence quality summary graphics cannot be shown.

2 Entry composition

There is only 1 type of molecule in this entry. The entry contains 23169 atoms, of which 11483 are hydrogens and 0 are deuteriums.

In the tables below, the AltConf column contains the number of residues with at least one atom in alternate conformation and the Trace column contains the number of residues modelled with at most 2 atoms.

- Molecule 1 is a protein called Fanconi anemia complementation group A.

Mol	Chain	Residues	Atoms						AltConf	Trace
1	B	807	Total	C	H	N	O	S	0	0
			12376	3997	6142	1075	1119	43		
1	A	711	Total	C	H	N	O	S	0	0
			10793	3496	5341	948	971	37		

There are 30 discrepancies between the modelled and reference sequences:

Chain	Residue	Modelled	Actual	Comment	Reference
B	-14	MET	-	expression tag	UNP Q4VT51
B	-13	TRP	-	expression tag	UNP Q4VT51
B	-12	SER	-	expression tag	UNP Q4VT51
B	-11	HIS	-	expression tag	UNP Q4VT51
B	-10	PRO	-	expression tag	UNP Q4VT51
B	-9	GLN	-	expression tag	UNP Q4VT51
B	-8	PHE	-	expression tag	UNP Q4VT51
B	-7	GLU	-	expression tag	UNP Q4VT51
B	-6	LYS	-	expression tag	UNP Q4VT51
B	-5	GLY	-	expression tag	UNP Q4VT51
B	-4	SER	-	expression tag	UNP Q4VT51
B	-3	GLY	-	expression tag	UNP Q4VT51
B	-2	GLY	-	expression tag	UNP Q4VT51
B	-1	SER	-	expression tag	UNP Q4VT51
B	0	GLY	-	expression tag	UNP Q4VT51
A	-14	MET	-	expression tag	UNP Q4VT51
A	-13	TRP	-	expression tag	UNP Q4VT51
A	-12	SER	-	expression tag	UNP Q4VT51
A	-11	HIS	-	expression tag	UNP Q4VT51
A	-10	PRO	-	expression tag	UNP Q4VT51
A	-9	GLN	-	expression tag	UNP Q4VT51
A	-8	PHE	-	expression tag	UNP Q4VT51
A	-7	GLU	-	expression tag	UNP Q4VT51
A	-6	LYS	-	expression tag	UNP Q4VT51
A	-5	GLY	-	expression tag	UNP Q4VT51
A	-4	SER	-	expression tag	UNP Q4VT51

Continued on next page...

Continued from previous page...

Chain	Residue	Modelled	Actual	Comment	Reference
A	-3	GLY	-	expression tag	UNP Q4VT51
A	-2	GLY	-	expression tag	UNP Q4VT51
A	-1	SER	-	expression tag	UNP Q4VT51
A	0	GLY	-	expression tag	UNP Q4VT51

MolProbity failed to run properly - this section is therefore empty.

3 Experimental information

Property	Value	Source
EM reconstruction method	SINGLE PARTICLE	Depositor
Imposed symmetry	POINT, Not provided	
Number of particles used	150141	Depositor
Resolution determination method	FSC 0.143 CUT-OFF	Depositor
CTF correction method	PHASE FLIPPING AND AMPLITUDE CORRECTION	Depositor
Microscope	FEI TITAN KRIOS	Depositor
Voltage (kV)	300	Depositor
Electron dose ($e^-/\text{\AA}^2$)	30	Depositor
Minimum defocus (nm)	Not provided	
Maximum defocus (nm)	Not provided	
Magnification	Not provided	
Image detector	FEI FALCON III (4k x 4k)	Depositor
Maximum map value	6.487	Depositor
Minimum map value	-3.418	Depositor
Average map value	-0.000	Depositor
Map value standard deviation	0.119	Depositor
Recommended contour level	1.02	Depositor
Map size (Å)	358.4, 358.4, 358.4	wwPDB
Map dimensions	256, 256, 256	wwPDB
Map angles (°)	90.0, 90.0, 90.0	wwPDB
Pixel spacing (Å)	1.4, 1.4, 1.4	Depositor

4 Model quality [i](#)

4.1 Standard geometry [i](#)

MolProbity failed to run properly - this section is therefore empty.

4.2 Too-close contacts [i](#)

MolProbity failed to run properly - this section is therefore empty.

4.3 Torsion angles [i](#)

4.3.1 Protein backbone [i](#)

MolProbity failed to run properly - this section is therefore empty.

4.3.2 Protein sidechains [i](#)

MolProbity failed to run properly - this section is therefore empty.

4.3.3 RNA [i](#)

MolProbity failed to run properly - this section is therefore empty.

4.4 Non-standard residues in protein, DNA, RNA chains [i](#)

There are no non-standard protein/DNA/RNA residues in this entry.

4.5 Carbohydrates [i](#)

There are no oligosaccharides in this entry.

4.6 Ligand geometry [i](#)

There are no ligands in this entry.

4.7 Other polymers [i](#)

There are no such residues in this entry.

4.8 Polymer linkage issues ⓘ

There are no chain breaks in this entry.

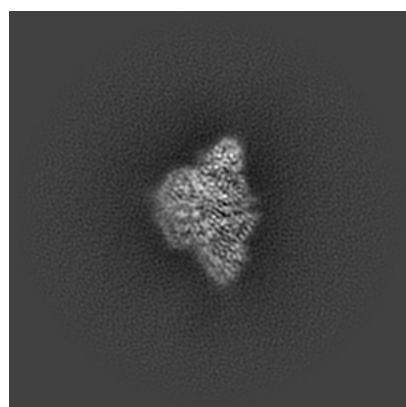
5 Map visualisation [i](#)

This section contains visualisations of the EMDB entry EMD-0899. These allow visual inspection of the internal detail of the map and identification of artifacts.

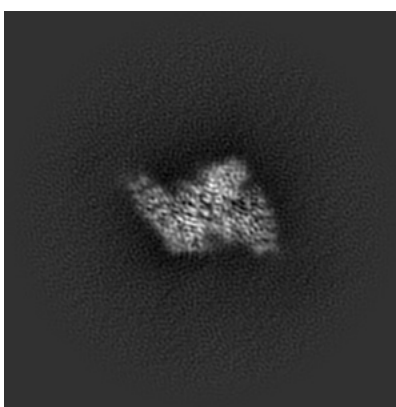
No raw map or half-maps were deposited for this entry and therefore no images, graphs, etc. pertaining to the raw map can be shown.

5.1 Orthogonal projections [i](#)

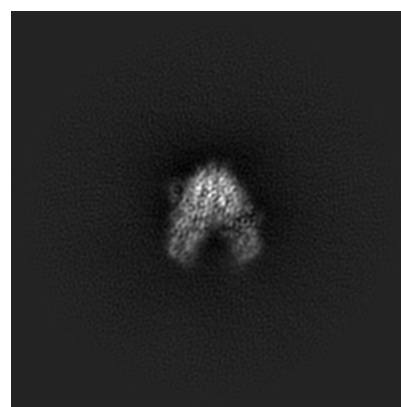
5.1.1 Primary map



X



Y

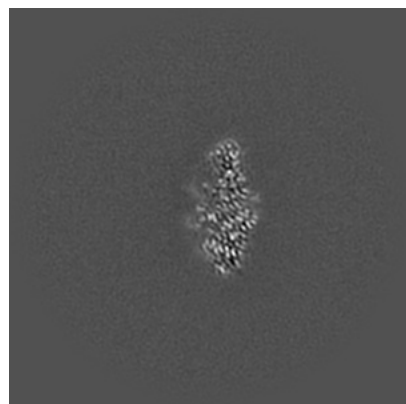


Z

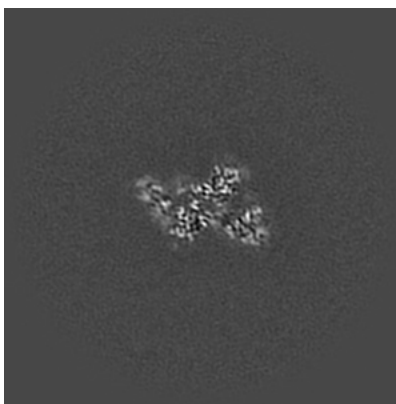
The images above show the map projected in three orthogonal directions.

5.2 Central slices [i](#)

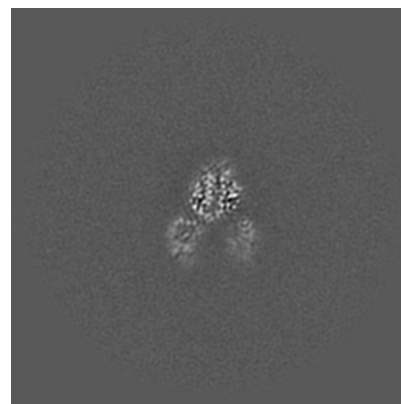
5.2.1 Primary map



X Index: 128



Y Index: 128

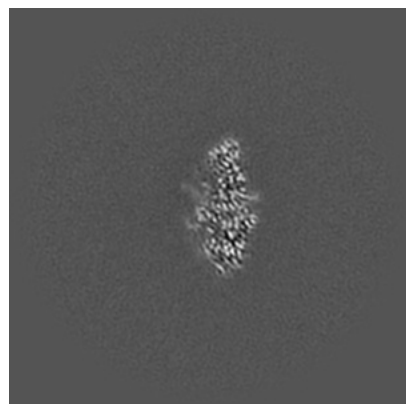


Z Index: 128

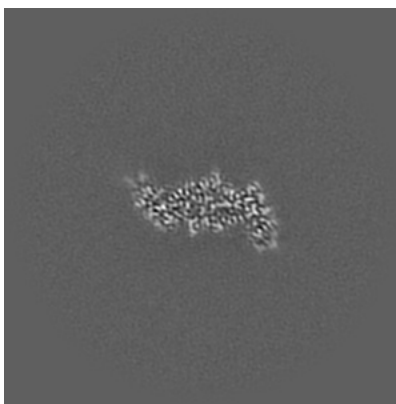
The images above show central slices of the map in three orthogonal directions.

5.3 Largest variance slices [i](#)

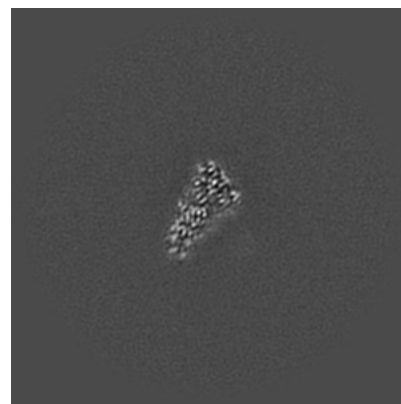
5.3.1 Primary map



X Index: 127



Y Index: 139

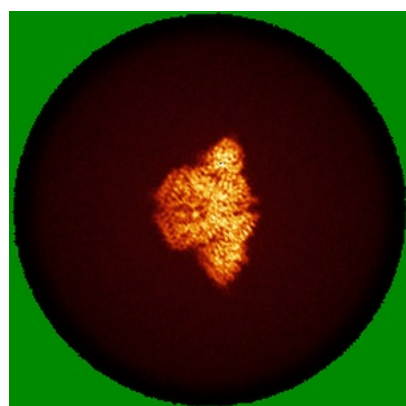


Z Index: 118

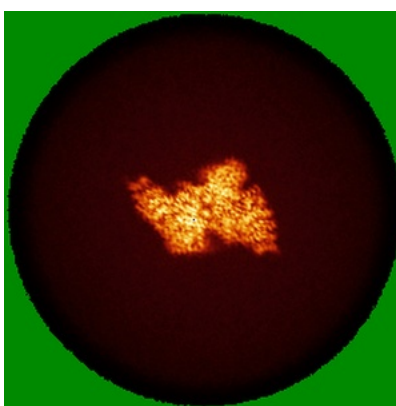
The images above show the largest variance slices of the map in three orthogonal directions.

5.4 Orthogonal standard-deviation projections (False-color) [i](#)

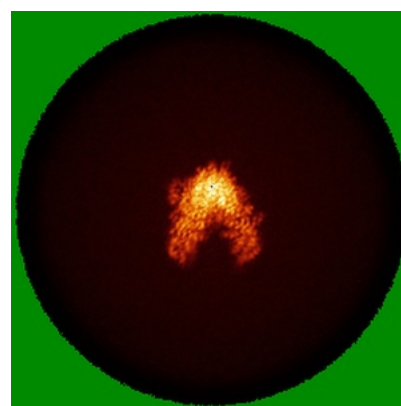
5.4.1 Primary map



X



Y

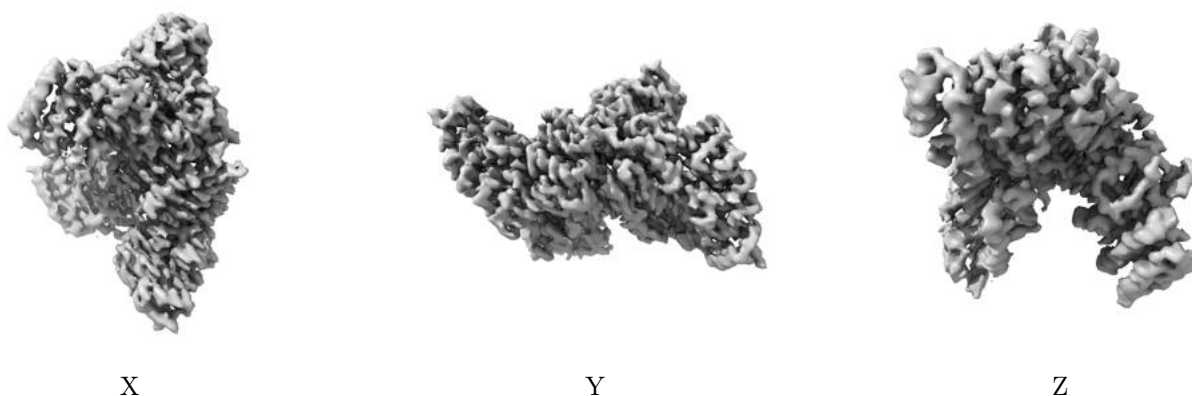


Z

The images above show the map standard deviation projections with false color in three orthogonal directions. Minimum values are shown in green, max in blue, and dark to light orange shades represent small to large values respectively.

5.5 Orthogonal surface views [i](#)

5.5.1 Primary map



The images above show the 3D surface view of the map at the recommended contour level 1.02. These images, in conjunction with the slice images, may facilitate assessment of whether an appropriate contour level has been provided.

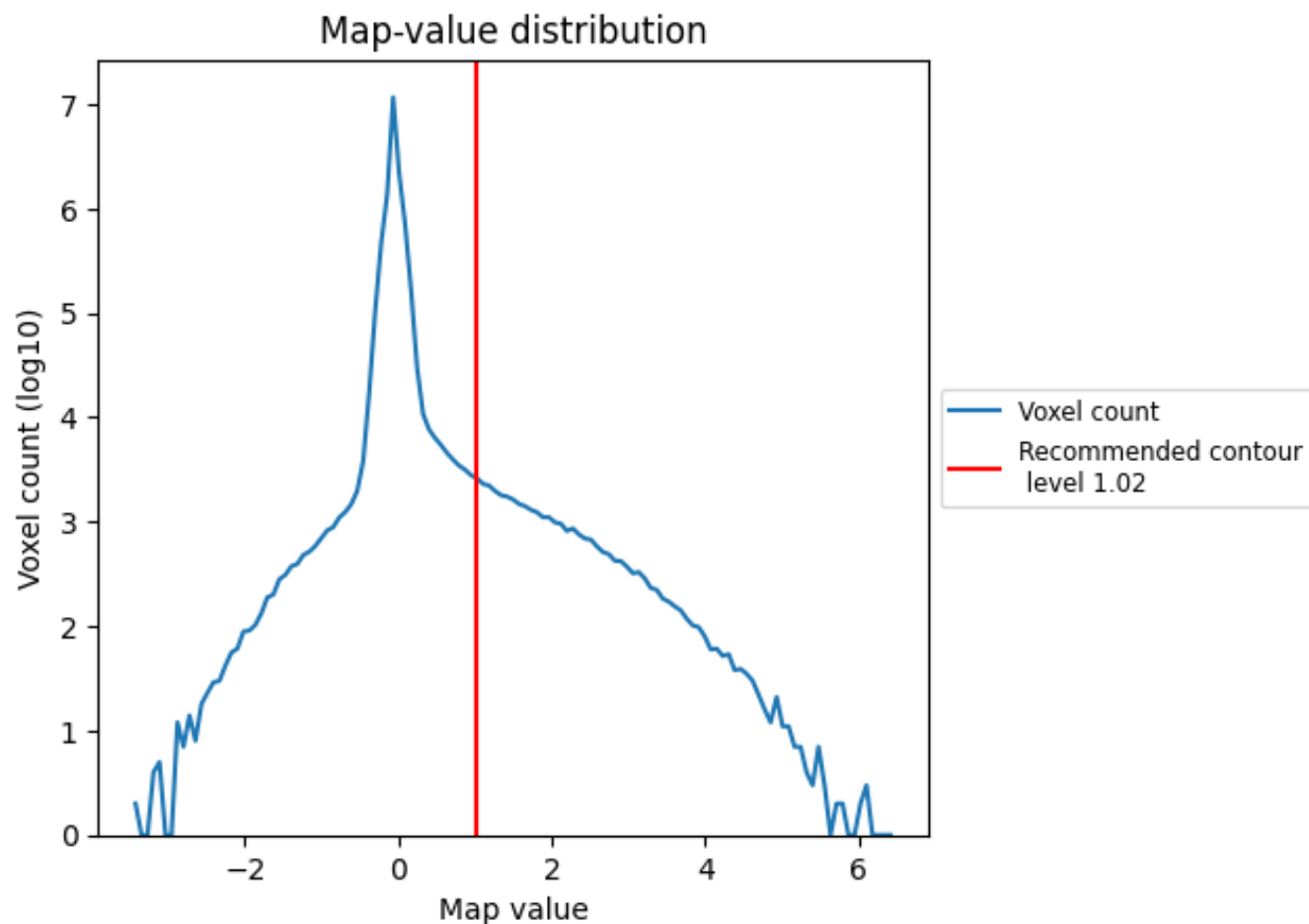
5.6 Mask visualisation [i](#)

This section was not generated. No masks/segmentation were deposited.

6 Map analysis [i](#)

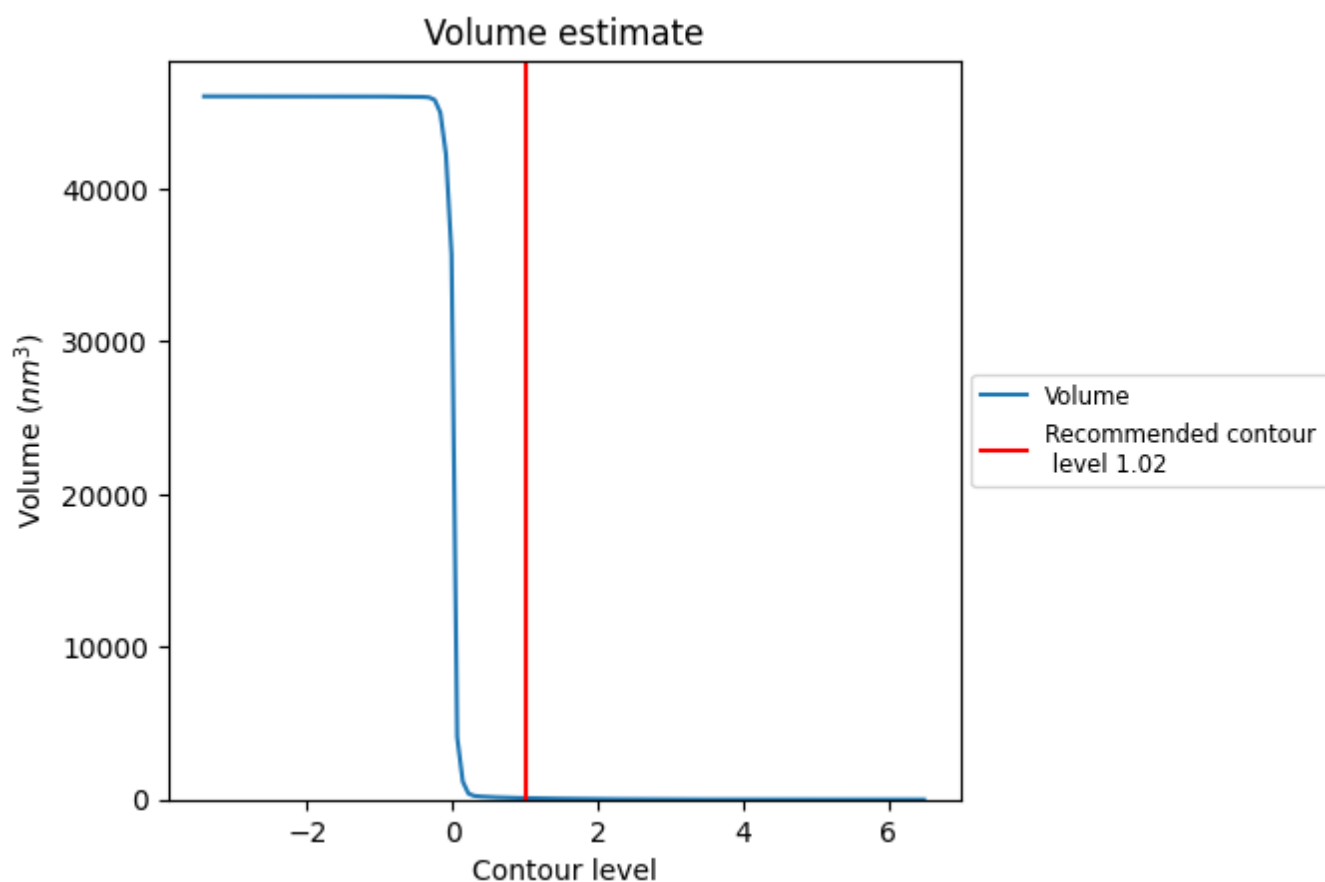
This section contains the results of statistical analysis of the map.

6.1 Map-value distribution [i](#)



The map-value distribution is plotted in 128 intervals along the x-axis. The y-axis is logarithmic. A spike in this graph at zero usually indicates that the volume has been masked.

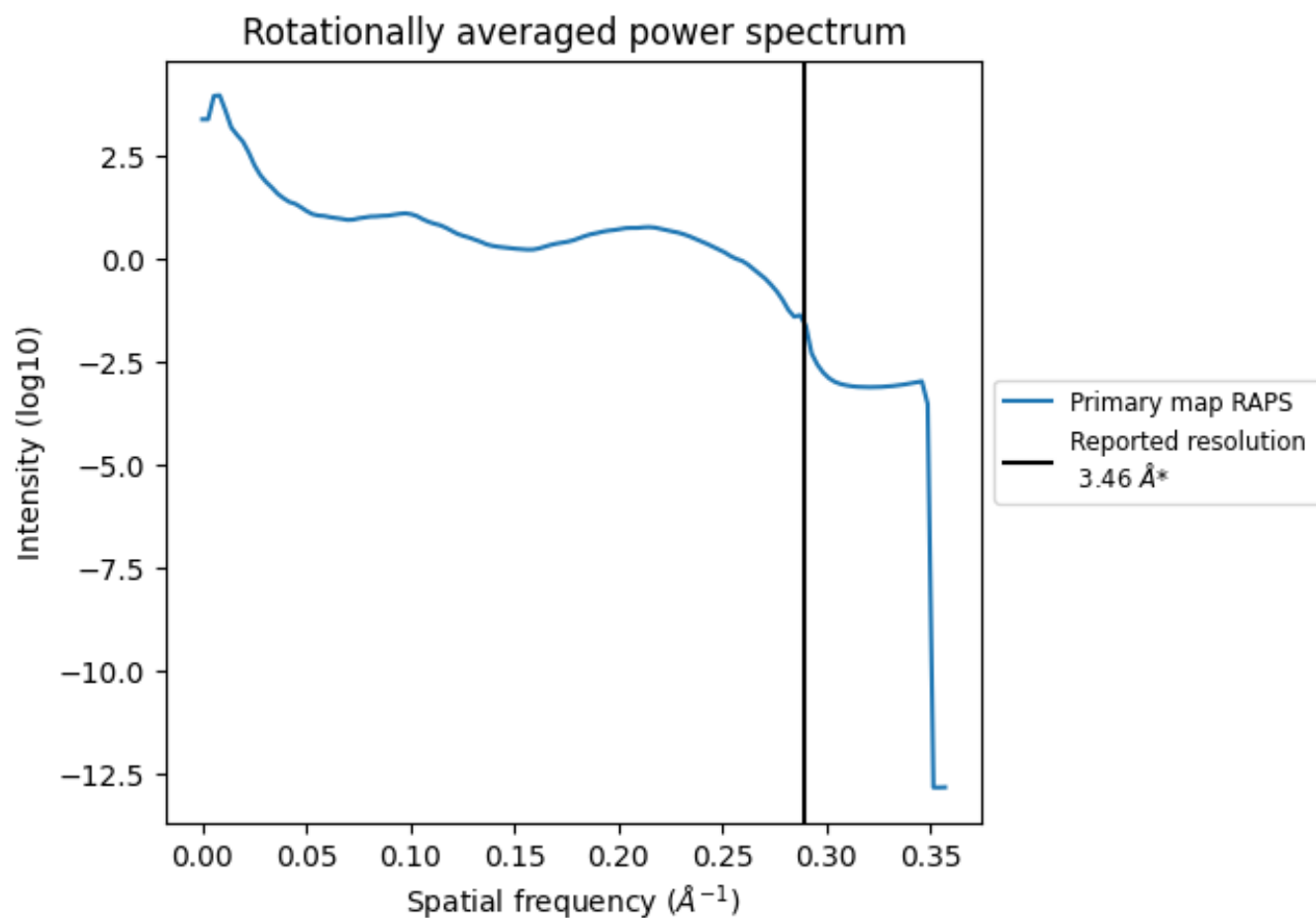
6.2 Volume estimate [i](#)



The volume at the recommended contour level is 93 nm^3 ; this corresponds to an approximate mass of 84 kDa.

The volume estimate graph shows how the enclosed volume varies with the contour level. The recommended contour level is shown as a vertical line and the intersection between the line and the curve gives the volume of the enclosed surface at the given level.

6.3 Rotationally averaged power spectrum ⓘ



*Reported resolution corresponds to spatial frequency of 0.289 Å⁻¹

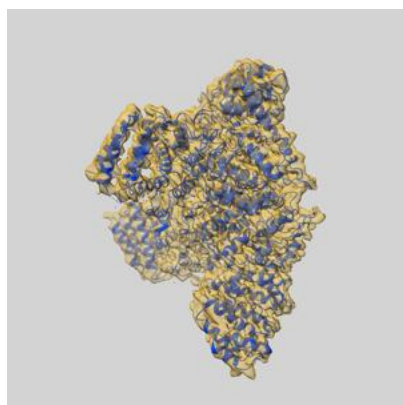
7 Fourier-Shell correlation

This section was not generated. No FSC curve or half-maps provided.

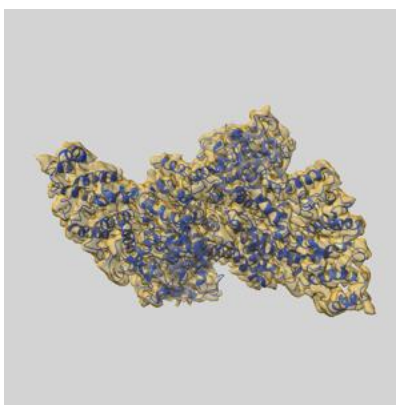
8 Map-model fit [i](#)

This section contains information regarding the fit between EMDB map EMD-0899 and PDB model 6LHU. Per-residue inclusion information can be found in section ?? on page ??.

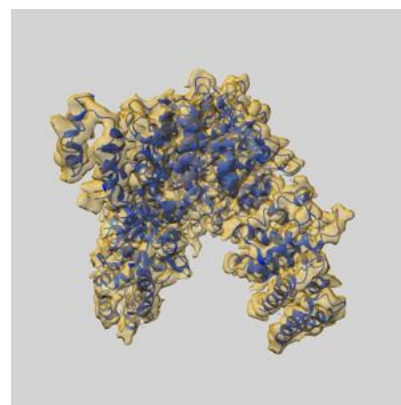
8.1 Map-model overlay [i](#)



X



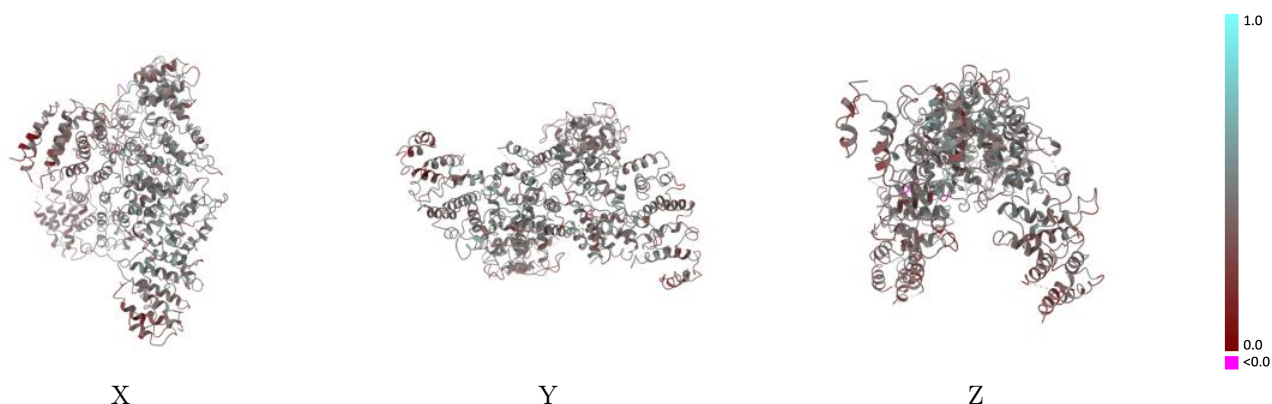
Y



Z

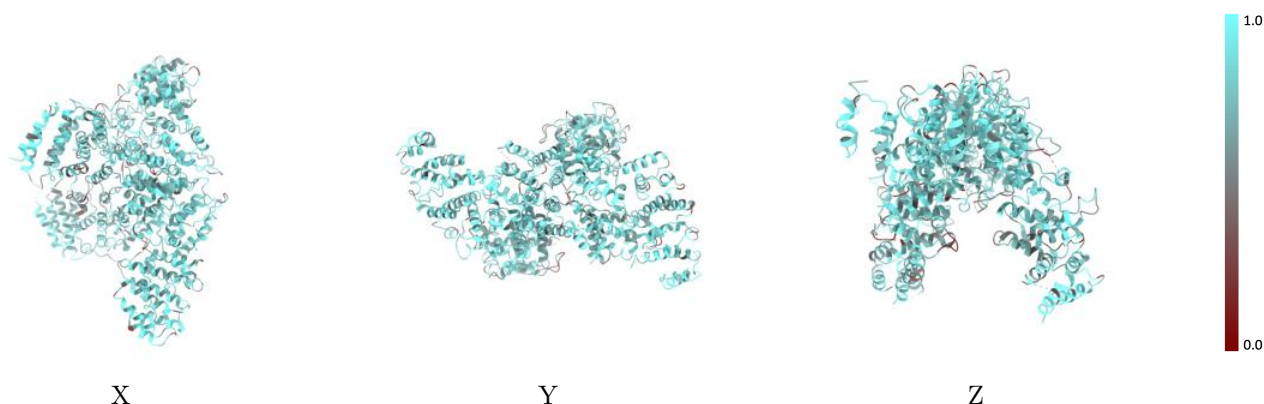
The images above show the 3D surface view of the map at the recommended contour level 1.02 at 50% transparency in yellow overlaid with a ribbon representation of the model coloured in blue. These images allow for the visual assessment of the quality of fit between the atomic model and the map.

8.2 Q-score mapped to coordinate model [i](#)



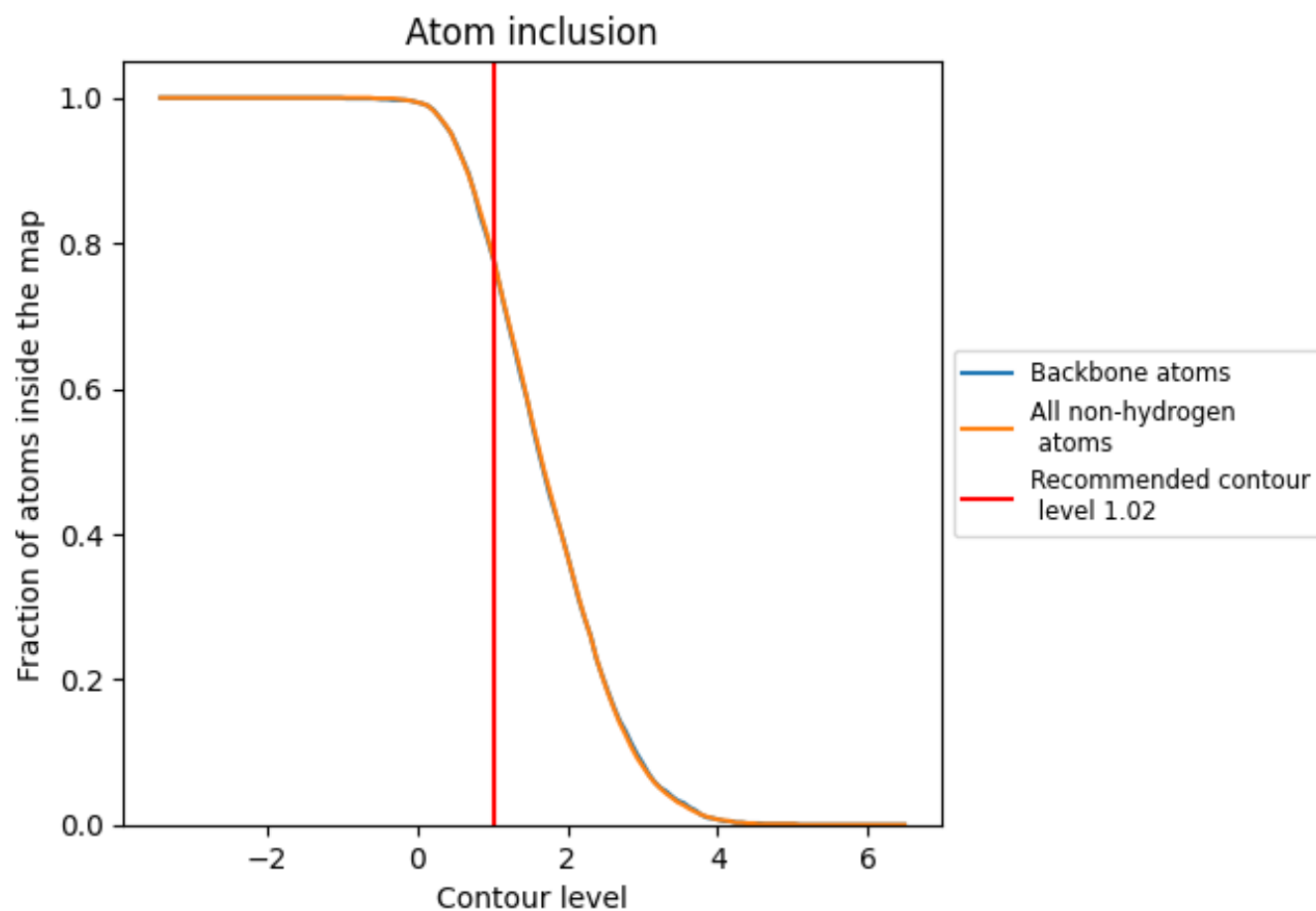
The images above show the model with each residue coloured according to its Q-score. This shows their resolvability in the map with higher Q-score values reflecting better resolvability. Please note: Q-score is calculating the resolvability of atoms, and thus high values are only expected at resolutions at which atoms can be resolved. Low Q-score values may therefore be expected for many entries.

8.3 Atom inclusion mapped to coordinate model [i](#)



The images above show the model with each residue coloured according to its atom inclusion. This shows to what extent they are inside the map at the recommended contour level (1.02).

8.4 Atom inclusion [i](#)



At the recommended contour level, 78% of all backbone atoms, 78% of all non-hydrogen atoms, are inside the map.

8.5 Map-model fit summary ⓘ

The table lists the average atom inclusion at the recommended contour level (1.02) and Q-score for the entire model and for each chain.

Chain	Atom inclusion	Q-score
All	<div></div> 0.7770	<div></div> 0.4230
A	<div></div> 0.7900	<div></div> 0.4280
B	<div></div> 0.7780	<div></div> 0.4190

