



Full wwPDB X-ray Structure Validation Report ⓘ

Apr 1, 2025 – 10:50 pm BST

PDB ID : 5LRE / pdb_00005lre
Title : Crystal structure of Glycogen Phosphorylase b in complex with KS382
Authors : Kantsadi, A.L.; Stravodimos, G.A.; Kyriakis, E.; Chatzileontiadou, D.S.M.;
Leonidas, D.D.
Deposited on : 2016-08-18
Resolution : 1.80 Å(reported)

This is a Full wwPDB X-ray Structure Validation Report for a publicly released PDB entry.

We welcome your comments at validation@mail.wwpdb.org

A user guide is available at

<https://www.wwpdb.org/validation/2017/XrayValidationReportHelp>

with specific help available everywhere you see the ⓘ symbol.

The types of validation reports are described at

<http://www.wwpdb.org/validation/2017/FAQs#types>.

The following versions of software and data (see [references ⓘ](#)) were used in the production of this report:

MolProbity : 4.02b-467
Mogul : 1.8.4, CSD as541be (2020)
Xtriage (Phenix) : 1.13
EDS : 3.0
buster-report : 1.1.7 (2018)
Percentile statistics : 20231227.v01 (using entries in the PDB archive December 27th 2023)
CCP4 : 9.0.003 (Gargrove)
Density-Fitness : 1.0.11
Ideal geometry (proteins) : Engh & Huber (2001)
Ideal geometry (DNA, RNA) : Parkinson et al. (1996)
Validation Pipeline (wwPDB-VP) : 2.42

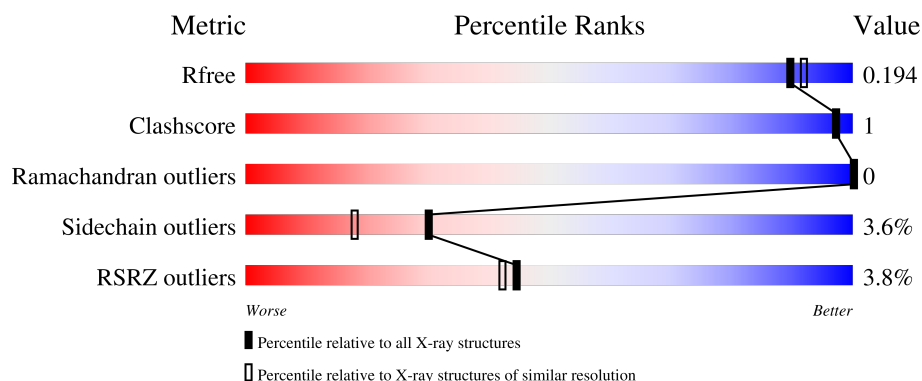
1 Overall quality at a glance

The following experimental techniques were used to determine the structure:

X-RAY DIFFRACTION

The reported resolution of this entry is 1.80 Å.

Percentile scores (ranging between 0-100) for global validation metrics of the entry are shown in the following graphic. The table shows the number of entries on which the scores are based.



Metric	Whole archive (#Entries)	Similar resolution (#Entries, resolution range(Å))
R_{free}	164625	7108 (1.80-1.80)
Clashscore	180529	8162 (1.80-1.80)
Ramachandran outliers	177936	8077 (1.80-1.80)
Sidechain outliers	177891	8076 (1.80-1.80)
RSRZ outliers	164620	7108 (1.80-1.80)

The table below summarises the geometric issues observed across the polymeric chains and their fit to the electron density. The red, orange, yellow and green segments of the lower bar indicate the fraction of residues that contain outliers for ≥ 3 , 2, 1 and 0 types of geometric quality criteria respectively. A grey segment represents the fraction of residues that are not modelled. The numeric value for each fraction is indicated below the corresponding segment, with a dot representing fractions $\leq 5\%$. The upper red bar (where present) indicates the fraction of residues that have poor fit to the electron density. The numeric value is given above the bar.

Mol	Chain	Length	Quality of chain
1	A	842	<div> <div>4%</div> <div>91%</div> <div>.</div> <div>.</div> </div>

2 Entry composition [i](#)

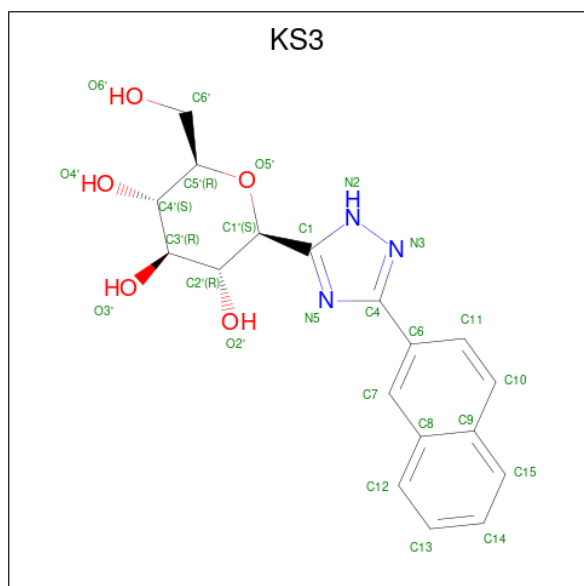
There are 5 unique types of molecules in this entry. The entry contains 7001 atoms, of which 0 are hydrogens and 0 are deuteriums.

In the tables below, the ZeroOcc column contains the number of atoms modelled with zero occupancy, the AltConf column contains the number of residues with at least one atom in alternate conformation and the Trace column contains the number of residues modelled with at most 2 atoms.

- Molecule 1 is a protein called Glycogen phosphorylase, muscle form.

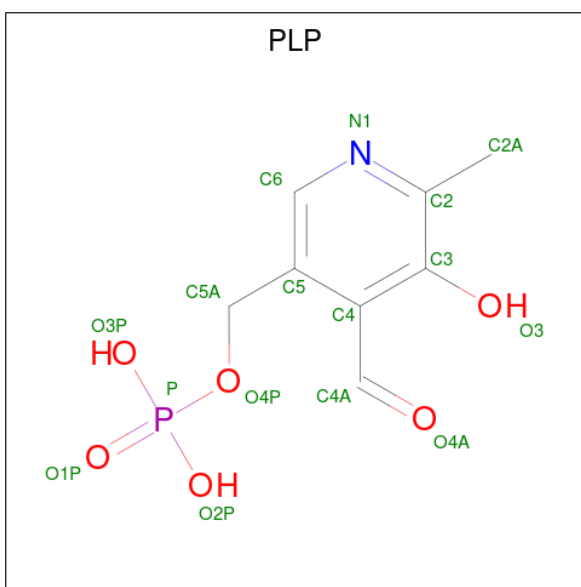
Mol	Chain	Residues	Atoms					ZeroOcc	AltConf	Trace
1	A	810	Total	C	N	O	S	11	3	0
			6607	4212	1164	1201	30			

- Molecule 2 is (2 {R},3 {S},4 {R},5 {R},6 {S})-2-(hydroxymethyl)-6-(3-naphthalen-2-yl-1 {H})-1,2,4-triazol-5-yl)oxane-3,4,5-triol (CCD ID: KS3) (formula: C₁₈H₁₉N₃O₅).



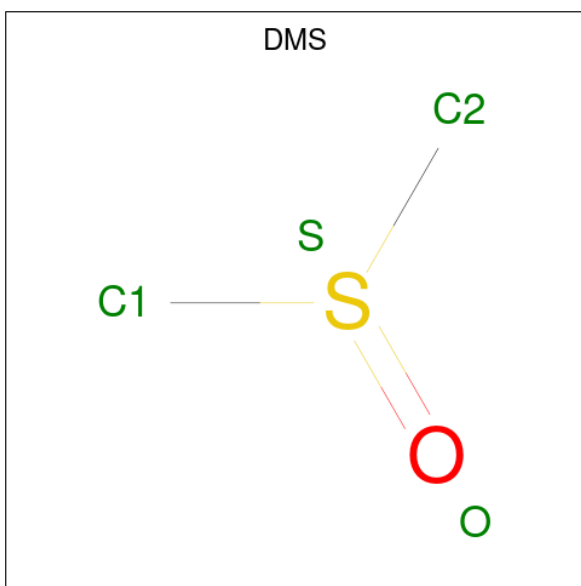
Mol	Chain	Residues	Atoms				ZeroOcc	AltConf
2	A	1	Total	C	N	O	0	0
			26	18	3	5		
2	A	1	Total	C	N	O	0	0
			26	18	3	5		

- Molecule 3 is PYRIDOXAL-5'-PHOSPHATE (CCD ID: PLP) (formula: C₈H₁₀NO₆P).



Mol	Chain	Residues	Atoms					ZeroOcc	AltConf
3	A	1	Total	C	N	O	P	0	0
			15	8	1	5	1		

- Molecule 4 is DIMETHYL SULFOXIDE (CCD ID: DMS) (formula: C_2H_6OS).



Mol	Chain	Residues	Atoms				ZeroOcc	AltConf
4	A	1	Total	C	O	S	0	0
			4	2	1	1		
4	A	1	Total	C	O	S	0	0
			4	2	1	1		

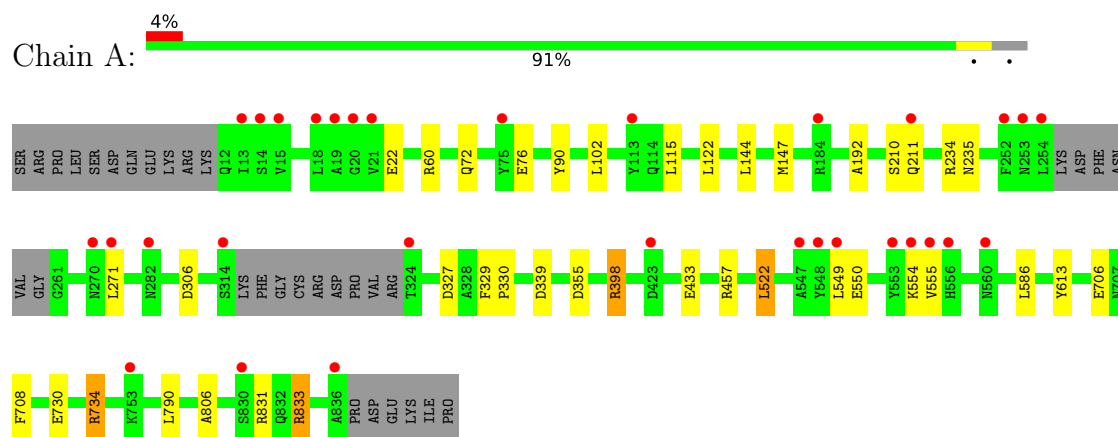
- Molecule 5 is water.

Mol	Chain	Residues	Atoms		ZeroOcc	AltConf
5	A	319	Total 319	O 319	0	0

3 Residue-property plots [i](#)

These plots are drawn for all protein, RNA, DNA and oligosaccharide chains in the entry. The first graphic for a chain summarises the proportions of the various outlier classes displayed in the second graphic. The second graphic shows the sequence view annotated by issues in geometry and electron density. Residues are color-coded according to the number of geometric quality criteria for which they contain at least one outlier: green = 0, yellow = 1, orange = 2 and red = 3 or more. A red dot above a residue indicates a poor fit to the electron density ($RSRZ > 2$). Stretches of 2 or more consecutive residues without any outlier are shown as a green connector. Residues present in the sample, but not in the model, are shown in grey.

- Molecule 1: Glycogen phosphorylase, muscle form



4 Data and refinement statistics

Property	Value	Source
Space group	P 43 21 2	Depositor
Cell constants a, b, c, α , β , γ	128.57Å 128.57Å 116.36Å 90.00° 90.00° 90.00°	Depositor
Resolution (Å)	38.41 – 1.80 38.41 – 1.80	Depositor EDS
% Data completeness (in resolution range)	97.8 (38.41-1.80) 97.8 (38.41-1.80)	Depositor EDS
R_{merge}	(Not available)	Depositor
R_{sym}	0.05	Depositor
$\langle I/\sigma(I) \rangle$ ¹	2.95 (at 1.81Å)	Xtriage
Refinement program	REFMAC 5.7.0029	Depositor
R, R_{free}	0.161 , 0.186 0.172 , 0.194	Depositor DCC
R_{free} test set	4327 reflections (4.89%)	wwPDB-VP
Wilson B-factor (Å ²)	26.7	Xtriage
Anisotropy	0.029	Xtriage
Bulk solvent k_{sol} (e/Å ³), B_{sol} (Å ²)	0.35 , 38.7	EDS
L-test for twinning ²	$\langle L \rangle = 0.50$, $\langle L^2 \rangle = 0.34$	Xtriage
Estimated twinning fraction	No twinning to report.	Xtriage
F_o, F_c correlation	0.97	EDS
Total number of atoms	7001	wwPDB-VP
Average B, all atoms (Å ²)	32.0	wwPDB-VP

Xtriage's analysis on translational NCS is as follows: *The largest off-origin peak in the Patterson function is 2.58% of the height of the origin peak. No significant pseudotranslation is detected.*

¹Intensities estimated from amplitudes.

²Theoretical values of $\langle |L| \rangle$, $\langle L^2 \rangle$ for acentric reflections are 0.5, 0.333 respectively for untwinned datasets, and 0.375, 0.2 for perfectly twinned datasets.

5 Model quality [i](#)

5.1 Standard geometry [i](#)

Bond lengths and bond angles in the following residue types are not validated in this section: KS3, PLP, DMS

The Z score for a bond length (or angle) is the number of standard deviations the observed value is removed from the expected value. A bond length (or angle) with $|Z| > 5$ is considered an outlier worth inspection. RMSZ is the root-mean-square of all Z scores of the bond lengths (or angles).

Mol	Chain	Bond lengths		Bond angles	
		RMSZ	$\# Z > 5$	RMSZ	$\# Z > 5$
1	A	0.51	0/6761	0.69	4/9150 (0.0%)

There are no bond length outliers.

All (4) bond angle outliers are listed below:

Mol	Chain	Res	Type	Atoms	Z	Observed(°)	Ideal(°)
1	A	398	ARG	NE-CZ-NH2	8.79	124.69	120.30
1	A	457	ARG	NE-CZ-NH1	-6.44	117.08	120.30
1	A	457	ARG	NE-CZ-NH2	5.98	123.29	120.30
1	A	398	ARG	NE-CZ-NH1	-5.88	117.36	120.30

There are no chirality outliers.

There are no planarity outliers.

5.2 Too-close contacts [i](#)

In the following table, the Non-H and H(model) columns list the number of non-hydrogen atoms and hydrogen atoms in the chain respectively. The H(added) column lists the number of hydrogen atoms added and optimized by MolProbity. The Clashes column lists the number of clashes within the asymmetric unit, whereas Symm-Clashes lists symmetry-related clashes.

Mol	Chain	Non-H	H(model)	H(added)	Clashes	Symm-Clashes
1	A	6607	0	6550	10	0
2	A	52	0	0	2	2
3	A	15	0	7	0	0
4	A	8	0	12	0	0
5	A	319	0	0	0	0
All	All	7001	0	6569	10	2

The all-atom clashscore is defined as the number of clashes found per 1000 atoms (including hydrogen atoms). The all-atom clashscore for this structure is 1.

All (10) close contacts within the same asymmetric unit are listed below, sorted by their clash magnitude.

Atom-1	Atom-2	Interatomic distance (Å)	Clash overlap (Å)
1:A:192:ALA:H	2:A:902:KS3:C6'	1.72	1.01
1:A:355:ASP:OD2	1:A:398:ARG:HD3	1.97	0.65
1:A:192:ALA:N	2:A:902:KS3:C6'	2.56	0.56
1:A:329:PHE:HB3	1:A:330:PRO:HD3	1.92	0.51
1:A:730:GLU:O	1:A:734:ARG:HG3	2.12	0.50
1:A:72:GLN:O	1:A:76:GLU:HG3	2.15	0.45
1:A:550:GLU:HG2	1:A:555:VAL:O	2.16	0.45
1:A:522:LEU:HD13	1:A:806:ALA:CB	2.47	0.45
1:A:144:LEU:HD23	1:A:147:MET:CE	2.46	0.45
1:A:235:ASN:HA	1:A:833:ARG:HG3	2.02	0.41

All (2) symmetry-related close contacts are listed below. The label for Atom-2 includes the symmetry operator and encoded unit-cell translations to be applied.

Atom-1	Atom-2	Interatomic distance (Å)	Clash overlap (Å)
2:A:902:KS3:O3'	2:A:902:KS3:O3'[7_556]	1.53	0.67
2:A:902:KS3:C2'	2:A:902:KS3:O2'[7_556]	2.13	0.07

5.3 Torsion angles [i](#)

5.3.1 Protein backbone [i](#)

In the following table, the Percentiles column shows the percent Ramachandran outliers of the chain as a percentile score with respect to all X-ray entries followed by that with respect to entries of similar resolution.

The Analysed column shows the number of residues for which the backbone conformation was analysed, and the total number of residues.

Mol	Chain	Analysed	Favoured	Allowed	Outliers	Percentiles
1	A	807/842 (96%)	785 (97%)	22 (3%)	0	100 100

There are no Ramachandran outliers to report.

5.3.2 Protein sidechains ⓘ

In the following table, the Percentiles column shows the percent sidechain outliers of the chain as a percentile score with respect to all X-ray entries followed by that with respect to entries of similar resolution.

The Analysed column shows the number of residues for which the sidechain conformation was analysed, and the total number of residues.

Mol	Chain	Analysed	Rotameric	Outliers	Percentiles	
1	A	704/731 (96%)	679 (96%)	25 (4%)	30	18

All (25) residues with a non-rotameric sidechain are listed below:

Mol	Chain	Res	Type
1	A	22	GLU
1	A	60	ARG
1	A	90	TYR
1	A	102	LEU
1	A	115	LEU
1	A	122	LEU
1	A	210	SER
1	A	211	GLN
1	A	234	ARG
1	A	271	LEU
1	A	306	ASP
1	A	327	ASP
1	A	339	ASP
1	A	433	GLU
1	A	522	LEU
1	A	549	LEU
1	A	554	LYS
1	A	586	LEU
1	A	613	TYR
1	A	706	GLU
1	A	708	PHE
1	A	734	ARG
1	A	790	LEU
1	A	831	ARG
1	A	833	ARG

Sometimes sidechains can be flipped to improve hydrogen bonding and reduce clashes. All (1) such sidechains are listed below:

Mol	Chain	Res	Type
1	A	211	GLN

5.3.3 RNA [i](#)

There are no RNA molecules in this entry.

5.4 Non-standard residues in protein, DNA, RNA chains [i](#)

There are no non-standard protein/DNA/RNA residues in this entry.

5.5 Carbohydrates [i](#)

There are no oligosaccharides in this entry.

5.6 Ligand geometry [i](#)

5 ligands are modelled in this entry.

In the following table, the Counts columns list the number of bonds (or angles) for which Mogul statistics could be retrieved, the number of bonds (or angles) that are observed in the model and the number of bonds (or angles) that are defined in the Chemical Component Dictionary. The Link column lists molecule types, if any, to which the group is linked. The Z score for a bond length (or angle) is the number of standard deviations the observed value is removed from the expected value. A bond length (or angle) with $|Z| > 2$ is considered an outlier worth inspection. RMSZ is the root-mean-square of all Z scores of the bond lengths (or angles).

Mol	Type	Chain	Res	Link	Bond lengths			Bond angles		
					Counts	RMSZ	$\# Z > 2$	Counts	RMSZ	$\# Z > 2$
4	DMS	A	904	-	3,3,3	0.46	0	3,3,3	0.65	0
4	DMS	A	905	-	3,3,3	0.47	0	3,3,3	0.79	0
2	KS3	A	901	-	27,29,29	2.49	6 (22%)	36,42,42	1.75	7 (19%)
3	PLP	A	903	1	15,15,16	2.30	3 (20%)	20,22,23	1.58	5 (25%)
2	KS3	A	902	-	27,29,29	2.88	8 (29%)	36,42,42	3.04	18 (50%)

In the following table, the Chirals column lists the number of chiral outliers, the number of chiral centers analysed, the number of these observed in the model and the number defined in the Chemical Component Dictionary. Similar counts are reported in the Torsion and Rings columns. '-' means no outliers of that kind were identified.

Mol	Type	Chain	Res	Link	Chirals	Torsions	Rings
2	KS3	A	902	-	-	2/6/30/30	0/4/4/4
2	KS3	A	901	-	-	0/6/30/30	0/4/4/4
3	PLP	A	903	1	-	2/6/6/8	0/1/1/1

All (17) bond length outliers are listed below:

Mol	Chain	Res	Type	Atoms	Z	Observed(Å)	Ideal(Å)
2	A	902	KS3	C13-C12	7.48	1.53	1.36
2	A	902	KS3	C14-C15	7.38	1.53	1.36
2	A	901	KS3	C13-C12	7.04	1.52	1.36
2	A	901	KS3	C14-C15	6.64	1.51	1.36
3	A	903	PLP	C5-C4	6.41	1.47	1.40
2	A	902	KS3	C14-C13	5.79	1.53	1.38
2	A	901	KS3	C14-C13	4.88	1.51	1.38
3	A	903	PLP	C3-C2	4.52	1.45	1.40
2	A	901	KS3	C12-C8	4.01	1.51	1.41
2	A	902	KS3	C15-C9	3.94	1.51	1.41
2	A	902	KS3	C12-C8	3.86	1.51	1.41
2	A	901	KS3	C15-C9	3.67	1.50	1.41
2	A	902	KS3	C9-C8	3.26	1.49	1.42
3	A	903	PLP	C3-C4	3.26	1.46	1.40
2	A	902	KS3	O5'-C1'	-3.00	1.40	1.44
2	A	902	KS3	C4-N3	2.43	1.36	1.33
2	A	901	KS3	C9-C8	2.19	1.47	1.42

All (30) bond angle outliers are listed below:

Mol	Chain	Res	Type	Atoms	Z	Observed(°)	Ideal(°)
2	A	902	KS3	C4-N5-C1	7.27	108.34	103.79
2	A	902	KS3	C13-C12-C8	-6.85	109.74	120.44
2	A	902	KS3	C14-C13-C12	-5.96	112.08	120.44
2	A	901	KS3	C14-C15-C9	-5.58	111.72	120.44
2	A	902	KS3	C1'-C1-N5	-5.27	114.50	124.99
2	A	902	KS3	C5'-O5'-C1'	-4.41	104.11	112.14
2	A	902	KS3	C14-C15-C9	-4.39	113.58	120.44
2	A	902	KS3	O5'-C1'-C2'	-4.32	101.80	108.91
2	A	902	KS3	C3'-C4'-C5'	-4.22	102.71	110.24
2	A	901	KS3	C4-N5-C1	4.03	106.31	103.79
2	A	901	KS3	C13-C12-C8	-3.64	114.75	120.44
2	A	902	KS3	C6-C4-N3	3.26	129.64	124.12
2	A	902	KS3	C4-N3-N2	3.01	107.23	104.70
2	A	902	KS3	C13-C14-C15	-3.01	116.22	120.44
2	A	902	KS3	O5'-C5'-C4'	-2.89	104.45	109.69

Continued on next page...

Continued from previous page...

Mol	Chain	Res	Type	Atoms	Z	Observed(°)	Ideal(°)
2	A	902	KS3	O3'-C3'-C2'	2.61	116.38	110.35
2	A	902	KS3	C3'-C2'-C1'	-2.58	103.72	109.02
3	A	903	PLP	C2A-C2-N1	2.53	122.61	117.67
3	A	903	PLP	C6-N1-C2	2.49	123.78	119.17
2	A	902	KS3	O4'-C4'-C3'	2.47	116.06	110.35
2	A	901	KS3	C12-C8-C7	-2.43	117.72	122.02
3	A	903	PLP	O4P-P-O1P	-2.42	99.69	106.47
3	A	903	PLP	O4P-C5A-C5	-2.37	104.83	109.35
2	A	901	KS3	C10-C9-C15	-2.35	117.71	123.19
2	A	901	KS3	C15-C9-C8	2.33	123.08	118.92
2	A	901	KS3	C6-C4-N5	2.31	126.60	123.71
3	A	903	PLP	C2A-C2-C3	-2.23	118.13	120.89
2	A	902	KS3	C11-C6-C7	2.20	121.54	118.09
2	A	902	KS3	C10-C9-C15	-2.20	118.06	123.19
2	A	902	KS3	C15-C9-C8	2.09	122.66	118.92

There are no chirality outliers.

All (4) torsion outliers are listed below:

Mol	Chain	Res	Type	Atoms
2	A	902	KS3	O5'-C5'-C6'-O6'
2	A	902	KS3	C4'-C5'-C6'-O6'
3	A	903	PLP	C4-C5-C5A-O4P
3	A	903	PLP	C6-C5-C5A-O4P

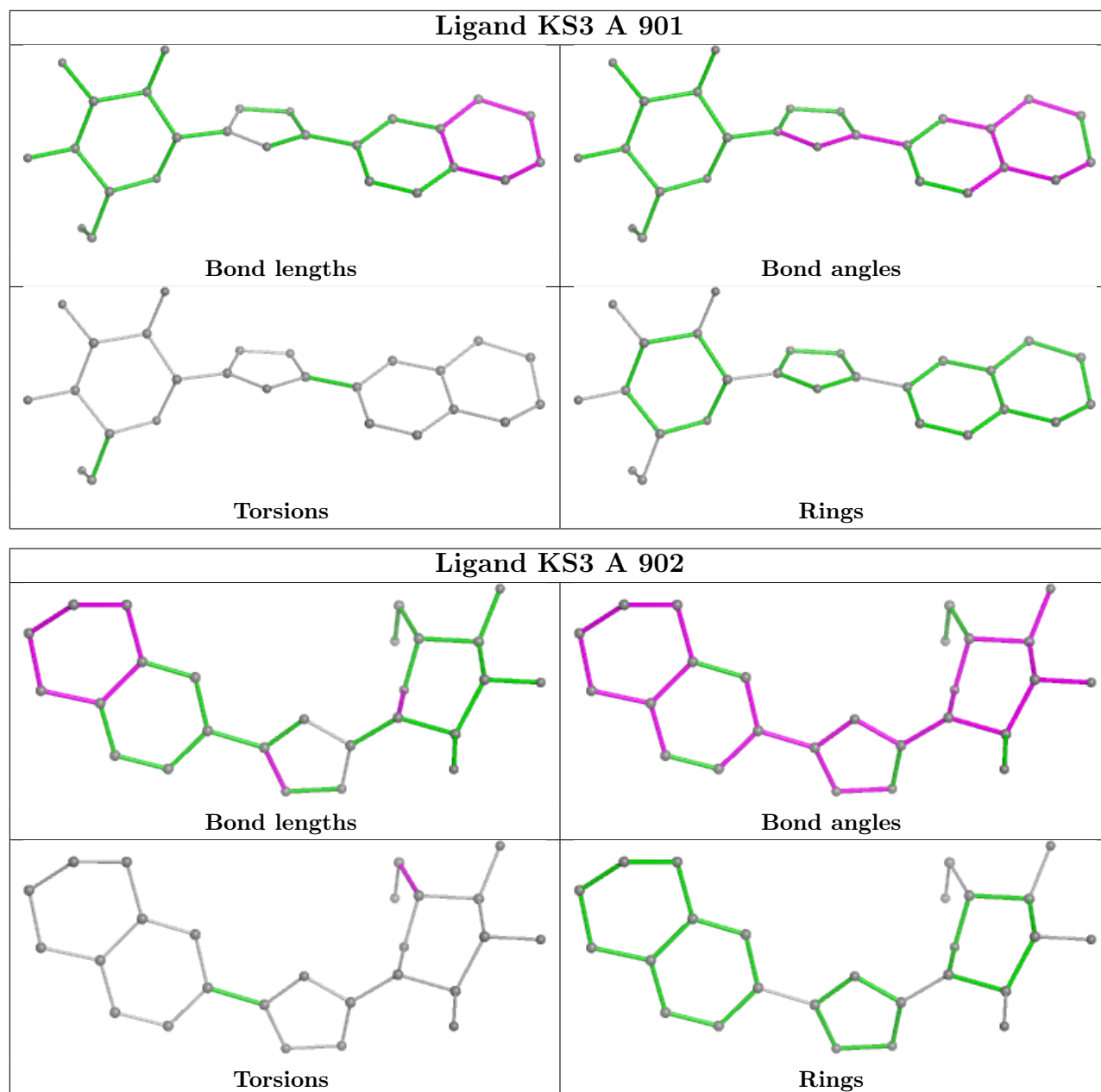
There are no ring outliers.

1 monomer is involved in 4 short contacts:

Mol	Chain	Res	Type	Clashes	Symm-Clashes
2	A	902	KS3	2	2

The following is a two-dimensional graphical depiction of Mogul quality analysis of bond lengths, bond angles, torsion angles, and ring geometry for all instances of the Ligand of Interest. In addition, ligands with molecular weight > 250 and outliers as shown on the validation Tables will also be included. For torsion angles, if less than 5% of the Mogul distribution of torsion angles is within 10 degrees of the torsion angle in question, then that torsion angle is considered an outlier. Any bond that is central to one or more torsion angles identified as an outlier by Mogul will be highlighted in the graph. For rings, the root-mean-square deviation (RMSD) between the ring in question and similar rings identified by Mogul is calculated over all ring torsion angles. If the average RMSD is greater than 60 degrees and the minimal RMSD between the ring in question and any Mogul-identified rings is also greater than 60 degrees, then that ring is considered an outlier. The outliers are highlighted in purple. The color gray indicates Mogul did not find sufficient

equivalents in the CSD to analyse the geometry.



5.7 Other polymers [i](#)

There are no such residues in this entry.

5.8 Polymer linkage issues [i](#)

There are no chain breaks in this entry.

6 Fit of model and data ⓘ

6.1 Protein, DNA and RNA chains ⓘ

In the following table, the column labelled ‘#RSRZ> 2’ contains the number (and percentage) of RSRZ outliers, followed by percent RSRZ outliers for the chain as percentile scores relative to all X-ray entries and entries of similar resolution. The OWAB column contains the minimum, median, 95th percentile and maximum values of the occupancy-weighted average B-factor per residue. The column labelled ‘Q< 0.9’ lists the number of (and percentage) of residues with an average occupancy less than 0.9.

Mol	Chain	Analysed	<RSRZ>	#RSRZ>2	OWAB(Å ²)	Q<0.9
1	A	809/842 (96%)	-0.01	31 (3%) 44 42	15, 29, 53, 96	2 (0%)

All (31) RSRZ outliers are listed below:

Mol	Chain	Res	Type	RSRZ
1	A	555	VAL	4.8
1	A	252	PHE	4.4
1	A	253	ASN	3.9
1	A	324	THR	3.9
1	A	836	ALA	3.9
1	A	556	HIS	3.7
1	A	13	ILE	3.4
1	A	553	TYR	3.4
1	A	19	ALA	2.8
1	A	211	GLN	2.7
1	A	314	SER	2.6
1	A	548	TYR	2.5
1	A	549	LEU	2.4
1	A	20	GLY	2.4
1	A	270	ASN	2.3
1	A	254	LEU	2.3
1	A	830	SER	2.3
1	A	271	LEU	2.3
1	A	21	VAL	2.2
1	A	547	ALA	2.2
1	A	423	ASP	2.2
1	A	14	SER	2.2
1	A	15	VAL	2.2
1	A	282	ASN	2.1
1	A	18	LEU	2.1
1	A	113	TYR	2.1
1	A	560	ASN	2.0

Continued on next page...

Continued from previous page...

Mol	Chain	Res	Type	RSRZ
1	A	184	ARG	2.0
1	A	75	TYR	2.0
1	A	554	LYS	2.0
1	A	753	LYS	2.0

6.2 Non-standard residues in protein, DNA, RNA chains [i](#)

There are no non-standard protein/DNA/RNA residues in this entry.

6.3 Carbohydrates [i](#)

There are no monosaccharides in this entry.

6.4 Ligands [i](#)

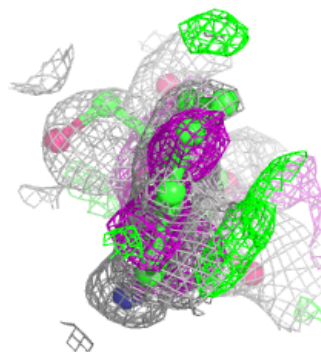
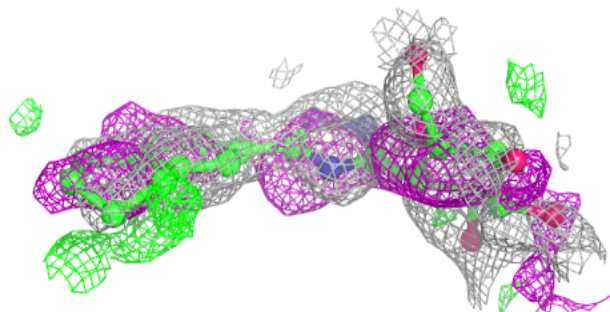
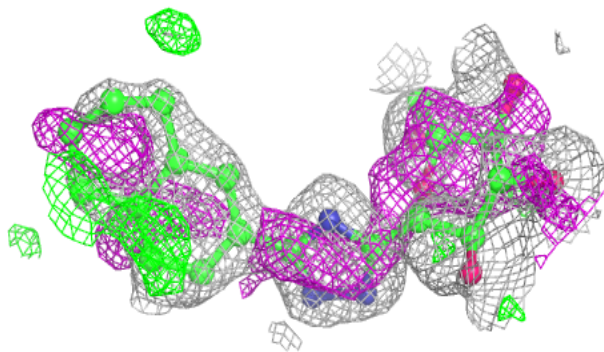
In the following table, the Atoms column lists the number of modelled atoms in the group and the number defined in the chemical component dictionary. The B-factors column lists the minimum, median, 95th percentile and maximum values of B factors of atoms in the group. The column labelled 'Q< 0.9' lists the number of atoms with occupancy less than 0.9.

Mol	Type	Chain	Res	Atoms	RSCC	RSR	B-factors(\AA^2)	Q<0.9
4	DMS	A	905	4/4	0.36	0.35	92,93,97,101	0
2	KS3	A	902	26/26	0.76	0.16	37,44,62,73	1
4	DMS	A	904	4/4	0.79	0.17	67,68,69,70	0
2	KS3	A	901	26/26	0.97	0.05	17,19,25,26	0
3	PLP	A	903	15/16	0.98	0.05	17,19,20,21	0

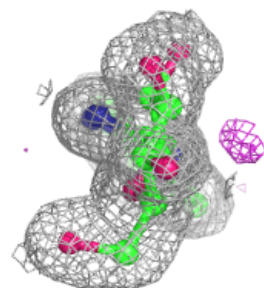
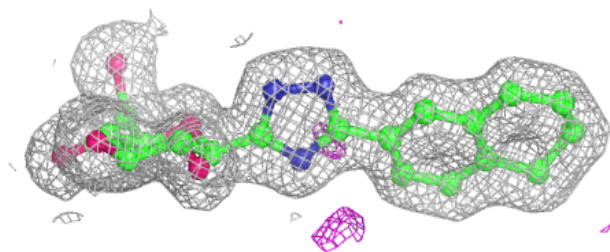
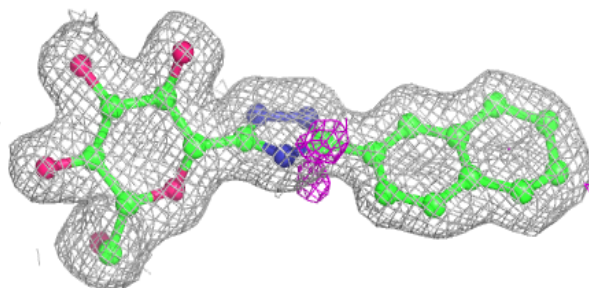
The following is a graphical depiction of the model fit to experimental electron density of all instances of the Ligand of Interest. In addition, ligands with molecular weight > 250 and outliers as shown on the geometry validation Tables will also be included. Each fit is shown from different orientation to approximate a three-dimensional view.

Electron density around KS3 A 902:

$2mF_o-DF_c$ (at 0.7 rmsd) in gray
 mF_o-DF_c (at 3 rmsd) in purple (negative)
and green (positive)

**Electron density around KS3 A 901:**

$2mF_o-DF_c$ (at 0.7 rmsd) in gray
 mF_o-DF_c (at 3 rmsd) in purple (negative)
and green (positive)



6.5 Other polymers [i](#)

There are no such residues in this entry.