



Full wwPDB X-ray Structure Validation Report ⓘ

Apr 29, 2025 – 12:18 PM EDT

PDB ID : 3MCV / pdb_00003mcv
Title : Structure of PTR1 from Trypanosoma brucei in ternary complex with 2,4-diamino-5-[2-(2,5-dimethoxyphenyl)ethyl]thieno[2,3-d]-pyrimidine and NADP+
Authors : Tulloch, L.B.; Hunter, W.N.
Deposited on : 2010-03-29
Resolution : 1.70 Å(reported)

This is a Full wwPDB X-ray Structure Validation Report for a publicly released PDB entry.

We welcome your comments at validation@mail.wwpdb.org

A user guide is available at

<https://www.wwpdb.org/validation/2017/XrayValidationReportHelp>

with specific help available everywhere you see the ⓘ symbol.

The types of validation reports are described at

<http://www.wwpdb.org/validation/2017/FAQs#types>.

The following versions of software and data (see [references ⓘ](#)) were used in the production of this report:

MolProbity : 4-5-2 with Phenix2.0rc1
Mogul : 2022.3.0, CSD as543be (2022)
Xtriage (Phenix) : 2.0rc1
EDS : 3.0
buster-report : 1.1.7 (2018)
Percentile statistics : 20231227.v01 (using entries in the PDB archive December 27th 2023)
CCP4 : 9.0.006 (Gargrove)
Density-Fitness : 1.0.12
Ideal geometry (proteins) : Engh & Huber (2001)
Ideal geometry (DNA, RNA) : Parkinson et al. (1996)
Validation Pipeline (wwPDB-VP) : 2.43.1

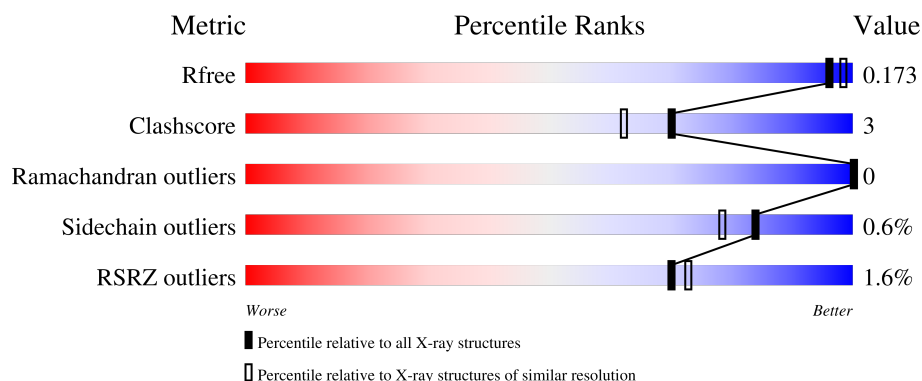
1 Overall quality at a glance

The following experimental techniques were used to determine the structure:

X-RAY DIFFRACTION

The reported resolution of this entry is 1.70 Å.

Percentile scores (ranging between 0-100) for global validation metrics of the entry are shown in the following graphic. The table shows the number of entries on which the scores are based.



Metric	Whole archive (#Entries)	Similar resolution (#Entries, resolution range(Å))
R_{free}	164625	5161 (1.70-1.70)
Clashscore	180529	5671 (1.70-1.70)
Ramachandran outliers	177936	5594 (1.70-1.70)
Sidechain outliers	177891	5594 (1.70-1.70)
RSRZ outliers	164620	5159 (1.70-1.70)

The table below summarises the geometric issues observed across the polymeric chains and their fit to the electron density. The red, orange, yellow and green segments of the lower bar indicate the fraction of residues that contain outliers for ≥ 3 , 2, 1 and 0 types of geometric quality criteria respectively. A grey segment represents the fraction of residues that are not modelled. The numeric value for each fraction is indicated below the corresponding segment, with a dot representing fractions $\leq 5\%$. The upper red bar (where present) indicates the fraction of residues that have poor fit to the electron density. The numeric value is given above the bar.

Mol	Chain	Length	Quality of chain
1	A	288	<div> <div>%</div> <div> <div></div> <div>81%</div> <div>6%</div> <div>13%</div> </div> </div>
1	B	288	<div> <div>2%</div> <div> <div></div> <div>83%</div> <div>•</div> <div>13%</div> </div> </div>
1	C	288	<div> <div>%</div> <div> <div></div> <div>80%</div> <div>6%</div> <div>14%</div> </div> </div>
1	D	288	<div> <div>%</div> <div> <div></div> <div>80%</div> <div>7%</div> <div>13%</div> </div> </div>

The following table lists non-polymeric compounds, carbohydrate monomers and non-standard

residues in protein, DNA, RNA chains that are outliers for geometric or electron-density-fit criteria:

Mol	Type	Chain	Res	Chirality	Geometry	Clashes	Electron density
4	ACT	A	270	-	-	X	-

2 Entry composition

There are 5 unique types of molecules in this entry. The entry contains 8712 atoms, of which 0 are hydrogens and 0 are deuteriums.

In the tables below, the ZeroOcc column contains the number of atoms modelled with zero occupancy, the AltConf column contains the number of residues with at least one atom in alternate conformation and the Trace column contains the number of residues modelled with at most 2 atoms.

- Molecule 1 is a protein called Pteridine reductase.

Mol	Chain	Residues	Atoms					ZeroOcc	AltConf	Trace
1	A	251	Total	C	N	O	S	0	7	0
			1905	1202	335	357	11			
1	B	251	Total	C	N	O	S	0	6	0
			1902	1199	333	358	12			
1	C	248	Total	C	N	O	S	0	9	0
			1890	1194	328	356	12			
1	D	250	Total	C	N	O	S	0	13	0
			1922	1219	333	358	12			

There are 80 discrepancies between the modelled and reference sequences:

Chain	Residue	Modelled	Actual	Comment	Reference
A	-19	MET	-	expression tag	UNP O76290
A	-18	GLY	-	expression tag	UNP O76290
A	-17	SER	-	expression tag	UNP O76290
A	-16	SER	-	expression tag	UNP O76290
A	-15	HIS	-	expression tag	UNP O76290
A	-14	HIS	-	expression tag	UNP O76290
A	-13	HIS	-	expression tag	UNP O76290
A	-12	HIS	-	expression tag	UNP O76290
A	-11	HIS	-	expression tag	UNP O76290
A	-10	HIS	-	expression tag	UNP O76290
A	-9	SER	-	expression tag	UNP O76290
A	-8	SER	-	expression tag	UNP O76290
A	-7	GLY	-	expression tag	UNP O76290
A	-6	LEU	-	expression tag	UNP O76290
A	-5	VAL	-	expression tag	UNP O76290
A	-4	PRO	-	expression tag	UNP O76290
A	-3	ARG	-	expression tag	UNP O76290
A	-2	GLY	-	expression tag	UNP O76290
A	-1	SER	-	expression tag	UNP O76290
A	0	HIS	-	expression tag	UNP O76290
B	-19	MET	-	expression tag	UNP O76290

Continued on next page...

Continued from previous page...

Chain	Residue	Modelled	Actual	Comment	Reference
B	-18	GLY	-	expression tag	UNP O76290
B	-17	SER	-	expression tag	UNP O76290
B	-16	SER	-	expression tag	UNP O76290
B	-15	HIS	-	expression tag	UNP O76290
B	-14	HIS	-	expression tag	UNP O76290
B	-13	HIS	-	expression tag	UNP O76290
B	-12	HIS	-	expression tag	UNP O76290
B	-11	HIS	-	expression tag	UNP O76290
B	-10	HIS	-	expression tag	UNP O76290
B	-9	SER	-	expression tag	UNP O76290
B	-8	SER	-	expression tag	UNP O76290
B	-7	GLY	-	expression tag	UNP O76290
B	-6	LEU	-	expression tag	UNP O76290
B	-5	VAL	-	expression tag	UNP O76290
B	-4	PRO	-	expression tag	UNP O76290
B	-3	ARG	-	expression tag	UNP O76290
B	-2	GLY	-	expression tag	UNP O76290
B	-1	SER	-	expression tag	UNP O76290
B	0	HIS	-	expression tag	UNP O76290
C	-19	MET	-	expression tag	UNP O76290
C	-18	GLY	-	expression tag	UNP O76290
C	-17	SER	-	expression tag	UNP O76290
C	-16	SER	-	expression tag	UNP O76290
C	-15	HIS	-	expression tag	UNP O76290
C	-14	HIS	-	expression tag	UNP O76290
C	-13	HIS	-	expression tag	UNP O76290
C	-12	HIS	-	expression tag	UNP O76290
C	-11	HIS	-	expression tag	UNP O76290
C	-10	HIS	-	expression tag	UNP O76290
C	-9	SER	-	expression tag	UNP O76290
C	-8	SER	-	expression tag	UNP O76290
C	-7	GLY	-	expression tag	UNP O76290
C	-6	LEU	-	expression tag	UNP O76290
C	-5	VAL	-	expression tag	UNP O76290
C	-4	PRO	-	expression tag	UNP O76290
C	-3	ARG	-	expression tag	UNP O76290
C	-2	GLY	-	expression tag	UNP O76290
C	-1	SER	-	expression tag	UNP O76290
C	0	HIS	-	expression tag	UNP O76290
D	-19	MET	-	expression tag	UNP O76290
D	-18	GLY	-	expression tag	UNP O76290
D	-17	SER	-	expression tag	UNP O76290

Continued on next page...

Chain	Residue	Modelled	Actual	Comment	Reference
D	-16	SER	-	expression tag	UNP O76290
D	-15	HIS	-	expression tag	UNP O76290
D	-14	HIS	-	expression tag	UNP O76290
D	-13	HIS	-	expression tag	UNP O76290
D	-12	HIS	-	expression tag	UNP O76290
D	-11	HIS	-	expression tag	UNP O76290
D	-10	HIS	-	expression tag	UNP O76290
D	-9	SER	-	expression tag	UNP O76290
D	-8	SER	-	expression tag	UNP O76290
D	-7	GLY	-	expression tag	UNP O76290
D	-6	LEU	-	expression tag	UNP O76290
D	-5	VAL	-	expression tag	UNP O76290
D	-4	PRO	-	expression tag	UNP O76290
D	-3	ARG	-	expression tag	UNP O76290
D	-2	GLY	-	expression tag	UNP O76290
D	-1	SER	-	expression tag	UNP O76290
D	0	HIS	-	expression tag	UNP O76290

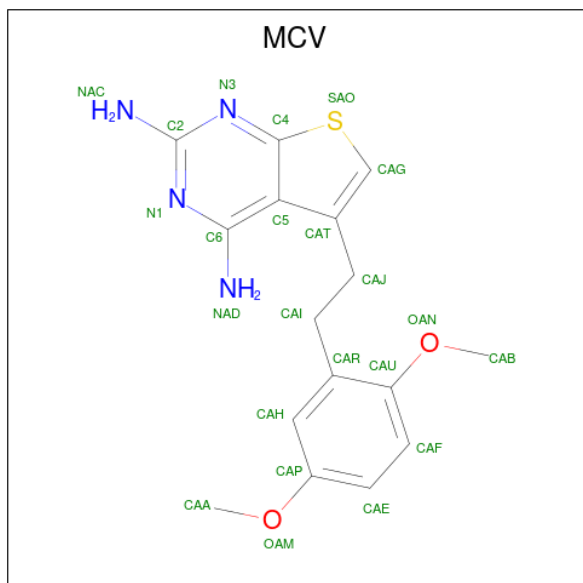
- # NAP

Continued on next page...

Continued from previous page...

Mol	Chain	Residues	Atoms					ZeroOcc	AltConf
2	C	1	Total	C	N	O	P	0	0
			48	21	7	17	3		
2	D	1	Total	C	N	O	P	0	0
			48	21	7	17	3		

- Molecule 3 is 5-[2-(2,5-dimethoxyphenyl)ethyl]thieno[2,3-d]pyrimidine-2,4-diamine (CCD ID: MCV) (formula: C₁₆H₁₈N₄O₂S).



Mol	Chain	Residues	Atoms					ZeroOcc	AltConf
3	A	1	Total	C	N	O	S	0	0
			23	16	4	2	1		
3	B	1	Total	C	N	O	S	0	0
			23	16	4	2	1		
3	C	1	Total	C	N	O	S	0	0
			23	16	4	2	1		
3	D	1	Total	C	N	O	S	0	0
			23	16	4	2	1		

- Molecule 4 is ACETATE ION (CCD ID: ACT) (formula: C₂H₃O₂).



Mol	Chain	Residues	Atoms	ZeroOcc	AltConf
4	A	1	Total C O 4 2 2	0	0
4	B	1	Total C O 4 2 2	0	0
4	B	1	Total C O 4 2 2	0	0
4	D	1	Total C O 4 2 2	0	0

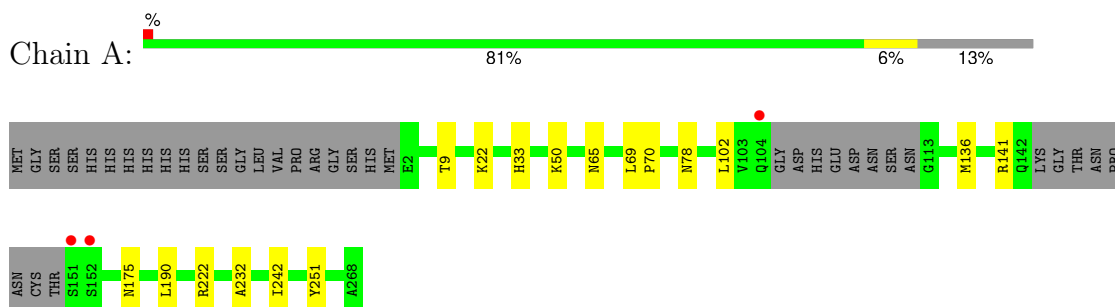
- Molecule 5 is water.

Mol	Chain	Residues	Atoms	ZeroOcc	AltConf
5	A	223	Total O 223 223	0	1
5	B	221	Total O 221 221	0	5
5	C	156	Total O 156 156	0	0
5	D	193	Total O 193 193	0	0

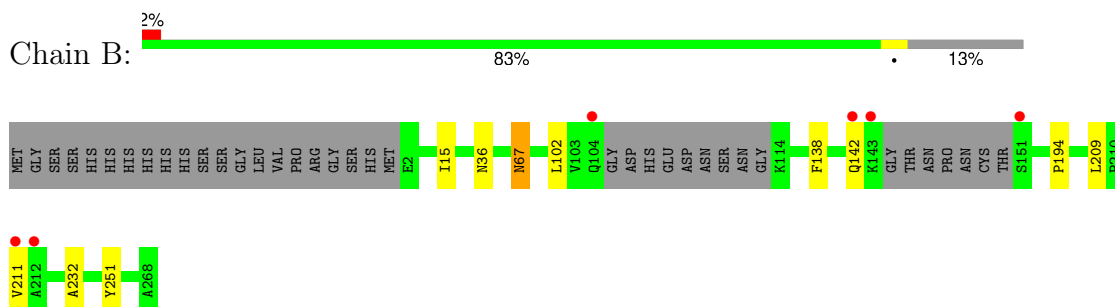
3 Residue-property plots [i](#)

These plots are drawn for all protein, RNA, DNA and oligosaccharide chains in the entry. The first graphic for a chain summarises the proportions of the various outlier classes displayed in the second graphic. The second graphic shows the sequence view annotated by issues in geometry and electron density. Residues are color-coded according to the number of geometric quality criteria for which they contain at least one outlier: green = 0, yellow = 1, orange = 2 and red = 3 or more. A red dot above a residue indicates a poor fit to the electron density ($RSRZ > 2$). Stretches of 2 or more consecutive residues without any outlier are shown as a green connector. Residues present in the sample, but not in the model, are shown in grey.

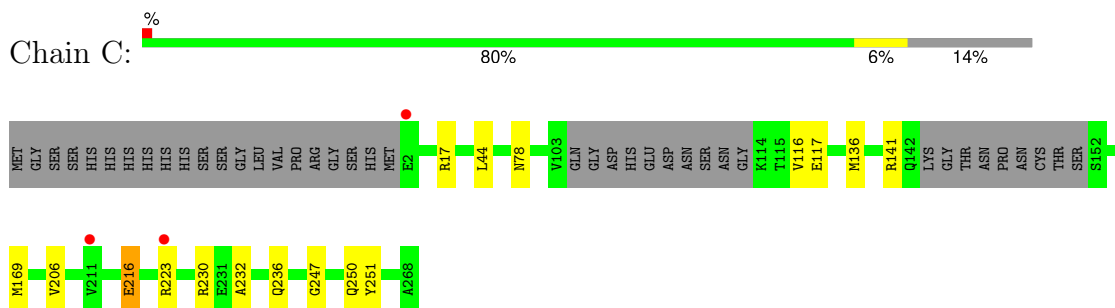
• Molecule 1: Pteridine reductase



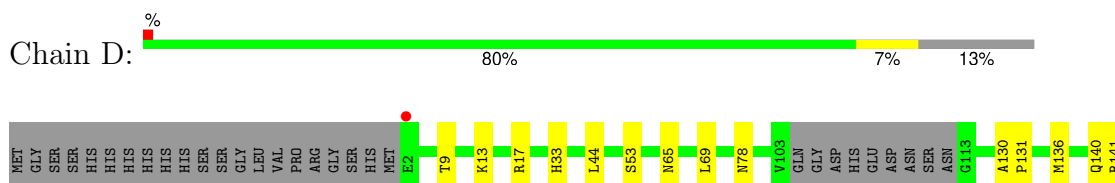
• Molecule 1: Pteridine reductase

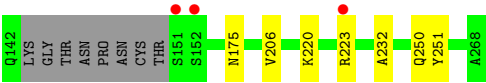


• Molecule 1: Pteridine reductase



• Molecule 1: Pteridine reductase





4 Data and refinement statistics

Property	Value	Source
Space group	P 1 21 1	Depositor
Cell constants a, b, c, α , β , γ	74.50Å 89.82Å 82.26Å 90.00° 115.49° 90.00°	Depositor
Resolution (Å)	38.98 – 1.70 38.98 – 1.70	Depositor EDS
% Data completeness (in resolution range)	98.3 (38.98-1.70) 98.3 (38.98-1.70)	Depositor EDS
R_{merge}	0.06	Depositor
R_{sym}	0.06	Depositor
$\langle I/\sigma(I) \rangle$ ¹	4.55 (at 1.70Å)	Xtriage
Refinement program	REFMAC	Depositor
R, R_{free}	0.135 , 0.167 0.145 , 0.173	Depositor DCC
R_{free} test set	5310 reflections (5.03%)	wwPDB-VP
Wilson B-factor (Å ²)	12.0	Xtriage
Anisotropy	0.945	Xtriage
Bulk solvent k_{sol} (e/Å ³), B_{sol} (Å ²)	0.37 , 46.1	EDS
L-test for twinning ²	$\langle L \rangle = 0.49$, $\langle L^2 \rangle = 0.32$	Xtriage
Estimated twinning fraction	0.012 for h,-k,-h-l	Xtriage
F_o, F_c correlation	0.96	EDS
Total number of atoms	8712	wwPDB-VP
Average B, all atoms (Å ²)	13.0	wwPDB-VP

Xtriage's analysis on translational NCS is as follows: *The analyses of the Patterson function reveals a significant off-origin peak that is 25.49 % of the origin peak, indicating pseudo-translational symmetry. The chance of finding a peak of this or larger height randomly in a structure without pseudo-translational symmetry is equal to 3.1388e-03. The detected translational NCS is most likely also responsible for the elevated intensity ratio.*

¹Intensities estimated from amplitudes.

²Theoretical values of $\langle |L| \rangle$, $\langle L^2 \rangle$ for acentric reflections are 0.5, 0.333 respectively for untwinned datasets, and 0.375, 0.2 for perfectly twinned datasets.

5 Model quality [i](#)

5.1 Standard geometry [i](#)

Bond lengths and bond angles in the following residue types are not validated in this section: MCV, NAP, ACT

The Z score for a bond length (or angle) is the number of standard deviations the observed value is removed from the expected value. A bond length (or angle) with $|Z| > 5$ is considered an outlier worth inspection. RMSZ is the root-mean-square of all Z scores of the bond lengths (or angles).

Mol	Chain	Bond lengths		Bond angles	
		RMSZ	$\# Z > 5$	RMSZ	$\# Z > 5$
1	A	0.68	0/1953	0.81	0/2648
1	B	0.72	0/1947	0.79	0/2640
1	C	0.70	0/1944	0.79	0/2638
1	D	0.66	0/1988	0.77	0/2697
All	All	0.69	0/7832	0.79	0/10623

There are no bond length outliers.

There are no bond angle outliers.

There are no chirality outliers.

There are no planarity outliers.

5.2 Too-close contacts [i](#)

In the following table, the Non-H and H(model) columns list the number of non-hydrogen atoms and hydrogen atoms in the chain respectively. The H(added) column lists the number of hydrogen atoms added and optimized by MolProbity. The Clashes column lists the number of clashes within the asymmetric unit, whereas Symm-Clashes lists symmetry-related clashes.

Mol	Chain	Non-H	H(model)	H(added)	Clashes	Symm-Clashes
1	A	1905	0	1958	12	0
1	B	1902	0	1948	10	0
1	C	1890	0	1940	16	0
1	D	1922	0	1995	18	0
2	A	48	0	25	0	0
2	B	48	0	25	1	0
2	C	48	0	25	0	0
2	D	48	0	25	0	0
3	A	23	0	18	2	0

Continued on next page...

Continued from previous page...

Mol	Chain	Non-H	H(model)	H(added)	Clashes	Symm-Clashes
3	B	23	0	18	3	0
3	C	23	0	18	3	0
3	D	23	0	18	3	0
4	A	4	0	3	2	0
4	B	8	0	6	0	0
4	D	4	0	3	0	0
5	A	223	0	0	3	0
5	B	221	0	0	3	1
5	C	156	0	0	4	1
5	D	193	0	0	3	0
All	All	8712	0	8025	53	1

The all-atom clashscore is defined as the number of clashes found per 1000 atoms (including hydrogen atoms). The all-atom clashscore for this structure is 3.

All (53) close contacts within the same asymmetric unit are listed below, sorted by their clash magnitude.

Atom-1	Atom-2	Interatomic distance (Å)	Clash overlap (Å)
1:B:211:VAL:O	5:B:517:HOH:O	2.05	0.74
1:C:78[B]:ASN:HD22	1:C:141:ARG:HH21	1.43	0.67
3:B:300:MCV:CAJ	3:B:300:MCV:HNAB	2.17	0.58
3:A:300:MCV:CAJ	3:A:300:MCV:HNAB	2.18	0.56
1:D:78[A]:ASN:ND2	5:D:484:HOH:O	2.25	0.55
1:C:236:GLN:HE21	1:D:250[B]:GLN:CD	2.14	0.55
1:D:206:VAL:HG12	3:D:300:MCV:CAB	2.38	0.54
1:A:22:LYS:HG2	1:A:242:ILE:HG12	1.91	0.52
1:C:247:GLY:O	1:C:250:GLN:HG2	2.09	0.52
3:D:300:MCV:CAJ	3:D:300:MCV:HNAB	2.24	0.50
3:C:300:MCV:CAJ	3:C:300:MCV:HNAB	2.24	0.50
4:A:270:ACT:H1	5:A:388:HOH:O	2.13	0.48
1:A:251:TYR:CE2	1:B:232:ALA:HB2	2.48	0.48
1:A:175[A]:ASN:OD1	5:A:353:HOH:O	2.20	0.48
1:A:222:ARG:HD3	4:A:270:ACT:H3	1.95	0.48
1:B:138:PHE:O	1:B:142[B]:GLN:HG2	2.14	0.48
5:C:345:HOH:O	1:D:250[B]:GLN:HG2	2.13	0.47
1:C:117[B]:GLU:OE2	5:C:322:HOH:O	2.20	0.47
1:A:9:THR:HA	1:A:33:HIS:HB3	1.96	0.47
1:B:36:ASN:O	5:B:332:HOH:O	2.20	0.47
1:D:130:ALA:HB3	1:D:131:PRO:HD3	1.96	0.47
1:D:206:VAL:HG12	3:D:300:MCV:OAN	2.15	0.47
1:B:15:ILE:HB	2:B:269:NAP:H51N	1.98	0.46

Continued on next page...

Continued from previous page...

Atom-1	Atom-2	Interatomic distance (Å)	Clash overlap (Å)
1:A:78:ASN:OD1	1:A:141:ARG:NH2	2.49	0.45
1:A:65:ASN:HA	1:A:69:LEU:HD22	1.98	0.45
1:C:232:ALA:HB2	1:D:251:TYR:CE2	2.52	0.45
1:D:13[A]:LYS:HG2	5:D:328:HOH:O	2.17	0.45
1:B:209:LEU:HD23	3:B:300:MCV:HAI	1.98	0.45
1:C:251:TYR:CE2	1:D:232:ALA:HB2	2.52	0.44
3:B:300:MCV:HNAB	3:B:300:MCV:HAJ	1.82	0.44
1:D:220:LYS:O	1:D:223:ARG:HG3	2.18	0.44
1:D:17:ARG:HG3	1:D:44:LEU:HD22	2.00	0.44
1:B:67[B]:ASN:ND2	5:B:508:HOH:O	2.43	0.43
1:A:102:LEU:O	1:C:136[B]:MET:HG3	2.18	0.43
1:C:230:ARG:NH1	5:C:358:HOH:O	2.51	0.43
5:A:517:HOH:O	1:B:194:PRO:HG3	2.19	0.43
1:C:116[B]:VAL:HG23	5:C:433:HOH:O	2.17	0.43
3:A:300:MCV:HNAB	3:A:300:MCV:HAJ	1.83	0.43
1:C:206[A]:VAL:HG12	3:C:300:MCV:OAN	2.20	0.42
1:D:65:ASN:HA	1:D:69:LEU:HD22	2.00	0.41
1:A:70:PRO:CG	1:C:117[B]:GLU:HG2	2.49	0.41
1:A:232:ALA:HB2	1:B:251:TYR:CE2	2.55	0.41
1:C:17:ARG:HG3	1:C:44:LEU:HD22	2.03	0.41
1:C:206[A]:VAL:HG12	3:C:300:MCV:CAB	2.51	0.41
1:C:232:ALA:HB2	1:D:251:TYR:CD2	2.55	0.41
1:D:9:THR:HA	1:D:33:HIS:HB3	2.03	0.41
1:A:136:MET:HE2	1:A:136:MET:HB3	1.88	0.41
1:A:190[A]:LEU:HG	1:C:169:MET:HE1	2.01	0.41
1:C:216:GLU:H	1:C:216:GLU:CD	2.29	0.41
1:D:78[B]:ASN:HD22	1:D:141:ARG:HH12	1.68	0.41
1:D:175[A]:ASN:OD1	5:D:371:HOH:O	2.22	0.40
1:B:102:LEU:O	1:D:136[B]:MET:HG3	2.21	0.40

All (1) symmetry-related close contacts are listed below. The label for Atom-2 includes the symmetry operator and encoded unit-cell translations to be applied.

Atom-1	Atom-2	Interatomic distance (Å)	Clash overlap (Å)
5:B:477:HOH:O	5:C:415:HOH:O[1_454]	2.19	0.01

5.3 Torsion angles

5.3.1 Protein backbone

In the following table, the Percentiles column shows the percent Ramachandran outliers of the chain as a percentile score with respect to all X-ray entries followed by that with respect to entries of similar resolution.

The Analysed column shows the number of residues for which the backbone conformation was analysed, and the total number of residues.

Mol	Chain	Analysed	Favoured	Allowed	Outliers	Percentiles	
1	A	252/288 (88%)	243 (96%)	9 (4%)	0	100	100
1	B	251/288 (87%)	242 (96%)	9 (4%)	0	100	100
1	C	251/288 (87%)	242 (96%)	9 (4%)	0	100	100
1	D	257/288 (89%)	248 (96%)	9 (4%)	0	100	100
All	All	1011/1152 (88%)	975 (96%)	36 (4%)	0	100	100

There are no Ramachandran outliers to report.

5.3.2 Protein sidechains

In the following table, the Percentiles column shows the percent sidechain outliers of the chain as a percentile score with respect to all X-ray entries followed by that with respect to entries of similar resolution.

The Analysed column shows the number of residues for which the sidechain conformation was analysed, and the total number of residues.

Mol	Chain	Analysed	Rotameric	Outliers	Percentiles	
1	A	206/231 (89%)	205 (100%)	1 (0%)	86	82
1	B	206/231 (89%)	204 (99%)	2 (1%)	73	64
1	C	206/231 (89%)	204 (99%)	2 (1%)	73	64
1	D	211/231 (91%)	210 (100%)	1 (0%)	86	82
All	All	829/924 (90%)	823 (99%)	6 (1%)	84	75

All (6) residues with a non-rotameric sidechain are listed below:

Mol	Chain	Res	Type
1	A	50	LYS
1	B	67[A]	ASN

Continued on next page...

Continued from previous page...

Mol	Chain	Res	Type
1	B	67[B]	ASN
1	C	216	GLU
1	C	223	ARG
1	D	53	SER

Sometimes sidechains can be flipped to improve hydrogen bonding and reduce clashes. All (13) such sidechains are listed below:

Mol	Chain	Res	Type
1	A	65	ASN
1	A	92	ASN
1	B	36	ASN
1	B	65	ASN
1	B	92	ASN
1	B	140	GLN
1	B	166	GLN
1	C	54	ASN
1	C	65	ASN
1	C	92	ASN
1	C	142	GLN
1	D	92	ASN
1	D	166	GLN

5.3.3 RNA [i](#)

There are no RNA molecules in this entry.

5.4 Non-standard residues in protein, DNA, RNA chains [i](#)

There are no non-standard protein/DNA/RNA residues in this entry.

5.5 Carbohydrates [i](#)

There are no oligosaccharides in this entry.

5.6 Ligand geometry [i](#)

12 ligands are modelled in this entry.

In the following table, the Counts columns list the number of bonds (or angles) for which Mogul statistics could be retrieved, the number of bonds (or angles) that are observed in the model and the number of bonds (or angles) that are defined in the Chemical Component Dictionary. The Link column lists molecule types, if any, to which the group is linked. The Z score for a bond length (or angle) is the number of standard deviations the observed value is removed from the expected value. A bond length (or angle) with $|Z| > 2$ is considered an outlier worth inspection. RMSZ is the root-mean-square of all Z scores of the bond lengths (or angles).

Mol	Type	Chain	Res	Link	Bond lengths			Bond angles		
					Counts	RMSZ	# $ Z > 2$	Counts	RMSZ	# $ Z > 2$
2	NAP	D	269	-	46,52,52	1.60	4 (8%)	61,80,80	1.69	8 (13%)
2	NAP	B	269	-	46,52,52	1.50	7 (15%)	61,80,80	1.62	8 (13%)
3	MCV	D	300	-	24,25,25	0.91	1 (4%)	27,35,35	2.00	4 (14%)
4	ACT	B	270	-	3,3,3	0.85	0	3,3,3	1.06	0
4	ACT	D	270	-	3,3,3	0.78	0	3,3,3	0.89	0
4	ACT	B	271	-	3,3,3	0.84	0	3,3,3	1.46	0
4	ACT	A	270	-	3,3,3	0.73	0	3,3,3	1.03	0
3	MCV	C	300	-	24,25,25	0.93	1 (4%)	27,35,35	2.07	7 (25%)
2	NAP	A	269	-	46,52,52	1.64	6 (13%)	61,80,80	1.67	11 (18%)
3	MCV	A	300	-	24,25,25	0.99	2 (8%)	27,35,35	1.76	5 (18%)
2	NAP	C	269	-	46,52,52	1.45	3 (6%)	61,80,80	1.80	10 (16%)
3	MCV	B	300	-	24,25,25	0.95	1 (4%)	27,35,35	2.15	6 (22%)

In the following table, the Chirals column lists the number of chiral outliers, the number of chiral centers analysed, the number of these observed in the model and the number defined in the Chemical Component Dictionary. Similar counts are reported in the Torsion and Rings columns. '-' means no outliers of that kind were identified.

Mol	Type	Chain	Res	Link	Chirals	Torsions	Rings
2	NAP	D	269	-	-	0/31/67/67	0/5/5/5
2	NAP	B	269	-	-	0/31/67/67	0/5/5/5
3	MCV	D	300	-	-	4/9/9/9	0/3/3/3
3	MCV	C	300	-	-	4/9/9/9	0/3/3/3
2	NAP	A	269	-	-	0/31/67/67	0/5/5/5
3	MCV	A	300	-	-	4/9/9/9	0/3/3/3
2	NAP	C	269	-	-	0/31/67/67	0/5/5/5
3	MCV	B	300	-	-	4/9/9/9	0/3/3/3

All (25) bond length outliers are listed below:

Mol	Chain	Res	Type	Atoms	Z	Observed(Å)	Ideal(Å)
2	D	269	NAP	O7N-C7N	7.75	1.38	1.24

Continued on next page...

Continued from previous page...

Mol	Chain	Res	Type	Atoms	Z	Observed(Å)	Ideal(Å)
2	A	269	NAP	O7N-C7N	7.54	1.38	1.24
2	C	269	NAP	O7N-C7N	6.52	1.36	1.24
2	B	269	NAP	O7N-C7N	6.01	1.35	1.24
2	C	269	NAP	C2A-N3A	4.14	1.38	1.32
2	B	269	NAP	C2A-N3A	3.82	1.38	1.32
2	A	269	NAP	C2A-N3A	3.80	1.38	1.32
2	D	269	NAP	C2A-N3A	3.34	1.37	1.32
2	A	269	NAP	C2N-N1N	3.08	1.38	1.35
3	C	300	MCV	CAG-CAT	-3.07	1.35	1.37
2	A	269	NAP	C2A-N1A	3.03	1.39	1.33
2	C	269	NAP	C2A-N1A	2.83	1.39	1.33
2	B	269	NAP	C2N-N1N	2.73	1.38	1.35
2	B	269	NAP	C2A-N1A	2.68	1.38	1.33
3	B	300	MCV	CAG-SAO	2.64	1.74	1.70
3	A	300	MCV	CAG-SAO	2.60	1.74	1.70
2	B	269	NAP	PN-O3	2.57	1.62	1.59
2	D	269	NAP	C2A-N1A	2.56	1.38	1.33
3	D	300	MCV	CAG-SAO	2.53	1.74	1.70
3	A	300	MCV	CAG-CAT	-2.44	1.35	1.37
2	A	269	NAP	P2B-O2B	2.41	1.63	1.59
2	B	269	NAP	O4D-C1D	2.29	1.43	1.40
2	D	269	NAP	PN-O3	2.23	1.61	1.59
2	B	269	NAP	O4B-C4B	-2.06	1.40	1.45
2	A	269	NAP	PN-O3	2.03	1.61	1.59

All (59) bond angle outliers are listed below:

Mol	Chain	Res	Type	Atoms	Z	Observed(°)	Ideal(°)
2	A	269	NAP	N3A-C2A-N1A	-6.64	119.66	128.67
2	D	269	NAP	N3A-C2A-N1A	-6.31	120.11	128.67
2	C	269	NAP	N3A-C2A-N1A	-6.05	120.46	128.67
2	C	269	NAP	C4B-O4B-C1B	-5.90	104.52	109.92
3	B	300	MCV	N3-C2-N1	-5.79	119.84	127.21
2	A	269	NAP	C4B-O4B-C1B	-5.61	104.78	109.92
2	C	269	NAP	O4B-C1B-N9A	5.39	115.89	108.75
2	D	269	NAP	O4B-C1B-N9A	5.37	115.87	108.75
3	C	300	MCV	N3-C2-N1	-5.26	120.53	127.21
2	D	269	NAP	C3N-C7N-N7N	5.07	123.99	117.74
3	C	300	MCV	CAG-SAO-C4	5.07	97.24	91.12
3	D	300	MCV	N3-C2-N1	-5.06	120.78	127.21
2	B	269	NAP	N3A-C2A-N1A	-4.95	121.95	128.67
2	B	269	NAP	O4B-C1B-N9A	4.95	115.30	108.75

Continued on next page...

Continued from previous page...

Mol	Chain	Res	Type	Atoms	Z	Observed(°)	Ideal(°)
2	A	269	NAP	O4B-C1B-N9A	4.84	115.17	108.75
3	D	300	MCV	CAG-SAO-C4	4.54	96.60	91.12
3	D	300	MCV	C2-N3-C4	4.53	120.36	115.48
2	B	269	NAP	C3N-C7N-N7N	4.47	123.25	117.74
3	B	300	MCV	NAC-C2-N1	4.31	123.68	117.22
3	B	300	MCV	C2-N3-C4	4.27	120.08	115.48
3	A	300	MCV	N3-C2-N1	-4.26	121.79	127.21
2	B	269	NAP	O7N-C7N-C3N	-4.22	114.44	119.60
3	B	300	MCV	CAG-SAO-C4	4.15	96.13	91.12
2	D	269	NAP	C4B-O4B-C1B	-4.08	106.19	109.92
2	B	269	NAP	C4B-O4B-C1B	-4.04	106.23	109.92
2	C	269	NAP	C3N-C7N-N7N	4.01	122.68	117.74
3	A	300	MCV	CAG-SAO-C4	3.96	95.89	91.12
3	D	300	MCV	CAT-CAG-SAO	-3.95	108.05	112.26
2	C	269	NAP	O7N-C7N-C3N	-3.87	114.87	119.60
3	C	300	MCV	CAT-CAG-SAO	-3.78	108.23	112.26
3	A	300	MCV	C2-N3-C4	3.53	119.29	115.48
3	C	300	MCV	C2-N3-C4	3.51	119.27	115.48
2	C	269	NAP	C2B-C1B-N9A	-3.31	105.20	112.56
3	A	300	MCV	CAT-CAG-SAO	-3.30	108.74	112.26
2	D	269	NAP	C1B-N9A-C4A	-3.27	120.90	126.64
2	B	269	NAP	C4D-O4D-C1D	-3.10	107.09	109.92
3	A	300	MCV	NAC-C2-N1	3.04	121.79	117.22
2	C	269	NAP	C1B-N9A-C4A	-2.92	121.51	126.64
2	D	269	NAP	O7N-C7N-C3N	-2.88	116.08	119.60
3	B	300	MCV	CAT-CAG-SAO	-2.87	109.21	112.26
2	A	269	NAP	C2B-C1B-N9A	-2.84	106.26	112.56
2	A	269	NAP	C3N-C7N-N7N	2.75	121.12	117.74
2	B	269	NAP	C2B-C1B-N9A	-2.60	106.78	112.56
3	C	300	MCV	NAC-C2-N1	2.59	121.11	117.22
2	A	269	NAP	C1B-N9A-C4A	-2.54	122.19	126.64
2	A	269	NAP	O7N-C7N-C3N	-2.40	116.67	119.60
3	B	300	MCV	C2-N1-C6	2.39	123.55	116.72
3	C	300	MCV	CAB-OAN-CAU	-2.36	114.06	117.51
2	D	269	NAP	C2B-C1B-N9A	-2.30	107.44	112.56
2	C	269	NAP	C5A-C6A-N6A	2.28	123.79	120.31
2	A	269	NAP	C5N-C4N-C3N	-2.20	118.20	120.36
2	C	269	NAP	C6N-N1N-C2N	2.16	123.72	121.88
2	A	269	NAP	C2N-C3N-C4N	2.15	120.76	118.26
2	A	269	NAP	O2B-P2B-O1X	-2.14	101.72	109.33
2	C	269	NAP	C2N-C3N-C4N	2.12	120.73	118.26
2	D	269	NAP	O2N-PN-O1N	2.12	122.31	112.44

Continued on next page...

Continued from previous page...

Mol	Chain	Res	Type	Atoms	Z	Observed(°)	Ideal(°)
2	A	269	NAP	C4D-O4D-C1D	-2.10	108.00	109.92
3	C	300	MCV	C2-N1-C6	2.06	122.59	116.72
2	B	269	NAP	C5A-C6A-N6A	2.04	123.42	120.31

There are no chirality outliers.

All (16) torsion outliers are listed below:

Mol	Chain	Res	Type	Atoms
3	A	300	MCV	CAJ-CAI-CAR-CAU
3	C	300	MCV	CAJ-CAI-CAR-CAU
3	A	300	MCV	CAJ-CAI-CAR-CAH
3	B	300	MCV	CAI-CAJ-CAT-C5
3	C	300	MCV	CAI-CAJ-CAT-C5
3	C	300	MCV	CAJ-CAI-CAR-CAH
3	D	300	MCV	CAJ-CAI-CAR-CAH
3	B	300	MCV	CAJ-CAI-CAR-CAU
3	D	300	MCV	CAJ-CAI-CAR-CAU
3	A	300	MCV	CAR-CAI-CAJ-CAT
3	A	300	MCV	CAI-CAJ-CAT-C5
3	D	300	MCV	CAI-CAJ-CAT-C5
3	B	300	MCV	CAR-CAI-CAJ-CAT
3	B	300	MCV	CAJ-CAI-CAR-CAH
3	D	300	MCV	CAR-CAI-CAJ-CAT
3	C	300	MCV	CAR-CAI-CAJ-CAT

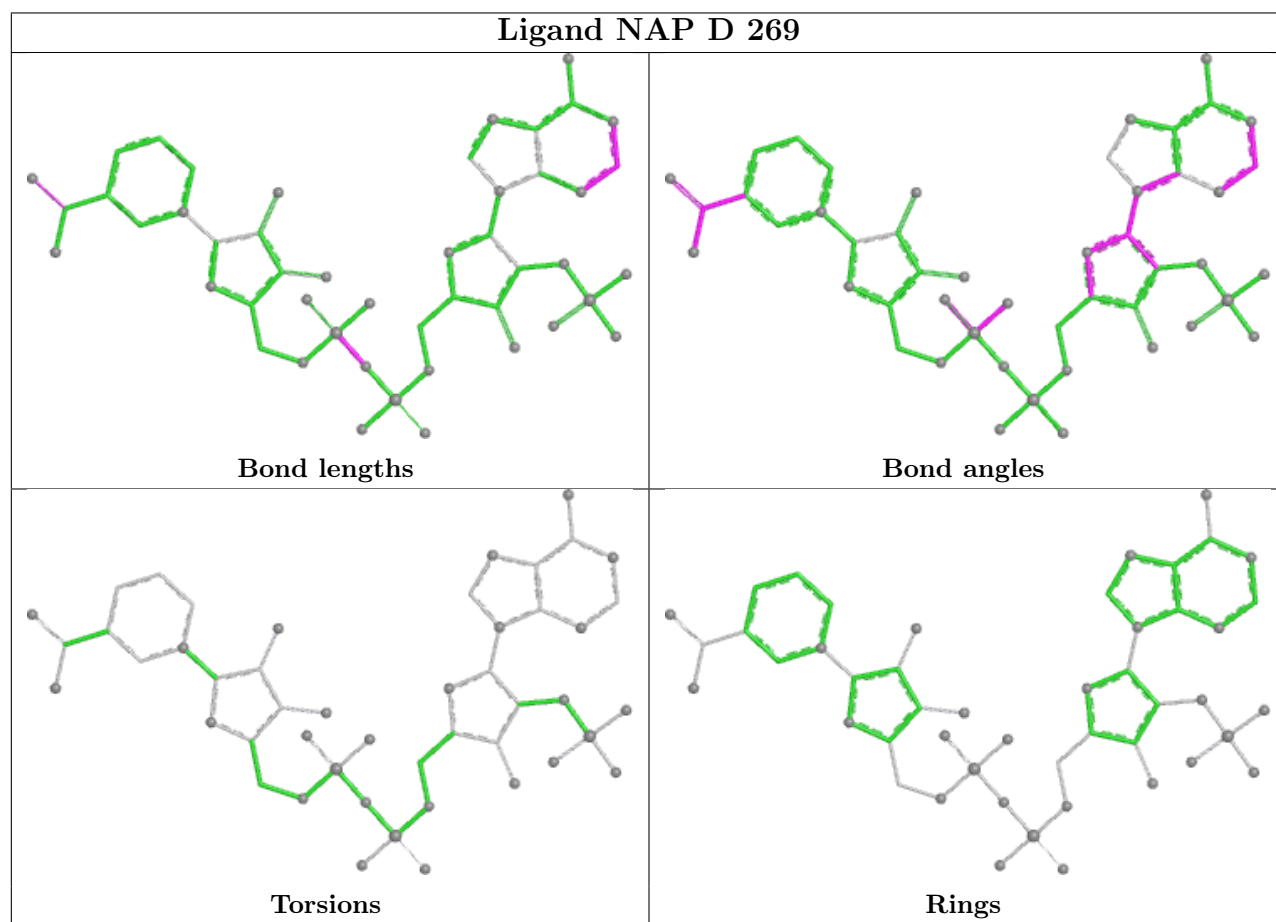
There are no ring outliers.

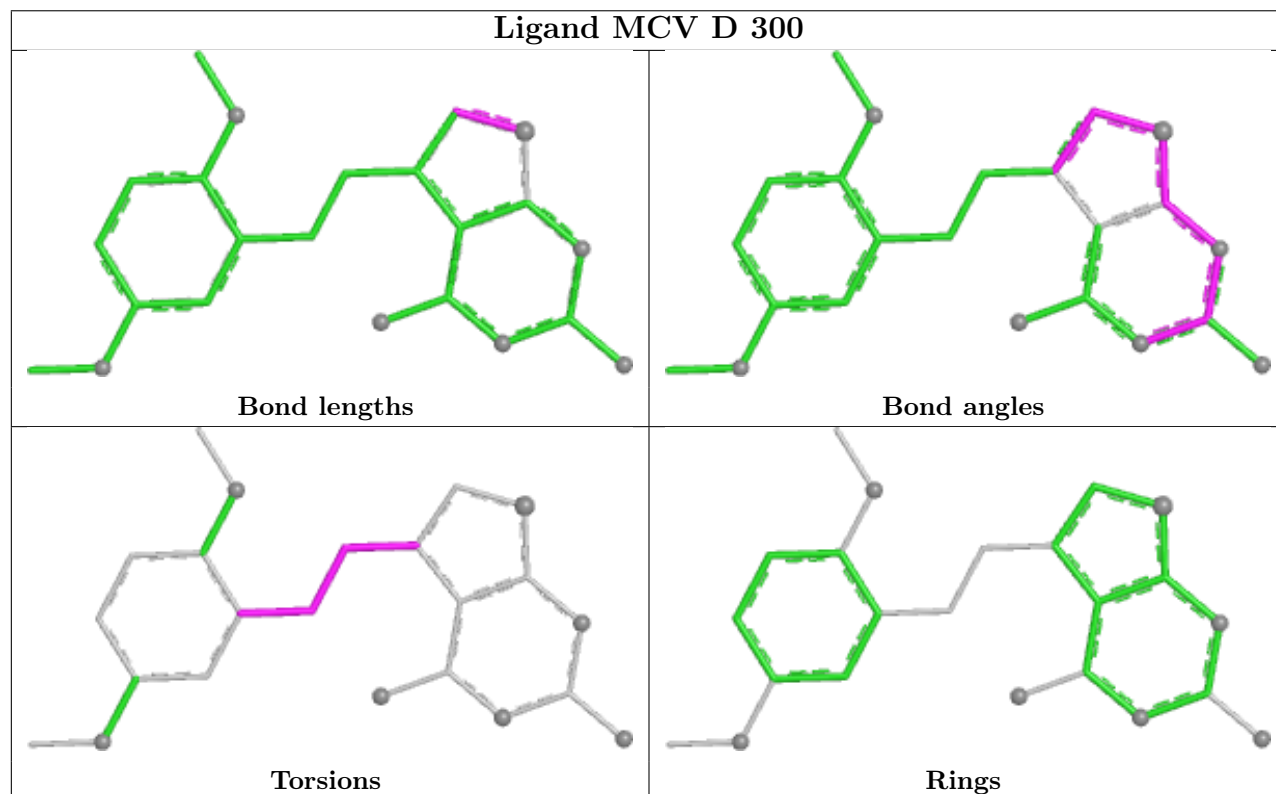
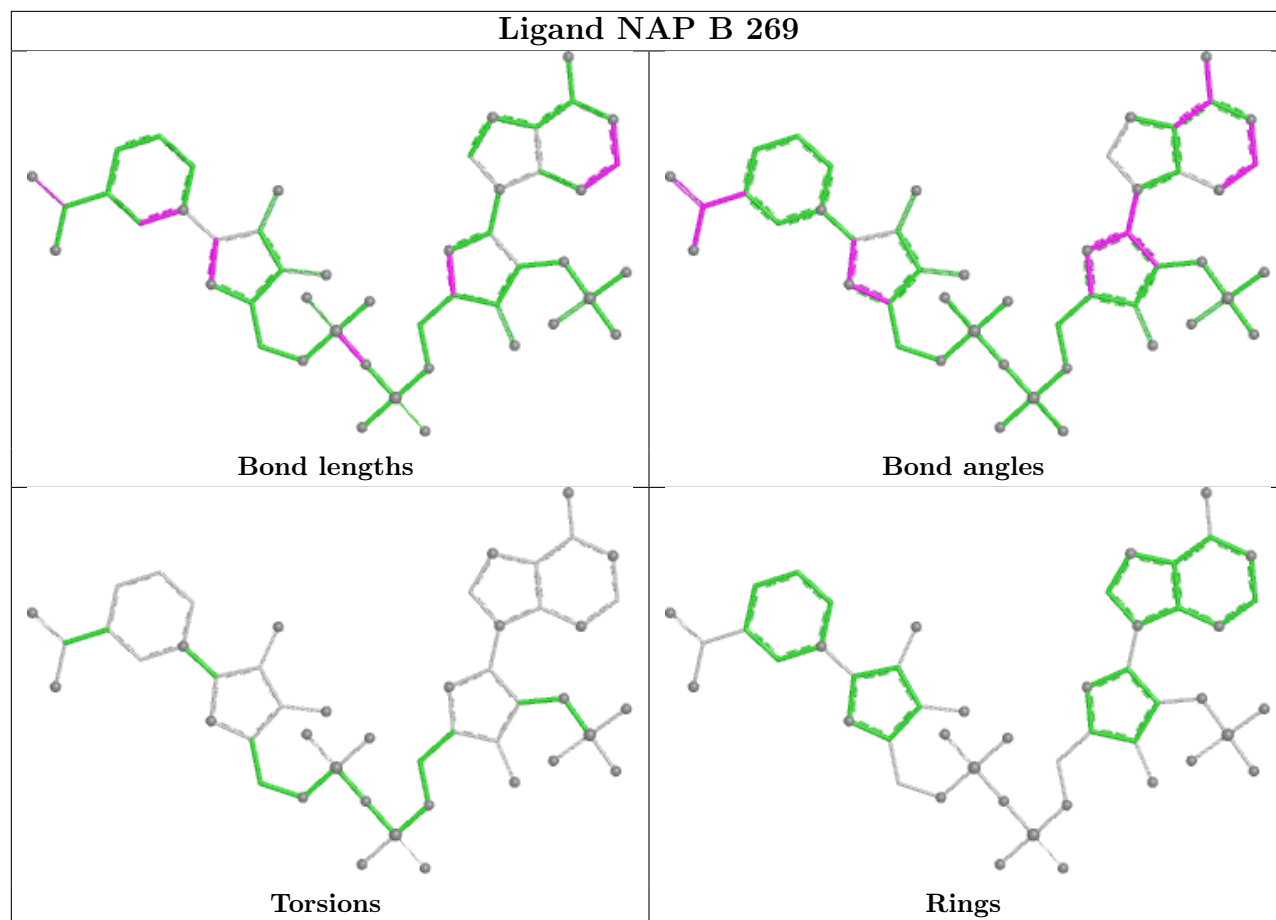
6 monomers are involved in 14 short contacts:

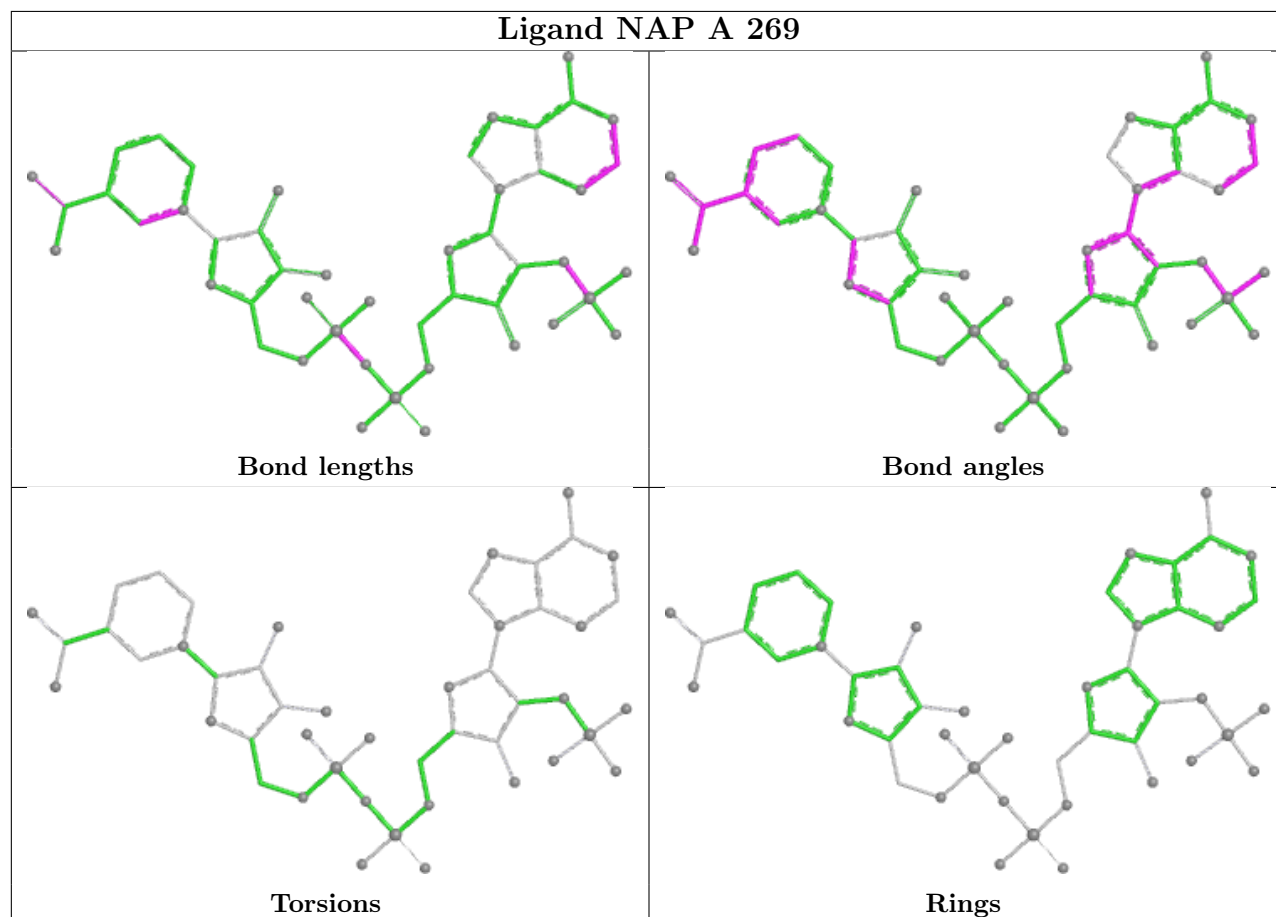
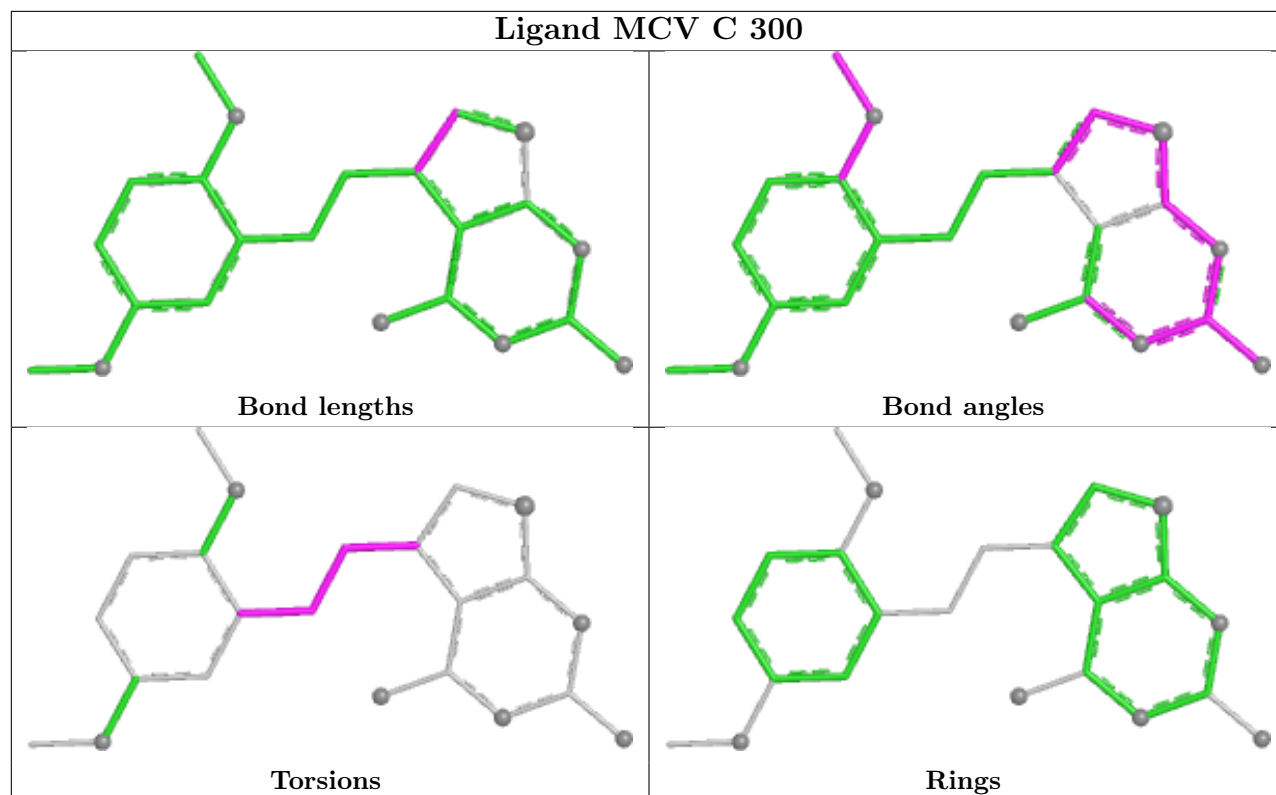
Mol	Chain	Res	Type	Clashes	Symm-Clashes
2	B	269	NAP	1	0
3	D	300	MCV	3	0
4	A	270	ACT	2	0
3	C	300	MCV	3	0
3	A	300	MCV	2	0
3	B	300	MCV	3	0

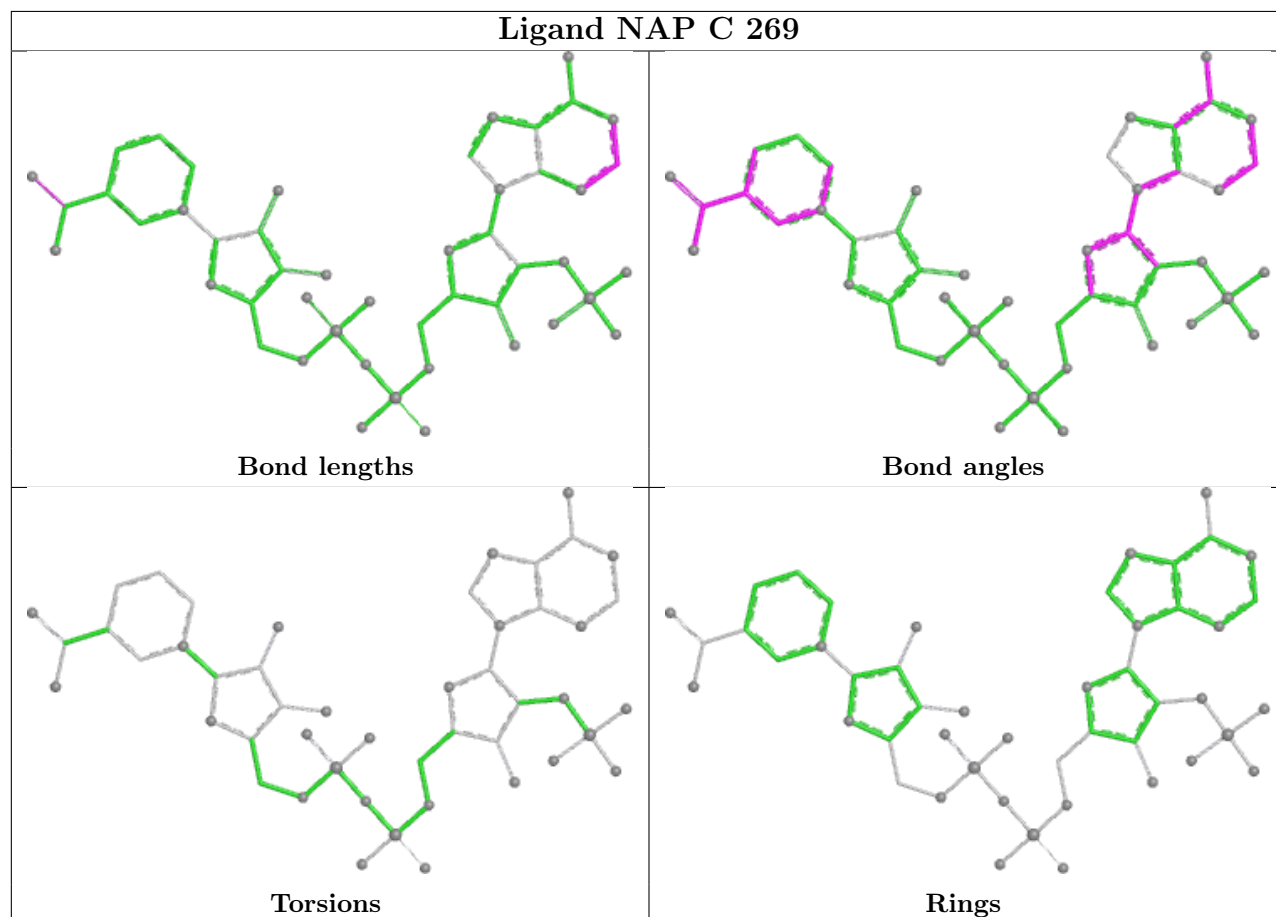
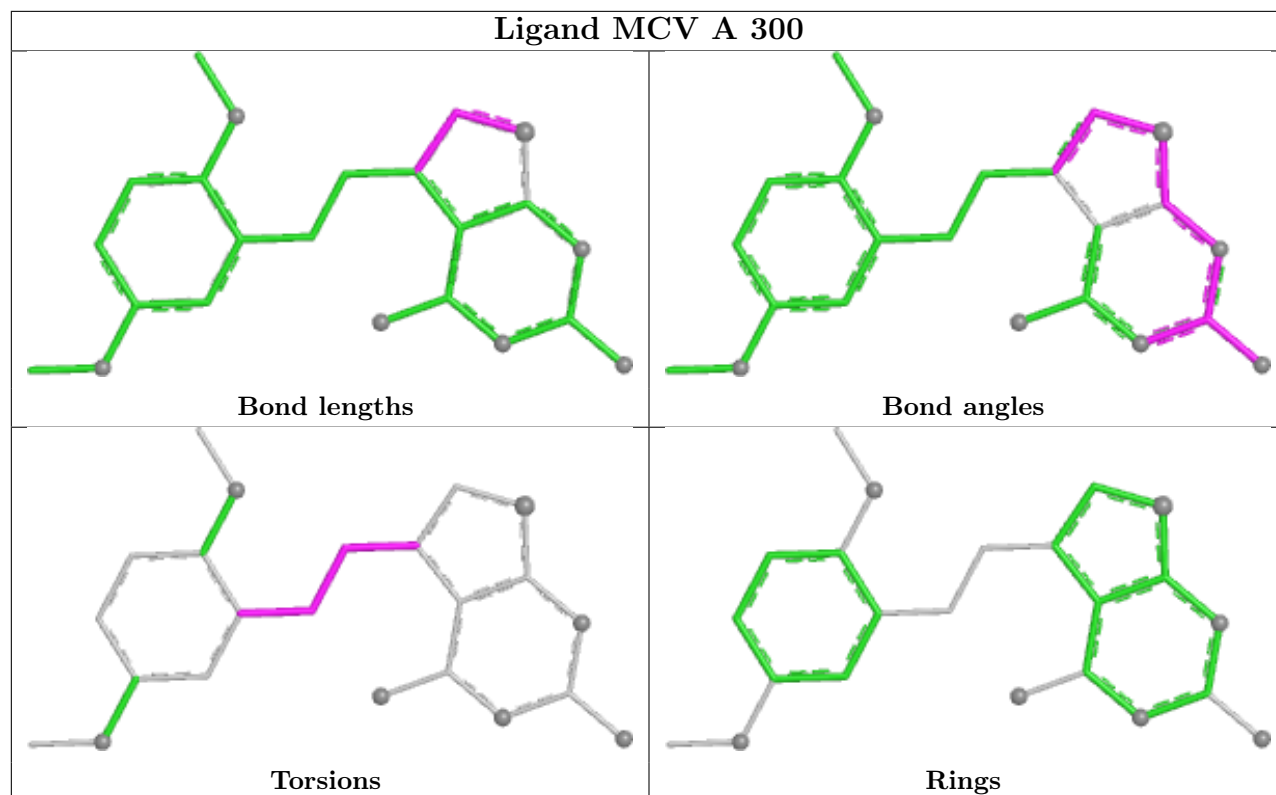
The following is a two-dimensional graphical depiction of Mogul quality analysis of bond lengths, bond angles, torsion angles, and ring geometry for all instances of the Ligand of Interest. In addition, ligands with molecular weight > 250 and outliers as shown on the validation Tables will also be included. For torsion angles, if less than 5% of the Mogul distribution of torsion angles is within 10 degrees of the torsion angle in question, then that torsion angle is considered an outlier. Any bond that is central to one or more torsion angles identified as an outlier by Mogul will be

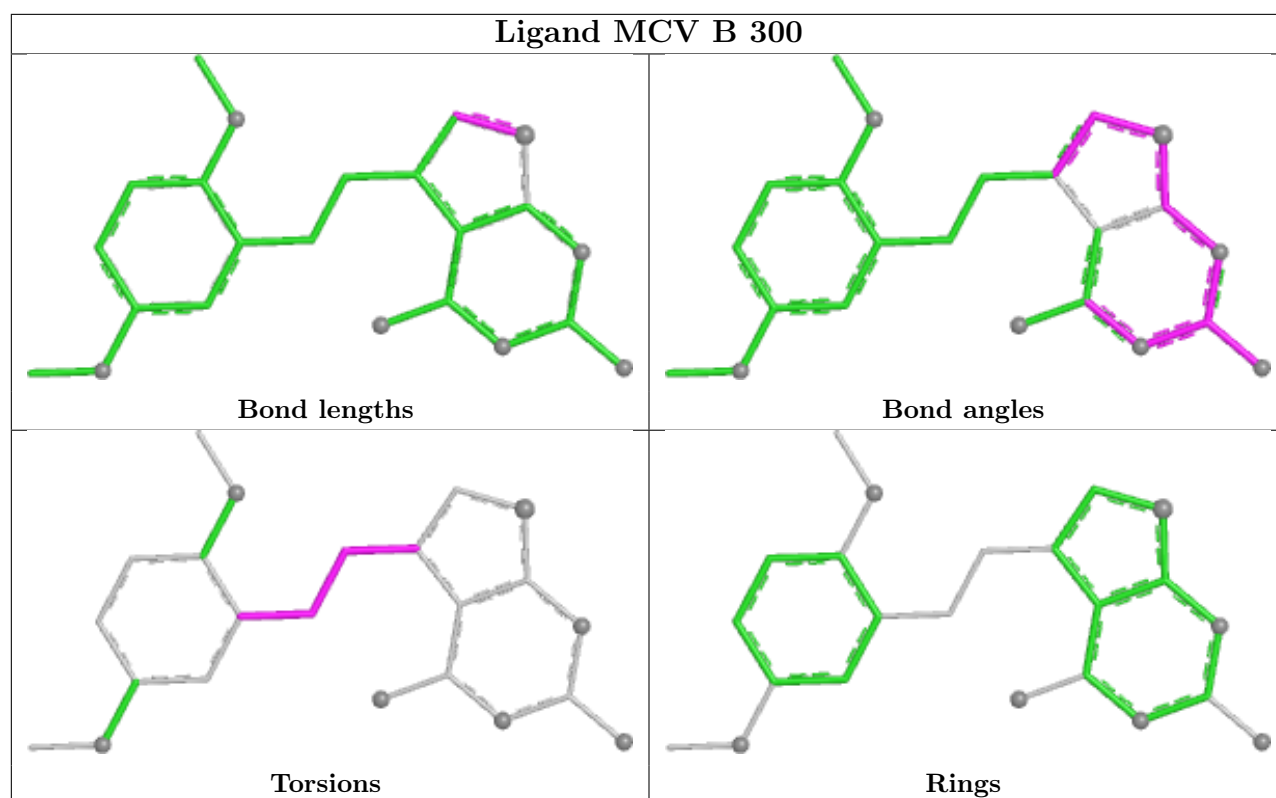
highlighted in the graph. For rings, the root-mean-square deviation (RMSD) between the ring in question and similar rings identified by Mogul is calculated over all ring torsion angles. If the average RMSD is greater than 60 degrees and the minimal RMSD between the ring in question and any Mogul-identified rings is also greater than 60 degrees, then that ring is considered an outlier. The outliers are highlighted in purple. The color gray indicates Mogul did not find sufficient equivalents in the CSD to analyse the geometry.











5.7 Other polymers [i](#)

There are no such residues in this entry.

5.8 Polymer linkage issues [i](#)

There are no chain breaks in this entry.

6 Fit of model and data [i](#)

6.1 Protein, DNA and RNA chains [i](#)

In the following table, the column labelled ‘#RSRZ> 2’ contains the number (and percentage) of RSRZ outliers, followed by percent RSRZ outliers for the chain as percentile scores relative to all X-ray entries and entries of similar resolution. The OWAB column contains the minimum, median, 95th percentile and maximum values of the occupancy-weighted average B-factor per residue. The column labelled ‘Q< 0.9’ lists the number of (and percentage) of residues with an average occupancy less than 0.9.

Mol	Chain	Analysed	<RSRZ>	#RSRZ>2	OWAB(Å ²)	Q<0.9
1	A	251/288 (87%)	-0.41	3 (1%) 76 79	5, 10, 22, 38	9 (3%)
1	B	251/288 (87%)	-0.45	6 (2%) 59 62	5, 10, 23, 45	6 (2%)
1	C	248/288 (86%)	-0.30	3 (1%) 76 79	5, 11, 23, 44	12 (4%)
1	D	250/288 (86%)	-0.15	4 (1%) 70 73	5, 11, 23, 44	18 (7%)
All	All	1000/1152 (86%)	-0.33	16 (1%) 70 73	5, 10, 23, 45	45 (4%)

All (16) RSRZ outliers are listed below:

Mol	Chain	Res	Type	RSRZ
1	A	104	GLN	3.7
1	D	151	SER	3.2
1	D	152	SER	3.1
1	D	2	GLU	3.0
1	B	211	VAL	2.9
1	B	212	ALA	2.7
1	B	143	LYS	2.7
1	C	223	ARG	2.6
1	A	151	SER	2.5
1	B	151	SER	2.5
1	C	2	GLU	2.3
1	A	152	SER	2.2
1	B	104	GLN	2.2
1	B	142[A]	GLN	2.1
1	D	223	ARG	2.1
1	C	211	VAL	2.0

6.2 Non-standard residues in protein, DNA, RNA chains [i](#)

There are no non-standard protein/DNA/RNA residues in this entry.

6.3 Carbohydrates [i](#)

There are no monosaccharides in this entry.

6.4 Ligands [i](#)

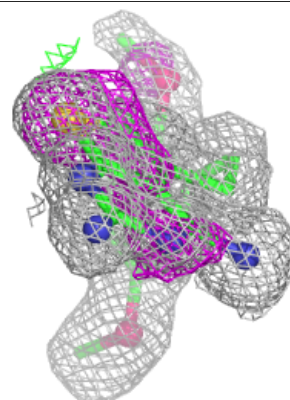
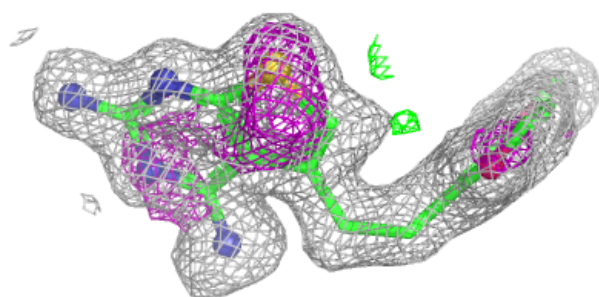
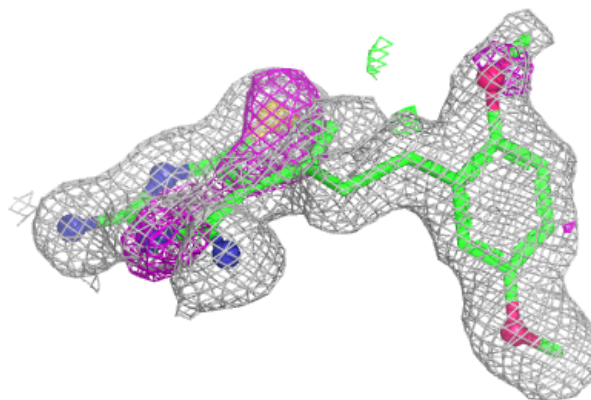
In the following table, the Atoms column lists the number of modelled atoms in the group and the number defined in the chemical component dictionary. The B-factors column lists the minimum, median, 95th percentile and maximum values of B factors of atoms in the group. The column labelled 'Q< 0.9' lists the number of atoms with occupancy less than 0.9.

Mol	Type	Chain	Res	Atoms	RSCC	RSR	B-factors(Å ²)	Q<0.9
4	ACT	A	270	4/4	0.84	0.20	19,26,30,36	0
4	ACT	D	270	4/4	0.90	0.14	19,26,28,32	0
4	ACT	B	271	4/4	0.92	0.14	16,18,21,21	0
3	MCV	D	300	23/23	0.92	0.10	11,18,26,27	0
3	MCV	B	300	23/23	0.94	0.09	9,16,27,32	0
3	MCV	C	300	23/23	0.95	0.08	11,19,24,27	0
3	MCV	A	300	23/23	0.96	0.07	8,13,19,20	0
2	NAP	D	269	48/48	0.98	0.05	7,9,12,15	0
2	NAP	A	269	48/48	0.98	0.04	6,8,10,11	0
2	NAP	B	269	48/48	0.98	0.04	6,8,10,12	0
2	NAP	C	269	48/48	0.98	0.05	7,11,13,14	0
4	ACT	B	270	4/4	0.99	0.05	10,12,13,14	0

The following is a graphical depiction of the model fit to experimental electron density of all instances of the Ligand of Interest. In addition, ligands with molecular weight > 250 and outliers as shown on the geometry validation Tables will also be included. Each fit is shown from different orientation to approximate a three-dimensional view.

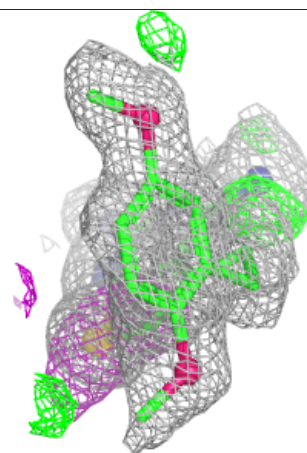
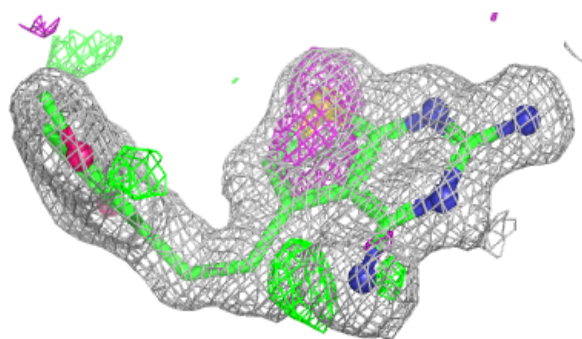
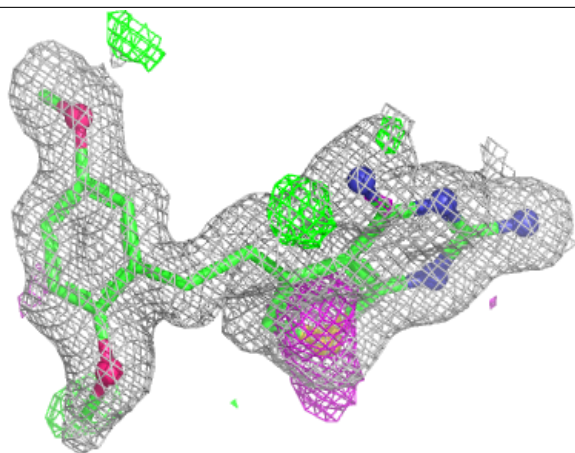
Electron density around MCV D 300:

$2mF_o - DF_c$ (at 0.7 rmsd) in gray
 $mF_o - DF_c$ (at 3 rmsd) in purple (negative)
and green (positive)

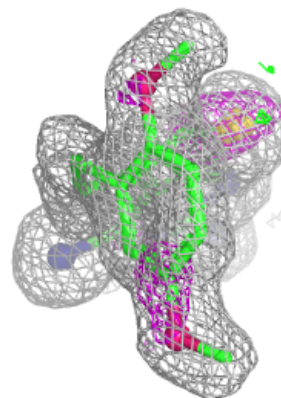
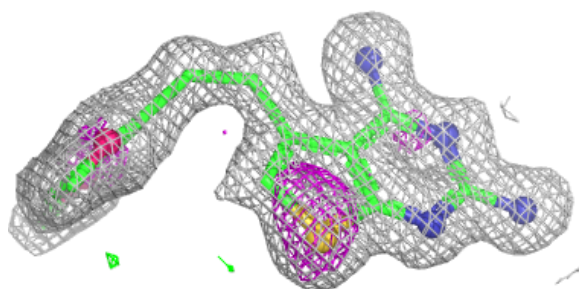
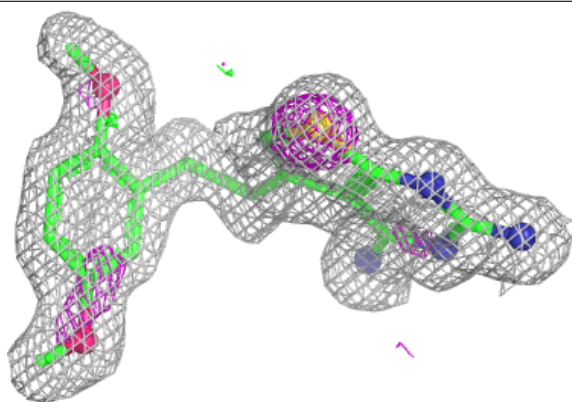


Electron density around MCV B 300:

$2mF_o-DF_c$ (at 0.7 rmsd) in gray
 mF_o-DF_c (at 3 rmsd) in purple (negative)
and green (positive)

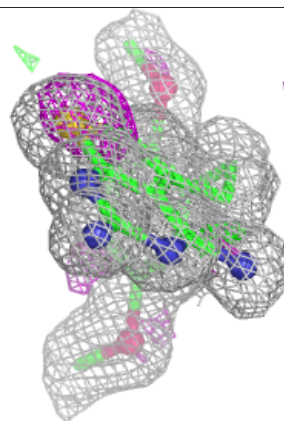
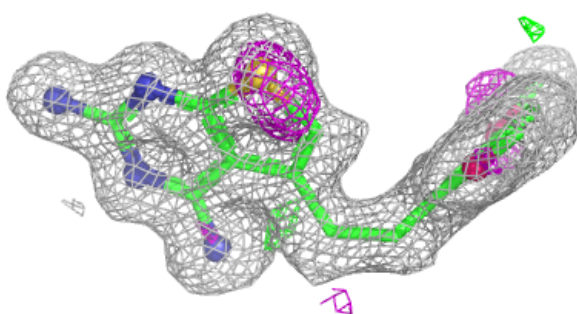
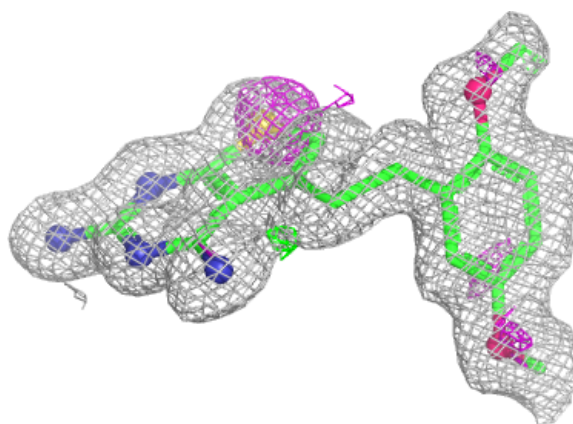
**Electron density around MCV C 300:**

$2mF_o-DF_c$ (at 0.7 rmsd) in gray
 mF_o-DF_c (at 3 rmsd) in purple (negative)
and green (positive)

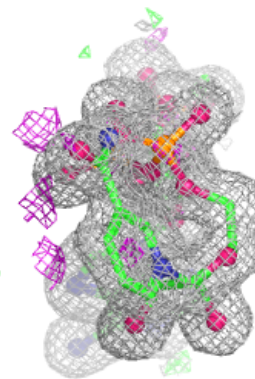
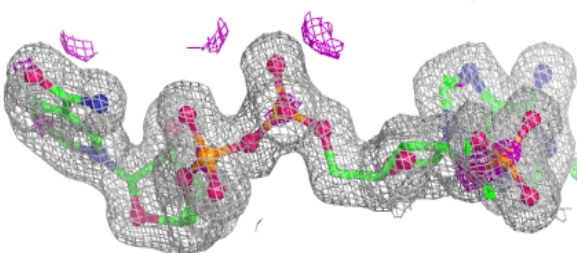
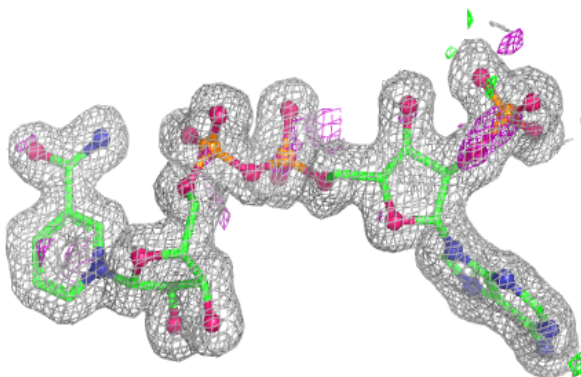


Electron density around MCV A 300:

$2mF_o-DF_c$ (at 0.7 rmsd) in gray
 mF_o-DF_c (at 3 rmsd) in purple (negative)
and green (positive)

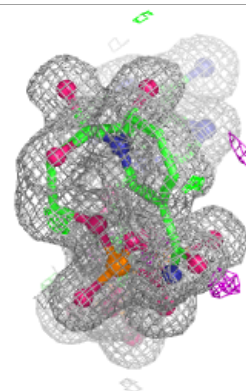
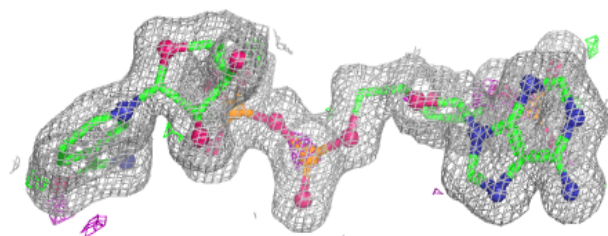
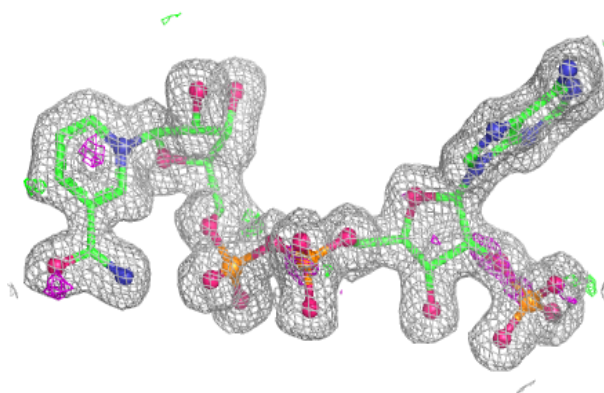
**Electron density around NAP D 269:**

$2mF_o-DF_c$ (at 0.7 rmsd) in gray
 mF_o-DF_c (at 3 rmsd) in purple (negative)
and green (positive)

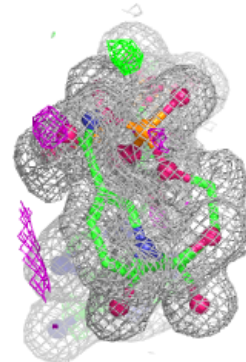
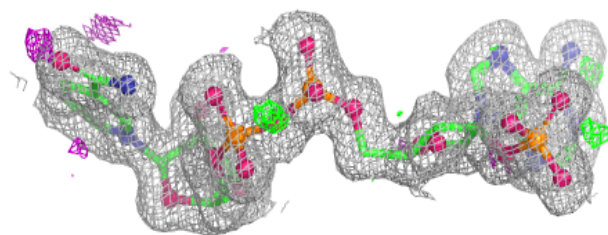
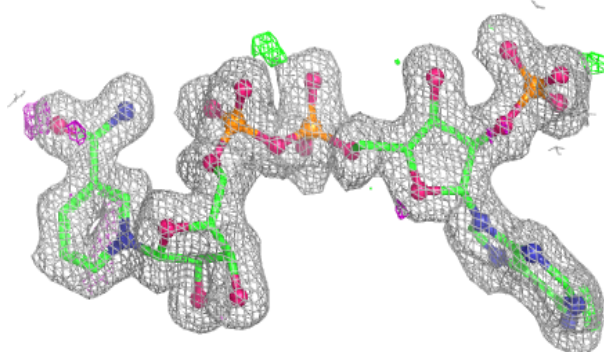


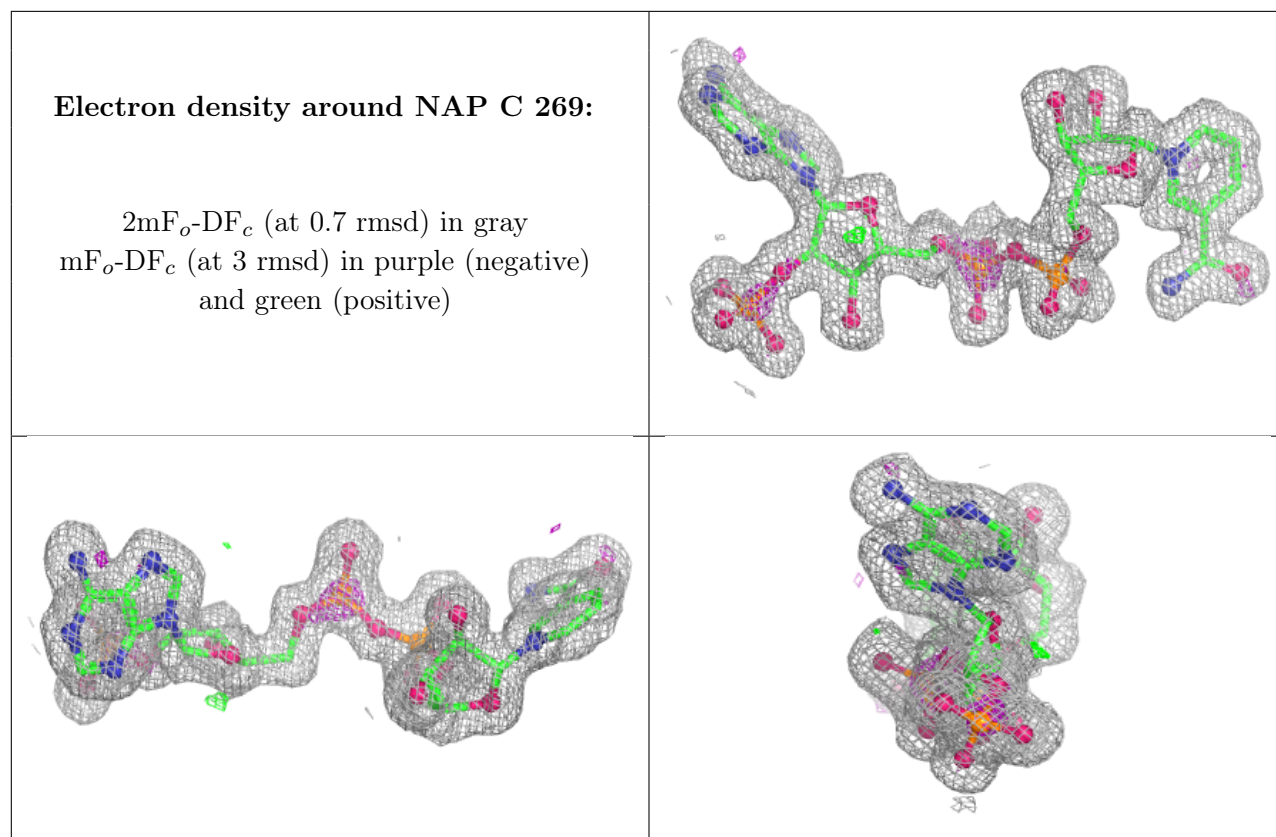
Electron density around NAP A 269:

$2mF_o-DF_c$ (at 0.7 rmsd) in gray
 mF_o-DF_c (at 3 rmsd) in purple (negative)
and green (positive)

**Electron density around NAP B 269:**

$2mF_o-DF_c$ (at 0.7 rmsd) in gray
 mF_o-DF_c (at 3 rmsd) in purple (negative)
and green (positive)





6.5 Other polymers [i](#)

There are no such residues in this entry.