



# wwPDB X-ray Structure Validation Summary Report ⓘ

Mar 19, 2025 – 04:35 AM EDT

PDB ID : 3MMH  
Title : X-ray structure of free methionine-R-sulfoxide reductase from neisseria meningitidis in complex with its substrate  
Authors : Gruez, A.; Libiad, M.; Boschi-Muller, S.; Branlant, G.  
Deposited on : 2010-04-19  
Resolution : 1.25 Å(reported)

This is a wwPDB X-ray Structure Validation Summary Report for a publicly released PDB entry.

We welcome your comments at [validation@mail.wwpdb.org](mailto:validation@mail.wwpdb.org)

A user guide is available at

<https://www.wwpdb.org/validation/2017/XrayValidationReportHelp>

with specific help available everywhere you see the ⓘ symbol.

The types of validation reports are described at

<http://www.wwpdb.org/validation/2017/FAQs#types>.

---

The following versions of software and data (see [references ⓘ](#)) were used in the production of this report:

MolProbity	:	4.02b-467
Mogul	:	2022.3.0, CSD as543be (2022)
Xtriage (Phenix)	:	1.21
EDS	:	3.0
Percentile statistics	:	20231227.v01 (using entries in the PDB archive December 27th 2023)
CCP4	:	9.0.004 (Gargrove)
Density-Fitness	:	1.0.11
Ideal geometry (proteins)	:	Engh & Huber (2001)
Ideal geometry (DNA, RNA)	:	Parkinson et al. (1996)
Validation Pipeline (wwPDB-VP)	:	2.41.4

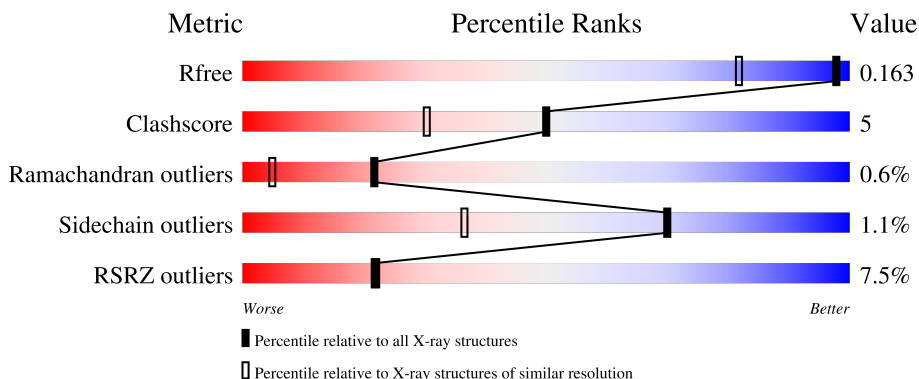
# 1 Overall quality at a glance

The following experimental techniques were used to determine the structure:

*X-RAY DIFFRACTION*

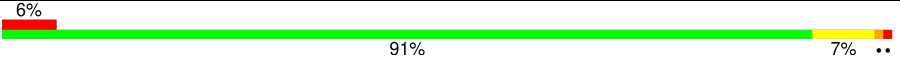

The reported resolution of this entry is 1.25 Å.

Percentile scores (ranging between 0-100) for global validation metrics of the entry are shown in the following graphic. The table shows the number of entries on which the scores are based.



Metric	Whole archive (#Entries)	Similar resolution (#Entries, resolution range(Å))
$R_{free}$	164625	1447 (1.28-1.24)
Clashscore	180529	1571 (1.28-1.24)
Ramachandran outliers	177936	1538 (1.28-1.24)
Sidechain outliers	177891	1537 (1.28-1.24)
RSRZ outliers	164620	1447 (1.28-1.24)

The table below summarises the geometric issues observed across the polymeric chains and their fit to the electron density. The red, orange, yellow and green segments of the lower bar indicate the fraction of residues that contain outliers for  $\geq 3$ , 2, 1 and 0 types of geometric quality criteria respectively. A grey segment represents the fraction of residues that are not modelled. The numeric value for each fraction is indicated below the corresponding segment, with a dot representing fractions  $\leq 5\%$ . The upper red bar (where present) indicates the fraction of residues that have poor fit to the electron density. The numeric value is given above the bar.

Mol	Chain	Length	Quality of chain
1	A	167	 6% 91% 7% ..
1	B	167	 9% 90% 8% ..

## 2 Entry composition [i](#)

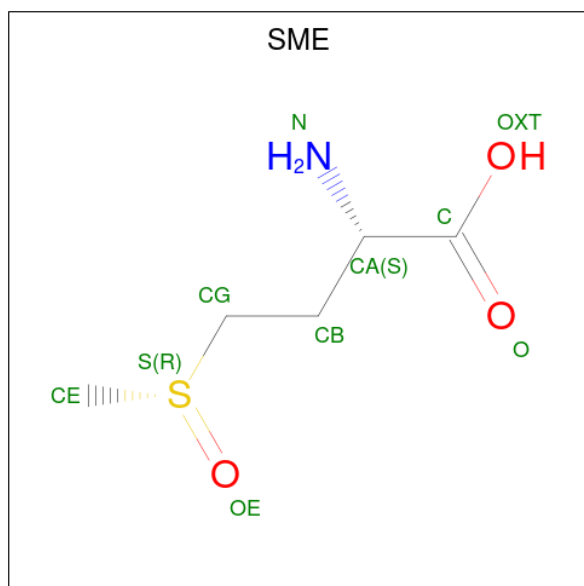
There are 6 unique types of molecules in this entry. The entry contains 3090 atoms, of which 0 are hydrogens and 0 are deuteriums.

In the tables below, the ZeroOcc column contains the number of atoms modelled with zero occupancy, the AltConf column contains the number of residues with at least one atom in alternate conformation and the Trace column contains the number of residues modelled with at most 2 atoms.

- Molecule 1 is a protein called Methionine-R-sulfoxide reductase.

Mol	Chain	Residues	Atoms					ZeroOcc	AltConf	Trace
1	A	167	Total	C	N	O	S	0	16	0
			1377	891	224	256	6			
1	B	167	Total	C	N	O	S	12	9	0
			1330	852	222	250	6			

- Molecule 2 is METHIONINE SULFOXIDE (three-letter code: SME) (formula:  $C_5H_{11}NO_3S$ ).

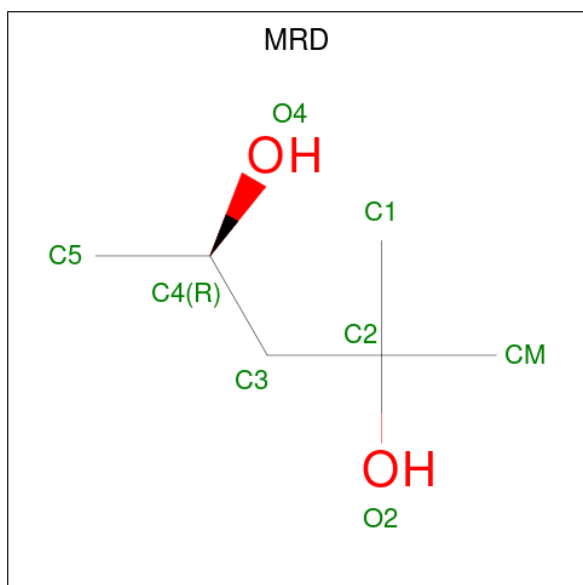


Mol	Chain	Residues	Atoms					ZeroOcc	AltConf
2	A	1	Total	C	N	O	S	0	0
			10	5	1	3	1		
2	B	1	Total	C	N	O	S	0	0
			10	5	1	3	1		

- Molecule 3 is MAGNESIUM ION (three-letter code: MG) (formula: Mg).

Mol	Chain	Residues	Atoms		ZeroOcc	AltConf
3	A	7	Total	Mg	0	0
			7	7		
3	B	2	Total	Mg	0	0
			2	2		

- Molecule 4 is (4R)-2-METHYLPENTANE-2,4-DIOL (three-letter code: MRD) (formula:  $C_6H_{14}O_2$ ).



Mol	Chain	Residues	Atoms			ZeroOcc	AltConf
4	A	1	Total	C	O	0	0
			8	6	2		
4	A	1	Total	C	O	0	0
			8	6	2		
4	B	1	Total	C	O	0	1
			16	12	4		
4	B	1	Total	C	O	0	0
			8	6	2		

- Molecule 5 is ACETATE ION (three-letter code: ACT) (formula:  $C_2H_3O_2$ ).



Mol	Chain	Residues	Atoms			ZeroOcc	AltConf
5	A	1	Total	C	O	0	0
			4	2	2		
5	A	1	Total	C	O	0	0
			4	2	2		

- Molecule 6 is water.

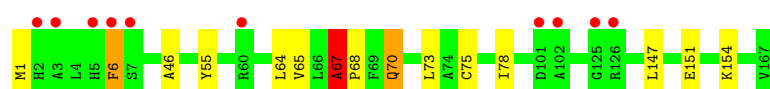
Mol	Chain	Residues	Atoms		ZeroOcc	AltConf
6	A	183	Total	O	0	0
			183	183		
6	B	123	Total	O	0	0
			123	123		

### 3 Residue-property plots [i](#)


These plots are drawn for all protein, RNA, DNA and oligosaccharide chains in the entry. The first graphic for a chain summarises the proportions of the various outlier classes displayed in the second graphic. The second graphic shows the sequence view annotated by issues in geometry and electron density. Residues are color-coded according to the number of geometric quality criteria for which they contain at least one outlier: green = 0, yellow = 1, orange = 2 and red = 3 or more. A red dot above a residue indicates a poor fit to the electron density ( $RSRZ > 2$ ). Stretches of 2 or more consecutive residues without any outlier are shown as a green connector. Residues present in the sample, but not in the model, are shown in grey.

- Molecule 1: Methionine-R-sulfoxide reductase

Chain A: 



- Molecule 1: Methionine-R-sulfoxide reductase

Chain B: 



## 4 Data and refinement statistics

Property	Value	Source
Space group	P 1	Depositor
Cell constants a, b, c, $\alpha$ , $\beta$ , $\gamma$	39.32Å 39.48Å 52.25Å 104.17° 105.16° 100.50°	Depositor
Resolution (Å)	20.00 – 1.25 20.00 – 1.25	Depositor EDS
% Data completeness (in resolution range)	100.0 (20.00-1.25) 90.2 (20.00-1.25)	Depositor EDS
$R_{merge}$	0.04	Depositor
$R_{sym}$	(Not available)	Depositor
$\langle I/\sigma(I) \rangle$ <sup>1</sup>	1.84 (at 1.20Å)	Xtriage
Refinement program	REFMAC	Depositor
R, $R_{free}$	0.118 , 0.157 0.129 , 0.163	Depositor DCC
$R_{free}$ test set	3546 reflections (5.00%)	wwPDB-VP
Wilson B-factor (Å <sup>2</sup> )	13.2	Xtriage
Anisotropy	0.091	Xtriage
Bulk solvent $k_{sol}$ (e/Å <sup>3</sup> ), $B_{sol}$ (Å <sup>2</sup> )	0.37 , 50.1	EDS
L-test for twinning <sup>2</sup>	$\langle  L  \rangle = 0.49$ , $\langle L^2 \rangle = 0.32$	Xtriage
Estimated twinning fraction	0.018 for -k,-h,-l	Xtriage
$F_o, F_c$ correlation	0.98	EDS
Total number of atoms	3090	wwPDB-VP
Average B, all atoms (Å <sup>2</sup> )	18.0	wwPDB-VP

Xtriage's analysis on translational NCS is as follows: *The largest off-origin peak in the Patterson function is 11.10% of the height of the origin peak. No significant pseudotranslation is detected.*

<sup>1</sup>Intensities estimated from amplitudes.

<sup>2</sup>Theoretical values of  $\langle |L| \rangle$ ,  $\langle L^2 \rangle$  for acentric reflections are 0.5, 0.333 respectively for untwinned datasets, and 0.375, 0.2 for perfectly twinned datasets.

## 5 Model quality [i](#)

### 5.1 Standard geometry [i](#)

Bond lengths and bond angles in the following residue types are not validated in this section: MG, ACT, MRD, SME

The Z score for a bond length (or angle) is the number of standard deviations the observed value is removed from the expected value. A bond length (or angle) with  $|Z| > 5$  is considered an outlier worth inspection. RMSZ is the root-mean-square of all Z scores of the bond lengths (or angles).

Mol	Chain	Bond lengths		Bond angles	
		RMSZ	$\# Z  > 5$	RMSZ	$\# Z  > 5$
1	A	1.00	0/1459	1.00	1/1984 (0.1%)
1	B	1.05	0/1379	1.00	6/1875 (0.3%)
All	All	1.03	0/2838	1.00	7/3859 (0.2%)

There are no bond length outliers.

The worst 5 of 7 bond angle outliers are listed below:

Mol	Chain	Res	Type	Atoms	Z	Observed(°)	Ideal(°)
1	A	67	ALA	CB-CA-C	5.75	118.72	110.10
1	B	126	ARG	NE-CZ-NH1	5.72	123.16	120.30
1	B	10	ASP	CB-CG-OD2	-5.70	113.17	118.30
1	B	5	HIS	CB-CA-C	-5.43	99.53	110.40
1	B	67	ALA	CB-CA-C	5.23	117.94	110.10

There are no chirality outliers.

There are no planarity outliers.

### 5.2 Too-close contacts [i](#)

In the following table, the Non-H and H(model) columns list the number of non-hydrogen atoms and hydrogen atoms in the chain respectively. The H(added) column lists the number of hydrogen atoms added and optimized by MolProbity. The Clashes column lists the number of clashes within the asymmetric unit, whereas Symm-Clashes lists symmetry-related clashes.

Mol	Chain	Non-H	H(model)	H(added)	Clashes	Symm-Clashes
1	A	1377	0	1394	12	0
1	B	1330	0	1307	15	0
2	A	10	0	10	0	0
2	B	10	0	10	0	0

*Continued on next page...*



*Continued from previous page...*

Mol	Chain	Non-H	H(model)	H(added)	Clashes	Symm-Clashes
3	A	7	0	0	0	0
3	B	2	0	0	0	0
4	A	16	0	28	4	0
4	B	24	0	42	2	0
5	A	8	0	6	0	1
6	A	183	0	0	2	1
6	B	123	0	0	0	0
All	All	3090	0	2797	29	1

The all-atom clashscore is defined as the number of clashes found per 1000 atoms (including hydrogen atoms). The all-atom clashscore for this structure is 5.

The worst 5 of 29 close contacts within the same asymmetric unit are listed below, sorted by their clash magnitude.

Atom-1	Atom-2	Interatomic distance (Å)	Clash overlap (Å)
4:B:171[A]:MRD:H1C2	4:B:171[A]:MRD:O4	1.67	0.93
4:A:176:MRD:H1C2	4:A:176:MRD:H5C3	1.77	0.67
4:B:171[A]:MRD:O4	4:B:171[A]:MRD:C1	2.41	0.67
1:A:65[B]:VAL:HG13	6:A:308:HOH:O	1.99	0.63
4:A:177:MRD:H1C2	6:A:298:HOH:O	2.01	0.60

All (1) symmetry-related close contacts are listed below. The label for Atom-2 includes the symmetry operator and encoded unit-cell translations to be applied.

Atom-1	Atom-2	Interatomic distance (Å)	Clash overlap (Å)
5:A:179:ACT:OXT	6:A:343:HOH:O[1_545]	2.15	0.05

## 5.3 Torsion angles [i](#)

### 5.3.1 Protein backbone [i](#)

In the following table, the Percentiles column shows the percent Ramachandran outliers of the chain as a percentile score with respect to all X-ray entries followed by that with respect to entries of similar resolution.

The Analysed column shows the number of residues for which the backbone conformation was analysed, and the total number of residues.

Mol	Chain	Analysed	Favoured	Allowed	Outliers	Percentiles	
1	A	184/167 (110%)	182 (99%)	1 (0%)	1 (0%)	25	6
1	B	174/167 (104%)	171 (98%)	2 (1%)	1 (1%)	22	5
All	All	358/334 (107%)	353 (99%)	3 (1%)	2 (1%)	22	5

All (2) Ramachandran outliers are listed below:

Mol	Chain	Res	Type
1	A	67	ALA
1	B	67	ALA

### 5.3.2 Protein sidechains ⓘ

In the following table, the Percentiles column shows the percent sidechain outliers of the chain as a percentile score with respect to all X-ray entries followed by that with respect to entries of similar resolution.

The Analysed column shows the number of residues for which the sidechain conformation was analysed, and the total number of residues.

Mol	Chain	Analysed	Rotameric	Outliers	Percentiles	
1	A	152/133 (114%)	150 (99%)	2 (1%)	65	30
1	B	141/133 (106%)	140 (99%)	1 (1%)	81	57
All	All	293/266 (110%)	290 (99%)	3 (1%)	70	40

All (3) residues with a non-rotameric sidechain are listed below:

Mol	Chain	Res	Type
1	A	6	PHE
1	A	70	GLN
1	B	4	LEU

Sometimes sidechains can be flipped to improve hydrogen bonding and reduce clashes. All (1) such sidechains are listed below:

Mol	Chain	Res	Type
1	A	70	GLN

### 5.3.3 RNA ⓘ

There are no RNA molecules in this entry.

## 5.4 Non-standard residues in protein, DNA, RNA chains [i](#)

There are no non-standard protein/DNA/RNA residues in this entry.

## 5.5 Carbohydrates [i](#)

There are no oligosaccharides in this entry.

## 5.6 Ligand geometry [i](#)

Of 18 ligands modelled in this entry, 9 are monoatomic - leaving 9 for Mogul analysis.

In the following table, the Counts columns list the number of bonds (or angles) for which Mogul statistics could be retrieved, the number of bonds (or angles) that are observed in the model and the number of bonds (or angles) that are defined in the Chemical Component Dictionary. The Link column lists molecule types, if any, to which the group is linked. The Z score for a bond length (or angle) is the number of standard deviations the observed value is removed from the expected value. A bond length (or angle) with  $|Z| > 2$  is considered an outlier worth inspection. RMSZ is the root-mean-square of all Z scores of the bond lengths (or angles).

Mol	Type	Chain	Res	Link	Bond lengths			Bond angles		
					Counts	RMSZ	# $ Z  > 2$	Counts	RMSZ	# $ Z  > 2$
4	MRD	B	171[A]	-	7,7,7	0.55	0	9,10,10	1.36	1 (11%)
4	MRD	B	171[B]	-	7,7,7	0.45	0	9,10,10	1.07	1 (11%)
5	ACT	A	179	-	3,3,3	1.25	0	3,3,3	1.93	2 (66%)
2	SME	B	168	-	7,9,9	1.03	0	6,11,11	2.18	1 (16%)
4	MRD	A	176	-	7,7,7	1.02	1 (14%)	9,10,10	1.50	2 (22%)
2	SME	A	168	-	7,9,9	0.95	0	6,11,11	2.77	2 (33%)
4	MRD	B	172	-	7,7,7	1.01	1 (14%)	9,10,10	1.23	1 (11%)
5	ACT	A	178	-	3,3,3	0.88	0	3,3,3	1.36	0
4	MRD	A	177	-	7,7,7	0.62	0	9,10,10	1.21	1 (11%)

In the following table, the Chirals column lists the number of chiral outliers, the number of chiral centers analysed, the number of these observed in the model and the number defined in the Chemical Component Dictionary. Similar counts are reported in the Torsion and Rings columns. '-' means no outliers of that kind were identified.

Mol	Type	Chain	Res	Link	Chirals	Torsions	Rings
4	MRD	B	171[A]	-	-	2/5/5/5	-
4	MRD	B	171[B]	-	-	2/5/5/5	-
2	SME	B	168	-	-	2/9/9/9	-

*Continued on next page...*

*Continued from previous page...*

Mol	Type	Chain	Res	Link	Chirals	Torsions	Rings
4	MRD	A	176	-	-	2/5/5/5	-
2	SME	A	168	-	-	1/9/9/9	-
4	MRD	B	172	-	-	0/5/5/5	-
4	MRD	A	177	-	-	4/5/5/5	-

All (2) bond length outliers are listed below:

Mol	Chain	Res	Type	Atoms	Z	Observed(Å)	Ideal(Å)
4	A	176	MRD	O2-C2	2.19	1.50	1.44
4	B	172	MRD	O2-C2	-2.08	1.39	1.44

The worst 5 of 11 bond angle outliers are listed below:

Mol	Chain	Res	Type	Atoms	Z	Observed(°)	Ideal(°)
2	A	168	SME	OE-S-CG	5.62	120.63	105.89
2	B	168	SME	OE-S-CG	4.59	117.94	105.89
2	A	168	SME	OE-S-CE	3.40	119.69	106.69
4	B	171[A]	MRD	CM-C2-C1	3.20	117.79	110.63
4	B	172	MRD	O2-C2-C1	-2.80	99.26	107.99

There are no chirality outliers.

5 of 13 torsion outliers are listed below:

Mol	Chain	Res	Type	Atoms
4	A	176	MRD	C2-C3-C4-O4
4	A	176	MRD	C2-C3-C4-C5
4	A	177	MRD	C2-C3-C4-C5
4	B	171[A]	MRD	C2-C3-C4-O4
2	A	168	SME	CA-CB-CG-S

There are no ring outliers.

4 monomers are involved in 7 short contacts:

Mol	Chain	Res	Type	Clashes	Symm-Clashes
4	B	171[A]	MRD	2	0
5	A	179	ACT	0	1
4	A	176	MRD	1	0
4	A	177	MRD	3	0

## 5.7 Other polymers [i](#)

There are no such residues in this entry.

## 5.8 Polymer linkage issues [i](#)

There are no chain breaks in this entry.

## 6 Fit of model and data [i](#)

### 6.1 Protein, DNA and RNA chains [i](#)

In the following table, the column labelled ‘#RSRZ> 2’ contains the number (and percentage) of RSRZ outliers, followed by percent RSRZ outliers for the chain as percentile scores relative to all X-ray entries and entries of similar resolution. The OWAB column contains the minimum, median, 95<sup>th</sup> percentile and maximum values of the occupancy-weighted average B-factor per residue. The column labelled ‘Q< 0.9’ lists the number of (and percentage) of residues with an average occupancy less than 0.9.

Mol	Chain	Analysed	<RSRZ>	#RSRZ>2		OWAB(Å <sup>2</sup> )	Q<0.9
1	A	167/167 (100%)	-0.05	10 (5%)	29 28	6, 13, 22, 28	26 (15%)
1	B	166/167 (99%)	0.27	15 (9%)	17 16	3, 16, 27, 39	25 (15%)
All	All	333/334 (99%)	0.11	25 (7%)	22 22	3, 14, 25, 39	51 (15%)

The worst 5 of 25 RSRZ outliers are listed below:

Mol	Chain	Res	Type	RSRZ
1	B	6	PHE	24.1
1	A	125	GLY	5.5
1	A	6	PHE	5.3
1	B	167	VAL	4.9
1	B	5	HIS	4.6

### 6.2 Non-standard residues in protein, DNA, RNA chains [i](#)

There are no non-standard protein/DNA/RNA residues in this entry.

### 6.3 Carbohydrates [i](#)

There are no monosaccharides in this entry.

### 6.4 Ligands [i](#)

In the following table, the Atoms column lists the number of modelled atoms in the group and the number defined in the chemical component dictionary. The B-factors column lists the minimum, median, 95<sup>th</sup> percentile and maximum values of B factors of atoms in the group. The column labelled ‘Q< 0.9’ lists the number of atoms with occupancy less than 0.9.

Mol	Type	Chain	Res	Atoms	RSCC	RSR	B-factors( $\text{\AA}^2$ )	Q<0.9
4	MRD	B	172	8/8	0.76	0.22	25,29,32,34	8
5	ACT	A	179	4/4	0.80	0.13	16,24,25,25	4
4	MRD	B	171[B]	8/8	0.82	0.13	27,30,33,36	8
4	MRD	A	177	8/8	0.82	0.11	26,35,40,40	0
4	MRD	B	171[A]	8/8	0.82	0.13	25,29,35,38	8
3	MG	A	175	1/1	0.87	0.10	45,45,45,45	0
4	MRD	A	176	8/8	0.92	0.09	20,26,33,34	0
5	ACT	A	178	4/4	0.97	0.08	18,19,19,20	0
2	SME	B	168	10/10	0.97	0.06	15,17,22,30	0
2	SME	A	168	10/10	0.98	0.05	13,14,20,26	0
3	MG	A	169	1/1	0.98	0.07	18,18,18,18	0
3	MG	B	170	1/1	0.99	0.06	19,19,19,19	0
3	MG	A	172	1/1	0.99	0.12	17,17,17,17	0
3	MG	A	170	1/1	0.99	0.16	18,18,18,18	0
3	MG	B	169	1/1	0.99	0.07	17,17,17,17	0
3	MG	A	173	1/1	1.00	0.05	20,20,20,20	0
3	MG	A	174	1/1	1.00	0.06	18,18,18,18	0
3	MG	A	171	1/1	1.00	0.09	18,18,18,18	0

## 6.5 Other polymers [i](#)

There are no such residues in this entry.