



Full wwPDB X-ray Structure Validation Report ⓘ

Apr 19, 2025 – 10:06 AM EDT

PDB ID : 9MOZ / pdb_00009moz
Title : Crystal structure of mithramycin analogue MTM SA-5-methyl-Trp in complex with DNA AGAGGCCTCT
Authors : Hou, C.; Tsodikov, O.V.
Deposited on : 2024-12-28
Resolution : 2.23 Å(reported)

This is a Full wwPDB X-ray Structure Validation Report for a publicly released PDB entry.

We welcome your comments at validation@mail.wwpdb.org

A user guide is available at

<https://www.wwpdb.org/validation/2017/XrayValidationReportHelp>

with specific help available everywhere you see the ⓘ symbol.

The types of validation reports are described at

<http://www.wwpdb.org/validation/2017/FAQs#types>.

The following versions of software and data (see [references ⓘ](#)) were used in the production of this report:

MolProbity	:	4.02b-467
Mogul	:	2022.3.0, CSD as543be (2022)
Xtriage (Phenix)	:	2.0rc1
EDS	:	3.0
buster-report	:	1.1.7 (2018)
Percentile statistics	:	20231227.v01 (using entries in the PDB archive December 27th 2023)
CCP4	:	9.0.006 (Gargrove)
Density-Fitness	:	1.0.12
Ideal geometry (proteins)	:	Engh & Huber (2001)
Ideal geometry (DNA, RNA)	:	Parkinson et al. (1996)
Validation Pipeline (wwPDB-VP)	:	2.42

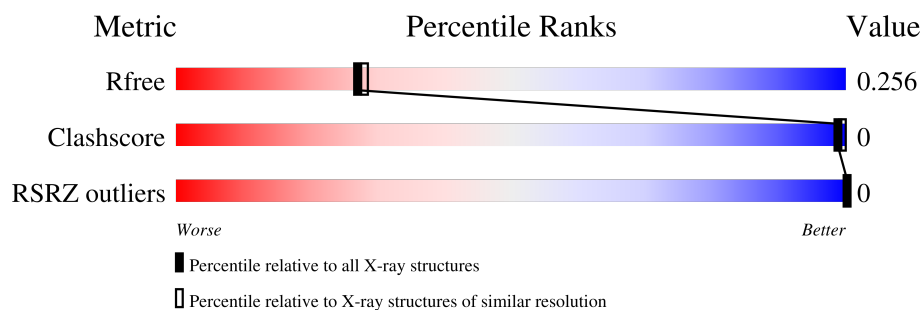
1 Overall quality at a glance

The following experimental techniques were used to determine the structure:

X-RAY DIFFRACTION

The reported resolution of this entry is 2.23 Å.

Percentile scores (ranging between 0-100) for global validation metrics of the entry are shown in the following graphic. The table shows the number of entries on which the scores are based.



Metric	Whole archive (#Entries)	Similar resolution (#Entries, resolution range(Å))
R_{free}	164625	3139 (2.26-2.22)
Clashscore	180529	3381 (2.26-2.22)
RSRZ outliers	164620	3138 (2.26-2.22)

The table below summarises the geometric issues observed across the polymeric chains and their fit to the electron density. The red, orange, yellow and green segments of the lower bar indicate the fraction of residues that contain outliers for ≥ 3 , 2, 1 and 0 types of geometric quality criteria respectively. A grey segment represents the fraction of residues that are not modelled. The numeric value for each fraction is indicated below the corresponding segment, with a dot representing fractions $\leq 5\%$. The upper red bar (where present) indicates the fraction of residues that have poor fit to the electron density. The numeric value is given above the bar.

Mol	Chain	Length	Quality of chain
1	A	10	
1	B	10	
1	D	10	
1	E	10	
1	G	10	
1	H	10	

2 Entry composition [i](#)

There are 6 unique types of molecules in this entry. The entry contains 1864 atoms, of which 0 are hydrogens and 0 are deuteriums.

In the tables below, the ZeroOcc column contains the number of atoms modelled with zero occupancy, the AltConf column contains the number of residues with at least one atom in alternate conformation and the Trace column contains the number of residues modelled with at most 2 atoms.

- Molecule 1 is a DNA chain called DNA (5'-D(*AP*GP*AP*GP*GP*CP*CP*TP*CP*T)-3').

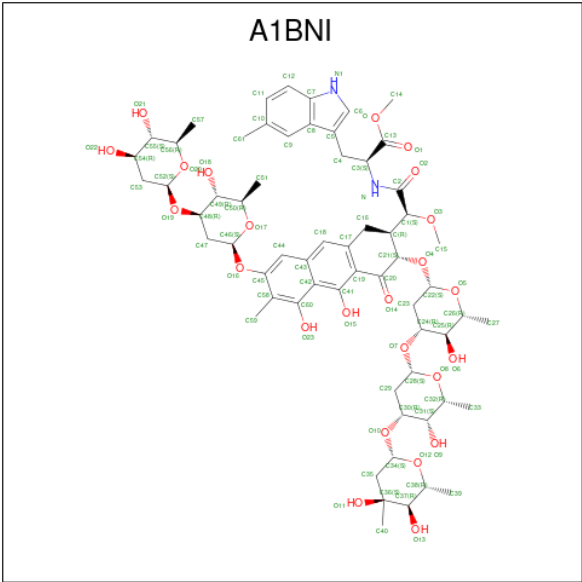
Mol	Chain	Residues	Atoms					ZeroOcc	AltConf	Trace
1	A	10	Total	C	N	O	P	0	0	0
			202	97	38	58	9			
1	B	10	Total	C	N	O	P	0	0	0
			202	97	38	58	9			
1	D	10	Total	C	N	O	P	0	0	0
			202	97	38	58	9			
1	E	10	Total	C	N	O	P	0	0	0
			202	97	38	58	9			
1	G	10	Total	C	N	O	P	0	0	0
			202	97	38	58	9			
1	H	10	Total	C	N	O	P	0	0	0
			202	97	38	58	9			

- Molecule 2 is ZINC ION (CCD ID: ZN) (formula: Zn).

Mol	Chain	Residues	Atoms		ZeroOcc	AltConf
2	A	3	Total	Zn	0	0
			3	3		
2	B	6	Total	Zn	0	0
			6	6		
2	D	3	Total	Zn	0	0
			3	3		
2	E	6	Total	Zn	0	0
			6	6		
2	G	4	Total	Zn	0	0
			4	4		
2	H	5	Total	Zn	0	0
			5	5		

- Molecule 3 is methyl (2S)-2-({(2S)-2-[(2R,3S)-3-{[(2S,4R,5R,6R)-4-{[(2S,4R,5S,6R)-4-{[(2S,4S,5R,6R)-4,5-dihydroxy-4,6-dimethyloxan-2-yl]oxy}-5-hydroxy-6-methyloxan-2-yl]oxy}-5-hydroxy-6-methyloxan-2-yl]oxy}-7-{[(2S,4R,5R,6R)-4-{[(2S,4R,5S,6R)-4,5-dihydroxy-6-meth

yloxan-2-yl]oxy}-5-hydroxy-6-methyloxan-2-yl]oxy}-5,10-dihydroxy-6-methyl-4-oxo-1,2,3,4-tetrahydroanthracen-2-yl]-2-methoxyacetyl}amino)-3-(5-methyl-1H-indol-3-yl)propanoate (non-preferred name) (CCD ID: A1BNI) (formula: C₆₂H₈₄N₂O₂₄) (labeled as "Ligand of Interest" by depositor).



Mol	Chain	Residues	Atoms				ZeroOcc	AltConf
3	A	1	Total	C	N	O	0	0
			88	62	2	24		
3	A	1	Total	C	N	O	0	0
			88	62	2	24		
3	D	1	Total	C	N	O	0	0
			88	62	2	24		
3	D	1	Total	C	N	O	0	0
			88	62	2	24		
3	G	1	Total	C	N	O	0	0
			88	62	2	24		
3	G	1	Total	C	N	O	0	0
			88	62	2	24		

- Molecule 4 is CHLORIDE ION (CCD ID: CL) (formula: Cl).

Mol	Chain	Residues	Atoms		ZeroOcc	AltConf
4	B	2	Total	Cl	0	0
			2	2		
4	E	1	Total	Cl	0	0
			1	1		

- Molecule 5 is SODIUM ION (CCD ID: NA) (formula: Na).

Mol	Chain	Residues	Atoms	ZeroOcc	AltConf
5	D	1	Total Na 1 1	0	0
5	E	1	Total Na 1 1	0	0
5	G	1	Total Na 1 1	0	0
5	H	1	Total Na 1 1	0	0

- Molecule 6 is water.

Mol	Chain	Residues	Atoms	ZeroOcc	AltConf
6	A	15	Total O 15 15	0	0
6	B	13	Total O 13 13	0	0
6	D	25	Total O 25 25	0	0
6	E	15	Total O 15 15	0	0
6	G	10	Total O 10 10	0	0
6	H	12	Total O 12 12	0	0

3 Residue-property plots

These plots are drawn for all protein, RNA, DNA and oligosaccharide chains in the entry. The first graphic for a chain summarises the proportions of the various outlier classes displayed in the second graphic. The second graphic shows the sequence view annotated by issues in geometry and electron density. Residues are color-coded according to the number of geometric quality criteria for which they contain at least one outlier: green = 0, yellow = 1, orange = 2 and red = 3 or more. A red dot above a residue indicates a poor fit to the electron density ($RSRZ > 2$). Stretches of 2 or more consecutive residues without any outlier are shown as a green connector. Residues present in the sample, but not in the model, are shown in grey.

- Molecule 1: DNA (5'-D(*AP*GP*AP*GP*GP*CP*CP*TP*CP*T)-3')

Chain A:  100%

There are no outlier residues recorded for this chain.

- Molecule 1: DNA (5'-D(*AP*GP*AP*GP*GP*CP*CP*TP*CP*T)-3')

Chain B:  100%

There are no outlier residues recorded for this chain.

- Molecule 1: DNA (5'-D(*AP*GP*AP*GP*GP*CP*CP*TP*CP*T)-3')

Chain D:  100%

There are no outlier residues recorded for this chain.

- Molecule 1: DNA (5'-D(*AP*GP*AP*GP*GP*CP*CP*TP*CP*T)-3')

Chain E:  100%

There are no outlier residues recorded for this chain.

- Molecule 1: DNA (5'-D(*AP*GP*AP*GP*GP*CP*CP*TP*CP*T)-3')

Chain G:  100%

There are no outlier residues recorded for this chain.

- Molecule 1: DNA (5'-D(*AP*GP*AP*GP*GP*CP*CP*TP*CP*T)-3')

Chain H:  100%

There are no outlier residues recorded for this chain.

4 Data and refinement statistics

Property	Value	Source
Space group	P 31 2 1	Depositor
Cell constants a, b, c, α , β , γ	93.47Å 93.47Å 65.41Å 90.00° 90.00° 120.00°	Depositor
Resolution (Å)	40.47 – 2.23 40.47 – 2.23	Depositor EDS
% Data completeness (in resolution range)	99.8 (40.47-2.23) 99.8 (40.47-2.23)	Depositor EDS
R_{merge}	(Not available)	Depositor
R_{sym}	(Not available)	Depositor
$\langle I/\sigma(I) \rangle$ ¹	2.04 (at 2.22Å)	Xtriage
Refinement program	REFMAC 5.8.0267	Depositor
R, R_{free}	0.228 , 0.249 0.232 , 0.256	Depositor DCC
R_{free} test set	840 reflections (5.13%)	wwPDB-VP
Wilson B-factor (Å ²)	50.8	Xtriage
Anisotropy	0.395	Xtriage
Bulk solvent k_{sol} (e/Å ³), B_{sol} (Å ²)	0.31 , 73.8	EDS
L-test for twinning ²	$\langle L \rangle = 0.45$, $\langle L^2 \rangle = 0.27$	Xtriage
Estimated twinning fraction	0.477 for -h,-k,l	Xtriage
F_o, F_c correlation	0.95	EDS
Total number of atoms	1864	wwPDB-VP
Average B, all atoms (Å ²)	56.0	wwPDB-VP

Xtriage's analysis on translational NCS is as follows: *The analyses of the Patterson function reveals a significant off-origin peak that is 21.57 % of the origin peak, indicating pseudo-translational symmetry. The chance of finding a peak of this or larger height randomly in a structure without pseudo-translational symmetry is equal to 6.8279e-03. The detected translational NCS is most likely also responsible for the elevated intensity ratio.*

¹ Intensities estimated from amplitudes.

² Theoretical values of $\langle |L| \rangle$, $\langle L^2 \rangle$ for acentric reflections are 0.5, 0.333 respectively for untwinned datasets, and 0.375, 0.2 for perfectly twinned datasets.

5 Model quality [i](#)

5.1 Standard geometry [i](#)

Bond lengths and bond angles in the following residue types are not validated in this section: CL, NA, A1BNI, ZN

The Z score for a bond length (or angle) is the number of standard deviations the observed value is removed from the expected value. A bond length (or angle) with $|Z| > 5$ is considered an outlier worth inspection. RMSZ is the root-mean-square of all Z scores of the bond lengths (or angles).

Mol	Chain	Bond lengths		Bond angles	
		RMSZ	# Z >5	RMSZ	# Z >5
1	A	0.31	0/226	0.72	0/347
1	B	0.31	0/226	0.72	0/347
1	D	0.29	0/226	0.76	0/347
1	E	0.29	0/226	0.71	0/347
1	G	0.30	0/226	0.68	0/347
1	H	0.28	0/226	0.66	0/347
All	All	0.30	0/1356	0.71	0/2082

There are no bond length outliers.

There are no bond angle outliers.

There are no chirality outliers.

There are no planarity outliers.

5.2 Too-close contacts [i](#)

In the following table, the Non-H and H(model) columns list the number of non-hydrogen atoms and hydrogen atoms in the chain respectively. The H(added) column lists the number of hydrogen atoms added and optimized by MolProbity. The Clashes column lists the number of clashes within the asymmetric unit, whereas Symm-Clashes lists symmetry-related clashes.

Mol	Chain	Non-H	H(model)	H(added)	Clashes	Symm-Clashes
1	A	202	0	114	0	0
1	B	202	0	114	0	0
1	D	202	0	114	0	0
1	E	202	0	114	0	0
1	G	202	0	114	0	0
1	H	202	0	114	0	0
2	A	3	0	0	0	0

Continued on next page...

Continued from previous page...

Mol	Chain	Non-H	H(model)	H(added)	Clashes	Symm-Clashes
2	B	6	0	0	0	0
2	D	3	0	0	0	0
2	E	6	0	0	0	0
2	G	4	0	0	0	0
2	H	5	0	0	0	0
3	A	176	0	0	0	0
3	D	176	0	0	0	0
3	G	176	0	0	0	0
4	B	2	0	0	1	0
4	E	1	0	0	0	0
5	D	1	0	0	0	0
5	E	1	0	0	0	0
5	G	1	0	0	0	0
5	H	1	0	0	0	0
6	A	15	0	0	0	0
6	B	13	0	0	0	0
6	D	25	0	0	0	0
6	E	15	0	0	0	0
6	G	10	0	0	0	0
6	H	12	0	0	0	0
All	All	1864	0	684	1	0

The all-atom clashscore is defined as the number of clashes found per 1000 atoms (including hydrogen atoms). The all-atom clashscore for this structure is 0.

All (1) close contacts within the same asymmetric unit are listed below, sorted by their clash magnitude.

Atom-1	Atom-2	Interatomic distance (Å)	Clash overlap (Å)
4:B:107:CL:CL	4:B:108:CL:CL	0.77	0.77

There are no symmetry-related clashes.

5.3 Torsion angles [i](#)

5.3.1 Protein backbone [i](#)

There are no protein molecules in this entry.

5.3.2 Protein sidechains [i](#)

There are no protein molecules in this entry.

5.3.3 RNA [i](#)

There are no RNA molecules in this entry.

5.4 Non-standard residues in protein, DNA, RNA chains [i](#)

There are no non-standard protein/DNA/RNA residues in this entry.

5.5 Carbohydrates [i](#)

There are no oligosaccharides in this entry.

5.6 Ligand geometry [i](#)

Of 40 ligands modelled in this entry, 34 are monoatomic - leaving 6 for Mogul analysis.

In the following table, the Counts columns list the number of bonds (or angles) for which Mogul statistics could be retrieved, the number of bonds (or angles) that are observed in the model and the number of bonds (or angles) that are defined in the Chemical Component Dictionary. The Link column lists molecule types, if any, to which the group is linked. The Z score for a bond length (or angle) is the number of standard deviations the observed value is removed from the expected value. A bond length (or angle) with $|Z| > 2$ is considered an outlier worth inspection. RMSZ is the root-mean-square of all Z scores of the bond lengths (or angles).

Mol	Type	Chain	Res	Link	Bond lengths			Bond angles		
					Counts	RMSZ	$\# Z > 2$	Counts	RMSZ	$\# Z > 2$
3	A1BNI	G	103	2	96,97,97	0.92	3 (3%)	134,147,147	1.15	12 (8%)
3	A1BNI	D	104	2	96,97,97	0.87	2 (2%)	134,147,147	1.02	10 (7%)
3	A1BNI	G	105	2	96,97,97	0.87	1 (1%)	134,147,147	1.08	10 (7%)
3	A1BNI	A	104	2	96,97,97	0.91	3 (3%)	134,147,147	1.17	11 (8%)
3	A1BNI	A	103	2	96,97,97	0.92	3 (3%)	134,147,147	1.33	19 (14%)
3	A1BNI	D	103	2	96,97,97	0.88	3 (3%)	134,147,147	1.17	13 (9%)

In the following table, the Chirals column lists the number of chiral outliers, the number of chiral centers analysed, the number of these observed in the model and the number defined in the Chemical Component Dictionary. Similar counts are reported in the Torsion and Rings columns. '-' means no outliers of that kind were identified.

Mol	Type	Chain	Res	Link	Chirals	Torsions	Rings
3	A1BNI	G	103	2	-	5/43/143/143	0/10/10/10
3	A1BNI	D	104	2	-	8/43/143/143	0/10/10/10
3	A1BNI	G	105	2	-	10/43/143/143	0/10/10/10
3	A1BNI	A	104	2	-	6/43/143/143	0/10/10/10
3	A1BNI	A	103	2	-	10/43/143/143	0/10/10/10
3	A1BNI	D	103	2	-	12/43/143/143	0/10/10/10

All (15) bond length outliers are listed below:

Mol	Chain	Res	Type	Atoms	Z	Observed(Å)	Ideal(Å)
3	A	103	A1BNI	O-C13	5.41	1.46	1.33
3	G	103	A1BNI	O-C13	5.28	1.46	1.33
3	D	104	A1BNI	O-C13	5.22	1.46	1.33
3	G	105	A1BNI	O-C13	5.13	1.45	1.33
3	A	104	A1BNI	O-C13	5.12	1.45	1.33
3	D	103	A1BNI	O-C13	5.11	1.45	1.33
3	A	103	A1BNI	C19-C20	2.29	1.51	1.46
3	G	103	A1BNI	C19-C20	2.27	1.51	1.46
3	A	104	A1BNI	C44-C45	2.27	1.40	1.36
3	D	104	A1BNI	C44-C45	2.16	1.40	1.36
3	A	103	A1BNI	C44-C45	2.12	1.40	1.36
3	G	103	A1BNI	C44-C45	2.11	1.40	1.36
3	D	103	A1BNI	C19-C20	2.10	1.51	1.46
3	A	104	A1BNI	C19-C20	2.04	1.51	1.46
3	D	103	A1BNI	C44-C45	2.02	1.40	1.36

All (75) bond angle outliers are listed below:

Mol	Chain	Res	Type	Atoms	Z	Observed(°)	Ideal(°)
3	G	103	A1BNI	O3-C1-C	5.60	116.75	106.99
3	A	103	A1BNI	C3-N-C2	4.33	130.96	121.65
3	A	103	A1BNI	C4-C5-C6	-4.32	122.63	127.97
3	D	103	A1BNI	C4-C3-N	-3.89	102.78	110.83
3	A	104	A1BNI	C45-O16-C46	3.82	125.05	118.13
3	A	104	A1BNI	O-C13-C3	3.64	120.74	111.49
3	G	105	A1BNI	O-C13-C3	3.58	120.61	111.49
3	A	104	A1BNI	C19-C20-C21	3.55	122.92	116.04
3	G	103	A1BNI	O-C13-C3	3.51	120.42	111.49
3	A	103	A1BNI	O-C13-C3	3.29	119.86	111.49
3	D	103	A1BNI	O-C13-C3	3.29	119.86	111.49
3	G	105	A1BNI	O-C13-O1	-3.28	117.47	123.85
3	A	103	A1BNI	C4-C5-C8	3.27	131.34	126.25

Continued on next page...

Continued from previous page...

Mol	Chain	Res	Type	Atoms	Z	Observed(°)	Ideal(°)
3	D	104	A1BNI	C45-O16-C46	3.18	123.89	118.13
3	D	103	A1BNI	O3-C1-C	3.12	112.44	106.99
3	A	103	A1BNI	O3-C1-C	3.06	112.33	106.99
3	D	104	A1BNI	O-C13-C3	2.99	119.09	111.49
3	A	103	A1BNI	C45-O16-C46	2.97	123.52	118.13
3	A	104	A1BNI	C45-C58-C60	2.95	120.38	116.99
3	D	103	A1BNI	C19-C20-C21	2.94	121.74	116.04
3	A	104	A1BNI	C44-C45-C58	-2.89	119.02	122.45
3	A	103	A1BNI	O3-C1-C2	-2.87	106.05	111.64
3	G	105	A1BNI	C45-C58-C60	2.85	120.26	116.99
3	G	105	A1BNI	C16-C17-C19	2.84	122.58	117.87
3	G	105	A1BNI	C19-C20-C21	2.83	121.53	116.04
3	D	104	A1BNI	C16-C17-C19	2.83	122.56	117.87
3	D	104	A1BNI	C45-C58-C60	2.82	120.24	116.99
3	G	105	A1BNI	C45-O16-C46	2.79	123.19	118.13
3	A	103	A1BNI	C45-C58-C60	2.79	120.20	116.99
3	G	103	A1BNI	C45-O16-C46	2.77	123.14	118.13
3	A	103	A1BNI	C5-C4-C3	2.77	118.48	113.49
3	G	103	A1BNI	C15-O3-C1	2.75	121.01	113.94
3	A	103	A1BNI	C4-C3-N	2.74	116.50	110.83
3	A	104	A1BNI	O-C13-O1	-2.71	118.57	123.85
3	G	103	A1BNI	O14-C20-C19	-2.69	118.77	122.83
3	A	104	A1BNI	O16-C46-C47	2.69	110.93	107.38
3	D	103	A1BNI	C48-C49-C50	2.67	115.20	109.75
3	A	103	A1BNI	C44-C45-C58	-2.65	119.31	122.45
3	G	103	A1BNI	O16-C46-C47	2.63	110.85	107.38
3	D	104	A1BNI	C14-O-C13	2.59	121.79	115.92
3	D	103	A1BNI	C45-C58-C60	2.59	119.97	116.99
3	G	103	A1BNI	C45-C58-C60	2.58	119.96	116.99
3	G	103	A1BNI	O-C13-O1	-2.57	118.84	123.85
3	A	103	A1BNI	C19-C20-C21	2.55	120.99	116.04
3	D	103	A1BNI	C45-O16-C46	2.54	122.73	118.13
3	D	104	A1BNI	C19-C20-C21	2.51	120.90	116.04
3	G	105	A1BNI	C44-C45-C58	-2.51	119.48	122.45
3	D	104	A1BNI	C44-C45-C58	-2.49	119.50	122.45
3	G	103	A1BNI	C19-C20-C21	2.46	120.81	116.04
3	A	103	A1BNI	C14-O-C13	2.43	121.43	115.92
3	G	105	A1BNI	O14-C20-C19	-2.42	119.18	122.83
3	D	103	A1BNI	O16-C46-C47	2.39	110.53	107.38
3	A	104	A1BNI	C10-C9-C8	-2.39	119.08	121.72
3	G	105	A1BNI	C10-C9-C8	-2.36	119.11	121.72
3	A	104	A1BNI	C16-C17-C19	2.36	121.79	117.87

Continued on next page...

Continued from previous page...

Mol	Chain	Res	Type	Atoms	Z	Observed(°)	Ideal(°)
3	G	103	A1BNI	C10-C9-C8	-2.34	119.13	121.72
3	A	103	A1BNI	O-C13-O1	-2.33	119.32	123.85
3	G	105	A1BNI	O3-C1-C	2.30	111.00	106.99
3	D	103	A1BNI	C10-C9-C8	-2.30	119.18	121.72
3	A	103	A1BNI	C16-C17-C19	2.29	121.66	117.87
3	D	103	A1BNI	C44-C45-C58	-2.26	119.77	122.45
3	D	104	A1BNI	C10-C9-C8	-2.25	119.24	121.72
3	A	104	A1BNI	C22-C23-C24	2.25	115.50	111.20
3	D	104	A1BNI	O14-C20-C19	-2.24	119.46	122.83
3	G	103	A1BNI	C44-C45-C58	-2.22	119.81	122.45
3	D	103	A1BNI	O17-C46-C47	-2.19	107.44	110.84
3	D	103	A1BNI	O-C13-O1	-2.18	119.60	123.85
3	A	103	A1BNI	O8-C28-C29	-2.18	107.46	110.84
3	G	103	A1BNI	C14-O-C13	2.15	120.80	115.92
3	D	104	A1BNI	O3-C1-C	2.14	110.72	106.99
3	A	103	A1BNI	C51-C50-C49	-2.11	109.22	113.08
3	A	103	A1BNI	C10-C9-C8	-2.10	119.40	121.72
3	A	104	A1BNI	O12-C38-C39	2.08	111.36	106.74
3	A	103	A1BNI	O14-C20-C19	-2.08	119.70	122.83
3	D	103	A1BNI	C9-C8-C7	2.01	121.68	118.50

There are no chirality outliers.

All (51) torsion outliers are listed below:

Mol	Chain	Res	Type	Atoms
3	A	103	A1BNI	C16-C-C1-O3
3	A	103	A1BNI	C21-C-C1-O3
3	A	103	A1BNI	C16-C-C1-C2
3	A	103	A1BNI	C4-C3-N-C2
3	A	104	A1BNI	C2-C1-O3-C15
3	A	104	A1BNI	C47-C46-O16-C45
3	A	104	A1BNI	C3-C13-O-C14
3	D	103	A1BNI	O3-C1-C2-N
3	D	103	A1BNI	C21-C-C1-O3
3	D	103	A1BNI	C47-C46-O16-C45
3	D	104	A1BNI	C2-C1-O3-C15
3	D	104	A1BNI	C47-C46-O16-C45
3	G	103	A1BNI	C-C1-O3-C15
3	G	105	A1BNI	C2-C1-O3-C15
3	G	105	A1BNI	C47-C46-O16-C45
3	G	105	A1BNI	C3-C13-O-C14
3	G	103	A1BNI	O1-C13-O-C14

Continued on next page...

Continued from previous page...

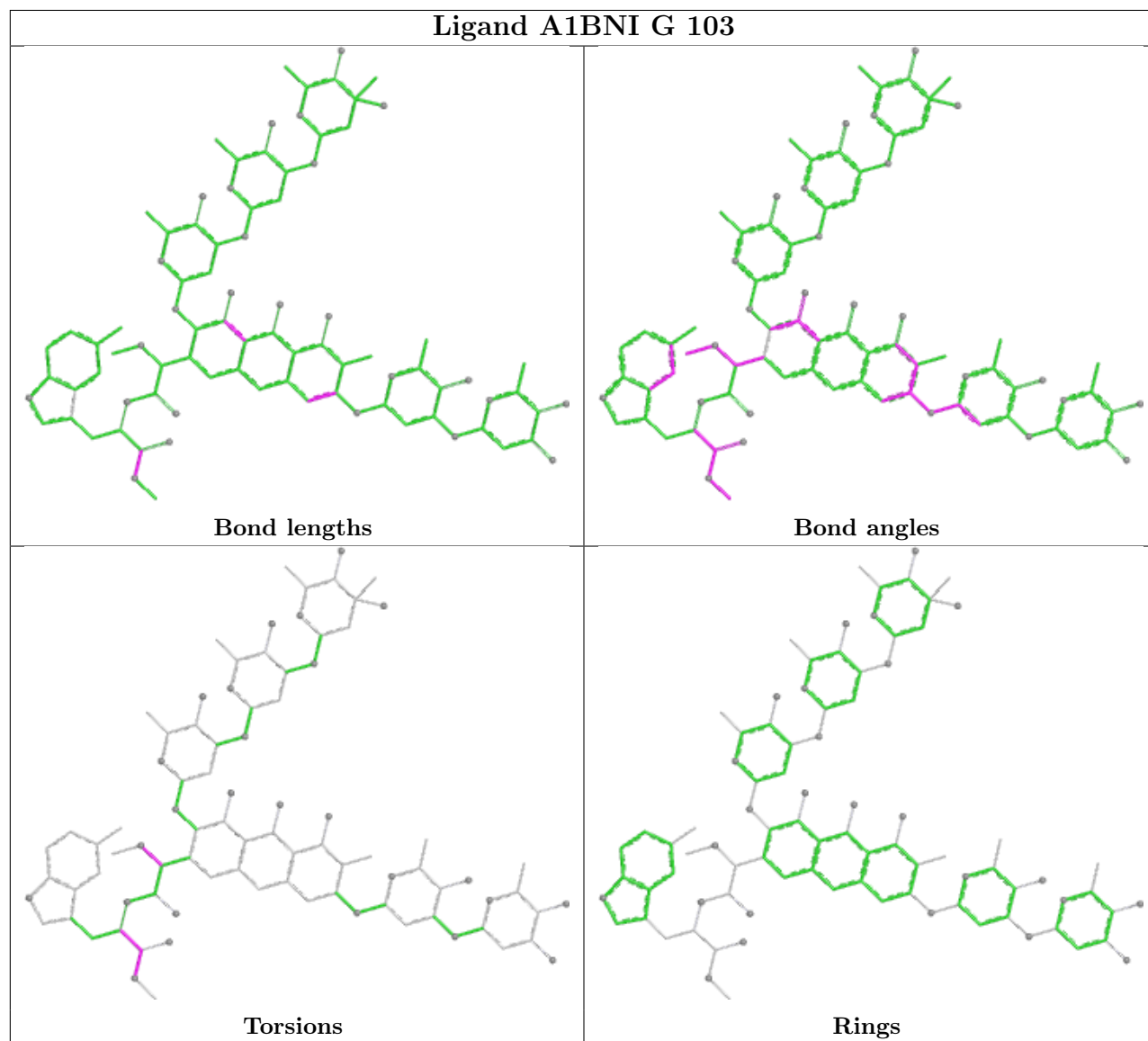
Mol	Chain	Res	Type	Atoms
3	G	103	A1BNI	C3-C13-O-C14
3	A	103	A1BNI	C3-C13-O-C14
3	A	104	A1BNI	O1-C13-O-C14
3	G	105	A1BNI	O1-C13-O-C14
3	D	103	A1BNI	C3-C13-O-C14
3	A	103	A1BNI	O1-C13-O-C14
3	D	103	A1BNI	O1-C13-O-C14
3	D	103	A1BNI	O3-C1-C2-O2
3	A	104	A1BNI	C-C1-O3-C15
3	D	104	A1BNI	C-C1-O3-C15
3	G	105	A1BNI	C-C1-O3-C15
3	D	103	A1BNI	C-C1-C2-O2
3	D	103	A1BNI	C-C1-C2-N
3	A	104	A1BNI	C3-C4-C5-C6
3	D	104	A1BNI	C3-C4-C5-C6
3	G	105	A1BNI	C3-C4-C5-C6
3	D	104	A1BNI	O1-C13-O-C14
3	D	104	A1BNI	C3-C13-O-C14
3	D	103	A1BNI	C2-C1-O3-C15
3	D	103	A1BNI	C16-C-C1-O3
3	D	103	A1BNI	C16-C-C1-C2
3	G	103	A1BNI	O-C13-C3-N
3	A	103	A1BNI	O3-C1-C2-N
3	A	103	A1BNI	O-C13-C3-N
3	G	103	A1BNI	O1-C13-C3-N
3	G	105	A1BNI	O-C13-C3-N
3	A	103	A1BNI	O1-C13-C3-N
3	G	105	A1BNI	O1-C13-C3-C4
3	G	105	A1BNI	O1-C13-C3-N
3	D	103	A1BNI	C21-C-C1-C2
3	D	104	A1BNI	O1-C13-C3-N
3	D	104	A1BNI	O-C13-C3-N
3	A	103	A1BNI	O3-C1-C2-O2
3	G	105	A1BNI	O-C13-C3-C4

There are no ring outliers.

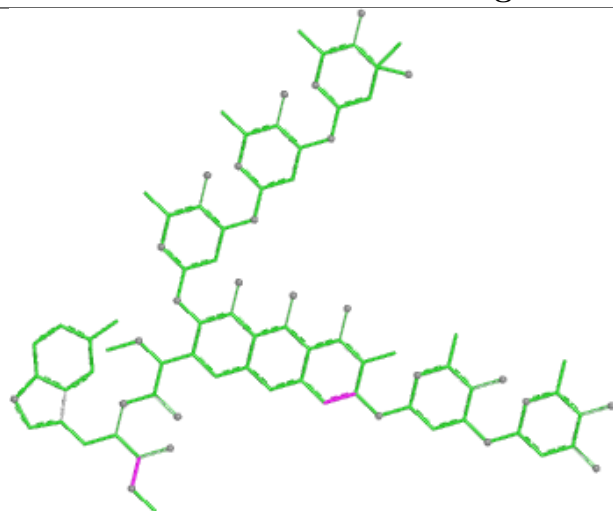
No monomer is involved in short contacts.

The following is a two-dimensional graphical depiction of Mogul quality analysis of bond lengths, bond angles, torsion angles, and ring geometry for all instances of the Ligand of Interest. In addition, ligands with molecular weight > 250 and outliers as shown on the validation Tables will also be included. For torsion angles, if less than 5% of the Mogul distribution of torsion angles is within 10 degrees of the torsion angle in question, then that torsion angle is considered an outlier.

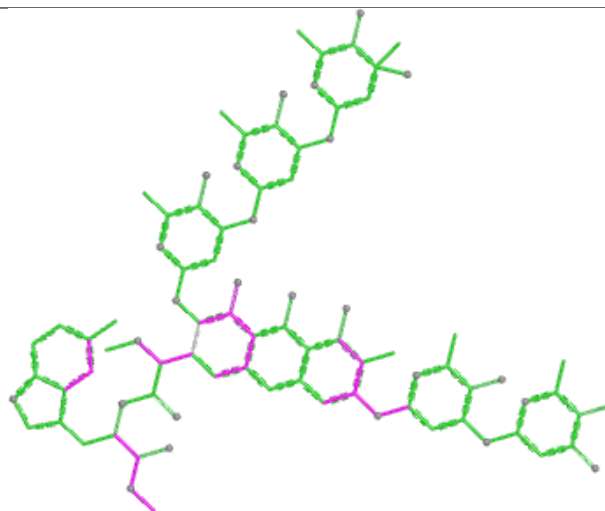
Any bond that is central to one or more torsion angles identified as an outlier by Mogul will be highlighted in the graph. For rings, the root-mean-square deviation (RMSD) between the ring in question and similar rings identified by Mogul is calculated over all ring torsion angles. If the average RMSD is greater than 60 degrees and the minimal RMSD between the ring in question and any Mogul-identified rings is also greater than 60 degrees, then that ring is considered an outlier. The outliers are highlighted in purple. The color gray indicates Mogul did not find sufficient equivalents in the CSD to analyse the geometry.



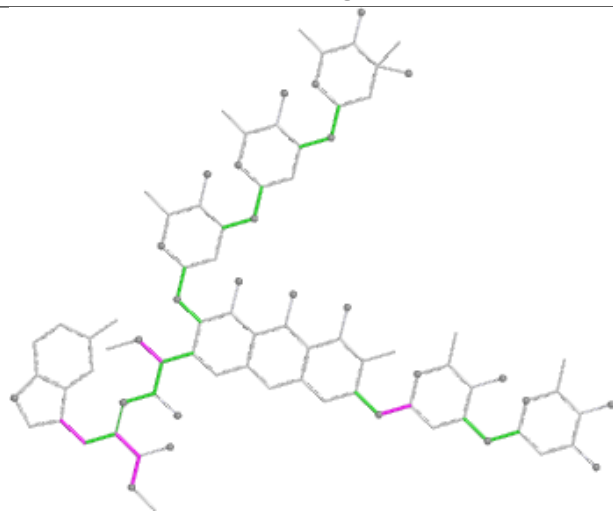
Ligand A1BNI D 104



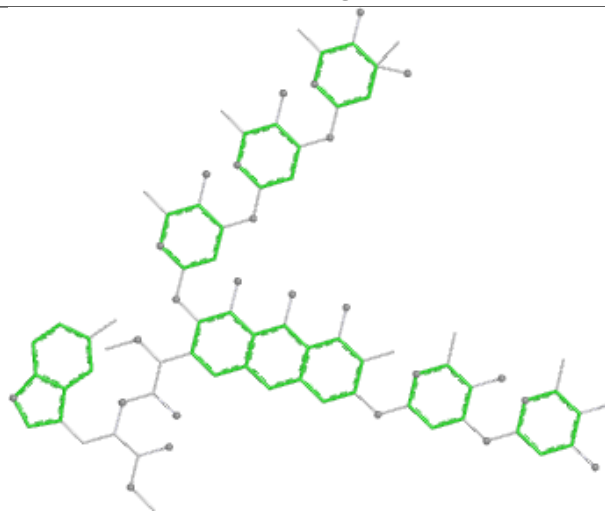
Bond lengths



Bond angles

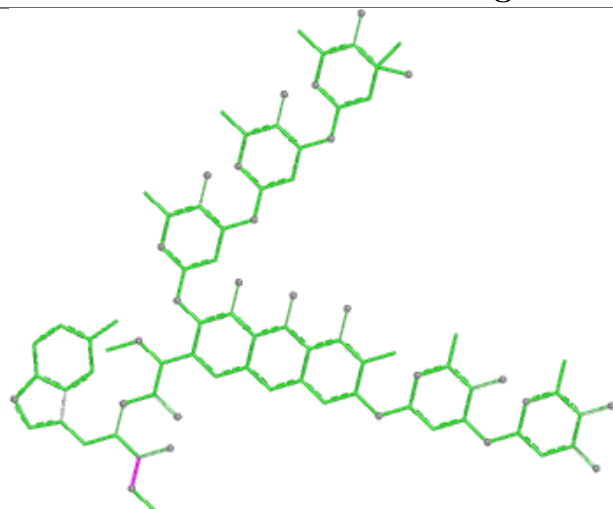


Torsions

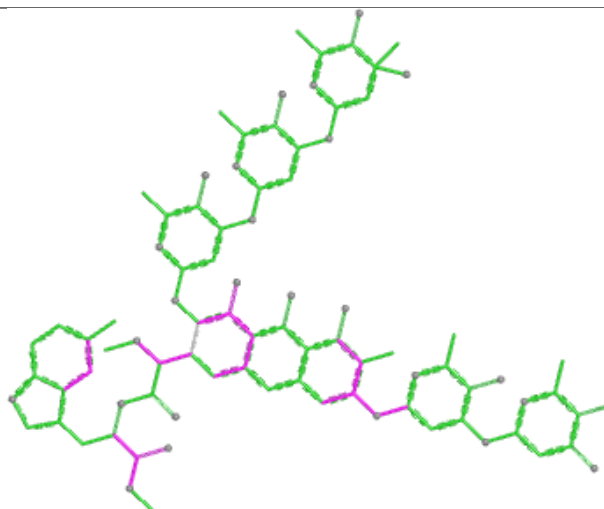


Rings

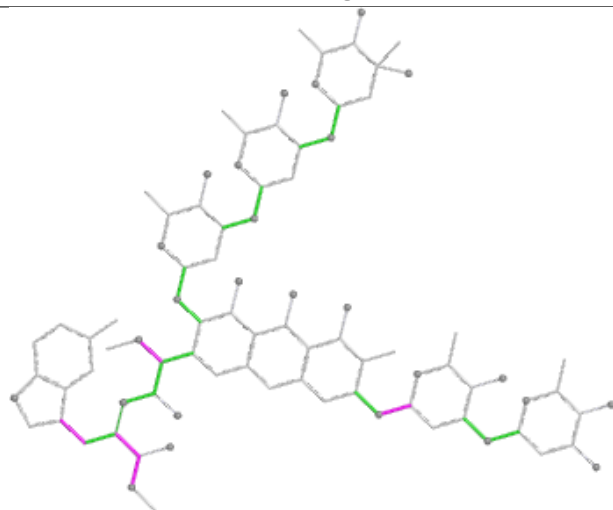
Ligand A1BNI G 105



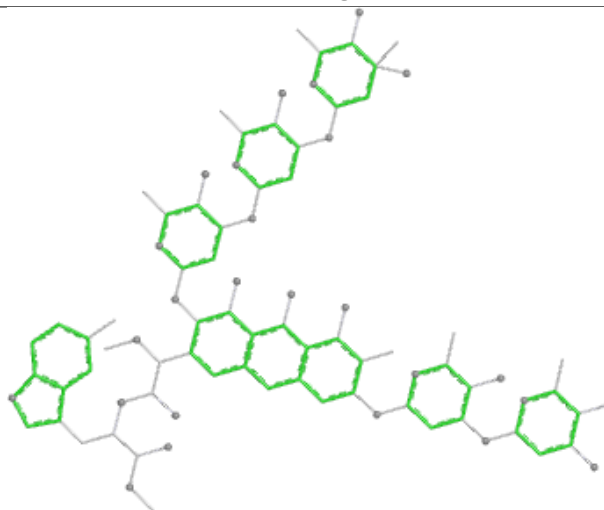
Bond lengths



Bond angles

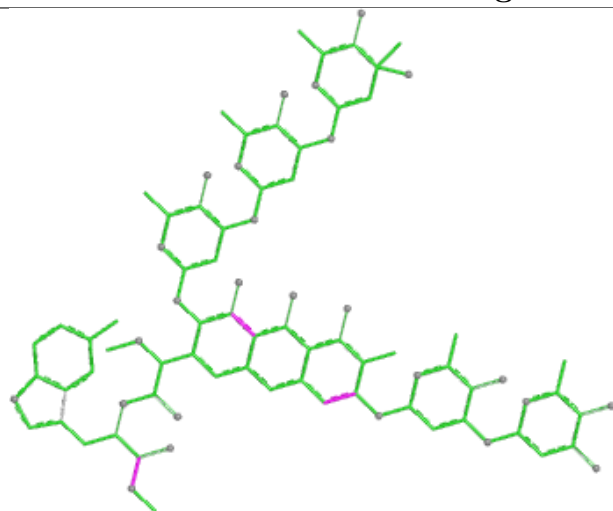


Torsions

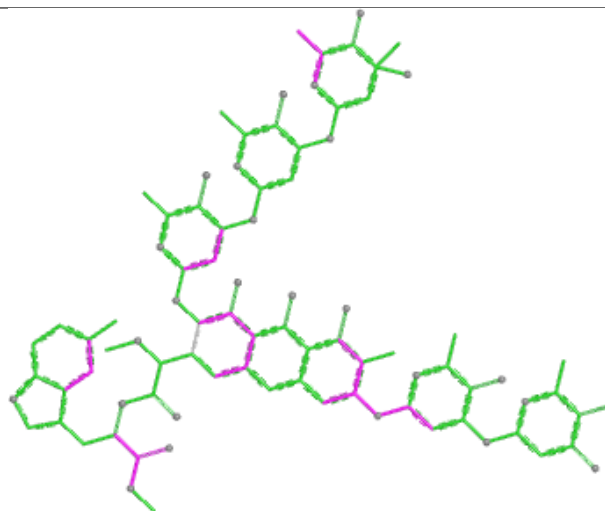


Rings

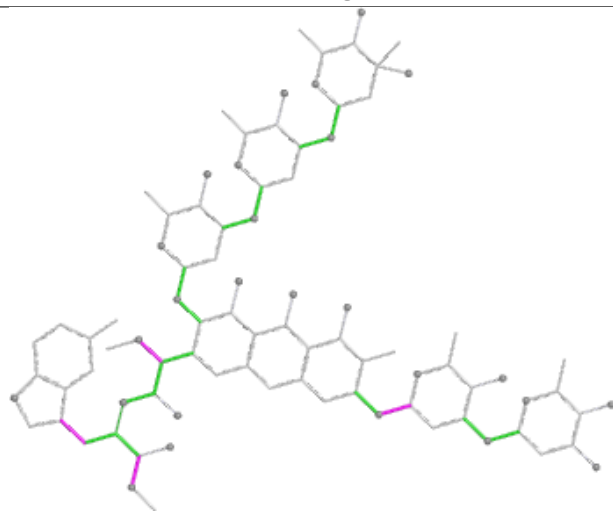
Ligand A1BNI A 104



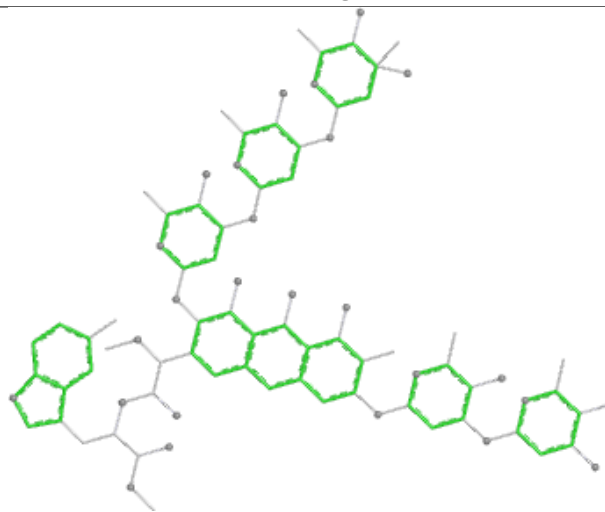
Bond lengths



Bond angles

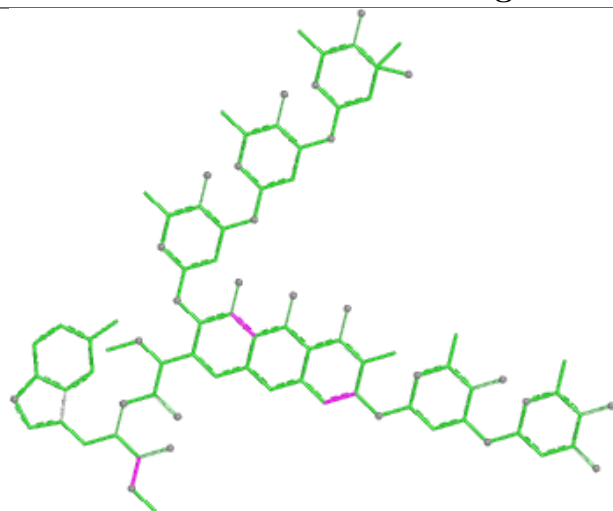


Torsions

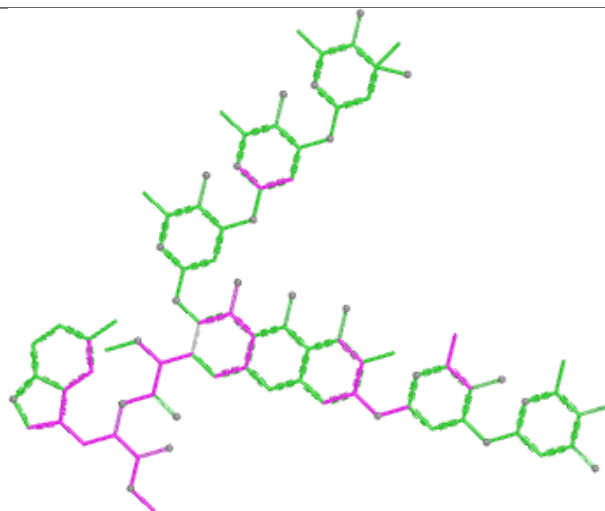


Rings

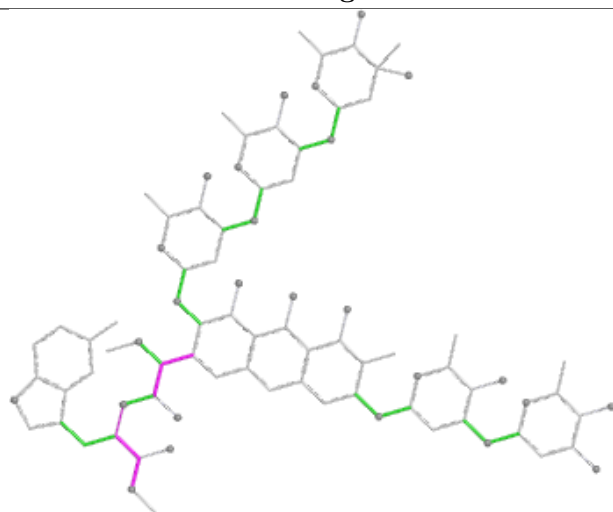
Ligand A1BNI A 103



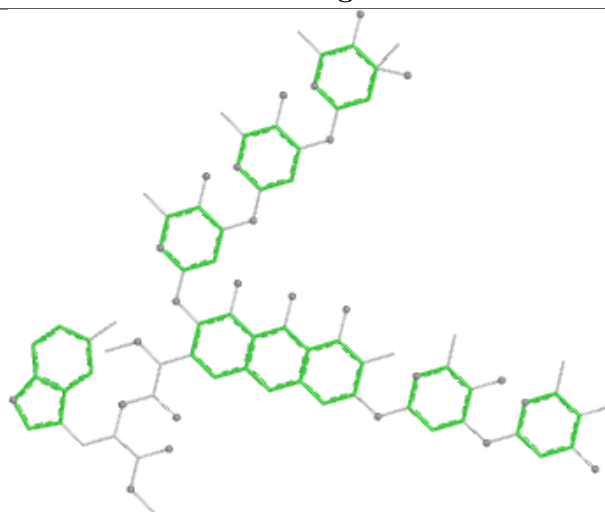
Bond lengths



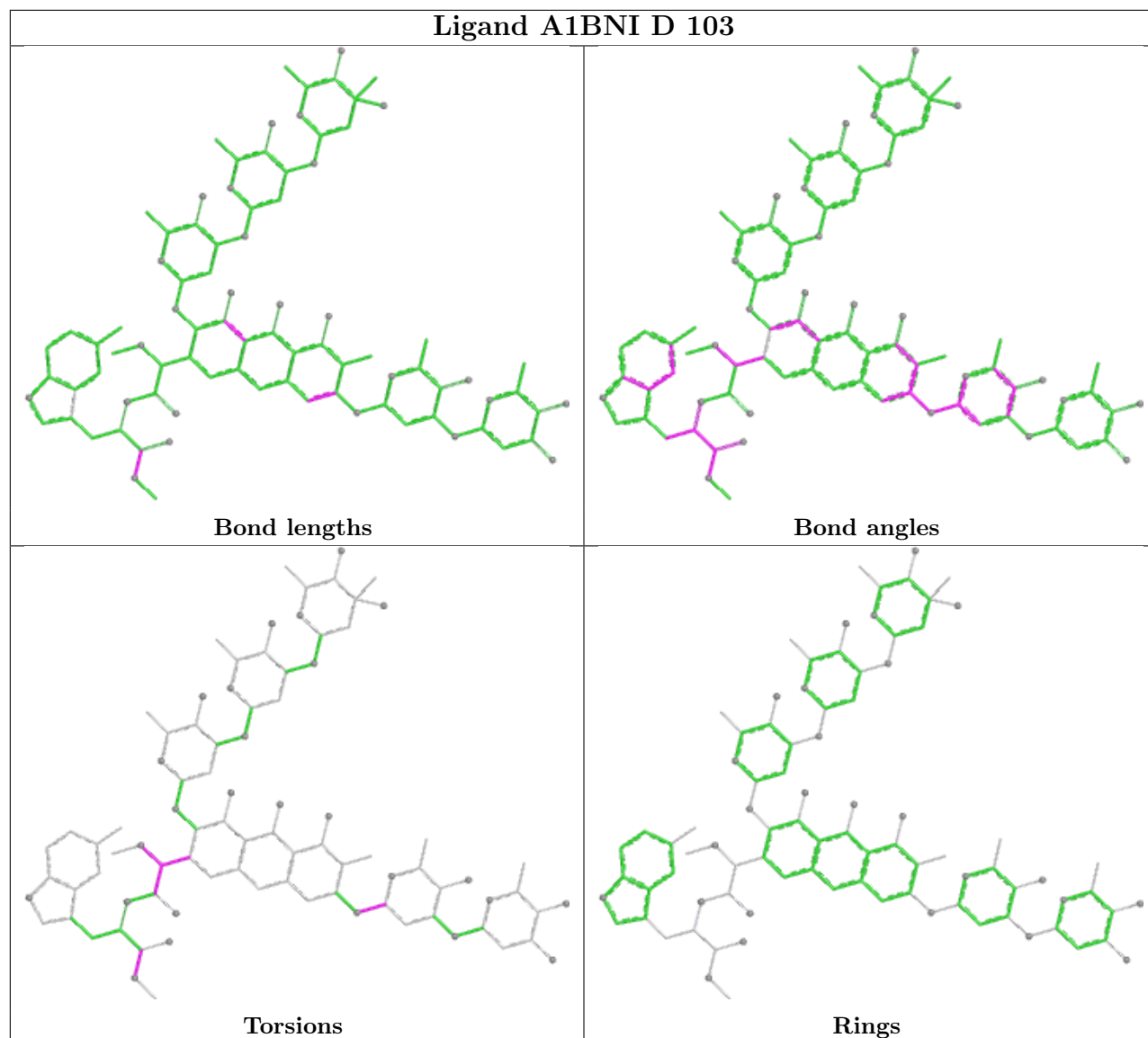
Bond angles



Torsions



Rings



5.7 Other polymers [i](#)

There are no such residues in this entry.

5.8 Polymer linkage issues [i](#)

There are no chain breaks in this entry.

6 Fit of model and data [i](#)

6.1 Protein, DNA and RNA chains [i](#)

In the following table, the column labelled ‘#RSRZ> 2’ contains the number (and percentage) of RSRZ outliers, followed by percent RSRZ outliers for the chain as percentile scores relative to all X-ray entries and entries of similar resolution. The OWAB column contains the minimum, median, 95th percentile and maximum values of the occupancy-weighted average B-factor per residue. The column labelled ‘Q< 0.9’ lists the number of (and percentage) of residues with an average occupancy less than 0.9.

Mol	Chain	Analysed	<RSRZ>	#RSRZ>2	OWAB(Å ²)	Q<0.9
1	A	10/10 (100%)	-0.62	0 100 100	38, 52, 97, 101	0
1	B	10/10 (100%)	-1.15	0 100 100	38, 43, 63, 71	0
1	D	10/10 (100%)	-0.93	0 100 100	40, 55, 90, 105	0
1	E	10/10 (100%)	-0.86	0 100 100	40, 49, 80, 87	0
1	G	10/10 (100%)	-0.97	0 100 100	43, 56, 87, 93	0
1	H	10/10 (100%)	-0.86	0 100 100	43, 50, 91, 108	0
All	All	60/60 (100%)	-0.90	0 100 100	38, 51, 97, 108	0

There are no RSRZ outliers to report.

6.2 Non-standard residues in protein, DNA, RNA chains [i](#)

There are no non-standard protein/DNA/RNA residues in this entry.

6.3 Carbohydrates [i](#)

There are no monosaccharides in this entry.

6.4 Ligands [i](#)

In the following table, the Atoms column lists the number of modelled atoms in the group and the number defined in the chemical component dictionary. The B-factors column lists the minimum, median, 95th percentile and maximum values of B factors of atoms in the group. The column labelled ‘Q< 0.9’ lists the number of atoms with occupancy less than 0.9.

Mol	Type	Chain	Res	Atoms	RSCC	RSR	B-factors(Å ²)	Q<0.9
4	CL	E	107	1/1	0.94	0.08	33,33,33,33	0

Continued on next page...

Continued from previous page...

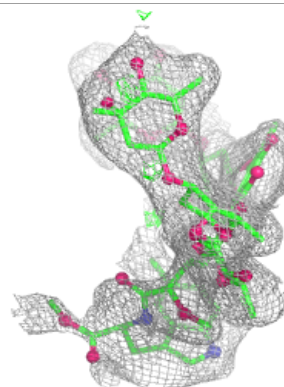
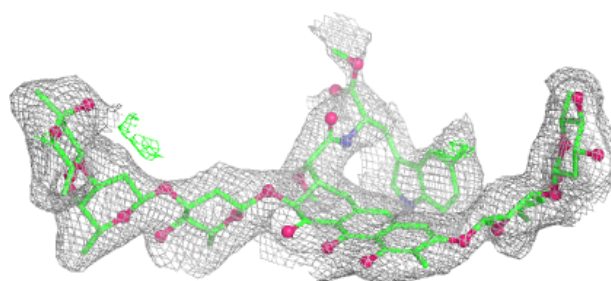
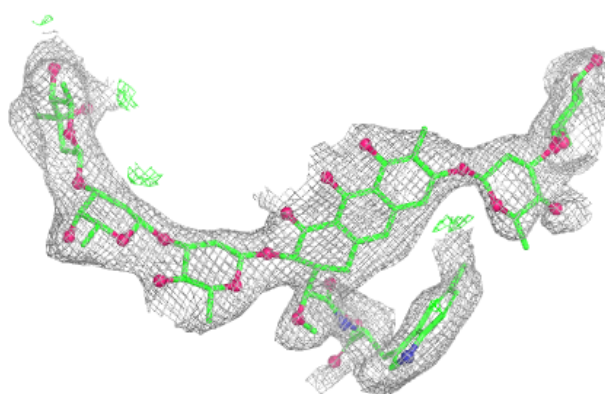
Mol	Type	Chain	Res	Atoms	RSCC	RSR	B-factors(Å ²)	Q<0.9
4	CL	B	108	1/1	0.96	0.09	40,40,40,40	1
5	NA	G	107	1/1	0.96	0.06	46,46,46,46	0
3	A1BNI	G	103	88/88	0.97	0.07	49,56,67,70	0
2	ZN	G	106	1/1	0.97	0.15	126,126,126,126	0
3	A1BNI	D	103	88/88	0.97	0.06	55,62,87,91	0
3	A1BNI	D	104	88/88	0.97	0.07	44,49,55,58	0
3	A1BNI	A	104	88/88	0.98	0.06	36,43,56,57	0
2	ZN	B	101	1/1	0.98	0.04	42,42,42,42	0
2	ZN	B	105	1/1	0.98	0.17	65,65,65,65	0
2	ZN	D	105	1/1	0.98	0.08	81,81,81,81	0
3	A1BNI	G	105	88/88	0.98	0.07	43,48,58,60	0
2	ZN	A	105	1/1	0.98	0.06	94,94,94,94	0
2	ZN	H	105	1/1	0.98	0.20	68,68,68,68	0
5	NA	D	106	1/1	0.98	0.10	70,70,70,70	0
5	NA	E	108	1/1	0.98	0.15	36,36,36,36	0
3	A1BNI	A	103	88/88	0.98	0.06	45,51,65,67	0
5	NA	H	106	1/1	0.98	0.04	76,76,76,76	0
2	ZN	E	106	1/1	0.99	0.02	43,43,43,43	0
2	ZN	G	104	1/1	0.99	0.03	87,87,87,87	0
2	ZN	D	101	1/1	0.99	0.03	53,53,53,53	0
2	ZN	E	103	1/1	0.99	0.04	38,38,38,38	0
2	ZN	E	105	1/1	0.99	0.03	52,52,52,52	0
4	CL	B	107	1/1	0.99	0.06	67,67,67,67	1
2	ZN	H	103	1/1	1.00	0.01	40,40,40,40	0
2	ZN	H	104	1/1	1.00	0.05	46,46,46,46	0
2	ZN	D	102	1/1	1.00	0.02	50,50,50,50	0
2	ZN	B	102	1/1	1.00	0.03	41,41,41,41	0
2	ZN	E	101	1/1	1.00	0.01	49,49,49,49	0
2	ZN	E	102	1/1	1.00	0.02	46,46,46,46	0
2	ZN	B	103	1/1	1.00	0.02	32,32,32,32	0
2	ZN	E	104	1/1	1.00	0.02	40,40,40,40	0
2	ZN	B	104	1/1	1.00	0.02	35,35,35,35	0
2	ZN	A	101	1/1	1.00	0.02	49,49,49,49	0
2	ZN	G	101	1/1	1.00	0.02	51,51,51,51	0
2	ZN	G	102	1/1	1.00	0.02	46,46,46,46	0
2	ZN	B	106	1/1	1.00	0.04	41,41,41,41	0
2	ZN	A	102	1/1	1.00	0.01	41,41,41,41	0
2	ZN	H	101	1/1	1.00	0.01	44,44,44,44	0
2	ZN	H	102	1/1	1.00	0.02	42,42,42,42	0

The following is a graphical depiction of the model fit to experimental electron density of all instances of the Ligand of Interest. In addition, ligands with molecular weight > 250 and outliers as shown on the geometry validation Tables will also be included. Each fit is shown from different

orientation to approximate a three-dimensional view.

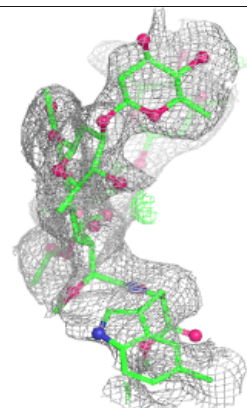
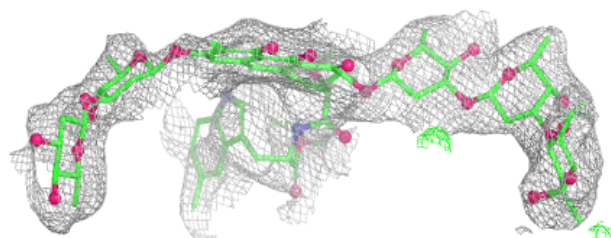
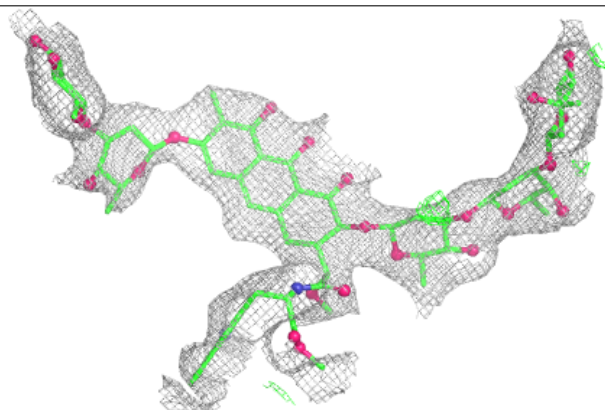
Electron density around A1BNI G 103:

$2mF_o-DF_c$ (at 0.7 rmsd) in gray
 mF_o-DF_c (at 3 rmsd) in purple (negative)
and green (positive)



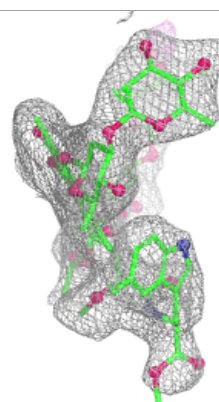
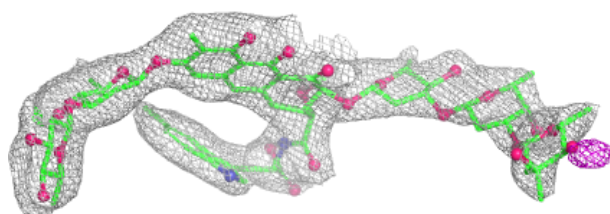
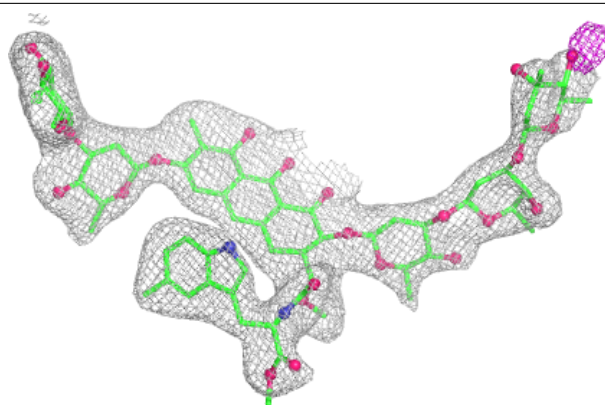
Electron density around A1BNI D 103:

$2mF_o-DF_c$ (at 0.7 rmsd) in gray
 mF_o-DF_c (at 3 rmsd) in purple (negative)
and green (positive)

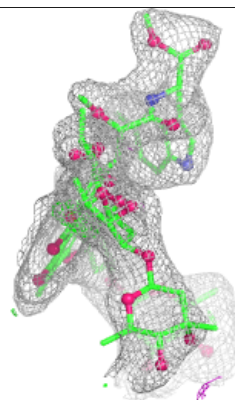
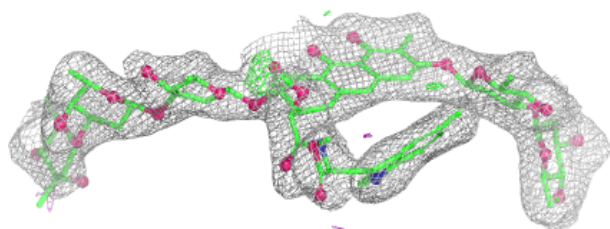
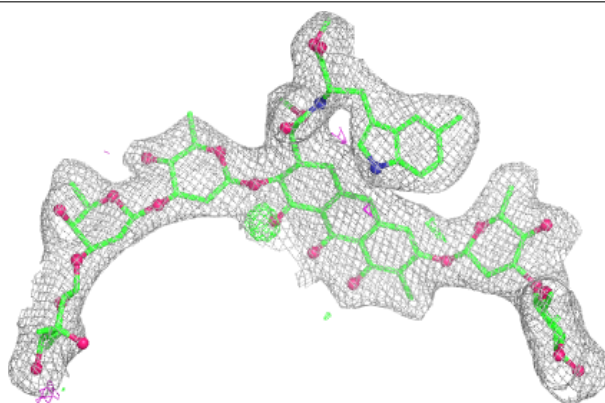


Electron density around A1BNI D 104:

$2mF_o-DF_c$ (at 0.7 rmsd) in gray
 mF_o-DF_c (at 3 rmsd) in purple (negative)
and green (positive)

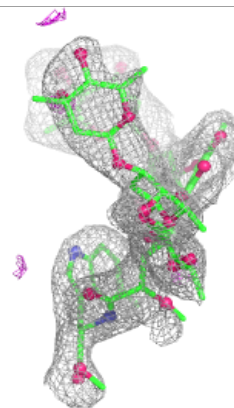
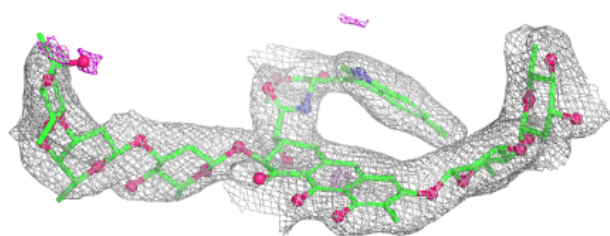
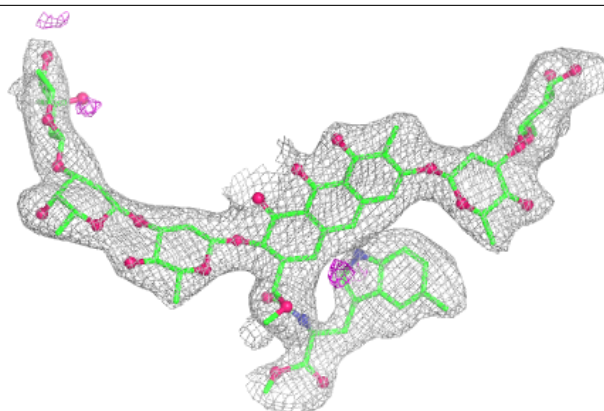
**Electron density around A1BNI A 104:**

$2mF_o-DF_c$ (at 0.7 rmsd) in gray
 mF_o-DF_c (at 3 rmsd) in purple (negative)
and green (positive)

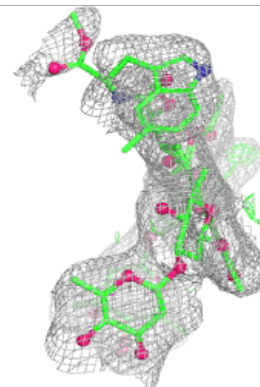
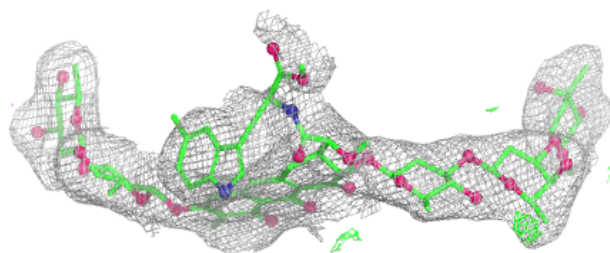
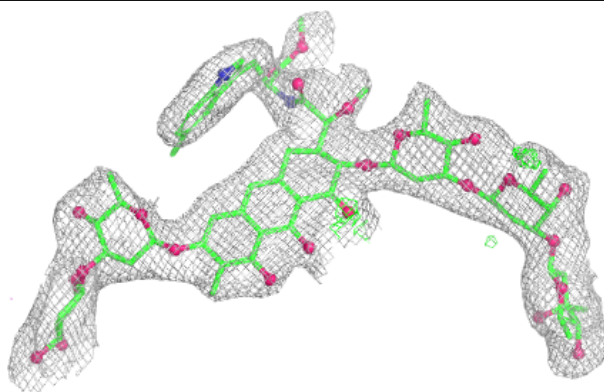


Electron density around A1BNI G 105:

$2mF_o-DF_c$ (at 0.7 rmsd) in gray
 mF_o-DF_c (at 3 rmsd) in purple (negative)
and green (positive)

**Electron density around A1BNI A 103:**

$2mF_o-DF_c$ (at 0.7 rmsd) in gray
 mF_o-DF_c (at 3 rmsd) in purple (negative)
and green (positive)



6.5 Other polymers [i](#)

There are no such residues in this entry.