



# wwPDB X-ray Structure Validation Summary Report ⓘ

Jan 20, 2025 – 10:11 AM EST

PDB ID : 9MVA  
Title : Mycobacterium abscessus Eis2 in complex with Non-hydrolyzable CoenzymeA  
Authors : Jayasinghe, T.D.; Coker, A.L.; Rajendra, T.; Miller, D.; Lee, R.E.  
Deposited on : 2025-01-15  
Resolution : 1.80 Å(reported)

This is a wwPDB X-ray Structure Validation Summary Report for a publicly released PDB entry.

We welcome your comments at [validation@mail.wwpdb.org](mailto:validation@mail.wwpdb.org)

A user guide is available at

<https://www.wwpdb.org/validation/2017/XrayValidationReportHelp>

with specific help available everywhere you see the ⓘ symbol.

The types of validation reports are described at

<http://www.wwpdb.org/validation/2017/FAQs#types>.

---

The following versions of software and data (see [references ⓘ](#)) were used in the production of this report:

MolProbity	:	4.02b-467
Mogul	:	2022.3.0, CSD as543be (2022)
Xtriage (Phenix)	:	1.21
EDS	:	3.0
buster-report	:	1.1.7 (2018)
Percentile statistics	:	20231227.v01 (using entries in the PDB archive December 27th 2023)
CCP4	:	9.0.004 (Gargrove)
Density-Fitness	:	1.0.11
Ideal geometry (proteins)	:	Engh & Huber (2001)
Ideal geometry (DNA, RNA)	:	Parkinson et al. (1996)
Validation Pipeline (wwPDB-VP)	:	2.40

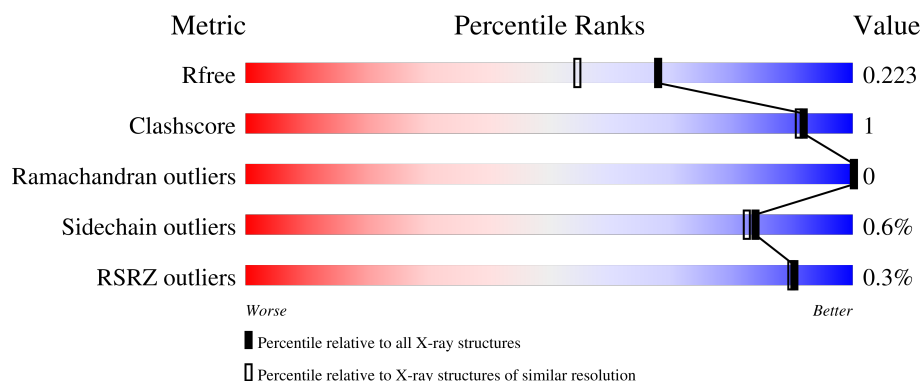
# 1 Overall quality at a glance

The following experimental techniques were used to determine the structure:

## *X-RAY DIFFRACTION*

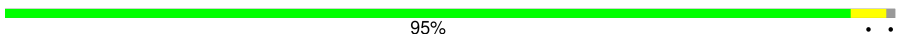
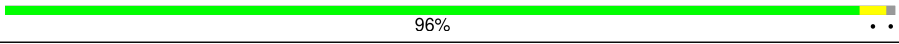
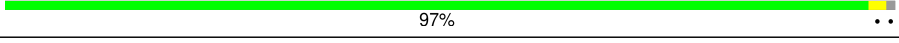
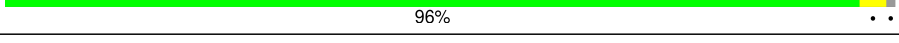
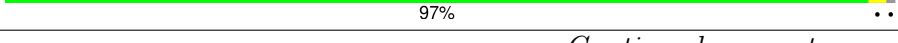
The reported resolution of this entry is 1.80 Å.

Percentile scores (ranging between 0-100) for global validation metrics of the entry are shown in the following graphic. The table shows the number of entries on which the scores are based.



Metric	Whole archive (#Entries)	Similar resolution (#Entries, resolution range(Å))
$R_{free}$	164625	7108 (1.80-1.80)
Clashscore	180529	8162 (1.80-1.80)
Ramachandran outliers	177936	8077 (1.80-1.80)
Sidechain outliers	177891	8076 (1.80-1.80)
RSRZ outliers	164620	7108 (1.80-1.80)

The table below summarises the geometric issues observed across the polymeric chains and their fit to the electron density. The red, orange, yellow and green segments of the lower bar indicate the fraction of residues that contain outliers for  $\geq 3$ , 2, 1 and 0 types of geometric quality criteria respectively. A grey segment represents the fraction of residues that are not modelled. The numeric value for each fraction is indicated below the corresponding segment, with a dot representing fractions  $\leq 5\%$ . The upper red bar (where present) indicates the fraction of residues that have poor fit to the electron density. The numeric value is given above the bar.

Mol	Chain	Length	Quality of chain
1	A	412	 95% ..
1	B	412	 96% ..
1	C	412	 97% ..
1	D	412	 96% ..
1	E	412	 97% ..

*Continued on next page...*

Continued from previous page...

Mol	Chain	Length	Quality of chain
1	F	412	<div><div></div><div>96%</div><div></div></div> <div>..</div>

## 2 Entry composition

There are 8 unique types of molecules in this entry. The entry contains 22281 atoms, of which 0 are hydrogens and 0 are deuteriums.

In the tables below, the ZeroOcc column contains the number of atoms modelled with zero occupancy, the AltConf column contains the number of residues with at least one atom in alternate conformation and the Trace column contains the number of residues modelled with at most 2 atoms.

- Molecule 1 is a protein called Amikacin resistance N-acetyltransferase Eis2.

Mol	Chain	Residues	Atoms					ZeroOcc	AltConf	Trace
1	A	409	Total	C	N	O	S	0	3	0
			3140	1982	547	601	10			
1	B	409	Total	C	N	O	S	0	3	0
			3146	1982	548	606	10			
1	C	408	Total	C	N	O	S	0	7	0
			3162	1998	553	601	10			
1	D	408	Total	C	N	O	S	0	6	0
			3164	1996	551	607	10			
1	E	409	Total	C	N	O	S	0	3	0
			3142	1982	549	601	10			
1	F	409	Total	C	N	O	S	0	3	0
			3156	1989	553	604	10			

There are 6 discrepancies between the modelled and reference sequences:

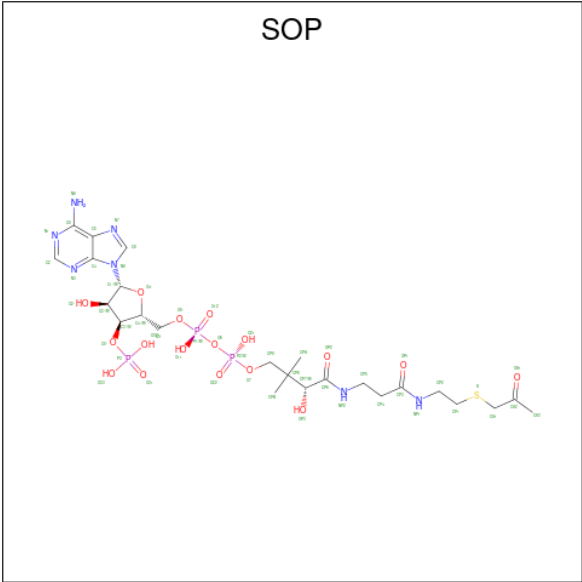
Chain	Residue	Modelled	Actual	Comment	Reference
A	0	SER	-	expression tag	UNP A0A418L6F2
B	0	SER	-	expression tag	UNP A0A418L6F2
C	0	SER	-	expression tag	UNP A0A418L6F2
D	0	SER	-	expression tag	UNP A0A418L6F2
E	0	SER	-	expression tag	UNP A0A418L6F2
F	0	SER	-	expression tag	UNP A0A418L6F2

- Molecule 2 is 1,2-ETHANEDIOL (three-letter code: EDO) (formula: C<sub>2</sub>H<sub>6</sub>O<sub>2</sub>).



Mol	Chain	Residues	Atoms			ZeroOcc	AltConf
2	A	1	Total	C	O	0	0
			4	2	2		
2	B	1	Total	C	O	0	0
			4	2	2		
2	C	1	Total	C	O	0	0
			4	2	2		
2	C	1	Total	C	O	0	0
			4	2	2		
2	D	1	Total	C	O	0	0
			4	2	2		
2	E	1	Total	C	O	0	0
			4	2	2		
2	F	1	Total	C	O	0	0
			4	2	2		

- Molecule 3 is [(2R,3S,4R,5R)-5-(6-AMINO-9H-PURIN-9-YL)-4-HYDROXY-3-(PHOSPHONOXY)TETRAHYDROFURAN-2-YL]METHYL (3R)-3-HYDROXY-2,2-DIMETHYL-4-OXO-4-{[3-OXO-3-({2-[(2-OXOPROPYL)THIO]ETHYL}AMINO)PROPYL]AMINO}BUTYL DIHYDROGEN DIPHOSPHATE (three-letter code: SOP) (formula: C<sub>24</sub>H<sub>40</sub>N<sub>7</sub>O<sub>17</sub>P<sub>3</sub>S) (labeled as "Ligand of Interest" by depositor).



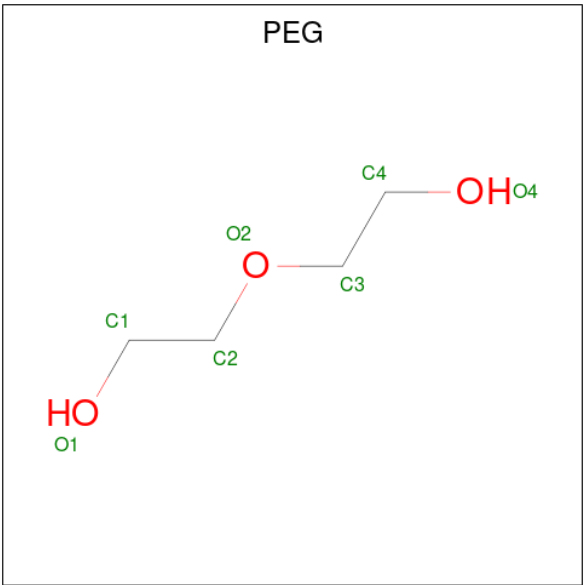
Mol	Chain	Residues	Atoms						ZeroOcc	AltConf
3	A	1	Total	C	N	O	P	S	0	0
			52	24	7	17	3	1		
3	B	1	Total	C	N	O	P	S	0	0
			52	24	7	17	3	1		
3	C	1	Total	C	N	O	P	S	0	0
			52	24	7	17	3	1		
3	D	1	Total	C	N	O	P	S	0	0
			52	24	7	17	3	1		
3	E	1	Total	C	N	O	P	S	0	0
			52	24	7	17	3	1		
3	F	1	Total	C	N	O	P	S	0	0
			52	24	7	17	3	1		

- Molecule 4 is TRIETHYLENE GLYCOL (three-letter code: PGE) (formula: C<sub>6</sub>H<sub>14</sub>O<sub>4</sub>).



Mol	Chain	Residues	Atoms			ZeroOcc	AltConf
4	A	1	Total	C	O	0	0
			10	6	4		
4	B	1	Total	C	O	0	0
			10	6	4		
4	C	1	Total	C	O	0	0
			10	6	4		
4	D	1	Total	C	O	0	0
			10	6	4		
4	E	1	Total	C	O	0	0
			10	6	4		
4	E	1	Total	C	O	0	0
			10	6	4		
4	E	1	Total	C	O	0	0
			10	6	4		
4	F	1	Total	C	O	0	0
			10	6	4		
4	F	1	Total	C	O	0	0
			10	6	4		

- Molecule 5 is DI(HYDROXYETHYL)ETHER (three-letter code: PEG) (formula: C<sub>4</sub>H<sub>10</sub>O<sub>3</sub>).



Mol	Chain	Residues	Atoms			ZeroOcc	AltConf
5	A	1	Total	C	O	0	0
			7	4	3		
5	A	1	Total	C	O	0	0
			7	4	3		
5	B	1	Total	C	O	0	0
			7	4	3		
5	B	1	Total	C	O	0	0
			7	4	3		
5	B	1	Total	C	O	0	0
			7	4	3		
5	B	1	Total	C	O	0	0
			7	4	3		
5	C	1	Total	C	O	0	0
			7	4	3		
5	C	1	Total	C	O	0	0
			7	4	3		
5	D	1	Total	C	O	0	0
			7	4	3		
5	D	1	Total	C	O	0	0
			7	4	3		
5	D	1	Total	C	O	0	0
			7	4	3		
5	E	1	Total	C	O	0	0
			7	4	3		
5	E	1	Total	C	O	0	0
			7	4	3		
5	F	1	Total	C	O	0	0
			7	4	3		

Continued on next page...



*Continued from previous page...*

Mol	Chain	Residues	Atoms			ZeroOcc	AltConf
5	F	1	Total	C	O	0	0
			7	4	3		
5	F	1	Total	C	O	0	0
			7	4	3		
5	F	1	Total	C	O	0	0
			7	4	3		

- Molecule 6 is CHLORIDE ION (three-letter code: CL) (formula: Cl).

Mol	Chain	Residues	Atoms		ZeroOcc	AltConf
6	A	1	Total	Cl	0	0
			1	1		
6	B	1	Total	Cl	0	0
			1	1		
6	C	1	Total	Cl	0	0
			1	1		
6	D	1	Total	Cl	0	0
			1	1		
6	E	1	Total	Cl	0	0
			1	1		
6	F	1	Total	Cl	0	0
			1	1		

- Molecule 7 is SODIUM ION (three-letter code: NA) (formula: Na).

Mol	Chain	Residues	Atoms		ZeroOcc	AltConf
7	A	2	Total	Na	0	0
			2	2		
7	B	3	Total	Na	0	0
			3	3		
7	C	2	Total	Na	0	0
			2	2		
7	D	3	Total	Na	0	0
			3	3		
7	E	2	Total	Na	0	0
			2	2		
7	F	2	Total	Na	0	0
			2	2		

- Molecule 8 is water.

Mol	Chain	Residues	Atoms		ZeroOcc	AltConf
8	A	444	Total 444	O 444	0	0
8	B	455	Total 455	O 455	0	0
8	C	466	Total 466	O 466	0	0
8	D	466	Total 466	O 466	0	0
8	E	482	Total 482	O 482	0	0
8	F	489	Total 489	O 489	0	0

### 3 Residue-property plots [i](#)

These plots are drawn for all protein, RNA, DNA and oligosaccharide chains in the entry. The first graphic for a chain summarises the proportions of the various outlier classes displayed in the second graphic. The second graphic shows the sequence view annotated by issues in geometry and electron density. Residues are color-coded according to the number of geometric quality criteria for which they contain at least one outlier: green = 0, yellow = 1, orange = 2 and red = 3 or more. A red dot above a residue indicates a poor fit to the electron density ( $RSRZ > 2$ ). Stretches of 2 or more consecutive residues without any outlier are shown as a green connector. Residues present in the sample, but not in the model, are shown in grey.

- Molecule 1: Amikacin resistance N-acetyltransferase Eis2

Chain A:  95%



- Molecule 1: Amikacin resistance N-acetyltransferase Eis2

Chain B:  96%



- Molecule 1: Amikacin resistance N-acetyltransferase Eis2

Chain C:  97%



- Molecule 1: Amikacin resistance N-acetyltransferase Eis2

Chain D:  96%



- Molecule 1: Amikacin resistance N-acetyltransferase Eis2

Chain E:  97%



- Molecule 1: Amikacin resistance N-acetyltransferase Eis2

Chain F:  96% ..



## 4 Data and refinement statistics

Property	Value	Source
Space group	C 2 2 21	Depositor
Cell constants a, b, c, $\alpha$ , $\beta$ , $\gamma$	195.69Å 209.59Å 152.29Å 90.00° 90.00° 90.00°	Depositor
Resolution (Å)	34.36 – 1.80 34.36 – 1.80	Depositor EDS
% Data completeness (in resolution range)	99.8 (34.36-1.80) 99.8 (34.36-1.80)	Depositor EDS
$R_{merge}$	0.17	Depositor
$R_{sym}$	(Not available)	Depositor
$\langle I/\sigma(I) \rangle$ <sup>1</sup>	1.50 (at 1.58Å)	Xtriage
Refinement program	PHENIX 1.21.2_5419	Depositor
R, $R_{free}$	0.191 , 0.222 0.192 , 0.223	Depositor DCC
$R_{free}$ test set	284874 reflections (0.48%)	wwPDB-VP
Wilson B-factor (Å <sup>2</sup> )	15.7	Xtriage
Anisotropy	0.492	Xtriage
Bulk solvent $k_{sol}$ (e/Å <sup>3</sup> ), $B_{sol}$ (Å <sup>2</sup> )	0.37 , 48.1	EDS
L-test for twinning <sup>2</sup>	$\langle  L  \rangle = 0.59$ , $\langle L^2 \rangle = 0.44$	Xtriage
Estimated twinning fraction	No twinning to report.	Xtriage
$F_o, F_c$ correlation	0.96	EDS
Total number of atoms	22281	wwPDB-VP
Average B, all atoms (Å <sup>2</sup> )	19.0	wwPDB-VP

Xtriage's analysis on translational NCS is as follows: *The analyses of the Patterson function reveals a significant off-origin peak that is 54.11 % of the origin peak, indicating pseudo-translational symmetry. The chance of finding a peak of this or larger height randomly in a structure without pseudo-translational symmetry is equal to 3.8257e-05. The detected translational NCS is most likely also responsible for the elevated intensity ratio.*

<sup>1</sup>Intensities estimated from amplitudes.

<sup>2</sup>Theoretical values of  $\langle |L| \rangle$ ,  $\langle L^2 \rangle$  for acentric reflections are 0.5, 0.333 respectively for untwinned datasets, and 0.375, 0.2 for perfectly twinned datasets.

## 5 Model quality [i](#)

### 5.1 Standard geometry [i](#)

Bond lengths and bond angles in the following residue types are not validated in this section: PEG, PGE, NA, EDO, CL, SOP

The Z score for a bond length (or angle) is the number of standard deviations the observed value is removed from the expected value. A bond length (or angle) with  $|Z| > 5$  is considered an outlier worth inspection. RMSZ is the root-mean-square of all Z scores of the bond lengths (or angles).

Mol	Chain	Bond lengths		Bond angles	
		RMSZ	# Z  >5	RMSZ	# Z  >5
1	A	0.33	0/3212	0.59	0/4375
1	B	0.35	0/3221	0.60	0/4388
1	C	0.36	0/3253	0.62	0/4429
1	D	0.34	0/3251	0.60	0/4423
1	E	0.35	0/3220	0.62	0/4387
1	F	0.36	0/3231	0.62	0/4401
All	All	0.35	0/19388	0.61	0/26403

There are no bond length outliers.

There are no bond angle outliers.

There are no chirality outliers.

There are no planarity outliers.

### 5.2 Too-close contacts [i](#)

In the following table, the Non-H and H(model) columns list the number of non-hydrogen atoms and hydrogen atoms in the chain respectively. The H(added) column lists the number of hydrogen atoms added and optimized by MolProbity. The Clashes column lists the number of clashes within the asymmetric unit, whereas Symm-Clashes lists symmetry-related clashes.

Mol	Chain	Non-H	H(model)	H(added)	Clashes	Symm-Clashes
1	A	3140	0	3033	11	0
1	B	3146	0	3037	9	0
1	C	3162	0	3078	6	0
1	D	3164	0	3057	7	0
1	E	3142	0	3036	8	0
1	F	3156	0	3058	10	0
2	A	4	0	6	2	0

*Continued on next page...*

*Continued from previous page...*

Mol	Chain	Non-H	H(model)	H(added)	Clashes	Symm-Clashes
2	B	4	0	6	0	0
2	C	8	0	12	1	0
2	D	4	0	6	1	0
2	E	4	0	6	0	0
2	F	4	0	6	1	0
3	A	52	0	36	3	0
3	B	52	0	36	2	0
3	C	52	0	36	2	0
3	D	52	0	36	2	0
3	E	52	0	36	2	0
3	F	52	0	36	1	0
4	A	10	0	14	0	0
4	B	10	0	14	0	0
4	C	10	0	14	2	0
4	D	10	0	14	0	0
4	E	30	0	42	0	0
4	F	20	0	28	0	0
5	A	14	0	20	0	0
5	B	28	0	40	2	0
5	C	14	0	20	0	0
5	D	21	0	30	0	0
5	E	14	0	20	0	0
5	F	28	0	40	0	0
6	A	1	0	0	0	0
6	B	1	0	0	1	0
6	C	1	0	0	0	0
6	D	1	0	0	0	0
6	E	1	0	0	1	0
6	F	1	0	0	0	0
7	A	2	0	0	0	0
7	B	3	0	0	0	0
7	C	2	0	0	0	0
7	D	3	0	0	0	0
7	E	2	0	0	0	0
7	F	2	0	0	0	0
8	A	444	0	0	0	0
8	B	455	0	0	1	0
8	C	466	0	0	2	0
8	D	466	0	0	0	0
8	E	482	0	0	1	0
8	F	489	0	0	1	0
All	All	22281	0	18853	56	0

The all-atom clashscore is defined as the number of clashes found per 1000 atoms (including hydrogen atoms). The all-atom clashscore for this structure is 1.

The worst 5 of 56 close contacts within the same asymmetric unit are listed below, sorted by their clash magnitude.

Atom-1	Atom-2	Interatomic distance (Å)	Clash overlap (Å)
1:F:241:GLU:HG2	1:F:270:LYS:HE3	1.77	0.67
1:F:260:ARG:HD3	8:F:1000:HOH:O	1.95	0.65
1:C:8[B]:THR:HG21	1:C:45:ASP:HA	1.81	0.62
1:D:8:THR:HG22	1:D:48:ILE:HG22	1.82	0.61
1:F:158:LEU:HD13	1:F:261:TYR:HB2	1.82	0.61

There are no symmetry-related clashes.

## 5.3 Torsion angles [i](#)

### 5.3.1 Protein backbone [i](#)

In the following table, the Percentiles column shows the percent Ramachandran outliers of the chain as a percentile score with respect to all X-ray entries followed by that with respect to entries of similar resolution.

The Analysed column shows the number of residues for which the backbone conformation was analysed, and the total number of residues.

Mol	Chain	Analysed	Favoured	Allowed	Outliers	Percentiles	
1	A	410/412 (100%)	404 (98%)	6 (2%)	0	100	100
1	B	410/412 (100%)	403 (98%)	7 (2%)	0	100	100
1	C	413/412 (100%)	407 (98%)	6 (2%)	0	100	100
1	D	412/412 (100%)	405 (98%)	7 (2%)	0	100	100
1	E	410/412 (100%)	403 (98%)	7 (2%)	0	100	100
1	F	410/412 (100%)	405 (99%)	5 (1%)	0	100	100
All	All	2465/2472 (100%)	2427 (98%)	38 (2%)	0	100	100

There are no Ramachandran outliers to report.

### 5.3.2 Protein sidechains [i](#)

In the following table, the Percentiles column shows the percent sidechain outliers of the chain as a percentile score with respect to all X-ray entries followed by that with respect to entries of similar



resolution.

The Analysed column shows the number of residues for which the sidechain conformation was analysed, and the total number of residues.

Mol	Chain	Analysed	Rotameric	Outliers	Percentiles	
1	A	321/334 (96%)	319 (99%)	2 (1%)	84	82
1	B	324/334 (97%)	322 (99%)	2 (1%)	84	82
1	C	325/334 (97%)	322 (99%)	3 (1%)	75	72
1	D	325/334 (97%)	322 (99%)	3 (1%)	75	72
1	E	321/334 (96%)	320 (100%)	1 (0%)	91	90
1	F	324/334 (97%)	323 (100%)	1 (0%)	91	90
All	All	1940/2004 (97%)	1928 (99%)	12 (1%)	84	82

5 of 12 residues with a non-rotameric sidechain are listed below:

Mol	Chain	Res	Type
1	D	76	PRO
1	D	107	ARG
1	F	303	ARG
1	D	303	ARG
1	B	303	ARG

Sometimes sidechains can be flipped to improve hydrogen bonding and reduce clashes. There are no such sidechains identified.

### 5.3.3 RNA ⓘ

There are no RNA molecules in this entry.

## 5.4 Non-standard residues in protein, DNA, RNA chains ⓘ

There are no non-standard protein/DNA/RNA residues in this entry.

## 5.5 Carbohydrates ⓘ

There are no oligosaccharides in this entry.

## 5.6 Ligand geometry

Of 59 ligands modelled in this entry, 20 are monoatomic - leaving 39 for Mogul analysis.

In the following table, the Counts columns list the number of bonds (or angles) for which Mogul statistics could be retrieved, the number of bonds (or angles) that are observed in the model and the number of bonds (or angles) that are defined in the Chemical Component Dictionary. The Link column lists molecule types, if any, to which the group is linked. The Z score for a bond length (or angle) is the number of standard deviations the observed value is removed from the expected value. A bond length (or angle) with  $|Z| > 2$  is considered an outlier worth inspection. RMSZ is the root-mean-square of all Z scores of the bond lengths (or angles).

Mol	Type	Chain	Res	Link	Bond lengths			Bond angles		
					Counts	RMSZ	# Z  > 2	Counts	RMSZ	# Z  > 2
5	PEG	C	506	-	6,6,6	0.65	0	5,5,5	0.87	0
2	EDO	D	501	-	3,3,3	0.56	0	2,2,2	1.16	0
4	PGE	E	504	-	9,9,9	0.80	0	8,8,8	1.42	1 (12%)
3	SOP	A	502	-	48,54,54	2.94	16 (33%)	62,80,80	1.42	8 (12%)
4	PGE	F	503	-	9,9,9	0.74	0	8,8,8	1.39	0
2	EDO	B	501	-	3,3,3	0.53	0	2,2,2	1.26	0
2	EDO	E	501	-	3,3,3	0.59	0	2,2,2	1.19	0
5	PEG	D	506	-	6,6,6	0.71	0	5,5,5	0.84	0
5	PEG	C	505	-	6,6,6	0.72	0	5,5,5	0.82	0
5	PEG	B	503	-	6,6,6	0.71	0	5,5,5	0.82	0
3	SOP	E	502	-	48,54,54	2.83	13 (27%)	62,80,80	1.43	8 (12%)
5	PEG	A	504	-	6,6,6	0.68	0	5,5,5	0.73	0
5	PEG	B	505	-	6,6,6	0.63	0	5,5,5	0.90	0
4	PGE	D	503	-	9,9,9	0.81	0	8,8,8	1.49	2 (25%)
5	PEG	E	503	-	6,6,6	0.57	0	5,5,5	0.96	0
5	PEG	D	504	-	6,6,6	0.67	0	5,5,5	0.88	0
5	PEG	B	507	-	6,6,6	0.68	0	5,5,5	0.90	0
5	PEG	D	505	-	6,6,6	0.71	0	5,5,5	0.72	0
2	EDO	F	501	-	3,3,3	0.65	0	2,2,2	1.12	0
5	PEG	E	506	-	6,6,6	0.52	0	5,5,5	0.94	0
5	PEG	B	506	-	6,6,6	0.76	0	5,5,5	0.68	0
4	PGE	E	505	-	9,9,9	0.77	0	8,8,8	1.36	0
5	PEG	F	505	-	6,6,6	0.75	0	5,5,5	0.80	0
3	SOP	C	502	-	48,54,54	2.84	14 (29%)	62,80,80	1.37	8 (12%)
5	PEG	F	508	-	6,6,6	0.67	0	5,5,5	0.94	0
4	PGE	C	504	-	9,9,9	0.77	0	8,8,8	1.45	2 (25%)
2	EDO	C	503	-	3,3,3	0.61	0	2,2,2	1.13	0
4	PGE	A	503	-	9,9,9	0.75	0	8,8,8	1.42	1 (12%)
5	PEG	A	505	-	6,6,6	0.64	0	5,5,5	0.91	0
3	SOP	B	502	-	48,54,54	2.96	15 (31%)	62,80,80	1.43	8 (12%)

Mol	Type	Chain	Res	Link	Bond lengths			Bond angles		
					Counts	RMSZ	# Z  > 2	Counts	RMSZ	# Z  > 2
5	PEG	F	506	-	6,6,6	0.78	0	5,5,5	0.68	0
3	SOP	D	502	-	48,54,54	2.94	15 (31%)	62,80,80	1.44	8 (12%)
2	EDO	C	501	-	3,3,3	0.60	0	2,2,2	1.19	0
4	PGE	E	507	-	9,9,9	0.75	0	8,8,8	1.35	1 (12%)
4	PGE	B	504	-	9,9,9	0.78	0	8,8,8	1.38	0
4	PGE	F	507	-	9,9,9	0.75	0	8,8,8	1.30	1 (12%)
5	PEG	F	504	-	6,6,6	0.59	0	5,5,5	1.00	0
2	EDO	A	501	-	3,3,3	0.58	0	2,2,2	1.21	0
3	SOP	F	502	-	48,54,54	2.73	14 (29%)	62,80,80	1.48	9 (14%)

In the following table, the Chirals column lists the number of chiral outliers, the number of chiral centers analysed, the number of these observed in the model and the number defined in the Chemical Component Dictionary. Similar counts are reported in the Torsion and Rings columns. '-' means no outliers of that kind were identified.

Mol	Type	Chain	Res	Link	Chirals	Torsions	Rings
5	PEG	C	506	-	-	1/4/4/4	-
2	EDO	D	501	-	-	1/1/1/1	-
4	PGE	E	504	-	-	1/7/7/7	-
3	SOP	A	502	-	-	6/48/68/68	0/3/3/3
4	PGE	F	503	-	-	5/7/7/7	-
2	EDO	B	501	-	-	1/1/1/1	-
2	EDO	E	501	-	-	1/1/1/1	-
5	PEG	D	506	-	-	2/4/4/4	-
5	PEG	C	505	-	-	2/4/4/4	-
5	PEG	B	503	-	-	3/4/4/4	-
3	SOP	E	502	-	-	6/48/68/68	0/3/3/3
5	PEG	A	504	-	-	0/4/4/4	-
5	PEG	B	505	-	-	2/4/4/4	-
4	PGE	D	503	-	-	4/7/7/7	-
5	PEG	E	503	-	-	3/4/4/4	-
5	PEG	D	504	-	-	2/4/4/4	-
5	PEG	B	507	-	-	4/4/4/4	-
5	PEG	D	505	-	-	1/4/4/4	-
2	EDO	F	501	-	-	0/1/1/1	-
5	PEG	E	506	-	-	2/4/4/4	-
5	PEG	B	506	-	-	1/4/4/4	-
4	PGE	E	505	-	-	5/7/7/7	-
5	PEG	F	505	-	-	1/4/4/4	-

Continued on next page...

*Continued from previous page...*

Mol	Type	Chain	Res	Link	Chirals	Torsions	Rings
3	SOP	C	502	-	-	6/48/68/68	0/3/3/3
5	PEG	F	508	-	-	1/4/4/4	-
4	PGE	C	504	-	-	5/7/7/7	-
2	EDO	C	503	-	-	0/1/1/1	-
4	PGE	A	503	-	-	5/7/7/7	-
5	PEG	A	505	-	-	3/4/4/4	-
3	SOP	B	502	-	-	7/48/68/68	0/3/3/3
5	PEG	F	506	-	-	2/4/4/4	-
3	SOP	D	502	-	-	6/48/68/68	0/3/3/3
2	EDO	C	501	-	-	1/1/1/1	-
4	PGE	E	507	-	-	4/7/7/7	-
4	PGE	B	504	-	-	3/7/7/7	-
4	PGE	F	507	-	-	4/7/7/7	-
5	PEG	F	504	-	-	1/4/4/4	-
2	EDO	A	501	-	-	1/1/1/1	-
3	SOP	F	502	-	-	7/48/68/68	0/3/3/3

The worst 5 of 87 bond length outliers are listed below:

Mol	Chain	Res	Type	Atoms	Z	Observed(Å)	Ideal(Å)
3	B	502	SOP	P3-O3'	13.39	1.83	1.59
3	D	502	SOP	P3-O3'	13.36	1.82	1.59
3	A	502	SOP	P3-O3'	12.95	1.82	1.59
3	E	502	SOP	P3-O3'	12.61	1.81	1.59
3	C	502	SOP	P3-O3'	12.54	1.81	1.59

The worst 5 of 57 bond angle outliers are listed below:

Mol	Chain	Res	Type	Atoms	Z	Observed(°)	Ideal(°)
3	E	502	SOP	CP1-CP2-NP1	-4.27	103.50	112.41
3	F	502	SOP	CP1-CP2-NP1	-4.27	103.51	112.41
3	D	502	SOP	CP1-S-CA1	4.24	108.71	101.72
3	A	502	SOP	CP1-CP2-NP1	-4.10	103.86	112.41
3	B	502	SOP	CP1-CP2-NP1	-3.94	104.19	112.41

There are no chirality outliers.

5 of 110 torsion outliers are listed below:

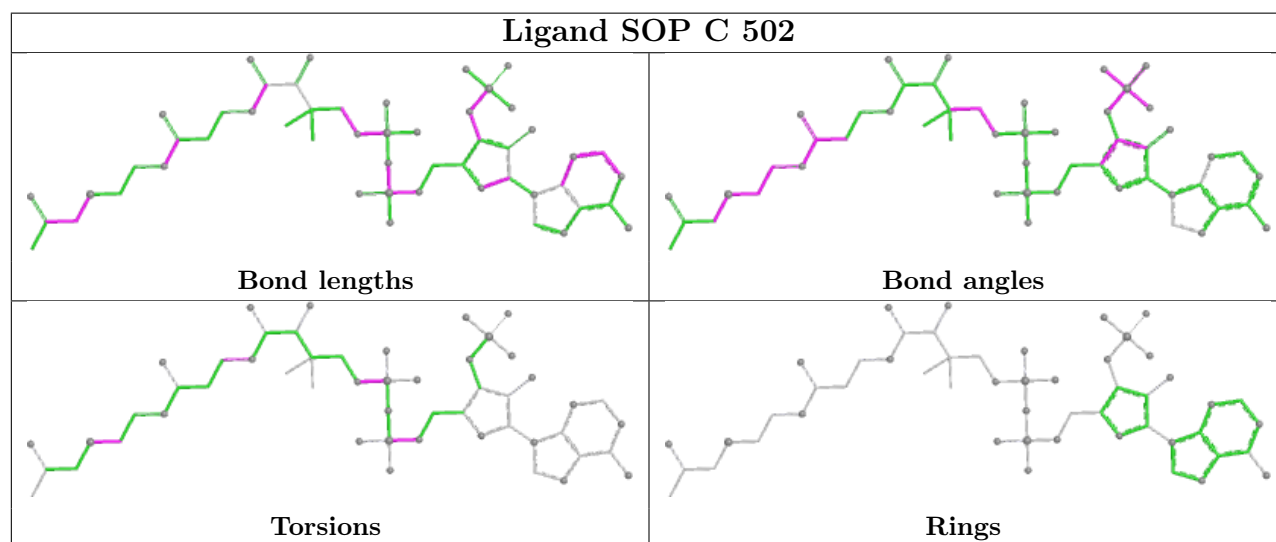
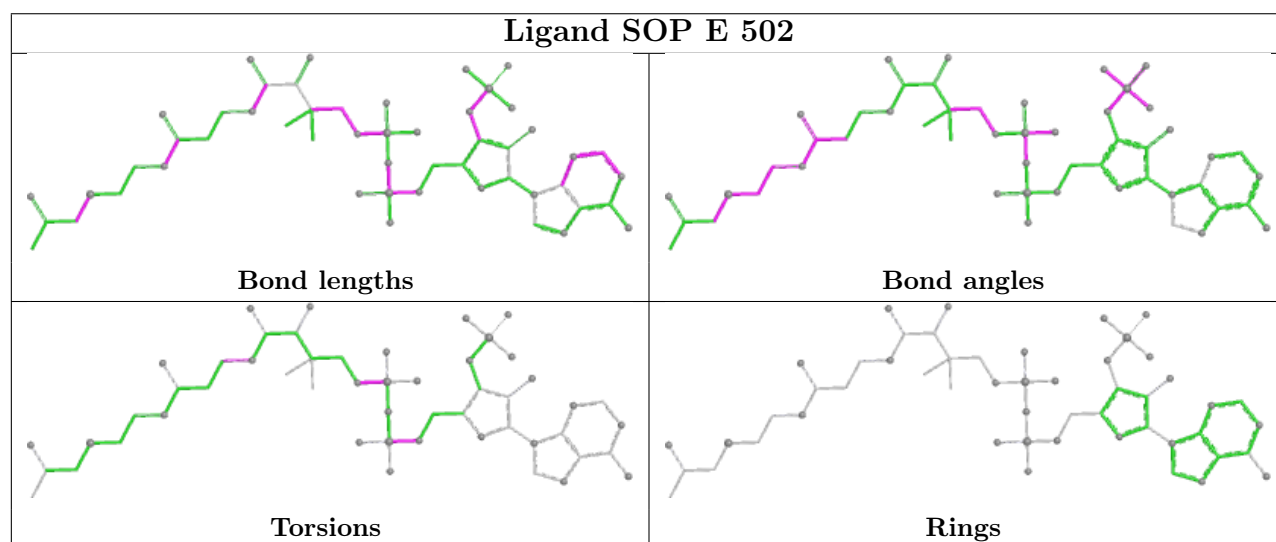
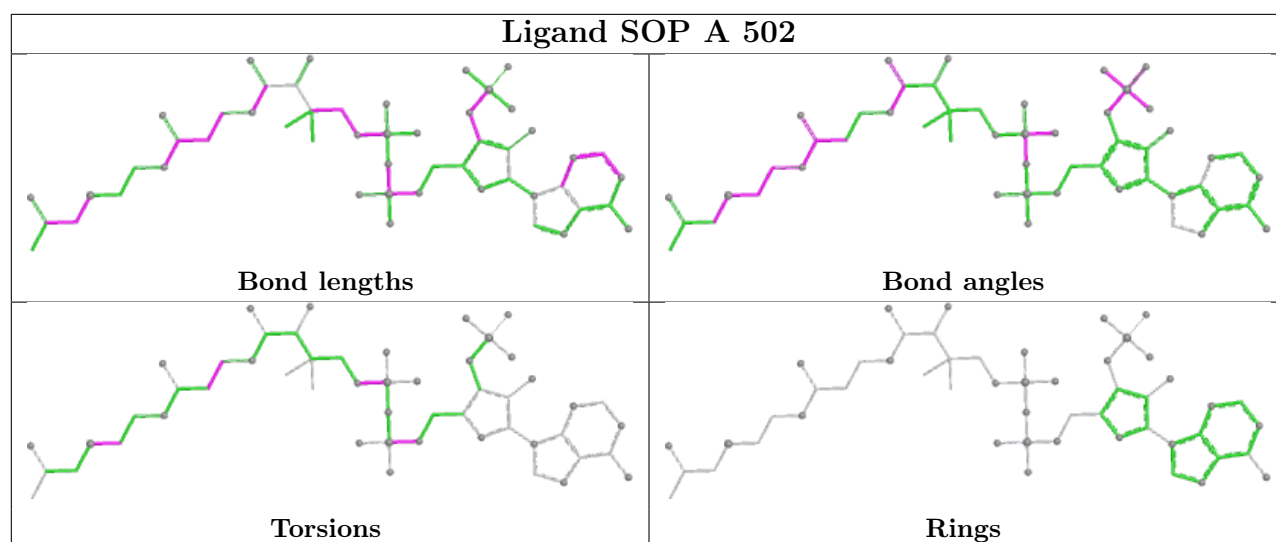
Mol	Chain	Res	Type	Atoms
3	A	502	SOP	C5'-O5'-P1-O6
3	A	502	SOP	CP9-O7-P2-O22
3	B	502	SOP	C5'-O5'-P1-O11
3	B	502	SOP	C5'-O5'-P1-O12
3	B	502	SOP	C5'-O5'-P1-O6

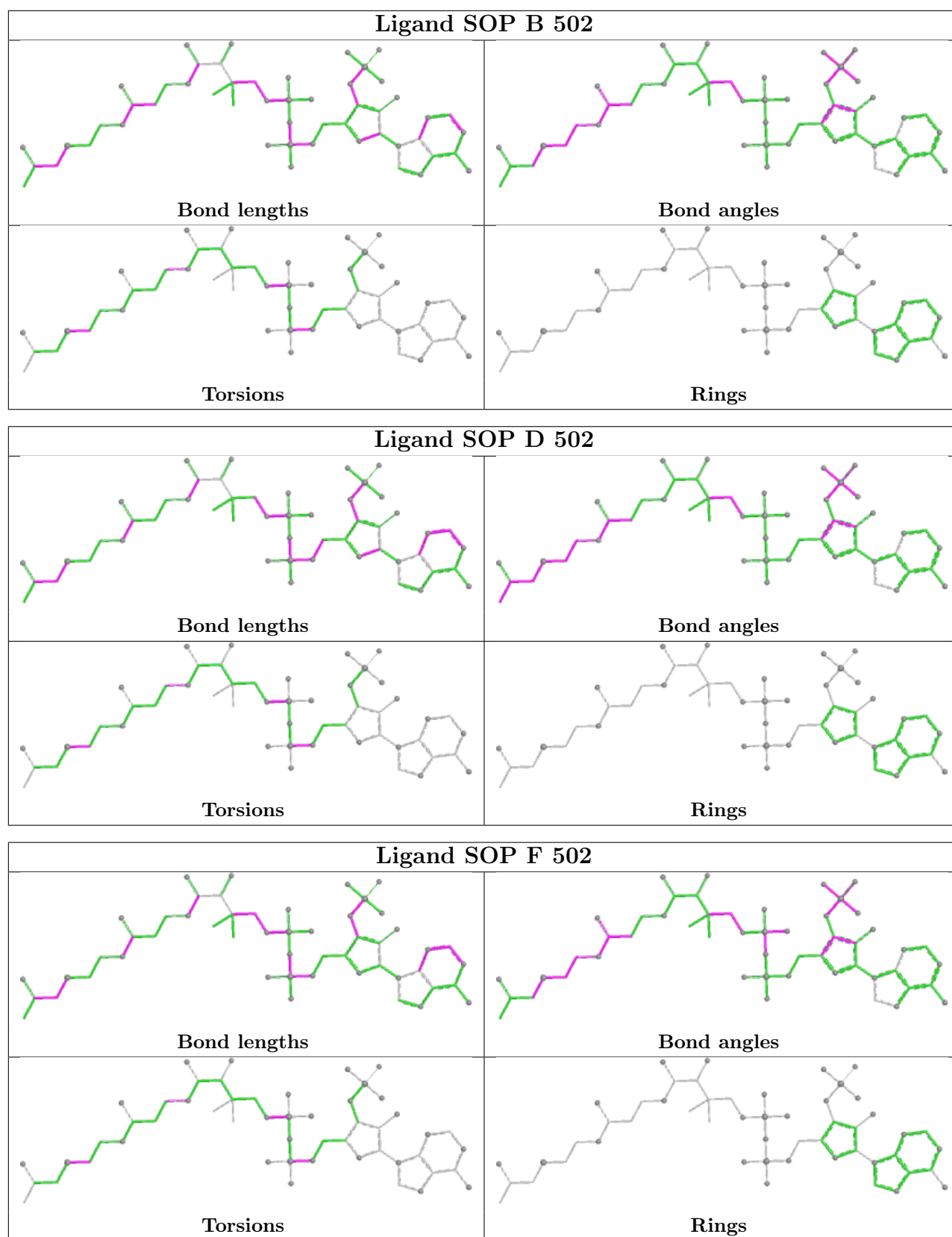
There are no ring outliers.

13 monomers are involved in 18 short contacts:

Mol	Chain	Res	Type	Clashes	Symm-Clashes
2	D	501	EDO	1	0
3	A	502	SOP	3	0
3	E	502	SOP	2	0
5	B	505	PEG	1	0
2	F	501	EDO	1	0
5	B	506	PEG	1	0
3	C	502	SOP	2	0
4	C	504	PGE	2	0
3	B	502	SOP	2	0
3	D	502	SOP	2	0
2	C	501	EDO	1	0
2	A	501	EDO	2	0
3	F	502	SOP	1	0

The following is a two-dimensional graphical depiction of Mogul quality analysis of bond lengths, bond angles, torsion angles, and ring geometry for all instances of the Ligand of Interest. In addition, ligands with molecular weight > 250 and outliers as shown on the validation Tables will also be included. For torsion angles, if less than 5% of the Mogul distribution of torsion angles is within 10 degrees of the torsion angle in question, then that torsion angle is considered an outlier. Any bond that is central to one or more torsion angles identified as an outlier by Mogul will be highlighted in the graph. For rings, the root-mean-square deviation (RMSD) between the ring in question and similar rings identified by Mogul is calculated over all ring torsion angles. If the average RMSD is greater than 60 degrees and the minimal RMSD between the ring in question and any Mogul-identified rings is also greater than 60 degrees, then that ring is considered an outlier. The outliers are highlighted in purple. The color gray indicates Mogul did not find sufficient equivalents in the CSD to analyse the geometry.





## 5.7 Other polymers [i](#)

There are no such residues in this entry.

## 5.8 Polymer linkage issues [i](#)

There are no chain breaks in this entry.



## 6 Fit of model and data [i](#)

### 6.1 Protein, DNA and RNA chains [i](#)

In the following table, the column labelled ‘#RSRZ> 2’ contains the number (and percentage) of RSRZ outliers, followed by percent RSRZ outliers for the chain as percentile scores relative to all X-ray entries and entries of similar resolution. The OWAB column contains the minimum, median, 95<sup>th</sup> percentile and maximum values of the occupancy-weighted average B-factor per residue. The column labelled ‘Q< 0.9’ lists the number of (and percentage) of residues with an average occupancy less than 0.9.

Mol	Chain	Analysed	<RSRZ>	#RSRZ>2	OWAB(Å <sup>2</sup> )	Q<0.9
1	A	409/412 (99%)	-0.27	1 (0%) 92 91	10, 19, 34, 45	4 (0%)
1	B	409/412 (99%)	-0.41	1 (0%) 92 91	8, 18, 30, 40	3 (0%)
1	C	408/412 (99%)	-0.46	2 (0%) 87 87	9, 15, 29, 40	7 (1%)
1	D	408/412 (99%)	-0.47	2 (0%) 87 87	9, 17, 29, 43	7 (1%)
1	E	409/412 (99%)	-0.51	0 100 100	9, 15, 29, 41	4 (0%)
1	F	409/412 (99%)	-0.51	1 (0%) 92 91	7, 14, 28, 43	4 (0%)
All	All	2452/2472 (99%)	-0.44	7 (0%) 90 90	7, 16, 30, 45	29 (1%)

The worst 5 of 7 RSRZ outliers are listed below:

Mol	Chain	Res	Type	RSRZ
1	A	270[A]	LYS	2.7
1	F	92[A]	ARG	2.7
1	D	274	HIS	2.4
1	D	388	ARG	2.3
1	B	274	HIS	2.1

### 6.2 Non-standard residues in protein, DNA, RNA chains [i](#)

There are no non-standard protein/DNA/RNA residues in this entry.

### 6.3 Carbohydrates [i](#)

There are no monosaccharides in this entry.

## 6.4 Ligands

In the following table, the Atoms column lists the number of modelled atoms in the group and the number defined in the chemical component dictionary. The B-factors column lists the minimum, median, 95<sup>th</sup> percentile and maximum values of B factors of atoms in the group. The column labelled 'Q< 0.9' lists the number of atoms with occupancy less than 0.9.

Mol	Type	Chain	Res	Atoms	RSCC	RSR	B-factors(Å <sup>2</sup> )	Q<0.9
5	PEG	D	506	7/7	0.70	0.17	36,36,36,36	0
2	EDO	C	501	4/4	0.75	0.15	23,30,36,40	0
2	EDO	F	501	4/4	0.76	0.17	22,31,33,37	0
5	PEG	B	503	7/7	0.77	0.14	42,43,48,49	0
2	EDO	D	501	4/4	0.77	0.15	24,29,39,42	0
5	PEG	F	508	7/7	0.77	0.14	32,38,46,46	0
2	EDO	A	501	4/4	0.79	0.14	22,28,34,36	0
4	PGE	F	503	10/10	0.80	0.14	24,30,43,46	0
2	EDO	E	501	4/4	0.81	0.14	19,32,37,38	0
4	PGE	C	504	10/10	0.82	0.14	24,32,41,46	0
2	EDO	B	501	4/4	0.82	0.17	25,28,32,34	0
4	PGE	F	507	10/10	0.82	0.14	36,36,36,36	0
5	PEG	F	504	7/7	0.83	0.13	39,39,39,39	0
4	PGE	E	507	10/10	0.83	0.14	39,39,39,39	0
5	PEG	B	505	7/7	0.84	0.11	39,39,39,39	0
5	PEG	E	503	7/7	0.84	0.13	36,37,42,47	0
4	PGE	D	503	10/10	0.85	0.13	24,31,42,42	0
2	EDO	C	503	4/4	0.85	0.12	37,37,38,43	0
5	PEG	B	507	7/7	0.85	0.13	38,38,38,38	0
5	PEG	C	506	7/7	0.85	0.12	36,36,36,36	0
7	NA	E	510	1/1	0.85	0.24	43,43,43,43	0
5	PEG	A	505	7/7	0.86	0.13	40,40,40,40	0
4	PGE	E	504	10/10	0.87	0.11	23,33,41,47	0
5	PEG	A	504	7/7	0.87	0.12	20,20,20,20	7
4	PGE	E	505	10/10	0.87	0.11	36,36,36,36	0
4	PGE	B	504	10/10	0.88	0.11	25,34,37,44	0
5	PEG	E	506	7/7	0.88	0.12	19,19,19,19	7
4	PGE	A	503	10/10	0.88	0.11	28,35,44,46	0
5	PEG	F	505	7/7	0.88	0.10	35,35,35,35	0
5	PEG	F	506	7/7	0.88	0.12	20,20,20,20	7
5	PEG	D	504	7/7	0.88	0.10	33,33,33,33	0
5	PEG	B	506	7/7	0.88	0.12	20,20,20,20	7
7	NA	F	511	1/1	0.88	0.24	34,34,34,34	0
7	NA	B	511	1/1	0.89	0.12	36,36,36,36	0
5	PEG	C	505	7/7	0.91	0.10	20,20,20,20	7
7	NA	A	508	1/1	0.92	0.14	36,36,36,36	0
7	NA	E	509	1/1	0.92	0.08	31,31,31,31	0

*Continued on next page...*

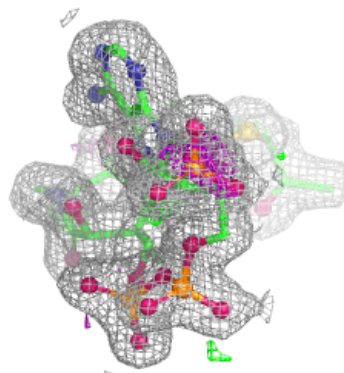
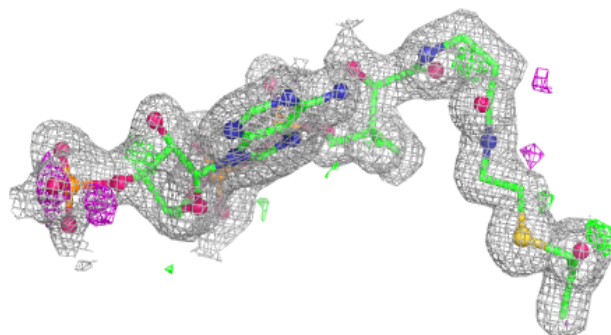
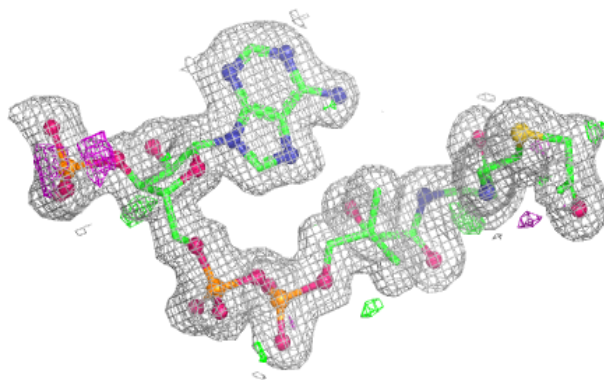
*Continued from previous page...*

Mol	Type	Chain	Res	Atoms	RSCC	RSR	B-factors( $\text{\AA}^2$ )	Q<0.9
7	NA	D	510	1/1	0.93	0.06	32,32,32,32	0
5	PEG	D	505	7/7	0.93	0.12	26,26,26,26	0
7	NA	A	507	1/1	0.95	0.12	32,32,32,32	0
7	NA	C	509	1/1	0.95	0.05	28,28,28,28	0
7	NA	B	510	1/1	0.95	0.07	29,29,29,29	0
3	SOP	B	502	52/52	0.96	0.07	10,15,33,39	0
3	SOP	D	502	52/52	0.96	0.07	9,15,39,44	0
3	SOP	A	502	52/52	0.96	0.07	12,17,38,41	0
7	NA	F	510	1/1	0.96	0.09	26,26,26,26	0
7	NA	D	508	1/1	0.96	0.10	20,20,20,20	0
3	SOP	E	502	52/52	0.97	0.06	8,13,28,31	0
7	NA	C	508	1/1	0.97	0.14	25,25,25,25	0
3	SOP	C	502	52/52	0.97	0.06	8,14,34,43	2
7	NA	D	509	1/1	0.98	0.11	25,25,25,25	0
3	SOP	F	502	52/52	0.98	0.05	7,12,27,30	0
7	NA	B	509	1/1	0.99	0.04	19,19,19,19	0
6	CL	D	507	1/1	0.99	0.06	23,23,23,23	0
6	CL	A	506	1/1	0.99	0.03	24,24,24,24	0
6	CL	B	508	1/1	0.99	0.03	23,23,23,23	0
6	CL	F	509	1/1	1.00	0.07	20,20,20,20	0
6	CL	C	507	1/1	1.00	0.05	22,22,22,22	0
6	CL	E	508	1/1	1.00	0.04	20,20,20,20	0

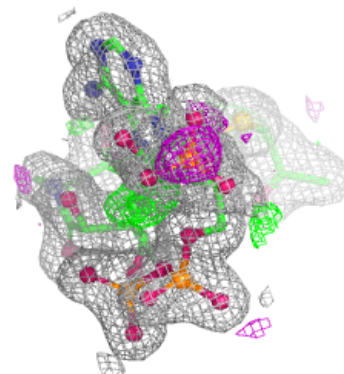
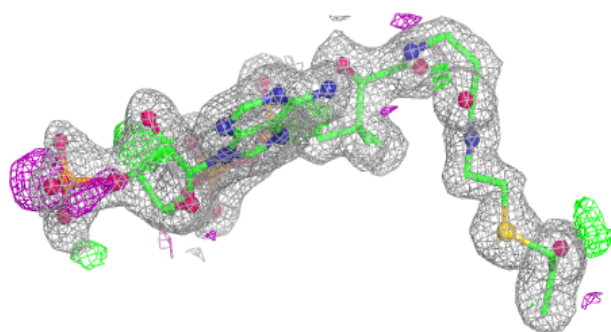
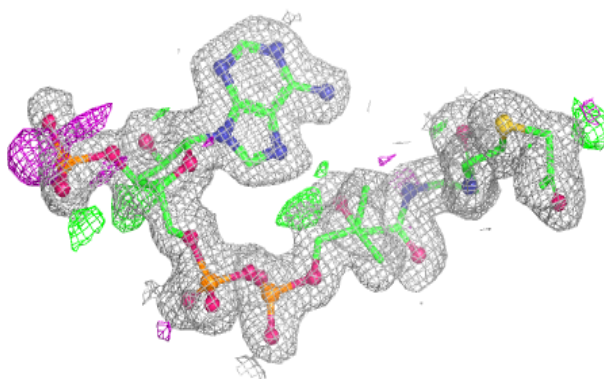
The following is a graphical depiction of the model fit to experimental electron density of all instances of the Ligand of Interest. In addition, ligands with molecular weight > 250 and outliers as shown on the geometry validation Tables will also be included. Each fit is shown from different orientation to approximate a three-dimensional view.

**Electron density around SOP B 502:**

$2mF_o-DF_c$  (at 0.7 rmsd) in gray  
 $mF_o-DF_c$  (at 3 rmsd) in purple (negative)  
and green (positive)

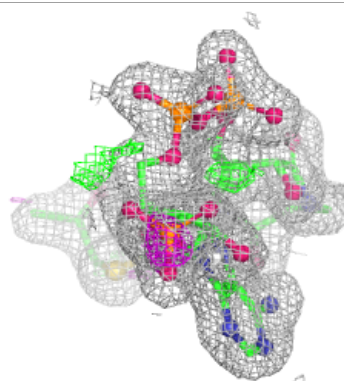
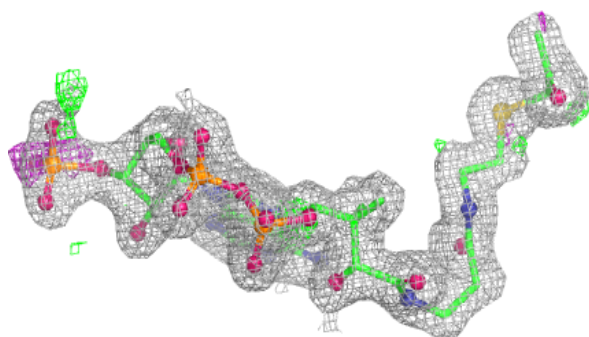
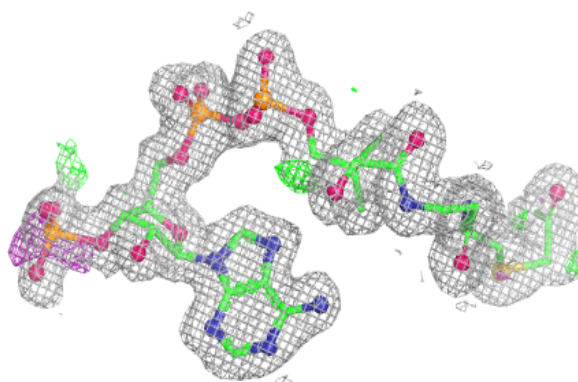
**Electron density around SOP D 502:**

$2mF_o-DF_c$  (at 0.7 rmsd) in gray  
 $mF_o-DF_c$  (at 3 rmsd) in purple (negative)  
and green (positive)

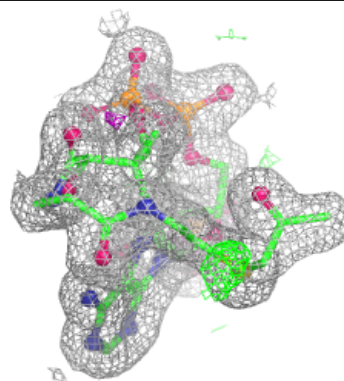
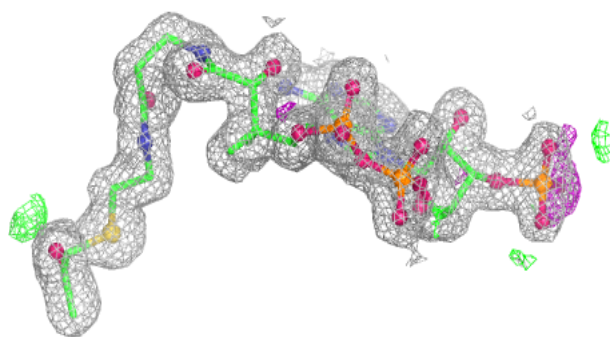
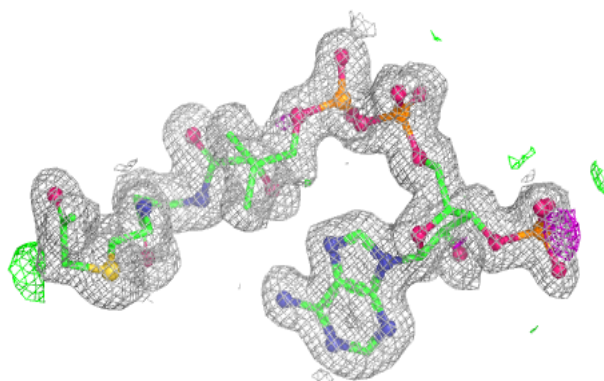


**Electron density around SOP A 502:**

$2mF_o-DF_c$  (at 0.7 rmsd) in gray  
 $mF_o-DF_c$  (at 3 rmsd) in purple (negative)  
and green (positive)

**Electron density around SOP E 502:**

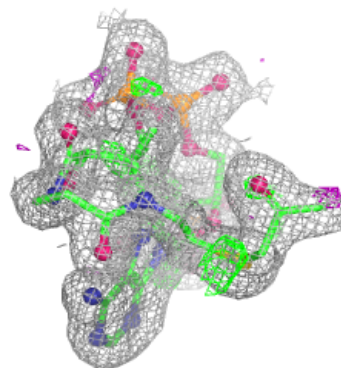
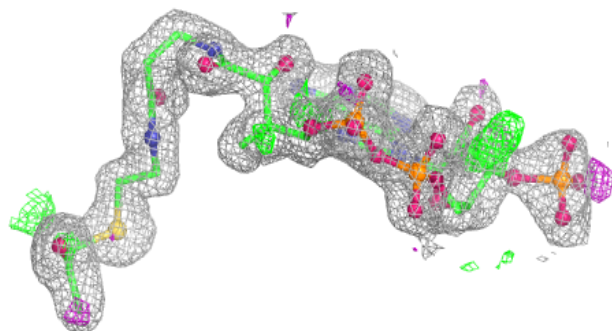
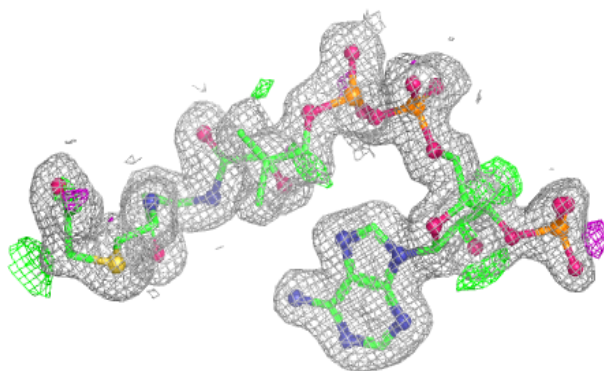
$2mF_o-DF_c$  (at 0.7 rmsd) in gray  
 $mF_o-DF_c$  (at 3 rmsd) in purple (negative)  
and green (positive)



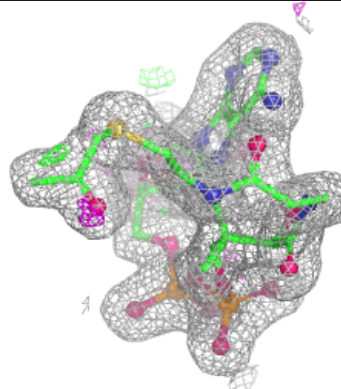
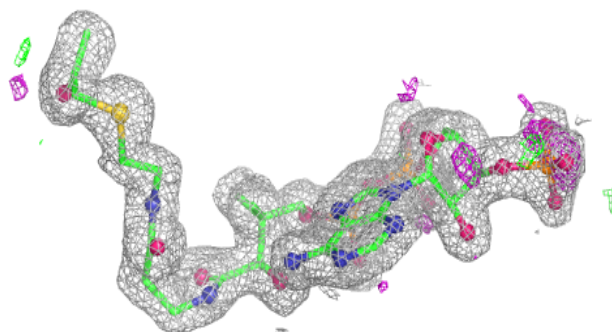
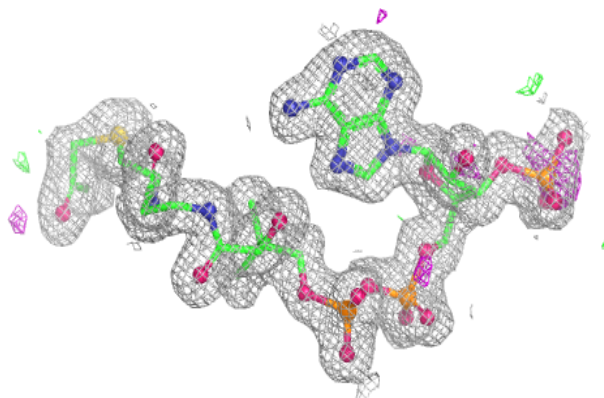


**Electron density around SOP C 502:**

$2mF_o-DF_c$  (at 0.7 rmsd) in gray  
 $mF_o-DF_c$  (at 3 rmsd) in purple (negative)  
and green (positive)

**Electron density around SOP F 502:**

$2mF_o-DF_c$  (at 0.7 rmsd) in gray  
 $mF_o-DF_c$  (at 3 rmsd) in purple (negative)  
and green (positive)



## 6.5 Other polymers [i](#)

There are no such residues in this entry.