



Full wwPDB X-ray Structure Validation Report ⓘ

Nov 13, 2024 – 06:06 PM EST

PDB ID : 4NTY
Title : Cesium sites in the crystal structure of acid-sensing ion channel in complex with snake toxin
Authors : Bacongus, I.; Bohlen, C.J.; Goehring, A.; Julius, D.; Gouaux, E.
Deposited on : 2013-12-02
Resolution : 2.65 Å(reported)

This is a Full wwPDB X-ray Structure Validation Report for a publicly released PDB entry.

We welcome your comments at validation@mail.wwpdb.org

A user guide is available at

<https://www.wwpdb.org/validation/2017/XrayValidationReportHelp>

with specific help available everywhere you see the ⓘ symbol.

The types of validation reports are described at

<http://www.wwpdb.org/validation/2017/FAQs#types>.

The following versions of software and data (see [references ⓘ](#)) were used in the production of this report:

MolProbity	:	4.02b-467
Mogul	:	2022.3.0, CSD as543be (2022)
Xtriage (Phenix)	:	1.20.1
EDS	:	3.0
buster-report	:	1.1.7 (2018)
Percentile statistics	:	20231227.v01 (using entries in the PDB archive December 27th 2023)
CCP4	:	9.0.003 (Gargrove)
Density-Fitness	:	1.0.11
Ideal geometry (proteins)	:	Engh & Huber (2001)
Ideal geometry (DNA, RNA)	:	Parkinson et al. (1996)
Validation Pipeline (wwPDB-VP)	:	2.39

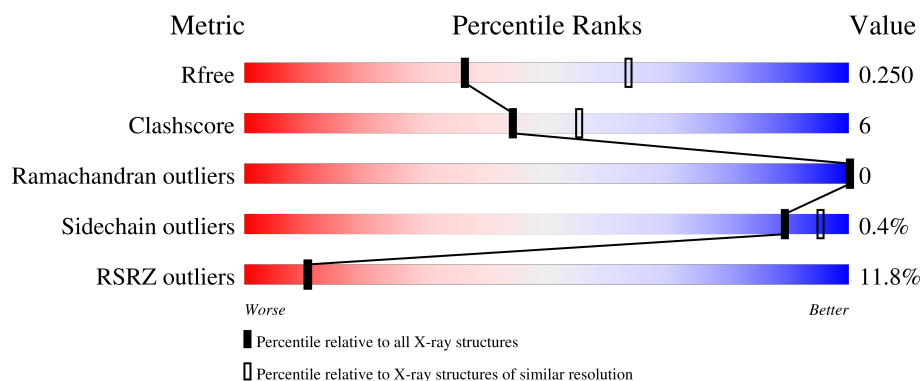
1 Overall quality at a glance

The following experimental techniques were used to determine the structure:

X-RAY DIFFRACTION

The reported resolution of this entry is 2.65 Å.

Percentile scores (ranging between 0-100) for global validation metrics of the entry are shown in the following graphic. The table shows the number of entries on which the scores are based.



Metric	Whole archive (#Entries)	Similar resolution (#Entries, resolution range(Å))
R_{free}	164625	1003 (2.66-2.66)
Clashscore	180529	1063 (2.66-2.66)
Ramachandran outliers	177936	1052 (2.66-2.66)
Sidechain outliers	177891	1052 (2.66-2.66)
RSRZ outliers	164620	1003 (2.66-2.66)

The table below summarises the geometric issues observed across the polymeric chains and their fit to the electron density. The red, orange, yellow and green segments of the lower bar indicate the fraction of residues that contain outliers for ≥ 3 , 2, 1 and 0 types of geometric quality criteria respectively. A grey segment represents the fraction of residues that are not modelled. The numeric value for each fraction is indicated below the corresponding segment, with a dot representing fractions $\leq 5\%$. The upper red bar (where present) indicates the fraction of residues that have poor fit to the electron density. The numeric value is given above the bar.

Mol	Chain	Length	Quality of chain
1	A	450	
2	B	60	
3	C	119	

The following table lists non-polymeric compounds, carbohydrate monomers and non-standard residues in protein, DNA, RNA chains that are outliers for geometric or electron-density-fit criteria:

Mol	Type	Chain	Res	Chirality	Geometry	Clashes	Electron density
5	CL	A	512	-	-	X	-

In the tables below, the ZeroOcc column contains the number of atoms modelled with zero occupancy, the AltConf column contains the number of residues with at least one atom in alternate conformation and the Trace column contains the number of residues modelled with at most 2 atoms.

- Molecule 1 is a protein called Acid-sensing ion channel 1.

Mol	Chain	Residues	Atoms					ZeroOcc	AltConf	Trace
1	A	406	Total	C	N	O	S	0	0	0
			3219	2063	525	604	27			

- Molecule 2 is a protein called Neurotoxin MitTx-alpha.

Mol	Chain	Residues	Atoms					ZeroOcc	AltConf	Trace
2	B	60	Total	C	N	O	S	0	0	0
			493	314	83	89	7			

- Molecule 3 is a protein called Basic phospholipase A2 homolog Tx-beta.

Mol	Chain	Residues	Atoms					ZeroOcc	AltConf	Trace
3	C	118	Total	C	N	O	S	0	0	0
			918	563	165	174	16			

- Molecule 4 is CESIUM ION (three-letter code: CS) (formula: Cs).

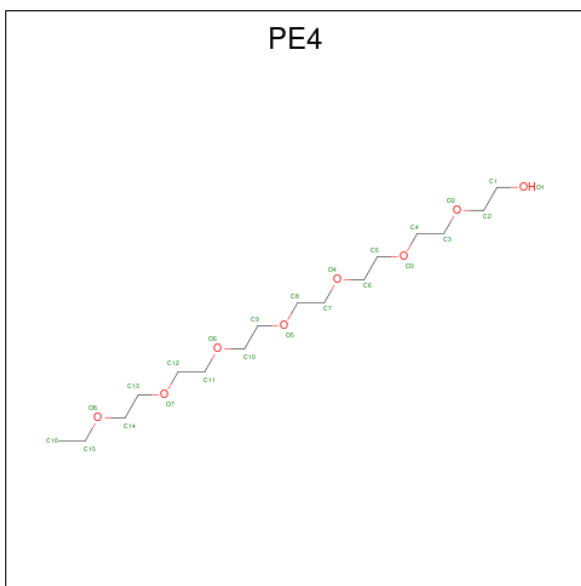
Mol	Chain	Residues	Atoms	ZeroOcc	AltConf
4	A	11	Total Cs 11 11	0	0
4	B	2	Total Cs 2 2	0	0
4	C	2	Total Cs 2 2	0	0

- Molecule 5 is CHLORIDE ION (three-letter code: CL) (formula: Cl).

Mol	Chain	Residues	Atoms	ZeroOcc	AltConf
5	A	1	Total Cl 1 1	0	0

- Molecule 6 is 2-{2-[2-(2-{2-[2-(2-ETHOXY-ETHOXY)-ETHOXY]-ETHOXY}-ETHOXY)-

ETHOXY]-ETHOXY}-ETHANOL (three-letter code: PE4) (formula: C₁₆H₃₄O₈).



Mol	Chain	Residues	Atoms			ZeroOcc	AltConf
6	A	1	Total	C	O	0	0
			15	10	5		

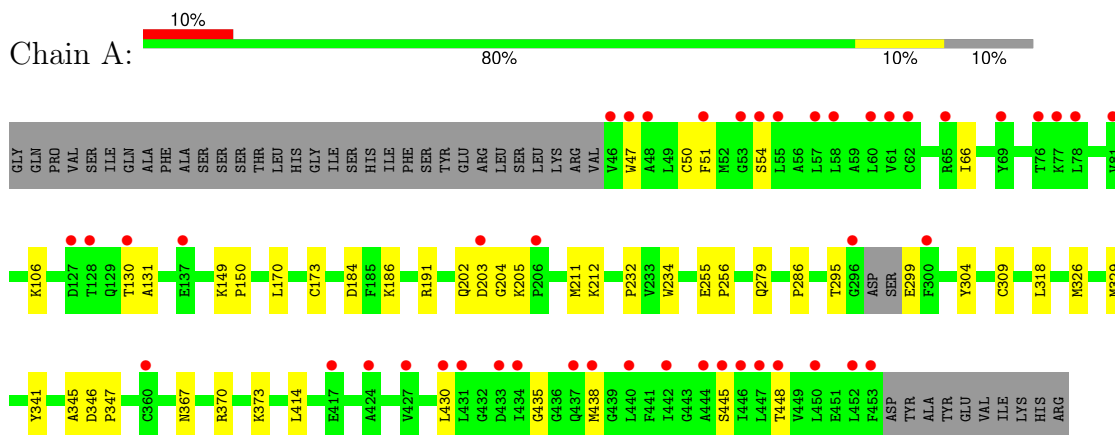
- Molecule 7 is water.

Mol	Chain	Residues	Atoms	ZeroOcc	AltConf
7	A	70	Total O 70 70	0	0
7	B	6	Total O 6 6	0	0
7	C	12	Total O 12 12	0	0

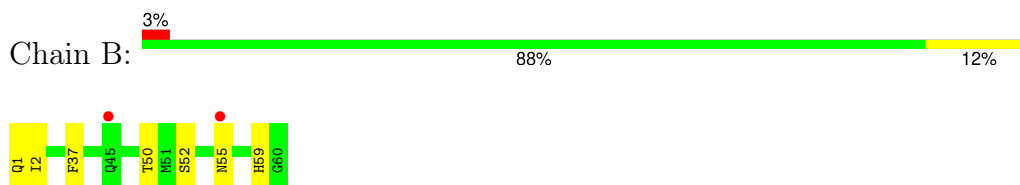
3 Residue-property plots [i](#)

These plots are drawn for all protein, RNA, DNA and oligosaccharide chains in the entry. The first graphic for a chain summarises the proportions of the various outlier classes displayed in the second graphic. The second graphic shows the sequence view annotated by issues in geometry and electron density. Residues are color-coded according to the number of geometric quality criteria for which they contain at least one outlier: green = 0, yellow = 1, orange = 2 and red = 3 or more. A red dot above a residue indicates a poor fit to the electron density ($RSRZ > 2$). Stretches of 2 or more consecutive residues without any outlier are shown as a green connector. Residues present in the sample, but not in the model, are shown in grey.

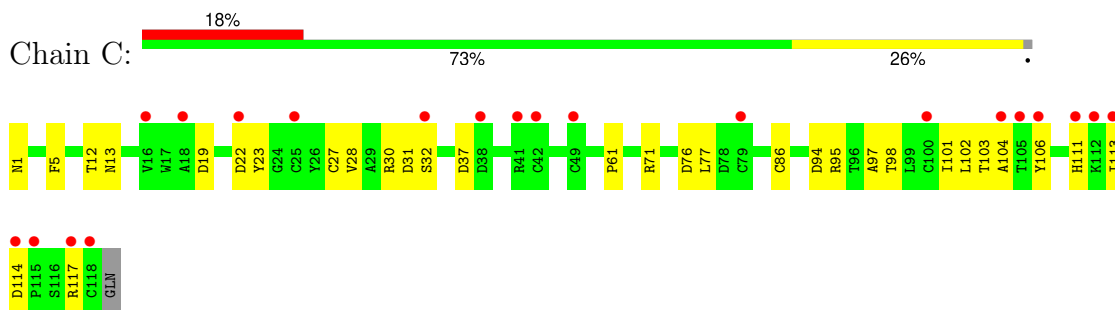
- Molecule 1: Acid-sensing ion channel 1



- Molecule 2: Neurotoxin MitTx-alpha



- Molecule 3: Basic phospholipase A2 homolog Tx-beta



4 Data and refinement statistics

Property	Value	Source
Space group	H 3	Depositor
Cell constants a, b, c, α , β , γ	151.53Å 151.53Å 123.83Å 90.00° 90.00° 120.00°	Depositor
Resolution (Å)	46.04 – 2.65 46.04 – 2.65	Depositor EDS
% Data completeness (in resolution range)	99.7 (46.04-2.65) 95.0 (46.04-2.65)	Depositor EDS
R_{merge}	(Not available)	Depositor
R_{sym}	(Not available)	Depositor
$\langle I/\sigma(I) \rangle$ ¹	1.62 (at 2.65Å)	Xtriage
Refinement program	PHENIX (phenix.refine: dev_1402)	Depositor
R, R_{free}	0.216 , 0.255 0.217 , 0.250	Depositor DCC
R_{free} test set	1533 reflections (4.94%)	wwPDB-VP
Wilson B-factor (Å ²)	48.2	Xtriage
Anisotropy	0.278	Xtriage
Bulk solvent k_{sol} (e/Å ³), B_{sol} (Å ²)	0.29 , 30.0	EDS
L-test for twinning ²	$\langle L \rangle = 0.49$, $\langle L^2 \rangle = 0.32$	Xtriage
Estimated twinning fraction	0.029 for h,-h-k,-l	Xtriage
F_o, F_c correlation	0.91	EDS
Total number of atoms	4749	wwPDB-VP
Average B, all atoms (Å ²)	49.0	wwPDB-VP

Xtriage's analysis on translational NCS is as follows: *The largest off-origin peak in the Patterson function is 3.41% of the height of the origin peak. No significant pseudotranslation is detected.*

¹Intensities estimated from amplitudes.

²Theoretical values of $\langle |L| \rangle$, $\langle L^2 \rangle$ for acentric reflections are 0.5, 0.333 respectively for untwinned datasets, and 0.375, 0.2 for perfectly twinned datasets.

5 Model quality

5.1 Standard geometry

Bond lengths and bond angles in the following residue types are not validated in this section: CS, PE4, CL, PCA

The Z score for a bond length (or angle) is the number of standard deviations the observed value is removed from the expected value. A bond length (or angle) with $|Z| > 5$ is considered an outlier worth inspection. RMSZ is the root-mean-square of all Z scores of the bond lengths (or angles).

Mol	Chain	Bond lengths		Bond angles	
		RMSZ	# Z >5	RMSZ	# Z >5
1	A	0.46	0/3295	0.53	0/4463
2	B	0.37	0/503	0.45	0/681
3	C	0.34	0/935	0.51	0/1268
All	All	0.43	0/4733	0.51	0/6412

There are no bond length outliers.

There are no bond angle outliers.

There are no chirality outliers.

There are no planarity outliers.

5.2 Too-close contacts

In the following table, the Non-H and H(model) columns list the number of non-hydrogen atoms and hydrogen atoms in the chain respectively. The H(added) column lists the number of hydrogen atoms added and optimized by MolProbity. The Clashes column lists the number of clashes within the asymmetric unit, whereas Symm-Clashes lists symmetry-related clashes.

Mol	Chain	Non-H	H(model)	H(added)	Clashes	Symm-Clashes
1	A	3219	0	3088	33	0
2	B	493	0	428	4	0
3	C	918	0	830	18	0
4	A	11	0	0	0	0
4	B	2	0	0	0	0
4	C	2	0	0	0	0
5	A	1	0	0	1	1
6	A	15	0	19	1	0
7	A	70	0	0	4	1
7	B	6	0	0	0	0

Continued on next page...

Continued from previous page...

Mol	Chain	Non-H	H(model)	H(added)	Clashes	Symm-Clashes
7	C	12	0	0	1	0
All	All	4749	0	4365	53	1

The all-atom clashscore is defined as the number of clashes found per 1000 atoms (including hydrogen atoms). The all-atom clashscore for this structure is 6.

All (53) close contacts within the same asymmetric unit are listed below, sorted by their clash magnitude.

Atom-1	Atom-2	Interatomic distance (Å)	Clash overlap (Å)
1:A:212:LYS:NZ	5:A:512:CL:CL	2.52	0.79
3:C:77:LEU:HD22	3:C:95:ARG:HG3	1.74	0.70
1:A:184:ASP:O	7:A:612:HOH:O	2.09	0.70
1:A:203:ASP:HB2	1:A:205:LYS:HG3	1.73	0.69
3:C:22:ASP:OD1	3:C:30:ARG:NH1	2.29	0.66
1:A:341:TYR:HA	1:A:345:ALA:HB3	1.78	0.65
1:A:445:SER:HB3	1:A:448:THR:HG23	1.80	0.64
1:A:367:ASN:ND2	7:A:655:HOH:O	2.31	0.63
1:A:47:TRP:NE1	1:A:51:PHE:HB2	2.14	0.62
1:A:191:ARG:HG2	6:A:513:PE4:H42	1.80	0.62
1:A:326:MET:H	1:A:329:MET:HE2	1.65	0.61
1:A:170:LEU:HD11	1:A:173:CYS:HB2	1.84	0.59
1:A:279:GLN:OE1	7:A:629:HOH:O	2.17	0.58
3:C:71:ARG:NE	7:C:309:HOH:O	2.36	0.57
3:C:23:TYR:OH	3:C:37:ASP:OD1	2.24	0.56
3:C:71:ARG:HB2	3:C:76:ASP:HB3	1.86	0.56
3:C:113:ILE:HD12	3:C:117:ARG:HB3	1.89	0.55
1:A:435:GLY:HA2	1:A:438:MET:HE2	1.89	0.53
1:A:47:TRP:O	1:A:51:PHE:N	2.42	0.52
2:B:2:ILE:HD12	3:C:13:ASN:HA	1.92	0.51
3:C:103:THR:OG1	3:C:104:ALA:N	2.44	0.51
1:A:279:GLN:OE1	1:A:370:ARG:NH1	2.44	0.51
1:A:130:THR:O	1:A:130:THR:OG1	2.21	0.51
1:A:295:THR:HG1	1:A:299:GLU:N	2.10	0.50
1:A:373:LYS:NZ	7:A:610:HOH:O	2.31	0.50
3:C:19:ASP:HB3	3:C:106:TYR:CZ	2.46	0.49
1:A:66:ILE:HD12	1:A:430:LEU:HD11	1.93	0.49
1:A:131:ALA:HB2	1:A:234:TRP:HZ2	1.77	0.49
2:B:55:ASN:O	2:B:59:HIS:HB2	2.14	0.48
1:A:149:LYS:HA	1:A:150:PRO:HD3	1.77	0.47
3:C:27:CYS:HA	3:C:28:VAL:HA	1.57	0.47
1:A:318:LEU:HB2	1:A:329:MET:HE1	1.99	0.45

Continued on next page...

Continued from previous page...

Atom-1	Atom-2	Interatomic distance (Å)	Clash overlap (Å)
3:C:97:ALA:O	3:C:101:ILE:HG13	2.17	0.45
1:A:286:PRO:HG3	2:B:37:PHE:CE1	2.52	0.45
3:C:114:ASP:O	3:C:117:ARG:HB2	2.18	0.44
3:C:12:THR:HB	3:C:102:LEU:HD11	2.00	0.44
1:A:186:LYS:HE2	1:A:202:GLN:OE1	2.17	0.44
2:B:50:THR:HG22	2:B:52:SER:H	1.82	0.43
3:C:5:PHE:HB2	3:C:94:ASP:OD2	2.17	0.43
3:C:31:ASP:OD1	3:C:32:SER:N	2.52	0.43
1:A:106:LYS:HB3	1:A:106:LYS:NZ	2.33	0.43
1:A:131:ALA:HB2	1:A:234:TRP:CZ2	2.53	0.43
1:A:304:TYR:CE1	1:A:309:CYS:HB2	2.54	0.43
1:A:50:CYS:O	1:A:54:SER:HB3	2.20	0.42
1:A:211:MET:HA	1:A:414:LEU:HD21	2.02	0.42
3:C:23:TYR:HA	3:C:111:HIS:HA	2.02	0.42
1:A:346:ASP:HB2	1:A:347:PRO:HD3	2.02	0.41
3:C:95:ARG:O	3:C:98:THR:HG22	2.21	0.41
1:A:202:GLN:C	1:A:204:GLY:H	2.23	0.41
1:A:47:TRP:O	1:A:50:CYS:N	2.44	0.40
3:C:1:ASN:HA	3:C:61:PRO:O	2.21	0.40
1:A:255:GLU:HA	1:A:256:PRO:HD3	1.96	0.40
1:A:318:LEU:HD23	1:A:318:LEU:HA	1.85	0.40

All (1) symmetry-related close contacts are listed below. The label for Atom-2 includes the symmetry operator and encoded unit-cell translations to be applied.

Atom-1	Atom-2	Interatomic distance (Å)	Clash overlap (Å)
5:A:512:CL:CL	7:A:604:HOH:O[3_555]	2.10	0.10

5.3 Torsion angles [i](#)

5.3.1 Protein backbone [i](#)

In the following table, the Percentiles column shows the percent Ramachandran outliers of the chain as a percentile score with respect to all X-ray entries followed by that with respect to entries of similar resolution.

The Analysed column shows the number of residues for which the backbone conformation was analysed, and the total number of residues.

Mol	Chain	Analysed	Favoured	Allowed	Outliers	Percentiles	
1	A	402/450 (89%)	388 (96%)	14 (4%)	0	100	100
2	B	58/60 (97%)	54 (93%)	4 (7%)	0	100	100
3	C	116/119 (98%)	106 (91%)	10 (9%)	0	100	100
All	All	576/629 (92%)	548 (95%)	28 (5%)	0	100	100

There are no Ramachandran outliers to report.

5.3.2 Protein sidechains ⓘ

In the following table, the Percentiles column shows the percent sidechain outliers of the chain as a percentile score with respect to all X-ray entries followed by that with respect to entries of similar resolution.

The Analysed column shows the number of residues for which the sidechain conformation was analysed, and the total number of residues.

Mol	Chain	Analysed	Rotameric	Outliers	Percentiles	
1	A	343/392 (88%)	342 (100%)	1 (0%)	91	96
2	B	53/54 (98%)	53 (100%)	0	100	100
3	C	100/109 (92%)	99 (99%)	1 (1%)	73	85
All	All	496/555 (89%)	494 (100%)	2 (0%)	89	95

All (2) residues with a non-rotameric sidechain are listed below:

Mol	Chain	Res	Type
1	A	232	PRO
3	C	86	CYS

Sometimes sidechains can be flipped to improve hydrogen bonding and reduce clashes. There are no such sidechains identified.

5.3.3 RNA ⓘ

There are no RNA molecules in this entry.

5.4 Non-standard residues in protein, DNA, RNA chains ⓘ

1 non-standard protein/DNA/RNA residue is modelled in this entry.

In the following table, the Counts columns list the number of bonds (or angles) for which Mogul statistics could be retrieved, the number of bonds (or angles) that are observed in the model and the number of bonds (or angles) that are defined in the Chemical Component Dictionary. The Link column lists molecule types, if any, to which the group is linked. The Z score for a bond length (or angle) is the number of standard deviations the observed value is removed from the expected value. A bond length (or angle) with $|Z| > 2$ is considered an outlier worth inspection. RMSZ is the root-mean-square of all Z scores of the bond lengths (or angles).

Mol	Type	Chain	Res	Link	Bond lengths			Bond angles		
					Counts	RMSZ	$\# Z > 2$	Counts	RMSZ	$\# Z > 2$
2	PCA	B	1	2	7,8,9	1.79	1 (14%)	9,10,12	1.96	4 (44%)

In the following table, the Chirals column lists the number of chiral outliers, the number of chiral centers analysed, the number of these observed in the model and the number defined in the Chemical Component Dictionary. Similar counts are reported in the Torsion and Rings columns. '-' means no outliers of that kind were identified.

Mol	Type	Chain	Res	Link	Chirals	Torsions	Rings
2	PCA	B	1	2	-	0/0/11/13	0/1/1/1

All (1) bond length outliers are listed below:

Mol	Chain	Res	Type	Atoms	Z	Observed(Å)	Ideal(Å)
2	B	1	PCA	CD-N	4.58	1.45	1.34

All (4) bond angle outliers are listed below:

Mol	Chain	Res	Type	Atoms	Z	Observed(°)	Ideal(°)
2	B	1	PCA	CB-CA-N	2.73	110.76	103.24
2	B	1	PCA	OE-CD-CG	-2.72	121.87	126.72
2	B	1	PCA	CA-N-CD	-2.63	104.56	113.58
2	B	1	PCA	CG-CD-N	2.48	114.45	108.39

There are no chirality outliers.

There are no torsion outliers.

There are no ring outliers.

No monomer is involved in short contacts.

5.5 Carbohydrates ⓘ

There are no oligosaccharides in this entry.

5.6 Ligand geometry

Of 17 ligands modelled in this entry, 16 are monoatomic - leaving 1 for Mogul analysis.

In the following table, the Counts columns list the number of bonds (or angles) for which Mogul statistics could be retrieved, the number of bonds (or angles) that are observed in the model and the number of bonds (or angles) that are defined in the Chemical Component Dictionary. The Link column lists molecule types, if any, to which the group is linked. The Z score for a bond length (or angle) is the number of standard deviations the observed value is removed from the expected value. A bond length (or angle) with $|Z| > 2$ is considered an outlier worth inspection. RMSZ is the root-mean-square of all Z scores of the bond lengths (or angles).

Mol	Type	Chain	Res	Link	Bond lengths			Bond angles		
					Counts	RMSZ	$\# Z > 2$	Counts	RMSZ	$\# Z > 2$
6	PE4	A	513	4	14,14,23	0.62	0	13,13,22	0.90	0

In the following table, the Chirals column lists the number of chiral outliers, the number of chiral centers analysed, the number of these observed in the model and the number defined in the Chemical Component Dictionary. Similar counts are reported in the Torsion and Rings columns. '-' means no outliers of that kind were identified.

Mol	Type	Chain	Res	Link	Chirals	Torsions	Rings
6	PE4	A	513	4	-	6/12/12/21	-

There are no bond length outliers.

There are no bond angle outliers.

There are no chirality outliers.

All (6) torsion outliers are listed below:

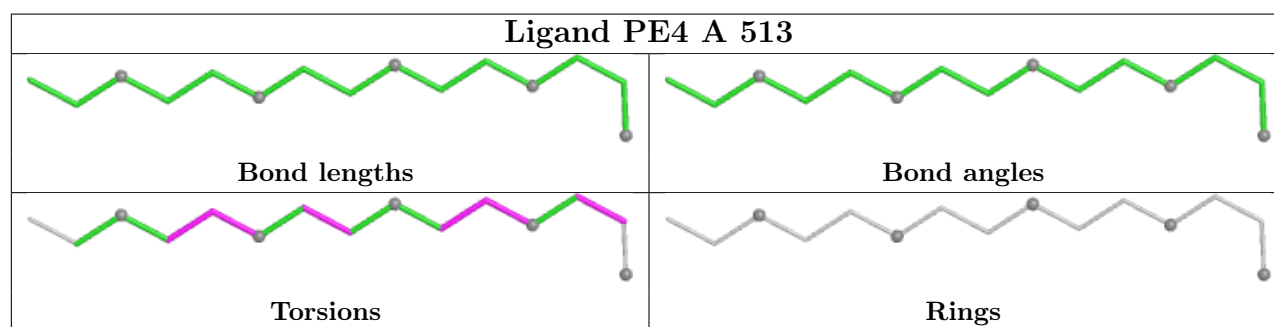
Mol	Chain	Res	Type	Atoms
6	A	513	PE4	O4-C7-C8-O5
6	A	513	PE4	O1-C1-C2-O2
6	A	513	PE4	O2-C3-C4-O3
6	A	513	PE4	C8-C7-O4-C6
6	A	513	PE4	O3-C5-C6-O4
6	A	513	PE4	C4-C3-O2-C2

There are no ring outliers.

1 monomer is involved in 1 short contact:

Mol	Chain	Res	Type	Clashes	Symm-Clashes
6	A	513	PE4	1	0

The following is a two-dimensional graphical depiction of Mogul quality analysis of bond lengths, bond angles, torsion angles, and ring geometry for all instances of the Ligand of Interest. In addition, ligands with molecular weight > 250 and outliers as shown on the validation Tables will also be included. For torsion angles, if less than 5% of the Mogul distribution of torsion angles is within 10 degrees of the torsion angle in question, then that torsion angle is considered an outlier. Any bond that is central to one or more torsion angles identified as an outlier by Mogul will be highlighted in the graph. For rings, the root-mean-square deviation (RMSD) between the ring in question and similar rings identified by Mogul is calculated over all ring torsion angles. If the average RMSD is greater than 60 degrees and the minimal RMSD between the ring in question and any Mogul-identified rings is also greater than 60 degrees, then that ring is considered an outlier. The outliers are highlighted in purple. The color gray indicates Mogul did not find sufficient equivalents in the CSD to analyse the geometry.



5.7 Other polymers [i](#)

There are no such residues in this entry.

5.8 Polymer linkage issues [i](#)

There are no chain breaks in this entry.

6 Fit of model and data ⓘ

6.1 Protein, DNA and RNA chains ⓘ

In the following table, the column labelled ‘#RSRZ> 2’ contains the number (and percentage) of RSRZ outliers, followed by percent RSRZ outliers for the chain as percentile scores relative to all X-ray entries and entries of similar resolution. The OWAB column contains the minimum, median, 95th percentile and maximum values of the occupancy-weighted average B-factor per residue. The column labelled ‘Q< 0.9’ lists the number of (and percentage) of residues with an average occupancy less than 0.9.

Mol	Chain	Analysed	<RSRZ>	#RSRZ>2	OWAB(Å ²)	Q<0.9
1	A	406/450 (90%)	0.32	46 (11%) 11 11	18, 36, 131, 156	0
2	B	59/60 (98%)	0.43	2 (3%) 48 45	33, 44, 56, 63	0
3	C	118/119 (99%)	1.03	21 (17%) 4 4	31, 58, 95, 112	0
All	All	583/629 (92%)	0.48	69 (11%) 10 10	18, 42, 118, 156	0

All (69) RSRZ outliers are listed below:

Mol	Chain	Res	Type	RSRZ
1	A	47	TRP	5.1
3	C	118	CYS	4.6
1	A	78	LEU	4.4
1	A	452	LEU	4.4
1	A	433	ASP	4.1
3	C	22	ASP	4.0
1	A	46	VAL	4.0
1	A	430	LEU	3.9
1	A	55	LEU	3.8
1	A	81	VAL	3.7
1	A	127	ASP	3.6
1	A	203	ASP	3.4
1	A	57	LEU	3.4
3	C	105	THR	3.3
1	A	442	ILE	3.3
1	A	54	SER	3.2
3	C	117	ARG	3.2
1	A	206	PRO	3.2
3	C	115	PRO	3.1
3	C	100	CYS	3.1
1	A	448	THR	3.1
1	A	434	ILE	3.1
3	C	113	ILE	3.1

Continued on next page...

Continued from previous page...

Mol	Chain	Res	Type	RSRZ
1	A	417	GLU	3.0
2	B	45	GLN	3.0
3	C	112	LYS	3.0
1	A	48	ALA	2.9
1	A	51	PHE	2.9
3	C	18	ALA	2.9
1	A	60	LEU	2.9
1	A	61	VAL	2.8
1	A	77	LYS	2.8
3	C	32	SER	2.8
3	C	114	ASP	2.8
2	B	55	ASN	2.8
1	A	431	LEU	2.8
1	A	62	CYS	2.7
1	A	128	THR	2.7
1	A	453	PHE	2.7
1	A	447	LEU	2.6
1	A	300	PHE	2.6
1	A	444	ALA	2.6
1	A	360	CYS	2.6
1	A	58	LEU	2.5
1	A	65	ARG	2.5
3	C	41	ARG	2.5
1	A	137	GLU	2.4
1	A	450	LEU	2.4
3	C	25	CYS	2.4
3	C	49	CYS	2.4
1	A	446	ILE	2.3
1	A	296	GLY	2.3
1	A	427	VAL	2.2
1	A	130	THR	2.2
1	A	437	GLN	2.2
3	C	79	CYS	2.2
3	C	38	ASP	2.2
1	A	438	MET	2.2
1	A	76	THR	2.1
3	C	104	ALA	2.1
1	A	424	ALA	2.1
1	A	440	LEU	2.1
3	C	42	CYS	2.1
3	C	106	TYR	2.1
3	C	111	HIS	2.0

Continued on next page...

Continued from previous page...

Mol	Chain	Res	Type	RSRZ
1	A	69	TYR	2.0
1	A	53	GLY	2.0
3	C	16	VAL	2.0
1	A	445	SER	2.0

6.2 Non-standard residues in protein, DNA, RNA chains [i](#)

In the following table, the Atoms column lists the number of modelled atoms in the group and the number defined in the chemical component dictionary. The B-factors column lists the minimum, median, 95th percentile and maximum values of B factors of atoms in the group. The column labelled 'Q< 0.9' lists the number of atoms with occupancy less than 0.9.

Mol	Type	Chain	Res	Atoms	RSCC	RSR	B-factors(Å ²)	Q<0.9
2	PCA	B	1	8/9	0.92	0.14	41,41,42,46	0

6.3 Carbohydrates [i](#)

There are no monosaccharides in this entry.

6.4 Ligands [i](#)

In the following table, the Atoms column lists the number of modelled atoms in the group and the number defined in the chemical component dictionary. The B-factors column lists the minimum, median, 95th percentile and maximum values of B factors of atoms in the group. The column labelled 'Q< 0.9' lists the number of atoms with occupancy less than 0.9.

Mol	Type	Chain	Res	Atoms	RSCC	RSR	B-factors(Å ²)	Q<0.9
4	CS	A	511	1/1	0.62	0.18	239,239,239,239	0
4	CS	B	102	1/1	0.82	0.11	104,104,104,104	1
6	PE4	A	513	15/24	0.82	0.16	33,37,45,46	0
4	CS	A	508	1/1	0.86	0.13	67,67,67,67	1
4	CS	C	202	1/1	0.89	0.10	86,86,86,86	1
4	CS	A	501	1/1	0.89	0.08	178,178,178,178	0
4	CS	A	502	1/1	0.90	0.08	199,199,199,199	1
4	CS	A	507	1/1	0.94	0.07	37,37,37,37	1
4	CS	A	503	1/1	0.94	0.12	74,74,74,74	1
4	CS	A	504	1/1	0.94	0.10	41,41,41,41	1
4	CS	B	101	1/1	0.95	0.08	49,49,49,49	1
5	CL	A	512	1/1	0.95	0.20	49,49,49,49	0
4	CS	C	201	1/1	0.95	0.11	40,40,40,40	1

Continued on next page...

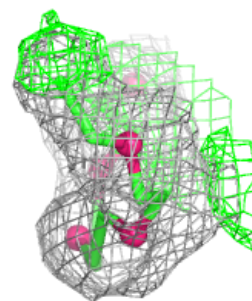
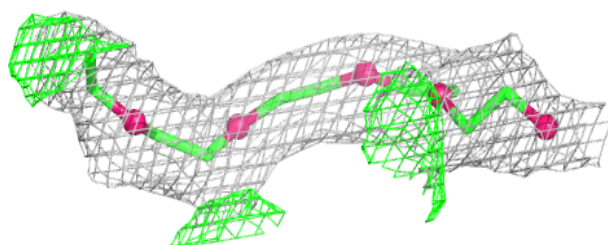
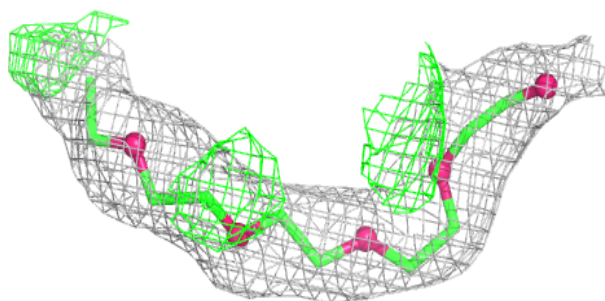
Continued from previous page...

Mol	Type	Chain	Res	Atoms	RSCC	RSR	B-factors(\AA^2)	Q<0.9
4	CS	A	509	1/1	0.96	0.06	92,92,92,92	1
4	CS	A	505	1/1	0.96	0.05	60,60,60,60	1
4	CS	A	510	1/1	0.98	0.21	77,77,77,77	1
4	CS	A	506	1/1	0.98	0.05	24,24,24,24	1

The following is a graphical depiction of the model fit to experimental electron density of all instances of the Ligand of Interest. In addition, ligands with molecular weight > 250 and outliers as shown on the geometry validation Tables will also be included. Each fit is shown from different orientation to approximate a three-dimensional view.

Electron density around PE4 A 513:

2mF_o-DF_c (at 0.7 rmsd) in gray
mF_o-DF_c (at 3 rmsd) in purple (negative)
and green (positive)



6.5 Other polymers ⓘ

There are no such residues in this entry.