



wwPDB X-ray Structure Validation Summary Report ⓘ

Apr 28, 2025 – 08:07 PM EDT

PDB ID : 2QPE / pdb_00002qpe
Title : An unexpected outcome of surface-engineering an integral membrane protein: Improved crystallization of cytochrome ba3 oxidase from *Thermus thermophilus*
Authors : Liu, B.; Luna, V.M.; Chen, Y.; Stout, C.D.; Fee, J.A.
Deposited on : 2007-07-23
Resolution : 2.90 Å(reported)

This is a wwPDB X-ray Structure Validation Summary Report for a publicly released PDB entry.

We welcome your comments at validation@mail.wwpdb.org

A user guide is available at

<https://www.wwpdb.org/validation/2017/XrayValidationReportHelp>

with specific help available everywhere you see the ⓘ symbol.

The types of validation reports are described at

<http://www.wwpdb.org/validation/2017/FAQs#types>.

The following versions of software and data (see [references ⓘ](#)) were used in the production of this report:

MolProbity : 4-5-2 with Phenix2.0rc1
Mogul : 2022.3.0, CSD as543be (2022)
Xtriage (Phenix) : 2.0rc1
EDS : 3.0
buster-report : 1.1.7 (2018)
Percentile statistics : 20231227.v01 (using entries in the PDB archive December 27th 2023)
CCP4 : 9.0.006 (Gargrove)
Density-Fitness : 1.0.12
Ideal geometry (proteins) : Engh & Huber (2001)
Ideal geometry (DNA, RNA) : Parkinson et al. (1996)
Validation Pipeline (wwPDB-VP) : 2.43.1

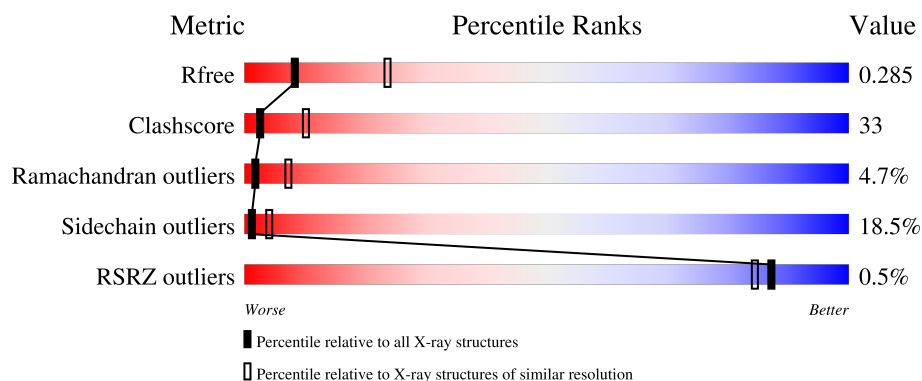
1 Overall quality at a glance

The following experimental techniques were used to determine the structure:

X-RAY DIFFRACTION

The reported resolution of this entry is 2.90 Å.

Percentile scores (ranging between 0-100) for global validation metrics of the entry are shown in the following graphic. The table shows the number of entries on which the scores are based.



Metric	Whole archive (#Entries)	Similar resolution (#Entries, resolution range(Å))
R_{free}	164625	2335 (2.90-2.90)
Clashscore	180529	2564 (2.90-2.90)
Ramachandran outliers	177936	2514 (2.90-2.90)
Sidechain outliers	177891	2516 (2.90-2.90)
RSRZ outliers	164620	2337 (2.90-2.90)

The table below summarises the geometric issues observed across the polymeric chains and their fit to the electron density. The red, orange, yellow and green segments of the lower bar indicate the fraction of residues that contain outliers for ≥ 3 , 2, 1 and 0 types of geometric quality criteria respectively. A grey segment represents the fraction of residues that are not modelled. The numeric value for each fraction is indicated below the corresponding segment, with a dot representing fractions $\leq 5\%$. The upper red bar (where present) indicates the fraction of residues that have poor fit to the electron density. The numeric value is given above the bar.

Mol	Chain	Length	Quality of chain
1	A	568	<div> <div>%</div> <div> <div></div> <div>37%</div> <div>46%</div> <div>14%</div> <div>..</div> </div> </div>
2	B	168	<div> <div>49%</div> <div>39%</div> <div>9%</div> <div>..</div> </div>
3	C	34	<div> <div>35%</div> <div>38%</div> <div>24%</div> <div>.</div> </div>

The following table lists non-polymeric compounds, carbohydrate monomers and non-standard

residues in protein, DNA, RNA chains that are outliers for geometric or electron-density-fit criteria:

Mol	Type	Chain	Res	Chirality	Geometry	Clashes	Electron density
6	HAS	A	801	X	-	-	-

2 Entry composition

There are 7 unique types of molecules in this entry. The entry contains 6077 atoms, of which 0 are hydrogens and 0 are deuteriums.

In the tables below, the ZeroOcc column contains the number of atoms modelled with zero occupancy, the AltConf column contains the number of residues with at least one atom in alternate conformation and the Trace column contains the number of residues modelled with at most 2 atoms.

- Molecule 1 is a protein called Cytochrome c oxidase subunit 1.

Mol	Chain	Residues	Atoms					ZeroOcc	AltConf	Trace
1	A	557	Total	C	N	O	S	0	0	0
			4409	2985	709	699	16			

There are 8 discrepancies between the modelled and reference sequences:

Chain	Residue	Modelled	Actual	Comment	Reference
A	-5	MET	-	expression tag	UNP Q5SJ79
A	-4	HIS	-	expression tag	UNP Q5SJ79
A	-3	HIS	-	expression tag	UNP Q5SJ79
A	-2	HIS	-	expression tag	UNP Q5SJ79
A	-1	HIS	-	expression tag	UNP Q5SJ79
A	0	HIS	-	expression tag	UNP Q5SJ79
A	1	HIS	-	expression tag	UNP Q5SJ79
A	258	ARG	LYS	engineered mutation	UNP Q5SJ79

- Molecule 2 is a protein called Cytochrome c oxidase subunit 2.

Mol	Chain	Residues	Atoms					ZeroOcc	AltConf	Trace
2	B	166	Total	C	N	O	S	0	0	0
			1298	844	217	233	4			

There is a discrepancy between the modelled and reference sequences:

Chain	Residue	Modelled	Actual	Comment	Reference
B	4	GLN	GLU	engineered mutation	UNP Q5SJ80

- Molecule 3 is a protein called Cytochrome c oxidase polypeptide 2A.

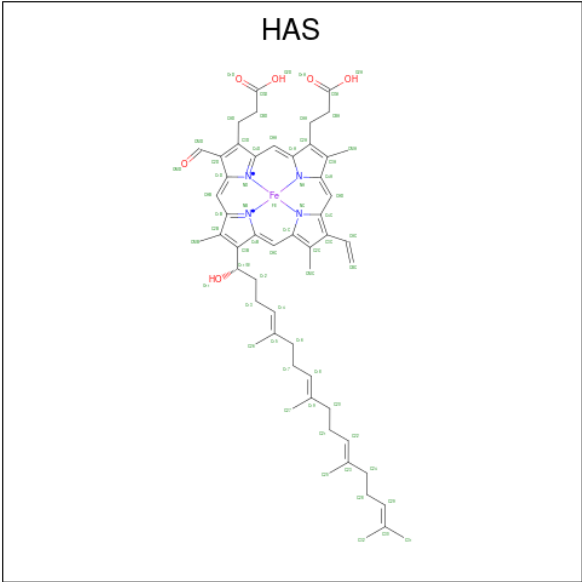
Mol	Chain	Residues	Atoms				ZeroOcc	AltConf	Trace
3	C	33	Total	C	N	O	0	0	0
			259	179	39	41			

- | Mol | Chain | Residues | Atoms | ZeroOcc | AltConf |
|-----|-------|----------|-----------------|---------|---------|
| 4 | A | 1 | Total Cu
1 1 | 0 | 0 |

- # HEM

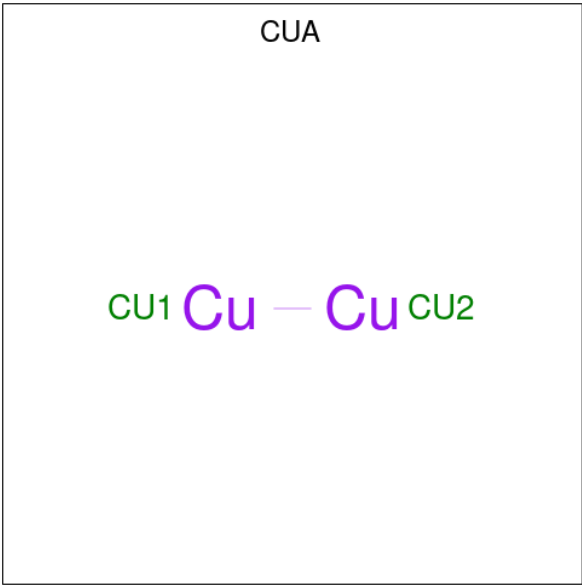
Mol	Chain	Residues	Atoms					ZeroOcc	AltConf
5	A	1	Total 43	C 34	Fe 1	N 4	O 4	0	0

- 

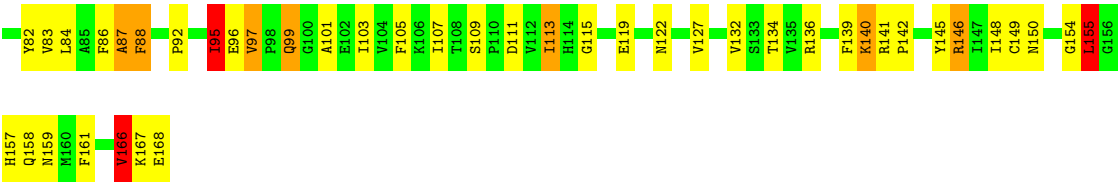


Mol	Chain	Residues	Atoms					ZeroOcc	AltConf
			Total	C	Fe	N	O		
6	A	1	65	54	1	4	6	0	0

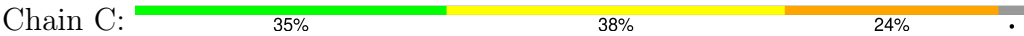
- Molecule 7 is DINUCLEAR COPPER ION (CCD ID: CUA) (formula: Cu₂).



Mol	Chain	Residues	Atoms		ZeroOcc	AltConf
			Total	Cu		
7	B	1	2	2	0	0



● Molecule 3: Cytochrome c oxidase polypeptide 2A



4 Data and refinement statistics

Property	Value	Source
Space group	P 41 21 2	Depositor
Cell constants a, b, c, α , β , γ	114.64Å 114.64Å 148.57Å 90.00° 90.00° 90.00°	Depositor
Resolution (Å)	19.99 – 2.90 19.99 – 2.90	Depositor EDS
% Data completeness (in resolution range)	95.1 (19.99-2.90) 94.7 (19.99-2.90)	Depositor EDS
R_{merge}	0.04	Depositor
R_{sym}	(Not available)	Depositor
$\langle I/\sigma(I) \rangle$ ¹	1.33 (at 2.88Å)	Xtriage
Refinement program	REFMAC 5.2.0019	Depositor
R, R_{free}	0.234 , 0.302 0.196 , 0.285	Depositor DCC
R_{free} test set	1083 reflections (5.06%)	wwPDB-VP
Wilson B-factor (Å ²)	93.1	Xtriage
Anisotropy	0.073	Xtriage
Bulk solvent k_{sol} (e/Å ³), B_{sol} (Å ²)	0.27 , 66.3	EDS
L-test for twinning ²	$\langle L \rangle = 0.48$, $\langle L^2 \rangle = 0.31$	Xtriage
Estimated twinning fraction	No twinning to report.	Xtriage
F_o, F_c correlation	0.95	EDS
Total number of atoms	6077	wwPDB-VP
Average B, all atoms (Å ²)	92.0	wwPDB-VP

Xtriage's analysis on translational NCS is as follows: *The largest off-origin peak in the Patterson function is 2.84% of the height of the origin peak. No significant pseudotranslation is detected.*

¹Intensities estimated from amplitudes.

²Theoretical values of $\langle |L| \rangle$, $\langle L^2 \rangle$ for acentric reflections are 0.5, 0.333 respectively for untwinned datasets, and 0.375, 0.2 for perfectly twinned datasets.

5 Model quality i

5.1 Standard geometry i

Bond lengths and bond angles in the following residue types are not validated in this section: CU1, HAS, HEM, CUA

The Z score for a bond length (or angle) is the number of standard deviations the observed value is removed from the expected value. A bond length (or angle) with $|Z| > 5$ is considered an outlier worth inspection. RMSZ is the root-mean-square of all Z scores of the bond lengths (or angles).

Mol	Chain	Bond lengths		Bond angles	
		RMSZ	# Z >5	RMSZ	# Z >5
1	A	1.21	9/4566 (0.2%)	1.42	35/6266 (0.6%)
2	B	1.19	3/1335 (0.2%)	1.42	13/1822 (0.7%)
3	C	1.27	0/265	1.44	4/359 (1.1%)
All	All	1.20	12/6166 (0.2%)	1.42	52/8447 (0.6%)

Chiral center outliers are detected by calculating the chiral volume of a chiral center and verifying if the center is modelled as a planar moiety or with the opposite hand. A planarity outlier is detected by checking planarity of atoms in a peptide group, atoms in a mainchain group or atoms of a sidechain that are expected to be planar.

Mol	Chain	#Chirality outliers	#Planarity outliers
1	A	0	1
2	B	0	1
All	All	0	2

The worst 5 of 12 bond length outliers are listed below:

Mol	Chain	Res	Type	Atoms	Z	Observed(Å)	Ideal(Å)
2	B	72	VAL	CA-CB	7.26	1.64	1.54
1	A	119	VAL	CA-CB	6.94	1.64	1.54
1	A	547	VAL	CA-CB	6.38	1.63	1.54
2	B	45	ILE	CA-C	-6.11	1.48	1.53
1	A	378	THR	CA-C	-5.89	1.45	1.52

The worst 5 of 52 bond angle outliers are listed below:

Mol	Chain	Res	Type	Atoms	Z	Observed(°)	Ideal(°)
1	A	218	GLY	N-CA-C	9.95	126.12	110.90
1	A	357	ILE	CA-C-N	-9.93	108.35	119.28
1	A	357	ILE	C-N-CA	-9.93	108.35	119.28

Continued on next page...

Continued from previous page...

Mol	Chain	Res	Type	Atoms	Z	Observed(°)	Ideal(°)
2	B	155	LEU	N-CA-C	8.35	122.73	112.54
3	C	12	ILE	N-CA-C	-7.56	105.19	113.43

There are no chirality outliers.

All (2) planarity outliers are listed below:

Mol	Chain	Res	Type	Group
1	A	8	ILE	Peptide
2	B	87	ALA	Peptide

5.2 Too-close contacts ⓘ

In the following table, the Non-H and H(model) columns list the number of non-hydrogen atoms and hydrogen atoms in the chain respectively. The H(added) column lists the number of hydrogen atoms added and optimized by MolProbity. The Clashes column lists the number of clashes within the asymmetric unit, whereas Symm-Clashes lists symmetry-related clashes.

Mol	Chain	Non-H	H(model)	H(added)	Clashes	Symm-Clashes
1	A	4409	0	4515	350	0
2	B	1298	0	1282	62	0
3	C	259	0	279	15	0
4	A	1	0	0	0	0
5	A	43	0	30	7	0
6	A	65	0	61	14	0
7	B	2	0	0	0	0
All	All	6077	0	6167	408	0

The all-atom clashscore is defined as the number of clashes found per 1000 atoms (including hydrogen atoms). The all-atom clashscore for this structure is 33.

The worst 5 of 408 close contacts within the same asymmetric unit are listed below, sorted by their clash magnitude.

Atom-1	Atom-2	Interatomic distance (Å)	Clash overlap (Å)
1:A:233:HIS:NE2	1:A:237:TYR:CE2	1.71	1.53
1:A:233:HIS:NE2	1:A:237:TYR:HE2	0.79	1.27
1:A:385:PHE:CB	6:A:801:HAS:HMA2	1.73	1.18
1:A:385:PHE:CG	6:A:801:HAS:HMA2	1.81	1.16
1:A:410:GLY:CA	1:A:502:ALA:HB2	1.74	1.16

There are no symmetry-related clashes.

5.3 Torsion angles [i](#)

5.3.1 Protein backbone [i](#)

In the following table, the Percentiles column shows the percent Ramachandran outliers of the chain as a percentile score with respect to all X-ray entries followed by that with respect to entries of similar resolution.

The Analysed column shows the number of residues for which the backbone conformation was analysed, and the total number of residues.

Mol	Chain	Analysed	Favoured	Allowed	Outliers	Percentiles	
1	A	555/568 (98%)	427 (77%)	100 (18%)	28 (5%)	1	6
2	B	164/168 (98%)	139 (85%)	21 (13%)	4 (2%)	5	19
3	C	31/34 (91%)	19 (61%)	9 (29%)	3 (10%)	0	1
All	All	750/770 (97%)	585 (78%)	130 (17%)	35 (5%)	2	7

5 of 35 Ramachandran outliers are listed below:

Mol	Chain	Res	Type
1	A	11	VAL
1	A	58	LEU
1	A	102	ASN
1	A	189	PHE
1	A	366	ASN

5.3.2 Protein sidechains [i](#)

In the following table, the Percentiles column shows the percent sidechain outliers of the chain as a percentile score with respect to all X-ray entries followed by that with respect to entries of similar resolution.

The Analysed column shows the number of residues for which the sidechain conformation was analysed, and the total number of residues.

Mol	Chain	Analysed	Rotameric	Outliers	Percentiles	
1	A	453/462 (98%)	368 (81%)	85 (19%)	1	4
2	B	136/138 (99%)	112 (82%)	24 (18%)	1	5
3	C	26/27 (96%)	21 (81%)	5 (19%)	1	3
All	All	615/627 (98%)	501 (82%)	114 (18%)	1	4

5 of 114 residues with a non-rotameric sidechain are listed below:

Mol	Chain	Res	Type
1	A	430	LEU
3	C	6	LYS
1	A	500	GLU
3	C	2	GLU
2	B	99	GLN

Sometimes sidechains can be flipped to improve hydrogen bonding and reduce clashes. 5 of 12 such sidechains are listed below:

Mol	Chain	Res	Type
2	B	5	HIS
2	B	78	GLN
2	B	151	GLN
2	B	91	GLN
1	A	254	GLN

5.3.3 RNA [i](#)

There are no RNA molecules in this entry.

5.4 Non-standard residues in protein, DNA, RNA chains [i](#)

There are no non-standard protein/DNA/RNA residues in this entry.

5.5 Carbohydrates [i](#)

There are no oligosaccharides in this entry.

5.6 Ligand geometry [i](#)

Of 4 ligands modelled in this entry, 1 is monoatomic - leaving 3 for Mogul analysis.

In the following table, the Counts columns list the number of bonds (or angles) for which Mogul statistics could be retrieved, the number of bonds (or angles) that are observed in the model and the number of bonds (or angles) that are defined in the Chemical Component Dictionary. The Link column lists molecule types, if any, to which the group is linked. The Z score for a bond length (or angle) is the number of standard deviations the observed value is removed from the expected value. A bond length (or angle) with $|Z| > 2$ is considered an outlier worth inspection. RMSZ is the root-mean-square of all Z scores of the bond lengths (or angles).

Mol	Type	Chain	Res	Link	Bond lengths			Bond angles		
					Counts	RMSZ	# Z > 2	Counts	RMSZ	# Z > 2
5	HEM	A	800	1	42,50,50	2.13	9 (21%)	46,82,82	2.28	13 (28%)
7	CUA	B	802	2	0,1,1	-	-	-	-	-
6	HAS	A	801	1	69,72,72	2.62	19 (27%)	75,109,109	3.24	39 (52%)

In the following table, the Chirals column lists the number of chiral outliers, the number of chiral centers analysed, the number of these observed in the model and the number defined in the Chemical Component Dictionary. Similar counts are reported in the Torsion and Rings columns. '-' means no outliers of that kind were identified.

Mol	Type	Chain	Res	Link	Chirals	Torsions	Rings
5	HEM	A	800	1	-	6/12/54/54	-
6	HAS	A	801	1	1/1/8/18	8/40/82/82	-

The worst 5 of 28 bond length outliers are listed below:

Mol	Chain	Res	Type	Atoms	Z	Observed(Å)	Ideal(Å)
6	A	801	HAS	CHD-C4A	11.34	1.50	1.35
5	A	800	HEM	C3D-C2D	8.39	1.54	1.36
6	A	801	HAS	CHC-C4B	6.71	1.51	1.34
6	A	801	HAS	C2A-C3A	6.55	1.50	1.36
6	A	801	HAS	CHB-C1D	6.50	1.51	1.38

The worst 5 of 52 bond angle outliers are listed below:

Mol	Chain	Res	Type	Atoms	Z	Observed(°)	Ideal(°)
6	A	801	HAS	CHA-C1A-NA	7.67	132.80	124.45
6	A	801	HAS	CHA-C1A-C2A	-7.64	112.81	124.86
6	A	801	HAS	CMC-C2C-C1C	-7.42	117.58	128.46
5	A	800	HEM	CBA-CAA-C2A	6.79	123.95	112.54
6	A	801	HAS	CHD-C4A-NA	6.41	131.42	124.44

All (1) chirality outliers are listed below:

Mol	Chain	Res	Type	Atom
6	A	801	HAS	NA

5 of 14 torsion outliers are listed below:

Mol	Chain	Res	Type	Atoms
5	A	800	HEM	C1A-C2A-CAA-CBA
5	A	800	HEM	C3A-C2A-CAA-CBA

Continued on next page...

Continued from previous page...

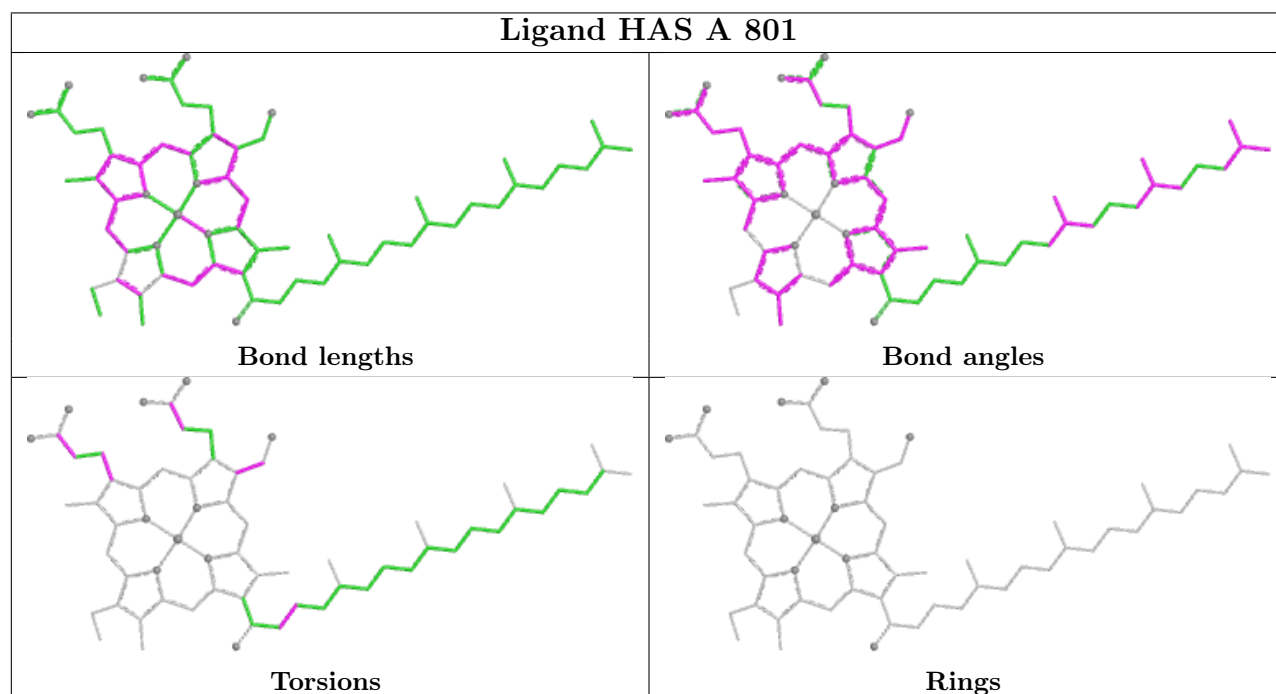
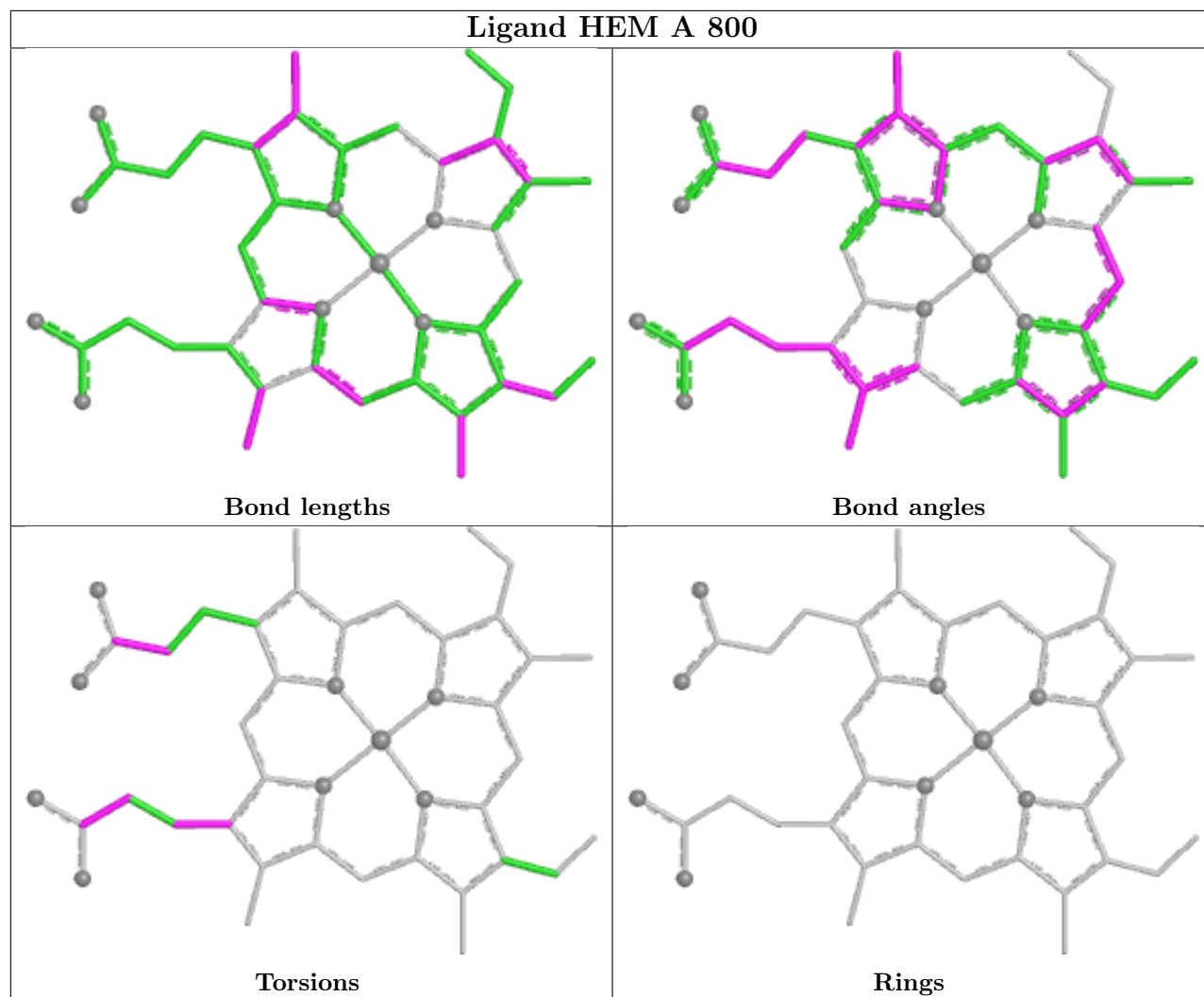
Mol	Chain	Res	Type	Atoms
6	A	801	HAS	C1D-C2D-CMD-OMD
6	A	801	HAS	C3D-C2D-CMD-OMD
6	A	801	HAS	C1A-C2A-CAA-CBA

There are no ring outliers.

2 monomers are involved in 21 short contacts:

Mol	Chain	Res	Type	Clashes	Symm-Clashes
5	A	800	HEM	7	0
6	A	801	HAS	14	0

The following is a two-dimensional graphical depiction of Mogul quality analysis of bond lengths, bond angles, torsion angles, and ring geometry for all instances of the Ligand of Interest. In addition, ligands with molecular weight > 250 and outliers as shown on the validation Tables will also be included. For torsion angles, if less than 5% of the Mogul distribution of torsion angles is within 10 degrees of the torsion angle in question, then that torsion angle is considered an outlier. Any bond that is central to one or more torsion angles identified as an outlier by Mogul will be highlighted in the graph. For rings, the root-mean-square deviation (RMSD) between the ring in question and similar rings identified by Mogul is calculated over all ring torsion angles. If the average RMSD is greater than 60 degrees and the minimal RMSD between the ring in question and any Mogul-identified rings is also greater than 60 degrees, then that ring is considered an outlier. The outliers are highlighted in purple. The color gray indicates Mogul did not find sufficient equivalents in the CSD to analyse the geometry.



5.7 Other polymers [i](#)

There are no such residues in this entry.

5.8 Polymer linkage issues [i](#)

There are no chain breaks in this entry.

6 Fit of model and data [i](#)

6.1 Protein, DNA and RNA chains [i](#)

In the following table, the column labelled ‘#RSRZ> 2’ contains the number (and percentage) of RSRZ outliers, followed by percent RSRZ outliers for the chain as percentile scores relative to all X-ray entries and entries of similar resolution. The OWAB column contains the minimum, median, 95th percentile and maximum values of the occupancy-weighted average B-factor per residue. The column labelled ‘Q< 0.9’ lists the number of (and percentage) of residues with an average occupancy less than 0.9.

Mol	Chain	Analysed	<RSRZ>	#RSRZ>2	OWAB(Å ²)	Q<0.9
1	A	557/568 (98%)	-0.59	4 (0%) 84 80	64, 88, 129, 216	0
2	B	166/168 (98%)	-0.79	0 100 100	71, 88, 124, 174	0
3	C	33/34 (97%)	-0.80	0 100 100	69, 79, 133, 154	0
All	All	756/770 (98%)	-0.65	4 (0%) 87 84	64, 88, 131, 216	0

All (4) RSRZ outliers are listed below:

Mol	Chain	Res	Type	RSRZ
1	A	173	ALA	3.8
1	A	8	ILE	2.9
1	A	503	GLU	2.4
1	A	9	SER	2.2

6.2 Non-standard residues in protein, DNA, RNA chains [i](#)

There are no non-standard protein/DNA/RNA residues in this entry.

6.3 Carbohydrates [i](#)

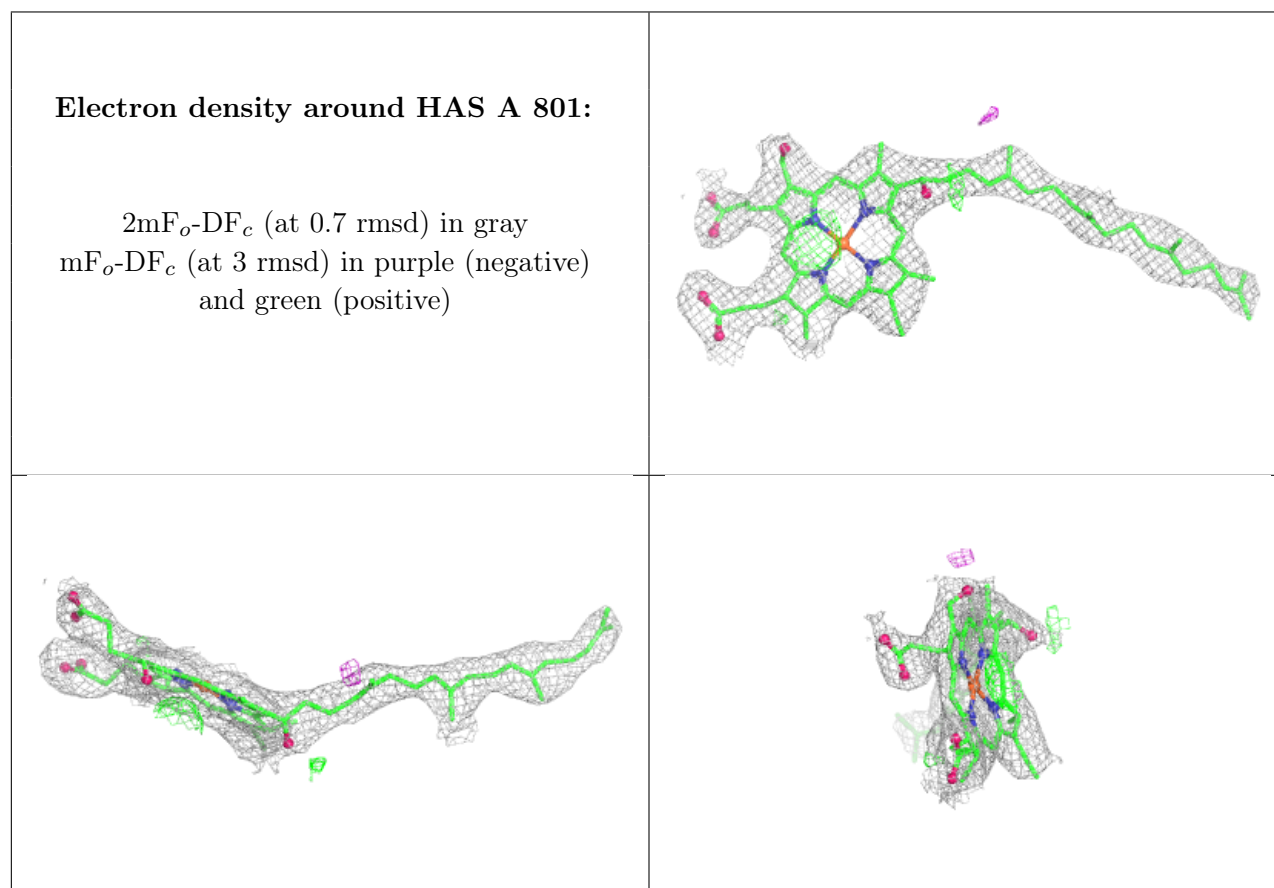
There are no monosaccharides in this entry.

6.4 Ligands [i](#)

In the following table, the Atoms column lists the number of modelled atoms in the group and the number defined in the chemical component dictionary. The B-factors column lists the minimum, median, 95th percentile and maximum values of B factors of atoms in the group. The column labelled ‘Q< 0.9’ lists the number of atoms with occupancy less than 0.9.

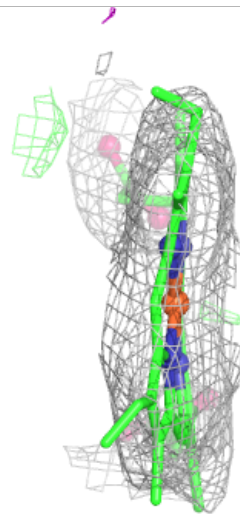
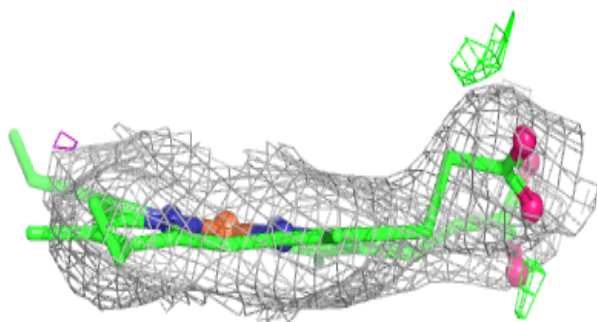
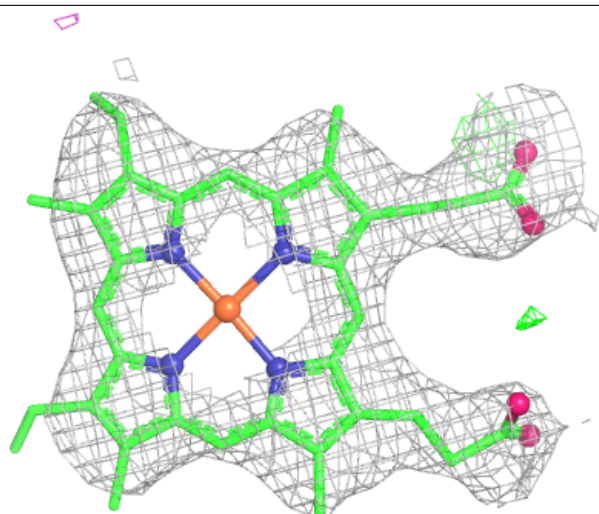
Mol	Type	Chain	Res	Atoms	RSCC	RSR	B-factors(\AA^2)	Q<0.9
6	HAS	A	801	65/65	0.96	0.09	53,74,87,93	0
5	HEM	A	800	43/43	0.97	0.07	50,68,90,98	0
4	CU1	A	803	1/1	0.98	0.04	84,84,84,84	0
7	CUA	B	802	2/2	0.99	0.02	88,88,88,90	0

The following is a graphical depiction of the model fit to experimental electron density of all instances of the Ligand of Interest. In addition, ligands with molecular weight > 250 and outliers as shown on the geometry validation Tables will also be included. Each fit is shown from different orientation to approximate a three-dimensional view.



Electron density around HEM A 800:

$2mF_o-DF_c$ (at 0.7 rmsd) in gray
 mF_o-DF_c (at 3 rmsd) in purple (negative)
and green (positive)



6.5 Other polymers [i](#)

There are no such residues in this entry.