



wwPDB X-ray Structure Validation Summary Report ⓘ

Dec 14, 2024 – 08:33 PM EST

PDB ID : 1R1C
Title : PSEUDOMONAS AERUGINOSA W48F/Y72F/H83Q/Y108W-AZURIN RE
(PHEN)(CO)3(HIS107)
Authors : Miller, J.E.; Gradinaru, C.; Crane, B.R.; Di Bilio, A.J.
Deposited on : 2003-09-23
Resolution : 1.90 Å(reported)

This is a wwPDB X-ray Structure Validation Summary Report for a publicly released PDB entry.

We welcome your comments at validation@mail.wwpdb.org

A user guide is available at

<https://www.wwpdb.org/validation/2017/XrayValidationReportHelp>

with specific help available everywhere you see the ⓘ symbol.

The types of validation reports are described at

<http://www.wwpdb.org/validation/2017/FAQs#types>.

The following versions of software and data (see [references ⓘ](#)) were used in the production of this report:

MolProbity : 4.02b-467
Mogul : 2022.3.0, CSD as543be (2022)
Xtriage (Phenix) : **NOT EXECUTED**
EDS : **NOT EXECUTED**
Percentile statistics : 20231227.v01 (using entries in the PDB archive December 27th 2023)
Ideal geometry (proteins) : Engh & Huber (2001)
Ideal geometry (DNA, RNA) : Parkinson et al. (1996)
Validation Pipeline (wwPDB-VP) : 2.40

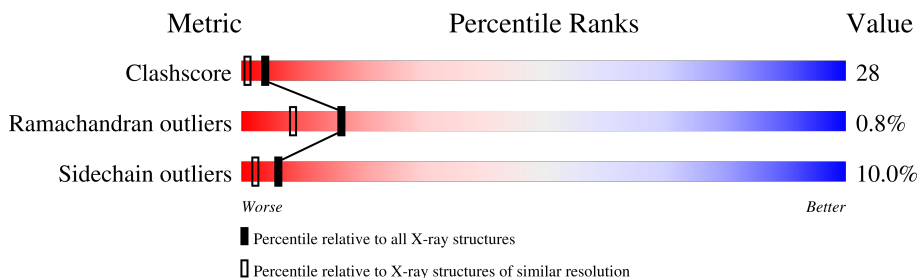
1 Overall quality at a glance

The following experimental techniques were used to determine the structure:

X-RAY DIFFRACTION

The reported resolution of this entry is 1.90 Å.

Percentile scores (ranging between 0-100) for global validation metrics of the entry are shown in the following graphic. The table shows the number of entries on which the scores are based.



Metric	Whole archive (#Entries)	Similar resolution (#Entries, resolution range(Å))
Clashscore	180529	8090 (1.90-1.90)
Ramachandran outliers	177936	8022 (1.90-1.90)
Sidechain outliers	177891	8022 (1.90-1.90)

The table below summarises the geometric issues observed across the polymeric chains and their fit to the electron density. The red, orange, yellow and green segments of the lower bar indicate the fraction of residues that contain outliers for ≥ 3 , 2, 1 and 0 types of geometric quality criteria respectively. A grey segment represents the fraction of residues that are not modelled. The numeric value for each fraction is indicated below the corresponding segment, with a dot representing fractions $\leq 5\%$.

Note EDS was not executed.

Mol	Chain	Length	Quality of chain
1	A	128	<div> <div>77%</div> <div>21%</div> <div>.</div> </div>
1	B	128	<div> <div>54%</div> <div>38%</div> <div>7%</div> <div>.</div> </div>
1	C	128	<div> <div>54%</div> <div>34%</div> <div>12%</div> </div>
1	D	128	<div> <div>72%</div> <div>22%</div> <div>6%</div> </div>

2 Entry composition

There are 4 unique types of molecules in this entry. The entry contains 4366 atoms, of which 0 are hydrogens and 0 are deuteriums.

In the tables below, the ZeroOcc column contains the number of atoms modelled with zero occupancy, the AltConf column contains the number of residues with at least one atom in alternate conformation and the Trace column contains the number of residues modelled with at most 2 atoms.

- Molecule 1 is a protein called Azurin.

Mol	Chain	Residues	Atoms					ZeroOcc	AltConf	Trace
1	A	128	Total	C	N	O	S	0	0	0
			972	607	164	192	9			
1	B	128	Total	C	N	O	S	0	2	0
			978	611	166	192	9			
1	C	128	Total	C	N	O	S	0	2	0
			985	614	167	195	9			
1	D	128	Total	C	N	O	S	0	1	0
			977	610	166	192	9			

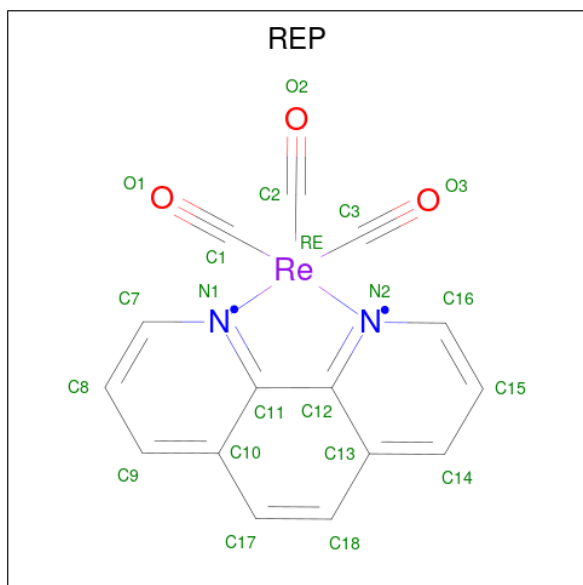
There are 20 discrepancies between the modelled and reference sequences:

Chain	Residue	Modelled	Actual	Comment	Reference
A	48	PHE	TRP	engineered mutation	UNP P00282
A	72	PHE	TYR	engineered mutation	UNP P00282
A	83	GLN	HIS	engineered mutation	UNP P00282
A	107	HIS	GLN	engineered mutation	UNP P00282
A	108	TRP	TYR	engineered mutation	UNP P00282
B	48	PHE	TRP	engineered mutation	UNP P00282
B	72	PHE	TYR	engineered mutation	UNP P00282
B	83	GLN	HIS	engineered mutation	UNP P00282
B	107	HIS	GLN	engineered mutation	UNP P00282
B	108	TRP	TYR	engineered mutation	UNP P00282
C	48	PHE	TRP	engineered mutation	UNP P00282
C	72	PHE	TYR	engineered mutation	UNP P00282
C	83	GLN	HIS	engineered mutation	UNP P00282
C	107	HIS	GLN	engineered mutation	UNP P00282
C	108	TRP	TYR	engineered mutation	UNP P00282
D	48	PHE	TRP	engineered mutation	UNP P00282
D	72	PHE	TYR	engineered mutation	UNP P00282
D	83	GLN	HIS	engineered mutation	UNP P00282
D	107	HIS	GLN	engineered mutation	UNP P00282
D	108	TRP	TYR	engineered mutation	UNP P00282

- Molecule 2 is COPPER (I) ION (three-letter code: CU1) (formula: Cu).

Mol	Chain	Residues	Atoms		ZeroOcc	AltConf
2	A	1	Total	Cu	0	0
			1	1		
2	B	1	Total	Cu	0	0
			1	1		
2	C	1	Total	Cu	0	0
			1	1		
2	D	1	Total	Cu	0	0
			1	1		

- Molecule 3 is (1,10 PHENANTHROLINE)-(TRI-CARBON MONOXIDE) RHENIUM (I) (three-letter code: REP) (formula: C₁₅H₈N₂O₃Re).



Mol	Chain	Residues	Atoms					ZeroOcc	AltConf
3	A	1	Total	C	N	O	Re	0	0
			21	15	2	3	1		
3	B	1	Total	C	N	O	Re	0	1
			42	30	4	6	2		
3	C	1	Total	C	N	O	Re	0	1
			42	30	4	6	2		
3	D	1	Total	C	N	O	Re	0	1
			42	30	4	6	2		

- Molecule 4 is water.


Mol	Chain	Residues	Atoms		ZeroOcc	AltConf
4	A	85	Total 85	O 85	0	0
4	B	86	Total 86	O 86	0	0
4	C	58	Total 58	O 58	0	0
4	D	74	Total 74	O 74	0	0

3 Residue-property plots

These plots are drawn for all protein, RNA, DNA and oligosaccharide chains in the entry. The first graphic for a chain summarises the proportions of the various outlier classes displayed in the second graphic. The second graphic shows the sequence view annotated by issues in geometry. Residues are color-coded according to the number of geometric quality criteria for which they contain at least one outlier: green = 0, yellow = 1, orange = 2 and red = 3 or more. Stretches of 2 or more consecutive residues without any outlier are shown as a green connector. Residues present in the sample, but not in the model, are shown in grey.

Note EDS was not executed.

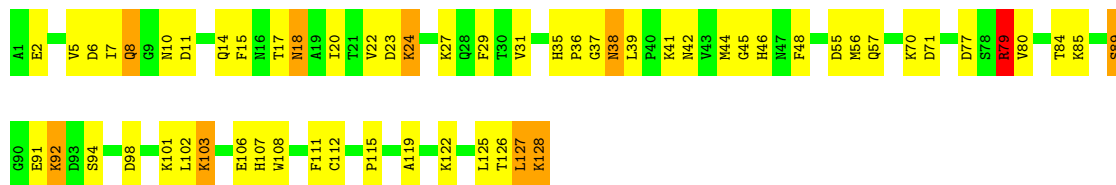
• Molecule 1: Azurin

Chain A: 



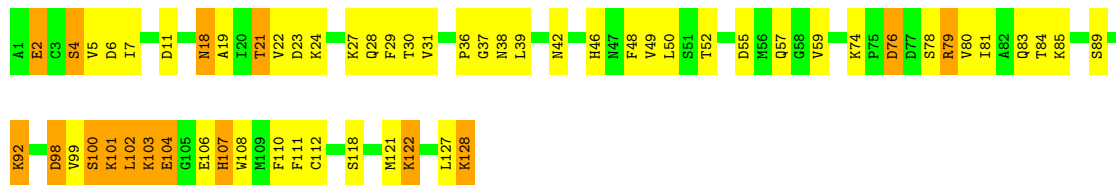
• Molecule 1: Azurin

Chain B: 



• Molecule 1: Azurin

Chain C: 



• Molecule 1: Azurin

Chain D: 



4 Data and refinement statistics

Xtriage (Phenix) and EDS were not executed - this section is therefore incomplete.

Property	Value	Source
Space group	P 1 21 1	Depositor
Cell constants a, b, c, α , β , γ	58.95Å 56.93Å 77.30Å 90.00° 98.37° 90.00°	Depositor
Resolution (Å)	40.00 – 1.90	Depositor
% Data completeness (in resolution range)	100.0 (40.00-1.90)	Depositor
R_{merge}	(Not available)	Depositor
R_{sym}	0.07	Depositor
Refinement program	SHELXL-97	Depositor
R, R_{free}	0.224 , 0.260	Depositor
Estimated twinning fraction	No twinning to report.	Xtriage
Total number of atoms	4366	wwPDB-VP
Average B, all atoms (Å ²)	34.0	wwPDB-VP

5 Model quality [i](#)

5.1 Standard geometry [i](#)

Bond lengths and bond angles in the following residue types are not validated in this section: REP, CU1

The Z score for a bond length (or angle) is the number of standard deviations the observed value is removed from the expected value. A bond length (or angle) with $|Z| > 5$ is considered an outlier worth inspection. RMSZ is the root-mean-square of all Z scores of the bond lengths (or angles).

Mol	Chain	Bond lengths		Bond angles	
		RMSZ	$\# Z > 5$	RMSZ	$\# Z > 5$
1	A	0.51	1/989 (0.1%)	1.14	0/1331
1	B	0.48	1/1008 (0.1%)	1.26	4/1356 (0.3%)
1	C	0.48	1/1008 (0.1%)	1.37	6/1357 (0.4%)
1	D	0.49	1/1000 (0.1%)	1.18	2/1346 (0.1%)
All	All	0.49	4/4005 (0.1%)	1.24	12/5390 (0.2%)

All (4) bond length outliers are listed below:

Mol	Chain	Res	Type	Atoms	Z	Observed(Å)	Ideal(Å)
1	A	2	GLU	CD-OE2	7.80	1.34	1.25
1	D	2	GLU	CD-OE2	7.28	1.33	1.25
1	B	2	GLU	CD-OE2	7.18	1.33	1.25
1	C	2	GLU	CD-OE2	6.88	1.33	1.25

The worst 5 of 12 bond angle outliers are listed below:

Mol	Chain	Res	Type	Atoms	Z	Observed(°)	Ideal(°)
1	C	102	LEU	C-N-CA	14.91	158.97	121.70
1	B	79	ARG	NE-CZ-NH1	13.13	126.86	120.30
1	B	79	ARG	NE-CZ-NH2	-11.35	114.62	120.30
1	C	107[A]	HIS	CA-CB-CG	8.37	127.83	113.60
1	C	107[B]	HIS	CA-CB-CG	8.37	127.83	113.60

There are no chirality outliers.

There are no planarity outliers.

5.2 Too-close contacts ⓘ

In the following table, the Non-H and H(model) columns list the number of non-hydrogen atoms and hydrogen atoms in the chain respectively. The H(added) column lists the number of hydrogen atoms added and optimized by MolProbity. The Clashes column lists the number of clashes within the asymmetric unit, whereas Symm-Clashes lists symmetry-related clashes.

Mol	Chain	Non-H	H(model)	H(added)	Clashes	Symm-Clashes
1	A	972	0	952	37	0
1	B	978	0	952	79	0
1	C	985	0	957	56	0
1	D	977	0	955	47	0
2	A	1	0	0	0	0
2	B	1	0	0	0	0
2	C	1	0	0	0	0
2	D	1	0	0	0	0
3	A	21	0	8	2	0
3	B	42	0	16	5	0
3	C	42	0	16	3	0
3	D	42	0	16	0	0
4	A	85	0	0	5	1
4	B	86	0	0	7	0
4	C	58	0	0	6	0
4	D	74	0	0	10	1
All	All	4366	0	3872	217	1

The all-atom clashscore is defined as the number of clashes found per 1000 atoms (including hydrogen atoms). The all-atom clashscore for this structure is 28.

The worst 5 of 217 close contacts within the same asymmetric unit are listed below, sorted by their clash magnitude.

Atom-1	Atom-2	Interatomic distance (Å)	Clash overlap (Å)
1:B:77:ASP:OD1	1:B:79:ARG:HD3	1.47	1.13
1:D:13:MET:H	1:D:44:MET:HE1	1.23	1.03
1:A:42:ASN:N	1:A:42:ASN:HD22	1.55	1.02
1:A:7:ILE:HD13	1:A:31:VAL:HG13	1.37	1.01
1:B:24:LYS:HE2	1:B:24:LYS:O	1.59	1.01

All (1) symmetry-related close contacts are listed below. The label for Atom-2 includes the symmetry operator and encoded unit-cell translations to be applied.

Atom-1	Atom-2	Interatomic distance (Å)	Clash overlap (Å)
4:A:1140:HOH:O	4:D:1156:HOH:O[2_756]	2.07	0.13

5.3 Torsion angles [i](#)

5.3.1 Protein backbone [i](#)

In the following table, the Percentiles column shows the percent Ramachandran outliers of the chain as a percentile score with respect to all X-ray entries followed by that with respect to entries of similar resolution.

The Analysed column shows the number of residues for which the backbone conformation was analysed, and the total number of residues.

Mol	Chain	Analysed	Favoured	Allowed	Outliers	Percentiles	
1	A	126/128 (98%)	122 (97%)	3 (2%)	1 (1%)	16	8
1	B	128/128 (100%)	123 (96%)	4 (3%)	1 (1%)	16	8
1	C	128/128 (100%)	119 (93%)	7 (6%)	2 (2%)	8	2
1	D	127/128 (99%)	124 (98%)	3 (2%)	0	100	100
All	All	509/512 (99%)	488 (96%)	17 (3%)	4 (1%)	16	8

All (4) Ramachandran outliers are listed below:

Mol	Chain	Res	Type
1	C	104	GLU
1	A	100	SER
1	C	76	ASP
1	B	127	LEU

5.3.2 Protein sidechains [i](#)

In the following table, the Percentiles column shows the percent sidechain outliers of the chain as a percentile score with respect to all X-ray entries followed by that with respect to entries of similar resolution.

The Analysed column shows the number of residues for which the sidechain conformation was analysed, and the total number of residues.

Mol	Chain	Analysed	Rotameric	Outliers	Percentiles	
1	A	110/110 (100%)	104 (94%)	6 (6%)	18	10
1	B	112/110 (102%)	100 (89%)	12 (11%)	5	2

Continued on next page...

Continued from previous page...

Mol	Chain	Analysed	Rotameric	Outliers	Percentiles	
1	C	112/110 (102%)	94 (84%)	18 (16%)	2	0
1	D	111/110 (101%)	102 (92%)	9 (8%)	9	4
All	All	445/440 (101%)	400 (90%)	45 (10%)	6	2

5 of 45 residues with a non-rotameric sidechain are listed below:

Mol	Chain	Res	Type
1	C	98[B]	ASP
1	C	128	LYS
1	C	100	SER
1	C	103	LYS
1	D	24	LYS

Sometimes sidechains can be flipped to improve hydrogen bonding and reduce clashes. 5 of 12 such sidechains are listed below:

Mol	Chain	Res	Type
1	C	18	ASN
1	C	83	GLN
1	D	83	GLN
1	D	35	HIS
1	B	18	ASN

5.3.3 RNA [i](#)

There are no RNA molecules in this entry.

5.4 Non-standard residues in protein, DNA, RNA chains [i](#)

There are no non-standard protein/DNA/RNA residues in this entry.

5.5 Carbohydrates [i](#)

There are no oligosaccharides in this entry.

5.6 Ligand geometry [i](#)

Of 11 ligands modelled in this entry, 4 are monoatomic - leaving 7 for Mogul analysis.

In the following table, the Counts columns list the number of bonds (or angles) for which Mogul statistics could be retrieved, the number of bonds (or angles) that are observed in the model and the number of bonds (or angles) that are defined in the Chemical Component Dictionary. The Link column lists molecule types, if any, to which the group is linked. The Z score for a bond length (or angle) is the number of standard deviations the observed value is removed from the expected value. A bond length (or angle) with $|Z| > 2$ is considered an outlier worth inspection. RMSZ is the root-mean-square of all Z scores of the bond lengths (or angles).

Mol	Type	Chain	Res	Link	Bond lengths			Bond angles		
					Counts	RMSZ	$\# Z > 2$	Counts	RMSZ	$\# Z > 2$
3	REP	D	804[A]	1	17,24,24	0.84	0	20,39,39	0.57	0
3	REP	D	804[B]	1	17,24,24	0.86	0	20,39,39	0.58	0
3	REP	C	803[B]	1	17,24,24	0.85	0	20,39,39	0.60	0
3	REP	C	803[A]	1	17,24,24	0.86	0	20,39,39	0.58	0
3	REP	B	802[A]	1	17,24,24	0.86	0	20,39,39	0.57	0
3	REP	A	801	1	17,24,24	0.84	0	20,39,39	0.59	0
3	REP	B	802[B]	1	17,24,24	0.87	0	20,39,39	0.59	0

In the following table, the Chirals column lists the number of chiral outliers, the number of chiral centers analysed, the number of these observed in the model and the number defined in the Chemical Component Dictionary. Similar counts are reported in the Torsion and Rings columns. '-' means no outliers of that kind were identified.

Mol	Type	Chain	Res	Link	Chirals	Torsions	Rings
3	REP	D	804[A]	1	-	-	0/4/4/4
3	REP	D	804[B]	1	-	-	0/4/4/4
3	REP	C	803[B]	1	-	-	0/4/4/4
3	REP	C	803[A]	1	-	-	0/4/4/4
3	REP	B	802[A]	1	-	-	0/4/4/4
3	REP	A	801	1	-	-	0/4/4/4
3	REP	B	802[B]	1	-	-	0/4/4/4

There are no bond length outliers.

There are no bond angle outliers.

There are no chirality outliers.

There are no torsion outliers.

There are no ring outliers.

4 monomers are involved in 10 short contacts:

Mol	Chain	Res	Type	Clashes	Symm-Clashes
3	C	803[A]	REP	3	0
3	B	802[A]	REP	2	0

Continued on next page...

Continued from previous page...

Mol	Chain	Res	Type	Clashes	Symm-Clashes
3	A	801	REP	2	0
3	B	802[B]	REP	3	0

5.7 Other polymers [i](#)

There are no such residues in this entry.

5.8 Polymer linkage issues [i](#)

There are no chain breaks in this entry.

6 Fit of model and data [i](#)

6.1 Protein, DNA and RNA chains [i](#)

EDS was not executed - this section is therefore empty.

6.2 Non-standard residues in protein, DNA, RNA chains [i](#)

EDS was not executed - this section is therefore empty.

6.3 Carbohydrates [i](#)

EDS was not executed - this section is therefore empty.

6.4 Ligands [i](#)

EDS was not executed - this section is therefore empty.

6.5 Other polymers [i](#)

EDS was not executed - this section is therefore empty.