



## wwPDB EM Validation Summary Report ⓘ

Jun 25, 2025 – 08:03 am BST

PDB ID : 8RAM / pdb\_00008ram  
EMDB ID : EMD-19019  
Title : Structure of Sen1 bound RNA Polymerase II pre-termination complex  
Authors : Rengachari, S.; Lidsreiber, M.; Cramer, P.  
Deposited on : 2023-12-01  
Resolution : 2.80 Å(reported)  
Based on initial models : ?, 6I59, 7NKX, 2XZO

This is a wwPDB EM Validation Summary Report for a publicly released PDB entry.

We welcome your comments at [validation@mail.wwpdb.org](mailto:validation@mail.wwpdb.org)

A user guide is available at

<https://www.wwpdb.org/validation/2017/EMValidationReportHelp>  
with specific help available everywhere you see the ⓘ symbol.

The types of validation reports are described at

<http://www.wwpdb.org/validation/2017/FAQs#types>.

---

The following versions of software and data (see [references ⓘ](#)) were used in the production of this report:

EMDB validation analysis : 0.0.1.dev118  
MolProbity : 4-5-2 with Phenix2.0rc1  
Percentile statistics : 20231227.v01 (using entries in the PDB archive December 27th 2023)  
MapQ : 1.9.13  
Ideal geometry (proteins) : Engh & Huber (2001)  
Ideal geometry (DNA, RNA) : Parkinson et al. (1996)  
Validation Pipeline (wwPDB-VP) : 2.44

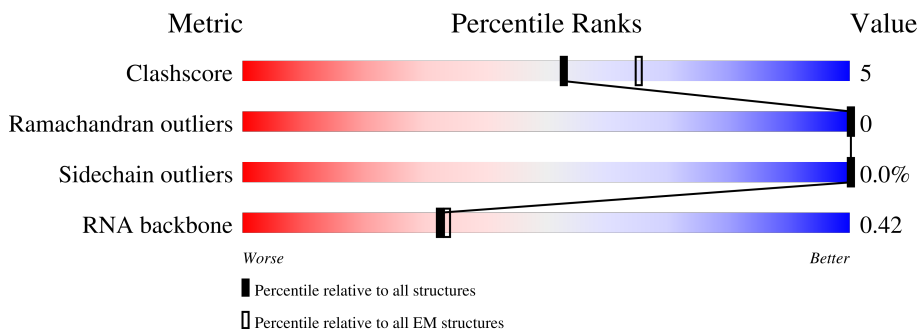
# 1 Overall quality at a glance

The following experimental techniques were used to determine the structure:

*ELECTRON MICROSCOPY*

The reported resolution of this entry is 2.80 Å.

Percentile scores (ranging between 0-100) for global validation metrics of the entry are shown in the following graphic. The table shows the number of entries on which the scores are based.













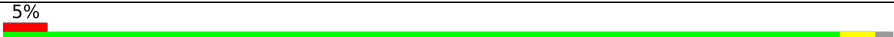

Metric	Whole archive (#Entries)	EM structures (#Entries)
Clashscore	210492	15764
Ramachandran outliers	207382	16835
Sidechain outliers	206894	16415
RNA backbone	6643	2191

The table below summarises the geometric issues observed across the polymeric chains and their fit to the map. The red, orange, yellow and green segments of the bar indicate the fraction of residues that contain outliers for  $\geq 3$ , 2, 1 and 0 types of geometric quality criteria respectively. A grey segment represents the fraction of residues that are not modelled. The numeric value for each fraction is indicated below the corresponding segment, with a dot representing fractions  $\leq 5\%$ . The upper red bar (where present) indicates the fraction of residues that have poor fit to the EM map (all-atom inclusion  $< 40\%$ ). The numeric value is given above the bar.

Mol	Chain	Length	Quality of chain
1	A	1733	
2	B	1224	
3	C	318	
4	D	221	
5	E	215	
6	F	155	
7	G	171	

Continued on next page...

*Continued from previous page...*

Mol	Chain	Length	Quality of chain
8	H	146	
9	I	122	
10	J	70	
11	K	120	
12	L	70	
13	M	145	
14	N	58	
15	O	2231	
16	P	35	
17	T	58	
18	Y	102	
19	Z	1063	

## 2 Entry composition

There are 21 unique types of molecules in this entry. The entry contains 42965 atoms, of which 0 are hydrogens and 0 are deuteriums.

In the tables below, the AltConf column contains the number of residues with at least one atom in alternate conformation and the Trace column contains the number of residues modelled with at most 2 atoms.

- Molecule 1 is a protein called DNA-directed RNA polymerase II subunit RPB1.

Mol	Chain	Residues	Atoms					AltConf	Trace
1	A	1400	Total	C	N	O	S	0	0
			11020	6948	1929	2081	62		

- Molecule 2 is a protein called DNA-directed RNA polymerase II subunit RPB2.

Mol	Chain	Residues	Atoms					AltConf	Trace
2	B	1113	Total	C	N	O	S	0	0
			8839	5596	1553	1635	55		

- Molecule 3 is a protein called DNA-directed RNA polymerase II subunit RPB3.

Mol	Chain	Residues	Atoms					AltConf	Trace
3	C	264	Total	C	N	O	S	0	0
			2078	1308	346	411	13		

- Molecule 4 is a protein called DNA-directed RNA polymerase II subunit RPB4.

Mol	Chain	Residues	Atoms					AltConf	Trace
4	D	159	Total	C	N	O	S	0	0
			1270	788	223	257	2		

- Molecule 5 is a protein called DNA-directed RNA polymerases I, II, and III subunit RPABC1.

Mol	Chain	Residues	Atoms					AltConf	Trace
5	E	214	Total	C	N	O	S	0	0
			1752	1111	309	321	11		

- Molecule 6 is a protein called DNA-directed RNA polymerases I, II, and III subunit RPABC2.

Mol	Chain	Residues	Atoms					AltConf	Trace
6	F	85	Total	C	N	O	S	0	0
			688	439	116	130	3		

- Molecule 7 is a protein called DNA-directed RNA polymerase II subunit RPB7.

Mol	Chain	Residues	Atoms					AltConf	Trace
7	G	171	Total	C	N	O	S	0	0
			1340	861	222	249	8		

- Molecule 8 is a protein called DNA-directed RNA polymerases I, II, and III subunit RPABC3.

Mol	Chain	Residues	Atoms					AltConf	Trace
8	H	133	Total	C	N	O	S	0	0
			1068	673	180	211	4		

- Molecule 9 is a protein called DNA-directed RNA polymerase II subunit RPB9.

Mol	Chain	Residues	Atoms					AltConf	Trace
9	I	118	Total	C	N	O	S	0	0
			964	592	178	184	10		

- Molecule 10 is a protein called DNA-directed RNA polymerases I, II, and III subunit RPABC5.

Mol	Chain	Residues	Atoms					AltConf	Trace
10	J	65	Total	C	N	O	S	0	0
			532	339	93	94	6		

- Molecule 11 is a protein called DNA-directed RNA polymerase II subunit RPB11.

Mol	Chain	Residues	Atoms					AltConf	Trace
11	K	115	Total	C	N	O	S	0	1
			920	590	157	171	2		

- Molecule 12 is a protein called DNA-directed RNA polymerases I, II, and III subunit RPABC4.

Mol	Chain	Residues	Atoms					AltConf	Trace
12	L	43	Total	C	N	O	S	0	0
			343	211	69	59	4		

- Molecule 13 is a protein called Transcription elongation factor 1.

Mol	Chain	Residues	Atoms					AltConf	Trace
13	M	65	Total	C	N	O	S	0	0
			504	311	87	101	5		

- Molecule 14 is a DNA chain called Non-template strand.

Mol	Chain	Residues	Atoms					AltConf	Trace
14	N	27	Total	C	N	O	P	0	0
			547	262	98	160	27		

- Molecule 15 is a protein called Helicase SEN1.

Mol	Chain	Residues	Atoms					AltConf	Trace
15	O	690	Total	C	N	O	S	0	0
			5523	3491	963	1038	31		

- Molecule 16 is a RNA chain called RNA.

Mol	Chain	Residues	Atoms					AltConf	Trace
16	P	29	Total	C	N	O	P	0	0
			624	278	116	201	29		

- Molecule 17 is a DNA chain called Template strand.

Mol	Chain	Residues	Atoms					AltConf	Trace
17	T	38	Total	C	N	O	P	0	0
			786	374	142	232	38		

- Molecule 18 is a protein called Transcription elongation factor SPT4.

Mol	Chain	Residues	Atoms					AltConf	Trace
18	Y	100	Total	C	N	O	S	0	0
			760	474	129	147	10		

- Molecule 19 is a protein called Transcription elongation factor SPT5.

Mol	Chain	Residues	Atoms					AltConf	Trace
19	Z	429	Total	C	N	O	S	0	0
			3397	2150	605	633	9		

- Molecule 20 is ZINC ION (CCD ID: ZN) (formula: Zn) (labeled as "Ligand of Interest" by depositor).

Mol	Chain	Residues	Atoms		AltConf
20	A	2	Total	Zn	0
			2	2	
20	B	1	Total	Zn	0
			1	1	

*Continued on next page...*

*Continued from previous page...*

Mol	Chain	Residues	Atoms		AltConf
20	C	1	Total 1	Zn 1	0
20	I	2	Total 2	Zn 2	0
20	J	1	Total 1	Zn 1	0
20	L	1	Total 1	Zn 1	0
20	M	1	Total 1	Zn 1	0

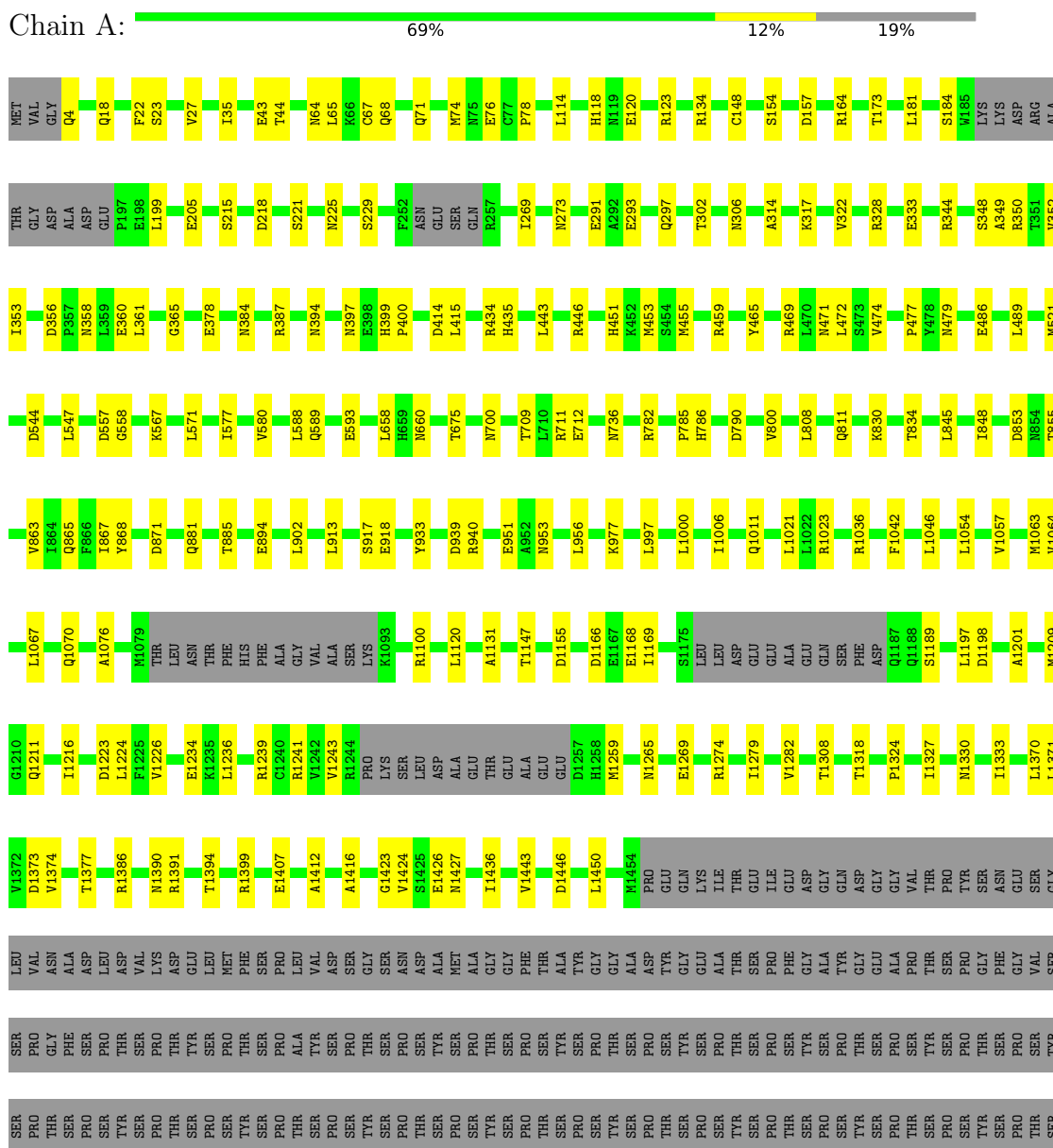
- Molecule 21 is MAGNESIUM ION (CCD ID: MG) (formula: Mg) (labeled as "Ligand of Interest" by depositor).

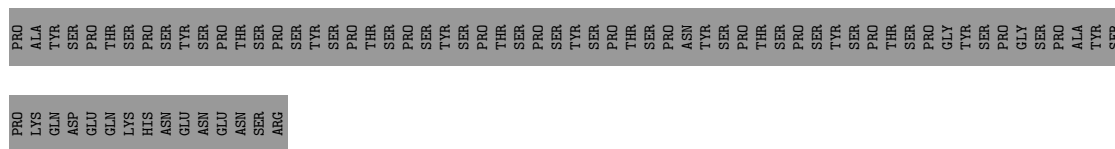
Mol	Chain	Residues	Atoms		AltConf
21	A	1	Total 1	Mg 1	0

### 3 Residue-property plots

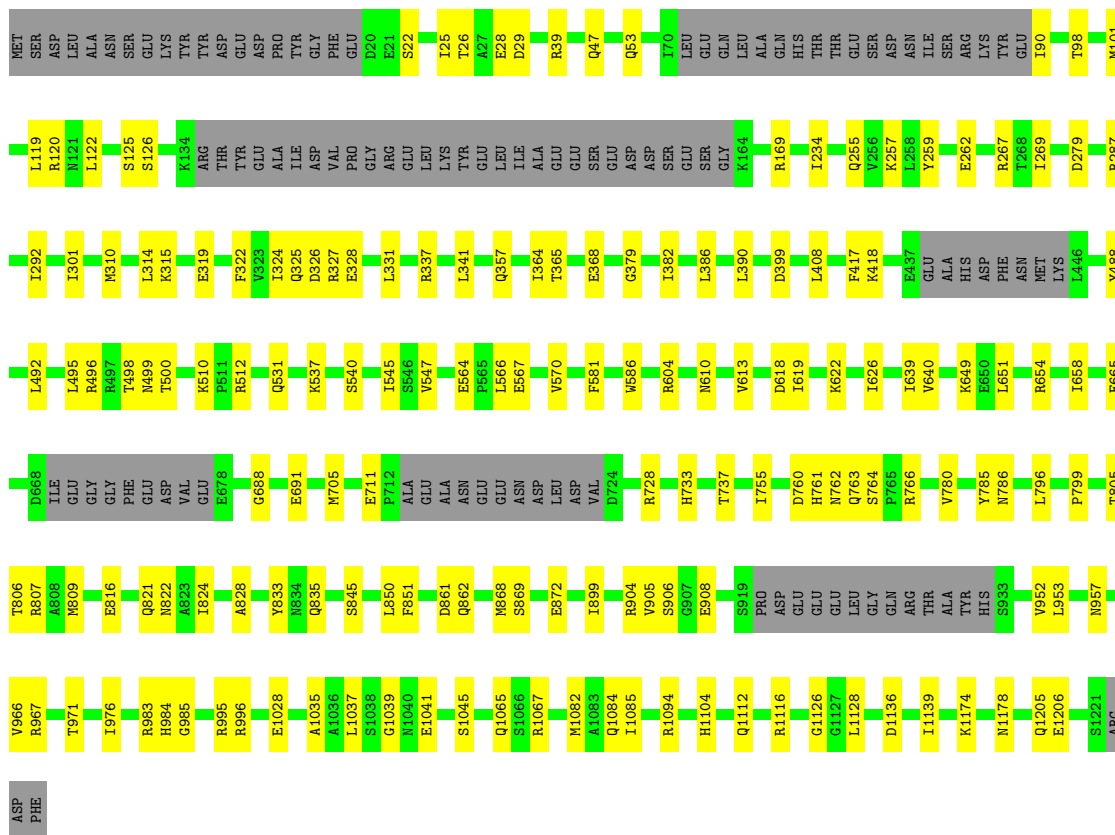
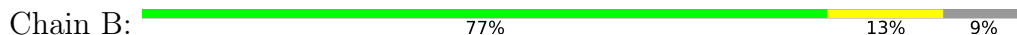
These plots are drawn for all protein, RNA, DNA and oligosaccharide chains in the entry. The first graphic for a chain summarises the proportions of the various outlier classes displayed in the second graphic. The second graphic shows the sequence view annotated by issues in geometry and atom inclusion in map density. Residues are color-coded according to the number of geometric quality criteria for which they contain at least one outlier: green = 0, yellow = 1, orange = 2 and red = 3 or more. A red diamond above a residue indicates a poor fit to the EM map for this residue (all-atom inclusion < 40%). Stretches of 2 or more consecutive residues without any outlier are shown as a green connector. Residues present in the sample, but not in the model, are shown in grey.

- Molecule 1: DNA-directed RNA polymerase II subunit RPB1

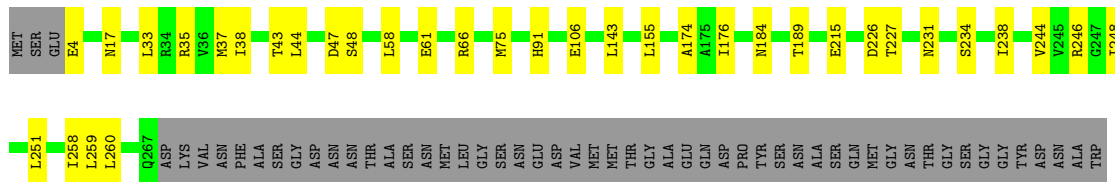




- Molecule 2: DNA-directed RNA polymerase II subunit RPB2

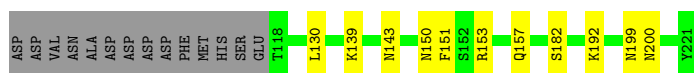


- Molecule 3: DNA-directed RNA polymerase II subunit RPB3

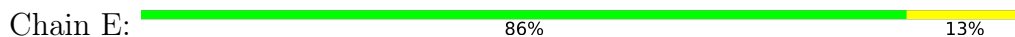


- Molecule 4: DNA-directed RNA polymerase II subunit RPB4

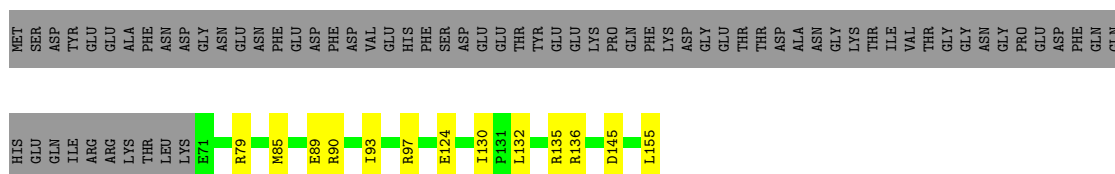




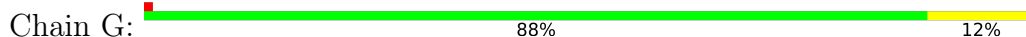
- Molecule 5: DNA-directed RNA polymerases I, II, and III subunit RPABC1



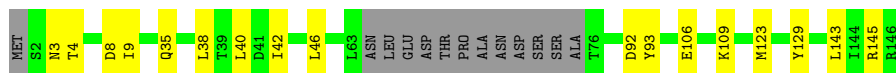
- Molecule 6: DNA-directed RNA polymerases I, II, and III subunit RPABC2



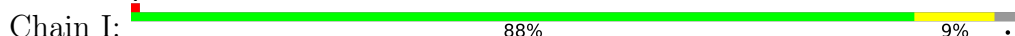
- Molecule 7: DNA-directed RNA polymerase II subunit RPB7



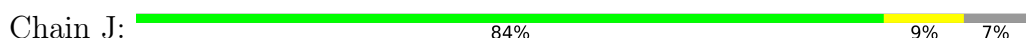
- Molecule 8: DNA-directed RNA polymerases I, II, and III subunit RPABC3



- Molecule 9: DNA-directed RNA polymerase II subunit RPB9



- Molecule 10: DNA-directed RNA polymerases I, II, and III subunit RPABC5




- Molecule 11: DNA-directed RNA polymerase II subunit RPB11

M1	L11	E36	K37	E38	D39	H40	T41	L42	R47	F58	H65	A69	R70	E79	C91	L98	G99	A100	N104	L111	A115	ALA	ASP	ASP	ALA	PHE
----	-----	-----	-----	-----	-----	-----	-----	-----	-----	-----	-----	-----	-----	-----	-----	-----	-----	------	------	------	------	-----	-----	-----	-----	-----

- Chain L:  54% 7% 39%

MET	ARG	GLU	GLY	PHE	GLN	ILE	PRO	THR	ASN	LEU	ASP	ALA	ALA	ALA	ALA	GLY	THR	SER	SER	GLN	ALA	ARG	THR	ALA	ALA	THR	LEU	R28	L40	L56	V65	Q66	R70
-----	-----	-----	-----	-----	-----	-----	-----	-----	-----	-----	-----	-----	-----	-----	-----	-----	-----	-----	-----	-----	-----	-----	-----	-----	-----	-----	-----	-----	-----	-----	-----	-----	-----

- Chain M: 

LYS	THR	GLN	ASN	ASP	GLY	ILE	ASP	SER	ASP	GLU	GLU	VAL	ASP	SER	ASP	GLU	GLU	ARG	ILE	GLY	VAL	LYS	ARG	GLY	ARG	GLY	ALA	LEU	VAL	ASP	SER	ASP	ASP	ASP	GLU																		
MET	GLY	ARG	LYS	LYS	SER	THR	THR	ARG	LYS	PRO	THR	LYS	ARG	LEU	VAL	GLN	LYS	LEU	ASP	T21	V94	T37	L38	D39	N42	S43	T46	L47	Q65	R94	G95	SER	ASP	THR	ASP	GLY	ASP	ASP	GLU	GLY	GLY	SER	ASP	SER	ASP	TYR	GLU	SER	SER	SER	GLU	GLN	ASP

- Chain N:  45% . 53%

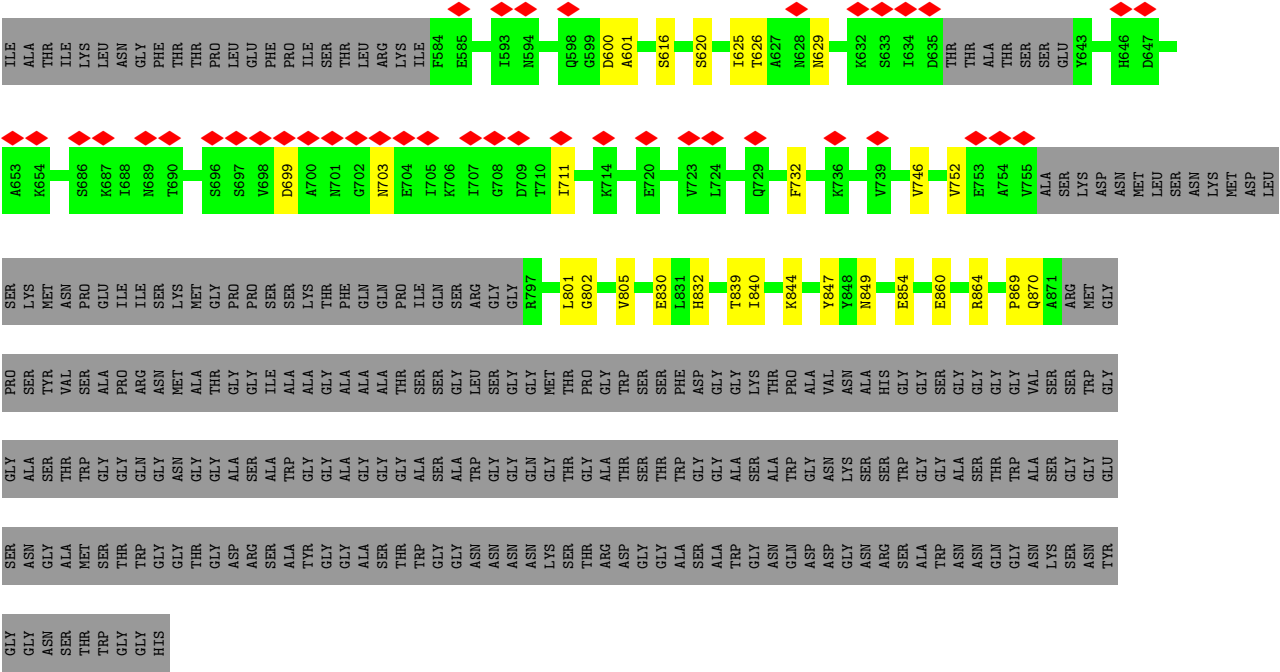
DC	DG	DG	DT	DT	DT	DG	DC	DC	DA	DT	DG	DT	DT	DA	DC	DC	DA	C16	T24	DA	DC	DC	DT	DT	DG	DA	DG	DG	DT	DT	DA	DG	C37	T45	C54	DT	DT	DG	DG	DC
----	----	----	----	----	----	----	----	----	----	----	----	----	----	----	----	----	----	-----	-----	----	----	----	----	----	----	----	----	----	----	----	----	----	-----	-----	-----	----	----	----	----	----

- Chain O:  28% . 69%

[illegible]







## 4 Experimental information

Property	Value	Source
EM reconstruction method	SINGLE PARTICLE	Depositor
Imposed symmetry	POINT, Not provided	
Number of particles used	95644	Depositor
Resolution determination method	FSC 0.143 CUT-OFF	Depositor
CTF correction method	PHASE FLIPPING AND AMPLITUDE CORRECTION	Depositor
Microscope	FEI TITAN KRIOS	Depositor
Voltage (kV)	300	Depositor
Electron dose ( $e^-/\text{\AA}^2$ )	40.02	Depositor
Minimum defocus (nm)	500	Depositor
Maximum defocus (nm)	3000	Depositor
Magnification	Not provided	
Image detector	GATAN K3 BIOQUANTUM (6k x 4k)	Depositor
Maximum map value	0.166	Depositor
Minimum map value	-0.057	Depositor
Average map value	-0.000	Depositor
Map value standard deviation	0.004	Depositor
Recommended contour level	0.006	Depositor
Map size (Å)	377.99997, 377.99997, 377.99997	wwPDB
Map dimensions	360, 360, 360	wwPDB
Map angles (°)	90.0, 90.0, 90.0	wwPDB
Pixel spacing (Å)	1.05, 1.05, 1.05	Depositor

## 5 Model quality

### 5.1 Standard geometry

Bond lengths and bond angles in the following residue types are not validated in this section: ZN, MG

The Z score for a bond length (or angle) is the number of standard deviations the observed value is removed from the expected value. A bond length (or angle) with  $|Z| > 5$  is considered an outlier worth inspection. RMSZ is the root-mean-square of all Z scores of the bond lengths (or angles).

Mol	Chain	Bond lengths		Bond angles	
		RMSZ	$\# Z  > 5$	RMSZ	$\# Z  > 5$
1	A	0.08	0/11217	0.21	0/15166
2	B	0.08	0/9011	0.22	0/12149
3	C	0.08	0/2116	0.21	0/2868
4	D	0.07	0/1279	0.19	0/1716
5	E	0.08	0/1788	0.21	0/2406
6	F	0.08	0/700	0.21	0/945
7	G	0.09	0/1368	0.20	0/1844
8	H	0.08	0/1086	0.23	0/1470
9	I	0.09	0/982	0.26	0/1321
10	J	0.11	0/541	0.23	0/727
11	K	0.10	0/938	0.20	0/1267
12	L	0.10	0/345	0.27	0/457
13	M	0.06	0/512	0.19	0/689
14	N	0.16	0/611	0.39	0/936
15	O	0.08	0/5625	0.20	0/7580
16	P	0.05	0/697	0.13	0/1083
17	T	0.17	0/881	0.43	0/1360
18	Y	0.09	0/776	0.19	0/1050
19	Z	0.08	0/3443	0.21	0/4632
All	All	0.09	0/43916	0.22	0/59666

There are no bond length outliers.

There are no bond angle outliers.

There are no chirality outliers.

There are no planarity outliers.

## 5.2 Too-close contacts ⓘ

In the following table, the Non-H and H(model) columns list the number of non-hydrogen atoms and hydrogen atoms in the chain respectively. The H(added) column lists the number of hydrogen atoms added and optimized by MolProbity. The Clashes column lists the number of clashes within the asymmetric unit, whereas Symm-Clashes lists symmetry-related clashes.

Mol	Chain	Non-H	H(model)	H(added)	Clashes	Symm-Clashes
1	A	11020	0	11104	151	0
2	B	8839	0	8896	114	0
3	C	2078	0	2041	26	0
4	D	1270	0	1287	12	0
5	E	1752	0	1776	19	0
6	F	688	0	707	8	0
7	G	1340	0	1357	13	0
8	H	1068	0	1040	15	0
9	I	964	0	922	9	0
10	J	532	0	542	5	0
11	K	920	0	929	15	0
12	L	343	0	363	4	0
13	M	504	0	480	6	0
14	N	547	0	306	1	0
15	O	5523	0	5555	39	0
16	P	624	0	315	1	0
17	T	786	0	431	13	0
18	Y	760	0	741	3	0
19	Z	3397	0	3506	29	0
20	A	2	0	0	0	0
20	B	1	0	0	0	0
20	C	1	0	0	0	0
20	I	2	0	0	0	0
20	J	1	0	0	0	0
20	L	1	0	0	0	0
20	M	1	0	0	0	0
21	A	1	0	0	0	0
All	All	42965	0	42298	431	0

The all-atom clashscore is defined as the number of clashes found per 1000 atoms (including hydrogen atoms). The all-atom clashscore for this structure is 5.

The worst 5 of 431 close contacts within the same asymmetric unit are listed below, sorted by their clash magnitude.

Atom-1	Atom-2	Interatomic distance (Å)	Clash overlap (Å)
1:A:956:LEU:HD13	1:A:1021:LEU:HD22	1.46	0.97
1:A:1424:VAL:HG22	1:A:1436:ILE:HD11	1.53	0.90
1:A:853:ASP:OD1	1:A:855:THR:OG1	1.95	0.83
19:Z:8:SER:HG	19:Z:11:THR:HG1	1.27	0.81
2:B:971:THR:OG1	3:C:61:GLU:OE1	2.00	0.80

There are no symmetry-related clashes.

## 5.3 Torsion angles [i](#)

### 5.3.1 Protein backbone [i](#)

In the following table, the Percentiles column shows the percent Ramachandran outliers of the chain as a percentile score with respect to all PDB entries followed by that with respect to all EM entries.

The Analysed column shows the number of residues for which the backbone conformation was analysed, and the total number of residues.

Mol	Chain	Analysed	Favoured	Allowed	Outliers	Percentiles	
1	A	1388/1733 (80%)	1350 (97%)	38 (3%)	0	100	100
2	B	1099/1224 (90%)	1070 (97%)	29 (3%)	0	100	100
3	C	262/318 (82%)	255 (97%)	7 (3%)	0	100	100
4	D	155/221 (70%)	152 (98%)	3 (2%)	0	100	100
5	E	212/215 (99%)	210 (99%)	2 (1%)	0	100	100
6	F	83/155 (54%)	81 (98%)	2 (2%)	0	100	100
7	G	169/171 (99%)	169 (100%)	0	0	100	100
8	H	129/146 (88%)	125 (97%)	4 (3%)	0	100	100
9	I	116/122 (95%)	113 (97%)	3 (3%)	0	100	100
10	J	63/70 (90%)	63 (100%)	0	0	100	100
11	K	113/120 (94%)	113 (100%)	0	0	100	100
12	L	41/70 (59%)	40 (98%)	1 (2%)	0	100	100
13	M	63/145 (43%)	63 (100%)	0	0	100	100
15	O	684/2231 (31%)	676 (99%)	8 (1%)	0	100	100
18	Y	98/102 (96%)	98 (100%)	0	0	100	100
19	Z	417/1063 (39%)	412 (99%)	5 (1%)	0	100	100

*Continued on next page...*

*Continued from previous page...*

Mol	Chain	Analysed	Favoured	Allowed	Outliers	Percentiles	
All	All	5092/8106 (63%)	4990 (98%)	102 (2%)	0	100	100

There are no Ramachandran outliers to report.

### 5.3.2 Protein sidechains ⓘ

In the following table, the Percentiles column shows the percent sidechain outliers of the chain as a percentile score with respect to all PDB entries followed by that with respect to all EM entries.

The Analysed column shows the number of residues for which the sidechain conformation was analysed, and the total number of residues.

Mol	Chain	Analysed	Rotameric	Outliers	Percentiles	
1	A	1225/1520 (81%)	1225 (100%)	0	100	100
2	B	964/1061 (91%)	963 (100%)	1 (0%)	92	98
3	C	232/274 (85%)	231 (100%)	1 (0%)	89	96
4	D	141/200 (70%)	141 (100%)	0	100	100
5	E	196/197 (100%)	196 (100%)	0	100	100
6	F	75/137 (55%)	75 (100%)	0	100	100
7	G	152/152 (100%)	152 (100%)	0	100	100
8	H	117/128 (91%)	117 (100%)	0	100	100
9	I	112/116 (97%)	112 (100%)	0	100	100
10	J	60/65 (92%)	60 (100%)	0	100	100
11	K	99/102 (97%)	99 (100%)	0	100	100
12	L	38/57 (67%)	38 (100%)	0	100	100
13	M	60/131 (46%)	60 (100%)	0	100	100
15	O	615/2010 (31%)	615 (100%)	0	100	100
18	Y	85/87 (98%)	85 (100%)	0	100	100
19	Z	376/876 (43%)	376 (100%)	0	100	100
All	All	4547/7113 (64%)	4545 (100%)	2 (0%)	100	100

All (2) residues with a non-rotameric sidechain are listed below:

Mol	Chain	Res	Type
2	B	764	SER

*Continued on next page...*

*Continued from previous page...*

Mol	Chain	Res	Type
3	C	4	GLU

Sometimes sidechains can be flipped to improve hydrogen bonding and reduce clashes. 5 of 27 such sidechains are listed below:

Mol	Chain	Res	Type
3	C	188	HIS
6	F	78	GLN
15	O	1710	ASN
4	D	37	GLN
7	G	57	GLN

### 5.3.3 RNA [i](#)

Mol	Chain	Analysed	Backbone Outliers	Pucker Outliers
16	P	27/35 (77%)	8 (29%)	0

5 of 8 RNA backbone outliers are listed below:

Mol	Chain	Res	Type
16	P	2	G
16	P	4	C
16	P	7	G
16	P	10	U
16	P	11	C

There are no RNA pucker outliers to report.

## 5.4 Non-standard residues in protein, DNA, RNA chains [i](#)

There are no non-standard protein/DNA/RNA residues in this entry.

## 5.5 Carbohydrates [i](#)

There are no oligosaccharides in this entry.

## 5.6 Ligand geometry [i](#)

Of 10 ligands modelled in this entry, 10 are monoatomic - leaving 0 for Mogul analysis.

There are no bond length outliers.

There are no bond angle outliers.

There are no chirality outliers.

There are no torsion outliers.

There are no ring outliers.

No monomer is involved in short contacts.

## 5.7 Other polymers [i](#)

There are no such residues in this entry.

## 5.8 Polymer linkage issues [i](#)

There are no chain breaks in this entry.

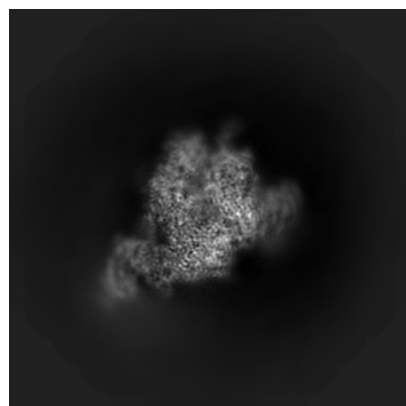
## 6 Map visualisation [i](#)

This section contains visualisations of the EMDB entry EMD-19019. These allow visual inspection of the internal detail of the map and identification of artifacts.

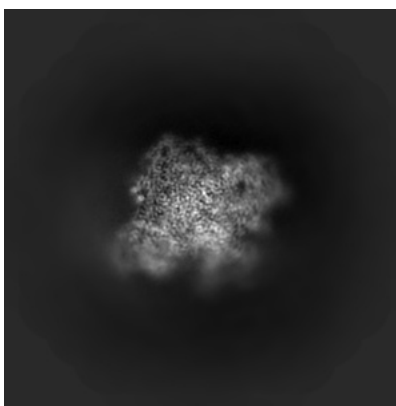
Images derived from a raw map, generated by summing the deposited half-maps, are presented below the corresponding image components of the primary map to allow further visual inspection and comparison with those of the primary map.

### 6.1 Orthogonal projections [i](#)

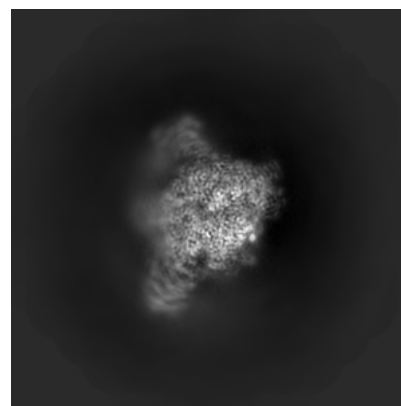
#### 6.1.1 Primary map



X

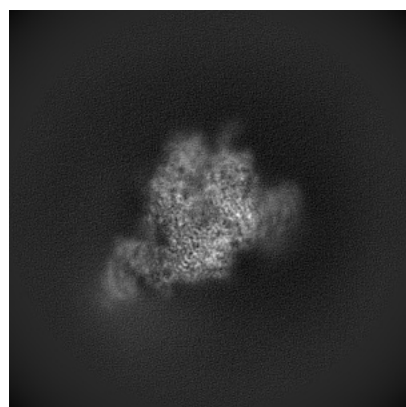


Y

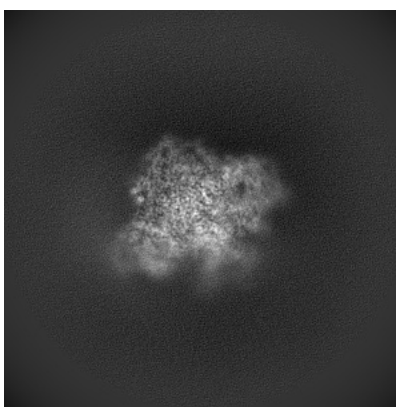


Z

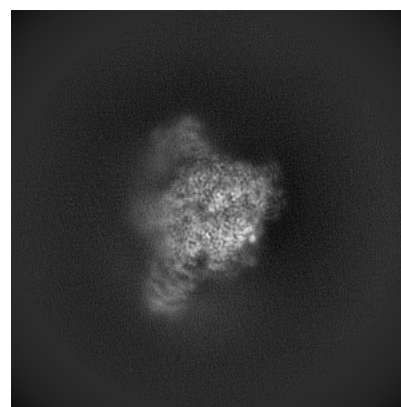
#### 6.1.2 Raw map



X



Y

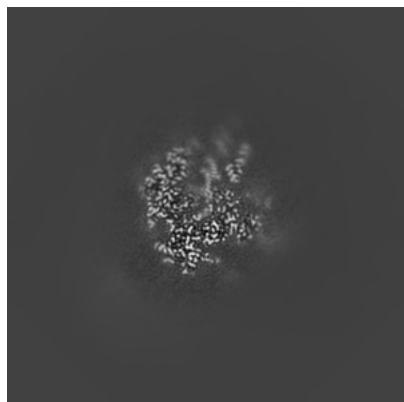


Z

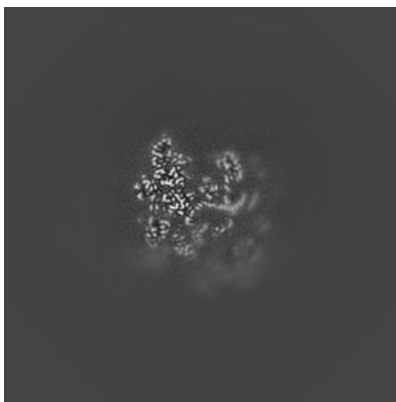
The images above show the map projected in three orthogonal directions.

## 6.2 Central slices [i](#)

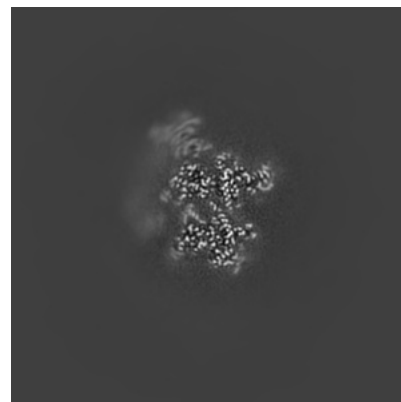
### 6.2.1 Primary map



X Index: 180

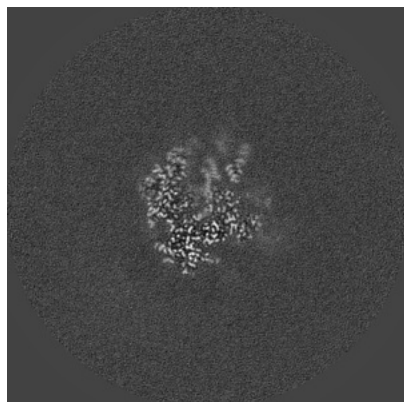


Y Index: 180

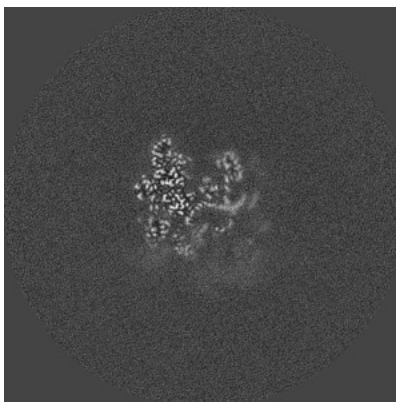


Z Index: 180

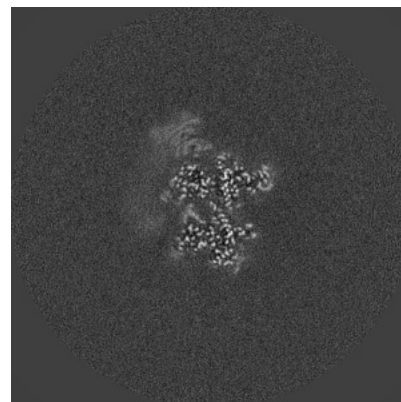
### 6.2.2 Raw map



X Index: 180



Y Index: 180

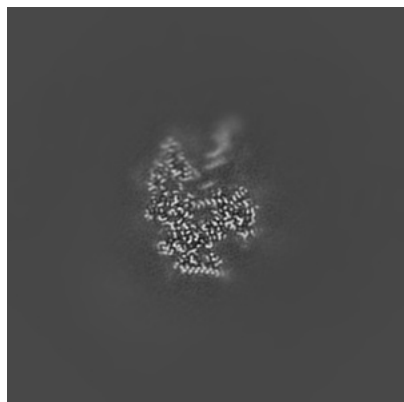


Z Index: 180

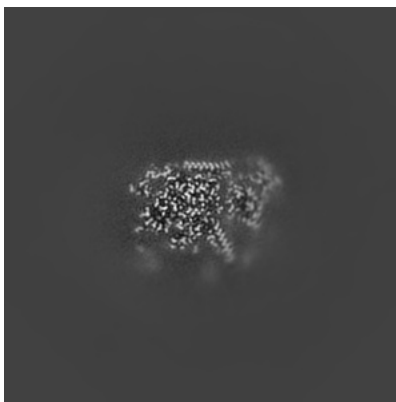
The images above show central slices of the map in three orthogonal directions.

## 6.3 Largest variance slices [i](#)

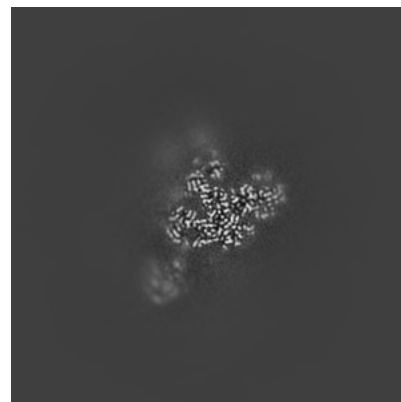
### 6.3.1 Primary map



X Index: 189

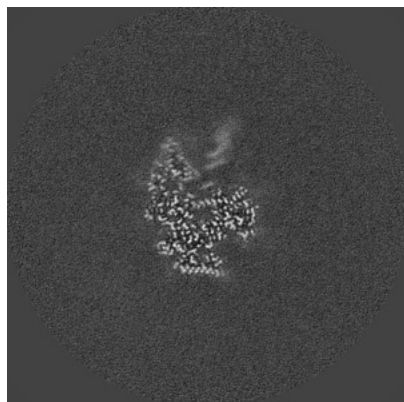


Y Index: 154

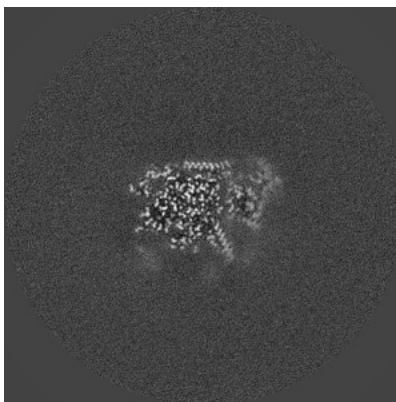


Z Index: 152

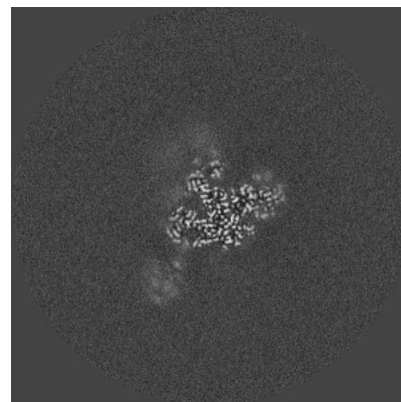
### 6.3.2 Raw map



X Index: 189



Y Index: 154

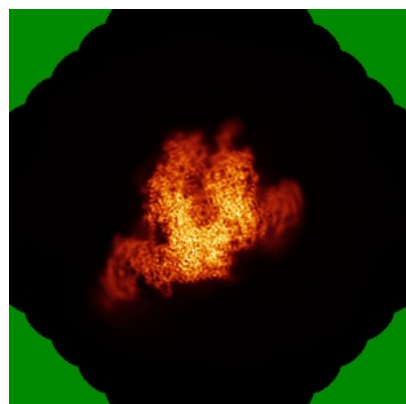


Z Index: 152

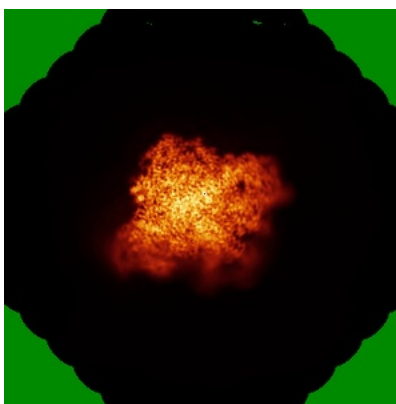
The images above show the largest variance slices of the map in three orthogonal directions.

## 6.4 Orthogonal standard-deviation projections (False-color) [i](#)

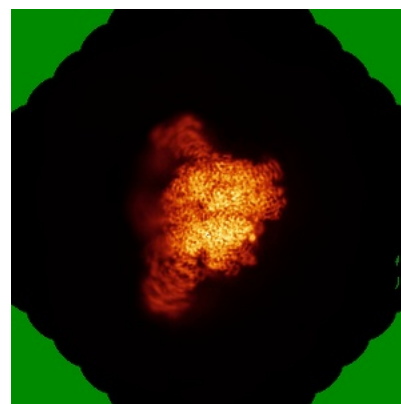
### 6.4.1 Primary map



X

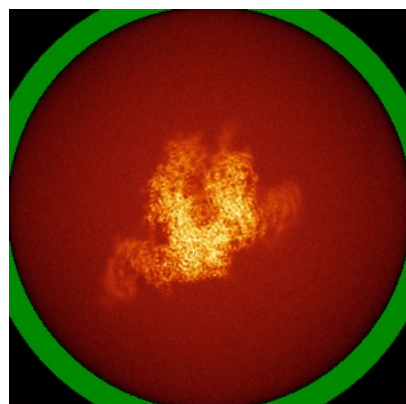


Y

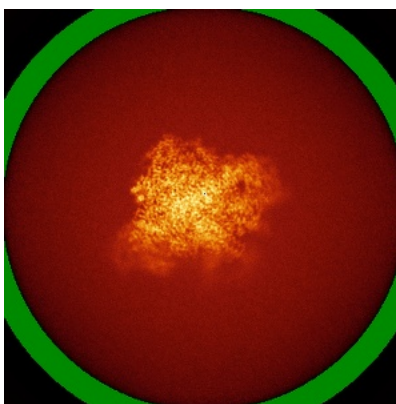


Z

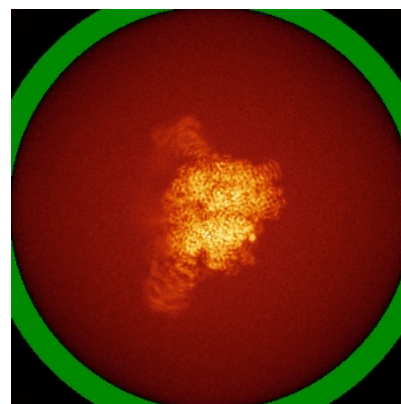
### 6.4.2 Raw map



X



Y



Z

The images above show the map standard deviation projections with false color in three orthogonal directions. Minimum values are shown in green, max in blue, and dark to light orange shades represent small to large values respectively.

## 6.5 Orthogonal surface views [i](#)

### 6.5.1 Primary map



X



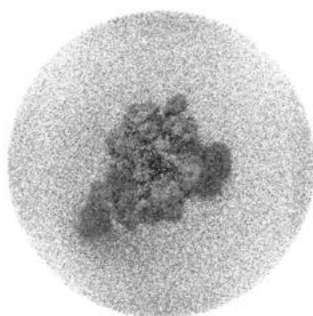
Y



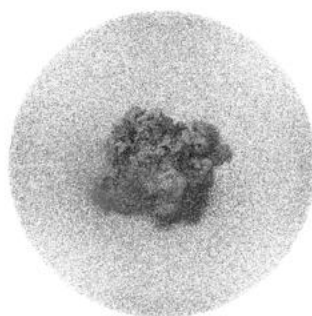
Z

The images above show the 3D surface view of the map at the recommended contour level 0.006. These images, in conjunction with the slice images, may facilitate assessment of whether an appropriate contour level has been provided.

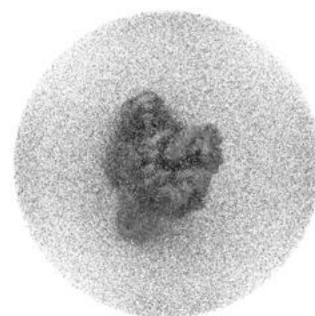
### 6.5.2 Raw map



X



Y



Z

These images show the 3D surface of the raw map. The raw map's contour level was selected so that its surface encloses the same volume as the primary map does at its recommended contour level.

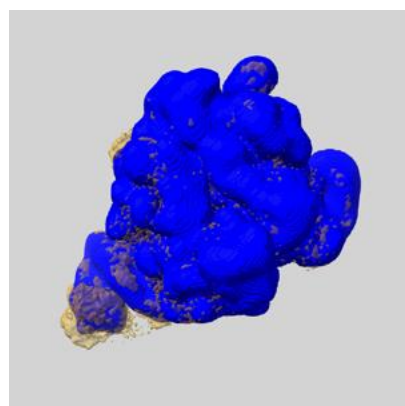
## 6.6 Mask visualisation [i](#)

This section shows the 3D surface view of the primary map at 50% transparency overlaid with the specified mask at 0% transparency

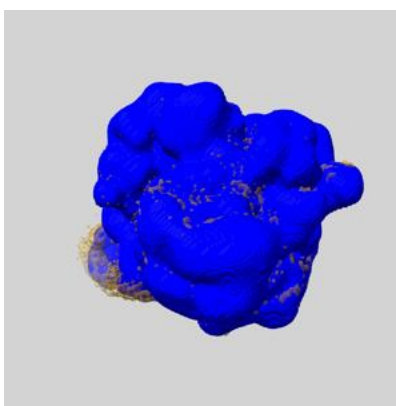
A mask typically either:

- Encompasses the whole structure
- Separates out a domain, a functional unit, a monomer or an area of interest from a larger structure

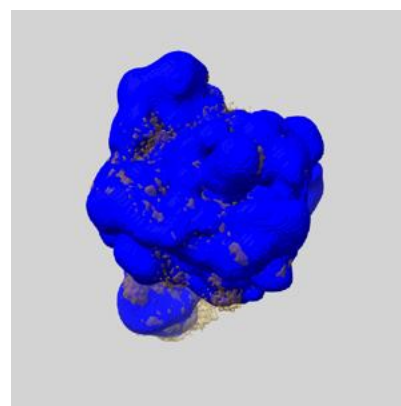
### 6.6.1 emd\_19019\_msk\_1.map [i](#)



X



Y

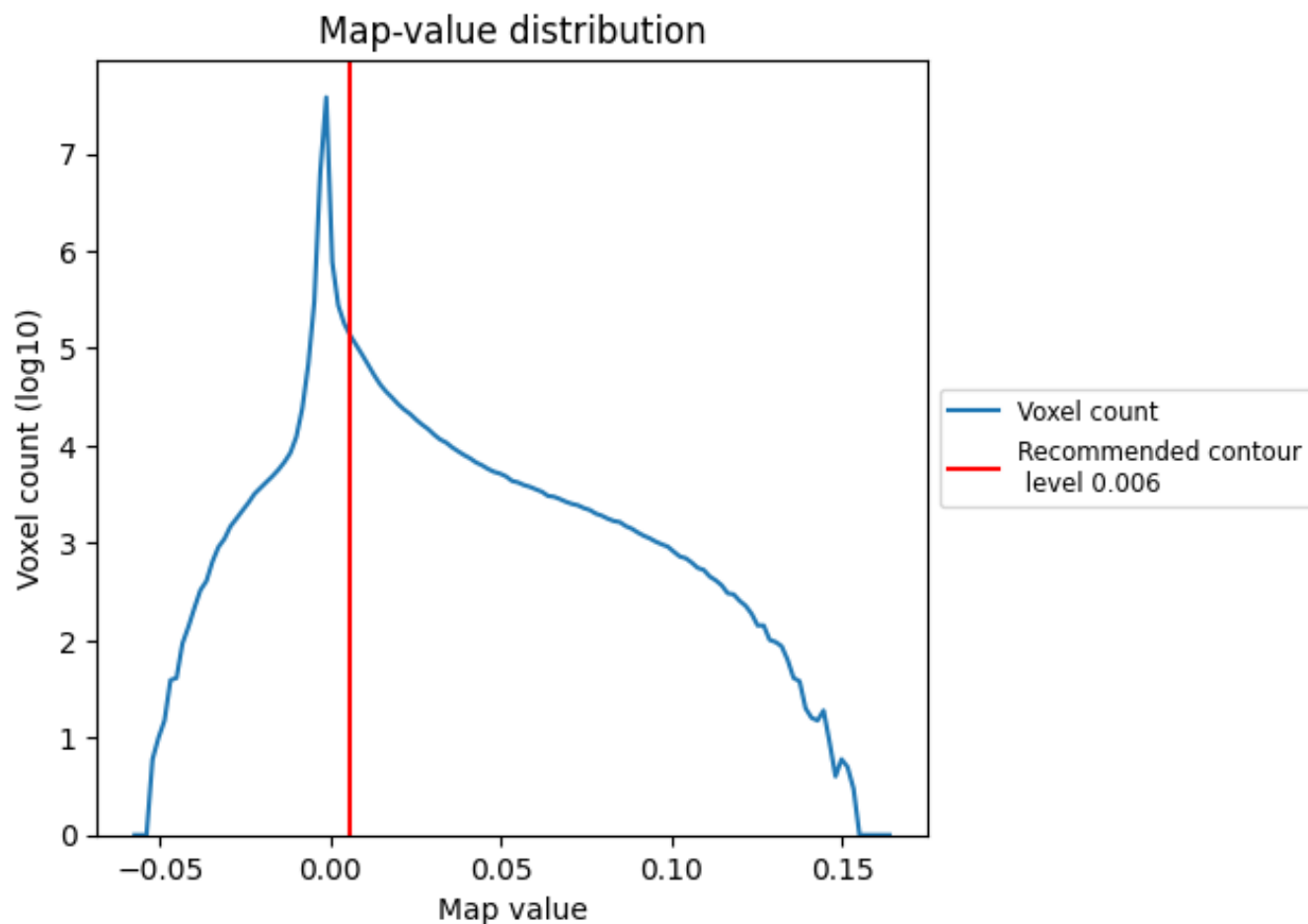


Z

## 7 Map analysis [i](#)

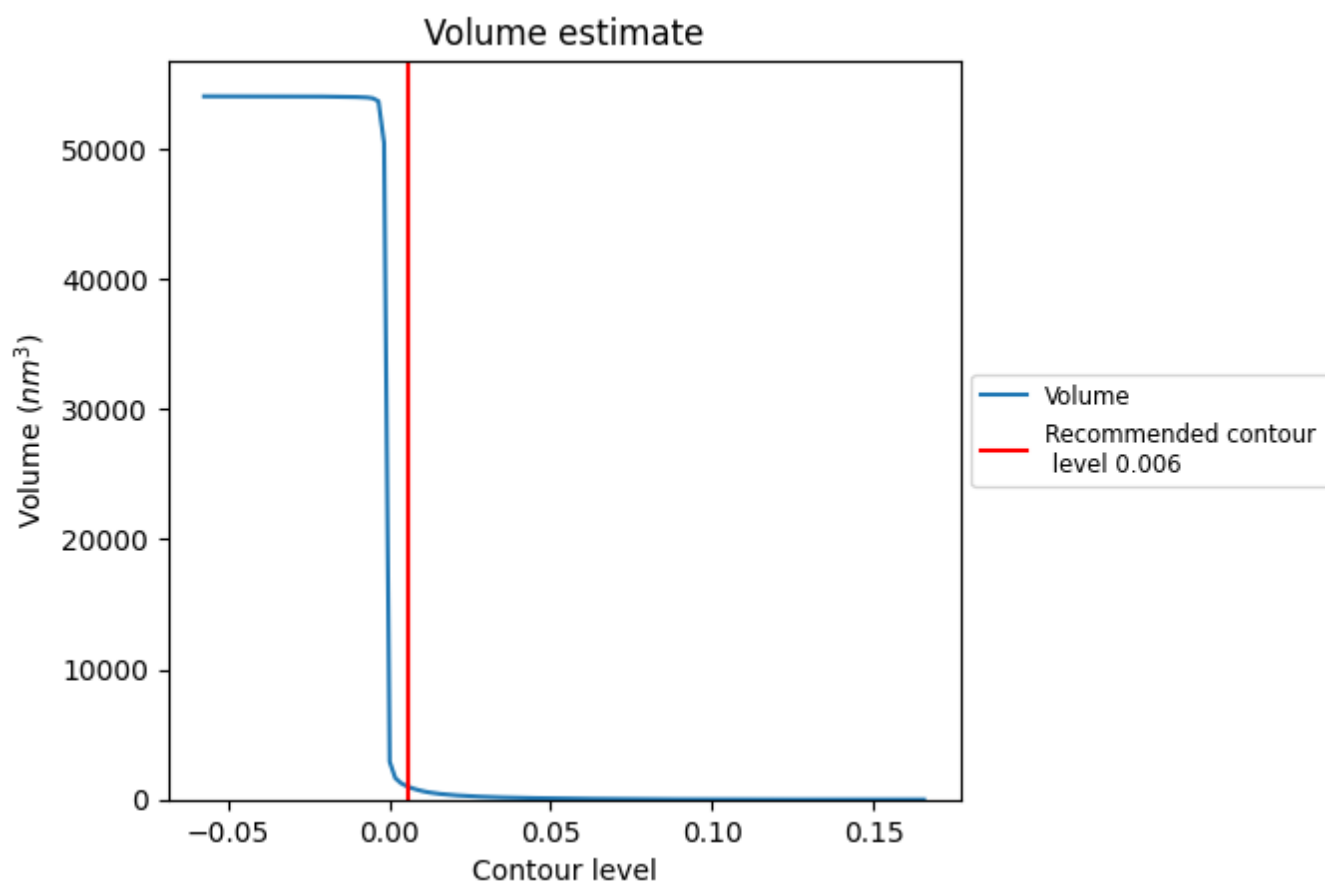
This section contains the results of statistical analysis of the map.

### 7.1 Map-value distribution [i](#)



The map-value distribution is plotted in 128 intervals along the x-axis. The y-axis is logarithmic. A spike in this graph at zero usually indicates that the volume has been masked.

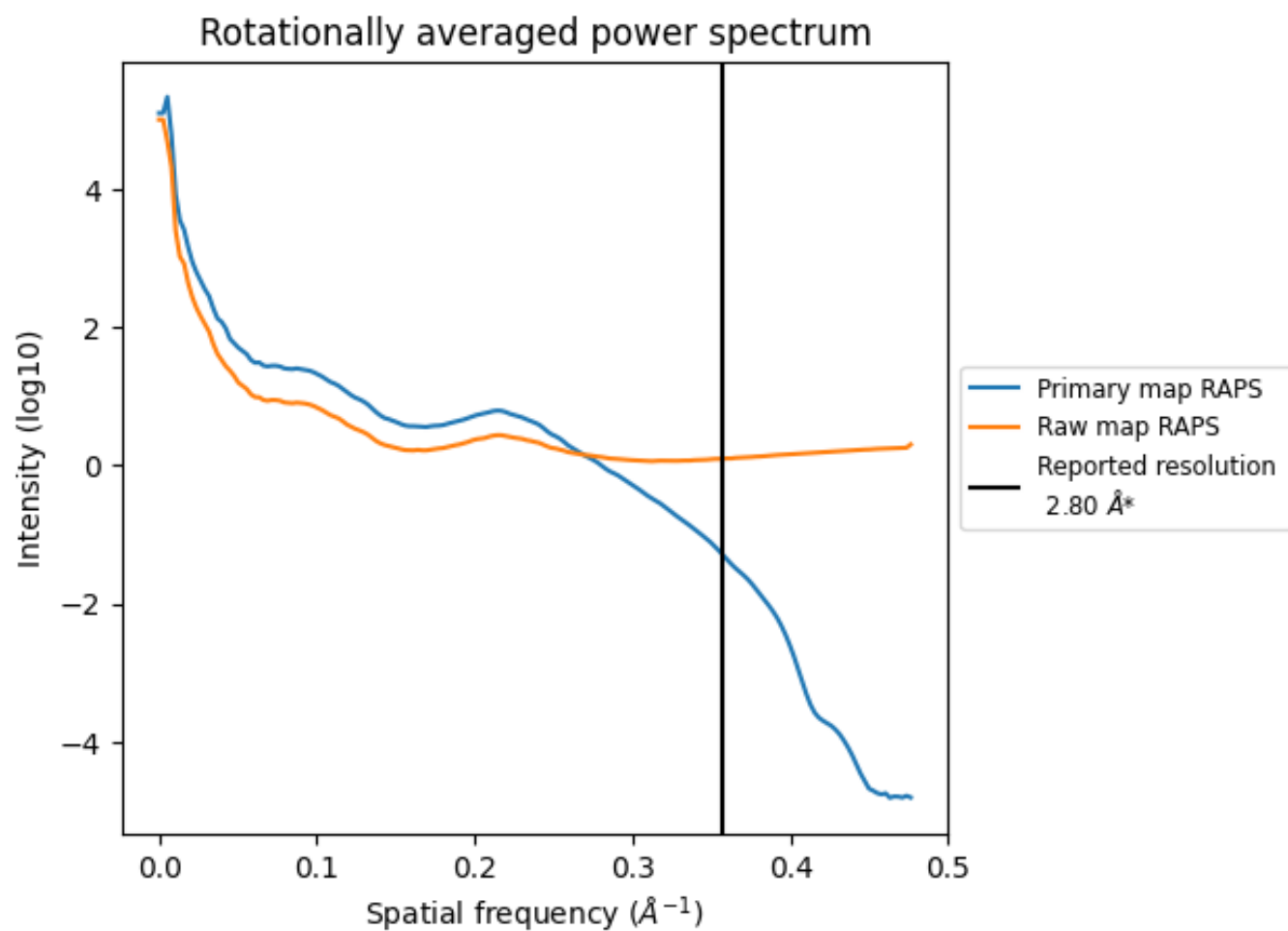
## 7.2 Volume estimate [i](#)



The volume at the recommended contour level is 976 nm<sup>3</sup>; this corresponds to an approximate mass of 881 kDa.

The volume estimate graph shows how the enclosed volume varies with the contour level. The recommended contour level is shown as a vertical line and the intersection between the line and the curve gives the volume of the enclosed surface at the given level.

### 7.3 Rotationally averaged power spectrum ⓘ

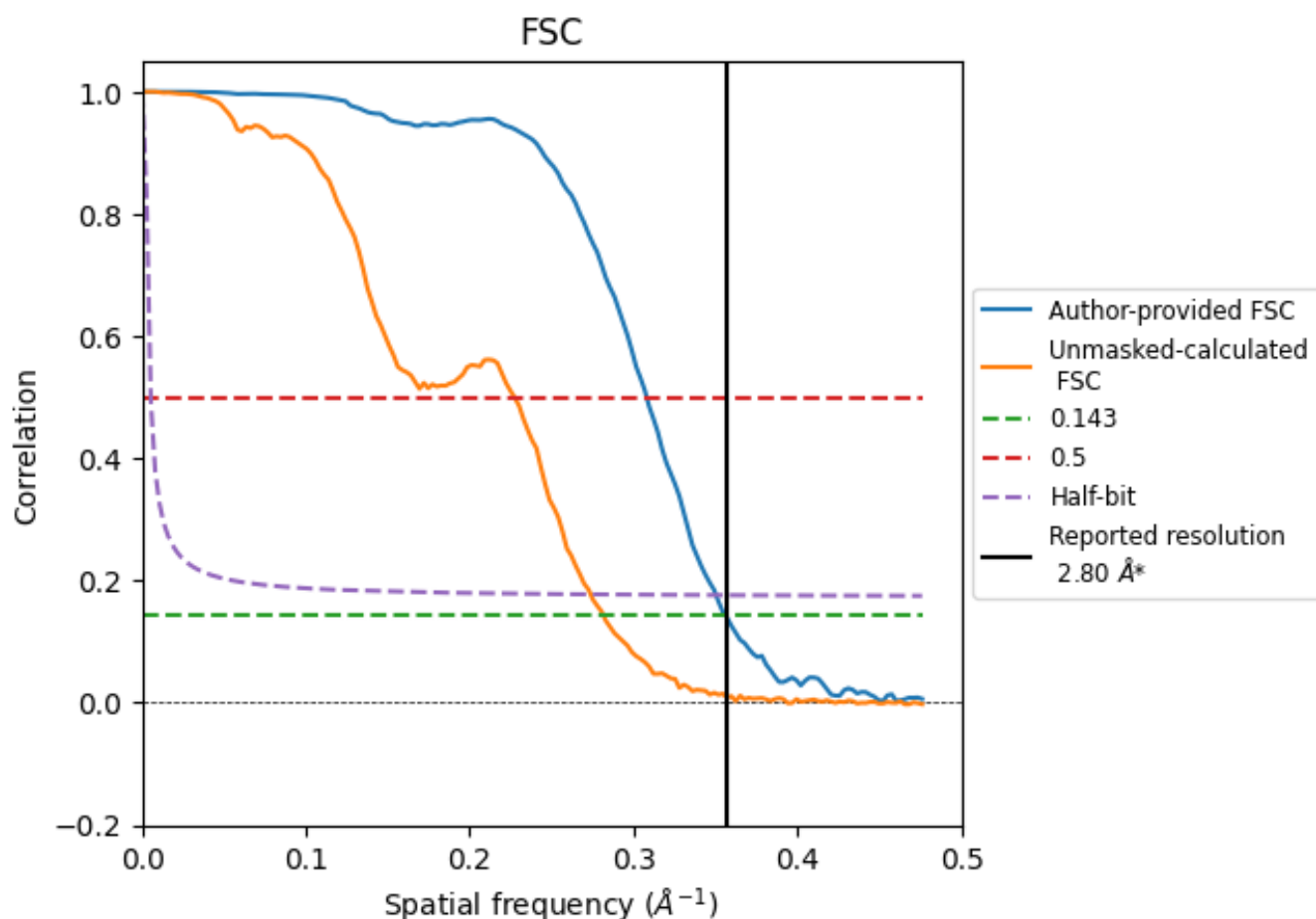


\*Reported resolution corresponds to spatial frequency of 0.357 Å<sup>-1</sup>

## 8 Fourier-Shell correlation [i](#)

Fourier-Shell Correlation (FSC) is the most commonly used method to estimate the resolution of single-particle and subtomogram-averaged maps. The shape of the curve depends on the imposed symmetry, mask and whether or not the two 3D reconstructions used were processed from a common reference. The reported resolution is shown as a black line. A curve is displayed for the half-bit criterion in addition to lines showing the 0.143 gold standard cut-off and 0.5 cut-off.

### 8.1 FSC [i](#)



\*Reported resolution corresponds to spatial frequency of 0.357 Å<sup>-1</sup>

## 8.2 Resolution estimates [i](#)

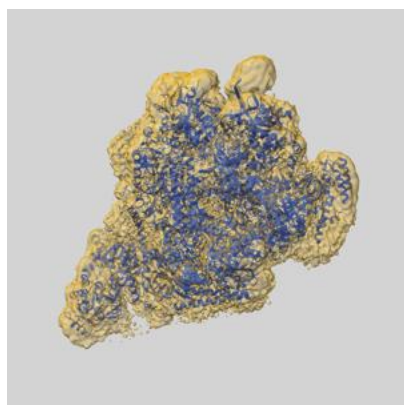
Resolution estimate (Å)	Estimation criterion (FSC cut-off)		
	0.143	0.5	Half-bit
Reported by author	2.80	-	-
Author-provided FSC curve	2.81	3.25	2.85
Unmasked-calculated*	3.55	4.40	3.65

\*Resolution estimate based on FSC curve calculated by comparison of deposited half-maps. The value from deposited half-maps intersecting FSC 0.143 CUT-OFF 3.55 differs from the reported value 2.8 by more than 10 %

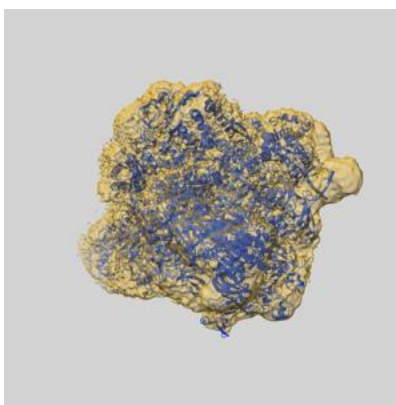
## 9 Map-model fit [i](#)

This section contains information regarding the fit between EMDB map EMD-19019 and PDB model 8RAM. Per-residue inclusion information can be found in section [3](#) on page [8](#).

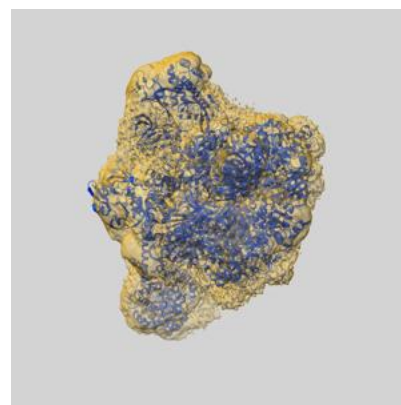
### 9.1 Map-model overlay [i](#)



X



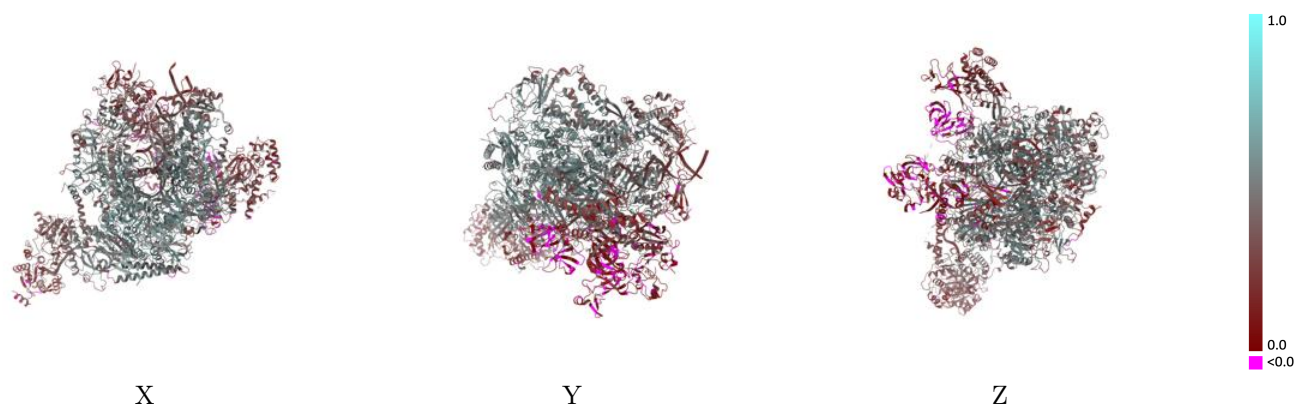
Y



Z

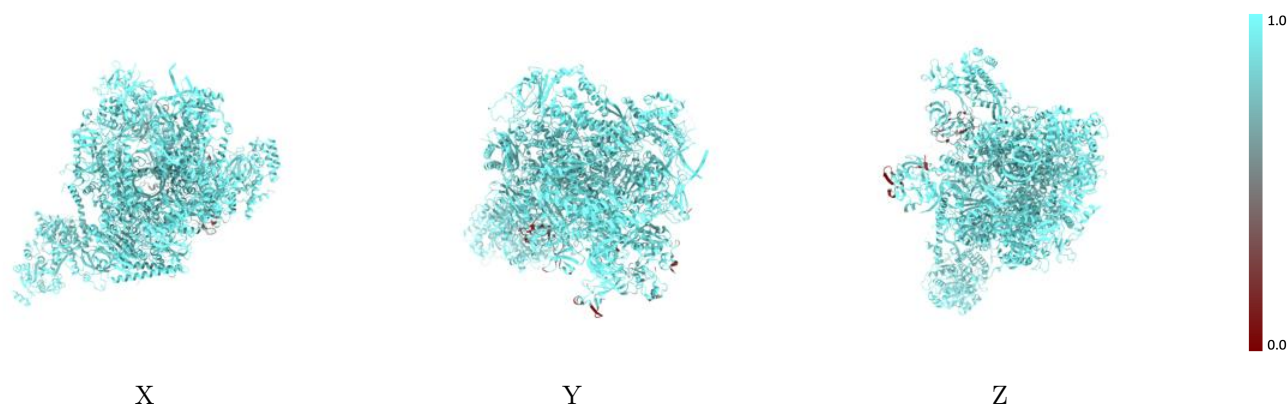
The images above show the 3D surface view of the map at the recommended contour level 0.006 at 50% transparency in yellow overlaid with a ribbon representation of the model coloured in blue. These images allow for the visual assessment of the quality of fit between the atomic model and the map.

## 9.2 Q-score mapped to coordinate model [i](#)



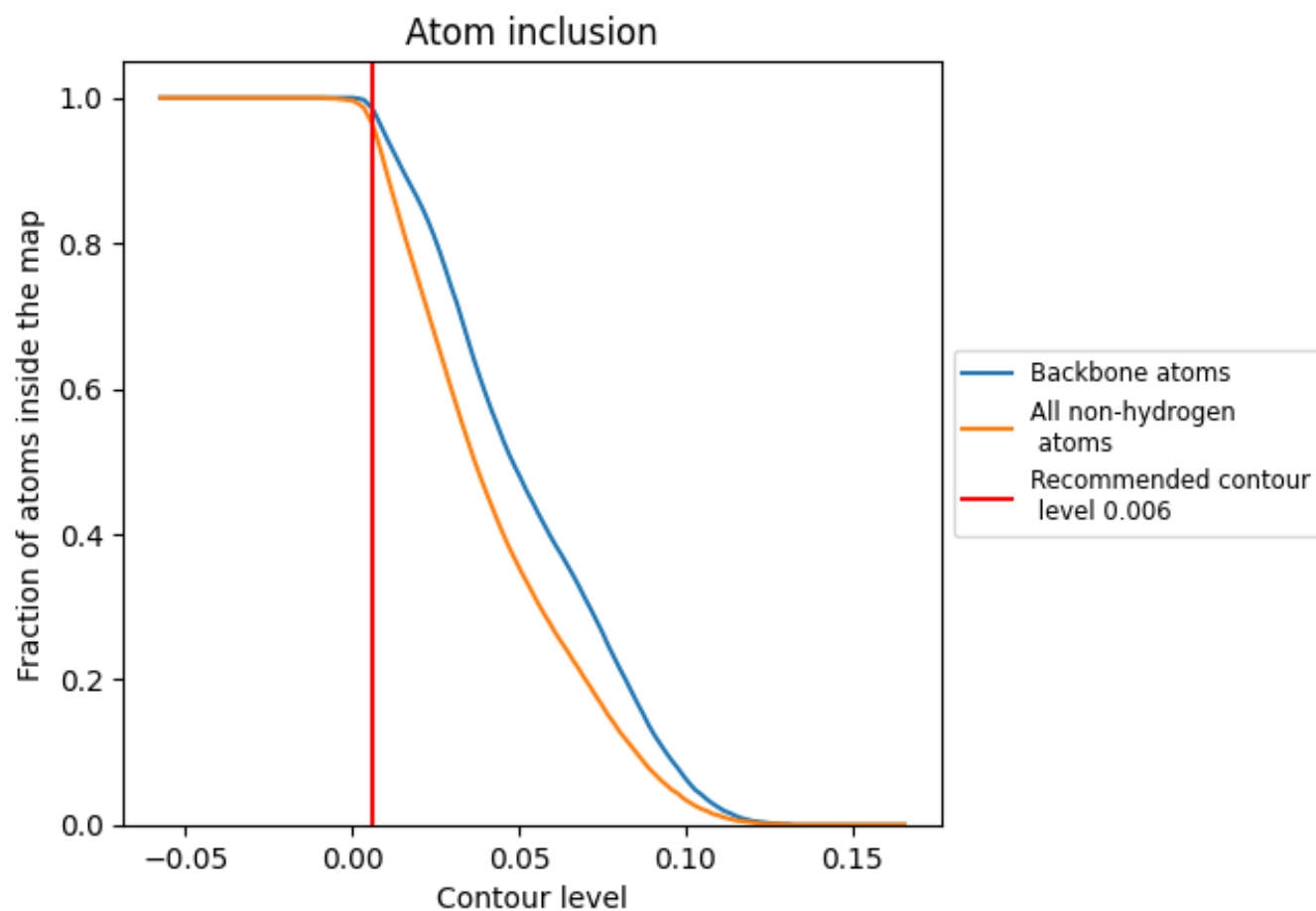
The images above show the model with each residue coloured according to its Q-score. This shows their resolvability in the map with higher Q-score values reflecting better resolvability. Please note: Q-score is calculating the resolvability of atoms, and thus high values are only expected at resolutions at which atoms can be resolved. Low Q-score values may therefore be expected for many entries.

## 9.3 Atom inclusion mapped to coordinate model [i](#)



The images above show the model with each residue coloured according to its atom inclusion. This shows to what extent they are inside the map at the recommended contour level (0.006).

























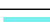



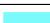











## 9.4 Atom inclusion ⓘ



At the recommended contour level, 99% of all backbone atoms, 96% of all non-hydrogen atoms, are inside the map.

## 9.5 Map-model fit summary

The table lists the average atom inclusion at the recommended contour level (0.006) and Q-score for the entire model and for each chain.

Chain	Atom inclusion	Q-score
All	 0.9650	 0.3940
A	 0.9780	 0.4730
B	 0.9770	 0.4930
C	 0.9690	 0.5160
D	 0.9900	 0.2080
E	 0.9880	 0.4370
F	 0.9930	 0.5020
G	 0.9740	 0.2550
H	 0.9810	 0.4610
I	 0.9800	 0.3300
J	 0.9610	 0.5270
K	 0.9820	 0.5200
L	 0.9760	 0.4450
M	 0.9380	 0.1650
N	 0.9980	 0.2320
O	 0.9820	 0.2960
P	 0.9970	 0.3000
T	 0.9890	 0.3230
Y	 0.9040	 0.1300
Z	 0.8170	 0.1310

