



Full wwPDB X-ray Structure Validation Report ⓘ

Apr 29, 2025 – 02:43 AM EDT

PDB ID : 3SKY / pdb_00003sky
Title : 2.1A crystal structure of the phosphate bound ATP binding domain of Archaeoglobus fulgidus COBP
Authors : Jayakanthan, S.; Roberts, S.A.; Weichsel, A.; Arguello, J.M.; McEvoy, M.M.
Deposited on : 2011-06-23
Resolution : 2.10 Å(reported)

This is a Full wwPDB X-ray Structure Validation Report for a publicly released PDB entry.

We welcome your comments at validation@mail.wwpdb.org

A user guide is available at

<https://www.wwpdb.org/validation/2017/XrayValidationReportHelp>

with specific help available everywhere you see the ⓘ symbol.

The types of validation reports are described at

<http://www.wwpdb.org/validation/2017/FAQs#types>.

The following versions of software and data (see [references ⓘ](#)) were used in the production of this report:

MolProbity : 4-5-2 with Phenix2.0rc1
Mogul : 2022.3.0, CSD as543be (2022)
Xtriage (Phenix) : 2.0rc1
EDS : 3.0
Percentile statistics : 20231227.v01 (using entries in the PDB archive December 27th 2023)
CCP4 : 9.0.006 (Gargrove)
Density-Fitness : 1.0.12
Ideal geometry (proteins) : Engh & Huber (2001)
Ideal geometry (DNA, RNA) : Parkinson et al. (1996)
Validation Pipeline (wwPDB-VP) : 2.43.1

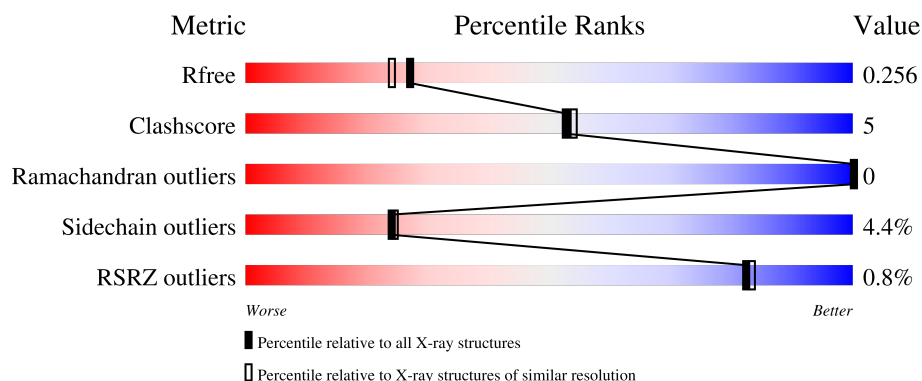
1 Overall quality at a glance

The following experimental techniques were used to determine the structure:

X-RAY DIFFRACTION


The reported resolution of this entry is 2.10 Å.

Percentile scores (ranging between 0-100) for global validation metrics of the entry are shown in the following graphic. The table shows the number of entries on which the scores are based.



Metric	Whole archive (#Entries)	Similar resolution (#Entries, resolution range(Å))
R_{free}	164625	6234 (2.10-2.10)
Clashscore	180529	6893 (2.10-2.10)
Ramachandran outliers	177936	6839 (2.10-2.10)
Sidechain outliers	177891	6840 (2.10-2.10)
RSRZ outliers	164620	6234 (2.10-2.10)

The table below summarises the geometric issues observed across the polymeric chains and their fit to the electron density. The red, orange, yellow and green segments of the lower bar indicate the fraction of residues that contain outliers for ≥ 3 , 2, 1 and 0 types of geometric quality criteria respectively. A grey segment represents the fraction of residues that are not modelled. The numeric value for each fraction is indicated below the corresponding segment, with a dot representing fractions $\leq 5\%$. The upper red bar (where present) indicates the fraction of residues that have poor fit to the electron density. The numeric value is given above the bar.

Mol	Chain	Length	Quality of chain
1	A	274	

2 Entry composition [i](#)

There are 4 unique types of molecules in this entry. The entry contains 2127 atoms, of which 0 are hydrogens and 0 are deuteriums.

In the tables below, the ZeroOcc column contains the number of atoms modelled with zero occupancy, the AltConf column contains the number of residues with at least one atom in alternate conformation and the Trace column contains the number of residues modelled with at most 2 atoms.

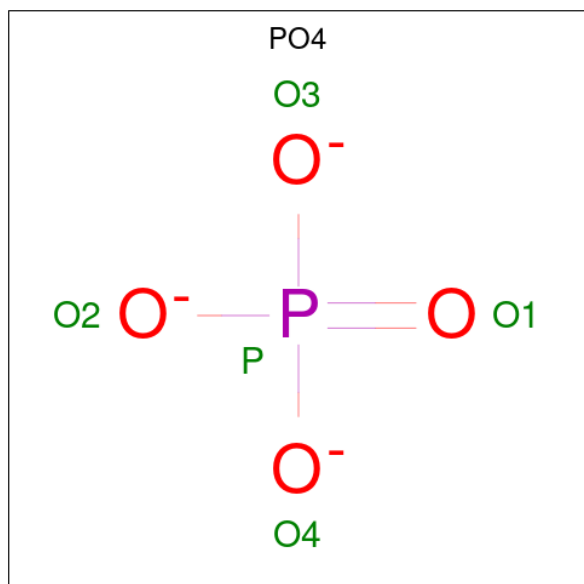
- Molecule 1 is a protein called Copper-exporting P-type ATPase B.

Mol	Chain	Residues	Atoms					ZeroOcc	AltConf	Trace
			Total	C	N	O	S			
1	A	261	2017	1269	351	392	5	0	5	0

There are 9 discrepancies between the modelled and reference sequences:

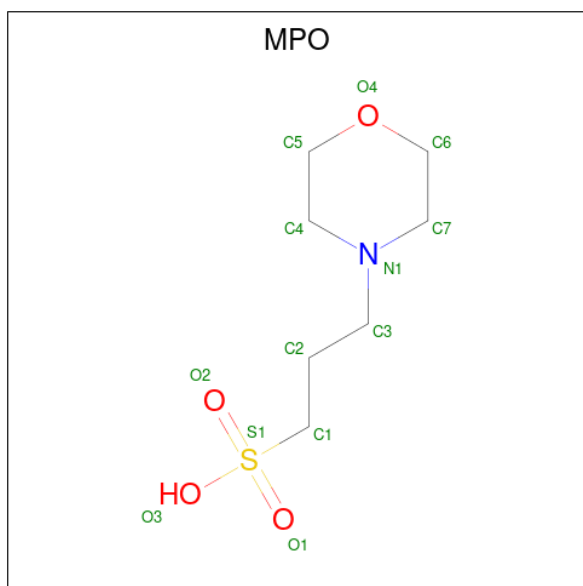
Chain	Residue	Modelled	Actual	Comment	Reference
A	371	MET	-	initiating methionine	UNP O30085
A	637	LEU	-	expression tag	UNP O30085
A	638	GLU	-	expression tag	UNP O30085
A	639	HIS	-	expression tag	UNP O30085
A	640	HIS	-	expression tag	UNP O30085
A	641	HIS	-	expression tag	UNP O30085
A	642	HIS	-	expression tag	UNP O30085
A	643	HIS	-	expression tag	UNP O30085
A	644	HIS	-	expression tag	UNP O30085

- Molecule 2 is PHOSPHATE ION (CCD ID: PO4) (formula: O_4P).



Mol	Chain	Residues	Atoms			ZeroOcc	AltConf
2	A	1	Total	O	P	0	0
			5	4	1		

- Molecule 3 is 3[N-MORPHOLINO]PROPANE SULFONIC ACID (CCD ID: MPO) (formula: $C_7H_{15}NO_4S$).

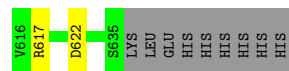


Mol	Chain	Residues	Atoms					ZeroOcc	AltConf
3	A	1	Total	C	N	O	S	0	0
			13	7	1	4	1		

- Molecule 4 is water.

Mol	Chain	Residues	Atoms		ZeroOcc	AltConf
4	A	92	Total	O	0	0
			92	92		

- Molecule 1: Copper-exporting P-type ATPase B



4 Data and refinement statistics

Property	Value	Source
Space group	P 2 21 21	Depositor
Cell constants a, b, c, α , β , γ	35.76Å 62.91Å 106.54Å 90.00° 90.00° 90.00°	Depositor
Resolution (Å)	106.54 – 2.10 54.17 – 2.10	Depositor EDS
% Data completeness (in resolution range)	98.8 (106.54-2.10) 98.9 (54.17-2.10)	Depositor EDS
R_{merge}	0.04	Depositor
R_{sym}	(Not available)	Depositor
$\langle I/\sigma(I) \rangle$ ¹	3.60 (at 2.10Å)	Xtriage
Refinement program	REFMAC 5.5.0109	Depositor
R, R_{free}	0.214 , 0.264 0.211 , 0.256	Depositor DCC
R_{free} test set	740 reflections (5.05%)	wwPDB-VP
Wilson B-factor (Å ²)	39.1	Xtriage
Anisotropy	0.605	Xtriage
Bulk solvent k_{sol} (e/Å ³), B_{sol} (Å ²)	0.31 , 33.3	EDS
L-test for twinning ²	$\langle L \rangle = 0.49$, $\langle L^2 \rangle = 0.33$	Xtriage
Estimated twinning fraction	No twinning to report.	Xtriage
F_o, F_c correlation	0.95	EDS
Total number of atoms	2127	wwPDB-VP
Average B, all atoms (Å ²)	44.0	wwPDB-VP

Xtriage's analysis on translational NCS is as follows: *The largest off-origin peak in the Patterson function is 7.48% of the height of the origin peak. No significant pseudotranslation is detected.*

¹Intensities estimated from amplitudes.

²Theoretical values of $\langle |L| \rangle$, $\langle L^2 \rangle$ for acentric reflections are 0.5, 0.333 respectively for untwinned datasets, and 0.375, 0.2 for perfectly twinned datasets.

5 Model quality

5.1 Standard geometry

Bond lengths and bond angles in the following residue types are not validated in this section: PO4, MPO

The Z score for a bond length (or angle) is the number of standard deviations the observed value is removed from the expected value. A bond length (or angle) with $|Z| > 5$ is considered an outlier worth inspection. RMSZ is the root-mean-square of all Z scores of the bond lengths (or angles).

Mol	Chain	Bond lengths		Bond angles	
		RMSZ	$\# Z > 5$	RMSZ	$\# Z > 5$
1	A	0.76	0/2048	0.80	0/2762

There are no bond length outliers.

There are no bond angle outliers.

There are no chirality outliers.

There are no planarity outliers.

5.2 Too-close contacts

In the following table, the Non-H and H(model) columns list the number of non-hydrogen atoms and hydrogen atoms in the chain respectively. The H(added) column lists the number of hydrogen atoms added and optimized by MolProbity. The Clashes column lists the number of clashes within the asymmetric unit, whereas Symm-Clashes lists symmetry-related clashes.

Mol	Chain	Non-H	H(model)	H(added)	Clashes	Symm-Clashes
1	A	2017	0	2034	20	0
2	A	5	0	0	0	0
3	A	13	0	14	0	0
4	A	92	0	0	1	0
All	All	2127	0	2048	20	0

The all-atom clashscore is defined as the number of clashes found per 1000 atoms (including hydrogen atoms). The all-atom clashscore for this structure is 5.

All (20) close contacts within the same asymmetric unit are listed below, sorted by their clash magnitude.

Atom-1	Atom-2	Interatomic distance (Å)	Clash overlap (Å)
1:A:390:LYS:NZ	1:A:539[B]:ASP:OD2	2.18	0.77
1:A:617[B]:ARG:H	1:A:617[B]:ARG:NE	1.98	0.62
1:A:568:LYS:NZ	4:A:69:HOH:O	2.33	0.61
1:A:617[B]:ARG:HB2	1:A:617[B]:ARG:NH1	2.17	0.59
1:A:475:ILE:HG21	1:A:482:THR:HG22	1.87	0.57
1:A:588:ALA:HB3	1:A:589:PRO:HD3	1.88	0.55
1:A:617[B]:ARG:NH1	1:A:622:ASP:OD2	2.43	0.51
1:A:615:LEU:HD22	1:A:617[B]:ARG:HH22	1.76	0.51
1:A:424:ARG:CG	1:A:424:ARG:HH21	2.24	0.49
1:A:499:ILE:HD12	1:A:499:ILE:N	2.28	0.49
1:A:389:ASP:O	1:A:393:THR:HB	2.15	0.47
1:A:424:ARG:HH21	1:A:424:ARG:HG3	1.79	0.47
1:A:475:ILE:HG23	1:A:480:ILE:HB	1.97	0.47
1:A:459:GLU:HB2	1:A:468:MET:HG2	1.98	0.46
1:A:617[B]:ARG:H	1:A:617[B]:ARG:CZ	2.29	0.45
1:A:447:VAL:CG1	1:A:460:GLY:HA3	2.48	0.44
1:A:422:GLU:HA	1:A:422:GLU:OE1	2.18	0.43
1:A:536:LEU:C	1:A:536:LEU:HD12	2.44	0.43
1:A:587:ASP:O	1:A:591:LEU:HD13	2.18	0.43
1:A:617[B]:ARG:HB2	1:A:617[B]:ARG:HH11	1.83	0.43

There are no symmetry-related clashes.

5.3 Torsion angles ⓘ

5.3.1 Protein backbone ⓘ

In the following table, the Percentiles column shows the percent Ramachandran outliers of the chain as a percentile score with respect to all X-ray entries followed by that with respect to entries of similar resolution.

The Analysed column shows the number of residues for which the backbone conformation was analysed, and the total number of residues.

Mol	Chain	Analysed	Favoured	Allowed	Outliers	Percentiles	
1	A	264/274 (96%)	258 (98%)	6 (2%)	0	100	100

There are no Ramachandran outliers to report.

5.3.2 Protein sidechains [i](#)

In the following table, the Percentiles column shows the percent sidechain outliers of the chain as a percentile score with respect to all X-ray entries followed by that with respect to entries of similar resolution.

The Analysed column shows the number of residues for which the sidechain conformation was analysed, and the total number of residues.

Mol	Chain	Analysed	Rotameric	Outliers	Percentiles	
1	A	209/221 (95%)	200 (96%)	9 (4%)	25	25

All (9) residues with a non-rotameric sidechain are listed below:

Mol	Chain	Res	Type
1	A	381	LYS
1	A	410	SER
1	A	424	ARG
1	A	453	ILE
1	A	463	ASN
1	A	567	GLU
1	A	606	VAL
1	A	610	THR
1	A	613	ILE

Sometimes sidechains can be flipped to improve hydrogen bonding and reduce clashes. All (1) such sidechains are listed below:

Mol	Chain	Res	Type
1	A	375	GLN

5.3.3 RNA [i](#)

There are no RNA molecules in this entry.

5.4 Non-standard residues in protein, DNA, RNA chains [i](#)

There are no non-standard protein/DNA/RNA residues in this entry.

5.5 Carbohydrates [i](#)

There are no oligosaccharides in this entry.

5.6 Ligand geometry

2 ligands are modelled in this entry.

In the following table, the Counts columns list the number of bonds (or angles) for which Mogul statistics could be retrieved, the number of bonds (or angles) that are observed in the model and the number of bonds (or angles) that are defined in the Chemical Component Dictionary. The Link column lists molecule types, if any, to which the group is linked. The Z score for a bond length (or angle) is the number of standard deviations the observed value is removed from the expected value. A bond length (or angle) with $|Z| > 2$ is considered an outlier worth inspection. RMSZ is the root-mean-square of all Z scores of the bond lengths (or angles).

Mol	Type	Chain	Res	Link	Bond lengths			Bond angles		
					Counts	RMSZ	# $ Z > 2$	Counts	RMSZ	# $ Z > 2$
2	PO4	A	1	-	4,4,4	1.08	0	6,6,6	0.98	0
3	MPO	A	645	-	13,13,13	2.68	2 (15%)	17,17,17	2.13	6 (35%)

In the following table, the Chirals column lists the number of chiral outliers, the number of chiral centers analysed, the number of these observed in the model and the number defined in the Chemical Component Dictionary. Similar counts are reported in the Torsion and Rings columns. '-' means no outliers of that kind were identified.

Mol	Type	Chain	Res	Link	Chirals	Torsions	Rings
3	MPO	A	645	-	-	3/7/15/15	0/1/1/1

All (2) bond length outliers are listed below:

Mol	Chain	Res	Type	Atoms	Z	Observed(Å)	Ideal(Å)
3	A	645	MPO	C1-S1	-7.22	1.67	1.77
3	A	645	MPO	O2-S1	6.22	1.62	1.45

All (6) bond angle outliers are listed below:

Mol	Chain	Res	Type	Atoms	Z	Observed(°)	Ideal(°)
3	A	645	MPO	C7-N1-C4	5.14	119.92	108.84
3	A	645	MPO	C3-N1-C4	3.31	120.07	111.24
3	A	645	MPO	C3-N1-C7	3.29	120.00	111.24
3	A	645	MPO	O1-S1-C1	2.53	110.55	106.73
3	A	645	MPO	O3-S1-C1	2.08	110.07	106.00
3	A	645	MPO	C2-C3-N1	-2.02	108.25	113.93

There are no chirality outliers.

All (3) torsion outliers are listed below:

Mol	Chain	Res	Type	Atoms
3	A	645	MPO	S1-C1-C2-C3
3	A	645	MPO	C2-C3-N1-C7
3	A	645	MPO	C1-C2-C3-N1

There are no ring outliers.

No monomer is involved in short contacts.

5.7 Other polymers [i](#)

There are no such residues in this entry.

5.8 Polymer linkage issues [i](#)

There are no chain breaks in this entry.

6 Fit of model and data [i](#)

6.1 Protein, DNA and RNA chains [i](#)

In the following table, the column labelled ‘#RSRZ> 2’ contains the number (and percentage) of RSRZ outliers, followed by percent RSRZ outliers for the chain as percentile scores relative to all X-ray entries and entries of similar resolution. The OWAB column contains the minimum, median, 95th percentile and maximum values of the occupancy-weighted average B-factor per residue. The column labelled ‘Q< 0.9’ lists the number of (and percentage) of residues with an average occupancy less than 0.9.

Mol	Chain	Analysed	<RSRZ>	#RSRZ>2	OWAB(Å ²)	Q<0.9
1	A	261/274 (95%)	0.02	2 (0%) 82 83	15, 38, 73, 138	5 (1%)

All (2) RSRZ outliers are listed below:

Mol	Chain	Res	Type	RSRZ
1	A	474	TYR	2.3
1	A	454	PRO	2.2

6.2 Non-standard residues in protein, DNA, RNA chains [i](#)

There are no non-standard protein/DNA/RNA residues in this entry.

6.3 Carbohydrates [i](#)

There are no monosaccharides in this entry.

6.4 Ligands [i](#)

In the following table, the Atoms column lists the number of modelled atoms in the group and the number defined in the chemical component dictionary. The B-factors column lists the minimum, median, 95th percentile and maximum values of B factors of atoms in the group. The column labelled ‘Q< 0.9’ lists the number of atoms with occupancy less than 0.9.

Mol	Type	Chain	Res	Atoms	RSCC	RSR	B-factors(Å ²)	Q<0.9
3	MPO	A	645	13/13	0.63	0.26	53,53,56,56	13
2	PO4	A	1	5/5	0.90	0.10	44,45,46,47	5

6.5 Other polymers [i](#)

There are no such residues in this entry.