



wwPDB EM Validation Summary Report ⓘ

Oct 13, 2024 – 09:33 AM EDT

PDB ID : 7SYD
EMDB ID : EMD-25522
Title : Cryo-EM structure of the extracellular module of the full-length EGFR bound to EGF "tips-juxtaposed" conformation
Authors : Huang, Y.; Ognjenovic, J.; Karandur, D.; Miller, K.; Merk, A.; Subramaniam, S.; Kuriyan, J.
Deposited on : 2021-11-24
Resolution : 3.10 Å(reported)

This is a wwPDB EM Validation Summary Report for a publicly released PDB entry.

We welcome your comments at validation@mail.wwpdb.org

A user guide is available at

<https://www.wwpdb.org/validation/2017/EMValidationReportHelp>
with specific help available everywhere you see the ⓘ symbol.

The types of validation reports are described at

<http://www.wwpdb.org/validation/2017/FAQs#types>.

The following versions of software and data (see [references ⓘ](#)) were used in the production of this report:

EMDB validation analysis : 0.0.1.dev113
MolProbity : 4.02b-467
Percentile statistics : 20231227.v01 (using entries in the PDB archive December 27th 2023)
MapQ : 1.9.13
Ideal geometry (proteins) : Engh & Huber (2001)
Ideal geometry (DNA, RNA) : Parkinson et al. (1996)
Validation Pipeline (wwPDB-VP) : 2.39

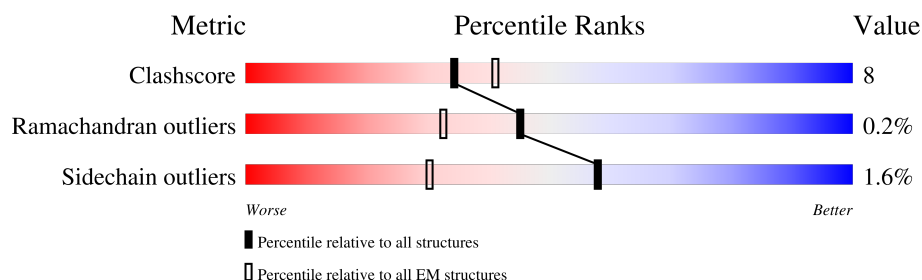
1 Overall quality at a glance

The following experimental techniques were used to determine the structure:

ELECTRON MICROSCOPY

The reported resolution of this entry is 3.10 Å.

Percentile scores (ranging between 0-100) for global validation metrics of the entry are shown in the following graphic. The table shows the number of entries on which the scores are based.



Metric	Whole archive (#Entries)	EM structures (#Entries)
Clashscore	210492	15764
Ramachandran outliers	207382	16835
Sidechain outliers	206894	16415

The table below summarises the geometric issues observed across the polymeric chains and their fit to the map. The red, orange, yellow and green segments of the bar indicate the fraction of residues that contain outliers for ≥ 3 , 2, 1 and 0 types of geometric quality criteria respectively. A grey segment represents the fraction of residues that are not modelled. The numeric value for each fraction is indicated below the corresponding segment, with a dot representing fractions $\leq 5\%$. The upper red bar (where present) indicates the fraction of residues that have poor fit to the EM map (all-atom inclusion $< 40\%$). The numeric value is given above the bar.

Mol	Chain	Length	Quality of chain
1	A	1210	
1	B	1210	
2	C	53	
2	D	53	

2 Entry composition

There are 2 unique types of molecules in this entry. The entry contains 10216 atoms, of which 0 are hydrogens and 0 are deuteriums.

In the tables below, the AltConf column contains the number of residues with at least one atom in alternate conformation and the Trace column contains the number of residues modelled with at most 2 atoms.

- Molecule 1 is a protein called Epidermal growth factor receptor.

Mol	Chain	Residues	Atoms					AltConf	Trace
1	A	614	Total	C	N	O	S	1	0
			4723	2914	842	907	60		
1	B	614	Total	C	N	O	S	0	0
			4723	2914	842	907	60		

There are 2 discrepancies between the modelled and reference sequences:

Chain	Residue	Modelled	Actual	Comment	Reference
A	232	ASN	ASP	conflict	UNP P00533
B	232	ASN	ASP	conflict	UNP P00533

- Molecule 2 is a protein called Epidermal growth factor.

Mol	Chain	Residues	Atoms					AltConf	Trace
2	C	47	Total	C	N	O	S	0	0
			385	244	63	71	7		
2	D	47	Total	C	N	O	S	0	0
			385	244	63	71	7		

- Molecule 1: Epidermal growth factor receptor



HIS	GLN	ILE	SER	LEU	ASP	ASN	PRO	PRO	ASP	TYR	GLN	GLN	ASP	PHE	PHE	PRO	PRO	LYS	GLU	ALA	ALA	LYS	PRO	ASN	GLY	GLY	ILE	PHE	LYS	GLY	SER	THR	ALA	ALA	GLU	GLU	ASN	ALA	ALA	GLU	TYR	LEU	ARG	VAL	ALA	ALA	PRO	GLN	SER	SER	GLU	PHE	ILE	GLY	ALA
-----	-----	-----	-----	-----	-----	-----	-----	-----	-----	-----	-----	-----	-----	-----	-----	-----	-----	-----	-----	-----	-----	-----	-----	-----	-----	-----	-----	-----	-----	-----	-----	-----	-----	-----	-----	-----	-----	-----	-----	-----	-----	-----	-----	-----	-----	-----	-----	-----	-----	-----	-----	-----	-----	-----	-----

- Molecule 1: Epidermal growth factor receptor

Chain B: 42% 9% 49%

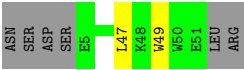
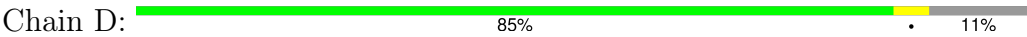
HIS	SER	SER	THR	ALA	GLY	ASN	GLY	PRO	ALA	GLU	THR	LEU	TYR	ASP	LYS	ARG	GLU	VAL	GLU	GLY	MET	E521	I327	S146	MET
SER	THR	ALA	VAL	ALA	GLU	ASN	GLY	PRO	ALA	GLU	THR	LEU	ASP	VAL	CYS	ILE	ASP	ASP	THR	THR	ARG	P522	C338	L149	ARG
ALA	VAL	ALA	VAL	ALA	GLU	ASN	GLY	PRO	ALA	GLU	THR	LEU	ASP	VAL	ILE	HIS	VAL	VAL	PHE	GLY	GLY	R523	L345	M152	SER
GLY	ASN	GLY	ASN	GLY	GLU	ASN	GLY	PRO	ALA	GLU	THR	LEU	ASP	VAL	ALA	HIS	VAL	VAL	LYS	LYS	ALA	F525	K372	M154	THR
PRO	ALA	PRO	ALA	GLY	GLU	ASN	GLY	TYR	ASP	TYR	ASP	VAL	ASP	ASP	ASP	HIS	ARG	ARG	ILE	ILE	LEU	V526		D155	GLY
GLU	THR	LEU	THR	GLU	TYR	LEU	LEU	LEU	LEU	VAL	VAL	VAL	VAL	VAL	SER	ASP	ASP	ASP	VAL	VAL	LEU	C631	T378	F156	ALA
TYR	TYR	ARG	ARG	GLU	ARG	GLU	GLU	PRO	PRO	TRP	TRP	TRP	TRP	TRP	PRO	TRP	TRP	TRP	GLY	GLY	LEU	I532	F380	N158	LEU
LEU	ASN	VAL	VAL	ASN	VAL	LYS	LYS	GLN	GLN	ILE	ILE	ILE	ILE	ILE	LYS	VAL	VAL	VAL	SER	VAL	VAL	L539		N158	LEU
THR	THR	ALA	THR	THR	ALA	GLY	ARG	GLY	CYS	CYS	GLY	GLY	GLY	GLY	ALA	VAL	ALA	ALA	GLY	ALA	ALA	P640	N398	C163	ALA
VAL	VAL	GLN	GLN	GLN	GLN	ARG	ARG	ARG	THR	THR	THR	THR	THR	THR	THR	THR	THR	PHE	PHE	GLY	GLY	R550	R403	C166	LEU
GLN	PRO	PRO	PRO	PRO	PRO	PHE	PHE	PHE	THR	THR	THR	THR	THR	THR	THR	THR	THR	GLY	GLY	ILE	ILE	G551	R405	D167	ALA
SER	SER	SER	THR	THR	THR	THR	THR	THR	THR	THR	THR	THR	THR	THR	THR	THR	THR	THR	THR	THR	THR	G552	R405	P168	ALA
GLU	GLU	GLU	GLU	GLU	GLU	GLU	GLU	GLU	GLU	GLU	GLU	GLU	GLU	GLU	GLU	GLU	GLU	GLU	GLU	GLU	GLU	Q657	H409	S169	THR
PHE	PHE	PHE	PHE	PHE	PHE	PHE	PHE	PHE	PHE	PHE	PHE	PHE	PHE	PHE	PHE	PHE	PHE	PHE	PHE	PHE	PHE	Q657	H409	C170	CYS
ILE	ILE	ILE	ILE	ILE	ILE	ILE	ILE	ILE	ILE	ILE	ILE	ILE	ILE	ILE	ILE	ILE	ILE	ILE	ILE	ILE	ILE	Q657	H409	C170	PRO
ASN	ASN	ASN	ASN	ASN	ASN	ASN	ASN	ASN	ASN	ASN	ASN	ASN	ASN	ASN	ASN	ASN	ASN	ASN	ASN	ASN	ASN	D663	S413	C175	ALA
SER	SER	SER	SER	SER	SER	SER	SER	SER	SER	SER	SER	SER	SER	SER	SER	SER	SER	SER	SER	SER	SER	D663	S413	W176	SER
THR	THR	THR	THR	THR	THR	THR	THR	THR	THR	THR	THR	THR	THR	THR	THR	THR	THR	THR	THR	THR	THR	D663	S413	W176	ALA
PHE	PHE	PHE	PHE	PHE	PHE	PHE	PHE	PHE	PHE	PHE	PHE	PHE	PHE	PHE	PHE	PHE	PHE	PHE	PHE	PHE	PHE	C567	L424	N182	ARG
ASP	ASP	ASP	ASP	ASP	ASP	ASP	ASP	ASP	ASP	ASP	ASP	ASP	ASP	ASP	ASP	ASP	ASP	ASP	ASP	ASP	ASP	C567	L424	N182	ALA
THR	THR	THR	THR	THR	THR	THR	THR	THR	THR	THR	THR	THR	THR	THR	THR	THR	THR	THR	THR	THR	THR	C567	L424	C183	ALA
ILE	ILE	ILE	ILE	ILE	ILE	ILE	ILE	ILE	ILE	ILE	ILE	ILE	ILE	ILE	ILE	ILE	ILE	ILE	ILE	ILE	ILE	E578	I439	K188	L1
ALA	ALA	ALA	ALA	ALA	ALA	ALA	ALA	ALA	ALA	ALA	ALA	ALA	ALA	ALA	ALA	ALA	ALA	ALA	ALA	ALA	ALA	E578	I439	K188	T10
PRO	PRO	PRO	PRO	PRO	PRO	PRO	PRO	PRO	PRO	PRO	PRO	PRO	PRO	PRO	PRO	PRO	PRO	PRO	PRO	PRO	PRO	E578	I439	K188	ALA
ASN																									

- Molecule 2: Epidermal growth factor

Chain C: 85% • 11%



- Molecule 2: Epidermal growth factor



4 Experimental information

Property	Value	Source
EM reconstruction method	SINGLE PARTICLE	Depositor
Imposed symmetry	POINT, C1	Depositor
Number of particles used	105728	Depositor
Resolution determination method	FSC 0.143 CUT-OFF	Depositor
CTF correction method	PHASE FLIPPING AND AMPLITUDE CORRECTION	Depositor
Microscope	FEI TITAN KRIOS	Depositor
Voltage (kV)	300	Depositor
Electron dose ($e^-/\text{\AA}^2$)	50	Depositor
Minimum defocus (nm)	1500	Depositor
Maximum defocus (nm)	7500	Depositor
Magnification	Not provided	
Image detector	GATAN K3 (6k x 4k)	Depositor
Maximum map value	1.465	Depositor
Minimum map value	-0.542	Depositor
Average map value	-0.000	Depositor
Map value standard deviation	0.038	Depositor
Recommended contour level	0.2	Depositor
Map size (Å)	323.81998, 323.81998, 323.81998	wwPDB
Map dimensions	300, 300, 300	wwPDB
Map angles (°)	90.0, 90.0, 90.0	wwPDB
Pixel spacing (Å)	1.0794, 1.0794, 1.0794	Depositor

5 Model quality [i](#)

5.1 Standard geometry [i](#)

The Z score for a bond length (or angle) is the number of standard deviations the observed value is removed from the expected value. A bond length (or angle) with $|Z| > 5$ is considered an outlier worth inspection. RMSZ is the root-mean-square of all Z scores of the bond lengths (or angles).

Mol	Chain	Bond lengths		Bond angles	
		RMSZ	$\# Z > 5$	RMSZ	$\# Z > 5$
1	A	0.38	0/4806	0.49	0/6501
1	B	0.38	0/4815	0.50	0/6514
2	C	0.41	0/396	0.45	0/536
2	D	0.45	0/396	0.47	0/536
All	All	0.38	0/10413	0.50	0/14087

There are no bond length outliers.

There are no bond angle outliers.

There are no chirality outliers.

There are no planarity outliers.

5.2 Too-close contacts [i](#)

In the following table, the Non-H and H(model) columns list the number of non-hydrogen atoms and hydrogen atoms in the chain respectively. The H(added) column lists the number of hydrogen atoms added and optimized by MolProbity. The Clashes column lists the number of clashes within the asymmetric unit, whereas Symm-Clashes lists symmetry-related clashes.

Mol	Chain	Non-H	H(model)	H(added)	Clashes	Symm-Clashes
1	A	4723	0	4556	96	0
1	B	4723	0	4556	77	0
2	C	385	0	344	1	0
2	D	385	0	344	2	0
All	All	10216	0	9800	159	0

The all-atom clashscore is defined as the number of clashes found per 1000 atoms (including hydrogen atoms). The all-atom clashscore for this structure is 8.

The worst 5 of 159 close contacts within the same asymmetric unit are listed below, sorted by their clash magnitude.

Atom-1	Atom-2	Interatomic distance (Å)	Clash overlap (Å)
1:A:602:TYR:HB3	1:B:602:TYR:CD1	1.41	1.52
1:A:602:TYR:HB3	1:B:602:TYR:CE1	1.71	1.25
1:A:602:TYR:CB	1:B:602:TYR:CD1	2.31	1.13
1:A:602:TYR:CB	1:B:602:TYR:HD1	1.73	0.98
1:A:602:TYR:CB	1:B:602:TYR:CE1	2.45	0.97

There are no symmetry-related clashes.

5.3 Torsion angles [i](#)

5.3.1 Protein backbone [i](#)

In the following table, the Percentiles column shows the percent Ramachandran outliers of the chain as a percentile score with respect to all PDB entries followed by that with respect to all EM entries.

The Analysed column shows the number of residues for which the backbone conformation was analysed, and the total number of residues.

Mol	Chain	Analysed	Favoured	Allowed	Outliers	Percentiles	
1	A	612/1210 (51%)	543 (89%)	67 (11%)	2 (0%)	37	68
1	B	612/1210 (51%)	549 (90%)	63 (10%)	0	100	100
2	C	45/53 (85%)	42 (93%)	3 (7%)	0	100	100
2	D	45/53 (85%)	41 (91%)	4 (9%)	0	100	100
All	All	1314/2526 (52%)	1175 (89%)	137 (10%)	2 (0%)	45	74

All (2) Ramachandran outliers are listed below:

Mol	Chain	Res	Type
1	A	516	ASN
1	A	613	PRO

5.3.2 Protein sidechains [i](#)

In the following table, the Percentiles column shows the percent sidechain outliers of the chain as a percentile score with respect to all PDB entries followed by that with respect to all EM entries.

The Analysed column shows the number of residues for which the sidechain conformation was analysed, and the total number of residues.

Mol	Chain	Analysed	Rotameric	Outliers	Percentiles	
1	A	535/1053 (51%)	526 (98%)	9 (2%)	56	78
1	B	536/1053 (51%)	527 (98%)	9 (2%)	56	78
2	C	41/47 (87%)	40 (98%)	1 (2%)	44	70
2	D	41/47 (87%)	41 (100%)	0	100	100
All	All	1153/2200 (52%)	1134 (98%)	19 (2%)	58	79

5 of 19 residues with a non-rotameric sidechain are listed below:

Mol	Chain	Res	Type
1	B	557	GLN
1	B	596	CYS
1	B	610	GLU
1	B	595	LEU
1	A	601	THR

Sometimes sidechains can be flipped to improve hydrogen bonding and reduce clashes. 5 of 16 such sidechains are listed below:

Mol	Chain	Res	Type
1	B	409	HIS
1	B	384	GLN
1	A	544	ASN
1	B	134	ASN
1	A	541	GLN

5.3.3 RNA ⓘ

There are no RNA molecules in this entry.

5.4 Non-standard residues in protein, DNA, RNA chains ⓘ

There are no non-standard protein/DNA/RNA residues in this entry.

5.5 Carbohydrates ⓘ

There are no oligosaccharides in this entry.

5.6 Ligand geometry [i](#)

There are no ligands in this entry.

5.7 Other polymers [i](#)

There are no such residues in this entry.

5.8 Polymer linkage issues [i](#)

There are no chain breaks in this entry.

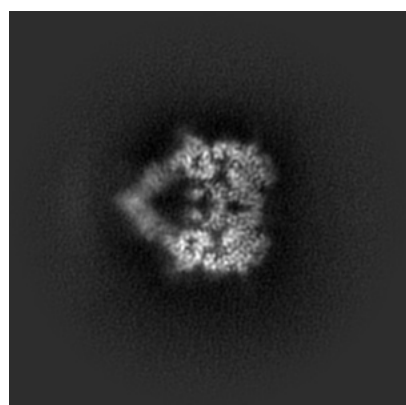
6 Map visualisation [i](#)

This section contains visualisations of the EMDB entry EMD-25522. These allow visual inspection of the internal detail of the map and identification of artifacts.

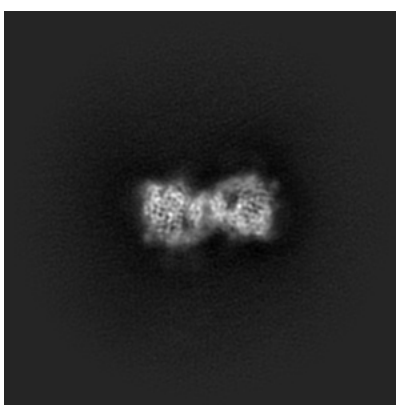
No raw map or half-maps were deposited for this entry and therefore no images, graphs, etc. pertaining to the raw map can be shown.

6.1 Orthogonal projections [i](#)

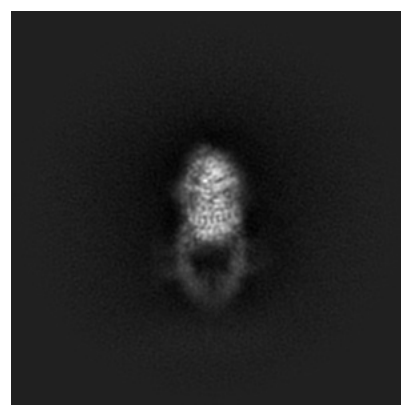
6.1.1 Primary map



X



Y

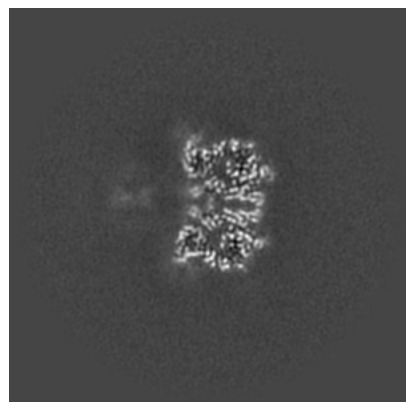


Z

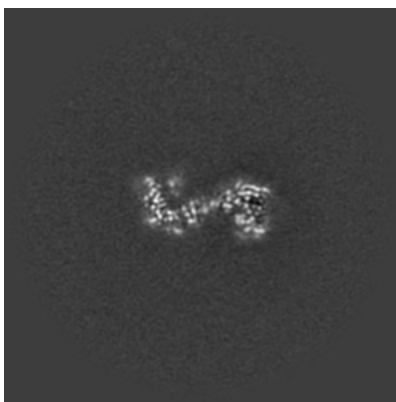
The images above show the map projected in three orthogonal directions.

6.2 Central slices [i](#)

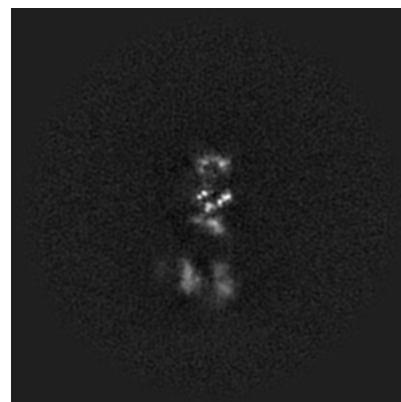
6.2.1 Primary map



X Index: 150



Y Index: 150

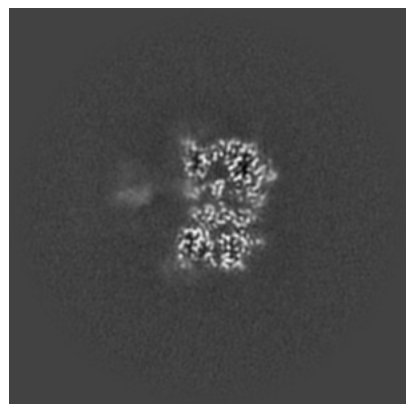


Z Index: 150

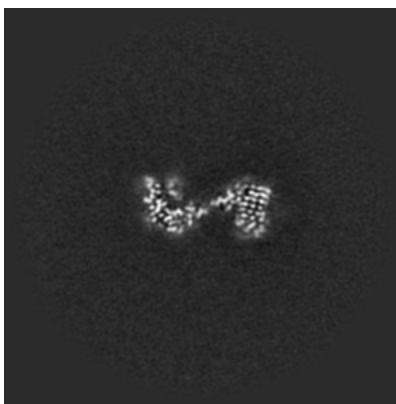
The images above show central slices of the map in three orthogonal directions.

6.3 Largest variance slices [i](#)

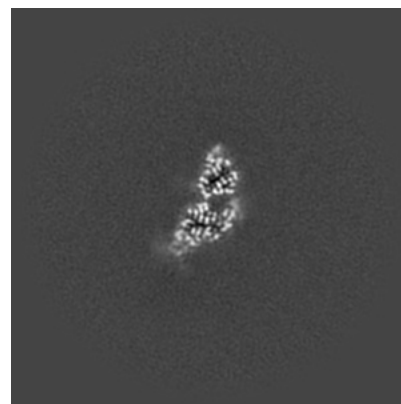
6.3.1 Primary map



X Index: 147



Y Index: 148

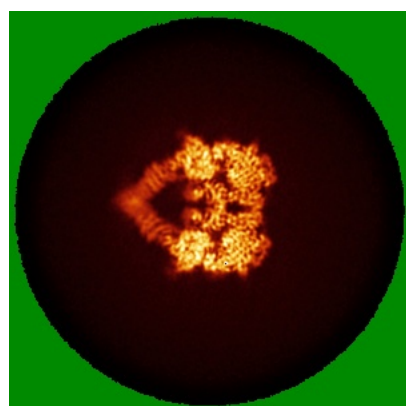


Z Index: 124

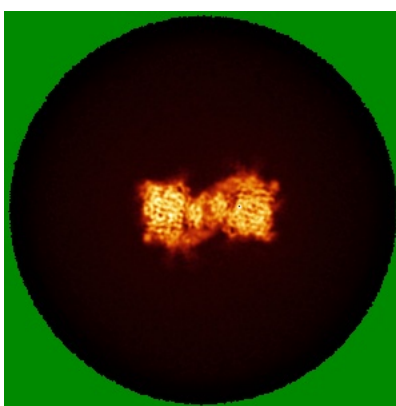
The images above show the largest variance slices of the map in three orthogonal directions.

6.4 Orthogonal standard-deviation projections (False-color) [i](#)

6.4.1 Primary map



X



Y

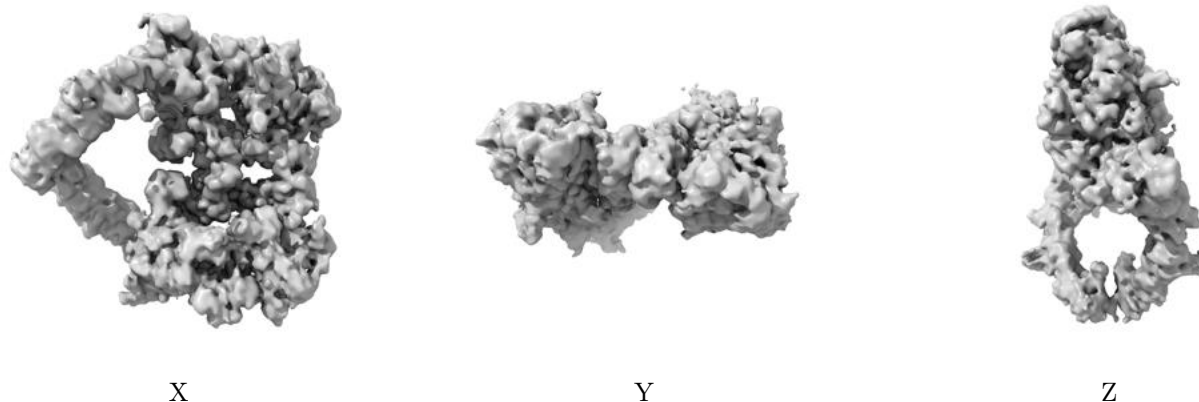


Z

The images above show the map standard deviation projections with false color in three orthogonal directions. Minimum values are shown in green, max in blue, and dark to light orange shades represent small to large values respectively.

6.5 Orthogonal surface views [i](#)

6.5.1 Primary map



The images above show the 3D surface view of the map at the recommended contour level 0.2. These images, in conjunction with the slice images, may facilitate assessment of whether an appropriate contour level has been provided.

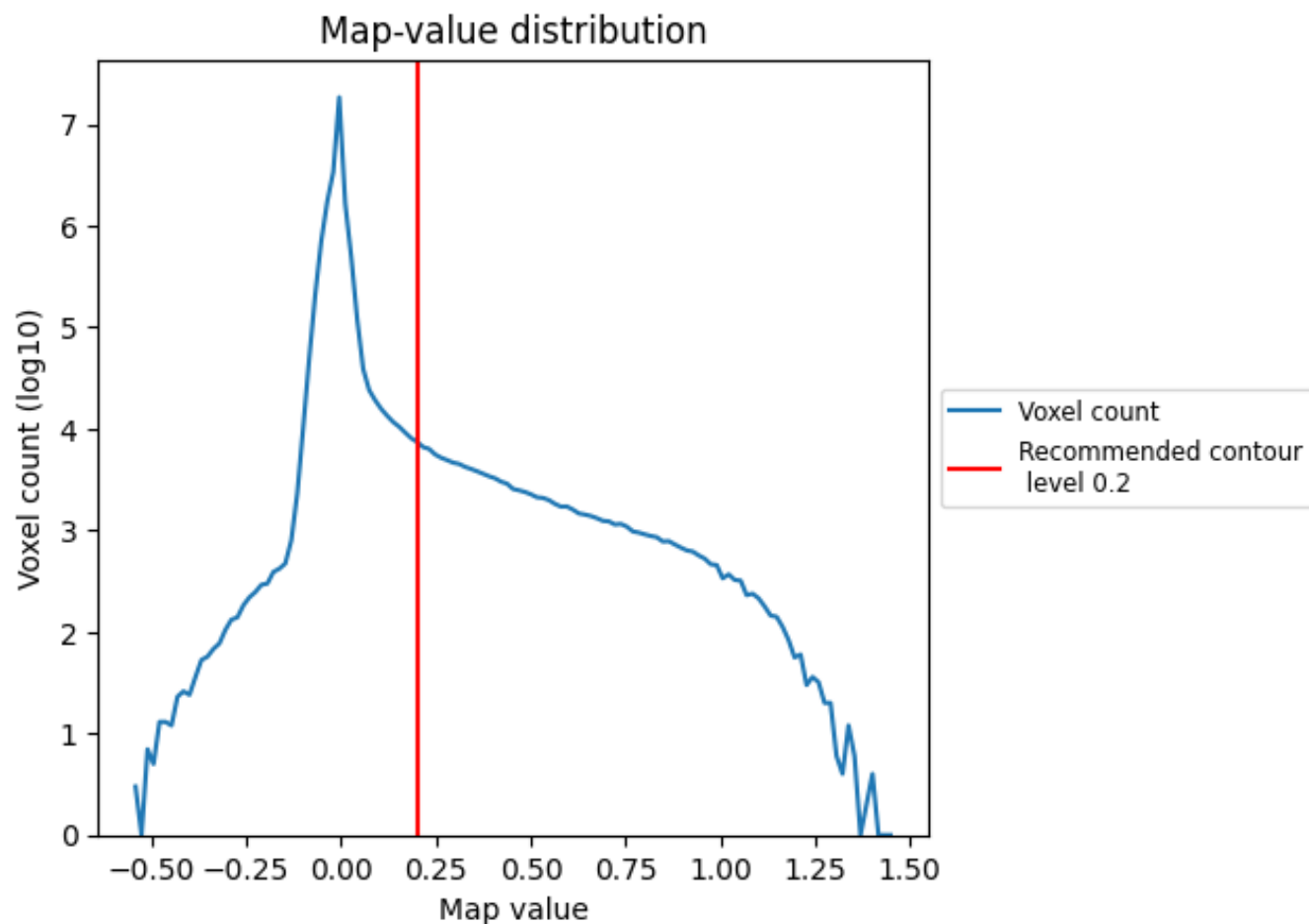
6.6 Mask visualisation [i](#)

This section was not generated. No masks/segmentation were deposited.

7 Map analysis [i](#)

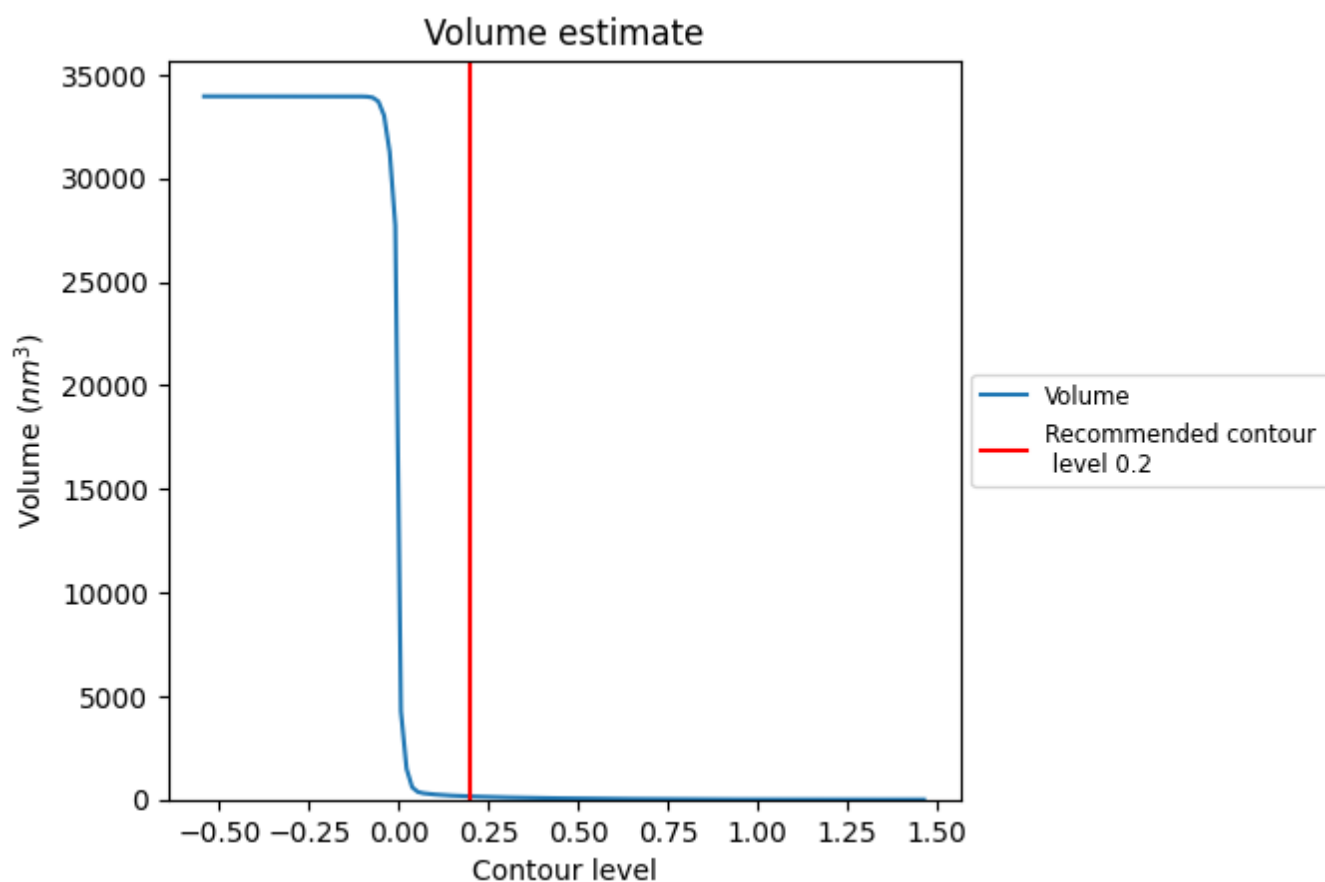
This section contains the results of statistical analysis of the map.

7.1 Map-value distribution [i](#)



The map-value distribution is plotted in 128 intervals along the x-axis. The y-axis is logarithmic. A spike in this graph at zero usually indicates that the volume has been masked.

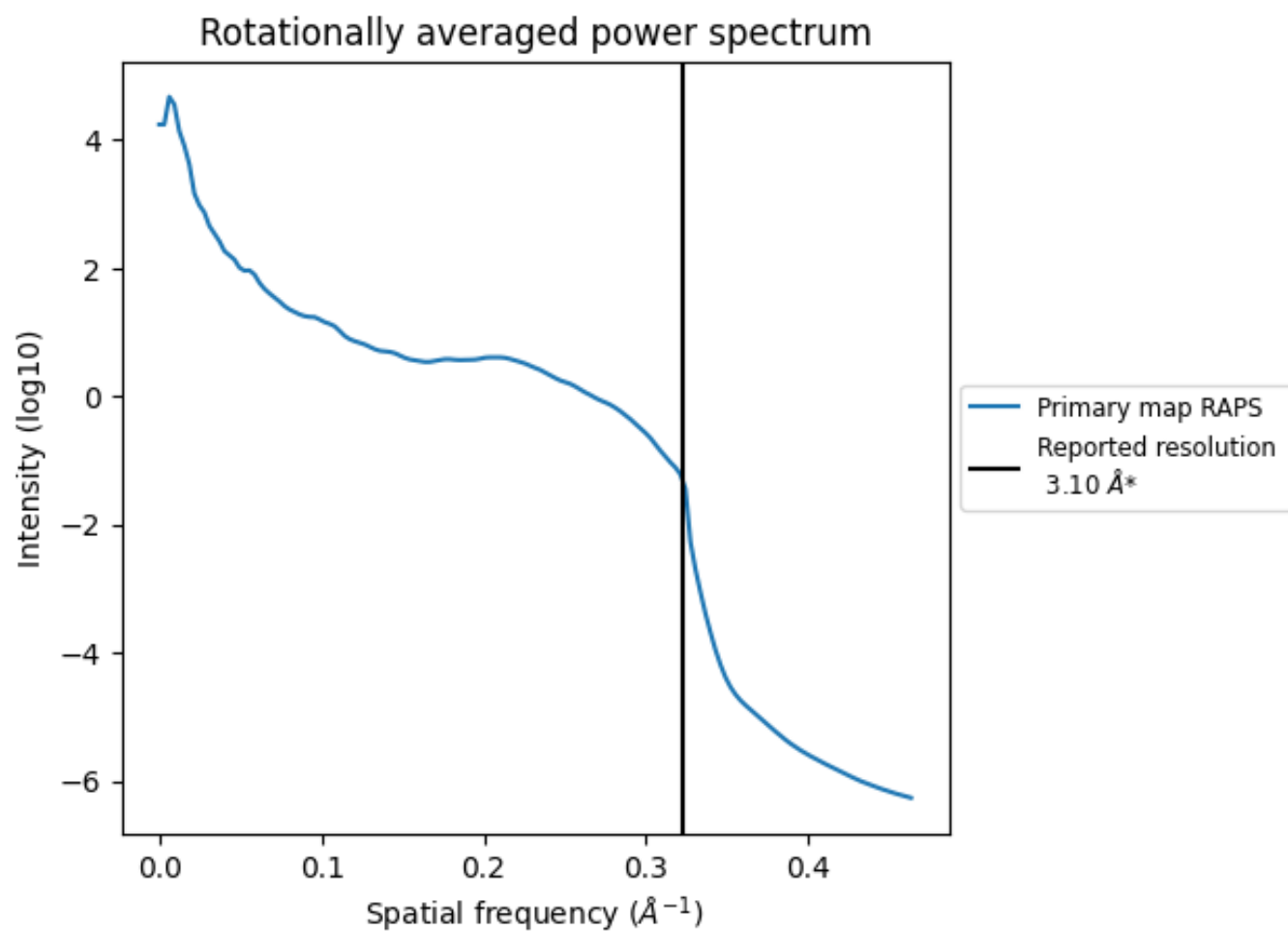
7.2 Volume estimate [i](#)



The volume at the recommended contour level is 153 nm³; this corresponds to an approximate mass of 138 kDa.

The volume estimate graph shows how the enclosed volume varies with the contour level. The recommended contour level is shown as a vertical line and the intersection between the line and the curve gives the volume of the enclosed surface at the given level.

7.3 Rotationally averaged power spectrum ⓘ



*Reported resolution corresponds to spatial frequency of 0.323 Å⁻¹

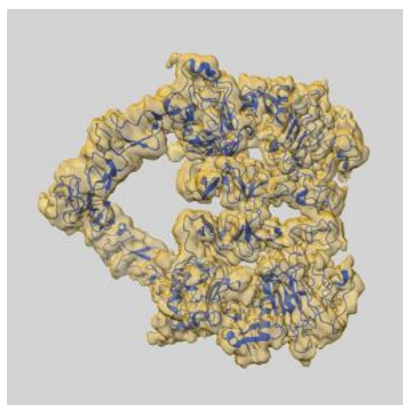
8 Fourier-Shell correlation

This section was not generated. No FSC curve or half-maps provided.

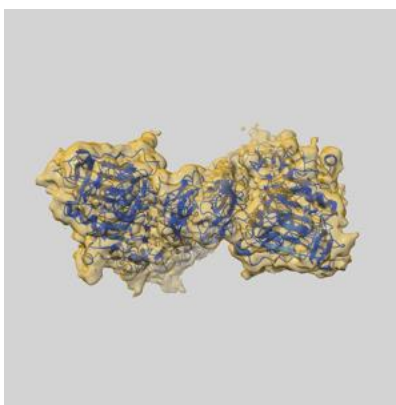
9 Map-model fit [i](#)

This section contains information regarding the fit between EMDB map EMD-25522 and PDB model 7SYD. Per-residue inclusion information can be found in [section 3](#) on [page 4](#).

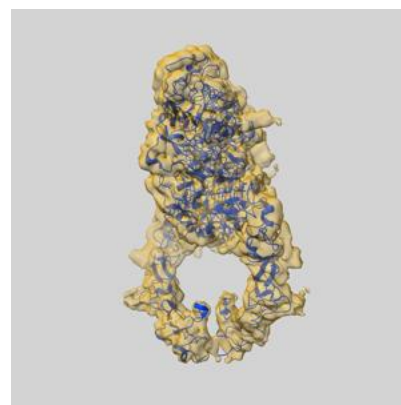
9.1 Map-model overlay [i](#)



X



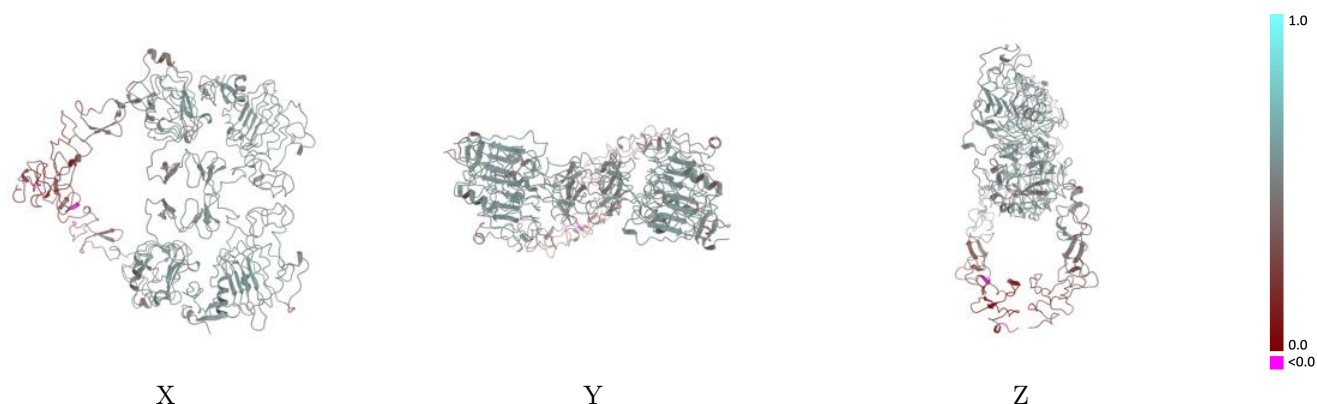
Y



Z

The images above show the 3D surface view of the map at the recommended contour level 0.2 at 50% transparency in yellow overlaid with a ribbon representation of the model coloured in blue. These images allow for the visual assessment of the quality of fit between the atomic model and the map.

9.2 Q-score mapped to coordinate model [i](#)



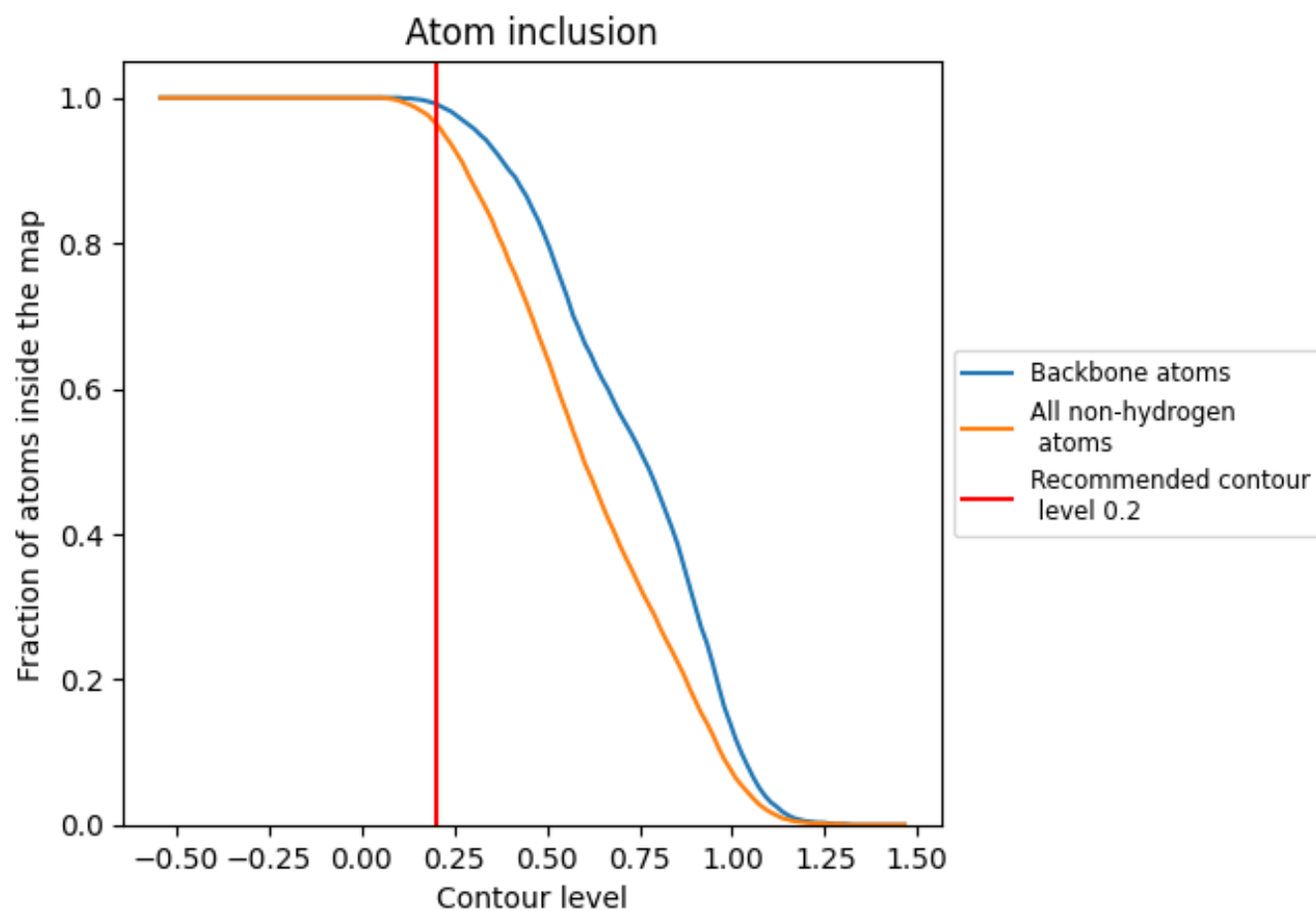
The images above show the model with each residue coloured according to its Q-score. This shows their resolvability in the map with higher Q-score values reflecting better resolvability. Please note: Q-score is calculating the resolvability of atoms, and thus high values are only expected at resolutions at which atoms can be resolved. Low Q-score values may therefore be expected for many entries.

9.3 Atom inclusion mapped to coordinate model [i](#)



The images above show the model with each residue coloured according to its atom inclusion. This shows to what extent they are inside the map at the recommended contour level (0.2).

9.4 Atom inclusion [i](#)



At the recommended contour level, 99% of all backbone atoms, 96% of all non-hydrogen atoms, are inside the map.

9.5 Map-model fit summary ⓘ

The table lists the average atom inclusion at the recommended contour level (0.2) and Q-score for the entire model and for each chain.

Chain	Atom inclusion	Q-score
All	<div></div> 0.9650	<div></div> 0.4810
A	<div></div> 0.9640	<div></div> 0.4830
B	<div></div> 0.9630	<div></div> 0.4750
C	<div></div> 0.9730	<div></div> 0.5070
D	<div></div> 0.9950	<div></div> 0.5230

