



wwPDB EM Validation Summary Report ⓘ

Sep 28, 2024 – 10:29 pm BST

PDB ID : 6T63
EMDB ID : EMD-10383
Title : A model of the EIAV CA-SP hexamer (C2) from Gag-deltaMA tubes assembled at pH6
Authors : Dick, R.A.; Xu, C.; Morado, D.R.; Kravchuk, V.; Ricana, C.L.; Lyddon, T.D.; Broad, A.M.; Feathers, J.R.; Johnson, M.C.; Vogt, V.M.; Perilla, J.R.; Briggs, J.A.G.; Schur, F.K.M.
Deposited on : 2019-10-17
Resolution : 3.80 Å(reported)
Based on initial model : 2EIA

This is a wwPDB EM Validation Summary Report for a publicly released PDB entry.

We welcome your comments at validation@mail.wwpdb.org

A user guide is available at

<https://www.wwpdb.org/validation/2017/EMValidationReportHelp>

with specific help available everywhere you see the ⓘ symbol.

The types of validation reports are described at

<http://www.wwpdb.org/validation/2017/FAQs#types>.

The following versions of software and data (see [references ⓘ](#)) were used in the production of this report:

EMDB validation analysis : 0.0.1.dev113
MolProbity : 4.02b-467
Percentile statistics : 20231227.v01 (using entries in the PDB archive December 27th 2023)
MapQ : 1.9.13
Ideal geometry (proteins) : Engh & Huber (2001)
Ideal geometry (DNA, RNA) : Parkinson et al. (1996)
Validation Pipeline (wwPDB-VP) : 2.39

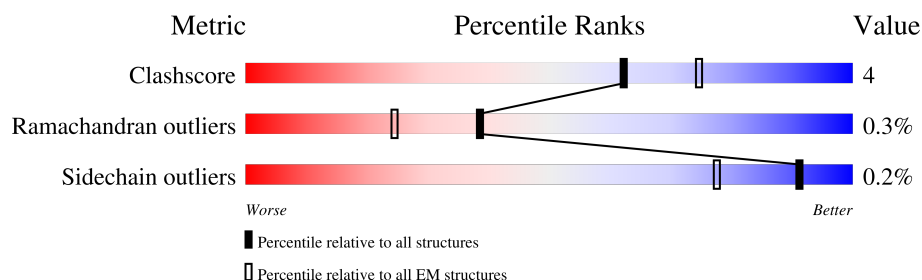
1 Overall quality at a glance

The following experimental techniques were used to determine the structure:

ELECTRON MICROSCOPY

The reported resolution of this entry is 3.80 Å.

Percentile scores (ranging between 0-100) for global validation metrics of the entry are shown in the following graphic. The table shows the number of entries on which the scores are based.



Metric	Whole archive (#Entries)	EM structures (#Entries)
Clashscore	210492	15764
Ramachandran outliers	207382	16835
Sidechain outliers	206894	16415

The table below summarises the geometric issues observed across the polymeric chains and their fit to the map. The red, orange, yellow and green segments of the bar indicate the fraction of residues that contain outliers for ≥ 3 , 2, 1 and 0 types of geometric quality criteria respectively. A grey segment represents the fraction of residues that are not modelled. The numeric value for each fraction is indicated below the corresponding segment, with a dot representing fractions $\leq 5\%$. The upper red bar (where present) indicates the fraction of residues that have poor fit to the EM map (all-atom inclusion $< 40\%$). The numeric value is given above the bar.

Mol	Chain	Length	Quality of chain
1	A	486	<div> <div>11%</div> <div>39%</div> <div>5%</div> <div>55%</div> </div>
1	B	486	<div> <div>7%</div> <div>40%</div> <div>•</div> <div>55%</div> </div>
1	C	486	<div> <div>10%</div> <div>42%</div> <div>•</div> <div>55%</div> </div>
1	D	486	<div> <div>14%</div> <div>40%</div> <div>5%</div> <div>55%</div> </div>
1	E	486	<div> <div>14%</div> <div>40%</div> <div>5%</div> <div>55%</div> </div>
1	F	486	<div> <div>5%</div> <div>40%</div> <div>•</div> <div>55%</div> </div>
1	G	486	<div> <div>9%</div> <div>42%</div> <div>•</div> <div>55%</div> </div>
1	H	486	<div> <div>9%</div> <div>41%</div> <div>•</div> <div>55%</div> </div>

Continued on next page...

Continued from previous page...

Mol	Chain	Length	Quality of chain
1	I	486	
1	J	486	
1	K	486	
1	L	486	
1	M	486	
1	N	486	
1	O	486	
1	P	486	
1	Q	486	
1	R	486	

2 Entry composition

There is only 1 type of molecule in this entry. The entry contains 30978 atoms, of which 0 are hydrogens and 0 are deuteriums.

In the tables below, the AltConf column contains the number of residues with at least one atom in alternate conformation and the Trace column contains the number of residues modelled with at most 2 atoms.

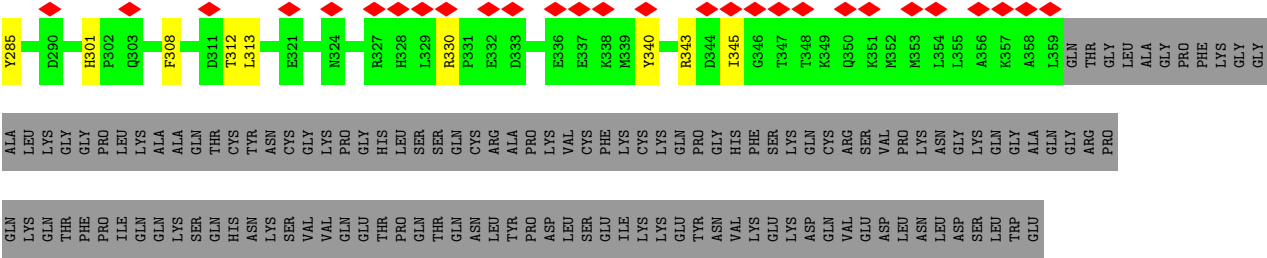
- Molecule 1 is a protein called Gag polyprotein.

Mol	Chain	Residues	Atoms					AltConf	Trace
1	A	217	Total	C	N	O	S	0	0
			1721	1081	304	324	12		
1	B	217	Total	C	N	O	S	0	0
			1721	1081	304	324	12		
1	C	217	Total	C	N	O	S	0	0
			1721	1081	304	324	12		
1	F	217	Total	C	N	O	S	0	0
			1721	1081	304	324	12		
1	D	217	Total	C	N	O	S	0	0
			1721	1081	304	324	12		
1	H	217	Total	C	N	O	S	0	0
			1721	1081	304	324	12		
1	I	217	Total	C	N	O	S	0	0
			1721	1081	304	324	12		
1	E	217	Total	C	N	O	S	0	0
			1721	1081	304	324	12		
1	G	217	Total	C	N	O	S	0	0
			1721	1081	304	324	12		
1	J	217	Total	C	N	O	S	0	0
			1721	1081	304	324	12		
1	K	217	Total	C	N	O	S	0	0
			1721	1081	304	324	12		
1	L	217	Total	C	N	O	S	0	0
			1721	1081	304	324	12		
1	O	217	Total	C	N	O	S	0	0
			1721	1081	304	324	12		
1	M	217	Total	C	N	O	S	0	0
			1721	1081	304	324	12		
1	Q	217	Total	C	N	O	S	0	0
			1721	1081	304	324	12		
1	R	217	Total	C	N	O	S	0	0
			1721	1081	304	324	12		
1	N	217	Total	C	N	O	S	0	0
			1721	1081	304	324	12		

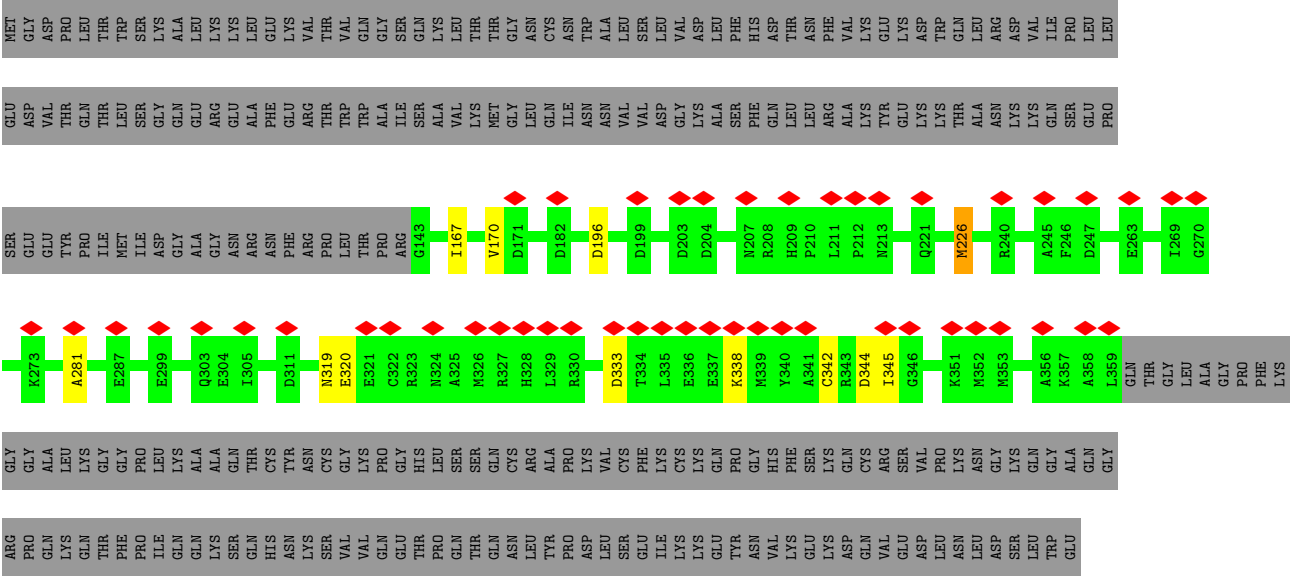
Continued on next page...

Continued from previous page...

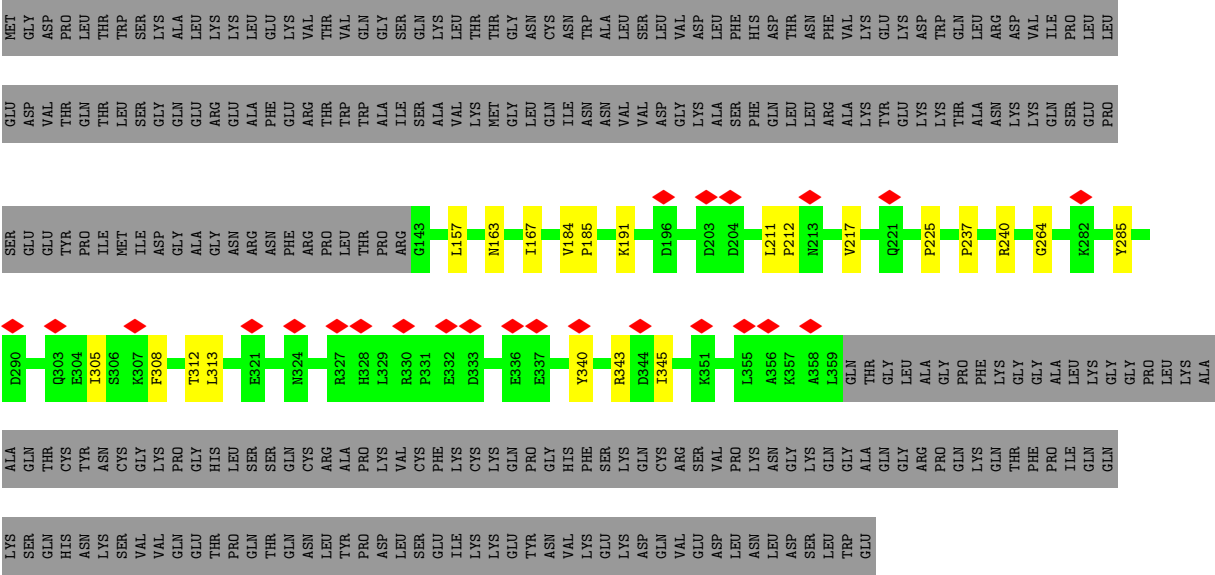
Mol	Chain	Residues	Atoms					AltConf	Trace
1	P	217	Total	C	N	O	S	0	0
			1721	1081	304	324	12		



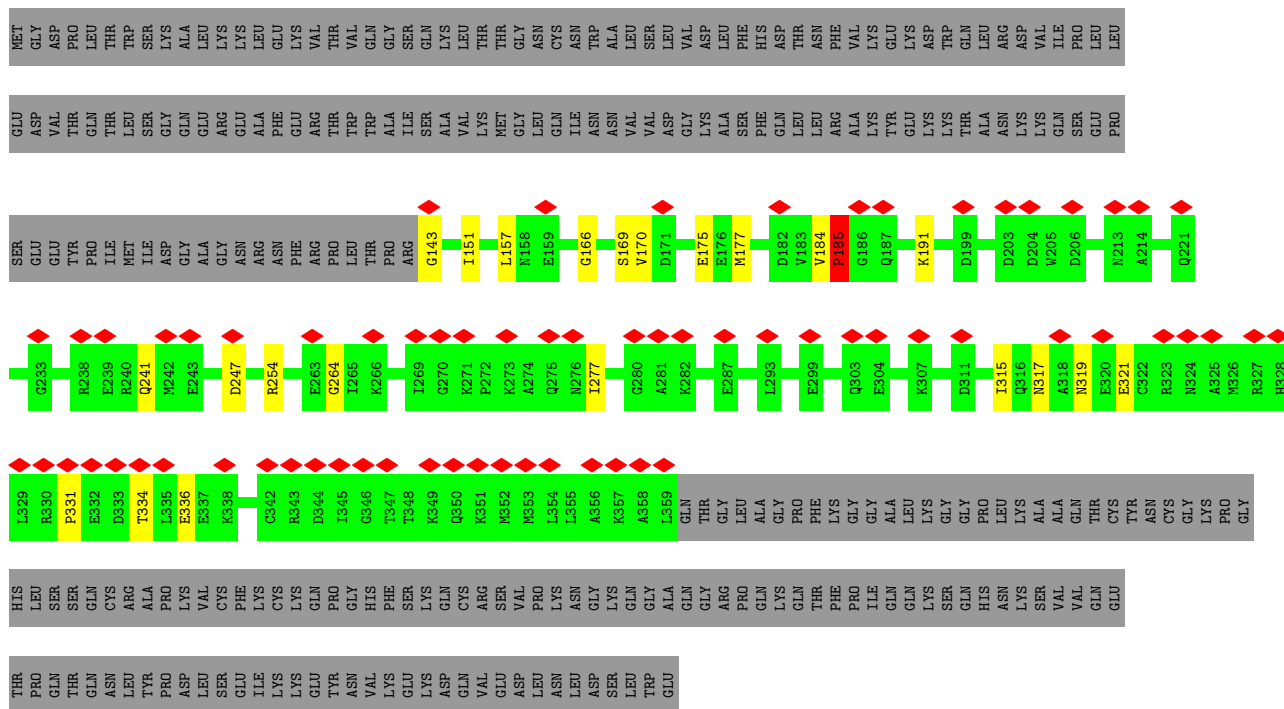
• Molecule 1: Gag polyprotein



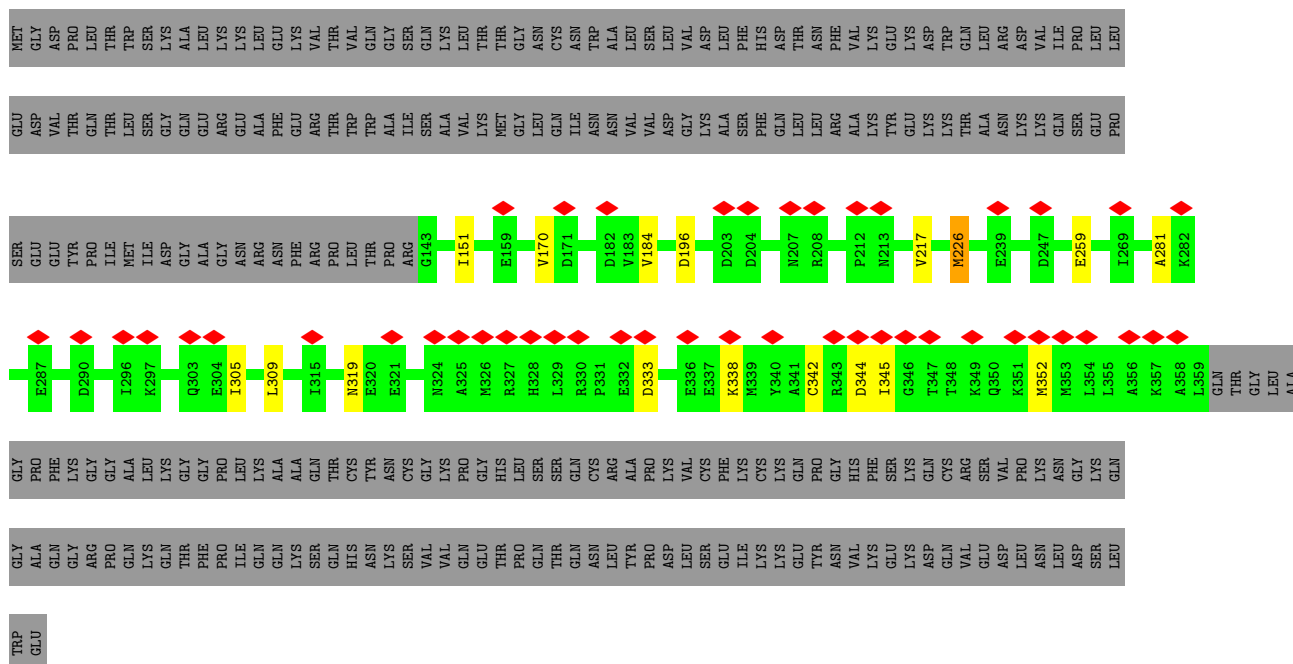
• Molecule 1: Gag polyprotein



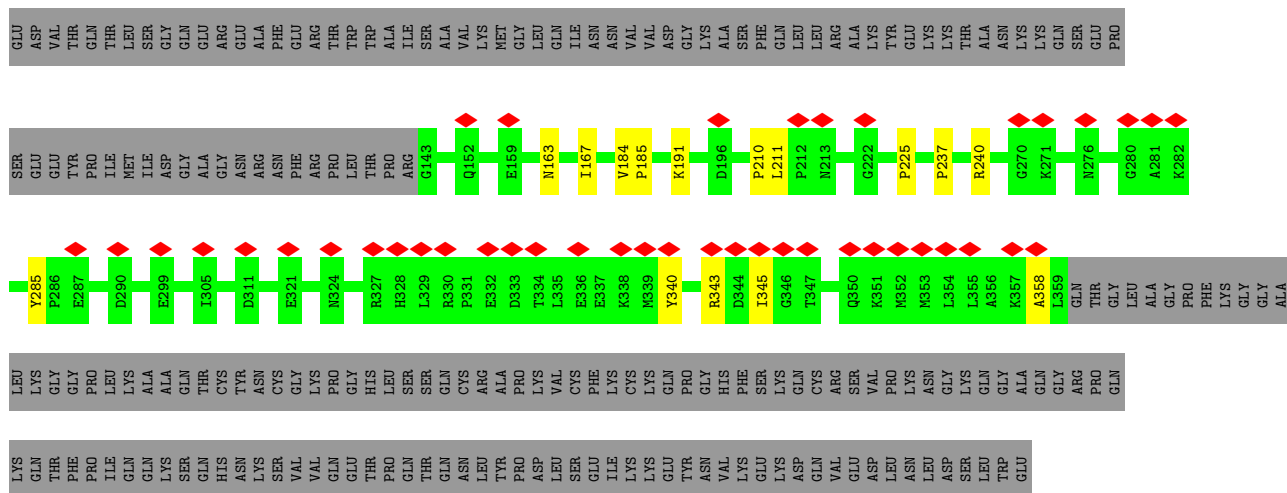
Chain D:



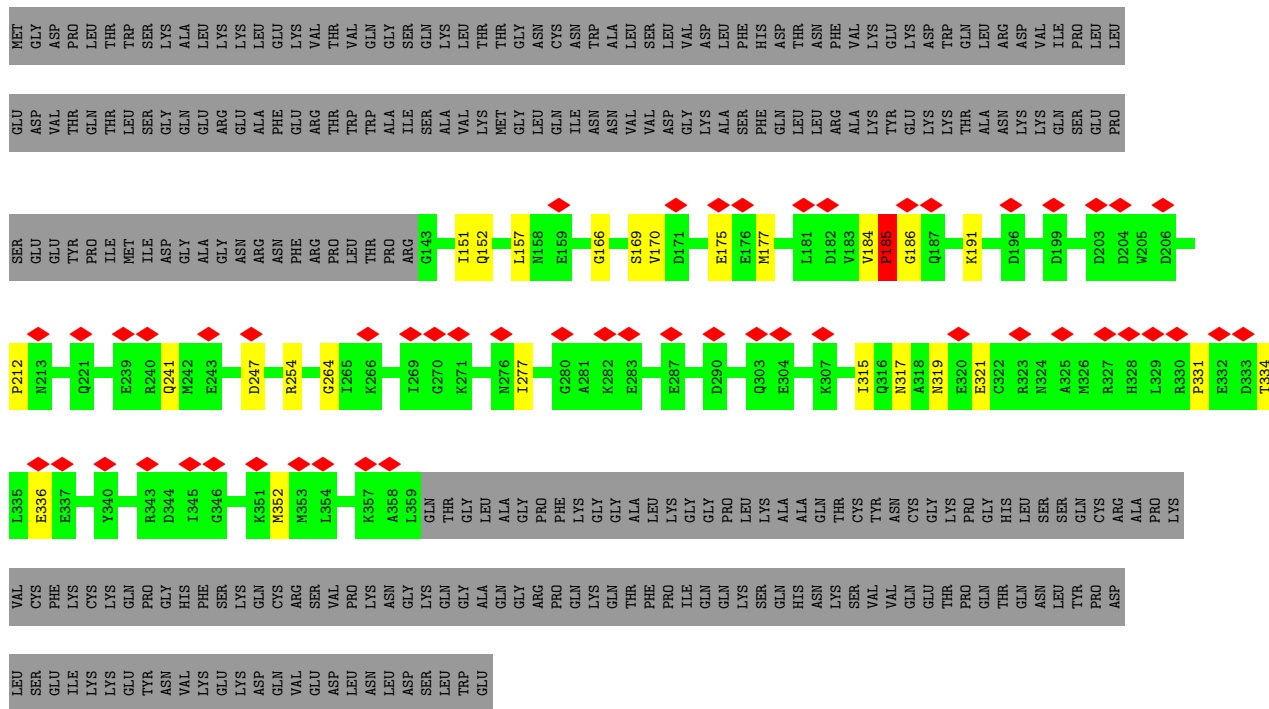
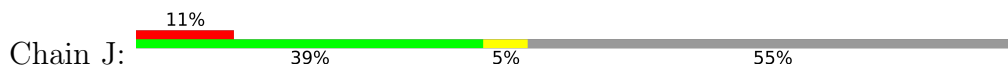
Chain H:



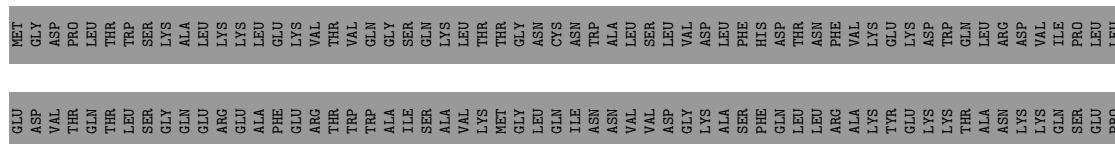
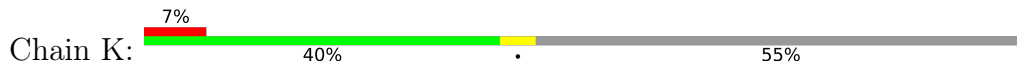
- Molecule 1: Gag polyprotein

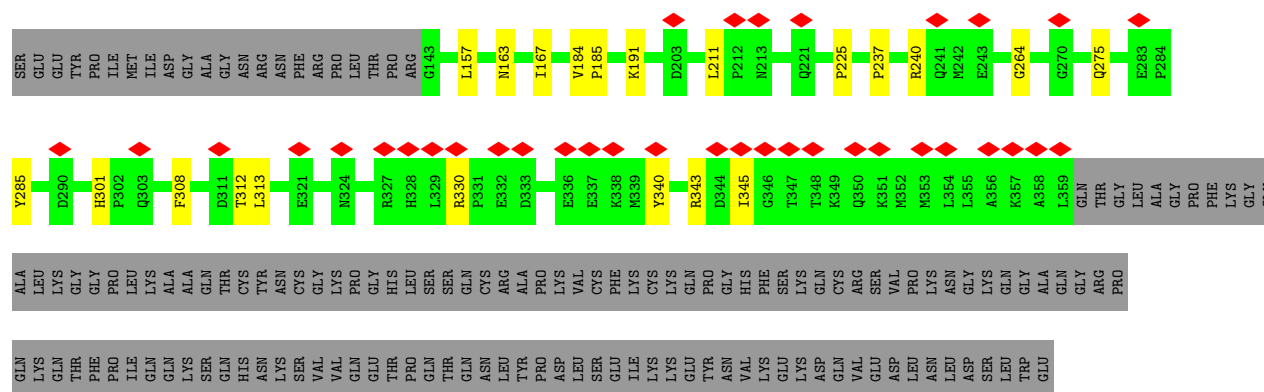


- Molecule 1: Gag polyprotein

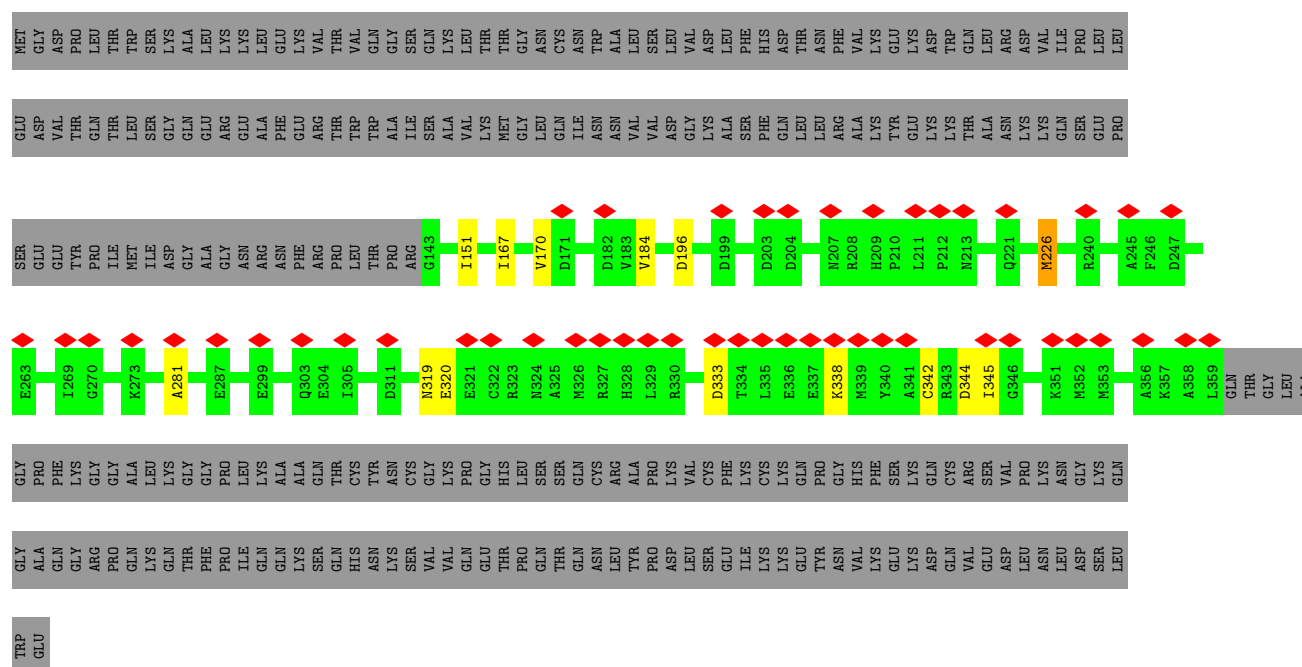


- Molecule 1: Gag polyprotein

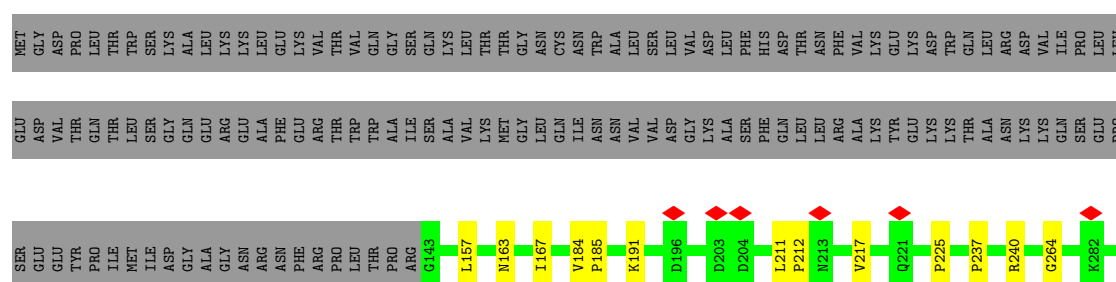
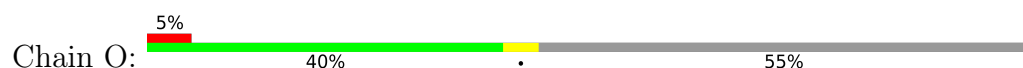




- Molecule 1: Gag polyprotein



- Molecule 1: Gag polyprotein



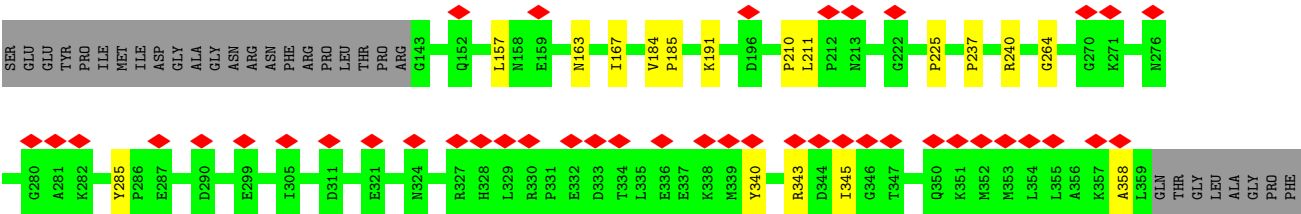
LYS
SER
GLU
VAL
PRO
GLN
GLU
THR
PRO
GLN
THR
GLN
ASN
LEU
TYR
PRO
ASP
LEU
SER
GLU
TLE
LYS
LYS
GLU
TYR
ASN
VAL
VAL
LYS
GLU
LYS
ASP
GLN
VAL
GLU
ASP
LEU
ASN
LEU
ASP
SER
LEU
TRP
GLU

● Molecule 1: Gag polyprotein



MET
GLY
ASP
THR
THR
LEU
SER
LYS
GLN
ALA
LEU
LYS
LYS
LEU
LEU
PHE
GLU
ARG
THR
TRP
VAL
GLN
GLY
SER
GLN
LYS
ALA
VAL
LYS
THR
THR
GLY
MET
LEU
CYS
GLN
ILE
SER
ASP
LEU
ASP
VAL
ASN
TRP
ALA
SER
PHE
GLN
LEU
THR
ASN
PHE
VAL
LYS
TYR
GLU
LYS
ASP
LYS
TRP
LYS
THR
GLN
ALA
ARG
ASP
VAL
TLE
PRO
LEU
LEU

GLU
ASP
VAL
THR
THR
LEU
SER
GLY
GLN
ARG
GLY
ASN
ALA
PHE
GLU
ARG
THR
TRP
VAL
GLN
GLY
PRO
ILE
SER
GLN
ALA
VAL
LYS
MET
LEU
CYS
GLN
ILE
SER
ASP
LEU
ASP
VAL
ASN
TRP
ALA
SER
PHE
GLN
LEU
THR
ASN
PHE
VAL
LYS
TYR
GLU
LYS
ASP
LYS
TRP
LYS
THR
GLN
ALA
ARG
ASP
VAL
TLE
PRO
LEU
LEU



LYS
GLY
GLY
ALA
LEU
LYS
GLY
GLY
PRO
PRO
ILE
LEU
LYS
GLN
ALA
LYS
SER
GLN
THR
HIS
CYS
TYR
ASN
CYS
GLY
LYS
PRO
GLY
GLY
HIS
LEU
SER
SER
GLN
GLN
CYS
CYS
ARG
ALA
PRO
PRO
LYS
VAL
CYS
SER
PHE
GLU
PHE
ILE
LYS
CYS
LYS
GLN
TYR
PRO
ASN
GLY
HIS
PHE
LYS
SER
GLU
LYS
ASP
GLN
CYS
VAL
ARG
SER
GLU
ASP
VAL
LEU
PRO
LYS
ASN
LEU
ASN
GLY
ASP
SER
LEU
TRP
GLU
GLN

GLY
ARG
PRO
GLN
LYS
GLN
THR
PHE
PRO
ILE
LEU
GLN
LYS
LYS
SER
GLN
HIS
CYS
TYR
ASN
CYS
SER
VAL
VAL
GLU
GLU
THR
PRO
GLN
SER
THR
GLN
GLN
ASN
CYS
LEU
TYR
PRO
ASP
LEU
SER
CYS
GLU
PHE
ILE
LYS
LYS
GLU
TYR
ASN
VAL
LYS
GLU
SER
GLY
PHE
LYS
SER
LYS
ASP
GLN
VAL
ARG
SER
GLU
ASP
VAL
LEU
PRO
LYS
ASN
LEU
ASN
GLY
ASP
SER
LEU
TRP
GLU
GLN

4 Experimental information

Property	Value	Source
EM reconstruction method	SUBTOMOGRAM AVERAGING	Depositor
Imposed symmetry	POINT, C2	Depositor
Number of subtomograms used	112929	Depositor
Resolution determination method	FSC 0.143 CUT-OFF	Depositor
CTF correction method	PHASE FLIPPING AND AMPLITUDE CORRECTION; CTF-correction was performed using NOVACTF	Depositor
Microscope	FEI TITAN KRIOS	Depositor
Voltage (kV)	300	Depositor
Electron dose ($e^-/\text{\AA}^2$)	3.4	Depositor
Minimum defocus (nm)	-1500	Depositor
Maximum defocus (nm)	-3500	Depositor
Magnification	130000	Depositor
Image detector	GATAN K2 QUANTUM (4k x 4k)	Depositor
Maximum map value	2.183	Depositor
Minimum map value	-1.578	Depositor
Average map value	0.000	Depositor
Map value standard deviation	0.195	Depositor
Recommended contour level	0.499	Depositor
Map size (\AA)	245.676, 245.676, 245.676	wwPDB
Map dimensions	236, 236, 236	wwPDB
Map angles ($^\circ$)	90.0, 90.0, 90.0	wwPDB
Pixel spacing (\AA)	1.041, 1.041, 1.041	Depositor

5 Model quality

5.1 Standard geometry

The Z score for a bond length (or angle) is the number of standard deviations the observed value is removed from the expected value. A bond length (or angle) with $|Z| > 5$ is considered an outlier worth inspection. RMSZ is the root-mean-square of all Z scores of the bond lengths (or angles).

Mol	Chain	Bond lengths		Bond angles	
		RMSZ	# Z >5	RMSZ	# Z >5
1	A	0.31	0/1755	0.52	0/2375
1	B	0.31	0/1755	0.51	0/2375
1	C	0.30	0/1755	0.53	1/2375 (0.0%)
1	D	0.31	0/1755	0.52	0/2375
1	E	0.31	0/1755	0.52	0/2375
1	F	0.31	0/1755	0.51	0/2375
1	G	0.31	0/1755	0.51	0/2375
1	H	0.31	0/1755	0.53	1/2375 (0.0%)
1	I	0.30	0/1755	0.53	1/2375 (0.0%)
1	J	0.31	0/1755	0.52	0/2375
1	K	0.31	0/1755	0.51	0/2375
1	L	0.30	0/1755	0.53	1/2375 (0.0%)
1	M	0.31	0/1755	0.52	0/2375
1	N	0.31	0/1755	0.52	0/2375
1	O	0.31	0/1755	0.51	0/2375
1	P	0.31	0/1755	0.51	0/2375
1	Q	0.30	0/1755	0.53	1/2375 (0.0%)
1	R	0.30	0/1755	0.53	1/2375 (0.0%)
All	All	0.31	0/31590	0.52	6/42750 (0.0%)

Chiral center outliers are detected by calculating the chiral volume of a chiral center and verifying if the center is modelled as a planar moiety or with the opposite hand. A planarity outlier is detected by checking planarity of atoms in a peptide group, atoms in a mainchain group or atoms of a sidechain that are expected to be planar.

Mol	Chain	#Chirality outliers	#Planarity outliers
1	A	0	1
1	D	0	1
1	E	0	1
1	J	0	1
1	M	0	1
1	N	0	1
All	All	0	6

There are no bond length outliers.

The worst 5 of 6 bond angle outliers are listed below:

Mol	Chain	Res	Type	Atoms	Z	Observed(°)	Ideal(°)
1	H	196	ASP	CB-CG-OD2	6.26	123.93	118.30
1	R	196	ASP	CB-CG-OD2	6.24	123.92	118.30
1	I	196	ASP	CB-CG-OD2	6.23	123.91	118.30
1	L	196	ASP	CB-CG-OD2	6.18	123.86	118.30
1	C	196	ASP	CB-CG-OD2	6.18	123.86	118.30

There are no chirality outliers.

5 of 6 planarity outliers are listed below:

Mol	Chain	Res	Type	Group
1	A	185	PRO	Peptide
1	D	185	PRO	Peptide
1	E	185	PRO	Peptide
1	J	185	PRO	Peptide
1	M	185	PRO	Peptide

5.2 Too-close contacts [i](#)

In the following table, the Non-H and H(model) columns list the number of non-hydrogen atoms and hydrogen atoms in the chain respectively. The H(added) column lists the number of hydrogen atoms added and optimized by MolProbity. The Clashes column lists the number of clashes within the asymmetric unit, whereas Symm-Clashes lists symmetry-related clashes.

Mol	Chain	Non-H	H(model)	H(added)	Clashes	Symm-Clashes
1	A	1721	0	1718	35	0
1	B	1721	0	1716	18	0
1	C	1721	0	1717	11	0
1	D	1721	0	1718	18	0
1	E	1721	0	1718	31	0
1	F	1721	0	1718	17	0
1	G	1721	0	1718	12	0
1	H	1721	0	1716	14	0
1	I	1721	0	1718	20	0
1	J	1721	0	1718	35	0
1	K	1721	0	1716	18	0
1	L	1721	0	1717	12	0
1	M	1721	0	1718	21	0
1	N	1721	0	1718	31	0
1	O	1721	0	1718	17	0

Continued on next page...

Continued from previous page...

Mol	Chain	Non-H	H(model)	H(added)	Clashes	Symm-Clashes
1	P	1721	0	1718	13	0
1	Q	1721	0	1716	16	0
1	R	1721	0	1718	21	0
All	All	30978	0	30914	255	0

The all-atom clashscore is defined as the number of clashes found per 1000 atoms (including hydrogen atoms). The all-atom clashscore for this structure is 4.

The worst 5 of 255 close contacts within the same asymmetric unit are listed below, sorted by their clash magnitude.

Atom-1	Atom-2	Interatomic distance (Å)	Clash overlap (Å)
1:A:170:VAL:HG11	1:C:170:VAL:HG13	1.31	1.11
1:K:330:ARG:NH1	1:R:340:TYR:CD1	1.91	1.10
1:J:170:VAL:HG11	1:L:170:VAL:HG13	1.30	1.04
1:B:330:ARG:NH1	1:I:340:TYR:CD1	1.91	1.03
1:I:170:VAL:HG13	1:E:170:VAL:HG11	1.44	0.98

There are no symmetry-related clashes.

5.3 Torsion angles ⓘ

5.3.1 Protein backbone ⓘ

In the following table, the Percentiles column shows the percent Ramachandran outliers of the chain as a percentile score with respect to all PDB entries followed by that with respect to all EM entries.

The Analysed column shows the number of residues for which the backbone conformation was analysed, and the total number of residues.

Mol	Chain	Analysed	Favoured	Allowed	Outliers	Percentiles
1	A	215/486 (44%)	199 (93%)	15 (7%)	1 (0%)	25 58
1	B	215/486 (44%)	201 (94%)	13 (6%)	1 (0%)	25 58
1	C	215/486 (44%)	197 (92%)	18 (8%)	0	100 100
1	D	215/486 (44%)	199 (93%)	15 (7%)	1 (0%)	25 58
1	E	215/486 (44%)	200 (93%)	14 (6%)	1 (0%)	25 58
1	F	215/486 (44%)	201 (94%)	13 (6%)	1 (0%)	25 58
1	G	215/486 (44%)	201 (94%)	13 (6%)	1 (0%)	25 58

Continued on next page...

Continued from previous page...

Mol	Chain	Analysed	Favoured	Allowed	Outliers	Percentiles	
1	H	215/486 (44%)	197 (92%)	18 (8%)	0	100	100
1	I	215/486 (44%)	197 (92%)	18 (8%)	0	100	100
1	J	215/486 (44%)	199 (93%)	15 (7%)	1 (0%)	25	58
1	K	215/486 (44%)	201 (94%)	13 (6%)	1 (0%)	25	58
1	L	215/486 (44%)	197 (92%)	18 (8%)	0	100	100
1	M	215/486 (44%)	200 (93%)	14 (6%)	1 (0%)	25	58
1	N	215/486 (44%)	200 (93%)	14 (6%)	1 (0%)	25	58
1	O	215/486 (44%)	201 (94%)	13 (6%)	1 (0%)	25	58
1	P	215/486 (44%)	201 (94%)	13 (6%)	1 (0%)	25	58
1	Q	215/486 (44%)	197 (92%)	18 (8%)	0	100	100
1	R	215/486 (44%)	197 (92%)	18 (8%)	0	100	100
All	All	3870/8748 (44%)	3585 (93%)	273 (7%)	12 (0%)	38	69

5 of 12 Ramachandran outliers are listed below:

Mol	Chain	Res	Type
1	A	185	PRO
1	D	185	PRO
1	E	185	PRO
1	J	185	PRO
1	M	185	PRO

5.3.2 Protein sidechains ⓘ

In the following table, the Percentiles column shows the percent sidechain outliers of the chain as a percentile score with respect to all PDB entries followed by that with respect to all EM entries.

The Analysed column shows the number of residues for which the sidechain conformation was analysed, and the total number of residues.

Mol	Chain	Analysed	Rotameric	Outliers	Percentiles	
1	A	187/421 (44%)	187 (100%)	0	100	100
1	B	187/421 (44%)	187 (100%)	0	100	100
1	C	187/421 (44%)	186 (100%)	1 (0%)	86	90
1	D	187/421 (44%)	187 (100%)	0	100	100
1	E	187/421 (44%)	187 (100%)	0	100	100

Continued on next page...

Continued from previous page...

Mol	Chain	Analysed	Rotameric	Outliers	Percentiles	
1	F	187/421 (44%)	187 (100%)	0	100	100
1	G	187/421 (44%)	187 (100%)	0	100	100
1	H	187/421 (44%)	186 (100%)	1 (0%)	86	90
1	I	187/421 (44%)	186 (100%)	1 (0%)	86	90
1	J	187/421 (44%)	187 (100%)	0	100	100
1	K	187/421 (44%)	187 (100%)	0	100	100
1	L	187/421 (44%)	186 (100%)	1 (0%)	86	90
1	M	187/421 (44%)	187 (100%)	0	100	100
1	N	187/421 (44%)	187 (100%)	0	100	100
1	O	187/421 (44%)	187 (100%)	0	100	100
1	P	187/421 (44%)	187 (100%)	0	100	100
1	Q	187/421 (44%)	186 (100%)	1 (0%)	86	90
1	R	187/421 (44%)	186 (100%)	1 (0%)	86	90
All	All	3366/7578 (44%)	3360 (100%)	6 (0%)	91	94

5 of 6 residues with a non-rotameric sidechain are listed below:

Mol	Chain	Res	Type
1	L	226	MET
1	Q	226	MET
1	R	226	MET
1	H	226	MET
1	C	226	MET

Sometimes sidechains can be flipped to improve hydrogen bonding and reduce clashes. 5 of 76 such sidechains are listed below:

Mol	Chain	Res	Type
1	M	241	GLN
1	P	154	ASN
1	Q	207	ASN
1	R	248	GLN
1	P	279	GLN

5.3.3 RNA ⓘ

There are no RNA molecules in this entry.

5.4 Non-standard residues in protein, DNA, RNA chains [i](#)

There are no non-standard protein/DNA/RNA residues in this entry.

5.5 Carbohydrates [i](#)

There are no oligosaccharides in this entry.

5.6 Ligand geometry [i](#)

There are no ligands in this entry.

5.7 Other polymers [i](#)

There are no such residues in this entry.

5.8 Polymer linkage issues [i](#)

There are no chain breaks in this entry.

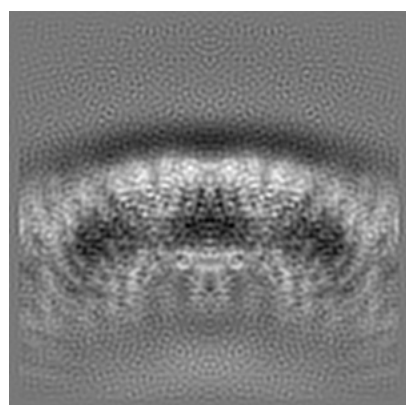
6 Map visualisation [i](#)

This section contains visualisations of the EMDB entry EMD-10383. These allow visual inspection of the internal detail of the map and identification of artifacts.

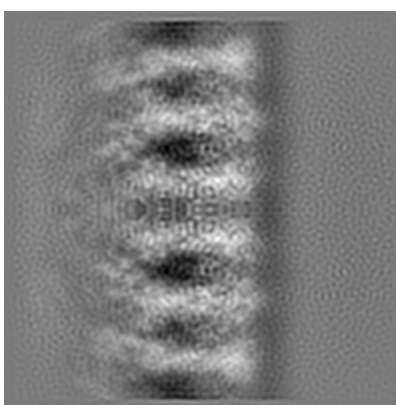
No raw map or half-maps were deposited for this entry and therefore no images, graphs, etc. pertaining to the raw map can be shown.

6.1 Orthogonal projections [i](#)

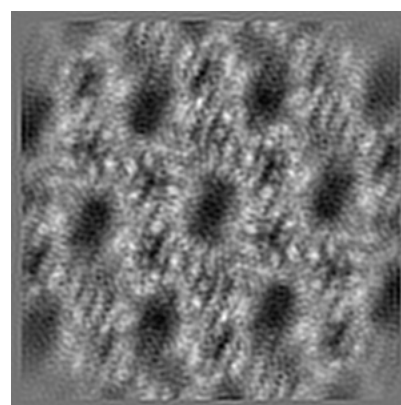
6.1.1 Primary map



X



Y

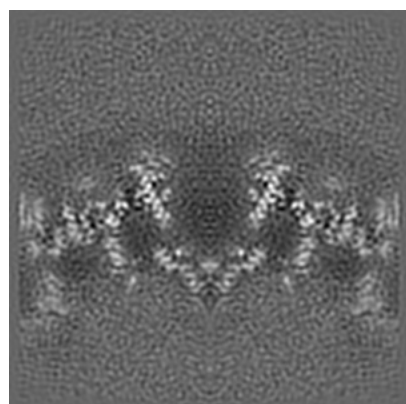


Z

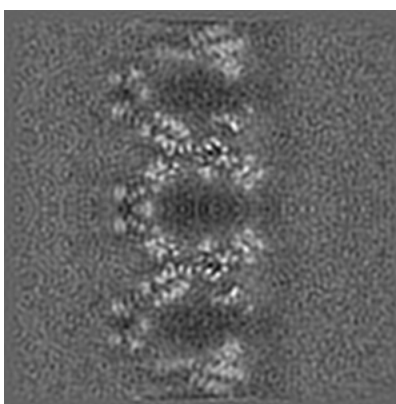
The images above show the map projected in three orthogonal directions.

6.2 Central slices [i](#)

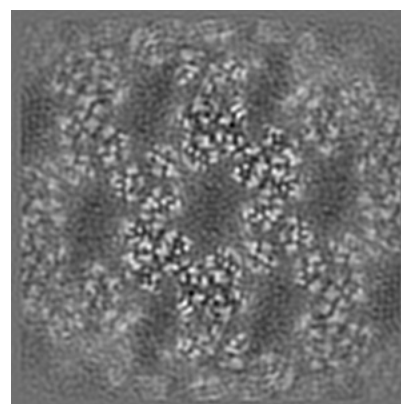
6.2.1 Primary map



X Index: 118



Y Index: 118

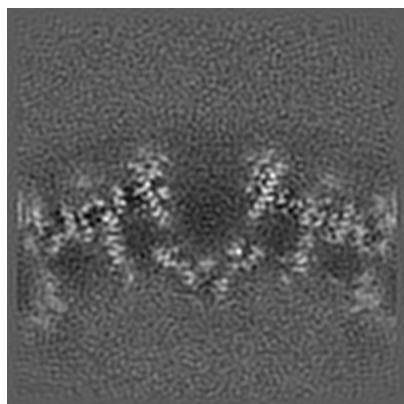


Z Index: 118

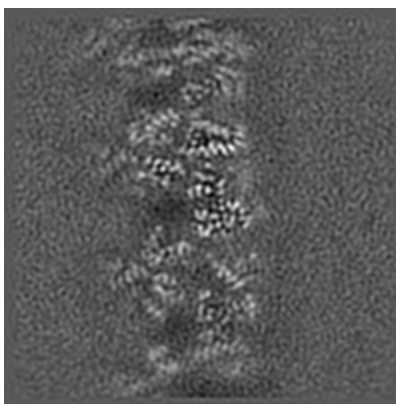
The images above show central slices of the map in three orthogonal directions.

6.3 Largest variance slices [i](#)

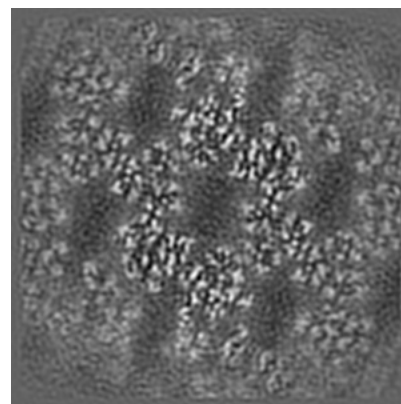
6.3.1 Primary map



X Index: 119



Y Index: 157

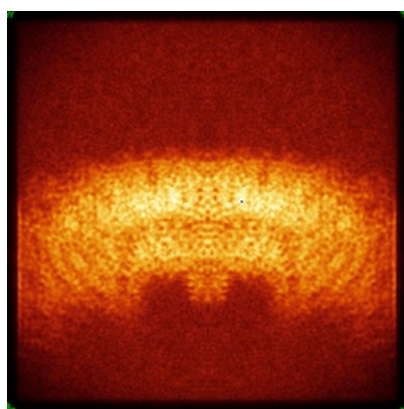


Z Index: 120

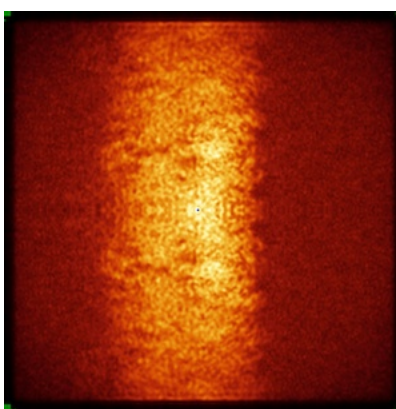
The images above show the largest variance slices of the map in three orthogonal directions.

6.4 Orthogonal standard-deviation projections (False-color) [i](#)

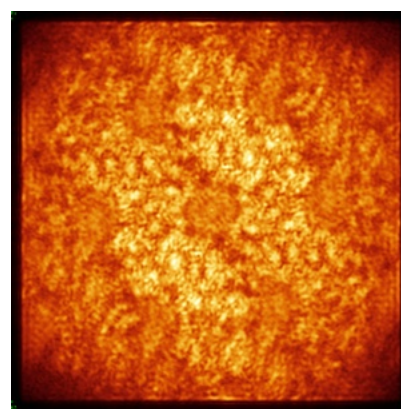
6.4.1 Primary map



X



Y

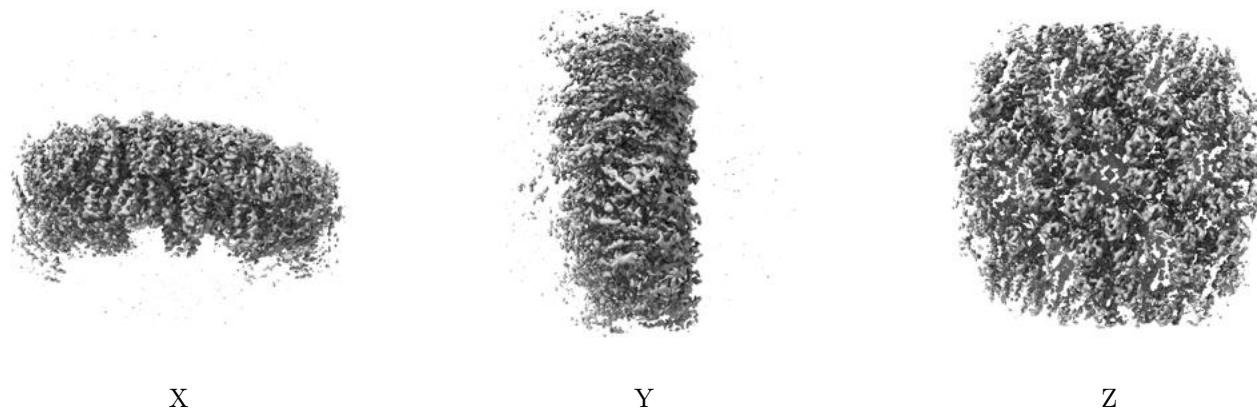


Z

The images above show the map standard deviation projections with false color in three orthogonal directions. Minimum values are shown in green, max in blue, and dark to light orange shades represent small to large values respectively.

6.5 Orthogonal surface views [i](#)

6.5.1 Primary map



The images above show the 3D surface view of the map at the recommended contour level 0.499. These images, in conjunction with the slice images, may facilitate assessment of whether an appropriate contour level has been provided.

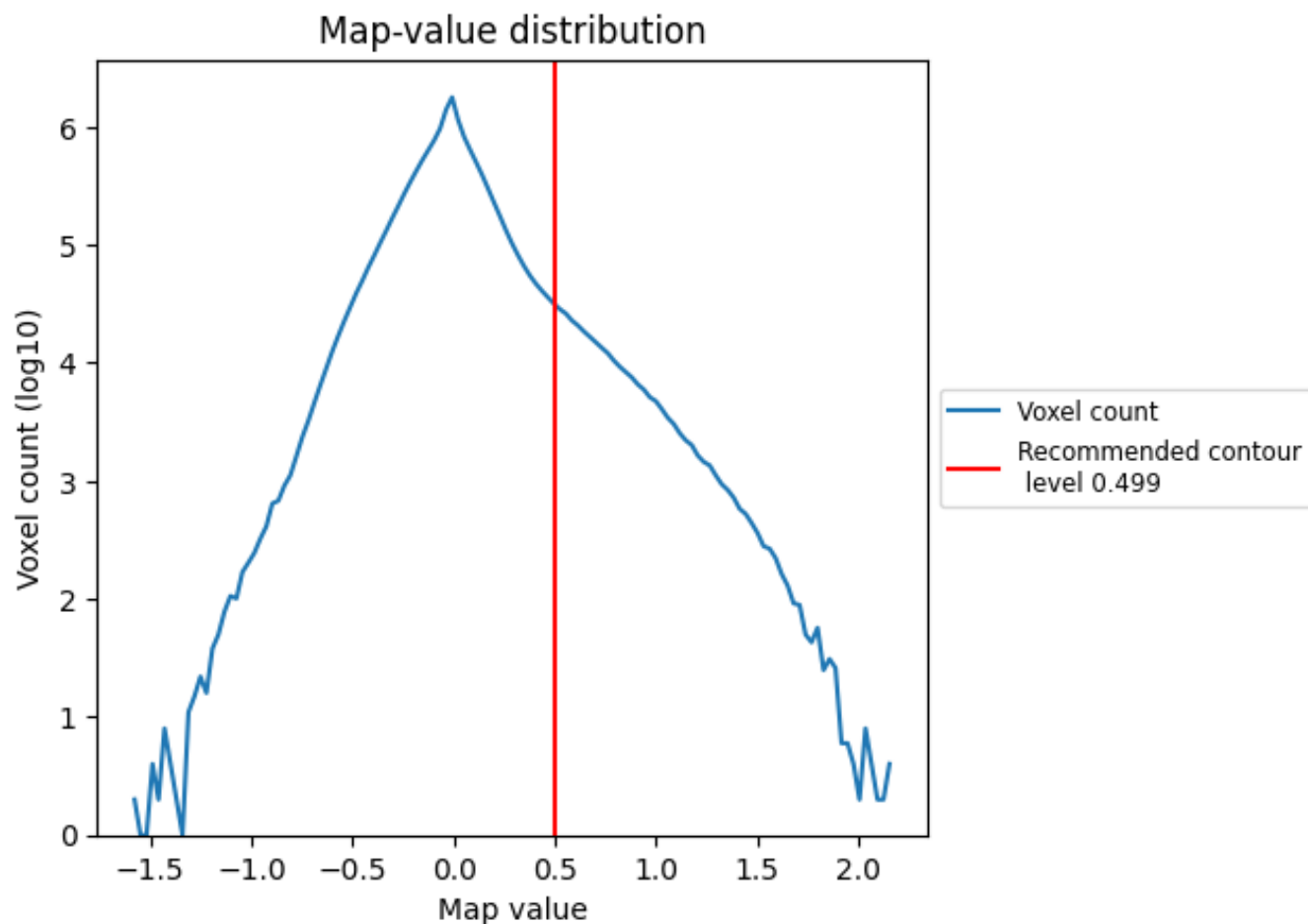
6.6 Mask visualisation [i](#)

This section was not generated. No masks/segmentation were deposited.

7 Map analysis [i](#)

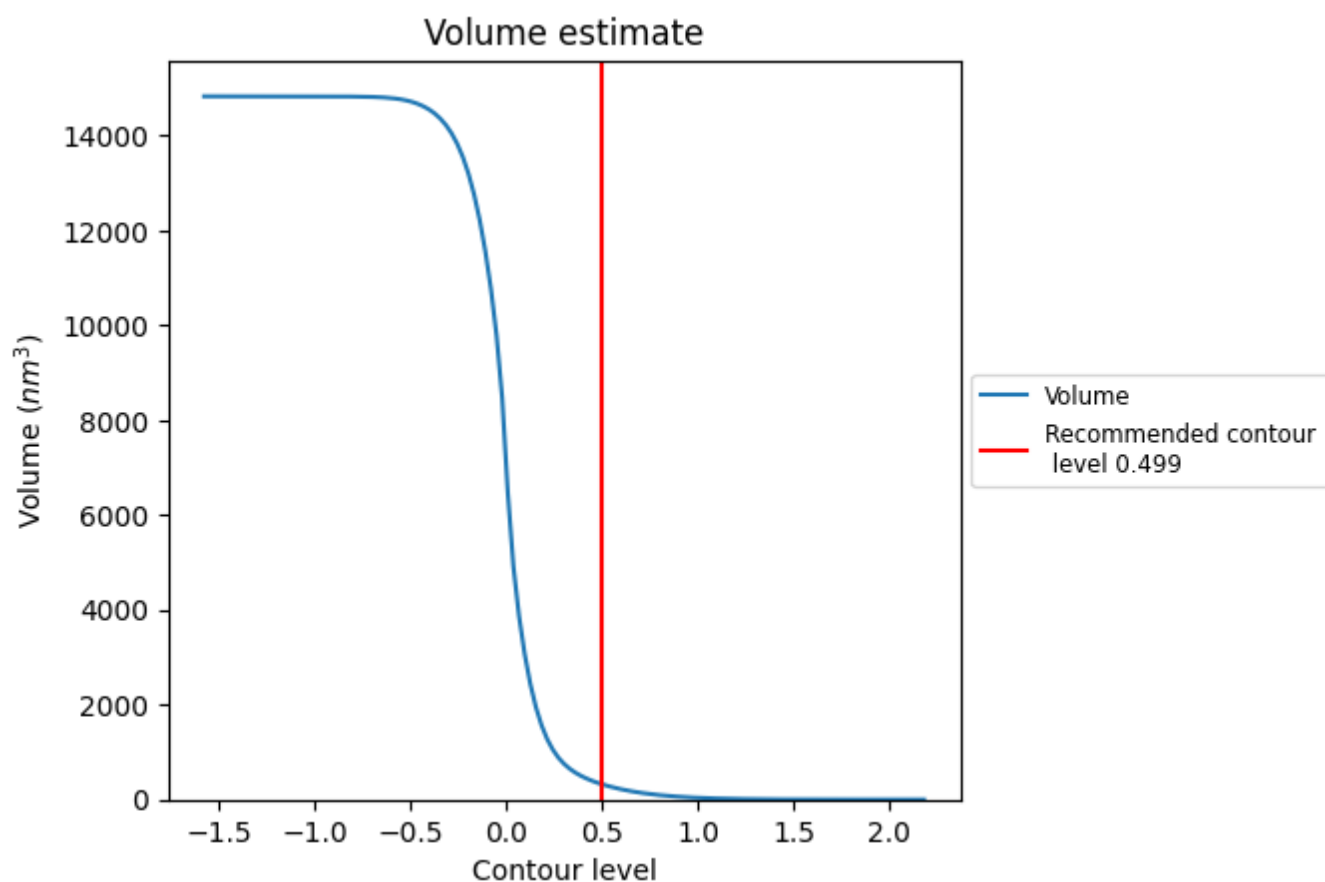
This section contains the results of statistical analysis of the map.

7.1 Map-value distribution [i](#)



The map-value distribution is plotted in 128 intervals along the x-axis. The y-axis is logarithmic. A spike in this graph at zero usually indicates that the volume has been masked.

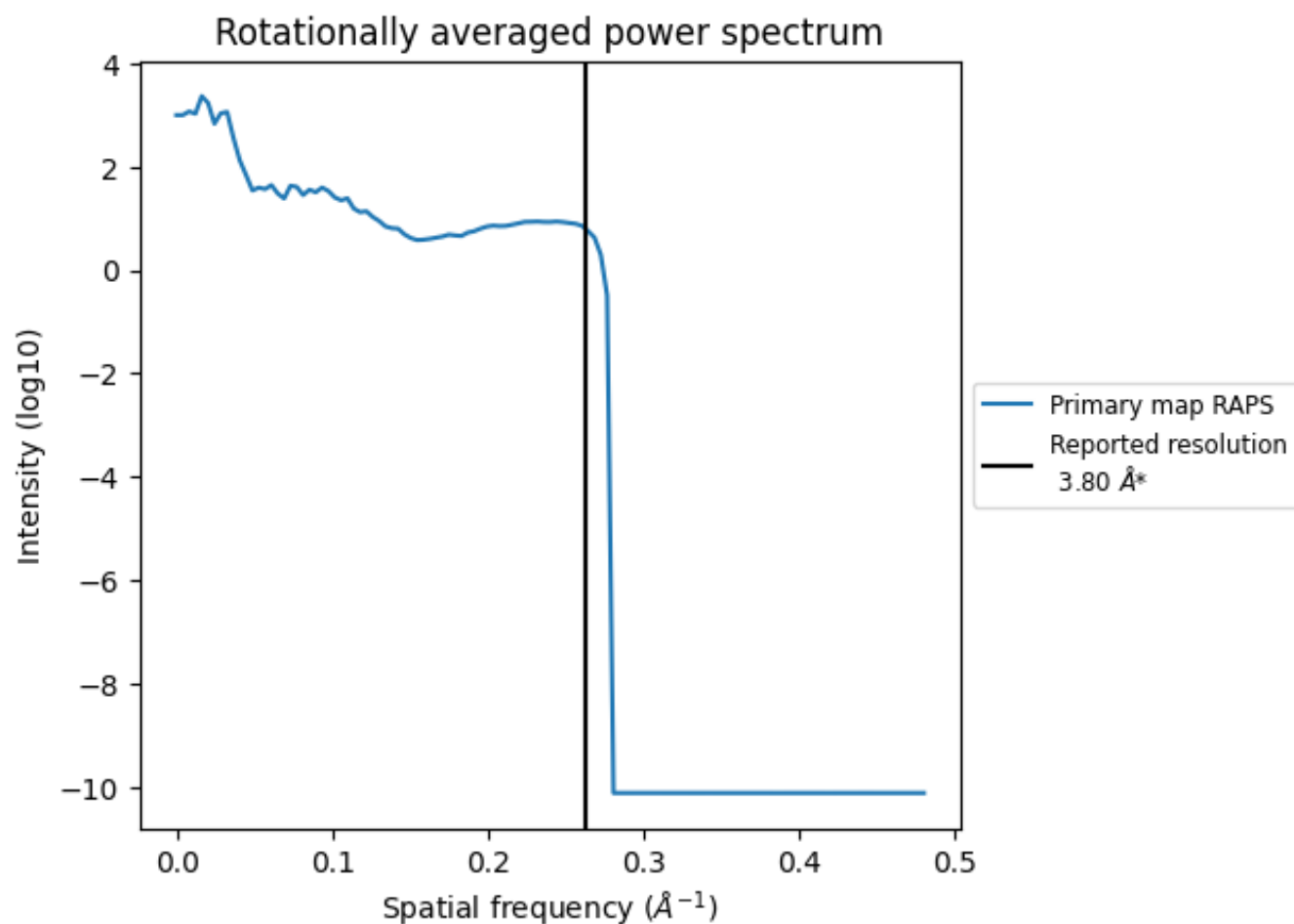
7.2 Volume estimate [i](#)



The volume at the recommended contour level is 325 nm³; this corresponds to an approximate mass of 294 kDa.

The volume estimate graph shows how the enclosed volume varies with the contour level. The recommended contour level is shown as a vertical line and the intersection between the line and the curve gives the volume of the enclosed surface at the given level.

7.3 Rotationally averaged power spectrum ⓘ



*Reported resolution corresponds to spatial frequency of 0.263 Å⁻¹

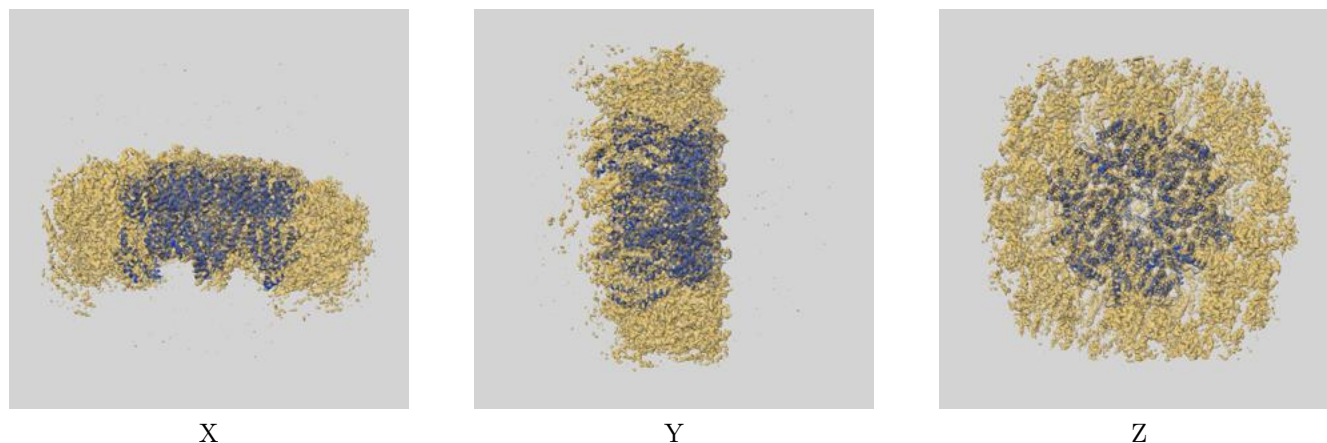
8 Fourier-Shell correlation

This section was not generated. No FSC curve or half-maps provided.

9 Map-model fit [i](#)

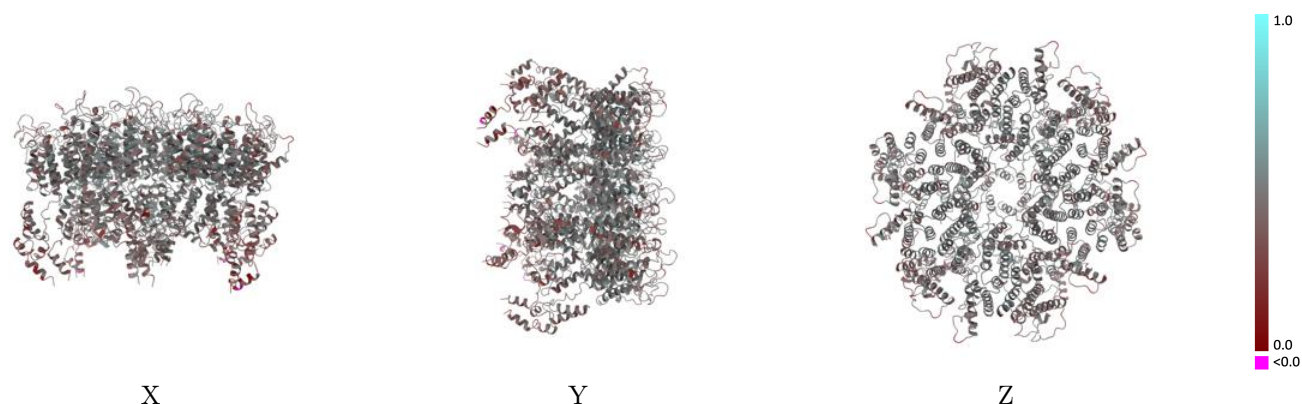
This section contains information regarding the fit between EMDB map EMD-10383 and PDB model 6T63. Per-residue inclusion information can be found in [section 3](#) on [page 6](#).

9.1 Map-model overlay [i](#)



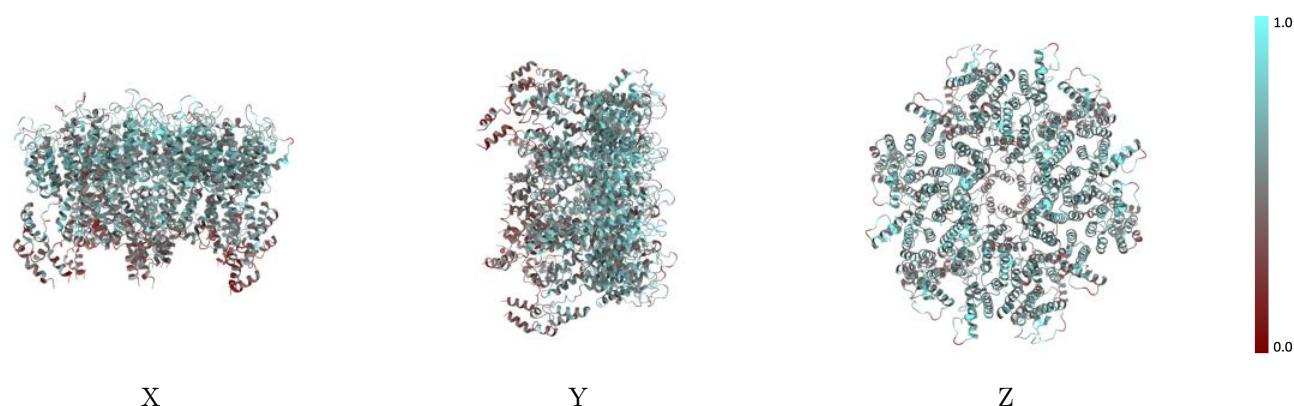
The images above show the 3D surface view of the map at the recommended contour level 0.499 at 50% transparency in yellow overlaid with a ribbon representation of the model coloured in blue. These images allow for the visual assessment of the quality of fit between the atomic model and the map.

9.2 Q-score mapped to coordinate model [i](#)



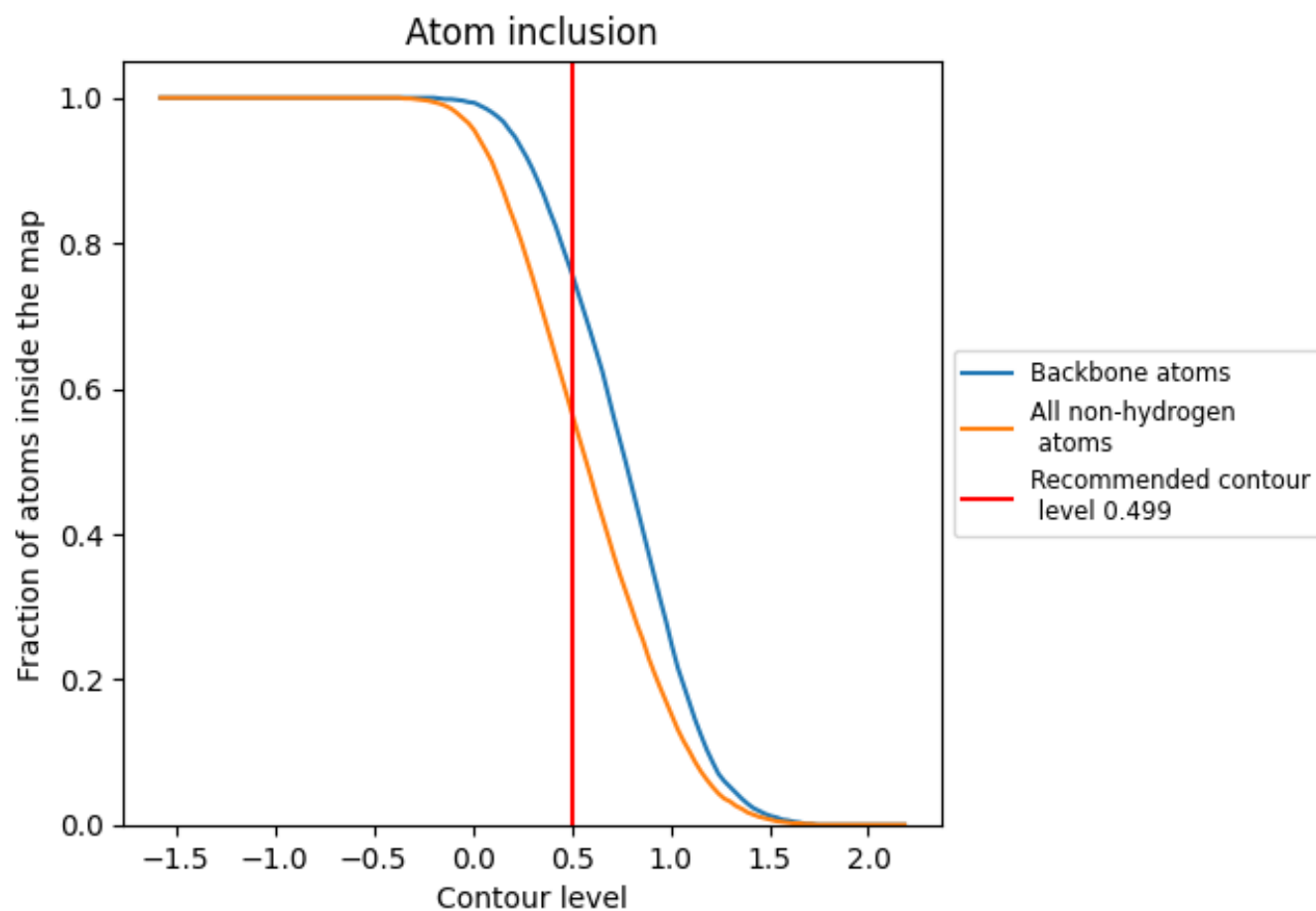
The images above show the model with each residue coloured according to its Q-score. This shows their resolvability in the map with higher Q-score values reflecting better resolvability. Please note: Q-score is calculating the resolvability of atoms, and thus high values are only expected at resolutions at which atoms can be resolved. Low Q-score values may therefore be expected for many entries.

9.3 Atom inclusion mapped to coordinate model [i](#)



The images above show the model with each residue coloured according to its atom inclusion. This shows to what extent they are inside the map at the recommended contour level (0.499).







































9.4 Atom inclusion [i](#)



At the recommended contour level, 76% of all backbone atoms, 57% of all non-hydrogen atoms, are inside the map.

9.5 Map-model fit summary

The table lists the average atom inclusion at the recommended contour level (0.499) and Q-score for the entire model and for each chain.

Chain	Atom inclusion	Q-score
All	 0.5680	 0.4350
A	 0.5620	 0.4630
B	 0.5840	 0.4220
C	 0.5550	 0.4090
D	 0.5120	 0.3900
E	 0.5140	 0.4130
F	 0.6310	 0.4830
G	 0.5670	 0.4390
H	 0.5850	 0.4260
I	 0.6070	 0.4650
J	 0.5620	 0.4670
K	 0.5840	 0.4190
L	 0.5550	 0.4080
M	 0.5120	 0.3880
N	 0.5130	 0.4160
O	 0.6290	 0.4840
P	 0.5660	 0.4400
Q	 0.5860	 0.4270
R	 0.6070	 0.4650

