



Full wwPDB EM Validation Report ⓘ

May 18, 2025 – 08:54 PM EDT

PDB ID : 7TMO / pdb_00007tmo
EMDB ID : EMD-25997
Title : V1 complex lacking subunit C from *Saccharomyces cerevisiae*, State 1
Authors : Vasanthakumar, T.; Keon, K.A.; Bueler, S.A.; Jaskolka, M.C.; Rubinstein, J.L.
Deposited on : 2022-01-19
Resolution : 3.30 Å(reported)

This is a Full wwPDB EM Validation Report for a publicly released PDB entry.

We welcome your comments at validation@mail.wwpdb.org

A user guide is available at

<https://www.wwpdb.org/validation/2017/EMValidationReportHelp>
with specific help available everywhere you see the ⓘ symbol.

The types of validation reports are described at

<http://www.wwpdb.org/validation/2017/FAQs#types>.

The following versions of software and data (see [references ⓘ](#)) were used in the production of this report:

EMDB validation analysis : 0.0.1.dev118
Mogul : 2022.3.0, CSD as543be (2022)
MolProbity : 4-5-2 with Phenix2.0rc1
buster-report : 1.1.7 (2018)
Percentile statistics : 20231227.v01 (using entries in the PDB archive December 27th 2023)
MapQ : 1.9.13
Ideal geometry (proteins) : Engh & Huber (2001)
Ideal geometry (DNA, RNA) : Parkinson et al. (1996)
Validation Pipeline (wwPDB-VP) : 2.43.1

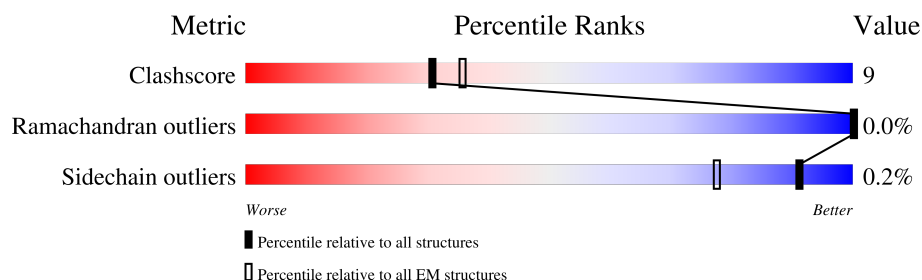
1 Overall quality at a glance

The following experimental techniques were used to determine the structure:

ELECTRON MICROSCOPY

The reported resolution of this entry is 3.30 Å.

Percentile scores (ranging between 0-100) for global validation metrics of the entry are shown in the following graphic. The table shows the number of entries on which the scores are based.










Metric	Whole archive (#Entries)	EM structures (#Entries)
Clashscore	210492	15764
Ramachandran outliers	207382	16835
Sidechain outliers	206894	16415

The table below summarises the geometric issues observed across the polymeric chains and their fit to the map. The red, orange, yellow and green segments of the bar indicate the fraction of residues that contain outliers for ≥ 3 , 2, 1 and 0 types of geometric quality criteria respectively. A grey segment represents the fraction of residues that are not modelled. The numeric value for each fraction is indicated below the corresponding segment, with a dot representing fractions $\leq 5\%$. The upper red bar (where present) indicates the fraction of residues that have poor fit to the EM map (all-atom inclusion $< 40\%$). The numeric value is given above the bar.

Mol	Chain	Length	Quality of chain
1	A	639	69% 23% 7%
1	C	639	80% 11% 8%
1	E	639	77% 15% 8%
2	B	517	67% 22% 10%
2	D	517	67% 22% 11%
2	F	517	68% 21% 11%
3	G	233	74% 12% 14%
3	I	233	82% 12% 7%

Continued on next page...

Continued from previous page...

Mol	Chain	Length	Quality of chain
3	K	233	
4	H	114	
4	J	114	
4	L	114	
5	M	256	
6	N	118	
7	P	478	

2 Entry composition

There are 10 unique types of molecules in this entry. The entry contains 31559 atoms, of which 0 are hydrogens and 0 are deuteriums.

In the tables below, the AltConf column contains the number of residues with at least one atom in alternate conformation and the Trace column contains the number of residues modelled with at most 2 atoms.

- Molecule 1 is a protein called H(+)-transporting two-sector ATPase.

Mol	Chain	Residues	Atoms					AltConf	Trace
1	A	592	Total	C	N	O	S	0	0
			4285	2761	742	764	18		
1	C	585	Total	C	N	O	S	0	0
			3690	2368	657	655	10		
1	E	590	Total	C	N	O	S	0	0
			4113	2679	717	702	15		

There are 66 discrepancies between the modelled and reference sequences:

Chain	Residue	Modelled	Actual	Comment	Reference
A	617	ASP	-	expression tag	UNP A0A6L0YX77
A	618	TYR	-	expression tag	UNP A0A6L0YX77
A	619	LYS	-	expression tag	UNP A0A6L0YX77
A	620	ASP	-	expression tag	UNP A0A6L0YX77
A	621	HIS	-	expression tag	UNP A0A6L0YX77
A	622	ASP	-	expression tag	UNP A0A6L0YX77
A	623	GLY	-	expression tag	UNP A0A6L0YX77
A	624	ASP	-	expression tag	UNP A0A6L0YX77
A	625	TYR	-	expression tag	UNP A0A6L0YX77
A	626	LYS	-	expression tag	UNP A0A6L0YX77
A	627	ASP	-	expression tag	UNP A0A6L0YX77
A	628	HIS	-	expression tag	UNP A0A6L0YX77
A	629	ASP	-	expression tag	UNP A0A6L0YX77
A	630	ILE	-	expression tag	UNP A0A6L0YX77
A	631	ASP	-	expression tag	UNP A0A6L0YX77
A	632	TYR	-	expression tag	UNP A0A6L0YX77
A	633	LYS	-	expression tag	UNP A0A6L0YX77
A	634	ASP	-	expression tag	UNP A0A6L0YX77
A	635	ASP	-	expression tag	UNP A0A6L0YX77
A	636	ASP	-	expression tag	UNP A0A6L0YX77
A	637	ASP	-	expression tag	UNP A0A6L0YX77
A	638	LYS	-	expression tag	UNP A0A6L0YX77
C	617	ASP	-	expression tag	UNP A0A6L0YX77
C	618	TYR	-	expression tag	UNP A0A6L0YX77

Continued on next page...

Continued from previous page...

Chain	Residue	Modelled	Actual	Comment	Reference
C	619	LYS	-	expression tag	UNP A0A6L0YX77
C	620	ASP	-	expression tag	UNP A0A6L0YX77
C	621	HIS	-	expression tag	UNP A0A6L0YX77
C	622	ASP	-	expression tag	UNP A0A6L0YX77
C	623	GLY	-	expression tag	UNP A0A6L0YX77
C	624	ASP	-	expression tag	UNP A0A6L0YX77
C	625	TYR	-	expression tag	UNP A0A6L0YX77
C	626	LYS	-	expression tag	UNP A0A6L0YX77
C	627	ASP	-	expression tag	UNP A0A6L0YX77
C	628	HIS	-	expression tag	UNP A0A6L0YX77
C	629	ASP	-	expression tag	UNP A0A6L0YX77
C	630	ILE	-	expression tag	UNP A0A6L0YX77
C	631	ASP	-	expression tag	UNP A0A6L0YX77
C	632	TYR	-	expression tag	UNP A0A6L0YX77
C	633	LYS	-	expression tag	UNP A0A6L0YX77
C	634	ASP	-	expression tag	UNP A0A6L0YX77
C	635	ASP	-	expression tag	UNP A0A6L0YX77
C	636	ASP	-	expression tag	UNP A0A6L0YX77
C	637	ASP	-	expression tag	UNP A0A6L0YX77
C	638	LYS	-	expression tag	UNP A0A6L0YX77
E	617	ASP	-	expression tag	UNP A0A6L0YX77
E	618	TYR	-	expression tag	UNP A0A6L0YX77
E	619	LYS	-	expression tag	UNP A0A6L0YX77
E	620	ASP	-	expression tag	UNP A0A6L0YX77
E	621	HIS	-	expression tag	UNP A0A6L0YX77
E	622	ASP	-	expression tag	UNP A0A6L0YX77
E	623	GLY	-	expression tag	UNP A0A6L0YX77
E	624	ASP	-	expression tag	UNP A0A6L0YX77
E	625	TYR	-	expression tag	UNP A0A6L0YX77
E	626	LYS	-	expression tag	UNP A0A6L0YX77
E	627	ASP	-	expression tag	UNP A0A6L0YX77
E	628	HIS	-	expression tag	UNP A0A6L0YX77
E	629	ASP	-	expression tag	UNP A0A6L0YX77
E	630	ILE	-	expression tag	UNP A0A6L0YX77
E	631	ASP	-	expression tag	UNP A0A6L0YX77
E	632	TYR	-	expression tag	UNP A0A6L0YX77
E	633	LYS	-	expression tag	UNP A0A6L0YX77
E	634	ASP	-	expression tag	UNP A0A6L0YX77
E	635	ASP	-	expression tag	UNP A0A6L0YX77
E	636	ASP	-	expression tag	UNP A0A6L0YX77
E	637	ASP	-	expression tag	UNP A0A6L0YX77
E	638	LYS	-	expression tag	UNP A0A6L0YX77

- Molecule 2 is a protein called Vacuolar proton pump subunit B.

Mol	Chain	Residues	Atoms					AltConf	Trace
2	B	464	Total	C	N	O	S	0	0
			3390	2184	599	595	12		
2	D	459	Total	C	N	O	S	0	0
			3306	2144	582	569	11		
2	F	459	Total	C	N	O	S	0	0
			3317	2137	588	583	9		

- Molecule 3 is a protein called V-type proton ATPase subunit E.

Mol	Chain	Residues	Atoms					AltConf	Trace
3	G	200	Total	C	N	O	S	0	0
			1273	818	229	224	2		
3	I	217	Total	C	N	O	S	0	0
			1326	840	248	236	2		
3	K	206	Total	C	N	O	S	0	0
			1308	843	241	222	2		

- Molecule 4 is a protein called V-type proton ATPase subunit G.

Mol	Chain	Residues	Atoms					AltConf	Trace
4	H	82	Total	C	N	O		0	0
			456	283	87	86			
4	J	108	Total	C	N	O		0	0
			570	350	111	109			
4	L	88	Total	C	N	O		0	0
			486	302	93	91			

- Molecule 5 is a protein called V-type proton ATPase subunit D.

Mol	Chain	Residues	Atoms					AltConf	Trace
5	M	214	Total	C	N	O	S	0	0
			1235	761	242	231	1		

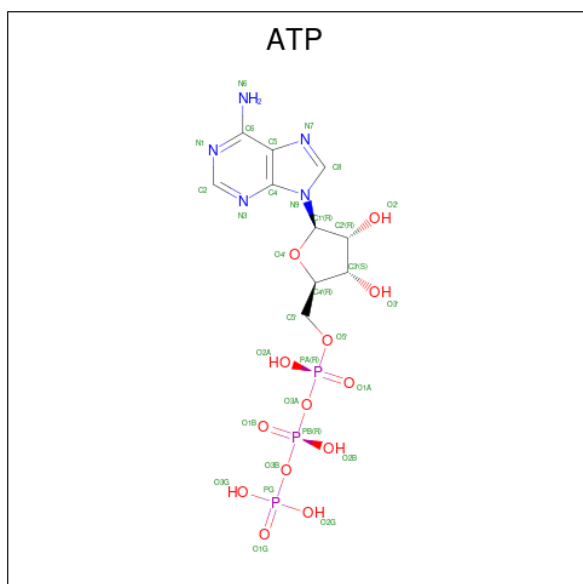
- Molecule 6 is a protein called V-type proton ATPase subunit F.

Mol	Chain	Residues	Atoms					AltConf	Trace
6	N	111	Total	C	N	O		0	0
			551	329	111	111			

- Molecule 7 is a protein called V-type proton ATPase subunit H.

Mol	Chain	Residues	Atoms				AltConf	Trace
7	P	441	Total	C	N	O	0	0
			2193	1311	441	441		

- Molecule 8 is ADENOSINE-5'-TRIPHOSPHATE (CCD ID: ATP) (formula: $C_{10}H_{16}N_5O_{13}P_3$) (labeled as "Ligand of Interest" by depositor).

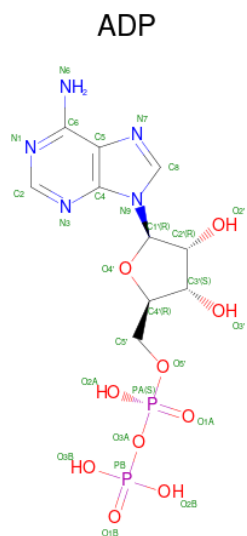


Mol	Chain	Residues	Atoms					AltConf
8	A	1	Total	C	N	O	P	0
			31	10	5	13	3	

- Molecule 9 is MAGNESIUM ION (CCD ID: MG) (formula: Mg) (labeled as "Ligand of Interest" by depositor).

Mol	Chain	Residues	Atoms		AltConf
9	A	1	Total	Mg	0
			1	1	
9	E	1	Total	Mg	0
			1	1	

- Molecule 10 is ADENOSINE-5'-DIPHOSPHATE (CCD ID: ADP) (formula: $C_{10}H_{15}N_5O_{10}P_2$) (labeled as "Ligand of Interest" by depositor).

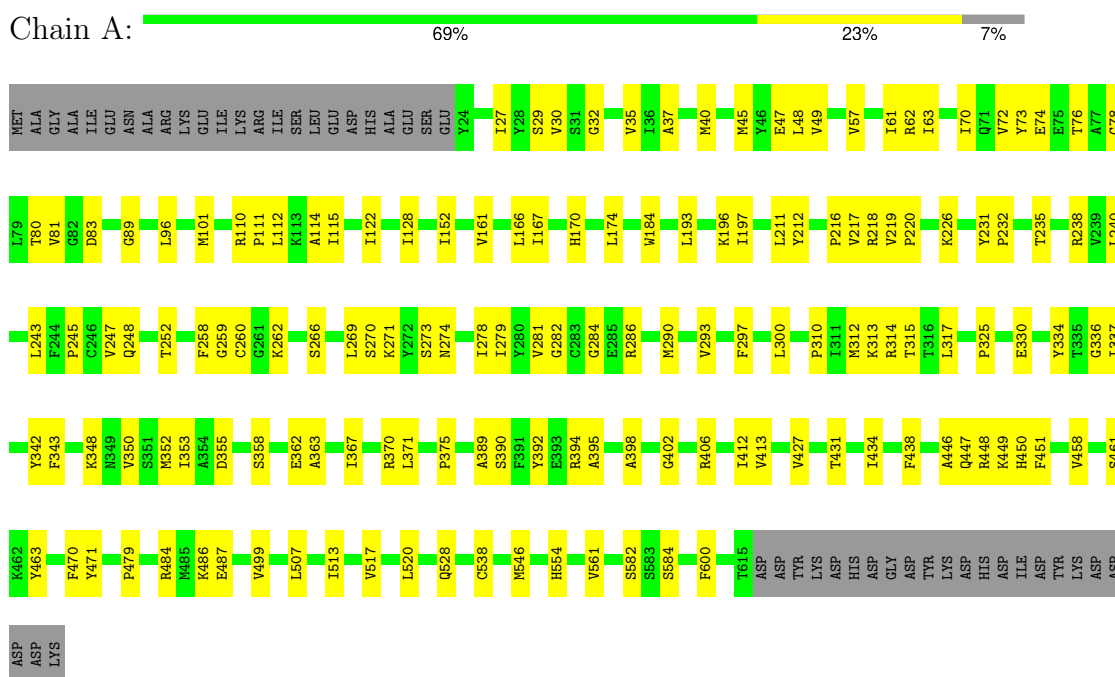


Mol	Chain	Residues	Atoms					AltConf
10	E	1	Total	C	N	O	P	0
			27	10	5	10	2	

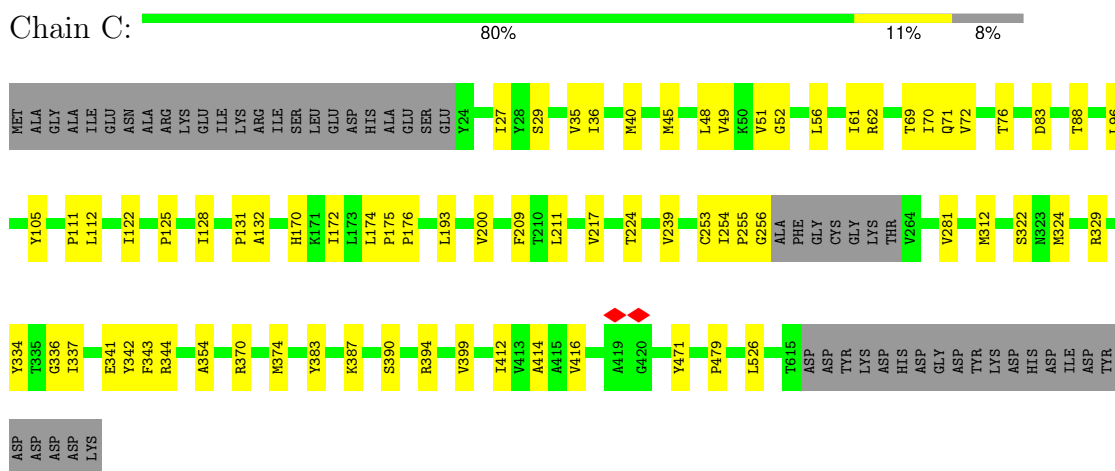
3 Residue-property plots

These plots are drawn for all protein, RNA, DNA and oligosaccharide chains in the entry. The first graphic for a chain summarises the proportions of the various outlier classes displayed in the second graphic. The second graphic shows the sequence view annotated by issues in geometry and atom inclusion in map density. Residues are color-coded according to the number of geometric quality criteria for which they contain at least one outlier: green = 0, yellow = 1, orange = 2 and red = 3 or more. A red diamond above a residue indicates a poor fit to the EM map for this residue (all-atom inclusion < 40%). Stretches of 2 or more consecutive residues without any outlier are shown as a green connector. Residues present in the sample, but not in the model, are shown in grey.

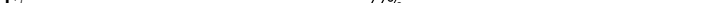
- Molecule 1: H(+)-transporting two-sector ATPase

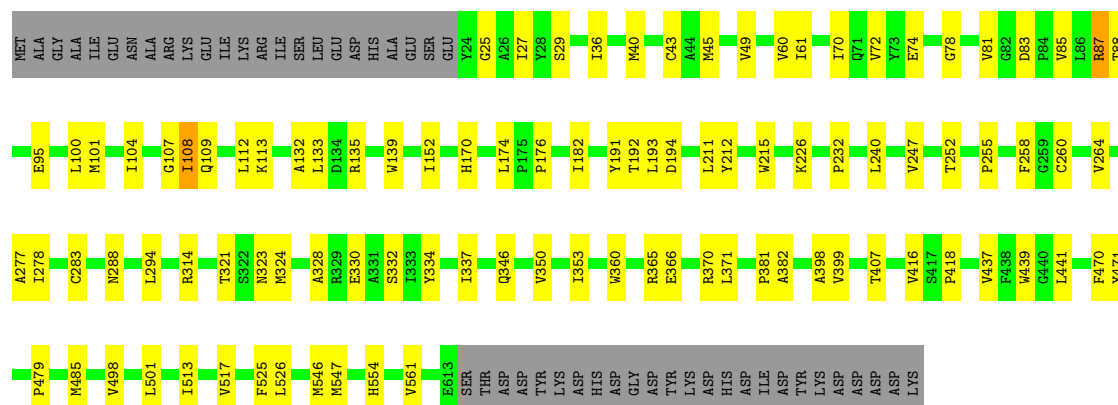


- Molecule 1: H(+)-transporting two-sector ATPase



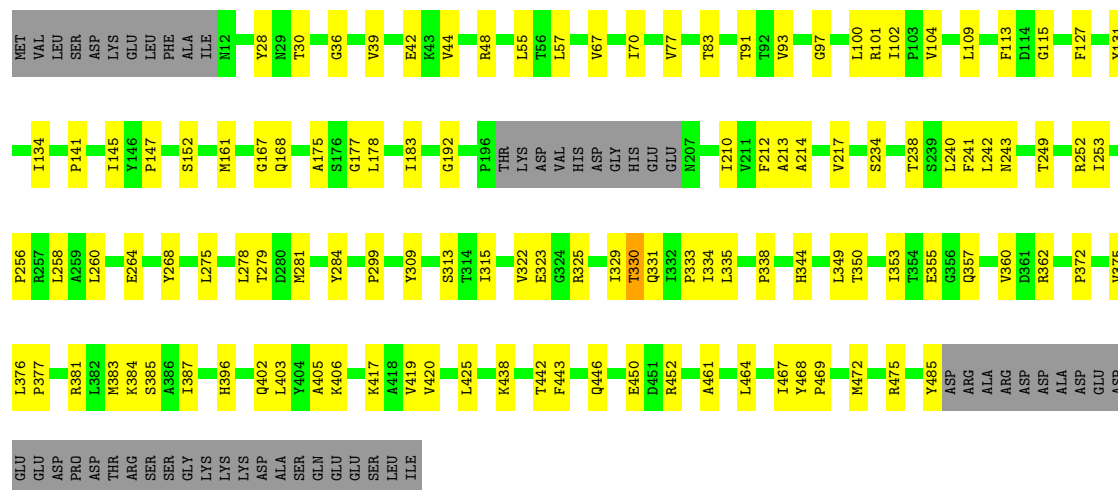
- Molecule 1: H(+)-transporting two-sector ATPase

Chain E:  77% 15% 8%



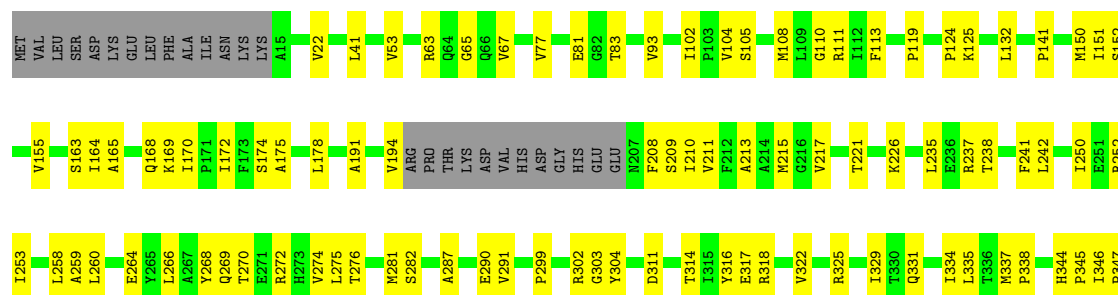
- Molecule 2: Vacuolar proton pump subunit B

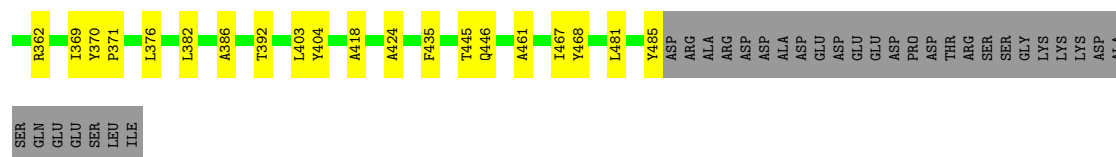
Chain B:  67% 22% 10%



- Molecule 2: Vacuolar proton pump subunit B

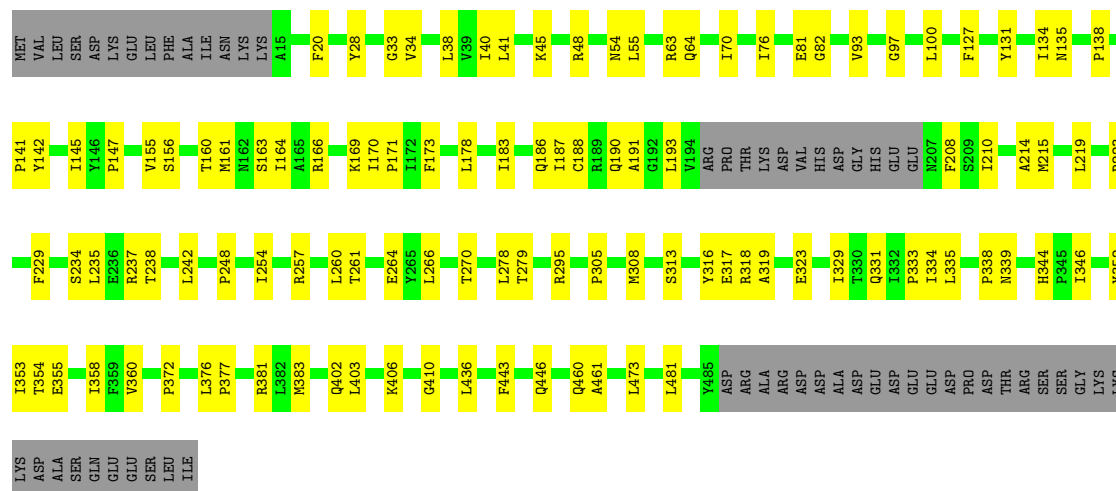
Chain D: 67% 22% 11%





• Molecule 2: Vacuolar proton pump subunit B

Chain F: 68% 21% 11%



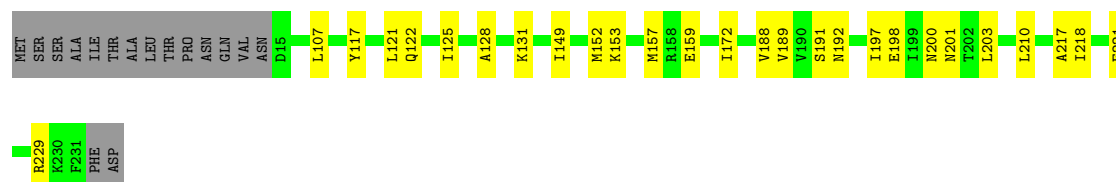
• Molecule 3: V-type proton ATPase subunit E

Chain G: 74% 12% 14%



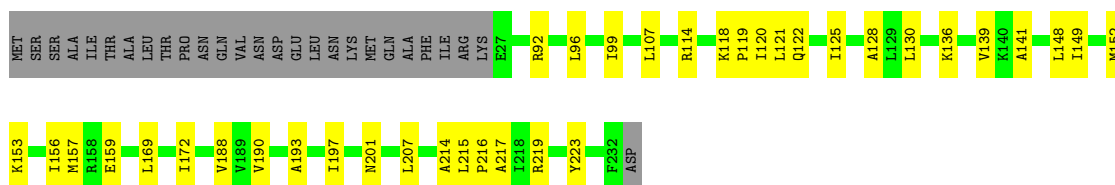
• Molecule 3: V-type proton ATPase subunit E

Chain I: 82% 12% 7%

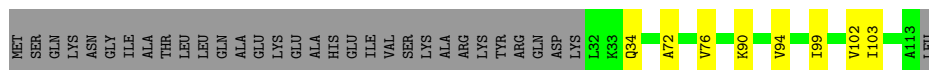


• Molecule 3: V-type proton ATPase subunit E

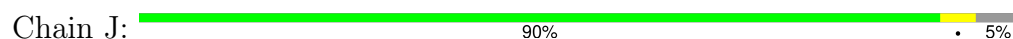
Chain K: 73% 16% 12%



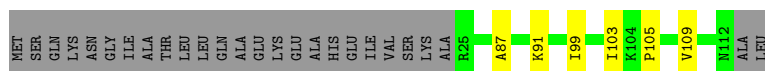
• Molecule 4: V-type proton ATPase subunit G



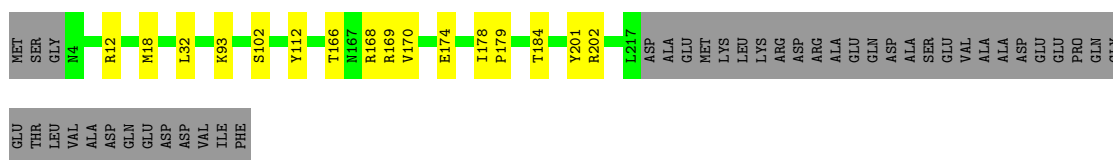
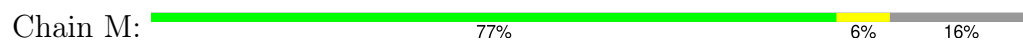
• Molecule 4: V-type proton ATPase subunit G



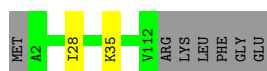
• Molecule 4: V-type proton ATPase subunit G



• Molecule 5: V-type proton ATPase subunit D

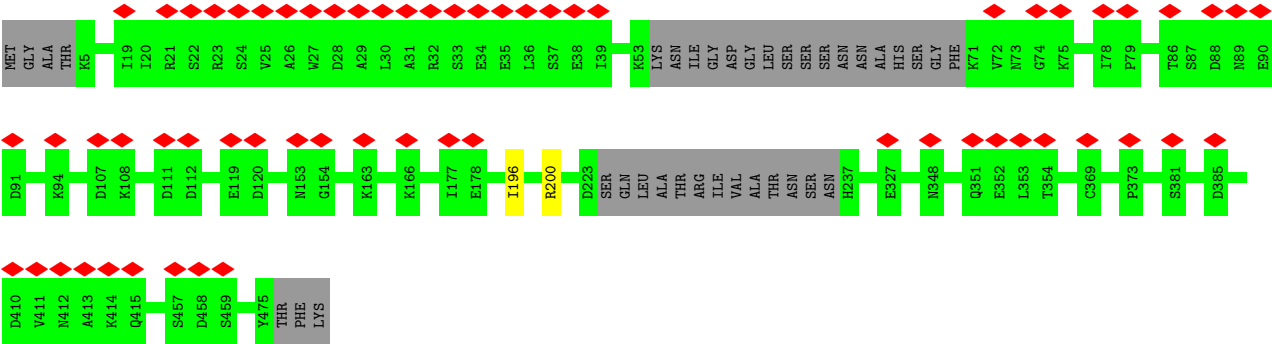


• Molecule 6: V-type proton ATPase subunit F



• Molecule 7: V-type proton ATPase subunit H





4 Experimental information

Property	Value	Source
EM reconstruction method	SINGLE PARTICLE	Depositor
Imposed symmetry	POINT, Not provided	
Number of particles used	64329	Depositor
Resolution determination method	FSC 0.143 CUT-OFF	Depositor
CTF correction method	PHASE FLIPPING AND AMPLITUDE CORRECTION	Depositor
Microscope	TFS KRIOS	Depositor
Voltage (kV)	300	Depositor
Electron dose ($e^-/\text{\AA}^2$)	51	Depositor
Minimum defocus (nm)	500	Depositor
Maximum defocus (nm)	2000	Depositor
Magnification	Not provided	
Image detector	FEI FALCON IV (4k x 4k)	Depositor
Maximum map value	7.040	Depositor
Minimum map value	-4.280	Depositor
Average map value	0.005	Depositor
Map value standard deviation	0.126	Depositor
Recommended contour level	0.2	Depositor
Map size (Å)	412.0, 412.0, 412.0	wwPDB
Map dimensions	400, 400, 400	wwPDB
Map angles (°)	90.0, 90.0, 90.0	wwPDB
Pixel spacing (Å)	1.03, 1.03, 1.03	Depositor

5 Model quality

5.1 Standard geometry

Bond lengths and bond angles in the following residue types are not validated in this section: ADP, MG, ATP

The Z score for a bond length (or angle) is the number of standard deviations the observed value is removed from the expected value. A bond length (or angle) with $|Z| > 5$ is considered an outlier worth inspection. RMSZ is the root-mean-square of all Z scores of the bond lengths (or angles).

Mol	Chain	Bond lengths		Bond angles	
		RMSZ	# $ Z > 5$	RMSZ	# $ Z > 5$
1	A	0.14	0/4383	0.30	0/5975
1	C	0.12	0/3760	0.28	0/5185
1	E	0.15	0/4210	0.31	0/5768
2	B	0.16	0/3459	0.34	0/4717
2	D	0.15	0/3374	0.33	0/4610
2	F	0.15	0/3385	0.30	0/4622
3	G	0.10	0/1283	0.23	0/1762
3	I	0.11	0/1334	0.28	0/1834
3	K	0.11	0/1319	0.24	0/1806
4	H	0.09	0/457	0.24	0/631
4	J	0.08	0/571	0.23	0/793
4	L	0.12	0/487	0.28	0/672
5	M	0.11	0/1243	0.22	0/1712
6	N	0.07	0/550	0.21	0/766
7	P	0.06	0/2190	0.19	0/3054
All	All	0.13	0/32005	0.29	0/43907

There are no bond length outliers.

There are no bond angle outliers.

There are no chirality outliers.

There are no planarity outliers.

5.2 Too-close contacts

In the following table, the Non-H and H(model) columns list the number of non-hydrogen atoms and hydrogen atoms in the chain respectively. The H(added) column lists the number of hydrogen atoms added and optimized by MolProbity. The Clashes column lists the number of clashes within the asymmetric unit, whereas Symm-Clashes lists symmetry-related clashes.

Mol	Chain	Non-H	H(model)	H(added)	Clashes	Symm-Clashes
1	A	4285	0	4082	99	0
1	C	3690	0	2993	49	0
1	E	4113	0	3792	65	0
2	B	3390	0	3271	87	0
2	D	3306	0	3151	80	0
2	F	3317	0	3175	73	0
3	G	1273	0	1104	20	0
3	I	1326	0	1076	21	0
3	K	1308	0	1125	32	0
4	H	456	0	327	6	0
4	J	570	0	359	3	0
4	L	486	0	341	7	0
5	M	1235	0	843	13	0
6	N	551	0	247	1	0
7	P	2193	0	939	1	0
8	A	31	0	12	2	0
9	A	1	0	0	0	0
9	E	1	0	0	0	0
10	E	27	0	12	1	0
All	All	31559	0	26849	508	0

The all-atom clashscore is defined as the number of clashes found per 1000 atoms (including hydrogen atoms). The all-atom clashscore for this structure is 9.

All (508) close contacts within the same asymmetric unit are listed below, sorted by their clash magnitude.

Atom-1	Atom-2	Interatomic distance (Å)	Clash overlap (Å)
3:K:120:ILE:HD11	4:L:103:ILE:HG23	1.50	0.94
2:D:175:ALA:H	2:D:178:LEU:HD12	1.49	0.78
1:E:100:LEU:HD23	1:E:133:LEU:HD21	1.68	0.76
2:D:290:GLU:HA	1:E:382:ALA:HB1	1.66	0.75
3:G:206:ARG:NH1	4:H:102:VAL:O	2.20	0.75
2:D:266:LEU:O	2:D:270:THR:HB	1.87	0.74
2:D:226:LYS:HZ2	2:D:242:LEU:HD12	1.51	0.74
2:B:417:LYS:HB2	2:B:425:LEU:HD11	1.71	0.73
2:F:155:VAL:HA	2:F:446:GLN:HE22	1.55	0.72
3:I:125:ILE:HD13	3:I:188:VAL:HG21	1.73	0.71
1:A:517:VAL:HG11	1:A:554:HIS:HB2	1.72	0.70
1:A:238:ARG:NH1	1:A:538:CYS:SG	2.65	0.70
1:A:286:ARG:NH2	8:A:701:ATP:O3G	2.25	0.69
3:K:114:ARG:HH21	3:K:148:LEU:HD12	1.58	0.68
2:B:175:ALA:HB3	2:B:178:LEU:HD23	1.73	0.68

Continued on next page...

Continued from previous page...

Atom-1	Atom-2	Interatomic distance (Å)	Clash overlap (Å)
1:E:232:PRO:HA	1:E:247:VAL:HA	1.76	0.68
2:F:163:SER:H	2:F:383:MET:HG3	1.59	0.68
1:A:269:LEU:O	1:A:273:SER:HB3	1.94	0.67
2:F:187:ILE:O	2:F:191:ALA:HB2	1.94	0.67
1:C:174:LEU:HD12	1:C:175:PRO:HD2	1.78	0.66
3:K:121:LEU:HD11	3:K:188:VAL:HG13	1.77	0.65
3:I:128:ALA:HB2	3:I:201:ASN:HD22	1.61	0.65
2:B:210:ILE:HB	2:B:238:THR:HG22	1.76	0.65
2:F:235:LEU:HA	2:F:238:THR:HG22	1.79	0.64
1:A:27:ILE:HD12	1:A:83:ASP:HB2	1.80	0.64
1:A:375:PRO:HD2	5:M:202:ARG:HG2	1.79	0.64
1:E:104:ILE:HD11	1:E:294:LEU:HD21	1.80	0.63
2:B:55:LEU:HG	2:B:93:VAL:HG22	1.81	0.63
2:B:240:LEU:HD23	2:B:242:LEU:HD21	1.79	0.63
2:D:67:VAL:HG12	2:D:77:VAL:HG22	1.81	0.62
2:F:171:PRO:HB3	2:F:333:PRO:HG2	1.81	0.62
1:A:48:LEU:HD11	1:A:57:VAL:HG13	1.81	0.62
2:B:403:LEU:HD11	2:B:461:ALA:HB1	1.81	0.62
2:F:40:ILE:HG12	2:F:76:ILE:HG12	1.82	0.62
2:D:260:LEU:HB3	2:D:318:ARG:HG2	1.79	0.62
1:E:108:ILE:HG22	1:E:109:GLN:H	1.64	0.62
2:B:102:ILE:HD12	2:B:258:LEU:HD22	1.80	0.62
2:F:169:LYS:HE2	2:F:317:GLU:HA	1.81	0.62
1:A:402:GLY:O	1:A:406:ARG:NH1	2.33	0.62
3:G:124:LEU:O	3:G:201:ASN:ND2	2.32	0.61
1:A:217:VAL:HB	1:A:334:TYR:HB3	1.82	0.61
6:N:28:ILE:HA	6:N:35:LYS:HA	1.83	0.61
1:E:513:ILE:HD11	1:E:561:VAL:HG21	1.81	0.61
1:A:584:SER:HB2	1:A:600:PHE:HE1	1.65	0.61
2:B:419:VAL:HG12	2:B:420:VAL:HG13	1.83	0.61
2:F:403:LEU:HD11	2:F:461:ALA:HB1	1.81	0.61
2:D:172:ILE:HB	2:D:334:ILE:HG12	1.81	0.61
5:M:166:THR:O	5:M:170:VAL:HG23	2.00	0.61
2:F:319:ALA:HB2	2:F:331:GLN:HG3	1.83	0.61
1:A:438:PHE:HE2	1:A:458:VAL:HG22	1.66	0.60
1:A:40:MET:HE1	1:A:70:ILE:HD11	1.83	0.60
1:A:281:VAL:HG21	1:A:352:MET:HE3	1.83	0.60
2:B:115:GLY:HA3	2:B:243:ASN:HD22	1.67	0.60
1:E:330:GLU:HG2	1:E:360:TRP:HE1	1.66	0.60
3:K:152:MET:HE2	3:K:156:ILE:HD11	1.83	0.60
2:B:39:VAL:HG11	2:B:55:LEU:HD21	1.83	0.60

Continued on next page...

Continued from previous page...

Atom-1	Atom-2	Interatomic distance (Å)	Clash overlap (Å)
3:K:122:GLN:NE2	3:K:159:GLU:OE1	2.34	0.60
2:F:208:PHE:O	2:F:237:ARG:NH1	2.35	0.59
3:K:125:ILE:HG12	3:K:188:VAL:HG21	1.84	0.59
1:E:277:ALA:HB3	1:E:350:VAL:HG22	1.84	0.59
2:F:402:GLN:OE1	2:F:406:LYS:NZ	2.25	0.58
3:G:138:ILE:HG22	3:G:173:VAL:HB	1.84	0.58
2:B:48:ARG:NH1	2:B:97:GLY:O	2.37	0.58
2:B:67:VAL:HG12	2:B:77:VAL:HG22	1.86	0.58
1:C:281:VAL:HG11	1:C:336:GLY:HA3	1.85	0.58
2:D:22:VAL:HG22	3:I:210:LEU:HB2	1.86	0.58
2:D:102:ILE:HG21	2:D:258:LEU:HD22	1.86	0.58
2:F:214:ALA:HB3	2:F:242:LEU:HA	1.85	0.58
2:F:279:THR:HA	2:F:334:ILE:HB	1.86	0.58
1:A:122:ILE:HD12	2:B:322:VAL:HG11	1.85	0.57
3:I:153:LYS:O	3:I:157:MET:HG3	2.04	0.57
2:D:191:ALA:O	2:D:237:ARG:NH2	2.37	0.57
3:K:139:VAL:HG22	3:K:190:VAL:HG12	1.85	0.57
2:B:443:PHE:O	2:B:452:ARG:NH2	2.37	0.57
2:D:369:ILE:HG13	2:D:370:TYR:H	1.69	0.57
2:F:166:ARG:HD2	2:F:193:LEU:HD21	1.85	0.57
2:F:360:VAL:HG13	2:F:372:PRO:HG2	1.87	0.57
2:D:253:ILE:HG13	2:D:291:VAL:HG21	1.85	0.57
1:E:81:VAL:HG23	2:F:70:ILE:HD12	1.86	0.57
2:B:402:GLN:NE2	2:B:475:ARG:H	2.03	0.57
1:C:224:THR:HB	1:C:399:VAL:HG23	1.87	0.57
1:E:252:THR:HG22	1:E:437:VAL:HB	1.87	0.57
2:F:48:ARG:NH1	2:F:97:GLY:O	2.37	0.56
1:C:125:PRO:HG2	1:C:128:ILE:HB	1.86	0.56
1:C:255:PRO:HA	1:C:416:VAL:HG12	1.85	0.56
2:F:55:LEU:HG	2:F:93:VAL:HG22	1.85	0.56
2:B:360:VAL:HG13	2:B:372:PRO:HG2	1.88	0.56
2:B:383:MET:O	2:B:387:ILE:HB	2.05	0.56
2:D:281:MET:HB2	2:D:335:LEU:HG	1.86	0.56
1:E:49:VAL:HG21	1:E:70:ILE:HD13	1.88	0.56
1:A:78:GLY:HA2	2:B:48:ARG:NE	2.21	0.56
1:E:61:ILE:HD12	1:E:371:LEU:HD11	1.88	0.56
7:P:196:ILE:O	7:P:200:ARG:N	2.37	0.56
1:A:284:GLY:O	2:B:309:TYR:OH	2.24	0.56
2:F:100:LEU:HD23	2:F:254:ILE:HD11	1.88	0.55
4:L:103:ILE:O	4:L:105:PRO:HD3	2.06	0.55
1:A:81:VAL:HG23	2:B:70:ILE:HD12	1.89	0.55

Continued on next page...

Continued from previous page...

Atom-1	Atom-2	Interatomic distance (Å)	Clash overlap (Å)
2:D:226:LYS:NZ	2:D:242:LEU:HD12	2.20	0.55
2:D:346:ILE:HB	2:D:347:PRO:HD3	1.88	0.55
2:B:469:PRO:HG2	2:B:472:MET:HG3	1.87	0.55
1:C:193:LEU:HD12	1:C:211:LEU:HB2	1.89	0.55
1:E:501:LEU:O	5:M:169:ARG:NH2	2.36	0.55
1:A:389:ALA:HA	1:A:434:ILE:HG12	1.88	0.55
1:E:525:PHE:HD1	1:E:546:MET:HE2	1.71	0.55
2:F:335:LEU:HD11	2:F:346:ILE:HG22	1.88	0.55
2:D:151:ILE:HG21	2:D:275:LEU:HD22	1.89	0.55
1:E:525:PHE:HD2	1:E:526:LEU:HD12	1.72	0.54
4:J:103:ILE:O	4:J:105:PRO:HD3	2.07	0.54
3:K:153:LYS:HG2	3:K:157:MET:HE3	1.90	0.54
2:B:384:LYS:HG3	2:B:385:SER:H	1.71	0.54
2:F:127:PHE:HD2	3:K:219:ARG:HD2	1.72	0.54
3:K:141:ALA:HB2	3:K:188:VAL:HG12	1.89	0.54
1:A:32:GLY:HA3	1:A:370:ARG:HH11	1.71	0.54
2:B:214:ALA:HB3	2:B:242:LEU:HA	1.90	0.54
2:D:211:VAL:HB	2:D:276:THR:HG22	1.89	0.54
3:K:99:ILE:HD13	4:L:91:LYS:HG2	1.89	0.54
2:D:264:GLU:HA	2:D:329:ILE:HD11	1.90	0.54
1:A:312:MET:HE1	1:A:317:LEU:HD13	1.90	0.54
2:D:215:MET:HB3	2:D:252:ARG:HG3	1.90	0.54
1:E:226:LYS:HG2	1:E:398:ALA:HB2	1.89	0.54
3:I:189:VAL:HG12	3:I:200:ASN:HA	1.89	0.54
1:E:255:PRO:HA	1:E:416:VAL:O	2.08	0.53
1:A:226:LYS:HG2	1:A:398:ALA:HB2	1.90	0.53
3:G:148:LEU:O	3:G:152:MET:HG2	2.09	0.53
1:A:520:LEU:HD11	1:A:582:SER:HB2	1.89	0.53
1:E:517:VAL:HG11	1:E:554:HIS:HB2	1.90	0.53
2:F:376:LEU:HB2	2:F:377:PRO:HD3	1.89	0.53
2:D:150:MET:HE2	2:D:163:SER:OG	2.08	0.53
2:B:279:THR:HA	2:B:334:ILE:HB	1.91	0.53
1:A:220:PRO:HB3	1:A:394:ARG:HD2	1.91	0.53
2:B:420:VAL:HG12	5:M:168:ARG:HG3	1.89	0.53
2:B:357:GLN:NE2	2:B:377:PRO:O	2.42	0.53
5:M:32:LEU:HB3	5:M:170:VAL:HG22	1.91	0.53
1:E:107:GLY:HA2	1:E:332:SER:HB3	1.91	0.52
2:F:178:LEU:HD13	2:F:360:VAL:HG12	1.91	0.52
1:A:30:VAL:HG13	1:A:35:VAL:HG22	1.90	0.52
1:E:278:ILE:HD11	1:E:353:ILE:HD12	1.91	0.52
1:A:238:ARG:HD3	1:A:546:MET:CE	2.40	0.52

Continued on next page...

Continued from previous page...

Atom-1	Atom-2	Interatomic distance (Å)	Clash overlap (Å)
2:F:266:LEU:O	2:F:270:THR:HB	2.09	0.52
3:K:149:ILE:HA	3:K:152:MET:HG2	1.92	0.52
2:D:468:TYR:O	2:D:485:TYR:OH	2.21	0.52
1:E:139:TRP:N	1:E:191:TYR:O	2.37	0.52
5:M:93:LYS:O	5:M:112:TYR:N	2.42	0.52
1:A:513:ILE:HD11	1:A:561:VAL:HG21	1.91	0.52
2:D:53:VAL:O	2:D:65:GLY:N	2.42	0.52
3:G:121:LEU:HD11	3:G:188:VAL:HG13	1.92	0.52
1:A:447:GLN:O	1:A:448:ARG:HG2	2.10	0.51
1:C:61:ILE:HG21	1:C:71:GLN:HG3	1.91	0.51
1:C:337:ILE:O	1:C:341:GLU:HG3	2.10	0.51
1:E:334:TYR:HA	1:E:337:ILE:HG22	1.92	0.51
2:B:168:GLN:NE2	2:B:355:GLU:O	2.44	0.51
2:D:63:ARG:HD3	2:D:81:GLU:HB2	1.91	0.51
2:F:145:ILE:HD11	2:F:323:GLU:HA	1.92	0.51
1:C:200:VAL:HB	1:C:209:PHE:HE2	1.75	0.51
2:F:183:ILE:HD11	2:F:372:PRO:HD2	1.93	0.51
1:A:290:MET:SD	1:A:317:LEU:HD23	2.51	0.51
4:H:99:ILE:O	4:H:103:ILE:HG12	2.11	0.51
2:D:110:GLY:HA2	2:D:235:LEU:O	2.10	0.51
2:D:191:ALA:HB3	2:D:210:ILE:HD11	1.92	0.51
1:A:96:LEU:HD13	1:A:342:TYR:HB2	1.93	0.51
1:A:218:ARG:NH1	1:A:330:GLU:OE2	2.44	0.51
2:B:438:LYS:O	2:B:442:THR:OG1	2.21	0.51
2:B:438:LYS:HD3	2:B:467:ILE:HD11	1.93	0.51
2:F:410:GLY:C	2:F:436:LEU:HD12	2.36	0.51
1:C:29:SER:HB3	1:C:36:ILE:HB	1.94	0.50
2:D:208:PHE:HD2	2:D:237:ARG:HH21	1.58	0.50
2:D:210:ILE:O	2:D:238:THR:HA	2.11	0.50
2:D:403:LEU:HD11	2:D:461:ALA:HB1	1.94	0.50
1:E:78:GLY:HA2	2:F:48:ARG:HE	1.77	0.50
2:F:34:VAL:HG12	2:F:34:VAL:O	2.12	0.50
5:M:174:GLU:HA	5:M:178:ILE:HD12	1.93	0.50
1:A:184:TRP:HZ3	1:A:196:LYS:HE2	1.76	0.50
2:B:145:ILE:HD11	2:B:323:GLU:HA	1.94	0.50
1:E:112:LEU:HD13	2:F:141:PRO:HD2	1.94	0.50
2:B:161:MET:SD	2:B:375:VAL:HG11	2.52	0.50
3:G:129:LEU:HD12	3:G:190:VAL:HG11	1.93	0.50
3:I:217:ALA:O	3:I:221:GLU:HG2	2.11	0.50
2:F:63:ARG:NH1	2:F:82:GLY:O	2.44	0.50
2:B:331:GLN:C	2:B:333:PRO:HD3	2.37	0.50

Continued on next page...

Continued from previous page...

Atom-1	Atom-2	Interatomic distance (Å)	Clash overlap (Å)
2:B:406:LYS:HD2	2:B:468:TYR:CZ	2.46	0.50
2:D:113:PHE:HB2	2:D:241:PHE:CD1	2.47	0.50
2:D:268:TYR:HB3	2:D:325:ARG:HH11	1.77	0.50
2:D:304:TYR:HE2	2:D:344:HIS:CE1	2.30	0.50
1:C:254:ILE:HG22	1:C:256:GLY:H	1.77	0.49
5:M:18:MET:HE2	5:M:184:THR:HG21	1.94	0.49
1:A:166:LEU:HD22	1:A:314:ARG:HB3	1.93	0.49
2:B:100:LEU:HD23	2:B:134:ILE:HD13	1.94	0.49
2:B:183:ILE:HD11	2:B:372:PRO:HD2	1.93	0.49
1:C:51:VAL:N	1:C:56:LEU:O	2.44	0.49
2:F:305:PRO:HG2	2:F:308:MET:HB2	1.94	0.49
2:B:443:PHE:HB2	2:B:464:LEU:HD11	1.95	0.49
2:D:41:LEU:HD11	2:D:93:VAL:HG11	1.94	0.49
2:D:435:PHE:HB2	2:D:467:ILE:HD11	1.93	0.49
1:E:152:ILE:HD12	1:E:182:ILE:HD11	1.94	0.49
1:E:321:THR:HG22	1:E:324:MET:HE3	1.94	0.49
3:K:169:LEU:HD11	3:K:172:ILE:HB	1.95	0.49
1:A:29:SER:HA	2:B:70:ILE:O	2.12	0.49
1:E:40:MET:HE1	1:E:49:VAL:HG11	1.92	0.49
1:E:100:LEU:O	1:E:100:LEU:HD12	2.13	0.49
1:E:107:GLY:HA3	1:E:328:ALA:HB1	1.94	0.49
2:F:313:SER:HA	2:F:353:ILE:HG21	1.95	0.49
2:B:212:PHE:HB3	2:B:240:LEU:HG	1.95	0.49
1:A:297:PHE:HD2	1:A:315:THR:HG21	1.77	0.49
2:D:260:LEU:HD11	2:D:331:GLN:NE2	2.27	0.49
3:G:160:TYR:CD2	3:G:169:LEU:HB2	2.48	0.49
1:C:337:ILE:HD13	1:C:412:ILE:HD11	1.94	0.49
2:D:418:ALA:HB3	1:E:498:VAL:HG11	1.95	0.49
1:A:63:ILE:O	2:F:33:GLY:HA2	2.12	0.48
2:B:113:PHE:HB2	2:B:241:PHE:CD1	2.47	0.48
1:E:40:MET:HE2	1:E:43:CYS:SG	2.53	0.48
3:G:122:GLN:HB2	3:G:152:MET:HE1	1.95	0.48
3:I:128:ALA:HB2	3:I:201:ASN:ND2	2.26	0.48
1:E:366:GLU:O	1:E:370:ARG:HG3	2.12	0.48
2:D:169:LYS:HD2	2:D:316:TYR:HB3	1.95	0.48
1:A:111:PRO:HG2	1:A:114:ALA:HB3	1.95	0.48
1:A:282:GLY:HA2	1:A:355:ASP:HB2	1.94	0.48
1:A:449:LYS:HD3	1:A:451:PHE:HE2	1.79	0.48
1:C:217:VAL:HG12	1:C:334:TYR:HB3	1.95	0.48
1:C:471:TYR:HD2	1:C:479:PRO:HG3	1.78	0.48
1:E:193:LEU:HD22	1:E:212:TYR:HB3	1.96	0.48

Continued on next page...

Continued from previous page...

Atom-1	Atom-2	Interatomic distance (Å)	Clash overlap (Å)
2:B:281:MET:HE1	2:B:315:ILE:HG21	1.96	0.48
1:A:112:LEU:HD13	2:B:141:PRO:HD2	1.95	0.48
2:F:54:ASN:OD1	2:F:64:GLN:NE2	2.46	0.48
1:A:231:TYR:CD1	1:A:232:PRO:HD2	2.49	0.47
1:A:238:ARG:HD3	1:A:546:MET:HE1	1.95	0.47
1:E:27:ILE:HD13	1:E:83:ASP:HB2	1.95	0.47
1:E:108:ILE:HG22	1:E:109:GLN:N	2.28	0.47
1:E:152:ILE:HG12	1:E:174:LEU:HD22	1.95	0.47
3:I:191:SER:HA	3:I:198:GLU:HA	1.96	0.47
3:K:121:LEU:HD23	3:K:148:LEU:HD22	1.96	0.47
2:B:147:PRO:HB3	2:B:167:GLY:H	1.79	0.47
2:D:105:SER:O	2:D:108:MET:HG2	2.15	0.47
2:D:270:THR:HG21	2:D:272:ARG:HH11	1.79	0.47
2:D:344:HIS:HB3	2:D:347:PRO:HD2	1.95	0.47
1:A:471:TYR:HB3	1:A:479:PRO:HD3	1.95	0.47
1:A:74:GLU:HA	1:A:325:PRO:HG3	1.97	0.47
1:A:216:PRO:HB2	1:A:219:VAL:HG22	1.97	0.47
2:D:104:VAL:HG11	2:D:132:LEU:HD12	1.96	0.47
2:F:20:PHE:CE1	3:K:217:ALA:HB3	2.49	0.47
1:A:232:PRO:HA	1:A:247:VAL:HA	1.97	0.47
1:A:245:PRO:O	1:A:461:SER:OG	2.30	0.47
2:B:210:ILE:O	2:B:238:THR:HA	2.15	0.47
2:B:335:LEU:HD11	2:B:350:THR:HG21	1.96	0.47
2:D:164:ILE:HA	2:D:168:GLN:HE21	1.80	0.47
1:E:170:HIS:CE1	1:E:346:GLN:HE22	2.32	0.47
1:E:399:VAL:HG12	1:E:407:THR:HG22	1.95	0.47
2:F:134:ILE:HG13	2:F:135:ASN:N	2.29	0.47
2:F:316:TYR:O	2:F:331:GLN:NE2	2.47	0.47
3:I:149:ILE:O	3:I:153:LYS:HG3	2.15	0.47
3:K:118:LYS:HE2	3:K:148:LEU:HG	1.97	0.47
3:K:130:LEU:HD22	4:L:109:VAL:HG22	1.96	0.47
1:A:193:LEU:HB3	1:A:212:TYR:CD1	2.50	0.47
1:A:297:PHE:CD2	1:A:315:THR:HG21	2.49	0.47
1:E:29:SER:HB3	1:E:36:ILE:HB	1.97	0.47
2:F:164:ILE:HG12	2:F:170:ILE:HD13	1.95	0.47
1:A:61:ILE:HG22	1:A:62:ARG:HG3	1.97	0.47
1:A:390:SER:O	1:A:394:ARG:HG2	2.15	0.47
2:B:376:LEU:HB2	2:B:377:PRO:HD3	1.95	0.47
1:C:62:ARG:HG2	1:C:69:THR:HB	1.97	0.47
1:C:383:TYR:O	1:C:387:LYS:HG3	2.15	0.47
2:F:188:CYS:SG	2:F:210:ILE:HG12	2.56	0.47

Continued on next page...

Continued from previous page...

Atom-1	Atom-2	Interatomic distance (Å)	Clash overlap (Å)
2:F:155:VAL:HA	2:F:446:GLN:NE2	2.28	0.46
3:G:107:LEU:HD22	3:G:203:LEU:HD13	1.97	0.46
3:I:192:ASN:N	3:I:197:ILE:O	2.48	0.46
1:A:152:ILE:HG12	1:A:174:LEU:HD22	1.98	0.46
2:F:260:LEU:HB3	2:F:318:ARG:HE	1.80	0.46
1:C:72:VAL:HG21	1:C:76:THR:HB	1.97	0.46
2:D:178:LEU:HD21	2:D:362:ARG:HA	1.97	0.46
2:F:169:LYS:O	2:F:354:THR:HB	2.15	0.46
1:A:80:THR:HG22	2:B:48:ARG:HG2	1.98	0.46
3:K:114:ARG:HD2	3:K:114:ARG:HA	1.68	0.46
2:B:213:ALA:HB3	2:B:278:LEU:HD23	1.97	0.46
2:F:338:PRO:HG3	2:F:344:HIS:CE1	2.51	0.46
1:A:78:GLY:HA2	2:B:48:ARG:HE	1.78	0.46
2:F:147:PRO:HB3	2:F:166:ARG:O	2.16	0.46
3:I:117:TYR:CZ	3:I:121:LEU:HD21	2.51	0.46
1:A:232:PRO:HG3	1:A:470:PHE:CE2	2.50	0.46
1:C:111:PRO:HG3	1:C:131:PRO:O	2.16	0.46
3:K:128:ALA:HB2	3:K:201:ASN:HD22	1.80	0.46
2:D:302:ARG:HH11	2:D:345:PRO:HD3	1.80	0.46
3:G:44:GLU:HA	4:H:34:GLN:HA	1.97	0.46
2:F:264:GLU:HA	2:F:329:ILE:HD11	1.98	0.46
3:K:96:LEU:HD21	3:K:215:LEU:HD11	1.97	0.46
1:E:192:THR:HG23	1:E:194:ASP:H	1.81	0.45
1:A:161:VAL:O	1:A:170:HIS:N	2.45	0.45
1:A:293:VAL:HG11	1:A:317:LEU:HD21	1.98	0.45
1:A:358:SER:HA	1:A:427:VAL:HG11	1.98	0.45
1:E:133:LEU:HB3	1:E:193:LEU:HD13	1.98	0.45
1:E:418:PRO:O	2:F:352:TYR:OH	2.30	0.45
2:F:28:TYR:HD1	3:K:197:ILE:HG12	1.81	0.45
2:F:156:SER:H	2:F:446:GLN:NE2	2.13	0.45
5:M:174:GLU:O	5:M:179:PRO:HD2	2.16	0.45
1:C:49:VAL:HG23	1:C:51:VAL:HG23	1.99	0.45
2:D:102:ILE:CG2	2:D:258:LEU:HD22	2.45	0.45
2:D:217:VAL:HG22	2:D:221:THR:HB	1.99	0.45
2:D:371:PRO:HD3	2:D:446:GLN:HB3	1.98	0.45
3:I:218:ILE:HD11	4:J:98:LEU:HD21	1.99	0.45
1:A:395:ALA:HB2	1:A:412:ILE:HG13	1.99	0.45
2:D:113:PHE:HB2	2:D:241:PHE:HD1	1.81	0.45
1:E:104:ILE:HG13	1:E:294:LEU:HD11	1.98	0.45
3:G:191:SER:HA	3:G:198:GLU:HA	1.98	0.45
4:J:24:ALA:O	4:J:28:ARG:N	2.44	0.45

Continued on next page...

Continued from previous page...

Atom-1	Atom-2	Interatomic distance (Å)	Clash overlap (Å)
2:B:299:PRO:HD3	5:M:201:TYR:CD2	2.50	0.45
1:E:485:MET:SD	1:E:547:MET:HG2	2.57	0.45
3:I:125:ILE:HD11	3:I:188:VAL:HG11	1.99	0.45
1:A:57:VAL:HG12	1:A:73:TYR:HD2	1.81	0.45
2:D:424:ALA:HB2	5:M:102:SER:HA	1.99	0.45
1:E:260:CYS:O	1:E:441:LEU:HD13	2.17	0.45
2:F:131:TYR:HE1	3:K:216:PRO:HD3	1.82	0.45
2:F:229:PHE:HB3	2:F:234:SER:HB2	1.99	0.45
3:I:122:GLN:NE2	3:I:159:GLU:OE1	2.29	0.45
1:A:252:THR:HB	1:A:413:VAL:HA	1.99	0.45
2:F:127:PHE:CE1	3:K:96:LEU:HD22	2.52	0.45
1:A:243:LEU:HD12	1:A:486:LYS:HG3	1.99	0.45
1:A:248:GLN:NE2	1:A:274:ASN:OD1	2.49	0.45
1:C:71:GLN:HE22	1:C:370:ARG:HG2	1.81	0.45
1:E:72:VAL:HG12	1:E:74:GLU:H	1.82	0.45
1:A:45:MET:HE3	1:A:45:MET:HB3	1.87	0.44
1:A:167:ILE:HG23	1:A:348:LYS:HE3	1.99	0.44
1:C:354:ALA:HB3	1:C:414:ALA:HA	2.00	0.44
2:D:299:PRO:HB2	2:D:303:GLY:HA2	2.00	0.44
1:E:60:VAL:HG22	1:E:70:ILE:HG12	1.98	0.44
1:A:584:SER:HB2	1:A:600:PHE:CE1	2.50	0.44
2:D:311:ASP:O	2:D:314:THR:OG1	2.35	0.44
2:F:186:GLN:O	2:F:190:GLN:HG2	2.16	0.44
1:A:310:PRO:HD2	1:A:313:LYS:HD2	2.00	0.44
1:A:363:ALA:O	1:A:367:ILE:HG12	2.16	0.44
1:C:122:ILE:HD12	2:D:322:VAL:HG11	1.99	0.44
1:C:324:MET:O	1:C:329:ARG:NH1	2.50	0.44
2:D:268:TYR:O	2:D:325:ARG:HG2	2.18	0.44
1:A:235:THR:HG21	1:A:240:LEU:HD12	1.99	0.44
1:C:341:GLU:OE2	1:C:344:ARG:NH1	2.49	0.44
3:I:172:ILE:HG13	3:I:172:ILE:O	2.17	0.44
2:B:28:TYR:N	2:B:93:VAL:O	2.44	0.44
2:D:213:ALA:HB2	2:D:259:ALA:HB2	1.99	0.44
1:A:334:TYR:HA	1:A:337:ILE:HG22	1.99	0.44
2:D:152:SER:HB2	2:D:194:VAL:HB	1.99	0.44
2:D:210:ILE:HA	2:D:274:VAL:O	2.17	0.44
1:E:288:ASN:ND2	2:F:355:GLU:OE2	2.27	0.44
2:B:446:GLN:NE2	2:B:450:GLU:O	2.31	0.44
2:D:282:SER:HA	2:D:346:ILE:HD13	2.00	0.44
2:F:100:LEU:HB3	2:F:134:ILE:HD13	1.99	0.44
2:F:219:LEU:HD21	2:F:223:ARG:HH21	1.83	0.44

Continued on next page...

Continued from previous page...

Atom-1	Atom-2	Interatomic distance (Å)	Clash overlap (Å)
2:B:387:ILE:HG23	2:B:396:HIS:HB3	1.99	0.43
1:E:95:GLU:HB2	1:E:132:ALA:HB3	2.00	0.43
2:F:443:PHE:HD2	2:F:460:GLN:HG2	1.82	0.43
3:I:131:LYS:HB3	3:I:131:LYS:HE3	1.86	0.43
1:C:52:GLY:HA2	1:C:83:ASP:HB3	2.00	0.43
1:E:283:CYS:HB3	1:E:332:SER:OG	2.18	0.43
2:F:20:PHE:CD1	3:K:214:ALA:HB1	2.52	0.43
1:C:253:CYS:SG	1:C:416:VAL:HB	2.59	0.43
1:A:110:ARG:HB3	1:A:115:ILE:HD11	2.00	0.43
2:B:338:PRO:HG2	2:B:344:HIS:CD2	2.53	0.43
2:B:464:LEU:O	2:B:467:ILE:HB	2.19	0.43
1:E:258:PHE:HB2	2:F:381:ARG:HH22	1.82	0.43
3:K:118:LYS:HB3	3:K:119:PRO:HD3	2.01	0.43
2:B:234:SER:O	2:B:238:THR:HG23	2.18	0.43
2:B:264:GLU:HA	2:B:329:ILE:HD11	1.99	0.43
1:E:95:GLU:OE1	1:E:135:ARG:NH2	2.46	0.43
1:A:484:ARG:O	1:A:487:GLU:HG3	2.17	0.43
2:B:113:PHE:CD2	2:B:241:PHE:HE1	2.35	0.43
2:B:309:TYR:HD1	2:B:349:LEU:HD12	1.84	0.43
2:D:269:GLN:O	3:I:229:ARG:HA	2.19	0.43
4:H:90:LYS:O	4:H:94:VAL:HG22	2.17	0.43
1:A:260:CYS:HA	1:A:446:ALA:CB	2.49	0.43
1:A:358:SER:O	1:A:362:GLU:HG3	2.19	0.43
1:A:450:HIS:O	1:A:450:HIS:ND1	2.52	0.43
2:B:109:LEU:HD23	2:B:109:LEU:HA	1.90	0.43
2:B:313:SER:HA	2:B:353:ILE:HG21	2.01	0.43
2:D:253:ILE:HD11	2:D:287:ALA:C	2.44	0.43
1:E:264:VAL:HG11	10:E:701:ADP:C5	2.54	0.43
2:F:160:THR:HG22	2:F:161:MET:HG3	2.00	0.43
1:A:392:TYR:CE1	1:A:431:THR:HG23	2.53	0.43
2:F:28:TYR:CD1	3:K:197:ILE:HG12	2.54	0.43
3:I:149:ILE:HA	3:I:152:MET:SD	2.59	0.43
2:B:102:ILE:HG23	2:B:104:VAL:HG23	2.01	0.43
2:B:177:GLY:H	2:B:362:ARG:HH22	1.67	0.43
2:B:178:LEU:HD12	2:B:360:VAL:HG12	2.01	0.43
1:E:176:PRO:HG2	1:E:215:TRP:CZ3	2.54	0.43
3:G:107:LEU:HD12	3:G:207:LEU:HD22	2.01	0.43
1:A:197:ILE:HG13	1:A:211:LEU:HG	2.00	0.42
2:B:402:GLN:HE22	2:B:475:ARG:H	1.66	0.42
2:B:405:ALA:HB2	2:B:475:ARG:NH1	2.34	0.42
1:A:271:LYS:HE2	1:A:300:LEU:HD11	2.01	0.42

Continued on next page...

Continued from previous page...

Atom-1	Atom-2	Interatomic distance (Å)	Clash overlap (Å)
2:B:338:PRO:HG2	2:B:344:HIS:NE2	2.34	0.42
1:C:35:VAL:O	1:C:70:ILE:N	2.46	0.42
2:F:278:LEU:HD12	2:F:333:PRO:HB3	2.01	0.42
3:G:215:LEU:HD23	3:G:215:LEU:HA	1.88	0.42
4:H:72:ALA:O	4:H:76:VAL:HG23	2.19	0.42
2:B:30:THR:OG1	2:B:42:GLU:O	2.32	0.42
2:B:214:ALA:HB1	2:B:217:VAL:HG22	2.02	0.42
1:C:112:LEU:HD13	2:D:141:PRO:HD2	2.01	0.42
2:D:252:ARG:HD2	2:D:287:ALA:HB2	2.00	0.42
2:D:369:ILE:HG22	2:D:445:THR:HG23	2.01	0.42
1:E:323:ASN:OD1	2:F:138:PRO:HB3	2.19	0.42
2:F:473:LEU:HD12	2:F:481:LEU:HD11	2.01	0.42
3:G:107:LEU:HD11	4:H:102:VAL:HG11	2.00	0.42
2:B:249:THR:HA	2:B:252:ARG:HD3	2.01	0.42
2:B:275:LEU:HD23	2:B:330:THR:HG23	2.02	0.42
1:E:193:LEU:HD23	1:E:211:LEU:HB2	2.02	0.42
3:K:136:LYS:HB2	3:K:193:ALA:HB2	2.01	0.42
2:B:36:GLY:O	2:B:83:THR:OG1	2.30	0.42
1:C:45:MET:HE1	1:C:61:ILE:O	2.19	0.42
1:C:96:LEU:HD13	1:C:342:TYR:HB2	2.02	0.42
1:E:240:LEU:HD22	1:E:439:TRP:CD2	2.55	0.42
1:E:365:ARG:HA	1:E:381:PRO:HD3	2.00	0.42
2:F:45:LYS:HE2	3:K:197:ILE:HD13	2.01	0.42
1:A:226:LYS:HA	1:A:398:ALA:HA	2.00	0.42
1:A:247:VAL:HG22	1:A:463:TYR:CD2	2.55	0.42
2:B:260:LEU:HD11	2:B:315:ILE:HG23	2.02	0.42
1:C:193:LEU:HA	1:C:211:LEU:HD13	2.02	0.42
1:C:254:ILE:O	1:C:416:VAL:N	2.46	0.42
1:A:266:SER:HB3	1:A:353:ILE:HG21	2.01	0.42
2:D:302:ARG:HH21	5:M:12:ARG:CZ	2.33	0.42
2:F:81:GLU:HA	2:F:248:PRO:HG3	2.02	0.42
2:F:257:ARG:O	2:F:261:THR:HG22	2.20	0.42
1:A:115:ILE:HG12	1:A:128:ILE:HG21	2.02	0.42
1:A:270:SER:HB3	1:A:353:ILE:HD12	2.00	0.42
1:A:499:VAL:HG21	1:A:507:LEU:HD11	2.00	0.42
2:B:127:PHE:CE1	3:G:96:LEU:HD22	2.55	0.42
1:E:40:MET:HG2	1:E:87:ARG:NH2	2.35	0.42
1:A:278:ILE:HG12	1:A:314:ARG:HH11	1.84	0.42
2:D:164:ILE:HG12	2:D:170:ILE:HG21	2.02	0.42
1:E:25:GLY:N	1:E:85:VAL:O	2.48	0.42
1:E:113:LYS:HG3	2:F:142:TYR:CZ	2.55	0.42

Continued on next page...

Continued from previous page...

Atom-1	Atom-2	Interatomic distance (Å)	Clash overlap (Å)
3:K:107:LEU:HD12	3:K:207:LEU:HD22	2.00	0.42
3:K:215:LEU:HD12	3:K:215:LEU:HA	1.87	0.42
1:A:61:ILE:HD13	1:A:371:LEU:HD11	2.02	0.42
1:A:101:MET:HE2	1:A:314:ARG:C	2.45	0.42
2:B:152:SER:N	2:B:192:GLY:O	2.42	0.42
1:C:254:ILE:HG22	1:C:256:GLY:N	2.35	0.42
1:E:101:MET:HE2	1:E:314:ARG:HA	2.01	0.42
2:D:250:ILE:HD12	2:D:250:ILE:H	1.83	0.41
1:A:238:ARG:N	1:A:528:GLN:OE1	2.47	0.41
2:B:101:ARG:HH11	2:B:131:TYR:HB3	1.84	0.41
1:C:322:SER:HB2	2:D:317:GLU:HG3	2.01	0.41
1:C:471:TYR:CD2	1:C:479:PRO:HG3	2.55	0.41
2:D:119:PRO:HG3	2:D:125:LYS:HA	2.02	0.41
2:F:215:MET:HE1	2:F:278:LEU:HB3	2.01	0.41
2:D:164:ILE:HA	2:D:168:GLN:NE2	2.34	0.41
2:D:481:LEU:HD23	2:D:481:LEU:HA	1.87	0.41
2:F:41:LEU:HD21	2:F:93:VAL:HB	2.03	0.41
2:B:256:PRO:HB2	2:B:315:ILE:HD12	2.02	0.41
1:C:239:VAL:HG22	1:C:526:LEU:HG	2.01	0.41
1:C:390:SER:O	1:C:394:ARG:HG2	2.20	0.41
2:D:338:PRO:HG2	2:D:344:HIS:CE1	2.55	0.41
3:G:141:ALA:HB2	3:G:188:VAL:HG12	2.02	0.41
1:A:48:LEU:HD11	1:A:57:VAL:CG1	2.50	0.41
1:C:312:MET:O	1:C:312:MET:HG3	2.19	0.41
1:A:259:GLY:HA2	8:A:701:ATP:H5'2	2.03	0.41
1:A:279:ILE:HG21	1:A:336:GLY:O	2.21	0.41
1:C:105:TYR:OH	1:C:132:ALA:O	2.29	0.41
1:C:374:MET:HE1	5:M:201:TYR:HB2	2.03	0.41
2:D:111:ARG:HB2	2:D:113:PHE:CE1	2.56	0.41
2:B:268:TYR:O	2:B:325:ARG:HD3	2.21	0.41
2:B:322:VAL:HG23	2:B:325:ARG:HB2	2.02	0.41
2:B:387:ILE:HD13	2:B:387:ILE:HA	1.84	0.41
2:B:402:GLN:OE1	2:B:406:LYS:HE2	2.20	0.41
2:D:376:LEU:HA	2:D:404:TYR:HE2	1.86	0.41
3:G:152:MET:HE2	3:G:156:ILE:HD11	2.03	0.41
3:K:153:LYS:HE3	3:K:153:LYS:HB2	1.66	0.41
1:A:37:ALA:HB3	1:A:40:MET:HE2	2.02	0.41
2:B:161:MET:HE3	2:B:403:LEU:HB3	2.02	0.41
2:B:468:TYR:O	2:B:485:TYR:OH	2.38	0.41
2:D:83:THR:OG1	1:E:45:MET:HE2	2.20	0.41
1:E:471:TYR:HB3	1:E:479:PRO:HD3	2.03	0.41

Continued on next page...

Continued from previous page...

Atom-1	Atom-2	Interatomic distance (Å)	Clash overlap (Å)
1:A:32:GLY:HA3	1:A:370:ARG:NH1	2.36	0.41
1:A:258:PHE:HB2	2:B:381:ARG:HH22	1.85	0.41
1:C:27:ILE:HD11	1:C:51:VAL:HG13	2.01	0.41
1:C:170:HIS:HE1	1:C:343:PHE:HE1	1.68	0.41
2:D:165:ALA:HB2	2:D:386:ALA:HB2	2.03	0.41
2:F:38:LEU:HD11	2:F:295:ARG:HG3	2.03	0.41
2:F:156:SER:H	2:F:446:GLN:HE22	1.69	0.41
2:F:173:PHE:N	2:F:358:ILE:O	2.54	0.41
3:G:126:VAL:HG11	3:G:163:LYS:HD2	2.02	0.41
3:I:153:LYS:HA	3:I:172:ILE:HD11	2.02	0.41
1:A:49:VAL:HG21	1:A:70:ILE:HD13	2.03	0.41
3:G:107:LEU:HD23	3:G:107:LEU:HA	1.95	0.41
3:I:107:LEU:HD23	3:I:107:LEU:HA	1.87	0.41
2:B:387:ILE:HD12	2:B:396:HIS:CG	2.55	0.40
1:C:48:LEU:O	1:C:88:THR:OG1	2.23	0.40
2:D:111:ARG:NH2	2:D:124:PRO:O	2.54	0.40
2:D:302:ARG:NH1	2:D:345:PRO:HD3	2.36	0.40
3:G:187:GLY:HA3	3:G:202:THR:HA	2.04	0.40
4:L:87:ALA:O	4:L:91:LYS:HG3	2.21	0.40
1:A:193:LEU:HB3	1:A:212:TYR:HD1	1.85	0.40
2:B:28:TYR:CE1	2:B:44:VAL:HA	2.56	0.40
1:C:334:TYR:HA	1:C:337:ILE:HG22	2.03	0.40
2:D:168:GLN:HB3	2:D:382:LEU:HD12	2.02	0.40
1:E:232:PRO:HG3	1:E:470:PHE:CE2	2.56	0.40
3:I:107:LEU:HD13	3:I:203:LEU:HB3	2.03	0.40
3:K:92:ARG:HG2	3:K:223:TYR:OH	2.21	0.40
1:A:72:VAL:HG21	1:A:76:THR:HG22	2.04	0.40
1:A:262:LYS:H	1:A:262:LYS:HG3	1.68	0.40
1:A:343:PHE:HB2	1:A:350:VAL:HG21	2.03	0.40
1:C:40:MET:HE1	1:C:49:VAL:HG11	2.03	0.40
1:C:175:PRO:HA	1:C:176:PRO:HD3	1.95	0.40
2:D:194:VAL:HG21	2:D:392:THR:HG22	2.04	0.40
4:L:99:ILE:O	4:L:103:ILE:HG12	2.22	0.40
1:A:47:GLU:OE1	1:A:89:GLY:HA2	2.21	0.40
1:C:27:ILE:HD12	1:C:83:ASP:HB2	2.03	0.40
1:C:172:ILE:HD11	1:C:211:LEU:HD23	2.04	0.40
2:D:155:VAL:HG13	2:D:371:PRO:HG2	2.02	0.40
2:D:174:SER:O	2:D:337:MET:N	2.45	0.40
2:D:209:SER:O	2:D:274:VAL:HA	2.21	0.40
4:L:99:ILE:HD13	4:L:99:ILE:HA	1.89	0.40
2:B:57:LEU:HA	2:B:91:THR:HG22	2.04	0.40

Continued on next page...

Continued from previous page...

Atom-1	Atom-2	Interatomic distance (Å)	Clash overlap (Å)
2:B:253:ILE:HA	2:B:284:TYR:HE1	1.87	0.40

There are no symmetry-related clashes.

5.3 Torsion angles [i](#)

5.3.1 Protein backbone [i](#)

In the following table, the Percentiles column shows the percent Ramachandran outliers of the chain as a percentile score with respect to all PDB entries followed by that with respect to all EM entries.

The Analysed column shows the number of residues for which the backbone conformation was analysed, and the total number of residues.

Mol	Chain	Analysed	Favoured	Allowed	Outliers	Percentiles	
1	A	590/639 (92%)	568 (96%)	22 (4%)	0	100	100
1	C	581/639 (91%)	564 (97%)	17 (3%)	0	100	100
1	E	588/639 (92%)	563 (96%)	24 (4%)	1 (0%)	44	71
2	B	460/517 (89%)	449 (98%)	11 (2%)	0	100	100
2	D	455/517 (88%)	434 (95%)	21 (5%)	0	100	100
2	F	455/517 (88%)	438 (96%)	17 (4%)	0	100	100
3	G	198/233 (85%)	196 (99%)	2 (1%)	0	100	100
3	I	215/233 (92%)	211 (98%)	4 (2%)	0	100	100
3	K	204/233 (88%)	202 (99%)	2 (1%)	0	100	100
4	H	80/114 (70%)	80 (100%)	0	0	100	100
4	J	106/114 (93%)	106 (100%)	0	0	100	100
4	L	86/114 (75%)	84 (98%)	2 (2%)	0	100	100
5	M	212/256 (83%)	205 (97%)	7 (3%)	0	100	100
6	N	109/118 (92%)	106 (97%)	3 (3%)	0	100	100
7	P	435/478 (91%)	430 (99%)	5 (1%)	0	100	100
All	All	4774/5361 (89%)	4636 (97%)	137 (3%)	1 (0%)	100	100

All (1) Ramachandran outliers are listed below:

Mol	Chain	Res	Type
1	E	108	ILE

5.3.2 Protein sidechains [i](#)

In the following table, the Percentiles column shows the percent sidechain outliers of the chain as a percentile score with respect to all PDB entries followed by that with respect to all EM entries.

The Analysed column shows the number of residues for which the sidechain conformation was analysed, and the total number of residues.

Mol	Chain	Analysed	Rotameric	Outliers	Percentiles	
1	A	399/537 (74%)	399 (100%)	0	100	100
1	C	231/537 (43%)	231 (100%)	0	100	100
1	E	341/537 (64%)	339 (99%)	2 (1%)	84	90
2	B	318/444 (72%)	317 (100%)	1 (0%)	91	94
2	D	295/444 (66%)	295 (100%)	0	100	100
2	F	307/444 (69%)	306 (100%)	1 (0%)	91	94
3	G	85/208 (41%)	85 (100%)	0	100	100
3	I	75/208 (36%)	75 (100%)	0	100	100
3	K	81/208 (39%)	81 (100%)	0	100	100
4	H	17/94 (18%)	17 (100%)	0	100	100
4	J	13/94 (14%)	13 (100%)	0	100	100
4	L	17/94 (18%)	17 (100%)	0	100	100
5	M	48/221 (22%)	48 (100%)	0	100	100
All	All	2227/4070 (55%)	2223 (100%)	4 (0%)	91	95

All (4) residues with a non-rotameric sidechain are listed below:

Mol	Chain	Res	Type
2	B	330	THR
1	E	87	ARG
1	E	88	THR
2	F	339	ASN

Sometimes sidechains can be flipped to improve hydrogen bonding and reduce clashes. All (22) such sidechains are listed below:

Mol	Chain	Res	Type
1	A	346	GLN
1	A	349	ASN
1	A	468	ASN
2	B	64	GLN
2	B	190	GLN
2	B	243	ASN
1	C	71	GLN
1	C	170	HIS
1	C	349	ASN
2	D	29	ASN
2	D	54	ASN
2	D	186	GLN
2	D	232	ASN
2	D	446	GLN
1	E	346	GLN
2	F	27	ASN
2	F	64	GLN
2	F	181	ASN
2	F	344	HIS
2	F	446	GLN
4	J	110	HIS
5	M	175	HIS

5.3.3 RNA [i](#)

There are no RNA molecules in this entry.

5.4 Non-standard residues in protein, DNA, RNA chains [i](#)

There are no non-standard protein/DNA/RNA residues in this entry.

5.5 Carbohydrates [i](#)

There are no oligosaccharides in this entry.

5.6 Ligand geometry [i](#)

Of 4 ligands modelled in this entry, 2 are monoatomic - leaving 2 for Mogul analysis.

In the following table, the Counts columns list the number of bonds (or angles) for which Mogul statistics could be retrieved, the number of bonds (or angles) that are observed in the model and

the number of bonds (or angles) that are defined in the Chemical Component Dictionary. The Link column lists molecule types, if any, to which the group is linked. The Z score for a bond length (or angle) is the number of standard deviations the observed value is removed from the expected value. A bond length (or angle) with $|Z| > 2$ is considered an outlier worth inspection. RMSZ is the root-mean-square of all Z scores of the bond lengths (or angles).

Mol	Type	Chain	Res	Link	Bond lengths			Bond angles		
					Counts	RMSZ	# Z > 2	Counts	RMSZ	# Z > 2
10	ADP	E	701	9	24,29,29	0.89	0	29,45,45	1.20	2 (6%)
8	ATP	A	701	9	28,33,33	0.66	0	34,52,52	0.59	1 (2%)

In the following table, the Chirals column lists the number of chiral outliers, the number of chiral centers analysed, the number of these observed in the model and the number defined in the Chemical Component Dictionary. Similar counts are reported in the Torsion and Rings columns. '-' means no outliers of that kind were identified.

Mol	Type	Chain	Res	Link	Chirals	Torsions	Rings
10	ADP	E	701	9	-	2/12/32/32	0/3/3/3
8	ATP	A	701	9	-	3/18/38/38	0/3/3/3

There are no bond length outliers.

All (3) bond angle outliers are listed below:

Mol	Chain	Res	Type	Atoms	Z	Observed(°)	Ideal(°)
10	E	701	ADP	N3-C2-N1	-3.59	123.80	128.67
10	E	701	ADP	C4-C5-N7	-2.54	106.65	109.34
8	A	701	ATP	C5-C6-N6	2.33	123.86	120.31

There are no chirality outliers.

All (5) torsion outliers are listed below:

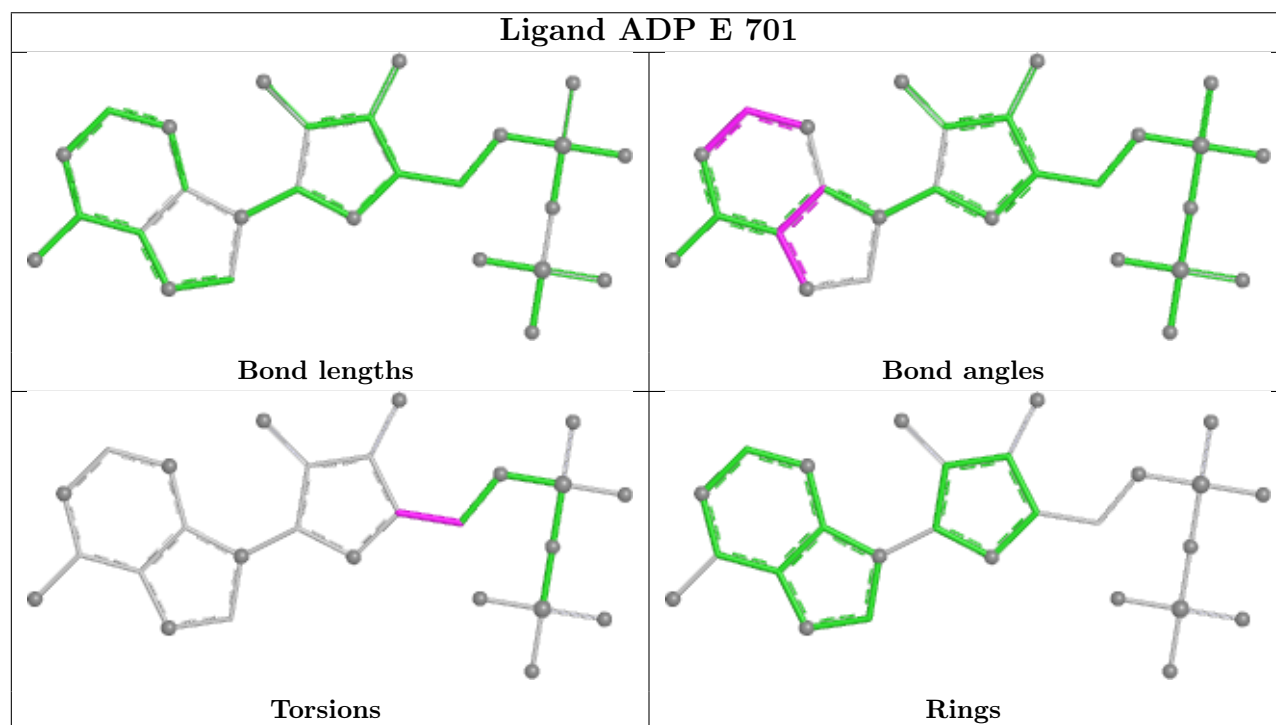
Mol	Chain	Res	Type	Atoms
10	E	701	ADP	O4'-C4'-C5'-O5'
10	E	701	ADP	C3'-C4'-C5'-O5'
8	A	701	ATP	O4'-C4'-C5'-O5'
8	A	701	ATP	PA-O3A-PB-O1B
8	A	701	ATP	PA-O3A-PB-O2B

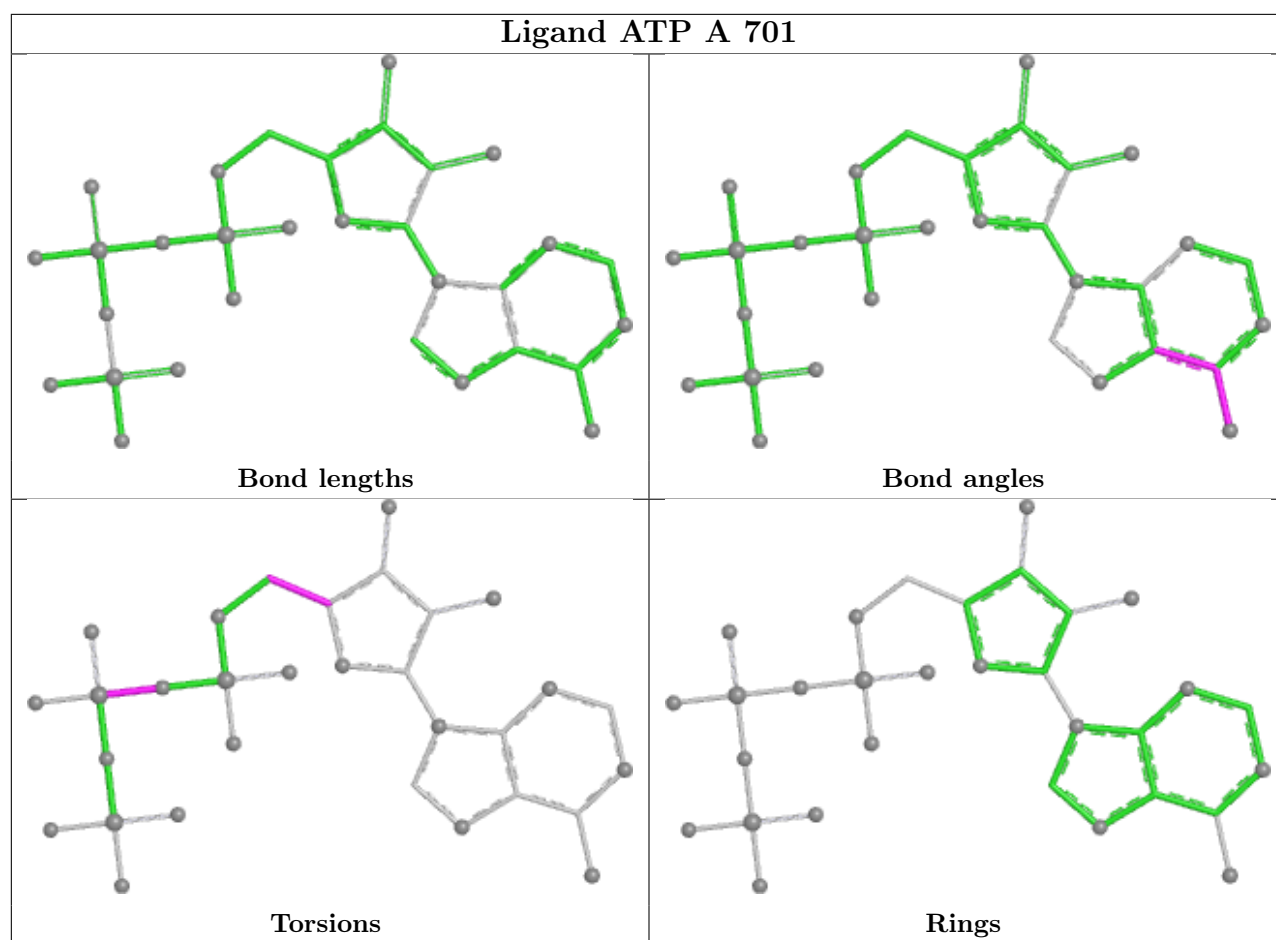
There are no ring outliers.

2 monomers are involved in 3 short contacts:

Mol	Chain	Res	Type	Clashes	Symm-Clashes
10	E	701	ADP	1	0
8	A	701	ATP	2	0

The following is a two-dimensional graphical depiction of Mogul quality analysis of bond lengths, bond angles, torsion angles, and ring geometry for all instances of the Ligand of Interest. In addition, ligands with molecular weight > 250 and outliers as shown on the validation Tables will also be included. For torsion angles, if less than 5% of the Mogul distribution of torsion angles is within 10 degrees of the torsion angle in question, then that torsion angle is considered an outlier. Any bond that is central to one or more torsion angles identified as an outlier by Mogul will be highlighted in the graph. For rings, the root-mean-square deviation (RMSD) between the ring in question and similar rings identified by Mogul is calculated over all ring torsion angles. If the average RMSD is greater than 60 degrees and the minimal RMSD between the ring in question and any Mogul-identified rings is also greater than 60 degrees, then that ring is considered an outlier. The outliers are highlighted in purple. The color gray indicates Mogul did not find sufficient equivalents in the CSD to analyse the geometry.





5.7 Other polymers [i](#)

There are no such residues in this entry.

5.8 Polymer linkage issues [i](#)

There are no chain breaks in this entry.

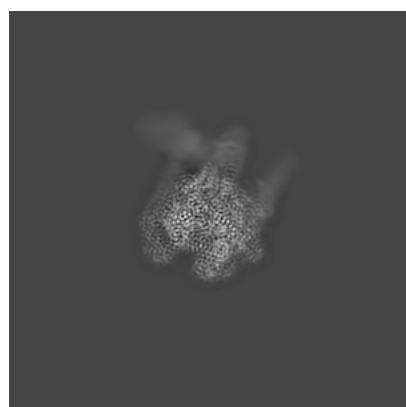
6 Map visualisation [i](#)

This section contains visualisations of the EMDB entry EMD-25997. These allow visual inspection of the internal detail of the map and identification of artifacts.

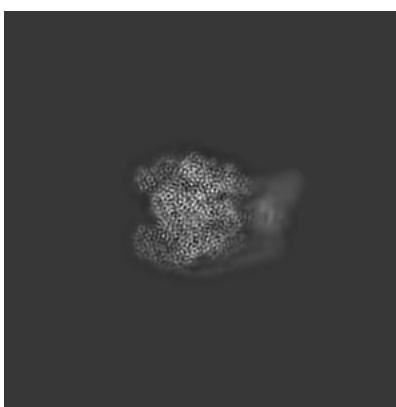
No raw map or half-maps were deposited for this entry and therefore no images, graphs, etc. pertaining to the raw map can be shown.

6.1 Orthogonal projections [i](#)

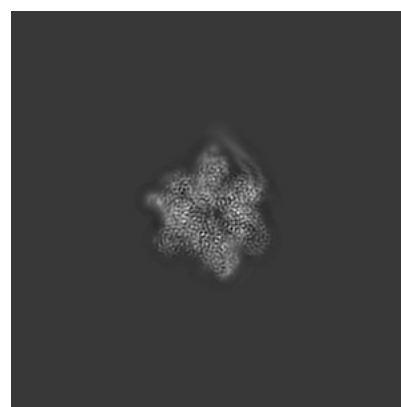
6.1.1 Primary map



X



Y



Z

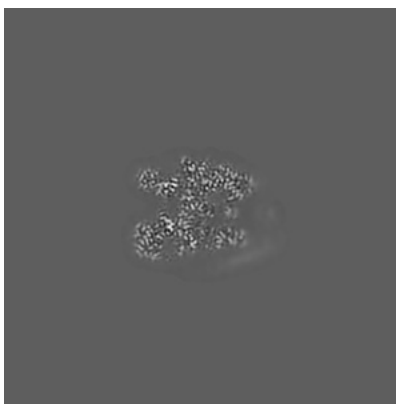
The images above show the map projected in three orthogonal directions.

6.2 Central slices [i](#)

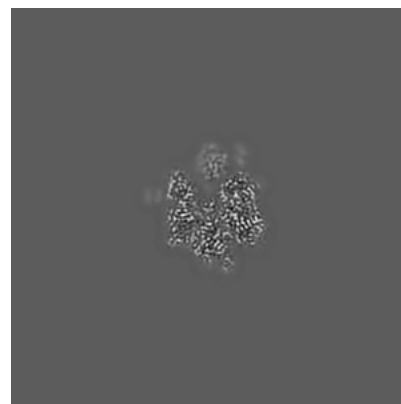
6.2.1 Primary map



X Index: 200



Y Index: 200

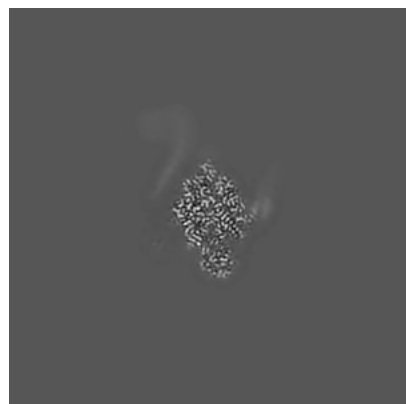


Z Index: 200

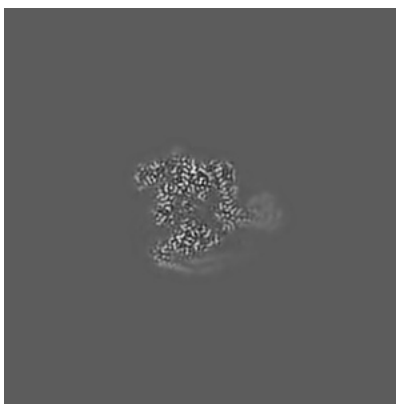
The images above show central slices of the map in three orthogonal directions.

6.3 Largest variance slices [i](#)

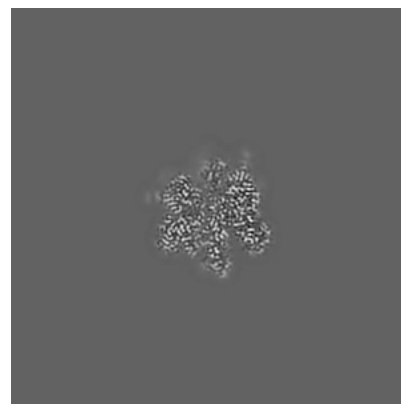
6.3.1 Primary map



X Index: 230



Y Index: 214

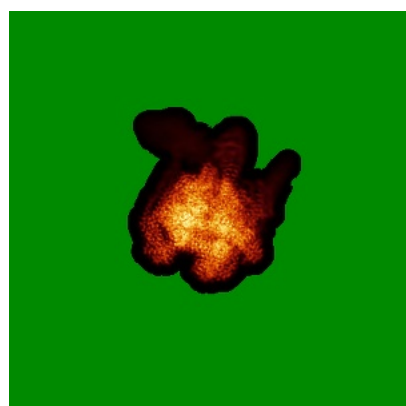


Z Index: 188

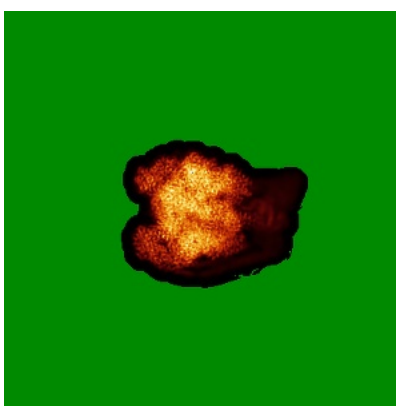
The images above show the largest variance slices of the map in three orthogonal directions.

6.4 Orthogonal standard-deviation projections (False-color) [i](#)

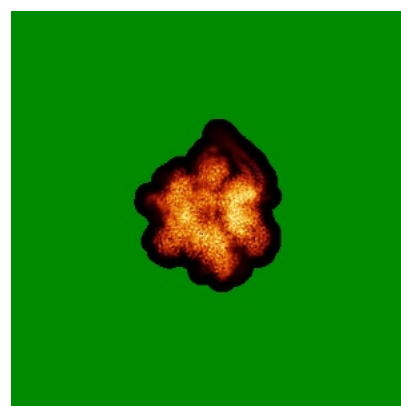
6.4.1 Primary map



X



Y

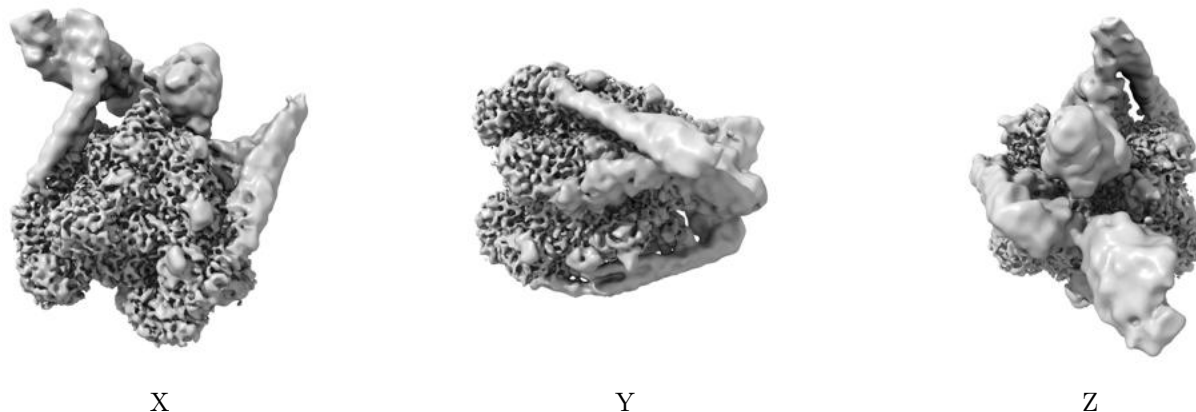


Z

The images above show the map standard deviation projections with false color in three orthogonal directions. Minimum values are shown in green, max in blue, and dark to light orange shades represent small to large values respectively.

6.5 Orthogonal surface views [i](#)

6.5.1 Primary map



The images above show the 3D surface view of the map at the recommended contour level 0.2. These images, in conjunction with the slice images, may facilitate assessment of whether an appropriate contour level has been provided.

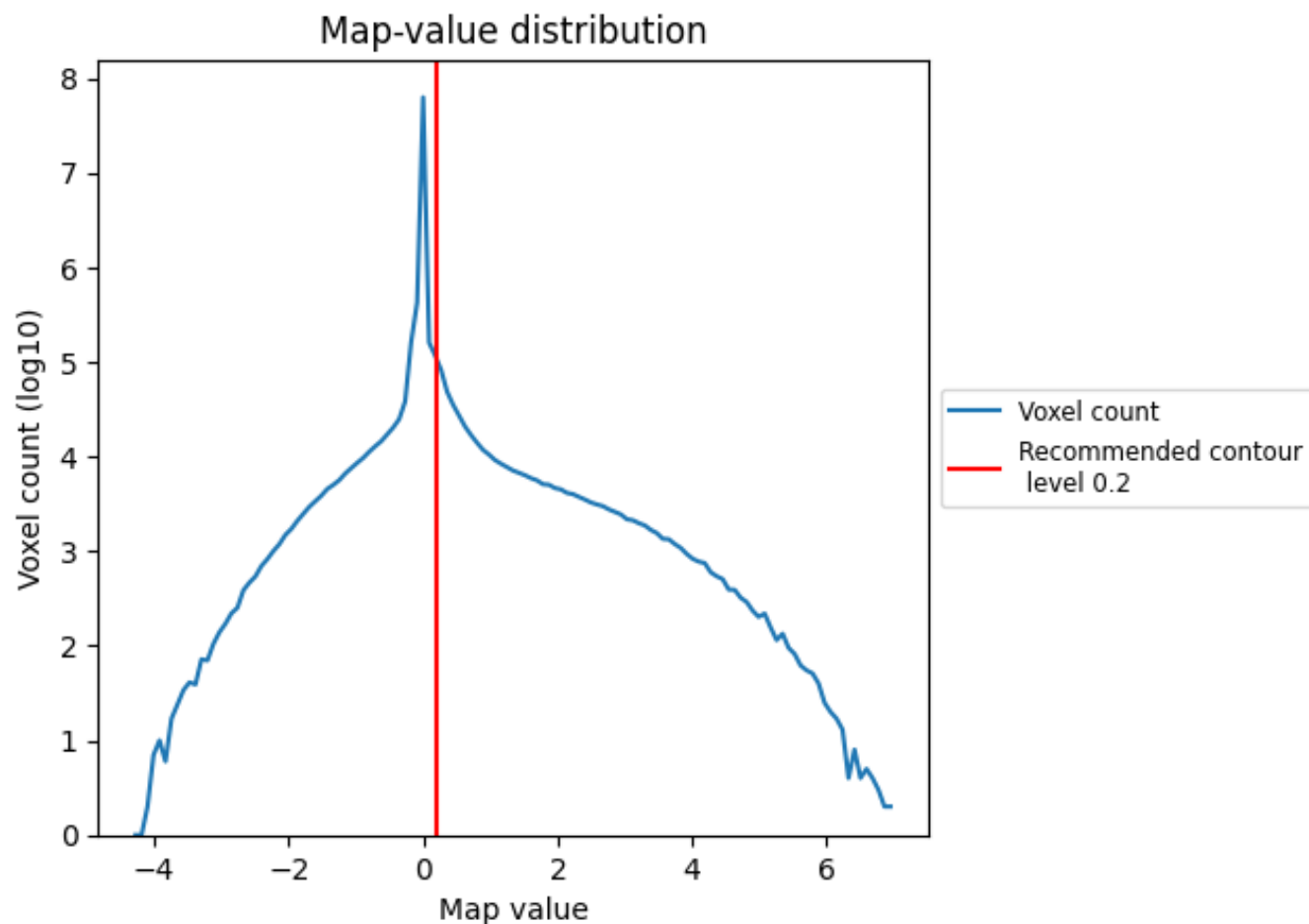
6.6 Mask visualisation [i](#)

This section was not generated. No masks/segmentation were deposited.

7 Map analysis [i](#)

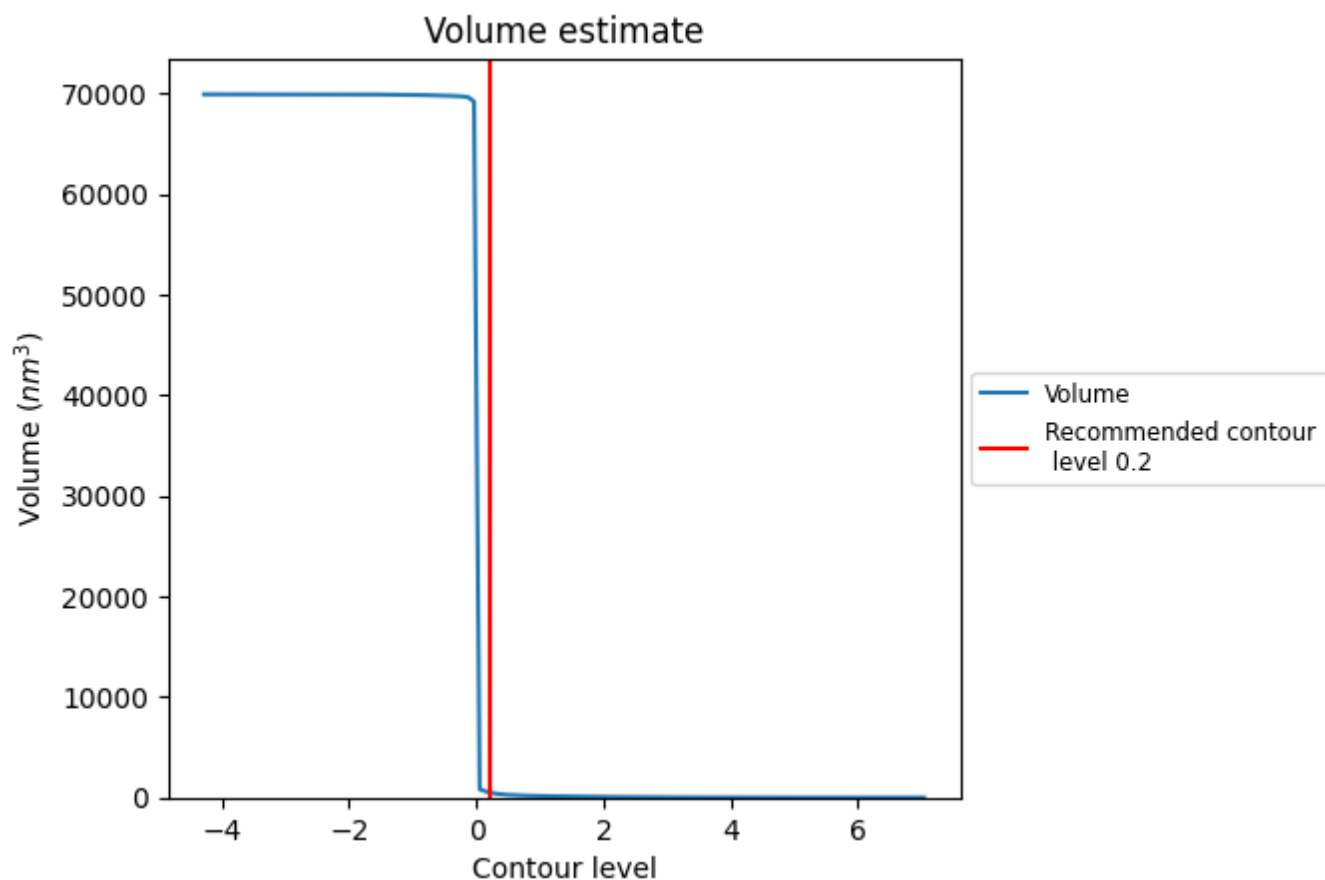
This section contains the results of statistical analysis of the map.

7.1 Map-value distribution [i](#)



The map-value distribution is plotted in 128 intervals along the x-axis. The y-axis is logarithmic. A spike in this graph at zero usually indicates that the volume has been masked.

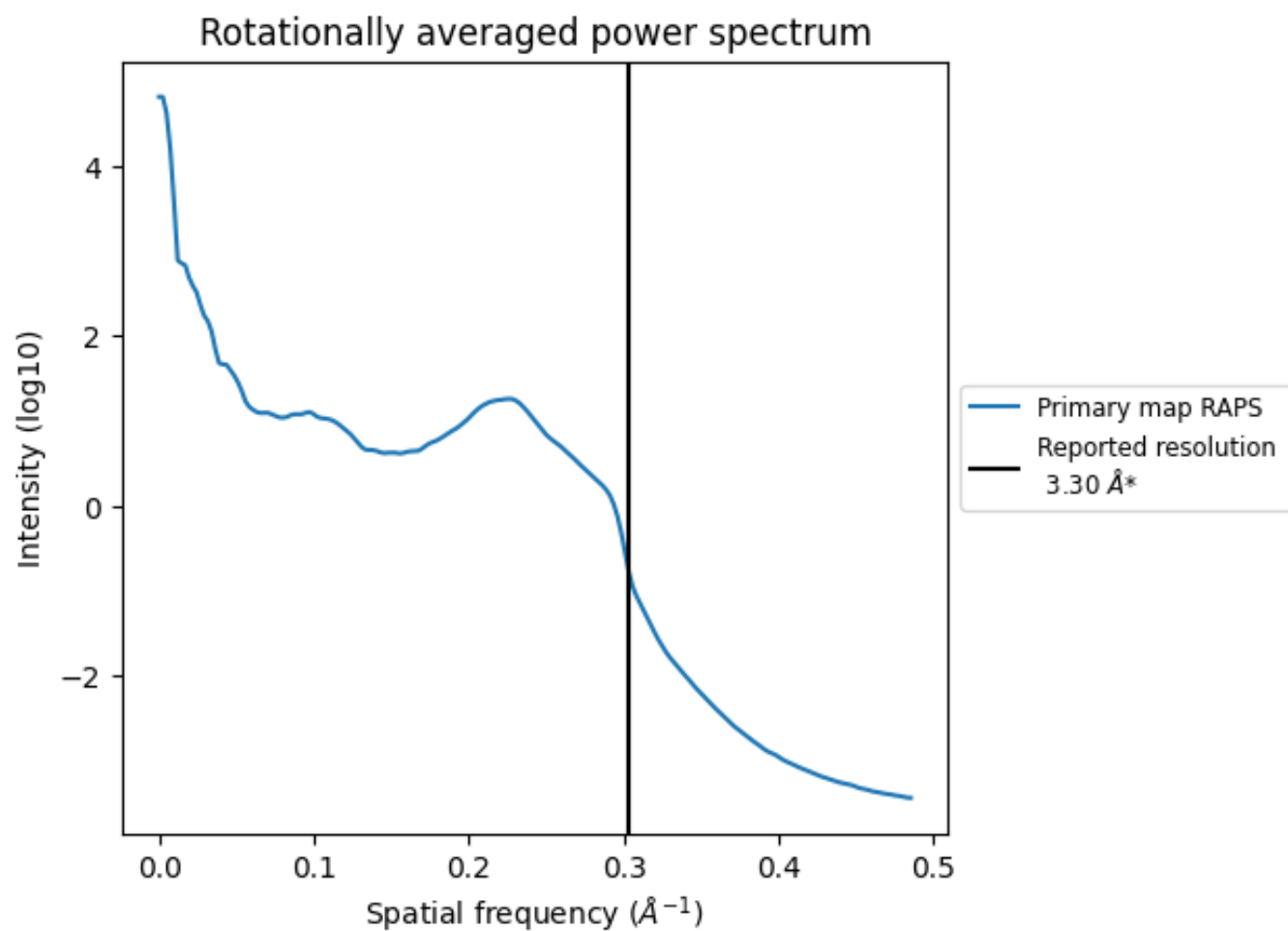
7.2 Volume estimate [i](#)



The volume at the recommended contour level is 531 nm³; this corresponds to an approximate mass of 480 kDa.

The volume estimate graph shows how the enclosed volume varies with the contour level. The recommended contour level is shown as a vertical line and the intersection between the line and the curve gives the volume of the enclosed surface at the given level.

7.3 Rotationally averaged power spectrum ⓘ



*Reported resolution corresponds to spatial frequency of 0.303 Å⁻¹

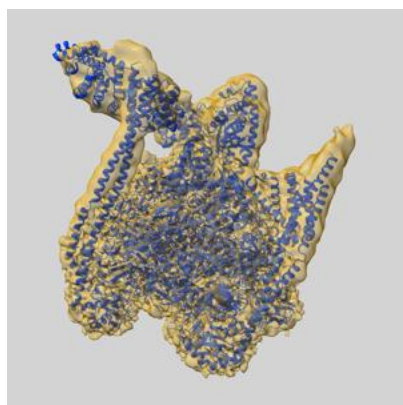
8 Fourier-Shell correlation

This section was not generated. No FSC curve or half-maps provided.

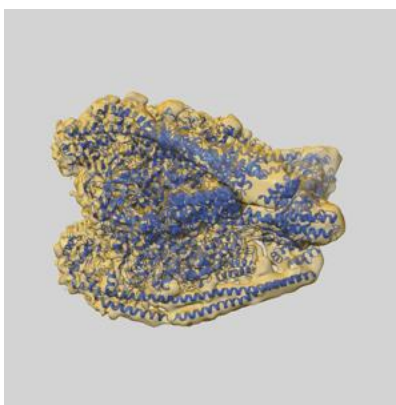
9 Map-model fit [i](#)

This section contains information regarding the fit between EMDB map EMD-25997 and PDB model 7TMO. Per-residue inclusion information can be found in [section 3](#) on [page 9](#).

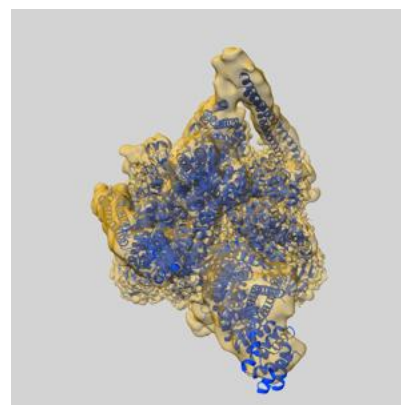
9.1 Map-model overlay [i](#)



X



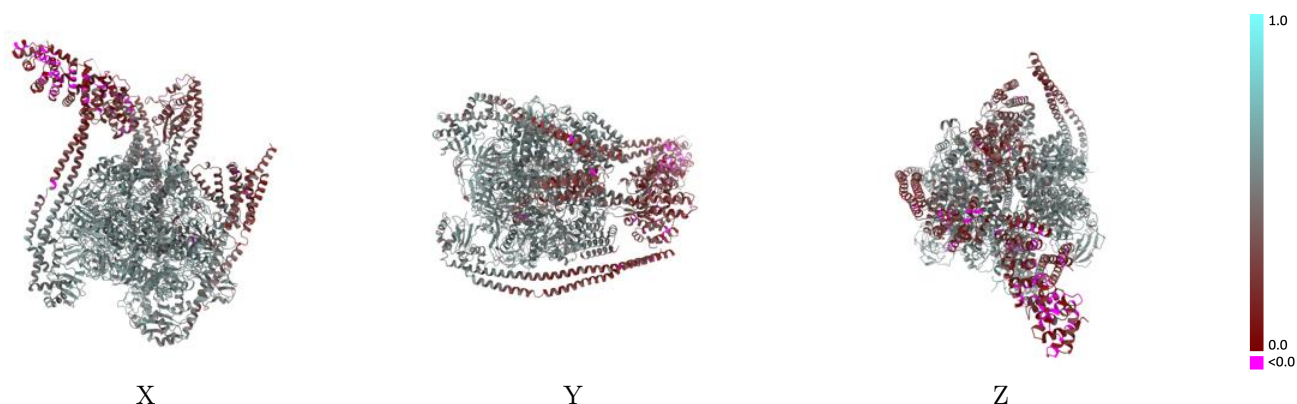
Y



Z

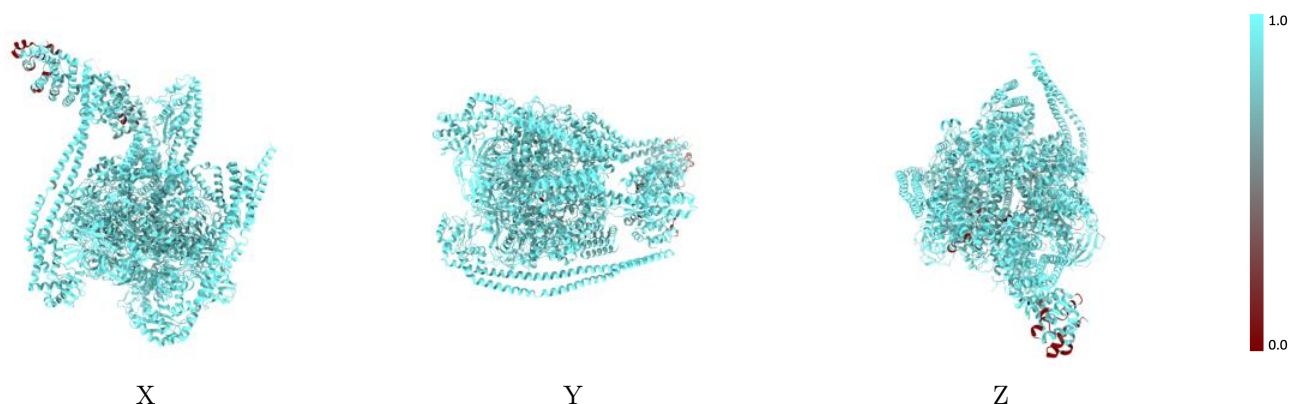
The images above show the 3D surface view of the map at the recommended contour level 0.2 at 50% transparency in yellow overlaid with a ribbon representation of the model coloured in blue. These images allow for the visual assessment of the quality of fit between the atomic model and the map.

9.2 Q-score mapped to coordinate model [i](#)



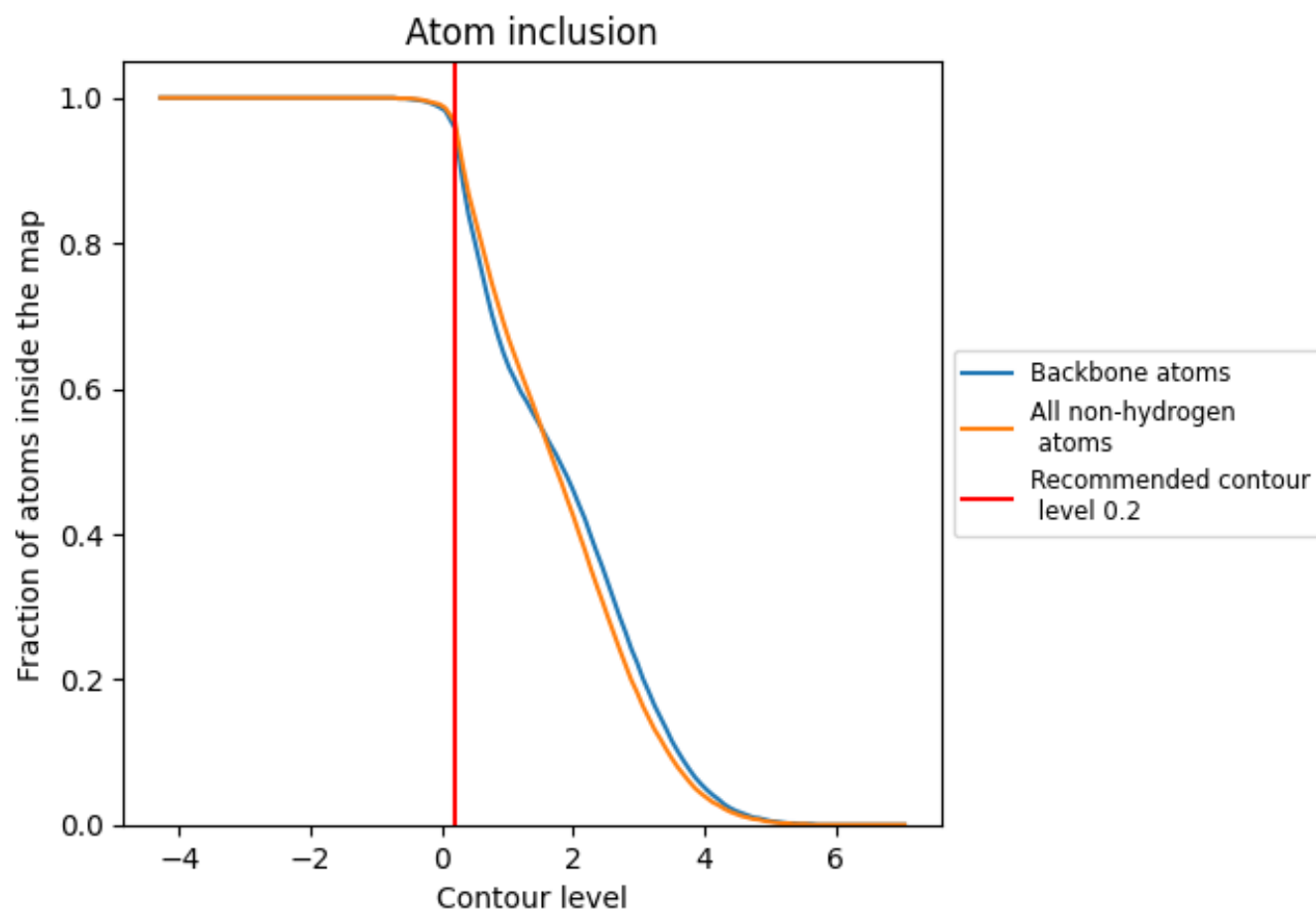
The images above show the model with each residue coloured according to its Q-score. This shows their resolvability in the map with higher Q-score values reflecting better resolvability. Please note: Q-score is calculating the resolvability of atoms, and thus high values are only expected at resolutions at which atoms can be resolved. Low Q-score values may therefore be expected for many entries.

9.3 Atom inclusion mapped to coordinate model [i](#)



The images above show the model with each residue coloured according to its atom inclusion. This shows to what extent they are inside the map at the recommended contour level (0.2).





















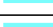

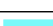

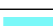







9.4 Atom inclusion [i](#)



At the recommended contour level, 96% of all backbone atoms, 97% of all non-hydrogen atoms, are inside the map.

9.5 Map-model fit summary

The table lists the average atom inclusion at the recommended contour level (0.2) and Q-score for the entire model and for each chain.

Chain	Atom inclusion	Q-score
All	 0.9670	 0.4760
A	 0.9740	 0.5420
B	 0.9700	 0.5470
C	 0.9770	 0.4710
D	 0.9660	 0.5330
E	 0.9770	 0.5330
F	 0.9700	 0.5480
G	 0.9840	 0.4790
H	 0.9800	 0.3790
I	 0.9840	 0.4410
J	 0.9900	 0.3350
K	 0.9880	 0.4700
L	 0.9790	 0.3710
M	 0.9740	 0.4040
N	 0.9960	 0.2770
P	 0.8500	 0.1330

